

Texas Instruments

DESIGNER:
Brian Ashelin
(507) 536-2901

TITLE:

CC2500EM 062



ENGINEER:
Rea Schmid
(507) 536-2911

PART NO.:

CC2500EM 062

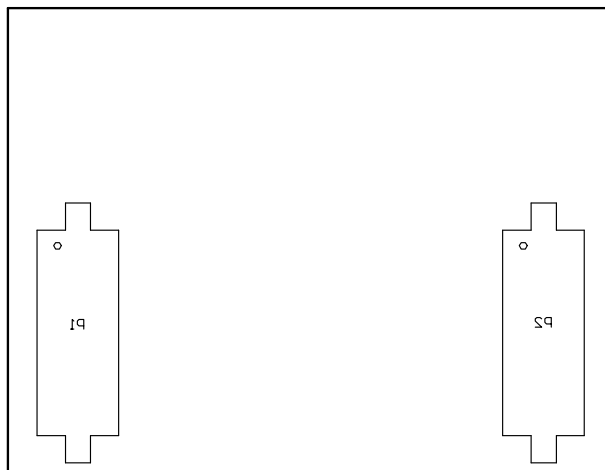
REV: A

DATE: 26-Mar-2008

FILE NAME: CC2500EM 062.PCB

LAYER: Mechanical1

GERBER:



Texas Instruments

DESIGNER:
Brian Ashelin
(507) 536-2901

TITLE:

CC2500EM 062



ENGINEER:
Rea Schmid
(507) 536-2911

PART NO.:

CC2500EM 062

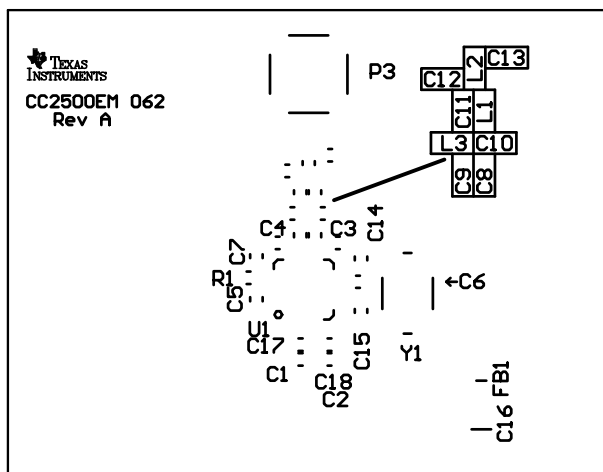
REV: A

DATE: 26-Mar-2008

FILE NAME: CC2500EM 062.PCB

LAYER: Mechanical5

GERBER:



Texas Instruments

DESIGNER:
Brian Ashelin
(507) 536-2901

TITLE:

CC2500EM 062



ENGINEER:
Rea Schmid
(507) 536-2911

PART NO.: CC2500EM 062

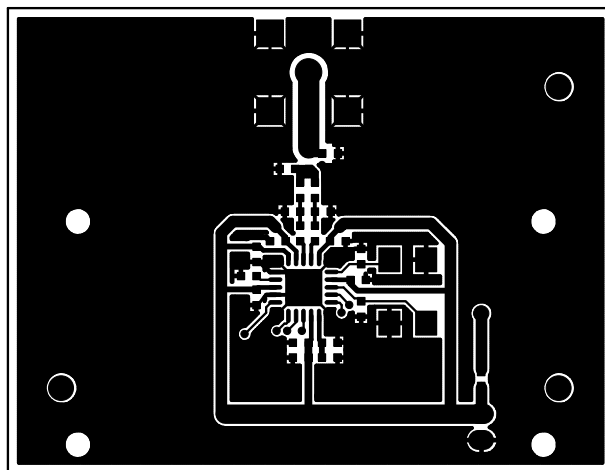
REV: A

DATE: 26-Mar-2008

FILE NAME: CC2500EM 062.PCB

LAYER: Top Overlay

GERBER: .GTO



Texas Instruments

DESIGNER:
Brian Ashelin
(507) 536-2901

TITLE:

CC2500EM 062



ENGINEER:
Rea Schmid
(507) 536-2911

PART NO.:

CC2500EM 062

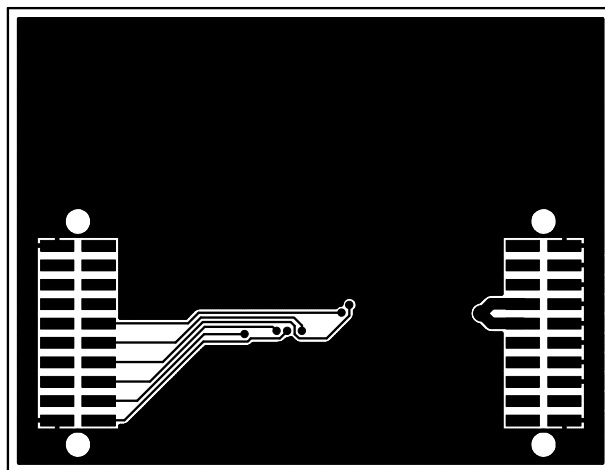
REV: A

DATE: 26-Mar-2008

FILE NAME: CC2500EM 062.PCB

LAYER: TopLayer

GERBER: .GTL



Texas Instruments

DESIGNER:
Brian Ashelin
(507) 536-2901

TITLE:

CC2500EM 062



ENGINEER:
Rea Schmid
(507) 536-2911

PART NO.:

CC2500EM 062

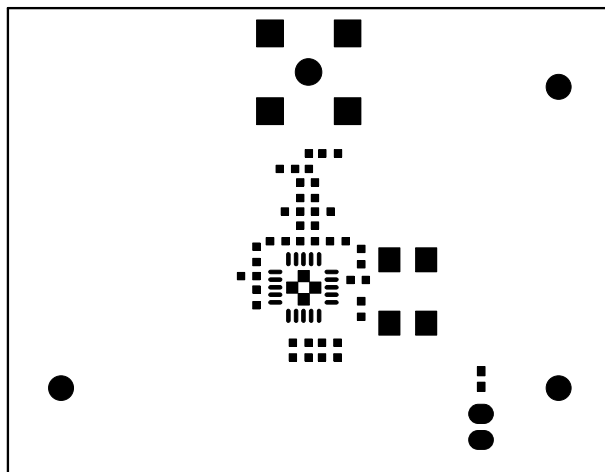
REV: A

DATE: 26-Mar-2008

FILE NAME: CC2500EM 062.PCB

LAYER: BottomLayer

GERBER: .GBL



Texas Instruments

DESIGNER:
Brian Ashelin
(507) 536-2901

TITLE:

CC2500EM 062



ENGINEER:
Rea Schmid
(507) 536-2911

PART NO.:

CC2500EM 062

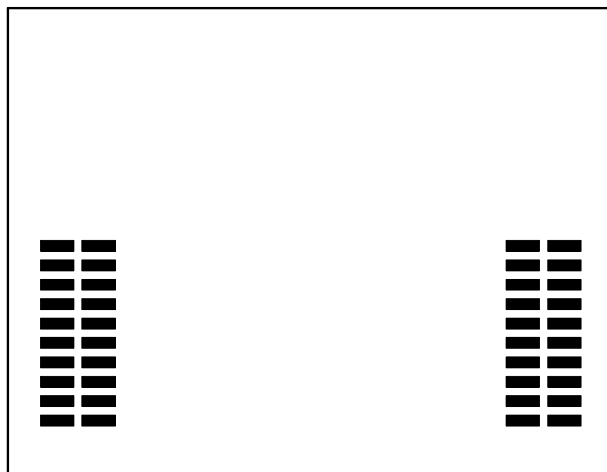
REV: A

DATE: 26-Mar-2008

FILE NAME: CC2500EM 062.PCB

LAYER: Top Paste

GERBER: .GTP



Texas Instruments

DESIGNER:
Brian Ashelin
(507) 536-2901

TITLE:

CC2500EM 062



ENGINEER:
Rea Schmid
(507) 536-2911

PART NO.:

CC2500EM 062

REV:

A

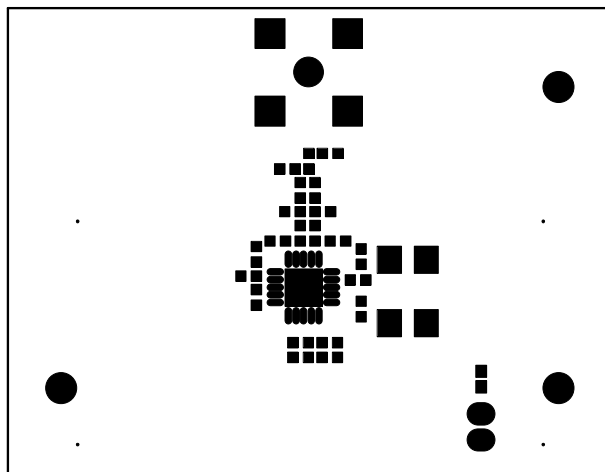
DATE:

26-Mar-2008

FILE NAME: CC2500EM 062.PCB

LAYER: Bottom Paste

GERBER: .GBP



Texas Instruments

DESIGNER:
Brian Ashelin
(507) 536-2901

TITLE:

CC2500EM 062



ENGINEER:
Rea Schmid
(507) 536-2911

PART NO.:

CC2500EM 062

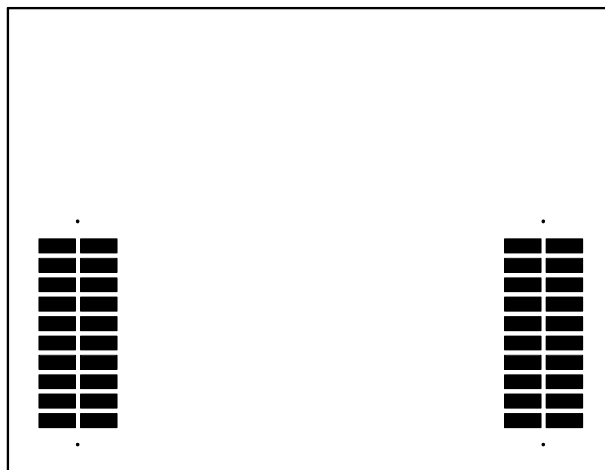
REV: A

DATE: 26-Mar-2008

FILE NAME: CC2500EM 062.PCB

LAYER: Top Solder Mask

GERBER: .GTS



Texas Instruments

DESIGNER:
Brian Ashelin
(507) 536-2901

TITLE:

CC2500EM 062



ENGINEER:
Rea Schmid
(507) 536-2911

PART NO.:

CC2500EM 062

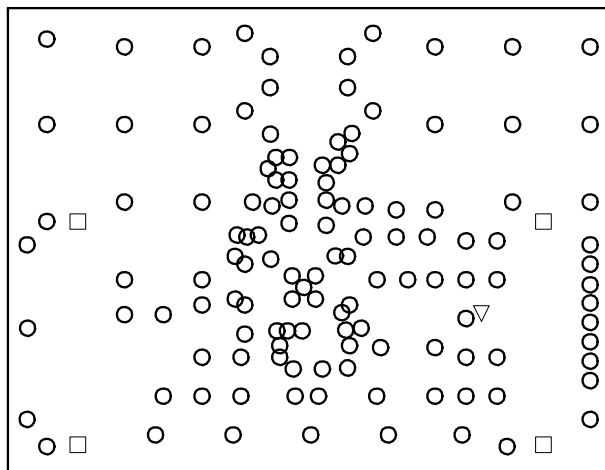
REV: A

DATE: 26-Mar-2008

FILE NAME: CC2500EM 062.PCB

LAYER: Bottom Solder Mask

GERBER: .GBS



○	126	10mil	0.254mm	PTH
▽	1	20mil	0.508mm	PTH
□	4	52mil	1.3208mm	PTH
	131	Total		

Drill Drawing.

Texas Instruments

DESIGNER:
Brian Ashelin
(507) 536-2901

TITLE:

CC2500EM 062



ENGINEER:
Rea Schmid
(507) 536-2911

PART NO.:

CC2500EM 062

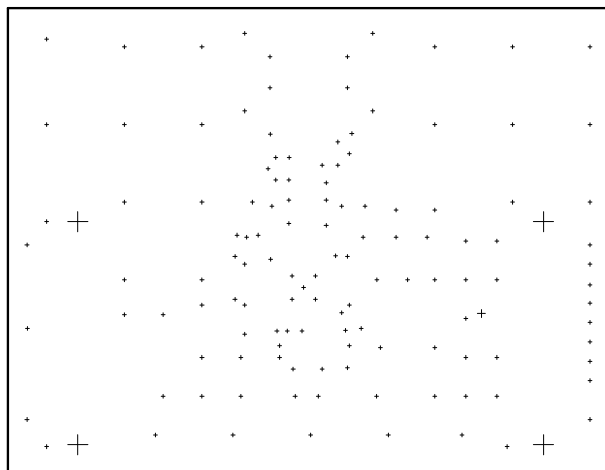
REV: A

DATE: 26-Mar-2008

FILE NAME: CC2500EM 062.PCB

LAYER: DrillDrawing

GERBER:



Texas Instruments

DESIGNER:
Brian Ashelin
(507) 536-2901

TITLE:

CC2500EM 062



ENGINEER:
Rea Schmid
(507) 536-2911

PART NO.:

CC2500EM 062

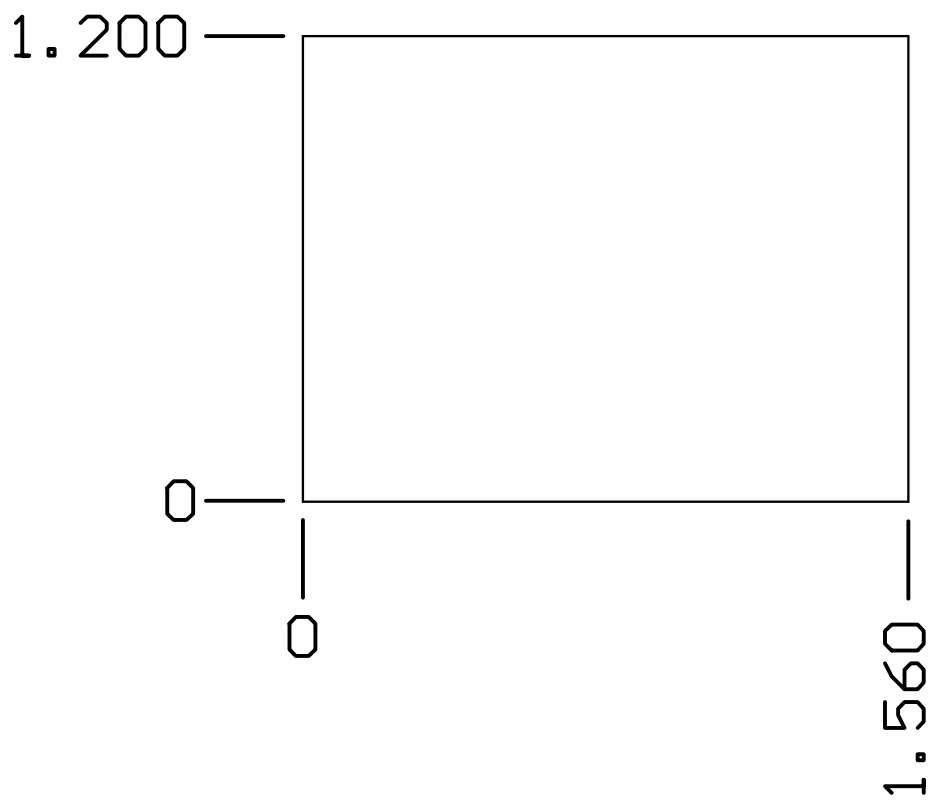
REV: A

DATE: 26-Mar-2008

FILE NAME: CC2500EM 062.PCB

LAYER: DrillGuide

GERBER:



Texas Instruments

DESIGNER:
Brian Ashelin
(507) 536-2901

TITLE:

CC2500EM 062



ENGINEER:
Rea Schmid
(507) 536-2911

PART NO.:

CC2500EM 062

REV: A

DATE: 26-Mar-2008

FILE NAME: CC2500EM 062.PCB

LAYER: Mechanical3

GERBER: