

TPS25741 Power Multiplexing Introduction and Design Considerations

Patrick Zeng, Eric Wright

South China FAE, LP/PI

ABSTRACT

The TPS25741 is a USB Type-C™ *Power Delivery* (PD) *Downstream Facing Port* (DFP) controller that supports multiplexing two existing input voltage rails onto VBUS. The TPS25741 adopts a special control scheme to ensure smooth voltage transitions per [USB Power Delivery Specification](#) while preventing reverse current between the two input rails. This application note describes the TPS25741 multiplexer control scheme and also presents a solution to avoid common issues when using P-FETs for multiplexing.

Contents

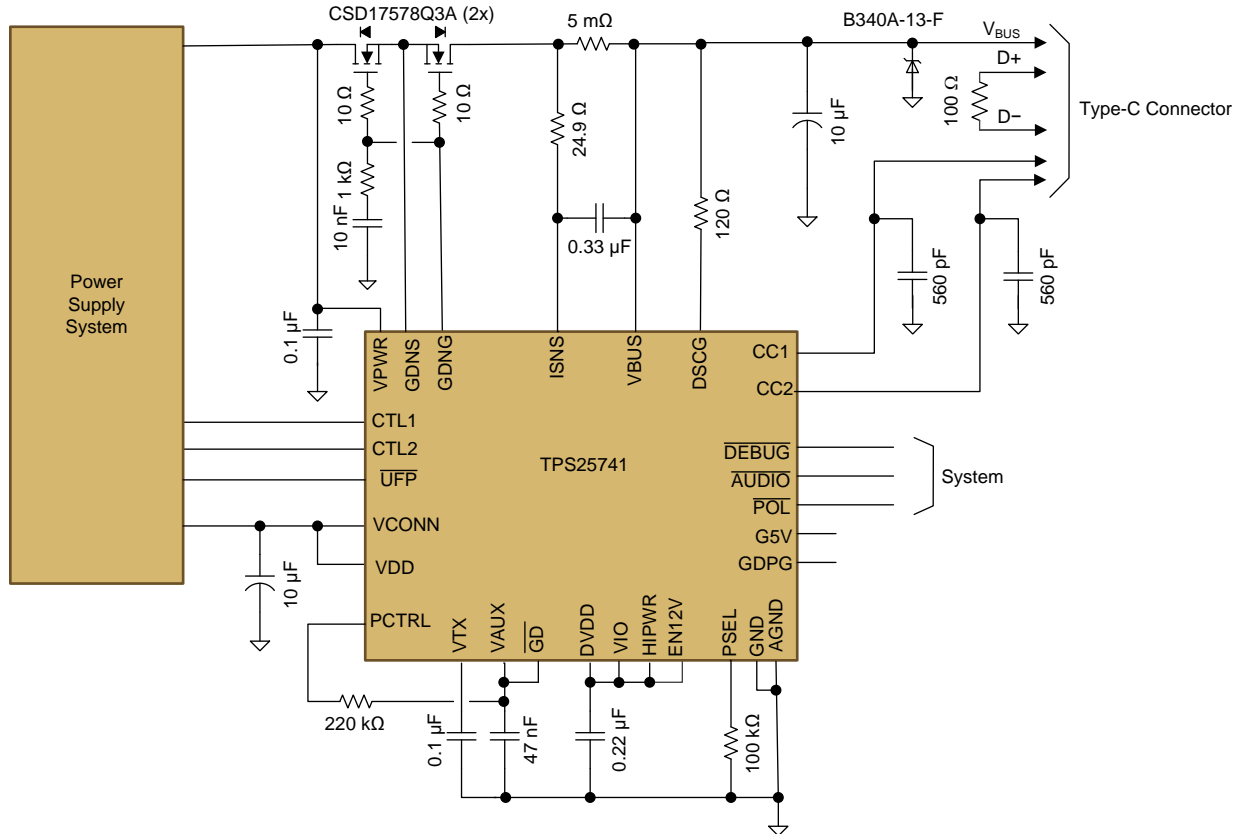
1	Introduction of Power Multiplexing.....	2
2	Power Multiplexing Design Consideration	4
3	Testing	9
4	Conclusion	10
5	References	10

List of Figures

1	Adapter-Like Application Architecture.....	2
2	Desktop-Like Application Architecture: Power Multiplexing	3
3	PD Specification on Positive Voltage Transition.....	4
4	PD Specification on Negative Voltage Transition	5
5	Implementing Power Multiplexing	5
6	Bulk Capacitor on the VBUS	6
7	Large In-Rush Current Causes OCP.....	6
8	Slew Rate Circuits Cause Delay of Protection.....	7
9	Solution to Achieve Slow Turn-On and Fast Turn-Off	7
10	Mux Between 5 V and 12 V at No Load	9
11	Mux Between 5 V and 12 V at 3 A	9
12	Mux Between 5 V and 20 V at No Load	9
13	Mux Between 5 V and 20 V at 3 A	9
14	5- to 12-V Transition.....	9
15	5- to 20-V Transition.....	9
16	Hot Short on Output 12 V	9
17	Hot Short on Output 20 V	9

1 Introduction of Power Multiplexing

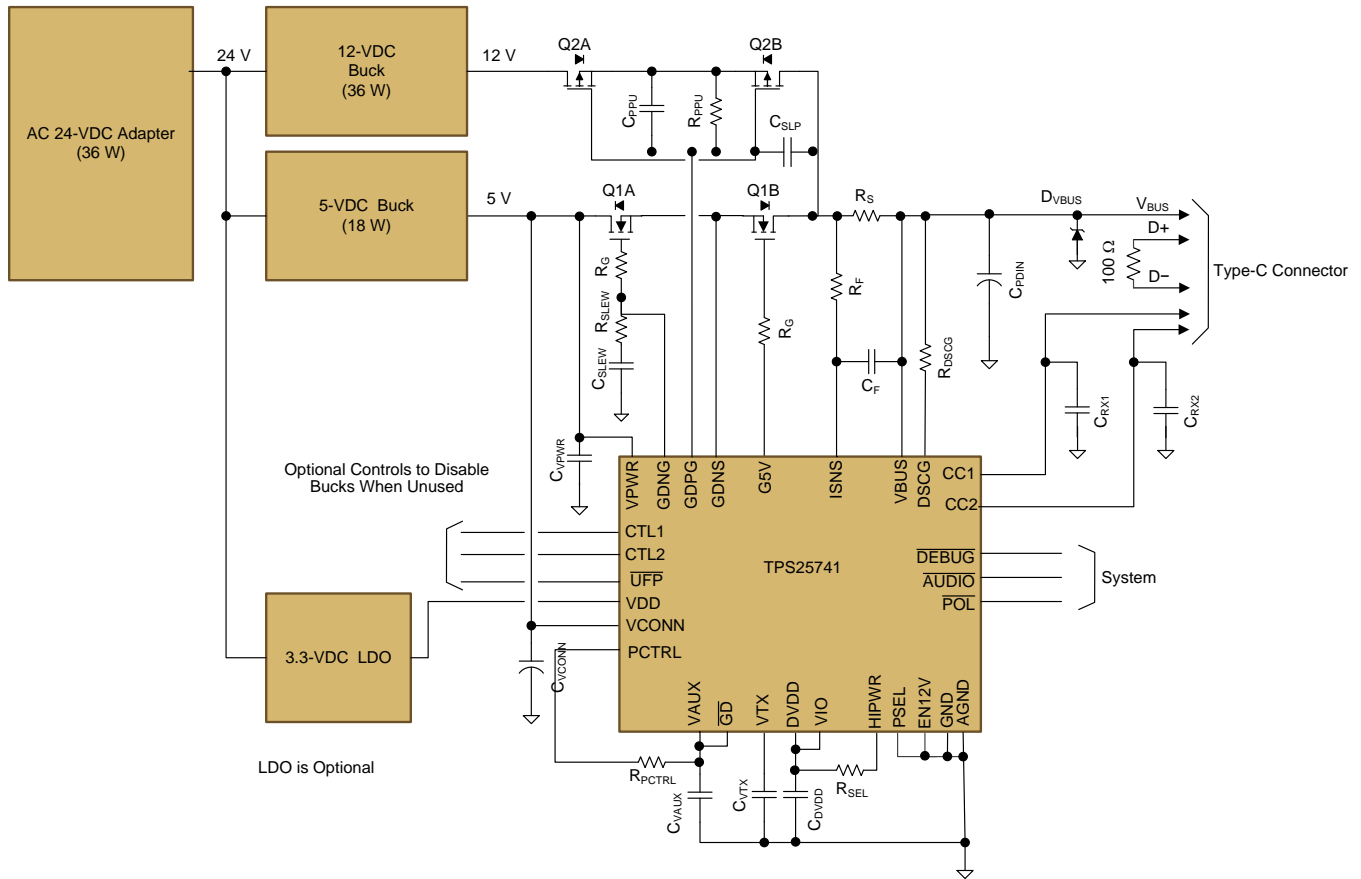
In USB Type-C PD source implementations, the Type-C controller needs to work with the upstream DC-DC to provide voltage to the sink. In many cases, TPS25741 uses CTL1 and CTL2 to control upstream DC-DC to provide requested voltages as Figure 1 shows. This topology is used in applications where the upstream DC-DC is dedicated for USB charging ports like an adaptor or power hub.



Copyright © 2016, Texas Instruments Incorporated

Figure 1. Adapter-Like Application Architecture

However, in complex applications like desktops where two voltages already exist in the system, a new architecture is proposed in Figure 2. In such a system, 5 V and 12 V already exist for other circuits. The TPS25741 can multiplex either one of them onto VBUS, based on different sink requests. This architecture is called power multiplexing. BOM cost and PCB size are reduced because the dedicated USB port DC-DC is not required.



Copyright © 2016, Texas Instruments Incorporated

Figure 2. Desktop-Like Application Architecture: Power Multiplexing

2 Power Multiplexing Design Consideration

2.1 Power Multiplexing Risks

During the multiplexing between two rails, the voltage transition on VBUS should follow the [USB Power Delivery Specification](#)². The two specifications that are commonly violated, if the multiplexing is not properly handled are:

- During voltage transition, the voltage on the VBUS should not drop below $v_{SrcValid}(min)$, which is 4.25 V, according to the PD specification.
- During voltage transition, the slew rate should not exceed $v_{SrcSlewPos}$ ($v_{SrcSlewNeg}$), which is 30 mV/ μ s according to the PD specification.

The two rules are applied to both positive and negative transitions.

The other consideration is that during the negative voltage transition, timing should be strictly controlled to make sure that no high voltage leaks back to the 5-V DC-DC output. If not, upstream circuits including DC-DCs may be damaged by this high voltage because they may be rated for 5 V only.

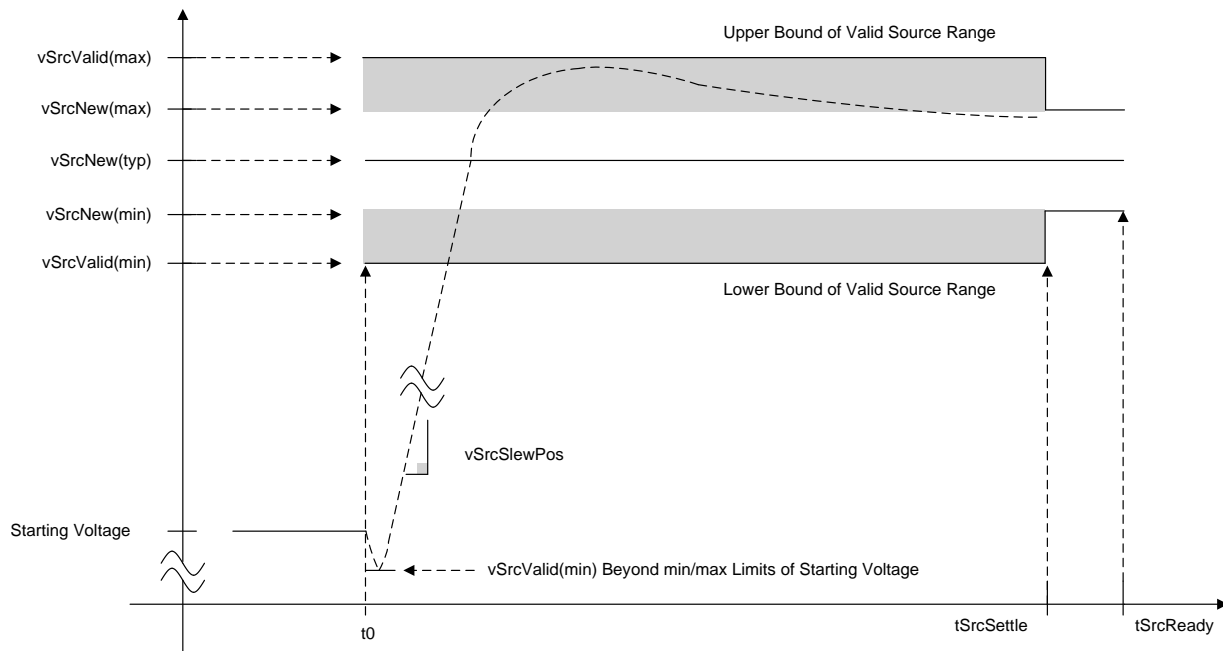


Figure 3. PD Specification on Positive Voltage Transition

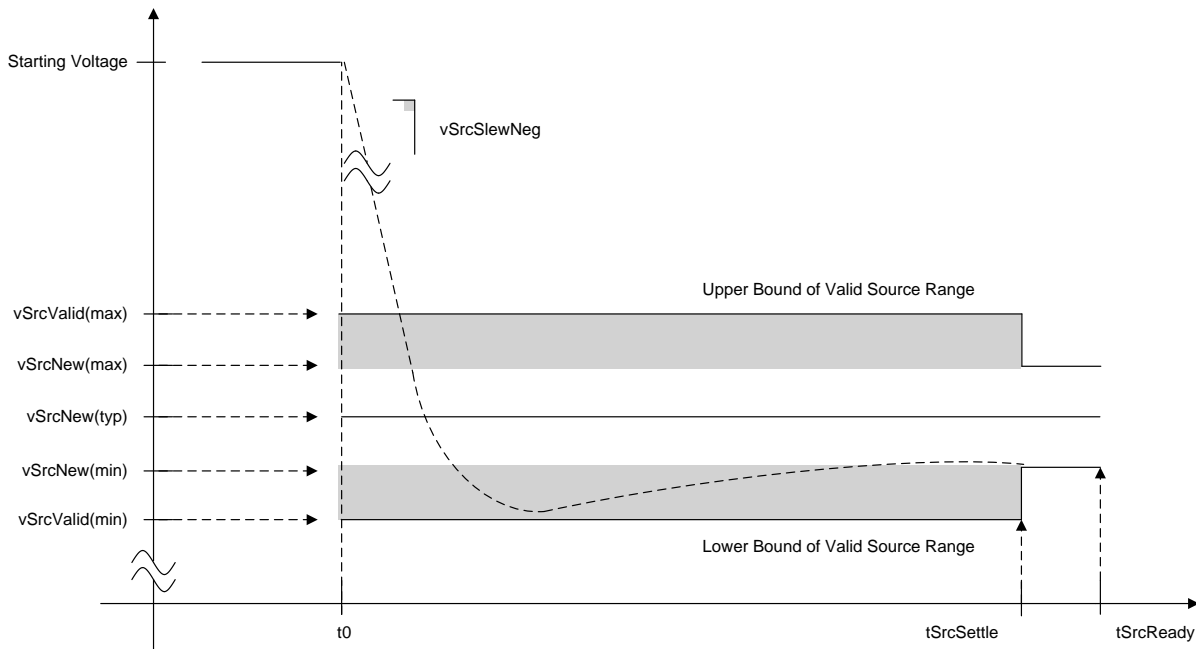
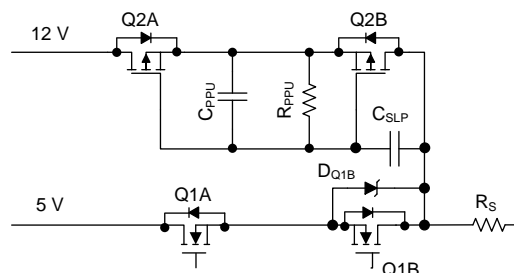


Figure 4. PD Specification on Negative Voltage Transition

2.2 Power Multiplexing With the TPS25741

The TPS25741 adopts a special timing control scheme to make sure the system follows the PD specification and operates safely during power multiplexing with minimum external circuits as Figure 4 shows.

The TPS25741 has 2 N-FET gate drivers to Q1A and Q1B, and one P-FET gate driver to control Q2A and Q2B. Q1 and Q2 are all open when no valid sink is attached. When a 5-V contract is made, Q1A/Q1B are turned on and Q2A/Q2B remain open. So 5 V is applied onto VBUS. When a 12-V contract is made, Q1A remains closed while Q1B is turned off (by the G5V pin). After Q1B is open, then Q2A/Q2B is turned on (by the GDPG pin) applying 12 V onto VBUS. During the dead time between Q1B open and Q2 closed, 5-V current is sourced onto VBUS through the body diode of Q1B so that the voltage drop is small. If the voltage drop must be smaller, then an external Schottky (DQ1B) can be added in parallel with Q1B to achieve minimum voltage drop above vSrcValid(min), which is 4.25 V, according to the [USB Power Delivery Specification](#).



Copyright © 2016, Texas Instruments Incorporated

Figure 5. Implementing Power Multiplexing

When a 5-V contract is made again, VBUS will have a negative transition from 12 V to 5 V. In order to apply 5 V onto VBUS, Q2 should be turned off first and then Q1B should be turned on. However, Q2 requires more time to be turned off than the turn-on time for Q1B. As a result, there is a chance that Q2 is not completely off before Q1B turns on. For this case, 12 V can leak back to the 5-V rail, potentially damaging upstream devices.

The TPS25741 can eliminate the problem by perfectly handling the negative transition. The TPS25741 continuously monitors the voltage on VBUS and only turns on Q1B after VBUS drops below V_{SOVP} , which is 5.65 V. Compared with competitor solutions, such control topology ensures safe operation of power multiplexing with minimum external components.

2.3 Problem Description

With the timing control scheme described in the previous section, the TPS25741 makes sure that system operates properly and safely. As is shown in Figure 6, according to the PD specification, the source bulk capacitance can be as large as 10 μ F, and the bulk capacitance on VBUS, a sink is allowed after a successful negotiation is up to 100 μ F. It means there could be 110- μ F capacitor on the VBUS during the transition.

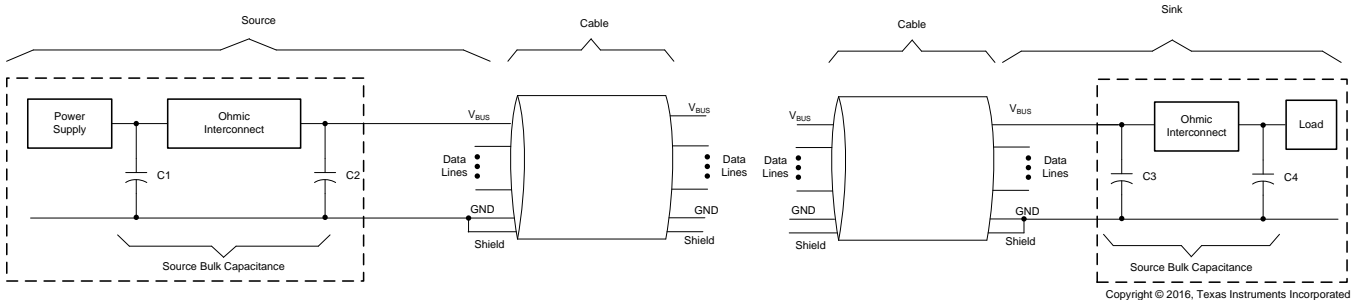


Figure 6. Bulk Capacitor on the VBUS

The larger the capacitor is, the larger the inrush current. When the inrush current goes above the OCP threshold of the TPS25741, gate drivers are shut down. Figure 7 shows when VBUS bulk capacitance is 110 μ F, the system will hit OCP protection during positive voltage transition.

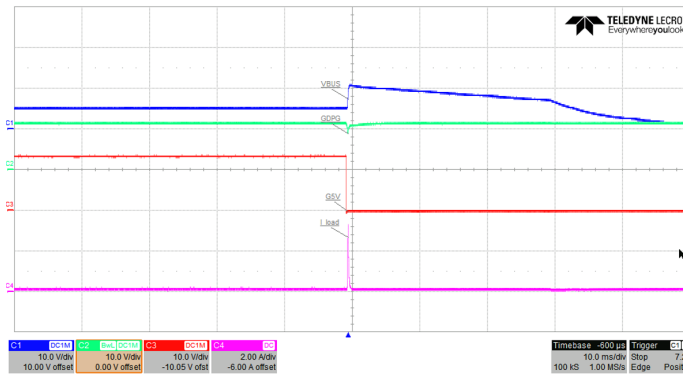


Figure 7. Large In-Rush Current Causes OCP

In order to resist inrush current and also maintain the slew rate within 30 mV/ μ s, the turn-on time of P-FETs should be slowed down by adding slew rate circuits. Conversely, if the turn-on behavior gets slowed down by slew rate circuits, so does the turn-off behavior, as Figure 8 shows. However, when it comes to fault conditions like short circuits, OVP, OCP, P-FETs are usually expected to be turned off very fast in order to protect the system. With the slew rate control circuits, it may not be practical to make P-FETs turn off fast enough. In order to solve this issue, a solution is proposed in Section 2.4 to show how to achieve slow turn-on during positive voltage transition and fast turn-off after faults happen.

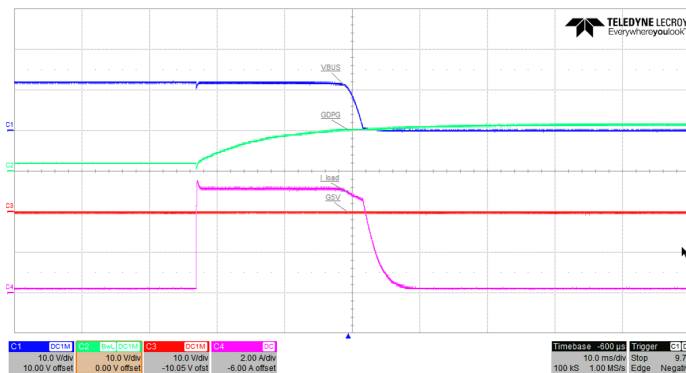
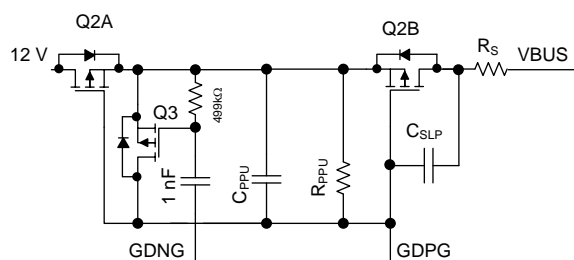


Figure 8. Slew Rate Circuits Cause Delay of Protection

2.4 Solution



Copyright © 2016, Texas Instruments Incorporated

Figure 9. Solution to Achieve Slow Turn-On and Fast Turn-Off

R_{PPU}: R_{PPU} is the Q2 gate-drive pullup resistor. The TPS25741 applies a sink current of 40 mA typical to turn on Q2 and R_{PPU} should be large enough to fully enhance Q2 but not too large as it also discharges C_{SLP} during turn off. The CSD2540Q3 lists an acceptable R_{DS(on)} with V_{GS} = -4.5 V and I_D = -10 A. Using I_{GMV(min)} = 34 mA and V_{GS} = -4.5 V yields R_{PPU} = 132 kΩ. Use a standard 1% resistor = 133-kΩ resistor for R_{PPU}.

C_{SLP}: C_{SLP} provides slew rate and inrush current limiting from the 12-V supply during VBUS transition from 5 V to 12 V. While the sink is attached, there could be as much as 110 μF on VBUS. The slew time must be > 233 μs and the inrush current must be < 3.85 A (V_{ITRIP(min)} / R_S). For this design, target an inrush current of 2 A during 5- to 12-V slew. The charge rate across C_{SLP} is the same as for the 110-μF load capacitor such that I_{LOAD} / C_{LOAD} = I_{C_{SLP}} / C_{SLP}. Using the CSD2540Q3 gate charge curve, a plateau threshold voltage of V_{PTH} at approximately 1.8 V can be used to calculate C_{SLP} with the following equations.

$$C_{SLP} = C_{LOAD} \times \frac{I_{C_{SLP}}}{I_{LOAD}} = C_{LOAD} \times \frac{I_{GDPG} - \frac{V_{PTH}}{R_{PPU}}}{I_{LOAD}}$$

where

- C_{LOAD} = 110 μF
- I_{GDPG} = 40 μA
- V_{PTH} = 1.8 V
- R_{PPU} = 133 kΩ
- I_{LOAD} = 2 A

(1)

$$C_{SLP} = 110 \mu\text{F} \times \frac{40 \mu\text{A} - \frac{1.8 \text{ V}}{133 \text{ k}\Omega}}{2 \text{ A}} = 1.46 \text{ nF}$$

(2)

$$\text{Choose } C_{\text{SLP}} = 1.5 \text{ nF} \quad (3)$$

$$\text{Slew time} = C_{\text{SLP}} \times \frac{12 \text{ V} - 5 \text{ V}}{I_{\text{GDPG}} - \frac{V_{\text{PTH}}}{R_{\text{PPU}}}} = 1.5 \text{ nF} \times \frac{7 \text{ V}}{40 \mu\text{A} - \frac{1.8 \text{ V}}{133 \text{ k}\Omega}} = 397 \mu\text{s} \quad (4)$$

C_{PPU}: C_{PPU} contributes a small Q2 turn-on delay just prior to the 5- to 12-V transition, but the primary function is to inhibit Q2 output turn on during ramp up of the 12-V power supply. When the 12-V power supply is OFF, C_{SLP} is discharged. As the 12-V power supply ramps up, the common sources of Q2 rise and C_{SLP} is charged through R_{PPU}. C_{PPU} is required to prevent Q2 V_{GS} from exceeding the turn-on threshold and prematurely charging VBUS for the case where the 12-V bus ramps up quickly. C_{PPU} and C_{SLP} form a capacitive divider network with V_{GS(th)} » 12 V × C_{SLP} / (C_{SLP} + C_{PPU}). Choose C_{PPU} » (12 V / V_{GS(th)} - 1) × C_{SLP}. For this example, V_{GS(th)} = 0.9 V and C_{PPU} = 18 nF. If the 12-V power supply is enabled while the 5-V supply is on, then C_{PPU} can be smaller, set by the voltage difference between the 12- and 5-V supply. Always validate the final design on the test bench.

For faster fault turn off, Q3 can be connected as shown and triggered using the GDNG pin. Whenever a fault happens, the TPS25741 pulls GDNG to 0 V. With a small capacitor in series between the gate of Q3 and GDNG, the gate of Q3 is pulled down by GDNG; therefore, Q3 is closed and shorts the GS of Q2, resulting in a fast shut-off of Q2.

Note that such circuits can also be applied to 5- to 20-V transition applications, and Q3 must have a ±20 V V_{GS(max)} rating for 20-V multiplexing applications.

3 Testing

Figure 10 through Figure 17 illustrate the test results for this report.

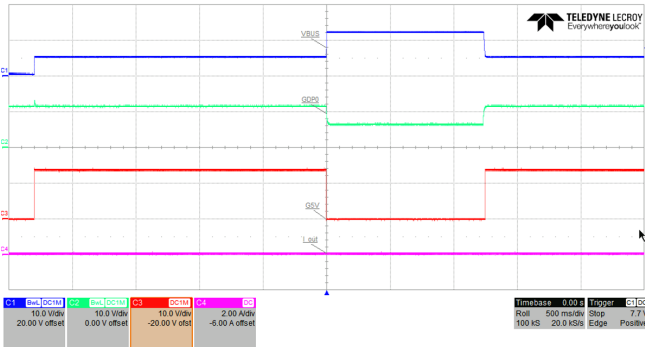


Figure 10. Mux Between 5 V and 12 V at No Load

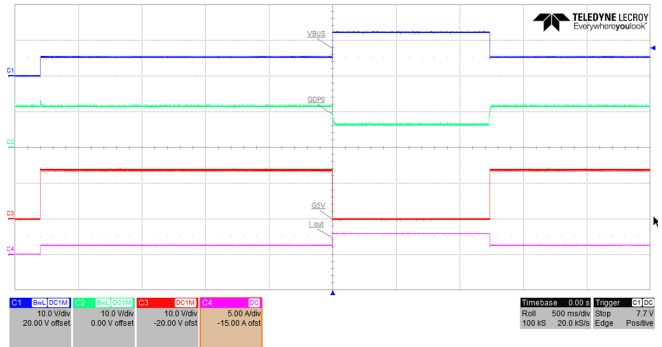


Figure 11. Mux Between 5 V and 12 V at 3 A

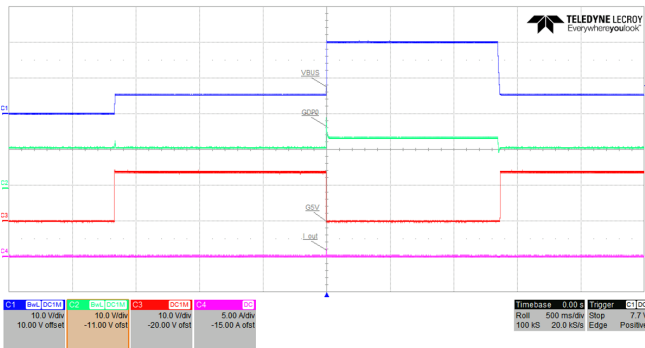


Figure 12. Mux Between 5 V and 20 V at No Load

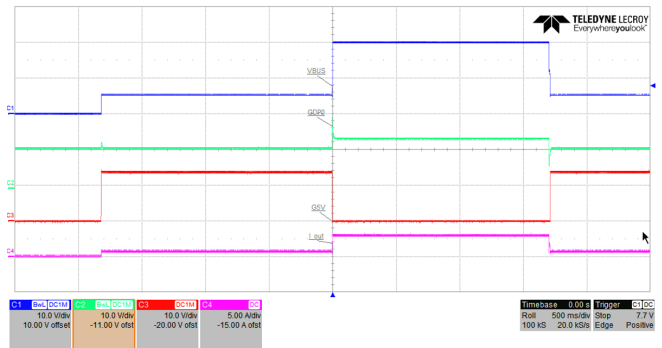


Figure 13. Mux Between 5 V and 20 V at 3 A

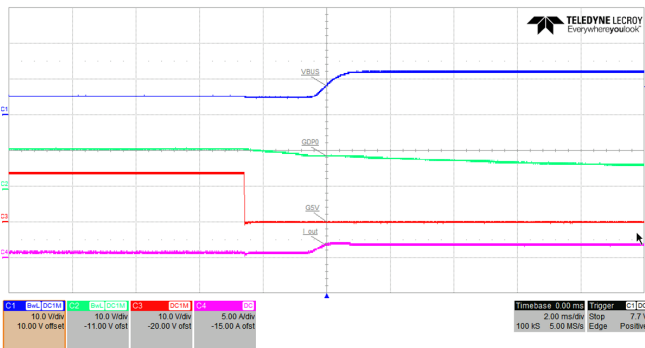


Figure 14. 5- to 12-V Transition

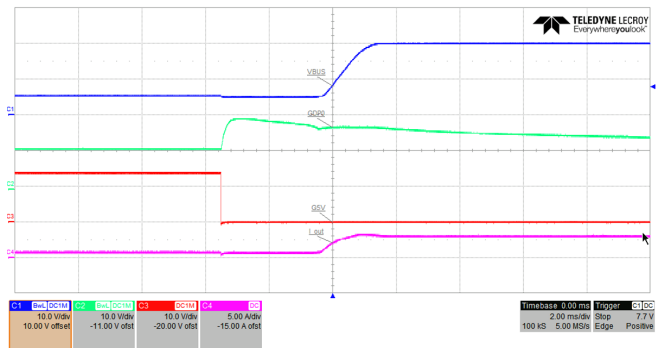
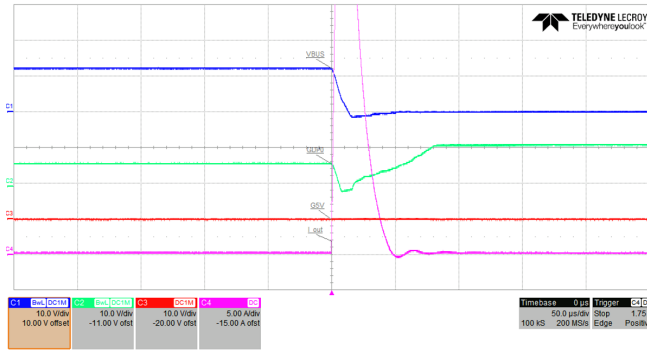
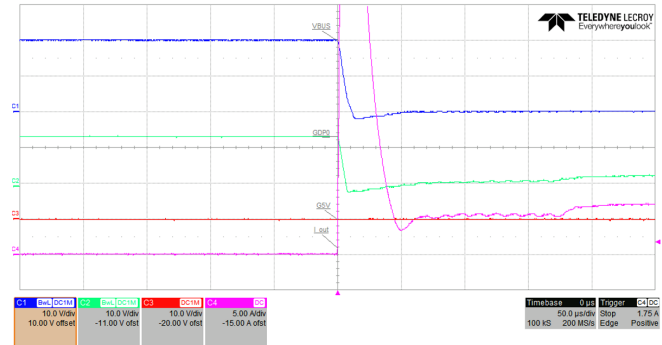


Figure 15. 5- to 20-V Transition


Figure 16. Hot Short on Output 12 V

Figure 17. Hot Short on Output 20 V

4 Conclusion

The guidelines in this application report describe how the TPS25741 handles power multiplexing to make sure the system operates safely and follows the [USB Power Delivery Specification](#). It also provides a solution to achieve a slow turn-on of PFETs to resist inrush current during positive voltage transition while achieving fast shut-down during fault conditions.

5 References

1. [TPS25741, TPS25741A USB Type-C™ and USB Power Delivery Host Port Controllers, data sheet \(SLVSDJ5\)](#)
2. [USB Power Delivery Specification Rev. 2.0 \(part of USB 3.1 download\)](#)
3. [TPS25741EVM-802 and TPS25741AEVM-802 EVM User's Guide for Desktops \(SLVUAS7\)](#)

IMPORTANT NOTICE

Texas Instruments Incorporated and its subsidiaries (TI) reserve the right to make corrections, enhancements, improvements and other changes to its semiconductor products and services per JESD46, latest issue, and to discontinue any product or service per JESD48, latest issue. Buyers should obtain the latest relevant information before placing orders and should verify that such information is current and complete. All semiconductor products (also referred to herein as "components") are sold subject to TI's terms and conditions of sale supplied at the time of order acknowledgment.

TI warrants performance of its components to the specifications applicable at the time of sale, in accordance with the warranty in TI's terms and conditions of sale of semiconductor products. Testing and other quality control techniques are used to the extent TI deems necessary to support this warranty. Except where mandated by applicable law, testing of all parameters of each component is not necessarily performed.

TI assumes no liability for applications assistance or the design of Buyers' products. Buyers are responsible for their products and applications using TI components. To minimize the risks associated with Buyers' products and applications, Buyers should provide adequate design and operating safeguards.

TI does not warrant or represent that any license, either express or implied, is granted under any patent right, copyright, mask work right, or other intellectual property right relating to any combination, machine, or process in which TI components or services are used. Information published by TI regarding third-party products or services does not constitute a license to use such products or services or a warranty or endorsement thereof. Use of such information may require a license from a third party under the patents or other intellectual property of the third party, or a license from TI under the patents or other intellectual property of TI.

Reproduction of significant portions of TI information in TI data books or data sheets is permissible only if reproduction is without alteration and is accompanied by all associated warranties, conditions, limitations, and notices. TI is not responsible or liable for such altered documentation. Information of third parties may be subject to additional restrictions.

Resale of TI components or services with statements different from or beyond the parameters stated by TI for that component or service voids all express and any implied warranties for the associated TI component or service and is an unfair and deceptive business practice. TI is not responsible or liable for any such statements.

Buyer acknowledges and agrees that it is solely responsible for compliance with all legal, regulatory and safety-related requirements concerning its products, and any use of TI components in its applications, notwithstanding any applications-related information or support that may be provided by TI. Buyer represents and agrees that it has all the necessary expertise to create and implement safeguards which anticipate dangerous consequences of failures, monitor failures and their consequences, lessen the likelihood of failures that might cause harm and take appropriate remedial actions. Buyer will fully indemnify TI and its representatives against any damages arising out of the use of any TI components in safety-critical applications.

In some cases, TI components may be promoted specifically to facilitate safety-related applications. With such components, TI's goal is to help enable customers to design and create their own end-product solutions that meet applicable functional safety standards and requirements. Nonetheless, such components are subject to these terms.

No TI components are authorized for use in FDA Class III (or similar life-critical medical equipment) unless authorized officers of the parties have executed a special agreement specifically governing such use.

Only those TI components which TI has specifically designated as military grade or "enhanced plastic" are designed and intended for use in military/aerospace applications or environments. Buyer acknowledges and agrees that any military or aerospace use of TI components which have **not** been so designated is solely at the Buyer's risk, and that Buyer is solely responsible for compliance with all legal and regulatory requirements in connection with such use.

TI has specifically designated certain components as meeting ISO/TS16949 requirements, mainly for automotive use. In any case of use of non-designated products, TI will not be responsible for any failure to meet ISO/TS16949.

Products

Audio	www.ti.com/audio
Amplifiers	amplifier.ti.com
Data Converters	dataconverter.ti.com
DLP® Products	www.dlp.com
DSP	dsp.ti.com
Clocks and Timers	www.ti.com/clocks
Interface	interface.ti.com
Logic	logic.ti.com
Power Mgmt	power.ti.com
Microcontrollers	microcontroller.ti.com
RFID	www.ti-rfid.com
OMAP Applications Processors	www.ti.com/omap
Wireless Connectivity	www.ti.com/wirelessconnectivity

Applications

Automotive and Transportation	www.ti.com/automotive
Communications and Telecom	www.ti.com/communications
Computers and Peripherals	www.ti.com/computers
Consumer Electronics	www.ti.com/consumer-apps
Energy and Lighting	www.ti.com/energy
Industrial	www.ti.com/industrial
Medical	www.ti.com/medical
Security	www.ti.com/security
Space, Avionics and Defense	www.ti.com/space-avionics-defense
Video and Imaging	www.ti.com/video

TI E2E Community

e2e.ti.com