

Application Note

# Common Software Use Case Examples with TI Smart Fuse High-Side Switches

---



Timothy Logan

**ABSTRACT**

The smart fuse high-side switch portfolio (HCS device family) from Texas Instruments provides a versatile and powerful set of devices that allow for seamless replacement of physical melting fuse devices with a configurable semiconductor design in automotive applications. The HCS high-side switch device family uses SPI as it means of communication to configure various parameters such as capacitive charging/I2T as well as read out diagnostics such as current sense (through an integrated ADC) and fault detection. To simplify software development, Texas Instruments provides a full suite of software drivers and code examples across multiple processor or microcontroller platforms (both from Texas Instruments and otherwise). This application note dives deep into all aspects of the smart fuse software ecosystem from Texas Instruments including the top level drivers, configuration/evaluation tool, and a full set of code examples that show common use cases of the underlying smart fuse devices.

---

**Table of Contents**

<b>1 Software Ecosystem</b>	<b>2</b>
<b>2 Platform Drivers</b>	<b>3</b>
2.1 Driver Concept	3
2.2 Supported Platforms	4
2.3 Porting to Other Platforms	5
2.4 API Guide	6
<b>3 Configuration or Evaluation Tool</b>	<b>10</b>
<b>4 Code Examples</b>	<b>12</b>
4.1 Empty Example	12
4.2 I2T Trip Example	12
4.3 Low-Power Mode Example	13
4.4 Current Sense Example	13
<b>5 Summary</b>	<b>14</b>
<b>6 References</b>	<b>15</b>

**Trademarks**

All trademarks are the property of their respective owners.

# 1 Software Ecosystem

The smart fuse ecosystem from Texas Instruments consists of the following software components:

**Table 1-1. Smart Fuse Collateral Offering**

Collateral Name	Description
<a href="#">Smart Fuse Configurator</a>	Host GUI tool used to configure TPSxHCxx-Q1 device and export C configuration file for software development. This software is also used to control the HSS-HCSMOTHERBRDEVM and corresponding daughter cards.
<a href="#">Device Specific C Headers Files</a>	Header file representation of the HCS device's register map. This file contains all register definitions and enumerations of the device.
<a href="#">HCS Platform Drivers</a>	Generic set of drivers with a lower level SPI driver porting layer. Implementation examples are provided for a variety of processors/microcontrollers.
<a href="#">Application Code Examples</a>	Common set of code examples that show case some common functionality and differentiation of using the HCS family of high-side switches from Texas Instruments.

A software package containing the HCS Platform Drivers and Application code examples can be found on the corresponding software page. The drivers and code examples are BSD licensed open source allowing for flexible porting/re-use. The software package can be found at [HCS-SMARTFUSE-DRIVERS](#).

Note that the functionality of the Smart Fuse Configurator software with relation to the HSS-HCSMOTHERBRDEVM are detailed in the [Smart Fuse Evaluation Module](#), user's guide.

All pieces of the software collateral are designed to work with each other, simplify software development, and make it as easy as possible to get started with using the HCS family of high-side switches. A standard development flow can include the following steps:

1. Use the [Smart Fuse Configurator](#) to generate the initial configuration. These settings will be loaded to the high-side switch over SPI by the microcontroller during boot-up. The settings include current limit configuration, capacitive charge modes, and any specific I2T turning required based on the specific wire gauge curve.
2. Once configured, the software exports a generic C files that contain a generic C structure that is used for initial configuration/programming.
3. A pointer of this configuration structure is passed into the [Section 2.4.9](#) API. The driver then programs all of the relevant registers of the device. This API is typically called once on the microcontroller boot/initialization.

Each one of these steps and individual components are described in the following sections.

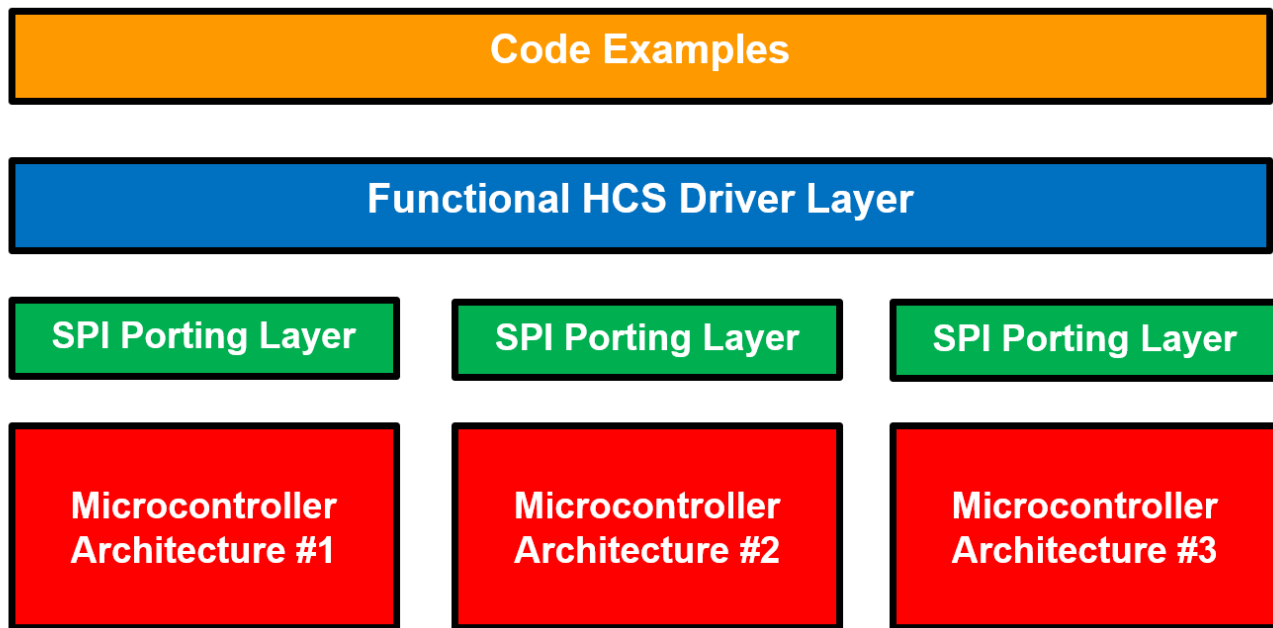
## 2 Platform Drivers

### 2.1 Driver Concept

The suite of drivers that Texas Instruments provides for the HCS family of smart fuse high-side switches were designed to be generic and allow for complete configuration and utilization of the underlying device. Features of these drivers include:

- Initial configuration through exported file from the Smart Fuse Configurator software.
- Generic register reads/writes with support for returning individual transaction headers.
- Convenience functions that convert raw ADC results from the high-side switch's ADC registers to a human readable float value.
- Functions that provide both device and channel level diagnostic status.

The drivers and relation to the provided code examples are shown in [Figure 2-1](#):



**Figure 2-1. Driver Architecture**

The top level driver APIs have the HCS\_ prefix to signify the HCS family of smart fuse devices and are provided in ***hcs\_control\_driver.h*** and ***hcs\_control\_driver.c*** from the software package. The top level code examples use these APIs to provide a generic set of functionality to control and configure the high-side switch. For the physical SPI communication, a set of external functions are declared in ***hcs\_control\_driver.h***:

```
/* ----- Porting Functions ----- */
/*
 * These functions need to be implemented by each individual device port. The functions
 * handle the low-level hardware specific implementation with the respective
 * architecture's specific hardware peripherals (SPI and GPIO)
 */
bool HCS_port_spiSendData(uint8_t *data, uint8_t len, uint8_t* respData);
void HCS_port_assertSPI(void);
void HCS_port_deassertSPI(void);
```

These functions are defined in each individual architecture implementation and handle the hardware SPI interaction of each platform. More details of porting these functions to additional architectures can be found in the [Section 2.3](#). A full list of APIs including functionality, parameters, and return values can be found in [Section 2.4](#).

## 2.2 Supported Platforms

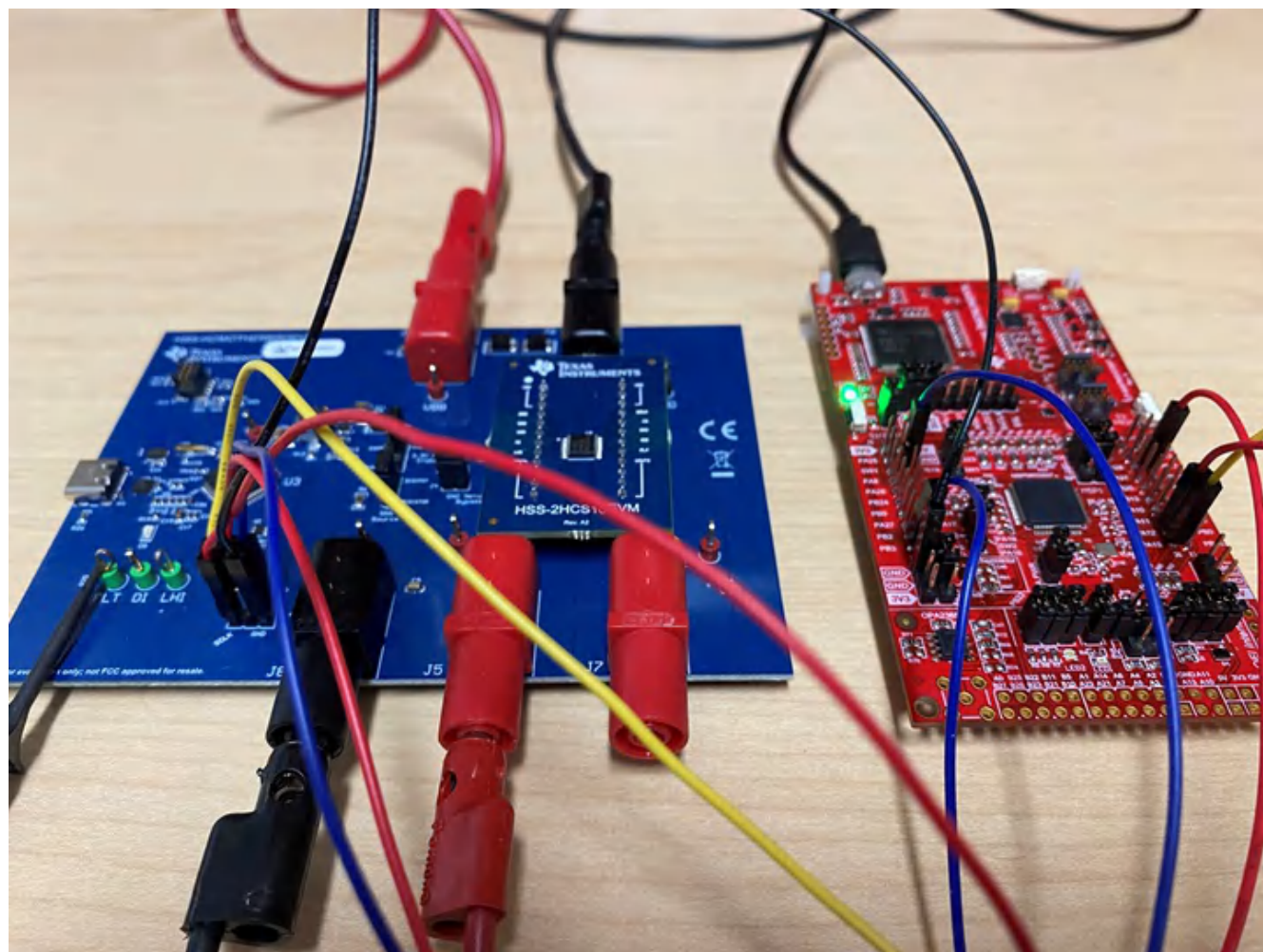
The smart fuse driver and configuration package contains example implementations for a variety of different microcontrollers or processors. Additional implementations are routinely added, however a list of current architectures and the relevant development kits are shown in [Table 2-1](#):

**Table 2-1. Supported Platforms**

Architecture	Development Board	Ecosystem Notes
<a href="#">Texas Instruments MSPM0G3507-Q1</a>	<a href="#">LP-MSPM0G3507</a>	<a href="#">Code Composer Studio Theia</a>
<a href="#">STMicroelectronics STM32H723ZGT6</a>	<a href="#">NUCLEO-H723ZG</a>	<a href="#">STM32CubeIDE</a>

Additional device support can be added by implementing the relevant device level functions described in [Section 2.3](#).

The HSS-HCMOTHERBRDEVM has generic SPI headers that can be used to *plug in* external SPI signals to the attached high-side switch daughter card. During development of the code examples and HCS platform drivers, the development boards listed below were used in tandem with the HSS-HCMOTHERBRDEVM for validation. An example of the LP-MSPM0G3507 evaluation module used in this configuration can be found below in [Figure 2-2](#):



**Figure 2-2. Connected MSPM0+**

The following shows a connection using the NUCLEO-H723ZG board:



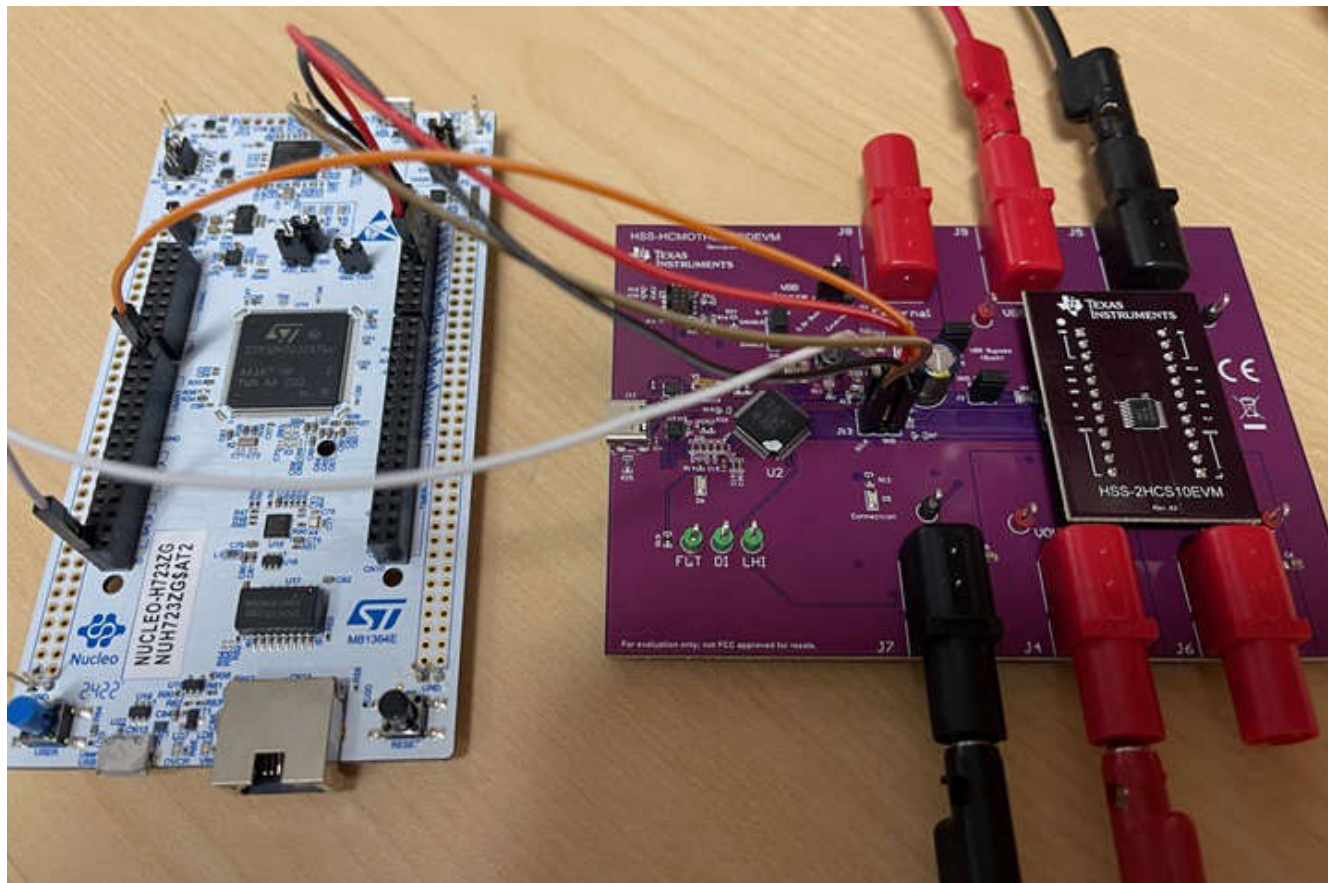


Figure 2-3. NUCLEO-H723ZG Connection

## 2.3 Porting to Other Platforms

While a variety of example architecture implementations are provided, the HCS platform drivers are architected to be easily ported to any microprocessor or architecture that supports SPI and the C programming language. In the header file for the drivers (*hcs\_control\_driver.h*), the following two functions are declared with an extern reference:

```
/* ----- Porting Functions ----- */
/*
 * These functions need to be implemented by each individual device port. The functions
 * handle the low-level hardware specific implementation with the respective
 * architecture's specific hardware peripherals (SPI and GPIO)
 */
bool HCS_port_spiSendData(uint8_t *data, uint8_t len, uint8_t* respData);
void HCS_port_assertSPI(void);
void HCS_port_deassertSPI(void);
```

Porting is meant to be straight forward, however a description of each function and guidance for porting is shown in [Table 2-2](#).

**Table 2-2. Architecture Porting Functions**

Function	Description	Return Value
HCS_port_spiSendData	Performs a full-duplex SPI transaction. <b>data</b> represents the data to be sent and <b>respData</b> is the data that is received. <b>len</b> is the length of the transaction. The function needs to be blocking (either by sleeping or polling) until the entirety of the SPI transaction is complete.	stdbool representation of result of transaction. <b>true</b> if transaction completed without issue, <b>false</b> otherwise.
HCS_port_assertSPI	Sets the chip select (CS) line of the SPI bus low. This is used for both single and daisy chained transactions as well as used by the HCS_port_spiSendData function above.	None
HCS_port_deassertSPI	Sets the chip select (CS) line of the SPI bus high. This is used for both single and daisy chained transactions as well as used by the HCS_port_spiSendData function above.	None

## 2.4 API Guide

### References

- [Section 2.4.1](#)
- [Section 2.4.2](#)
- [Section 2.4.3](#)
- [Section 2.4.4](#)
- [Section 2.4.5](#)
- [Section 2.4.6](#)
- [Section 2.4.7](#)
- [Section 2.4.8](#)
- [Section 2.4.9](#)
- [Section 2.4.10](#)
- [Section 2.4.11](#)
- [Section 2.4.12](#)
- [Section 2.4.13](#)
- [Section 2.4.14](#)

### 2.4.1 tHCSResponseCode Union Reference

#### Data Fields

- uint8\_t byte
- struct {
- unsigned I2T\_FLT: 1
- unsigned LPM\_FLT: 1
- unsigned CHAN\_TSD: 1
- unsigned ILIMIT\_FLT: 1
- unsigned SHRT\_VBB\_FLT: 1
- unsigned OL\_FLT: 1
- unsigned SUPPLY\_FLT: 1
- unsigned GLOBAL\_ERR\_WRN: 1
- } bits

#### 2.4.2 *float\_t HCS\_convertCurrent (uint16\_t rawValue, uint16\_t ksnsVal, uint16\_t snsRes)*

Converts a raw ADC current value to a readable float value.

This is a convenience function that can take a raw value read from one of the ADC result registers and convert the register into a human readable float value.

**Table 2-3. Parameters**

in	<i>rawValue</i>	Raw value to convert
in	<i>ksnsVal</i>	KSNS constant from the data sheet
in	<i>snsRes</i>	Value of resistor on the SNS pin

**Table 2-4. Return Values**

<i>returnCode</i>	Floating point representation of current
-------------------	--

#### 2.4.3 *float\_t HCS\_convertTemperature (uint16\_t rawValue)*

Converts a raw ADC temperature value to a readable float value.

This is a convenience function that can take a raw value read from one of the ADC result registers and convert it into a human readable float value.

**Table 2-5. Parameters**

in	<i>rawValue</i>	Raw value to convert
----	-----------------	----------------------

**Table 2-6. Return Values**

<i>returnCode</i>	Floating point representation of temperature
-------------------	--

#### 2.4.4 *float\_t HCS\_convertVoltage (uint16\_t rawValue)*

Converts a raw ADC voltage value to a read float value.

This is a convenience function that can take a raw value read from one of the ADC result registers and convert the value into a human readable float value.

**Table 2-7. Parameters**

in	<i>rawValue</i>	Raw value to convert
----	-----------------	----------------------

**Table 2-8. Return Values**

<i>returnCode</i>	Floating point representation of voltage
-------------------	--

**Table 2-9. Return Values**

<i>returnCode</i>	An instance of <b>tHCSResponseCode</b>
-------------------	--

#### 2.4.5 *tHCSResponseCode HCS\_getChannelFaultStatus (uint8\_t chanNum, uint16\_t \*fltStatus)*

Reads an individual channel's fault status.

Reads the individual channel's fault status and stores the status into fltStatus

**Table 2-10. Parameters**

in	<i>chanNum</i>	Channel number to read
out	<i>fltStatus</i>	Fault status can be stored here

#### 2.4.6 *tHCSResponseCode* **HCS\_getDeviceFaultSatus** (*uint16\_t \*fltStatus*)

Reads the device's fault status.

Reads the device's fault status and stores the status into fltStatus

**Table 2-11. Parameters**

out	<i>fltStatus</i>	Fault status can be stored here
-----	------------------	---------------------------------

**Table 2-12. Return Values**

<i>returnCode</i>	An instance of <b>tHCSResponseCode</b>
-------------------	--

#### 2.4.7 *tHCSResponseCode* **HCS\_gotoLPM** (*lpm\_exit\_curr\_ch1\_t ch1ExitCurrent, lpm\_exit\_curr\_ch2\_t ch2ExitCurrent*)

Puts the device into LPM mode.

This function can send the command to go into LPM mode. The MCU is responsible to monitor the FLT pin for a falling edge if the exit current if the device exceeds the exit current level. Alternatively, the HCS\_wakeupDevice function can be used to wakeup the device.

**Table 2-13. Parameters**

in	<i>ch1ExitCurrent</i>	Exit current for channel 1
in	<i>ch2ExitCurrent</i>	Exit current for channel 2

#### 2.4.8 *tHCSResponseCode* **HCS\_gotoSleep** (*void*)

Puts the device into SLEEP mode.

This function can send the command to go into SLEEP mode. Note that all values in the device's registers can be reset after exiting sleep mode. The device needs to be woken up by the HCS\_wakeupDevice function.

**Table 2-14. Return Values**

<i>returnCode</i>	An instance of <b>tHCSResponseCode</b>
-------------------	--

#### 2.4.9 *tHCSResponseCode* **HCS\_initializeDevice** (*TPS2HCS10Q1\_CONFIG \*config*)

Initializes the device with device configuration structure.

This function can take a configuration structure that is generated from the Smart Fuse Configurator GUI software and send all of the values to the attached high-side switch. The common practice here is to call this function on initial boot of the MCU or when the device wakes up from sleep mode with all of the register configurations lost.

**Table 2-15. Parameters**

in	<i>config</i>	Pointer to configuration structure
----	---------------	------------------------------------

**Table 2-16. Return Values**

<i>returnCode</i>	An instance of <b>tHCSResponseCode</b>
-------------------	--

#### 2.4.10 *tHCSResponseCode* **HCS\_readRegister** (*uint8\_t addr, uint16\_t \*readValue*)

Performs a raw register read for specified register address.

This function performs a simple register read from the given address and populates the provided pointer with the register contents.

**Table 2-17. Parameters**

in	<i>addr</i>	Register address to read
out	<i>payload</i>	Value of register populated to this parameter

**Table 2-18. Return Values**

<i>returnCode</i>	An instance of <b>tHCSResponseCode</b>
-------------------	--



#### 2.4.11 *tHCSResponseCode* *HCS\_setSwitchState (uint8\_t swState)*

Sets the on/off switch state status per channel.

This can turn on or off a channel of the high-side switch. The parameter is a bitwise representation of the channels to be enabled.

**Table 2-19. Parameters**

in	<i>swState</i>	Pointer to configuration structure
----	----------------	------------------------------------

**Table 2-20. Return Values**

<i>returnCode</i>	An instance of <b>tHCSResponseCode</b>
-------------------	--

#### 2.4.12 *tHCSResponseCode* *HCS\_updateConfig (TPS2HCS10Q1\_CONFIG \* config)*

Updates the provided configuration with smart fuse settings.

This API can populate the provided configuration structure with the values from the high-side switch. The can be used when the host software changes settings within the register and wants to update the initial configuration structure.

**Table 2-21. Parameters**

out	<i>config</i>	Pointer to configuration structure
-----	---------------	------------------------------------

**Table 2-22. Return Values**

<i>returnCode</i>	An instance of <b>tHCSResponseCode</b>
-------------------	--

#### 2.4.13 *tHCSResponseCode* *HCS\_wakeupDevice (void)*

Wakes up the device from sleep mode.

This API simply issues a dummy write to register address 0xFF (which does not exist) so that the device wakes from sleep mode. Since the device wakes from sleep mode via a CS pin transition, the dummy write causes the device to wake up.

**Table 2-23. Return Values**

<i>returnCode</i>	An instance of <b>tHCSResponseCode</b>
-------------------	--

#### 2.4.14 *tHCSResponseCode* *HCS\_writeRegister (uint8\_t addr, uint16\_t payload)*

Performs a raw register write for specified register address.

This function performs a simple register write to the given address with the provided payload

**Table 2-24. Parameters**

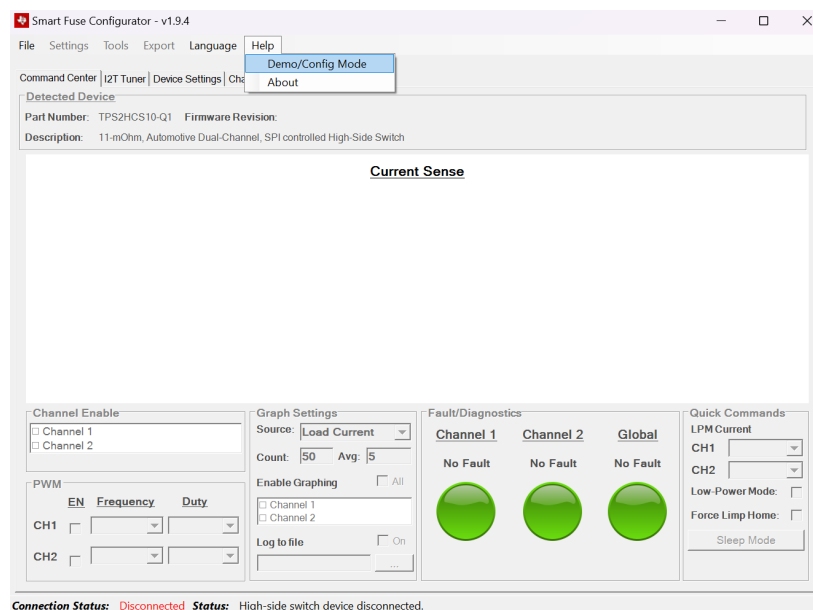
in	<i>addr</i>	Register address to write
in	<i>payload</i>	Value to write to addr

**Table 2-25. Return Values**

<i>returnCode</i>	An instance of <b>tHCSResponseCode</b>
-------------------	--

### 3 Configuration or Evaluation Tool

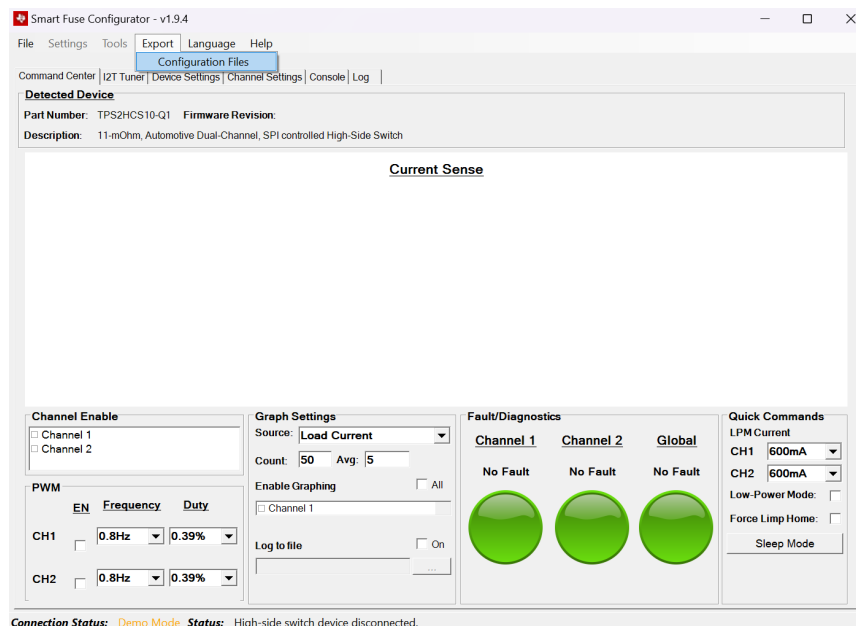
The Smart Fuse Configurator tool is a software host tool that can be used along side of the HSS-HCMOTHERBRDEVM to live configure an HCS high-side switch as well as read out diagnostics such as current sense and fault conditions. Additionally, starting from version 1.9.4 the software has the ability to enter *configuration mode* without the need for a physical EVM board. In configuration mode, the user is able to change all different aspects of the device's settings such as current limit, capacitive charging modes, diagnostic reporting, and so on. The user can also use the I2T tuner to configure the device to match the wire profile and capabilities of the melting fuse being replaced. To enter configuration mode, select **Help->Demo/Config Mode** as shown in Figure 3-1:



**Figure 3-1. Configuration Mode**

Once in demo mode, the user can use the software as described in the Smart Fuse Evaluation Module user's guide. Note that actual communication with the EVM are not performed in this mode and any diagnostics reported on the GUI are also not reflected. Demo mode can be exited by either selecting **Help->Demo/Config Mode** or by plugging in an EVM to the device.

Once the device has been configured to meet the application needs, the configuration can be exported by selecting **Export->Configuration Files**:



**Figure 3-2. Export Configuration**

The files that are exported from this dialog are the same configuration files that come packaged with the provided code examples (default titled *tps2hcs10\_config.h* and *tps2hcs10\_config.c*). As an easy point-of-entry, the configuration files can be exported to the [Section 4.1](#) and override the defaults file for a blank program used to start smart fuse development.

Note that the exported configuration files depend on the device specific header file that is provided on the project page. This header file contains all off the register definitions and enumerations relevant to the specific high-side switch part number.

The exported files contains a register definition that corresponds to every relevant configuration register of the device:

```
typedef struct TPS2HCS10Q1_CONFIG
{
    TPS2HC10S_CRC_CONFIG_OBJ      crcConfig;
    TPS2HC10S_LPM_OBJ             lpmConfig;
    TPS2HC10S_FAULT_MASK_OBJ      faultMaskConfig;
    TPS2HC10S_SW_STATE_OBJ        swState;
    TPS2HC10S_DEVICE_SAF_OBJ      devSAFConfig;
    TPS2HC10S_DEV_CONFIG_OBJ      devConfig;
    TPS2HC10S_ADC_CONFIG_OBJ      adcConfig;
    TPS2HC10S_PWM_CH1_OBJ         pwmCh1Config;
    TPS2HC10S_ILIM_CONFIG_CH1_OBJ ilimCh1Config;
    TPS2HC10S_DIAG_CONFIG_CH1_OBJ diagConfigCh1;
    TPS2HC10S_I2T_CONFIG_CH1_OBJ  i2tConfigCh1;
    TPS2HC10S_PWM_CH2_OBJ         pwmCh2Config;
    TPS2HC10S_ILIM_CONFIG_CH2_OBJ ilimCh2Config;
    TPS2HC10S_DIAG_CONFIG_CH2_OBJ diagConfigCh2;
    TPS2HC10S_I2T_CONFIG_CH2_OBJ  i2tConfigCh2;
} TPS2HCS10Q1_CONFIG;
```

A pointer to this function is passed into the [Section 2.4.9](#) function of the platform driver (typically at microcontroller boot-up) to initially configure the high-side switch. After the structure definition, an instantiation of the structure is declared with values that represent all of the configured value from the Smart Fuse Configurator tool. The user can use this instantiation as a starting point and update manually through the code if a change is required, or regenerate the configuration file from the Smart Fuse Configurator program.

## 4 Code Examples

As part of the smart fuse software package, a set of code examples are provided that highlight both the functionality or differentiation of the smart fuse device family as well as the ease-of-use of the HCS platform drivers. A summary of the available code examples are shown in [Table 4-1](#).

**Table 4-1. Smart Fuse Code Examples**

Code Example Name	Description
<a href="#">Empty</a>	Simple code example that initializes the high-side switch from a Smart Fuse Configurator exported structure.
<a href="#">I2T Trip</a>	Showcases I2T functionality and how to detect/recover from an I2T fault.
<a href="#">Low-Power Mode</a>	Puts the device into low-power mode and waits for a wake-up event
<a href="#">Current Sense</a>	Demonstrates how to use the HCS family's high-accuracy current sense and optimize readings for both lower and higher currents

### 4.1 Empty Example

The empty code example is a simple code example that is used to serve as a starting point for smart fuse applications. All this code example does is boot up, configure the underlying SPI peripheral, and then pass control off to the user. The main part of the initial configuration are shown in the following:

```
/* Configuring the device initially */
HCS_wakeupDevice();
HCS_initializeDevice(&exportConfig);
```

The [Section 2.4.13](#) function simply issues a dummy write to the device. Out of reset, the HCS family is in sleep mode. The wakeup function issues a write to register 0xFF (which doesn't exist) to make sure that the device is out of sleep.

The [Section 2.4.9](#) function takes the configuration file exported from the Smart Fuse Configurator application and loads it into the high-side switch. This function is typically called every time on MCU boot-up to initialize the high-side switch.

### 4.2 I2T Trip Example

The I2T trip code examples shows how to handle an event on the high-side switch when an I2T event happens in the system. This code example assumes that the device is setup to LATCH mode for I2T faults and shows the correct sequence of events to *reset* the device after the I2T event occurs. In auto-retry mode (where TCLDN\_CHx of the I2T\_CONFIG\_CHx register are set to a timeout), the device automatically waits the appropriate duration of time before re-enabling the channel.

Note, that in this code example the FAULT pin is setup to be used as a falling edge interrupt. When the I2T trip occurs, the FAULT pin (which is open drain) is pulled low and the microcontroller is interrupted. The software on the microcontroller can then wake up device execution and take the necessary mitigations to re-enable the device. In LATCH mode, the appropriate steps to take after the I2T trip event occurs is to:

1. Disable the affected channel
2. Set the TCLDN\_CHx of the I2T\_CONFIG\_CHx register to an appropriate cool-down time
3. Wait the specified duration by sleeping on the microcontroller
4. Set the TCLDN\_CHx of the I2T\_CONFIG\_CHx register back to LATCH mode
5. Re-enable the channel

The following is a relevant snippet of code:

```
if(currentValue & TPS2HC10S_FLT_STAT_CH1_I2T_FLT_CH1_MASK)
{
    /* Disabling the channel */
    HCS_setSwitchState(0);

    /* Setting the device to 2s retry state */
    exportConfig.i2tConfigCh1.value.bits.TCLDN_CH1 =
        (tcldn_ch1_en_3_0x2 >> TPS2HC10S_I2T_CONFIG_CH1_TCLDN_CH1_OFS);
    HCS_writeRegister(TPS2HC10S_I2T_CONFIG_CH1_REG,
```

```

        exportConfig.i2tConfigCh1.value.word);

/* Waiting for two seconds. At this point we can normally
   yield the tasks if we were in an RTOS, but just waiting for
   an interrupt here. */

DL_TimerA_startCounter(TIMER_0_INST);
while(timerTriggered == false)
{
    __WFI();
}
timerTriggered = false;

/* Setting back to latch mode */
exportConfig.i2tConfigCh1.value.bits.TCLDN_CH1 = 0;
HCS_writeRegister(TPS2HC10S_I2T_CONFIG_CH1_REG,
    exportConfig.i2tConfigCh1.value.word);

/* Re-enabling the channel */
HCS_setSwitchState(1);
}

```

### 4.3 Low-Power Mode Example

The low-power mode example shows how to set the HCS high-side switch into low-power mode and then wake up on a fault event. To use this example, before downloading the code to your microcontroller set a load on channel 1 that consumes less than 800mA of current (what we set the LPM exit current to using [Section 2.4.8](#)). Once the code example has been downloaded, increase the load current to greater than 800mA. This can cause the LPM to exit, the FAULT pin to trigger, and for the microcontroller to interrupt/handle the event. The relevant application code can be seen below:

```

while(1)
{
    /* Putting the device into LPM. 800mA exit current on CH1 */
    HCS_gotoLPM(lpm_exit_curr_ch1_en_2_0x1, lpm_exit_curr_ch2_en_1_0x0);

    /* Wait for the fault line to trigger low on PB3 */
    __WFI();

    /* If we woke up from the interrupt, check to make sure it was a signal
       for an LPM wakeup. The idea here is that the user increases the
       load current somehow to "force the device" from LPM. */
    resCode = HCS_readRegister(TPS2HC10S_FLT_STAT_CH1_REG,
        &currentValue);
    resCode.byte |= HCS_readRegister(TPS2HC10S_FLT_STAT_CH1_REG,
        &currentValue).byte;

    if(currentValue & TPS2HC10S_FLT_STAT_CH1_LPM_WAKE_CH1_MASK)
    {
        /* Set a breakpoint here for demonstration */
        asm ("nop");
    }

    if(resCode.byte != 0)
    {
        handleError(resCode);
    }
}

```

### 4.4 Current Sense Example

The current sense code example shows how the HCS family of smart fuse high-side switches has a scalable and extremely flexible current sense. This code example sets up a 1ms time that periodically wakes up and samples the load current of channel 1 of the high-side switch. If the load current is below 500mA, the device enables the following settings of the high-side switch:

- Input voltage scaling (ISNS\_SCALE\_CHx of DIAG\_CONFIG\_CHx register) is enabled allowing for the ADC input voltage to be scaled by a factor of 8x
- Open load detection enabled (OL\_ON\_EN\_CHx of DIAG\_CONFIG\_CHx) which changes KSNS ratio to lower value (see electrical specs in the data sheet)



A breakpoint line is set at each event to allow the user to break and understand the behavior of the current sense. When the low current sense mode is entered in the software, a state variable (`inLowCurrent`) is set to signify the current status and the device continues to periodically sample the current. If the current level saturates the ADC reading, the low current mode is exited and the normal scaling/KSNS modes are used. A snippet of the relevant code are shown in the following code:

```
while(1)
{
    __WFI();

    /* Reading the load current value. We need to read the register twice
       as the */
    resCode = HCS_readRegister(TPS2HC10S_ADC_RESULT_CH1_I_REG,
                              &currentValue);
    resCode.byte |= HCS_readRegister(TPS2HC10S_ADC_RESULT_CH1_I_REG,
                                     &currentValue).byte;

    /* For each transaction, the high-side switch can return an error
       status code that can report common faults of the device. */
    if(resCode.byte != 0)
    {
        handleError(resCode);
    }

    /* Masking out the relevant bits */
    currentValue &= TPS2HC10S_ADC_RESULT_CH1_I_ADC_RESULT_CH1_I_MASK;

    /* Check to see if we are below the threshold where we want to turn
       on current sense scaling and change the KSNS ratio and enable
       scaling by 8x. This can allow for */
    if((currentValue < LOW_CURRENT_SNS_THRESHOLD) &&
        (inLowCurrent == false))
    {
        exportConfig.diagConfigCh1.value.bits.OL_ON_EN_CH1 = 1;
        exportConfig.diagConfigCh1.value.bits.ISNS_SCALE_CH1 = 1;
        inLowCurrent = true;
        HCS_writeRegister(TPS2HC10S_DIAG_CONFIG_CH1_REG,
                          exportConfig.diagConfigCh1.value.word);

        /* Adding place to set a breakpoint for the sake of demonstration */
        asm ("nop");
    }
    else if((currentValue == LOW_CURRENT_SNS_SATURATION) &&
            (inLowCurrent == true))
    {
        exportConfig.diagConfigCh1.value.bits.OL_ON_EN_CH1 = 0;
        exportConfig.diagConfigCh1.value.bits.ISNS_SCALE_CH1 = 0;
        HCS_writeRegister(TPS2HC10S_DIAG_CONFIG_CH1_REG,
                          exportConfig.diagConfigCh1.value.word);

        /* Adding place to set a breakpoint for the sake of demonstration */
        asm ("nop");
    }
}
```

By being able to detect low current and enable the scaling/KSNS modes, the high-side sense is able to greatly the current sense resolution and meet applications requiring high current sense accuracy.

## 5 Summary

The software drivers and code examples for the HCS family of smart fuse devices provide a versatile range of functions for developing software for automotive smart fuse applications. These drivers can be easily ported to support a variety of different host architectures and the simplistic design of the drivers allows a developer to get up-to-speed with software development for the HCS devices with little backend overhead. Additionally, with the use of the [Smart Fuse Configurator](#) software tool, the user has the ability to seamlessly configure the smart fuse device and tune the drivers to the exact requirement of the end application. These software tools remove barriers for adapting the HCS device family into a smart fuse or zonal application and provide a flexible approach for combining software or hardware development.

## 6 References

- Texas Instruments, [\*TPS2HCS10-Q1 Automotive, dual-channel 10-mΩ smart high-side switch with I<sup>2</sup>T wire protection, low IQ mode and SPI\*](#)
- Texas Instruments, [\*HCS-SMARTFUSE-DRIVERS Simple C drivers and code examples for HCS smart fuse devices\*](#)
- Texas Instruments, [\*HSS-HCMOTHERBRDEVM Smart fuse evaluation module\*](#)
- Texas Instruments, [\*HSS-2HCS10EVM TPS2HCS10-Q1 daughter card for smart fuse high-side switch\*](#)
- Texas Instruments, [\*HSS-SMART-CONFIGURATOR Configuration tool for the HSS-HCMOTHERBRDEVM and TI's smart fuse high-side switches\*](#)
- Texas Instruments, [\*HCS-HEADER-FILES C Header files for smart fuse high-side switches with register definitions\*](#)

## IMPORTANT NOTICE AND DISCLAIMER

TI PROVIDES TECHNICAL AND RELIABILITY DATA (INCLUDING DATA SHEETS), DESIGN RESOURCES (INCLUDING REFERENCE DESIGNS), APPLICATION OR OTHER DESIGN ADVICE, WEB TOOLS, SAFETY INFORMATION, AND OTHER RESOURCES "AS IS" AND WITH ALL FAULTS, AND DISCLAIMS ALL WARRANTIES, EXPRESS AND IMPLIED, INCLUDING WITHOUT LIMITATION ANY IMPLIED WARRANTIES OF MERCHANTABILITY, FITNESS FOR A PARTICULAR PURPOSE OR NON-INFRINGEMENT OF THIRD PARTY INTELLECTUAL PROPERTY RIGHTS.

These resources are intended for skilled developers designing with TI products. You are solely responsible for (1) selecting the appropriate TI products for your application, (2) designing, validating and testing your application, and (3) ensuring your application meets applicable standards, and any other safety, security, regulatory or other requirements.

These resources are subject to change without notice. TI grants you permission to use these resources only for development of an application that uses the TI products described in the resource. Other reproduction and display of these resources is prohibited. No license is granted to any other TI intellectual property right or to any third party intellectual property right. TI disclaims responsibility for, and you will fully indemnify TI and its representatives against, any claims, damages, costs, losses, and liabilities arising out of your use of these resources.

TI's products are provided subject to [TI's Terms of Sale](#) or other applicable terms available either on [ti.com](#) or provided in conjunction with such TI products. TI's provision of these resources does not expand or otherwise alter TI's applicable warranties or warranty disclaimers for TI products.

TI objects to and rejects any additional or different terms you may have proposed.

Mailing Address: Texas Instruments, Post Office Box 655303, Dallas, Texas 75265  
Copyright © 2024, Texas Instruments Incorporated