

TSW2200EVM: Multi-Output Power Supply Evaluation Module

The TSW2200EVM evaluation module (EVM) provides a multiple output power supply solution for powering other EVMs. This EVM provides fixed and adjustable supplies that can be used as simple on or off supplies or sequenced supplies for power critical EVM setups. This user's guide discusses options available when using the EVM.

Contents

1	Hardware Configuration	2
1.1	Input Power Source	2
1.2	Output Power Regulators	2
1.3	Switches, Jumpers, and LEDs	3
2	Software Configuration	3
2.1	Preprogrammed Configurations	4
2.2	Delay Settings	4
2.3	Pin Assignment Settings	5
2.4	Voltage Monitoring	7
3	Turnon Sequencing Example	7
3.1	Hardware Setup	8
3.2	Software Setup	9
4	Reference	10

List of Figures

1	TSW2200EVM Evaluation Module.....	2
2	Preprogrammed Delays in Flash Memory	4
3	Pin Assignments For Supplies, Enables, and Monitoring.....	5
4	Enable Polarity and Output Mode Type.....	6
5	Voltage Monitoring Readouts For Each Output Voltage Rail	7
6	5V and 3.3V Rails With 20ms Delay	9
7	5V and 3.3V Rails With 20ms Delay Capture	10

List of Tables

1	Jumper Settings For Power Output Rails	3
2	LED Indication For Power.....	3
3	Enable Polarity Modes For Desired Turnon or Turnoff Conditions	6

1 Hardware Configuration

The TSW2200EVM (Figure 1) provides users with a multiple-output power supply board using a switching regulator and low-dropout (LDO) regulators. With an onboard TUSB3210 integrated circuit (IC) and UCD90120A sequencer, users can configure the EVM to operate in either manual or sequencer mode. Manual operation allows each output to be turned on or off with a jumper setting, whereas the sequencer operation allows precise configurability of turn-on time using the Fusion GUI software.

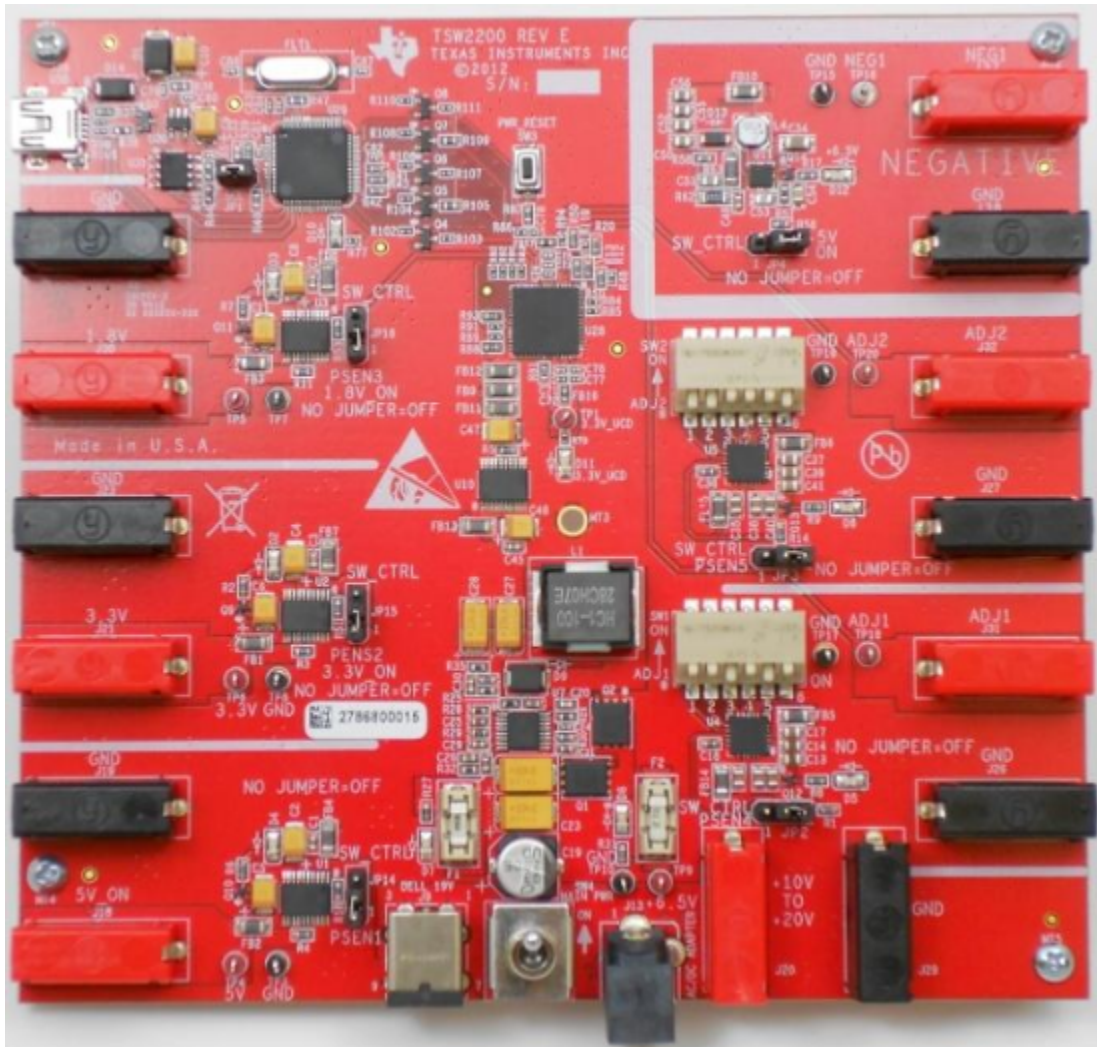


Figure 1. TSW2200EVM Evaluation Module

1.1 Input Power Source

The input supply for the TSW2200 can be a voltage of 10 V to 20 V using banana jacks, a 19-V Dell™ laptop charger, or a 12 V @ 2 A (AC-to-DC) power module. These input voltages are stepped down to 6.5 V using a switching regulator.

1.2 Output Power Regulators

The available power rails are four fixed supplies at 5 V, 3.3 V, 1.8 V and a negative rail of -5 V. Two positive adjustable output regulators are also present supplying voltages from 1.4 V to 6.4 V. All output supplies except for the -5 V output regulator are rated for 0.36 A.

1.3 Switches, Jumpers, and LEDs

SW4 controls the main power switch supplying input power to the EVM. After SW4 is enabled, each separate output supply is turned on and off using individual jumpers. [Table 1](#) shows the jumper configurations for each supply. Manually enable or disable the supply, depending on the jumper location. Another option programs the supply with the UCD90120A sequencer. In this mode the UCD90120A is programmed with the Fusion GUI software. This software controls the turnon times of each supply as well as monitoring overvoltage and undervoltage conditions.

Table 1. Jumper Settings For Power Output Rails

Output Supplies	Jumper Setting: Manual ON	Jumper Setting: Manual OFF	Jumper Setting: Sequencer Control
5 V	1-2	Remove jumper	2-3
3.3 V	1-2	Remove jumper	2-3
1.8 V	1-2	Remove jumper	2-3
from 1.4 V to 6.4 V	2-3	Remove jumper	1-2
from 1.4 V to 6.4 V	2-3	Remove jumper	1-2
-5 V	2-3	Remove jumper	1-2

The LED indication displays which input and output power is enabled or disabled. [Table 2](#) shows which LEDs correspond to specific supplies onboard.

Table 2. LED Indication For Power

Supply	LED
5-V output	D4
3.3-V output	D2
1.8-V output	D3
from 1.4 V to 6.4 V	D5
from 1.4 V to 6.4 V	D6
-5V output	D12
Input power	D7 and D8
UCD90120A input	D11
TUSB3210 input	D10

2 Software Configuration

The Fusion Digital Power Designer software controls the turnon and turnoff of the TSW2200 in sequencer mode. Download the Fusion software from the [Digital Power Software](#) page on the TI Web site. This software allows configuration of enable control for turning on and turning off the output supplies at specific time delays. Also available with the Fusion GUI is voltage monitoring of the output. Voltage monitoring reads out conditions of overvoltage, undervoltage, current, and temperature. The following steps demonstrate the set up of the Fusion GUI software.

2.1 Preprogrammed Configurations

Sequencing is provided by the UCD90120A, included on the EVM. Observe the sequencing capabilities of the board by setting the supplies to SW_CTRL (settings in Sequencer control column of Table 1), a preloaded delay for each supply occurs when the board is powered on. This delay is seen when powering on by the sequence of LEDs turning on for their respective supplies. The button highlighted in Figure 2 preprograms this delay into the UCD90120A's flash memory, loading a configuration after the board is shut off.

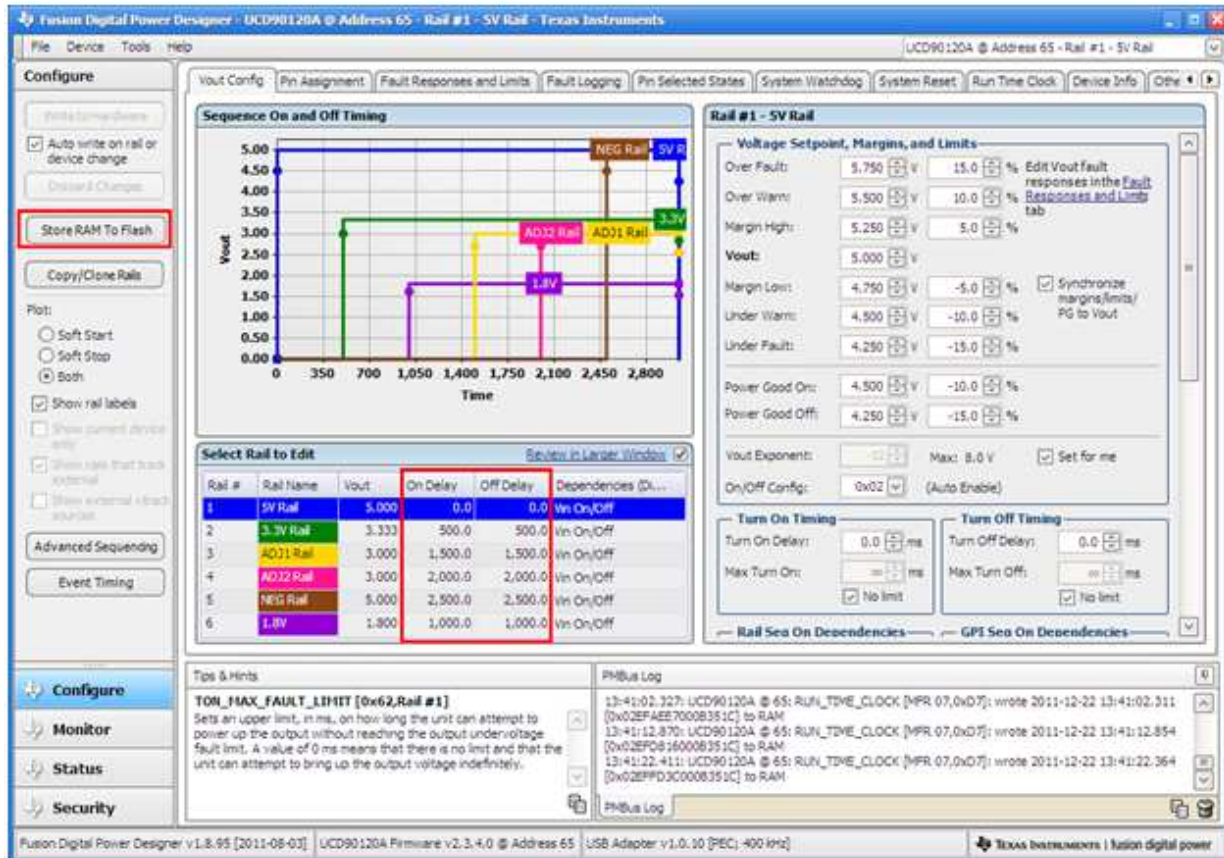


Figure 2. Preprogrammed Delays in Flash Memory

2.2 Delay Settings

Figure 2 highlights the location where the turnon and turnoff delay for each supply is set. Edit the supply value in the *Select Rail to Edit* area for configuration of each rail's delays independently.

2.3 Pin Assignment Settings

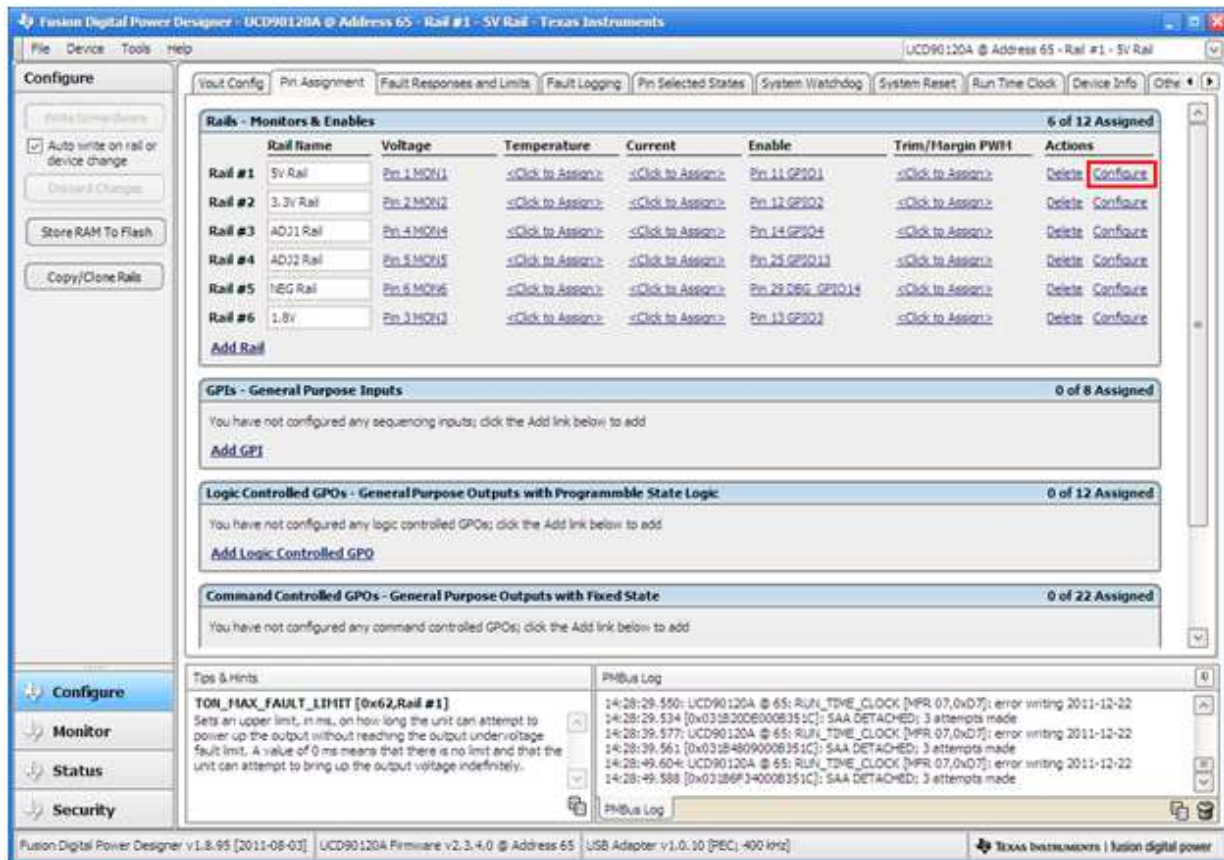


Figure 3. Pin Assignments For Supplies, Enables, and Monitoring

Different configurations are possible with the TSW2200, notably changing the enable settings so the EVM powers up with all supplies off or all supplies on. Configuration of active-low or active-high enable settings for each supply as well as the pin assignments for monitoring and enabling are shown in the pin assignment screen, [Figure 3](#).

Pin assignments are made for the rail name using the pin monitors, as seen in the Voltage column in [Figure 3](#). These are preset and must not be changed as this is a permanent pin configuration in the hardware. Because the negative regulator's output is -5 V , the monitor pins of the UCD90120A cannot support a voltage outside the range of 0 V to 2.5 V . In order to eliminate an extra inverter for purposes of converting the -5 V to the required monitor voltage range, no monitoring is provided for the -5 V supply.

The enables are also preset in the hardware and must not be changed from the settings shown in [Figure 3](#). All supplies have an enable pin connected and used so that all the supplies can be sequenced. The last customizable pin assignment configuration is under the Configure link highlighted in [Figure 3](#). When selecting *Configure*, the screen shown in [Figure 4](#) appears and allows options for an active-low or active-high enable polarity as well as two types of output mode configurations. The output mode configuration is always actively driven.

Users can set the enable polarity, however, in two configurations, depending on the desired result for the supplies during board power up. Table 3 shows the two configurations available for each supply setting. Mode 1 sets all enable polarities to their appropriate state for turnon. This means that when set in Mode 1, all supplies begin to turn on in the configured sequence as soon as the board is powered up. When *Store RAM to flash* is also pushed when setting in mode 1, the board does not need the USB cable connected or have the Fusion GUI software running, the sequencing simply occurs when the board is powered up or when the PWR_RESET SW3 is pushed. Note that when sequencing the supplies, do not turn the board on using the main switch to sequence because transient voltage spikes result from the main supply turning on everything for a short time before the UCD90120A takes control. Sequencing from mode 1, the board powers up in a sequence, then the user can press and hold the SW3 button while all connections are made to the output, and when the button is released, the power comes on in sequence.

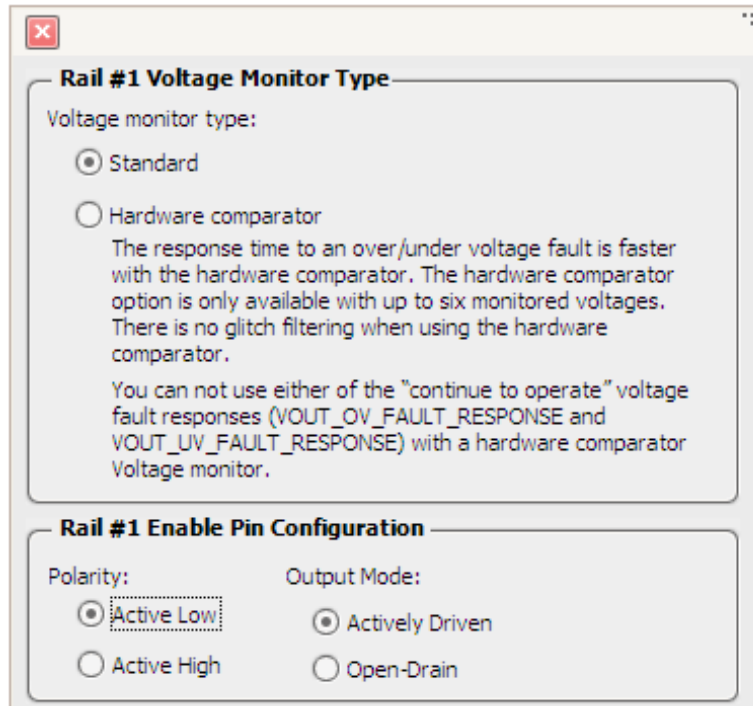


Figure 4. Enable Polarity and Output Mode Type

Table 3. Enable Polarity Modes For Desired Turnon or Turnoff Conditions

Output Supplies	Mode 1 – Enable Polarities	Mode 2 – Enable Polarities
5 V	Active low	Active high
3.3 V	Active low	Active high
1.8 V	Active low	Active high
ADJ1	Active high	Active low
ADJ2	Active high	Active low
NEG	Active high	Active low

Table 3 shows the second mode possible for each supply. Mode 2 sets the supplies to the enable polarity keeping supplies off when the board powers on. In this mode, the Fusion GUI software and a USB cable connected to the board are required. When operating in this mode and once all the desired delay settings are set, a write to the hardware is possible. This write to hardware is in real time and sets all supplies to the appropriate delays. Once the configuration for turnon is set, then all enable polarities for each supply

under Configure in Figure 3 are changed to Mode 1 settings. Another write to hardware is done, and then all supplies are sequenced without turning the board off and on. When all boards need to be sequenced off by a specified delay setting, then all enable polarities can be reset to Mode 2 and a write to the hardware can be repeated. This then sequences all supplies off, based on the specified time for each supply.

2.4 Voltage Monitoring

The last Fusion GUI readout beneficial for maintaining correct output voltage levels is the voltage monitoring function. This portion of the software allows real-time voltage monitoring of each output voltage rail. In Figure 5, the output voltage readings appear in the top left. Each voltage reads out the correct output voltage of each supply. The monitoring is preprogrammed based on the hardware and software specifications. The voltage reading for Vout #6 – NEG Rail is not valid because the monitor pin was not connected for this rail. This is because the output of the negative regulator is -5 V and cannot be divided appropriately to a voltage within the 0V to 2.5V requirement.

When monitoring voltage it is important whether the voltage exhibits undervoltage or overvoltage conditions. Measure this data within the Status Registers/Lines box or the graphical readout for the respective output voltage to the right of the Readings box. These two boxes indicate if the output voltage is OK, as well as what condition the voltage is in with respect to the overvoltage and undervoltage limit conditions. This data ensures the power supply board is operating correctly.

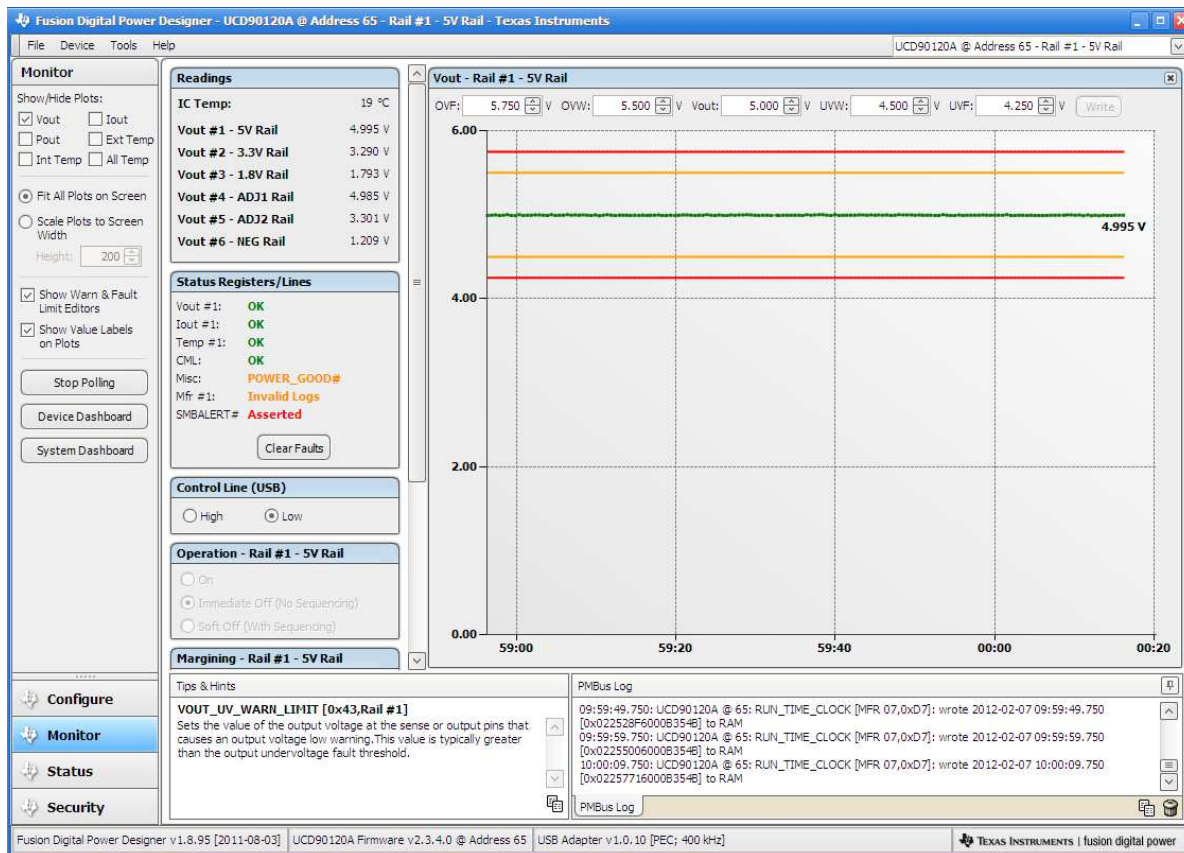


Figure 5. Voltage Monitoring Readouts For Each Output Voltage Rail

3 Turnon Sequencing Example

To verify the sequencing of two of the supplies turning on, perform the following steps for setting up the TSW2200 and the Fusion GUI software. For this setup, the 5V rail does not have a turn on delay, whereas the 3.3V rail has a 20ms delay.

3.1 Hardware Setup

Prepare the TSW2200 for software programming with the following steps:

1. Plug in the input power as described in [Section 1.1](#).
2. Connect the TSW2200 to the computer with a USB cable.
3. Turn on the EVM with SW4. Do not connect the output voltages to the loads.

3.2 Software Setup

Configure the sequencer delay settings with the following steps:

1. Start the Fusion GUI software.
2. Configure the delay settings for the 5V and 3.3V rails as shown in [Figure 6](#).
3. Set the enable polarities as listed in Mode 2 from [Table 3](#) (accessible in Configure menu as shown in [Figure 3](#)).
4. Click *Write to Hardware* (all rails must be turned off; verify by appropriate LEDs in [Table 2](#) being off).
5. Change jumpers for all other rails, besides 5 V and 3.3 V, to the settings in [Table 1](#) under Manual OFF.
6. Connect a scope probe to the 5V rail and another to the 3.3V rail.
7. Change the enable polarities to the settings listed for Mode 1 from [Table 3](#).
8. Click *Write to Hardware* (5V and 3.3V rails turn on; verify by LEDs).
9. [Figure 7](#) shows the oscilloscope capture of the 5V and 3.3V rails sequencing with a delay of 10 ms.

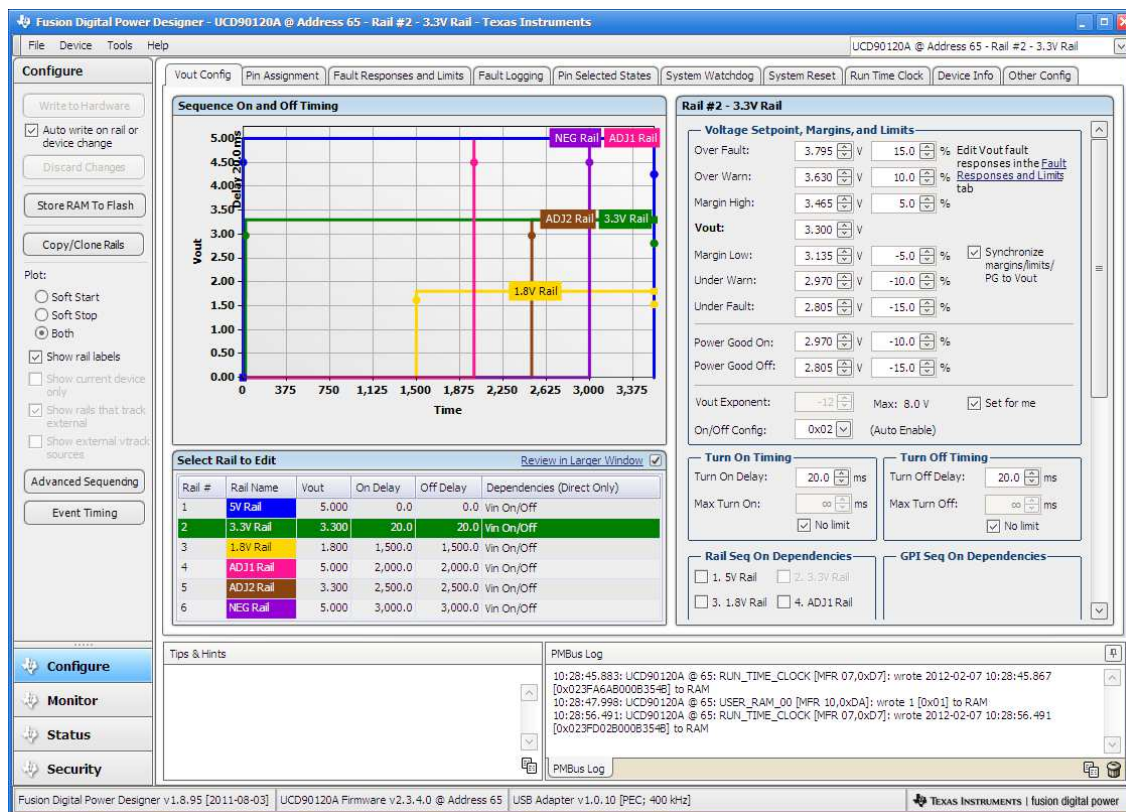


Figure 6. 5V and 3.3V Rails With 20ms Delay

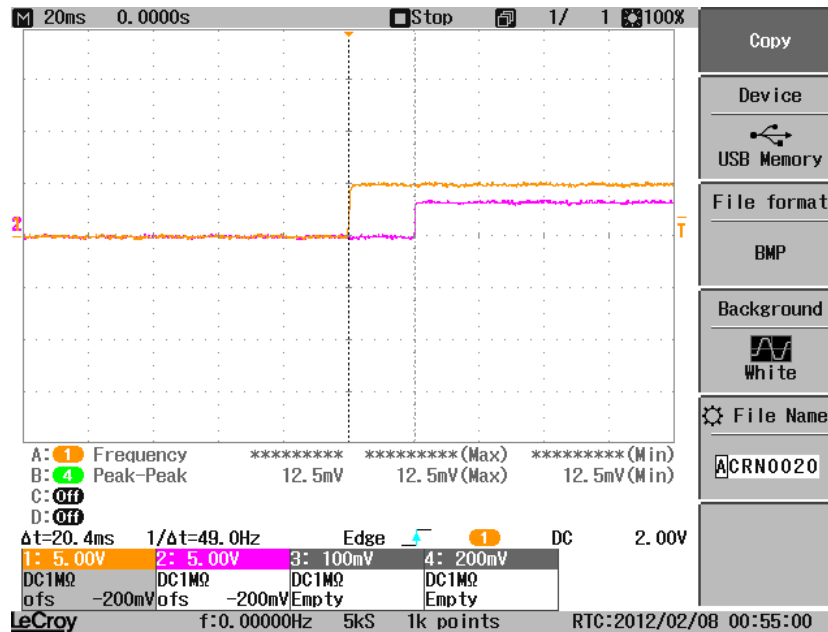


Figure 7. 5V and 3.3V Rails With 20ms Delay Capture

4 Reference

For more information on Fusion GUI software functionality, refer to the supplementary [Fusion Tools Documentation](#).

EVALUATION BOARD/KIT/MODULE (EVM) ADDITIONAL TERMS

Texas Instruments (TI) provides the enclosed Evaluation Board/Kit/Module (EVM) under the following conditions:

The user assumes all responsibility and liability for proper and safe handling of the goods. Further, the user indemnifies TI from all claims arising from the handling or use of the goods.

Should this evaluation board/kit not meet the specifications indicated in the User's Guide, the board/kit may be returned within 30 days from the date of delivery for a full refund. THE FOREGOING LIMITED WARRANTY IS THE EXCLUSIVE WARRANTY MADE BY SELLER TO BUYER AND IS IN LIEU OF ALL OTHER WARRANTIES, EXPRESSED, IMPLIED, OR STATUTORY, INCLUDING ANY WARRANTY OF MERCHANTABILITY OR FITNESS FOR ANY PARTICULAR PURPOSE. EXCEPT TO THE EXTENT OF THE INDEMNITY SET FORTH ABOVE, NEITHER PARTY SHALL BE LIABLE TO THE OTHER FOR ANY INDIRECT, SPECIAL, INCIDENTAL, OR CONSEQUENTIAL DAMAGES.

Please read the User's Guide and, specifically, the Warnings and Restrictions notice in the User's Guide prior to handling the product. This notice contains important safety information about temperatures and voltages. For additional information on TI's environmental and/or safety programs, please visit www.ti.com/esh or contact TI.

No license is granted under any patent right or other intellectual property right of TI covering or relating to any machine, process, or combination in which such TI products or services might be or are used. TI currently deals with a variety of customers for products, and therefore our arrangement with the user is not exclusive. TI assumes no liability for applications assistance, customer product design, software performance, or infringement of patents or services described herein.

REGULATORY COMPLIANCE INFORMATION

As noted in the EVM User's Guide and/or EVM itself, this EVM and/or accompanying hardware may or may not be subject to the Federal Communications Commission (FCC) and Industry Canada (IC) rules.

For EVMs **not** subject to the above rules, this evaluation board/kit/module is intended for use for ENGINEERING DEVELOPMENT, DEMONSTRATION OR EVALUATION PURPOSES ONLY and is not considered by TI to be a finished end product fit for general consumer use. It generates, uses, and can radiate radio frequency energy and has not been tested for compliance with the limits of computing devices pursuant to part 15 of FCC or ICES-003 rules, which are designed to provide reasonable protection against radio frequency interference. Operation of the equipment may cause interference with radio communications, in which case the user at his own expense will be required to take whatever measures may be required to correct this interference.

General Statement for EVMs including a radio

User Power/Frequency Use Obligations: This radio is intended for development/professional use only in legally allocated frequency and power limits. Any use of radio frequencies and/or power availability of this EVM and its development application(s) must comply with local laws governing radio spectrum allocation and power limits for this evaluation module. It is the user's sole responsibility to only operate this radio in legally acceptable frequency space and within legally mandated power limitations. Any exceptions to this are strictly prohibited and unauthorized by Texas Instruments unless user has obtained appropriate experimental/development licenses from local regulatory authorities, which is responsibility of user including its acceptable authorization.

For EVMs annotated as FCC – FEDERAL COMMUNICATIONS COMMISSION Part 15 Compliant

Caution

This device complies with part 15 of the FCC Rules. Operation is subject to the following two conditions: (1) This device may not cause harmful interference, and (2) this device must accept any interference received, including interference that may cause undesired operation.

Changes or modifications not expressly approved by the party responsible for compliance could void the user's authority to operate the equipment.

FCC Interference Statement for Class A EVM devices

This equipment has been tested and found to comply with the limits for a Class A digital device, pursuant to part 15 of the FCC Rules. These limits are designed to provide reasonable protection against harmful interference when the equipment is operated in a commercial environment. This equipment generates, uses, and can radiate radio frequency energy and, if not installed and used in accordance with the instruction manual, may cause harmful interference to radio communications. Operation of this equipment in a residential area is likely to cause harmful interference in which case the user will be required to correct the interference at his own expense.

FCC Interference Statement for Class B EVM devices

This equipment has been tested and found to comply with the limits for a Class B digital device, pursuant to part 15 of the FCC Rules. These limits are designed to provide reasonable protection against harmful interference in a residential installation. This equipment generates, uses and can radiate radio frequency energy and, if not installed and used in accordance with the instructions, may cause harmful interference to radio communications. However, there is no guarantee that interference will not occur in a particular installation. If this equipment does cause harmful interference to radio or television reception, which can be determined by turning the equipment off and on, the user is encouraged to try to correct the interference by one or more of the following measures:

- Reorient or relocate the receiving antenna.
- Increase the separation between the equipment and receiver.
- Connect the equipment into an outlet on a circuit different from that to which the receiver is connected.
- Consult the dealer or an experienced radio/TV technician for help.

For EVMs annotated as IC – INDUSTRY CANADA Compliant

This Class A or B digital apparatus complies with Canadian ICES-003.

Changes or modifications not expressly approved by the party responsible for compliance could void the user's authority to operate the equipment.

Concerning EVMs including radio transmitters

This device complies with Industry Canada licence-exempt RSS standard(s). Operation is subject to the following two conditions: (1) this device may not cause interference, and (2) this device must accept any interference, including interference that may cause undesired operation of the device.

Concerning EVMs including detachable antennas

Under Industry Canada regulations, this radio transmitter may only operate using an antenna of a type and maximum (or lesser) gain approved for the transmitter by Industry Canada. To reduce potential radio interference to other users, the antenna type and its gain should be so chosen that the equivalent isotropically radiated power (e.i.r.p.) is not more than that necessary for successful communication.

This radio transmitter has been approved by Industry Canada to operate with the antenna types listed in the user guide with the maximum permissible gain and required antenna impedance for each antenna type indicated. Antenna types not included in this list, having a gain greater than the maximum gain indicated for that type, are strictly prohibited for use with this device.

Cet appareil numérique de la classe A ou B est conforme à la norme NMB-003 du Canada.

Les changements ou les modifications pas expressément approuvés par la partie responsable de la conformité ont pu vider l'autorité de l'utilisateur pour actionner l'équipement.

Concernant les EVMs avec appareils radio

Le présent appareil est conforme aux CNR d'Industrie Canada applicables aux appareils radio exempts de licence. L'exploitation est autorisée aux deux conditions suivantes : (1) l'appareil ne doit pas produire de brouillage, et (2) l'utilisateur de l'appareil doit accepter tout brouillage radioélectrique subi, même si le brouillage est susceptible d'en compromettre le fonctionnement.

Concernant les EVMs avec antennes détachables

Conformément à la réglementation d'Industrie Canada, le présent émetteur radio peut fonctionner avec une antenne d'un type et d'un gain maximal (ou inférieur) approuvé pour l'émetteur par Industrie Canada. Dans le but de réduire les risques de brouillage radioélectrique à l'intention des autres utilisateurs, il faut choisir le type d'antenne et son gain de sorte que la puissance isotrope rayonnée équivalente (p.i.r.e.) ne dépasse pas l'intensité nécessaire à l'établissement d'une communication satisfaisante.

Le présent émetteur radio a été approuvé par Industrie Canada pour fonctionner avec les types d'antenne énumérés dans le manuel d'usage et ayant un gain admissible maximal et l'impédance requise pour chaque type d'antenne. Les types d'antenne non inclus dans cette liste, ou dont le gain est supérieur au gain maximal indiqué, sont strictement interdits pour l'exploitation de l'émetteur.

【Important Notice for Users of this Product in Japan】

This development kit is NOT certified as Confirming to Technical Regulations of Radio Law of Japan

If you use this product in Japan, you are required by Radio Law of Japan to follow the instructions below with respect to this product:

1. Use this product in a shielded room or any other test facility as defined in the notification #173 issued by Ministry of Internal Affairs and Communications on March 28, 2006, based on Sub-section 1.1 of Article 6 of the Ministry's Rule for Enforcement of Radio Law of Japan,
2. Use this product only after you obtained the license of Test Radio Station as provided in Radio Law of Japan with respect to this product, or
3. Use of this product only after you obtained the Technical Regulations Conformity Certification as provided in Radio Law of Japan with respect to this product. Also, please do not transfer this product, unless you give the same notice above to the transferee. Please note that if you could not follow the instructions above, you will be subject to penalties of Radio Law of Japan.

Texas Instruments Japan Limited
(address) 24-1, Nishi-Shinjuku 6 chome, Shinjuku-ku, Tokyo, Japan

<http://www.tij.co.jp>

【ご使用にあたっての注】

本開発キットは技術基準適合証明を受けておりません。

本製品のご使用に際しては、電波法遵守のため、以下のいずれかの措置を取っていただく必要がありますのでご注意ください。

1. 電波法施行規則第6条第1項第1号に基づく平成18年3月28日総務省告示第173号で定められた電波暗室等の試験設備でご使用いただく。
2. 実験局の免許を取得後ご使用いただく。
3. 技術基準適合証明を取得後ご使用いただく。

なお、本製品は、上記の「ご使用にあたっての注意」を譲渡先、移転先に通知しない限り、譲渡、移転できないものとします。

上記を遵守頂けない場合は、電波法の罰則が適用される可能性があることをご留意ください。

日本テキサス・インスツルメンツ株式会社
東京都新宿区西新宿6丁目24番1号
西新宿三井ビル

<http://www.tij.co.jp>

EVALUATION BOARD/KIT/MODULE (EVM) WARNINGS, RESTRICTIONS AND DISCLAIMERS

For Feasibility Evaluation Only, in Laboratory/Development Environments. Unless otherwise indicated, this EVM is not a finished electrical equipment and not intended for consumer use. It is intended solely for use for preliminary feasibility evaluation in laboratory/development environments by technically qualified electronics experts who are familiar with the dangers and application risks associated with handling electrical mechanical components, systems and subsystems. It should not be used as all or part of a finished end product.

Your Sole Responsibility and Risk. You acknowledge, represent and agree that:

1. You have unique knowledge concerning Federal, State and local regulatory requirements (including but not limited to Food and Drug Administration regulations, if applicable) which relate to your products and which relate to your use (and/or that of your employees, affiliates, contractors or designees) of the EVM for evaluation, testing and other purposes.
2. You have full and exclusive responsibility to assure the safety and compliance of your products with all such laws and other applicable regulatory requirements, and also to assure the safety of any activities to be conducted by you and/or your employees, affiliates, contractors or designees, using the EVM. Further, you are responsible to assure that any interfaces (electronic and/or mechanical) between the EVM and any human body are designed with suitable isolation and means to safely limit accessible leakage currents to minimize the risk of electrical shock hazard.
3. You will employ reasonable safeguards to ensure that your use of the EVM will not result in any property damage, injury or death, even if the EVM should fail to perform as described or expected.
4. You will take care of proper disposal and recycling of the EVM's electronic components and packing materials.

Certain Instructions. It is important to operate this EVM within TI's recommended specifications and environmental considerations per the user guidelines. Exceeding the specified EVM ratings (including but not limited to input and output voltage, current, power, and environmental ranges) may cause property damage, personal injury or death. If there are questions concerning these ratings please contact a TI field representative prior to connecting interface electronics including input power and intended loads. Any loads applied outside of the specified output range may result in unintended and/or inaccurate operation and/or possible permanent damage to the EVM and/or interface electronics. Please consult the EVM User's Guide prior to connecting any load to the EVM output. If there is uncertainty as to the load specification, please contact a TI field representative. During normal operation, some circuit components may have case temperatures greater than 60°C as long as the input and output are maintained at a normal ambient operating temperature. These components include but are not limited to linear regulators, switching transistors, pass transistors, and current sense resistors which can be identified using the EVM schematic located in the EVM User's Guide. When placing measurement probes near these devices during normal operation, please be aware that these devices may be very warm to the touch. As with all electronic evaluation tools, only qualified personnel knowledgeable in electronic measurement and diagnostics normally found in development environments should use these EVMs.

Agreement to Defend, Indemnify and Hold Harmless. You agree to defend, indemnify and hold TI, its licensors and their representatives harmless from and against any and all claims, damages, losses, expenses, costs and liabilities (collectively, "Claims") arising out of or in connection with any use of the EVM that is not in accordance with the terms of the agreement. This obligation shall apply whether Claims arise under law of tort or contract or any other legal theory, and even if the EVM fails to perform as described or expected.

Safety-Critical or Life-Critical Applications. If you intend to evaluate the components for possible use in safety critical applications (such as life support) where a failure of the TI product would reasonably be expected to cause severe personal injury or death, such as devices which are classified as FDA Class III or similar classification, then you must specifically notify TI of such intent and enter into a separate Assurance and Indemnity Agreement.

Mailing Address: Texas Instruments, Post Office Box 655303, Dallas, Texas 75265
Copyright © 2012, Texas Instruments Incorporated

IMPORTANT NOTICE

Texas Instruments Incorporated and its subsidiaries (TI) reserve the right to make corrections, enhancements, improvements and other changes to its semiconductor products and services per JESD46, latest issue, and to discontinue any product or service per JESD48, latest issue. Buyers should obtain the latest relevant information before placing orders and should verify that such information is current and complete. All semiconductor products (also referred to herein as "components") are sold subject to TI's terms and conditions of sale supplied at the time of order acknowledgment.

TI warrants performance of its components to the specifications applicable at the time of sale, in accordance with the warranty in TI's terms and conditions of sale of semiconductor products. Testing and other quality control techniques are used to the extent TI deems necessary to support this warranty. Except where mandated by applicable law, testing of all parameters of each component is not necessarily performed.

TI assumes no liability for applications assistance or the design of Buyers' products. Buyers are responsible for their products and applications using TI components. To minimize the risks associated with Buyers' products and applications, Buyers should provide adequate design and operating safeguards.

TI does not warrant or represent that any license, either express or implied, is granted under any patent right, copyright, mask work right, or other intellectual property right relating to any combination, machine, or process in which TI components or services are used. Information published by TI regarding third-party products or services does not constitute a license to use such products or services or a warranty or endorsement thereof. Use of such information may require a license from a third party under the patents or other intellectual property of the third party, or a license from TI under the patents or other intellectual property of TI.

Reproduction of significant portions of TI information in TI data books or data sheets is permissible only if reproduction is without alteration and is accompanied by all associated warranties, conditions, limitations, and notices. TI is not responsible or liable for such altered documentation. Information of third parties may be subject to additional restrictions.

Resale of TI components or services with statements different from or beyond the parameters stated by TI for that component or service voids all express and any implied warranties for the associated TI component or service and is an unfair and deceptive business practice. TI is not responsible or liable for any such statements.

Buyer acknowledges and agrees that it is solely responsible for compliance with all legal, regulatory and safety-related requirements concerning its products, and any use of TI components in its applications, notwithstanding any applications-related information or support that may be provided by TI. Buyer represents and agrees that it has all the necessary expertise to create and implement safeguards which anticipate dangerous consequences of failures, monitor failures and their consequences, lessen the likelihood of failures that might cause harm and take appropriate remedial actions. Buyer will fully indemnify TI and its representatives against any damages arising out of the use of any TI components in safety-critical applications.

In some cases, TI components may be promoted specifically to facilitate safety-related applications. With such components, TI's goal is to help enable customers to design and create their own end-product solutions that meet applicable functional safety standards and requirements. Nonetheless, such components are subject to these terms.

No TI components are authorized for use in FDA Class III (or similar life-critical medical equipment) unless authorized officers of the parties have executed a special agreement specifically governing such use.

Only those TI components which TI has specifically designated as military grade or "enhanced plastic" are designed and intended for use in military/aerospace applications or environments. Buyer acknowledges and agrees that any military or aerospace use of TI components which have **not** been so designated is solely at the Buyer's risk, and that Buyer is solely responsible for compliance with all legal and regulatory requirements in connection with such use.

TI has specifically designated certain components as meeting ISO/TS16949 requirements, mainly for automotive use. In any case of use of non-designated products, TI will not be responsible for any failure to meet ISO/TS16949.

Products

Audio	www.ti.com/audio
Amplifiers	amplifier.ti.com
Data Converters	dataconverter.ti.com
DLP® Products	www.dlp.com
DSP	dsp.ti.com
Clocks and Timers	www.ti.com/clocks
Interface	interface.ti.com
Logic	logic.ti.com
Power Mgmt	power.ti.com
Microcontrollers	microcontroller.ti.com
RFID	www.ti-rfid.com
OMAP Applications Processors	www.ti.com/omap
Wireless Connectivity	www.ti.com/wirelessconnectivity

Applications

Automotive and Transportation	www.ti.com/automotive
Communications and Telecom	www.ti.com/communications
Computers and Peripherals	www.ti.com/computers
Consumer Electronics	www.ti.com/consumer-apps
Energy and Lighting	www.ti.com/energy
Industrial	www.ti.com/industrial
Medical	www.ti.com/medical
Security	www.ti.com/security
Space, Avionics and Defense	www.ti.com/space-avionics-defense
Video and Imaging	www.ti.com/video

TI E2E Community

e2e.ti.com