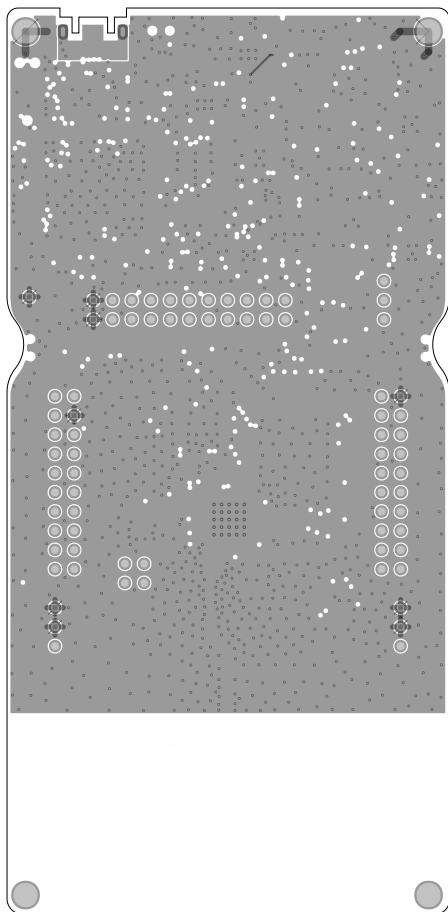
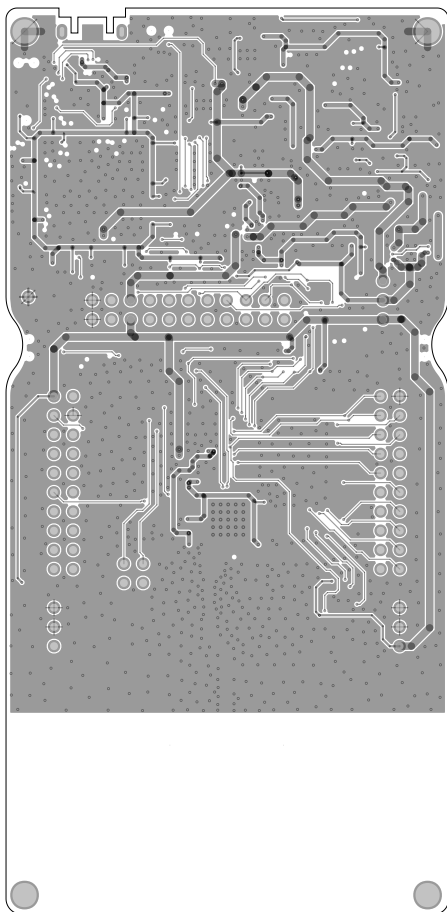


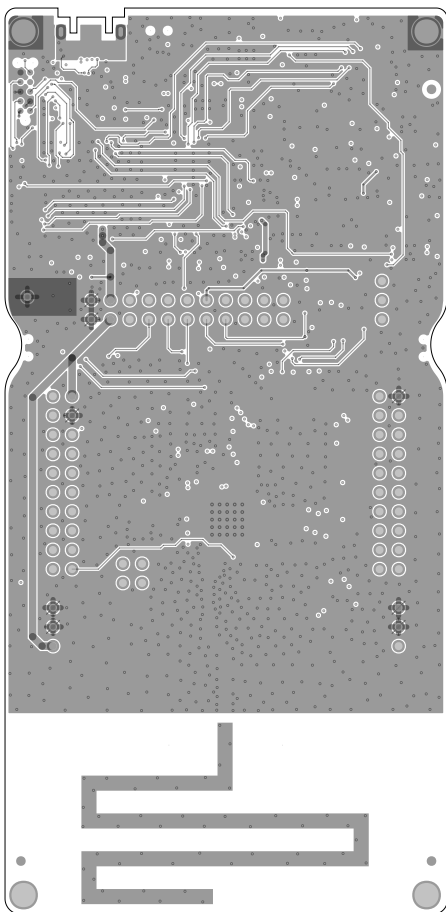
	TEXAS INSTRUMENTS	
	L1	LAUNCHXL-CC1312R1 D WCS042 D
	DATE: 2018-10-10	



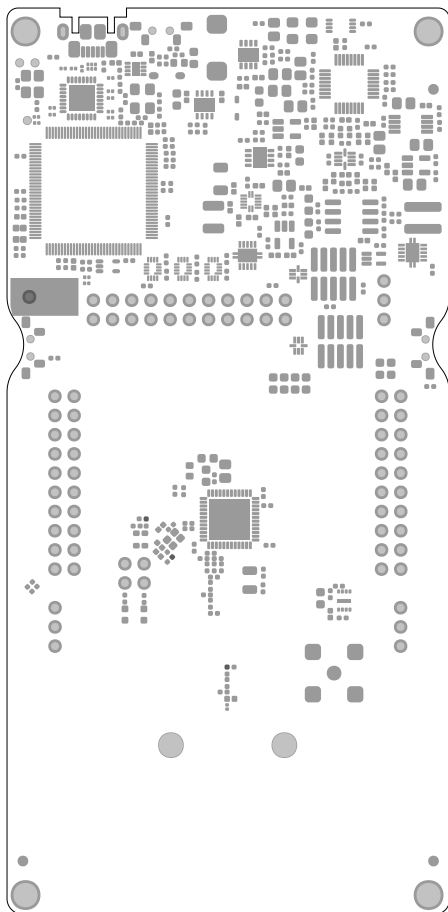
	TEXAS INSTRUMENTS	
	L2	LAUNCHXL-CC1312R1 D WCS042 D
	DATE: 2018-10-10	



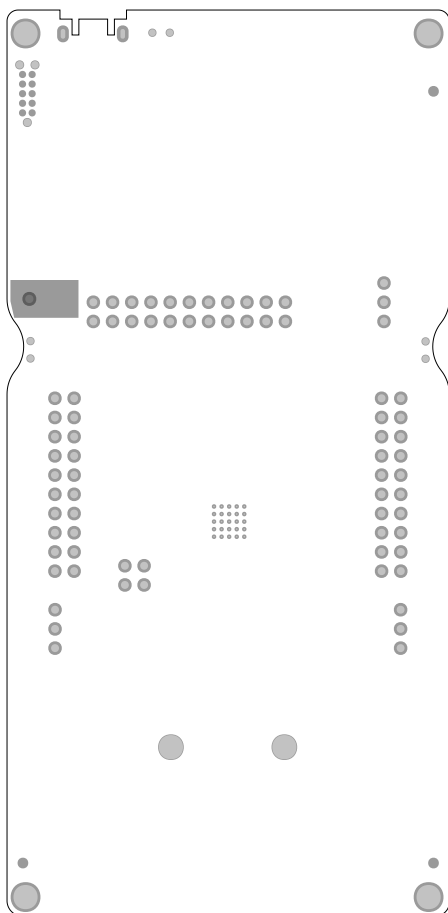
	TEXAS INSTRUMENTS	
	L3	LAUNCHXL-CC1312R1 D WCS042 D
	DATE: 2018-10-10	



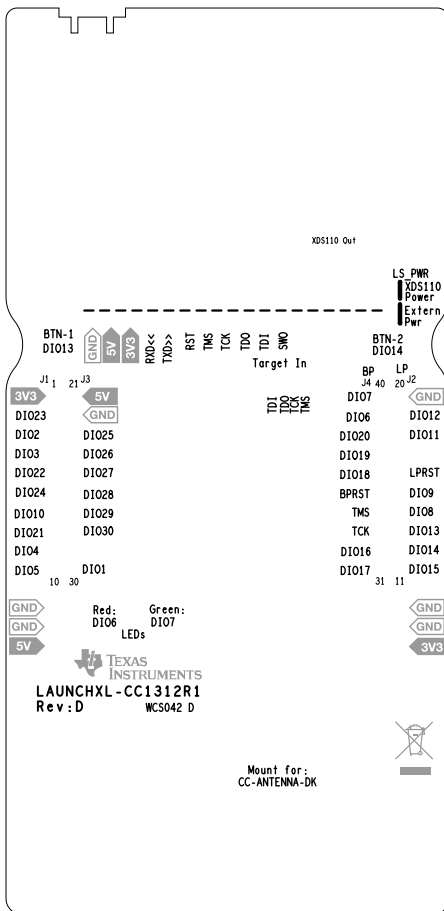
	TEXAS INSTRUMENTS	
	L4	LAUNCHXL-CC1312R1 D WCS042 D
	DATE: 2018-10-10	



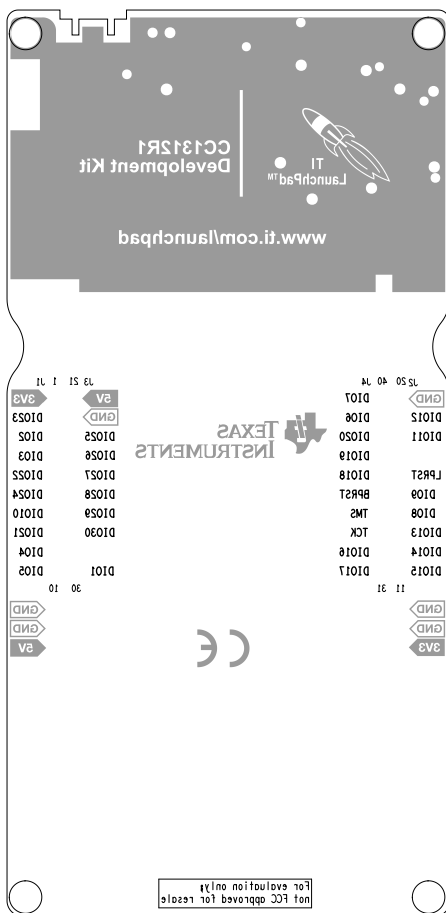
	TEXAS INSTRUMENTS	
	SM TOP	LAUNCHXL-CC1312R1 D WCS042 D
	DATE: 2018-10-10	



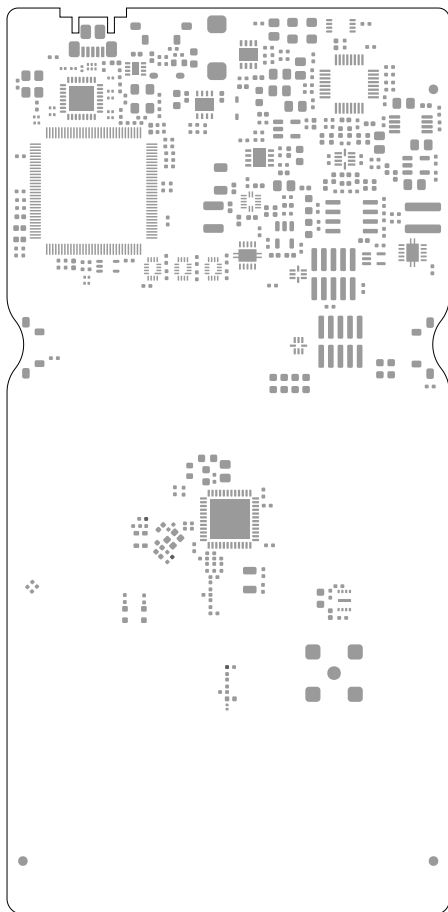
	TEXAS INSTRUMENTS	
	SM BOT	LAUNCHXL-CC1312R1 D WCS042 D
	DATE: 2018-10-10	



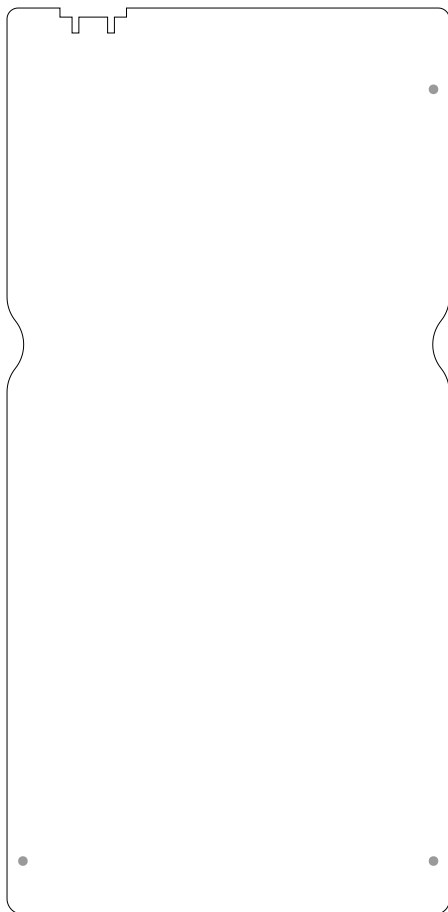
	TEXAS INSTRUMENTS	
	SILKTOP	LAUNCHXL-CC1312R1 D WCS042 D
	DATE: 2018-10-10	



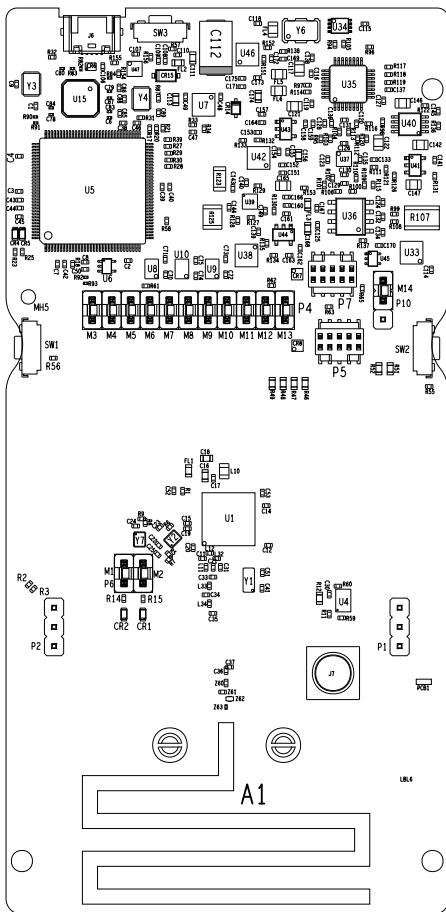
	TEXAS INSTRUMENTS	
	SILKBOT	LAUNCHXL-CC1312R1 D WCS042 D
	DATE: 2018-10-10	



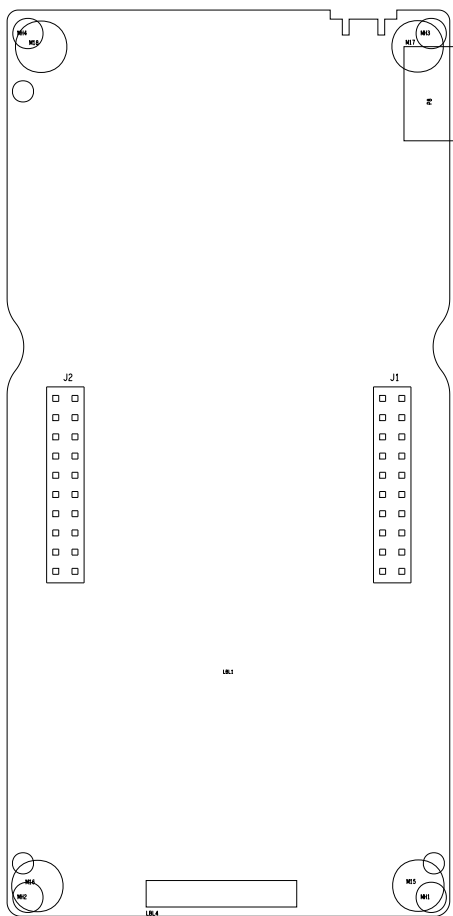
	TEXAS INSTRUMENTS	
	PM TOP	LAUNCHXL-CC1312R1 D WCS042 D
	DATE: 2018-10-10	

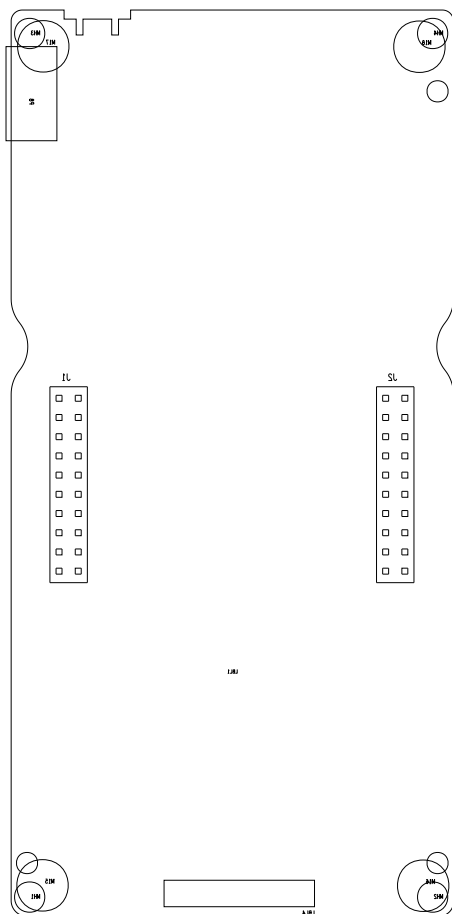


	TEXAS INSTRUMENTS	
	PM BOT	LAUNCHXL-CC1312R1 D WCS042 D
	DATE: 2018-10-10	



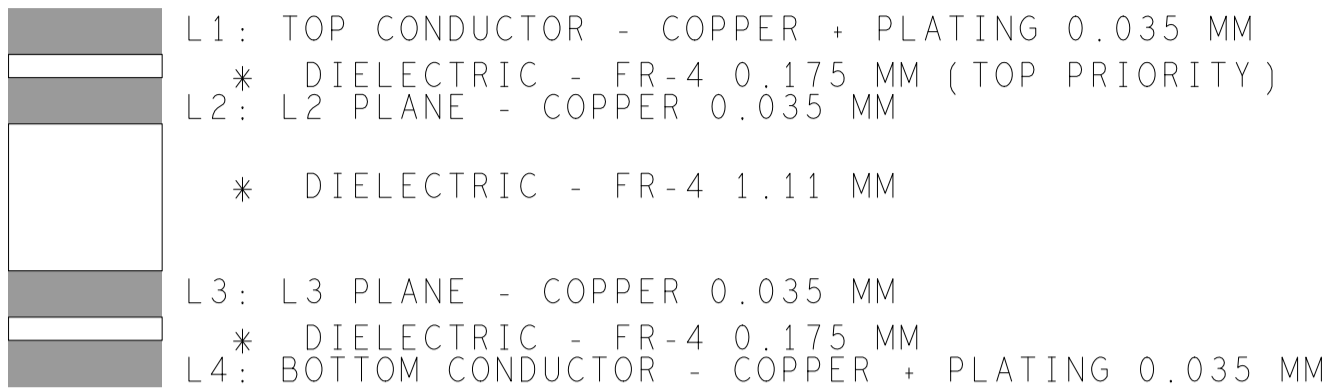
	TEXAS INSTRUMENTS	
	ASSYTOP	LAUNCHXL-CC1312R1 D WCS042 D
	DATE: 2018-10-10	





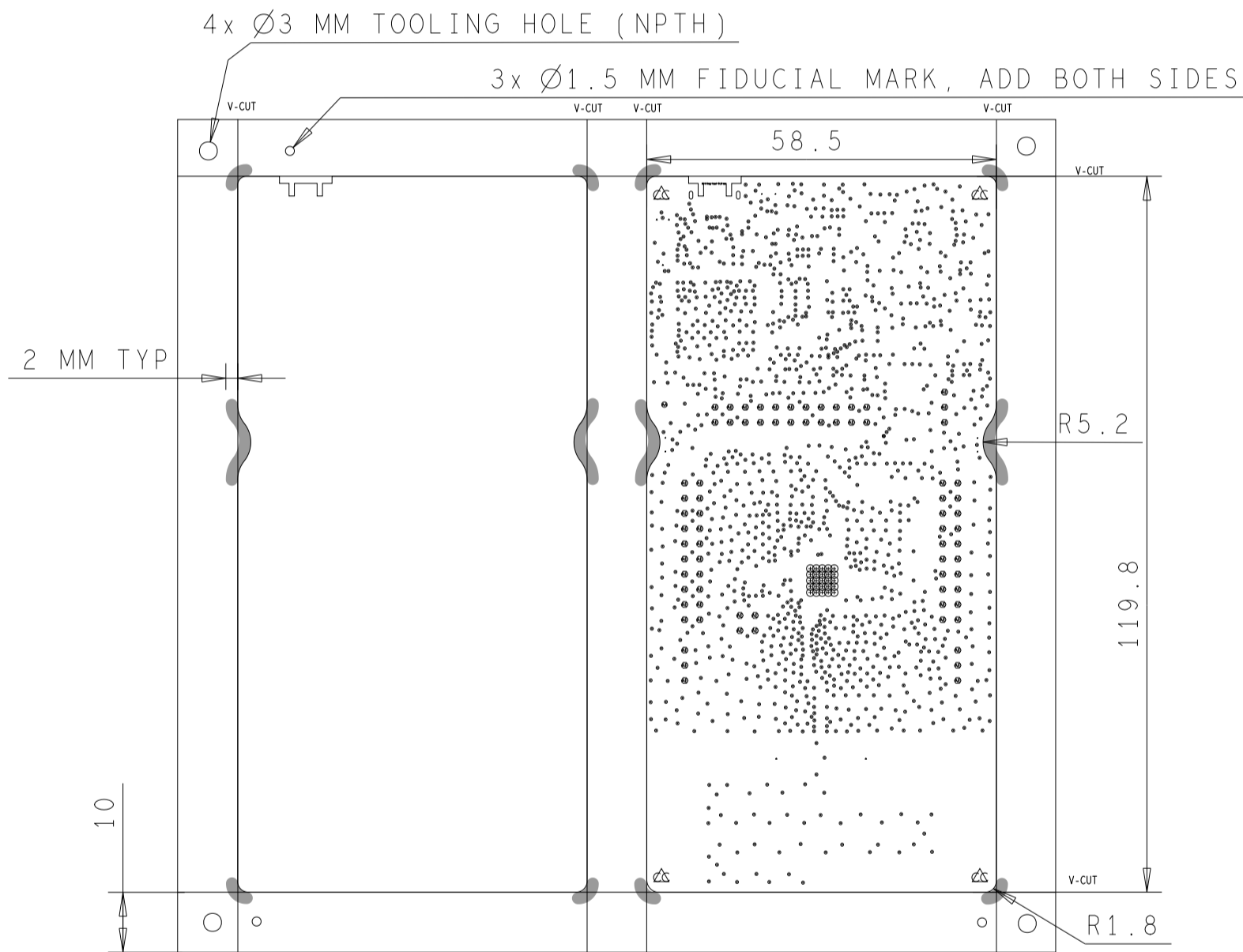
	TEXAS INSTRUMENTS	
	ASSYBOT	LAUNCHXL-CC1312R1 D WCS042 D
	DATE: 2018-10-10	

DESIGN CROSS SECTION CHART
TOTAL THICKNESS 1.6 MM



REVISIONS			
REV	DESCRIPTION	DATE	APPROVED
E1	Initial Version	2017-08-09	2017-08-09
A	Production Release Version	2017-10-20	2017-10-20
B	Production Release Version (Added DustBin Symbol)	2018-01-04	2018-01-04
C	Updated with new Energy Trace Circuit	2018-07-09	2018-07-09
D	Production Release Version (Added CE Logo)	2018-10-10	2018-10-10

PANEL DRAWING



DRILL CHART: TOP to BOTTOM				
ALL UNITS ARE IN MILLIMETERS				
FIGURE	FINISHED_SIZE	ROTATION	PLATED	QTY
•	0.2	-	PLATED	1369
⊙	0.201	-	PLATED	25
•	1.05	-	PLATED	75
•	1.1	-	PLATED	1
⊕	3.2	-	PLATED	4
•	0.899	-	NON-PLATED	6
•	1.0	-	NON-PLATED	3
•	3.2	-	NON-PLATED	2
⊙	1.3x0.6	90.000	PLATED	2

TOTAL HOLES: 1487

TEXAS INSTRUMENTS
DRILL LAUNCHXL-CC1312R1 D WCS042 D
DATE: 2018-10-10

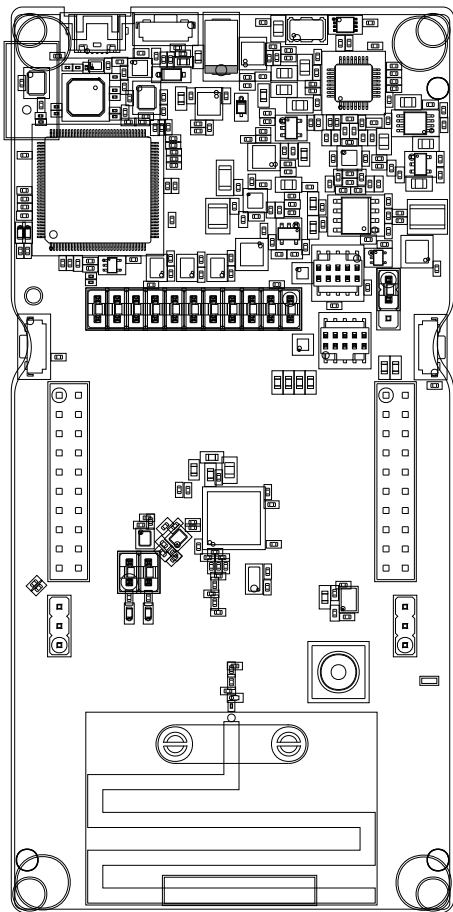
FAB NOTES:

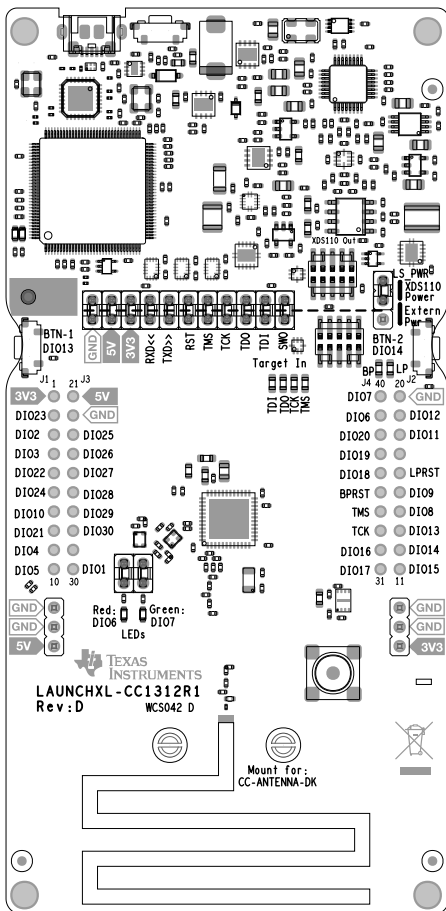
- ALL DIMENSIONS ARE IN MM, UNLESS OTHERWISE NOTED.
- THE PWB SHALL BE FABRICATED TO IPC-6012, CLASS 2 AND WORKMANSHIP SHALL CONFORM TO IPC-A-600, CLASS 2, CURRENT REVISIONS.
- BOARD MATERIAL SHALL BE 180 Tg/340 Td ISOLA FR-370HR OR EQUIVALENT, RoHS COMPLIANT AND LEAD FREE ASSEMBLY CAPABLE. BOARD MATERIAL SHALL MEET OR EXCEED IPC-4101B. RoHS/REACH CERTIFICATE OF CONFORMANCE SHALL BE DELIVERED WITH EACH LOT.
- BOARD MATERIAL & CONSTRUCTION TO BE U.L. 94V-0 APPROVED AND MARKED ON THE FINISHED BOARD. UL GUIDE NUMBER SHOULD BE MARKED ON THE FINISHED BOARD.
- OVERALL BOARD THICKNESS TO BE 1.6 MM AND APPLIES AFTER ALL LAMINATION AND PLATING PROCESSES, MEASURED FROM COPPER TO COPPER.
- MAX. WARP & TWIST TO BE .0075 PER INCH.
- BOARD MUST BE ELECTRICALLY TESTED USING SUPPLIED IPC-D-356 NETLIST.
- 0.32MM TRACES ON LAYER 1 ARE 50 OHMS +/-10%, THEY ARE REFERENCE TO LAYER 2 GROUND.
- MANUFACTURER MARKING: TWO LETTER + YEAR + WEEK
THE LETTER CODE SHALL IDENTIFY THE MAUFACTURER AND IS DECIDED BY MFR. NO LOGOS OR OTHER IDENTIFIERS ARE ALLOWED
THE MARKING SHALL BE IN BOTTOM SILK SCREEN PRINT

PROCESS NOTES:

- APPLY LPI SOLDERMASK OVER BARE COPPER (SMOBC), SOLDERMASK SHALL CONFORM TO IPC-SM-840, CLASS H, CURRENT REV, COLOR OF MASK TO BE RED.
- PLATE ALL EXPOSED AREAS WITH ELECTROLESS NICKEL IMMERSION GOLD. NICKEL:100 MICRO-INCHES MIN. GOLD:2-8 MICROINCHES MIN.
- SOLDERMASK ARTWORK HAS ZERO (0) OVERSIZED PADS. FABRICATION VENDOR IS ALLOWED TO ADJUST THE COMPONENT SOLDERMASK PADS TO MEET THEIR TOOLING REQUIREMENTS.
- APPLY NON-CONDUCTIVE LPI SILKSCREEN OR EQUIVALENT PER THE ARTWORK. COLOR: WHITE.
- ALL VIAS ARE TENTED.

UNLESS OTHERWISE SPECIFIED		SIGNATURES	DATE	TEXAS INSTRUMENTS		
DIMENSIONS ARE IN MM	DRAWN	PM	2018-10-10	FABRICATION DRAWING LAUNCHXL-CC1312R1 CC1312R LaunchPad WCS042 D		
	CHECKED	TA,SJ	2018-10-10			
				SIZE	FSCM NO	DWG NO
				SCALE	NONE	SHEET 1 OF 1





	TEXAS INSTRUMENTS	
	SILKTOP	LAUNCHXL-CC1312R1 D WCS042 D
	DATE: 2018-10-10	