
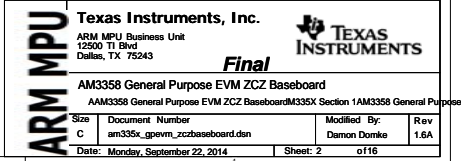


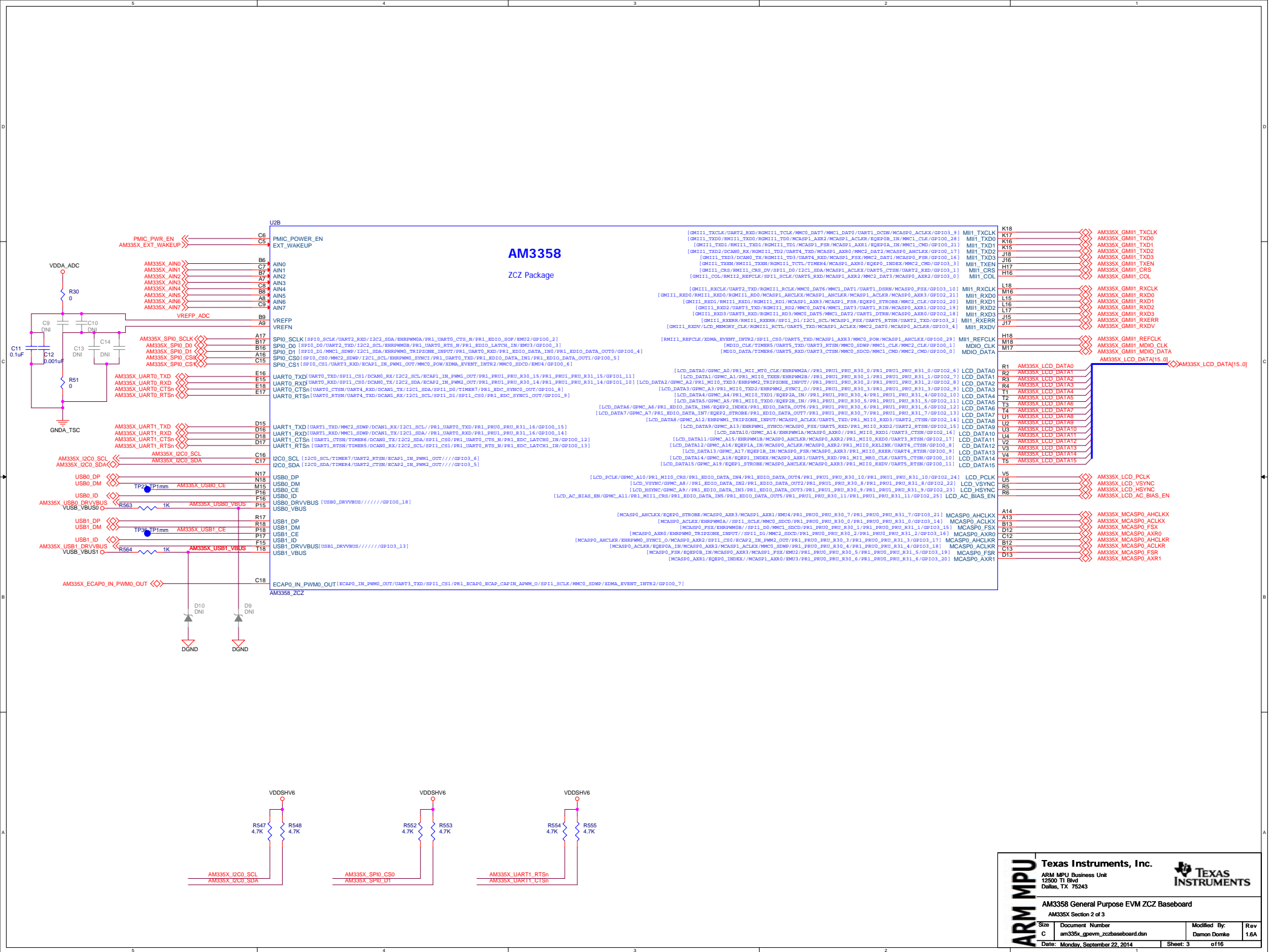
# ARM MPU AM3358 General Purpose EVM Base Board ZCZ Package

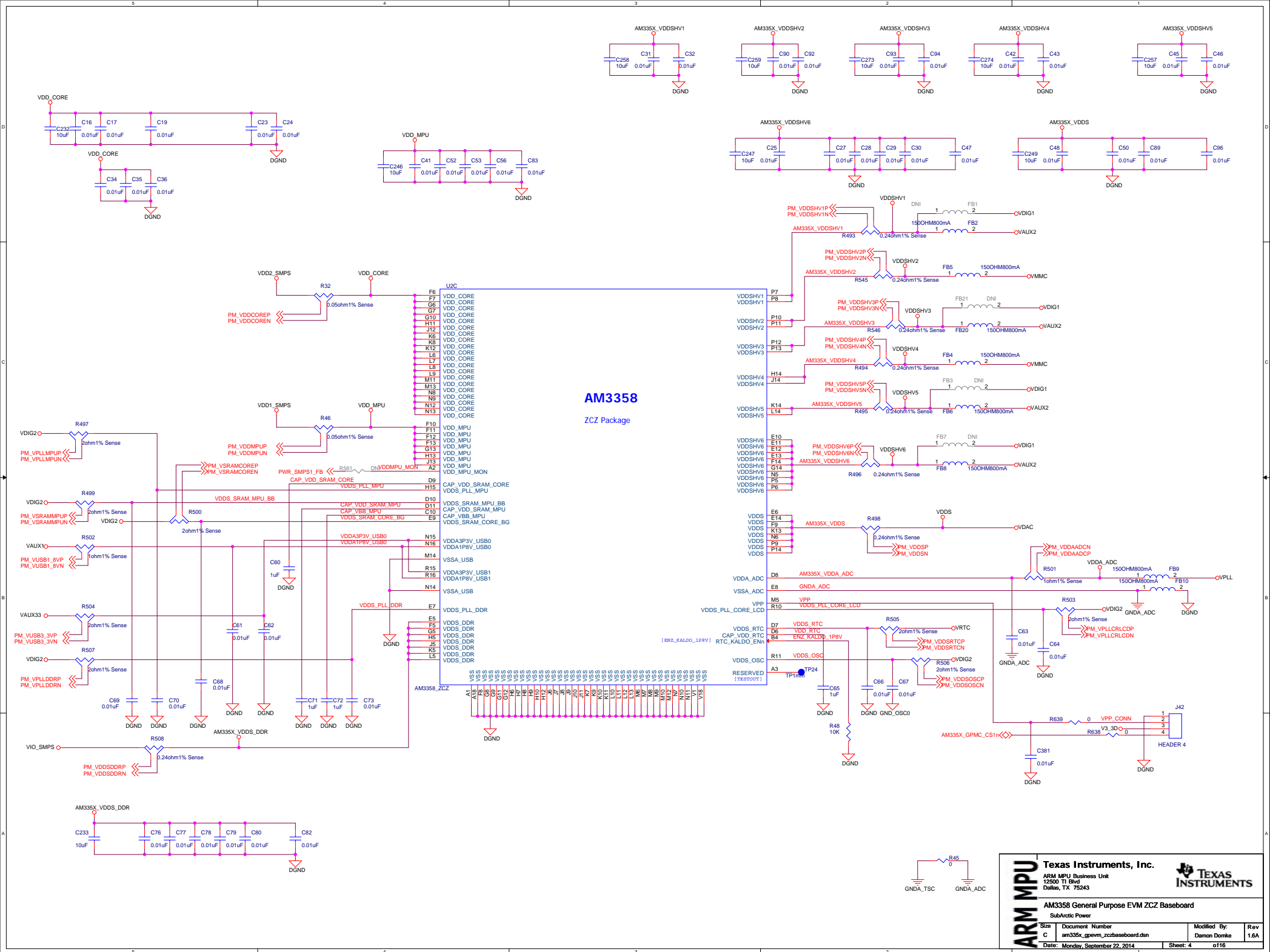
- See the Hardware User Guide for board details
- See the PCB Build Specification for PCB Details
- See the EVM Errata Document for Known Issues

PCB1  
AM3358x ZCZ Base Board Bare PCB

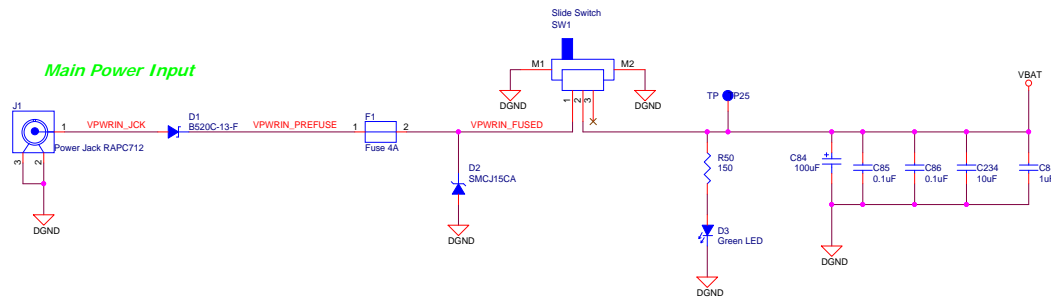
ARM MPU	Texas Instruments, Inc.				
	ARM MPU Business Unit 12500 TI Blvd Dallas, TX 75243				
	<b>Final</b>				
	AM3358 General Purpose EVM ZCZ Baseboard				
	Title Page				
Size	Document	Number	Modified By:	Rev	
C	am3358x_gpevm_zczbaseboard.dsn		Damon Domke	1.6A	
Date: Wednesday, August 27, 2014			Sheet: 1	of 16	



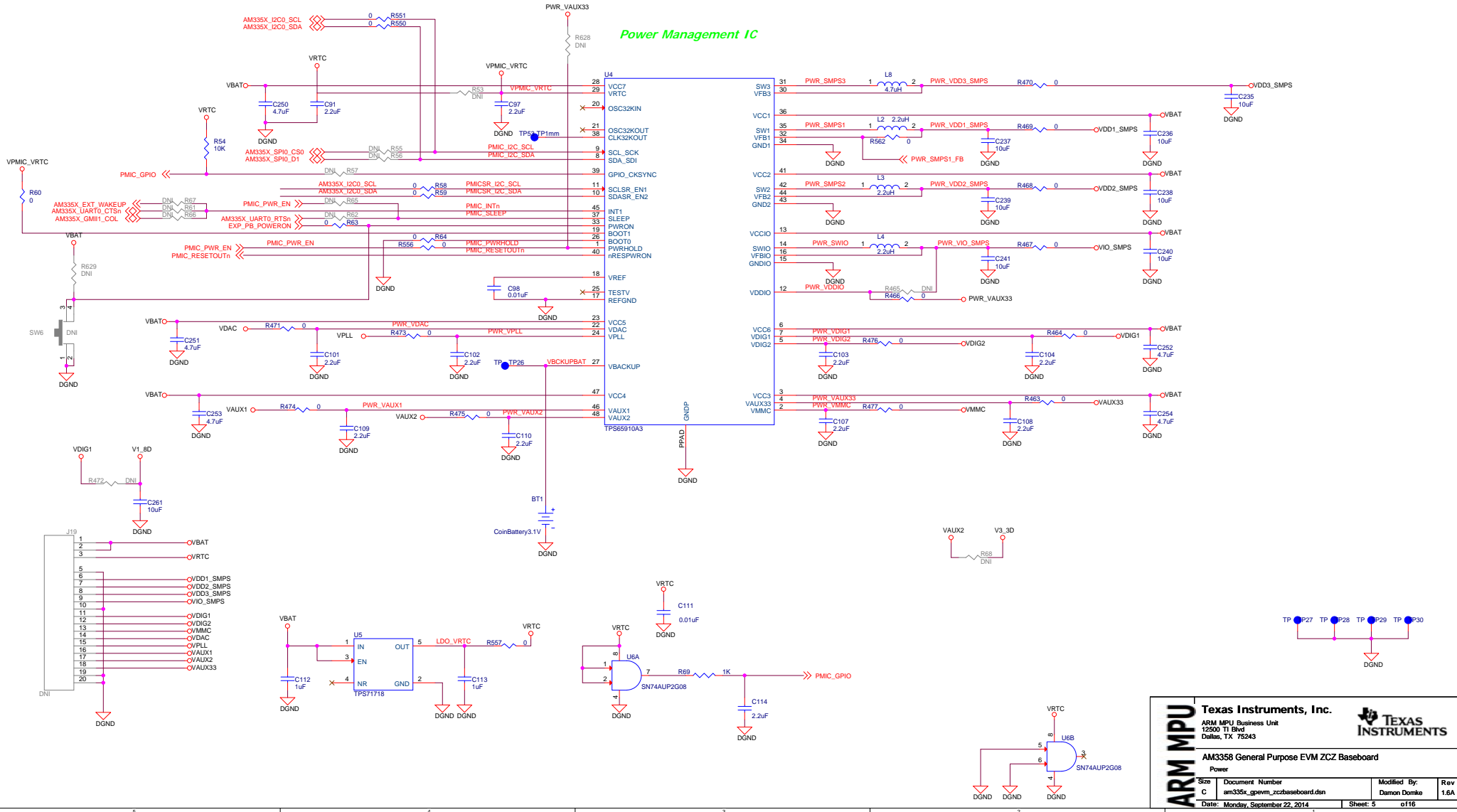




# Main Power Input

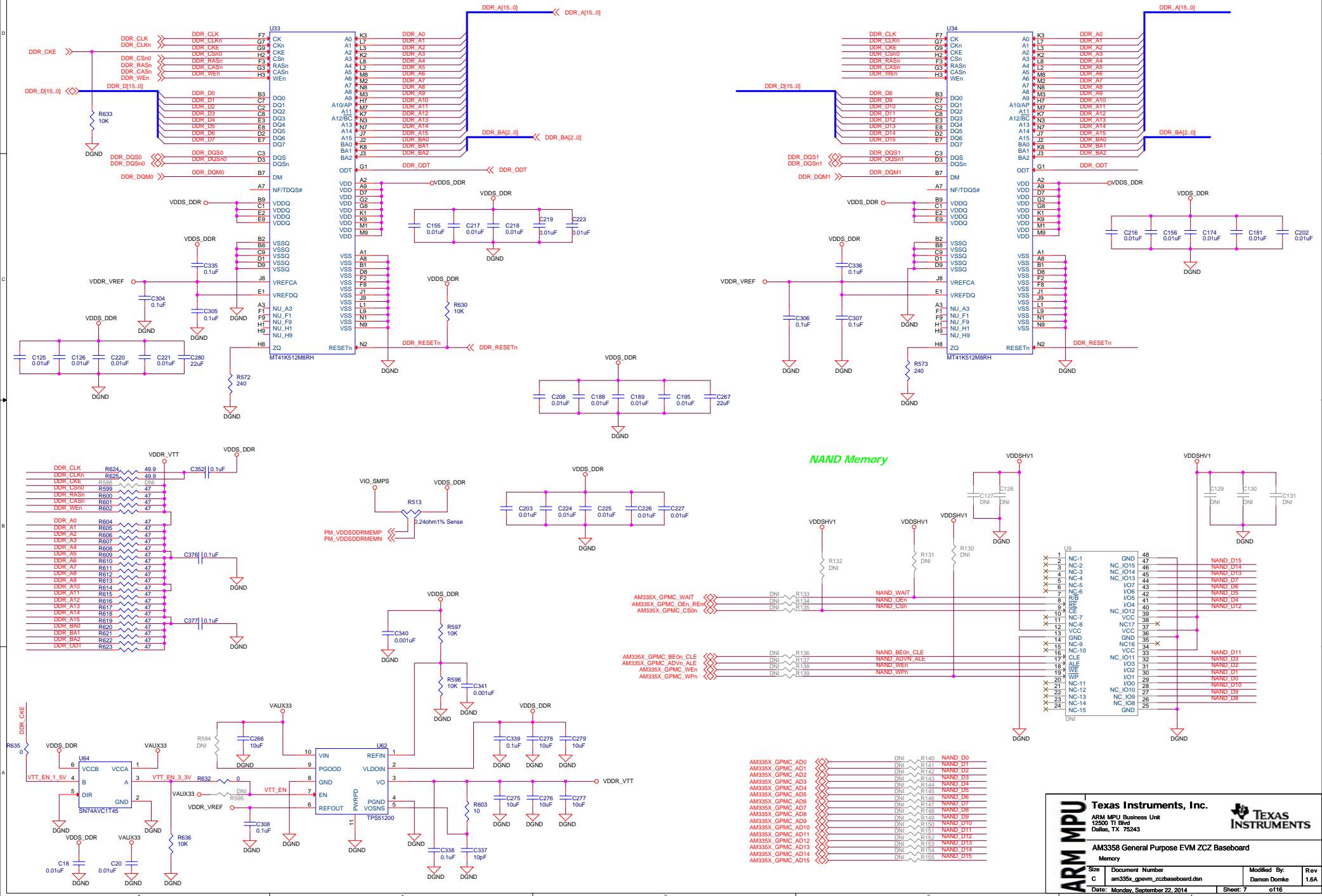


# Power Management IC

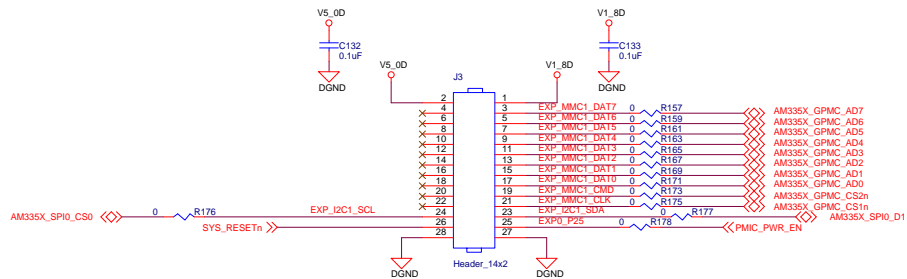




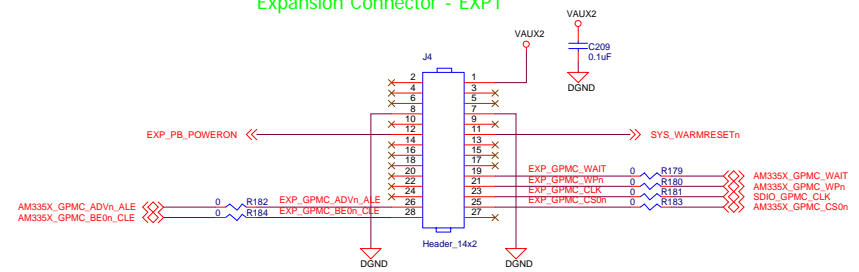
### DDR3 SDRAM



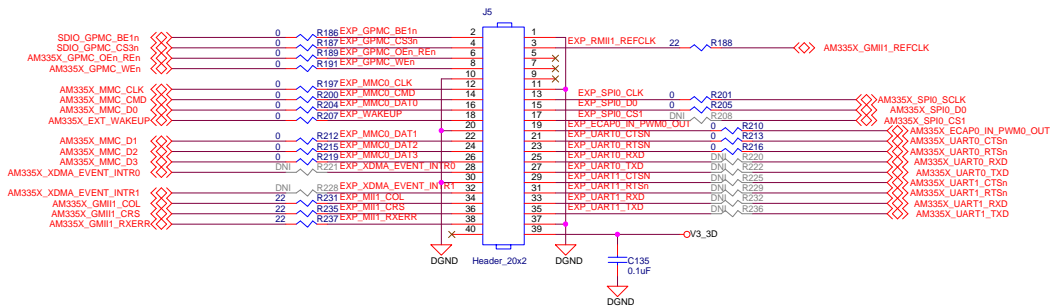
## Expansion Connector - EXP0



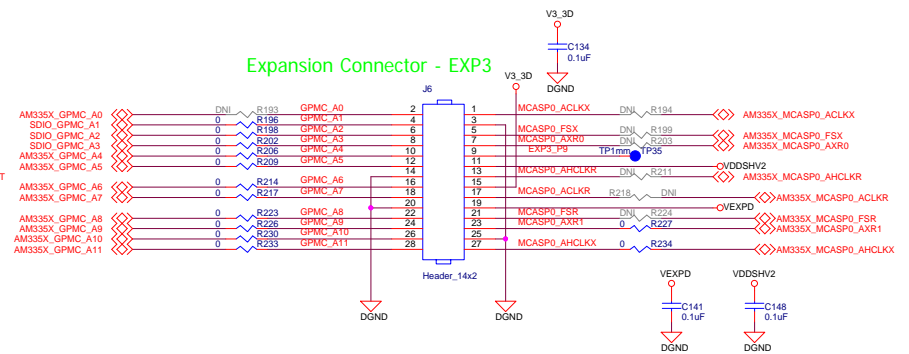
### Expansion Connector - EXP1



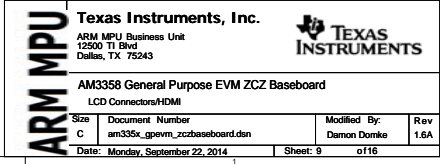
## Expansion Connector - EXP2

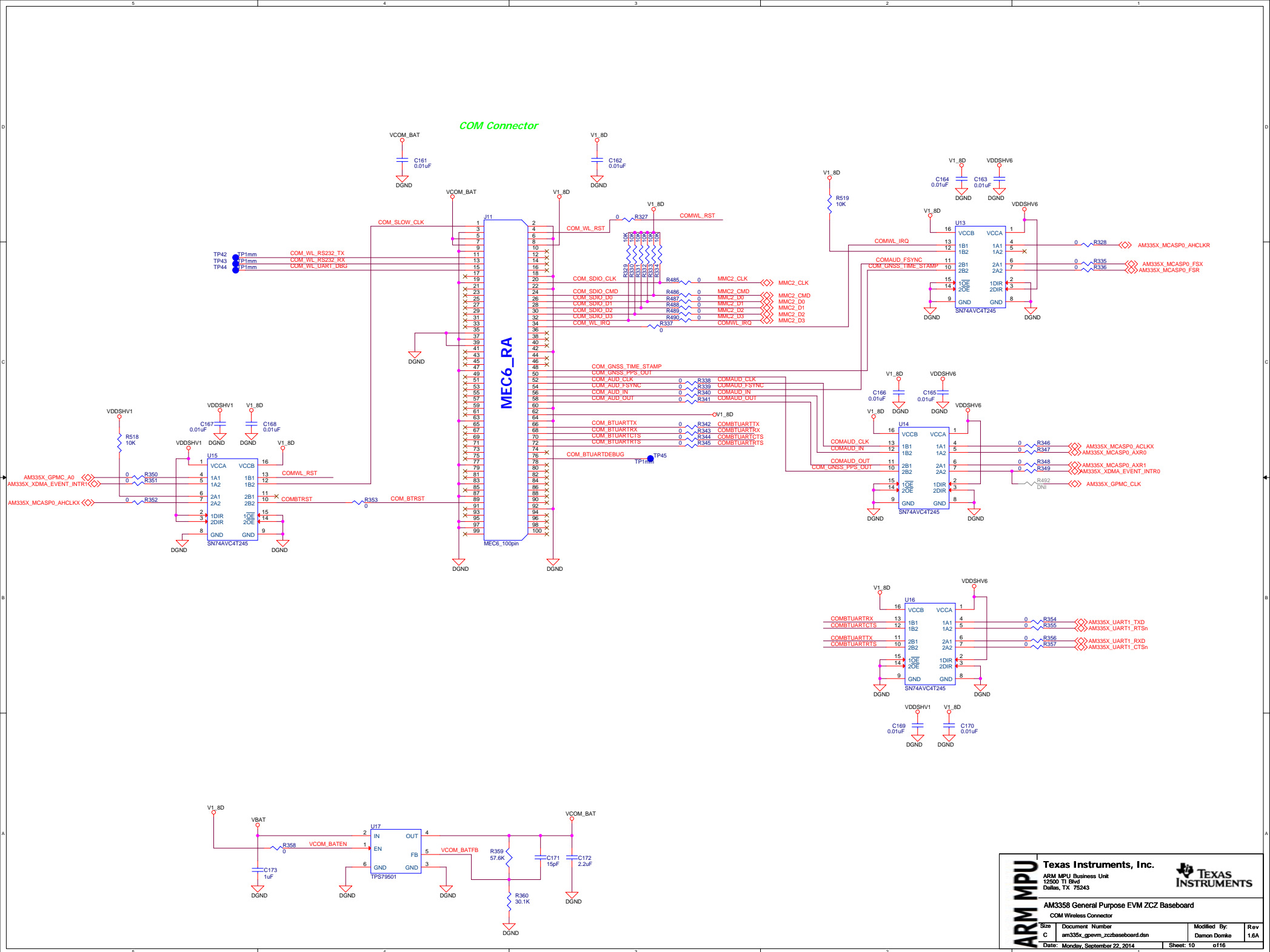


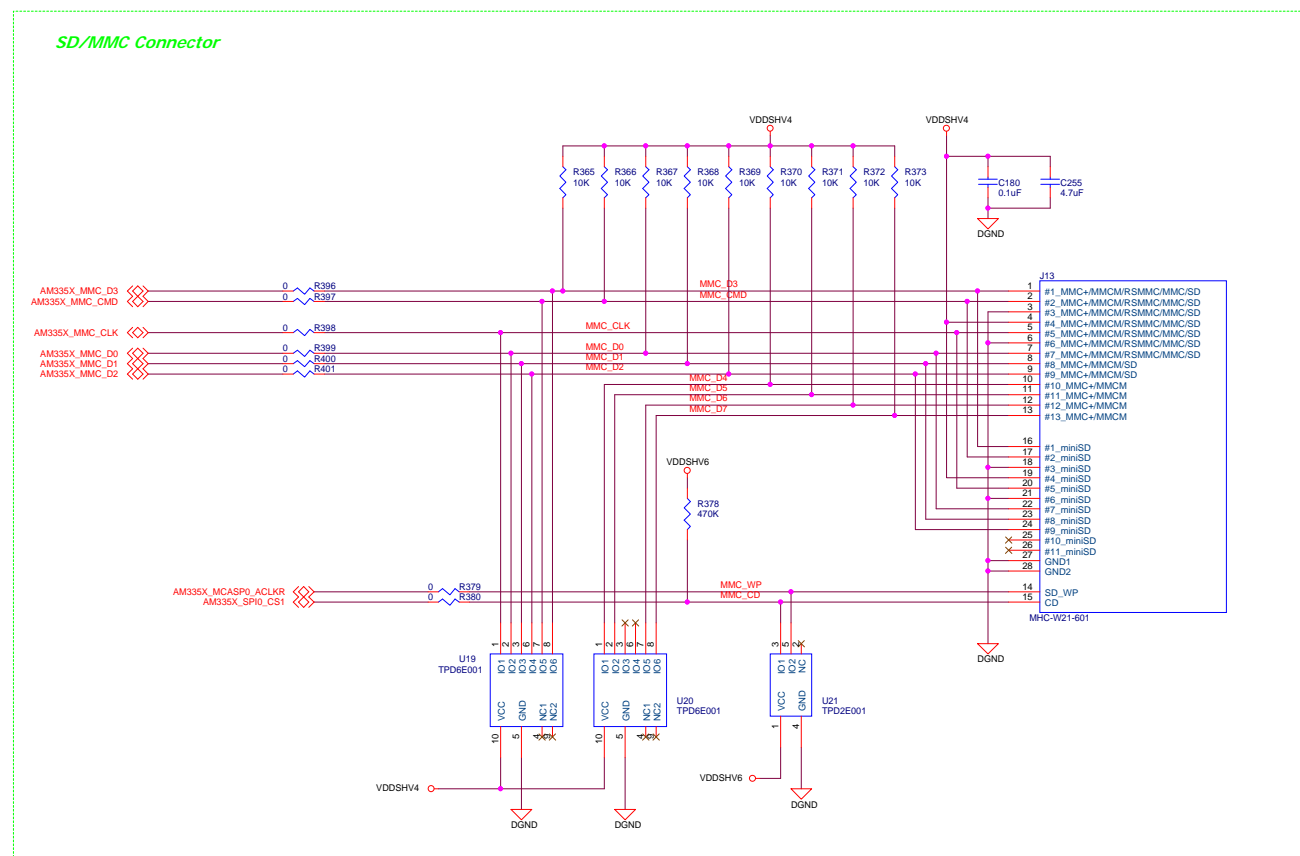
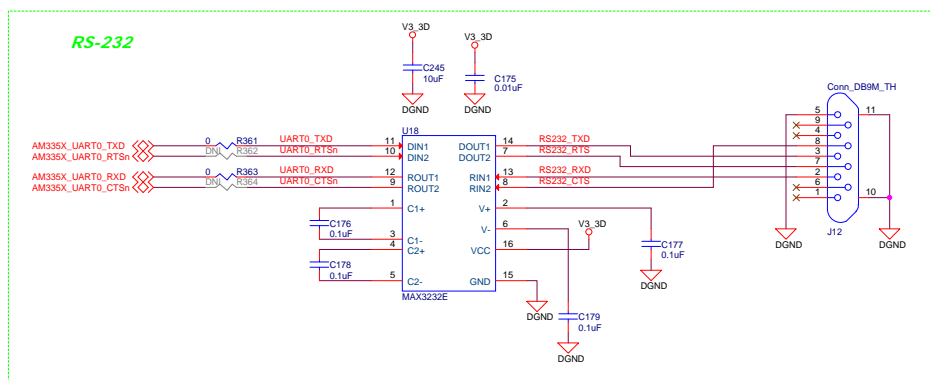
Expansion Connector - EXP3

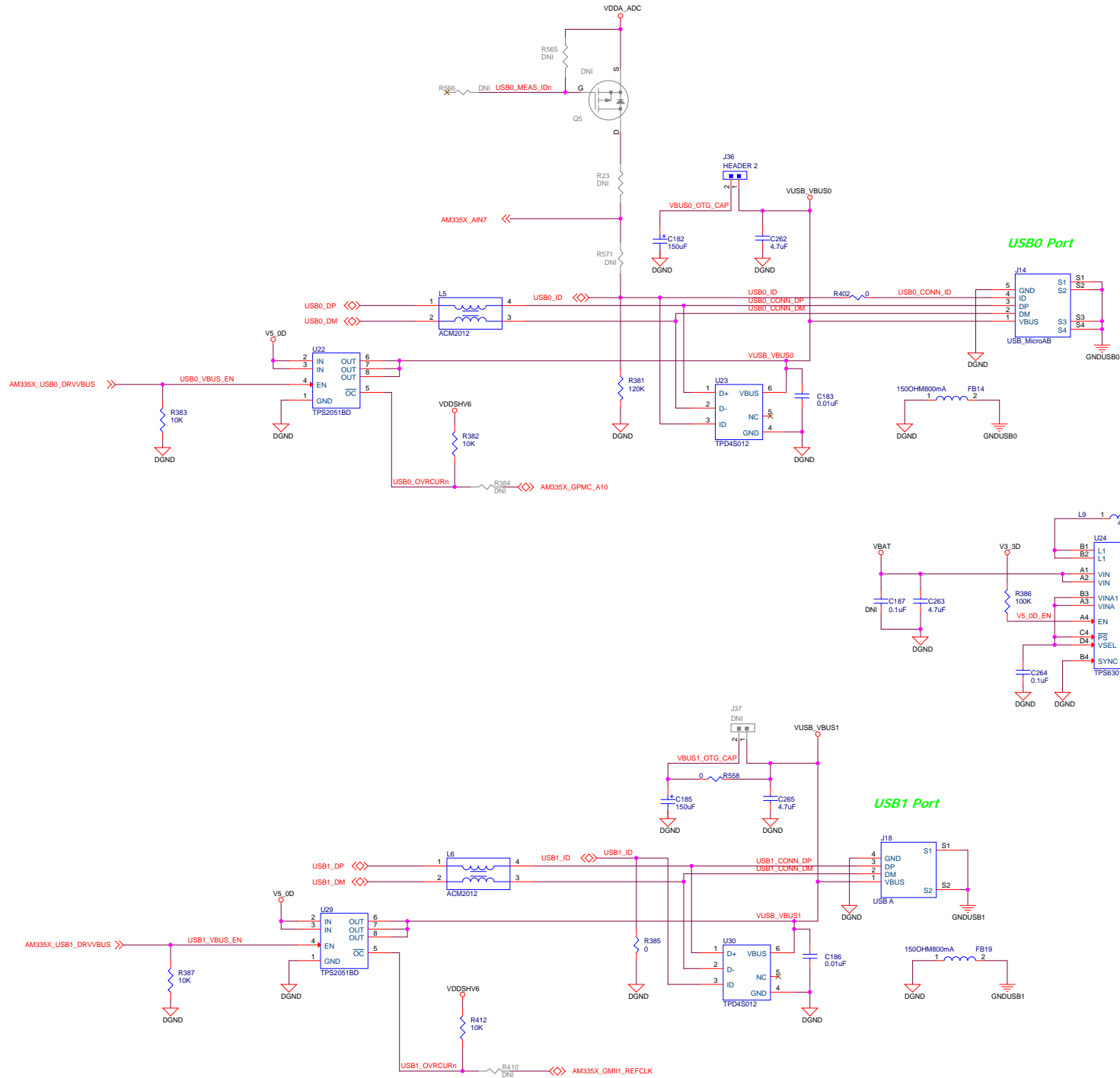


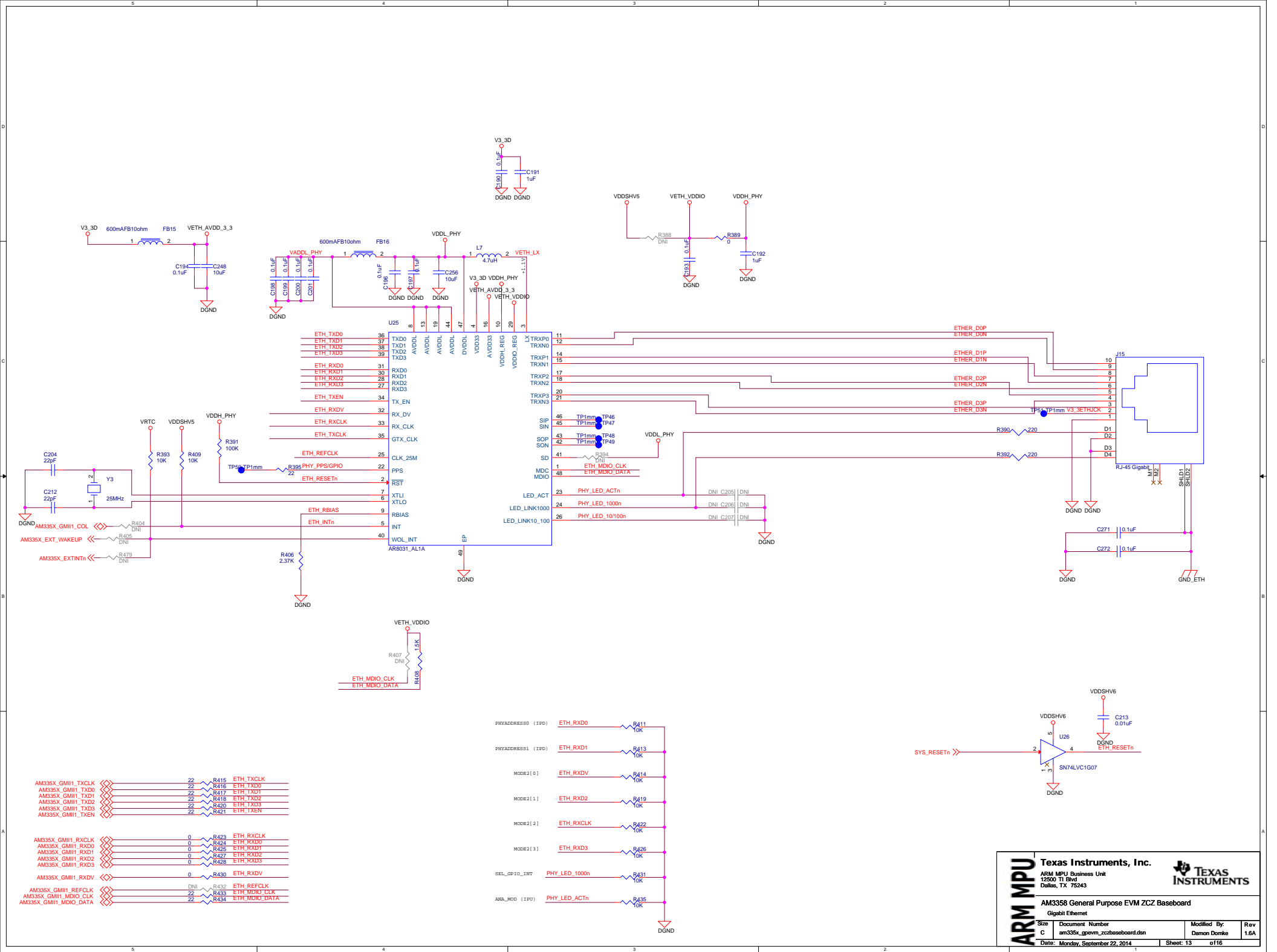












# MAVRK Connector

