

IWR1443BOOST

PROC010

REVISIONS

SEE SHEET 2

TABLE OF CONTENTS

[illegible]

ASSEMBLY NOTES:

ASSEMBLIES MUST BE CLEAN AND FREE FROM FLUX AND ALL CONTAMINANTS. USE OF NO CLEAN FLUX IS NOT ACCEPTABLE

ASSEMBLIES MUST COMPLY WITH WORKMANSHIP STANDARDS IPC-A-610 CLASS 2, UNLESS OTHERWISE SPECIFIED

COMPONENTS MARKED "DNI = TRUE" WILL NOT BE ASSEMBLED



TEXAS INSTRUMENTS

SEMICONDUCTOR OPERATIONS

09/5/2016

CODE IDENTITY NUMBER	
-------------------------	--

01295

--	--

SIZE

B

DRAWING NO.

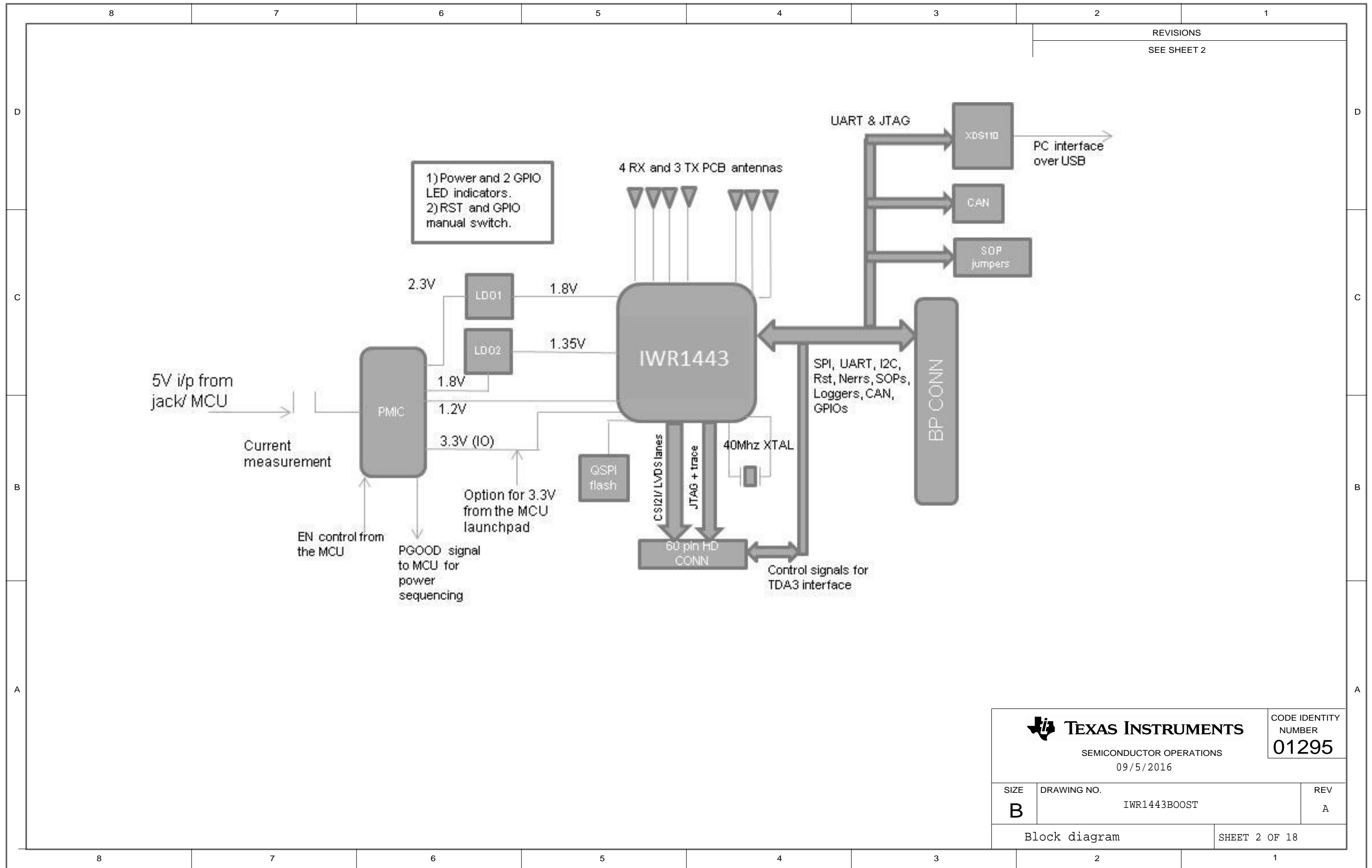
IWR1443BOOST

REV

A

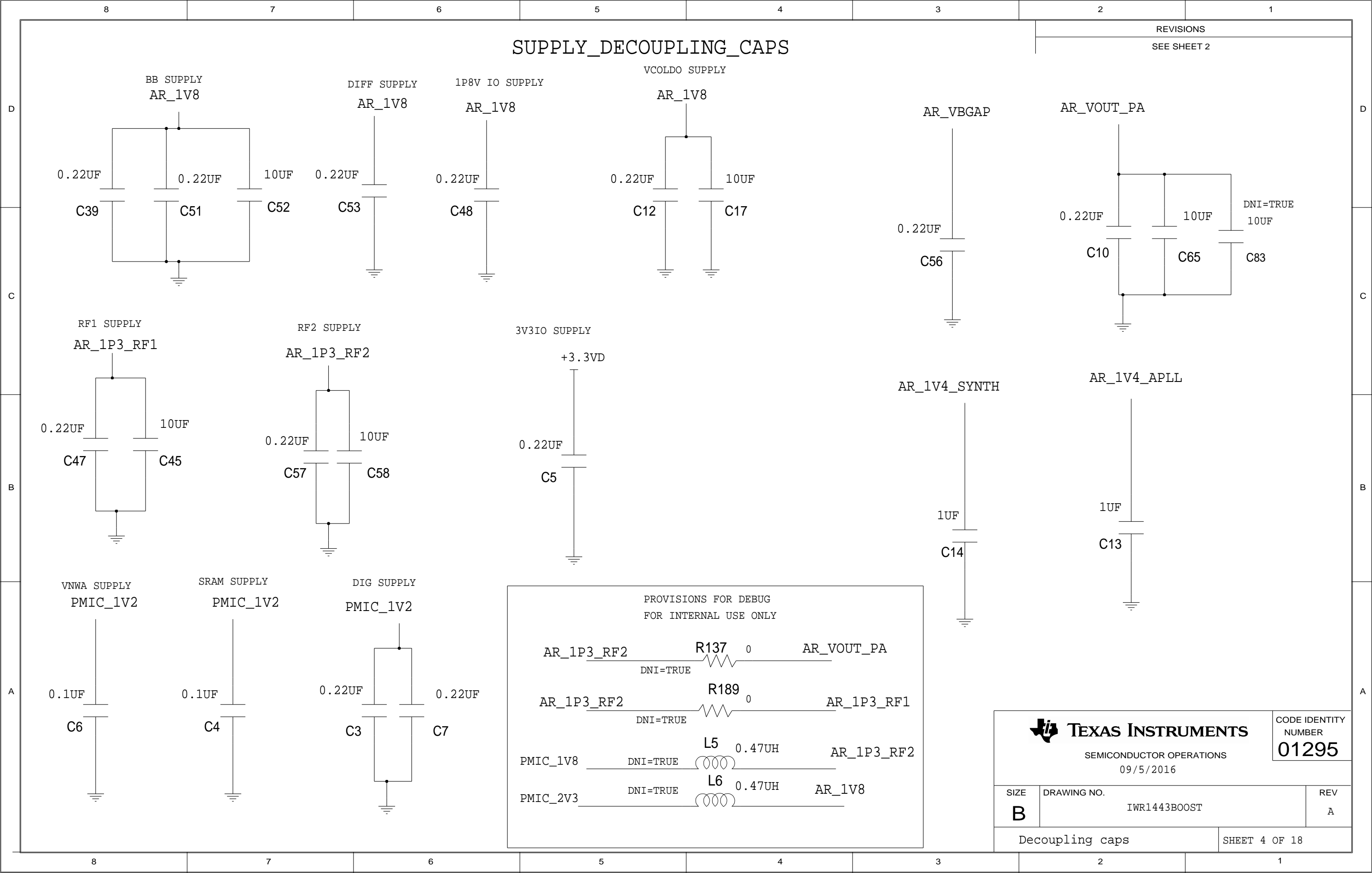
Contents

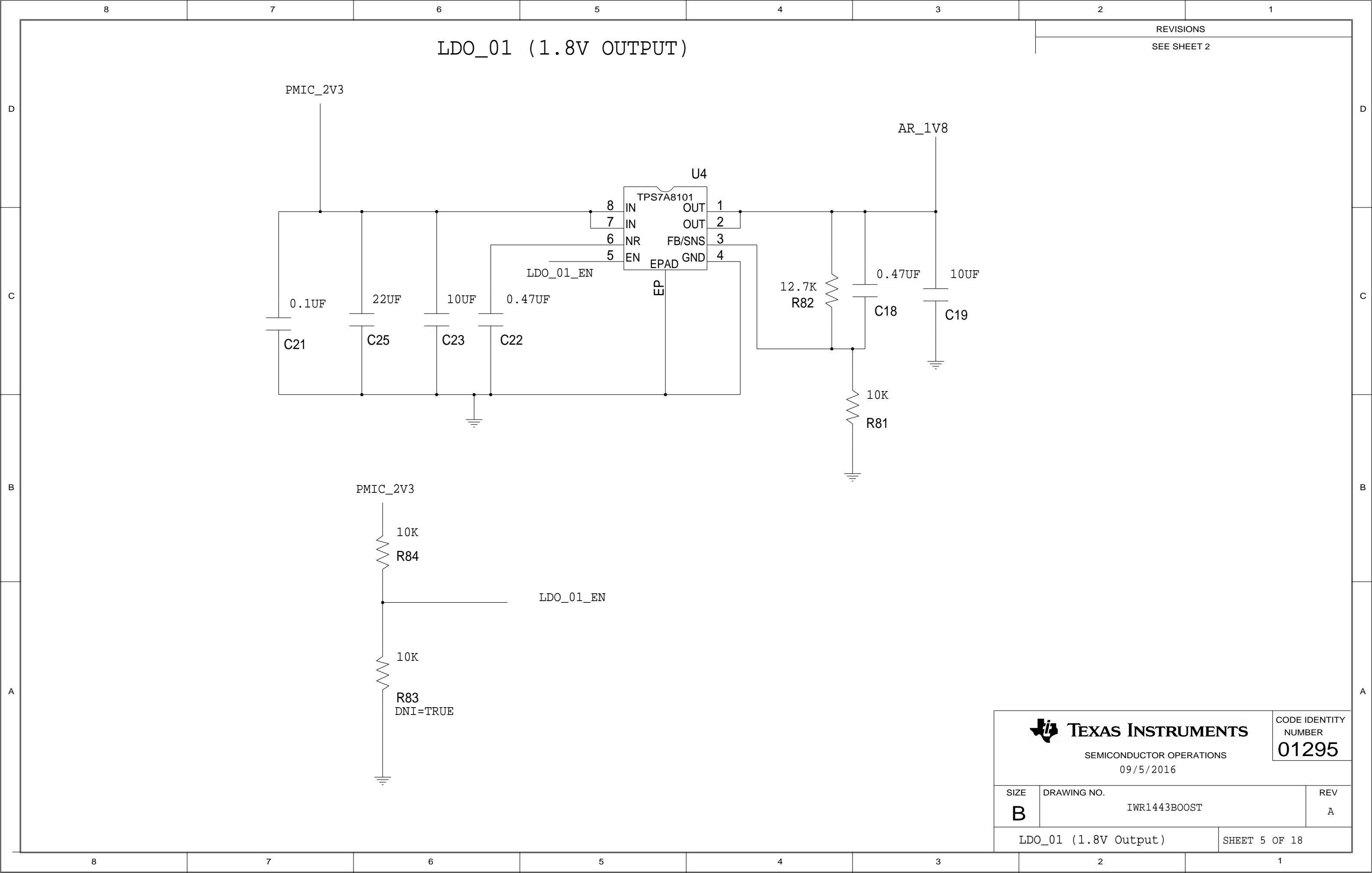
SHEET 1 OF 18

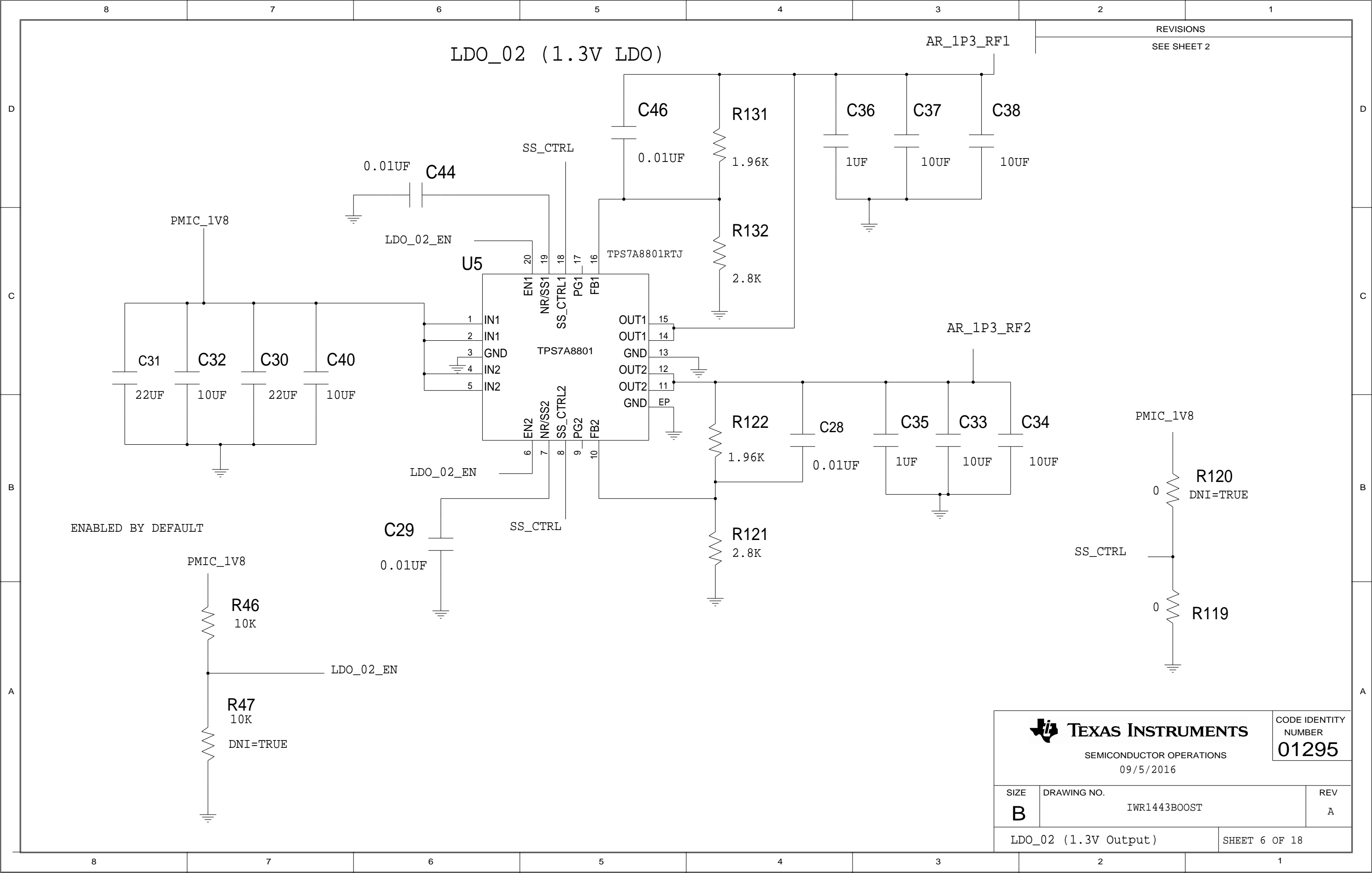



TEXAS INSTRUMENTS		CODE IDENTITY NUMBER 01295
SEMICONDUCTOR OPERATIONS 09/5/2016		
SIZE B	DRAWING NO. IWR1443BOOST	REV A
Block diagram		SHEET 2 OF 18

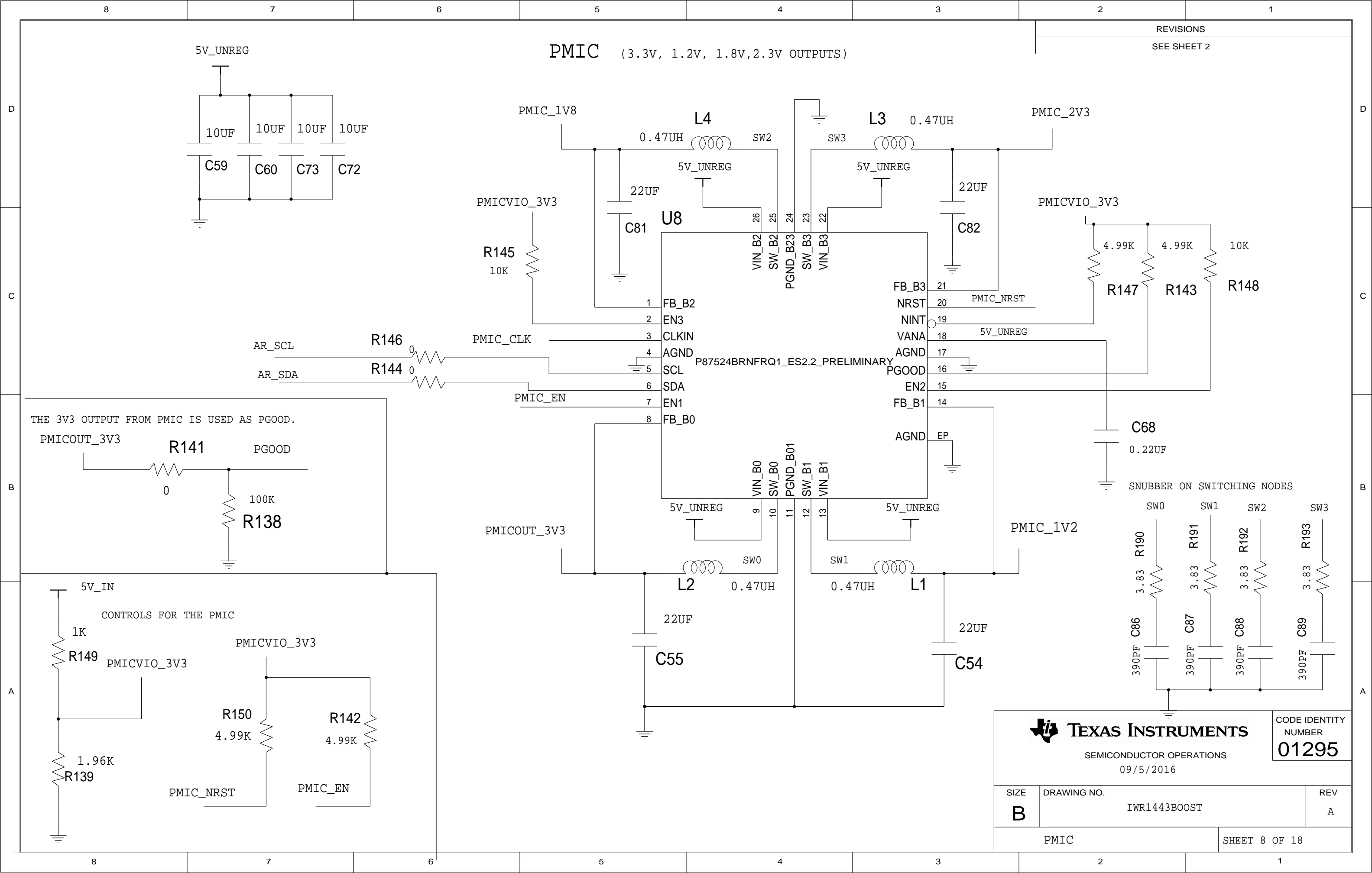








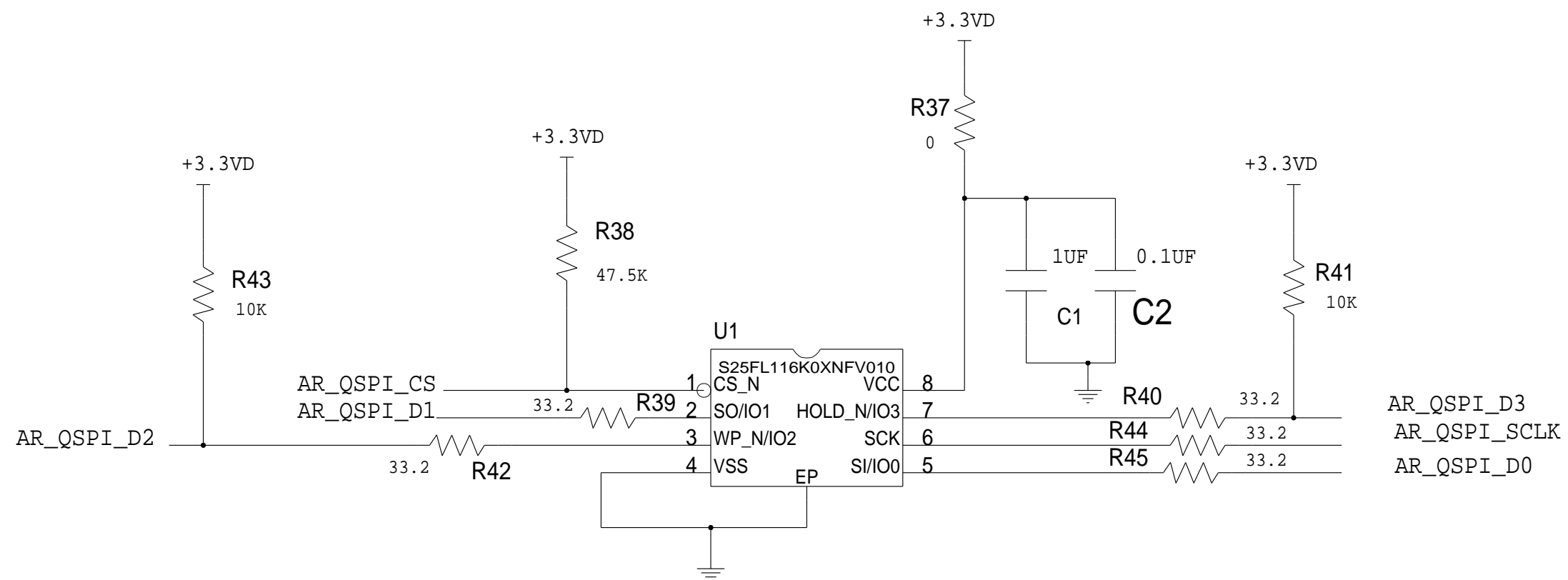
 TEXAS INSTRUMENTS SEMICONDUCTOR OPERATIONS 09/5/2016			CODE IDENTITY NUMBER 01295
SIZE B	DRAWING NO. IWR1443BOOST		REV A
LDO_02 (1.3V Output)		SHEET 6 OF 18	



REVISIONS

SEE SHEET 2

QSPI FLASH



TEXAS INSTRUMENTS

SEMICONDUCTOR OPERATIONS
09/5/2016

CODE IDENTITY NUMBER

01295

SIZE

B

DRAWING NO.

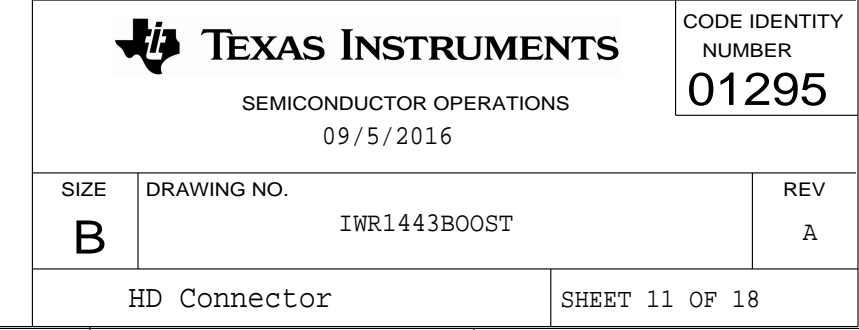
IWR1443BOOST

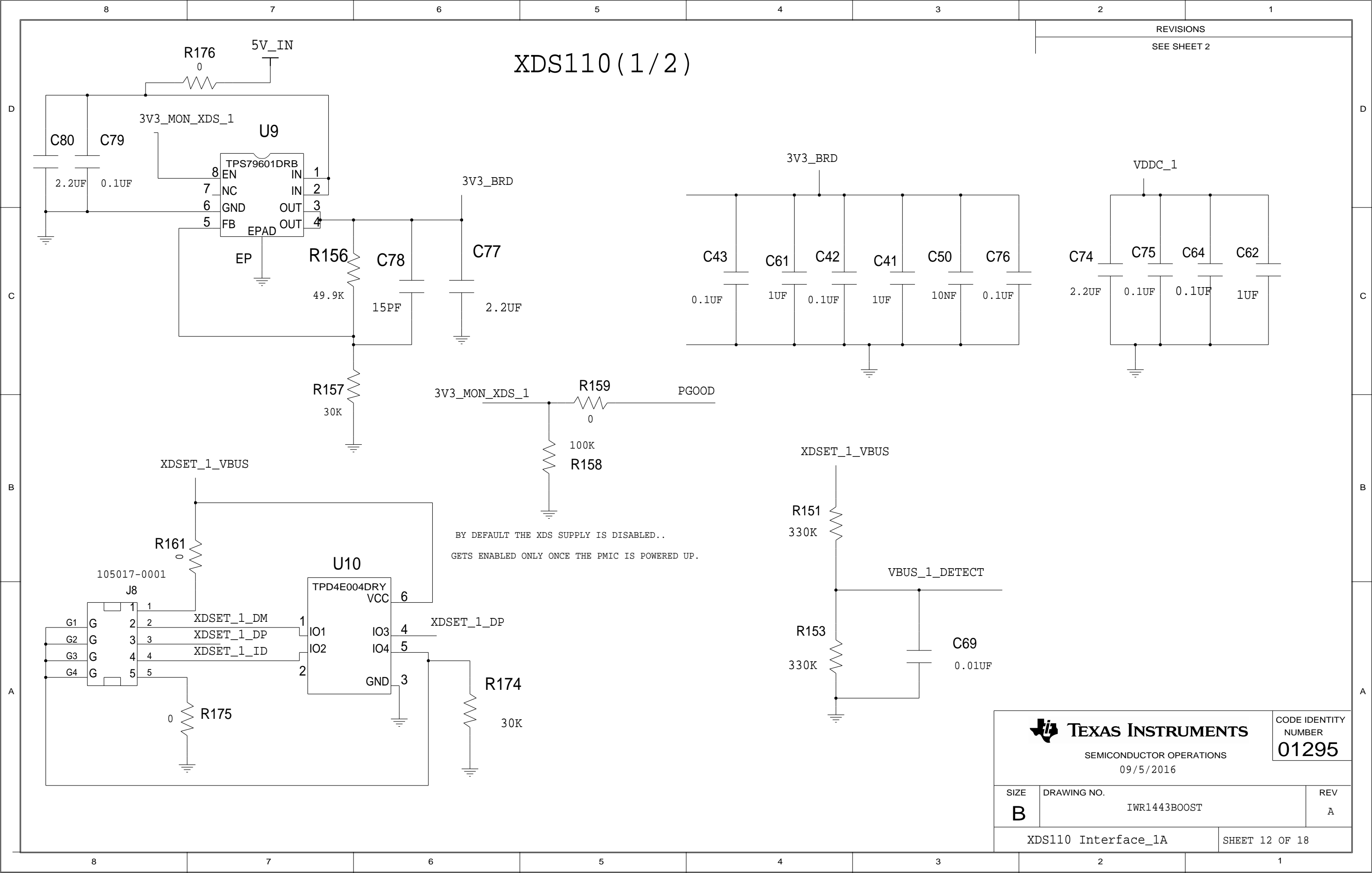
REV

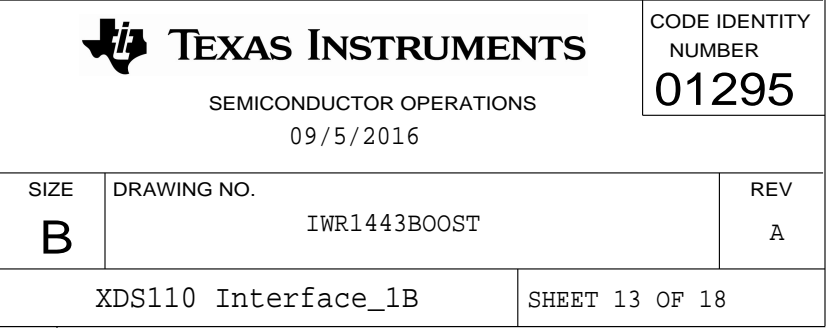
A

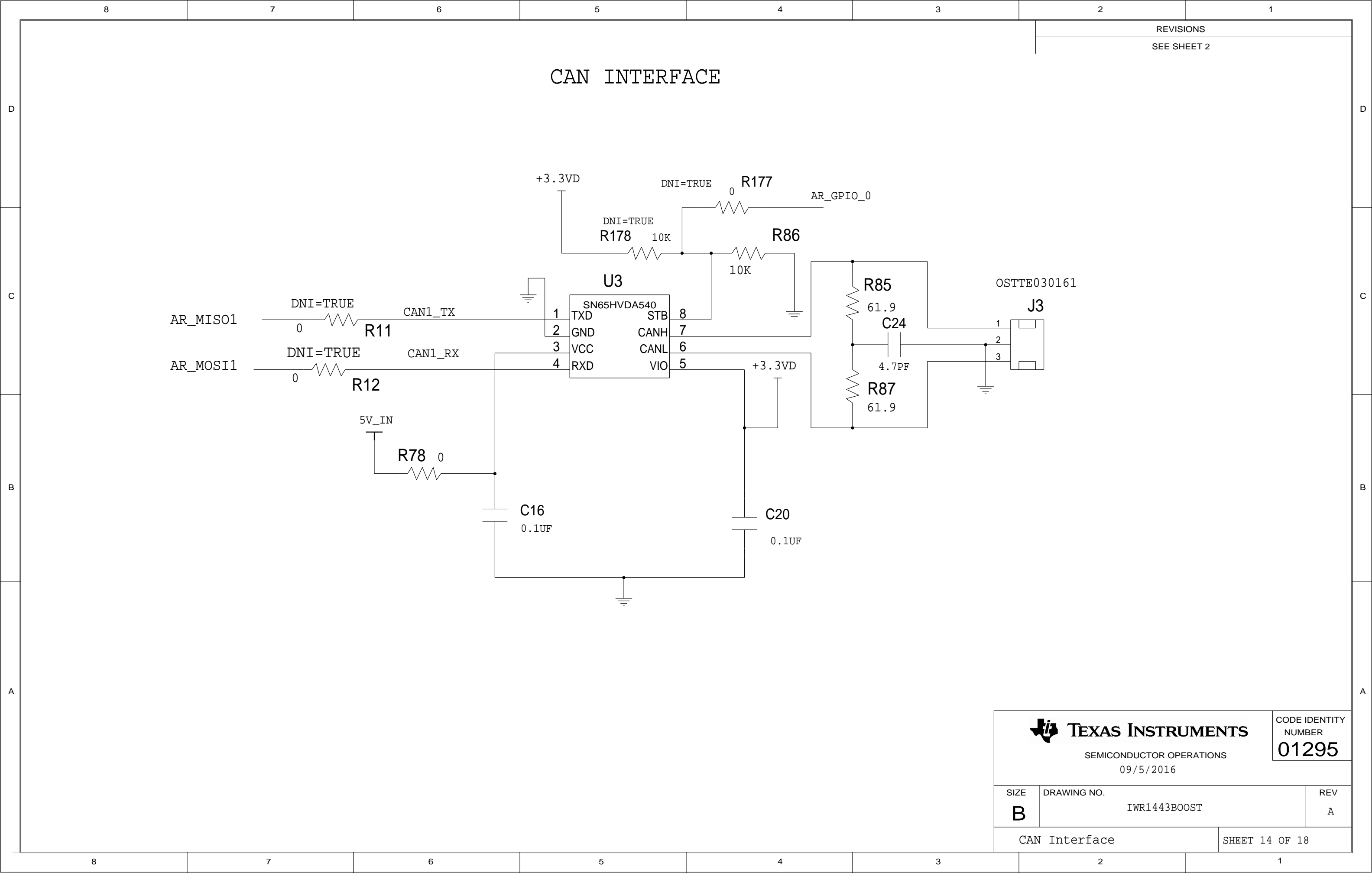
Flash Section

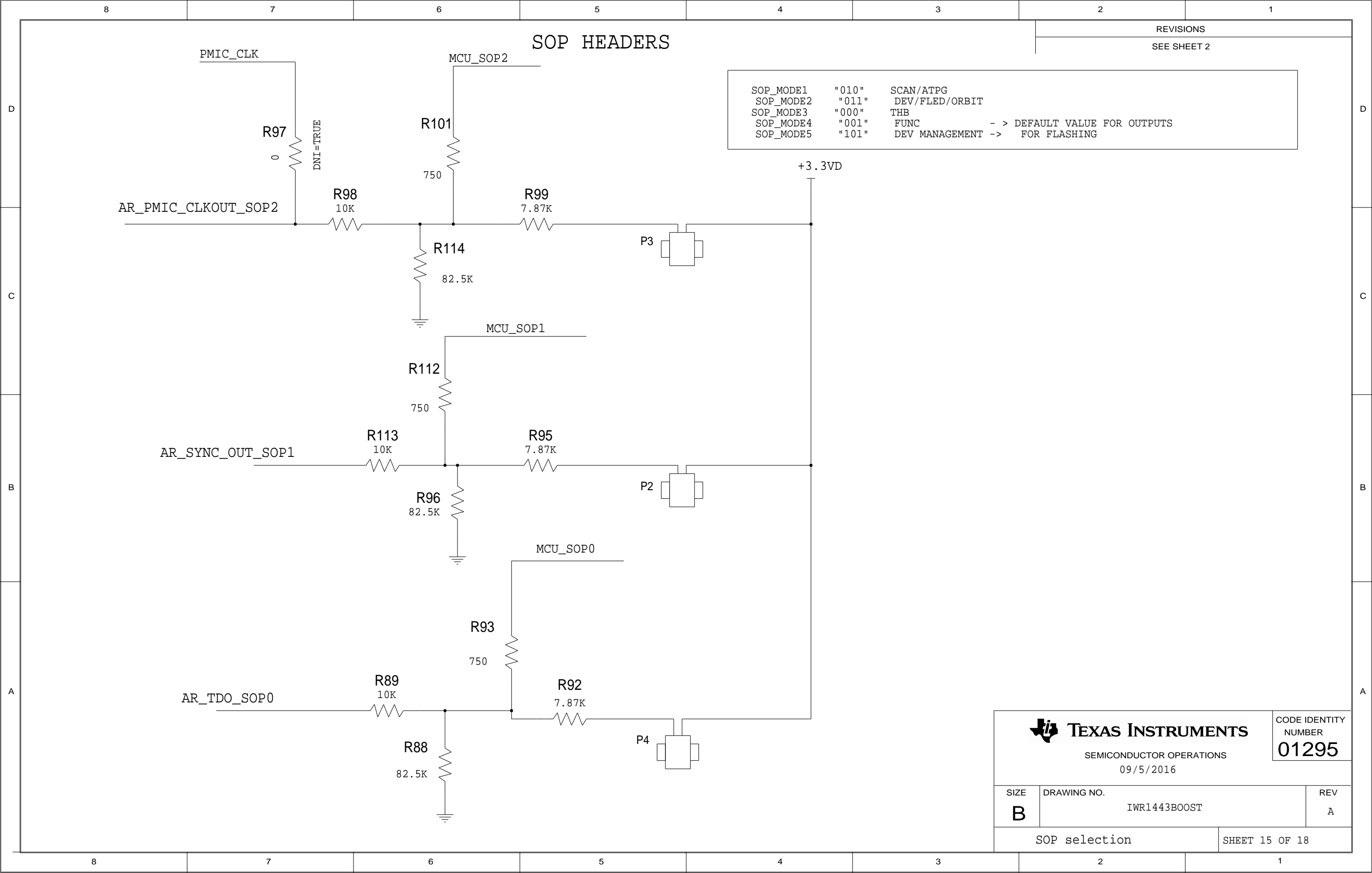
SHEET 9 OF 18












 **TEXAS INSTRUMENTS**

SEMICONDUCTOR OPERATIONS

09/5/2016

CODE IDENTITY NUMBER

01295

SIZE

DRAWING NO.

REV

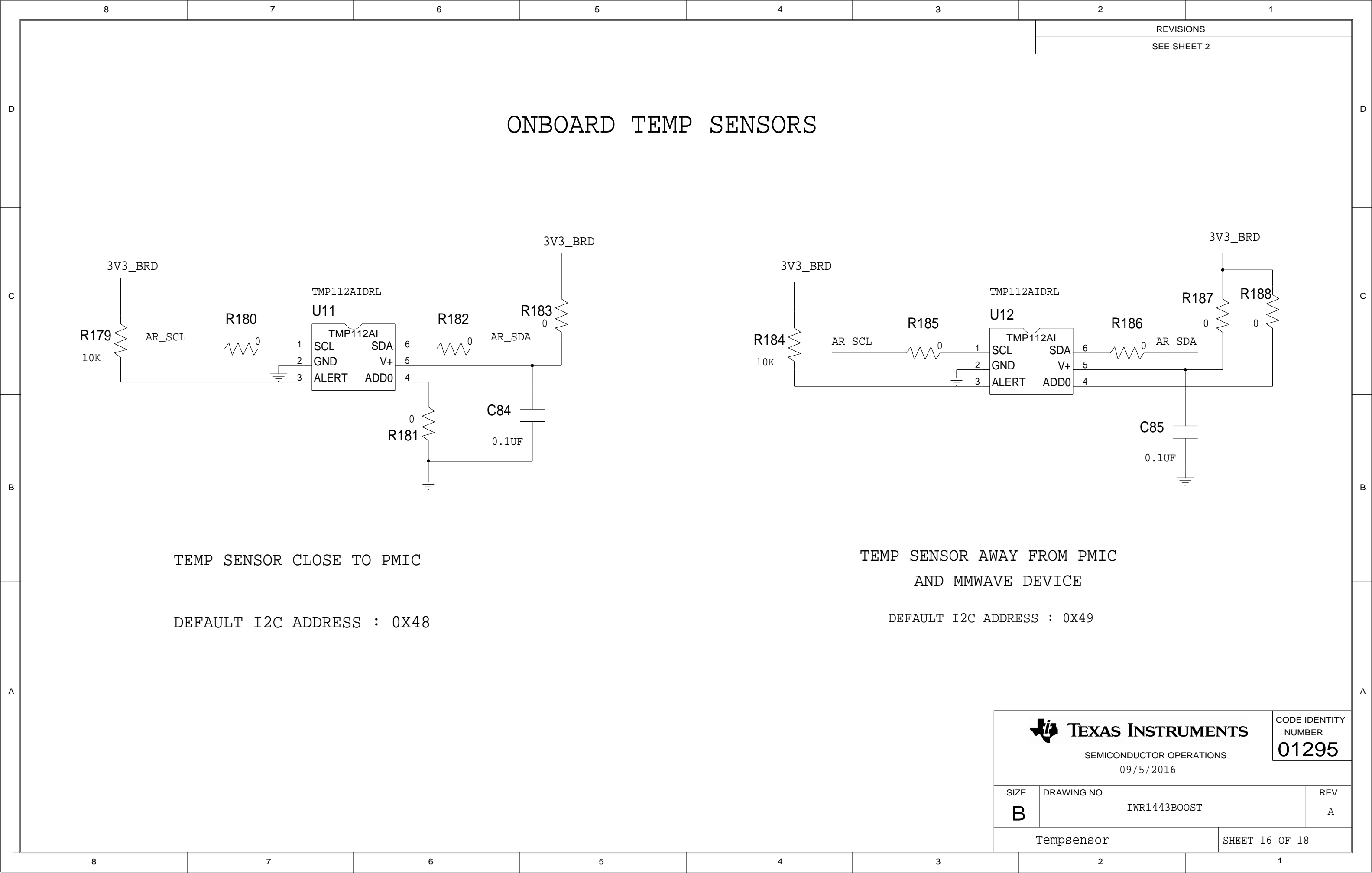
B


IWR1443BOOST


A

SOP selection

SHEET 15 OF 18



8		7		6		5		4		3		2		1	
												REVISIONS			
												SEE SHEET 2			
REVISION HISTORY															
CHANGES IN REV A															
1) ADDED ZENER DIODE ON 5V INPUT TO PROTECT FROM HIGH VOLTAGES.															
2) ADDED ONBOARD TEMPERATURE SENSORS.															
3) ADDED FERRITE BEAD ON 5V SUPPLY.															
4) CHANGED THE PMIC PART TO PG2.2 VERSION															
5) ADDED DUMMY ANTENNAS FOR RX															
6) ADDED PM DUBUG PROVISION FOR LDO BYPASS															
												<div><div><div><div><div></div><div>TEXAS INSTRUMENTS</div></div><div>SEMICONDUCTOR OPERATIONS</div><div>09/5/2016</div></div><div><div>SIZE</div><div>B</div></div><div><div>DRAWING NO.</div><div>IWR1443BOOST</div></div><div><div>REV</div><div>A</div></div></div></div>			
												Revision_History			
												SHEET 17 OF 18			
8		7		6		5		4		3		2		1	

8	7	6	5	4	3	2	1
						REVISIONS	
						SEE SHEET 2	
D							D
		○ FD1	○ FD4				
		○ FD2	○ FD5				
		○ FD3	○ FD6				
C							C
PCB LOGO		PCB LOGO		PCB LOGO		PCB LOGO	
TEXAS INSTRUMENTS		ESD SENSITIVE		FCC DISCLAIMER		LAUNCHPAD COMPATIBLE	
						ROHS EXEMPT	
B	PCB LABELS : THESE LABELS NEED TO BE PUT ON THE ASSEMBLED PCB						B
1) TOP SIDE OF THE PCB ->		IWR1443BOOST REV A					
2) BOTTOM SIDE OF THE PCB ->		IWR1443BOOST REV A					
A	ASSEMBLY NOTES: ASSEMBLIES MUST BE CLEAN AND FREE FROM FLUX AND ALL CONTAMINANTS. USE OF NO CLEAN FLUX IS NOT ACCEPTABLE ASSEMBLIES MUST COMPLY WITH WORKMANSHIP STANDARDS IPC-A-610 CLASS 2, UNLESS OTHERWISE SPECIFIED COMPONENTS MARKED "DNI = TRUE" WILL NOT BE ASSEMBLED						A
						<div><div><div> TEXAS INSTRUMENTS</div><div>SEMICONDUCTOR OPERATIONS</div><div>09/5/2016</div></div><div><div>SIZE</div><div>B</div></div><div>DRAWING NO.</div><div>IWR1443BOOST</div><div>REV</div><div>A</div></div> <div>Hardware</div> <div>SHEET 18 OF 18</div>	
8	7	6	5	4	3	2	1