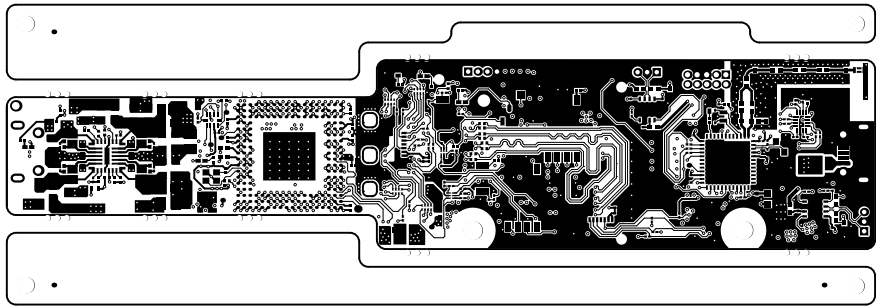
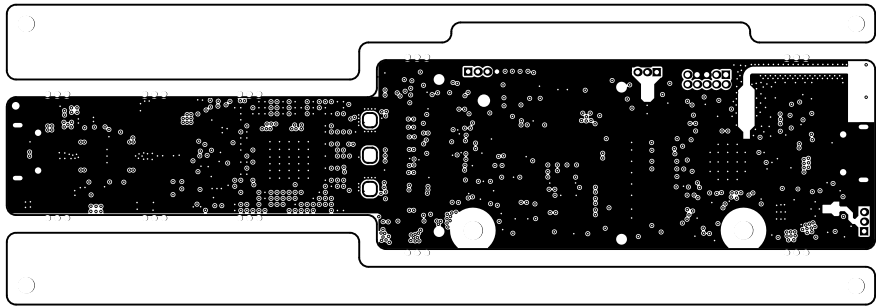


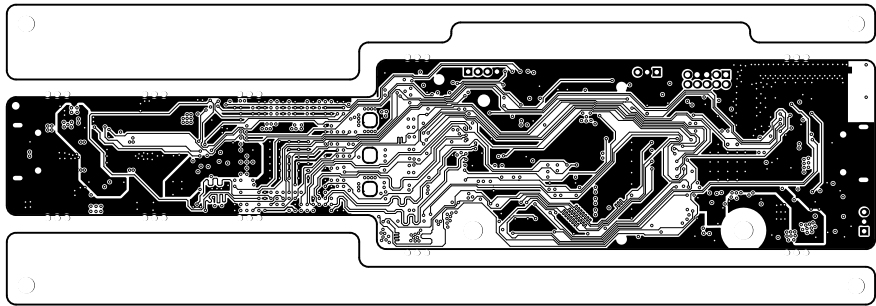
ALL ARTWORK VIEWED FROM TOP SIDE	BOARD #: PROC091	REV: G	SUN REV: 1539
LAYER NAME = Top Solder	TID #: N/A		
PLOT NAME = Top Solder Mask	GENERATED : 02-09-2021 11:27:38		TEXAS INSTRUMENTS



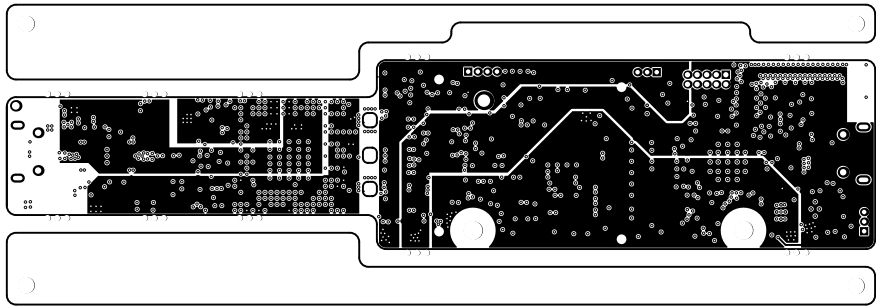
ALL ARTWORK VIEWED FROM TOP SIDE	BOARD #: PROC091	REV: G	SUN REV: 1539
LAYER NAME = Top Layer	TID #: N/A		
PLOT NAME = Top Layer	GENERATED : 02-09-2021 11:27:38		TEXAS INSTRUMENTS



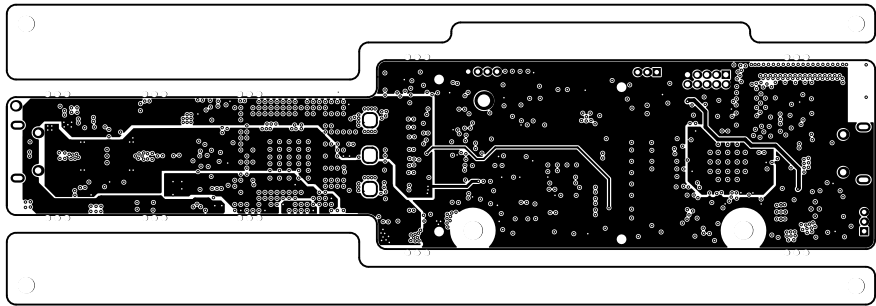
ALL ARTWORK VIEWED FROM TOP SIDE	BOARD #: PROC091	REV: G	SUN REV: 1539
LAYER NAME = GND1	TID #: N/A		
PLOT NAME = Signal Layer 1	GENERATED : 02-09-2021 11:27:38		TEXAS INSTRUMENTS



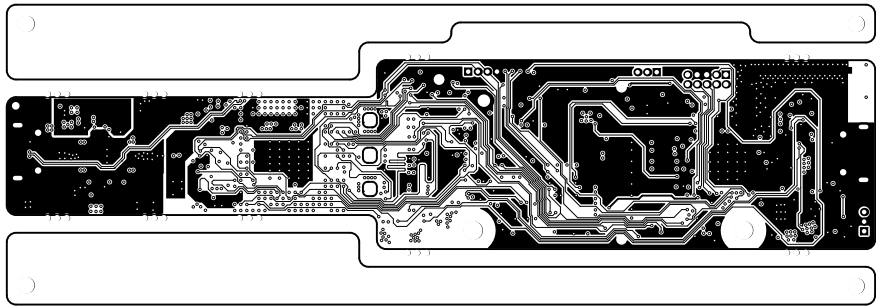
ALL ARTWORK VIEWED FROM TOP SIDE	BOARD #: PROC091	REV: G	SUN REV: 1539
LAYER NAME = Sig1	TID #: N/A		
PLOT NAME = Signal Layer 2	GENERATED : 02-09-2021 11:27:38		TEXAS INSTRUMENTS



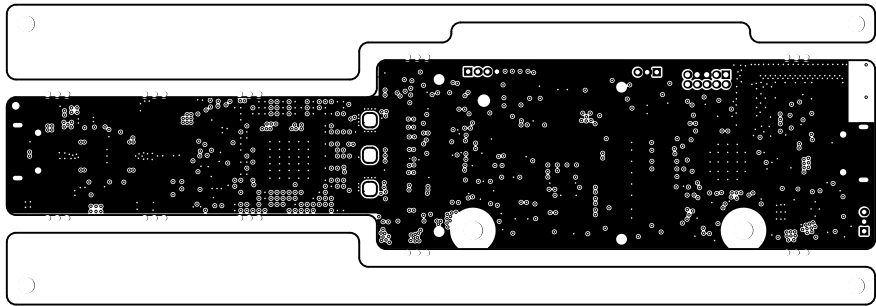
ALL ARTWORK VIEWED FROM TOP SIDE	BOARD #:	PROC091	REV:	G	SUN REV:	1539
LAYER NAME = PWR1	TID #:	N/A				
PLOT NAME = Signal Layer 3	GENERATED	: 02-09-2021 11:27:38			TEXAS INSTRUMENTS	



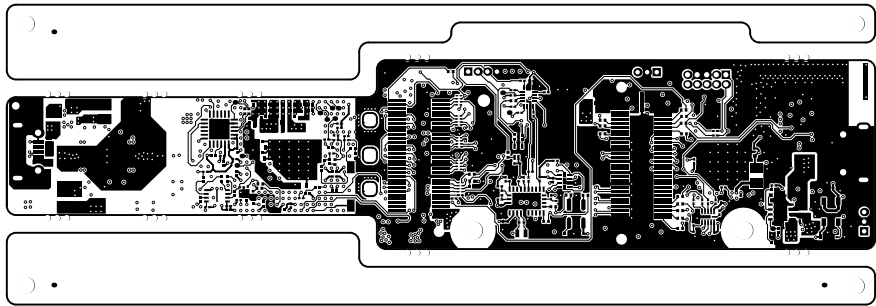
ALL ARTWORK VIEWED FROM TOP SIDE	BOARD #: PROC091	REV: G	SUN REV: 1539
LAYER NAME = PWR2	TID #: N/A		
PLOT NAME = Signal Layer 4	GENERATED : 02-09-2021 11:27:38		TEXAS INSTRUMENTS



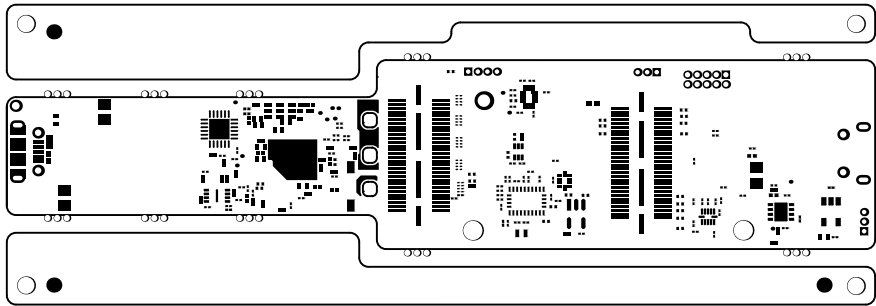
ALL ARTWORK VIEWED FROM TOP SIDE	BOARD #: PROC091	REV: G	SUN REV: 1539
LAYER NAME = Sig2	TID #: N/A		
PLOT NAME = Signal Layer 5	GENERATED : 02-09-2021 11:27:38		TEXAS INSTRUMENTS



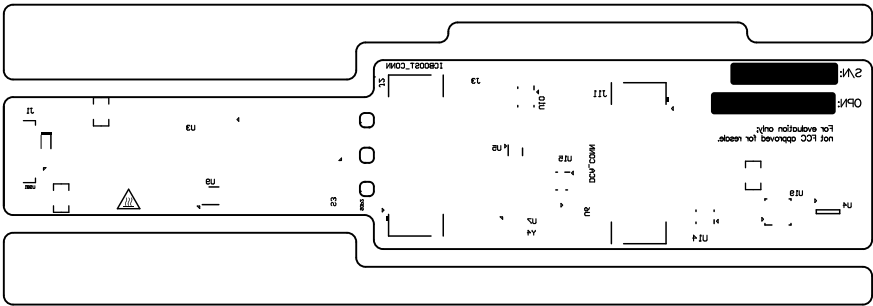
ALL ARTWORK VIEWED FROM TOP SIDE	BOARD #: PROC091	REV: G	SUN REV: 1539
LAYER NAME = GND2	TID #: N/A		
PLOT NAME = Signal Layer 6	GENERATED : 02-09-2021 11:27:39		TEXAS INSTRUMENTS



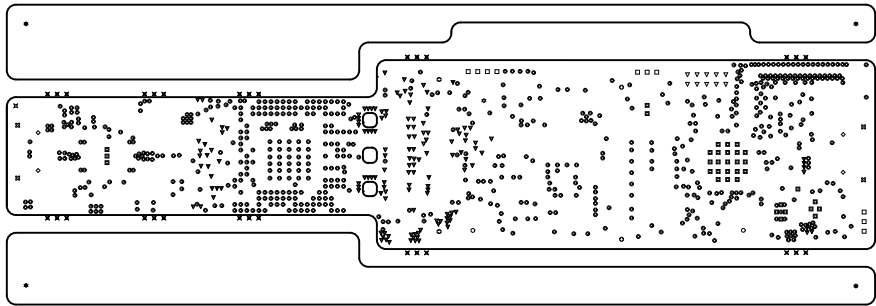
ALL ARTWORK VIEWED FROM TOP SIDE	BOARD #: PROC091	REV: G	SUN REV: 1539
LAYER NAME = Bottom Layer	TID #: N/A		
PLOT NAME = Bottom Layer	GENERATED : 02-09-2021 11:27:39		TEXAS INSTRUMENTS



ALL ARTWORK VIEWED FROM TOP SIDE	BOARD #:	PROC091	REV:	G	SUN REV:	1539
LAYER NAME = Bottom Solder	TID #:	N/A				
PLOT NAME = Bottom Solder Mask	GENERATED	: 02-09-2021 11:27:39			TEXAS INSTRUMENTS	



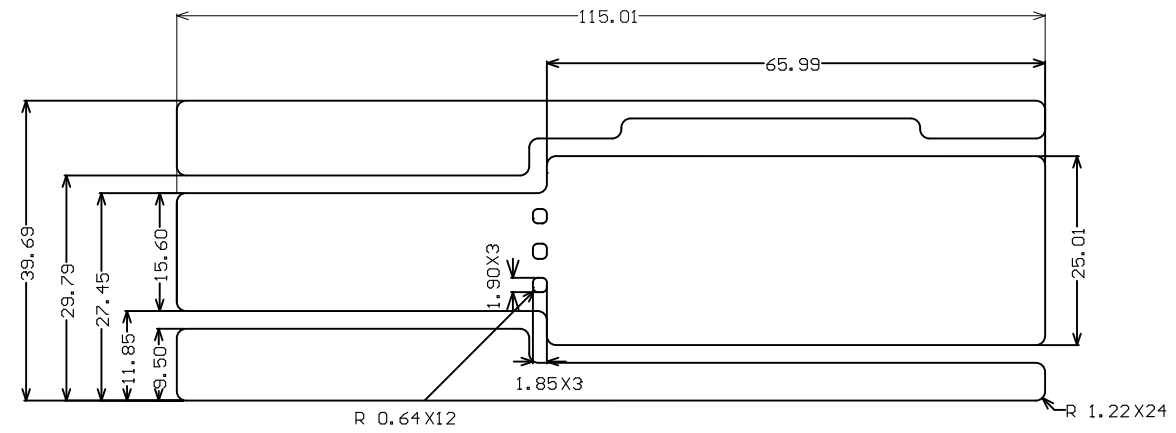
ALL ARTWORK VIEWED FROM TOP SIDE	BOARD #: PROC091	REV: G	SUN REV: 1539
LAYER NAME = Bottom Overlay	TID #: N/A		
PLOT NAME = Bottom Overlay	GENERATED : 02-09-2021 11:27:39	TEXAS INSTRUMENTS	



Symbol	Quantity	Finished Hole Size	Plated	Hole Type	Drill Layer Pair	Hole Tolerance	Hole Length
◼	35	7.87mil	PTH	Round	Top Layer - Bottom Layer		-
○	691	8.00mil	PTH	Round	Top Layer - Bottom Layer		-
▼	142	8.00mil	PTH	Round	Top Layer - Bottom Layer	+/-3.00mil	-
◻	10	23.62mil	PTH	Round	Top Layer - Bottom Layer		-
⊠	4	23.62mil	PTH	Slot	Top Layer - Bottom Layer		51.18mil
▽	10	27.56mil	PTH	Round	Top Layer - Bottom Layer		-
⊠	30	32.00mil	NPTH	Round	Top Layer - Bottom Layer		-
◇	4	33.47mil	PTH	Round	Top Layer - Bottom Layer		-
⊠	1	40.00mil	PTH	Round	Top Layer - Bottom Layer		-
⊠	4	40.16mil	NPTH	Round	Top Layer - Bottom Layer		-
⊠	1	64.96mil	PTH	Round	Top Layer - Bottom Layer		-
⊠	4	88.00mil	NPTH	Round	Top Layer - Bottom Layer	+/-3.00mil	-
○	2	100.00mil	NPTH	Round	Top Layer - Bottom Layer	+/-3.00mil	-
938 Total							

Slot definitions : Routed Path Length = Calculated from tool start centre position to tool end centre position.
Hole Length = Routed Path Length + Tool Size = Slot length as defined in the PCB layout

ALL ARTWORK VIEWED FROM TOP SIDE	BOARD #: PROC091	REV: G	SUN REV: 1539
LAYER NAME = Drill Drawing	TID #: N/A		
PLOT NAME = Drill Drawing	GENERATED : 02-09-2021 11:27:39		TEXAS INSTRUMENTS



ALL ARTWORK VIEWED FROM TOP SIDE	BOARD #: PROC091	REV: G	SUN REV: 1539
LAYER NAME = M2 Board Dimensions	TID #: N/A		
PLOT NAME = Board Dimensions	GENERATED : 02-09-2021 11:27:40		TEXAS INSTRUMENTS