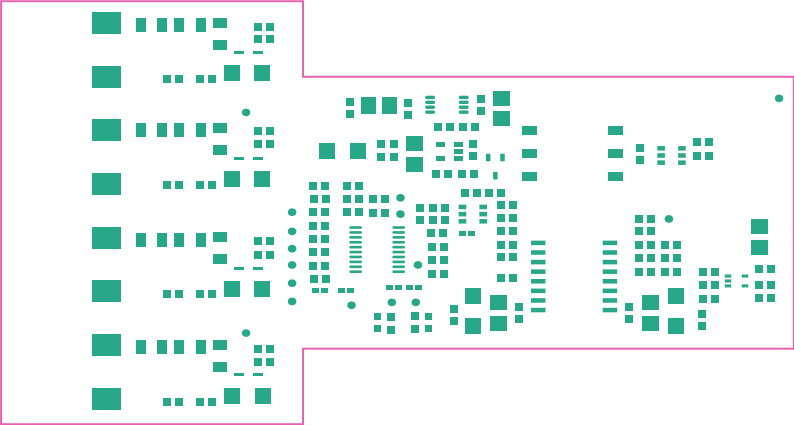
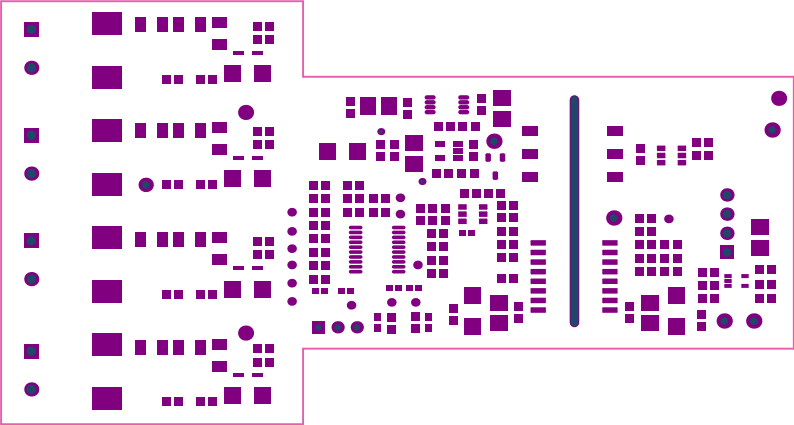


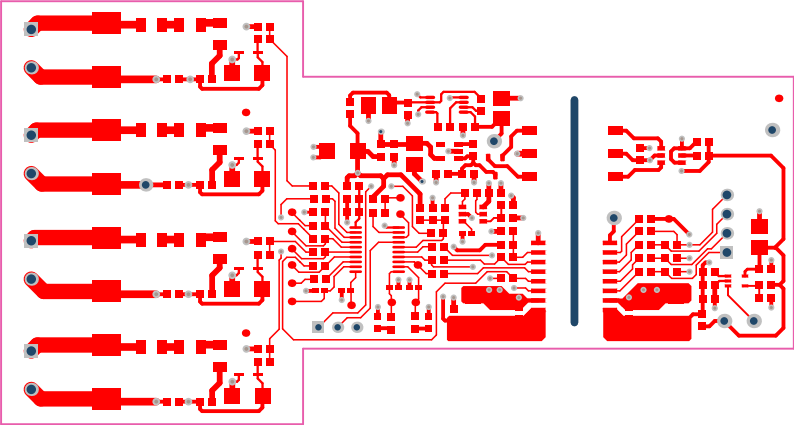
ALL ARTWORK VIEWED FROM TOP SIDE	BOARD #: TIDA-00847_DC	REV: E1	SUN REV: Not In VersionControl
LAYER NAME = Top Overlay	TID #: TIDA-00847_DC		
PLOT NAME = Top Overlay	GENERATED : 3/3/2017 1:40:40 PM	TEXAS INSTRUMENTS	



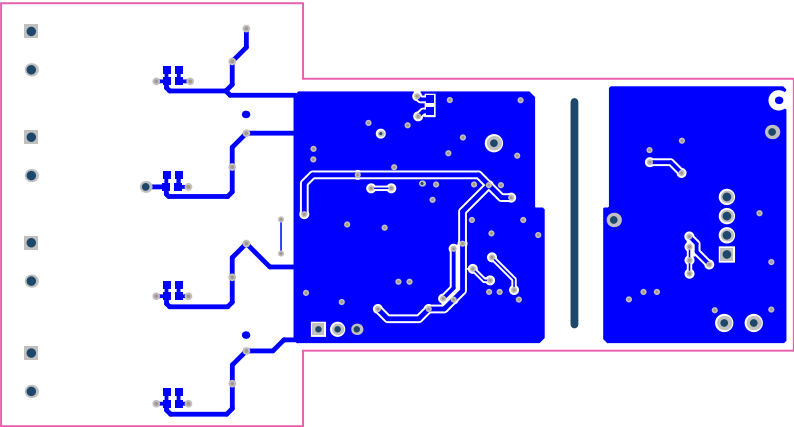
ALL ARTWORK VIEWED FROM TOP SIDE	BOARD #: TIDA-00847_DC	REV: E1	SUN REV: Not In VersionControl
LAYER NAME = Top Paste	TID #: TIDA-00847_DC		
PLOT NAME = Top paste	GENERATED : 3/3/2017 1:40:41 PM	TEXAS INSTRUMENTS	



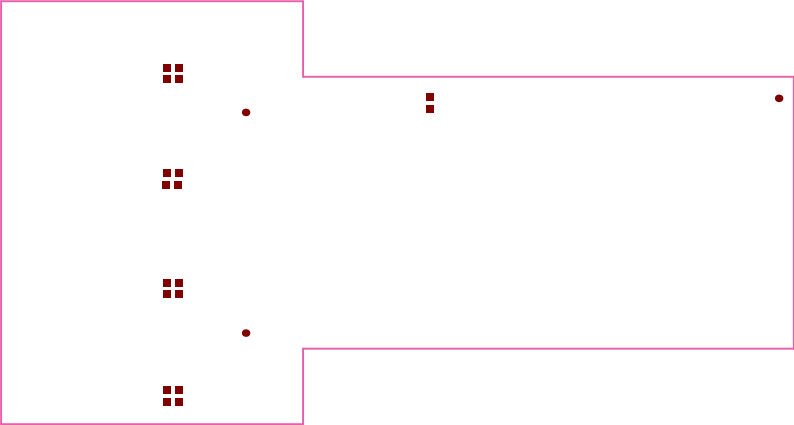
ALL ARTWORK VIEWED FROM TOP SIDE	BOARD #: TIDA-00847_DC	REV: E1	SUN REV: Not In VersionControl
LAYER NAME = Top Solder	TID #: TIDA-00847_DC		
PLOT NAME = Top Solder Mask	GENERATED : 3/3/2017 1:40:42 PM	TEXAS INSTRUMENTS	



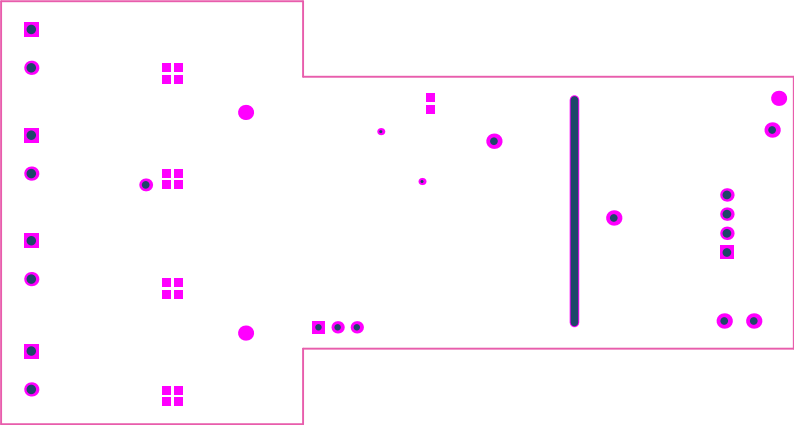
ALL ARTWORK VIEWED FROM TOP SIDE	BOARD #: TIDA-00847_DC	REV: E1	SUN REV: Not In VersionControl
LAYER NAME = Top Layer	TID #: TIDA-00847_DC		
PLOT NAME = Top Layer	GENERATED : 3/3/2017	1:40:43 PM	TEXAS INSTRUMENTS



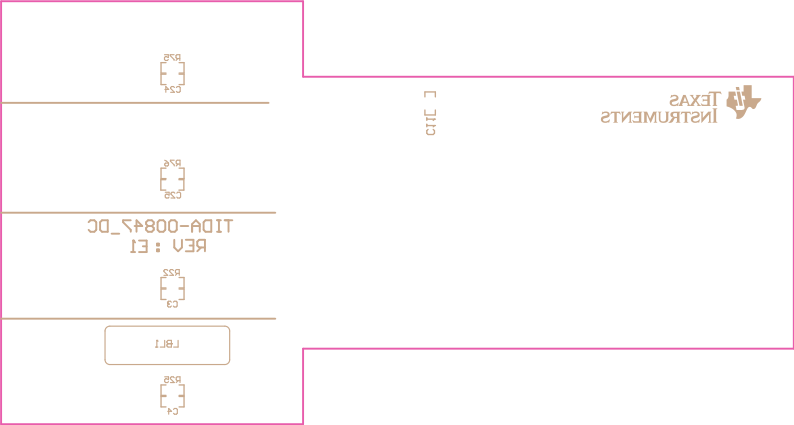
ALL ARTWORK VIEWED FROM TOP SIDE	BOARD #: TIDA-00847_DC	REV: E1	SUN REV: Not In VersionControl
LAYER NAME = Bottom Layer	TID #: TIDA-00847_DC		
PLOT NAME = Bottom Layer	GENERATED : 3/3/2017	1:40:43 PM	TEXAS INSTRUMENTS



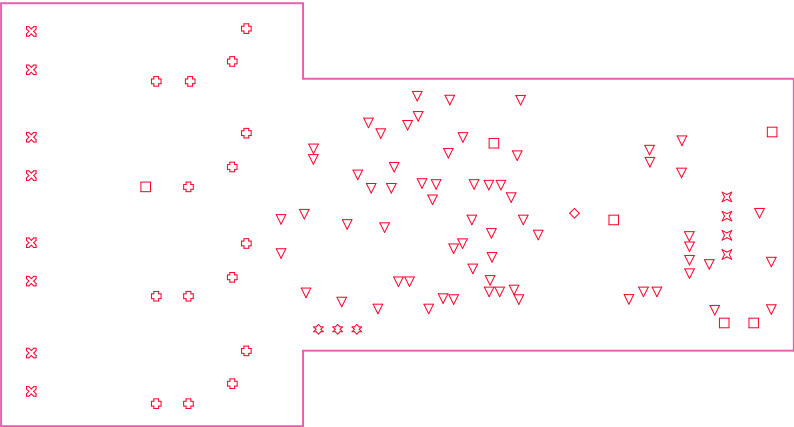
ALL ARTWORK VIEWED FROM TOP SIDE	BOARD #: TIDA-00847_DC	REV: E1	SUN REV: Not In VersionControl
LAYER NAME = Bottom Paste	TID #: TIDA-00847_DC		
PLOT NAME = Bottom Paste	GENERATED : 3/3/2017 1:40:44 PM	TEXAS INSTRUMENTS	



ALL ARTWORK VIEWED FROM TOP SIDE	BOARD #: TIDA-00847_DC	REV: E1	SUN REV: Not In VersionControl
LAYER NAME = Bottom Solder	TID #: TIDA-00847_DC		
PLOT NAME = Bottom Solder Mask	GENERATED : 3/3/2017 1:40:45 PM	TEXAS INSTRUMENTS	



ALL ARTWORK VIEWED FROM TOP SIDE	BOARD #: TIDA-00847_DC	REV: E1	SUN REV: Not In VersionControl
LAYER NAME = Bottom Overlay	TID #: TIDA-00847_DC		
PLOT NAME = Bottom Overlay	GENERATED : 3/3/2017 1:40:45 PM	TEXAS INSTRUMENTS	



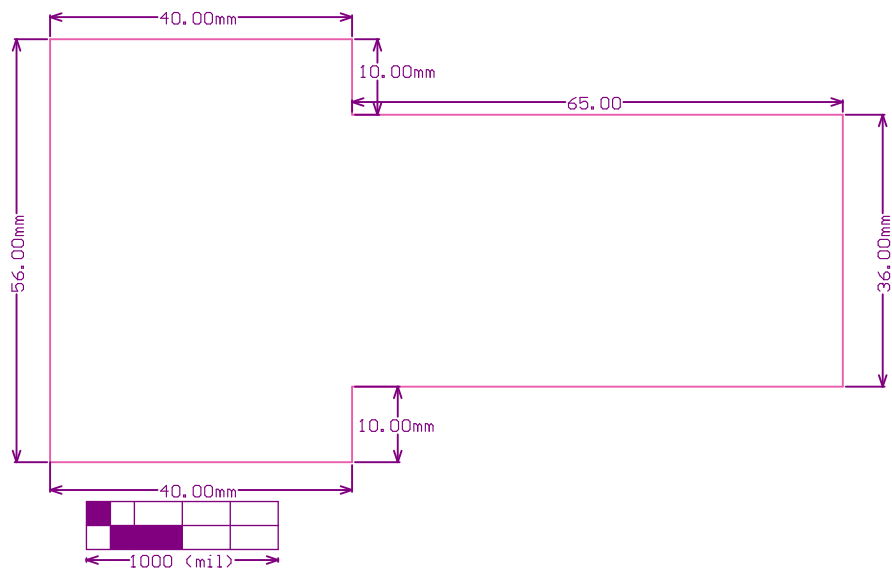
Drill Table

Symbol	Quantity	Finished Hole Size	Plated	Hole Type	Drill Layer Pair	Hole Length
▽	65	16,00mil (0,406mm)	PTH	Round	Top Layer - Bottom Layer	-
⊗	15	20,00mil (0,508mm)	PTH	Round	Top Layer - Bottom Layer	-
⊛	3	33,46mil (0,850mm)	PTH	Round	Top Layer - Bottom Layer	-
□	6	40,00mil (1,016mm)	PTH	Round	Top Layer - Bottom Layer	-
⊠	4	45,28mil (1,150mm)	PTH	Round	Top Layer - Bottom Layer	-
⊞	8	49,37mil (1,254mm)	PTH	Round	Top Layer - Bottom Layer	-
◇	1	40,00mil (1,016mm)	NPTH	Slot	Top Layer - Bottom Layer	1200,00mil (30,480mm)
	102 Total					

Slot definitions : Routed Path Length = Calculated from tool start centre position to tool end centre position,
Hole Length = Routed Path Length + Tool Size = Slot length as defined in the PCB layout

FOR 16MIL DRILL +0/-16MIL
FOR 20MIL DRILL +0/-20MIL
FOR PTH DRILL +/-3MIL
FOR NPTH DRILL +/-2MIL

ALL ARTWORK VIEWED FROM TOP SIDE	BOARD #: TIDA-00847_DC	REV: E1	SUN REV: Not In VersionControl
LAYER NAME = Drill Drawing	TID #: TIDA-00847_DC		
PLOT NAME = Drill Drawing	GENERATED : 3/3/2017	1:40:46 PM	TEXAS INSTRUMENTS



ALL ARTWORK VIEWED FROM TOP SIDE	BOARD #: TIDA-00847_DC	REV: E1	SUN REV: Not In VersionControl
LAYER NAME = M1 Board Outline	TID #: TIDA-00847_DC		
PLOT NAME = Board Dimensions	GENERATED : 3/3/2017 1:40:47 PM	TEXAS INSTRUMENTS	