

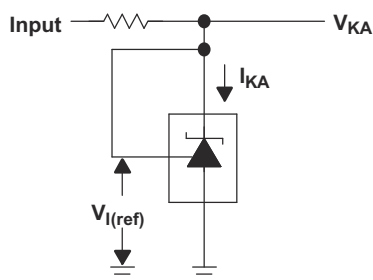
## TL1431-SP V 类，精度可编程参考

### 1 特性

- 符合 QMLV 标准，高达 100krad (Si) RHA，[5962R99620](#)
- 0.4% 初始电压容差
- 输出阻抗典型值 0.2  $\Omega$
- 快速导通：500ns
- 灌电流能力：1mA 至 100mA
- 低基准电流 (REF)
- 可调输出电压： $V_{I(\text{ref})}$  至 36V

### 2 应用

- 可调节电压和电流基准
- 反激式开关模式电源 (SMPS) 中的次级侧调节
- 齐纳二极管替代产品
- 电压监测
- 具有集成基准的比较器
- [命令和数据处理 \(C&DH\)](#)
- [光学成像有效载荷](#)
- [雷达成像有效载荷](#)
- [卫星电力系统 \(EPS\)](#)



简化原理图

### 3 说明

TL1431 是一个可编程精密基准，此基准在车用、商用、和军用温度范围内具有额定的热稳定性。借助于两个外部电阻器，输出电压可在  $V_{I(\text{ref})}$  (大约 2.5V) 和 36V 之间任意调节。该器件具有 0.2  $\Omega$  的输出阻抗典型值。有源输出电路提供一个非常明显的接通特性，这使得此器件成为诸如板载调节、可调电源、和开关电源应用中齐纳二极管和其它类型基准的出色替代产品。

TL1431 可在 -55°C 至 125°C 的整个军用温度范围内运行。

#### 器件信息

器件型号 <sup>(1)</sup>	等级	封装
5962R9962001VPA	飞行等级 RHA 100krad(Si)	8 引脚 JG 重量 0.87g <sup>(2)</sup>
5962-9962001VPA	飞行等级 V 级	
5962R9962001VHA	飞行等级 RHA 100krad(Si)	10 引脚 U 重量 0.2g <sup>(2)</sup>
TL1431U/EM	工程样片 <sup>(3)</sup>	EVM

- 如需了解所有可用封装，请参阅数据表末尾的可订购产品附录。
- 重量误差在  $\pm 10\%$  以内。
- 这些器件仅适用于工程评估。按非合规性流程对其进行了处理（即未进行老化等处理），并且仅在 25°C 的额定温度下进行了测试。这些器件不适用于鉴定、生产、辐射测试或飞行用途。这些零部件无法在 -55°C 至 125°C 的完整 MIL 额定温度范围内或运行寿命中保证其性能。



## Table of Contents

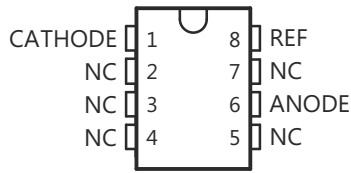
<b>1 特性</b> .....	1	8.4 Device Functional Modes.....	13
<b>2 应用</b> .....	1	<b>9 Application and Implementation</b> .....	14
<b>3 说明</b> .....	1	9.1 Application Information.....	14
<b>4 Revision History</b> .....	2	9.2 Typical Application.....	14
<b>5 Pin Configuration and Functions</b> .....	3	<b>10 Power Supply Recommendations</b> .....	20
<b>6 Specifications</b> .....	4	<b>11 Layout</b> .....	21
6.1 Absolute Maximum Ratings.....	4	11.1 Layout Guidelines.....	21
6.2 ESD Ratings.....	4	11.2 Layout Example.....	21
6.3 Recommended Operating Conditions.....	4	<b>12 Device and Documentation Support</b> .....	22
6.4 Thermal Information.....	4	12.1 Documentation Support.....	22
6.5 Electrical Characteristics.....	5	12.2 接收文档更新通知.....	22
6.6 Typical Characteristics.....	6	12.3 支持资源.....	22
<b>7 Parameter Measurement Information</b> .....	11	12.4 Trademarks.....	22
<b>8 Detailed Description</b> .....	12	12.5 静电放电警告.....	22
8.1 Overview.....	12	12.6 术语表.....	22
8.2 Functional Block Diagram.....	12	<b>13 Mechanical, Packaging, and Orderable Information</b> .....	22
8.3 Feature Description.....	12		

## 4 Revision History

注：以前版本的页码可能与当前版本的页码不同

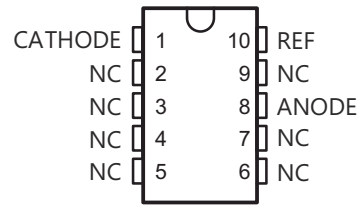
Changes from Revision B (September 2013) to Revision C (November 2020)	Page
• 添加了应用部分、“引脚功能”表、ESD 等级表、热性能信息表、详细说明部分、应用和实施部分、电源相关建议部分、布局部分、器件和文档支持部分，以及机械、封装和可订购信息部分.....	1
• 更新了整个文档中的表格、图和交叉参考的编号格式.....	1
• 更新了“器件信息”表.....	1
• Added U package pinout drawing.....	3

## 5 Pin Configuration and Functions



NC - No internal connection

**图 5-1. JG Package  
8-Pin CDIP  
Top View**



NC - No internal connection

**图 5-2. U Package  
10-Pin CFP  
Top View**

**表 5-1. Pin Functions**

NAME	PIN		I/O	DESCRIPTION
	JG	U		
ANODE	6	—	O	Common pin, normally connected to ground
CATHODE	1	—	I/O	Shunt current/voltage input
REF	8	—	I	Threshold relative to common ground
NC	2,3,4,5,7	2,3,4,5,6,7,9	—	No internal connection

## 6 Specifications

### 6.1 Absolute Maximum Ratings

over operating free-air temperature range (unless otherwise noted)<sup>(1)</sup>

		MIN	MAX	UNIT	
V <sub>KA</sub>	Cathode voltage <sup>(2)</sup>		37	V	
I <sub>KA</sub>	Continuous cathode current	- 100	150	mA	
I <sub>I(ref)</sub>	Reference input current	- 0.05	10	mA	
T <sub>J</sub>	Operating virtual junction temperature		150	°C	
	Lead temperature	1.6 mm (1/16 in) from case for 10 s		260	°C
T <sub>stg</sub>	Storage temperature	- 65	150	°C	

- (1) Stresses beyond those listed under *Absolute Maximum Ratings* may cause permanent damage to the device. These are stress ratings only, which do not imply functional operation of the device at these or any other conditions beyond those indicated under *Recommended Operating Conditions*. Exposure to absolute-maximum-rated conditions for extended periods may affect device reliability.
- (2) All voltage values are with respect to ANODE, unless otherwise noted.

### 6.2 ESD Ratings

		VALUE	UNIT	
V <sub>(ESD)</sub>	Electrostatic discharge	Human-body model (HBM), per ANSI/ESDA/JEDEC JS-001 <sup>(1)</sup>	±2000	V

- (1) JEDEC document JEP155 states that 500-V HBM allows safe manufacturing with a standard ESD control process.

### 6.3 Recommended Operating Conditions

		MIN	MAX	UNIT
V <sub>KA</sub>	Cathode voltage	V <sub>I(ref)</sub>	36	V
I <sub>KA</sub>	Cathode current	1	100	mA
T <sub>A</sub>	Operating free-air temperature	- 55	125	°C

### 6.4 Thermal Information

THERMAL METRIC <sup>(1)</sup>	TL1431-SP		UNIT	
	JG (CDIP)	U (CFP)		
	8 PINS	10 PINS		
R <sub>θJC</sub>	Junction-to-case thermal resistance <sup>(2) (3)</sup>	14.5	19.1	°C/W

- (1) For more information about traditional and new thermal metrics, see the *Semiconductor and IC Package Thermal Metrics* application report, [SPRA953](#).
- (2) Maximum power dissipation is a function of T<sub>J(max)</sub>, R<sub>θJC</sub>, and T<sub>C</sub>. The maximum allowable power dissipation at any allowable case temperature is P<sub>D</sub> = (T<sub>J(max)</sub> - T<sub>C</sub>) / R<sub>θJC</sub>. Operating at the absolute maximum T<sub>J</sub> of 150°C can affect reliability.
- (3) The package thermal impedance is calculated in accordance with MIL-STD-883.

## 6.5 Electrical Characteristics

at specified free-air temperature,  $I_{KA} = 10 \text{ mA}$  (unless otherwise noted)

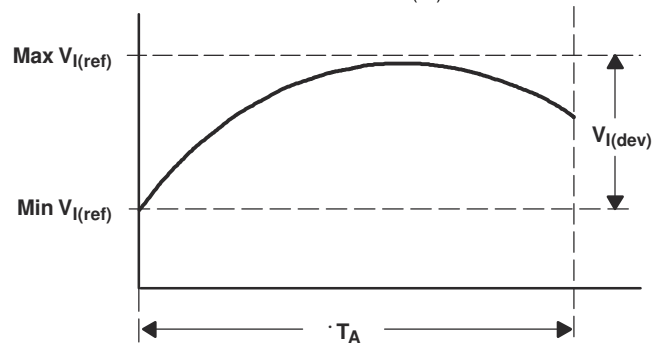
PARAMETER	TEST CONDITIONS	$T_A$ (2)	TEST CIRCUIT	MIN	TYP	MAX	UNIT
$V_{I(\text{ref})}$ Reference input voltage	$V_{KA} = V_{I(\text{ref})}$	25°C	图 7-1	2475	2500	2540	mV
		Full range		2460	2550		
$V_{I(\text{dev})}$ Deviation of reference input voltage over full temperature range(3)	$V_{KA} = V_{I(\text{ref})}$	Full range	图 7-1		17	55(1)	mV
$\frac{\Delta V_{I(\text{ref})}}{\Delta V_{KA}}$ Ratio of change in reference input voltage to the change in cathode voltage	$\Delta V_{KA} = 3 \text{ V to } 36 \text{ V}$	Full range	图 7-2		- 1.1	- 2	mV/V
$I_{I(\text{ref})}$ Reference input current	$R1 = 10 \text{ k}\Omega, R2 = \infty$	25°C	图 7-2		1.5	2.5	$\mu\text{A}$
		Full range			5		
$I_{I(\text{dev})}$ Deviation of reference input current over full temperature range(3)	$R1 = 10 \text{ k}\Omega, R2 = \infty$	Full range	图 7-2		0.5	3(1)	$\mu\text{A}$
$I_{\text{min}}$ Minimum cathode current for regulation	$V_{KA} = V_{I(\text{ref})}$	25°C	图 7-1		0.45	1	mA
$I_{\text{off}}$ Off-state cathode current	$V_{KA} = 36 \text{ V}, V_{I(\text{ref})} = 0$	25°C	图 7-3		0.18	0.5	$\mu\text{A}$
		Full range			2		
$ Z_{KA} $ Output impedance(4)	$V_{KA} = V_{I(\text{ref})}, f \leq 1 \text{ kHz}, I_{KA} = 1 \text{ mA to } 100 \text{ mA}$	25°C	图 7-1		0.2	0.4	$\Omega$

- (1) On products compliant to MIL-PRF-38535, this parameter is not production tested.  
 (2) Full range is  $-55^\circ\text{C}$  to  $125^\circ\text{C}$ .  
 (3) The deviation parameters  $V_{I(\text{dev})}$  and  $I_{I(\text{dev})}$  are defined as the differences between the maximum and minimum values obtained over the rated temperature range. The average full-range temperature coefficient of the reference input voltage  $\alpha_{V_{I(\text{ref})}}$  is defined as:

$$\left| \alpha_{V_{I(\text{ref})}} \right| \left( \frac{\text{ppm}}{^\circ\text{C}} \right) = \frac{\left( \frac{V_{I(\text{dev})}}{V_{I(\text{ref}) \text{ at } 25^\circ\text{C}}} \right) \times 10^6}{T_A}$$

where:

$\Delta T_A$  is the rated operating temperature range of the device.



$\alpha_{V_{I(\text{ref})}}$  is positive or negative, depending on whether minimum  $V_{I(\text{ref})}$  or maximum  $V_{I(\text{ref})}$ , respectively, occurs at the lower temperature.

- (4) The output impedance is defined as:  $|Z_{KA}| = \frac{\Delta V_{KA}}{\Delta I_{KA}}$

When the device is operating with two external resistors (see 图 7-2), the total dynamic impedance of the circuit is given by:  $|z'| = \frac{\Delta V}{\Delta I}$ ,

which is approximately equal to  $|Z_{KA}| \left( 1 + \frac{R1}{R2} \right)$ .

## 6.6 Typical Characteristics

Data at high and low temperatures are applicable only within the recommended operating free-air temperature ranges of the various devices.

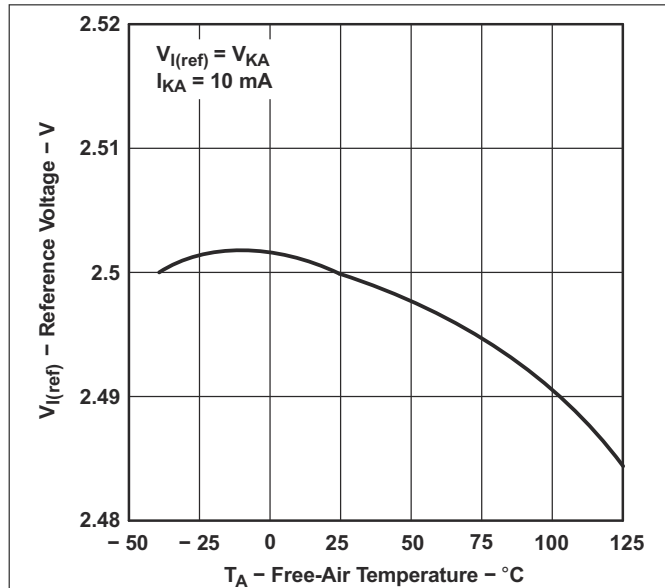


图 6-1. Reference Voltage vs Free-Air Temperature

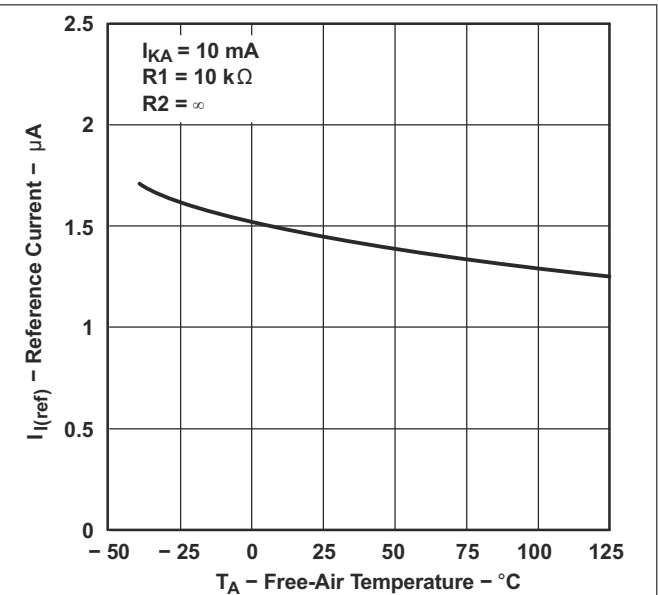


图 6-2. Reference Current vs Free-Air Temperature

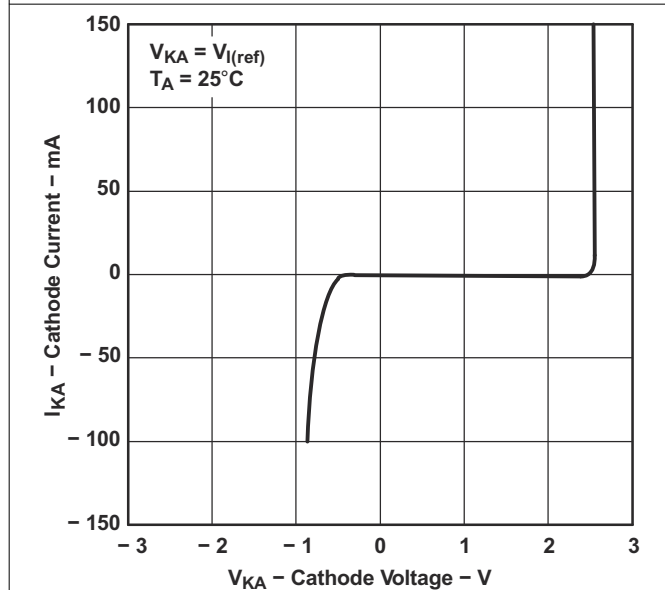


图 6-3. Cathode Current vs Cathode Voltage

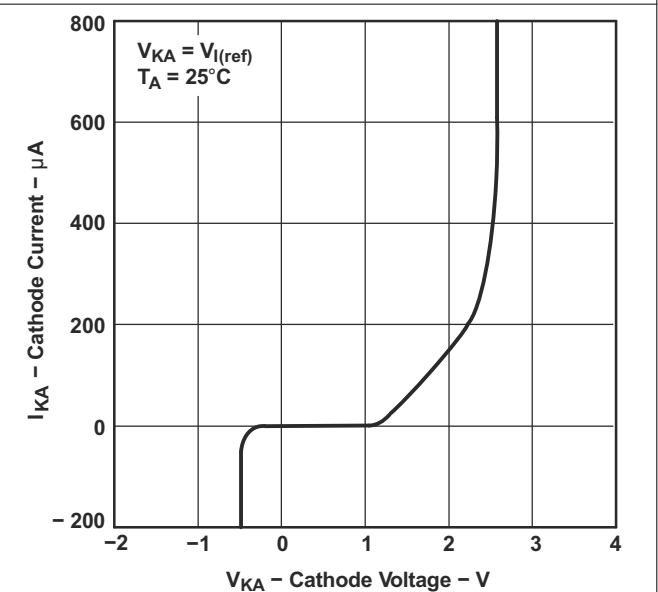
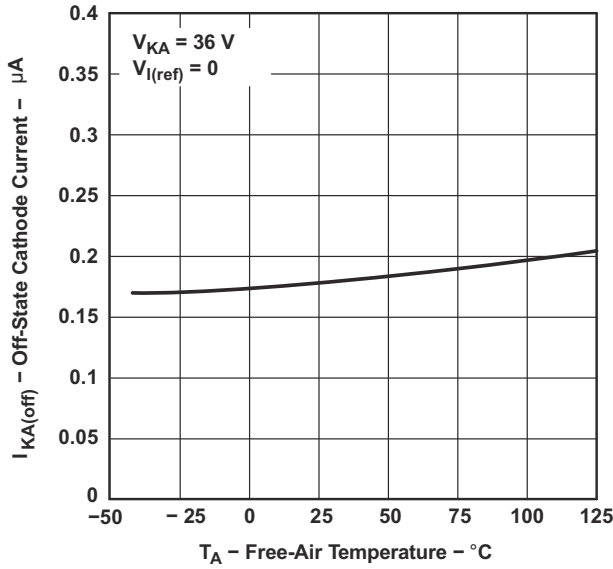
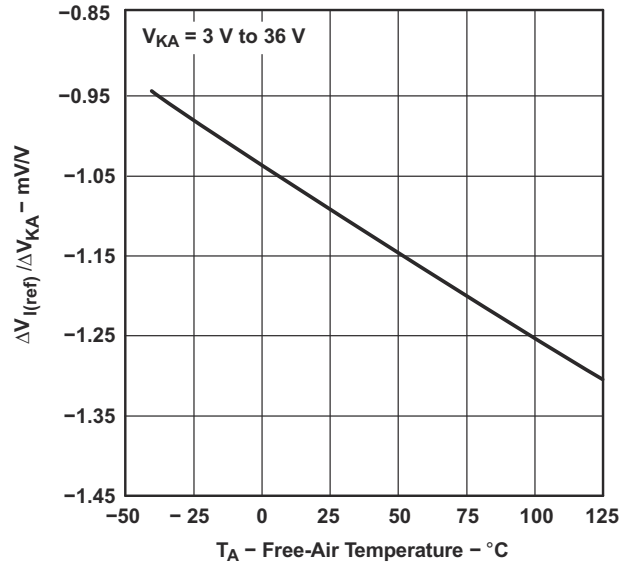


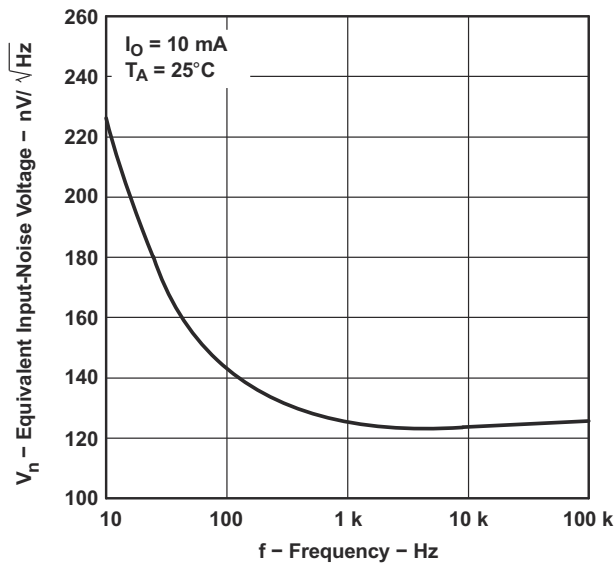
图 6-4. Cathode Current vs Cathode Voltage



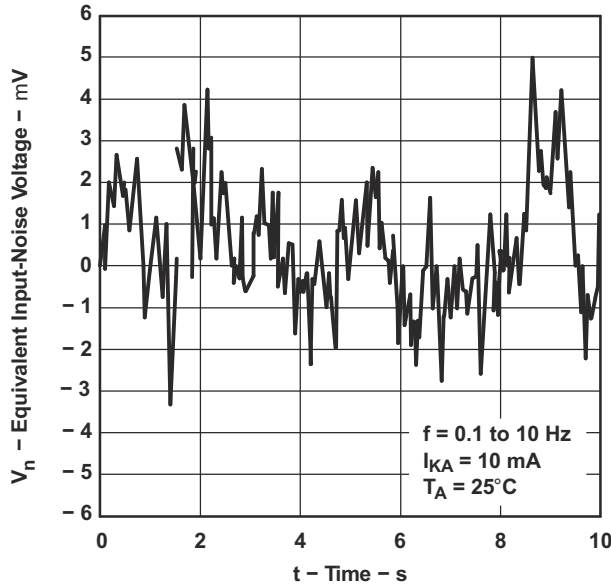

**6-5. Off-State Cathode Current vs Free-Air Temperature**



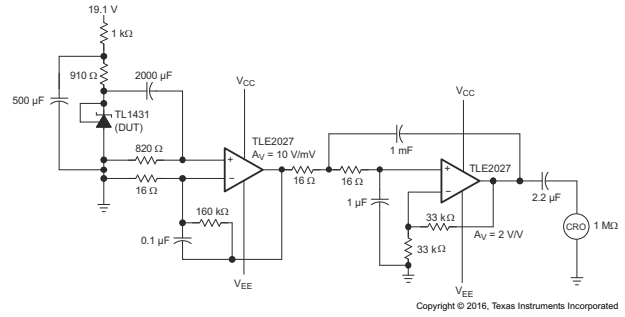

**6-6. Ratio of Delta Reference Voltage to Delta Cathode Voltage vs Free-Air Temperature**



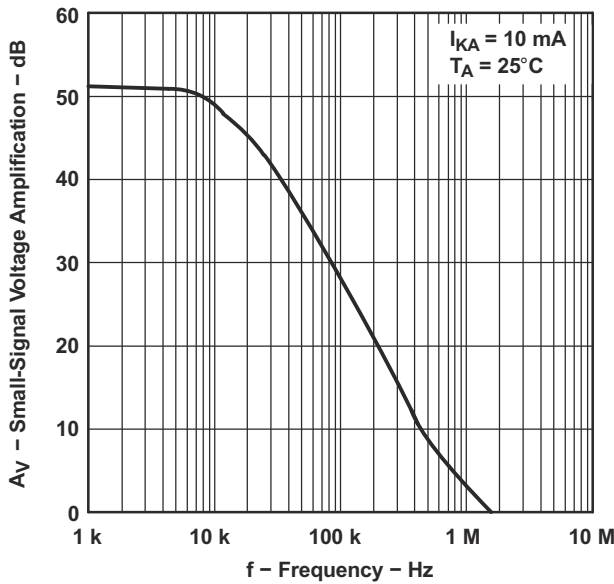

**6-7. Equivalent Input-Noise Voltage vs Frequency**



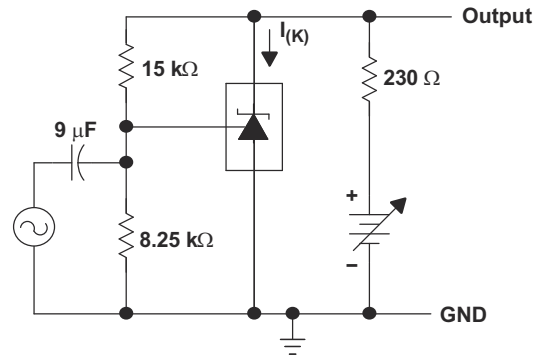
**图 6-8. Equivalent Input-Noise Voltage Over a 10-s Period**



**图 6-9. Test Circuit for 0.1-Hz to 10-Hz Equivalent Input-Noise Voltage**



**图 6-10. Small-Signal Voltage Amplification vs Frequency**



**图 6-11. Test Circuit for Voltage Amplification**



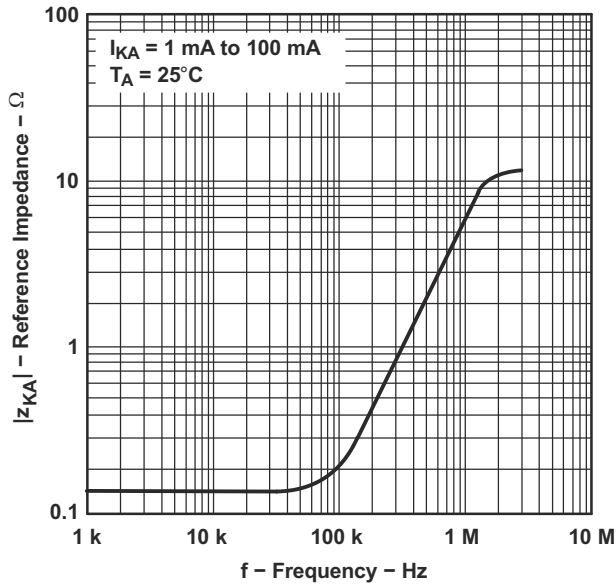


图 6-12. Reference Impedance vs Frequency

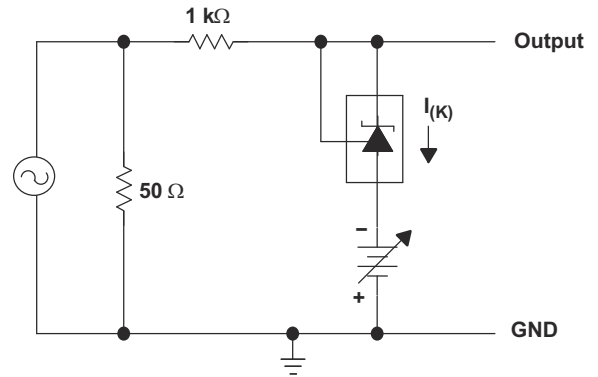


图 6-13. Test Circuit for Reference Impedance

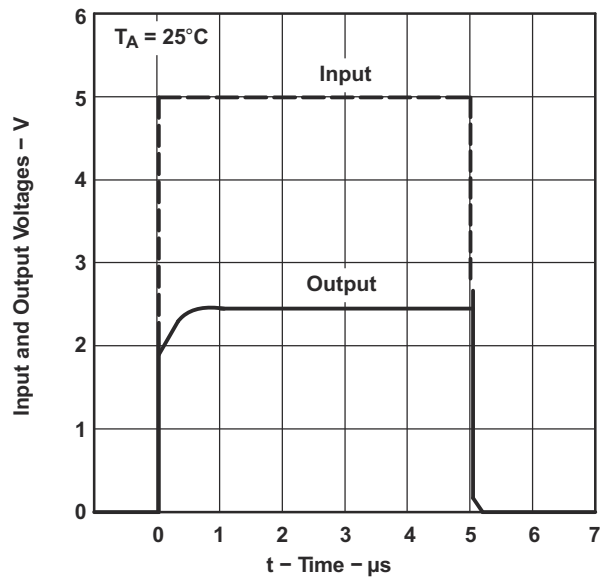


图 6-14. Pulse Response

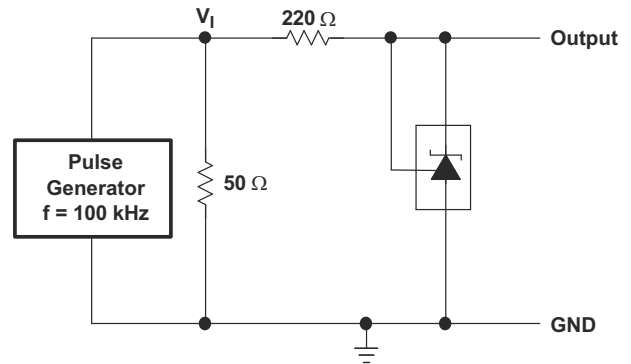
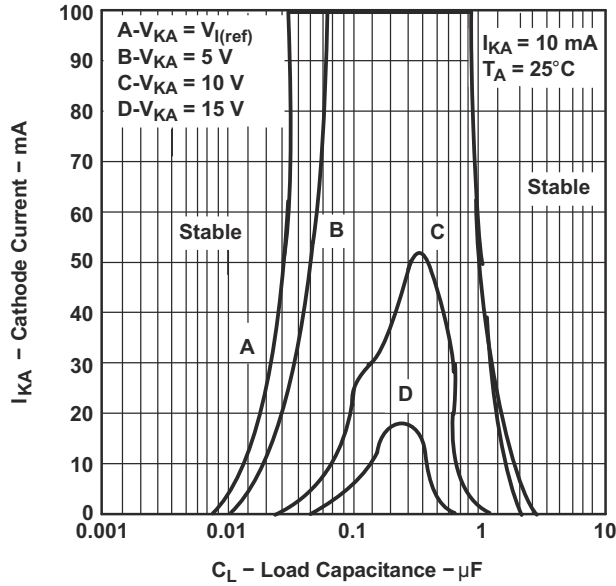
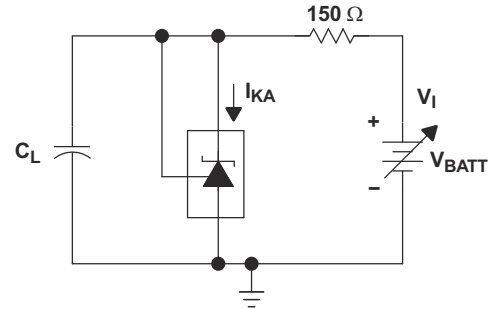


图 6-15. Test Circuit for Pulse Response

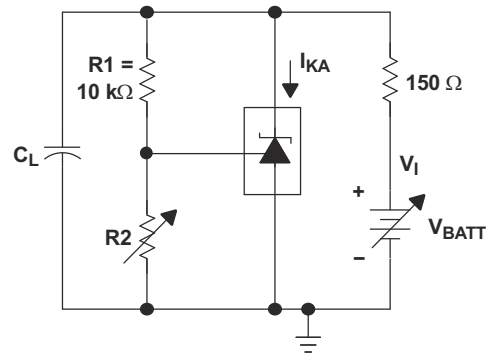


A. The areas under the curves represent conditions that may cause the device to oscillate. For curves B, C, and D,  $R_2$  and  $V_+$  are adjusted to establish the initial  $V_{KA}$  and  $I_{KA}$  conditions, with  $C_L = 0$ .  $V_{BATT}$  and  $C_L$  then are adjusted to determine the ranges of stability.

**图 6-16. Stability Boundary Conditions**



Test Circuit for Curve A



Test Circuit for Curves B, C, and D

**图 6-17. Test Circuits for Curves A Through D**

## 7 Parameter Measurement Information

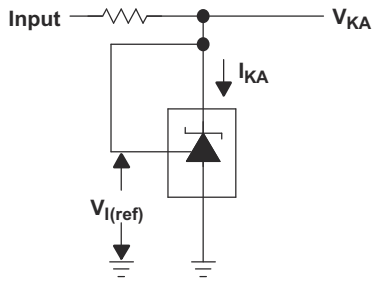


图 7-1. Test Circuit for  $V_{(KA)} = V_{ref}$

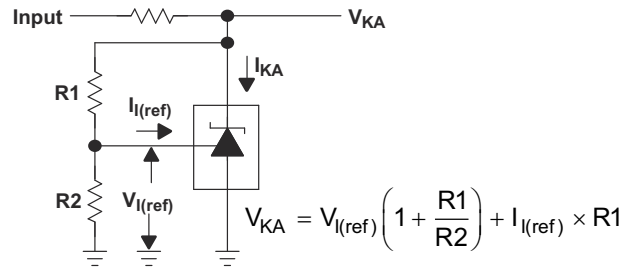


图 7-2. Test Circuit for  $V_{(KA)} > V_{ref}$

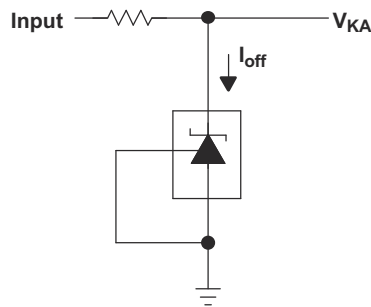


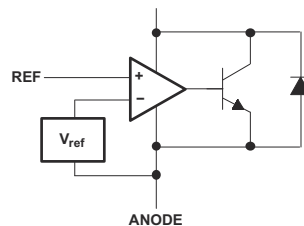
图 7-3. Test Circuit for  $I_{off}$

## 8 Detailed Description

### 8.1 Overview

The TL1431 device has proven ubiquity and versatility across a wide range of applications, ranging from power to signal path. This is due to its key components containing an accurate voltage reference and op amp, which are very fundamental analog building blocks. TL1431 is used in conjunction with its key components to behave as a single voltage reference, error amplifier, voltage clamp, or comparator with integrated reference. TL1431 can be operated and adjusted to cathode voltages from 2.5 V to 36 V, making this part optimum for a wide range of end equipments in aerospace, industrial, auto, telecom, and computing. In order for this device to behave as a shunt regulator or error amplifier,  $> 1$  mA ( $I_{min(max)}$ ) must be supplied in to the cathode pin. Under this condition, feedback can be applied from the Cathode and Ref pins to create a replica of the internal reference voltage. The TL1431-SP devices are characterized for operation from  $-55^{\circ}\text{C}$  to  $125^{\circ}\text{C}$ .

### 8.2 Functional Block Diagram



### 8.3 Feature Description

TL1431 consists of an internal reference and amplifier that outputs a sink current base on the difference between the reference pin and the virtual internal pin. The sink current is produced by the internal Darlington pair, shown in Detailed Schematic. A Darlington pair is used in order for this device to be able to sink a maximum current of 100 mA. When operated with enough voltage headroom ( $\geq 2.5$  V) and cathode current ( $I_{KA}$ ), TL1431 forces the reference pin to 2.5 V. However, the reference pin can not be left floating, as it needs  $I_{REF} \geq 5$   $\mu\text{A}$  (see [Electrical Characteristics - TL1431-SP](#)). This is because the reference pin is driven into an npn, which needs base current to operate properly. When feedback is applied from the cathode and reference pins, TL1431 behaves as a Zener diode, regulating to a constant voltage dependent on current being supplied into the cathode. This is due to the internal amplifier and reference entering the proper operating regions. The same amount of current needed in the above feedback situation must be applied to this device in open loop, servo, or error amplifying implementations in order for it to be in the proper linear region giving TL1431 enough gain. Unlike many linear regulators, TL1431 is internally compensated to be stable without an output capacitor between the cathode and anode. However, if desired an output capacitor can be used as a guide to assist in choosing the correct capacitor to maintain stability.

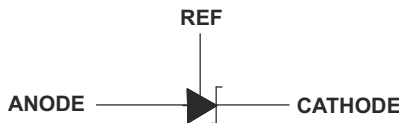


图 8-1. Symbol

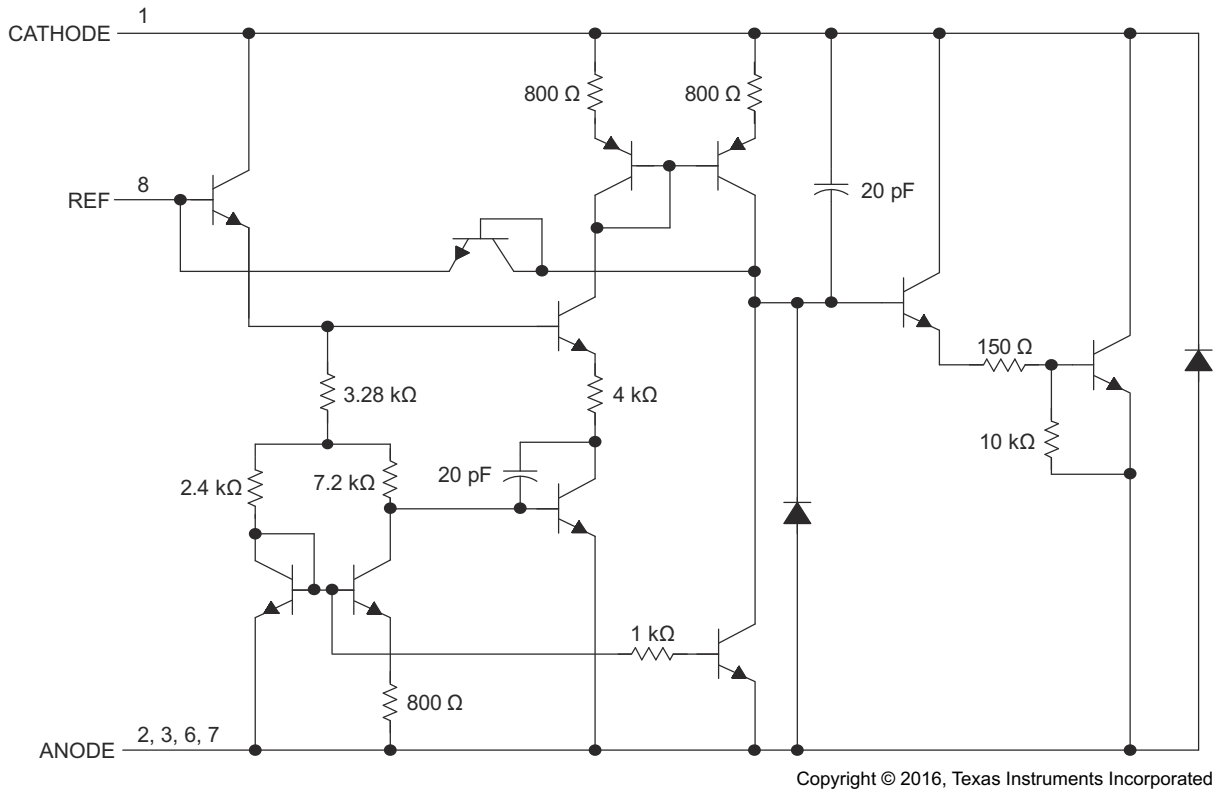


图 8-2. Equivalent Schematic

## 8.4 Device Functional Modes

### 8.4.1 Open Loop (Comparator)

When the cathode or output voltage or current of TL1431 is not being fed back to the reference or input pin in any form, this device is operating in open loop. With proper cathode current ( $I_{KA}$ ) applied to this device, TL1431 has the characteristics shown in 图 9-1. With such high gain in this configuration, TL1431 is typically used as a comparator. With the reference integrated makes TL1431 the preferred choice when users are trying to monitor a certain level of a single signal.

### 8.4.2 Closed Loop

When the cathode or output voltage or current of TL1431 is being fed back to the reference or input pin in any form, this device is operating in closed loop. The majority of applications involving TL1431 use it in this manner to regulate a fixed voltage or current. The feedback enables this device to behave as an error amplifier, computing a portion of the output voltage and adjusting it to maintain the desired regulation. This is done by relating the output voltage back to the reference pin in a manner to make it equal to the internal reference voltage, which can be accomplished through resistive or direct feedback.

## 9 Application and Implementation

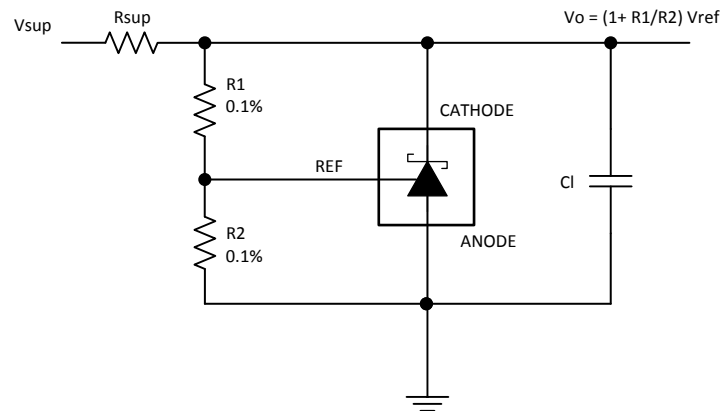
### 备注

以下应用部分的信息不属于 TI 组件规范，TI 不担保其准确性和完整性。客户应负责确定 TI 组件是否适用于其应用。客户应验证并测试其设计，以确保系统功能。

### 9.1 Application Information

As the TL1431 device has many applications and setups, there are many situations that this datasheet cannot characterize in detail. The linked application notes help the designer make the best choices when using this part. [Understanding Stability Boundary Conditions Charts in TL431, TL432 Data Sheet](#) (SLVA482) provides a deeper understanding of this devices stability characteristics and aid the user in making the right choices when choosing a load capacitor. [Setting the Shunt Voltage on an Adjustable Shunt Regulator](#) (SLVA445) assists designers in setting the shunt voltage to achieve optimum accuracy for this device.

### 9.2 Typical Application



Copyright © 2016, Texas Instruments Incorporated

图 9-1. Comparator Application Schematic

#### 9.2.1 Design Requirements

For this design example, use the parameters listed in 表 9-1 as the input parameters.

表 9-1. Design Parameters

PARAMETER	VALUE
Reference initial accuracy	0.4%
Supply voltage	48 V
Cathode current ( $I_K$ )	50 $\mu$ A
Output voltage level	2.5 V to 36 V
Load capacitance	1 nF
Feedback resistor values and accuracy (R1 and R2)	10 k $\Omega$

#### 9.2.2 Detailed Design Procedure

When using TL1431 as a shunt regulator, determine the following:

- Input voltage range
- Temperature range
- Total accuracy
- Cathode current

- Reference initial accuracy
- Output capacitance

### 9.2.3 Programming Output/Cathode Voltage

To program the cathode voltage to a regulated voltage a resistive bridge must be shunted between the cathode and anode pins with the mid point tied to the reference pin. This can be seen in [图 9-1](#), with R1 and R2 being the resistive bridge. The cathode/output voltage in the shunt regulator configuration can be approximated by the equation shown in [图 9-1](#). The cathode voltage can be more accurately determined by taking in to account the cathode current with [方程式 1](#).

$$V_o = (1 + R1 / R2) \times V_{REF} - I_{REF} \times R1 \quad (1)$$

For this equation to be valid, TL1431 must be fully biased so that it has enough open loop gain to mitigate any gain error. This can be done by meeting the  $I_{min}$  specification denoted in [节 6.5](#).

### 9.2.4 Total Accuracy

When programming the output above unity gain ( $V_{KA}=V_{REF}$ ), TL1431 is susceptible to other errors that may effect the overall accuracy beyond  $V_{REF}$ . These errors include:

- R1 and R2 accuracies
- $V_{I(dev)}$  - Change in reference voltage over temperature
- $\Delta V_{REF} / \Delta V_{KA}$  - Change in reference voltage to the change in cathode voltage
- $|z_{KA}|$  - Dynamic impedance, causing a change in cathode voltage with cathode current

Worst case cathode voltage can be determined taking all of the variables in to account.

### 9.2.5 Stability

Though TL1431 is stable with no capacitive load, the device that receives the shunt regulator's output voltage could present a capacitive load that is within the TL1431 region of stability, shown in [图 6-16](#). Also, designers may use capacitive loads to improve the transient response or for power supply decoupling. When using additional capacitance between Cathode and Anode, refer to [图 6-16](#).

### 9.2.6 Start-up Time

As shown in [图 9-2](#), TL1431 has a fast response up to approximately 2 V and then slowly charges to its programmed value. This is due to the compensation capacitance the TL1431 has to meet its stability criteria. Despite the secondary delay, TL1431 still has a fast response suitable for many clamp applications.

### 9.2.7 Application Curve

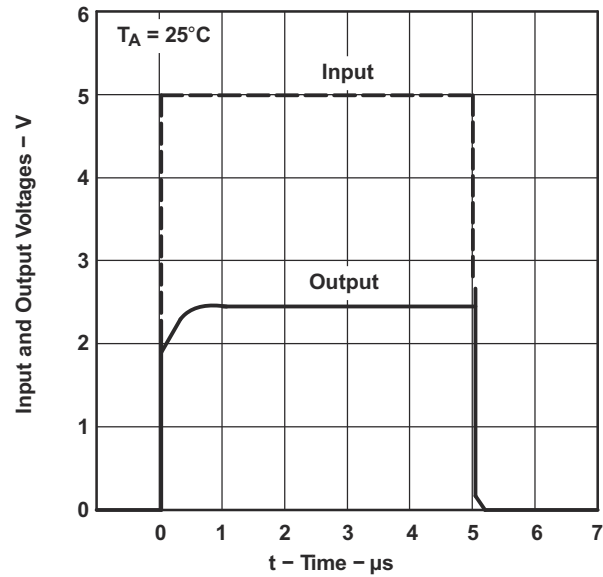


图 9-2. TL1431 Start-up Response

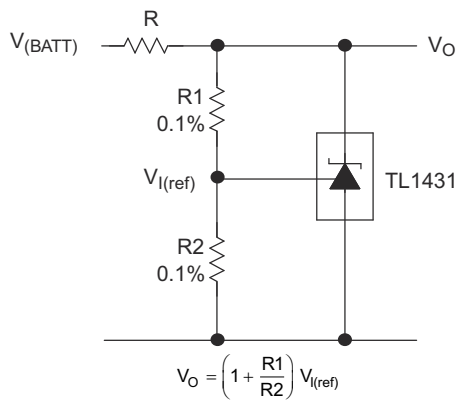


### 9.2.8 System Examples

表 9-2 lists example circuits of the TL1431.

表 9-2. Table of Example Circuits

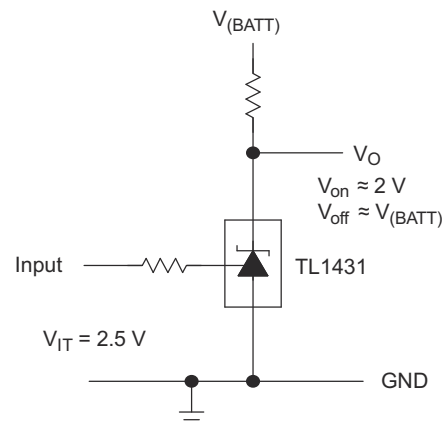
APPLICATION	FIGURE
Shunt regulator	图 9-3
Single-supply comparator with temperature-compensated threshold	图 9-4
Precision high-current series regulator	图 9-5
Output control of a three-terminal fixed regulator	图 9-6
Higher-current shunt regulator	图 9-7
Crowbar	图 9-8
Precision 5-V, 1.5-A, 0.5% regulator	图 9-9
5-V precision regulator	图 9-10
PWM converter with 0.5% reference	图 9-11
Voltage monitor	图 9-12
Delay timer	图 9-13
Precision current limiter	图 9-14
Precision constant-current sink	图 9-15



Copyright © 2016, Texas Instruments Incorporated

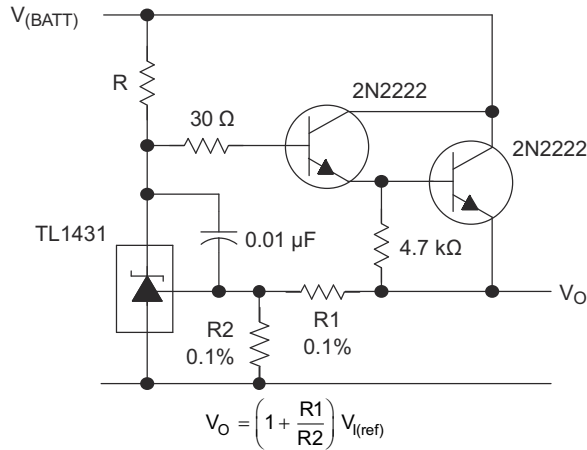
R must provide cathode current  $\geq 1$  mA to the TL1431 at minimum  $V_{(BATT)}$ .

图 9-3. Shunt Regulator



Copyright © 2016, Texas Instruments Incorporated

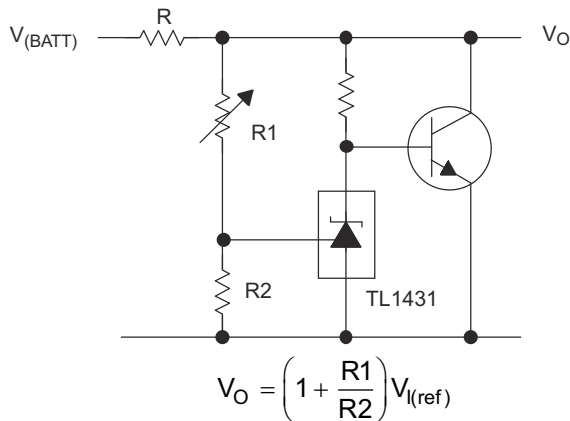
图 9-4. Single-Supply Comparator With Temperature-Compensated Threshold



Copyright © 2016, Texas Instruments Incorporated

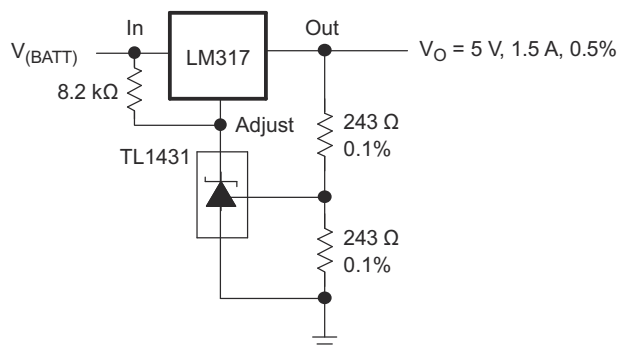
R must provide cathode current  $\geq 1$  mA to the TL1431 at minimum  $V_{(BATT)}$ .

**图 9-5. Precision High-Current Series Regulator**



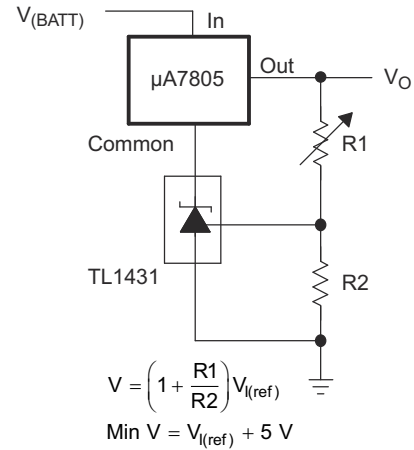
Copyright © 2016, Texas Instruments Incorporated

**图 9-7. Higher-Current Shunt Regulator**



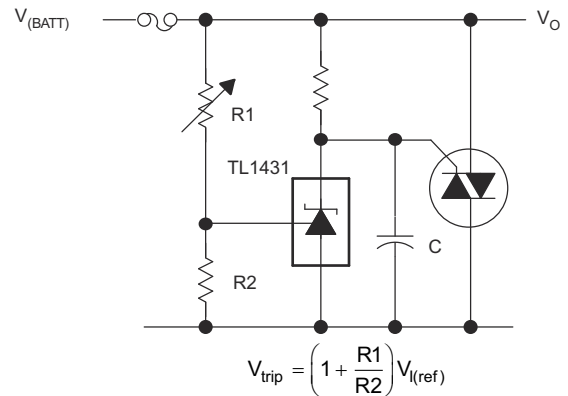
Copyright © 2016, Texas Instruments Incorporated

**图 9-9. Precision 5-V, 1.5-A, 0.5% Regulator**



Copyright © 2016, Texas Instruments Incorporated

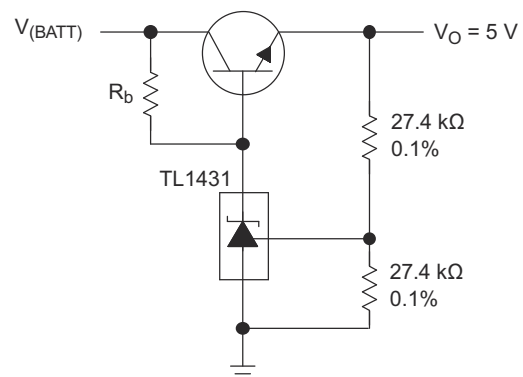
**图 9-6. Output Control of a Three-Terminal Fixed Regulator**



Copyright © 2016, Texas Instruments Incorporated

See the stability boundary conditions in [图 6-16](#) to determine allowable values for C.

**图 9-8. Crowbar**



Copyright © 2016, Texas Instruments Incorporated

$R_b$  must provide cathode current  $\geq 1$  mA to the TL1431.

**图 9-10. 5-V Precision Regulator**

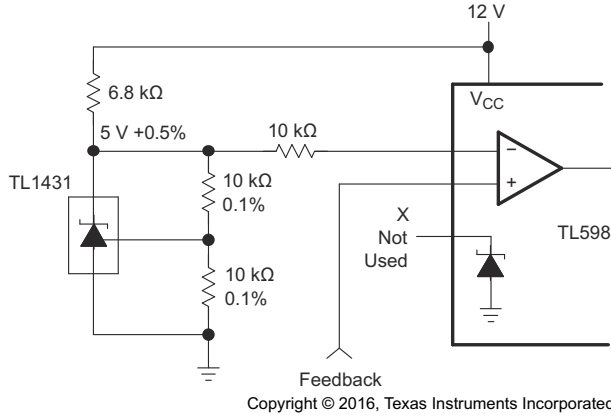
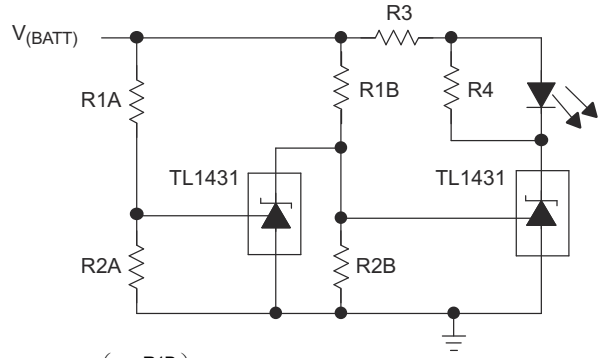


图 9-11. PWM Converter With 0.5% Reference



$$\text{Low Limit} = \left(1 + \frac{R1B}{R2B}\right) V_{I(\text{ref})}$$

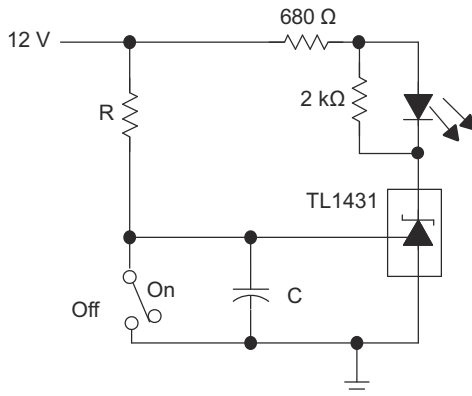
$$\text{High Limit} = \left(1 + \frac{R1A}{R2A}\right) V_{I(\text{ref})}$$

LED on When  
Low Limit < V<sub>(BATT)</sub> < High Limit

Copyright © 2016, Texas Instruments Incorporated

Select R3 and R4 to provide the desired LED intensity and cathode current ≥ 1 mA to the TL1431.

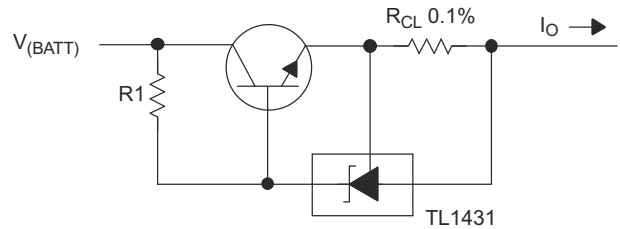
图 9-12. Voltage Monitor



$$\text{Delay} = R \times C \times I_I \frac{12 \text{ V}}{(12 \text{ V}) - V_{I(\text{ref})}}$$

Copyright © 2016, Texas Instruments Incorporated

图 9-13. Delay Timer

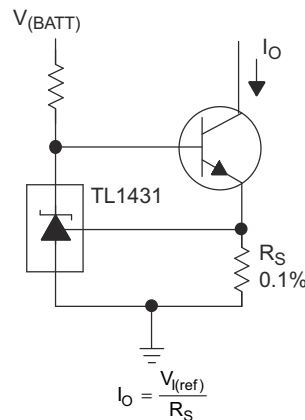


$$I_O = \frac{V_{I(\text{ref})}}{R_{CL}} + I_{KA}$$

$$R1 = \frac{V_{(BATT)}}{\left(\frac{I_O}{h_{FE}}\right) + I_{KA}}$$

Copyright © 2016, Texas Instruments Incorporated

图 9-14. Precision Current Limiter



$$I_O = \frac{V_{I(\text{ref})}}{R_S}$$

Copyright © 2016, Texas Instruments Incorporated

图 9-15. Precision Constant-Current Sink

## 10 Power Supply Recommendations

When using TL1431 as a linear regulator to supply a load, designers typically use a bypass capacitor on the output/cathode pin. When doing this, be sure that the capacitance is within the stability criteria shown in [Figure 6-16](#). To not exceed the maximum cathode current, ensure the supply voltage is current limited. Also, be sure to limit the current being driven into the Ref pin, as not to exceed its absolute maximum rating. For applications shunting high currents, pay attention to the cathode and anode trace lengths, adjusting the width of the traces to have the proper current density.

## 11 Layout

### 11.1 Layout Guidelines

Bypass capacitors must be placed as close to the part as possible. Current-carrying traces need to have widths appropriate for the amount of current they are carrying; in the case of the TL1431, these currents are low.

### 11.2 Layout Example

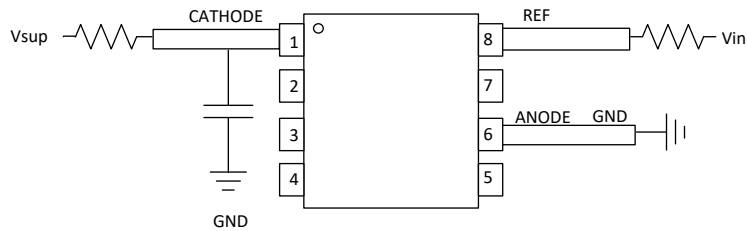


图 11-1. 8-Pin JG Layout Example

## 12 Device and Documentation Support

### 12.1 Documentation Support

#### 12.1.1 Related Documentation

For related documentation see the following:

- Texas Instruments, [Understanding Stability Boundary Conditions Charts in TL431, TL432 Data Sheet application report](#)
- Texas Instruments, [Setting the Shunt Voltage on an Adjustable Shunt Regulator application report](#)

#### 12.2 接收文档更新通知

要接收文档更新通知，请导航至 [ti.com](http://ti.com) 上的器件产品文件夹。点击 [订阅更新](#) 进行注册，即可每周接收产品信息更改摘要。有关更改的详细信息，请查看任何已修订文档中包含的修订历史记录。

#### 12.3 支持资源

TI E2E™ [支持论坛](#) 是工程师的重要参考资料，可直接从专家获得快速、经过验证的解答和设计帮助。搜索现有解答或提出自己的问题可获得所需的快速设计帮助。

链接的内容由各个贡献者“按原样”提供。这些内容并不构成 TI 技术规范，并且不一定反映 TI 的观点；请参阅 TI 的 [《使用条款》](#)。

#### 12.4 Trademarks

TI E2E™ is a trademark of Texas Instruments.

所有商标均为其各自所有者的财产。

#### 12.5 静电放电警告



静电放电 (ESD) 会损坏这个集成电路。德州仪器 (TI) 建议通过适当的预防措施处理所有集成电路。如果不遵守正确的处理和安装程序，可能会损坏集成电路。

ESD 的损坏小至导致微小的性能降级，大至整个器件故障。精密的集成电路可能更容易受到损坏，这是因为非常细微的参数更改都可能会导致器件与其发布的规格不相符。

#### 12.6 术语表

[TI 术语表](#) 本术语表列出并解释了术语、首字母缩略词和定义。

## 13 Mechanical, Packaging, and Orderable Information

The following pages include mechanical, packaging, and orderable information. This information is the most current data available for the designated devices. This data is subject to change without notice and revision of this document. For browser-based versions of this data sheet, refer to the left-hand navigation.

**PACKAGING INFORMATION**

Orderable Device	Status (1)	Package Type	Package Drawing	Pins	Package Qty	Eco Plan (2)	Lead finish/ Ball material (6)	MSL Peak Temp (3)	Op Temp (°C)	Device Marking (4/5)	Samples
5962-9962001VPA	ACTIVE	CDIP	JG	8	50	Non-RoHS & Green	SNPB	N / A for Pkg Type	-55 to 125	9962001VPA TL1431M	<a href="#">Samples</a>
5962R9962001VHA	ACTIVE	CFP	U	10	25	Non-RoHS & Green	SNPB	N / A for Pkg Type	-55 to 125	R9962001VHA TL1431M	<a href="#">Samples</a>
5962R9962001VPA	ACTIVE	CDIP	JG	8	50	Non-RoHS & Green	SNPB	N / A for Pkg Type	-55 to 125	R9962001VPA TL1431M	<a href="#">Samples</a>
TL1431U/EM	ACTIVE	CFP	U	10	25	Non-RoHS & Green	SNPB	N / A for Pkg Type	25 to 25	TL1431U/EM EVAL ONLY	<a href="#">Samples</a>

(1) The marketing status values are defined as follows:

**ACTIVE:** Product device recommended for new designs.

**LIFEBUY:** TI has announced that the device will be discontinued, and a lifetime-buy period is in effect.

**NRND:** Not recommended for new designs. Device is in production to support existing customers, but TI does not recommend using this part in a new design.

**PREVIEW:** Device has been announced but is not in production. Samples may or may not be available.

**OBSELETE:** TI has discontinued the production of the device.

(2) **RoHS:** TI defines "RoHS" to mean semiconductor products that are compliant with the current EU RoHS requirements for all 10 RoHS substances, including the requirement that RoHS substance do not exceed 0.1% by weight in homogeneous materials. Where designed to be soldered at high temperatures, "RoHS" products are suitable for use in specified lead-free processes. TI may reference these types of products as "Pb-Free".

**RoHS Exempt:** TI defines "RoHS Exempt" to mean products that contain lead but are compliant with EU RoHS pursuant to a specific EU RoHS exemption.

**Green:** TI defines "Green" to mean the content of Chlorine (Cl) and Bromine (Br) based flame retardants meet JS709B low halogen requirements of <=1000ppm threshold. Antimony trioxide based flame retardants must also meet the <=1000ppm threshold requirement.

(3) MSL, Peak Temp. - The Moisture Sensitivity Level rating according to the JEDEC industry standard classifications, and peak solder temperature.

(4) There may be additional marking, which relates to the logo, the lot trace code information, or the environmental category on the device.

(5) Multiple Device Markings will be inside parentheses. Only one Device Marking contained in parentheses and separated by a "~" will appear on a device. If a line is indented then it is a continuation of the previous line and the two combined represent the entire Device Marking for that device.

(6) Lead finish/Ball material - Orderable Devices may have multiple material finish options. Finish options are separated by a vertical ruled line. Lead finish/Ball material values may wrap to two lines if the finish value exceeds the maximum column width.

**Important Information and Disclaimer:**The information provided on this page represents TI's knowledge and belief as of the date that it is provided. TI bases its knowledge and belief on information provided by third parties, and makes no representation or warranty as to the accuracy of such information. Efforts are underway to better integrate information from third parties. TI has taken and

continues to take reasonable steps to provide representative and accurate information but may not have conducted destructive testing or chemical analysis on incoming materials and chemicals. TI and TI suppliers consider certain information to be proprietary, and thus CAS numbers and other limited information may not be available for release.

In no event shall TI's liability arising out of such information exceed the total purchase price of the TI part(s) at issue in this document sold by TI to Customer on an annual basis.

**OTHER QUALIFIED VERSIONS OF TL1431-SP :**

- Catalog : [TL1431](#)
- Automotive : [TL1431-Q1](#)
- Enhanced Product : [TL1431-EP](#)
- Military : [TL1431M](#)

**NOTE: Qualified Version Definitions:**

- Catalog - TI's standard catalog product
- Automotive - Q100 devices qualified for high-reliability automotive applications targeting zero defects
- Enhanced Product - Supports Defense, Aerospace and Medical Applications
- Military - QML certified for Military and Defense Applications



**TUBE**


\*All dimensions are nominal

Device	Package Name	Package Type	Pins	SPQ	L (mm)	W (mm)	T (μm)	B (mm)
5962R9962001VHA	U	CFP	10	25	506.98	26.16	6220	NA
5962R9962001VPA	JG	CDIP	8	50	506.98	15.24	13440	NA
TL1431U/EM	U	CFP	10	25	506.98	26.16	6220	NA

# PACKAGE OUTLINE

## JG0008A

### CDIP - 5.08 mm max height

CERAMIC DUAL IN-LINE PACKAGE



4230036/A 09/2023

#### NOTES:

1. All linear dimensions are in millimeters. Any dimensions in parenthesis are for reference only. Dimensioning and tolerancing per ASME Y14.5M.
2. This drawing is subject to change without notice.
3. This package can be hermetically sealed with a ceramic lid using glass frit.
4. Index point is provided on cap for terminal identification.
5. Falls within MIL STD 1835 GDIP1-T8

# EXAMPLE BOARD LAYOUT

JG0008A

CDIP - 5.08 mm max height

CERAMIC DUAL IN-LINE PACKAGE



LAND PATTERN EXAMPLE  
NON SOLDER MASK DEFINED  
SCALE: 9X

4230036/A 09/2023



## 重要声明和免责声明

TI“按原样”提供技术和可靠性数据（包括数据表）、设计资源（包括参考设计）、应用或其他设计建议、网络工具、安全信息和其他资源，不保证没有瑕疵且不做任何明示或暗示的担保，包括但不限于对适销性、某特定用途方面的适用性或不侵犯任何第三方知识产权的暗示担保。

这些资源可供使用 TI 产品进行设计的熟练开发人员使用。您将自行承担以下全部责任：(1) 针对您的应用选择合适的 TI 产品，(2) 设计、验证并测试您的应用，(3) 确保您的应用满足相应标准以及任何其他功能安全、信息安全、监管或其他要求。

这些资源如有变更，恕不另行通知。TI 授权您仅可将这些资源用于研发本资源所述的 TI 产品的应用。严禁对这些资源进行其他复制或展示。您无权使用任何其他 TI 知识产权或任何第三方知识产权。您应全额赔偿因在这些资源的使用中对 TI 及其代表造成的任何索赔、损害、成本、损失和债务，TI 对此概不负责。

TI 提供的产品受 [TI 的销售条款](#) 或 [ti.com](#) 上其他适用条款/TI 产品随附的其他适用条款的约束。TI 提供这些资源并不会扩展或以其他方式更改 TI 针对 TI 产品发布的适用的担保或担保免责声明。

TI 反对并拒绝您可能提出的任何其他或不同的条款。

邮寄地址：Texas Instruments, Post Office Box 655303, Dallas, Texas 75265  
Copyright © 2024，德州仪器 (TI) 公司