

1.8V，可编程电阻器 温度开关和SC70内的 模拟输出温度传感器

 查询样品: **TMP300B-Q1**

特性

- 准确度: $\pm 1^{\circ}\text{C}$ (+25°C时的典型值)
- 可编程跳变点
- 可编程滞后: $5^{\circ}\text{C}/10^{\circ}\text{C}$
- 开漏电路输出
- 低功率: $110\mu\text{A}$ (最大值)
- 宽电压范围: **+1.8V 至 +18V**
- 运行温度: -40°C 至 $+150^{\circ}\text{C}$
- 模拟输出: $10\text{mV}/^{\circ}\text{C}$
- **SC70-6** 封装

应用范围

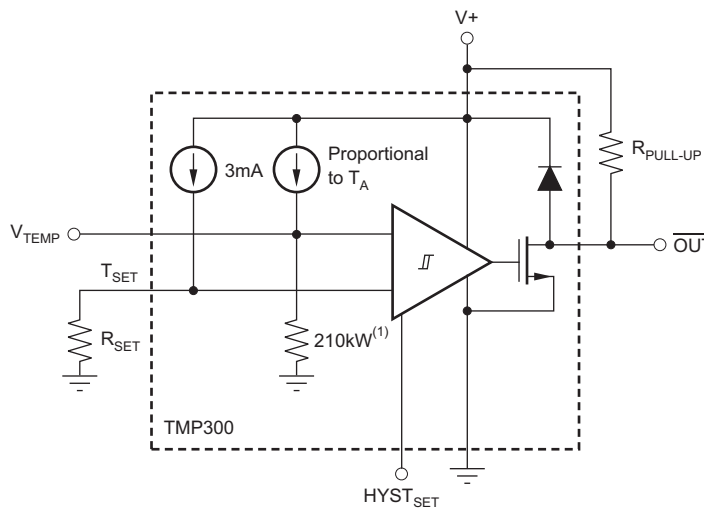
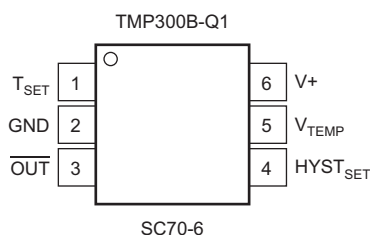
- 符合汽车应用要求
- 电源系统
- **DC-DC**模块
- 过热监控
- 电子保护系统

说明

TMP300B-Q1是一款低功率，电阻器可编程，数字输出温度开关。通过添加一个外部电阻器它可设定一个阈值点。提供2级滞后。TMP300B-Q1有一个 V_{TEMP} 模拟输出，此输出能被用做一个测试点或者被用于温度补偿环路。

因其电源电压低至1.8V并且流耗较低，TMP300B-Q1非常适合对于电源要求较高的应用。

采用具有经证实的热特性的2个微封装，为需要简单和可靠温度管理的用户提供完整的和简单的解决方案。



NOTE: (1) Thinfilm resistor with approximately 10% accuracy; however, this accuracy error is trimmed out at the factory.



Please be aware that an important notice concerning availability, standard warranty, and use in critical applications of Texas Instruments semiconductor products and disclaimers thereto appears at the end of this data sheet.

All trademarks are the property of their respective owners.



This integrated circuit can be damaged by ESD. Texas Instruments recommends that all integrated circuits be handled with appropriate precautions. Failure to observe proper handling and installation procedures can cause damage.

ESD damage can range from subtle performance degradation to complete device failure. Precision integrated circuits may be more susceptible to damage because very small parametric changes could cause the device not to meet its published specifications.

ORDERING INFORMATION⁽¹⁾

| ORDERABLE P/N | T _A | PACKAGE | TOP SIDE SYMBOL |
|---------------------------------|----------------|---------------------------|-----------------|
| TMP300BQDCKRQ1 or TMP300B-Q1 | -40°C to 125°C | SC70 - DCK Reel of 3000 | SBG |

(1) For the most current package and ordering information see the Package Option Addendum at the end of this document, or see the TI web site at www.ti.com.

ABSOLUTE MAXIMUM RATINGS⁽¹⁾

| | | VALUE | UNIT |
|--|----------------------------|--------------------|------|
| Supply Voltage | V+ | +18 | V |
| Signal Input Terminals, Voltage ⁽²⁾ | | -0.5 to (V+) + 0.5 | V |
| Signal Input Terminals, Current ⁽²⁾ | | ±10 | mA |
| Output Short-Circuit ⁽³⁾ | I _{sc} | Continuous | |
| Open-Drain Output | | (V+) + 0.5 | V |
| Operating Temperature | T _A | -40 to +150 | °C |
| Storage Temperature | T _A | -55 to +150 | °C |
| Junction Temperature | T _J | +150 | °C |
| ESD Rating | Human Body Model (HBM) | 4000 | V |
| | Charged Device Model (CDM) | 1000 | V |
| | Machine Model (MM) | 200 | V |

- (1) Stresses above these ratings may cause permanent damage. Exposure to absolute maximum conditions for extended periods may degrade device reliability. These are stress ratings only, and functional operation of the device at these or any other conditions beyond those specified is not supported.
- (2) Input terminals are diode-clamped to the power-supply rails. Input signals that can swing more than 0.5V beyond the supply rails should be current limited to 10mA or less.
- (3) Short-circuit to ground.

ELECTRICAL CHARACTERISTICS

At $V_S = 3.3V$ and $T_A = -40^\circ C$ to $+125^\circ C$, unless otherwise noted.

| PARAMETER | TEST CONDITIONS | TMP300B-Q1 | | | UNIT | |
|---|---|-----------------------------|---------|---------------------------|---------------------------|------------|
| | | MIN | TYP | MAX | | |
| TEMPERATURE MEASUREMENT | | | | | | |
| Measurement Range | $V_S = 2.35V$ to $18V$ | -40 | | +125 | $^\circ C$ | |
| | $V_S = 1.8V$ to $2.35V$ | -40 | | $100 \times (V_S - 0.95)$ | $^\circ C$ | |
| TRIP POINT | | | | | | |
| Total Accuracy | $T_A = -40^\circ C$ to $+125^\circ C$ | | ± 2 | ± 6 | $^\circ C$ | |
| R_{SET} Equation | T_C is in $^\circ C$ | $R_{SET} = 10 (50 + T_C)/3$ | | | $k\Omega$ | |
| HYSTERESIS SET INPUT | | | | | | |
| LOW Threshold ⁽¹⁾ | | | | 0.4 | V | |
| HIGH Threshold ⁽¹⁾ | | $V_S - 0.4$ | | | V | |
| Threshold Hysteresis | $HYST_{SET} = GND$ | | 5 | | $^\circ C$ | |
| | $HYST_{SET} = V_S$ | | 10 | | $^\circ C$ | |
| DIGITAL OUTPUT | | | | | | |
| Logic Family | | | CMOS | | | |
| Open-Drain Leakage Current ⁽¹⁾ | $OUT = V_S$ | | | 10 | μA | |
| Logic Levels | | | | | | |
| V_{OL} | $V_S = 1.8V$ to $18V$, $I_{SINK} = 5mA$ | | | 0.3 | V | |
| ANALOG OUTPUT | | | | | | |
| Accuracy | | | ± 2 | ± 5 | $^\circ C$ | |
| Temperature Sensitivity | | | 10 | | $mV/^\circ C$ | |
| Output Voltage ⁽¹⁾ | $T_A = +25^\circ C$ | 720 | 750 | 780 | mV | |
| V_{TEMP} Pin Output Resistance | | | 210 | | $k\Omega$ | |
| POWER SUPPLY | | | | | | |
| Quiescent Current ⁽²⁾ | I_Q , $V_S = 1.8V$ to $18V$, $T_A = -40^\circ C$ to $+125^\circ C$ | | | 110 | μA | |
| TEMPERATURE RANGE | | | | | | |
| Specified Range | T_A | $V_S = 2.35V$ to $18V$ | -40 | | +125 | $^\circ C$ |
| | | $V_S = 1.8V$ to $2.35V$ | -40 | | $100 \times (V_S - 0.95)$ | $^\circ C$ |
| Operating Range | T_A | $V_S = 2.35V$ to $18V$ | -40 | | +150 | $^\circ C$ |
| | | $V_S = 1.8V$ to $2.35V$ | -50 | | $100 \times (V_S - 0.95)$ | $^\circ C$ |
| Thermal Resistance | θ_{JA} | | | | | |
| SC70 | | | | 250 | $^\circ C/W$ | |
| SOT23-6 | | | | 180 | $^\circ C/W$ | |

(1) Specified by design. Not production tested.

(2) See [Figure 1](#) for typical quiescent current.

TYPICAL CHARACTERISTICS

At $V_S = 5V$, unless otherwise noted.

QUIESCENT CURRENT OVER TEMPERATURE AND SUPPLY

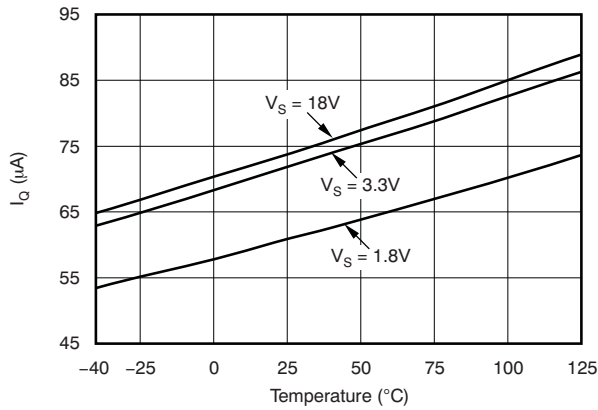


Figure 1.

R_{SET} SHIFT DUE TO R_{SET} TOLERANCE

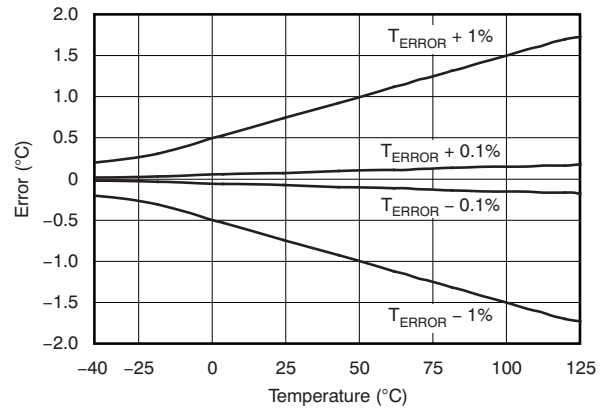


Figure 2.

R_{SET} VS TEMPERATURE

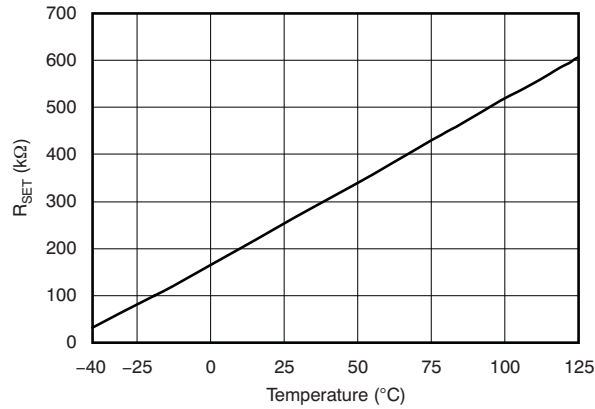


Figure 3.

TYPICAL TRIP ERROR

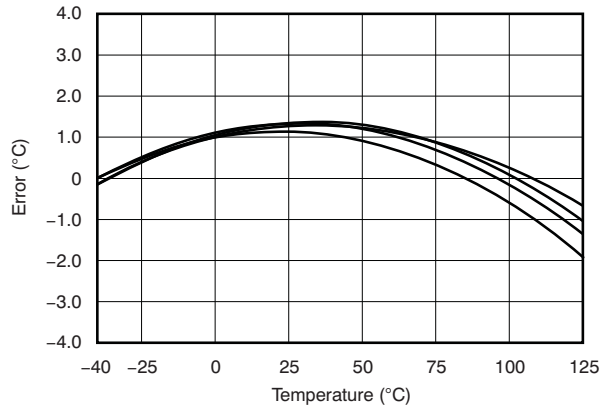


Figure 4.

TYPICAL ANALOG OUTPUT ERROR

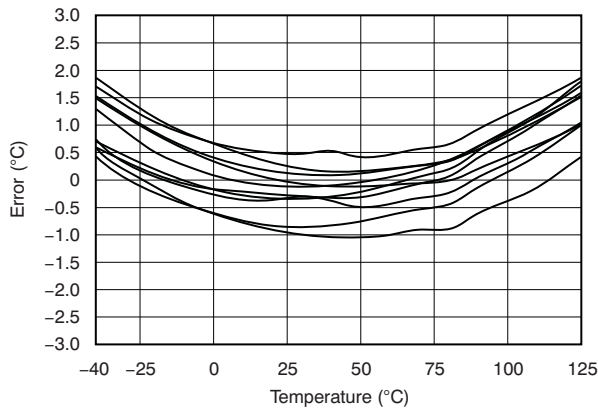


Figure 5.

ANALOG PSR OVER TEMPERATURE

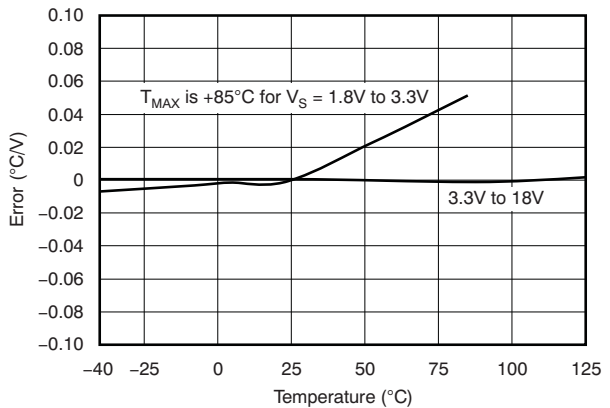
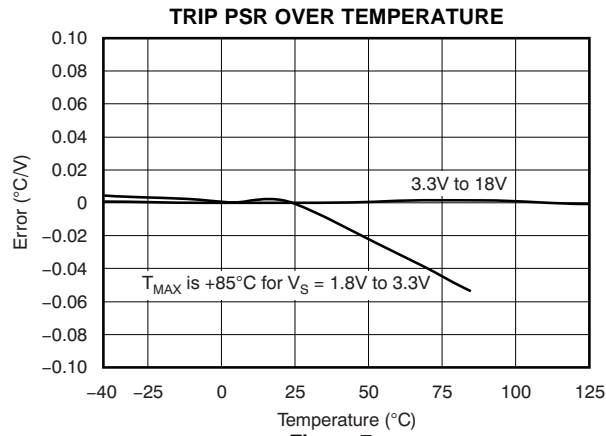


Figure 6.

TYPICAL CHARACTERISTICS (continued)

At $V_S = 5V$, unless otherwise noted.



APPLICATIONS INFORMATION

The TMP300B-Q1 is a thermal sensor designed for over-temperature protection circuits in electronic systems. The TMP300B-Q1 uses a set resistor to program the trip temperature of the digital output. An additional high-impedance (210kΩ) analog voltage output provides the temperature reading.

CALCULATING R_{SET}

The set resistor (R_{SET}) provides a threshold voltage for the comparator input. The TMP300B-Q1 trips when the V_{TEMP} pin exceeds the T_{SET} voltage. The value of the set resistor is determined by the analog output function and the 3μA internal bias current.

To set the TMP300B-Q1 to trip at a preset value, calculate the R_{SET} resistor value according to Equation 1 or Equation 2:

$$R_{SET} = \frac{(T_{SET} \times 0.01 + 0.5)}{3e^{-6}} \tag{1}$$

Where T_{SET} is in °C; or

$$R_{SET} \text{ in } k\Omega = \frac{10(50 + T_{SET})}{3} \tag{2}$$

Where T_{SET} is in °C.

USING V_{TEMP} TO TRIP THE DIGITAL OUTPUT

The analog voltage output can also serve as a voltage input that forces a trip of the digital output to simulate a thermal event. This simulation facilitates easy system design and test of thermal safety circuits, as shown in Figure 8.

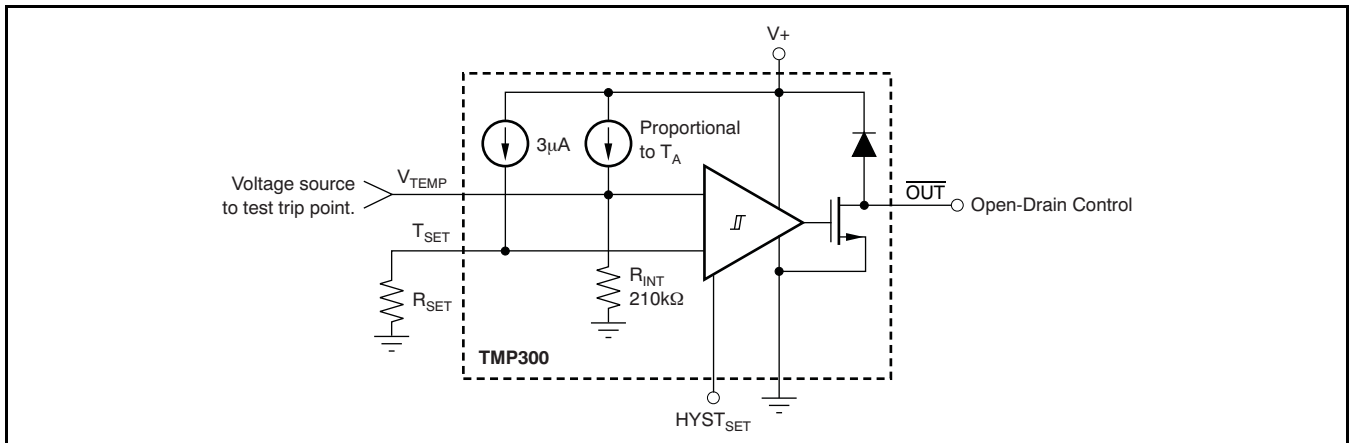


Figure 8. Applying Voltage to Trip Digital Output

ANALOG TEMPERATURE OUTPUT

The analog out or V_{TEMP} pin is high-impedance (210k Ω). Avoid loading this pin to prevent degrading the analog out value or trip point. Buffer the output of this pin when using it for direct thermal measurement. Figure 9 shows buffering of the analog output signal.

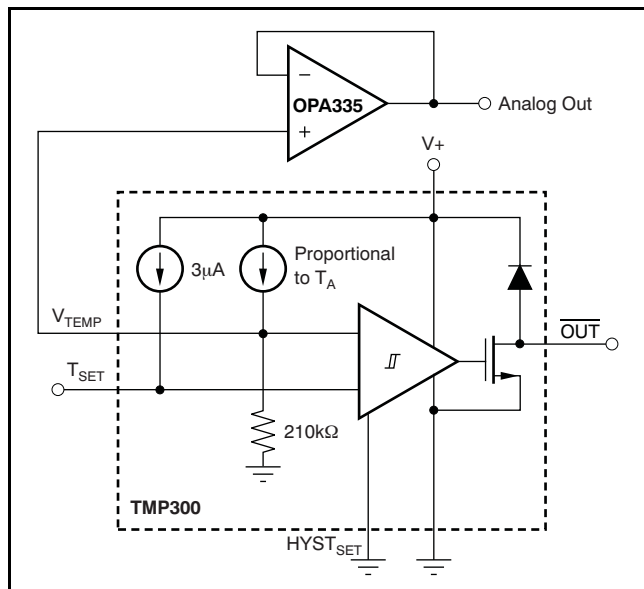


Figure 9. Buffering the Analog Output Signal

USING A DAC TO SET THE TRIP POINT

The trip point is easily converted by changing the digital-to-analog converter (DAC) code. This technique can be useful for control loops where a large thermal mass is being brought up to the set temperature and the \overline{OUT} pin is used to control the heating element. The analog output can be monitored in a control algorithm that adjusts the set temperature to prevent overshoot. Trip set voltage error versus temperature is shown in Figure 10, which shows error in $^{\circ}\text{C}$ of the comparator input over temperature. An alternative method of setting the trip point by using a DAC is shown in Figure 11.

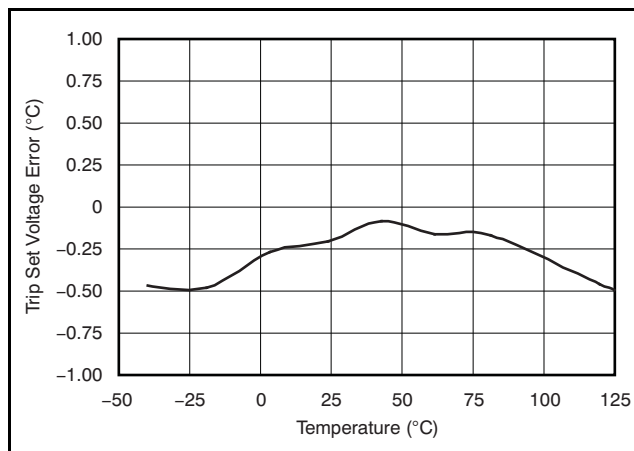


Figure 10. Trip Set Voltage Error vs Temperature

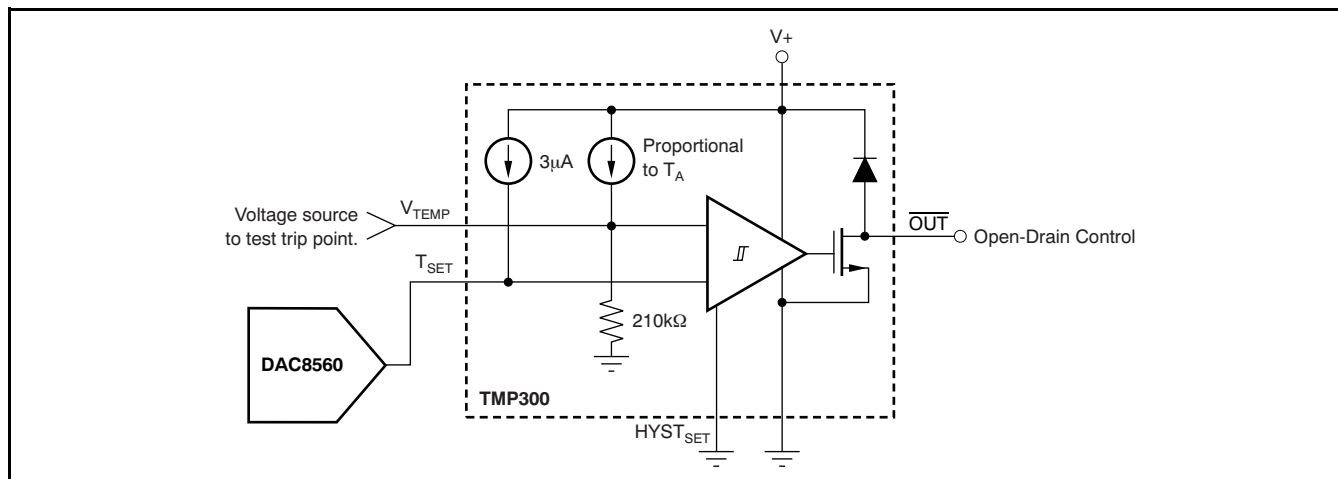


Figure 11. DAC Generates the Voltage-Driving T_{SET} Pin

HYSTERESIS

The hysteresis pin has two settings. Grounding $HYST_{SET}$ results in 5°C of hysteresis. Connecting it to V_S results in 10°C of hysteresis. Hysteresis error variation over temperature is shown in Figure 12 and Figure 13.

Bypass capacitors should be used on the supplies as well as on the R_{SET} and analog out (V_{TEMP}) pins when in noisy environments, as shown in Figure 14. These capacitors reduce premature triggering of the comparator.

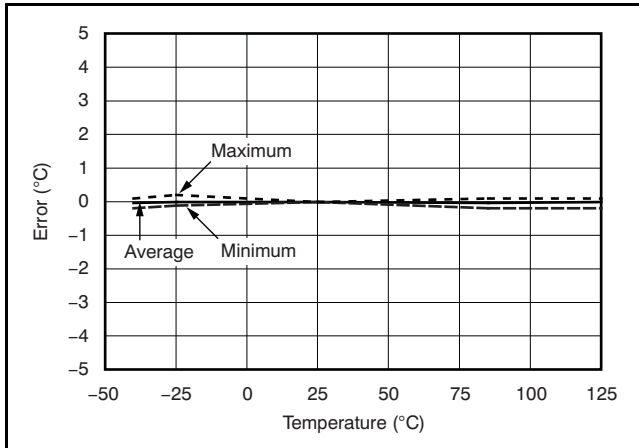


Figure 12. 5°C Hysteresis Error vs Temperature

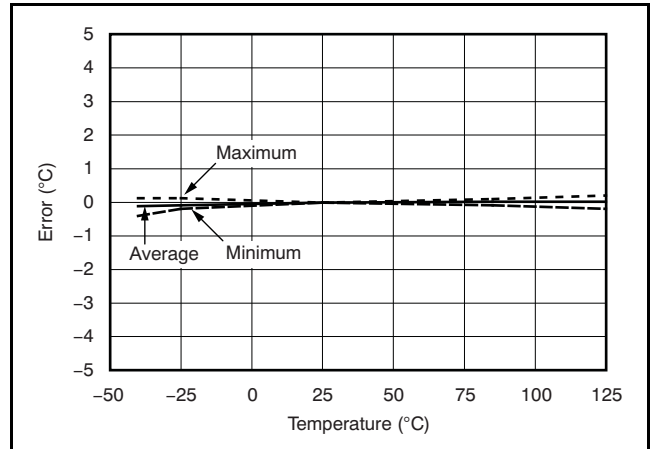


Figure 13. 10°C Hysteresis Error vs Temperature

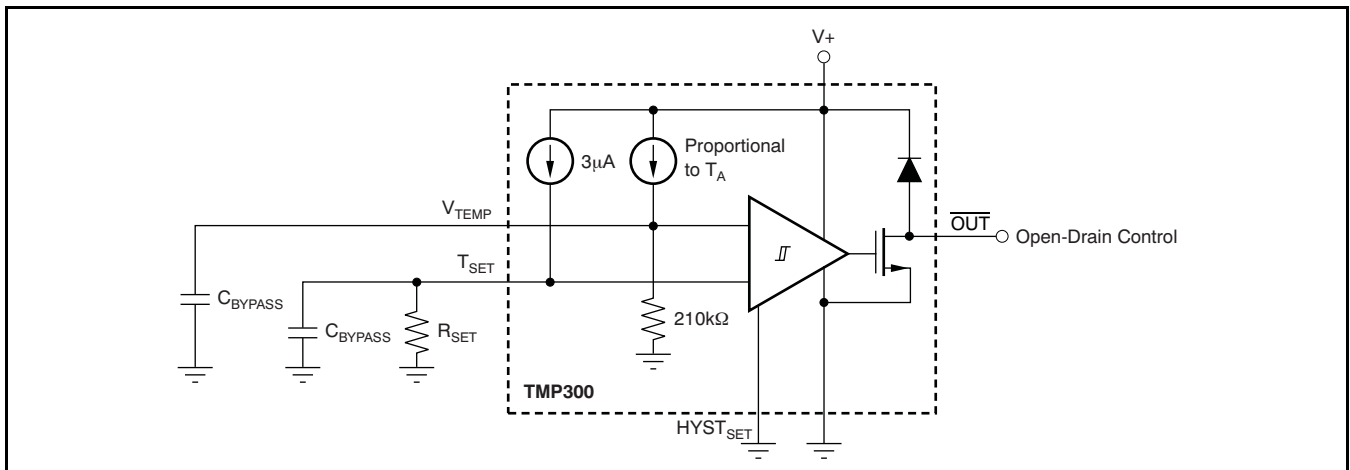


Figure 14. Bypass Capacitors Prevent Early Comparator Toggling Due to Circuit Board Noise

PACKAGING INFORMATION

| Orderable Device | Status (1) | Package Type | Package Drawing | Pins | Package Qty | Eco Plan (2) | Lead finish/ Ball material (6) | MSL Peak Temp (3) | Op Temp (°C) | Device Marking (4/5) | Samples |
|------------------|---------------|--------------|--------------------|------|----------------|-----------------|--------------------------------------|----------------------|--------------|-------------------------|---------|
| TMP300BQDCKRQ1 | ACTIVE | SC70 | DCK | 6 | 3000 | RoHS & Green | NIPDAU | Level-1-260C-UNLIM | -40 to 125 | SBG | Samples |

(1) The marketing status values are defined as follows:

ACTIVE: Product device recommended for new designs.

LIFEBUY: TI has announced that the device will be discontinued, and a lifetime-buy period is in effect.

NRND: Not recommended for new designs. Device is in production to support existing customers, but TI does not recommend using this part in a new design.

PREVIEW: Device has been announced but is not in production. Samples may or may not be available.

OBSOLETE: TI has discontinued the production of the device.

(2) **RoHS:** TI defines "RoHS" to mean semiconductor products that are compliant with the current EU RoHS requirements for all 10 RoHS substances, including the requirement that RoHS substance do not exceed 0.1% by weight in homogeneous materials. Where designed to be soldered at high temperatures, "RoHS" products are suitable for use in specified lead-free processes. TI may reference these types of products as "Pb-Free".

RoHS Exempt: TI defines "RoHS Exempt" to mean products that contain lead but are compliant with EU RoHS pursuant to a specific EU RoHS exemption.

Green: TI defines "Green" to mean the content of Chlorine (Cl) and Bromine (Br) based flame retardants meet JS709B low halogen requirements of <=1000ppm threshold. Antimony trioxide based flame retardants must also meet the <=1000ppm threshold requirement.

(3) MSL, Peak Temp. - The Moisture Sensitivity Level rating according to the JEDEC industry standard classifications, and peak solder temperature.

(4) There may be additional marking, which relates to the logo, the lot trace code information, or the environmental category on the device.

(5) Multiple Device Markings will be inside parentheses. Only one Device Marking contained in parentheses and separated by a "-" will appear on a device. If a line is indented then it is a continuation of the previous line and the two combined represent the entire Device Marking for that device.

(6) Lead finish/Ball material - Orderable Devices may have multiple material finish options. Finish options are separated by a vertical ruled line. Lead finish/Ball material values may wrap to two lines if the finish value exceeds the maximum column width.

Important Information and Disclaimer: The information provided on this page represents TI's knowledge and belief as of the date that it is provided. TI bases its knowledge and belief on information provided by third parties, and makes no representation or warranty as to the accuracy of such information. Efforts are underway to better integrate information from third parties. TI has taken and continues to take reasonable steps to provide representative and accurate information but may not have conducted destructive testing or chemical analysis on incoming materials and chemicals. TI and TI suppliers consider certain information to be proprietary, and thus CAS numbers and other limited information may not be available for release.

In no event shall TI's liability arising out of such information exceed the total purchase price of the TI part(s) at issue in this document sold by TI to Customer on an annual basis.

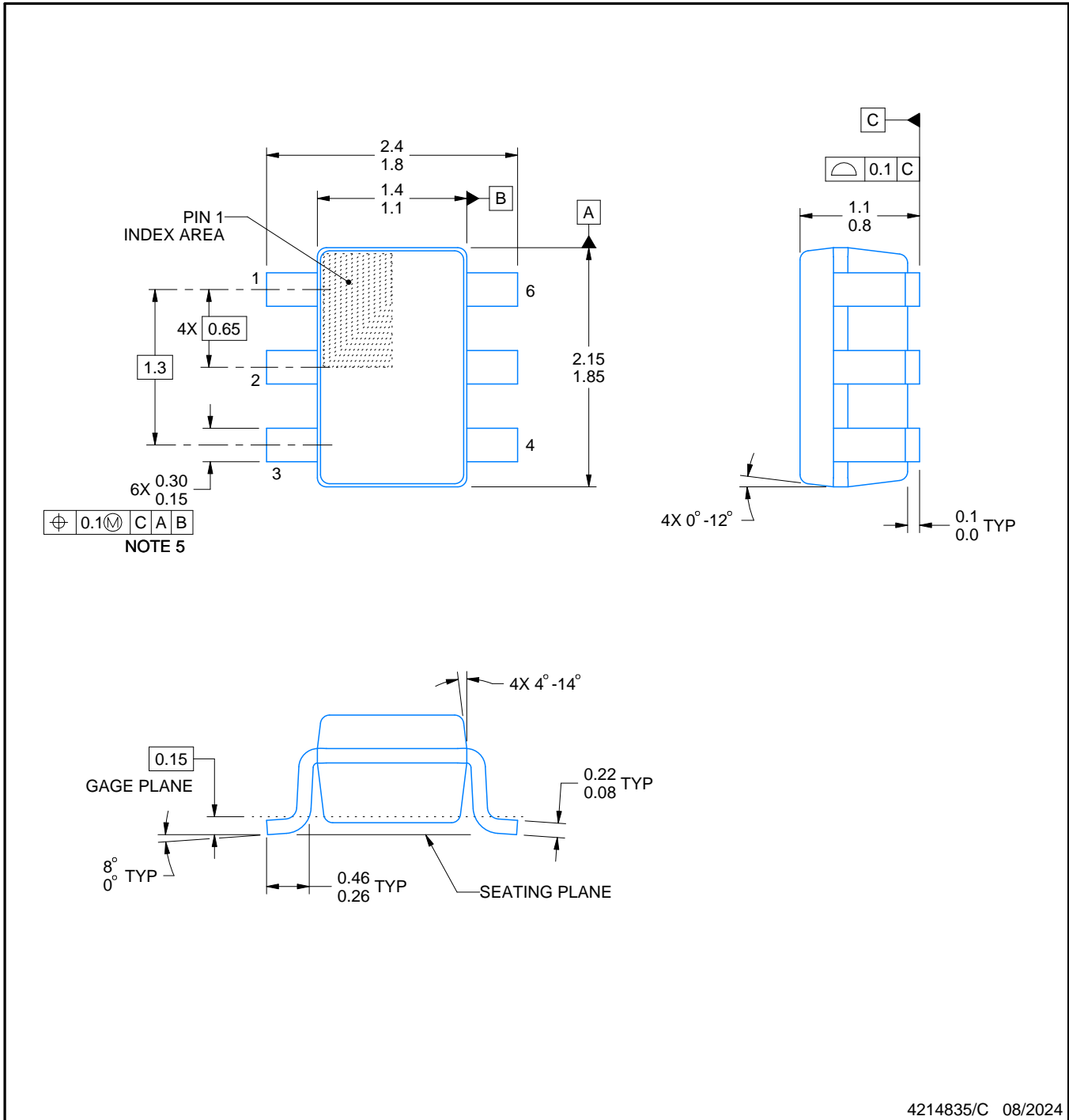
DCK0006A



PACKAGE OUTLINE

SOT - 1.1 max height

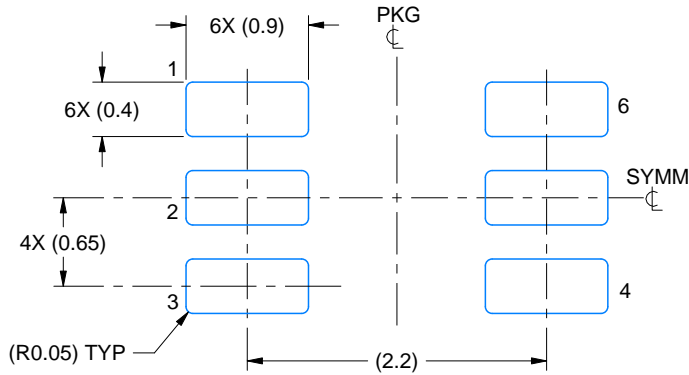
SMALL OUTLINE TRANSISTOR



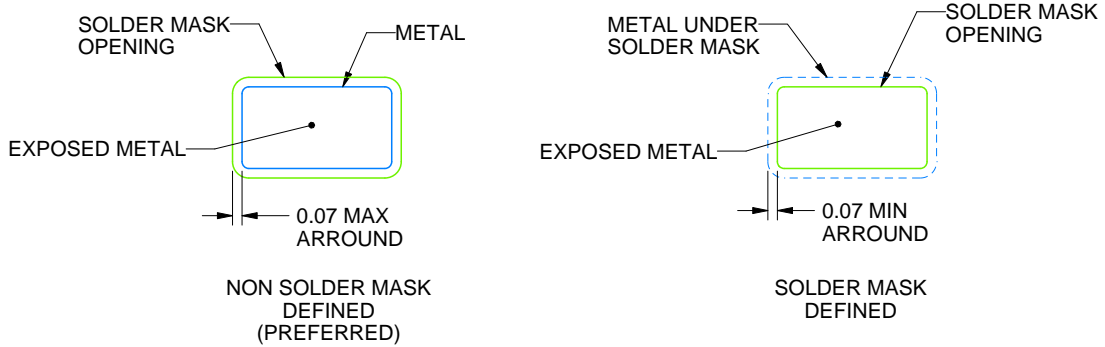
4214835/C 08/2024

NOTES:

1. All linear dimensions are in millimeters. Any dimensions in parenthesis are for reference only. Dimensioning and tolerancing per ASME Y14.5M.
2. This drawing is subject to change without notice.
3. Body dimensions do not include mold flash or protrusion. Mold flash and protrusion shall not exceed 0.15 per side.
4. Falls within JEDEC MO-203 variation AB.



LAND PATTERN EXAMPLE
EXPOSED METAL SHOWN
SCALE:18X



SOLDER MASK DETAILS

4214835/C 08/2024

NOTES: (continued)

- 5. Publication IPC-7351 may have alternate designs.
- 6. Solder mask tolerances between and around signal pads can vary based on board fabrication site.



SOLDER PASTE EXAMPLE
BASED ON 0.125 THICK STENCIL
SCALE:18X

4214835/C 08/2024

NOTES: (continued)

7. Laser cutting apertures with trapezoidal walls and rounded corners may offer better paste release. IPC-7525 may have alternate design recommendations.
8. Board assembly site may have different recommendations for stencil design.

重要声明和免责声明

TI“按原样”提供技术和可靠性数据（包括数据表）、设计资源（包括参考设计）、应用或其他设计建议、网络工具、安全信息和其他资源，不保证没有瑕疵且不做任何明示或暗示的担保，包括但不限于对适销性、某特定用途方面的适用性或不侵犯任何第三方知识产权的暗示担保。

这些资源可供使用 TI 产品进行设计的熟练开发人员使用。您将自行承担以下全部责任：(1) 针对您的应用选择合适的 TI 产品，(2) 设计、验证并测试您的应用，(3) 确保您的应用满足相应标准以及任何其他功能安全、信息安全、监管或其他要求。

这些资源如有变更，恕不另行通知。TI 授权您仅可将这些资源用于研发本资源所述的 TI 产品的应用。严禁对这些资源进行其他复制或展示。您无权使用任何其他 TI 知识产权或任何第三方知识产权。您应全额赔偿因在这些资源的使用中对 TI 及其代表造成的任何索赔、损害、成本、损失和债务，TI 对此概不负责。

TI 提供的产品受 [TI 的销售条款](#) 或 [ti.com](#) 上其他适用条款/TI 产品随附的其他适用条款的约束。TI 提供这些资源并不会扩展或以其他方式更改 TI 针对 TI 产品发布的适用的担保或担保免责声明。

TI 反对并拒绝您可能提出的任何其他或不同的条款。

邮寄地址：Texas Instruments, Post Office Box 655303, Dallas, Texas 75265
Copyright © 2024，德州仪器 (TI) 公司