

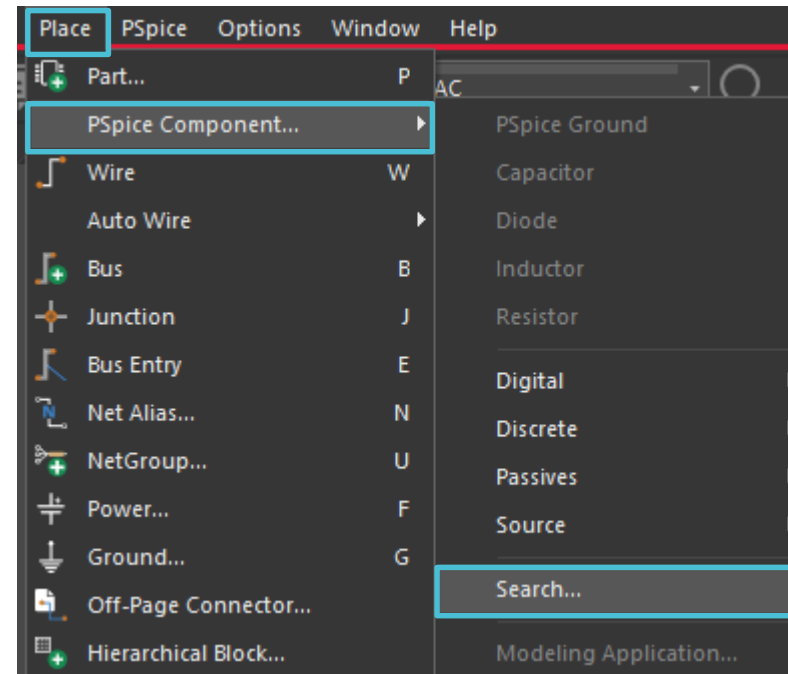
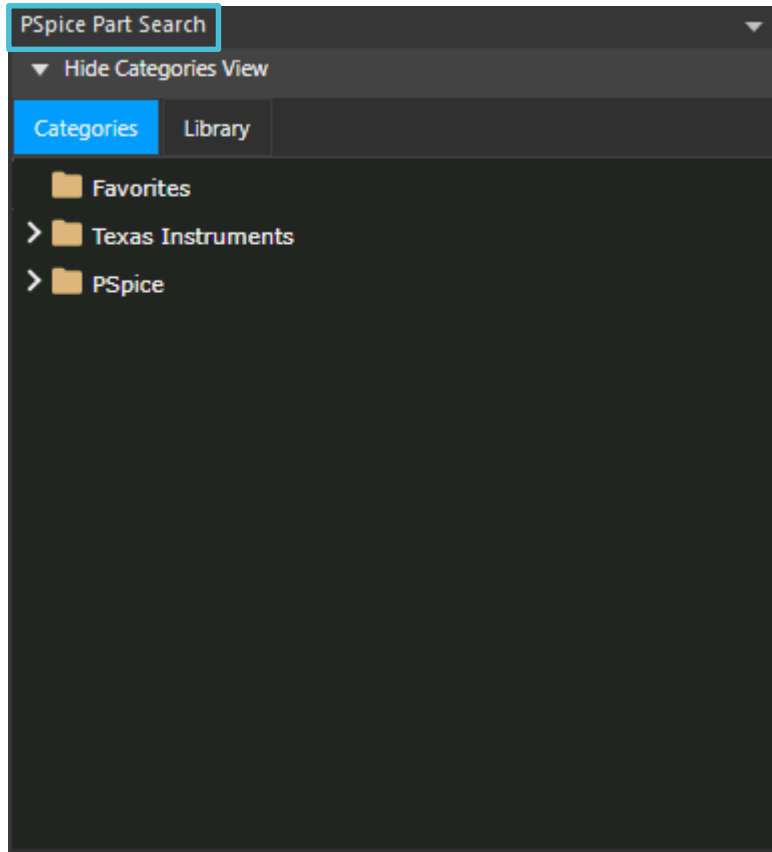
TI integrated library

TI Precision Labs – PSpice® for TI



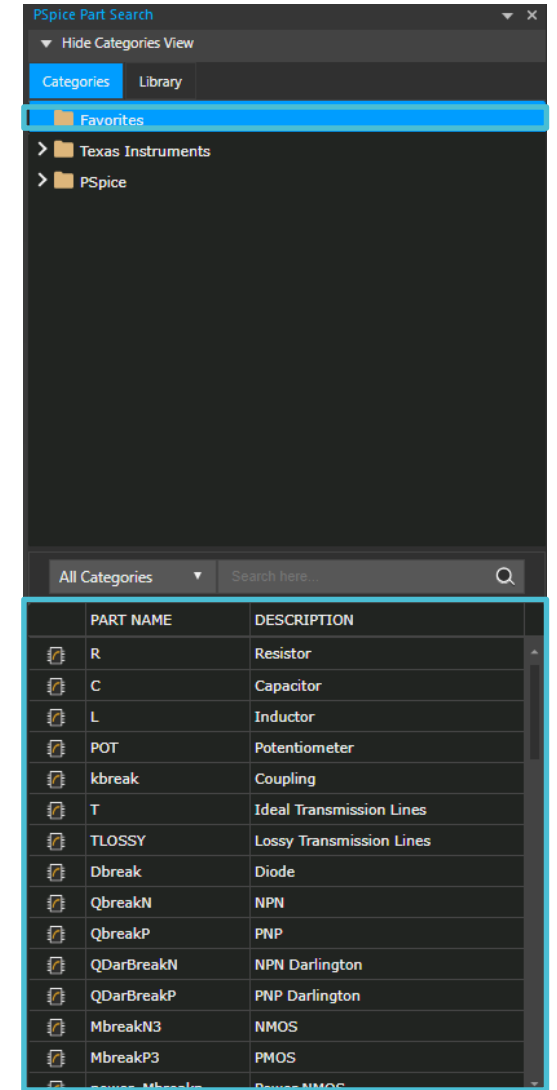
“PSpice Part Search”

- If closed, “PSPICE Part Search” may be opened through the Place menu



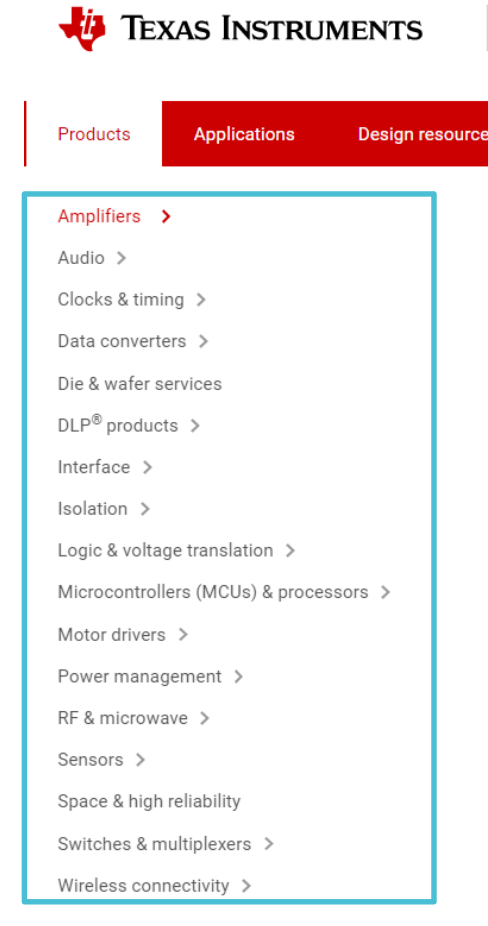
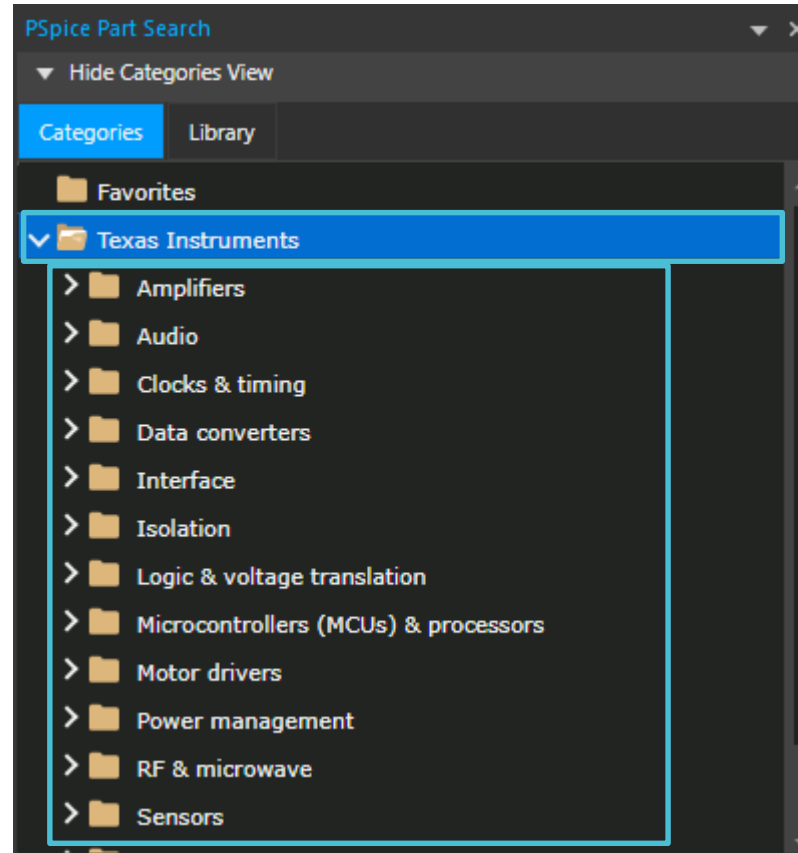
“Favorites” folder

- Populated by default with commonly used components



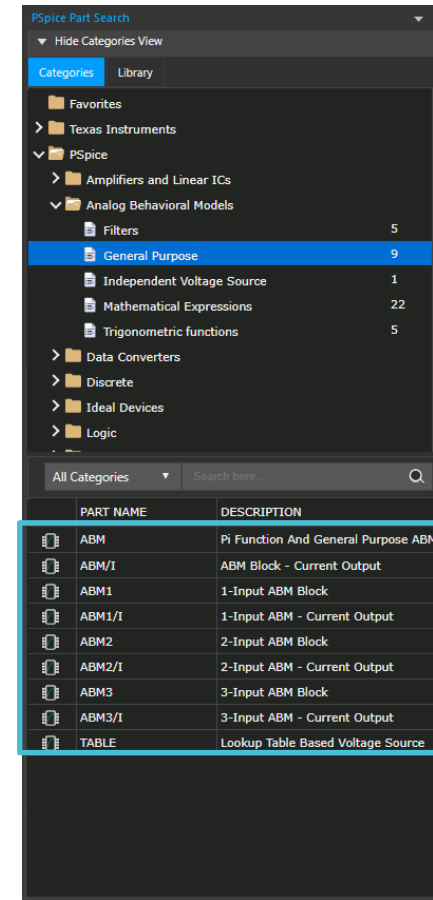
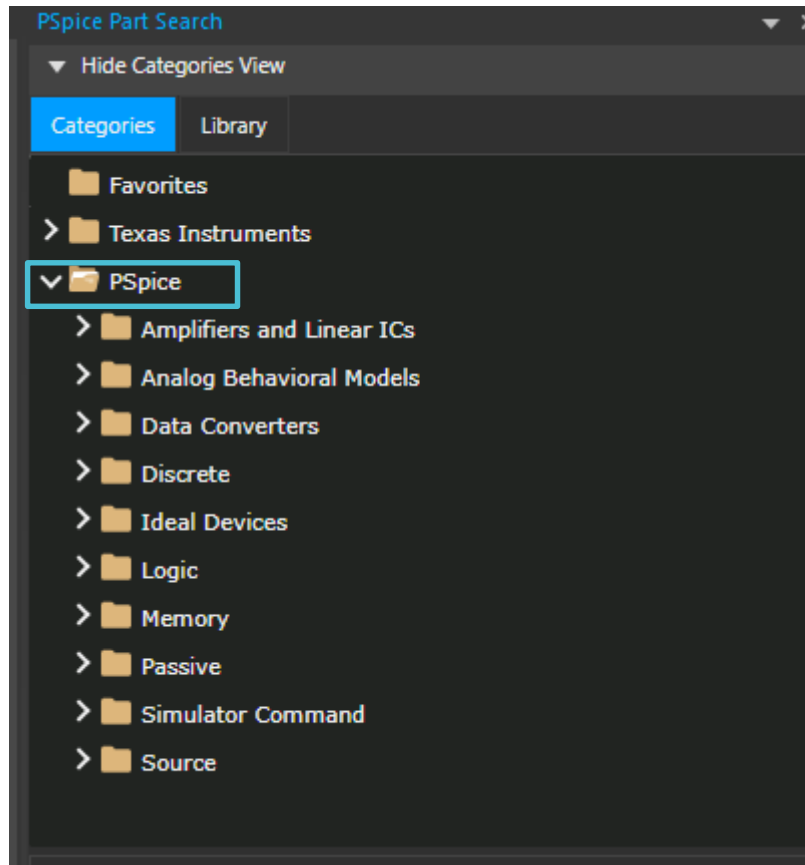
“Texas Instruments” folder

- Automatically includes all models available on ti.com



“PSpice” folder

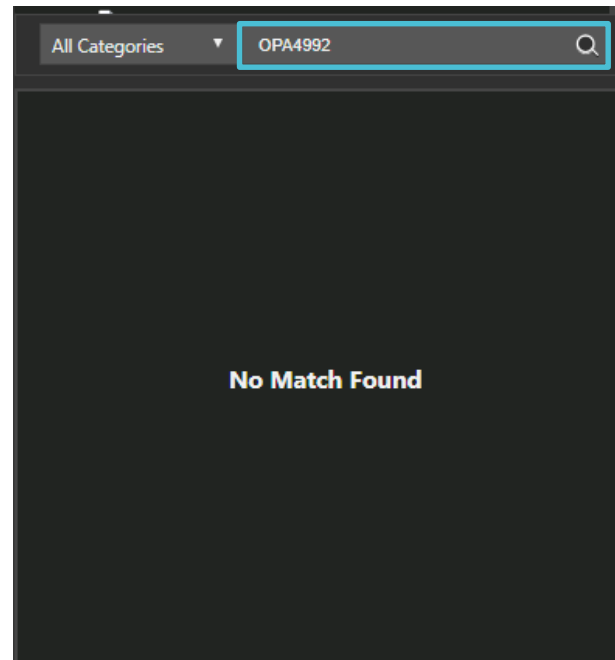
- Contains standard ideal models along with powerful analog behavioral models



Single/dual/quad versions of an op amp

- A family of devices may be represented by a single model
 - For op amps, electrical characteristics apply to all channel counts
- Ti.com product page shows the correct model that is available

PART NAME	DESCRIPTION
OPA244	Single, 36-V, 430-kHz, low-power o...
OPA2703	Dual, 12-V, 1-MHz operational ampl...
OPA2704	Dual, 12-V, 3-MHz operational ampl...
OPA2725	Dual, 12-V, 20-MHz, low-power, low...
OPA2726	Dual, 12-V, 20-MHz, low-power ope...
OPA2743	Dual, 12-V, 7-MHz operational ampl...
OPA2990	Dual, 40-V, 1.1-MHz, low-power op...
OPA2991	Dual, 40-V, 4.5-MHz, low-power op...
OPA2992	Dual, 40-V, 10.6-MHz, rail-to-rail in...
OPA313	Dual, 5.5-V, 1-MHz, low quiescent c...
OPA314	Single, 5.5-V, 3-MHz, low noise (4...
OPA316	Dual, 5.5-V, 10-MHz, low noise (11...
OPA337	Single, 5.5-V, 3-MHz, RRO operatio...
OPA338	Single, 5.5-V, 62.5-MHz, RRO opera...
OPA341	Dual, 5.5-V, 5.5-MHz, RRO operati...

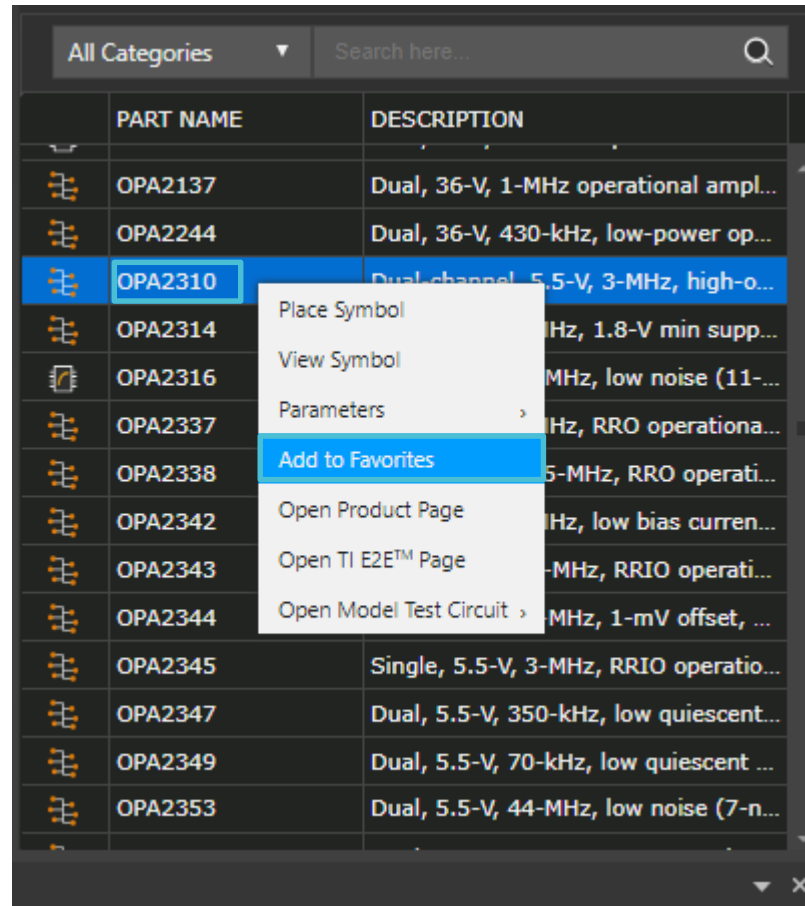


A screenshot of the TI.com product page for OPA4992. The page is titled 'OPA4992 ACTIVE' and includes navigation tabs for 'Product details', 'Technical documentation', 'Design & development', 'Ordering & quality', and 'Support & training'. The 'Design & development' tab is active. Below the navigation, there are several sections for simulation models and tools, each with a 'Download' or 'Request' button. The sections are:

- OPA2992 TINA-TI Reference Design (Rev. A)**: SBOMB0A.ZIP (7 KB) - TINA-TI Reference Design. Download button.
- OPA2992 PSpice Model**: SB0MC15.ZIP (32 KB) - PSpice Model. Download button.
- OPA2992 TINA-TI SPICE Model**: SB0MC21.ZIP (5 KB) - TINA-TI Spice Model. Download button.
- PSPICE-FOR-TI**: PSpice® for TI design and simulation tool. Request button.

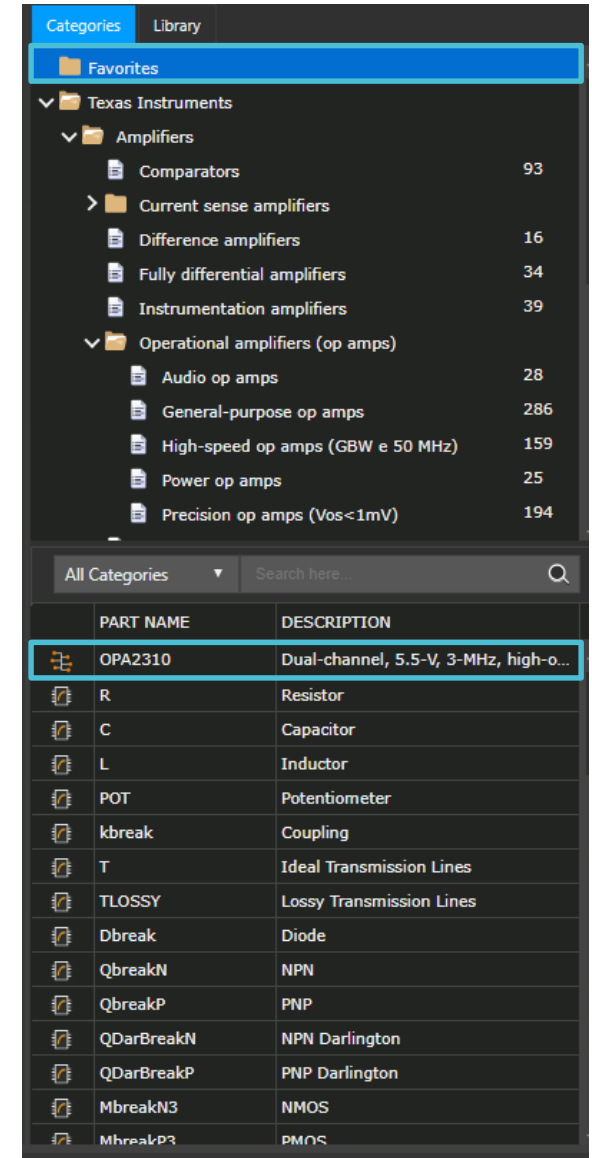
Add to favorites

- Right click on the part name and select “Add to Favorites”



The screenshot shows a table with columns 'PART NAME' and 'DESCRIPTION'. The row for OPA2310 is highlighted in blue. A context menu is open over this row, listing several actions: Place Symbol, View Symbol, Parameters, Add to Favorites (highlighted in blue), Open Product Page, Open TI E2E™ Page, and Open Model Test Circuit.

PART NAME	DESCRIPTION
OPA2137	Dual, 36-V, 1-MHz operational ampl...
OPA2244	Dual, 36-V, 430-kHz, low-power op...
OPA2310	Dual-channel, 5.5-V, 3-MHz, high-o...
OPA2314	Hz, 1.8-V min supp...
OPA2316	MHz, low noise (11-...
OPA2337	Hz, RRO operationa...
OPA2338	5-MHz, RRO operati...
OPA2342	Hz, low bias curren...
OPA2343	-MHz, RRIO operati...
OPA2344	MHz, 1-mV offset, ...
OPA2345	Single, 5.5-V, 3-MHz, RRIO operatio...
OPA2347	Dual, 5.5-V, 350-kHz, low quiescent...
OPA2349	Dual, 5.5-V, 70-kHz, low quiescent ...
OPA2353	Dual, 5.5-V, 44-MHz, low noise (7-n...



The screenshot shows a library navigation pane with a 'Favorites' section. The 'Operational amplifiers (op amps)' folder is expanded, showing a list of sub-categories and their counts. The OPA2310 part is highlighted in the main table below.

PART NAME	DESCRIPTION
OPA2310	Dual-channel, 5.5-V, 3-MHz, high-o...
R	Resistor
C	Capacitor
L	Inductor
POT	Potentiometer
kbreak	Coupling
T	Ideal Transmission Lines
TLOSSY	Lossy Transmission Lines
Dbreak	Diode
QbreakN	NPN
QbreakP	PNP
QDarBreakN	NPN Darlington
QDarBreakP	PNP Darlington
MbreakN3	NMOS
MhreakP3	PMOS

Thanks for your time!

To find more **PSpice® for TI**
technical resources and search products,
visit **ti.com/tool/PSPICE-FOR-TI**.