

# Circuit for Driving a Switched-Capacitor SAR ADC With an Instrumentation Amplifier



Art Kay and Bryan McKay

Input	ADC Input	Digital Output ADS8860
-5mV	Out = 0.2V	0A3D <sub>H</sub> or 2621 <sub>10</sub>
15mV	Out = 4.8V	F5C3 <sub>H</sub> or 62915 <sub>10</sub>

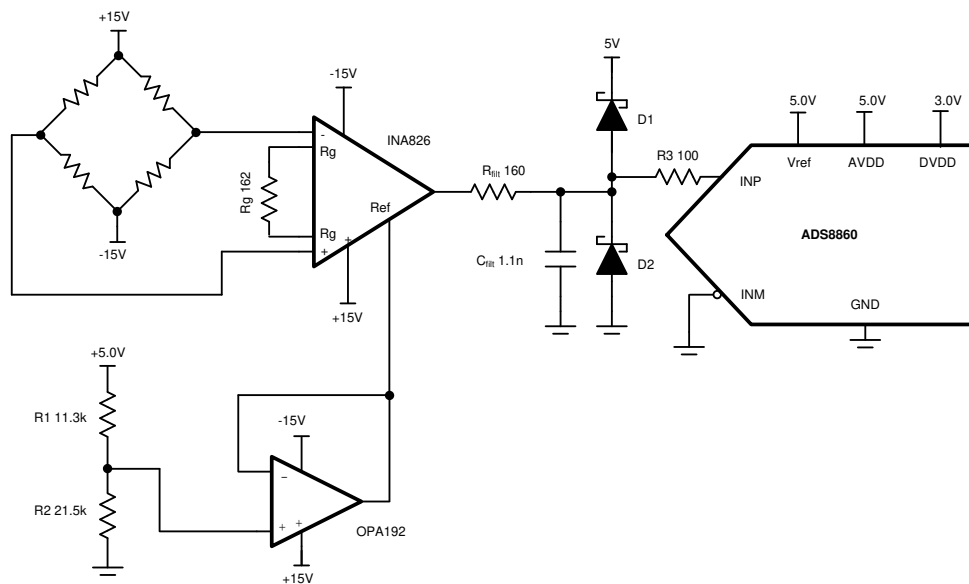
**Table 1-1. Power Supplies**

AVDD	DVDD	V <sub>ref_INA</sub>	V <sub>ref</sub>	V <sub>cc</sub>	V <sub>ee</sub>
5.0V	3.0V	3.277V	5.0V	+15V	-15V

## Design Description

Instrumentation amplifiers are a common way of translating low level sensor outputs to high level signals to drive an ADC. Typically, instrumentation amplifiers are optimized for low noise, low offset, and low drift. Unfortunately, the bandwidth of many instrumentation amplifiers may not be sufficient to achieve good settling to ADC charge kickback at maximum sampling rates. This document shows how sampling rate can be adjusted to achieve good settling. Furthermore, many instrumentation amplifiers are optimized for high-voltage supplies and it may be required to interface the high-voltage output (that is, ±15V) to a lower voltage ADC (for example, 5V). This design shows how to use Schottky diodes and a series resistor to protect the ADC input from an overvoltage condition. Note that the following circuit shows a bridge sensor, but this method could be used for a wide range of different sensors. A modified version of this circuit, [Driving a Switched-Capacitor SAR With a Buffered Instrumentation Amplifier](#) shows how a wide bandwidth buffer can be used to achieve higher sampling rate.

This circuit implementation is applicable to all [Bridge Transducers in PLC's](#) and [Analog Input Modules](#) that require precision signal-processing and data-conversion.



Copyright © 2017, Texas Instruments Incorporated

## Specifications

Specification	Calculated	Simulated
Sampling rate	200ksps	200ksps, settling to $-6\mu\text{V}$
Offset (ADC Input)	$40\mu\text{V} \times 306.7 = 12.27\text{mV}$	16mV
Offset Drift	$(0.4\mu\text{V}/^\circ\text{C}) \times 306.7 = 123\mu\text{V}/^\circ\text{C}$	NA
Noise	978 $\mu\text{V}$	874 $\mu\text{V}$

## Design Notes

1. Select the gain to achieve an input swing that matches the input range of the ADC. Use the instrumentation amplifier reference pin to shift the signal offset to match the input range. This is covered in the component selection section.
2. The input Schottky diode configuration is used to prevent driving the input voltage outside of the absolute maximum specifications. The BAT54S Schottky is a good option for design as this device integrates both diodes into one package and the diodes are low leakage and have a low forward voltage. This is covered in the *component selection* section.
3. The buffer amplifier following the voltage divider is required for driving the reference input of most instrumentation amplifiers. Choose precision resistors and a precision low-offset amplifier as the buffer. Refer to [Selecting the right op amp](#) for more details on this subject.
4. Check the common-mode range of the amplifier using the [Common-Mode Input Range Calculator for Instrumentation Amplifiers](#) software tool.
5. Select C0G capacitors for  $C_{CM1}$ ,  $C_{CM2}$ ,  $C_{DIF}$ , and  $C_{fit}$  to minimize distortion.
6. Use 0.1% 20ppm/ $^\circ\text{C}$  film resistors or better for the gain set resistor  $R_g$ . The error and drift of this resistor directly translates into gain error and gain drift.
7. The [TI Precision Labs – ADCs](#) training video series covers methods for selecting the charge bucket circuit  $R_{fit}$  and  $C_{fit}$ . Although this method was designed for op amps, it can be modified for instrumentation amplifiers. Refer to [Introduction to SAR ADC Front-End Component Selection](#) for details on this subject.

## Component Selection

1. Find the gain set resistor for the instrumentation amplifier to set the output swing to 0.2V to 4.8V.

$$\text{Gain} = \frac{V_{\text{out\_max}} - V_{\text{out\_min}}}{V_{\text{in\_max}} - V_{\text{in\_min}}} = \frac{4.9\text{V} - 0.2\text{V}}{5\text{mV} - (-10\text{mV})} = 306.7$$

$$\text{Gain} = 1 + \frac{49.4\text{k}\Omega}{R_g}$$

$$R_g = \frac{49.4\text{k}\Omega}{\text{Gain} - 1.0} = \frac{49.4\text{k}\Omega}{(306.7) - 1.0} = 151.6\Omega \text{ or } 162\Omega \text{ for standard } 0.1\% \text{ resistor}$$

2. Find the INA826 reference voltage ( $V_{\text{ref}}$ ) to shift the output swing to the proper voltage level.

$$V_{\text{out}} = \text{Gain} \cdot V_{\text{in}} + V_{\text{ref\_INA}}$$

$$V_{\text{ref\_INA}} = V_{\text{out}} - \text{Gain} \cdot V_{\text{in}} = 4.8\text{V} - \left(1 + \frac{49.4\text{k}\Omega}{162\Omega}\right) \cdot (5\text{mV}) = 3.27\text{V}$$

3. Select standard value resistors to set the INA826 reference voltage ( $V_{\text{ref}} = 3.27\text{V}$ ). Use [Analog Engineer's Calculator](#) ("Passive\Find Voltage Divider" section) to find standard values for the voltage divider.

$$V_{\text{ref\_INA}} = \frac{R_2}{R_1 + R_2} \cdot V_{\text{in\_div}} = \frac{21.5\text{k}\Omega}{11.3\text{k}\Omega + 21.5\text{k}\Omega} \cdot (5\text{V}) = 3.277\text{V}$$

Enter the input and output for the voltage divider.

The resistors given are standard value resistors and can be scaled by factors of 10.

- Use the [Common-Mode Input Range Calculator for Instrumentation Amplifiers](#) to determine if the INA826 is violating the common-mode range.

Select INA826.

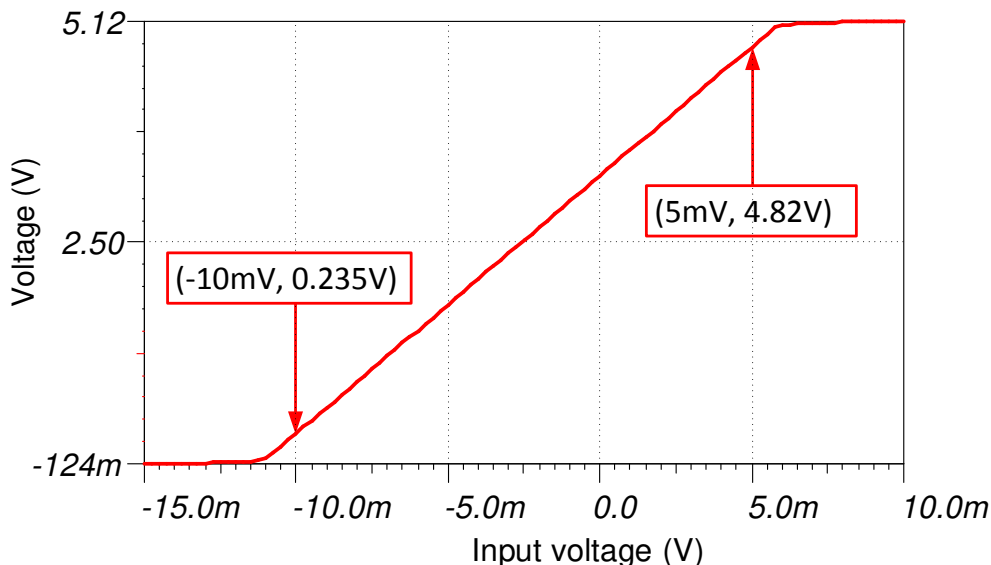
Enter supply voltage, gain, and INA reference input.

Enter the common mode input to the INA ( $V_{cm} = 0V$  here)

The linear output range is given here.  $-14.9V < V_{out} < 14.85V$

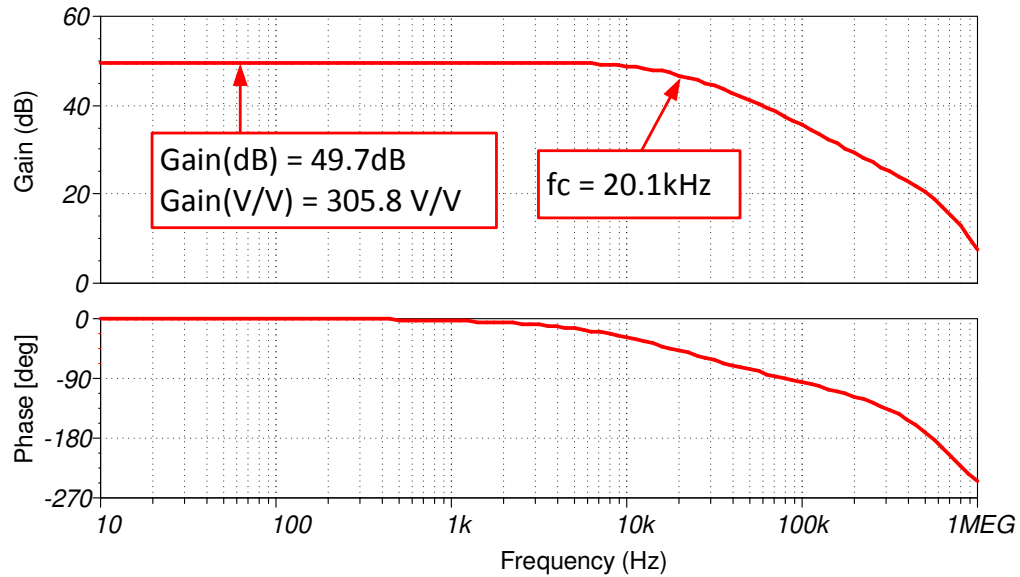
### DC Transfer Characteristics

The following graph shows a linear output response for inputs from  $-5mV$  to  $+15mV$ . Refer to [Determining a SAR ADC's Linear Range when using Instrumentation Amplifiers](#) for detailed theory on this subject. Note that the output range is intentionally limited to  $-0.12V$  to  $5.12V$  using Schottky diodes to protect the ADS8860. Note that Schottky diodes are used because the low forward voltage drop (typically less than  $0.3V$ ) keeps the output limit very near the ADC supply voltages. The absolute maximum rating for the ADS8860 is  $-0.3V < V_{in} < REF + 0.3V$ .



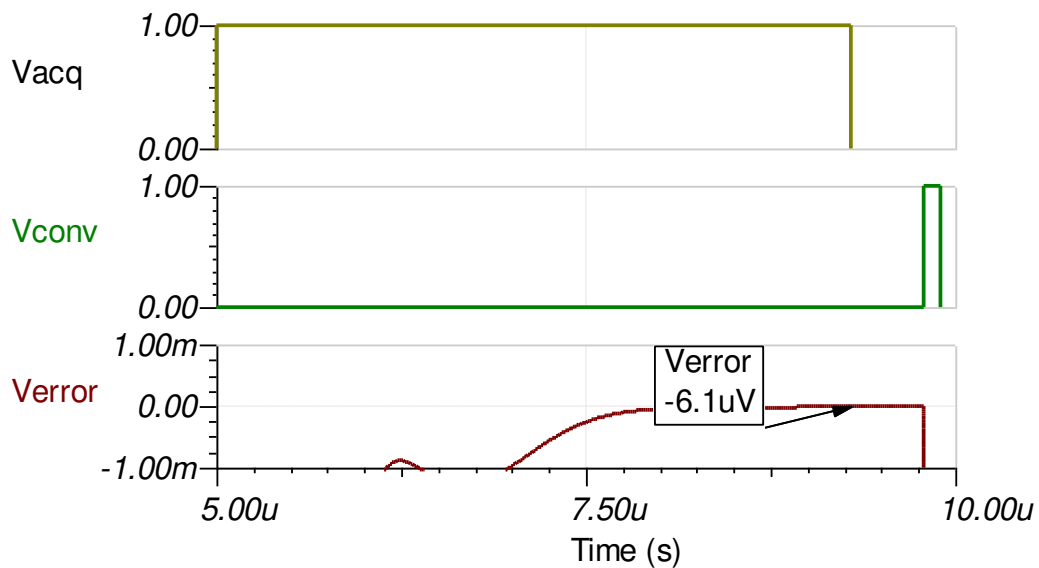
## AC Transfer Characteristics

The bandwidth is simulated to be 20.1kHz, and the gain is 49.7dB which is a linear gain of 305.8. See the video series on [Op Amps: Bandwidth 1](#) for more details on this subject.



## Transient ADC Input Settling Simulation

The following simulation shows settling to a +15mV dc input signal. This type of simulation shows that the sample and hold kickback circuit is properly selected. Refer to [Introduction to SAR ADC Front-End Component Selection](#) for detailed theory on this subject



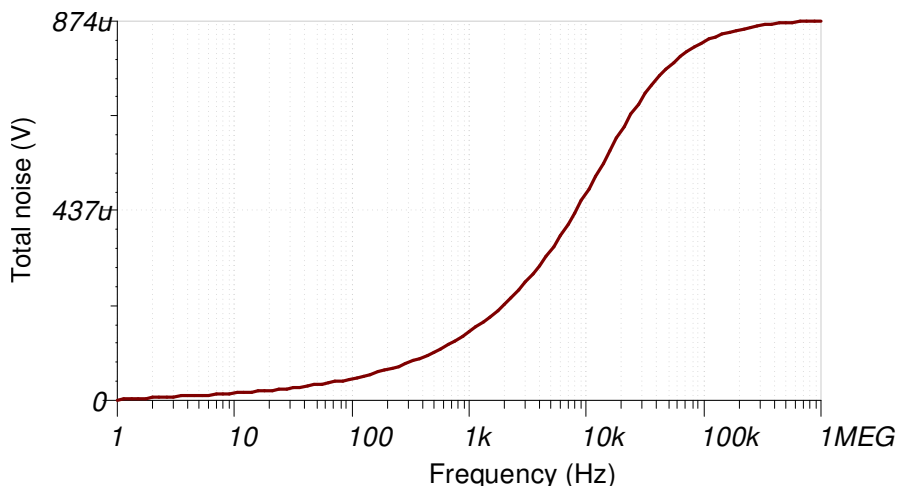
## Noise Simulation

The following simplified noise calculation is provided for a rough estimate. We neglect noise from the OPA192 as the instrumentation amplifier is in high gain, so its noise is dominant.

$$E_n = \text{Gain} \cdot \sqrt{e_{NI}^2 + \left(\frac{e_{NO}}{\text{Gain}}\right)^2} \cdot \sqrt{K_n \cdot f_c}$$

$$E_n = (305.8) \cdot \sqrt{\left(18\text{nV} / \sqrt{\text{Hz}}\right)^2 + \left(\frac{110\text{nV} / \sqrt{\text{Hz}}}{305.8}\right)^2} \cdot \sqrt{1.57 \cdot (20.1\text{kHz})} = 978\mu\text{V} / \sqrt{\text{Hz}}$$

Note that calculated and simulated match well. Refer to [TI Precision Labs - Op Amps: Noise 4](#) for detailed theory on amplifier noise calculations, and [Calculating the Total Noise for ADC Systems](#) for data converter noise.



## Optional Input Filter

The following figure shows a commonly used instrumentation amplifier input filter. The differential noise is filtered with  $C_{dif}$ , and the common-mode noise is filtered with  $C_{cm1}$  and  $C_{cm2}$ . Note that it is recommended that  $C_{dif} \geq 10C_{cm}$ . This prevents conversion of common-mode noise to differential noise due to component tolerances. The following filter was designed for a differential cutoff frequency of 15kHz.

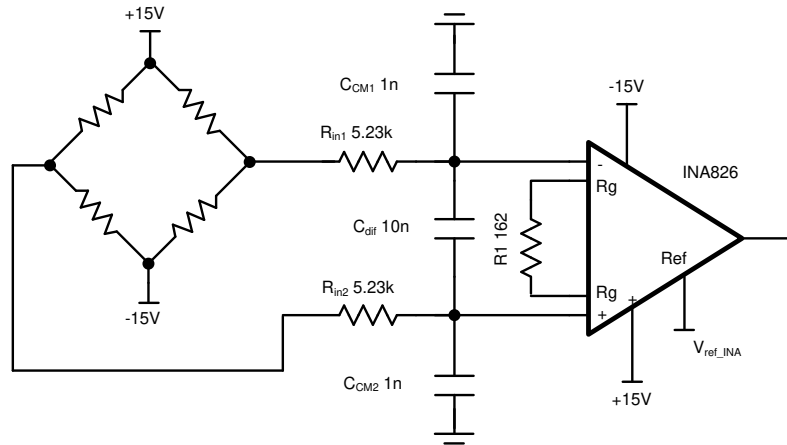
Let  $C_{dif} = 1\text{nF}$  and  $f_{dif} = 15\text{kHz}$

$$R_{in} < \frac{1}{4 \cdot \pi \cdot f_{dif} \cdot C_{dif}} = \frac{1}{4 \cdot \pi \cdot (15\text{kHz}) \cdot (1\text{nF})} = 5.305\text{k}\Omega \text{ or } 5.23\text{k}\Omega \text{ for } 1\% \text{ standard value}$$

$$C_{cm} = \frac{1}{10} \cdot C_{dif} = 100\text{pF}$$

$$f_{cm} = \frac{1}{2 \cdot \pi \cdot R_{in} \cdot C_{cm}} = \frac{1}{2 \cdot \pi \cdot (5.23\text{k}\Omega) \cdot (100\text{pF})} = 304\text{kHz}$$

$$f_{dif} = \frac{1}{4 \cdot \pi \cdot R_{in} \cdot \left(C_{dif} + \frac{1}{2} C_{cm}\right)} = \frac{1}{4 \cdot \pi \cdot (5.23\text{k}\Omega) \cdot \left(1\text{nF} + \frac{1}{2} \cdot 100\text{pF}\right)} = 14.5\text{kHz}$$



Copyright © 2017, Texas Instruments Incorporated

## Design Featured Devices

Device	Key Features	Link	Similar Devices
<a href="#">ADS8860</a>	16-bit resolution, SPI, 1MSPs sample rate, single-ended input, Vref input range 2.5V to 5.0V.	<a href="#">16-bit, 1MSPS, 1-channel SAR ADC with single-ended input, SPI and daisy chain</a>	<a href="#">Precision ADCs</a>
<a href="#">OPA192</a>	Bandwidth 10MHz, Rail-to-Rail input and output, low noise 5.5nV/rHz, low offset $\pm 5\mu\text{V}$ , low offset drift $\pm 0.2\mu\text{V}/^\circ\text{C}$ . (Typical values)	<a href="#">High-Voltage, Rail-to-Rail Input/Output, 5<math>\mu\text{V}</math>, 0.2<math>\mu\text{V}/^\circ\text{C}</math>, Precision Operational Amplifier</a>	<a href="#">Precision op amps (Vos&lt;1mV)</a>
<a href="#">INA826</a>	Bandwidth 1MHz (G = 1), low noise 18nV/rHz, low offset $\pm 40\mu\text{V}$ , low offset drift $\pm 0.4\mu\text{V}/^\circ\text{C}$ , low gain drift 0.1ppm/ $^\circ\text{C}$ . (Typical values)	<a href="#">Precision, 200-<math>\mu\text{A}</math> Supply Current, 36-V Supply Instrumentation Amplifier</a>	<a href="#">Instrumentation amplifiers</a>

## Link to Key Files

Texas Instruments, [Source Files for SBAA277](#), support software

## Revision History

NOTE: Page numbers for previous revisions may differ from page numbers in the current version.

Changes from Revision A (March 2019) to Revision B (September 2024)	Page
<ul style="list-style-type: none"> <li>Updated the format for tables, figures, and cross-references throughout the document.....</li> </ul>	1

Changes from Revision * (December 2017) to Revision A (March 2019)	Page
<ul style="list-style-type: none"> <li>Downstyle the title and changed title role to 'Data Converters'. Added link to circuit cookbook landing page...</li> </ul>	1

## Trademarks

All trademarks are the property of their respective owners.

## IMPORTANT NOTICE AND DISCLAIMER

TI PROVIDES TECHNICAL AND RELIABILITY DATA (INCLUDING DATA SHEETS), DESIGN RESOURCES (INCLUDING REFERENCE DESIGNS), APPLICATION OR OTHER DESIGN ADVICE, WEB TOOLS, SAFETY INFORMATION, AND OTHER RESOURCES "AS IS" AND WITH ALL FAULTS, AND DISCLAIMS ALL WARRANTIES, EXPRESS AND IMPLIED, INCLUDING WITHOUT LIMITATION ANY IMPLIED WARRANTIES OF MERCHANTABILITY, FITNESS FOR A PARTICULAR PURPOSE OR NON-INFRINGEMENT OF THIRD PARTY INTELLECTUAL PROPERTY RIGHTS.

These resources are intended for skilled developers designing with TI products. You are solely responsible for (1) selecting the appropriate TI products for your application, (2) designing, validating and testing your application, and (3) ensuring your application meets applicable standards, and any other safety, security, regulatory or other requirements.

These resources are subject to change without notice. TI grants you permission to use these resources only for development of an application that uses the TI products described in the resource. Other reproduction and display of these resources is prohibited. No license is granted to any other TI intellectual property right or to any third party intellectual property right. TI disclaims responsibility for, and you will fully indemnify TI and its representatives against, any claims, damages, costs, losses, and liabilities arising out of your use of these resources.

TI's products are provided subject to [TI's Terms of Sale](#) or other applicable terms available either on [ti.com](https://www.ti.com) or provided in conjunction with such TI products. TI's provision of these resources does not expand or otherwise alter TI's applicable warranties or warranty disclaimers for TI products.

TI objects to and rejects any additional or different terms you may have proposed.

Mailing Address: Texas Instruments, Post Office Box 655303, Dallas, Texas 75265  
Copyright © 2024, Texas Instruments Incorporated