

TPA2016D2 Passive Input Filter Design

Stephen Crump

Audio and Imaging Products

ABSTRACT

It is often necessary to filter audio signals to improve sound quality or limit output power. This can easily be done with a device like TPA2016D2. This paper explains how to design such a filter.

TPA2016D2 Input Filter Configuration

It is often necessary to filter audio signals in portable products to improve sound quality or selectively limit output power at different frequencies. This can easily be done with a device like TPA2016D2. This paper explains how to design such a filter in low-pass, high-pass or band-pass form. It also explains how to compensate for variation in amplifier input impedance as gain is adjusted. This variation, which is normal in TPA2016D2 and other variable-gain devices, can alter filter response. Generally this effect is small.

The following filter at TPA2016D2 input includes high-pass and low-pass sections to form a band-pass filter. Either section can be implemented without the other if only high-pass or low-pass is needed. The circuit includes the normal input capacitors that are required for DC isolation. Only one channel is shown.

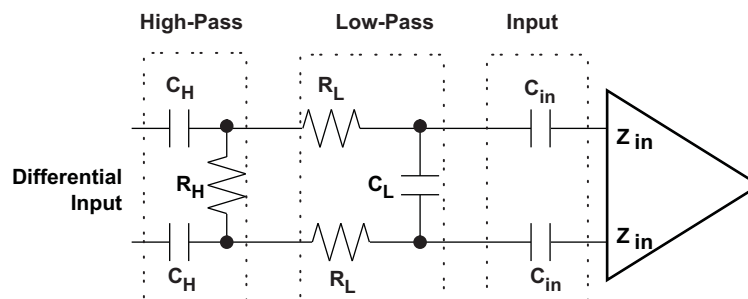


Figure 1. TPA2016D2 Bandpass Filter Configuration

Typically, the values for the filter components can be determined from the following rules and equations.

Input Capacitors for DC Isolation

- C_{in} is chosen to provide a low frequency rolloff with the minimum input impedance Z_{in} of TPA2016D2, which is $10k\Omega$ per input pin. (Minimum Z_{in} occurs at maximum gain. See the Appendix for details.)
 - Typically $C_{in} = 1\mu F$, providing maximum rolloff frequency f_{in} of 16Hz ([Equation 1](#)).

$$f_{in} = \frac{1}{(2\pi \times Z_{in} \times C_{in})} \quad (1)$$

This frequency falls as gain is reduced because Z_{in} increases.

High-Pass Filter

- R_H must be much smaller than minimum Z_{in} to prevent variation of the high-pass frequency as Z_{in} varies when gain is adjusted.
 - Typically R_H is around $1k\Omega$, providing maximum change in high-pass frequency of about 5%.
- C_H is chosen to provide the desired low-pass frequency f_H according to [Equation 2](#). The equation assumes gain is below maximum, and it does not correct for the effect of loading by Z_{in} . Multiplying by a factor of 2 adjusts for the use of 2 capacitors, one on each side of the input, effectively in series.

$$C_H = \frac{2}{(2\pi \times R_H \times f_H)} = \frac{1}{(\pi \times R_H \times f_H)} \quad (2)$$

- C_H also must be much larger than C_L to prevent loss of gain through the voltage divider formed by these capacitors.

Low-Pass Filter

- R_L also must be much smaller than minimum Z_{in} to prevent loss of gain at the maximum gain setting.
 - Typically R_L is around 400Ω , providing maximum loss of about 0.4dB, a negligible change.
- C_L is chosen to provide the desired low-pass frequency f_L according to Equation 3. Multiplying R_L by a factor of 2 adjusts for the use of 2 resistors, one on each side of the differential input, effectively in series.

$$C_L = \frac{1}{(2\pi \times 2R_L \times f_L)} = \frac{1}{(4\pi \times R_L \times f_L)} \quad (3)$$

These equations are essentially correct as long as R_H and R_L are much smaller than Z_{in} , the high-pass and low-pass frequencies are widely separated and the high-pass frequency is well above the maximum rolloff frequency of C_{in} and Z_{in} . If these conditions are not true, it is best to design by modeling with a simulator. In any case it is good to confirm a design by simulation and adjust it if necessary before implementing the filter.

DESIGN EXAMPLE 1 – HIGH AND LOW PASS FREQUENCIES WIDELY SEPARATED

Consider a design for a filter including a 100Hz high pass section and a 12kHz low pass section. The notes and equations above lead to the following values.

- Select $R_H = 1k\Omega$; then $C_H = 1 / (\pi \times 1k \times 100 \text{ Hz}) = 3.18 \mu\text{F}$. Use standard value $3.3\mu\text{F}$
- Select $R_L = 390\Omega$; then $C_L = 1 / (4\pi \times 390 \times 12 \text{ kHz}) = 17.0\text{nF}$. Use standard value 16nF .

The filter response is shown in Figure 2 with responses for separate high pass and low pass sections. There is slight mid-band loss of less than 0.3dB caused by a loss of about 0.1dB in the low pass section and by small interactions between the high and low pass circuit elements.

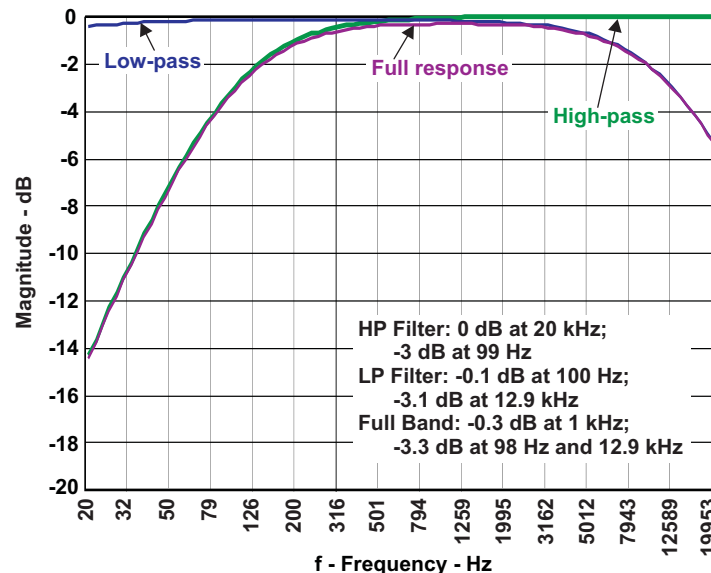


Figure 2. Input Filter Response, Widely Separated High and Low Pass Frequencies

High and low pass –3dB frequencies for the full band response are 98Hz and 12.9kHz. The error in the low pass response is caused by the large difference between the calculated value for C_L and the nearest available standard value, 16nF. If this error is acceptable the filter design is complete. If greater accuracy is necessary, R_L can be adjusted with a simulator like the one used here. R_H of 953 Ω and R_L of 432 Ω bring the high pass and low pass frequencies to 100Hz and 12.0kHz.

The circuit model in Figure 3 is used to simulate the response of this filter with a nominal Z_{in} , 30k Ω . The feedback resistors are given the same value to show the net response of the filter without added gain or loss. The simulator used here is called TINA. It is available at no charge from the TI website, at <http://focus.ti.com/docs/toolsw/folders/print/tina-ti.html>.

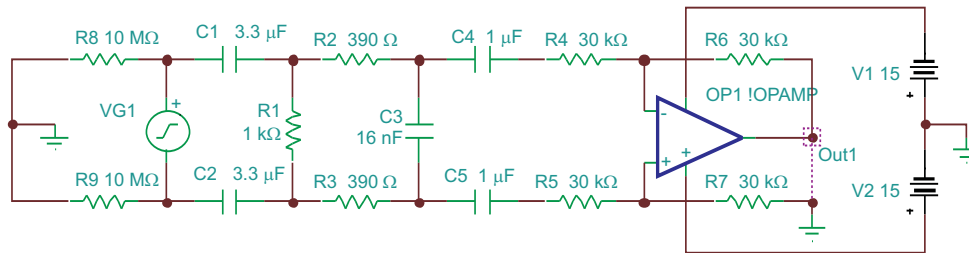


Figure 3. Circuit Model, Widely Separated High and Low Pass Frequencies

Varying gain in TPA2016D2 will change the response slightly because input impedance varies with gain. Filter response with maximum, nominal and minimum gain is shown in Figure 4.

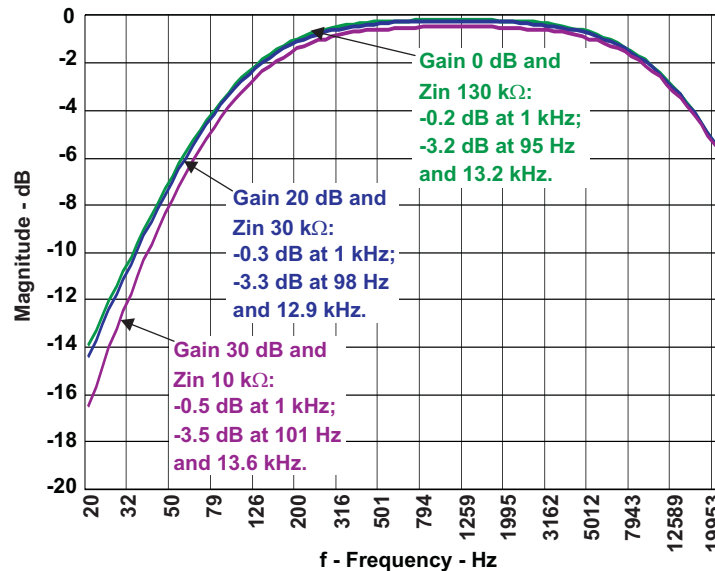


Figure 4. Input Filter Response Variation with Gain and Input Impedance

Variation is generally only a couple of tenths of a dB. The primary cause of differences is variation in the pole created by the input capacitors and input impedance. If it is necessary to keep frequency response more constant the value of the input capacitors can be increased to reduce the frequency of this pole. If it is necessary to keep filter gain more constant filter impedances must be reduced so amplifier input impedance produces less of a load on the filter output. Normally this is not a great issue, because loss of gain at minimum input impedance is generally small enough to ignore.

DESIGN EXAMPLE 2 – HIGH AND LOW PASS FREQUENCIES SPACED CLOSER TOGETHER.

Consider another design for a filter including an 800Hz high pass section and a 10kHz low pass section. The notes and equations above lead to the following values.

- Select $R_H = 1\text{k}\Omega$; then $C_H = 1 / (\pi \times 1\text{k} \times 800\text{Hz}) = 398\text{nF}$. Use standard value 390nF.
- Select $R_L = 390\Omega$; then $C_L = 1 / (4\pi \times 390 \times 10\text{kHz}) = 20.4\text{nF}$. Use standard value 22nF.

The filter response is shown in [Figure 5](#) with separate responses for individual high pass and low pass sections. High and low pass -3dB frequencies for the full band response are 660Hz and 11.9kHz , so there is significant error in these frequencies. There is also a loss of nearly 2dB at the center of the pass band. Some of the frequency errors are caused by differences between calculated capacitances and actual capacitances, but most of the error is the result of interaction between the filter sections. It is possible to correct most of the frequency errors by adjusting component values, but clearly a simulator is required for an accurate response.

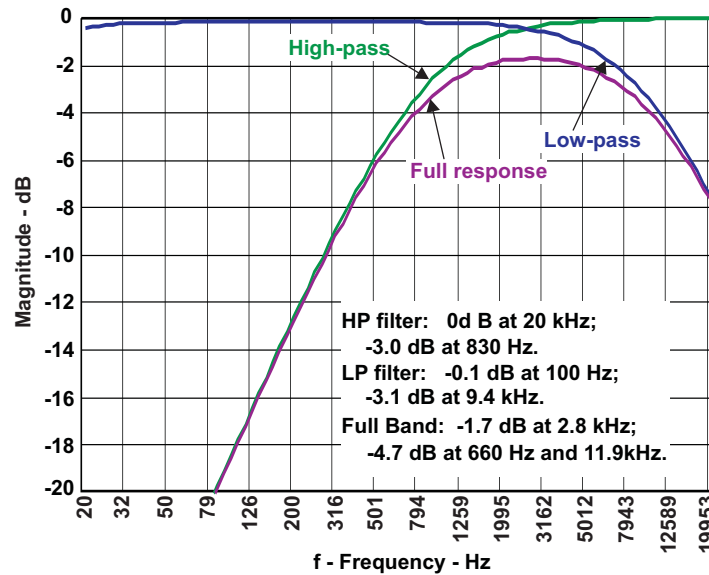


Figure 5. Input Filter Response, Closely Spaced High and Low Pass Frequencies

The circuit model shown in [Figure 6](#) is used to simulate the response of this filter with a nominal Z_{in} , $30\text{k}\Omega$. Again the feedback resistors are given the same value to show the net response of the filter without added gain or loss.

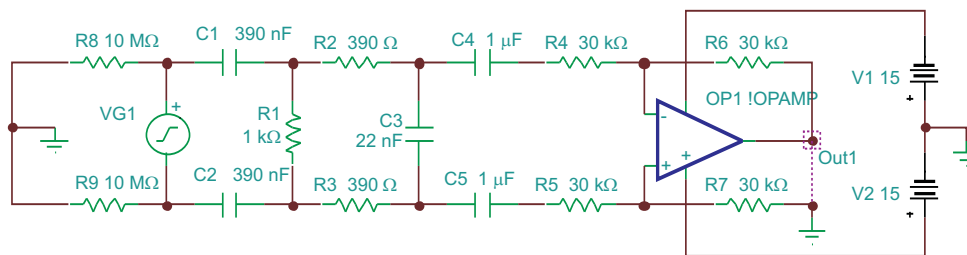


Figure 6. Circuit Model, Closely Spaced High and Low Pass Frequencies

Appendix A TPA2016D2 INPUT IMPEDANCE

Nominal input impedance of TPA2016D2 varies with gain as shown in [Figure A-1](#), from 10kΩ per input pin at maximum gain to 125kΩ per input pin at minimum gain. The simplest high-pass filter configuration is a pair of capacitors in series with the inputs, but the frequency of such a filter would vary by a factor of 12.5 from minimum to maximum gain. If this variation is tolerable the circuit simplifies in this way.

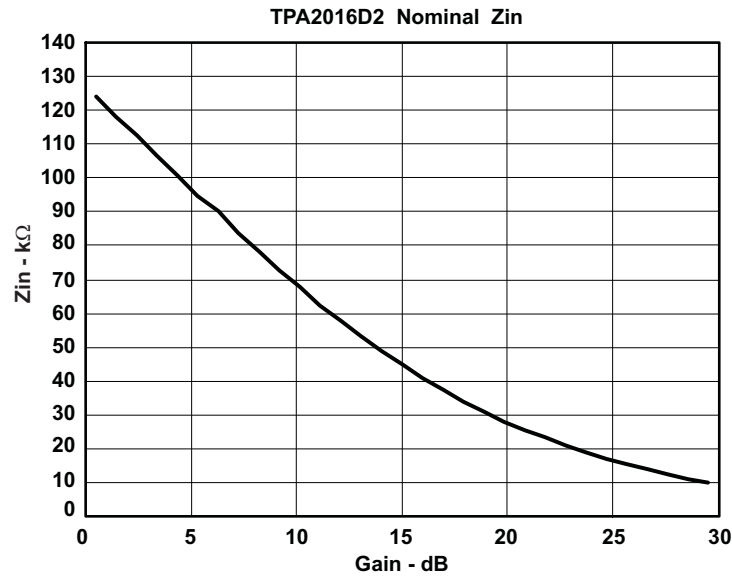


Figure A-1. TPA2016D2 Nominal Input Impedance

IMPORTANT NOTICE

Texas Instruments Incorporated and its subsidiaries (TI) reserve the right to make corrections, modifications, enhancements, improvements, and other changes to its products and services at any time and to discontinue any product or service without notice. Customers should obtain the latest relevant information before placing orders and should verify that such information is current and complete. All products are sold subject to TI's terms and conditions of sale supplied at the time of order acknowledgment.

TI warrants performance of its hardware products to the specifications applicable at the time of sale in accordance with TI's standard warranty. Testing and other quality control techniques are used to the extent TI deems necessary to support this warranty. Except where mandated by government requirements, testing of all parameters of each product is not necessarily performed.

TI assumes no liability for applications assistance or customer product design. Customers are responsible for their products and applications using TI components. To minimize the risks associated with customer products and applications, customers should provide adequate design and operating safeguards.

TI does not warrant or represent that any license, either express or implied, is granted under any TI patent right, copyright, mask work right, or other TI intellectual property right relating to any combination, machine, or process in which TI products or services are used. Information published by TI regarding third-party products or services does not constitute a license from TI to use such products or services or a warranty or endorsement thereof. Use of such information may require a license from a third party under the patents or other intellectual property of the third party, or a license from TI under the patents or other intellectual property of TI.

Reproduction of TI information in TI data books or data sheets is permissible only if reproduction is without alteration and is accompanied by all associated warranties, conditions, limitations, and notices. Reproduction of this information with alteration is an unfair and deceptive business practice. TI is not responsible or liable for such altered documentation. Information of third parties may be subject to additional restrictions.

Resale of TI products or services with statements different from or beyond the parameters stated by TI for that product or service voids all express and any implied warranties for the associated TI product or service and is an unfair and deceptive business practice. TI is not responsible or liable for any such statements.

TI products are not authorized for use in safety-critical applications (such as life support) where a failure of the TI product would reasonably be expected to cause severe personal injury or death, unless officers of the parties have executed an agreement specifically governing such use. Buyers represent that they have all necessary expertise in the safety and regulatory ramifications of their applications, and acknowledge and agree that they are solely responsible for all legal, regulatory and safety-related requirements concerning their products and any use of TI products in such safety-critical applications, notwithstanding any applications-related information or support that may be provided by TI. Further, Buyers must fully indemnify TI and its representatives against any damages arising out of the use of TI products in such safety-critical applications.

TI products are neither designed nor intended for use in military/aerospace applications or environments unless the TI products are specifically designated by TI as military-grade or "enhanced plastic." Only products designated by TI as military-grade meet military specifications. Buyers acknowledge and agree that any such use of TI products which TI has not designated as military-grade is solely at the Buyer's risk, and that they are solely responsible for compliance with all legal and regulatory requirements in connection with such use.

TI products are neither designed nor intended for use in automotive applications or environments unless the specific TI products are designated by TI as compliant with ISO/TS 16949 requirements. Buyers acknowledge and agree that, if they use any non-designated products in automotive applications, TI will not be responsible for any failure to meet such requirements.

Following are URLs where you can obtain information on other Texas Instruments products and application solutions:

Products

Amplifiers	amplifier.ti.com
Data Converters	dataconverter.ti.com
DLP® Products	www.dlp.com
DSP	dsp.ti.com
Clocks and Timers	www.ti.com/clocks
Interface	interface.ti.com
Logic	logic.ti.com
Power Mgmt	power.ti.com
Microcontrollers	microcontroller.ti.com
RFID	www.ti-rfid.com
RF/IF and ZigBee® Solutions	www.ti.com/lprf

Applications

Audio	www.ti.com/audio
Automotive	www.ti.com/automotive
Broadband	www.ti.com/broadband
Digital Control	www.ti.com/digitalcontrol
Medical	www.ti.com/medical
Military	www.ti.com/military
Optical Networking	www.ti.com/opticalnetwork
Security	www.ti.com/security
Telephony	www.ti.com/telephony
Video & Imaging	www.ti.com/video
Wireless	www.ti.com/wireless

Mailing Address: Texas Instruments, Post Office Box 655303, Dallas, Texas 75265
Copyright © 2009, Texas Instruments Incorporated