

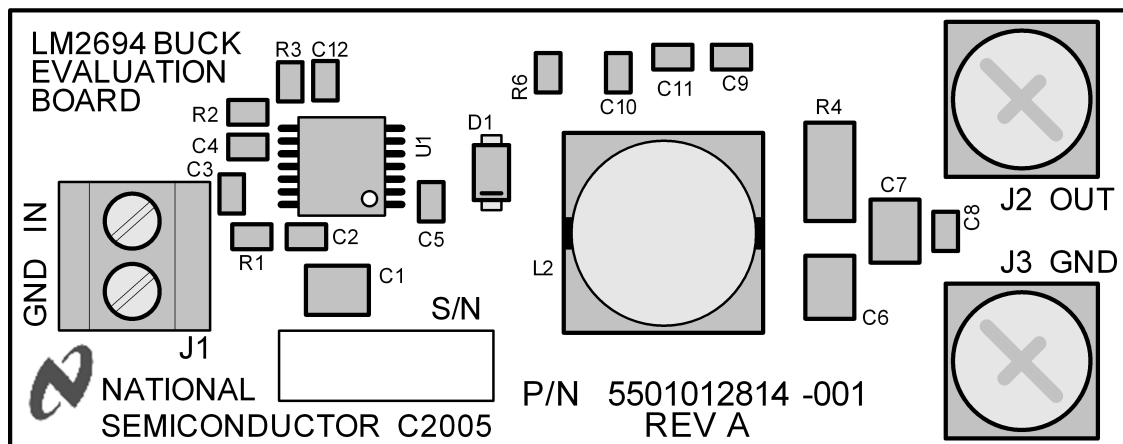
## AN-1472 LM2694 Evaluation Board

### 1 Introduction

The LM2694EVAL evaluation board provides the design engineer with a fully functional buck regulator, employing the constant on-time (COT) operating principle. This evaluation board provides a 5 V output over an input range of 8 V - 30 V. The circuit delivers load currents to 0.5A, with current limit set at  $\approx 0.65A$ . The board is populated with all external components except R4, C6, C9 and C12. These components provide options for managing the output ripple voltage as described later in this document.

The board's specification are:

- Input Voltage: 8V to 30V
- Output Voltage: 5V
- Maximum load current: 0.5A
- Minimum load current: 0A
- Current Limit: 0.65A
- Measured Efficiency: 93.4% ( $V_{IN} = 8V$ ,  $I_{OUT} = 200\text{ mA}$ )
- Nominal Switching Frequency: 250 kHz
- Size: 2.25 in. x 0.88 in. x 0.55 in



**Figure 1. Evaluation Board - Top Side**

### 2 Theory of Operation

Refer to the evaluation board schematic in [Figure 5](#). When the circuit is in regulation, the buck switch is on each cycle for a time determined by R1 and  $V_{IN}$  according to [Equation 1](#):

$$t_{ON} = \frac{1.14 \times 10^{-10} \times (R1 + 1.4k)}{(V_{IN} - 1.5V)} + 95\text{ ns} \quad (1)$$

The on-time of this evaluation board ranges from  $\approx 2600$  ns at  $V_{IN} = 8$  V, to  $\approx 660$  ns at  $V_{IN} = 30$  V. The on-time varies inversely with  $V_{IN}$  to maintain a nearly constant switching frequency. At the end of each on-time the Minimum Off-Timer ensures the buck switch is off for at least 265 ns. In normal operation, the off-time is much longer. During the off-time, the output capacitor (C7) is discharged by the load current. When the output voltage falls sufficiently that the voltage at FB is below 2.5V, the regulation comparator initiates a new on-time period. For stable, fixed frequency operation,  $\approx 25$  mV of ripple is required at FB to switch the regulation comparator. For a detailed block diagram and a complete description of the various functional blocks, see the *LM2694 30V, 600 mA Step Down Switching Regulator Data Sheet* ([SNVS444](#)).

### 3 Board Layout and Probing

The pictorial in [Figure 1](#) shows the placement of the circuit components. The following should be kept in mind when the board is powered:

- When operating at high input voltage and high load current, forced air flow is recommended.
- The LM2694, and diode D1 may be hot to the touch when operating at high input voltage and high load current.
- Use CAUTION when probing the circuit at high input voltages to prevent injury, as well as possible damage to the circuit.
- At maximum load current (0.5A), the wire size and length used to connect the load becomes important. Ensure there is not a significant drop in the wires between this evaluation board and the load.

### 4 Board Connection/Start-up

The input connections are made to the J1 connector. The load is connected to the OUT and GND terminals. Ensure the wires are adequately sized for the intended load current. Before start-up a voltmeter should be connected to the input terminals, and to the output terminals. The load current should be monitored with an ammeter or a current probe. It is recommended that the input voltage be increased gradually to 8 V, at which time the output voltage should be 5 V. If the output voltage is correct with 8 V at  $V_{IN}$ , then increase the input voltage as desired and proceed with evaluating the circuit.

### 5 Output Ripple Control

The LM2694 requires a minimum of 25 mVp-p ripple at the FB pin, in phase with the switching waveform at the SW pin, for proper operation. In the simplest configuration that ripple is derived from (see [Figure 4](#)), the ripple at the output, generated by the inductor's ripple current flowing through R4. That ripple voltage is attenuated by the feedback resistors, requiring that the ripple amplitude at OUT be higher than the minimum of 25 mVp-p by the gain factor. Options for reducing the output ripple are discussed below, and the results are shown in the graph of [Figure 8](#).

#### 5.1 Minimum Output Ripple

This evaluation board is supplied configured for minimum ripple at OUT. The output ripple, that ranges from 2 mVp-p at  $V_{IN} = 8$  V to 3 mVp-p at  $V_{IN} = 30$  V, is determined primarily by the ESR of output capacitor (C7) and the inductor's ripple current that ranges from 60 mAp-p to 100 mAp-p over the input voltage range. The ripple voltage required by the FB pin is generated by R6, C10 and C11 since the SW pin switches from -1 V to  $V_{IN}$ , and the right end of C10 is a virtual ground. The values for R6 and C10 are chosen to generate a 30-40 mVp-p triangle waveform at their junction. That triangle wave is then coupled to the FB pin through C11. [Equation 2](#) The following procedure is used to calculate values for R6, C10 and C11:

- Calculate the voltage  $V_A$  using [Equation 2](#):

$$V_A = V_{OUT} - (V_{SW} \times (1 - (V_{OUT}/V_{IN}))) \quad (2)$$

where  $V_{SW}$  is the absolute value of the voltage at the SW pin during the off-time (typically 1V), and  $V_{IN}$  is the minimum input voltage. For this circuit  $V_A$  calculates to 4.63V. This is the DC voltage at the R6/C10 junction, and is used in [Equation 3](#).

- Calculate the R6 x C10 product:

$$R6 \times C10 = \frac{(V_{IN} - V_A) \times t_{ON}}{\Delta V} \quad (3)$$

where  $t_{ON}$  is the maximum on-time ( $\approx 2600$  ns),  $V_{IN}$  is the minimum input voltage, and  $\Delta V$  is the desired ripple amplitude at the R6/C10 junction, 30 mVp-p for this example.

$$R6 \times C10 = \frac{(8V - 4.63V) \times 2600 \text{ ns}}{0.03V} = 2.9 \times 10^{-4} \tag{4}$$

R6 and C10 are then chosen from standard value components to satisfy the above product. For example, C10 can be 2700 pF requiring R6 to be 110 kΩ. C11 is chosen to be 0.01 μF, large compared to C10. The circuit as supplied on this EVB is shown in Figure 2.

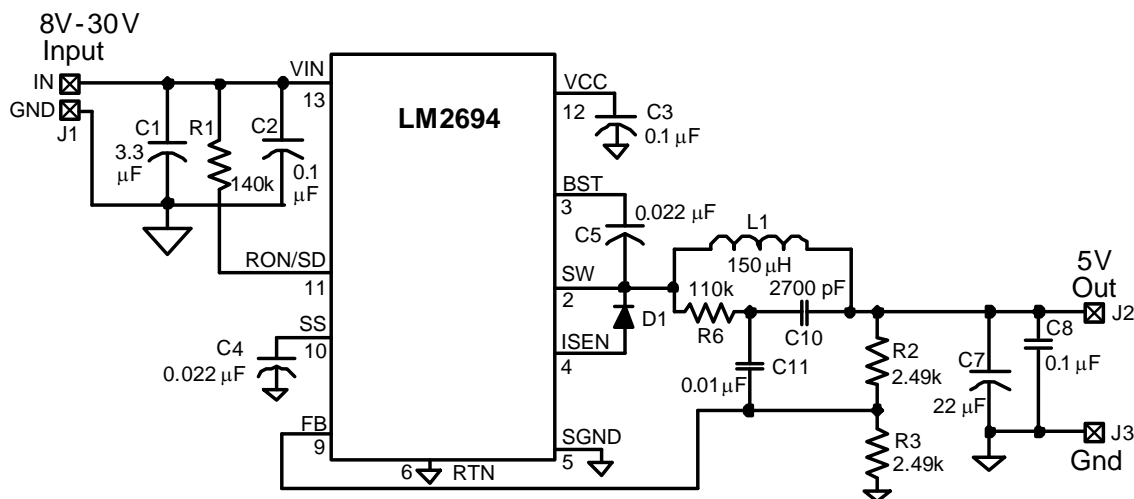


Figure 2. Minimum Output Ripple Configuration

## 5.2 Intermediate Ripple Level Configuration

This configuration generates more ripple at the output than the above configuration, but uses one less capacitor. If some ripple can be tolerated in the application, this configuration is slightly more economical, and simpler. R4 and C6 and C9 are used instead of R6, C7, C8, C10 and C11, as shown in Figure 3.

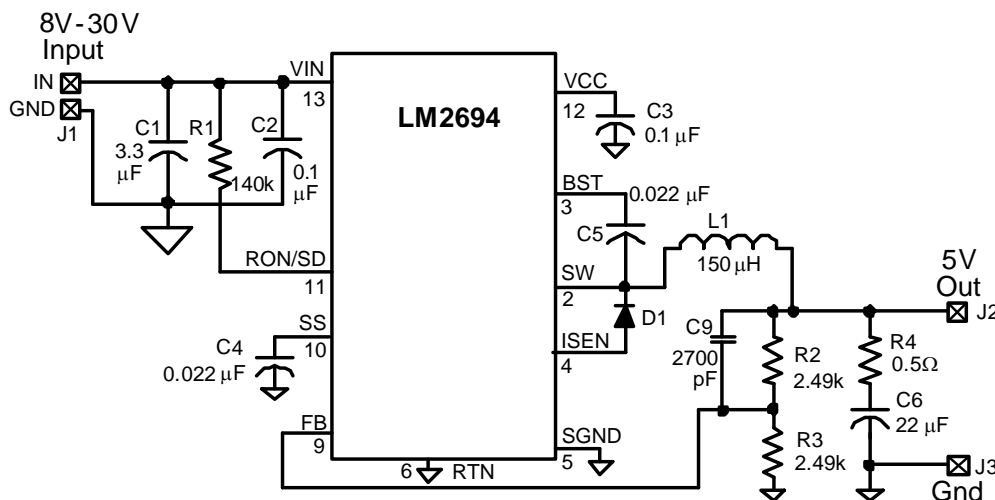


Figure 3. Intermediate Ripple Configuration

R4 is chosen to generate  $\geq 25$  mV - 30 mVp-p at the output, knowing that the minimum ripple current in this circuit is 60 mA-p-p at minimum  $V_{IN}$ . C9 couples that ripple to the FB pin without the attenuation of the feedback resistors. C9's minimum value is calculated from Equation 5:

$$C9 = \frac{t_{ON(max)}}{(R2//R3)} \quad (5)$$

where  $t_{ON(max)}$  is the maximum on-time (at minimum  $V_{IN}$ ), and  $R2//R3$  is the equivalent parallel value of the feedback resistors. For this evaluation board,  $t_{ON(max)}$  is approximately 2600 ns, and  $R2//R3 = 1.25$  k $\Omega$ , and C9 calculates to a minimum of 2080 pF. The resulting ripple at the output ranges from 30 mVp-p to 80 mVp-p over the input voltage range.

### 5.3 Lowest Cost Configuration

This configuration is the same as option B above, but without C9. Since 25 mVp-p are required at the FB pin, R4 is chosen to generate 50 mV at OUT, knowing that the minimum ripple current in this circuit is 60 mA-p-p at minimum  $V_{IN}$ . To allow for tolerances, 1.0  $\Omega$  is used for R4. The resulting ripple at OUT ranges from  $\approx 60$  mVp-p to  $\approx 100$  mVp-p over the input voltage range. If the application can tolerate this ripple level, this is the most economical solution. The circuit is shown in Figure 4. An alternative to this circuit is to eliminate R4 if C6 has sufficient ESR.

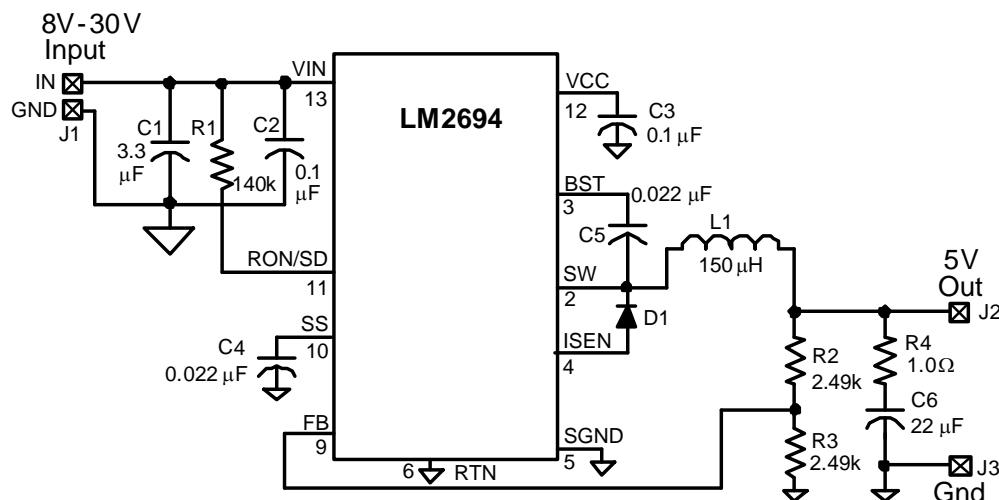


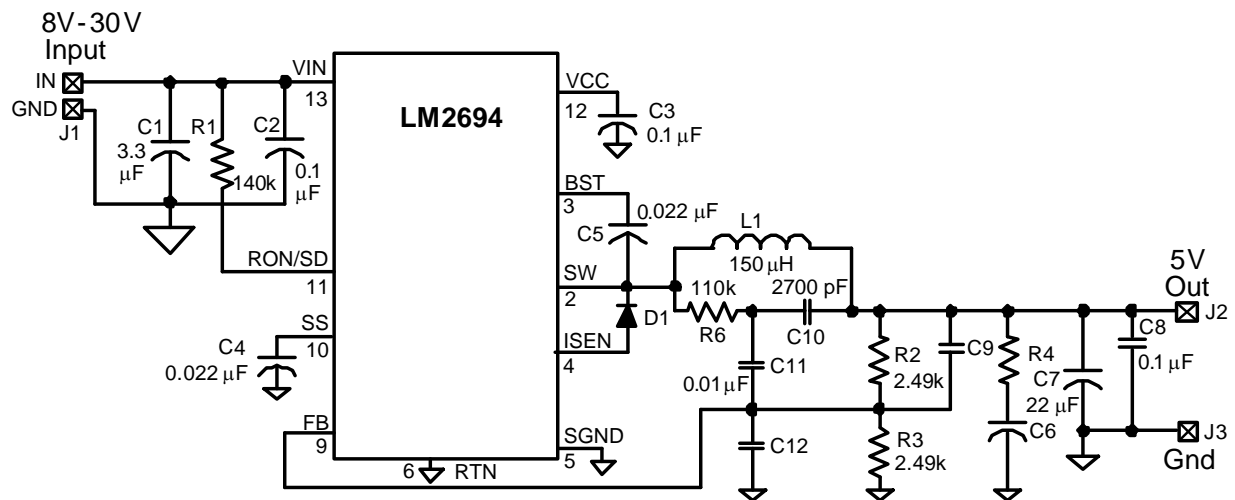
Figure 4. Lowest Cost Configuration

## 6 Minimum Load Current

The LM2694 requires a minimum load current of  $\approx 500$   $\mu$ A to ensure the boost capacitor (C5) is recharged sufficiently during each off-time. In this evaluation board, the minimum load current is provided by the feedback resistor (R2, R3), allowing the board's minimum load current to be specified at zero.

## 7 Circuit Performance

Figure 6 through Figure 9 indicate the performance of this evaluation board. Figure 10 indicates waveforms at various points within the circuit and Figure 11 indicates how the output responds to the load current changing between 200 mA and 400 mA. Figure 12 indicates the preferred method for using a scope probe to measure output ripple and transient waveforms. The probe's ground ring touches the output ground terminal (J3) and the probe's tip touches the 5V output terminal (J2). This method eliminates noise and switching spikes which the probe's ground lead would pick up if it were used.


**Figure 5. Evaluation Board Schematic**
**Table 1. Bill of Materials (BOM)**

Item	Description	Mfg Part Number	Package	Value
C1	Ceramic Capacitor	TDK C3225X7R1H335M	1210	3.3 $\mu$ F, 50 V
C2, 3, 8	Ceramic Capacitor	TDK C2012X7R2A104M	0805	0.1 $\mu$ F, 100 V
C4, 5	Ceramic Capacitor	TDK C2012X7R2A223M	0805	0.022 $\mu$ F, 100 V
C6		Unpopulated	1210	
C7	Ceramic Capacitor	TDK C3225X7R1C226M	1210	22 $\mu$ F, 16 V
C9		Unpopulated	0805	
C10	Ceramic Capacitor	TDK C2012X7R2A272M	0805	2700 pF, 100 V
C11	Ceramic Capacitor	TDK C2012X7R2A103M	0805	0.01 $\mu$ F, 100 V
C12	Ceramic Capacitor	Unpopulated	0805	
D1	Schottky Diode	Diodes Inc. DFSL160	Power DI 123	60 V, 1A
L1	Inductor	TDK SLF10145-151MR79, or Cooper Bussman DR74-151	10 mm x 10 mm	150 $\mu$ H, 0.8A
R1	Resistor	Vishay CRCW08051413F	0805	140 k $\Omega$
R2, R3	Resistor	Vishay CRCW08052491F	0805	2.49 k $\Omega$
R4	Resistor	Unpopulated	2010	
R6	Resistor	Vishay CRCW08051103F	0805	110 k $\Omega$
U1	Switching Regulator	Texas Instruments LM2694MT	TSSOP-14	

## 8 Circuit Performance

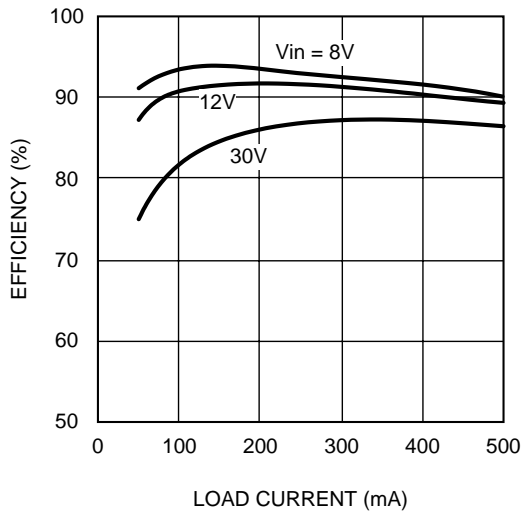


Figure 6. Efficiency vs Load Current

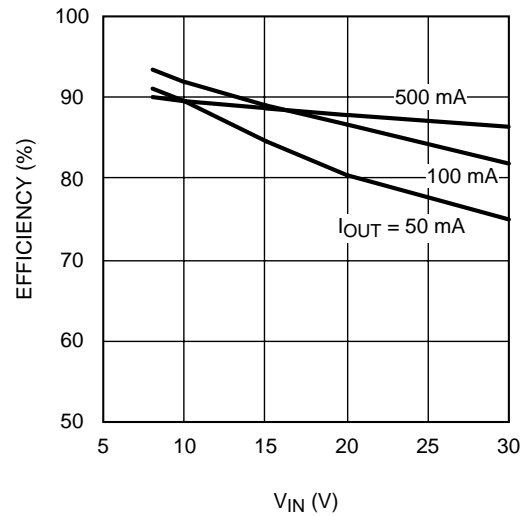


Figure 7. Efficiency vs Input Voltage

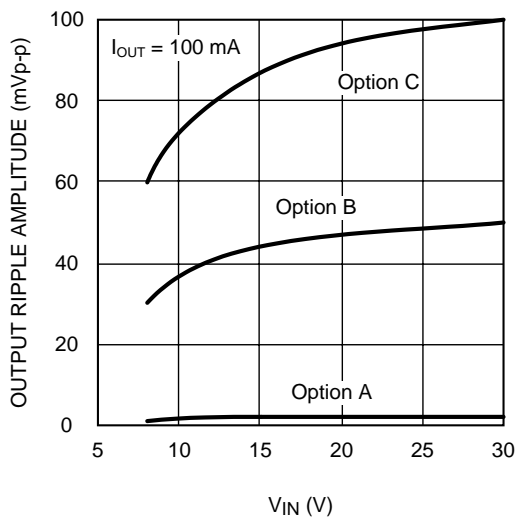


Figure 8. Output Voltage Ripple

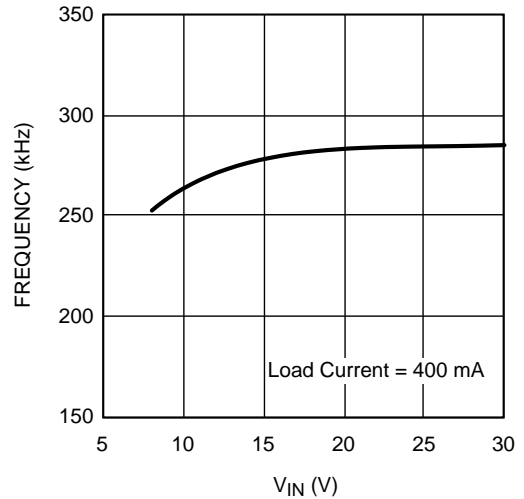


Figure 9. Switching Frequency vs. Input Voltage

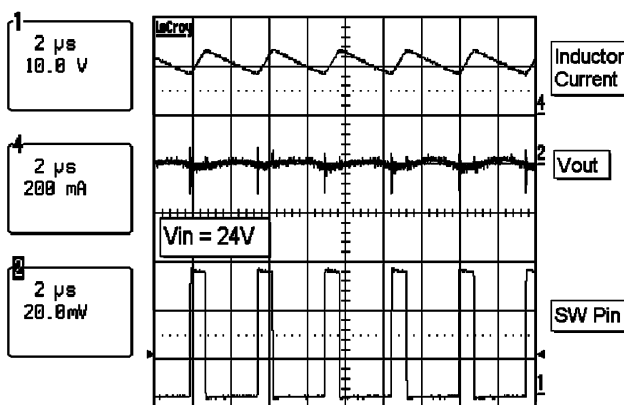


Figure 10. Circuit Waveforms

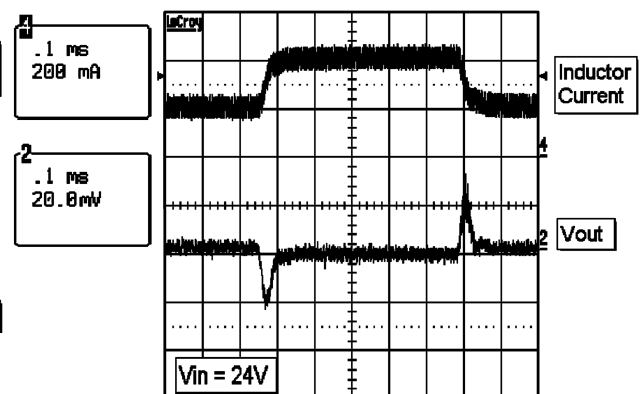


Figure 11. Transient Response

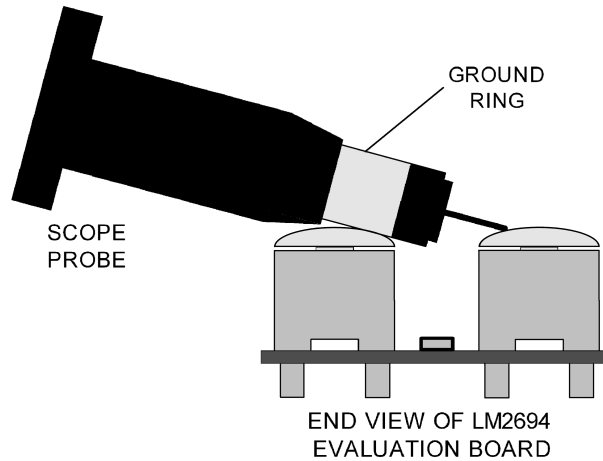


Figure 12. Preferred Method for Measuring Output Waveforms

9 PCB Layout

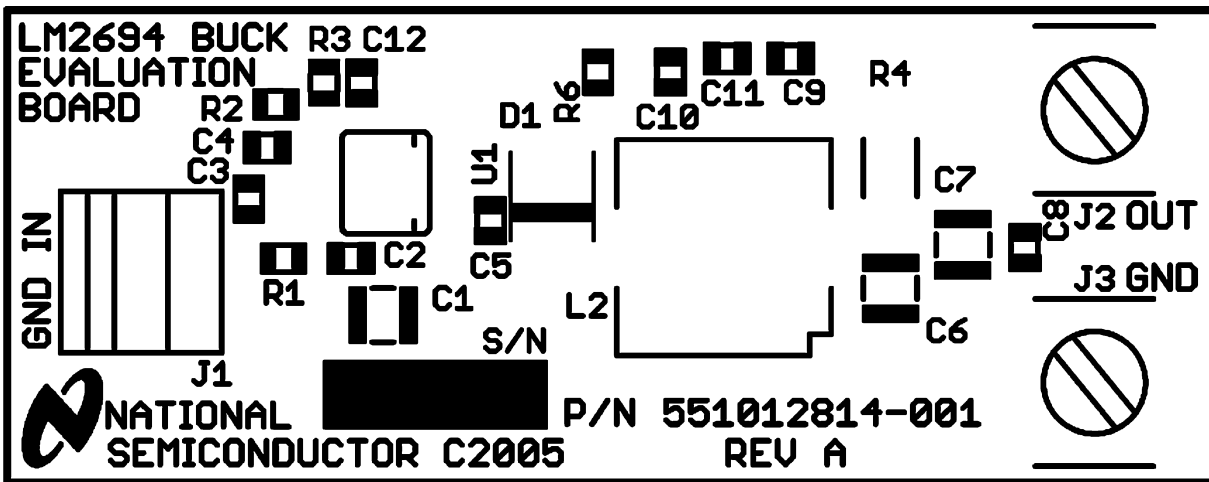


Figure 13. Board Silkscreen

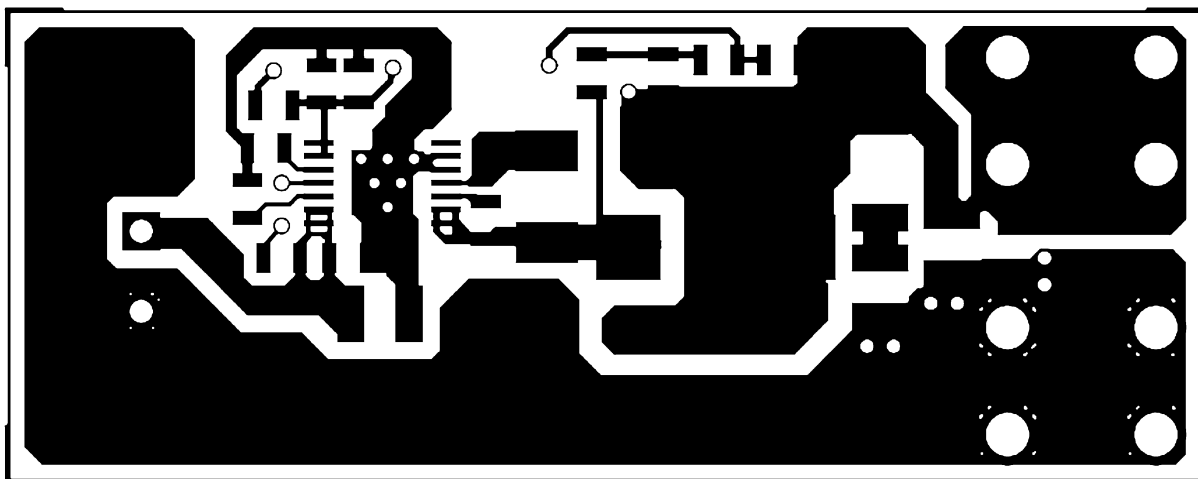


Figure 14. Board Top Layer

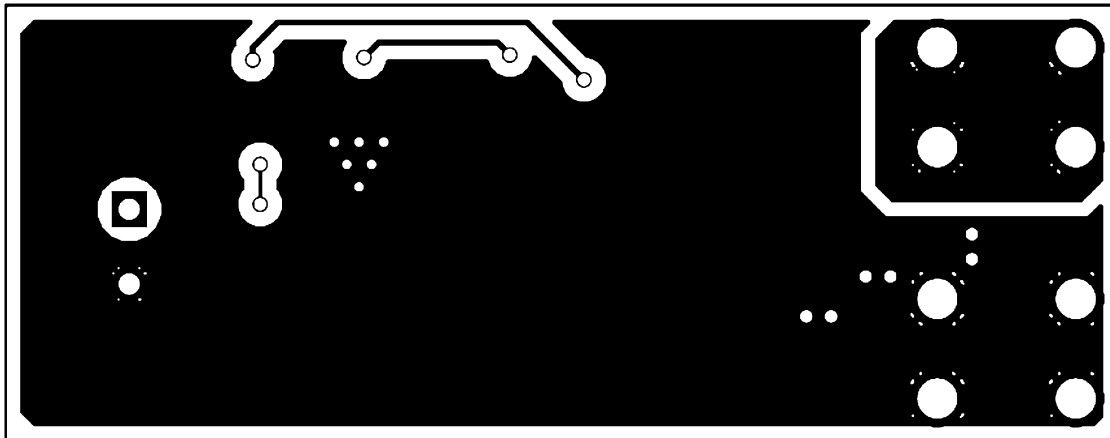


Figure 15. Board Bottom Layer (viewed from top)



## IMPORTANT NOTICE

Texas Instruments Incorporated and its subsidiaries (TI) reserve the right to make corrections, enhancements, improvements and other changes to its semiconductor products and services per JESD46, latest issue, and to discontinue any product or service per JESD48, latest issue. Buyers should obtain the latest relevant information before placing orders and should verify that such information is current and complete. All semiconductor products (also referred to herein as "components") are sold subject to TI's terms and conditions of sale supplied at the time of order acknowledgment.

TI warrants performance of its components to the specifications applicable at the time of sale, in accordance with the warranty in TI's terms and conditions of sale of semiconductor products. Testing and other quality control techniques are used to the extent TI deems necessary to support this warranty. Except where mandated by applicable law, testing of all parameters of each component is not necessarily performed.

TI assumes no liability for applications assistance or the design of Buyers' products. Buyers are responsible for their products and applications using TI components. To minimize the risks associated with Buyers' products and applications, Buyers should provide adequate design and operating safeguards.

TI does not warrant or represent that any license, either express or implied, is granted under any patent right, copyright, mask work right, or other intellectual property right relating to any combination, machine, or process in which TI components or services are used. Information published by TI regarding third-party products or services does not constitute a license to use such products or services or a warranty or endorsement thereof. Use of such information may require a license from a third party under the patents or other intellectual property of the third party, or a license from TI under the patents or other intellectual property of TI.

Reproduction of significant portions of TI information in TI data books or data sheets is permissible only if reproduction is without alteration and is accompanied by all associated warranties, conditions, limitations, and notices. TI is not responsible or liable for such altered documentation. Information of third parties may be subject to additional restrictions.

Resale of TI components or services with statements different from or beyond the parameters stated by TI for that component or service voids all express and any implied warranties for the associated TI component or service and is an unfair and deceptive business practice. TI is not responsible or liable for any such statements.

Buyer acknowledges and agrees that it is solely responsible for compliance with all legal, regulatory and safety-related requirements concerning its products, and any use of TI components in its applications, notwithstanding any applications-related information or support that may be provided by TI. Buyer represents and agrees that it has all the necessary expertise to create and implement safeguards which anticipate dangerous consequences of failures, monitor failures and their consequences, lessen the likelihood of failures that might cause harm and take appropriate remedial actions. Buyer will fully indemnify TI and its representatives against any damages arising out of the use of any TI components in safety-critical applications.

In some cases, TI components may be promoted specifically to facilitate safety-related applications. With such components, TI's goal is to help enable customers to design and create their own end-product solutions that meet applicable functional safety standards and requirements. Nonetheless, such components are subject to these terms.

No TI components are authorized for use in FDA Class III (or similar life-critical medical equipment) unless authorized officers of the parties have executed a special agreement specifically governing such use.

Only those TI components which TI has specifically designated as military grade or "enhanced plastic" are designed and intended for use in military/aerospace applications or environments. Buyer acknowledges and agrees that any military or aerospace use of TI components which have **not** been so designated is solely at the Buyer's risk, and that Buyer is solely responsible for compliance with all legal and regulatory requirements in connection with such use.

TI has specifically designated certain components as meeting ISO/TS16949 requirements, mainly for automotive use. In any case of use of non-designated products, TI will not be responsible for any failure to meet ISO/TS16949.

### Products

Audio	<a href="http://www.ti.com/audio">www.ti.com/audio</a>
Amplifiers	<a href="http://amplifier.ti.com">amplifier.ti.com</a>
Data Converters	<a href="http://dataconverter.ti.com">dataconverter.ti.com</a>
DLP® Products	<a href="http://www.dlp.com">www.dlp.com</a>
DSP	<a href="http://dsp.ti.com">dsp.ti.com</a>
Clocks and Timers	<a href="http://www.ti.com/clocks">www.ti.com/clocks</a>
Interface	<a href="http://interface.ti.com">interface.ti.com</a>
Logic	<a href="http://logic.ti.com">logic.ti.com</a>
Power Mgmt	<a href="http://power.ti.com">power.ti.com</a>
Microcontrollers	<a href="http://microcontroller.ti.com">microcontroller.ti.com</a>
RFID	<a href="http://www.ti-rfid.com">www.ti-rfid.com</a>
OMAP Applications Processors	<a href="http://www.ti.com/omap">www.ti.com/omap</a>
Wireless Connectivity	<a href="http://www.ti.com/wirelessconnectivity">www.ti.com/wirelessconnectivity</a>

### Applications

Automotive and Transportation	<a href="http://www.ti.com/automotive">www.ti.com/automotive</a>
Communications and Telecom	<a href="http://www.ti.com/communications">www.ti.com/communications</a>
Computers and Peripherals	<a href="http://www.ti.com/computers">www.ti.com/computers</a>
Consumer Electronics	<a href="http://www.ti.com/consumer-apps">www.ti.com/consumer-apps</a>
Energy and Lighting	<a href="http://www.ti.com/energy">www.ti.com/energy</a>
Industrial	<a href="http://www.ti.com/industrial">www.ti.com/industrial</a>
Medical	<a href="http://www.ti.com/medical">www.ti.com/medical</a>
Security	<a href="http://www.ti.com/security">www.ti.com/security</a>
Space, Avionics and Defense	<a href="http://www.ti.com/space-avionics-defense">www.ti.com/space-avionics-defense</a>
Video and Imaging	<a href="http://www.ti.com/video">www.ti.com/video</a>

### TI E2E Community

[e2e.ti.com](http://e2e.ti.com)