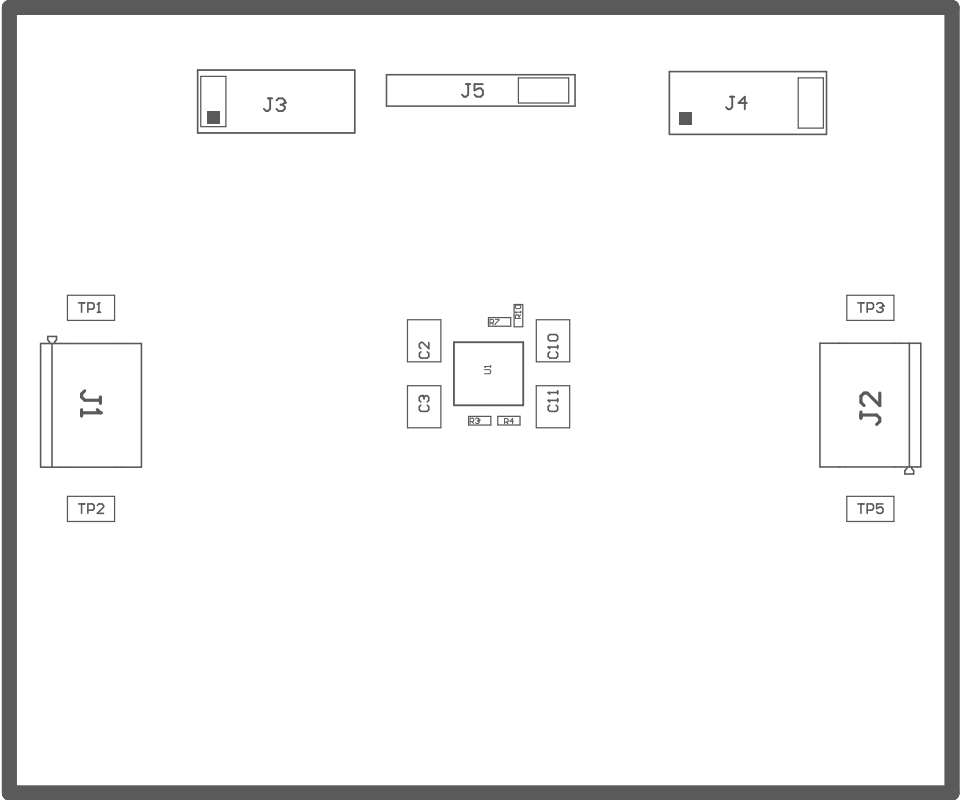
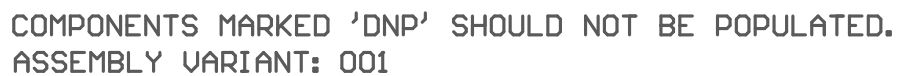


ZZ2 ■ These assemblies must be clean and free from flux and all contaminants. Use of no clean flux is not acceptable.  
ZZ3 ■ These assemblies must comply with workmanship standards IPC-A-610 Class 2, unless otherwise specified.  
ZZ4 ■ Place SH-J1 on J3 pins 1 and 2  
ZZ5 ■ Place SH-J2 on J4 pins 9 and 10  
ZZ6 ■ Place SH-J3 on J5 pins 5 and 6



COMPONENTS MARKED 'DNP' SHOULD NOT BE POPULATED.  
ASSEMBLY VARIANT: 001

PCB VIEWED FROM TOP SIDE	BOARD #: BSR210	REV: A	SUN REV: Not in version control
	TID #: N/A		
PLOT NAME = Top Assembly Drawing	GENERATED : 2/3/2022 3:08:41 PM	TEXAS INSTRUMENTS	



PCB VIEWED FROM BOTTOM SIDE	BOARD #: BSR210	REV: A	SUN REV: Not in version control
	TID #: N/A		
PLOT NAME = Bottom Assembly Drawing	GENERATED : 2/3/2022 3:08:41 PM		TEXAS INSTRUMENTS