

## ExpressCard™ POWER INTERFACE SWITCH

Check for Samples: [TPS2231](#) [TPS2236](#)

### FEATURES

- Meets the ExpressCard™ Standard (ExpressCard|34 or ExpressCard|54)
- Compliant with the ExpressCard™ Compliance Checklists
- Fully Satisfies the ExpressCard™ Implementation Guidelines
- Supports Systems with WAKE Function
- TTL-Logic Compatible Inputs
- Short Circuit and Thermal Protection
- –40°C to 85°C Ambient Operating Temperature Range

- Available in a 20-pin TSSOP, a 20-pin QFN, or 24-pin PowerPAD™ HTSSOP (Single)
- Available in a 32-pin PowerPAD™ HTSSOP (Dual)

### APPLICATIONS

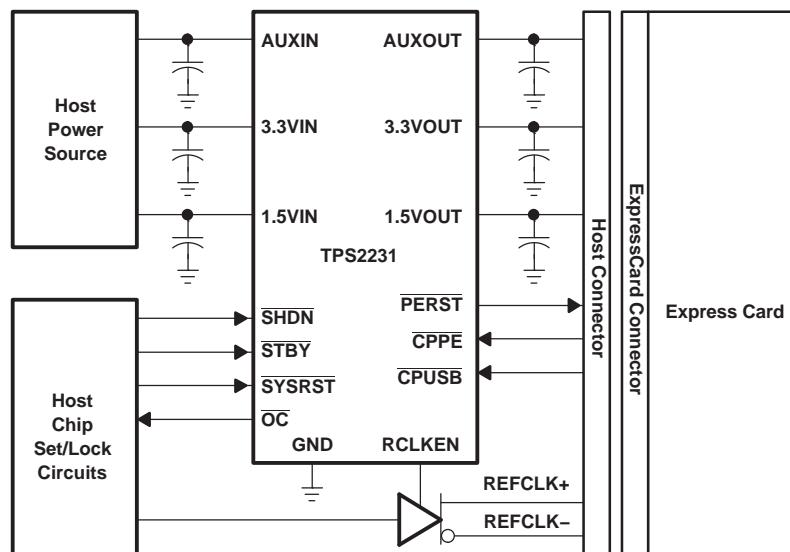
- Notebook Computers
- Desktop Computers
- Personal Digital Assistants (PDAs)
- Digital Cameras
- TV and Set Top Boxes

### DESCRIPTION

The TPS2231 and TPS2236 ExpressCard power interface switches provide the total power management solution required by the ExpressCard specification. The TPS2231 and TPS2236 ExpressCard power interface switches distribute 3.3 V, AUX, and 1.5 V to the ExpressCard socket. Each voltage rail is protected with integrated current-limiting circuitry.

The TPS2231 supports systems with single-slot ExpressCard|34 or ExpressCard|54 sockets. The TPS2236 supports systems with dual-slot ExpressCard sockets.

End equipment for the TPS2231 and TPS2236 include notebook computers, desktop computers, personal digital assistants (PDAs), and digital cameras.



Please be aware that an important notice concerning availability, standard warranty, and use in critical applications of Texas Instruments semiconductor products and disclaimers thereto appears at the end of this data sheet.

PowerPAD is a trademark of Texas Instruments.

ExpressCard is a trademark of Personal Computer Memory Card International Association.



This integrated circuit can be damaged by ESD. Texas Instruments recommends that all integrated circuits be handled with appropriate precautions. Failure to observe proper handling and installation procedures can cause damage.

ESD damage can range from subtle performance degradation to complete device failure. Precision integrated circuits may be more susceptible to damage because very small parametric changes could cause the device not to meet its published specifications.

### AVAILABLE OPTIONS

| T <sub>A</sub> | NUMBER OF CHANNELS | PACKAGED DEVICES <sup>(1)</sup> <sup>(2)</sup> |                 |                              |
|----------------|--------------------|------------------------------------------------|-----------------|------------------------------|
|                |                    | TSSOP                                          | PowerPAD HTSSOP | QFN                          |
| –40°C to 85°C  | Single             | TPS2231PW                                      | TPS2231PWP      | TPS2231RGP                   |
|                |                    |                                                |                 | TPS2231MRGP <sup>(3)</sup>   |
|                |                    |                                                |                 | TPS2231MRGP-1 <sup>(4)</sup> |
|                |                    |                                                |                 | TPS2231MRGP-2 <sup>(5)</sup> |
|                |                    |                                                |                 | TPS2231MRGP-3 <sup>(6)</sup> |
|                | Dual               |                                                | TPS2236DAP      |                              |

- (1) The package is available taped and reeled. Add an R suffix to device types (e.g., TPS2231PWPR).
- (2) For the most current package and ordering information, see the Package Option Addendum at the end of this document, or see the TI website at [www.ti.com](http://www.ti.com).
- (3) The TPS2231MRGP is identical to the TPS2231 with the exception of the PowerPAD dimensions. See the Thermal Pad Mechanical data portion of this data sheet for specific information. The thermal pad for the TPS2231MRGP and TPS2231MRGP-1 is 2,2 mm x 2,2 mm; the thermal pad for the TPS2231RGP is 2,7 mm x 2,7 mm.
- (4) The TPS2231MRGP-1 is identical to the TPS2231MRGP with the exception that the orientation of the part in the reel is rotated 180°. See the Package Materials Information portion of this data sheet for specific information.
- (5) The TPS2231MRGP-2 is identical to the TPS2231MRGP with the exception that the orientation of the part in the reel is rotated 90° and does not have an internal pull-up resistor between AUX IN and SYSRST. See the Package Materials Information portion of this data sheet for specific information.
- (6) The TPS2231MRGP-3 is identical to the TPS2231MRGP with the exception that the 1.5VIN and 3.3VIN UVLO circuits are independent.

### ABSOLUTE MAXIMUM RATINGS

over operating free-air temperature range (unless otherwise noted)<sup>(1)</sup>

|                                                              |                                              |                                     | TPS223x                                                                         | UNIT |    |
|--------------------------------------------------------------|----------------------------------------------|-------------------------------------|---------------------------------------------------------------------------------|------|----|
| V <sub>I</sub>                                               | Input voltage range for card power           | V <sub>I(3.3VIN)</sub>              | –0.3 to 6                                                                       | V    |    |
|                                                              |                                              | V <sub>I(1.5VIN)</sub>              | –0.3 to 6                                                                       | V    |    |
|                                                              |                                              | V <sub>I(AUXIN)</sub>               | –0.3 to 6                                                                       | V    |    |
| Logic input/output voltage                                   |                                              |                                     | –0.3 to 6                                                                       | V    |    |
| V <sub>O</sub>                                               | Output voltage range                         | V <sub>O(3.3VOUT)</sub>             | –0.3 to 6                                                                       | V    |    |
|                                                              |                                              | V <sub>O(1.5VOUT)</sub>             | –0.3 to 6                                                                       | V    |    |
|                                                              |                                              | V <sub>O(AUXOUT)</sub>              | –0.3 to 6                                                                       | V    |    |
| Continuous total power dissipation                           |                                              |                                     | See Dissipation Rating Table                                                    |      |    |
| I <sub>O</sub>                                               | Output current                               | I <sub>O(3.3VOUT)</sub>             | Internally limited                                                              |      |    |
|                                                              |                                              | I <sub>O(AUXOUT)</sub>              | Internally limited                                                              |      |    |
|                                                              |                                              | I <sub>O(1.5VOUT)</sub>             | Internally limited                                                              |      |    |
| $\overline{\text{OC}}$ sink current                          |                                              |                                     | 10                                                                              | mA   |    |
| $\overline{\text{PERST}}$ sink/source current                |                                              |                                     | 10                                                                              | mA   |    |
| T <sub>J</sub>                                               | Operating virtual junction temperature range |                                     | –40 to 120                                                                      | °C   |    |
| T <sub>stg</sub>                                             | Storage temperature range                    |                                     | –55 to 150                                                                      | °C   |    |
| Lead temperature 1,6 mm (1/16 inch) from case for 10 seconds |                                              |                                     | 260                                                                             | °C   |    |
| ESD                                                          | Electrostatic discharge protection           | Human body model (HBM) MIL-STD-883C | TPS2231                                                                         | 2    | kV |
|                                                              |                                              |                                     | TPS2236, all pins except $\overline{\text{PERSTx}}$ and $\overline{\text{OCx}}$ |      |    |
|                                                              |                                              |                                     | TPS2236, $\overline{\text{PERSTx}}$ and $\overline{\text{OCx}}$                 |      |    |
|                                                              |                                              | Charge device model (CDM)           | 500                                                                             | V    |    |

- (1) Stresses beyond those listed under *absolute maximum ratings* may cause permanent damage to the device. These are stress ratings only, and functional operation of the device at these or any other conditions beyond those indicated under *recommended operating conditions* is not implied. Exposure to absolute-maximum-rated conditions for extended periods may affect device reliability.

**DISSIPATION RATINGS (Thermal Resistance = °C/W)**

| PACKAGE                                               | T <sub>A</sub> ≤ 25°C<br>POWER RATING | DERATING FACTOR<br>ABOVE T <sub>A</sub> = 25°C | T <sub>A</sub> = 70°C<br>POWER RATING | T <sub>A</sub> = 85°C<br>POWER RATING |
|-------------------------------------------------------|---------------------------------------|------------------------------------------------|---------------------------------------|---------------------------------------|
| PW (20) <sup>(1)</sup>                                | 704.2 mW                              | 7.41 mW/°C                                     | 370.6 mW                              | 259.5 mW                              |
| PWP (24) <sup>(1)</sup>                               | 3153 mW                               | 33.19 mW/°C                                    | 1659.5 mW                             | 1161.6 mW                             |
| RGP (20) <sup>(2)</sup>                               | 3277.5 mW                             | 34.5 mW/°C                                     | 1725 mW                               | 1207.3 mW                             |
| DAP (32) <sup>(1)</sup><br>PowerPAD not soldered down | 993.4 mW                              | 10.46 mW/°C                                    | 522.8 mW                              | 366 mW                                |
| DAP (32) <sup>(1)</sup>                               | 4040.8 mW                             | 42.55 mW/°C                                    | 2126.8 mW                             | 1488.7 mW                             |

- (1) These devices are mounted on an JEDEC low-k board (2-oz. traces on surface), (The table is assuming that the maximum junction temperature is 120°C). The power pad on the device must be soldered down to the power pad on the board if best thermal performance is needed.
- (2) This device is mounted on a JEDEC JES051.5 high-k board (2 signal, 2 plane). The values assume a maximum junction temperature of 120°C.

**RECOMMENDED OPERATING CONDITIONS**

|                         |                                        |                                                      | MIN  | MAX  | UNIT |
|-------------------------|----------------------------------------|------------------------------------------------------|------|------|------|
| V <sub>I(3.3VIN)</sub>  | Input voltage                          | 3.3VIN is only required for its respective functions | 3    | 3.6  | V    |
| V <sub>I(1.5VIN)</sub>  |                                        | 1.5VIN is only required for its respective functions | 1.35 | 1.65 |      |
| V <sub>I(AUXIN)</sub>   |                                        | AUXIN is required for all circuit operations         | 3    | 3.6  |      |
| I <sub>O(3.3VOUT)</sub> | Continuous output current              | T <sub>J</sub> = 120°C                               | 0    | 1.3  | A    |
| I <sub>O(1.5VOUT)</sub> |                                        |                                                      | 0    | 650  | mA   |
| I <sub>O(AUXOUT)</sub>  |                                        |                                                      | 0    | 275  | mA   |
| T <sub>J</sub>          | Operating virtual junction temperature |                                                      | -40  | 120  | °C   |

**ELECTRICAL CHARACTERISTICS**

T<sub>J</sub> = 25°C, V<sub>I(3.3VIN)</sub> = V<sub>I(AUXIN)</sub> = 3.3 V, V<sub>I(1.5VIN)</sub> = 1.5 V, V<sub>I(/SHDNx)</sub>, V<sub>I(/STBYx)</sub> = 3.3 V, V<sub>I(/CPPEX)</sub> = V<sub>I(/CPUSBx)</sub> = 0 V, V<sub>I(/SYRST)</sub> = 3.3 V, OCx and RCLKENx and PERSTx are open, all voltage outputs unloaded (unless otherwise noted)

| PARAMETER                                     |                                                                                                            | TEST CONDITIONS                                               | MIN  | TYP | MAX | UNIT |
|-----------------------------------------------|------------------------------------------------------------------------------------------------------------|---------------------------------------------------------------|------|-----|-----|------|
| <b>POWER SWITCH</b>                           |                                                                                                            |                                                               |      |     |     |      |
| Power switch resistance                       | 3.3VIN to 3.3VOUT with two switches on for dual                                                            | T <sub>J</sub> = 25°C, I = 1300 mA each                       | 45   |     | 68  | mΩ   |
|                                               |                                                                                                            | T <sub>J</sub> = 100°C, I = 1300 mA each                      |      |     |     |      |
|                                               | 1.5VIN to 1.5VOUT With two switches on for dual                                                            | T <sub>J</sub> = 25°C, I = 650 mA each                        | 46   |     | 70  | mΩ   |
|                                               |                                                                                                            | T <sub>J</sub> = 100°C, I = 650 mA each                       |      |     |     |      |
| AUXIN to AUXOUT with two switches on for dual | T <sub>J</sub> = 25°C, I = 275 mA each                                                                     | 120                                                           |      | 200 | mΩ  |      |
|                                               | T <sub>J</sub> = 100°C, I = 275 mA each                                                                    |                                                               |      |     |     |      |
| R <sub>(DIS_FET)</sub>                        | Discharge resistance on 3.3V/1.5V/AUX outputs                                                              | V <sub>I(/SHDNx)</sub> = 0 V, I <sub>(discharge)</sub> = 1 mA | 100  |     | 500 | Ω    |
| I <sub>OS</sub>                               | Short-circuit output current <sup>(1)</sup>                                                                | I <sub>OS(3.3VOUT)</sub> (steady-state value)                 | 1.35 | 2   | 2.5 | A    |
|                                               |                                                                                                            | I <sub>OS(1.5VOUT)</sub> (steady-state value)                 | 0.67 | 1   | 1.3 | A    |
|                                               |                                                                                                            | I <sub>OS(AUXOUT)</sub> (steady-state value)                  | 275  | 450 | 600 | mA   |
| Thermal shutdown                              | Trip point, T <sub>J</sub>                                                                                 | Rising temperature, not in overcurrent condition              | 155  | 165 |     | °C   |
|                                               |                                                                                                            | Overcurrent condition                                         | 120  | 130 |     |      |
|                                               | Hysteresis                                                                                                 |                                                               | 10   |     |     |      |
| Current-limit response time                   | From short to the 1 <sup>st</sup> threshold within 1.1 times of final current limit, T <sub>J</sub> = 25°C | V <sub>O(3.3VOUT)</sub> with 100-mΩ short                     | 43   |     | 100 | μs   |
|                                               |                                                                                                            | V <sub>O(1.5VOUT)</sub> with 100-mΩ short, TPS2231            | 100  |     | 140 |      |
|                                               |                                                                                                            | V <sub>O(1.5VOUT)</sub> with 100-mΩ short, TPS2236            | 110  |     | 150 |      |
|                                               |                                                                                                            | V <sub>O(AUXOUT)</sub> with 100-mΩ short                      | 38   |     | 100 |      |

- (1) Pulse-testing techniques maintain junction temperature close to ambient temperature; thermal effects must be taken into account separately.

**ELECTRICAL CHARACTERISTICS (continued)**

$T_J = 25^\circ\text{C}$ ,  $V_{I(3.3\text{VIN})} = V_{I(\text{AUXIN})} = 3.3\text{ V}$ ,  $V_{I(1.5\text{VIN})} = 1.5\text{ V}$ ,  $V_{I(\text{SHDNx})}$ ,  $V_{I(\text{STBYx})} = 3.3\text{ V}$ ,  $V_{I(\text{CPPEx})} = V_{I(\text{CPUSBx})} = 0\text{ V}$ ,  $V_{I(\text{SYSRST})} = 3.3\text{ V}$ ,  $\text{OCx}$  and  $\text{RCLKENx}$  and  $\text{PERSTx}$  are open, all voltage outputs unloaded (unless otherwise noted)

| PARAMETER             |                                   | TEST CONDITIONS                               |                                                                                                                                                                                                                                                           | MIN                                                                                                                                                                                                                                                                                                | TYP                    | MAX           | UNIT          |    |
|-----------------------|-----------------------------------|-----------------------------------------------|-----------------------------------------------------------------------------------------------------------------------------------------------------------------------------------------------------------------------------------------------------------|----------------------------------------------------------------------------------------------------------------------------------------------------------------------------------------------------------------------------------------------------------------------------------------------------|------------------------|---------------|---------------|----|
| $I_i$                 | Operation input quiescent current | Normal operation of TPS2236                   | $I_{I(\text{AUXIN})}$                                                                                                                                                                                                                                     | Outputs are unloaded, $T_J[-40, 120^\circ\text{C}]$ (does not include $\overline{\text{CPPEx}}$ and $\overline{\text{CPUSBx}}$ logic pullup currents)                                                                                                                                              | 125                    | 200           | $\mu\text{A}$ |    |
|                       |                                   |                                               | $I_{I(3.3\text{VIN})}$                                                                                                                                                                                                                                    |                                                                                                                                                                                                                                                                                                    | 17.5                   | 25            |               |    |
|                       |                                   |                                               | $I_{I(1.5\text{VIN})}$                                                                                                                                                                                                                                    |                                                                                                                                                                                                                                                                                                    | 5.5                    | 15            |               |    |
|                       | Normal operation of TPS2231       | $I_{I(\text{AUXIN})}$                         | 85                                                                                                                                                                                                                                                        |                                                                                                                                                                                                                                                                                                    | 150                    | $\mu\text{A}$ |               |    |
|                       |                                   | $I_{I(3.3\text{VIN})}$                        | 10                                                                                                                                                                                                                                                        |                                                                                                                                                                                                                                                                                                    | 15                     |               |               |    |
|                       |                                   | $I_{I(1.5\text{VIN})}$                        | 2.5                                                                                                                                                                                                                                                       |                                                                                                                                                                                                                                                                                                    | 10                     |               |               |    |
| $I_i$                 | Total input quiescent current     | Normal operation of TPS2236                   | $I_{I(\text{AUXIN})}$                                                                                                                                                                                                                                     | Outputs are unloaded, $T_J[-40, 120^\circ\text{C}]$ (include $\overline{\text{CPPEx}}$ and $\overline{\text{CPUSBx}}$ logic pullup currents)                                                                                                                                                       | 200                    | 320           | $\mu\text{A}$ |    |
|                       |                                   |                                               | $I_{I(3.3\text{VIN})}$                                                                                                                                                                                                                                    |                                                                                                                                                                                                                                                                                                    | 17.5                   | 25            |               |    |
|                       |                                   |                                               | $I_{I(1.5\text{VIN})}$                                                                                                                                                                                                                                    |                                                                                                                                                                                                                                                                                                    | 5.5                    | 15            |               |    |
|                       |                                   | Normal operation of TPS2231                   | $I_{I(\text{AUXIN})}$                                                                                                                                                                                                                                     |                                                                                                                                                                                                                                                                                                    | 120                    | 210           | $\mu\text{A}$ |    |
|                       |                                   |                                               | $I_{I(3.3\text{VIN})}$                                                                                                                                                                                                                                    |                                                                                                                                                                                                                                                                                                    | 10                     | 15            |               |    |
|                       |                                   |                                               | $I_{I(1.5\text{VIN})}$                                                                                                                                                                                                                                    |                                                                                                                                                                                                                                                                                                    | 2.5                    | 10            |               |    |
|                       | Shutdown mode of TPS2236          | $I_{I(\text{AUXIN})}$                         | $I_{I(3.3\text{VIN})}$                                                                                                                                                                                                                                    | $\overline{\text{CPUSB}} = \overline{\text{CPPE}} = 0\text{ V}$ , $\overline{\text{SHDN}} = 0\text{ V}$ (discharge FETs are on) (include $\overline{\text{CPPEx}}$ and $\overline{\text{CPUSBx}}$ logic pullup currents and $\overline{\text{SHDN}}$ pullup current) $T_J[-40, 120^\circ\text{C}]$ | 250                    | 440           | $\mu\text{A}$ |    |
|                       |                                   |                                               |                                                                                                                                                                                                                                                           |                                                                                                                                                                                                                                                                                                    | $I_{I(1.5\text{VIN})}$ | 3.5           |               | 20 |
|                       |                                   |                                               |                                                                                                                                                                                                                                                           |                                                                                                                                                                                                                                                                                                    | $I_{I(1.5\text{VIN})}$ | 0.1           |               | 20 |
|                       |                                   | Shutdown mode of TPS2231                      | $I_{I(\text{AUXIN})}$                                                                                                                                                                                                                                     |                                                                                                                                                                                                                                                                                                    | 144                    | 270           | $\mu\text{A}$ |    |
|                       |                                   |                                               | $I_{I(3.3\text{VIN})}$                                                                                                                                                                                                                                    |                                                                                                                                                                                                                                                                                                    | 3.5                    | 10            |               |    |
|                       |                                   |                                               | $I_{I(1.5\text{VIN})}$                                                                                                                                                                                                                                    |                                                                                                                                                                                                                                                                                                    | 0.5                    | 10            |               |    |
| $I_{\text{ikg(FWD)}}$ | TPS2236                           | Forward leakage current                       | $\overline{\text{SHDN}} = 3.3\text{ V}$ , $\overline{\text{CPUSB}} = \overline{\text{CPPE}} = 3.3\text{ V}$ (no card present, discharge FETs are on); current measured at input pins, $T_J = 120^\circ\text{C}$ , includes $\text{RCLKEN}$ pullup current | 40                                                                                                                                                                                                                                                                                                 | 100                    | $\mu\text{A}$ |               |    |
|                       |                                   |                                               |                                                                                                                                                                                                                                                           | $I_{I(3.3\text{VIN})}$                                                                                                                                                                                                                                                                             | 0.1                    |               | 100           |    |
|                       |                                   |                                               |                                                                                                                                                                                                                                                           | $I_{I(1.5\text{VIN})}$                                                                                                                                                                                                                                                                             | 0.1                    |               | 100           |    |
|                       | TPS2231                           | $I_{I(\text{AUXIN})}$                         |                                                                                                                                                                                                                                                           | 20                                                                                                                                                                                                                                                                                                 | 50                     | $\mu\text{A}$ |               |    |
|                       |                                   | $I_{I(3.3\text{VIN})}$                        |                                                                                                                                                                                                                                                           | 0.1                                                                                                                                                                                                                                                                                                | 50                     |               |               |    |
|                       |                                   | $I_{I(1.5\text{VIN})}$                        |                                                                                                                                                                                                                                                           | 0.1                                                                                                                                                                                                                                                                                                | 50                     |               |               |    |
| $I_{\text{ikg(RVS)}}$ | $I_{I(\text{AUXOUT})}$            | Reverse leakage current (TPS2236 and TPS2231) | $V_{O(\text{AUXOUT})} = V_{O(3.3\text{VOUT})} = 3.3\text{ V}$ ;<br>$V_{O(1.5\text{VOUT})} = 1.5\text{ V}$ ; All voltage inputs are grounded (current measured from output pins going in)                                                                  | $T_J = 25^\circ\text{C}$                                                                                                                                                                                                                                                                           | 0.1                    | 10            | $\mu\text{A}$ |    |
|                       |                                   |                                               |                                                                                                                                                                                                                                                           | $T_J = 120^\circ\text{C}$                                                                                                                                                                                                                                                                          | 50                     |               |               |    |
|                       | $I_{I(3.3\text{VOUT})}$           | $T_J = 25^\circ\text{C}$                      |                                                                                                                                                                                                                                                           | 0.1                                                                                                                                                                                                                                                                                                | 10                     | $\mu\text{A}$ |               |    |
|                       |                                   | $T_J = 120^\circ\text{C}$                     |                                                                                                                                                                                                                                                           | 50                                                                                                                                                                                                                                                                                                 |                        |               |               |    |
|                       | $I_{I(1.5\text{VOUT})}$           | $T_J = 25^\circ\text{C}$                      |                                                                                                                                                                                                                                                           | 0.1                                                                                                                                                                                                                                                                                                | 10                     | $\mu\text{A}$ |               |    |
|                       |                                   | $T_J = 120^\circ\text{C}$                     |                                                                                                                                                                                                                                                           | 50                                                                                                                                                                                                                                                                                                 |                        |               |               |    |

**LOGIC SECTION ( $\overline{\text{SYSRST}}$ ,  $\overline{\text{SHDNx}}$ ,  $\overline{\text{STBYx}}$ ,  $\overline{\text{PERSTx}}$ ,  $\text{RCLKENx}$ ,  $\text{OCx}$ ,  $\overline{\text{CPUSBx}}$ ,  $\overline{\text{CPPEx}}$ )**

|                                                                                                                                                         |                                                                       |        |                                                                                 |           |      |               |
|---------------------------------------------------------------------------------------------------------------------------------------------------------|-----------------------------------------------------------------------|--------|---------------------------------------------------------------------------------|-----------|------|---------------|
| Logic input supply current                                                                                                                              | $I_{I(\overline{\text{SYSRST}})}$                                     | Input  | $\overline{\text{SYSRST}} = 3.6\text{ V}$ , sinking                             | 0         | 1    | $\mu\text{A}$ |
|                                                                                                                                                         |                                                                       |        | $\overline{\text{SYSRST}} = 0\text{ V}$ , sourcing                              | TPS2231-2 | 0    |               |
|                                                                                                                                                         |                                                                       |        |                                                                                 | 10        | 30   |               |
|                                                                                                                                                         | $I_{I(\overline{\text{SHDNx}})}$                                      | Input  | $\overline{\text{SHDNx}} = 3.6\text{ V}$ , sinking                              | 0         | 1    | $\mu\text{A}$ |
|                                                                                                                                                         |                                                                       |        | $\overline{\text{SHDNx}} = 0\text{ V}$ , sourcing                               | 10        | 30   |               |
|                                                                                                                                                         | $I_{I(\overline{\text{STBYx}})}$                                      | Input  | $\overline{\text{STBYx}} = 3.6\text{ V}$ , sinking                              | 0         | 1    | $\mu\text{A}$ |
|                                                                                                                                                         |                                                                       |        | $\overline{\text{STBYx}} = 0\text{ V}$ , sourcing                               | 10        | 30   |               |
|                                                                                                                                                         | $I_{I(\text{RCLKENx})}$                                               | Input  | $\text{RCLKENx} = 0\text{ V}$ , sourcing                                        | 10        | 30   | $\mu\text{A}$ |
|                                                                                                                                                         | $I_{I(\overline{\text{CPUSBx}})}$ or $I_{I(\overline{\text{CPPEx}})}$ | Inputs | $\overline{\text{CPUSB}}$ or $\overline{\text{CPPE}} = 0\text{ V}$ , sinking    | 0         | 1    | $\mu\text{A}$ |
|                                                                                                                                                         |                                                                       |        | $\overline{\text{CPUSB}}$ or $\overline{\text{CPPE}} = 3.6\text{ V}$ , sourcing | 10        | 30   |               |
| Logic input voltage                                                                                                                                     | High level                                                            |        |                                                                                 | 2         |      | V             |
|                                                                                                                                                         | Low level                                                             |        |                                                                                 |           | 0.8  |               |
| RCLEN output low voltage                                                                                                                                |                                                                       | Output | $I_{O(\text{RCLKEN})} = 60\text{ }\mu\text{A}$                                  |           | 0.4  | V             |
| $\overline{\text{PERST}}$ assertion threshold of output voltage ( $\overline{\text{PERST}}$ asserted when any output voltage falls below the threshold) |                                                                       |        | 3.3VOUT falling                                                                 | 2.7       | 3    | V             |
|                                                                                                                                                         |                                                                       |        | AUXOUT falling                                                                  | 2.7       | 3    |               |
|                                                                                                                                                         |                                                                       |        | 1.5VOUT falling                                                                 | 1.2       | 1.35 |               |
| $\overline{\text{PERST}}$ assertion delay from output voltage                                                                                           |                                                                       |        | 3.3VOUT, AUXOUT, or 1.5VOUT falling                                             |           | 500  | ns            |

**ELECTRICAL CHARACTERISTICS (continued)**

$T_J = 25^\circ\text{C}$ ,  $V_{I(3.3\text{VIN})} = V_{I(\text{AUXIN})} = 3.3\text{ V}$ ,  $V_{I(1.5\text{VIN})} = 1.5\text{ V}$ ,  $V_{I(\text{SHDNx})}$ ,  $V_{I(\text{STBYx})} = 3.3\text{ V}$ ,  $V_{I(\text{CPPEx})} = V_{I(\text{CPUSBx})} = 0\text{ V}$ ,  
 $V_{I(\text{SYSRST})} = 3.3\text{ V}$ ,  $\text{OCx}$  and  $\text{RCLKENx}$  and  $\text{PERSTx}$  are open, all voltage outputs unloaded (unless otherwise noted)

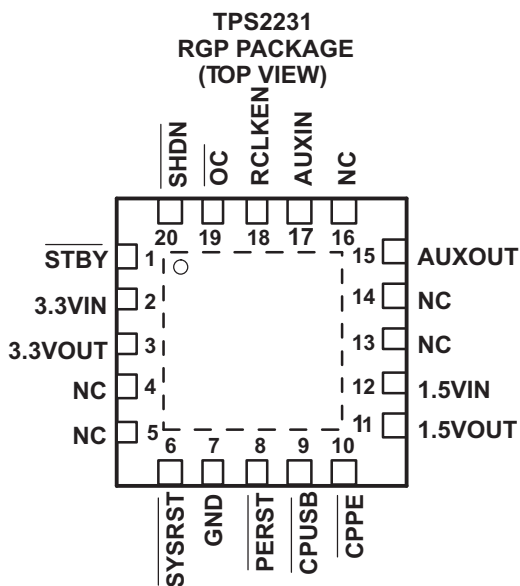
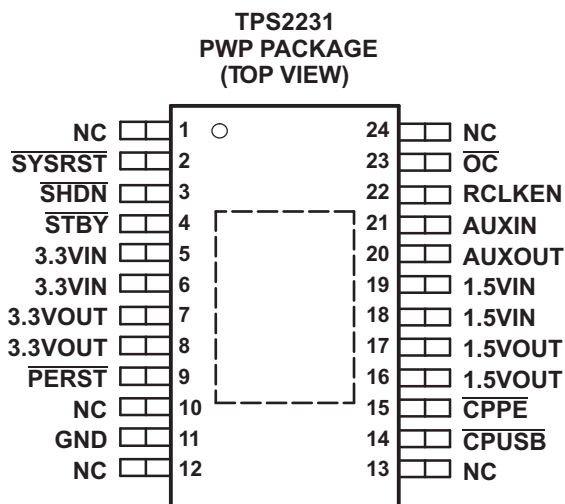
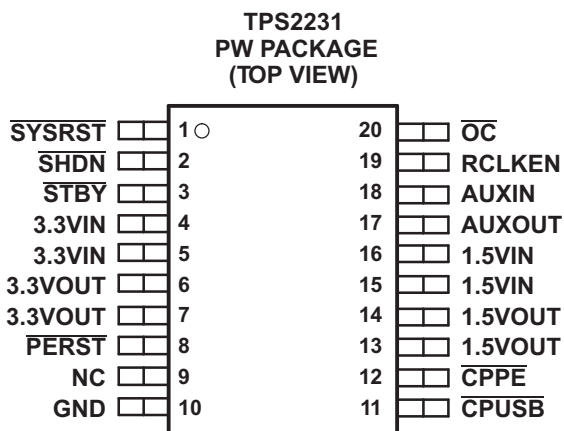
| PARAMETER                                                                 | TEST CONDITIONS                                                                                 | MIN | TYP | MAX  | UNIT          |
|---------------------------------------------------------------------------|-------------------------------------------------------------------------------------------------|-----|-----|------|---------------|
| $\overline{\text{PERST}}$ de-assertion delay from output voltage          | 3.3VOUT, AUXOUT, and 1.5VOUT rising within tolerance                                            | 4   | 10  | 20   | ms            |
| $\overline{\text{PERST}}$ assertion delay from $\overline{\text{SYSRST}}$ | Max time from $\overline{\text{SYSRST}}$ asserted or de-asserted                                |     |     | 500  | ns            |
| $t_{W(\text{PERST})}$ $\overline{\text{PERST}}$ minimum pulse width       | 3.3VOUT, AUXOUT, or 1.5VOUT falling out of tolerance or triggered by $\overline{\text{SYSRST}}$ | 100 | 250 |      | $\mu\text{s}$ |
| $\overline{\text{PERST}}$ output low voltage                              | $I_{O(\text{PERST})} = 500\ \mu\text{A}$                                                        |     |     | 0.4  | V             |
| $\overline{\text{PERST}}$ output high voltage                             |                                                                                                 | 2.4 |     |      | V             |
| $\overline{\text{OC}}$ output low voltage                                 | $I_{O(\text{OC})} = 2\text{ mA}$                                                                |     |     | 0.4  | V             |
| $\overline{\text{OC}}$ leakage current                                    | $V_{O(\text{OC})} = 3.6\text{ V}$                                                               |     |     | 1    | $\mu\text{A}$ |
| $\overline{\text{OC}}$ deglitch                                           | Falling into or out of an overcurrent condition                                                 | 6   |     | 20   | mS            |
| <b>UNDERVOLTAGE LOCKOUT (UVLO)</b>                                        |                                                                                                 |     |     |      |               |
| 3.3VIN UVLO                                                               | 3.3VIN level, below which 3.3VIN and 1.5VIN switches are off                                    | 2.6 |     | 2.9  | V             |
|                                                                           | 3.3VIN level, below which 3.3VIN switch is off (TPS2231-3 only)                                 |     |     |      |               |
| 1.5VIN UVLO                                                               | 1.5VIN level, below which 3.3VIN and 1.5VIN switches are off                                    | 1   |     | 1.25 |               |
|                                                                           | 1.5VIN level, below which 1.5VIN switch is off (TPS2231-3 only)                                 |     |     |      |               |
| AUXIN UVLO                                                                | AUXIN level, below which all switches are off                                                   | 2.6 |     | 2.9  |               |
| UVLO hysteresis                                                           |                                                                                                 |     | 100 |      |               |

### SWITCHING CHARACTERISTICS

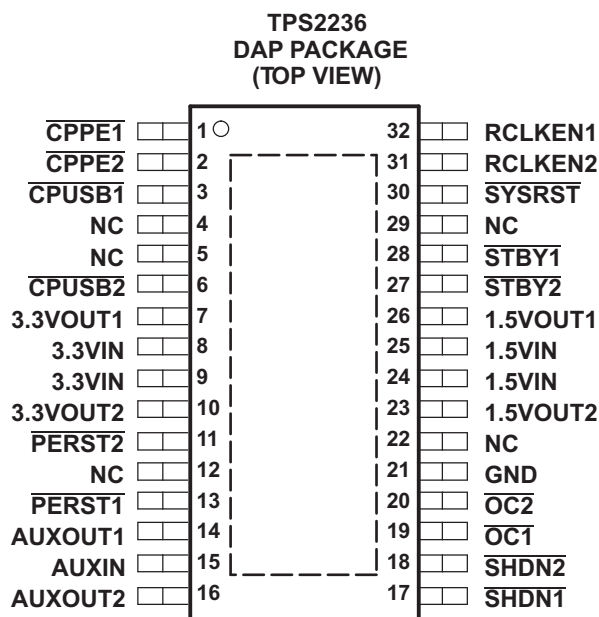
$T_J = 25^\circ\text{C}$ ,  $V_{I(3.3\text{VIN})} = V_{I(\text{AUXIN})} = 3.3\text{ V}$ ,  $V_{I(1.5\text{VIN})} = 1.5\text{ V}$ ,  $V_{I(\text{SHDNx})}$ ,  $V_{I(\text{STBYx})} = 3.3\text{ V}$ ,  $V_{I(\text{CPPEx})} = V_{I(\text{CPUSBx})} = 0\text{ V}$ ,  $V_{I(\text{SYSRST})} = 3.3\text{ V}$ , OCx and RCLKENx and PERSTx are open, all voltage outputs unloaded (unless otherwise noted)

| PARAMETER            |                                                                       | TEST CONDITIONS   | MIN                                                                                      | TYP  | MAX | UNIT |               |
|----------------------|-----------------------------------------------------------------------|-------------------|------------------------------------------------------------------------------------------|------|-----|------|---------------|
| $t_r$                | Output rise times                                                     | 3.3VIN to 3.3VOUT | $C_{L(3.3\text{VOUT})} = 0.1\ \mu\text{F}$ , $I_{O(3.3\text{VOUT})} = 0\text{ A}$        | 0.1  |     | 3    | ms            |
|                      |                                                                       | AUXIN to AUXOUT   | $C_{L(\text{AUXOUT})} = 0.1\ \mu\text{F}$ , $I_{O(\text{AUXOUT})} = 0\text{ A}$          | 0.1  |     | 3    |               |
|                      |                                                                       | 1.5VIN to 1.5VOUT | $C_{L(1.5\text{VOUT})} = 0.1\ \mu\text{F}$ , $I_{O(1.5\text{VOUT})} = 0\text{ A}$        | 0.1  |     | 3    |               |
|                      |                                                                       | 3.3VIN to 3.3VOUT | $C_{L(3.3\text{VOUT})} = 100\ \mu\text{F}$ , $R_L = V_{I(3.3\text{VIN})}/1\text{ A}$     | 0.1  |     | 6    |               |
|                      |                                                                       | AUXIN to AUXOUT   | $C_{L(\text{AUXOUT})} = 100\ \mu\text{F}$ , $R_L = V_{I(\text{AUXIN})}/0.250\text{ A}$   | 0.1  |     | 6    |               |
|                      |                                                                       | 1.5VIN to 1.5VOUT | $C_{L(1.5\text{VOUT})} = 100\ \mu\text{F}$ , $R_L = V_{I(1.5\text{VIN})}/0.500\text{ A}$ | 0.1  |     | 6    |               |
| $t_f$                | Output fall times when card removed (both CPUSB and CPPE de-asserted) | 3.3VIN to 3.3VOUT | $C_{L(3.3\text{VOUT})} = 0.1\ \mu\text{F}$ , $I_{O(3.3\text{VOUT})} = 0\text{ A}$        | 10   |     | 150  | $\mu\text{s}$ |
|                      |                                                                       | AUXIN to VAUXOUT  | $C_{L(\text{AUXOUT})} = 0.1\ \mu\text{F}$ , $I_{O(\text{AUXOUT})} = 0\text{ A}$          | 10   |     | 150  |               |
|                      |                                                                       | 1.5VIN to 1.5VOUT | $C_{L(1.5\text{VOUT})} = 0.1\ \mu\text{F}$ , $I_{O(1.5\text{VOUT})} = 0\text{ A}$        | 10   |     | 150  |               |
|                      |                                                                       | 3.3VIN to 3.3VOUT | $C_{L(3.3\text{VOUT})} = 20\ \mu\text{F}$ , $I_{O(3.3\text{VOUT})} = 0\text{ A}$         | 2    |     | 30   | ms            |
|                      |                                                                       | AUXIN to VAUXOUT  | $C_{L(\text{AUXOUT})} = 20\ \mu\text{F}$ , $I_{O(\text{AUXOUT})} = 0\text{ A}$           | 2    |     | 30   |               |
|                      |                                                                       | 1.5VIN to 1.5VOUT | $C_{L(1.5\text{VOUT})} = 20\ \mu\text{F}$ , $I_{O(1.5\text{VOUT})} = 0\text{ A}$         | 2    |     | 30   |               |
| $t_f$                | Output fall times when SHDN asserted (card is present)                | 3.3VIN to 3.3VOUT | $C_{L(3.3\text{VOUT})} = 0.1\ \mu\text{F}$ , $I_{O(3.3\text{VOUT})} = 0\text{ A}$        | 10   |     | 150  | $\mu\text{s}$ |
|                      |                                                                       | AUXIN to VAUXOUT  | $C_{L(\text{AUXOUT})} = 0.1\ \mu\text{F}$ , $I_{O(\text{AUXOUT})} = 0\text{ A}$          | 10   |     | 150  |               |
|                      |                                                                       | 1.5VIN to 1.5VOUT | $C_{L(1.5\text{VOUT})} = 0.1\ \mu\text{F}$ , $I_{O(1.5\text{VOUT})} = 0\text{ A}$        | 10   |     | 150  |               |
|                      |                                                                       | 3.3VIN to 3.3VOUT | $C_{L(3.3\text{VOUT})} = 100\ \mu\text{F}$ , $R_L = V_{I(3.3\text{VIN})}/1\text{ A}$     | 0.1  |     | 5    | ms            |
|                      |                                                                       | AUXIN to VAUXOUT  | $C_{L(\text{AUXOUT})} = 100\ \mu\text{F}$ , $R_L = V_{I(\text{AUXIN})}/0.250\text{ A}$   | 0.1  |     | 5    |               |
|                      |                                                                       | 1.5VIN to 1.5VOUT | $C_{L(1.5\text{VOUT})} = 100\ \mu\text{F}$ , $R_L = V_{I(1.5\text{VIN})}/0.500\text{ A}$ | 0.1  |     | 5    |               |
| $t_{pd(\text{on})}$  | Turn-on propagation delay                                             | 3.3VIN to 3.3VOUT | $C_{L(3.3\text{VOUT})} = 0.1\ \mu\text{F}$ , $I_{O(3.3\text{VOUT})} = 0\text{ A}$        | 0.1  |     | 1    | ms            |
|                      |                                                                       | AUXIN to VAUXOUT  | $C_{L(\text{AUXOUT})} = 0.1\ \mu\text{F}$ , $I_{O(\text{AUXOUT})} = 0\text{ A}$          | 0.05 |     | 0.5  |               |
|                      |                                                                       | 1.5VIN to 1.5VOUT | $C_{L(1.5\text{VOUT})} = 0.1\ \mu\text{F}$ , $I_{O(1.5\text{VOUT})} = 0\text{ A}$        | 0.1  |     | 1    |               |
|                      |                                                                       | 3.3VIN to 3.3VOUT | $C_{L(3.3\text{VOUT})} = 100\ \mu\text{F}$ , $R_L = V_{I(3.3\text{VIN})}/1\text{ A}$     | 0.1  |     | 1.5  |               |
|                      |                                                                       | AUXIN to VAUXOUT  | $C_{L(\text{AUXOUT})} = 100\ \mu\text{F}$ , $R_L = V_{I(\text{AUXIN})}/0.250\text{ A}$   | 0.05 |     | 1    |               |
|                      |                                                                       | 1.5VIN to 1.5VOUT | $C_{L(1.5\text{VOUT})} = 100\ \mu\text{F}$ , $R_L = V_{I(1.5\text{VIN})}/0.500\text{ A}$ | 0.1  |     | 1.5  |               |
| $t_{pd(\text{off})}$ | Turn-off propagation delay                                            | 3.3VIN to 3.3VOUT | $C_{L(3.3\text{VOUT})} = 0.1\ \mu\text{F}$ , $I_{O(3.3\text{VOUT})} = 0\text{ A}$        | 0.1  |     | 1.5  | ms            |
|                      |                                                                       | AUXIN to VAUXOUT  | $C_{L(\text{AUXOUT})} = 0.1\ \mu\text{F}$ , $I_{O(\text{AUXOUT})} = 0\text{ A}$          | 0.05 |     | 0.5  |               |
|                      |                                                                       | 1.5VIN to 1.5VOUT | $C_{L(1.5\text{VOUT})} = 0.1\ \mu\text{F}$ , $I_{O(1.5\text{VOUT})} = 0\text{ A}$        | 0.1  |     | 1.5  |               |
|                      |                                                                       | 3.3VIN to 3.3VOUT | $C_{L(3.3\text{VOUT})} = 100\ \mu\text{F}$ , $R_L = V_{I(3.3\text{VIN})}/1\text{ A}$     | 0.1  |     | 1.5  |               |
|                      |                                                                       | AUXIN to VAUXOUT  | $C_{L(\text{AUXOUT})} = 100\ \mu\text{F}$ , $R_L = V_{I(\text{AUXIN})}/0.250\text{ A}$   | 0.05 |     | 0.5  |               |
|                      |                                                                       | 1.5VIN to 1.5VOUT | $C_{L(1.5\text{VOUT})} = 100\ \mu\text{F}$ , $R_L = V_{I(1.5\text{VIN})}/0.500\text{ A}$ | 0.1  |     | 1    |               |

**PIN ASSIGNMENTS**



NC - No internal connection



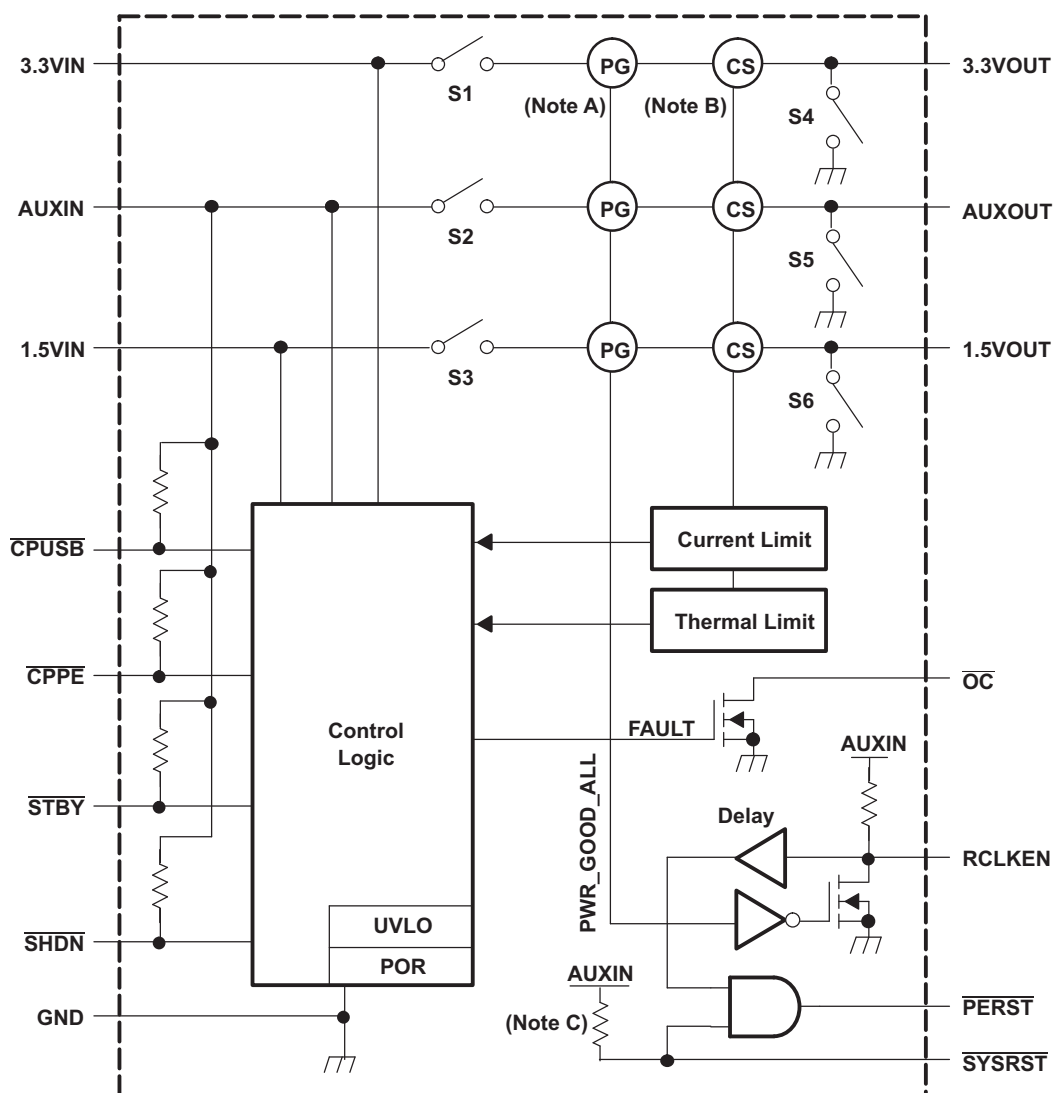
**TERMINAL FUNCTIONS**

| TERMINAL                   |        |                         |                        |                            |                        | I/O | DESCRIPTION                                                                                                                                                                                                                                                  |
|----------------------------|--------|-------------------------|------------------------|----------------------------|------------------------|-----|--------------------------------------------------------------------------------------------------------------------------------------------------------------------------------------------------------------------------------------------------------------|
| TPS2231                    |        |                         |                        | TPS2236                    |                        |     |                                                                                                                                                                                                                                                              |
| NAME                       | NO.    |                         |                        | NAME                       | NO.                    |     |                                                                                                                                                                                                                                                              |
|                            | PW     | PWP                     | RGP                    |                            | DAP                    |     |                                                                                                                                                                                                                                                              |
| 3.3VIN                     | 4, 5   | 5, 6                    | 2                      | 3.3VIN                     | 8, 9                   | I   | 3.3-V input for 3.3VOUT                                                                                                                                                                                                                                      |
| 1.5VIN                     | 15, 16 | 18, 19                  | 12                     | 1.5VIN                     | 24, 25                 | I   | 1.5-V input for 1.5VOUT                                                                                                                                                                                                                                      |
| AUXIN                      | 18     | 21                      | 17                     | AUXIN                      | 15                     | I   | AUX input for AUXOUT and chip power                                                                                                                                                                                                                          |
| GND                        | 10     | 11                      | 7                      | GND                        | 21                     |     | Ground                                                                                                                                                                                                                                                       |
| 3.3VOUT                    | 6, 7   | 7, 8                    | 3                      | 3.3VOUT1                   | 7                      | O   | Switched output that delivers 0 V, 3.3 V or high impedance to card                                                                                                                                                                                           |
| 1.5VOUT                    | 13, 14 | 16, 17                  | 11                     | 1.5VOUT1                   | 26                     | O   | Switched output that delivers 0 V, 1.5 V or high impedance to card                                                                                                                                                                                           |
| AUXOUT                     | 17     | 20                      | 15                     | AUXOUT1                    | 14                     | O   | Switched output that delivers 0 V, AUX or high impedance to card                                                                                                                                                                                             |
|                            |        |                         |                        | 3.3VOUT2                   | 10                     | O   | Switched output that delivers 0 V, 3.3 V or high impedance to card                                                                                                                                                                                           |
|                            |        |                         |                        | 1.5VOUT2                   | 23                     | O   | Switched output that delivers 0 V, 1.5 V or high impedance to card                                                                                                                                                                                           |
|                            |        |                         |                        | AUXOUT2                    | 16                     | O   | Switched output that delivers 0 V, AUX or high impedance to card                                                                                                                                                                                             |
| $\overline{\text{SYSRST}}$ | 1      | 2                       | 6                      | $\overline{\text{SYSRST}}$ | 30                     | I   | System Reset input – active low, logic level signal. Internally pulled up to AUXIN.                                                                                                                                                                          |
| $\overline{\text{CPPE}}$   | 12     | 15                      | 10                     | $\overline{\text{CPPE1}}$  | 1                      | I   | Card Present input for PCI Express cards. Internally pulled up to AUXIN                                                                                                                                                                                      |
| $\overline{\text{CPUSB}}$  | 11     | 14                      | 9                      | $\overline{\text{CPUSB1}}$ | 3                      | I   | Card Present input for USB cards. Internally pulled up to AUXIN.                                                                                                                                                                                             |
|                            |        |                         |                        | $\overline{\text{CPPE2}}$  | 2                      | I   | Card Present input for PCI Express cards. Internally pulled up to AUXIN.                                                                                                                                                                                     |
|                            |        |                         |                        | $\overline{\text{CPUSB2}}$ | 6                      | I   | Card Present input for USB cards. Internally pulled up to AUXIN.                                                                                                                                                                                             |
| $\overline{\text{PERST}}$  | 8      | 9                       | 8                      | $\overline{\text{PERST1}}$ | 13                     | O   | A logic level power good to slot 0 (with delay)                                                                                                                                                                                                              |
|                            |        |                         |                        | $\overline{\text{PERST2}}$ | 11                     | O   | A logic level power good to slot 1 (with delay)                                                                                                                                                                                                              |
| $\overline{\text{SHDN}}$   | 2      | 3                       | 20                     | $\overline{\text{SHDN1}}$  | 17                     | I   | Shutdown input – active low, logic level signal. Internally pulled up to AUXIN.                                                                                                                                                                              |
|                            |        |                         |                        | $\overline{\text{SHDN2}}$  | 18                     | I   | Shutdown input – active low, logic level signal. Internally pulled up to AUXIN.                                                                                                                                                                              |
| $\overline{\text{STBY}}$   | 3      | 4                       | 1                      | $\overline{\text{STBY1}}$  | 28                     | I   | Standby input – active low, logic level signal. Internally pulled up to AUXIN.                                                                                                                                                                               |
|                            |        |                         |                        | $\overline{\text{STBY2}}$  | 27                     | I   | Standby input – active low, logic level signal. Internally pulled up to AUXIN.                                                                                                                                                                               |
| RCLKEN                     | 19     | 22                      | 18                     | RCLKEN1                    | 32                     | I/O | Reference Clock Enable signal. As an output, a logic level power good to host for slot 0 (no delay – open drain). As an input, if kept inactive (low) by the host, prevents $\overline{\text{PERST}}$ from being de-asserted. Internally pulled up to AUXIN. |
|                            |        |                         |                        | RCLKEN2                    | 31                     | I/O | Reference Clock Enable signal. As an output, a logic level power good to host for slot 1 (no delay – open drain). As an input, if kept inactive (low) by the host, prevents $\overline{\text{PERST}}$ from being de-asserted. Internally pulled up to AUXIN. |
| $\overline{\text{OC}}$     | 20     | 23                      | 19                     | $\overline{\text{OC1}}$    | 19                     | O   | Overcurrent status output for slot 0 (open drain)                                                                                                                                                                                                            |
|                            |        |                         |                        | $\overline{\text{OC2}}$    | 20                     | O   | Overcurrent status output for slot 1 (open drain)                                                                                                                                                                                                            |
| NC                         | 9      | 1, 10,<br>12, 13,<br>24 | 4, 5,<br>13, 14,<br>16 | NC                         | 4, 5,<br>12, 22,<br>29 |     | No connection                                                                                                                                                                                                                                                |



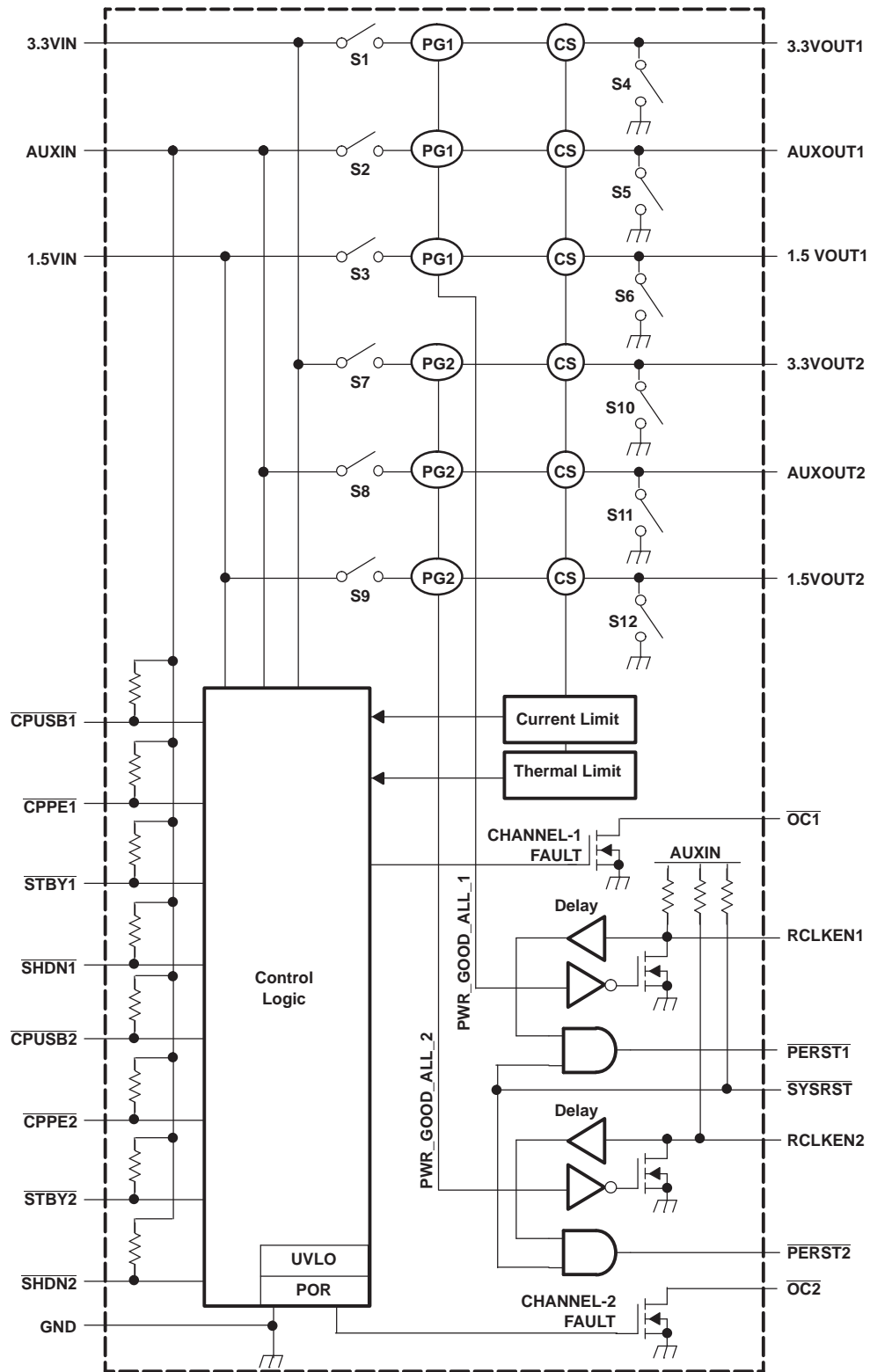
## FUNCTIONAL BLOCK DIAGRAM

### Single ExpressCard Power Switch



Note A: PG = power good  
 Note B: CS = current sense  
 Note C: TPS2231MRGP-2 does not have a pull-up resistor.

### Dual ExpressCard Power Switch



## DETAILED PIN DESCRIPTIONS

### **CPPE**

A logic low level on this input indicates that the card present supports PCI Express functions.  $\overline{\text{CPPE}}$  connects to the AUXIN input through an internal pullup. When a card is inserted,  $\overline{\text{CPPE}}$  is physically connected to ground if the card supports PCI Express functions.

### **CPUSB**

A logic low level on this input indicates that the card present supports USB functions.  $\overline{\text{CPUSB}}$  connects to the AUXIN input through an internal pullup. When a card is inserted,  $\overline{\text{CPUSB}}$  is physically connected to ground if the card supports USB functions.

### **SHDN**

When asserted (logic low), this input instructs the power switch to turn off all voltage outputs and the discharge FETs are activated. SHDN has an internal pullup connected to AUXIN.

### **STBY**

When asserted (logic low) after the card is inserted, this input places the power switch in standby mode by turning off the 3.3-V and 1.5-V power switches and keeping the AUX switch on. If asserted prior to the card being present,  $\overline{\text{STBY}}$  places the power switch in OFF Mode by turning off the AUX, 3.3-V, and 1.5-V power switches.  $\overline{\text{STBY}}$  has an internal pullup connected to AUXIN.

### **RCLKEN**

This pin serves as both an input and an output. On power up, a discharge FET keeps this signal at a low state as long as any of the output power rails are out of their tolerance range. Once all output power rails are within tolerance, the switch releases RCLKEN allowing it to transition to a high state (internally pulled up to AUXIN). The transition of RCLKEN from a low to a high state starts an internal timer for the purpose of deasserting  $\overline{\text{PERST}}$ . As an input, RCLKEN can be kept low to delay the start of the  $\overline{\text{PERST}}$  internal timer.

Because RCLKEN is internally connected to a discharge FET, this pin can only be driven low and should never be driven high as a logic input. When an external circuit drives this pin low, RCLKEN becomes an input; otherwise, this pin is an output.

RCLKEN can be used by the host system to enable a clock driver.

### **PERST**

On power up, this output remains asserted (logic level low) until all power rails are within tolerance. Once all power rails are within tolerance and RCLKEN has been released (logic high),  $\overline{\text{PERST}}$  is deasserted (logic high) after a time delay as shown in the parametric table. On power down, this output is asserted whenever any of the power rails drop below their voltage tolerance.

The  $\overline{\text{PERST}}$  signal is an output from the host system and an input to the ExpressCard module. This signal is only used by PCI Express-based modules and its function is to place the ExpressCard module in a reset state.

During power up, power down, or whenever power to the ExpressCard module is not stable or not within voltage tolerance limits, the ExpressCard standard requires that  $\overline{\text{PERST}}$  be asserted. As a result, this signal also serves as a power-good indicator to the ExpressCard module, and the relationship between the power rails and  $\overline{\text{PERST}}$  are explicitly defined in the ExpressCard standard.

The host can also place the ExpressCard module in a reset state by asserting a system reset  $\overline{\text{SYSRST}}$ . This system reset generates a  $\overline{\text{PERST}}$  to the ExpressCard module without disrupting the voltage rails. This is what is normally called a *warm* reset. However, in a *cold* start situation, the system reset can also be used to extend the length of time that  $\overline{\text{PERST}}$  is asserted.

## SYSRST

This input is driven by the host system and directly affects  $\overline{\text{PERST}}$ . Asserting  $\overline{\text{SYSRST}}$  (logic low) forces  $\overline{\text{PERST}}$  to assert. RCLKEN is not affected by the assertion of  $\overline{\text{SYSRST}}$ .  $\overline{\text{SYSRST}}$  has an internal pullup connected to AUXIN.

## OC

This pin is an open-drain output. When any of the three power switches (AUX, 3.3V, and 1.5V) is in an overcurrent condition,  $\overline{\text{OC}}$  is asserted (logic low) by an internal discharge FET with a deglitch delay. Otherwise, the discharge FET is open, and the pin can be pulled up to a power supply through an external resistor.

## FUNCTIONAL TRUTH TABLES

Truth Table for Voltage Outputs

| VOLTAGE INPUTS <sup>(1)</sup> |        |        | LOGIC INPUTS             |                          |                                       | VOLTAGE OUTPUTS <sup>(2)</sup> |         |         | MODE <sup>(3)</sup> |
|-------------------------------|--------|--------|--------------------------|--------------------------|---------------------------------------|--------------------------------|---------|---------|---------------------|
| AUXIN                         | 3.3VIN | 1.5VIN | $\overline{\text{SHDN}}$ | $\overline{\text{STBY}}$ | $\overline{\text{CP}}$ <sup>(4)</sup> | AUXOUT                         | 3.3VOUT | 1.5VOUT |                     |
| Off                           | x      | x      | x                        | x                        | x                                     | Off                            | Off     | Off     | OFF                 |
| On                            | x      | x      | 0                        | x                        | x                                     | GND                            | GND     | GND     | Shutdown            |
| On                            | x      | x      | 1                        | x                        | 1                                     | GND                            | GND     | GND     | No Card             |
| On                            | On     | On     | 1                        | 0                        | 0                                     | On                             | Off     | Off     | Standby             |
| On                            | On     | On     | 1                        | 1                        | 0                                     | On                             | On      | On      | Card Inserted       |

- (1) For input voltages, *On* means the respective input voltage is higher than its turnon threshold voltage; otherwise, the voltage is *Off* (for AUX input, *Off* means the voltage is close to zero volt).
- (2) For output voltages, *On* means the respective power switch is turned on so the input voltage is connected to the output; *Off* means the power switch and its output discharge FET are both off; *GND* means the power switch is off but the output discharge FET is on so the voltage on the output is pulled down to 0 V.
- (3) *Mode* assigns each set of input conditions and respective output voltage results to a different name. These modes are referred to as *input conditions* in the following *Truth Table for Logic Outputs*.
- (4) CP = CPUSB and CPPE – equal to 1 when both CPUSB and CPPE signals are logic high, or equal to 0 when either  $\overline{\text{CPUSB}}$  or  $\overline{\text{CPPE}}$  is low.

Truth Table for Logic Outputs

| MODE          | INPUT CONDITIONS           |                       | LOGIC OUTPUTS             |                       |
|---------------|----------------------------|-----------------------|---------------------------|-----------------------|
|               | $\overline{\text{SYSRST}}$ | RCLKEN <sup>(1)</sup> | $\overline{\text{PERST}}$ | RCLKEN <sup>(2)</sup> |
| OFF           | X                          | X                     | 0                         | 0                     |
| Shutdown      |                            |                       |                           |                       |
| No Card       |                            |                       |                           |                       |
| Standby       |                            |                       |                           |                       |
| Card Inserted | 0                          | Hi-Z                  | 0                         | 1                     |
|               | 0                          | 0                     | 0                         | 0                     |
|               | 1                          | Hi-Z                  | 1                         | 1                     |
|               | 1                          | 0                     | 0                         | 0                     |

- (1) RCLKEN as a logic input in this column. RCLKEN is an I/O pin and it can be driven low externally, left open, or connected to high-impedance terminals, such as the gate of a MOSFET. It must not be driven high externally.
- (2) RCLKEN as a logic output in this column.

## POWER STATES

If AUXIN is not present, then all input-to-output power switches are kept off (*OFF* mode).

If AUXIN is present and  $\overline{\text{SHDN}}$  is asserted (logic low), then all input-to-output power switches are kept off and the output discharge FETs are turned on (*Shutdown* mode). If SHDN is asserted and then de-asserted, the state on the outputs is restored to the state prior to SHDN assertion.

If 3.3VIN, AUXIN and 1.5VIN are present at the input of the power switch and no card is inserted, then all input-to-output power switches are kept off and the output discharge FETs are turned on (*No Card* mode).

If 3.3VIN, AUXIN and 1.5VIN are present at the input of the power switch prior to a card being inserted, then all input-to-output power switches are turned on once a card-present signal ( $\overline{\text{CPUSB}}$  and/or  $\overline{\text{CPPE}}$ ) is detected (*Card Inserted* mode).

If a card is present and all output voltages are being applied, then the  $\overline{\text{STBY}}$  is asserted (logic low); the AUXOUT voltage is provided to the card, and the 3.3VOUT and 1.5VOUT switches are turned off (*Standby* mode).

If a card is present and all output voltages are being applied, then the 1.5VIN, or 3.3VIN is removed from the input of the power switch; the AUXOUT voltage is provided to the card and the 3.3VOUT and 1.5VOUT switches are turned off (*Standby* mode). TPS2231-3 only: If 3.3VIN is removed, the 3.3VOUT switch is turned off; and, the 1.5VOUT switch is unaffected. If 1.5VIN is removed, the 1.5VOUT switch is turned off; and, the 3.3VOUT switch is unaffected.

If prior to the insertion of a card, the AUXIN is available at the input of the power switch and 3.3VIN and/or 1.5VIN are not, or if  $\overline{\text{STBY}}$  is asserted (logic low), then no power is made available to the card (*OFF* mode). If 1.5VIN and 3.3VIN are made available at the input of the power switch after the card is inserted and  $\overline{\text{STBY}}$  is not asserted, all the output voltages are made available to the card (*Card Inserted* mode). TPS2231-3 only: If 1.5VIN or 3.3VIN is made available at the input of the power switch after the card is inserted and  $\overline{\text{STBY}}$  is not asserted, all switches above their individual UVLO thresholds will turn on.

## DISCHARGE FETs

The discharge FETs on the outputs are activated whenever the device detects that a card is not present (*No Card* mode). Activation occurs after the input-to-output power switches are turned off (*break before make*). The discharge FETs de-activate if either of the card-present lines go active low, unless the  $\overline{\text{SHDN}}$  pin is asserted.

The discharge FETs are also activated whenever the  $\overline{\text{SHDN}}$  input is asserted and stay asserted until  $\overline{\text{SHDN}}$  is de-asserted.

PARAMETER MEASUREMENT INFORMATION

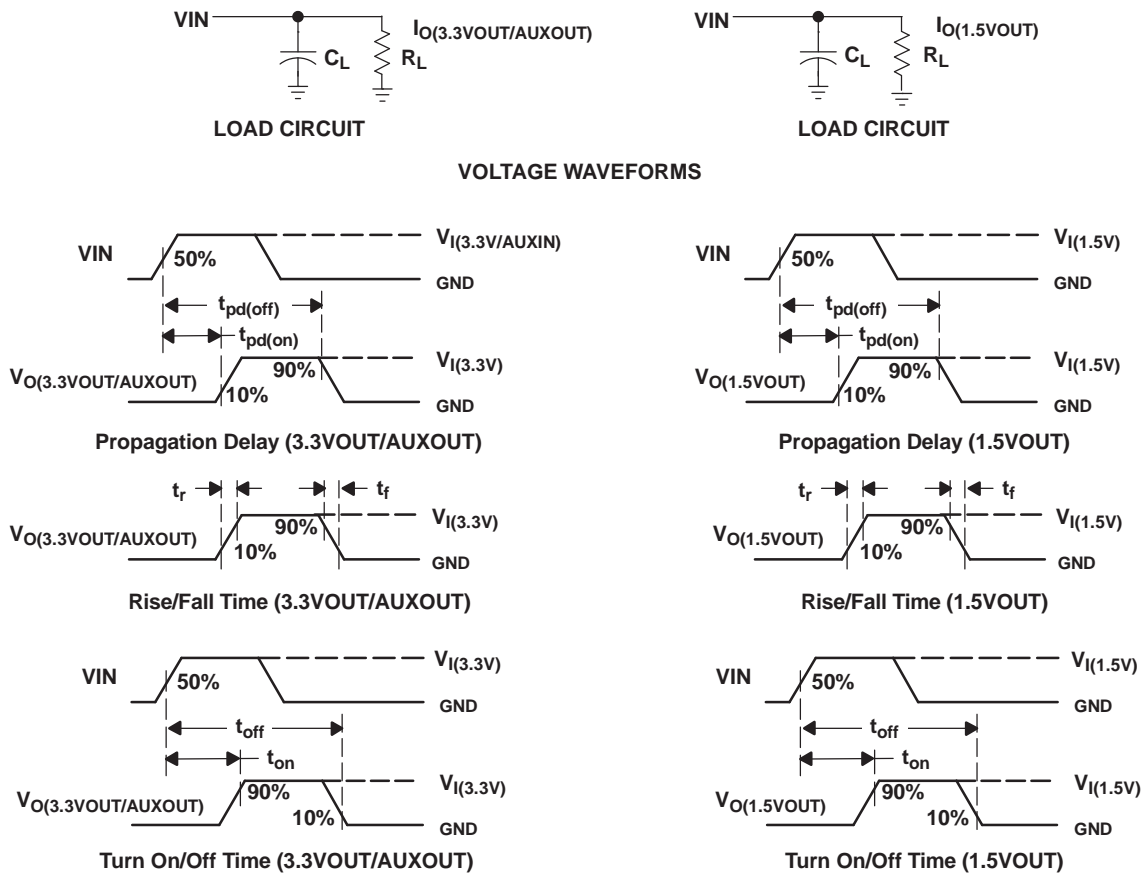


Figure 1. Test Circuits and Voltage Waveforms

TYPICAL CHARACTERISTICS

Table 1. Table of Graphs

|                                                                                      |                         | FIGURE |
|--------------------------------------------------------------------------------------|-------------------------|--------|
| Output voltage when card is inserted                                                 | vs Time                 | 2      |
| RCLKEN and $\overline{\text{PERST}}$ voltage during power up                         | vs Time                 | 3      |
| RCLKEN and $\overline{\text{PERST}}$ voltage during power down                       | vs Time                 | 4      |
| $\overline{\text{PERST}}$ asserted by $\overline{\text{SYSRST}}$ when power is on    | vs Time                 | 5      |
| $\overline{\text{PERST}}$ de-asserted by $\overline{\text{SYSRST}}$ when power is on | vs Time                 | 6      |
| Output voltage when 3.3VIN is removed                                                | vs Time                 | 7      |
| Output voltage when 1.5VIN is removed                                                | vs Time                 | 8      |
| $\overline{\text{OC}}$ response when powered into a short (3.3VOUT)                  | vs Time                 | 9      |
| Supply current of AUXIN                                                              | vs Junction temperature | 10     |
| Static drain-source on-state resistance                                              | vs Junction temperature | 11     |
| 3.3-V power switch current limit                                                     | vs Junction temperature | 12     |
| 1.5-V power switch current limit                                                     | vs Junction temperature | 13     |
| AUX power switch current limit                                                       | vs Junction temperature | 14     |
| 3.3-V power switch current limit trip                                                | vs Junction temperature | 15     |
| 1.5-V power switch current limit trip                                                | vs Junction temperature | 16     |
| AUX power switch current limit trip                                                  | vs Junction temperature | 17     |

OUTPUT VOLTAGE WHEN CARD IS INSERTED

VS  
TIME

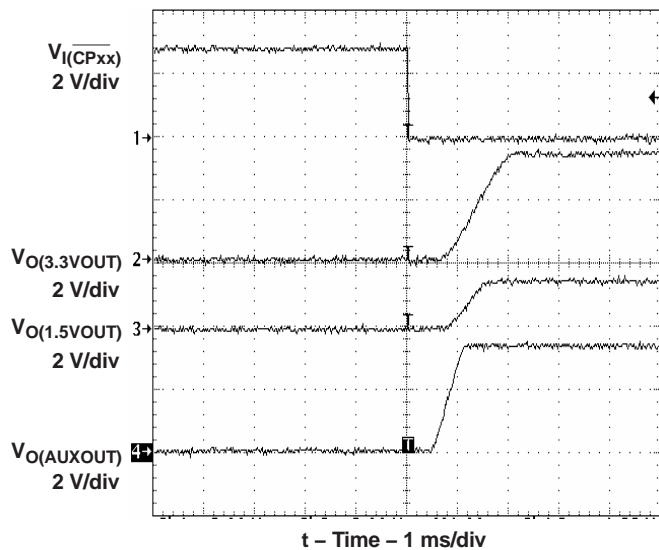


Figure 2.

RCLKEN AND  $\overline{PERST}$  VOLTAGE DURING POWER UP

VS  
TIME

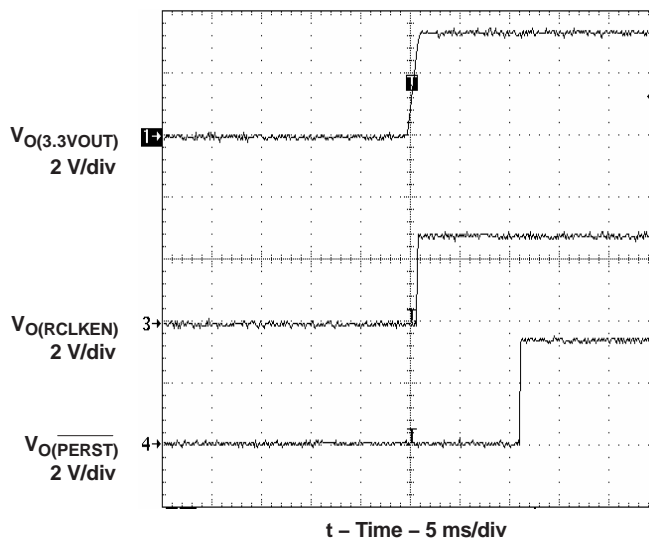


Figure 3.

RCLKEN AND  $\overline{PERST}$  VOLTAGE DURING POWER DOWN

VS  
TIME

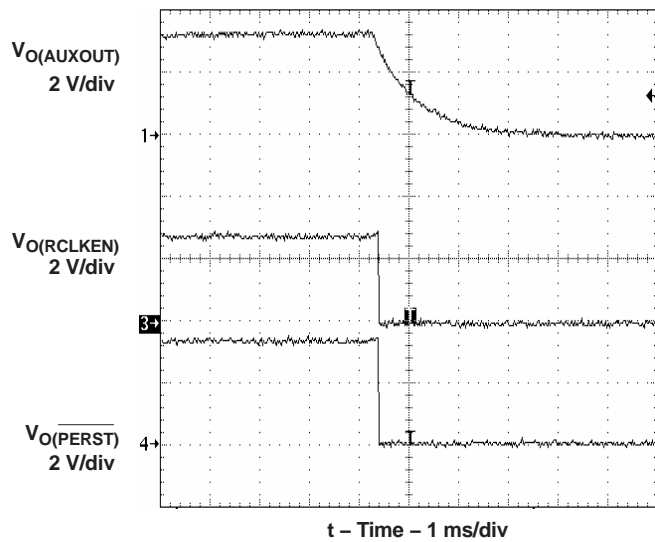


Figure 4.

$\overline{PERST}$  ASSERTED BY SYSRST WHEN POWER IS ON

VS  
TIME

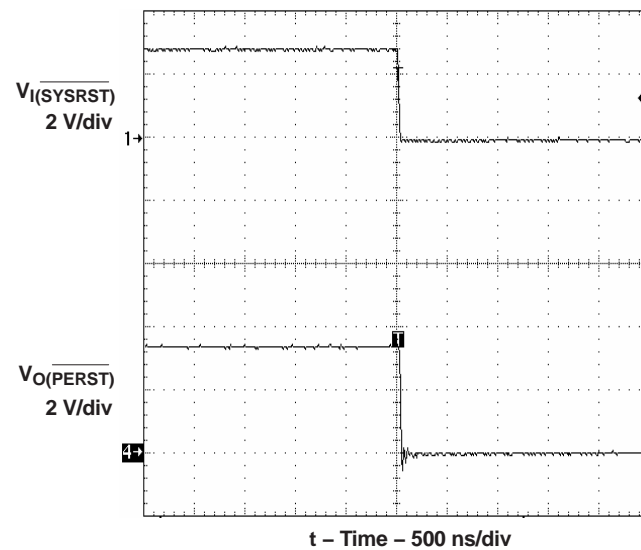


Figure 5.

**PERST DE-ASSERTED BY SYSRST WHEN POWER IS ON**  
VS  
TIME

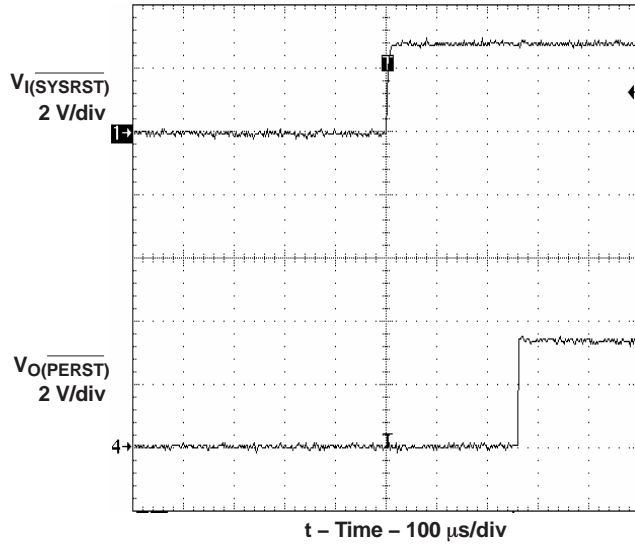


Figure 6.

**OUTPUT VOLTAGE WHEN 3.3VIN IS REMOVED**  
VS  
TIME

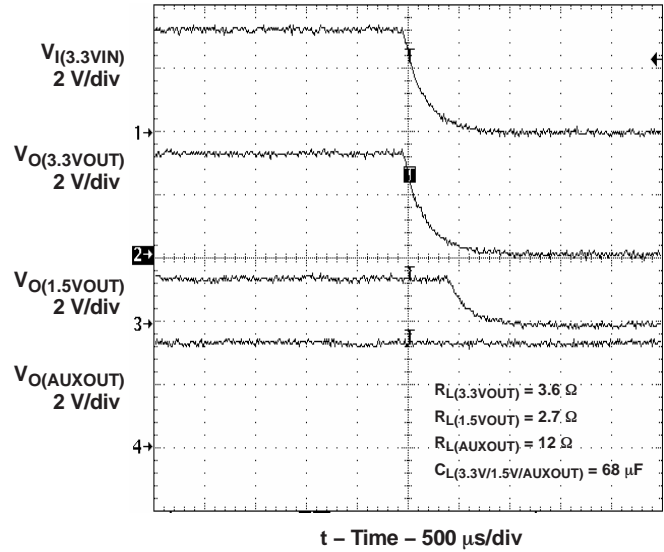


Figure 7.

**OUTPUT VOLTAGE WHEN 1.5VIN IS REMOVED**  
VS  
TIME

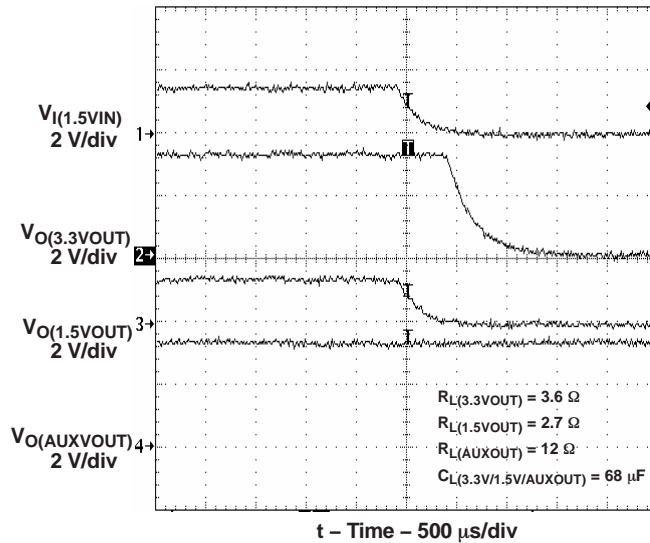


Figure 8.

**OC RESPONSE WHEN POWERED INTO A SHORT (3.3VOUT)**  
VS  
TIME

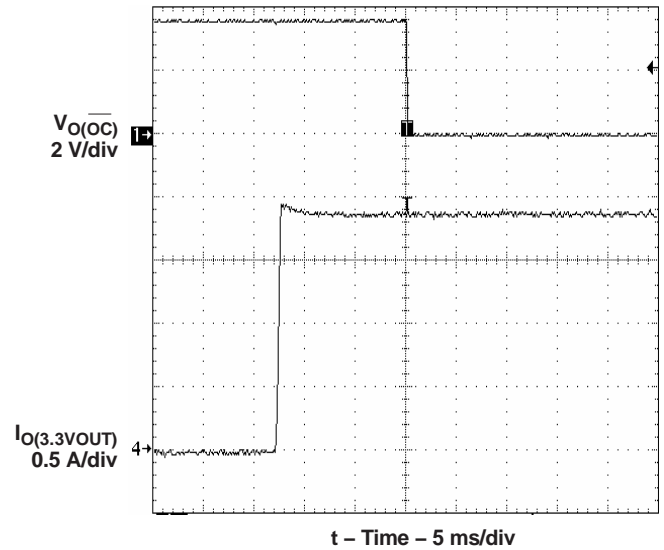


Figure 9.



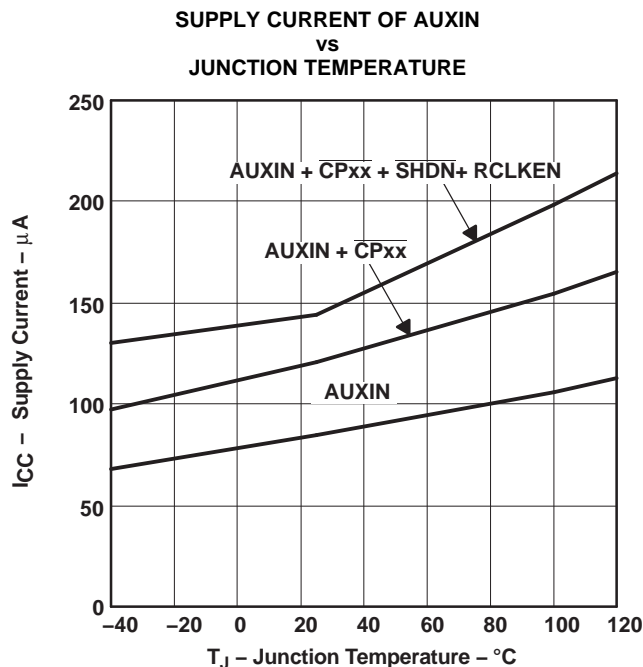


Figure 10.

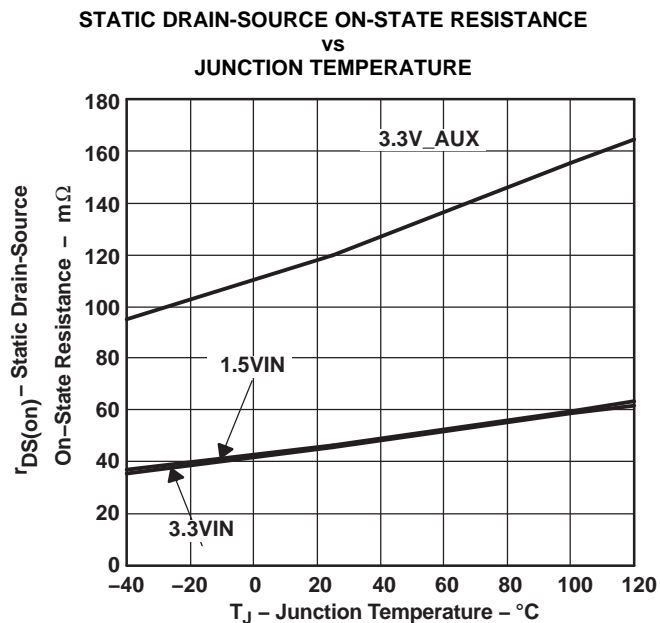


Figure 11.

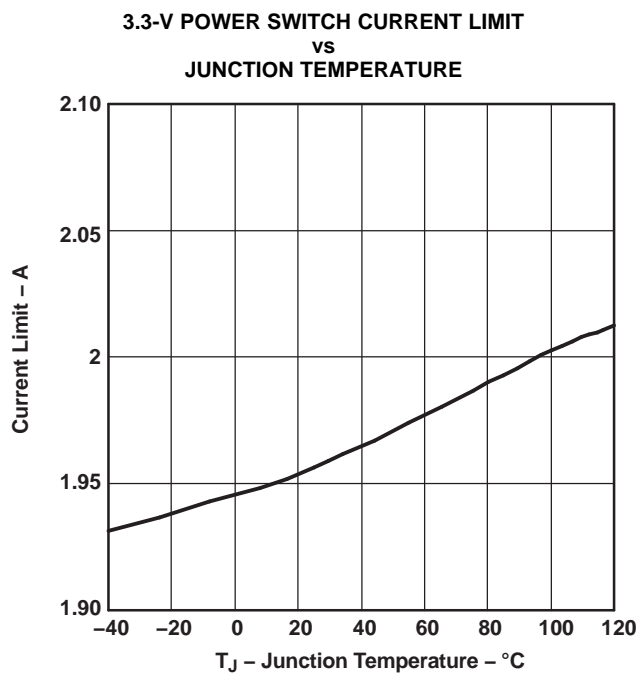


Figure 12.

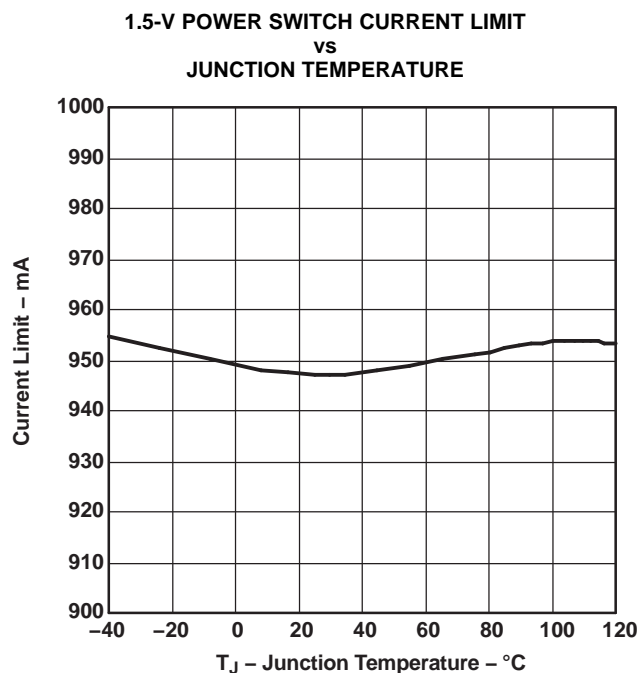


Figure 13.

AUX POWER SWITCH CURRENT LIMIT  
vs  
JUNCTION TEMPERATURE

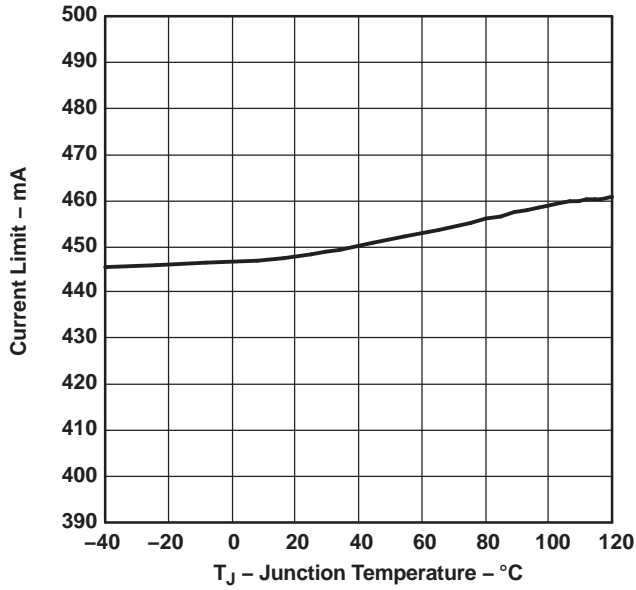


Figure 14.

3.3-V POWER SWITCH CURRENT LIMIT TRIP  
vs  
JUNCTION TEMPERATURE

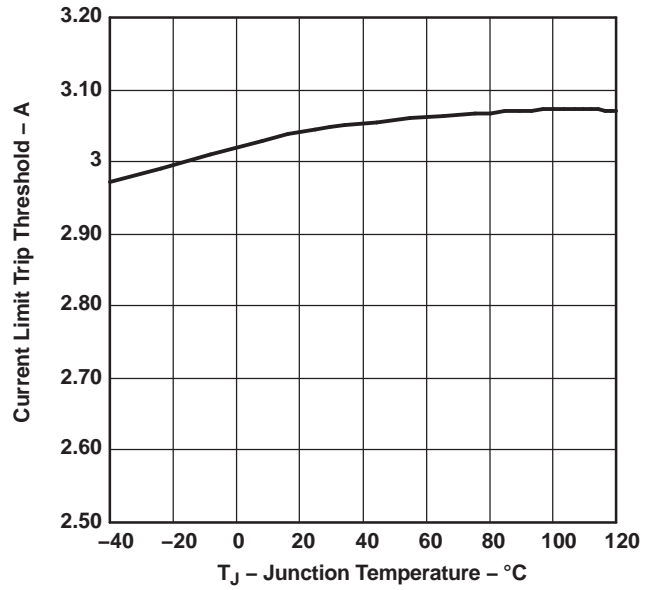


Figure 15.

1.5-V POWER SWITCH CURRENT LIMIT TRIP  
vs  
JUNCTION TEMPERATURE

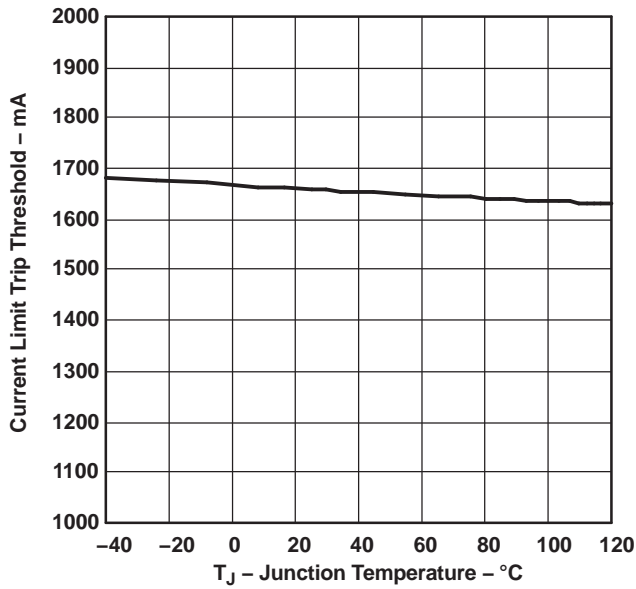


Figure 16.

AUX POWER SWITCH CURRENT LIMIT TRIP  
vs  
JUNCTION TEMPERATURE

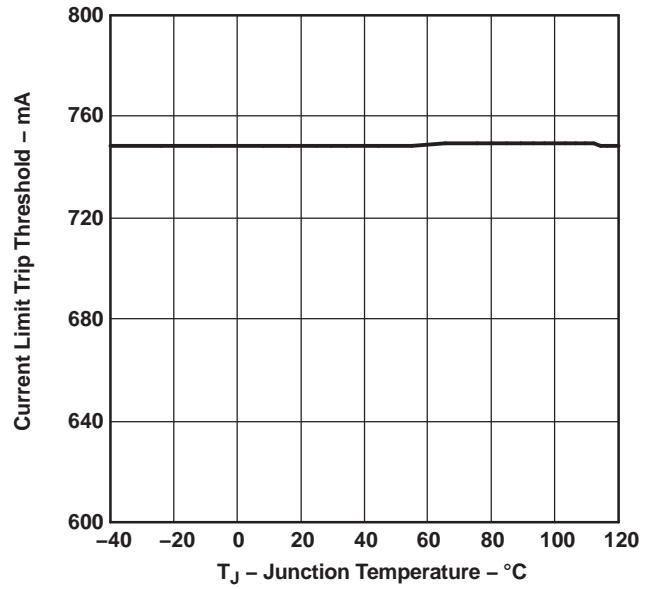


Figure 17.

## APPLICATION INFORMATION

### INTRODUCTION TO ExpressCard

An ExpressCard module is an add-in card with a serial interface based on PCI Express and/or Universal Serial Bus (USB) technologies. An ExpressCard comes in two form factors defined as ExpressCard|34 or ExpressCard|54. The difference, as defined by the name, is the width of the module, 34 mm or 54 mm, respectively. Host systems supporting the ExpressCard module can support either the ExpressCard|34 or ExpressCard|54 or both.

### ExpressCard POWER REQUIREMENTS

Regardless of which ExpressCard module is used, the power requirements as defined in the ExpressCard Standard apply to both on an individual slot basis. The host system is required to supply 3.3 V, 1.5 V, and AUX to each of the ExpressCard slots. However, the voltage is only applied after an ExpressCard is inserted into the slot.

The ExpressCard connector has two pins,  $\overline{\text{CPPE}}$  and  $\overline{\text{CPUSB}}$ , that are used to signal the host when a card is inserted. If the ExpressCard module itself connects the  $\overline{\text{CPPE}}$  to ground, the logic low level on that signal indicates to the host that a card supporting PCI Express has been inserted. If  $\overline{\text{CPUSB}}$  is connected to ground, then the ExpressCard module supports the USB interface. If both PCI Express and USB are supported by the ExpressCard module, then both signals,  $\overline{\text{CPPE}}$  and  $\overline{\text{CPUSB}}$ , must be connected to ground.

In addition to the Card Present signals ( $\overline{\text{CPPE}}$  and  $\overline{\text{CPUSB}}$ ), the host system determines when to apply power to the ExpressCard module based on the state of the system. The state of the system is defined by the state of the 3.3 V, 1.5 V, and AUX input voltage rails. For the sake of simplicity, the 3.3-V and 1.5-V rails are defined as the primary voltage rails as oppose to the auxiliary voltage rail, AUX.

### ExpressCard POWER SWITCH OPERATION

The ExpressCard power switch resides on the host, and its main function is to control when to send power to the ExpressCard slot. The ExpressCard power switch makes decisions based on the Card Present inputs and on the state of the host system as defined by the primary and auxiliary voltage rails.

The following conditions define the operation of the host power controller:

1. When both primary power and auxiliary power at the input of the ExpressCard power switch are off, then all power to the ExpressCard connector is off regardless of whether a card is present.
2. When both primary power and auxiliary power at the input of the ExpressCard power switch are on, then power is only applied to the ExpressCard after the ExpressCard power switch detects that a card is present.
3. When primary power (either +3.3 V or +1.5 V) at the input of the ExpressCard power switch is off and auxiliary power at the input of the ExpressCard power switch is on, then the ExpressCard power switch behaves in the following manner:
  - (a) If neither of the Card Present inputs is detected (no card inserted), then no power is applied to the ExpressCard slot.
  - (b) If the card is inserted after the system has entered this power state, then no power is applied to the ExpressCard slot.
  - (c) If the card is inserted prior to the removal of the primary power (either +3.3 V or +1.5 V or both) at the input of the ExpressCard power switch, then only the primary power (both +3.3 V and +1.5 V) is removed and the auxiliary power is sent to the ExpressCard slot.

Figure 18 through Figure 23 illustrate the timing relationships between power/logic inputs and outputs of ExpressCard.

EXPRESS CARD TIMING DIAGRAMS

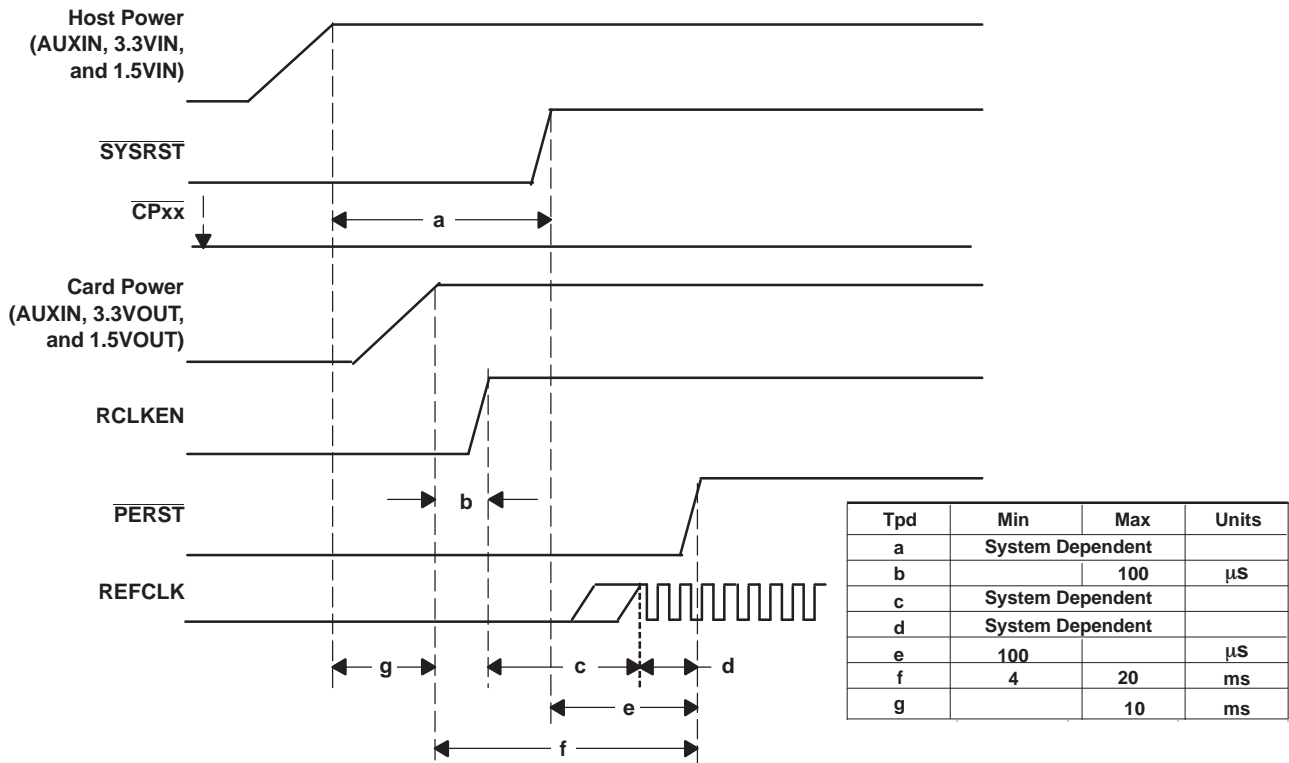


Figure 18. Timing Signals - Card Present Before Host Power Is On

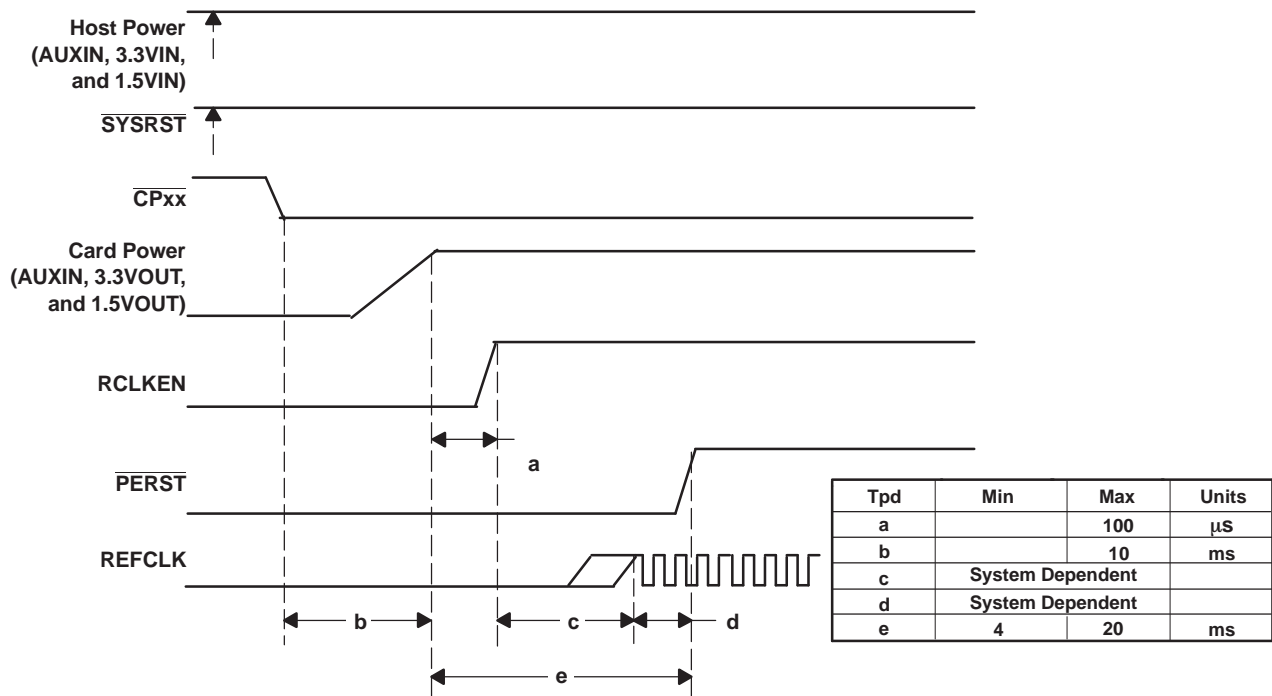
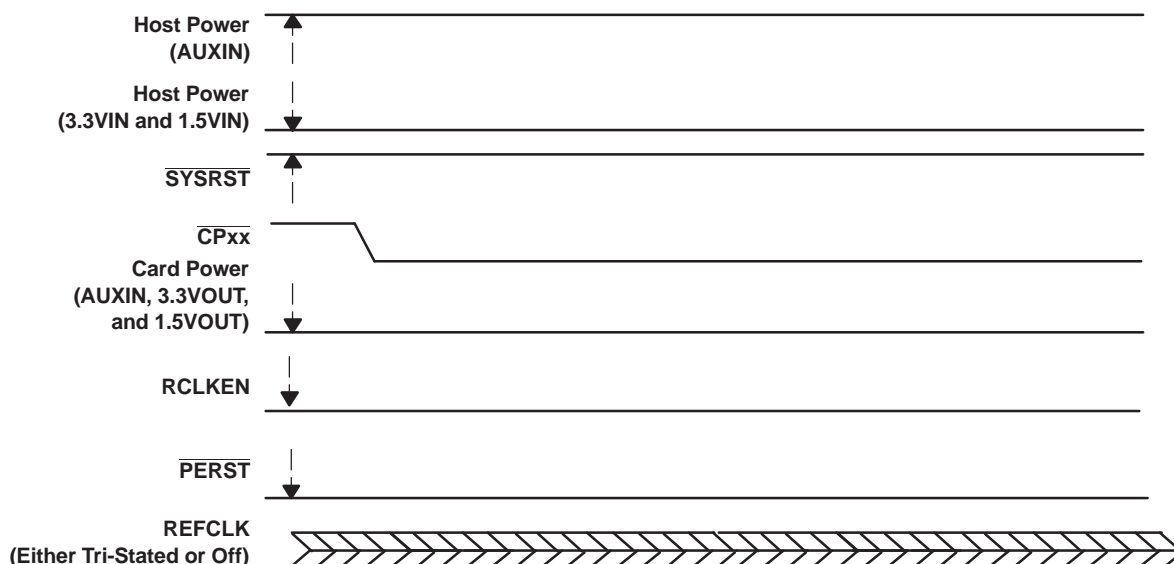


Figure 19. Timing Signals - Host Power Is On Prior to Card Insertion



Note: Once 3.3 V and 1.5 V are applied, the power switch follows the power-up sequence of Figure 18 or Figure 19.

Figure 20. Timing Signals - Host System In Standby Prior to Card Insertion

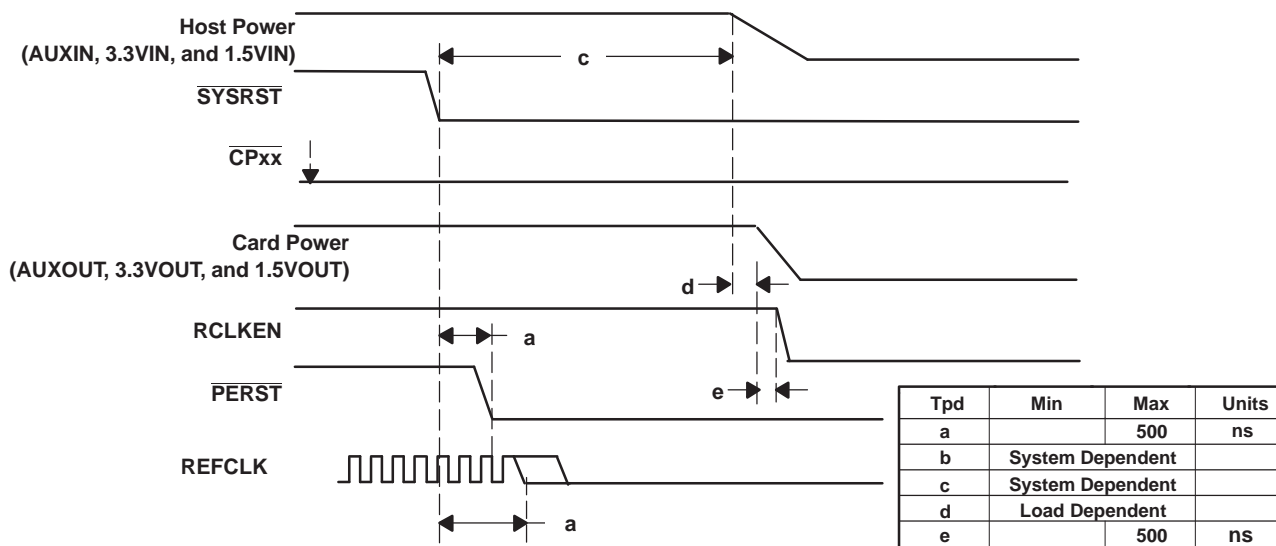


Figure 21. Timing Signals - Host-Controlled Power Down

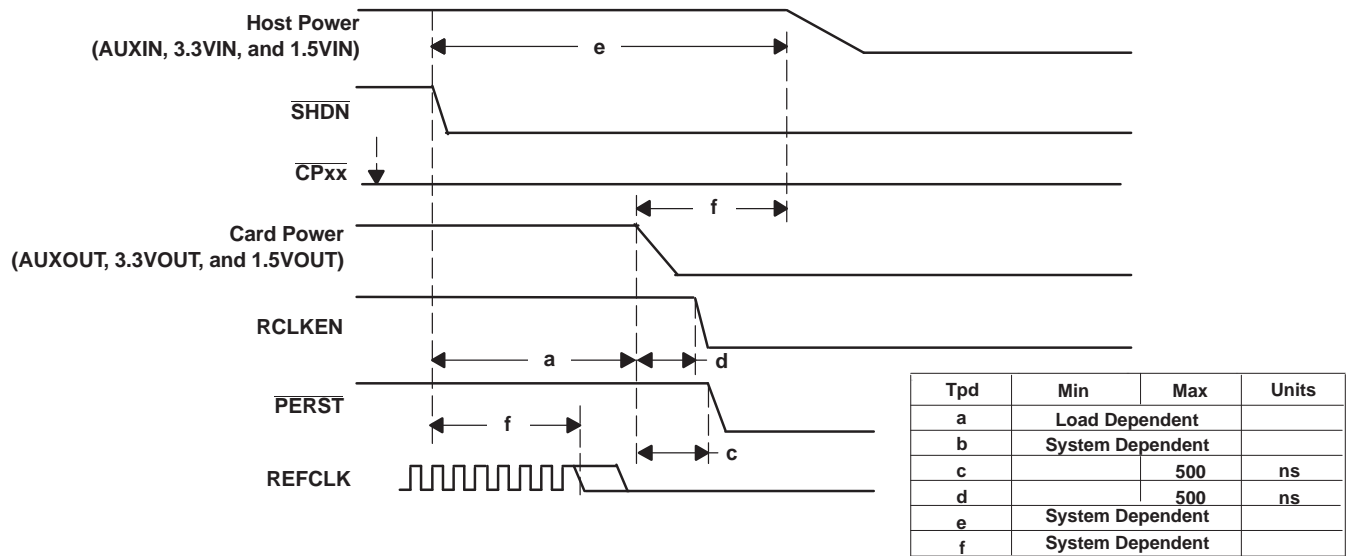


Figure 22. Timing Signals - Controlled Power Down When  $\overline{\text{SHDN}}$  Asserted

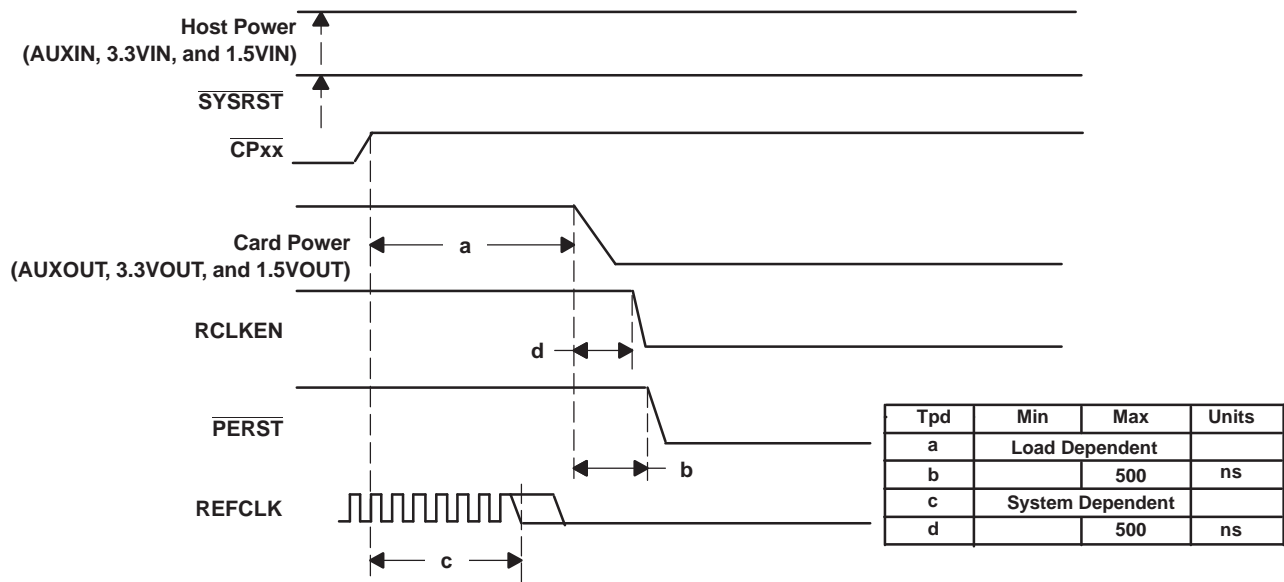


Figure 23. Timing Signals - Surprise Card Removal

## REVISION HISTORY

NOTE: Page numbers in the latest revision may differ from previous versions.

---

### Changes from Revision F (August 2007) to Revision G Page

- Changed note <sup>(1)</sup> of the Available Options table. .... 2

(1) The TPS2231MRGP is identical to the TPS2231 with the exception of the PowerPAD dimensions. See the Thermal Pad Mechanical data portion of this data sheet for specific information. The thermal pad for the TPS2231MRGP and TPS2231MRGP-1 is 2,2 mm x 2,2 mm; the thermal pad for the TPS2231RGP is 2,7 mm x 2,7 mm.

---

### Changes from Revision G (August 2007) to Revision H Page

- Changed From; reel is rotated 90°C To: reel is rotated 180°C ..... 2

---

### Changes from Revision H (September 2007) to Revision I Page

- Added TPS2231MRGP-2 and <sup>(2)</sup> to the Available Options table. .... 2
- Added TPS2231, TPS2231-1, and TPS2231-1 values to the Logic input supply current ..... 4
- Added Note C to the Function Block Diagram ..... 9

(2) The TPS2231MRGP-2 is identical to the TPS2231MRGP with the exception that the orientation of the part in the reel is rotated 90° and does not have an internal pull-up resistor between AUX IN and SYSRST. See the Package Materials Information portion of this data sheet for specific information.

---

### Changes from Revision I (November 2007) to Revision J Page

- Added TPS2231-3 to the Available Options table. .... 2
  - Added explanatory footnote to Available Options table regarding TPS2231MRGP-3 ..... 2
  - Added TPS2231-3 test condition statement to UVLO spec. .... 5
  - Added power state explanation for TPS2231-3 device. .... 13
-

**PACKAGING INFORMATION**

| Orderable Device | Status<br>(1) | Package Type | Package Drawing | Pins | Package Qty | Eco Plan<br>(2) | Lead finish/<br>Ball material<br>(6) | MSL Peak Temp<br>(3) | Op Temp (°C) | Device Marking<br>(4/5) | Samples                 |
|------------------|---------------|--------------|-----------------|------|-------------|-----------------|--------------------------------------|----------------------|--------------|-------------------------|-------------------------|
| TPS2231MRGPR     | ACTIVE        | QFN          | RGP             | 20   | 3000        | RoHS & Green    | NIPDAU                               | Level-2-260C-1 YEAR  | -40 to 85    | 2231M                   | <a href="#">Samples</a> |
| TPS2231MRGPR-2   | ACTIVE        | QFN          | RGP             | 20   | 3000        | RoHS & Green    | NIPDAU                               | Level-2-260C-1 YEAR  | -40 to 85    | 2231-2                  | <a href="#">Samples</a> |
| TPS2231MRGPR-3   | ACTIVE        | QFN          | RGP             | 20   | 3000        | RoHS & Green    | NIPDAU                               | Level-2-260C-1 YEAR  | -40 to 85    | 2231-3                  | <a href="#">Samples</a> |
| TPS2231MRGPT-3   | ACTIVE        | QFN          | RGP             | 20   | 250         | RoHS & Green    | NIPDAU                               | Level-2-260C-1 YEAR  | -40 to 85    | 2231-3                  | <a href="#">Samples</a> |
| TPS2231PW        | ACTIVE        | TSSOP        | PW              | 20   | 70          | RoHS & Green    | NIPDAU                               | Level-1-260C-UNLIM   | -40 to 85    | TPS2231                 | <a href="#">Samples</a> |
| TPS2231PWP       | ACTIVE        | HTSSOP       | PWP             | 24   | 60          | RoHS & Green    | NIPDAU                               | Level-2-260C-1 YEAR  | -40 to 85    | TPS2231                 | <a href="#">Samples</a> |
| TPS2231PWPR      | ACTIVE        | HTSSOP       | PWP             | 24   | 2000        | RoHS & Green    | NIPDAU                               | Level-2-260C-1 YEAR  | -40 to 85    | TPS2231                 | <a href="#">Samples</a> |
| TPS2231PWR       | ACTIVE        | TSSOP        | PW              | 20   | 2000        | RoHS & Green    | NIPDAU                               | Level-1-260C-UNLIM   | -40 to 85    | TPS2231                 | <a href="#">Samples</a> |
| TPS2231PWRG4     | ACTIVE        | TSSOP        | PW              | 20   | 2000        | RoHS & Green    | NIPDAU                               | Level-1-260C-UNLIM   | -40 to 85    | TPS2231                 | <a href="#">Samples</a> |
| TPS2231RGPR      | ACTIVE        | QFN          | RGP             | 20   | 3000        | RoHS & Green    | NIPDAU                               | Level-2-260C-1 YEAR  | -40 to 85    | 2231                    | <a href="#">Samples</a> |
| TPS2231RGPT      | ACTIVE        | QFN          | RGP             | 20   | 250         | RoHS & Green    | NIPDAU                               | Level-2-260C-1 YEAR  |              | 2231                    | <a href="#">Samples</a> |

(1) The marketing status values are defined as follows:

**ACTIVE:** Product device recommended for new designs.

**LIFEBUY:** TI has announced that the device will be discontinued, and a lifetime-buy period is in effect.

**NRND:** Not recommended for new designs. Device is in production to support existing customers, but TI does not recommend using this part in a new design.

**PREVIEW:** Device has been announced but is not in production. Samples may or may not be available.

**OBSELETE:** TI has discontinued the production of the device.

(2) **RoHS:** TI defines "RoHS" to mean semiconductor products that are compliant with the current EU RoHS requirements for all 10 RoHS substances, including the requirement that RoHS substance do not exceed 0.1% by weight in homogeneous materials. Where designed to be soldered at high temperatures, "RoHS" products are suitable for use in specified lead-free processes. TI may reference these types of products as "Pb-Free".

**RoHS Exempt:** TI defines "RoHS Exempt" to mean products that contain lead but are compliant with EU RoHS pursuant to a specific EU RoHS exemption.

**Green:** TI defines "Green" to mean the content of Chlorine (Cl) and Bromine (Br) based flame retardants meet JS709B low halogen requirements of <=1000ppm threshold. Antimony trioxide based flame retardants must also meet the <=1000ppm threshold requirement.

(3) MSL, Peak Temp. - The Moisture Sensitivity Level rating according to the JEDEC industry standard classifications, and peak solder temperature.



(4) There may be additional marking, which relates to the logo, the lot trace code information, or the environmental category on the device.

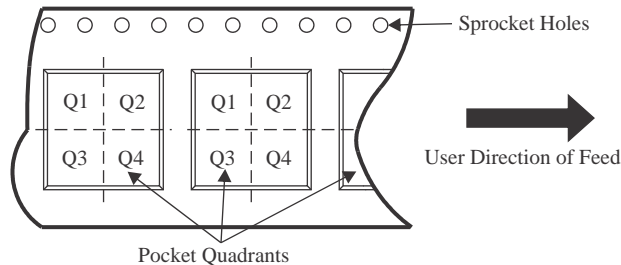
(5) Multiple Device Markings will be inside parentheses. Only one Device Marking contained in parentheses and separated by a "~" will appear on a device. If a line is indented then it is a continuation of the previous line and the two combined represent the entire Device Marking for that device.

(6) Lead finish/Ball material - Orderable Devices may have multiple material finish options. Finish options are separated by a vertical ruled line. Lead finish/Ball material values may wrap to two lines if the finish value exceeds the maximum column width.

**Important Information and Disclaimer:**The information provided on this page represents TI's knowledge and belief as of the date that it is provided. TI bases its knowledge and belief on information provided by third parties, and makes no representation or warranty as to the accuracy of such information. Efforts are underway to better integrate information from third parties. TI has taken and continues to take reasonable steps to provide representative and accurate information but may not have conducted destructive testing or chemical analysis on incoming materials and chemicals. TI and TI suppliers consider certain information to be proprietary, and thus CAS numbers and other limited information may not be available for release.

In no event shall TI's liability arising out of such information exceed the total purchase price of the TI part(s) at issue in this document sold by TI to Customer on an annual basis.

**TAPE AND REEL INFORMATION**

**QUADRANT ASSIGNMENTS FOR PIN 1 ORIENTATION IN TAPE**


\*All dimensions are nominal

| Device         | Package Type | Package Drawing | Pins | SPQ  | Reel Diameter (mm) | Reel Width W1 (mm) | A0 (mm) | B0 (mm) | K0 (mm) | P1 (mm) | W (mm) | Pin1 Quadrant |
|----------------|--------------|-----------------|------|------|--------------------|--------------------|---------|---------|---------|---------|--------|---------------|
| TPS2231MRGPR   | QFN          | RGP             | 20   | 3000 | 330.0              | 12.4               | 4.25    | 4.25    | 1.15    | 8.0     | 12.0   | Q2            |
| TPS2231MRGPR-2 | QFN          | RGP             | 20   | 3000 | 330.0              | 12.4               | 4.25    | 4.25    | 1.15    | 8.0     | 12.0   | Q1            |
| TPS2231MRGPR-3 | QFN          | RGP             | 20   | 3000 | 330.0              | 12.4               | 4.25    | 4.25    | 1.15    | 8.0     | 12.0   | Q2            |
| TPS2231MRGPT-3 | QFN          | RGP             | 20   | 250  | 180.0              | 12.4               | 4.25    | 4.25    | 1.15    | 8.0     | 12.0   | Q2            |
| TPS2231PWPR    | HTSSOP       | PWP             | 24   | 2000 | 330.0              | 16.4               | 6.95    | 8.3     | 1.6     | 8.0     | 16.0   | Q1            |
| TPS2231PWR     | TSSOP        | PW              | 20   | 2000 | 330.0              | 16.4               | 6.95    | 7.1     | 1.6     | 8.0     | 16.0   | Q1            |
| TPS2231RGPR    | QFN          | RGP             | 20   | 3000 | 330.0              | 12.4               | 4.25    | 4.25    | 1.15    | 8.0     | 12.0   | Q2            |
| TPS2231RGPT    | QFN          | RGP             | 20   | 250  | 180.0              | 12.4               | 4.25    | 4.25    | 1.15    | 8.0     | 12.0   | Q2            |

**TAPE AND REEL BOX DIMENSIONS**


\*All dimensions are nominal

| Device         | Package Type | Package Drawing | Pins | SPQ  | Length (mm) | Width (mm) | Height (mm) |
|----------------|--------------|-----------------|------|------|-------------|------------|-------------|
| TPS2231MRGPR   | QFN          | RGP             | 20   | 3000 | 346.0       | 346.0      | 33.0        |
| TPS2231MRGPR-2 | QFN          | RGP             | 20   | 3000 | 346.0       | 346.0      | 33.0        |
| TPS2231MRGPR-3 | QFN          | RGP             | 20   | 3000 | 346.0       | 346.0      | 33.0        |
| TPS2231MRGPT-3 | QFN          | RGP             | 20   | 250  | 210.0       | 185.0      | 35.0        |
| TPS2231PWPR    | HTSSOP       | PWP             | 24   | 2000 | 356.0       | 356.0      | 35.0        |
| TPS2231PWR     | TSSOP        | PW              | 20   | 2000 | 356.0       | 356.0      | 35.0        |
| TPS2231RGPR    | QFN          | RGP             | 20   | 3000 | 346.0       | 346.0      | 33.0        |
| TPS2231RGPT    | QFN          | RGP             | 20   | 250  | 210.0       | 185.0      | 35.0        |

**TUBE**


\*All dimensions are nominal

| Device     | Package Name | Package Type | Pins | SPQ | L (mm) | W (mm) | T (μm) | B (mm) |
|------------|--------------|--------------|------|-----|--------|--------|--------|--------|
| TPS2231PW  | PW           | TSSOP        | 20   | 70  | 530    | 10.2   | 3600   | 3.5    |
| TPS2231PWP | PWP          | HTSSOP       | 24   | 60  | 530    | 10.2   | 3600   | 3.5    |

## GENERIC PACKAGE VIEW

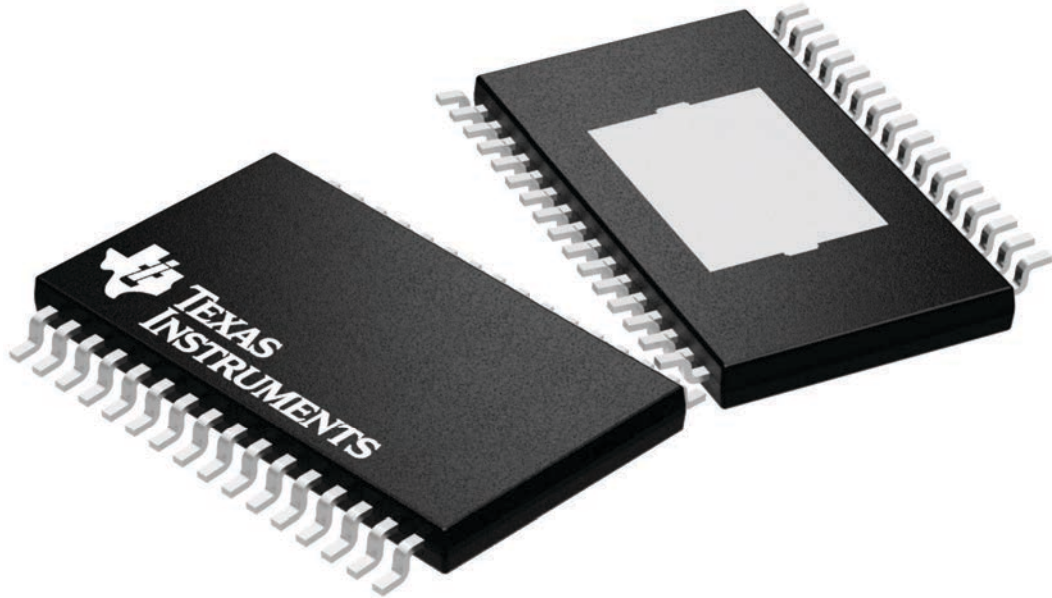
**DAP 32**

**PowerPAD™ TSSOP - 1.2 mm max height**

8.1 x 11, 0.65 mm pitch

PLASTIC SMALL OUTLINE

This image is a representation of the package family, actual package may vary.  
Refer to the product data sheet for package details.



4225303/A

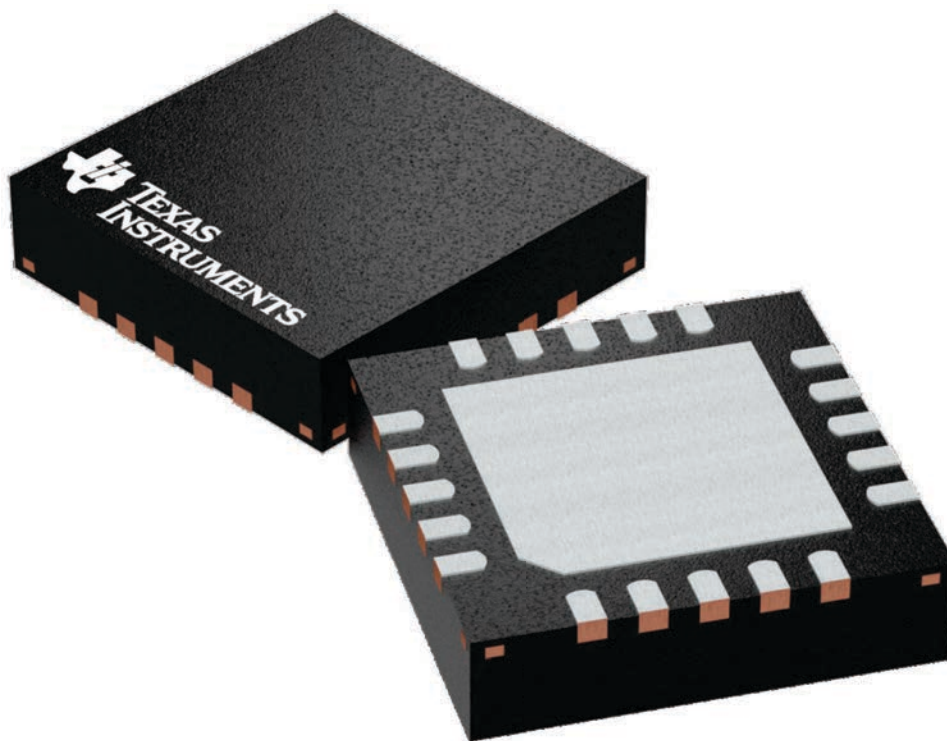
## GENERIC PACKAGE VIEW

**RGP 20**

**VQFN - 1 mm max height**

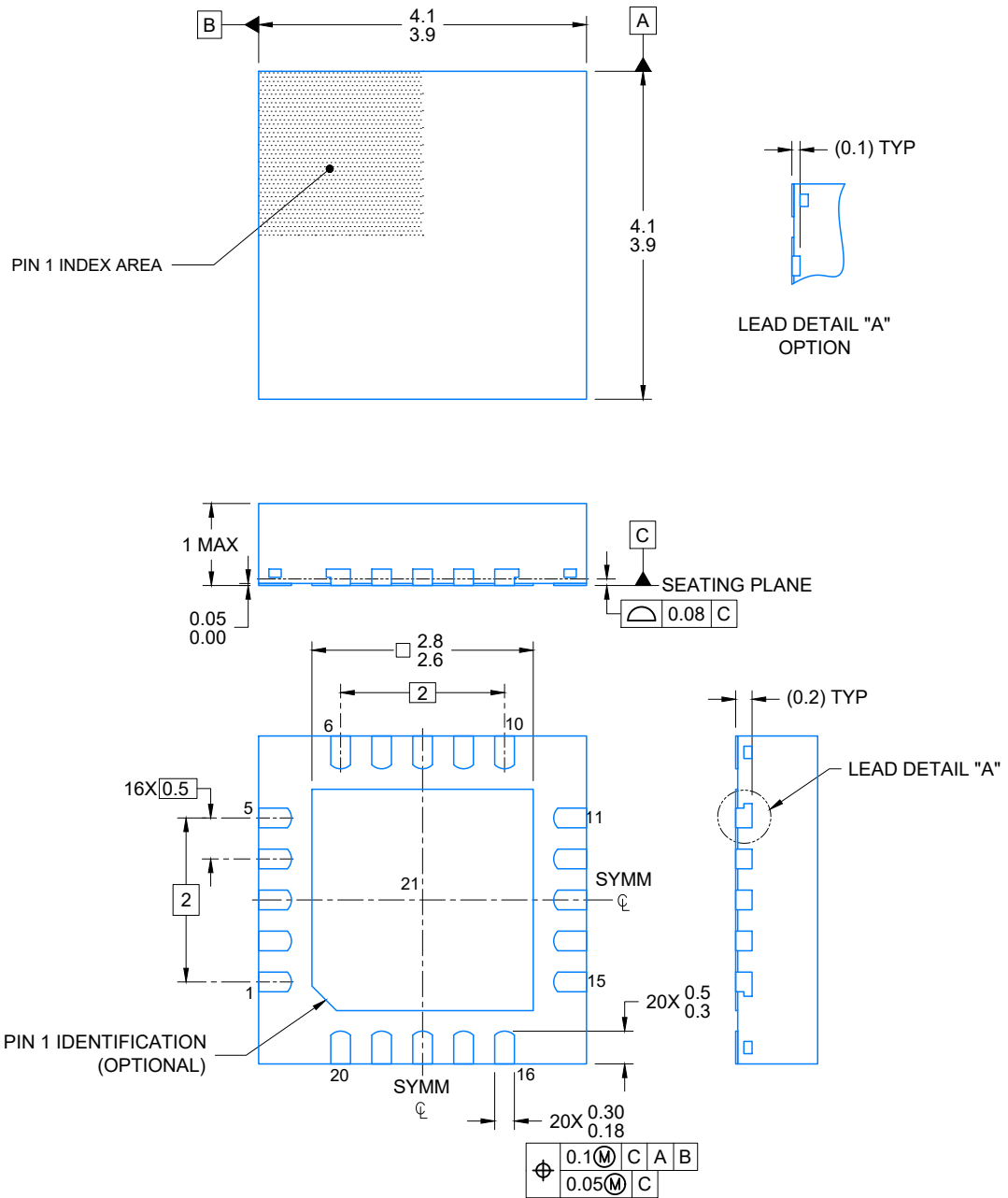
4 x 4, 0.5 mm pitch

VERY THIN QUAD FLATPACK



Images above are just a representation of the package family, actual package may vary.  
Refer to the product data sheet for package details.

4224735/A



4219028/A 12/2018

NOTES:

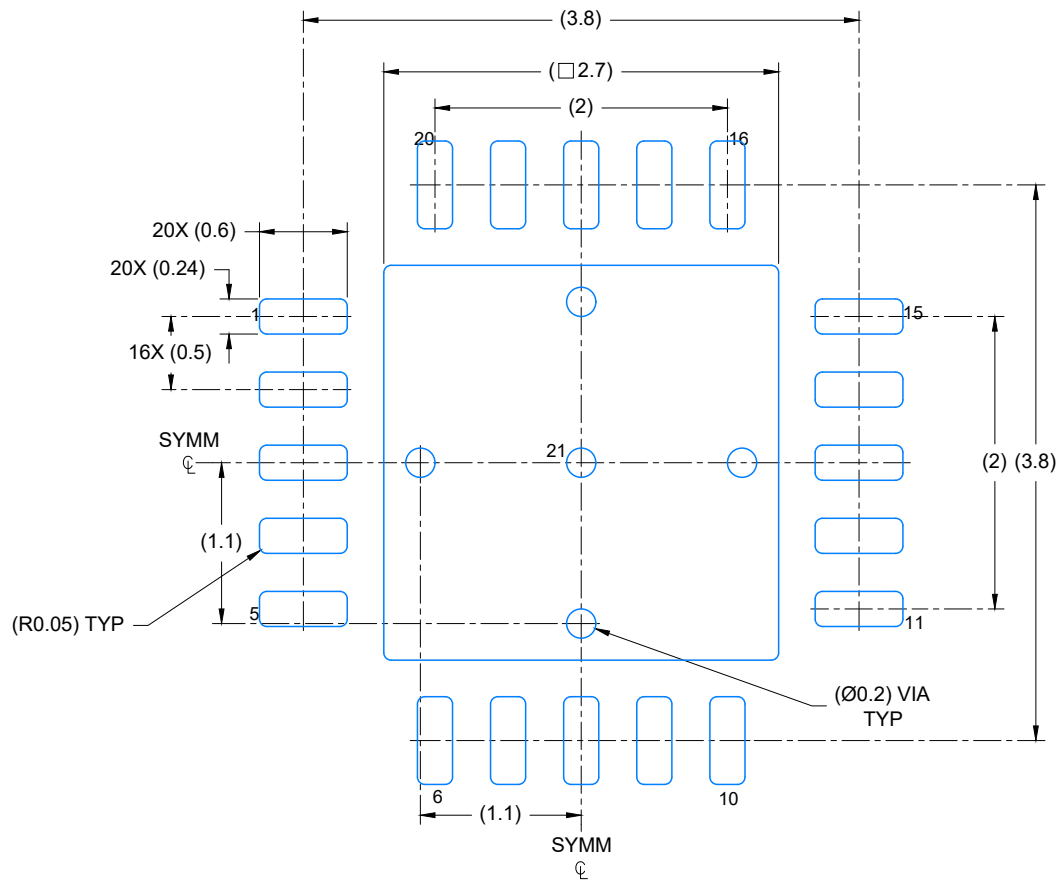
1. All linear dimensions are in millimeters. Any dimensions in parenthesis are for reference only. Dimensioning and tolerancing per ASME Y14.5M.
2. This drawing is subject to change without notice.
3. The package thermal pad must be soldered to the printed circuit board for optimal thermal and mechanical performance.

# EXAMPLE BOARD LAYOUT

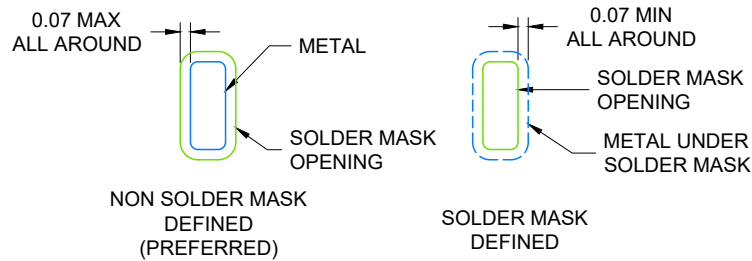
VQFN - 1 mm max height

RGP0020D

PLASTIC QUAD FLATPACK- NO LEAD



LAND PATTERN EXAMPLE  
EXPOSED METAL SHOWN  
SCALE: 20X



SOLDER MASK DETAILS

4219028/A 12/2018

NOTES: (continued)

4. This package is designed to be soldered to a thermal pad on the board. For more information, see Texas Instruments literature number SLUA271 ([www.ti.com/lit/sluea271](http://www.ti.com/lit/sluea271)).
5. Vias are optional depending on application, refer to device data sheet. If any vias are implemented, refer to their locations shown on this view. It is recommended that vias under paste be filled, plugged or tented.

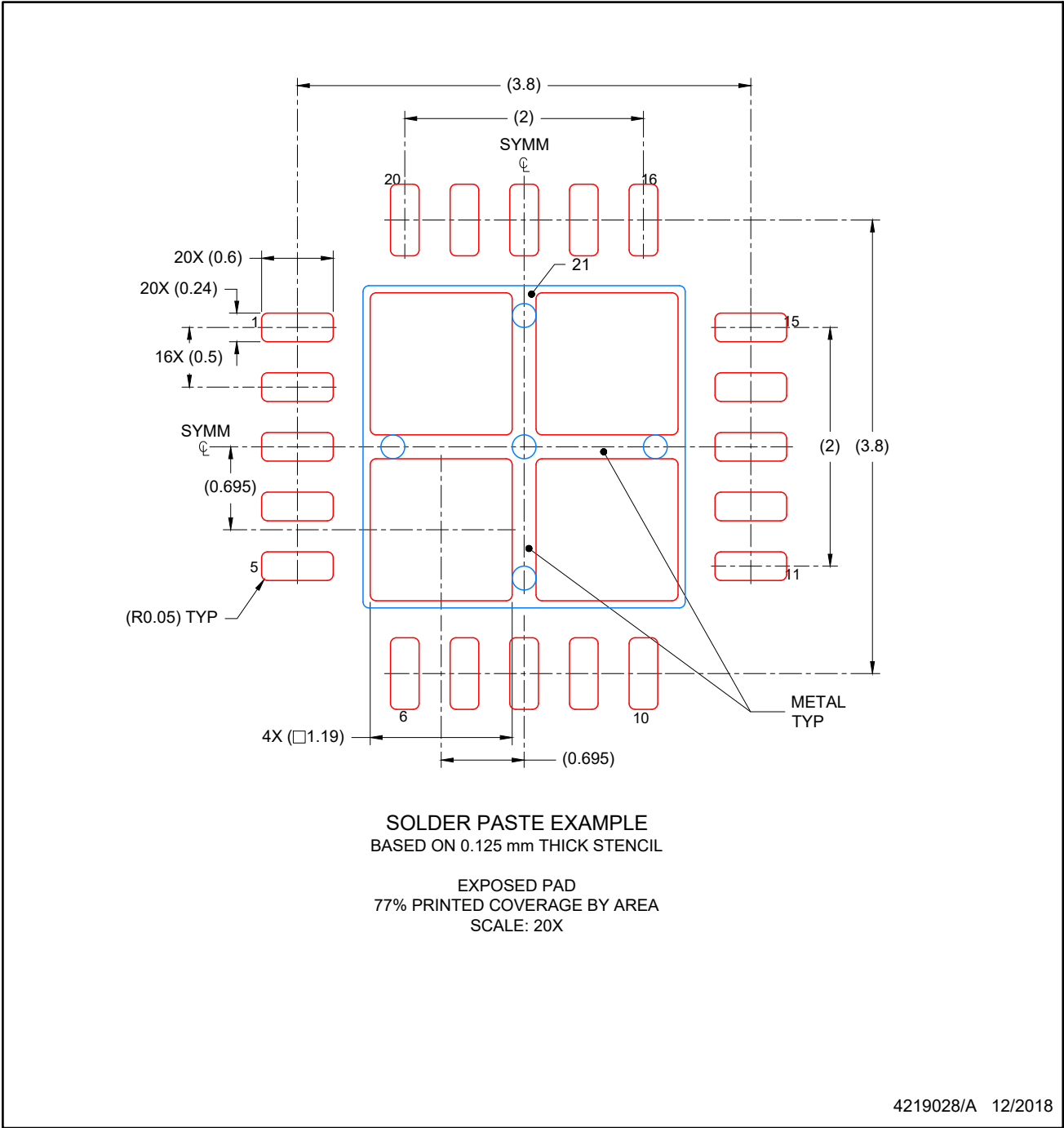


# EXAMPLE STENCIL DESIGN

RGP0020D

VQFN - 1 mm max height

PLASTIC QUAD FLATPACK- NO LEAD

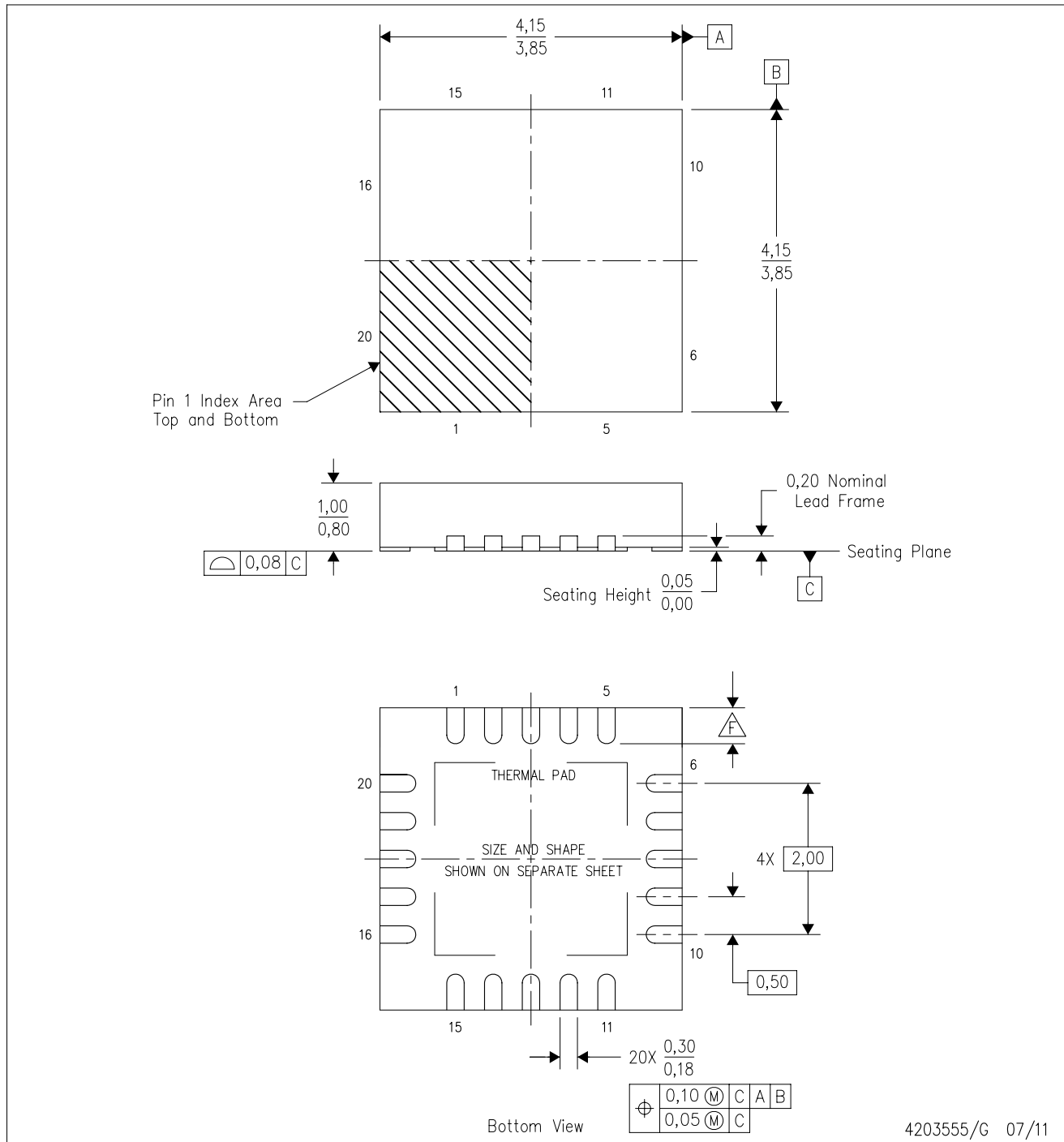


NOTES: (continued)

- 6. Laser cutting apertures with trapezoidal walls and rounded corners may offer better paste release. IPC-7525 may have alternate design recommendations.

RGP (S-PVQFN-N20)

PLASTIC QUAD FLATPACK NO-LEAD



- NOTES:
- All linear dimensions are in millimeters. Dimensioning and tolerancing per ASME Y14.5M-1994.
  - This drawing is subject to change without notice.
  - QFN (Quad Flatpack No-Lead) package configuration.
  - The package thermal pad must be soldered to the board for thermal and mechanical performance.
  - See the additional figure in the Product Data Sheet for details regarding the exposed thermal pad features and dimensions.
- Check thermal pad mechanical drawing in the product datasheet for nominal lead length dimensions.

# THERMAL PAD MECHANICAL DATA

RGP (S-PVQFN-N20)

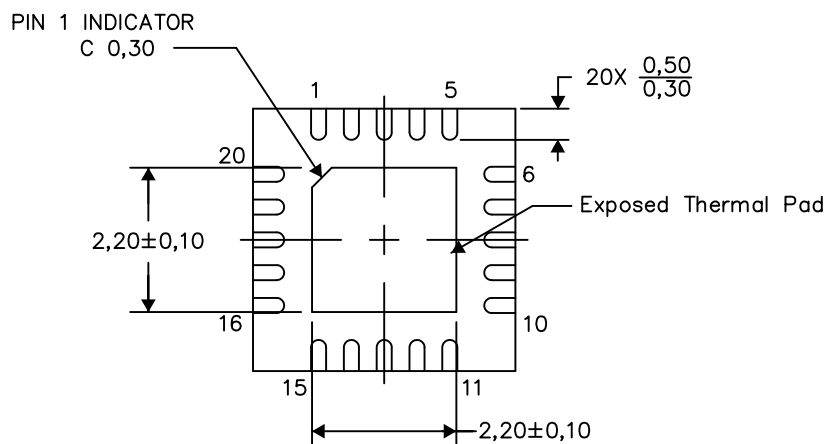
PLASTIC QUAD FLATPACK NO-LEAD

## THERMAL INFORMATION

This package incorporates an exposed thermal pad that is designed to be attached directly to an external heatsink. The thermal pad must be soldered directly to the printed circuit board (PCB). After soldering, the PCB can be used as a heatsink. In addition, through the use of thermal vias, the thermal pad can be attached directly to the appropriate copper plane shown in the electrical schematic for the device, or alternatively, can be attached to a special heatsink structure designed into the PCB. This design optimizes the heat transfer from the integrated circuit (IC).

For information on the Quad Flatpack No-Lead (QFN) package and its advantages, refer to Application Report, QFN/SON PCB Attachment, Texas Instruments Literature No. SLUA271. This document is available at [www.ti.com](http://www.ti.com).

The exposed thermal pad dimensions for this package are shown in the following illustration.

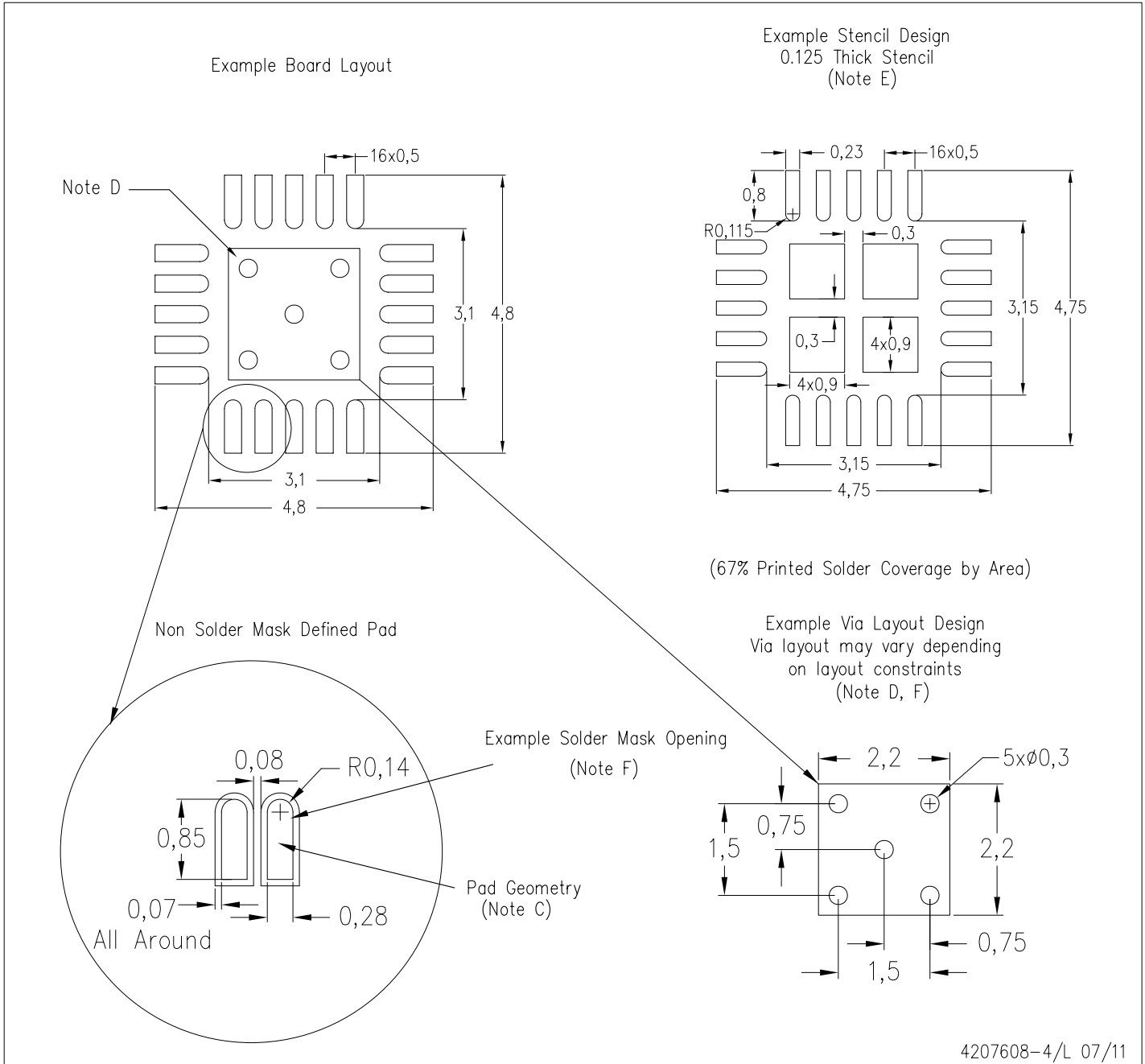


Bottom View

Exposed Thermal Pad Dimensions

4206346-4/AA 11/13

NOTES: A. All linear dimensions are in millimeters



- NOTES:
- All linear dimensions are in millimeters.
  - This drawing is subject to change without notice.
  - Publication IPC-7351 is recommended for alternate designs.
  - This package is designed to be soldered to a thermal pad on the board. Refer to Application Note, Quad Flat-Pack Packages, Texas Instruments Literature No. SLUA271, and also the Product Data Sheets for specific thermal information, via requirements, and recommended board layout. These documents are available at [www.ti.com](http://www.ti.com) <<http://www.ti.com>>.
  - Laser cutting apertures with trapezoidal walls and also rounding corners will offer better paste release. Customers should contact their board assembly site for stencil design recommendations. Refer to IPC 7525 for stencil design considerations.
  - Customers should contact their board fabrication site for recommended solder mask tolerances and via tenting recommendations for vias placed in the thermal pad.

PW0020A



# PACKAGE OUTLINE

## TSSOP - 1.2 mm max height

SMALL OUTLINE PACKAGE



4220206/A 02/2017

### NOTES:

1. All linear dimensions are in millimeters. Any dimensions in parenthesis are for reference only. Dimensioning and tolerancing per ASME Y14.5M.
2. This drawing is subject to change without notice.
3. This dimension does not include mold flash, protrusions, or gate burrs. Mold flash, protrusions, or gate burrs shall not exceed 0.15 mm per side.
4. This dimension does not include interlead flash. Interlead flash shall not exceed 0.25 mm per side.
5. Reference JEDEC registration MO-153.

# EXAMPLE BOARD LAYOUT

PW0020A

TSSOP - 1.2 mm max height

SMALL OUTLINE PACKAGE



LAND PATTERN EXAMPLE  
EXPOSED METAL SHOWN  
SCALE: 10X



SOLDER MASK DETAILS

4220206/A 02/2017

NOTES: (continued)

6. Publication IPC-7351 may have alternate designs.
7. Solder mask tolerances between and around signal pads can vary based on board fabrication site.

# EXAMPLE STENCIL DESIGN

PW0020A

TSSOP - 1.2 mm max height

SMALL OUTLINE PACKAGE



SOLDER PASTE EXAMPLE  
BASED ON 0.125 mm THICK STENCIL  
SCALE: 10X

4220206/A 02/2017

NOTES: (continued)

8. Laser cutting apertures with trapezoidal walls and rounded corners may offer better paste release. IPC-7525 may have alternate design recommendations.
9. Board assembly site may have different recommendations for stencil design.

PW (R-PDSO-G20)

PLASTIC SMALL OUTLINE



- NOTES:
- A. All linear dimensions are in millimeters.
  - B. This drawing is subject to change without notice.
  - C. Publication IPC-7351 is recommended for alternate design.
  - D. Laser cutting apertures with trapezoidal walls and also rounding corners will offer better paste release. Customers should contact their board assembly site for stencil design recommendations. Refer to IPC-7525 for other stencil recommendations.
  - E. Customers should contact their board fabrication site for solder mask tolerances between and around signal pads.



## GENERIC PACKAGE VIEW

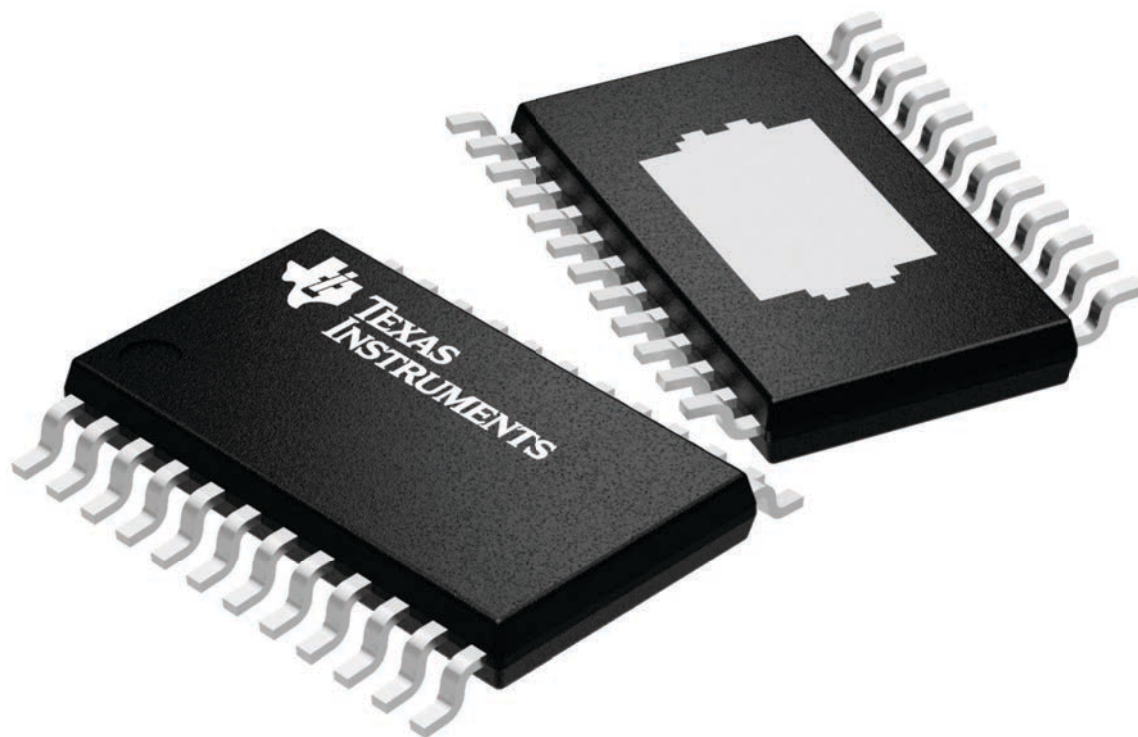
**PWP 24**

**PowerPAD™ TSSOP - 1.2 mm max height**

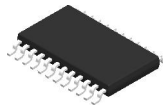
4.4 x 7.6, 0.65 mm pitch

PLASTIC SMALL OUTLINE

This image is a representation of the package family, actual package may vary.  
Refer to the product data sheet for package details.



4224742/B

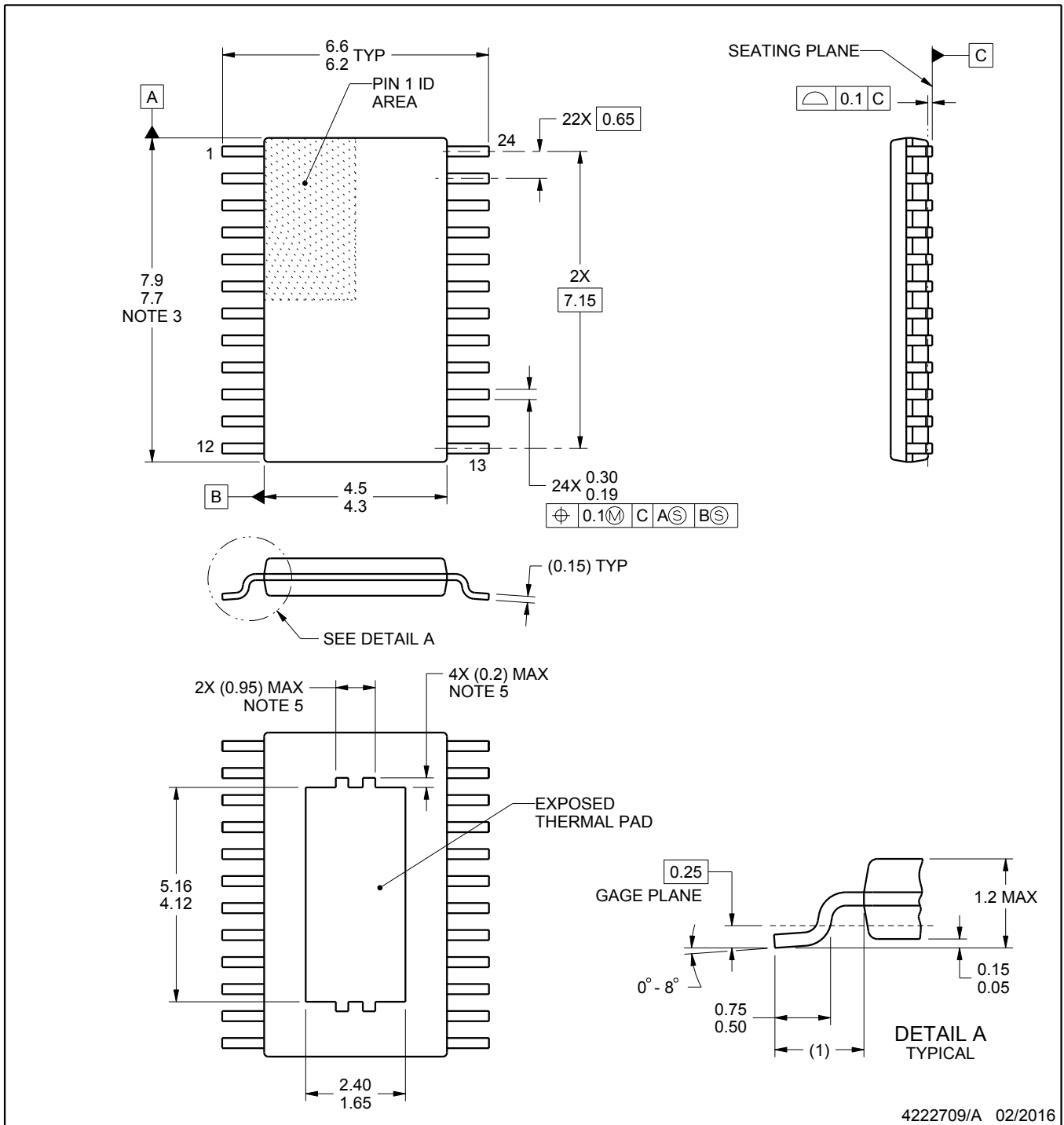


# PACKAGE OUTLINE

## PWP0024B

## PowerPAD™ TSSOP - 1.2 mm max height

PLASTIC SMALL OUTLINE



4222709/A 02/2016

### NOTES:

PowerPAD is a trademark of Texas Instruments.

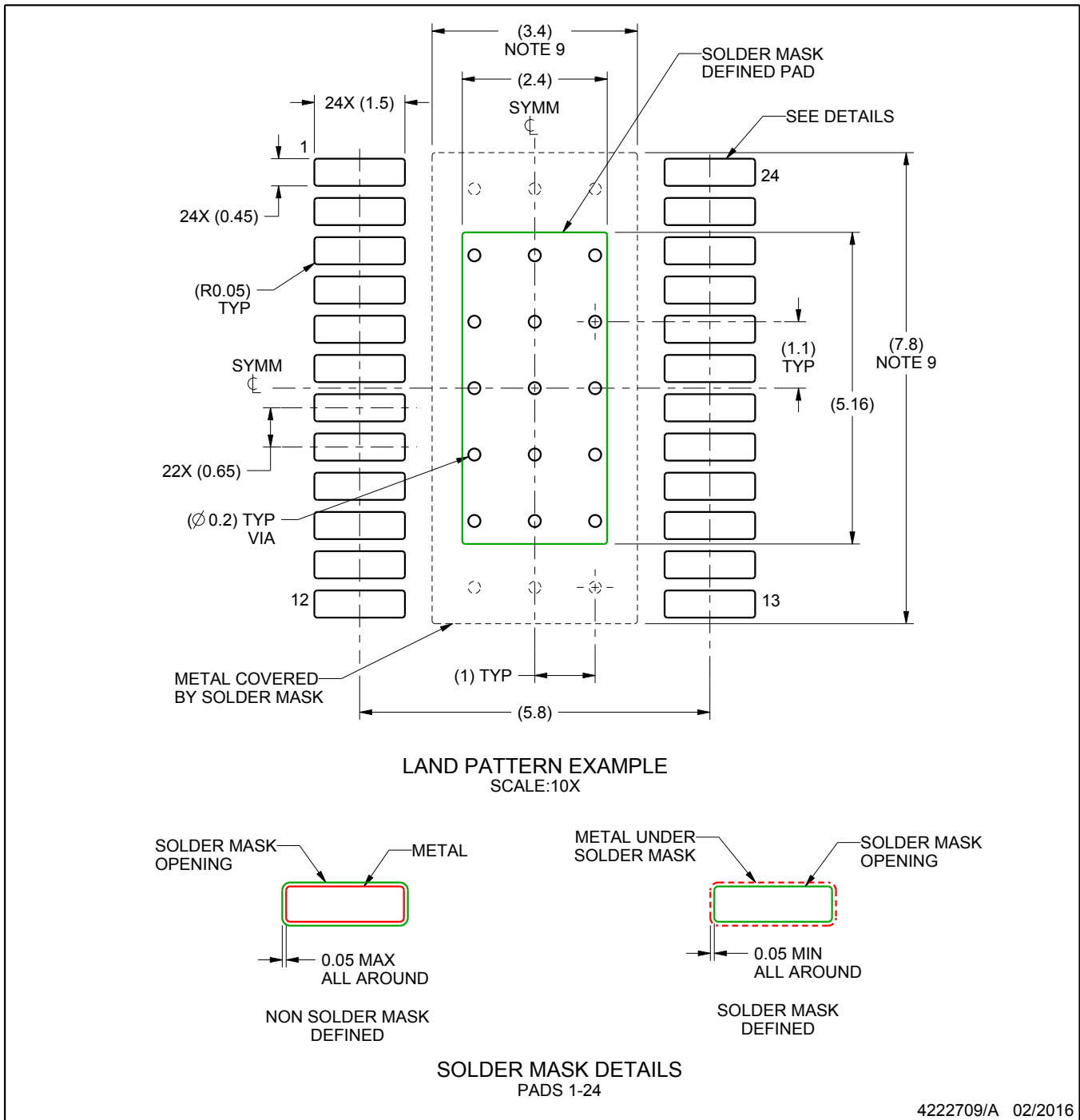
1. All linear dimensions are in millimeters. Any dimensions in parenthesis are for reference only. Dimensioning and tolerancing per ASME Y14.5M.
2. This drawing is subject to change without notice.
3. This dimension does not include mold flash, protrusions, or gate burrs. Mold flash, protrusions, or gate burrs shall not exceed 0.15 mm per side.
4. Reference JEDEC registration MO-153.
5. Features may not be present and may vary.

# EXAMPLE BOARD LAYOUT

PWP0024B

PowerPAD™ TSSOP - 1.2 mm max height

PLASTIC SMALL OUTLINE



4222709/A 02/2016

NOTES: (continued)

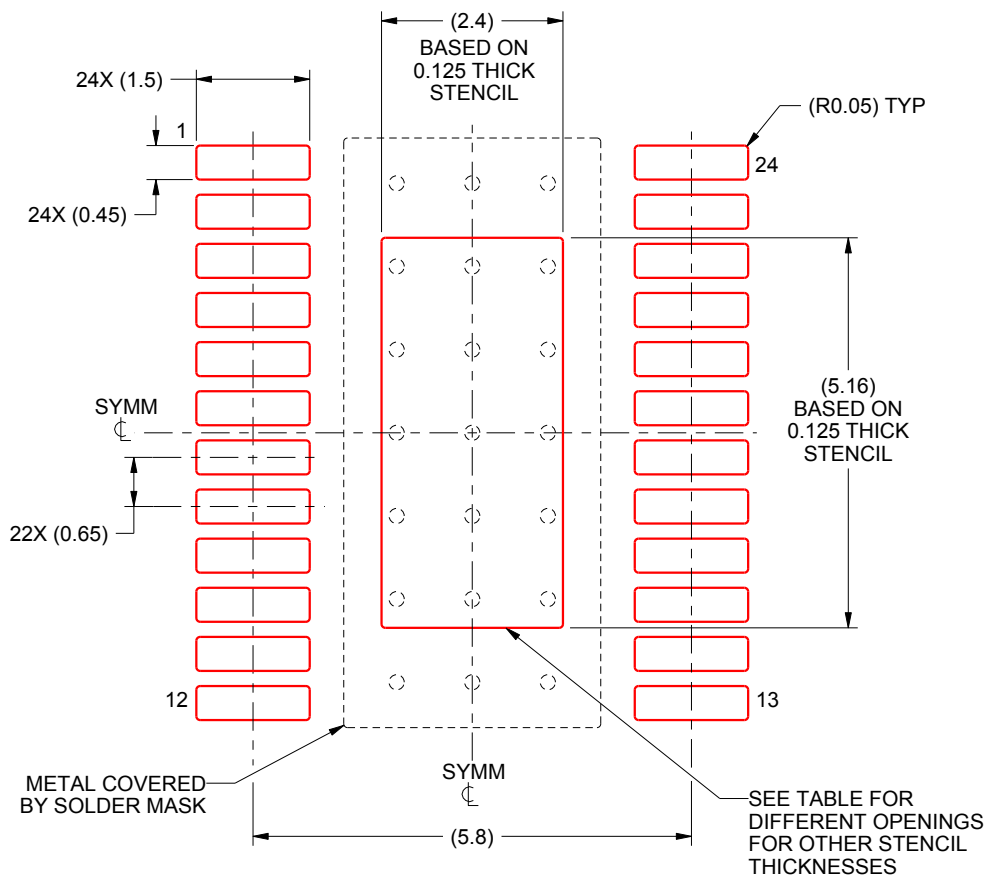
6. Publication IPC-7351 may have alternate designs.
7. Solder mask tolerances between and around signal pads can vary based on board fabrication site.
8. This package is designed to be soldered to a thermal pad on the board. For more information, see Texas Instruments literature numbers SLMA002 ([www.ti.com/lit/slma002](http://www.ti.com/lit/slma002)) and SLMA004 ([www.ti.com/lit/slma004](http://www.ti.com/lit/slma004)).
9. Size of metal pad may vary due to creepage requirement.

# EXAMPLE STENCIL DESIGN

PWP0024B

PowerPAD™ TSSOP - 1.2 mm max height

PLASTIC SMALL OUTLINE



SOLDER PASTE EXAMPLE  
 EXPOSED PAD  
 100% PRINTED SOLDER COVERAGE BY AREA  
 SCALE:10X

| STENCIL THICKNESS | SOLDER STENCIL OPENING |
|-------------------|------------------------|
| 0.1               | 2.68 X 5.77            |
| 0.125             | 2.4 X 5.16 (SHOWN)     |
| 0.15              | 2.19 X 4.71            |
| 0.175             | 2.03 X 4.36            |

4222709/A 02/2016

NOTES: (continued)

10. Laser cutting apertures with trapezoidal walls and rounded corners may offer better paste release. IPC-7525 may have alternate design recommendations.
11. Board assembly site may have different recommendations for stencil design.

## IMPORTANT NOTICE AND DISCLAIMER

TI PROVIDES TECHNICAL AND RELIABILITY DATA (INCLUDING DATA SHEETS), DESIGN RESOURCES (INCLUDING REFERENCE DESIGNS), APPLICATION OR OTHER DESIGN ADVICE, WEB TOOLS, SAFETY INFORMATION, AND OTHER RESOURCES "AS IS" AND WITH ALL FAULTS, AND DISCLAIMS ALL WARRANTIES, EXPRESS AND IMPLIED, INCLUDING WITHOUT LIMITATION ANY IMPLIED WARRANTIES OF MERCHANTABILITY, FITNESS FOR A PARTICULAR PURPOSE OR NON-INFRINGEMENT OF THIRD PARTY INTELLECTUAL PROPERTY RIGHTS.

These resources are intended for skilled developers designing with TI products. You are solely responsible for (1) selecting the appropriate TI products for your application, (2) designing, validating and testing your application, and (3) ensuring your application meets applicable standards, and any other safety, security, regulatory or other requirements.

These resources are subject to change without notice. TI grants you permission to use these resources only for development of an application that uses the TI products described in the resource. Other reproduction and display of these resources is prohibited. No license is granted to any other TI intellectual property right or to any third party intellectual property right. TI disclaims responsibility for, and you will fully indemnify TI and its representatives against, any claims, damages, costs, losses, and liabilities arising out of your use of these resources.

TI's products are provided subject to [TI's Terms of Sale](#) or other applicable terms available either on [ti.com](https://www.ti.com) or provided in conjunction with such TI products. TI's provision of these resources does not expand or otherwise alter TI's applicable warranties or warranty disclaimers for TI products.

TI objects to and rejects any additional or different terms you may have proposed.

Mailing Address: Texas Instruments, Post Office Box 655303, Dallas, Texas 75265  
Copyright © 2023, Texas Instruments Incorporated