

ONET2804T 28Gbps、4チャンネル制限付きTIA

1 特長

- 4チャンネルで最高28Gbpsのマルチレート動作
- 10kΩの差動トランスインピーダンス
- 21GHzの帯域幅
- 入力換算ノイズ: 1.8μA_{rms}
- 入力過負荷電流: 2.9mA_{PP}
- 出力電圧をプログラム可能
- ゲインおよび帯域幅を変更可能
- 各チャンネルについての受信信号強度インジケータ (RSSI)
- チャンネル間の絶縁(ダイのみ): 40dB
- 3.3V単一電源
- チャンネルごとに139mW
- パッド制御または2線式制御
- オンチップのフィルタ・コンデンサ
- -40°C~100°Cで動作
- ダイ・サイズ: 3250μm×1450μm、チャンネル・ピッチ 750μm

2 アプリケーション

- 100ギガビット・イーサネットの光レシーバ
- ITU OTL4.4
- 内部リタイミング付きのCFP2、CFP4、QSFP28

3 概要

ONET2804Tは、並列光学相互接続用の高ゲインの制限付きトランスインピーダンス・アンプで、データ・レートは最高28Gbpsです。このデバイスは、750μmピッチのフォトダイオード・アレイと組み合わせて、光信号を差動出力電圧へ変換するために使用されます。内部回路によってフォトダイオードの逆バイアス電圧を供給し、各フォトダイオードに供給される平均光電流を検出します。

このデバイスは、ピン制御または2線式シリアル・インターフェイスで使用でき、出力振幅、ゲイン、帯域幅、入力スレッショルドを制御できます。

ONET2804Tは、チャンネルごとに21GHzの帯域幅、10kΩのゲイン、1.8μA_{rms}の入力換算ノイズ、および各チャンネルの受信信号強度インジケータ(RSSI)を提供します。40dBのチャンネル間絶縁により、レシーバでのクロストーク・ペナルティが低くなります。

この部品には単一の3.3V電源が必要で、500mV_{pp}の差動出力振幅で通常はチャンネルごとに139mWを消費します。-40°C~+100°Cで動作が規定されており、チャンネル・ピッチ750μmのダイ形式で供給されます。

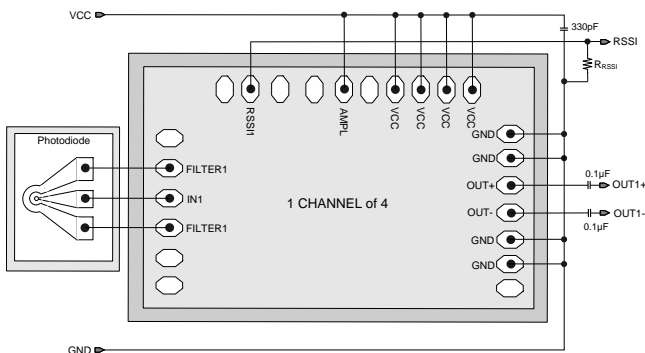
完全なデータシートは、onet2804t_request@ti.comに電子メールでご請求ください。

製品情報(1)

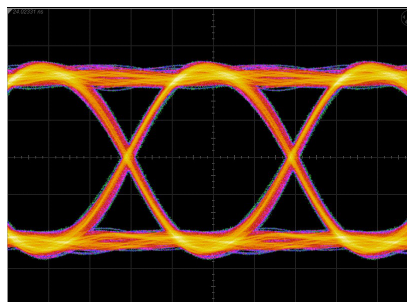
型番	パッケージ	本体サイズ(公称)
ONET2804T	ワッフル・バックのベース・ダイ	3250μm×1450μm

(1) 利用可能なすべてのパッケージについては、このデータシートの末尾にある注文情報を参照してください。

概略回路図



アイ・ダイアグラム



目次

1	特長	1	7.4	Device Functional Modes	13
2	アプリケーション	1	7.5	Register Maps	16
3	概要	1	8	Application and Implementation	24
4	改訂履歴	2	8.1	Application Information	24
5	Pin Configuration and Functions	4	8.2	Typical Applications	24
6	Specifications	6	9	Power Supply Recommendations	27
6.1	Absolute Maximum Ratings	6	10	Layout	28
6.2	ESD Ratings	6	10.1	Layout Guidelines	28
6.3	Recommended Operating Conditions	6	10.2	Layout Example	28
6.4	DC Electrical Characteristics	7	11	デバイスおよびドキュメントのサポート	31
6.5	AC Electrical Characteristics	7	11.1	ドキュメントの更新通知を受け取る方法	31
6.6	Typical Characteristics	8	11.2	コミュニティ・リソース	31
7	Detailed Description	11	11.3	商標	31
7.1	Overview	11	11.4	静電気放電に関する注意事項	31
7.2	Functional Block Diagram	11	11.5	Glossary	31
7.3	Feature Description	12	12	メカニカル、パッケージ、および注文情報	31

4 改訂履歴

Revision A (April 2015) から Revision B に変更

Page

•	データシートの最初の一般リリース	1
•	追加「ドキュメントの更新通知を受け取る方法」および「コミュニティ・リソース」セクション	31

2014年7月発行のものから更新

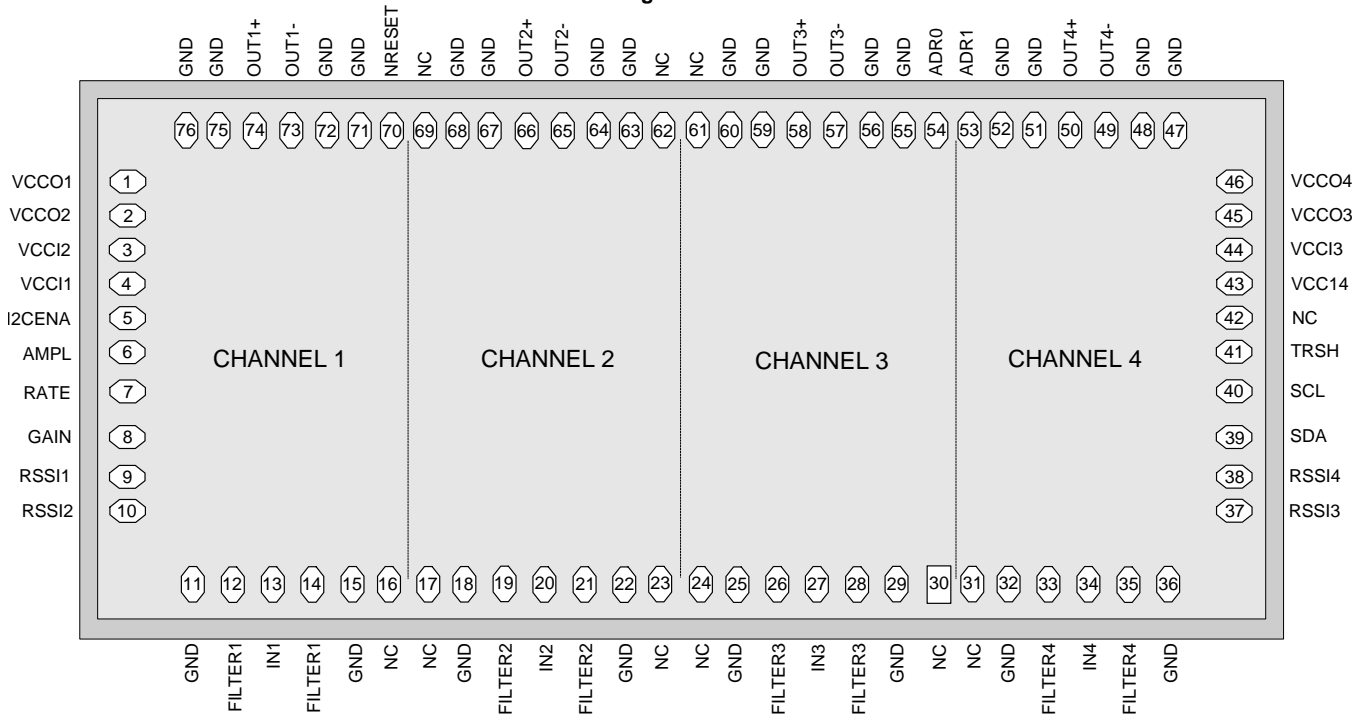
Page

•	「概要」のテキストを「450mV _{PP} の差動出力振幅」から「500mV _{PP} の差動出力振幅」に変更	1
•	Changed PAD 6, AMPL Description From: "VCC: 450 mVpp differential output swing To: "VCC: 500 mVpp differential output swing" in <i>Bond Pad Functions</i>	4
•	Changed From: <i>Handling Ratings</i> To: <i>ESD Ratings</i>	6
•	Changed the Average Input current MAX value in the <i>Recommended Operating Conditions</i> From: 3 mA to: 2.7 mA	6
•	Changed From: V _{OD} = 450 mV _{PP} To: V _{OD} = 500 mV _{PP} in the <i>DC Electrical Characteristics</i> condition statement	7
•	Changed From: V _{OD} = 450 mV _{PP} To: V _{OD} = 500 mV _{PP} in the <i>AC Electrical Characteristics</i> condition statement	7
•	Changed V _{OD} test conditions in the <i>AC Electrical Characteristics</i> From: 450 mV _{PP} To: V _{OD} = 500 mV _{PP}	7
•	Changed V _{OD} values in the <i>AC Electrical Characteristics</i> , TYP From: 450 To: 500, MAX From: 650 To: 700 mV _{PP}	7
•	Changed From: V _{OD} = 450 mV _{PP} To: V _{OD} = 500 mV _{PP} in the <i>Typical Characteristics</i> condition statement	8
•	Changed text in <i>Amplitude Adjustment</i> From: "450 mVpp if the pad is tied to VCC" To: "500 mVpp if the pad is tied to VCC"	12
•	Changed From: [reset = 9h] To: [reset = 0h] in <i>Register 1 (0x01) – Amplitude and Rate for Channel 1 (offset = 1h) [reset = 0h]</i>	17
•	Changed Table 3 , Reset value 9h To: 0h. Moved (default) From 10010 To: 0000	17
•	Changed From: [reset = 9h] To: [reset = 0h] in <i>Register 7 (0x07) – Amplitude and Rate for Channel 2 (offset = 7h) [reset = 0h]</i>	18
•	Changed Table 9 , Reset value 9h To: 0h. Moved (default) From 10010 To: 0000	18
•	Changed From: [reset = 9h] To: [reset = 0h] in <i>Register 13 (0x0D) – Amplitude and Rate for Channel 3 (offset = Dh) [reset = 0h]</i>	20
•	Changed Table 15 , Moved (default) From 10010 To: 0000	20
•	Changed From: [reset = 9h] To: [reset = 0h] in <i>Register 19 (0x13) – Amplitude and Rate for Channel 4 (offset = 13h) [reset = 0h]</i>	22
•	Changed Table 21 , Moved (default) From 10010 To: 0000	22

-
- Changed the Output voltage From: 450 mV_{PP} to: 500 mV_{PP} in [Table 28](#) 24
 - Changed text in [Detailed Design Procedure](#) From: "450 mV_{PP} level by bonding AMPL" To: "500 mV_{PP} level by bonding AMPL" 25
-

5 Pin Configuration and Functions

Bond Pad Assignment of ONET2804T



Bond Pad Functions

PAD	SYMBOL	TYPE	DESCRIPTION
6	AMPL	Digital input	3-state input for amplitude control of all 4 channels. VCC: 500 mVpp differential output swing Open: 300 mVpp differential output swing (default) GND: 250 mVpp differential output swing.
53	ADR1	Digital input	2-wire interface address programming pin. Leave this pad open for a default address of 0001100. Grounding this pad changes the 2 nd address bit to a 1 (0001110).
54	ADR0	Digital input	2-wire interface address programming pin. Leave this pad open for a default address of 0001100. Grounding this pad changes the 1 st address bit to a 1 (0001101).
12, 14, 19, 21, 26, 28, 33, 35	FILTERx	Analog output	Bias voltage for photodiode cathode. These pads are biased to VCC - 100 mV.
8	GAIN	Digital input	3-state input for gain control of all 4 channels. VCC: Minimum transimpedance Open: Default transimpedance GND: Medium transimpedance
11, 15, 18, 22, 25, 29, 32, 36, 47, 48, 51, 52, 55, 56, 59, 60, 63, 64, 67, 68, 71, 72, 75, 76	GND	Supply	Circuit ground. All GND pads are connected on die. Bonding all pads is recommended, except for 11, 15, 18, 22, 25, 29, 32, and 36.
5	I2CENA	Digital input	2-wire control option. Leave the pad unconnected for pad control of the IC. Two-wire control can be enabled by applying a high signal to the pad.
13, 20, 27, 34	INx	Analog input	Data input to TIAx (connect to photodiode anode).
16, 17, 23, 24, 30, 31, 42, 61, 62, 69	NC	No Connect	Do not connect
70	NRESET	Digital input	Used to reset the 2-wire state machine and registers. Leave open for normal operation and set low to reset the 2-wire interface.
49, 57, 65, 73	OUTx-	Analog output	Inverted CML data output for channel x. On-chip 50 Ω back-terminated to VCC.

Bond Pad Functions (continued)

PAD	SYMBOL	TYPE	DESCRIPTION
50, 58, 66, 74	OUTx+	Analog output	Non-inverted CML data output for channel x. On-chip 50 Ω back-terminated to V_{CC} .
7	RATE	Digital input	3-state input for bandwidth control of all 4 channels. VCC: Increase the bandwidth Open: 21 GHz bandwidth (default) GND: reduce the bandwidth
9, 10, 37, 38	RSSIx	Analog output	Indicates the strength of the received signal (RSSI) for channel x if the photo diode is biased from FILTERx. The analog output current is proportional to the input data amplitude. Connect to an external resistor to ground (GND). For proper operation, ensure that the voltage at the RSSI pad does not exceed $V_{CC} - 0.65$ V. If the RSSI feature is not used these pads should be left open.
40	SCL	Digital input	2-wire interface serial clock input. Includes a 10 k Ω pull-up resistor to V_{CC} .
39	SDA	Digital –in/out	2-wire interface serial data input. Includes a 10 k Ω pull-up resistor to V_{CC} .
41	TRSH	Digital input	3-state input for threshold control. VCC: Crossing point shifted down Open: No threshold adjustment (default) GND: Crossing point shifted up
1, 2, 45, 46	VCCOx	Supply	2.97 V – 3.47 V supply voltage for AGCx and CMLx amplifiers.
3, 4, 43, 44	VCCIx	Supply	2.97 V – 3.47 V supply voltage for input TIAx stage.

6 Specifications

6.1 Absolute Maximum Ratings

over operating free-air temperature range (unless otherwise noted)⁽¹⁾

		MIN	MAX	UNIT
Supply voltage ⁽¹⁾	VCC1x, VCC0x	-0.3	4	V
Voltage ⁽¹⁾	FILTERx, OUTx+, OUTx-, RSS1x, SCL, SDA, I2CENA, AMPL, RATE, GAIN, TRSH, ADR1, ADR0 and NRESET	-0.3	4	V
Average Input current	INx	-0.7	5	mA
	FILTERx	-8	8	mA
Continuous current at outputs	OUTx+, OUTx-	-8	8	mA
Maximum junction temperature, T _J			125	°C
Storage temperature, T _{stg}		-65	150	°C

(1) All voltage values are with respect to network ground terminal.

6.2 ESD Ratings

			VALUE	UNIT
V _(ESD)	Electrostatic discharge	Human body model (HBM), per ANSI/ESDA/JEDEC JS-001 ⁽¹⁾	All pins except input INx	±1000
			Pin INx	±500

(1) JEDEC document JEP155 states that 500-V HBM allows safe manufacturing with a standard ESD control process.

6.3 Recommended Operating Conditions

over operating free-air temperature range (unless otherwise noted)

		MIN	TYP	MAX	UNIT
V _{CC}	Supply voltage	2.97	3.3	3.47	V
I _(INx)	Average Input current			2.7	mA
T _A	Operating backside die temperature	-40		100	°C
L _(FILTER) , L _(IN)	Wire-bond inductance at pins FILTERx and INx		0.3		nH
C _(PD)	Photodiode Capacitance		0.1		pF
V _{IH}	Digital input high voltage	2			V
V _{IL}	Digital input low voltage			0.8	V
	3-state input high voltage	V _{CC} - 0.4			V
	3-state input low voltage			0.4	V

6.4 DC Electrical Characteristics

Over recommended operating conditions with $V_{OD} = 500 \text{ mV}_{PP}$ unless otherwise noted. Typical values are at $V_{CC} = 3.3 \text{ V}$ and $T_A = 25^\circ\text{C}$

PARAMETER		TEST CONDITIONS	MIN	TYP	MAX	UNIT
V_{CC}	Supply voltage		2.97	3.3	3.47	V
I_{CC}	Supply current	Per channel, $30 \mu\text{A}_{PP}$ input, maximum 85°C		42	$57^{(1)}$	mA
		Per channel, $30 \mu\text{A}_{PP}$ input, maximum 100°C			$60^{(1)}$	
$P_{(RX)}$	Receiver power dissipation	Per channel, $30 \mu\text{A}_{PP}$ input, maximum 85°C		139	198	mW
		Per channel, $30 \mu\text{A}_{PP}$ input, maximum 100°C			208	
V_{IN}	Input bias voltage		0.75	0.85	0.98	V
R_{OUT}	Output resistance	Single-ended to V_{CC}	40	50	60	Ω
$V_{(FILTER)}$	Photodiode bias voltage ⁽²⁾		2.8	3.2		V
$A_{(RSSI_IB)}$	RSSI gain	Resistive load to GND ⁽³⁾	0.49	0.5	0.54	A/A
	RSSI output offset current (no light)		0		2.5	μA

(1) Including RSSI current

(2) Regulated voltage typically 100mV lower than V_{CC} .

(3) The RSSI output is a current output, which requires a resistive load to ground (GND). The voltage gain can be adjusted for the intended application by choosing the external resistor; however, for proper operation, ensure that the voltage at RSSI does not exceed $V_{CC}-0.65\text{V}$.

6.5 AC Electrical Characteristics

Over recommended operating conditions with $V_{OD} = 500 \text{ mV}_{PP}$ unless otherwise noted. Typical values are at $V_{CC} = 3.3 \text{ V}$ and $T_A = 25^\circ\text{C}$

PARAMETER		TEST CONDITIONS	MIN	TYP	MAX	UNIT
Z_{21}	Small signal transimpedance	$25 \mu\text{A}_{PP}$ input signal	7	10		$\text{k}\Omega$
$f_{(3dB-H)}$	-3dB bandwidth	$25 \mu\text{A}_{PP}$ input signal ⁽¹⁾	18.5	21		GHz
$f_{(3dB-L)}$	Low frequency -3dB bandwidth			30	100	kHz
$i_{N(IN)}$	Input referred RMS noise	CPD = 0.1 pF, 28 GHz BT4 filter ⁽²⁾		1.8	2.5	μA
DJ	Deterministic jitter	$35 \mu\text{A}_{PP} < i_{IN} < 250 \mu\text{A}_{PP}$ (27.95 Gbps, PRBS9 pattern)		2		ps_{pp}
		$250 \mu\text{A}_{PP} < i_{IN} < 500 \mu\text{A}_{PP}$ (27.95 Gbps, PRBS9 pattern)		2		
		$500 \mu\text{A}_{PP} < i_{IN} < 2900 \mu\text{A}_{PP}$ (27.95 Gbps, PRBS9 pattern)		4		
V_{OD}	Differential output voltage	500 mV_{PP} setting	250	500	700	mV_{PP}
	Crosstalk	Between adjacent channels, up to 20 GHz ⁽³⁾		-40		dB
	RSSI response time			1		μs
PSRR	Power supply rejection ratio	$F < 10 \text{ MHz}^{(4)}$		-15		dB

(1) The small signal bandwidth is specified over process corners, temperature, and supply voltage variation. The assumed photodiode capacitance is 0.1pF and the bond-wire inductance is 0.3nH. The small signal bandwidth strongly depends on environmental parasitics. Careful attention to layout parasitics and external components is necessary to achieve optimal performance.

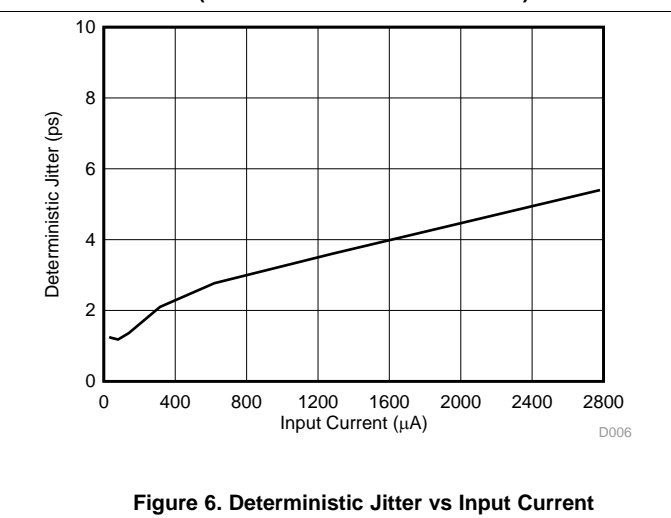
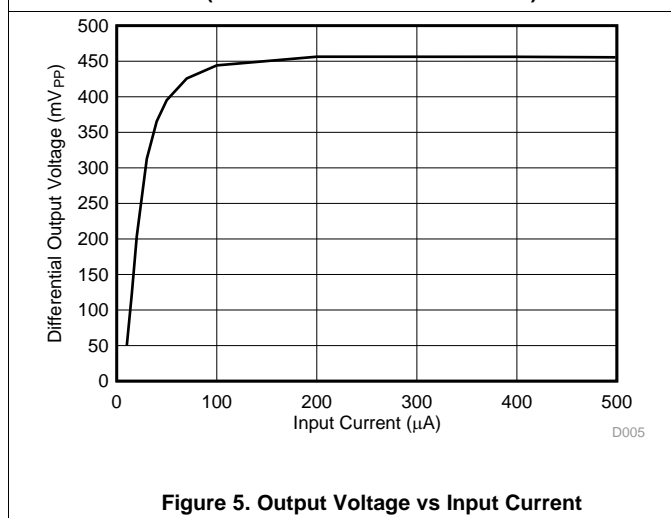
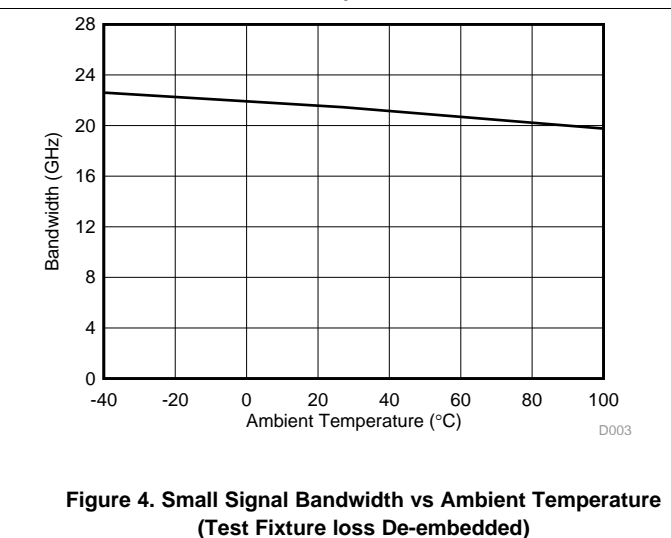
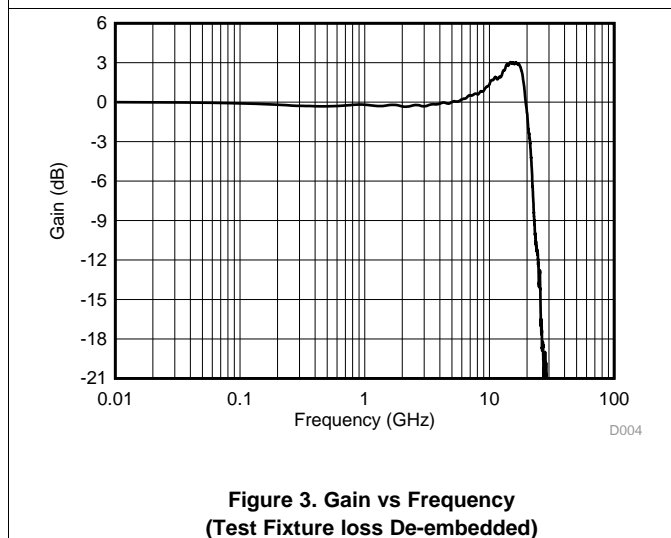
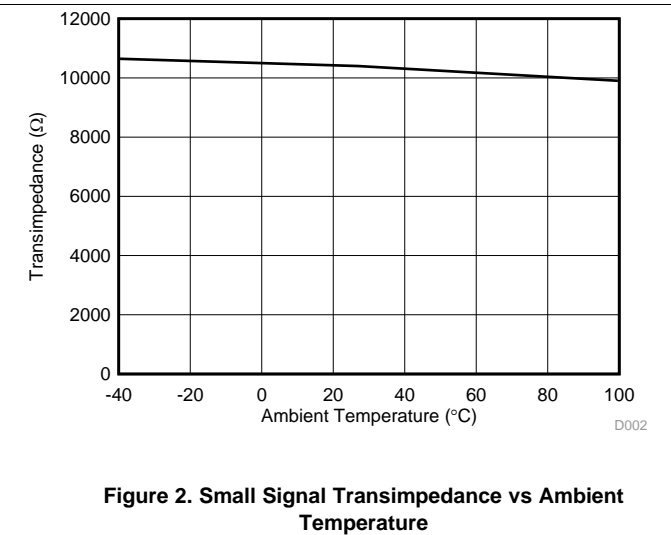
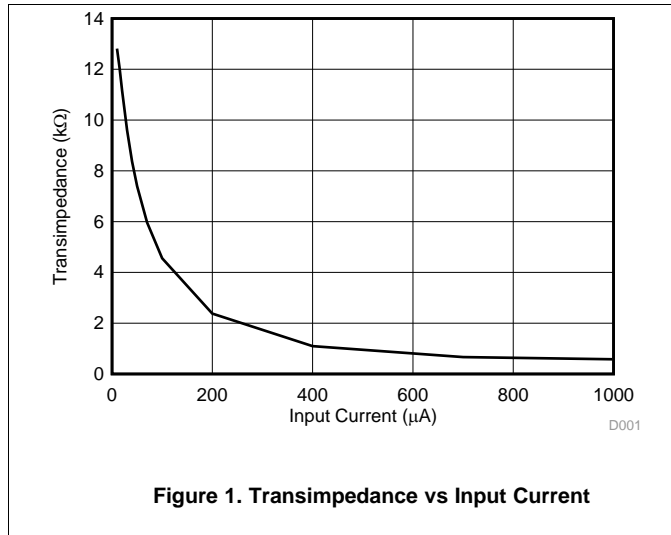
(2) Input referred RMS noise is (RMS output noise)/(gain at 100 MHz).

(3) Die only, no wire bonds

(4) PSRR is the differential output amplitude divided by the voltage ripple on the supply. No input current at IN.

6.6 Typical Characteristics

Typical operating condition is at $V_{CC} = 3.3\text{ V}$, $T_A = 25^\circ\text{C}$ and $V_{OD} = 500\text{ mVpp}$ (unless otherwise noted).



Typical Characteristics (continued)

Typical operating condition is at $V_{CC} = 3.3\text{ V}$, $T_A = 25^\circ\text{C}$ and $V_{OD} = 500\text{ mVpp}$ (unless otherwise noted).

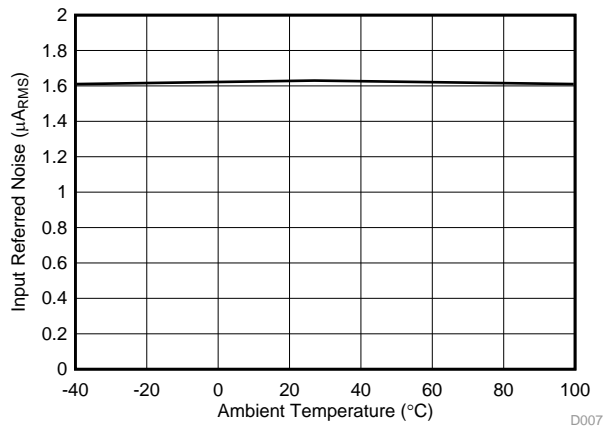


Figure 7. Input Referred Noise vs Temperature

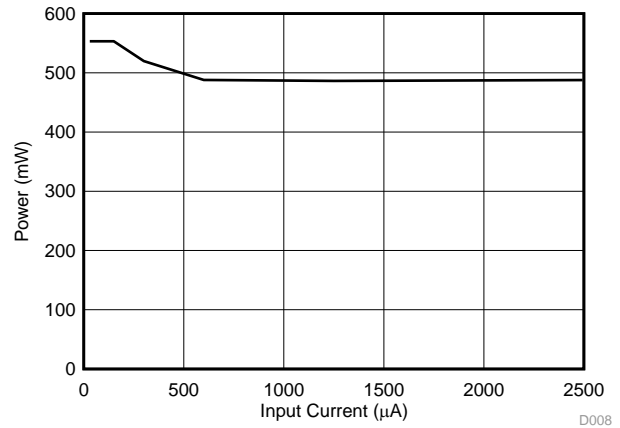


Figure 8. Power vs Input Current

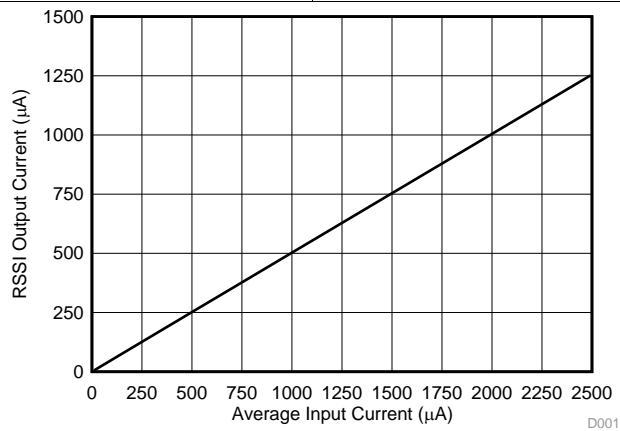
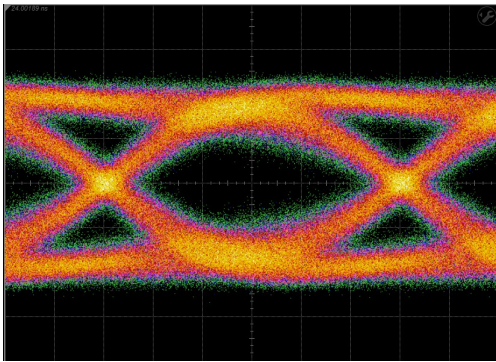


Figure 9. RSSI Output Current vs Average Input Current

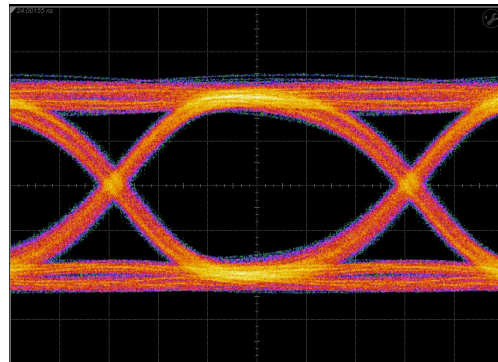
Typical Characteristics (continued)

Typical operating condition is at $V_{CC} = 3.3\text{ V}$, $T_A = 25^\circ\text{C}$ and $V_{OD} = 500\text{ mVpp}$ (unless otherwise noted).



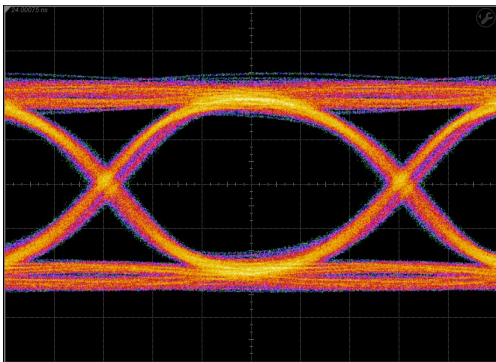
27.95 GBPS

Figure 10. Output Eye-Diagram, 30 μA_{p-p} Input Current



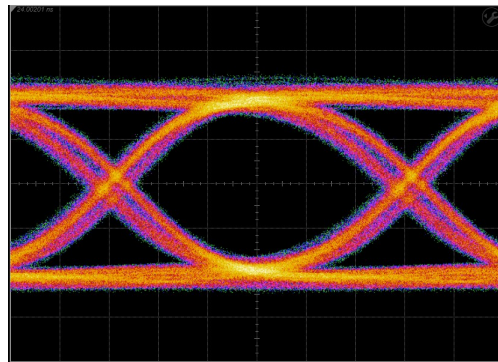
27.95 GBPS

Figure 11. Output Eye-Diagram, 500 μA_{p-p} Input Current



27.95 GBPS

Figure 12. Output Eye-Diagram, 1.5 mA_{p-p} Input Current



27.95 GBPS

Figure 13. Output Eye-Diagram, 2.5 mA_{p-p} Input Current

7 Detailed Description

7.1 Overview

A simplified block diagram of one channel of the ONET2804T is shown in [Functional Block Diagram](#).

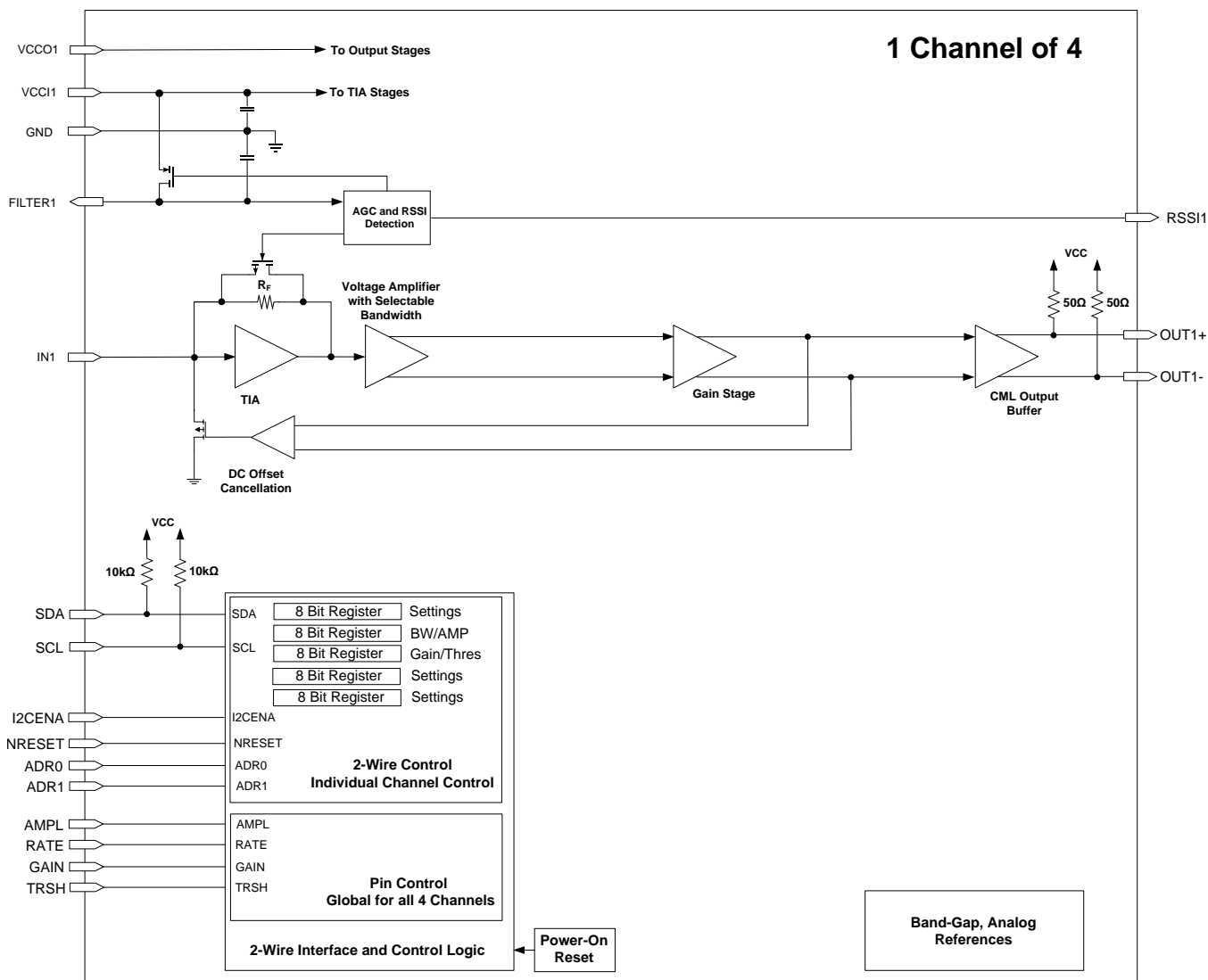
The ONET2804T consists of the signal path, supply filters, a control block for DC input bias, automatic gain control (AGC) and received signal strength indication (RSSI), an analog reference block and a 2-wire serial interface and control logic block.

The signal path consists of a transimpedance amplifier stage, a voltage amplifier, and a CML output buffer. The on-chip filter circuit provides a filtered V_{CC} for the PIN photodiode and for the transimpedance amplifier. The RSSI provides the bias for the TIA stage and the control for the AGC.

The DC input bias circuit and automatic gain control use internal low pass filters to cancel the DC current on the input and to adjust the transimpedance amplifier gain. Furthermore, circuitry is provided to monitor the received signal strength.

The output amplitude, gain, bandwidth and input threshold can be globally controlled through pin settings or each channel can be individually controlled through the 2-wire interface.

7.2 Functional Block Diagram



7.3 Feature Description

7.3.1 Signal Path

The first stage of the signal path is a transimpedance amplifier which converts the photodiode current into a voltage. If the input signal current exceeds a certain value, the transimpedance gain is reduced by means of a nonlinear AGC circuit to limit the signal amplitude.

The second stage is a limiting voltage amplifier that provides additional limiting gain and converts the single ended input voltage into a differential data signal. The output stage provides CML outputs with an on-chip 50 Ω back-termination to V_{CC} .

The TIA has adjustable gain, amplitude, bandwidth and input threshold and they can be globally controlled through pad settings or each channel can be individually controlled through the 2-wire interface. The default mode of operation is pad control where the state (OPEN, HI or LO) of the AMPL, BW, GAIN and TRSH pads sets the respective parameter. To enable 2-wire control, the I2CENA pad should be set HIGH and the functionality of each channel can be controlled individually through the 2-wire interface.

7.3.2 Gain Adjustment

The gain of all TIAs can be adjusted using the GAIN pad (pad 8) in pad control mode. The gain is set to default if the pad is left open. The gain is reduced approximately 4 dB if the pad is tied to ground, and reduced approximately 8 dB if the pad is tied to VCC. In 2-wire control mode, the gain of each channel can be adjusted from minimum to default. The gain is controlled with the GAIN[0..1] bits in registers 2, 8, 14 and 20 respectively for channels 1, 2, 3 and 4.

7.3.3 Amplitude Adjustment

The output amplifier of all buffers can be adjusted using the AMPL pad (pad 6) in pad control mode. The amplitude is set to 300 mVpp differential if the pad is left open, 250 mVpp if the pad is tied to ground and 500 mVpp if the pad is tied to VCC (recommended mode of operation). In 2-wire control mode, the amplitude of each channel can be adjusted from 0mVpp to 600 mVpp. The amplitude is controlled with the AMPL[0..3] bits in registers 1, 7, 13 and 19 respectively for channels 1, 2, 3 and 4.

7.3.4 Rate Select

The small signal bandwidth can be adjusted using the RATE pad (pad 7) in pad control mode. The bandwidth is typically 21 GHz if the pad is left open. The bandwidth is reduced approximately 0.4 GHz if the pad is tied to ground, and increased by approximately 0.4 GHz if the pad is tied to VCC. In 2-wire control mode, the bandwidth of each channel can be adjusted up or down using the register settings RATE[0..3] in registers 1, 7, 13 and 19 respectively for channels 1, 2, 3 and 4.

7.3.5 Threshold Adjustment

The TIAs have DC offset cancellation to maintain a 50% crossing point; however, the crossing point can be adjusted using the TRSH pad (pad 41) in pad control mode. No threshold adjustment is applied if the pad is left open. The crossing point is shifted up approximately 12% if the pad is tied to ground, and it is shifted down approximately 12% if the pad is tied to VCC. In 2-wire control mode, the crossing point can be adjusted up or down using register settings TH[0..3] in registers 2, 8, 14 and 20 for channels 1, 2, 3 and 4.

7.3.6 Filter Circuitry

The FILTER pins provide a regulated and filtered VCC for a PIN photodiode bias. The supply voltages for the transimpedance amplifier have on-chip capacitors but it is recommended to use external filter capacitors as well for best performance. The input stage has a separate VCC supply (VCCI) which is not connected on chip to the supply of the limiting and CML stages (VCCO).

7.3.7 AGC and RSSI

The voltage drop across the regulated photodiode FET is monitored by the bias and RSSI control circuit block in the case where a PIN diode is biased using the FILTER pins.

If the DC input current exceeds a certain level then it is partially cancelled by means of a controlled current source. This keeps the transimpedance amplifier stage within sufficient operating limits for optimum performance.

Feature Description (continued)

The automatic gain control circuitry adjusts the voltage gain of the AGC amplifier to ensure limiting behavior of the complete amplifier.

Finally this circuit block senses the current through the FILTER FET and generates a mirrored current that is proportional to the input signal strength. The mirrored currents are available at the RSSI outputs and can be sunk to ground (GND) using an external resistor. For proper operation, ensure that the voltage at the RSSI pad does not exceed $VCC - 0.65\text{ V}$.

7.4 Device Functional Modes

The device has two functional modes of operation: pad control mode and 2-wire interface control mode.

7.4.1 Pad Control

The default mode of operation is pad control and it is recommended that the amplitude be increased to the 500 mVpp setting by bonding AMPL (pad 6) to VCC. If further adjustment is desired as described above, then the control pads RATE (pad 7), GAIN (pad 8) and TRSH (pad 41) and can be bonded to either ground or VCC.

7.4.2 2-Wire Interface Control

To enable 2-wire interface control I2CENA (pad 5) must be bonded to VCC. In this mode of operation pad control is not functional and all control is initiated through the 2-wire interface as described in the [2-Wire Interface and Control Logic](#) section.

7.4.3 2-Wire Interface and Control Logic

The ONET2804T uses a 2-wire serial interface for digital control. For example, the two circuit inputs, SDA and SCK, are driven by the serial data and serial clock from a microcontroller. Both inputs include 10 k Ω pull-up resistors to VCC. For driving these inputs, an open drain output is recommended. The 2-wire interface allows write access to the internal memory map to modify control registers and read access to read out control and status signals. The ONET2804T is a slave device only which means that it cannot initiate a transmission itself; it always relies on the availability of the SCK signal for the duration of the transmission. The master device provides the clock signal as well as the START and STOP commands. It is recommended that the device be used on a bus with only one master. The protocol for a data transmission is as follows:

1. START command
2. 7 bit slave address (0001100) followed by an eighth bit which is the data direction bit (R/W). A zero indicates a WRITE and a 1 indicates a READ.
3. 8 bit register address
4. 8 bit register data word
5. STOP command

Regarding timing, the ONET2804T is I²C compatible. The typical timing is shown in [Figure 14](#) and a complete data transfer is shown in [Figure 15](#). Parameters for [Figure 14](#) are defined in [Table 1](#).

7.4.4 Bus Idle

Both SDA and SCK lines remain HIGH

7.4.5 Start Data Transfer

A change in the state of the SDA line, from HIGH to LOW, while the SCK line is HIGH, defines a START condition (S). Each data transfer is initiated with a START condition.

7.4.6 Stop Data Transfer

A change in the state of the SDA line from LOW to HIGH while the SCK line is HIGH defines a STOP condition (P). Each data transfer is terminated with a STOP condition; however, if the master still wishes to communicate on the bus, it can generate a repeated START condition and address another slave without first generating a STOP condition.

Device Functional Modes (continued)

7.4.7 Data Transfer

Only one data byte can be transferred between a START and a STOP condition. The receiver acknowledges the transfer of data.

7.4.8 Acknowledge

Each receiving device, when addressed, is obliged to generate an acknowledge bit. The transmitter releases the SDA line and a device that acknowledges must pull down the SDA line during the acknowledge clock pulse in such a way that the SDA line is stable LOW during the HIGH period of the acknowledge clock pulse. Setup and hold times must be taken into account. When a slave-receiver does not acknowledge the slave address, the data line must be left HIGH by the slave. The master can then generate a STOP condition to abort the transfer. If the slave-receiver does acknowledge the slave address but some time later in the transfer cannot receive any more data bytes, the master must abort the transfer. This is indicated by the slave generating the not acknowledge on the first byte to follow. The slave leaves the data line HIGH and the master generates the STOP condition.

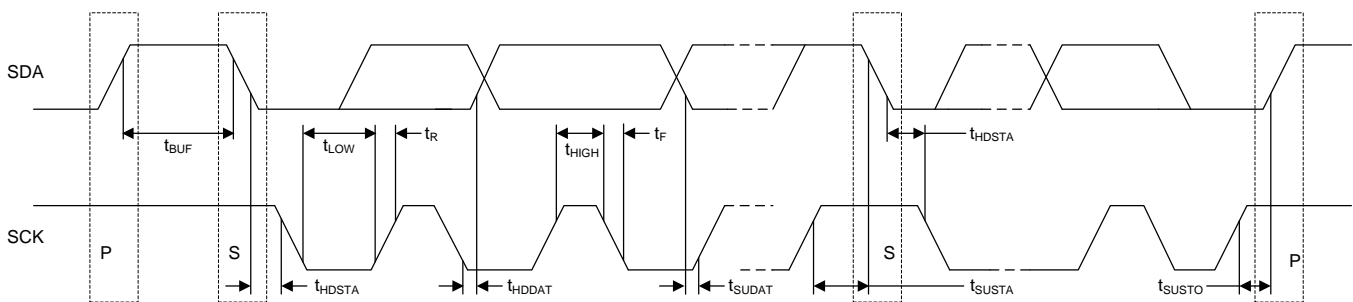
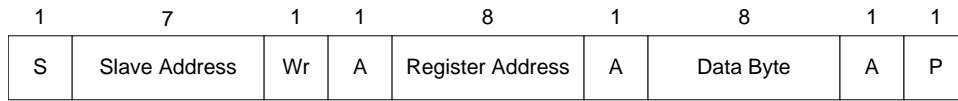


Figure 14. I²C Timing Diagram

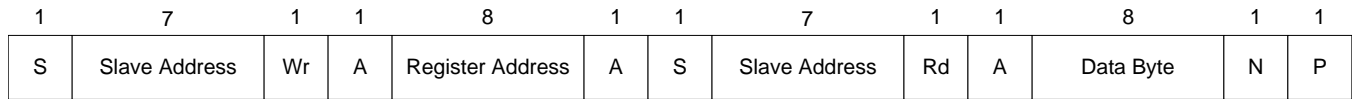
Table 1. Timing Diagram Definitions

		MIN	MAX	UNIT
f_{SCK}	SCK clock frequency		400	kHz
t_{BUF}	Bus free time between START and STOP conditions	1.3		μ s
t_{HDSTA}	Hold time after repeated START condition. After this period, the first clock pulse is generated	0.6		μ s
t_{LOW}	Low period of the SCK clock	1.3		μ s
t_{HIGH}	High period of the SCK clock	0.6		μ s
t_{SUSTA}	Setup time for a repeated START condition	0.6		μ s
t_{HDDAT}	Data HOLD time	0		μ s
t_{SUDAT}	Data setup time	100		ns
t_R	Rise time of both SDA and SCK signals		300	ns
t_F	Fall time of both SDA and SCK signals		300	ns
t_{SUSTO}	Setup time for STOP condition	0.6		μ s

Write Sequence



Read Sequence



Legend

- | |
|---|
| S |
|---|

 Start Condition
- | |
|----|
| Wr |
|----|

 Write Bit (bit value = 0)
- | |
|----|
| Rd |
|----|

 Read Bit (bit value = 1)
- | |
|---|
| A |
|---|

 Acknowledge
- | |
|---|
| N |
|---|

 Not Acknowledge
- | |
|---|
| P |
|---|

 Stop Condition

Figure 15. Data Transfer

7.5 Register Maps

The register mapping for register addresses 0 (0x00) through 15 (0x0F) are shown in [Table 2](#) through [Table 27](#). [Figure 16](#) through [Figure 41](#) describes the circuit functionality based on the register settings.

7.5.1 Register 0 (0x00) – Control Settings (offset = 0h) [reset = 0h]

Figure 16. Register 0 (0x00) – Control Settings

bit 7	bit 6	bit 5	bit 4	bit 3	bit 2	bit 1	bit 0
RESET	PD	RESERVED	RESERVED	RESERVED	RESERVED	RESERVED	PWRITE

Table 2. Register 0 (0x00) – Control Settings Field Descriptions

Bit	Field	Type	Reset	Description
7	RESET	W	0h	Reset registers bit 1 = Resets all registers to default values 0 = Normal operation
6	PD	R/W	0h	Power down bit 1 = Power down all channels ($I_{CC} \approx 4$ mA) 0 = Normal operation
5	Reserved			
4	Reserved			
3	Reserved			
2	Reserved			
1	Reserved			
0	PWRITE	R/W	0h	Parallel write mode bit 1 = Parallel write enabled (write register value to all channels) 0 = Serial write

7.5.2 Register 1 (0x01) – Amplitude and Rate for Channel 1 (offset = 1h) [reset = 0h]

Figure 17. Register 1 (0x01) – Amplitude and Rate for Channel 1

bit 7	bit 6	bit 5	bit 4	bit 3	bit 2	bit 1	bit 0
RATE3	RATE2	RATE1	RATE0	AMP3	AMP2	AMP1	AMP0

Table 3. Register 1 (0x01) – Amplitude and Rate for Channel 1 Field Descriptions

Bit	Field	Type	Reset	Description
7 6 5 4	RATE3 RATE2 RATE1 RATE0	R/W	0h	Rate adjustments bits for channel 1 0000 – 21 GHz (default) 0111 – BW decrease of approximately 0.4 GHz 1111 – BW increase of approximately 0.4 GHz
3 2 1 0	AMP3 AMP2 AMP1 AMP0	R/W	0h	Amplitude adjustment bits for channel 1 0000 – 0mVpp (default) 1000 – 250mVpp 0001 – 50mVpp 1001 – 300mVpp 0010 – 100mVpp 1010 – 350mVpp 0011 – 150mVpp 1011 – 400mVpp 0100 – 200mVpp 1100 – 450mVpp 0101 – 250mVpp 1101 – 500mVpp 0110 – 300mVpp 1110 – 550mVpp 0111 – 350mVpp 1111 – 600mVpp

7.5.3 Register 2 (0x02) Mapping – Threshold and Gain for Channel 1 (offset = 2h) [reset = 0h]

Figure 18. Register 2 (0x02) – Threshold and Gain for Channel 1

bit 7	bit 6	bit 5	bit 4	bit 3	bit 2	bit 1	bit 0
PD	DIS	GAIN1	GAIN0	TH3	TH2	TH1	TH0

Table 4. Register 2 (0x02) – Threshold and Gain for Channel 1

Bit	Field	Type	Reset	Description
7	PD	R/W	0h	Power down bit for channel 1 1 = Power down channel 1 0 = Normal operation
6	DIS	R/W	0h	Disable output buffer for channel 1 1 = Disable channel 1 output buffer 0 = Normal operation
5 4	GAIN1 GAIN0	R/W	0h	Gain adjustment bits for channel 1 00 – default 10 – medium (–4 dB) 01 – NA 11 – minimum (–8 dB)
3 2 1 0	TH3 TH2 TH1 TH0	R/W	0h	Threshold adjustment bits for channel 1 Minimum positive shift for 0001 Maximum positive shift for 0111 Zero shift for 0000 or 1000 Minimum negative shift for 1001 Maximum negative shift for 1111

7.5.4 Register 3 (0x03) – Reserved

Figure 19. Register 3 (0x03) – Reserved

bit 7	bit 6	bit 5	bit 4	bit 3	bit 2	bit 1	bit 0
–	–	–	–	–	–	–	–

Table 5. Register 3 (0x03) – Reserved Field Descriptions

Bit	Field	Type	Reset	Description
0-7	–			Reserved

7.5.5 Register 4 (0x04) – Reserved
Figure 20. Register 4 (0x04) – Reserved

bit 7	bit 6	bit 5	bit 4	bit 3	bit 2	bit 1	bit 0
–	–	–	–	–	–	–	–

Table 6. Register 4 (0x04) – Reserved Field Descriptions

Bit	Field	Type	Reset	Description
0-7	–			Reserved

7.5.6 Register 5 (0x05) – Reserved
Figure 21. Register 5 (0x05) – Reserved

bit 7	bit 6	bit 5	bit 4	bit 3	bit 2	bit 1	bit 0
–	–	–	–	–	–	–	–

Table 7. Register 5 (0x05) – Reserved Field Descriptions

Bit	Field	Type	Reset	Description
0-7	–			Reserved

7.5.7 Register 6 (0x06) – Reserved
Figure 22. Register 6 (0x06) – Reserved

bit 7	bit 6	bit 5	bit 4	bit 3	bit 2	bit 1	bit 0
–	–	–	–	–	–	–	–

Table 8. Register 6 (0x06) – Reserved Field Descriptions

Bit	Field	Type	Reset	Description
0-7	–			Reserved

7.5.8 Register 7 (0x07) – Amplitude and Rate for Channel 2 (offset = 7h) [reset = 0h]
Figure 23. Register 7 (0x07) – Amplitude and Rate for Channel 2

bit 7	bit 6	bit 5	bit 4	bit 3	bit 2	bit 1	bit 0
RATE3	RATE2	RATE1	RATE0	AMP3	AMP2	AMP1	AMP0

Table 9. Register 7 (0x07) – Amplitude and Rate for Channel 2 Field Descriptions

Bit	Field	Type	Reset	Description
7 6 5 4	RATE3 RATE2 RATE1 RATE0	R/W	0h	Rate adjustments bits for channel 2 0000 – 21 GHz (default) 0111 – BW decrease of approximately 0.4 GHz 1111 – BW increase of approximately 0.4 GHz
3 2 1 0	AMP3 AMP2 AMP1 AMP0	R/W	0h	Amplitude adjustment bits for channel 2 0000 – 0mVpp (default) 1000 – 250mVpp 0001 – 50mVpp 1001 – 300mVpp 0010 – 100mVpp 1010 – 350mVpp 0011 – 150mVpp 1011 – 400mVpp 0100 – 200mVpp 1100 – 450mVpp 0101 – 250mVpp 1101 – 500mVpp 0110 – 300mVpp 1110 – 550mVpp 0111 – 350mVpp 1111 – 600mVpp

7.5.9 Register 8 (0x08) Mapping – Threshold and Gain for Channel 1 (offset = 8h) [reset = 0h]

Figure 24. Register 8 (0x08) – Threshold and Gain for Channel 2

bit 7	bit 6	bit 5	bit 4	bit 3	bit 2	bit 1	bit 0
PD	DIS	GAIN1	GAIN0	TH3	TH2	TH1	TH0

Table 10. Register 8 (0x08) – Threshold and Gain for Channel 2

Bit	Field	Type	Reset	Description
7	PD	R/W	0h	Power down bit for channel 2 1 = Power down channel 2 0 = Normal operation
6	DIS	R/W	0h	Disable output buffer for channel 2 1 = Disable channel 2 output buffer 0 = Normal operation
5 4	GAIN1 GAIN0	R/W	0h	Gain adjustment bits for channel 2 00 – default 10 – medium (–4 dB) 01 – NA 11 – minimum (–8 dB)
3 2 1 0	TH3 TH2 TH1 TH0	R/W	0h	Threshold adjustment bits for channel 2 Minimum positive shift for 0001 Maximum positive shift for 0111 Zero shift for 0000 or 1000 Minimum negative shift for 1001 Maximum negative shift for 1111

7.5.10 Register 9 (0x09) – Reserved

Figure 25. Register 9 (0x09) – Reserved

bit 7	bit 6	bit 5	bit 4	bit 3	bit 2	bit 1	bit 0
–	–	–	–	–	–	–	–

Table 11. Register 9 (0x09) – Reserved Field Descriptions

Bit	Field	Type	Reset	Description
0-7	–			Reserved

7.5.11 Register 10 (0x0A) – Reserved

Figure 26. Register 10 (0x0A) – Reserved

bit 7	bit 6	bit 5	bit 4	bit 3	bit 2	bit 1	bit 0
–	–	–	–	–	–	–	–

Table 12. Register 10 (0x0A) – Reserved Field Descriptions

Bit	Field	Type	Reset	Description
0-7	–			Reserved

7.5.12 Register 11 (0x0B) – Reserved

Figure 27. Register 11 (0x0B) – Reserved

bit 7	bit 6	bit 5	bit 4	bit 3	bit 2	bit 1	bit 0
–	–	–	–	–	–	–	–

Table 13. Register 11 (0x0B) – Reserved Field Descriptions

Bit	Field	Type	Reset	Description
0-7	–			Reserved

7.5.13 Register 12 (0x0C) – Reserved
Figure 28. Register 12 (0x0C) – Reserved

bit 7	bit 6	bit 5	bit 4	bit 3	bit 2	bit 1	bit 0
–	–	–	–	–	–	–	–

Table 14. Register 12 (0x0C) – Reserved Field Descriptions

Bit	Field	Type	Reset	Description
0-7	–			Reserved

7.5.14 Register 13 (0x0D) – Amplitude and Rate for Channel 3 (offset = Dh) [reset = 0h]
Figure 29. Register 13 (0x0D) – Amplitude and Rate for Channel 3

bit 7	bit 6	bit 5	bit 4	bit 3	bit 2	bit 1	bit 0
RATE3	RATE2	RATE1	RATE0	AMP3	AMP2	AMP1	AMP0

Table 15. Register 13 (0x0D) – Amplitude and Rate for Channel 3 Field Descriptions

Bit	Field	Type	Reset	Description
7 6 5 4	RATE3 RATE2 RATE1 RATE0	R/W	0h	Rate adjustments bits for channel 3 0000 – 21 GHz (default) 0111 – BW decrease of approximately 0.4 GHz 1111 – BW increase of approximately 0.4 GHz
3 2 1 0	AMP3 AMP2 AMP1 AMP0	R/W	0h	Amplitude adjustment bits for channel 3 0000 – 0mVpp (default) 1000 – 250mVpp 0001 – 50mVpp 1001 – 300mVpp 0010 – 100mVpp 1010 – 350mVpp 0011 – 150mVpp 1011 – 400mVpp 0100 – 200mVpp 1100 – 450mVpp 0101 – 250mVpp 1101 – 500mVpp 0110 – 300mVpp 1110 – 550mVpp 0111 – 350mVpp 1111 – 600mVpp

7.5.15 Register 14 (0x0E) Mapping – Threshold and Gain for Channel 3 (offset = Eh) [reset = 0h]
Figure 30. Register 14 (0x0E) – Threshold and Gain for Channel 3

bit 7	bit 6	bit 5	bit 4	bit 3	bit 2	bit 1	bit 0
PD	DIS	GAIN1	GAIN0	TH3	TH2	TH1	TH0

Table 16. Register 14 (0x0E) – Threshold and Gain for Channel 3

Bit	Field	Type	Reset	Description
7	PD	R/W	0h	Power down bit for channel 3 1 = Power down channel 3 0 = Normal operation
6	DIS	R/W	0h	Disable output buffer for channel 3 1 = Disable channel 3 output buffer 0 = Normal operation
5 4	GAIN1 GAIN0	R/W	0h	Gain adjustment bits for channel 3 00 – default 10 – medium (–4 dB) 01 – NA 11 – minimum (–8 dB)
3 2 1 0	TH3 TH2 TH1 TH0	R/W	0h	Threshold adjustment bits for channel 3 Minimum positive shift for 0001 Maximum positive shift for 0111 Zero shift for 0000 or 1000 Minimum negative shift for 1001 Maximum negative shift for 1111

7.5.16 Register 15 (0x0F) – Reserved
Figure 31. Register 15 (0x0F) – Reserved

bit 7	bit 6	bit 5	bit 4	bit 3	bit 2	bit 1	bit 0
–	–	–	–	–	–	–	–

Table 17. Register 15 (0x0F) – Reserved Field Descriptions

Bit	Field	Type	Reset	Description
0-7	–			Reserved

7.5.17 Register 16 (0x10) – Reserved
Figure 32. Register 16 (0x10) – Reserved

bit 7	bit 6	bit 5	bit 4	bit 3	bit 2	bit 1	bit 0
–	–	–	–	–	–	–	–

Table 18. Register 16 (0x10) – Reserved Field Descriptions

Bit	Field	Type	Reset	Description
0-7	–			Reserved

7.5.18 Register 17 (0x11) – Reserved
Figure 33. Register 17 (0x11) – Reserved

bit 7	bit 6	bit 5	bit 4	bit 3	bit 2	bit 1	bit 0
–	–	–	–	–	–	–	–

Table 19. Register 17 (0x11) – Reserved Field Descriptions

Bit	Field	Type	Reset	Description
0-7	–			Reserved

7.5.19 Register 18 (0x12) – Reserved
Figure 34. Register 18 (0x12) – Reserved

bit 7	bit 6	bit 5	bit 4	bit 3	bit 2	bit 1	bit 0
–	–	–	–	–	–	–	–

Table 20. Register 18 (0x12) – Reserved Field Descriptions

Bit	Field	Type	Reset	Description
0-7	–			Reserved

7.5.20 Register 19 (0x13) – Amplitude and Rate for Channel 4 (offset = 13h) [reset = 0h]
Figure 35. Register 19 (0x13) – Amplitude and Rate for Channel 4

bit 7	bit 6	bit 5	bit 4	bit 3	bit 2	bit 1	bit 0
RATE3	RATE2	RATE1	RATE0	AMP3	AMP2	AMP1	AMP0

Table 21. Register 19 (0x13) – Amplitude and Rate for Channel 4 Field Descriptions

Bit	Field	Type	Reset	Description
7 6 5 4	RATE3 RATE2 RATE1 RATE0	R/W	0h	Rate adjustments bits for channel 4 0000 – 21 GHz (default) 0111 – BW decrease of approximately 0.4 GHz 1111 – BW increase of approximately 0.4 GHz
3 2 1 0	AMP3 AMP2 AMP1 AMP0	R/W	0h	Amplitude adjustment bits for channel 4 0000 – 0mVpp (default) 1000 – 250mVpp 0001 – 50mVpp 1001 – 300mVpp 0010 – 100mVpp 1010 – 350mVpp 0011 – 150mVpp 1011 – 400mVpp 0100 – 200mVpp 1100 – 450mVpp 0101 – 250mVpp 1101 – 500mVpp 0110 – 300mVpp 1110 – 550mVpp 0111 – 350mVpp 1111 – 600mVpp

7.5.21 Register 20 (0x14) Mapping – Threshold and Gain for Channel 4 (offset =14h) [reset = 0h]
Figure 36. Register 20 (0x14) – Threshold and Gain for Channel 4

bit 7	bit 6	bit 5	bit 4	bit 3	bit 2	bit 1	bit 0
PD	DIS	GAIN1	GAIN0	TH3	TH2	TH1	TH0

Table 22. Register 20 (0x14) – Threshold and Gain for Channel 4

Bit	Field	Type	Reset	Description
7	PD	R/W	0h	Power down bit for channel 4 1 = Power down channel 4 0 = Normal operation
6	DIS	R/W	0h	Disable output buffer for channel 4 1 = Disable channel 4 output buffer 0 = Normal operation
5 4	GAIN1 GAIN0	R/W	0h	Gain adjustment bits for channel 4 00 – default 10 – medium (–4 dB) 01 – NA 11 – minimum (–8 dB)
3 2 1 0	TH3 TH2 TH1 TH0	R/W	0h	Threshold adjustment bits for channel 4 Minimum positive shift for 0001 Maximum positive shift for 0111 Zero shift for 0000 or 1000 Minimum negative shift for 1001 Maximum negative shift for 1111

7.5.22 Register 21 (0x15) – Reserved
Figure 37. Register 21 (0x15) – Reserved

bit 7	bit 6	bit 5	bit 4	bit 3	bit 2	bit 1	bit 0
–	–	–	–	–	–	–	–

Table 23. Register 21 (0x15) – Reserved Field Descriptions

Bit	Field	Type	Reset	Description
0-7	–			Reserved

7.5.23 Register 22 (0x10) – Reserved
Figure 38. Register 21 (0x10) – Reserved

bit 7	bit 6	bit 5	bit 4	bit 3	bit 2	bit 1	bit 0
–	–	–	–	–	–	–	–

Table 24. Register 21 (0x10) – Reserved Field Descriptions

Bit	Field	Type	Reset	Description
0-7	–			Reserved

7.5.24 Register 23 (0x17) – Reserved
Figure 39. Register 23 (0x17) – Reserved

bit 7	bit 6	bit 5	bit 4	bit 3	bit 2	bit 1	bit 0
–	–	–	–	–	–	–	–

Table 25. Register 23 (0x17) – Reserved Field Descriptions

Bit	Field	Type	Reset	Description
0-7	–			Reserved

7.5.25 Register 24 (0x18) – Reserved
Figure 40. Register 24 (0x18) – Reserved

bit 7	bit 6	bit 5	bit 4	bit 3	bit 2	bit 1	bit 0
–	–	–	–	–	–	–	–

Table 26. Register 24 (0x18) – Reserved Field Descriptions

Bit	Field	Type	Reset	Description
0-7	–			Reserved

7.5.26 Register 25 (0x19) – Reserved
Figure 41. Register 25 (0x19) – Reserved

bit 7	bit 6	bit 5	bit 4	bit 3	bit 2	bit 1	bit 0
–	–	–	–	–	–	–	–

Table 27. Register 25 (0x19) – Reserved Field Descriptions

Bit	Field	Type	Reset	Description
0-7	–			Reserved

8 Application and Implementation

8.1 Application Information

Figure 42 shows the ONET2804T being used in a 4 x 25 Gbps fiber optic receiver with pin control and Figure 45 shows the device being used with 2-wire control. The ONET2804T converts the electrical current generated by the PIN photodiode into a differential output voltage. The FILTER inputs provide a DC bias voltage for the PIN that is low pass filtered. Because the voltage drop across the photodiode FET is sensed and used by the bias circuit, the photodiode must be connected to the FILTER pads for the bias to function correctly.

The RSSI outputs are used to mirror the photodiode output current and can be connected via resistors to GND. The voltage gain can be adjusted for the intended application by choosing the external resistor; however, for proper operation of the ONET2804T, ensure that the voltage at RSSI never exceeds $V_{CC} - 0.65$ V. If the RSSI outputs are not used while operating with internal PD bias they should be left open.

The OUT+ and OUT– pins are internally terminated by 50 Ω pull-up resistors to VCC. The outputs must be AC coupled, for example by using 0.1 μ F capacitors, to the succeeding device.

8.2 Typical Applications

8.2.1 Typical Application, Pad Control

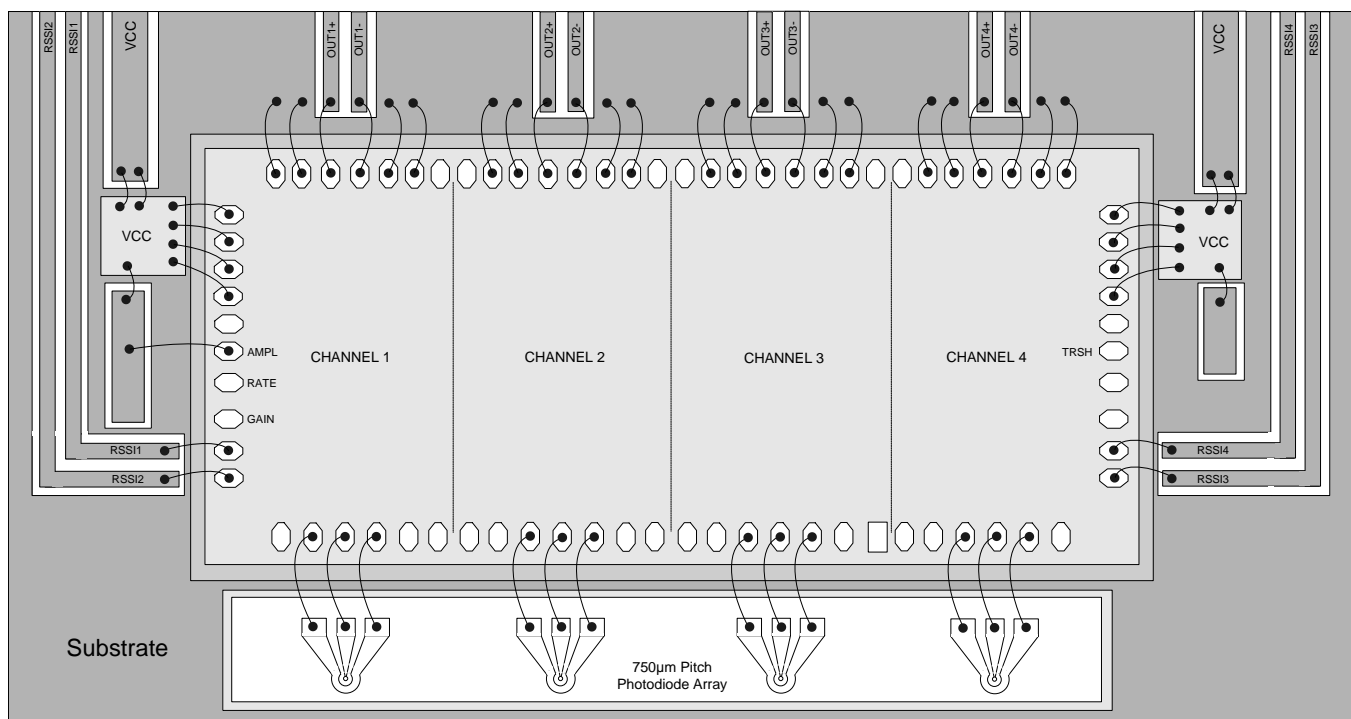


Figure 42. Basic Application Circuit with Pad Control

8.2.1.1 Design Requirements

Table 28. Design Parameters

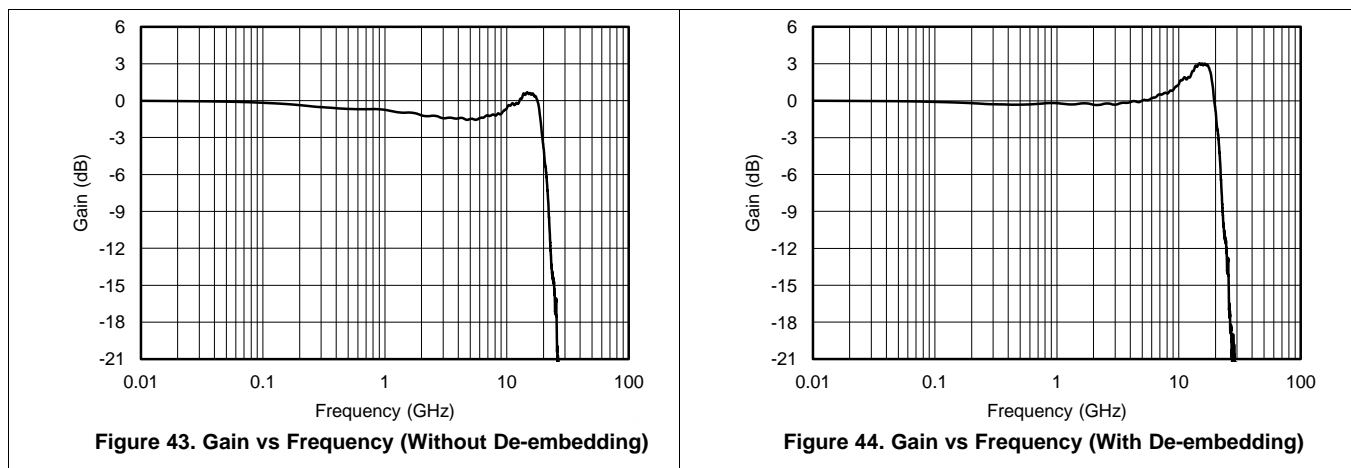
PARAMETER	VALUE
Input voltage	3.3 V
Output voltage	500 mV _{PP}

8.2.1.2 Detailed Design Procedure

The ONET2804T is designed to be used in conjunction with a 750 μm pitch photodiode array or individual photodiodes and assembled into a receiver optical sub-assembly (ROSA). The TIA will typically be mounted on a ceramic substrate with etched connections for VCC, RSSI and 100 Ω differential transmission lines for the output voltage. The photodiode converts the optical input signal into a current that is supplied to the TIA through wire bonds. The TIA then converts the input current into a voltage and further amplifies the signal. It is recommended to set the output amplitude to the 500 mV_{PP} level by bonding AMPL (pad 6) to VCC.

The ROSA is typically mounted on a printed circuit board (PCB) with 100 Ω differential transmission lines and RF connectors such as GPPO or 2.4 mm SMA. When measuring the output from the ROSA mounted on the PCB, the frequency dependent loss of the transmission lines will impact the frequency response. The loss can be de-embedded from the measurement to determine the actual frequency response at the output of the ROSA. [Figure 43](#) shows a typical frequency response without the loss de-embedded and [Figure 44](#) shows a typical frequency response with the loss de-embedded.

8.2.1.3 Application Curves



8.2.2 Typical Application, 2-Wire Control

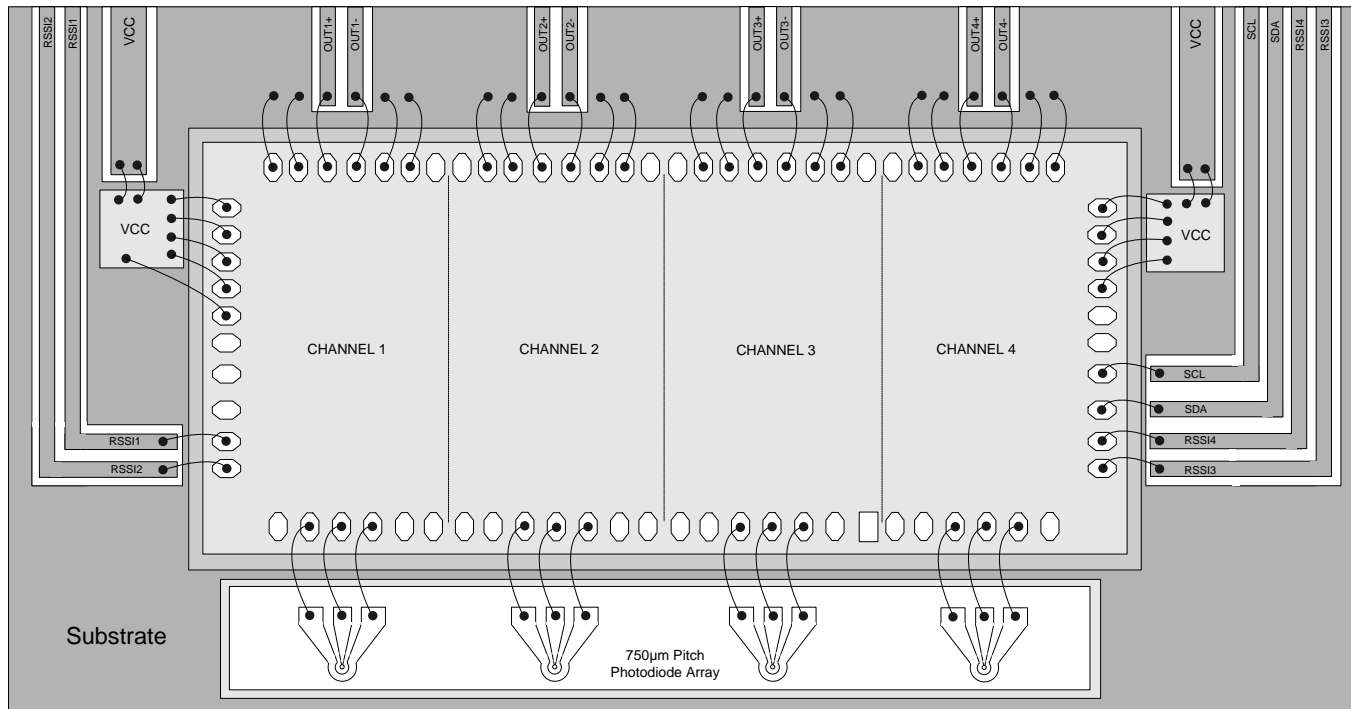


Figure 45. Basic Application Circuit with 2-Wire Control

8.2.2.1 Design Requirements

Refer to [Typical Application, Pad Control](#) for the Design Requirements.

8.2.2.2 Detailed Design Procedure

Refer to [Typical Application, Pad Control](#) for the Detailed Design Procedure.

8.2.2.3 Application Curves

Refer to [Typical Application, Pad Control](#) for the Application Curves.

9 Power Supply Recommendations

The ONET2804T is designed to operate from an input supply voltage range between 2.97 V and 3.47 V. There are a total of 8 power supply pads that must be connected for proper operation. VCCI1-4 are used to supply power to the input transimpedance amplifier stages and VCCO1-4 are used to supply power to the voltage amplifiers and output buffers. Each amplifier is powered up separately but there are some common internal connections for support circuitry such as the 2-wire interface. Therefore, if only one channel is being evaluated, all 8 supply pads must be connected. It is recommended to use two single layer ceramic (SLC) capacitors in the range of 270 pF to 680 pF for power supply decoupling. VCCI1, VCCI2, VCCO1 and VCCO2 should be bonded to one capacitor and VCCI3, VCCI4, VCCO3 and VCCO4 should be bonded to the other capacitor. Refer to [Figure 42](#) and [Figure 45](#) for reference.

10 Layout

10.1 Layout Guidelines

Careful attention to assembly parasitics and external components is necessary to achieve optimal performance.

- Minimize the total capacitance on the IN pad by using a low capacitance photodiode (100fF) and paying attention to stray capacitances. Place the photodiode close to the ONET2804T die and keep the wire bond inductance in the range of 300 to 400pH.
- Use identical termination and symmetrical transmission lines at the AC coupled differential output pins OUT+ and OUT–.
- Use short bond wire connections for the supply terminals VCCIx, VCCOx and GND. Supply voltage filtering is provided on chip but filtering may be improved by using an additional external capacitor.
- The die has backside metal and conductive epoxy must be used to attach the die to ground.

10.2 Layout Example

The IC dimensions are shown in [Figure 46](#), and the pad locations are provided in [Table 29](#). The device is designed for wire bonding not flip chip.

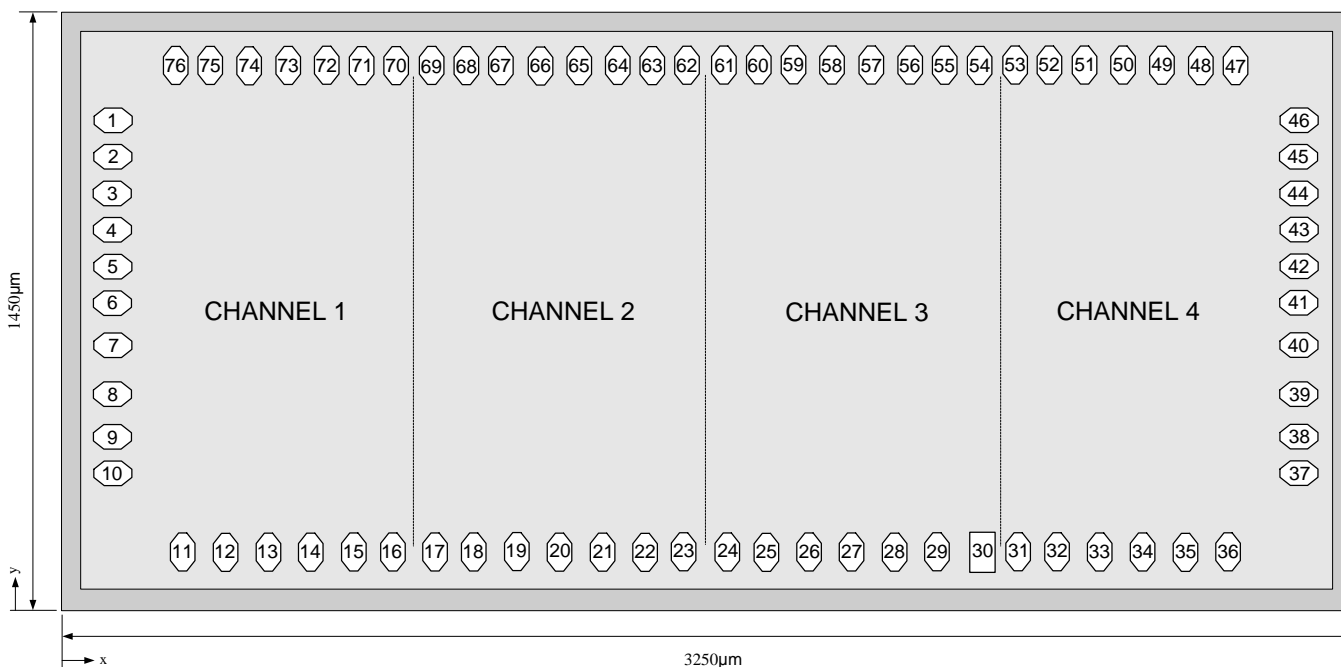


Figure 46. Chip Dimensions and Pad Locations

Die Thickness: $203 \pm 13 \mu\text{m}$

Pad Dimensions: $105 \mu\text{m} \times 65 \mu\text{m}$

Die Size: $3250 \mu\text{m} \pm 40\mu\text{m} \times 1450 \mu\text{m} \pm 40\mu\text{m}$

Layout Example (continued)
Table 29. Bond Pad Co-ordinates

PAD	COORDINATES (Referenced to Pad 1)		SYMBOL	TYPE	DESCRIPTION
	x (µm)	y (µm)			
1	0	0	VCCO1	Supply	3.3V supply voltage
2	0	-94	VCCO2	Supply	3.3V supply voltage
3	0	-188	VCCI2	Supply	3.3V supply voltage
4	0	-282	VCCI1	Supply	3.3V supply voltage
5	0	-376	I2CENA	Digital input	I2C Enable
6	0	-470	AMPL	Digital input	Amplitude control
7	0	-580	RATE	Digital input	Rate selection
8	0	-704	GAIN	Digital input	Gain control
9	0	-814	RSSI1	Analog output	Receive signal strength indicator for channel 1
10	0	-908	RSSI2	Analog output	Receive signal strength indicator for channel 2
11	180	-1110	GND	Supply	Circuit ground
12	290	-1110	FILTER1	Analog output	Bias voltage for photodiode 1
13	400	-1110	IN1	Analog input	TIA input for channel 1
14	510	-1110	FILTER1	Analog output	Bias voltage for photodiode 1
15	620	-1110	GND	Supply	Circuit ground
16	720	-1110	NC	No connect	Do not connect
17	829	-1110	NC	No connect	Do not connect
18	929	-1110	GND	Supply	Circuit ground
19	1039	-1110	FILTER2	Analog output	Bias voltage for photodiode 2
20	1149	-1110	IN2	Analog input	TIA input for channel 2
21	1259	-1110	FILTER2	Analog output	Bias voltage for photodiode 2
22	1369	-1110	GND	Supply	Circuit ground
23	1469	-1110	NC	No connect	Do not connect
24	1580	-1110	NC	No connect	Do not connect
25	1680	-1110	GND	Supply	Circuit ground
26	1790	-1110	FILTER3	Analog output	Bias voltage for photodiode 3
27	1900	-1110	IN3	Analog input	TIA input for channel 3
28	2010	-1110	FILTER3	Analog output	Bias voltage for photodiode 3
29	2120	-1110	GND	Supply	Circuit ground
30	2239	-1110	NC	No connect	Do not connect
31	2329	-1110	NC	No connect	Do not connect
32	2429	-1110	GND	Supply	Circuit ground
33	2539	-1110	FILTER4	Analog output	Bias voltage for photodiode 4
34	2649	-1110	IN4	Analog input	TIA input for channel 4
35	2759	-1110	FILTER4	Analog output	Bias voltage for photodiode 4
36	2869	-1110	GND	Supply	Circuit ground
37	3051	-908	RSSI3	Analog output	Receive signal strength indicator for channel 3
38	3051	-814	RSSI4	Analog output	Receive signal strength indicator for channel 4
39	3051	-704	SDA	Digital in/out	2-wire data
40	3051	-579	SCL	Digital input	2-wire clock
41	3051	-470	TRSH	Digital input	Input threshold control (cross-point)
42	3051	-376	NC	No connect	Do not connect
43	3051	-282	VCCI4	Supply	3.3V supply voltage
44	3051	-188	VCCI3	Supply	3.3V supply voltage

Layout Example (continued)
Table 29. Bond Pad Co-ordinates (continued)

PAD	COORDINATES (Referenced to Pad 1)		SYMBOL	TYPE	DESCRIPTION
	x (μm)	y (μm)			
45	3051	-94	VCCO3	Supply	3.3V supply voltage
46	3051	0	VCCO4	Supply	3.3V supply voltage
47	2888	140	GND	Supply	Circuit ground
48	2799	140	GND	Supply	Circuit ground
49	2699	140	OUT4-	Analog output	Inverted data output for channel 4
50	2599	140	OUT4+	Analog output	Non-inverted data output for channel 4
51	2499	140	GND	Supply	Circuit ground
52	2410	140	GND	Supply	Circuit ground
53	2322	140	ADR1	Digital input	2-wire address bit 1 control
54	2228	140	ADR0	Digital input	2-wire address bit 0 control
55	2139	140	GND	Supply	Circuit ground
56	2050	140	GND	Supply	Circuit ground
57	1950	140	OUT3-	Analog output	Inverted data output for channel 3
58	1850	140	OUT3+	Analog output	Non-inverted data output for channel 3
59	1750	140	GND	Supply	Circuit ground
60	1661	140	GND	Supply	Circuit ground
61	1572	140	NC	No connect	Do not connect
62	1477	140	NC	No connect	Do not connect
63	1388	140	GND	Supply	Circuit ground
64	1299	140	GND	Supply	Circuit ground
65	1199	140	OUT2-	Analog output	Inverted data output for channel 2
66	1099	140	OUT2+	Analog output	Non-inverted data output for channel 2
67	999	140	GND	Supply	Circuit ground
68	910	140	GND	Supply	Circuit ground
69	821	140	NC	No connect	Do not connect
70	728	140	NRESET	Digital input	2-wire negative reset
71	639	140	GND	Supply	Circuit ground
72	550	140	GND	Supply	Circuit ground
73	450	140	OUT1-	Analog output	Inverted data output for channel 1
74	350	140	OUT1+	Analog output	Non-inverted data output for channel 1
75	250	140	GND	Supply	Circuit ground
76	161	140	GND	Supply	Circuit ground

11 デバイスおよびドキュメントのサポート

11.1 ドキュメントの更新通知を受け取る方法

ドキュメントの更新についての通知を受け取るには、ti.comのデバイス製品フォルダを開いてください。右上の隅にある「通知を受け取る」をクリックして登録すると、変更されたすべての製品情報に関するダイジェストを毎週受け取れます。変更の詳細については、修正されたドキュメントに含まれている改訂履歴をご覧ください。

11.2 コミュニティ・リソース

The following links connect to TI community resources. Linked contents are provided "AS IS" by the respective contributors. They do not constitute TI specifications and do not necessarily reflect TI's views; see TI's [Terms of Use](#).

TI E2E™オンライン・コミュニティ *TIのE2E (Engineer-to-Engineer)* コミュニティ。エンジニア間の共同作業を促進するために開設されたものです。e2e.ti.comでは、他のエンジニアに質問し、知識を共有し、アイデアを検討して、問題解決に役立てることができます。

設計サポート *TIの設計サポート* 役に立つE2Eフォーラムや、設計サポート・ツールをすばやく見つけることができます。技術サポート用の連絡先情報も参照できます。

11.3 商標

E2E is a trademark of Texas Instruments.
All other trademarks are the property of their respective owners.

11.4 静電気放電に関する注意事項



すべての集積回路は、適切なESD保護方法を用いて、取扱いと保存を行うようにして下さい。

静電気放電はわずかな性能の低下から完全なデバイスの故障に至るまで、様々な損傷を与えます。高精度の集積回路は、損傷に対して敏感であり、極めてわずかなパラメータの変化により、デバイスに規定された仕様に適合しなくなる場合があります。

11.5 Glossary

SLYZ022 — *TI Glossary*.

This glossary lists and explains terms, acronyms, and definitions.

12 メカニカル、パッケージ、および注文情報

以降のページには、メカニカル、パッケージ、および注文に関する情報が記載されています。この情報は、そのデバイスについて利用可能な最新のデータです。このデータは予告なく変更されることがあり、ドキュメントが改訂される場合もあります。本データシートのブラウザ版を使用されている場合は、画面左側の説明をご覧ください。

PACKAGING INFORMATION

Orderable Device	Status (1)	Package Type	Package Drawing	Pins	Package Qty	Eco Plan (2)	Lead finish/ Ball material (6)	MSL Peak Temp (3)	Op Temp (°C)	Device Marking (4/5)	Samples
ONET2804TY	ACTIVE	DIESALE	Y	0	675	TBD	Call TI	Call TI	-40 to 100		Samples

(1) The marketing status values are defined as follows:

ACTIVE: Product device recommended for new designs.

LIFEBUY: TI has announced that the device will be discontinued, and a lifetime-buy period is in effect.

NRND: Not recommended for new designs. Device is in production to support existing customers, but TI does not recommend using this part in a new design.

PREVIEW: Device has been announced but is not in production. Samples may or may not be available.

OBSELETE: TI has discontinued the production of the device.

(2) **RoHS:** TI defines "RoHS" to mean semiconductor products that are compliant with the current EU RoHS requirements for all 10 RoHS substances, including the requirement that RoHS substance do not exceed 0.1% by weight in homogeneous materials. Where designed to be soldered at high temperatures, "RoHS" products are suitable for use in specified lead-free processes. TI may reference these types of products as "Pb-Free".

RoHS Exempt: TI defines "RoHS Exempt" to mean products that contain lead but are compliant with EU RoHS pursuant to a specific EU RoHS exemption.

Green: TI defines "Green" to mean the content of Chlorine (Cl) and Bromine (Br) based flame retardants meet JS709B low halogen requirements of <=1000ppm threshold. Antimony trioxide based flame retardants must also meet the <=1000ppm threshold requirement.

(3) MSL, Peak Temp. - The Moisture Sensitivity Level rating according to the JEDEC industry standard classifications, and peak solder temperature.

(4) There may be additional marking, which relates to the logo, the lot trace code information, or the environmental category on the device.

(5) Multiple Device Markings will be inside parentheses. Only one Device Marking contained in parentheses and separated by a "-" will appear on a device. If a line is indented then it is a continuation of the previous line and the two combined represent the entire Device Marking for that device.

(6) Lead finish/Ball material - Orderable Devices may have multiple material finish options. Finish options are separated by a vertical ruled line. Lead finish/Ball material values may wrap to two lines if the finish value exceeds the maximum column width.

Important Information and Disclaimer:The information provided on this page represents TI's knowledge and belief as of the date that it is provided. TI bases its knowledge and belief on information provided by third parties, and makes no representation or warranty as to the accuracy of such information. Efforts are underway to better integrate information from third parties. TI has taken and continues to take reasonable steps to provide representative and accurate information but may not have conducted destructive testing or chemical analysis on incoming materials and chemicals. TI and TI suppliers consider certain information to be proprietary, and thus CAS numbers and other limited information may not be available for release.

In no event shall TI's liability arising out of such information exceed the total purchase price of the TI part(s) at issue in this document sold by TI to Customer on an annual basis.

重要なお知らせと免責事項

TI は、技術データと信頼性データ(データシートを含みます)、設計リソース(リファレンス・デザインを含みます)、アプリケーションや設計に関する各種アドバイス、Web ツール、安全性情報、その他のリソースを、欠陥が存在する可能性のある「現状のまま」提供しており、商品性および特定目的に対する適合性の黙示保証、第三者の知的財産権の非侵害保証を含むいかなる保証も、明示的または黙示的にかかわらず拒否します。

これらのリソースは、TI 製品を使用する設計の経験を積んだ開発者への提供を意図したものです。(1) お客様のアプリケーションに適した TI 製品の選定、(2) お客様のアプリケーションの設計、検証、試験、(3) お客様のアプリケーションに該当する各種規格や、その他のあらゆる安全性、セキュリティ、規制、または他の要件への確実な適合に関する責任を、お客様のみが単独で負うものとし、

上記の各種リソースは、予告なく変更される可能性があります。これらのリソースは、リソースで説明されている TI 製品を使用するアプリケーションの開発の目的でのみ、TI はその使用をお客様に許諾します。これらのリソースに関して、他の目的で複製することや掲載することは禁止されています。TI や第三者の知的財産権のライセンスが付与されている訳ではありません。お客様は、これらのリソースを自身で使用した結果発生するあらゆる申し立て、損害、費用、損失、責任について、TI およびその代理人を完全に補償するものとし、TI は一切の責任を拒否します。

TI の製品は、[TI の販売条件](#)、または [ti.com](https://www.ti.com) やかかる TI 製品の関連資料などのいずれかを通じて提供する適用可能な条項の下で提供されています。TI がこれらのリソースを提供することは、適用される TI の保証または他の保証の放棄の拡大や変更を意味するものではありません。

お客様がいかなる追加条項または代替条項を提案した場合でも、TI はそれらに異議を唱え、拒否します。

郵送先住所：Texas Instruments, Post Office Box 655303, Dallas, Texas 75265

Copyright © 2022, Texas Instruments Incorporated