

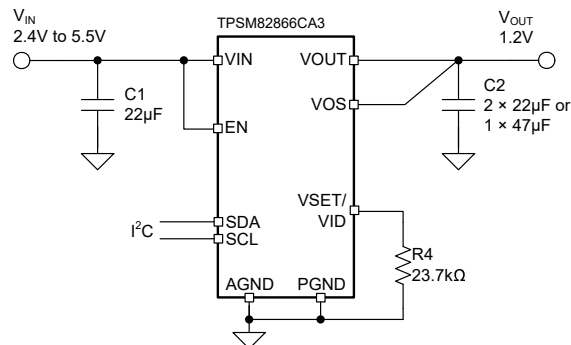
TPSM8286xx 2.4V~5.5V 入力、4A/6A、降圧パワー モジュール、インダクタ内蔵、I²C インターフェイス搭載、MagPack™ パッケージ

1 特長

- 最大 96% の効率
- 優れた放熱対策
- I²C 互換インターフェイス: 最高 3.4Mbps
- 出力電圧精度: 1%
- DCS-Control トポロジにより、高速過渡応答を実現
- I²C プログラムプル:
 - 出力電圧
 - 0.4~1.675V (5mV 刻み)
 - 0.8~3.35V (10mV 刻み)
 - 強制 PWM またはパワー セーブ モード
 - 出力電圧放電
- I²C デバイス ステータス読み戻し:
 - 過熱警告
 - ヒックアップ電流制限
 - V_{in} が UVLO 未満
- 抵抗を選択可能:
 - I²C アドレス
 - 16 のスタートアップ出力電圧オプション
- 低 EMI 要件に対して最適化
 - ボンドワイヤ パッケージなし
 - MagPack テクノロジーはインダクタと IC をシールド
 - 最適化されたピン配置によるレイアウトの簡素化
- 動作時の静止電流 4μA
- 40°C~125°C の動作温度範囲
- 2.3mm × 3.0mm × 1.95mm の QFN パッケージ
- 28mm² の設計サイズ
- I²C インターフェイスなしでも供給可能: [TPSM82866A](#)

2 アプリケーション

- FPGA、CPU、ASIC のコア電源
- 光モジュール



代表的なアプリケーション回路図

- 医療用画像処理
- ファクトリ オートメーション / 制御
- 航空宇宙および防衛

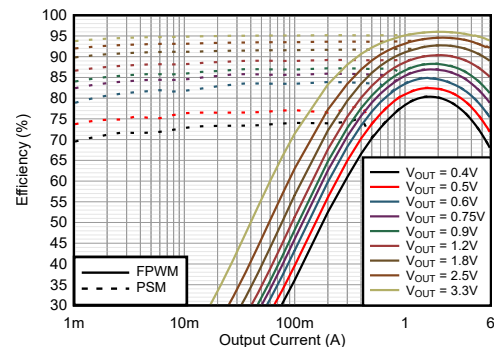
3 概要

TPSM8286xx デバイス ファミリーは、小さいデザイン サイズと高い効率を実現できるように設計された 4A および 6A 降圧コンバータ パワー モジュールで構成されています。このパワー モジュールにはテキサス・インスツルメンツの MagPack テクノロジーを使用して同期整流降圧コンバータとインダクタが組み込まれているため、設計の簡素化、外付け部品の低減、PCB 面積の削減が可能です。コンパクトな設計なので、標準的な表面実装機による自動組み立てに適しています。DCS-Control アーキテクチャと優れた負荷過渡性能を活用して、小さな出力コンデンサでも、厳密な出力電圧精度を実現しています。中負荷から重負荷では PWM モードで動作し、軽負荷時には自動的に省電力モードへ移行するため、負荷電流の全範囲にわたって高効率が維持されます。このデバイスは、強制的に PWM モードで動作させて、出力電圧リップルを最小化することもできます。I²C インターフェイスにより、出力電圧の調整、新しい設定ポイントへの遷移時の V_{OUT} ランプレートの設定、熱警告や電流制限フラグなどのステータス情報の読み出しの効果的な方法が提供されます。内蔵のソフトスタートにより、入力電源からの突入電流が減少します。過熱保護およびヒックアップ短絡保護機能により、堅牢で信頼性の高い設計を実現できます。

製品情報

部品番号 ⁽³⁾	出力電流	パッケージ ⁽¹⁾	本体サイズ (公称)
TPSM82864xx ⁽²⁾	4A	RCF (QFN-FCMOD, 15)	2.30mm × 3.00mm
TPSM82866xx	6A		

- 詳細については、[セクション 12](#) を参照してください。
- プレビュー情報 (量産データではありません)。
- [デバイスのオプション](#) の表を参照してください。



TPSM82866C の効率 (V_{IN} = 5.0V)



Table of Contents

1 特長	1	8.2 Register Address Byte.....	19
2 アプリケーション	1	8.3 V _{OUT} Register 1.....	19
3 概要	1	8.4 V _{OUT} Register 2.....	20
4 Device Options	3	8.5 CONTROL Register.....	21
5 Pin Configuration and Functions	3	8.6 STATUS Register.....	21
6 Specifications	4	9 Application and Implementation	22
6.1 Absolute Maximum Ratings.....	4	9.1 Application Information.....	22
6.2 ESD Ratings.....	4	9.2 Typical Application.....	22
6.3 Recommended Operating Conditions.....	4	9.3 Power Supply Recommendations.....	28
6.4 Thermal Information.....	5	9.4 Layout.....	28
6.5 Electrical Characteristics.....	6	10 Device and Documentation Support	31
6.6 I ² C Interface Timing Characteristics.....	7	10.1 Device Support.....	31
6.7 Typical Characteristics.....	9	10.2 Documentation Support.....	31
7 Detailed Description	10	10.3 ドキュメントの更新通知を受け取る方法.....	31
7.1 Overview.....	10	10.4 サポート・リソース.....	31
7.2 Functional Block Diagram.....	10	10.5 Trademarks.....	31
7.3 Feature Description.....	10	10.6 静電気放電に関する注意事項.....	31
7.4 Device Functional Modes.....	14	10.7 用語集.....	31
7.5 Programming.....	15	11 Revision History	31
8 Register Map	19	12 Mechanical, Packaging, and Orderable Information	32
8.1 Target Address Byte.....	19		

4 Device Options

ORDERABLE PART NUMBER ⁽¹⁾	OUTPUT CURRENT	OPERATING FREQUENCY	OUTPUT VOLTAGE RANGE	DEVICE HEIGHT
TPSM82864CA2PRCFR ⁽²⁾	4A	2.4MHz	0.4V – 1.675V	1.95mm
TPSM82864CA3PRCFR ⁽²⁾			0.8V – 3.35V	
TPSM82866CA2PRCFR ⁽²⁾	6A		0.4V – 1.675V	
TPSM82866CA3PRCFR	0.8V – 3.35V			

- (1) For more information, see [セクション 12](#).
(2) Preview information (not Production Data).

5 Pin Configuration and Functions

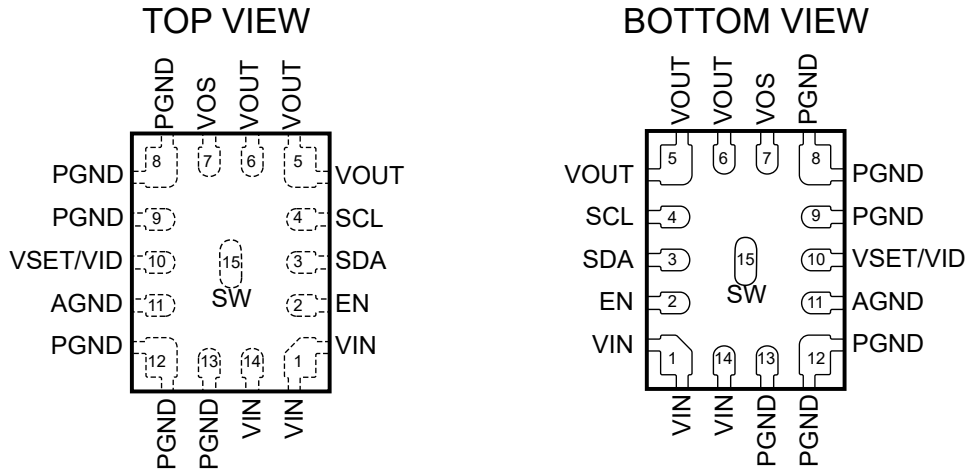


図 5-1. TPSM82864x, TPSM82866x - RCF (15 Pin) QFN-FCMOD

表 5-1. Pin Functions

PIN		TYPE ⁽¹⁾	DESCRIPTION
NAME	RCF		
AGND	11	P	Analog ground pin. Must be connected to a common GND plane.
EN	2	I	Device enable pin. To enable the device, this pin must be pulled high. Pulling this pin low disables the device. Do not leave floating.
SDA	3	I/O	I ² C serial data pin. Do not leave floating. Connect a pullup resistor to a logic high level. If the I ² C interface is not used, connect the pin to GND.
SCL	4	I	I ² C serial clock pin. Do not leave this pin floating. Connect a pullup resistor to a logic high level. If the I ² C interface is not used, connect the pin to GND.
VSET/MID	10	I	Connecting a resistor to GND selects one of the Start-up output voltages and I ² C device address. After start-up, the pin can be used to switch between the V _{OUT} registers for the output voltage selection. (Low = V _{OUT} Register 1; High = V _{OUT} Register 2). See セクション 7.4.3 for details.
PGND	8, 9, 12, 13	P	Power ground pin. Must be connected to common GND plane.
SW	15	O	Switch pin of the power stage. This pin can be left floating.
VIN	1, 14	P	Power supply input voltage pin
VOS	7	I	Output voltage sense pin. This pin must be directly connected to the output capacitor.
VOUT	5, 6	P	Output voltage pin

- (1) I = Input, O = Output, P = Power

6 Specifications

6.1 Absolute Maximum Ratings

Over operating free-air temperature range (unless otherwise noted) ⁽¹⁾

		MIN	MAX	UNIT
Voltage ⁽²⁾	VIN, EN, VOS, FB, PG, VSET/VID	−0.3	6	V
	SW (DC), VOUT	−0.3	VIN + 0.3	
	SW (AC, less than 10ns) ⁽³⁾	−2.5	10	
ISINK_SDA	Sink current at SDA		2	mA
TJ	Junction temperature	−40	125	°C
Tstg	Storage temperature	−40	125	°C

- (1) Operation outside the Absolute Maximum Ratings may cause permanent device damage. Absolute Maximum Ratings do not imply functional operation of the device at these or any other conditions beyond those listed under Recommended Operating Conditions. If used outside the Recommended Operating Conditions but within the Absolute Maximum Ratings, the device may not be fully functional, and this may affect device reliability, functionality, performance, and shorten the device lifetime.
- (2) All voltage values are with respect to network ground terminal.
- (3) While switching.

6.2 ESD Ratings

			VALUE	UNIT
V(ESD)	Electrostatic discharge	Human body model (HBM), per ANSI/ESDA/JEDEC JS-001 ⁽¹⁾	±2000	V
		Charged-device model (CDM), per ANSI/ESDA/JEDEC JS-002 ⁽²⁾	±500	

- (1) JEDEC document JEP155 states that 500V HBM allows safe manufacturing with a standard ESD control process.
- (2) JEDEC document JEP157 states that 250V CDM allows safe manufacturing with a standard ESD control process.

6.3 Recommended Operating Conditions

		MIN	NOM	MAX	UNIT
VIN	Supply voltage range	2.4		5.5	V
VOUT	Output voltage range	0.6		VIN or 3.35V	V
tF_VIN	Falling transition time at VIN ⁽¹⁾			10	mV/μs
IOUT	Output current, TPSM82864xx			4	A
	Output current, TPSM82866xx			6	
RVSET	Nominal resistance range for external voltage selection resistor (E96 resistor series)	10		249	kΩ
	External voltage selection resistor tolerance			1%	
	External voltage selection resistor temperature coefficient			±200	ppm/°C
TJ	Junction temperature	−40		125	°C

- (1) The falling slew rate of VIN must be limited if VIN goes below VUVLO (see [Power Supply Recommendations](#)).

6.4 Thermal Information

THERMAL METRIC ⁽¹⁾		TPSM8286x	TPSM8286x	UNIT
		15 PINS	15 PINS	
		RCF JEDEC 51-7	RCF EVM	
$R_{\theta JA}$	Junction-to-ambient thermal resistance	66.4	29.9	°C/W
$R_{\theta JC(top)}$	Junction-to-case (top) thermal resistance	31.8	n/a ⁽²⁾	°C/W
$R_{\theta JB}$	Junction-to-board thermal resistance	19.5	n/a ⁽²⁾	°C/W
Ψ_{JT}	Junction-to-top characterization parameter	(-2.2) ⁽³⁾	(-4.2) ⁽³⁾	°C/W
Ψ_{JB}	Junction-to-board characterization parameter	18.8	15.5	°C/W

- (1) For more information about thermal metrics, see the [Semiconductor and IC Package Thermal Metrics](#) application note.
 (2) Not applicable to an EVM.
 (3) The junction temperature is lower than the inductor temperature leading to a temperature increase towards the top of the package

6.5 Electrical Characteristics

$T_J = -40^{\circ}\text{C}$ to 125°C , and $V_{IN} = 2.4\text{V}$ to 5.5V . Typical values are at $T_J = 25^{\circ}\text{C}$ and $V_{IN} = 5\text{V}$, unless otherwise noted.

PARAMETER		TEST CONDITIONS	MIN	TYP	MAX	UNIT
SUPPLY						
I_{Q_VIN}	Quiescent current into VIN pin	EN = High, no load, device not switching		4	10	μA
I_{Q_VOS}	Quiescent current into VOS pin	EN = High, no load, device not switching, $V_{VOS} = 1.8\text{V}$		18		μA
I_{SD}	Shutdown current	EN = Low, $T_J = -40^{\circ}\text{C}$ to 85°C		0.24	1	μA
V_{UVLO}	Undervoltage lockout threshold	V_{IN} rising	2.2	2.3	2.4	V
		V_{IN} falling	2.1	2.2	2.3	V
T_{JW}	Thermal warning threshold	T_J rising		130		$^{\circ}\text{C}$
	Thermal warning hysteresis	T_J falling		20		$^{\circ}\text{C}$
T_{JSD}	Thermal shutdown threshold	T_J rising		150		$^{\circ}\text{C}$
	Thermal shutdown hysteresis	T_J falling		20		$^{\circ}\text{C}$
LOGIC INTERFACE						
V_{IH}	High-level input threshold voltage at EN, SCL, SDA and VSET/VID		0.84			V
V_{IL}	Low-level input threshold voltage at EN, SCL, SDA and VSET/VID				0.4	V
$I_{SCL,LKG}$	Input leakage current into SCL pin			0.01	0.8	μA
$I_{SDA,LKG}$	Input leakage current into SDA pin			0.01	0.1	μA
$I_{EN,LKG}$	Input leakage current into EN pin			0.01	0.1	μA
C_{SCL}	Parasitic capacitance at SCL			1		pF
C_{SDA}	Parasitic capacitance at SDA			2.4		pF
START-UP, POWER GOOD						
t_{Delay}	Enable delay time	Time from EN high to device starts switching with a $249\text{k}\Omega$ resistor connected between VSET/VID and GND	420	650	1100	μs
OUTPUT						
V_{OUT}	Output voltage accuracy	FPWM, no Load, $T_J = 0^{\circ}\text{C}$ to 85°C	-1		1	%
		FPWM, no Load	-2		2	%
$I_{VOS,LKG}$	Input leakage current into VOS pin	EN = Low, Output discharge disabled, $V_{VOS} = 1.8\text{V}$		0.2	2.5	μA
R_{DIS}	Output discharge resistor at VOS pin			3.5		Ω
	Load regulation	$V_{OUT} = 0.9\text{V}$, FPWM		0.04		%/A
POWER SWITCH						
R_{DP}	Dropout resistance	100% mode. $V_{IN} = 3.3\text{V}$, $T_J = 25^{\circ}\text{C}$		26		m Ω
I_{LIM}	High-side FET forward current limit	TPSM82864xx	5	5.5	6	A
		TPSM82866xx	7	7.9	9	A
	Low-side FET forward current limit	TPSM82864xx		4.5		A
		TPSM82866xx		6.5		A
	Low-side FET negative current limit		-3		A	
f_{SW}	PWM switching frequency	$I_{OUT} = 1\text{A}$, $V_{OUT} = 0.9\text{V}$		2.4		MHz

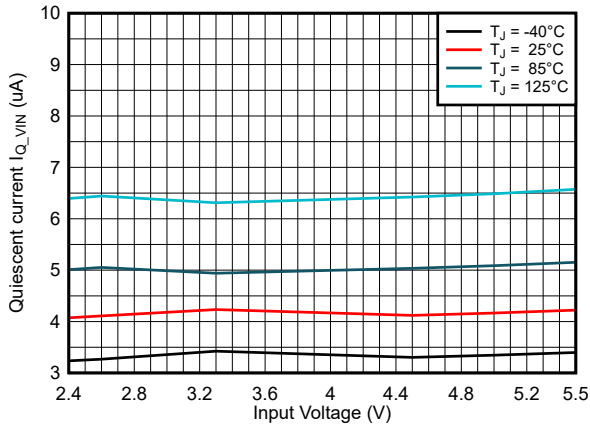
6.6 I²C Interface Timing Characteristics

PARAMETER		TEST CONDITIONS	MIN	MAX	UNIT
f _(SCL)	SCL clock frequency	Standard mode		100	kHz
		Fast mode		400	kHz
		Fast mode plus		1	MHz
		High-speed mode (write operation), C _B – 100pF max		3.4	MHz
		High-speed mode (read operation), C _B – 100pF max		3.4	MHz
		High-speed mode (write operation), C _B – 400pF max		1.7	MHz
		High-speed mode (read operation), C _B – 400pF max		1.7	MHz
t _{BUF}	Bus free time between a STOP and START condition	Standard mode	4.7		μs
		Fast mode	1.3		μs
		Fast mode plus	0.5		μs
t _{HD} , t _{STA}	Hold time (repeated) START condition	Standard mode	4		μs
		Fast mode	600		ns
		Fast mode plus	260		ns
		High-speed mode	160		ns
t _{LOW}	LOW period of the SCL clock	Standard mode	4.7		μs
		Fast mode	1.3		μs
		Fast mode plus	0.5		μs
		High-speed mode, C _B – 100pF max	160		ns
		High-speed mode, C _B – 400pF max	320		ns
t _{HIGH}	HIGH period of the SCL clock	Standard mode	4		μs
		Fast mode	600		ns
		Fast mode plus	260		ns
		High-speed mode, C _B – 100pF max	60		ns
		High-speed mode, C _B – 400pF max	120		ns
t _{SU} , t _{STA}	Setup time for a repeated START condition	Standard mode	4.7		μs
		Fast mode	600		ns
		Fast mode plus	260		ns
		High-speed mode	160		ns
t _{SU} , t _{DAT}	Data setup time	Standard mode	250		ns
		Fast mode	100		ns
		Fast mode plus	50		ns
		High-speed mode	10		ns
t _{HD} , t _{DAT}	Data hold time	Standard mode	0	3.45	μs
		Fast mode	0	0.9	μs
		Fast mode plus	0		μs
		High-speed mode, C _B – 100pF max	0	70	ns
		High-speed mode, C _B – 400pF max	0	150	ns

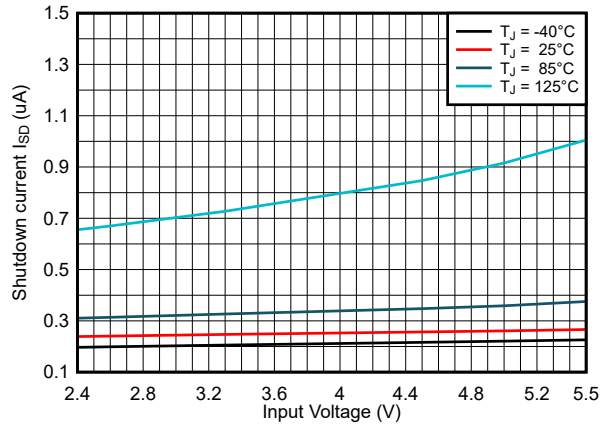
6.6 I²C Interface Timing Characteristics (続き)

PARAMETER		TEST CONDITIONS	MIN	MAX	UNIT
t _{RCL}	Rise time of SCL signal	Standard mode		1000	ns
		Fast mode	20 + 0.1 C _B	300	ns
		Fast mode plus		120	ns
		High-speed mode, C _B – 100pF max	10	40	ns
		High-speed mode, C _B – 400pF max	20	80	ns
t _{RCL1}	Rise time of SCL signal after a repeated START condition and after an acknowledge BIT	Standard mode	20 + 0.1 C _B	1000	ns
		Fast mode	20 + 0.1 C _B	300	ns
		Fast mode plus		120	ns
		High-speed mode, C _B – 100pF max	10	80	ns
		High-speed mode, C _B – 400pF max	20	160	ns
t _{FCL}	Fall time of SCL signal	Standard mode	20 + 0.1 C _B	300	ns
		Fast mode		300	ns
		Fast mode plus		120	ns
		High-speed mode, C _B – 100pF max	10	40	ns
		High-speed mode, C _B – 400pF max	20	80	ns
t _{RDA}	Rise time of SDA signal	Standard mode		1000	ns
		Fast mode	20 + 0.1 C _B	300	ns
		Fast mode plus		120	ns
		High-speed mode, C _B – 100pF max	10	80	ns
		High-speed mode, C _B – 400pF max	20	160	ns
t _{FDA}	Fall time of SDA signal	Standard mode		300	ns
		Fast mode	20 + 0.1 C _B	300	ns
		Fast mode plus		120	ns
		High-speed mode, C _B – 100pF max	10	80	ns
		High-speed mode, C _B – 400pF max	20	160	ns
t _{SU} , t _{STO}	Setup time of STOP condition	Standard mode	4		μs
		Fast mode	600		ns
		Fast mode plus	260		ns
		High-Speed mode	160		ns
C _B	Capacitive load for SDA and SCL	Standard mode		400	pF
		Fast mode		400	pF
		Fast mode plus		550	pF
		High-Speed mode		400	pF

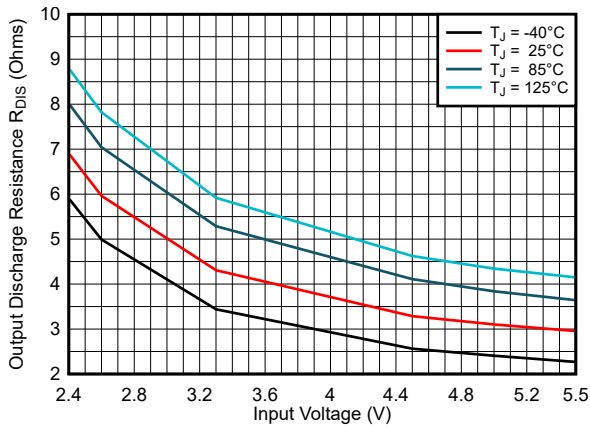
6.7 Typical Characteristics



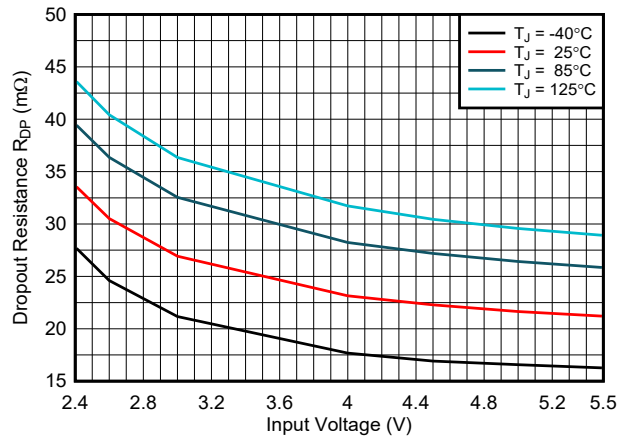
6-1. Quiescent Current into V_{IN} I_{Q_VIN}



6-2. Shutdown Current I_{SD}



6-3. Output Discharge Resistance R_{DIS}



6-4. Dropout Resistance R_{DP}

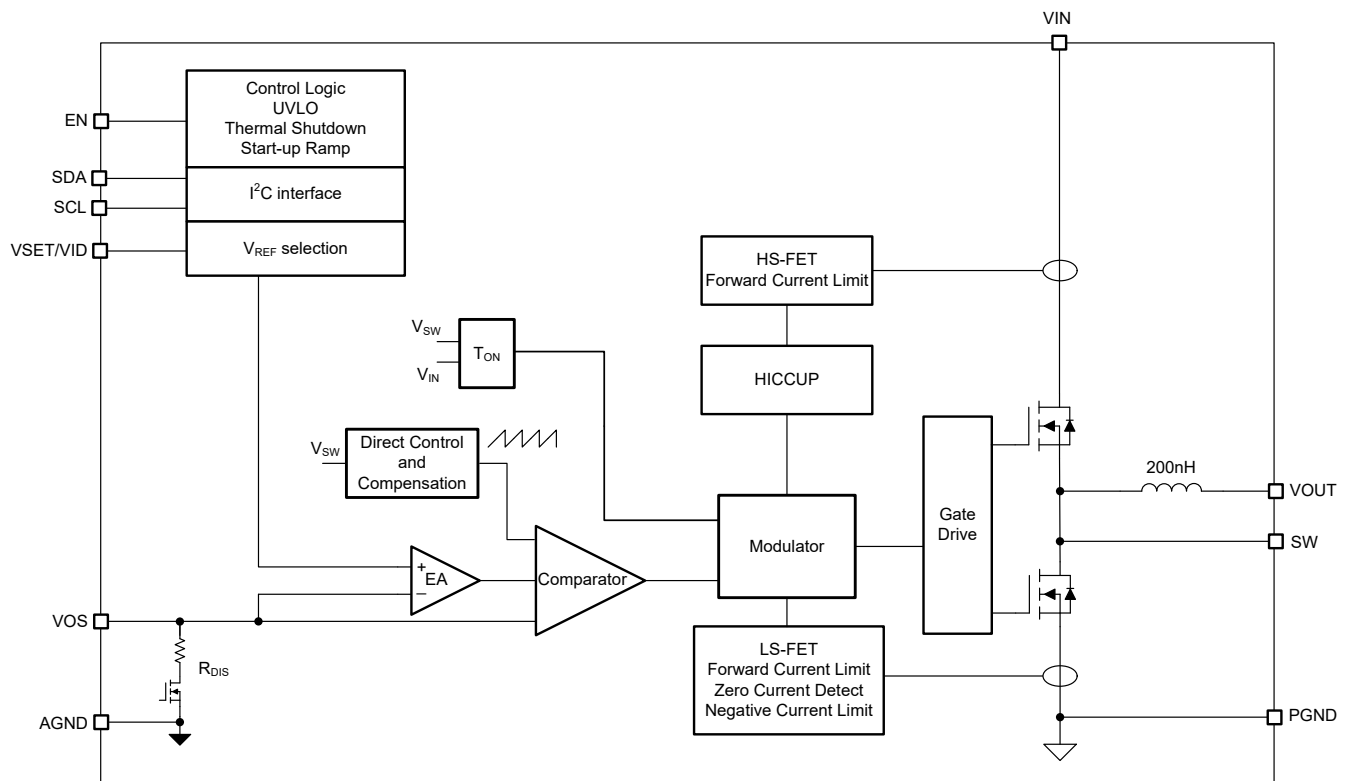
7 Detailed Description

7.1 Overview

The TPSM8286xx synchronous, step-down converter power module uses the DCS-Control (Direct Control with seamless transition into power save mode) topology. This topology is an advanced regulation topology that combines the advantages of hysteretic, voltage, and current mode control. The DCS-Control topology operates in PWM (pulse width modulation) mode for medium-to-heavy load conditions and in PSM (power save mode) at light load currents. In PWM, the converter operates with the nominal switching frequency of 2.4MHz, having a controlled frequency variation over the input voltage range. As the load current decreases, the converter enters power save mode, reducing the switching frequency and minimizing the quiescent current of the IC to achieve high efficiency over the entire load current range. DCS-Control supports both operation modes using a single building block and, therefore, has a seamless transition from PWM to PSM without effects on the output voltage. The TPSM8286xx offers excellent DC voltage regulation and load transient regulation, combined with low output voltage ripple, minimizing interference with RF circuits.

The TPSM8286xxxP versions in the RCF package use MagPack technology to deliver the highest-performance power module design. Leveraging our proprietary integrated-magnetics MagPack packaging technology, these power modules deliver industry-leading power density, high efficiency, good thermal performance, ease of use, and reduced EMI emissions.

7.2 Functional Block Diagram



7.3 Feature Description

7.3.1 Power Save Mode

As the load current decreases, the device seamlessly enters power save mode (PSM) operation. In PSM, the converter operates with a reduced switching frequency and a minimum quiescent current to maintain high efficiency. Power save mode is based on a fixed on-time architecture, as shown in 式 1. The inductance used in the TPSM8286xx is 200nH typical.

$$t_{ON} = \frac{V_{OUT}}{V_{IN} \times f_{SW}} \quad (1)$$

For very small output voltages, an absolute minimum on time of approximately 50ns is kept to limit switching losses. The operating frequency is thereby reduced from the nominal value, which keeps efficiency high. The switching frequency in PSM is estimated as:

$$f_{PSM} = \frac{2 \times I_{OUT}}{t_{ON}^2 \times \frac{V_{IN}}{V_{OUT}} \times \frac{V_{IN} - V_{OUT}}{L}} \quad (2)$$

The load current at which PSM is entered is at one half of the ripple current of the inductor and can be estimated as:

$$I_{Load(PSM - entry)} = \frac{V_{IN} \times t_{ON}}{2} \times \frac{1 - \frac{V_{OUT}}{V_{IN}}}{L} \quad (3)$$

In power save mode, the output voltage rises slightly above the nominal output voltage. This effect is minimized by increasing the output capacitance.

7.3.2 Forced PWM Mode

When setting the Enable FPWM Mode bit = 1 in the Control register, the device enters forced PWM (FPWM) mode and operates with a constant switching frequency over the entire load range, even at very light loads. This action reduces the output voltage ripple and allows simple filtering of the switching frequency for noise-sensitive applications but lowers efficiency at light loads.

7.3.3 Optimized Transient Performance from PWM to PSM Operation

For most converters, the load transient response in PWM mode is improved compared to PSM, because the converter reacts faster on the load step and actively sinks energy on the load release. As an additional feature, the TPSM8286xx automatically stays in PWM mode for 128 cycles after a heavy load release to bring the output voltage back to the regulation level faster. After these 128 cycles of PWM mode, the device automatically returns to PSM (if the Enable FPWM Mode bit = 0). See [Figure 7-1](#). Without this optimization, the output voltage overshoot is higher.

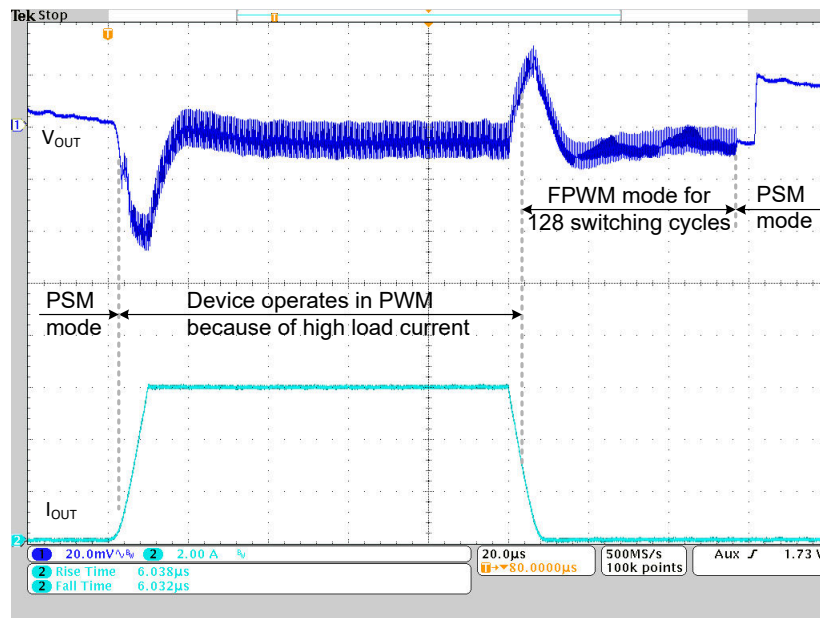


図 7-1. Optimized Transient Performance from PWM to PSM

7.3.4 Low Dropout Operation (100% Duty Cycle)

The device offers a low dropout operation by entering 100% duty cycle mode if the input voltage comes close to the target output voltage. In this mode, the high-side MOSFET switch is constantly turned on. This constant is particularly useful in battery-powered applications to achieve the longest operation time by taking full advantage of the whole battery voltage range. The minimum input voltage to maintain a minimum output voltage is given by:

$$V_{IN (min)} = V_{OUT (min)} + I_{OUT (max)} \times R_{DP} \quad (4)$$

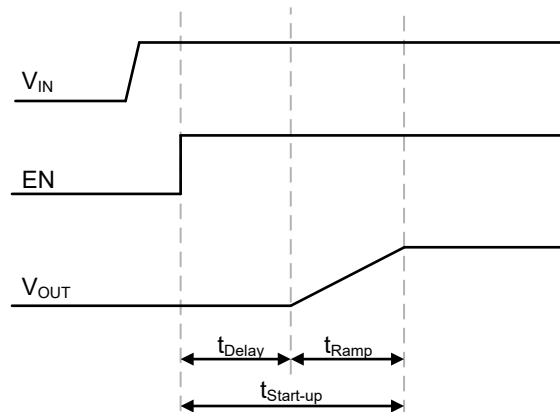
where

- $V_{OUT (min)}$ = Minimum output voltage the load can accept
- $I_{OUT (max)}$ = Maximum output current
- R_{DP} = Resistance from VIN to VOUT (high-side $R_{DS(on)}$ + R_{DC} of the inductor)

7.3.5 Enable and Soft-Start Ramp

After enabling the device, there is a 650 μ s enable delay (t_{Delay}) before the I²C interface is active. The t_{Delay} time varies with the VSET/MODE resistor used and is longest with a resistance of 249k Ω . After the enable delay, all registers can be read and written by the I²C interface. The [Voltage Ramp Speed](#) bits in the Control register set the slope of the Output Voltage soft start ramp (default = 1mV / μ s). This action avoids excessive inrush current and creates a smooth output voltage ramp up. This action also prevents excessive voltage drop of batteries or prior voltage regulators which have a high internal impedance.

☒ 7-2 shows the start-up sequence.



☒ 7-2. Start-Up Sequence

The device is able to start into a prebiased output capacitor. The device starts with the applied bias voltage and ramps the output voltage to the nominal value.

7.3.6 Switch Current Limit and HICCUP Short-Circuit Protection

The switch current limit prevents the device from high inductor current and from drawing excessive current from the battery or input voltage rail. Excessive current can occur with a heavy load or shorted output circuit condition. If the inductor current reaches the threshold I_{LIM} , cycle by cycle, the high-side MOSFET is turned off and the low-side MOSFET is turned on until the inductor current ramps down to the low-side MOSFET current limit.

When the high-side MOSFET current limit is triggered 32 times, the device stops switching. The device then automatically re-starts with soft start after a typical delay time of 128 μ s has passed. The device repeats this mode until the high load condition disappears. This HICCUP short-circuit protection reduces the current consumed from the input supply during an overload condition. ☒ 9-25 shows the hiccup short-circuit protection.

The HICCUP can be disabled by the CONTROL register bit Enable HICCUP. Disabling HICCUP changes the overcurrent protection to latching protection. The device stops switching after the high-side MOSFET current

limit is triggered 32 times. Toggling the EN pin, removing and reapplying the input voltage, or writing to the CONTROL register bit Software Enable Device unlatches the device.

The low-side MOSFET also contains a negative current limit to prevent excessive current from flowing back through the inductor to the input. If the low-side sinking current limit is exceeded, the low-side MOSFET is turned off. In this scenario, both MOSFETs are off until the start of the next cycle. The negative current limit is only active in forced PWM mode.

7.3.7 Undervoltage Lockout

To avoid misoperation of the device at low input voltages, undervoltage lockout (UVLO) disables the device when the input voltage is lower than V_{UVLO} . When the input voltage recovers, the device automatically returns to operation with soft start. The UVLO bit in the STATUS Register is set when the input voltage is below the UVLO falling threshold.

In case the input voltage falls below 1.8V (typical), all registers are reset.

7.3.8 Thermal Warning and Shutdown

The module features a thermal warning indicator bit in the Status register. This bit is set to 1 if the junction temperature exceeds the rising T_{JW} temperature and is reset when the junction temperature falls below the threshold by the hysteresis. The device continues operating.

In case the junction temperature exceeds T_{JSD} , the device goes into thermal shutdown, stops switching, and activates the output voltage discharge (in case this is enabled). When the device temperature falls below the threshold by the hysteresis, the device returns to normal operation automatically with soft start.

7.4 Device Functional Modes

7.4.1 Enable and Disable (EN)

The device is enabled by setting the EN pin to a logic high. Accordingly, shutdown mode is forced if the EN pin is pulled low. In shutdown mode, the internal power switches as well as the entire control circuitry are turned off and all the registers are reset to the default values, except for the Enable Output Discharge bit. An internal switch smoothly discharges the output through the VOS pin if the Enable Output Discharge bit is set to 1.

In shutdown mode (EN = Low), the I²C interface is disabled to reduce the current consumption of the module. Thus no registers can be accessed.

The typical enable threshold value of the EN pin is 0.66V for rising input signals and the typical shutdown threshold is 0.52V for falling input signals. Do not leave the EN pin floating.

The device can also be enabled or disabled by setting the Software Enable Device bit in the CONTROL register while EN = High. After being disabled or enabled by this bit, the device stops switching and initiates a new start-up ramp. There is no additional T_{Delay} time and the registers are not reset.

7.4.2 Output Discharge

The purpose of the output discharge function is to make sure of a defined down-ramp of the output voltage when the device is disabled and to keep the output voltage close to 0V. The output discharge is active when the enable output discharge bit is set to 1 and the EN pin is pulled low, when the Input voltage is below the UVLO threshold or during thermal shutdown. The discharge is active down to an input voltage of 1.6V (typical). The enable output discharge bit is reset on the rising edge of the EN pin.

7.4.3 Start-Up Output Voltage and I²C Target Address Selection (VSET)

During the enable delay (t_{Delay}), the start-up output voltage and device I²C target address are set by an external resistor connected to the VSET/VID pin through an internal R2D (resistor to digital) converter. The device V_{OUT} Register 1 is also set according to the start-up voltage. 表 7-1 shows the allowed resistor values. The allowed resistor tolerance is shown in [セクション 6.3](#).

表 7-1. Start-up Output Voltage and I²C Target Address Options

RESISTOR (E96 SERIES, ±1% ACCURACY) AT VSET/VID	TPSM8286xCA2 START-UP OUTPUT VOLTAGE	TPSM8286xCA3 START-UP OUTPUT VOLTAGE	I ² C TARGET ADDRESS
249kΩ	1.15V	2.30V	1000 110 (0x46)
205kΩ	1.10V	2.20V	1000 101 (0x45)
162kΩ	1.05V	2.10V	1000 100 (0x44)
133kΩ	1.00V	2.00V	1000 011 (0x43)
105kΩ	0.95V	1.90V	1000 010 (0x42)
86.6kΩ	0.90V	1.80V	1000 001 (0x41)
68.1kΩ	0.85V	1.70V	1001 000 (0x48)
56.2kΩ	0.80V	1.60V	1001 001 (0x49)
44.2kΩ	0.75V	1.50V	1001 010 (0x4A)
36.5kΩ	0.70V	1.40V	1001 011 (0x4B)
28.7kΩ	0.65V	1.30V	1001 100 (0x4C)
23.7kΩ	0.60V	1.20V	1001 101 (0x4D)
18.7kΩ	0.55V	1.10V	1001 110 (0x4E)
15.4kΩ	0.50V	1.00V	1001 111 (0x4F)
12.1kΩ	0.45V	0.90V	1000 000 (0x40)

表 7-1. Start-up Output Voltage and I²C Target Address Options (続き)

RESISTOR (E96 SERIES, ±1% ACCURACY) AT VSET/VID	TPSM8286xCA2 START-UP OUTPUT VOLTAGE	TPSM8286xCA3 START-UP OUTPUT VOLTAGE	I ² C TARGET ADDRESS
10kΩ or lower	0.40V	0.80V	1000 111 (0x47)

The R2D converter has an internal current source, which applies current through the external resistor, and an internal ADC, which reads back the resulting voltage level. Depending on the level, the correct start-up output voltage and I²C target address are set. After this R2D conversion is finished, the current source is turned off to avoid current flowing through the external resistor. Make sure that there is no additional current path or capacitance greater than 30pF from this pin to GND during R2D conversion. Otherwise, a false value is set.

During the ramp-up period (t_{Ramp}), the output voltage ramps to the target value set by VSET first, then ramps up or down to the new value when the value of the output register is changed by I²C interface commands.

7.4.4 Select Output Voltage Registers (VID)

After the start-up period ($t_{Startup}$), the output voltage can be selected between two output voltage registers by the VID pin. When VID is pulled low, the output voltage is set by 表 8-2. When VID is pulled high, the output voltage is set by 表 8-3. This is also called dynamic voltage scaling (DVS). If the VID function is not used, the VSET resistor keeps the VSET/VID pin low and the V_{OUT} Register 1 sets the Output voltage.

During an output voltage change through I²C or the VSET/VID pin, the device can be configured to operate in FPWM by setting the Enable FPWM Mode during Output Voltage Change bit in CONTROL register to 1. In FPWM Mode, the ramp-up and ramp-down speeds are controlled by the device. In PSM Mode the ramp-up speed is controlled by the device, but the ramp-down speed is determined by the load current and the output capacitance. The output voltage change speed is set by the Voltage Ramp Speed bit.

7.5 Programming

7.5.1 Serial Interface Description

I²C is a 2-wire serial interface developed by Philips Semiconductor, now NXP Semiconductors. The bus consists of a data line (SDA) and a clock line (SCL) with pullup structures. When the bus is *idle*, both the SDA and SCL lines are pulled high. All the I²C-compatible devices connect to the I²C bus through open-drain I/O pins, SDA and SCL. A *controller* device, usually a microcontroller or a digital signal processor, controls the bus. The controller is responsible for generating the SCL signal and device addresses. The controller also generates specific conditions that indicate the START and STOP of data transfer. A *target* device receives or transmits data on the bus under control of the controller device, or both.

The TPSM8286xx module works as a *target* and supports the following data transfer *modes*, as defined in the I²C-Bus Specification: standard mode (100kbps) and fast mode (400kbps), fast mode plus (1Mbps) and high-speed mode (3.4Mbps). The interface adds flexibility to the power supply solution, enabling most functions to be programmed to new values depending on the instantaneous application requirements. Register contents remain intact as long as the input voltage remains above 1.8V.

The data transfer protocol for standard and fast modes is exactly the same, therefore, standard and fast modes are referred to as F/S-mode in this document. The protocol for high-speed mode is different from F/S-mode, and is referred to as HS mode.

TI recommends that the I²C controller initiates a STOP condition on the I²C bus after the initial power up of the SDA and SCL pullup voltages to make sure of a reset of the I²C engine.

7.5.2 Standard-Mode, Fast-Mode, and Fast-Mode Plus Protocol

The controller initiates data transfer by generating a start condition. The start condition is when a high-to-low transition occurs on the SDA line while SCL is high, as shown in 図 7-3. All I²C-compatible devices recognize a start condition.

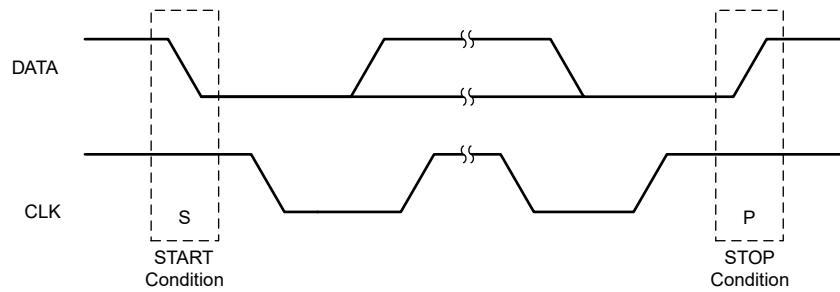


図 7-3. START and STOP Conditions

The controller then generates the SCL pulses, and transmits the 7-bit address and the read/write direction bit R/\bar{W} on the SDA line. During all transmissions, the controller makes sure that data is valid. A valid data condition requires the SDA line to be stable during the entire high period of the clock pulse (see 図 7-4). All devices recognize the address sent by the controller and compare the address to the internal fixed addresses. Only the target device with a matching address generates an acknowledge (see 図 7-5) by pulling the SDA line low during the entire high period of the ninth SCL cycle. Upon detecting this acknowledge, the controller knows that a communication link with the target has been established.

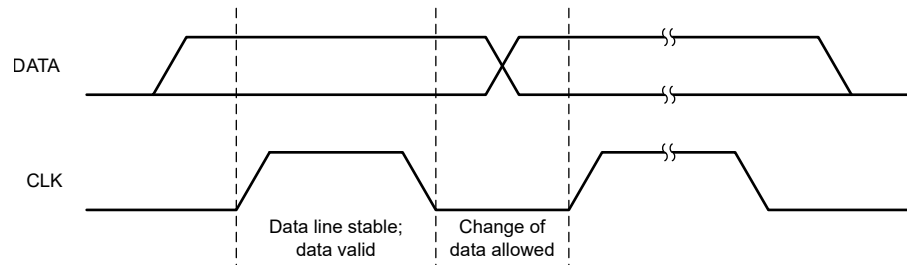
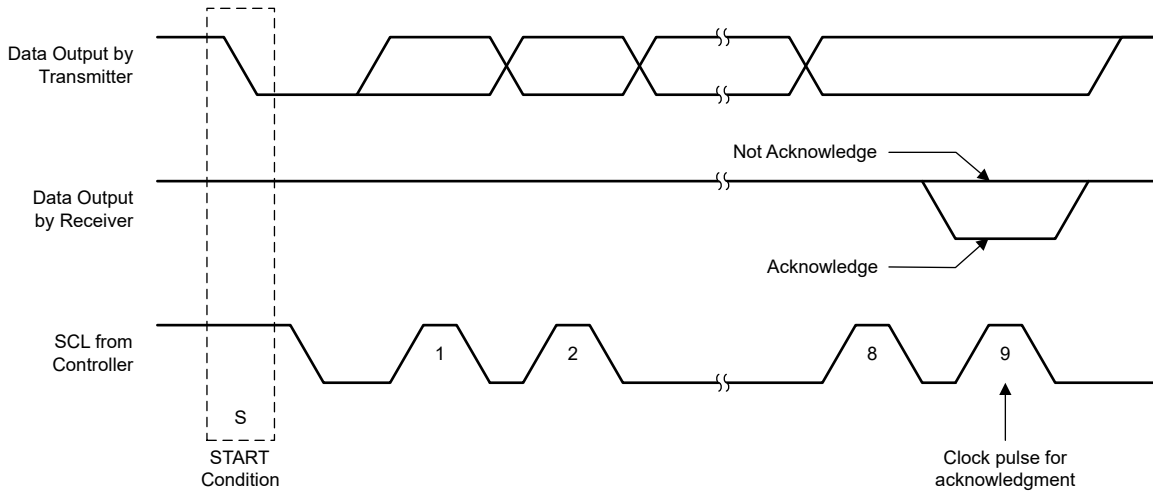


図 7-4. Bit Transfer on the Serial Interface

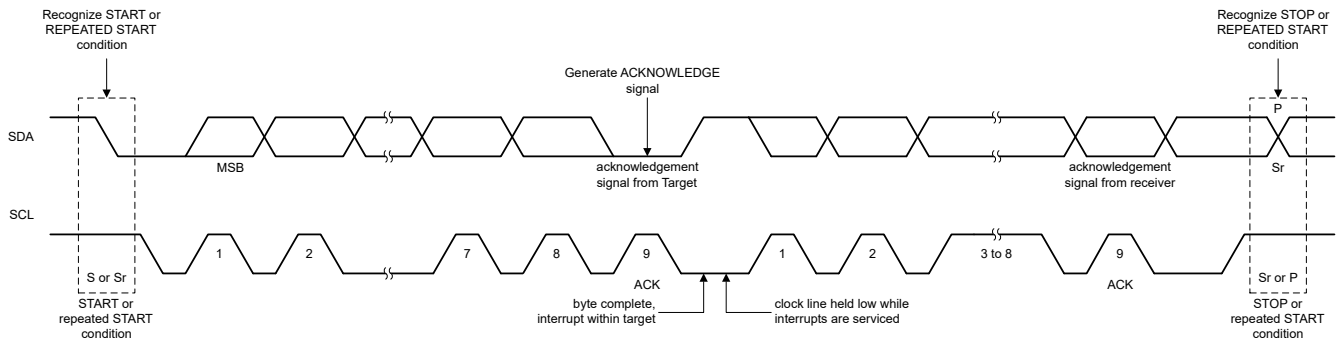
The controller generates further SCL cycles to either transmit data to the target (R/\bar{W} bit 0) or receive data from the target (R/\bar{W} bit 1). In either case, the receiver needs to acknowledge the data sent by the transmitter. So an acknowledge signal can either be generated by the controller or by the target, depending on which one is the receiver. 9-bit valid data sequences consisting of 8-bit data and 1-bit acknowledge can continue as long as necessary.

To signal the end of the data transfer, the controller generates a stop condition by pulling the SDA line from low to high while the SCL line is high (see 図 7-3). This action releases the bus and stops the communication link with the addressed target. All I^2C -compatible devices must recognize the stop condition. Upon the receipt of a stop condition, all devices know that the bus is released, and the devices wait for a start condition followed by a matching address.

Attempting to read data from register addresses not listed in this section results in 0x00 being read out.



7-5. Acknowledge on the I²C Bus



7-6. Bus Protocol

7.5.3 HS-Mode Protocol

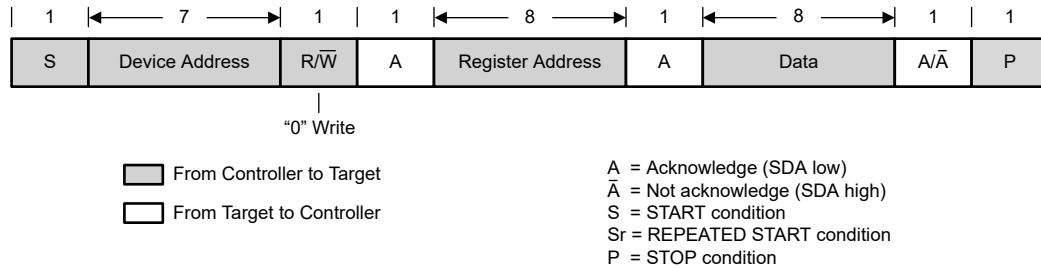
The controller generates a start condition followed by a valid serial byte containing HS controller code 00001XXX. This transmission is made in F/S-mode at no more than 400kbps. No device is allowed to acknowledge the HS controller code, but all devices must recognize the HS controller code and switch the internal setting to support 3.4Mbps operation.

The controller then generates a *repeated start condition* (a repeated start condition has the same timing as the start condition). After this repeated start condition, the protocol is the same as F/S-mode, except that transmission speeds up to 3.4Mbps are allowed. A stop condition ends the HS-mode and switches all the internal settings of the target devices to support the F/S-mode. Instead of using a stop condition, repeated start conditions must be used to secure the bus in HS-mode.

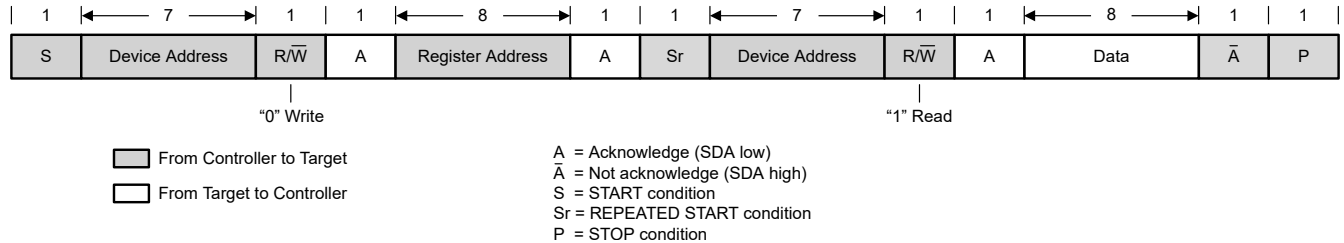
Attempting to read data from register addresses not listed in this section results in 0x00 being read out.

7.5.4 I²C Update Sequence

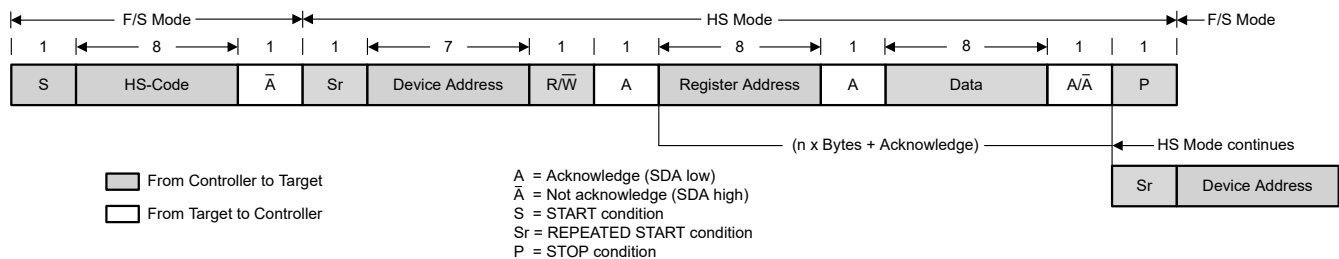
The sequence requires a start condition, a valid I²C target address, a register address byte, and a data byte for a single update. After the receipt of each byte, the device acknowledges by pulling the SDA line low during the high period of a single clock pulse. A valid I²C address selects the device. The device performs an update on the falling edge of the acknowledge signal that follows the LSB byte.



7-7. Write Data Transfer Format in Standard Modes, Fast Modes, and Fast-Plus Modes



7-8. Read Data Transfer Format in Standard Modes, Fast Modes, and Fast-Plus Modes



7-9. Data Transfer Format in HS Mode

7.5.5 I²C Register Reset

The I²C registers can be reset by:

- Pulling the input voltage below 1.8V (typical)
- A high-to-low transition on EN
- Setting the Reset bit in the CONTROL register. When Reset is set to 1, all registers are reset to the default values and a new start-up is begun immediately. After t_{Delay} , the I²C registers can be programmed again.

8 Register Map

表 8-1. Register Map

REGISTER ADDRESS (HEX)	REGISTER NAME	FACTORY DEFAULT (HEX)	DESCRIPTION
0x01	V _{OUT} Register 1	Set through VSET/VID pin	Sets the target output voltage when VSET/VID is low
0x02	V _{OUT} Register 2	0x64	Sets the target output voltage when VSET/VID is high
0x03	CONTROL Register	0x6F	Sets miscellaneous configuration bits
0x05	STATUS Register	0x00	Returns status flags

8.1 Target Address Byte

7	6	5	4	3	2	1	0
1	x	x	x	x	x	x	R/W

The target address byte is the first byte received following the START condition from the controller device. The target I²C address is assigned by the VSET/VID resistor; see 表 7-1.

8.2 Register Address Byte

7	6	5	4	3	2	1	0
0	0	0	0	0	D2	D1	D0

Following the successful acknowledgment of the target address, the bus controller sends a byte to the device, which contains the address of the register to be accessed.

8.3 V_{OUT} Register 1

表 8-2. V_{OUT} Register 1 Description

REGISTER ADDRESS 0X01 READ/WRITE				
BIT	FIELD	VALUE ⁽¹⁾ (HEX)	TPSM8286xCA2 OUTPUT VOLTAGE (TYPICAL)	TPSM8286xCA3 OUTPUT VOLTAGE (TYPICAL)
7:0	VO1_SET	0x00	400mV	800mV
		0x01	405mV	810mV
		...		
		0x64	900mV	1800mV
		...		
		0xFE	1670mV	3340mV
		0xFF	1675mV	3350mV

(1) The start-up value is assigned by the VSET/VID resistor; see 表 7-1.

8.4 V_{OUT} Register 2

表 8-3. V_{OUT} Register 2 Description

REGISTER ADDRESS 0X02 READ/WRITE				
BIT	FIELD	VALUE (HEX)	TPSM8286xCA2 OUTPUT VOLTAGE (TYPICAL)	TPSM8286xCA3 OUTPUT VOLTAGE (TYPICAL)
7:0	VO2_SET	0x00	400mV	800mV
		0x01	405mV	810mV
		...		
		0x64	900mV (default value)	1800mV (default value)
		...		
		0xFE	1670mV	3340mV
		0xFF	1675mV	3350mV

8.5 CONTROL Register

表 8-4. CONTROL Register Description

REGISTER ADDRESS 0X03 READ/WRITE				
BIT	FIELD	TYPE	DEFAULT	DESCRIPTION
7	Reset	R/W	0	1 - Reset all registers to default.
6	Enable FPWM Mode during Output Voltage Change	R/W	1	0 - Keep the current mode status during output voltage change 1 - Force the device in FPWM during output voltage change.
5	Software Enable Device	R/W	1	0 - Disable the device. All registers values are still kept. 1 - Re-enable the device with a new start-up without the t_{Delay} period.
4	Enable FPWM Mode	R/W	0	0 - Set the device in power save mode at light loads. 1 - Set the device in forced PWM mode at light loads.
3	Enable Output Discharge	R/W	1	0 - Disable output discharge 1 - Enable output discharge
2	Enable HICCUP	R/W	1	0 - Disable HICCUP. Enable latching protection. 1 - Enable HICCUP. Disable latching protection.
0:1	Voltage Ramp Speed	R/W	11	00 - 20mV/ μ s (0.25 μ s/step) 01 - 10mV/ μ s (0.5 μ s/step) 10 - 5mV/ μ s (1 μ s/step) 11 - 1mV/ μ s (5 μ s/step)

8.6 STATUS Register

表 8-5. STATUS Register Description

REGISTER ADDRESS 0X05 READ ONLY ⁽¹⁾				
BIT	FIELD	TYPE	DEFAULT	DESCRIPTION
7:5	Reserved			
4	Thermal Warning	R	0	1: Junction temperature is higher than 130°C.
3	HICCUP	R	0	1: Device has HICCUP status once.
2	Reserved			
1	Reserved			
0	UVLO	R	0	1: The input voltage is less than UVLO threshold (falling edge).

- (1) All bit values are latched until the device is reset, or the STATUS register is read. Then, the STATUS register is reset to the default values.

9 Application and Implementation

注

Information in the following applications sections is not part of the TI component specification, and TI does not warrant its accuracy or completeness. TI's customers are responsible for determining suitability of components for their purposes, as well as validating and testing their design implementation to confirm system functionality.

9.1 Application Information

The TPSM8286xx is a synchronous, step-down converter, power module family. The following section discusses the selection of the external components to complete the power supply design. The required power inductor is integrated inside the TPSM8286xx. The RCF MagPack package not only has a 200 nH shielded inductor but also shields the IC for a better EMI performance. The TPSM82864x and TPSM82866x are pin-to-pin and BOM-to-BOM compatible. The 4A and 6A version give the same efficiency and performance and are different only in the rated output current.

9.2 Typical Application

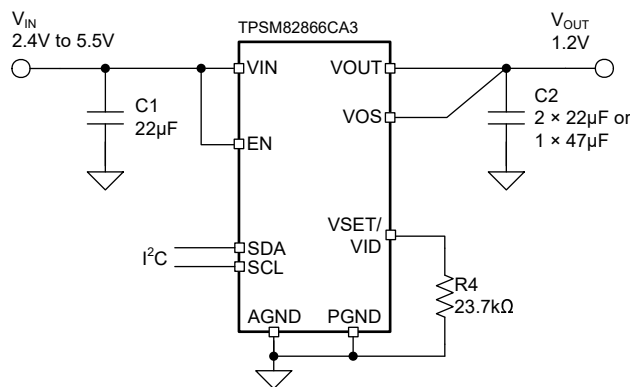


図 9-1. Typical Application

9.2.1 Design Requirements

For this design example, use 表 9-1 as the input parameters.

表 9-1. Design Parameters

DESIGN PARAMETER	EXAMPLE VALUE
Input voltage	2.4V to 5.5V
Output voltage	1.2V
Maximum output current	6A

表 9-2 lists the components used for the example.

表 9-2. List of Components

REFERENCE	DESCRIPTION	MANUFACTURER ⁽¹⁾
C1	22µF, ceramic capacitor, 6.3V, X7R, size 0805, GRM21BZ70J226ME44	Murata
C2	47µF, ceramic capacitor, 6.3V, X6S, size 0805, GRM21BC80J476ME01L	Murata
R4 ⁽²⁾	Depending on the output voltage, Chip resistor, 1/16W, 1%	Std

(1) See the *Third-Party Products disclaimer*.

(2) See 表 7-1 for the VSET/VID resistor values.

9.2.2 Detailed Design Procedure

9.2.2.1 Input and Output Capacitor Selection

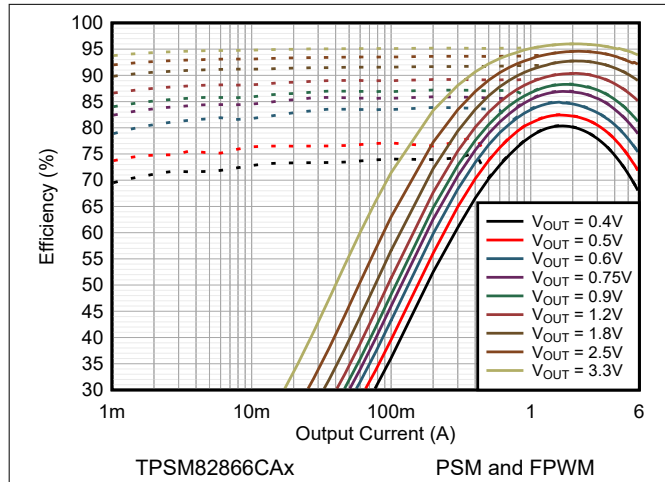
For the best output and input voltage filtering, low-ESR ceramic capacitors are required. The input capacitor minimizes input voltage ripple, suppresses input voltage spikes, and provides a stable system rail for the device. The input capacitor must be placed between VIN and PGND as close as possible to those pins. For most applications, 22 μ F is sufficient, though a larger value reduces input current ripple. The input capacitor plays an important role in the EMI performance of the system as explained in the [Simplify Low EMI Design With Power Modules white paper](#).

The architecture of the device allows the use of tiny ceramic output capacitors with low equivalent series resistance (ESR). These capacitors provide low output voltage ripple and are recommended. The capacitor value can range from 2 \times 22 μ F up to 150 μ F. The recommended typical output capacitors are 2 \times 22 μ F or 1 \times 47 μ F with an X5R or better dielectric. Values over 150 μ F can degrade the loop stability of the converter.

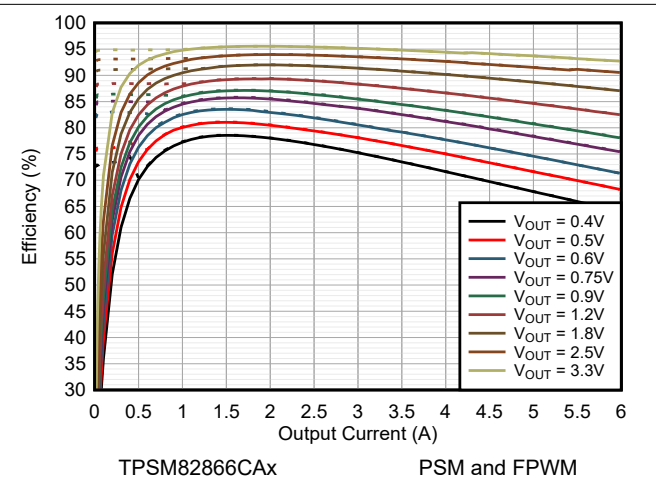
Ceramic capacitors have a DC-Bias effect, which has a strong influence on the final effective capacitance. Choose the right capacitor carefully in combination with considering its package size and voltage rating. Make sure that the effective input capacitance is at least 10 μ F and the effective output capacitance is at least 22 μ F.

9.2.3 Application Curves

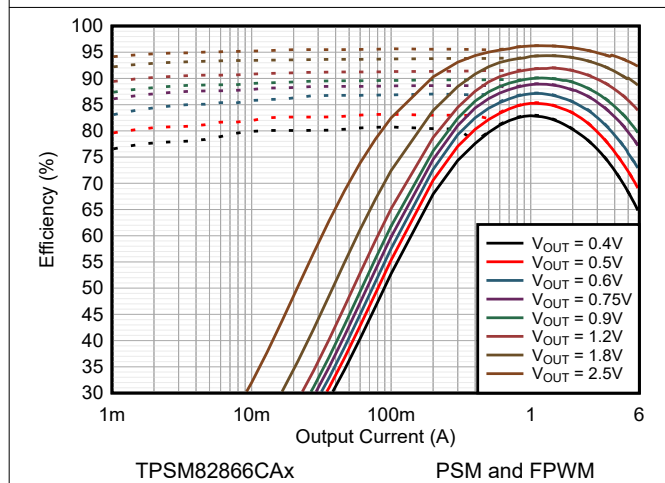
$V_{IN} = 5.0V$, $V_{OUT} = 1.2V$, $T_A = 25^\circ C$, BOM = 表 9-2, unless otherwise noted. Solid lines show the FPWM mode and dashed lines show PSM.



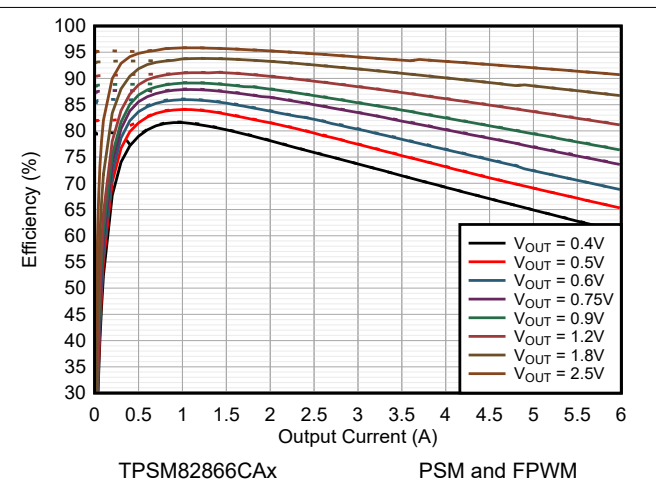
9-2. Efficiency $V_{IN} = 5.0V$ and $T_A = 25^\circ C$



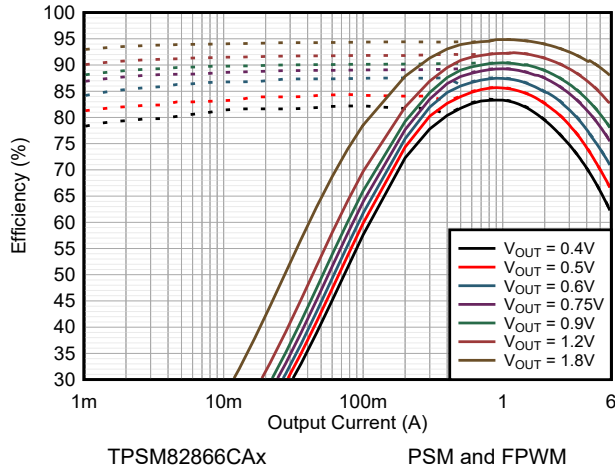
9-3. Efficiency $V_{IN} = 5.0V$ and $T_A = 85^\circ C$



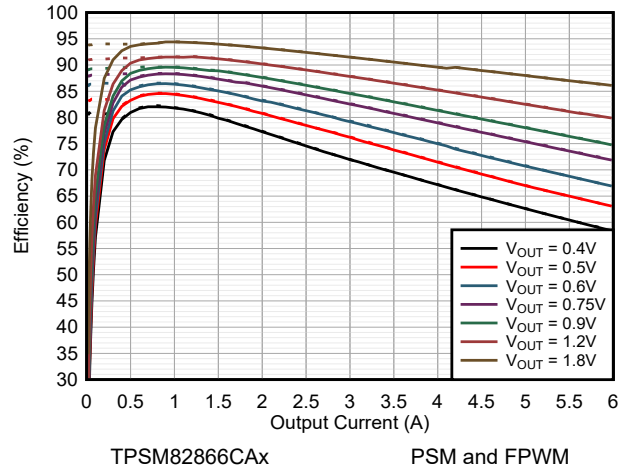
9-4. Efficiency $V_{IN} = 3.3V$ and $T_A = 25^\circ C$



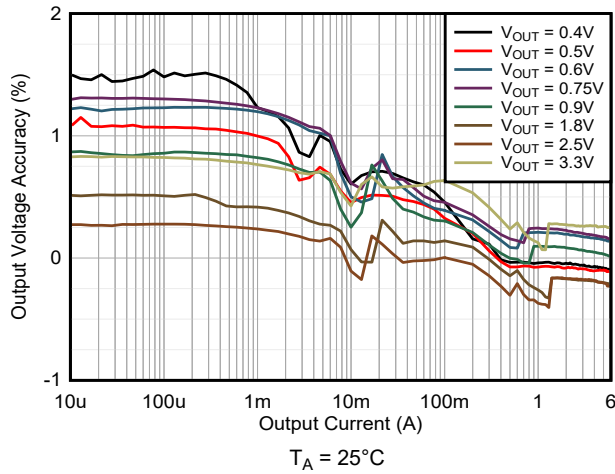
9-5. Efficiency $V_{IN} = 3.3V$ and $T_A = 85^\circ C$



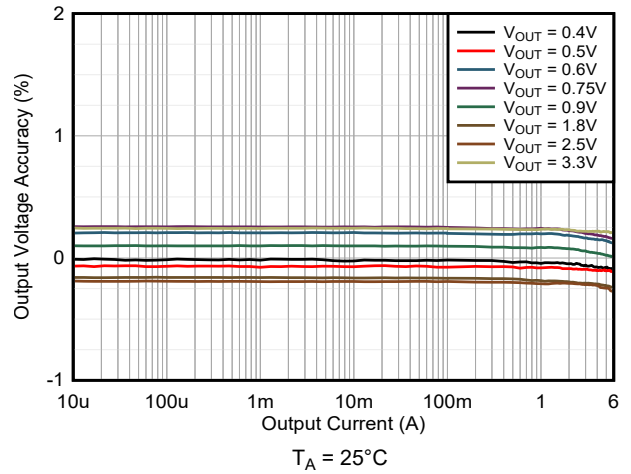
9-6. Efficiency $V_{IN} = 2.8V$ and $T_A = 25^\circ C$



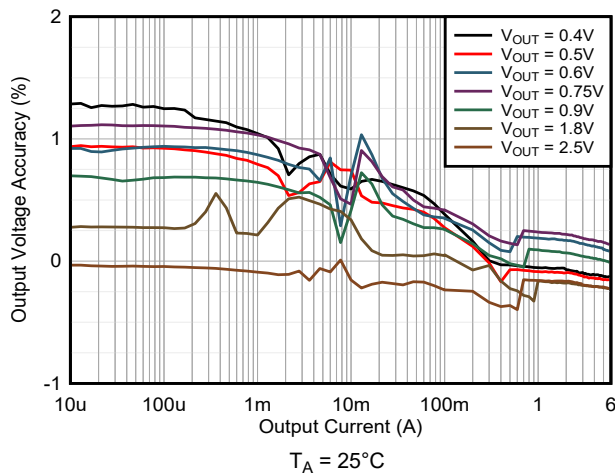
9-7. Efficiency $V_{IN} = 2.8V$ and $T_A = 85^\circ C$



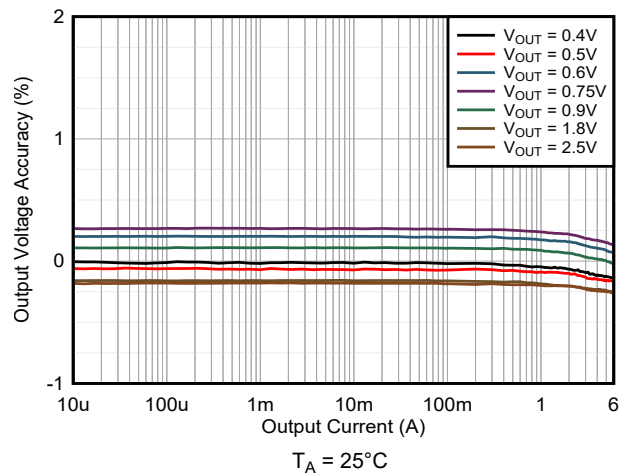
9-8. Load Regulation $V_{IN} = 5.0V$ and PSM



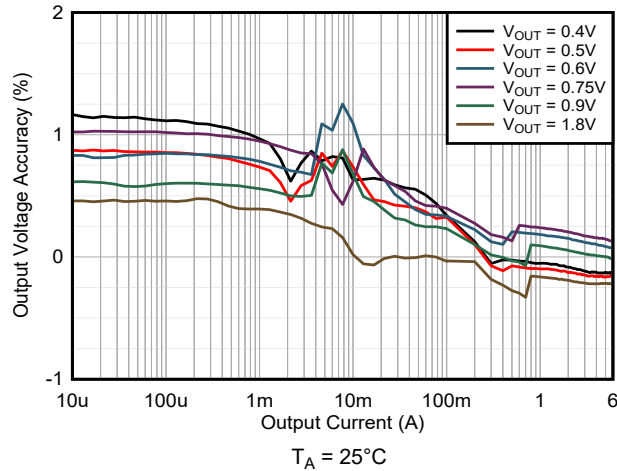
9-9. Load Regulation $V_{IN} = 5.0V$ and FPWM



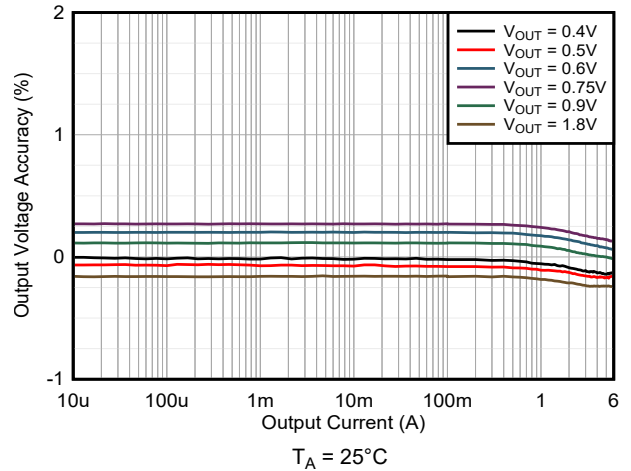
9-10. Load Regulation $V_{IN} = 3.3V$ and PSM



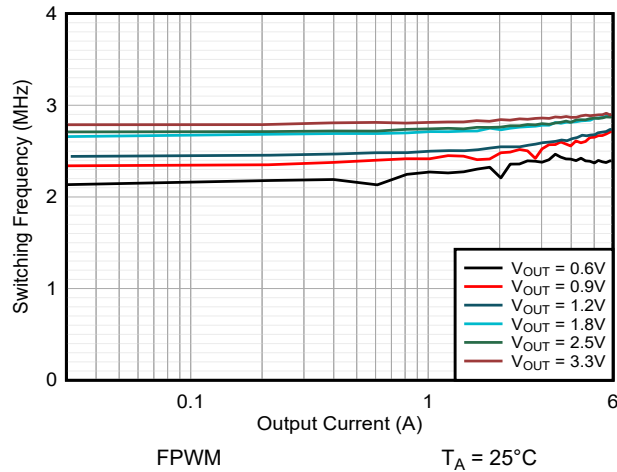
9-11. Load Regulation $V_{IN} = 3.3V$ and FPWM



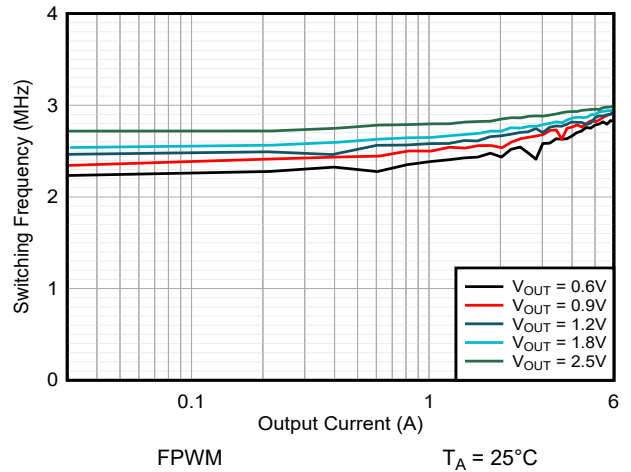
9-12. Load Regulation $V_{IN} = 2.8V$ and PSM



9-13. Load Regulation $V_{IN} = 2.8V$ and FPWM



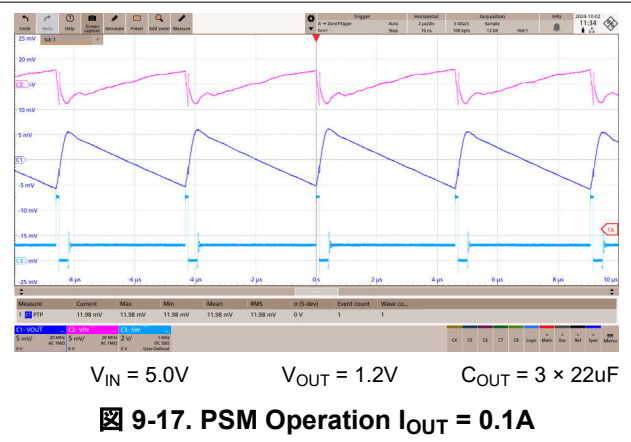
9-14. Switching Frequency $V_{IN} = 5.0V$



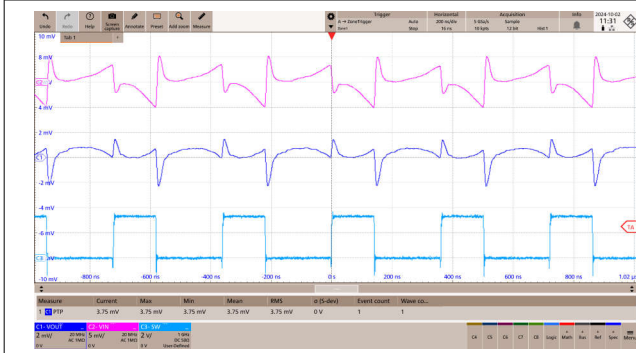
9-15. Switching Frequency $V_{IN} = 3.3V$



9-16. FPWM Operation $I_{OUT} = 3A$

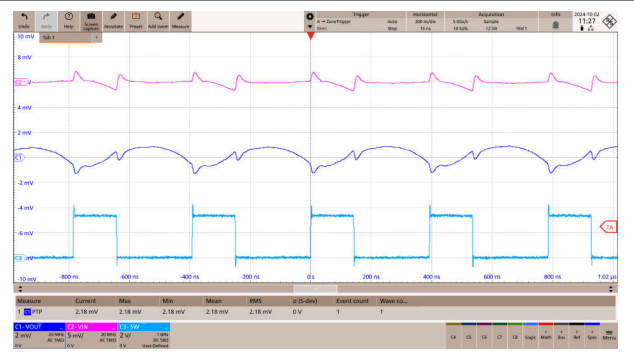


9-17. PSM Operation $I_{OUT} = 0.1A$



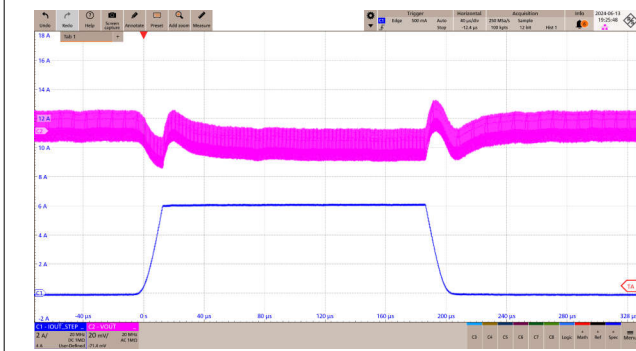
$V_{IN} = 3.3V$ $V_{OUT} = 1.2V$ $C_{OUT} = 3 \times 22\mu F$

9-18. FPWM Operation $I_{OUT} = 3A$



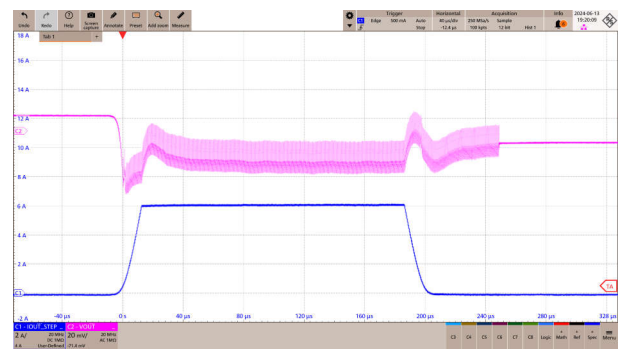
$V_{IN} = 3.3V$ $V_{OUT} = 1.2V$ $C_{OUT} = 3 \times 22\mu F$

9-19. FPWM Operation $I_{OUT} = 0.1A$



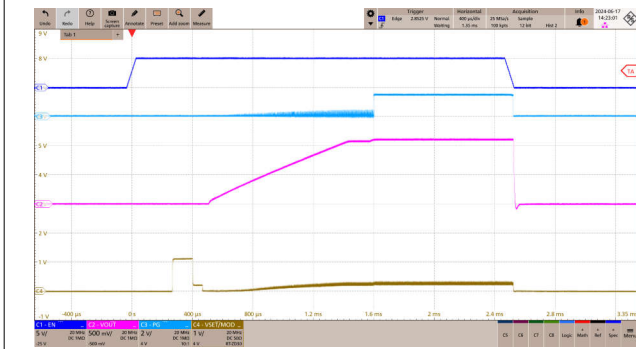
$V_{IN} = 5.0V$ $V_{OUT} = 1.2V$ $C_{OUT} = 2 \times 22\mu F$

9-20. Load Transient FPWM $I_{OUT} = 0A \rightarrow 6A$



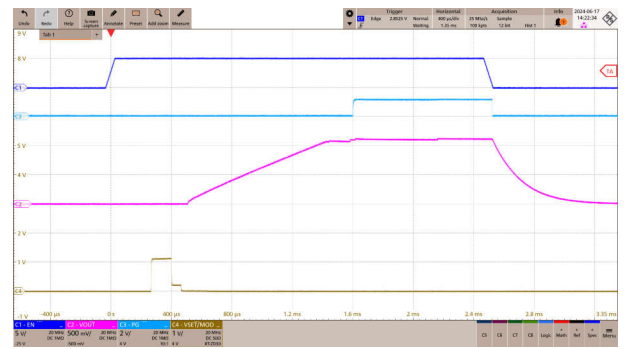
$V_{IN} = 5.0V$ $V_{OUT} = 1.2V$ $C_{OUT} = 2 \times 22\mu F$

9-21. Load Transient PSM $I_{OUT} = 0A \rightarrow 6A$



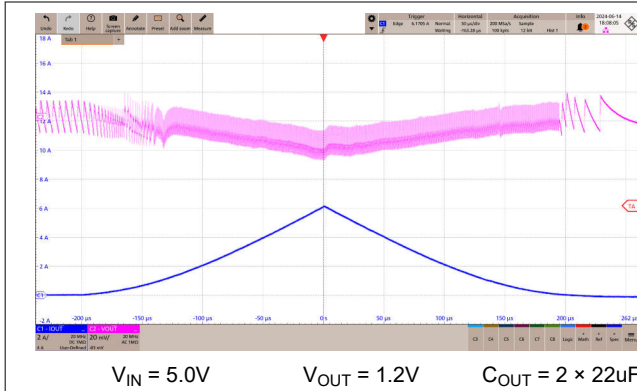
$R_{VSET} = 56.2k\Omega$ $I_{OUT} = 6.0A$

9-22. Start-Up into Full Load

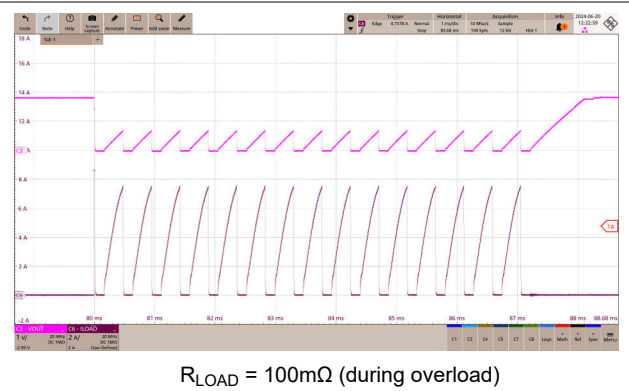


$R_{VSET} = 56.2k\Omega$ $I_{OUT} = 0A$

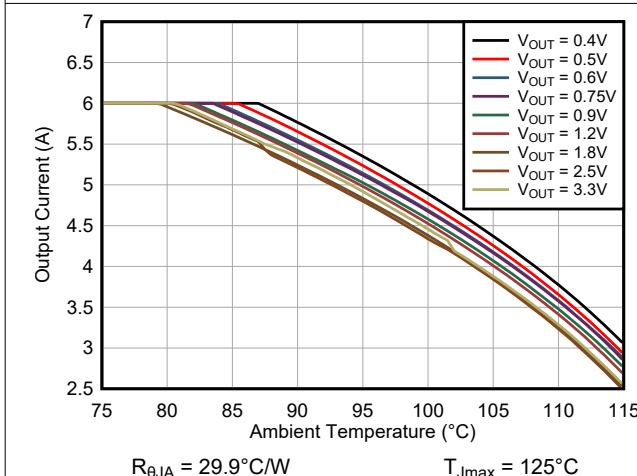
9-23. Start-Up With No Load



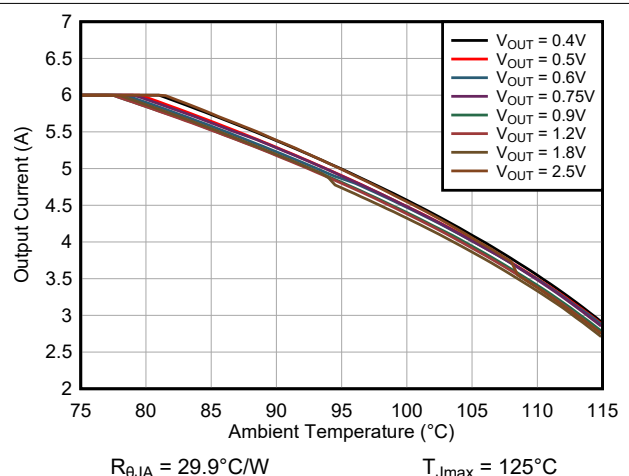
9-24. Load Sweep $I_{OUT} = 20\text{mA} \rightarrow 6\text{A}$



9-25. HICCUP Short-Circuit Protection



9-26. Safe Operating Area $V_{IN} = 5.0\text{V}$
TPSM82866CAx



9-27. Safe Operating Area $V_{IN} = 3.3\text{V}$
TPSM82866CAx

9.3 Power Supply Recommendations

The device is designed to operate from an input voltage supply range from 2.4V to 5.5V. The average input current of the TPSM8286xx is calculated as:

$$I_{IN} = \frac{1}{\eta} \times \frac{V_{OUT} \times I_{OUT}}{V_{IN}} \tag{5}$$

Make sure that the input power supply has a sufficient current rating for the application. The power supply must avoid a fast ramp down. The falling ramp speed must be slower than 10mV/μs if the input voltage drops below V_{UVLO} .

9.4 Layout

9.4.1 Layout Guidelines

A proper layout is critical for the operation of any switched mode power supply, especially at high switching frequencies. Therefore, the PCB layout of the TPSM8286xx demands careful attention to make sure of best performance. A poor layout can lead to issues like the following:

- Bad line and load regulation
- Instability
- Increased EMI radiation
- Noise sensitivity

Refer to the [Five Steps to a Great PCB Layout for a Step-Down Converter analog design journal](#) for a detailed discussion of general best practices. The following are specific recommendations for the TPSM8286xx:

- Place the input capacitor as close as possible to the VIN and PGND pins of the device. This placement is the most critical component placement. Route the input capacitor directly to the VIN and PGND pins avoiding vias.
- Place the output capacitor close to the VOUT and PGND pins and route directly avoiding vias.
- Place R4 close to the VSET/VID pin to minimize noise pickup.
- Take special care to avoid noise being induced. Keep the trace away from SW. The sense traces connected to the VOS pin is a signal trace.
- Directly connect the AGND and PGND pins together on the top PCB layer.
- Refer to [Figure 9-28](#) for an example of component placement, routing, and thermal design.
- See the recommended land pattern for the TPSM8286xx shown at the end of this data sheet. For best manufacturing results, create the pads as solder mask defined (SMD) when some pins (such as VIN, VOUT, and PGND) are connected to large copper planes. Using SMD pads keeps each pad the same size and avoids solder pulling the device during reflow.

9.4.2 Layout Example

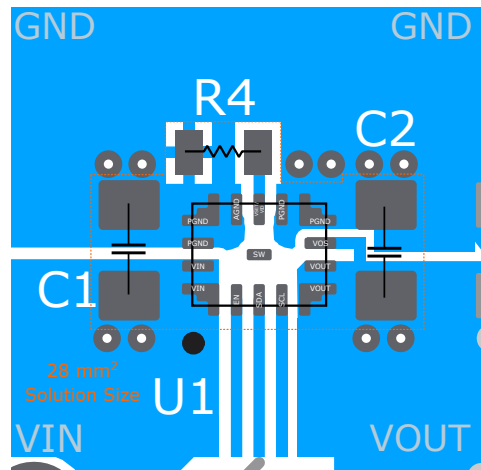


Figure 9-28. Layout Example

9.4.2.1 Thermal Considerations

The TPSM8286xx power module temperature must be kept less than the maximum rating of 125°C. The following are three basic approaches for enhancing thermal performance:

- Improve the power dissipation capability of the PCB design.
- Improve the thermal coupling of the component to the PCB.
- Introduce airflow into the system.

To estimate the approximate module temperature of the TPSM8286xx, apply the typical efficiency stated in this data sheet to the desired application condition to compute the power dissipation of the module. Then, calculate the module temperature rise by multiplying the power dissipation by the thermal resistance. Using this method to compute the maximum device temperature, the Safe Operating Area (SOA) graphs demonstrate the required derating in maximum output current at high ambient temperatures. For more details on how to use the thermal parameters in real applications, see the [Thermal Characteristics of Linear and Logic Packages Using JEDEC PCB Designs application report](#) and [Semiconductor and IC Package Thermal Metrics application note](#).

10 Device and Documentation Support

10.1 Device Support

10.1.1 サード・パーティ製品に関する免責事項

サード・パーティ製品またはサービスに関するテキサス・インスツルメンツの出版物は、単独またはテキサス・インスツルメンツの製品、サービスと一緒に提供される場合に関係なく、サード・パーティ製品またはサービスの適合性に関する是認、サード・パーティ製品またはサービスの是認の表明を意味するものではありません。

10.2 Documentation Support

10.2.1 Related Documentation

For related documentation, see the following:

- Texas Instruments, [Thermal Characteristics of Linear and Logic Packages Using JEDEC PCB Designs application report](#)
- Texas Instruments, [Semiconductor and IC Package Thermal Metrics application note](#)
- Texas Instruments, [Benefits of a Resistor-to-Digital Converter in Ultra-Low Power Supplies white paper](#)
- Texas Instruments, [Simplify Low EMI Design With Power Modules white paper](#)
- Texas Instruments, [Five Steps to a Great PCB Layout for a Step-Down Converter analog design journal](#)

10.3 ドキュメントの更新通知を受け取る方法

ドキュメントの更新についての通知を受け取るには、www.tij.co.jp のデバイス製品フォルダを開いてください。[通知] をクリックして登録すると、変更されたすべての製品情報に関するダイジェストを毎週受け取ることができます。変更の詳細については、改訂されたドキュメントに含まれている改訂履歴をご覧ください。

10.4 サポート・リソース

テキサス・インスツルメンツ E2E™ サポート・フォーラムは、エンジニアが検証済みの回答と設計に関するヒントをエキスパートから迅速かつ直接得ることができる場所です。既存の回答を検索したり、独自の質問をしたりすることで、設計に必要な支援を迅速に得ることができます。

リンクされているコンテンツは、各寄稿者により「現状のまま」提供されるものです。これらはテキサス・インスツルメンツの仕様を構成するものではなく、必ずしもテキサス・インスツルメンツの見解を反映したものではありません。テキサス・インスツルメンツの[使用条件](#)を参照してください。

10.5 Trademarks

MagPack™ and テキサス・インスツルメンツ E2E™ are trademarks of Texas Instruments.
すべての商標は、それぞれの所有者に帰属します。

10.6 静電気放電に関する注意事項



この IC は、ESD によって破損する可能性があります。テキサス・インスツルメンツは、IC を取り扱う際には常に適切な注意を払うことを推奨します。正しい取り扱いおよび設置手順に従わない場合、デバイスを破損するおそれがあります。

ESD による破損は、わずかな性能低下からデバイスの完全な故障まで多岐にわたります。精密な IC の場合、パラメータがわずかに変化するだけで公表されている仕様から外れる可能性があるため、破損が発生しやすくなっています。

10.7 用語集

[テキサス・インスツルメンツ用語集](#) この用語集には、用語や略語の一覧および定義が記載されています。

11 Revision History

資料番号末尾の英字は改訂を表しています。その改訂履歴は英語版に準じています。

Changes from Revision * (June 2024) to Revision A (November 2024)	Page
• ドキュメントのステータスを「事前情報」から「量産データ」に変更.....	1

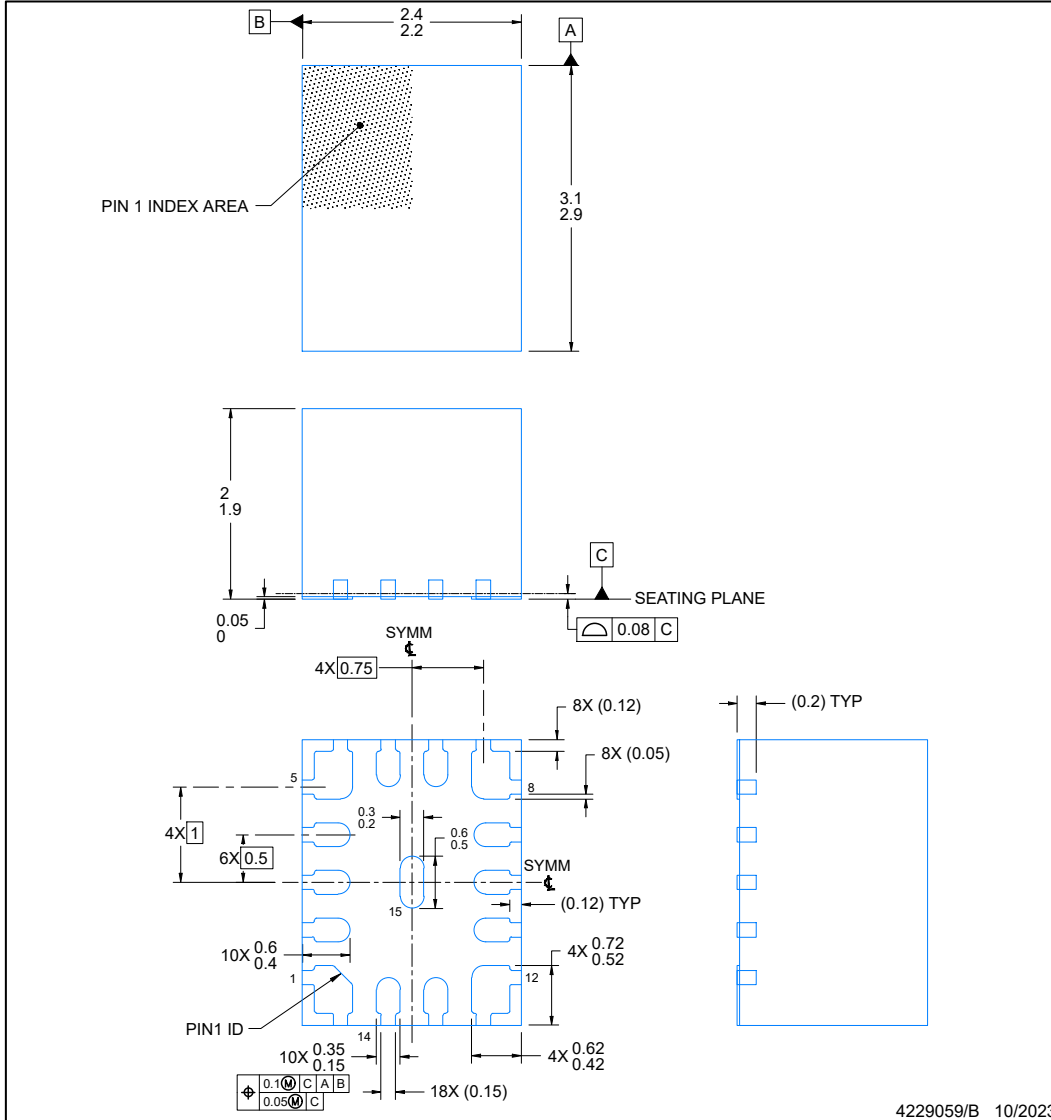
12 Mechanical, Packaging, and Orderable Information

The following pages include mechanical, packaging, and orderable information. This information is the most current data available for the designated devices. This data is subject to change without notice and revision of this document. For browser-based versions of this data sheet, refer to the left-hand navigation.

RCF0015A

PACKAGE OUTLINE
QFN-FCMOD - 2 mm max height

PLASTIC QUAD FLAT PACK- NO LEAD



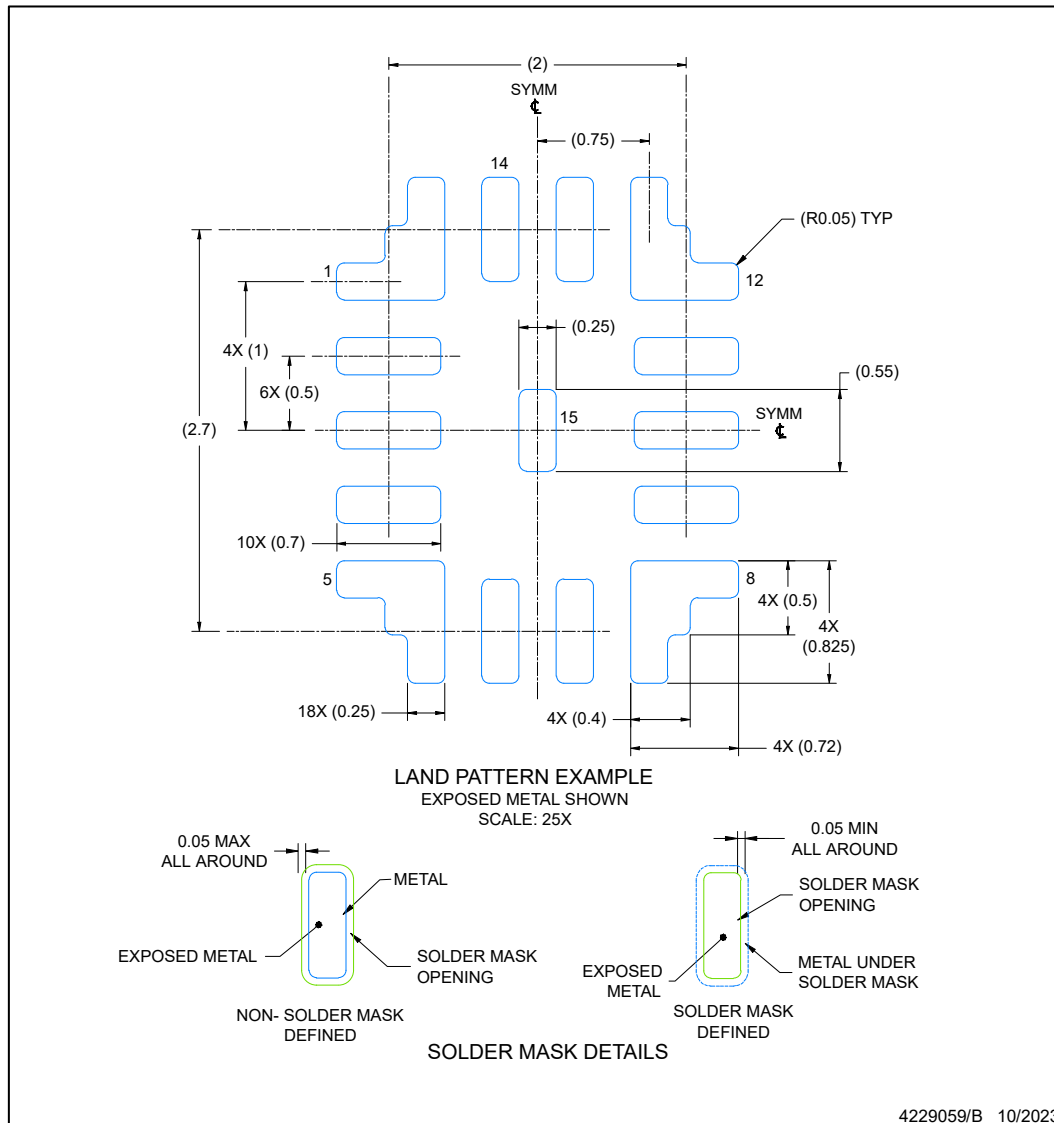
NOTES:

1. All linear dimensions are in millimeters. Any dimensions in parenthesis are for reference only. Dimensioning and tolerancing per ASME Y14.5M.
2. This drawing is subject to change without notice.

EXAMPLE BOARD LAYOUT
QFN-FCMOD - 2 mm max height

RCF0015A

PLASTIC QUAD FLAT PACK- NO LEAD



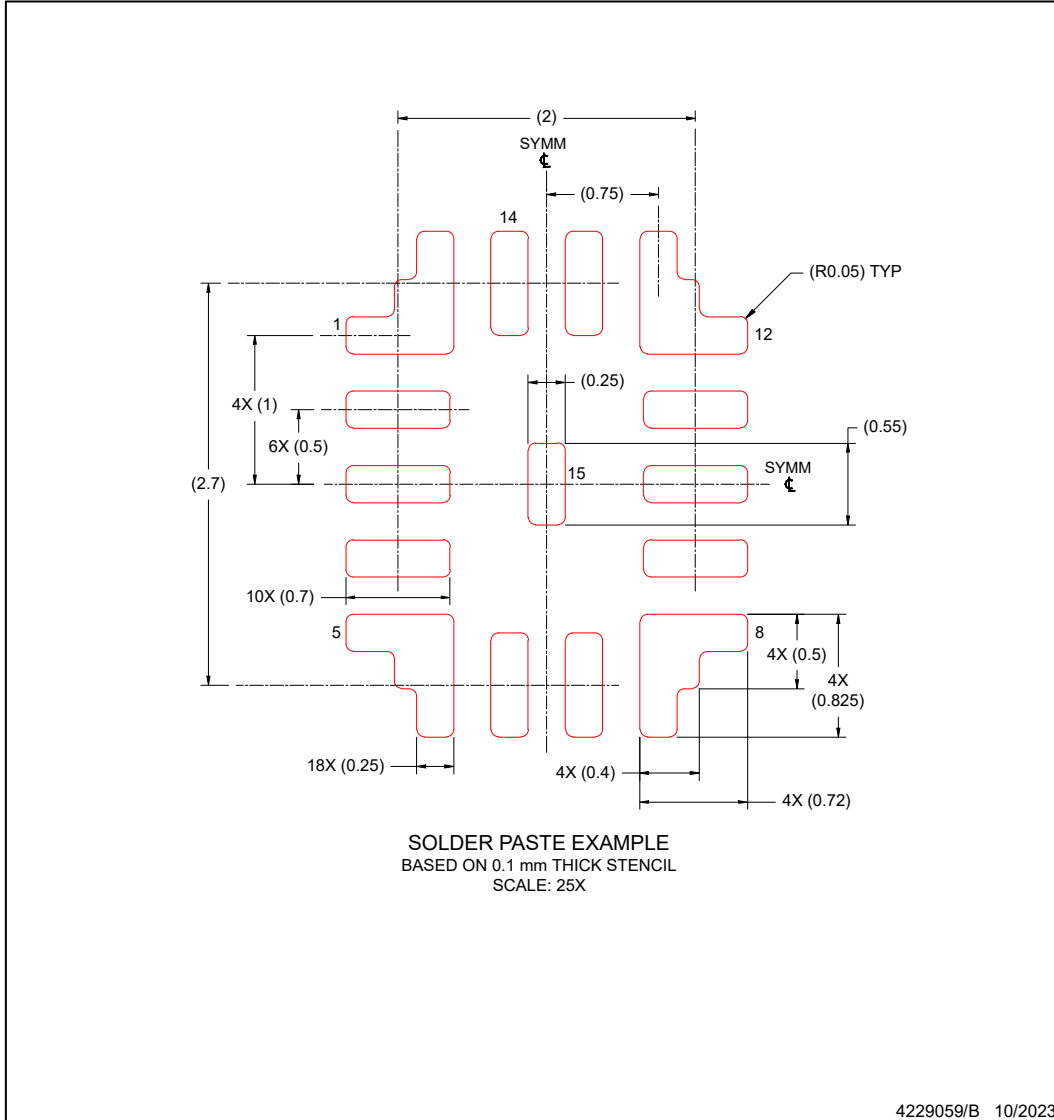
NOTES: (continued)

- This package is designed to be soldered to a thermal pad on the board. For more information, see Texas Instruments literature number SLUA271 (www.ti.com/lit/slua271).

EXAMPLE STENCIL DESIGN
QFN-FCMOD - 2 mm max height

RCF0015A

PLASTIC QUAD FLAT PACK- NO LEAD



NOTES: (continued)

4. Laser cutting apertures with trapezoidal walls and rounded corners may offer better paste release. IPC-7525 may have alternate design recommendations.

重要なお知らせと免責事項

テキサス・インスツルメンツは、技術データと信頼性データ (データシートを含みます)、設計リソース (リファレンス デザインを含みます)、アプリケーションや設計に関する各種アドバイス、Web ツール、安全性情報、その他のリソースを、欠陥が存在する可能性のある「現状のまま」提供しており、商品性および特定目的に対する適合性の黙示保証、第三者の知的財産権の非侵害保証を含むいかなる保証も、明示的または黙示的にかかわらず拒否します。

これらのリソースは、テキサス・インスツルメンツ製品を使用する設計の経験を積んだ開発者への提供を意図したものです。(1) お客様のアプリケーションに適した テキサス・インスツルメンツ製品の選定、(2) お客様のアプリケーションの設計、検証、試験、(3) お客様のアプリケーションに該当する各種規格や、その他のあらゆる安全性、セキュリティ、規制、または他の要件への確実な適合に関する責任を、お客様のみが単独で負うものとします。

上記の各種リソースは、予告なく変更される可能性があります。これらのリソースは、リソースで説明されている テキサス・インスツルメンツ製品を使用するアプリケーションの開発の目的でのみ、テキサス・インスツルメンツはその使用をお客様に許諾します。これらのリソースに関して、他の目的で複製することや掲載することは禁止されています。テキサス・インスツルメンツや第三者の知的財産権のライセンスが付与されている訳ではありません。お客様は、これらのリソースを自身で使用した結果発生するあらゆる申し立て、損害、費用、損失、責任について、テキサス・インスツルメンツおよびその代理人を完全に補償するものとし、テキサス・インスツルメンツは一切の責任を拒否します。

テキサス・インスツルメンツの製品は、[テキサス・インスツルメンツの販売条件](#)、または [ti.com](https://www.ti.com) やかかる テキサス・インスツルメンツ製品の関連資料などのいずれかを通じて提供する適用可能な条項の下で提供されています。テキサス・インスツルメンツがこれらのリソースを提供することは、適用されるテキサス・インスツルメンツの保証または他の保証の放棄の拡大や変更を意味するものではありません。

お客様がいかなる追加条項または代替条項を提案した場合でも、テキサス・インスツルメンツはそれらに異議を唱え、拒否します。

郵送先住所: Texas Instruments, Post Office Box 655303, Dallas, Texas 75265

Copyright © 2024, Texas Instruments Incorporated

PACKAGING INFORMATION

Orderable Device	Status (1)	Package Type	Package Drawing	Pins	Package Qty	Eco Plan (2)	Lead finish/ Ball material (6)	MSL Peak Temp (3)	Op Temp (°C)	Device Marking (4/5)	Samples
TPSM82866CA3PRCFR	ACTIVE	QFN-FCMOD	RCF	15	3000	RoHS & Green	NIPDAU	Level-3-260C-168 HR	-40 to 125	T8866C	Samples
XPSM82866CA3PRCFR	ACTIVE	QFN-FCMOD	RCF	15	3000	TBD	Call TI	Call TI	-40 to 125		Samples

(1) The marketing status values are defined as follows:

ACTIVE: Product device recommended for new designs.

LIFEBUY: TI has announced that the device will be discontinued, and a lifetime-buy period is in effect.

NRND: Not recommended for new designs. Device is in production to support existing customers, but TI does not recommend using this part in a new design.

PREVIEW: Device has been announced but is not in production. Samples may or may not be available.

OBSOLETE: TI has discontinued the production of the device.

(2) **RoHS:** TI defines "RoHS" to mean semiconductor products that are compliant with the current EU RoHS requirements for all 10 RoHS substances, including the requirement that RoHS substance do not exceed 0.1% by weight in homogeneous materials. Where designed to be soldered at high temperatures, "RoHS" products are suitable for use in specified lead-free processes. TI may reference these types of products as "Pb-Free".

RoHS Exempt: TI defines "RoHS Exempt" to mean products that contain lead but are compliant with EU RoHS pursuant to a specific EU RoHS exemption.

Green: TI defines "Green" to mean the content of Chlorine (Cl) and Bromine (Br) based flame retardants meet JS709B low halogen requirements of <=1000ppm threshold. Antimony trioxide based flame retardants must also meet the <=1000ppm threshold requirement.

(3) MSL, Peak Temp. - The Moisture Sensitivity Level rating according to the JEDEC industry standard classifications, and peak solder temperature.

(4) There may be additional marking, which relates to the logo, the lot trace code information, or the environmental category on the device.

(5) Multiple Device Markings will be inside parentheses. Only one Device Marking contained in parentheses and separated by a "~" will appear on a device. If a line is indented then it is a continuation of the previous line and the two combined represent the entire Device Marking for that device.

(6) Lead finish/Ball material - Orderable Devices may have multiple material finish options. Finish options are separated by a vertical ruled line. Lead finish/Ball material values may wrap to two lines if the finish value exceeds the maximum column width.

Important Information and Disclaimer:The information provided on this page represents TI's knowledge and belief as of the date that it is provided. TI bases its knowledge and belief on information provided by third parties, and makes no representation or warranty as to the accuracy of such information. Efforts are underway to better integrate information from third parties. TI has taken and continues to take reasonable steps to provide representative and accurate information but may not have conducted destructive testing or chemical analysis on incoming materials and chemicals. TI and TI suppliers consider certain information to be proprietary, and thus CAS numbers and other limited information may not be available for release.

In no event shall TI's liability arising out of such information exceed the total purchase price of the TI part(s) at issue in this document sold by TI to Customer on an annual basis.

TAPE AND REEL INFORMATION

QUADRANT ASSIGNMENTS FOR PIN 1 ORIENTATION IN TAPE

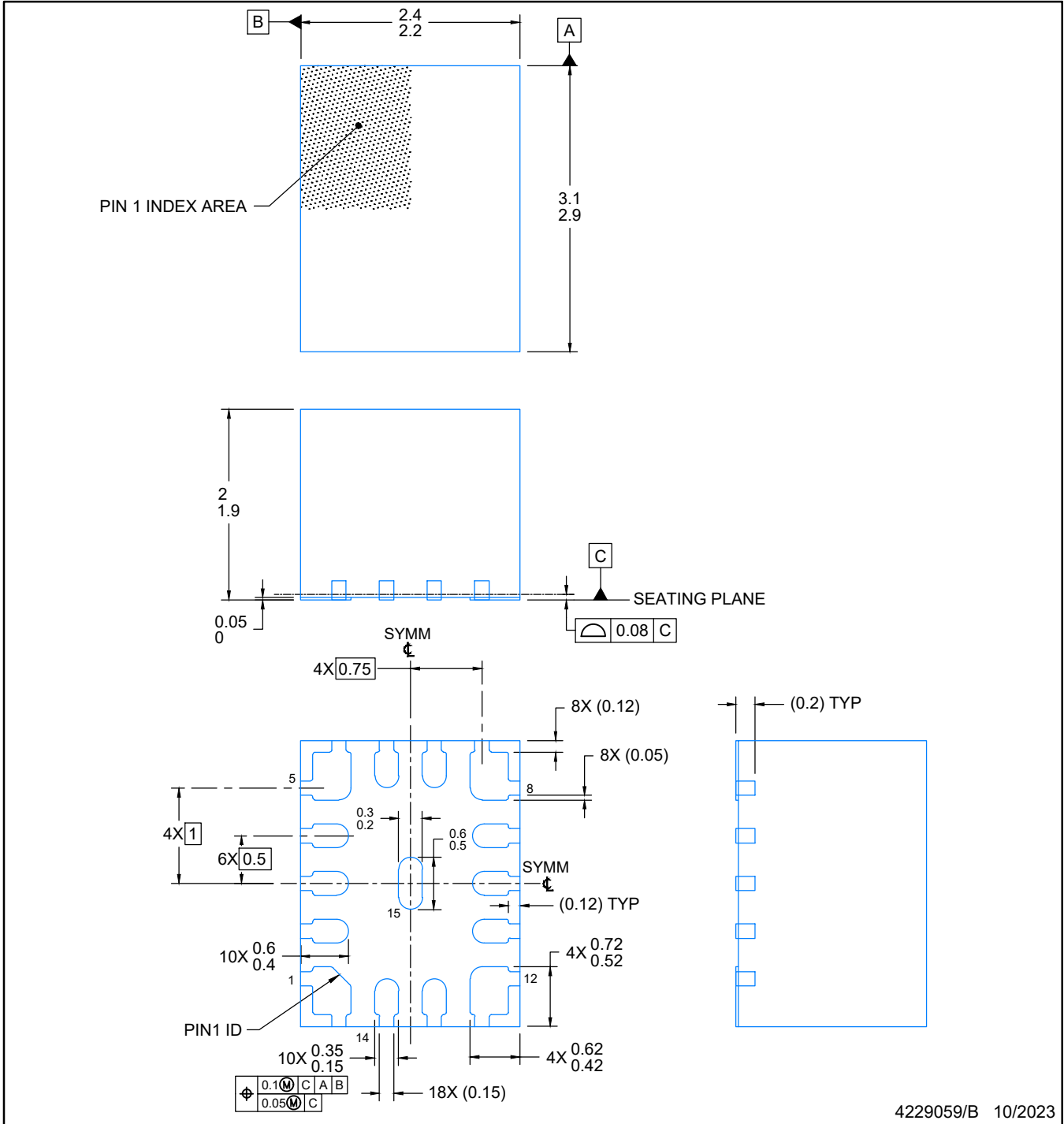

*All dimensions are nominal

Device	Package Type	Package Drawing	Pins	SPQ	Reel Diameter (mm)	Reel Width W1 (mm)	A0 (mm)	B0 (mm)	K0 (mm)	P1 (mm)	W (mm)	Pin1 Quadrant
TPSM82866CA3PRCFR	QFN-FCMOD	RCF	15	3000	330.0	12.4	2.6	3.3	2.2	8.0	12.0	Q1

TAPE AND REEL BOX DIMENSIONS


*All dimensions are nominal

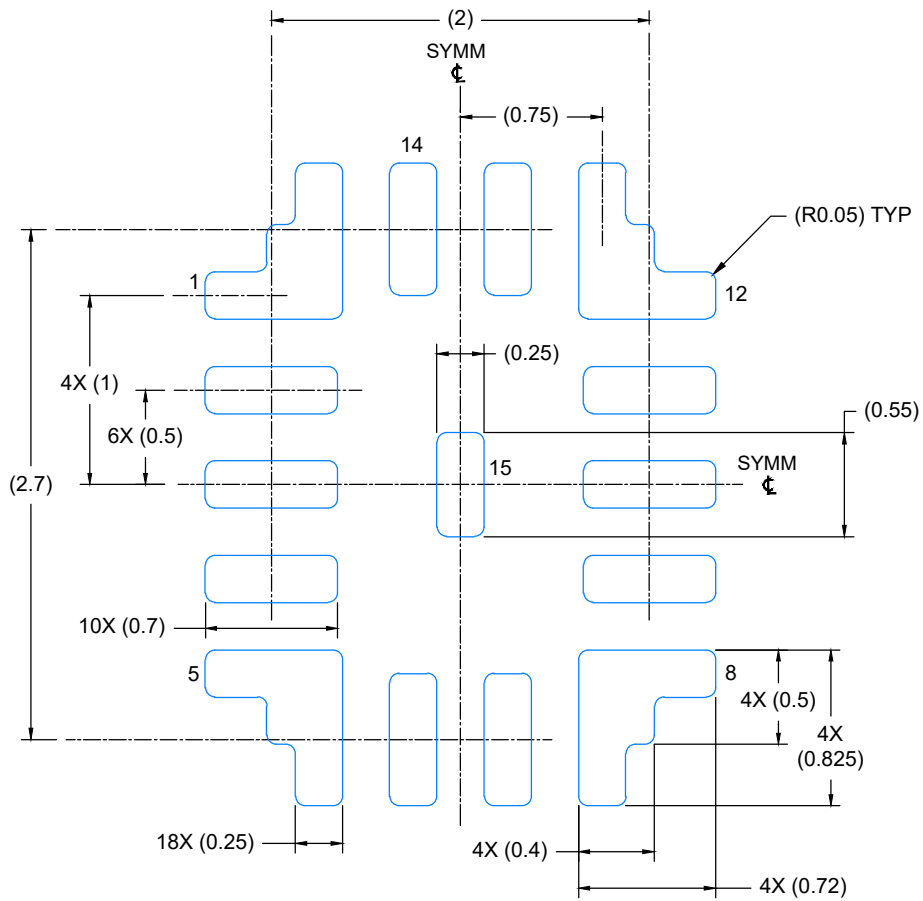
Device	Package Type	Package Drawing	Pins	SPQ	Length (mm)	Width (mm)	Height (mm)
TPSM82866CA3PRCFR	QFN-FCMOD	RCF	15	3000	367.0	367.0	35.0



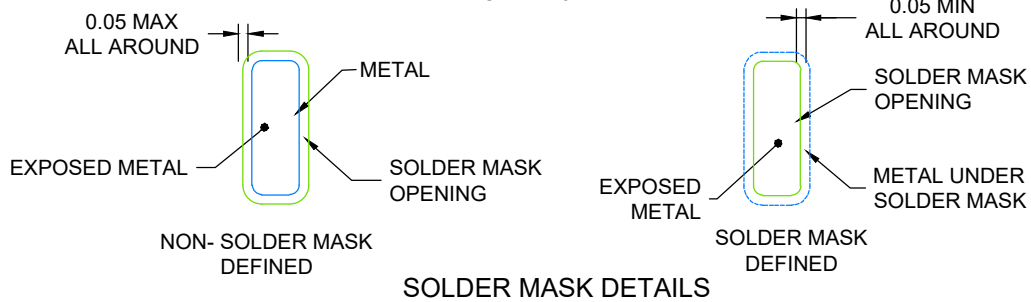
4229059/B 10/2023

NOTES:

1. All linear dimensions are in millimeters. Any dimensions in parenthesis are for reference only. Dimensioning and tolerancing per ASME Y14.5M.
2. This drawing is subject to change without notice.



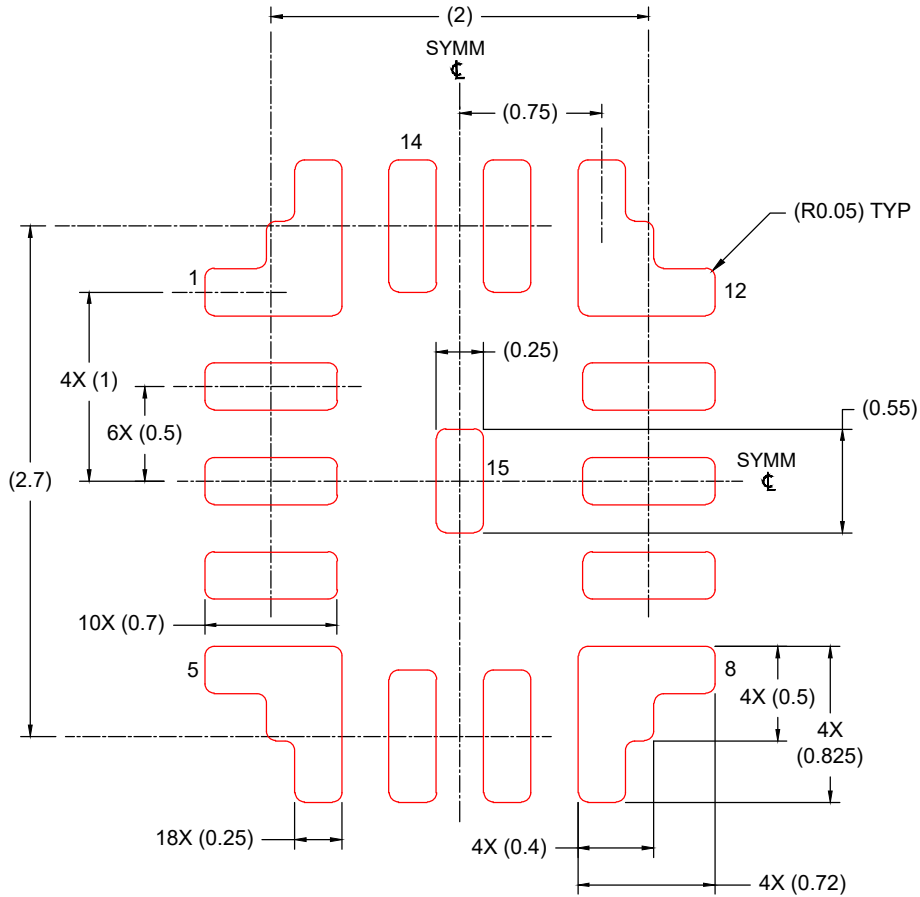
LAND PATTERN EXAMPLE
EXPOSED METAL SHOWN
SCALE: 25X



4229059/B 10/2023

NOTES: (continued)

- This package is designed to be soldered to a thermal pad on the board. For more information, see Texas Instruments literature number SLUA271 (www.ti.com/lit/slua271).



SOLDER PASTE EXAMPLE
 BASED ON 0.1 mm THICK STENCIL
 SCALE: 25X

4229059/B 10/2023

NOTES: (continued)

- 4. Laser cutting apertures with trapezoidal walls and rounded corners may offer better paste release. IPC-7525 may have alternate design recommendations.

重要なお知らせと免責事項

TI は、技術データと信頼性データ(データシートを含みます)、設計リソース(リファレンス・デザインを含みます)、アプリケーションや設計に関する各種アドバイス、Web ツール、安全性情報、その他のリソースを、欠陥が存在する可能性のある「現状のまま」提供しており、商品性および特定目的に対する適合性の黙示保証、第三者の知的財産権の非侵害保証を含むいかなる保証も、明示的または黙示的にかかわらず拒否します。

これらのリソースは、TI 製品を使用する設計の経験を積んだ開発者への提供を意図したものです。(1) お客様のアプリケーションに適した TI 製品の選定、(2) お客様のアプリケーションの設計、検証、試験、(3) お客様のアプリケーションに該当する各種規格や、その他のあらゆる安全性、セキュリティ、規制、または他の要件への確実な適合に関する責任を、お客様のみが単独で負うものとし、

上記の各種リソースは、予告なく変更される可能性があります。これらのリソースは、リソースで説明されている TI 製品を使用するアプリケーションの開発の目的でのみ、TI はその使用をお客様に許諾します。これらのリソースに関して、他の目的で複製することや掲載することは禁止されています。TI や第三者の知的財産権のライセンスが付与されている訳ではありません。お客様は、これらのリソースを自身で使用した結果発生するあらゆる申し立て、損害、費用、損失、責任について、TI およびその代理人を完全に補償するものとし、TI は一切の責任を拒否します。

TI の製品は、[TI の販売条件](#)、または [ti.com](#) やかかる TI 製品の関連資料などのいずれかを通じて提供する適用可能な条項の下で提供されています。TI がこれらのリソースを提供することは、適用される TI の保証または他の保証の放棄の拡大や変更を意味するものではありません。

お客様がいかなる追加条項または代替条項を提案した場合でも、TI はそれらに異議を唱え、拒否します。

郵送先住所 : Texas Instruments, Post Office Box 655303, Dallas, Texas 75265
Copyright © 2024, Texas Instruments Incorporated