

TI Designs: TIDA-01531 低消費電力wM-Bus通信モジュールのリファレンス・デザイン

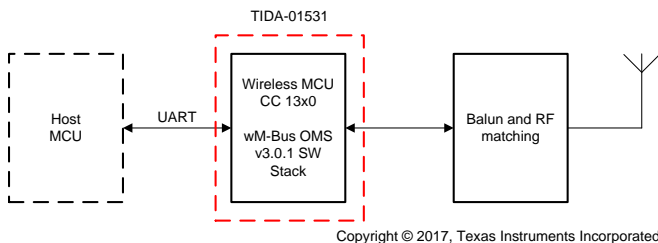
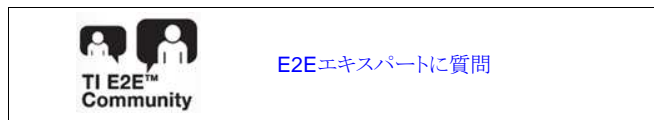


概要

このリファレンス・デザインでは、CC1310/CC1350ワイヤレスMCU用のTIワイヤレス・メータリングバス(M-Bus)スタックを使用し、これをスマート・メータまたはデータ・コレクタ製品に統合する方法を説明します。このソフトウェア・スタックは、Open Metering System (OMS) v3.0.1仕様に準拠しています。EN13757-1~EN13757-7はメータ読み取りの欧州規格で、有線およびワイヤレスのいずれのM-Busにも対応しており、超低消費電力のメータリング/サブメータリング・アプリケーションで広く普及しています。このデザインは、一方方向構成(メータ)または双方向構成(メータとデータ・コレクタの両方)の868MHzワイヤレスM-Bus S/T/Cモード用に、すぐ使えるバイナリ・イメージを提供しています。さまざまな事前コンパイル済みのバイナリ・イメージが提供されるため、ヒート・コスト・アロケータ(HCA)、ガス・メータ、水道メータ、ヒート・メータ、または外部ホストMCUを備えたeメータを始めとした各種のメータリング・アプリケーションに対応できます。

リソース

TIDA-01531	デザイン・フォルダ
CC1350 LaunchPad™	プロダクト・フォルダ
CC1310 LaunchPad	プロダクト・フォルダ
CC1350ワイヤレスMCU	プロダクト・フォルダ
CC1310ワイヤレスMCU	プロダクト・フォルダ

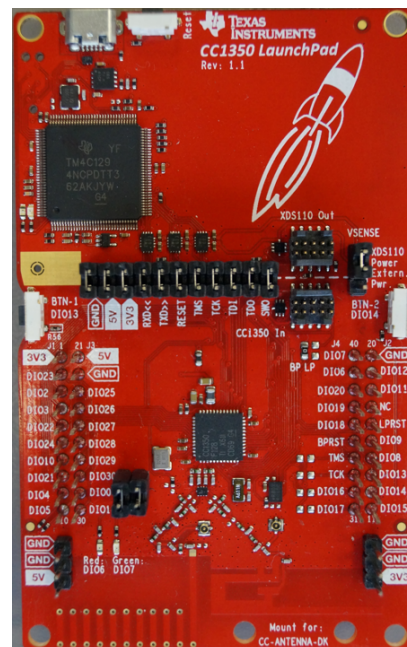


特長

- EN13757-4 Class H_Rの感度/選択性要件、Class H_TのS/T/Cモードにおける送信電力要件を満たす
- ホストMCUへのシリアル・インターフェイスを備えた完全なシングルチップ実装
- シャットダウン・モードの消費電流は、3.6Vでわずか0.7µA
- 組み込み(APIレベル)インターフェイスにより、wM-Busスタックとメータ・アプリケーションの組み合わせを実現
- wM-Bus OMSv3.0.1のS/Tモード(S1、S2、T1、T2)に加え、C1/C2モードを追加
- メータおよびデータ・コレクタ("Other")の機能をサポート

アプリケーション

- 868MHz wM-Bus通信に対応したメータリング/サブメータリング・システム
- 水道メータ、ヒート・メータ、ガス・メータ、ヒート・コスト・アロケータ
- eメータ(メータ・デバイスとして)
- フロー・メータからデータを収集するデータ・コレクタおよびeメータ
- インホーム・ディスプレイ、ハンドヘルド・リーダー





使用許可、知的財産、その他免責事項は、最終ページにあるIMPORTANT NOTICE(重要な注意事項)をご参照くださいますようお願いいたします。英語版のTI製品についての情報を翻訳したこの資料は、製品の概要を確認する目的で便宜的に提供しているものです。該当する正式な英語版の最新情報は、www.ti.comで閲覧でき、その内容が常に優先されます。TIでは翻訳の正確性および妥当性につきましては一切保証いたしません。実際の設計などの前には、必ず最新版の英語版をご参照くださいますようお願いいたします。

1 System Description

The European wM-Bus standard EN13757-4 was published in 2005 and defines a "star network" system architecture for wireless meter read-out and uses the 863- to 870-MHz ISM band. This standard was updated in 2013, when the 433- and 169-MHz narrow-band support were added. By 2017, the wM-Bus protocol has been selected as the communication interface for e-meters, gas meters, and water meters in countries like France, Netherlands, Italy, Germany, and others. Many of these countries are already deploying smart meters in significant volumes.

This reference design focuses on the 868-MHz ISM band and describes a wireless module compatible with S-, T-, and C-mode wM-Bus based on a single-chip CC13x0 Wireless MCU, which runs the TI [OMSv3.0.1 software stack](#). This combined solution of the CC13x0 and software stack is applicable for any metering applications such as mains-powered e-meters or battery-powered gas or water meters. Other widely deployed metering devices that can be used are heat cost allocators (HCAs), heat meters, data collectors, and in-home displays.

Statements in this design guide apply also to the CC1310, even if only CC1350 is mainly mentioned.

1.1 Key System Specifications

The CC1350 Wireless MCU operates from 1.8 to 3.8 V (4.1 V is the absolute maximum value allowed). This voltage range fits well with the two popular types of primary battery cells, either 3.6 V (LiSoCl₂) or 3.0 V (LiMnO₂) ones. The data rate of the UART link is set to 115.2 kbps; this is higher than the 100-kbps data rate over the air and sufficient to avoid data overflow while moving data to and from the CC1350.

The [wM-Bus Stack](#) supports:

- Unidirectional S1-, T1-, and C1-mode meter configuration at 868 MHz
- Bidirectional S2-, T2-, and C2-mode meter configuration at 868 MHz
- Bidirectional S2-, T2-, and C2-mode data collector configuration at 868 MHz
- 115.2-kbps UART interface with a serial command interpreter (to the external host MCU)
- API interface to integrate the wM-Bus stack into own application
- OMSv3.0.1 compatibility

The operating ambient temperature for the CC1350 and CC1310 is $T_A = -40^{\circ}\text{C}$ to 85°C .

2 System Overview

2.1 Block Diagram

This reference design describes the wM-Bus stack developed for the CC1350 and CC1310 devices. The combination of a CC13x0 Wireless MCU and a field proven wM-Bus OMSv3.0.1 software stack delivers a true *single-chip wireless M-Bus communication subsystem* with excellent RF parameters and extremely low-power.

The design implements either uni- or bidirectional RF communication subsystem, supporting the popular S-, T-, and C-modes in the 868-MHz band. Due to its small solution size and ultra-low-power consumption, it is a perfect fit for all battery-powered sub-meters such as gas, water, and heat meters or HCAs.

The main components of this reference design are:

- CC1350 Wireless SoC (on the [CC1350 LaunchPad EVM](#)), using discrete balun and RF filtering
- [TI wM-Bus Stack](#)

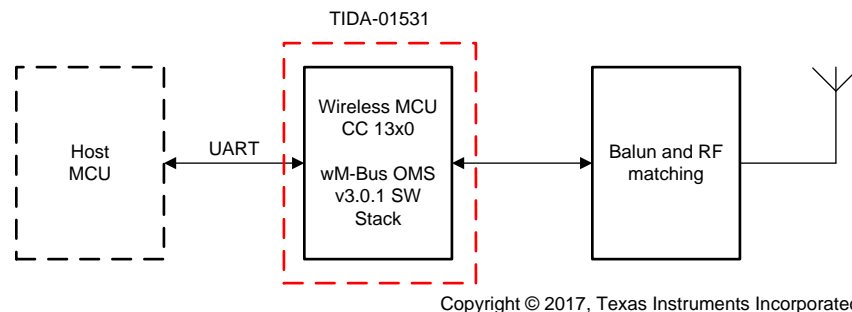


図 1. TIDA-01531 Block Diagram

2.2 Design Considerations

The first commercially available off-the-shelf wireless M-Bus modules were developed around 2008 to 2009 and have become quite popular. A wM-Bus module consists of an ultra-low-power MCU, executing the software stack and a Sub-1 GHz ISM band RF transceiver. There are modules with a single-chip or two-chip approach. In some cases, a third chip, such as an external PA or LNA, is added to boost the transmit power up to 27 or 30 dBm (conducted measurement) or improve the receive sensitivity. Wireless M-Bus modules are easy to integrate and shorten the development time because they handle the protocol stack and separate the time-critical metrology tasks from the wireless communication and are usually pre-certified for R&TTE [now radio equipment directive (RED)] compliance.

Using off-the-shelf wM-Bus modules like the MBUS3 and MBUS4 Radiocrafts families[®] shortens the time to market and brings many advantages over designing, testing, and manufacturing an own RF solution, especially for less experienced users. This reference design represents a *single-chip wM-Bus RF subsystem*, which is functionally equivalent to a "standard" wM-Bus module and allows full software and hardware integration into a customer product on the chip level, which is often preferred for high-volume projects.

Users have the choice of developing their own wM-Bus modules as a dedicated hardware by combining the wM-Bus software stack with one of the multiple CC1350 (or CC1310) hardware reference designs on [TI.com](#). Users can also embed both the stack and the preferred TI hardware reference design into their own product for the most cost-optimized solution.

2.3 Highlighted Products

The wM-Bus Communications Module subsystem comprises three building elements: the CC1350 device itself, the associated CC1350 hardware design (for example, single-band or dual-band), and the TI wM-Bus OMS3.0.1 stack.

2.3.1 CC1350 SimpleLink™ Ultra-Low-Power Dual-Band Wireless MCU

The CC1350 is the first device in the CC13xx and CC26xx family of cost-effective, ultra-low-power wireless MCUs capable of handling both Sub-1 GHz and 2.4 GHz RF frequencies. The CC1350 device combines a flexible, very low-power RF transceiver with a powerful 48-MHz Cortex® M3 MCU in a platform supporting multiple physical layers and RF standards. A dedicated radio controller (Cortex-M0) handles low-level RF protocol commands that are stored in ROM or RAM, thus ensuring ultra-low power and flexibility to handle both Sub-1 GHz and 2.4 GHz protocols (for example, *Bluetooth*® low energy; see [Figure 2](#)).

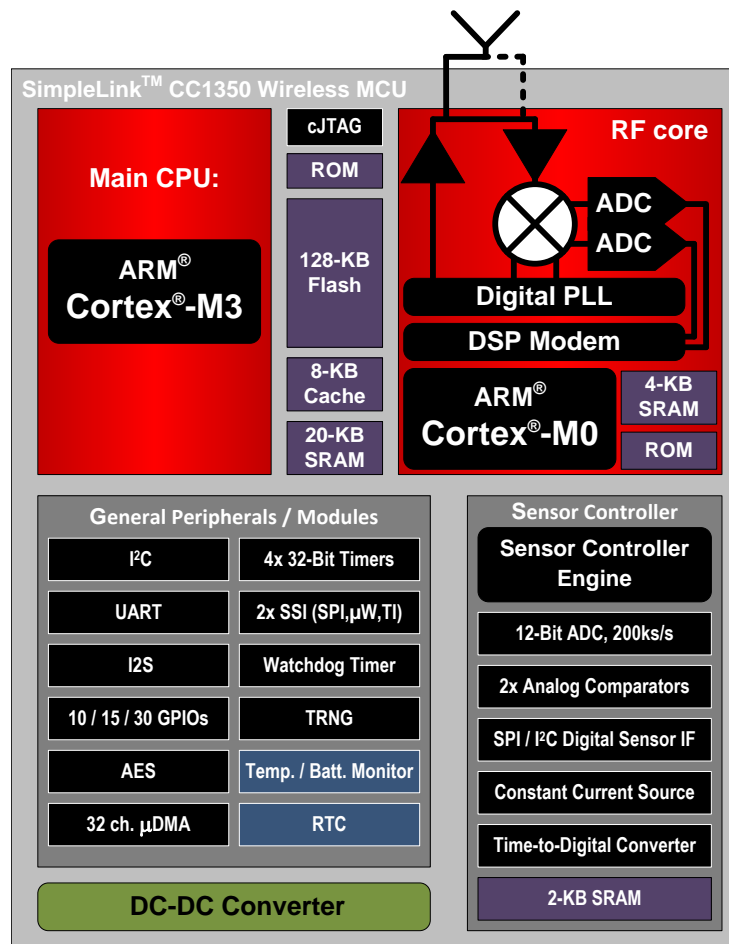


図 2. CC1350 Block Diagram

The ARM® Cortex-M3 runs with up to 48 MHz, and there is also 128kB of in-system programmable Flash, 8kB of SRAM for cache (or as general-purpose RAM), and 20-kB of ultra-low leakage SRAM in the device. The sensor controller has been optimized for ultra-low power and can run autonomously from the rest of the system at 24 MHz, using only 0.4 mA + 8.2 μA/MHz.

The sensor controller has a 16-bit architecture, controls the 12-bit ADC hardware block, and has its dedicated 2kB of ultra-low leakage SRAM for code and data. The CC1350 standby current is typically 0.7 μ A (with RTC running and RAM and data CPU retention). The sensor controller seamlessly interfaces to the IR LED and uses its internal TDC and COMPA (Comparator A) hardware blocks to deliver outstanding low-power consumption while executing various tasks.

2.3.2 CC1350 LaunchPad (EU Version)

The SimpleLink CC1350 wireless MCU LaunchPad development kit combines a Sub-1 GHz with a Bluetooth low energy radio for the ultimate combination of easy mobile phone integration with long-range connectivity including a 32-bit ARM Cortex-M3 processor on a single chip.

For the wM-Bus communication system, the [LAUNCHXL-CC1350EU](#) kit is recommended because it is optimized for 868-MHz operation under ETSI and has been CE certified for operation in the EU. This is the only hardware for which the OMS3.0.1 stack has been developed and tested on. Other CC1350 hardware reference designs can be also used but they might require UART pins reconfiguration (depending on the hardware used).

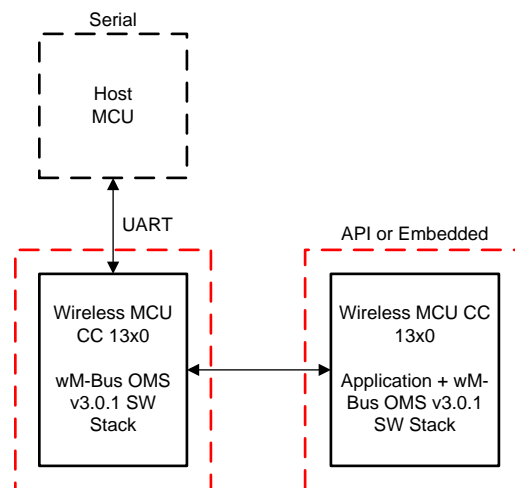
2.3.3 TI wM-Bus Stack Software

TI is providing a free-of-charge and royalty-free wM-Bus OMSv3.0.1 compatible software stack to use with the CC1350 and CC1310. The installer package is available for download at the [wM-Bus product page](#) and contains portions of object code and API code with example applications in source.

The IDE for the wM-Bus software stack is [Code Composer Studio™ v7.2.0.00013](#), the free integrated development environment (IDE) provided by TI, which includes a suite of tools for developing and debugging embedded applications.

The TI wM-Bus stack supports two different configurations:

1. Serial or network processor type
2. Embedded or API type



Copyright © 2017, Texas Instruments Incorporated

図 3. Two TI wM-Bus Stack Alternatives (Serial and Embedded or API)

☒ 3 shows the difference: on the left, the stack option "Serial" is shown. These are the binary images (named "*Serial*.out"), which include support for the serial commands that can be generated or received and processed by an external host MCU. This is particularly useful when the wM-Bus communications subsystem (here OMSv3.0.1) has to be separated from the main application or the metrology portion inside a smart meter. Such system architecture is typical for gas and e-meters and many feature-rich water and heat meters.

The host MCU uses the serial commands, documented in HTML pages inside the software stack installer, to interface and control the CC13x0 wM-Bus device. This serial mode of operation can be also called a wM-Bus "network processor" or "RF module", as the entire wM-Bus stack is self-contained and no stack code is executed on the host MCU (except the serial command handling). This separation of the stack and the application in two different devices avoids any critical timing between the wM-Bus communication and the host application as they run in parallel and independent from each other.

注: The serial stack type together with any CC1350 hardware reference can replace any off-the-shelf wM-Bus RF module with OMSv3.0.1 functionality. This reference design focuses exclusively on the serial approach; the API solution is not reviewed.

On the right of ☒ 3 is the embedded- or API-type implementation—both the user application and the wM-Bus stack run together inside the CC13x0 device. For this case, the CCS IDE tool and the API documentation of the stack function calls are used. Because the serial commands parser code is not needed, the latter is not included into the stack to reduce the flash memory footprint on the CC13x0.

The wM-Bus API-type stack version is a perfect fit for HCAs (see the [TIDA-00848](#) and [TIDA-00838](#) reference designs), low-cost water meters, or electronic RF add-on modules (see the [TIDA-01228](#) reference design), where the complete product application including the wM-Bus stack will fit into the available 128kB Flash with 20-kB SRAM + 8kB cache RAM.

The ultra-low-power Sensor Controller Engine (SCE) of the CC1350 is not used in the wM-Bus stack and, if desired, can be programmed with user code. Examples for ultra-low-power tasks for the SCE can be found in multiple TI reference designs: the single-chip HCA reference design ([TIDA-00848](#)) as well as the two-chip HCA reference designs ([TIDA-00646](#) and [TIDA-00838](#)). Furthermore, the [TIDA-01212](#) reference design shows a half-duplex, bidirectional, single IR LED communication while the [TIDA-01228](#) reference design introduces an inductive (or LC-sensing) approach of a small rotating disc, commonly used in mechanical water and gas meters.

注: The open source example code for wM-Bus, provided together within all of the aforementioned reference designs, is *not* the same as the wM-Bus stack presented here. These reference designs have coding examples under an "open source" license and, even if they do support the S-, T-, C-, F-, or all N-modes, they do not implement the specific OMS timing requirements nor the full feature set of the OMSv3.0.1 specification.

2.4 System Design Theory

The EN13757-4 includes the implementation of a wM-Bus at a 868-MHz band, where a maximum of 25-mW effective radiated power (ERP) is allowed, except for the high power sub-band around 869.525 MHz with 500 mW, where a C2-mode data collector transmits. Due to this limited transmit power, S-, T-, and C-mode meter devices achieve the typical home area network range inside residential or office buildings. This solution has been chosen by Germany and The Netherlands as the wireless communication standard for their smart meter rollouts.

The seven narrowband N-modes (Na through Ng) in the 169-MHz ISM band, where 500-mW ERP is possible as per ERC7003, are also part of EN13757-4. This enables deployment of neighbor area networks (NANs) or even metropolitan area networks (MANs), due to the wireless link coverage of up to 2 km in dense urban areas. This solution has been chosen as the technology for gas and water meters in France as well as for gas meters in Italy. The 169-MHz solution is supported by TI through the high-performance CC1120 family and multiple MSP43x MCUs, but it is not possible on the CC1350 (nor on CC1310) due to a lack of 169-MHz band hardware support, which is outside the scope of this reference design.

2.4.1 CC1350 Hardware Solutions

Besides the CC1350 LaunchPad, there are many other TI hardware reference designs for CC13x0 that accommodate all three different CC13x0 device packages (4x4, 5x5, or 7x7 mm). Any CC13x0 package can be combined with the so-called Integrated Passive Component (IPC), which replaces the discrete Balun and RF filter circuitry for the radio, as described in the CC1310 application report⁴⁹.

The IPC solution is an excellent way to achieve the smallest possible PCB size, much simpler layout and less variation in RF performance in the 868-MHz band. TI has partnered with two vendors who offer matched balun filter components for CC13x0 devices for the 779- to 928-MHz band. The Murata LFB18868MBG9E212 and Johanson 0850BM14E0016 are pin-compatible parts that reduce the component count significantly while still obtaining high radio performance. The IPC reference design matches the performance of the discrete *multi-layer* inductor reference design with a single component.

If best-in-class RF performance is desired, then the discrete *wire-wound* inductors solution is recommended, as used on the CC1350 or CC1310 LaunchPad.

2.4.2 wM-Bus Software Stack Customization

The serial-type stack version needs access to the two UART pins. Depending on the CC13x0 package and hardware reference design used, this functionality may be assigned to different pins, which requires a minor change in the hardware abstraction layer (HAL) of the software stack. This reference design has been tested only with the CC1350 LaunchPads and requires a CC1350 PG2.1 (Rev. B) chip device to support the dedicated T- or C-mode and S-mode patches.

3 Hardware, Software, Testing Requirements, and Test Results

3.1 Required Hardware and Software

All these software tools are free and can be downloaded from TI.com (except the PC GUI tool).

3.1.1 Hardware

Use either of the following choices:

- [CC1350 LaunchPad](#) (two boards)
- [CC1310 LaunchPad](#) (two boards)

Both LaunchPad types are available for purchase through the TI online store or authorized distributors. There are no royalties pay when using the TI wM-Bus OMSv3.0.1 stack with CC13x0 devices in a consumer product.

3.1.2 Software

- [FlashProgrammer2](#) or [UniFlash4.2.x](#)
- wM-Bus Suite (PC GUI) for configuration of wM-Bus devices
- CCSv7.2.0.00013 or later (the IDE for CC13xx wireless MCUs) is required only when using the embedded or API version of the stack to combine the stack and user application into a single device. If necessary, customize the serial interface pins to the host MCU in the serial stack version.

3.2 Testing and Results

3.2.1 Test Setup

3.2.1.1 Programming CC1350 LaunchPads

The provided binary images (also contained in the TI wM-Bus stack) have to be flashed into the CC1350 devices. This reference design uses two LaunchPads: one configured as a "meter" and the other as a "data collector" device.

The first step is to select the desired wM-Bus mode of operation (for example, T2-mode_ and program the CC1350 LaunchPads with "Serial_CC13xx_Collector_T2.out" and "Serial_CC13xx_Meter_T2.out", respectively. The "Serial_CC13xx_Collector_T2.out" binary image has been flashed with the FlashProgrammer2 Tool onto the CC1350 LaunchPad (see [Figure 4](#)).

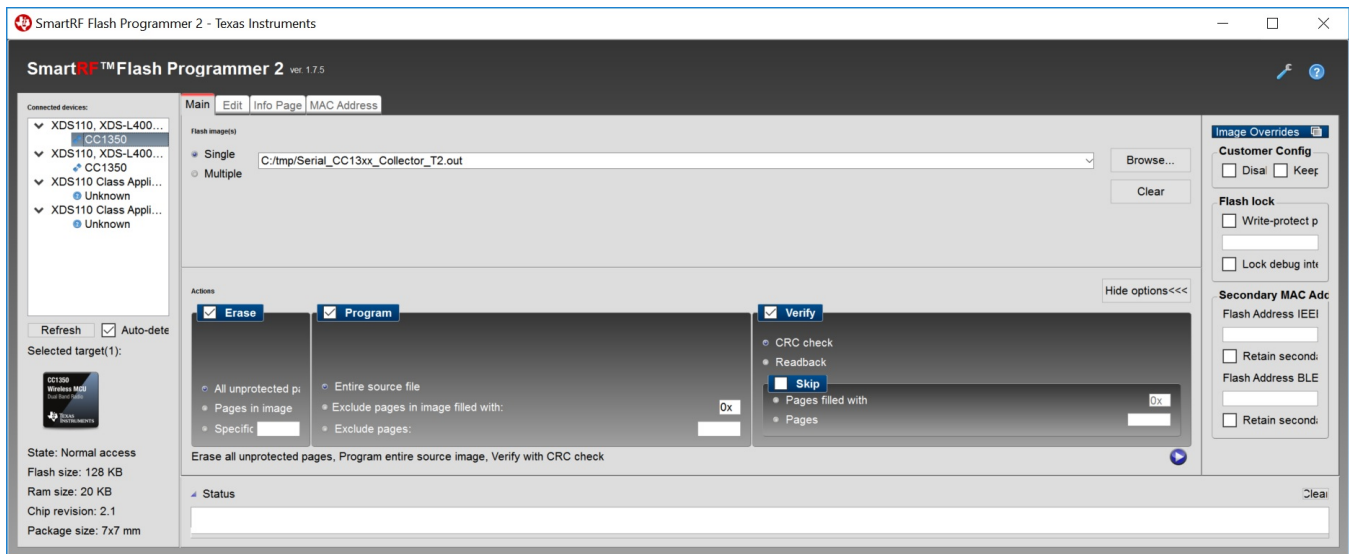


図 4. TI wM-Bus Stack (Data Collector Binary) Programming of CC1350 LaunchPad

Alternatively, the UniFlash v.4.2.0.1435 or later can be used as well (see 図 5). The first step is again to select the serial image (for the desired S-, T-, or C-mode), and then load the meter binary image into the first CC1350 LaunchPad and the data collector binary image into the second.

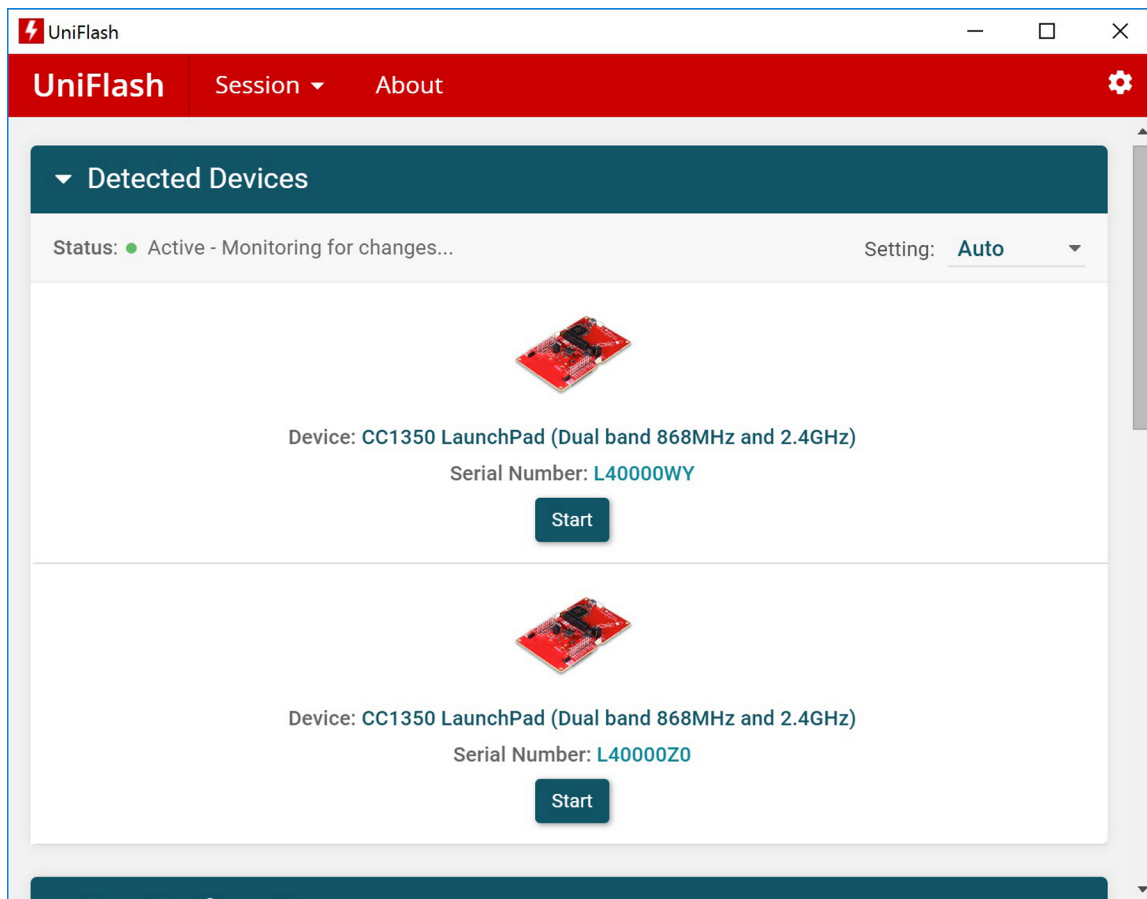
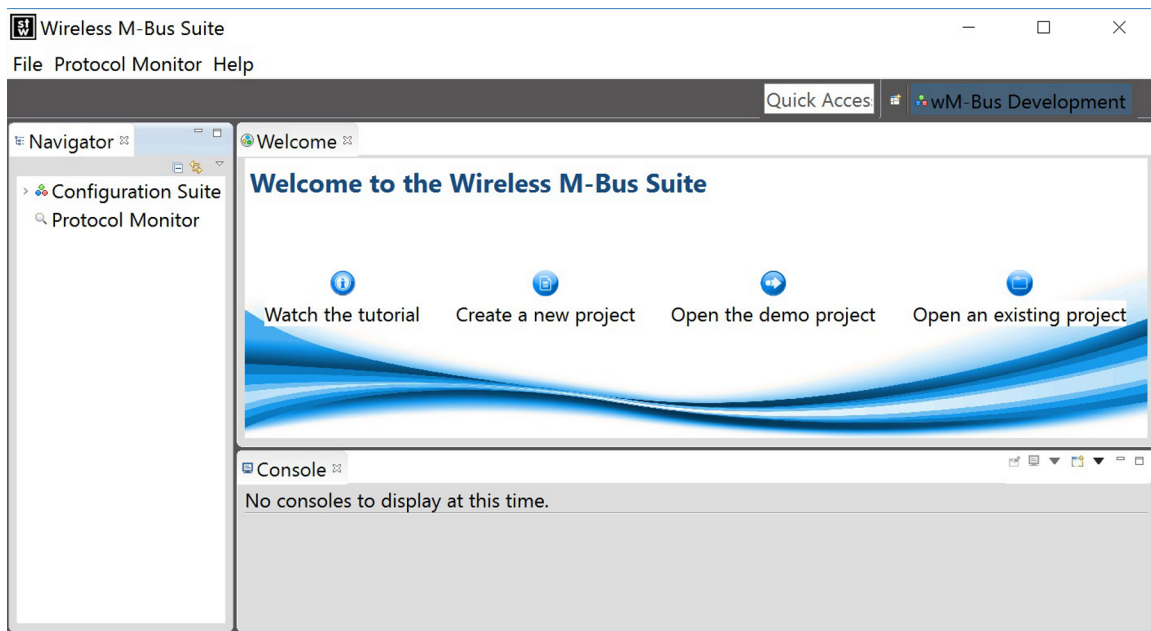


図 5. UniFlash v4.2 With Two CC1350LP Boards (for Meter and Data Collector)

The two freshly programmed CC1350 LaunchPads must stay connected (using the USB cable) to the PC for the next steps.

3.2.1.2 Starting the PC GUI Configuration Tool

A special Java-based tool, named Wireless M-Bus Suite by STACKFORCE GmbH (formerly Steinbeis or STZEDN), is used to configure and monitor the wM-Bus meter and data collector devices. There is a Flash video example at the "Watch the tutorial" button to the left, which quickly runs through the main functions of the PC GUI tool (see 6). The tool itself implements many of the serial commands into an easy-to-use graphical interface. As described in the stack online documentation, the serial commands are visible to the user in the so-called console window, where the command flow to and from the GUI are logged.



6. Wireless M-Bus Suite Start Screen

Start with "Open the demo project" and then select the "Smart Meter" entry on the left side (see 7). Then click on the blue and white circle "Start wireless M-Bus demo" to run a scan of the serial COM ports.

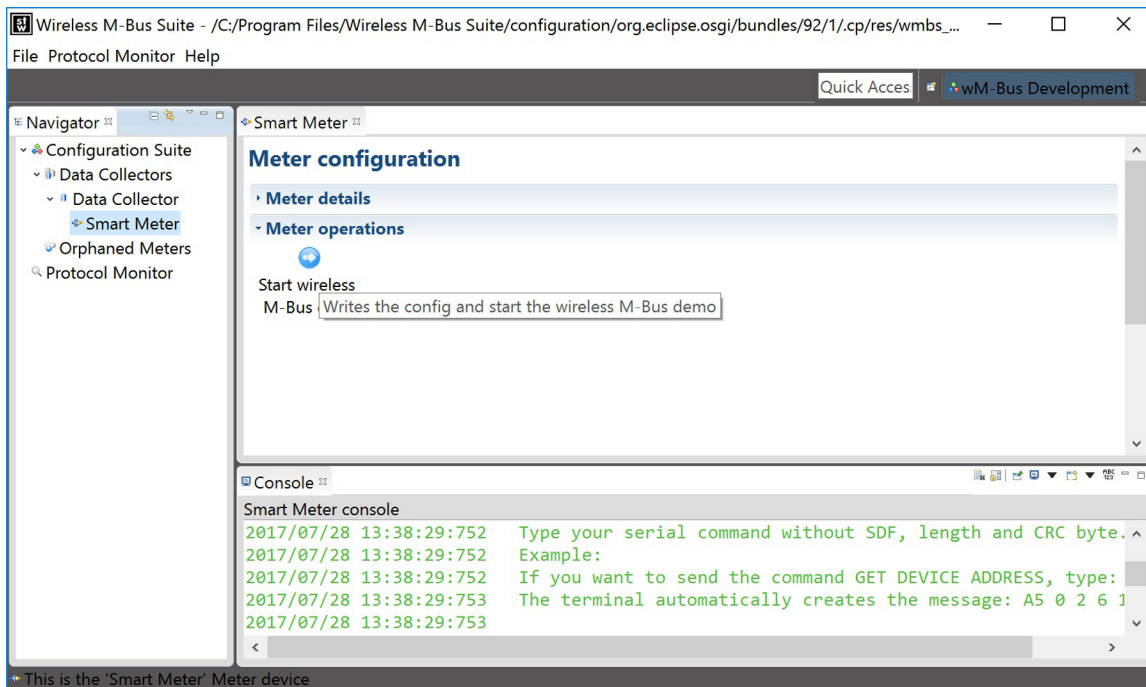


図 7. Start Auto-Detection of Connected wM-Bus Devices (UART Over USB)

All connected wM-Bus devices (through USB) are auto-detected; in this case, two are listed (meter and data collector). Next, select the "Meter" device and "Finish" the initialization process for the meter.

3.2.1.3 Binding the Meter to the Data Collector

The next step is to select the data collector entry in the Navigator pane (just above "Smart Meter"). Choose the already detected data collector (by the COM port scan) and then check the box "Smart Meter". This check box replaces the "Installation" procedure and the two devices are now bound to each other (meaning these devices recognize each other's encryption key and device address) and can exchange data.

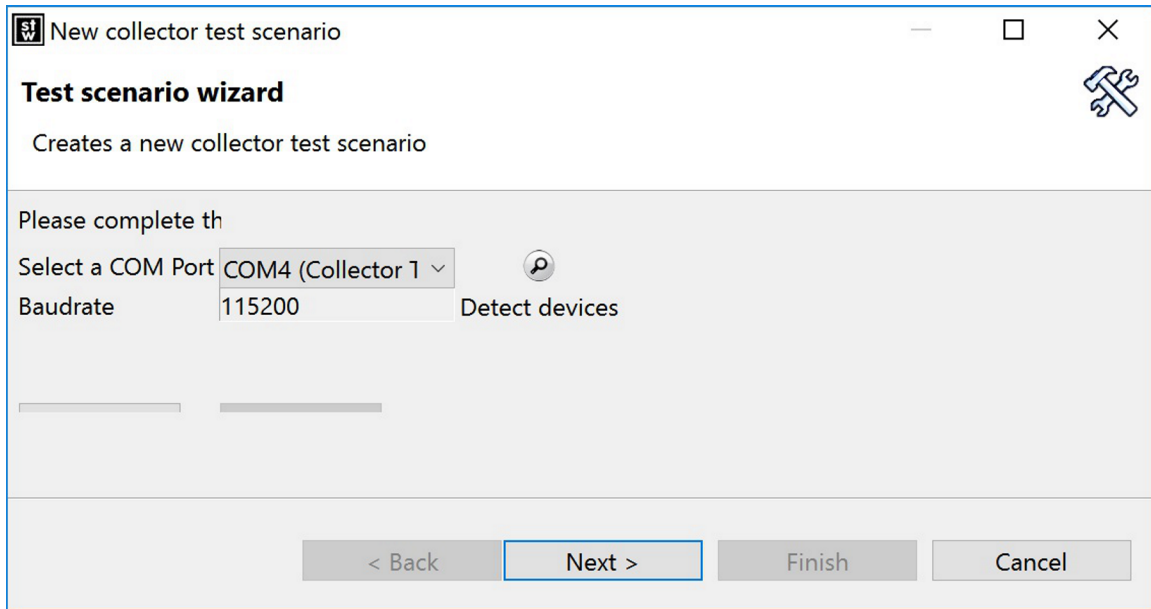


図 8. Select Data Collector Entry

This binding is equivalent to the installation of the meter to the data collector. The PC GUI tool enables the monitoring and control of the wM-Bus devices with Serial support; in fact, the PC GUI tool can be viewed as a "Host MCU", which sends serial commands to and receives indications from the meter and data collector units.

Using the PC GUI tool, bind or "install" as shown in 図 9.

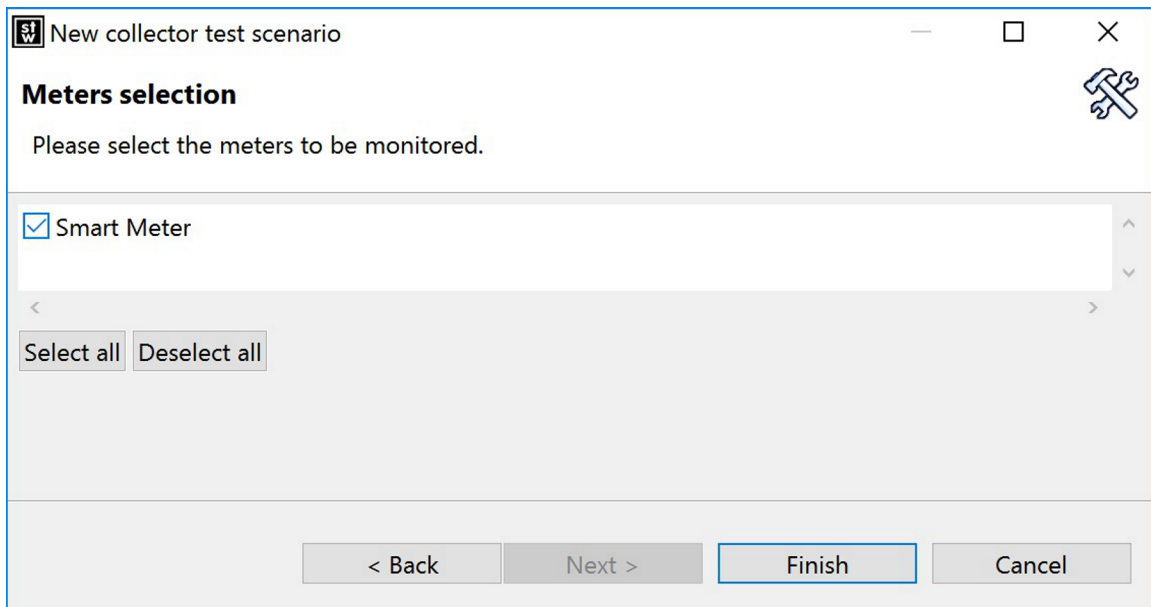


図 9. Binding of Meter and Data Collector With PC Tool

Finally, when both the meter and the data collector are correctly configured and launched, the PC tool resembles 図 10.

注: The Data Collector window tabs were arranged by moving them to the right through clicking and dragging.

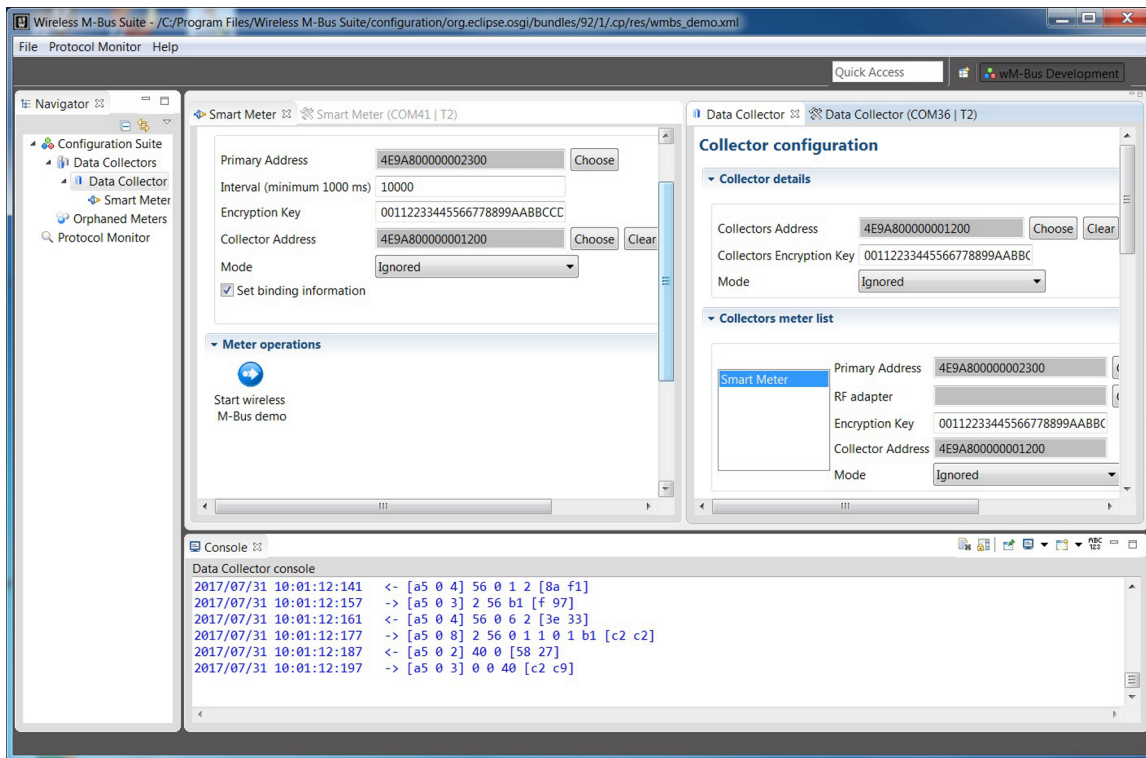


図 10. Fully Configured Meter and Data Collector Device in PC Tool

It is important to know that a new console can be started using the symbols on the console tab to the right. The currently active console can be pinned (see symbol in the console tab) to the current device. Then a new (second) console window can be started and assigned to the data collector device (not shown in 図 10).

3.2.1.4 Configuring the Data Collector

The data collector unit needs its own configuration as well; the default values get automatically configured by the wM-Bus demo project inside the PC GUI tool. The data collector configuration on the right top in 図 10 shows the two parameters that can be configured: the address and the encryption key. Also the meter list with already associated meters is displayed; here the default meter device is listed.

The PC GUI tool supports up to three meters in parallel by using additional CC13x0 hardware and programming with a meter binary. Next, each additional meter must get configured manually as a smart meter under the Device list in the Navigator tab. Finally, the data collector must be restarted, and the pop-up window will ask which of the configured meters must be connected (or "installed").

If all meters are selected in the Configuration window, then the data collector can receive their data packets and show them in the "Received data content" window; otherwise, the data packets get automatically discarded by the stack.

3.2.1.5 Customizing the Meter and Data Collector Parameters

According to the wM-Bus protocol, the meters periodically send out reading data, which can be collected in a data collector (stationary setup) or a handheld unit (for a drive-by read-out). The interval (10,000 ms shown) between these periodic data packets can be modified using the PC GUI, and the data transmission is encrypted with encryption mode 5 using the 16-byte key "001122...FF" as shown in [Figure 11](#).

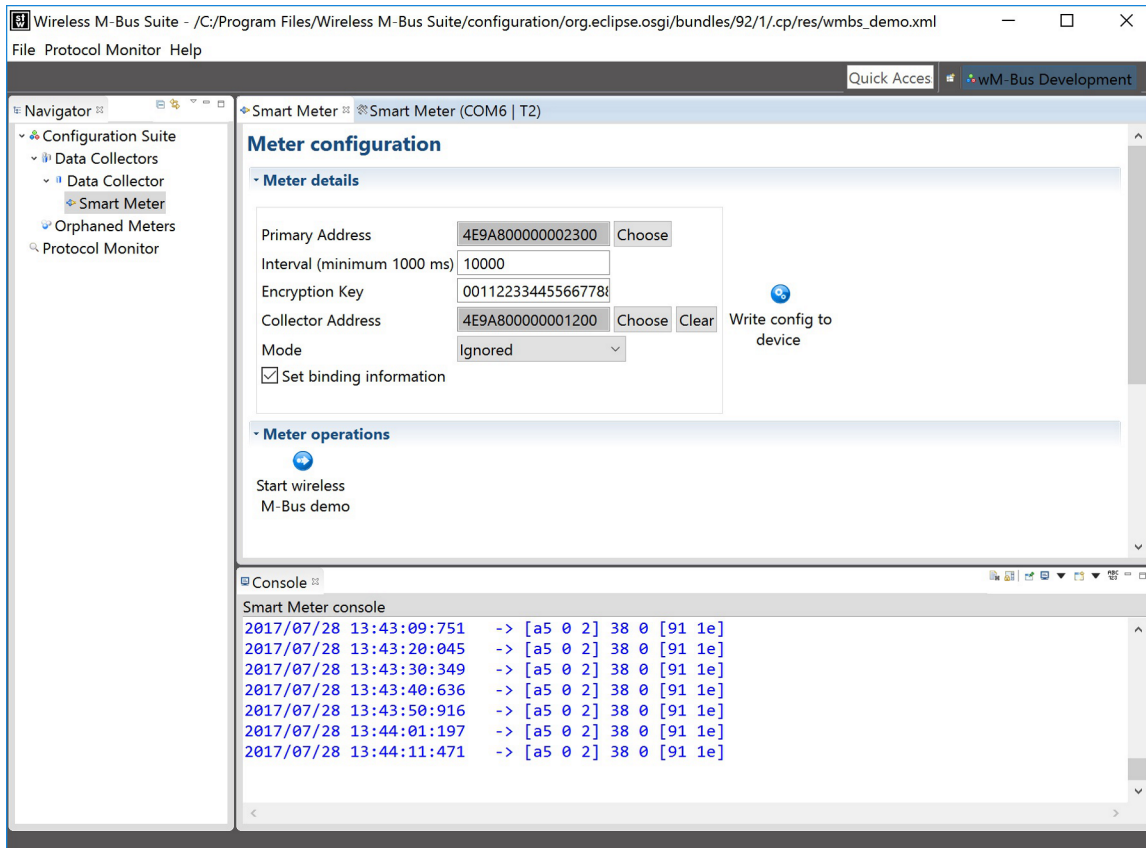


Figure 11. Meter Parameters Setup

3.2.1.5.1 Meter Address

The meter address must be unique per meter, and that is the responsibility of the smart meter vendor. The address format is: first 2 bytes for the vendor name (or manufacturer identification as per DLMS association), 4 bytes for BCD-coded identification or serial number, 1 byte for the version, and 1 byte for device type identification.

Texas Instruments has its own vendor code, TIS, as listed [here](#).

The conversion of the string "TIS" to a 2-byte number is done according to EN13757-3 using the ASCII table value and the following:

- First letter = "T" = (54h-40h) = 0x14 = **20d**
- Second letter = "I" = **9d**
- Third letter = "S" = **19d**; where (40h = 64d)
- or "TIS" = $32 \times 32 \times 20 + 32 \times 9 + 19 = 20787d = 5133h$

All address subfield parameters can be modified or set manually and then written to the device using the "Write config to device" button on the right. If additional meter devices need to be added to the test setup, then perform the following:

- Add the new meter device under the "Data Collector" entry in the Configuration suite (left column in the PC GUI tool)
- Configure the new meter manually by adding its address and encryption key with the address of the data collector.
- Close both data collector tabs in the PC GUI tool and restart the demo to detect the data collector device. Then bind it to the two meters.

注: The PC GUI tool is limited to three meters—this is a software limitation only. The TI wM-Bus OMSv3.0.1 software stack for the data collector itself supports up to 16 meter devices. This number can be further increased (requires stack customization and verification), based on free memory resources and the processing time at the data collector side, where the full meter list has to be parsed very quickly during the reception of a data packet to identify the meter and retrieve its encryption key. For example, in T2-mode, the data collector has to start transmission of the packet (preamble bits) in the time slot of 2 to 3 ms after the last transmitted bit of the meter packet (see EN13757-4).

3.2.1.5.2 Encryption Key

The encryption key for Mode 5 (mandatory for OMSv3.0.1) has 16 bytes, where at least 8 bytes of this key are different for each meter. The key must be assigned by the manufacturer and transferred safely together with the meter to the customers. This key has to be added to the data collector during the installation (by "out of band" means) to enable decryption of the meter data. At the same time, the meter device must also recognize the key of the data collector to decrypt its data packets (typically through a configuration tool during meter installation). In the PC tool, both devices use the same key (by default), but this can be modified if necessary.

3.2.1.6 Data Packet Types in wM-Bus

There four message types for the data exchange in OMSv3.0.1, which are explained in the following subsections. All of them apply to bidirectional meters, while unidirectional meters can only support some of these types. The C-field (Control) declares the message types and conforms to the unbalanced C-fields of EN60870-5-2 (source OMSv3.0.1). The C-field is 1 byte and comprises four separate bit-fields and one 4-bit function field (LSB), full details are found in the telecontrol equipment and systems[®] specification.

3.2.1.6.1 Synchronous Transmission (Spontaneous Messages Without Reply)

Unidirectional meters such as HCAs or electronic water meter add-on modules periodically transmit their consumption data. All meters must implement a mode of operation, called synchronous transmission, that is required to support battery-powered data collectors or repeaters, which only switch on their receivers for predicted short time windows.

The spontaneous messages without replies are the most popular data packets, which are used by all meters, including unidirectional ones. The interval parameter, which is set for each meter, defines the period between two transmitted packets. Table 1 in the OMS3.0.1 "Volume 2 Primary communication" document defines a maximum of 90 min for a S-mode and 15 min for a T-mode meter. Based on the defined formula, the data collector must receive at least two synchronous data packets before it can calculate the next transmission. To do that with a reasonable failure rate, it is recommended to have a continuous reception of six intervals. Thus for T-mode, $6 \times 15 \text{ min} = 90 \text{ min}$ of receive mode operation for the data collector is sufficient after the meter installation. Later, the data collector goes in receive mode just a few milliseconds before the expected transmission time of each associated Meter.

The synchronous data packets must set the Bit S in the Configuration word and increase the access number (ACC-field) for each successive data packet.

As per OMS, only message types SND-NR (C=0x44 = Send/No Reply), ACC_DMD (C=0x48 = Access Demand) or ACC-NR (C=0x47 = Access/No Reply) can be synchronous.

3.2.1.6.2 Clock Synchronization (Commands to the Meter With Acknowledge)

There are also certain limits for the timing deviation for the meters in the OMS 3.0.1 so for bidirectional meters; for example, they need to use Annex F of OMS3.0.1. The clock synchronization is only applied to meters with a valid encryption key, to avoid any risk of unauthorized manipulation. There are two types of data packets defined: first with CI=0x6C "set new date and time", and the CI=0x6D "Add/Subtract Time offset", which the data collector can transmit. The bidirectional meter has to acknowledge the reception of such a clock synchronization packet, even if the timing correction is not applied. The meter is not obliged to use the encrypted time data; this is an optional feature.

3.2.1.6.3 Data Requests With Response From Slave to Master

According to OMSv3.0.1, the data collector may generate multiple C-fields, which must be accepted or processed by the meter (or actuator) and answered with its own telegram. The "SND-UD" with a C-field of 0x53 or 0x73 means "Send User Data", and the meter responds with an "ACK" data packet. The "REQ-UD1" with C-field = 0x5A or 0x7A means "Request User Data Class 1" or "Alarm Request" and shall be answered by the meter with ACK or RSP-UD data packets. The data request "REQ-UD2" with C-field=0x5B or 0x7B means "Request User Data Class 2" and requires an answer of type "RSP-UD".

3.2.1.6.4 Special Messages for Installation or Alarm

As mentioned in 3.2.1.3, the OMS 3.0.1 specification describes an installation process where the installation type of data packets (with C = 0x46) are sent out by the meter periodically (only after a manual event, for example, push installation button) until a timeout occurs or the installation procedure executes as expected. This means that the data collector replies with C = 0x06 data packet, confirming the correct installation of the meter.

For an alarm condition, the meter has 1 status byte for the coding of various alarm conditions, conformant to EN13757-3. This byte is part of the application layer and can be used with specific CI-field, the latter indicates the main data packet function and the type of coding (such as application protocol) used for the rest of the data packet.

3.2.1.6.5 Data Exchange Between Meter and Data Collector

Figure 12 shows a list of the received and decoded data in the Data Collector tab (COM4 | T2). See that CI field = 0x7A, 8-byte packet length, and the receive time stamp; the data packet contents can be viewed by clicking on the "Details" field to the right.

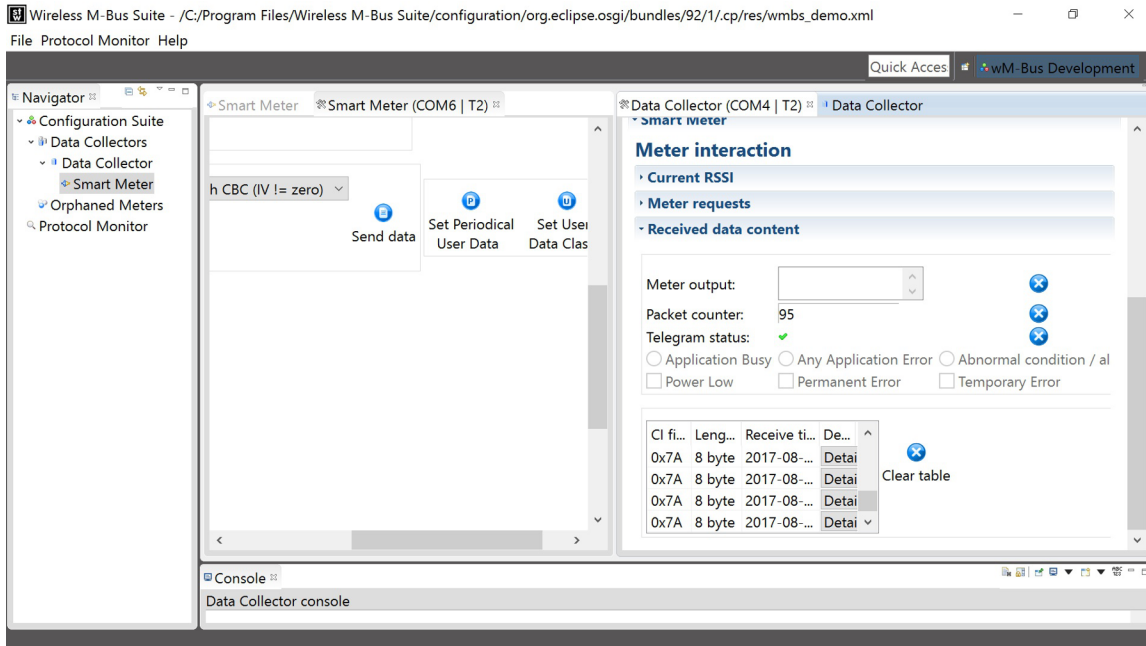


Figure 12. Unidirectional Periodic Data From Meter

The default packet content is at "0" and has a time stamp of "01-01-2000" because the time of the meter device has not been updated by the data collector yet.

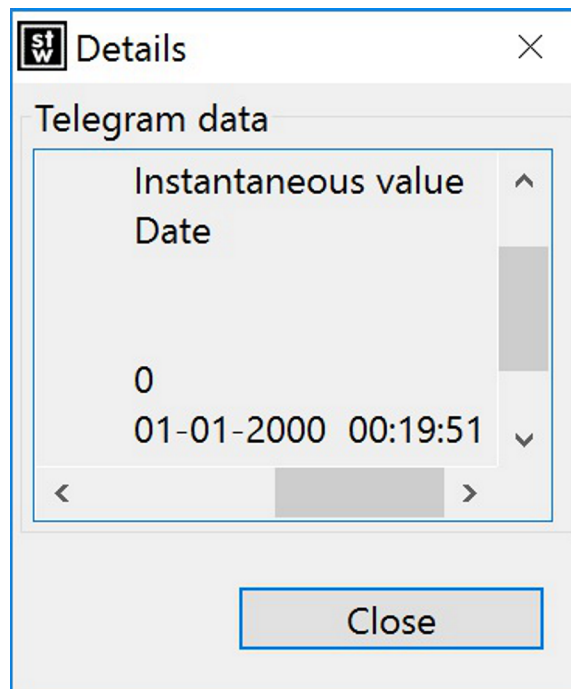
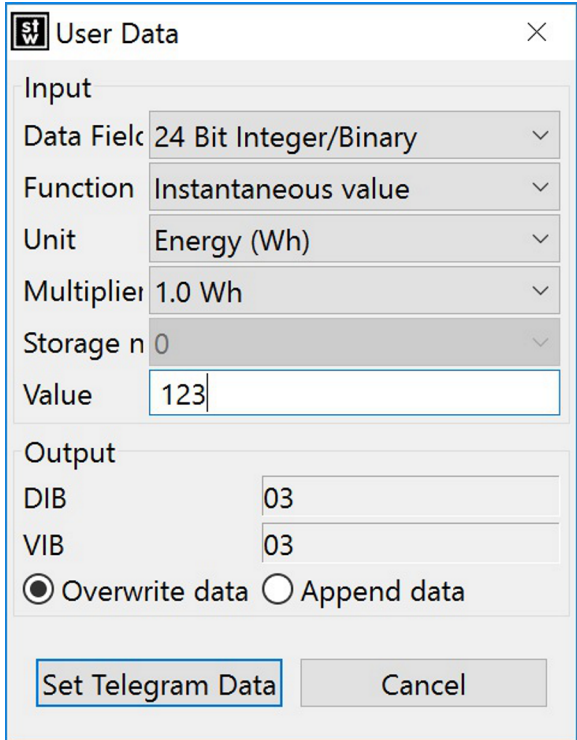


Figure 13. Default "0" Value Meter Data Packet

Now, to transmit the real-world data, the user has to adjust the value in the data packet, which is done by selecting the "Set Periodical user Data" under the Smart Meter (COM 6| T2) tab. After making the changes to the Data Field, Function, Unit, Multiplier, and Value parameters, press "Set Telegram Data" to save these values. In , the value of 123 Wh in a 24-bit Integer representation has been chosen.

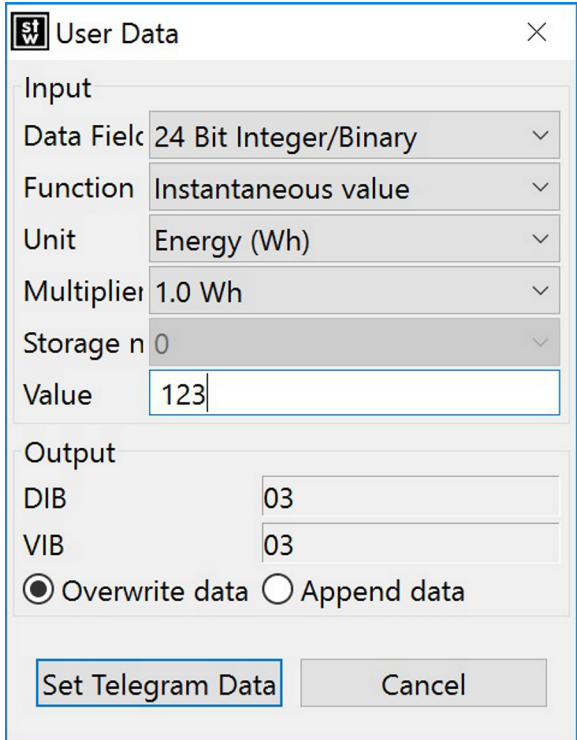
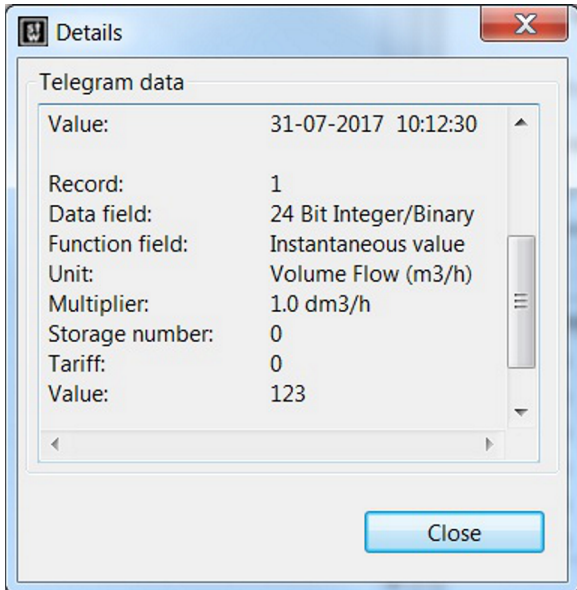


図 14. Modified "123" Energy Value for Meter Data Packet

This new value is used in the next periodic (or synchronous) data packet of the meter, which is received and decoded by the data collector (see ). Note that the time has been synched, as the decoded packet shows the actual time, starting with the date "31-07-2017".

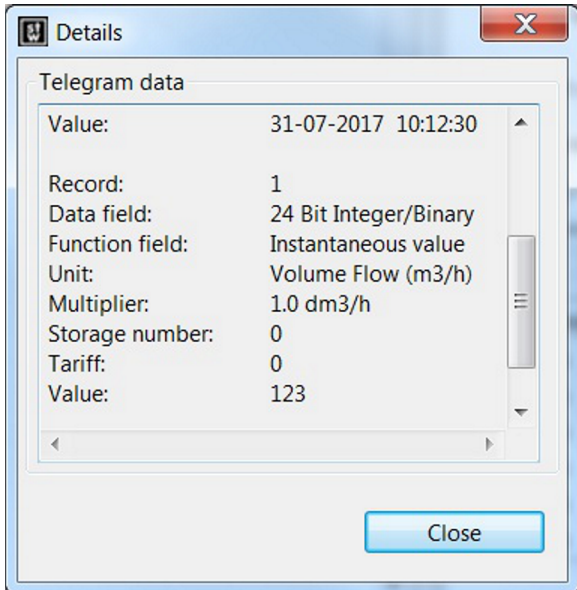


図 15. Data Packet With Synchronized Time and User Defined Content

3.2.1.6.6 Time Synchronization by the Data Collector

After adapting the telegram content, run the time synchronization procedure. This is initiated in the Data Collector tab (COM4 | T2) under "Meter requests" (see [Figure 16](#)):

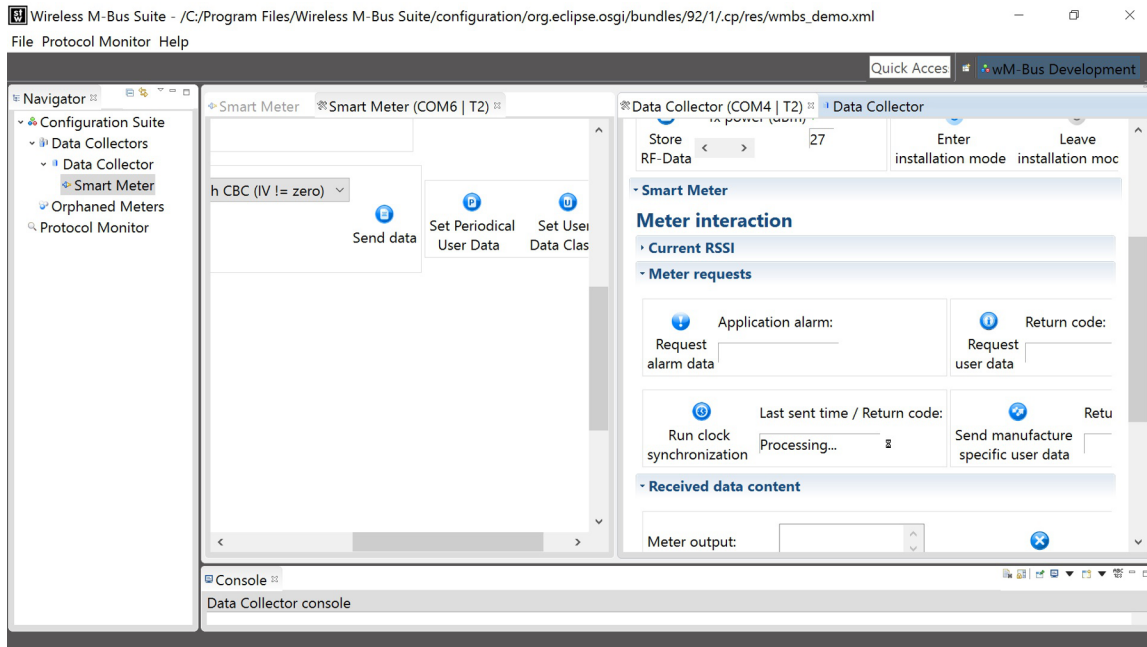


Figure 16. Time Synchronization in Progress

[Figure 16](#) shows that this does not happen immediately (see "Processing...") but is delayed until the next data packet of the meter is received. The data collector in T2-mode has to send the Time Synchronization request in the very short receive window of 2 to 3 ms after the T-mode transmission frame, as this is the only period where the T2-mode meter is listening to receive data. If this request from the data collector is received by the meter, then a short exchange of a few telegrams takes place. At the end, the GUI shows "Passed" with a green check sign behind.

Beginning with the next telegram, the meter uses the actual date and time, which is in fact the PC time where the PC GUI is running. This is also visible under "Details" for the newly received data packets from the meter (see [Figure 15](#)).

3.2.1.7 Serial Interface Overview

The wM-Bus Stack has been developed with the idea that a serial communication is always started by the host controller (for example, sending a request). However, events can be called by the radio module to indicate, for example, when a data packet has been received. Furthermore, all commands transmitted by the host controller over UART must be replied by the radio module; otherwise, this could indicate a hardware or software problem.

3.2.1.7.1 Binary Command Format

Each command comprises three parts: header, data part, and a footer, where the header has always the value of 0xA5 and is used as a Start Frame Delimiter (SFD), followed by a 2-byte length (MSB) that sums all bytes following the length field. The 1-byte type field is the last part of the header and describes the data after the header (the second part). The CRC16 is the third part and is built as per EN13757-4; to calculate the cyclic redundancy check (CRC), the first 3 bytes (SFD + 2-byte length) are excluded.

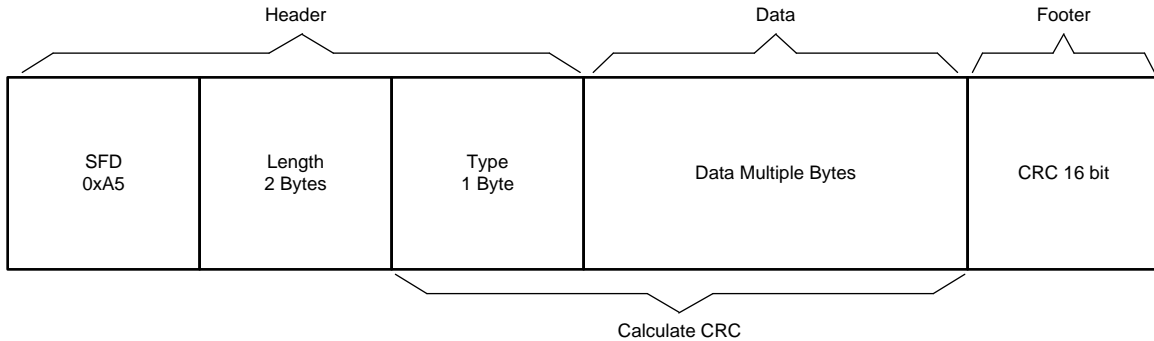


図 17. Commands Format Used in Serial Version of TI wM-Bus Stack (by STACKFORCE GmbH)

The command data is transferred over the UART connection to or from the CC13x0 using the format of 115.2kbps, no flow control, and 8N1 (8 data bits, no parity, 1 stop bit).

Note that the UART connection on the CC1350 LaunchPad runs over a USB cable as a COM port and can be accessed with any PC terminal program.

3.2.1.7.2 CRC Field

To protect the serial commands from manipulation or data corruption, a checksum field of 2 bytes is used. This CRC field is computed over the Type and the Data bytes only (SFD and the following two length bytes are excluded).

The formula or the CRC polynomial is:

$$x^{16} + x^{13} + x^{12} + x^{11} + x^{10} + x^8 + x^6 + x^5 + x^2 + 1 \tag{1}$$

The initial value is 0, and the final CRC is complemented.

An open source C-code example implementation for such a CRC calculation is found in the firmware of the [TIDA-00848](#) or [TIDA-01228](#) reference designs:

```

/*
 * Filename: crc.c
 *
 * Description:   calculates CRC16 as per EN13757-4
 *
 * Copyright (C) 2008 Texas Instruments Incorporated - http://www.ti.com/
 *
 *
 * Redistribution and use in source and binary forms, with or without
 * modification, are permitted provided that the following conditions
 * are met:
 *
 *   Redistributions of source code must retain the above copyright
 *   notice, this list of conditions and the following disclaimer.
 *
 *   Redistributions in binary form must reproduce the above copyright
 *   notice, this list of conditions and the following disclaimer in the
 *   documentation and/or other materials provided with the

```

```

*   distribution.
*
*   Neither the name of Texas Instruments Incorporated nor the names of
*   its contributors may be used to endorse or promote products derived
*   from this software without specific prior written permission.
*
*   THIS SOFTWARE IS PROVIDED BY THE COPYRIGHT HOLDERS AND CONTRIBUTORS
*   "AS IS" AND ANY EXPRESS OR IMPLIED WARRANTIES, INCLUDING, BUT NOT
*   LIMITED TO, THE IMPLIED WARRANTIES OF MERCHANTABILITY AND FITNESS FOR
*   A PARTICULAR PURPOSE ARE DISCLAIMED. IN NO EVENT SHALL THE COPYRIGHT
*   OWNER OR CONTRIBUTORS BE LIABLE FOR ANY DIRECT, INDIRECT, INCIDENTAL,
*   SPECIAL, EXEMPLARY, OR CONSEQUENTIAL DAMAGES (INCLUDING, BUT NOT
*   LIMITED TO, PROCUREMENT OF SUBSTITUTE GOODS OR SERVICES; LOSS OF USE,
*   DATA, OR PROFITS; OR BUSINESS INTERRUPTION) HOWEVER CAUSED AND ON ANY
*   THEORY OF LIABILITY, WHETHER IN CONTRACT, STRICT LIABILITY, OR TORT
*   (INCLUDING NEGLIGENCE OR OTHERWISE) ARISING IN ANY WAY OUT OF THE USE
*   OF THIS SOFTWARE, EVEN IF ADVISED OF THE POSSIBILITY OF SUCH DAMAGE.
*
*/

#include "crc.h"
#include <stdint.h>

//-----
//
//   uint16 crcCalc(uint16 crcReg, uint8 crcData)
//
//   DESCRIPTION:
//     Calculates the 16-bit CRC. The function requires that the CRC_POLYNOM
//     is defined, which gives the wanted CRC polynom.
//
//   ARGUMENTS:
//     uint8  crcData - Data to perform the CRC-16 operation on.
//     uint16 crcReg  - Current or initial value of the CRC calculation
//
//   RETURN:
//     The value returned is the 16-bit CRC (of the data supplied so far).
//-----
//-----

uint16_t crcCalc(uint16_t crcReg, uint8_t crcData)
{
    uint8_t i;

    for (i = 0; i < 8; i++)
    {
        // If upper most bit is 1
        if (((crcReg & 0x8000) >> 8) ^ (crcData & 0x80))
            crcReg = (crcReg << 1) ^ CRC_POLYNOM;
        else
            crcReg = (crcReg << 1);

        crcData <<= 1;
    }

    return crcReg;
}
// CRC_POLYNOM          0x3D65

```

3.2.2 Test Results

A basic test of the stack binary images has been done against an RC1180-MBUS3 kit from Radiocrafts. The synchronous data packet transmissions in T- and S-mode are captured successfully, and the data content is displayed correctly when using the MBUS-DEMO software by Radiocrafts.

In addition, by using the TI Smart RF Studio 7 tool with XML configuration file for TC-modes reception, it is possible to receive the "over the air" data as well. Here, a fixed length setting longer than the expected wM-Bus packet must be used because SRF7 Studio is not able to decode the wM-Bus length byte "on the fly" and calculate dynamically the length of the wM-Bus data packet.

Additional, extensive tests with varying packet lengths for all modes are done by STACKFORCE GmbH during the stack validation process. Also, the timing requirements are measured and verified, such as the time critical 2- to 3-ms response window of the T-mode data collector with 16 associated or installed meters.

One difference that has been implemented and verified is the long header requirement for S1- and S2-mode in the OMSv3.0.1 document. According to EN13757-4, both short and long headers in S2-mode are possible; the TI stack follows the OMS specification while the latter requires long headers.

The H_T class for transmitter performance in EN13757-4 requires a minimum ERP of 5 dB for a meter and 8 dBm for others (or a data collector) in S-, T-, or C-modes (R-mode is not supported by the stack). Both CC1350 and CC1310 meet this requirement, with the typical 14 dBm at the antenna input with combined TX and RX paths in any of the S-, T-, and C-modes.

The H_R class for receiver performance is more challenging to meet because both the minimum RX sensitivity and RX selectivity criteria must meet.

In S-mode, the sensitivity is -111 dBm for an 80% PER, 20-byte payload and thus better than the required -105 dBm typical value. The measured S-mode selectivity (using a 196-kHz RX filter bandwidth) is better than 40 dB at a ± 200 -kHz offset and above (see Table 5 and Table 6 in the application report *CC13xx wM-Bus S-Mode[®]*).

For T-mode, the sensitivity is -105 dBm for 1% BER; for C-mode, it is -106.3 dBm at 1% BER (see Table 7 and Table 9 in the application report *CC13xx Combined wM-Bus C-Mode and T-Mode[®]*). Both values meet the common target of -105 dBm typical sensitivity at 1% BER for a T- or C-mode receiver.

The measured selectivity for the T- and C-mode patch is > 40 dB at a ± 200 -kHz offset and above as shown in [表 1](#):

表 1. Measurement Results of T- and C-Mode Selectivity (Selectivity in dB)

OFFSET (kHz)	T-MODE	C-MODE
-400	40.5	40.8
-300	40.8	41.0
-200	40.8	41.0
200	43.3	43.4
300	44.8	45.0
400	46.0	46.1

Thus CC1350 and CC1310 fulfill the H_R receiver class requirements as per EN13757-4 for sensitivity and selectivity. Note that the immunity requirements as per EN 301 489 are measured at the full system level and thus no statement can be made on the CC13x0 subsystem level.

Both S-mode and CT-mode patches have been integrated into the TI stack and are being automatically involved, depending on the wM-Bus mode used. For example, in a T2-mode meter binary, the TI Stack uses the CT-mode patch for transmitting data and then change to the S-mode patch in receive direction. The switch between the patches happens fast enough to enable S-mode data reception in 2 ms after the last bit of the T-mode data packet has been transmitted.

4 Design Files

4.1 Schematics

To download the schematics, see the design files at [CC1350 LaunchPad](#).

4.2 Bill of Materials

To download the bill of materials (BOM), see the design files at [CC1350 LaunchPad](#) and [TIDA-01531](#).

4.3 PCB Layout Recommendations

4.3.1 Layout Prints

To download the layer plots, see the design files at [CC1350 LaunchPad](#) and [TIDA-01531](#).

4.4 CAD Project

To download the CAD project files, see the design files at [CC1350 LaunchPad](#) and [TIDA-01531](#).

4.5 Gerber Files

To download the Gerber files, see the design files at [CC1350 LaunchPad](#) and [TIDA-01531](#).

4.6 Assembly Drawings

To download the assembly drawings, see the design files at [CC1350 LaunchPad](#) and [TIDA-01531](#).

5 Software Files

To download the software files, see the design files at [CC1350 LaunchPad](#) and [TIDA-01531](#).

6 Related Documentation

1. Beuth, [Communication systems for meters and remote reading of meters - Part 4: Wireless meter readout \(Radio meter reading for operation in SRD bands\)](#)
2. Beuth, [Telecontrol equipment and systems - Part 5: Transmission protocols - Section 2: Link transmission procedures \(EN60870-5-2 or IEC 870-5-2\)](#)
3. Texas Instruments, [CC1310 Integrated Passive Component for 779-928 MHz](#), Application Report (SWRA524)
4. Texas Instruments, [CC1350 SimpleLink™ Ultra-Low-Power Dual-Band Wireless MCU](#), Datasheet (SWRS183)
5. Texas Instruments, [CC1310 SimpleLink™ Ultra-Low-Power Sub-1 GHz Wireless MCU](#), Datasheet (SWRS181)
6. Texas Instruments, [CC13xx Combined wM-Bus C-Mode and T-Mode](#), Application Report (SWRA522)
7. Texas Instruments, [CC13xx wM-Bus S-Mode](#), Application Report (SWRA512)
8. Texas Instruments, [CC-Antenna-DK2 and Antenna Measurements Summary](#), Application Report (SWRA496)
9. Radiocrafts, [wM-Bus Products](#) (<https://radiocrafts.com/products/wirelessmbus/>)

6.1 商標

LaunchPad, SimpleLink, Code Composer Studio are trademarks of Texas Instruments.
Cortex, ARM are registered trademarks of ARM Ltd.
Bluetooth is a registered trademark of Bluetooth SIG.
Wi-Fi is a registered trademark of Wi-Fi Alliance.

すべての商標および登録商標はそれぞれの所有者に帰属します。

7 About the Author

MILEN STEFANOV (M.Sc.E.E) is a system engineer at TI, working in the field of Grid Infrastructure and an expert in RF communication technologies and sub-metering applications. After graduating, he spent 5 years as a research assistant at the Chemnitz University of Technology (TUC) and 3.5 years in the semiconductor industry in high-speed optical and wired communications as a system engineer. He joined TI in 2003 to become a Wi-Fi® expert and support TI's Wi-Fi products at major OEMs; since 2010, he has focused on metering and Sub-1 GHz RF solutions for the European Grid Infrastructure market. Milen Stefanov has published multiple articles on wM-Bus technology in Europe and presented technical papers at the Wireless Congress and Smart Home & Metering summits in Munich.

TIの設計情報およびリソースに関する重要な注意事項

Texas Instruments Incorporated ("TI")の技術、アプリケーションその他設計に関する助言、サービスまたは情報は、TI製品を組み込んだアプリケーションを開発する設計者に役立つことを目的として提供するものです。これにはリファレンス設計や、評価モジュールに関する資料が含まれますが、これらに限られません。以下、これらを総称して「TIリソース」と呼びます。いかなる方法であっても、TIリソースのいずれかをダウンロード、アクセス、または使用した場合、お客様(個人、または会社を代表している場合にはお客様の会社)は、これらのリソースをここに記載された目的にのみ使用し、この注意事項の条項に従うことに合意したものとします。

TIによるTIリソースの提供は、TI製品に対する該当の発行済み保証事項または免責事項を拡張またはいかなる形でも変更するものではなく、これらのTIリソースを提供することによって、TIにはいかなる追加義務も責任も発生しないものとします。TIは、自社のTIリソースに訂正、拡張、改良、およびその他の変更を加える権利を留保します。

お客様は、自らのアプリケーションの設計において、ご自身が独自に分析、評価、判断を行う責任がお客様にあり、お客様のアプリケーション(および、お客様のアプリケーションに使用されるすべてのTI製品)の安全性、および該当するすべての規制、法、その他適用される要件への遵守を保証するすべての責任をお客様のみが負うことを理解し、合意するものとします。お客様は、自身のアプリケーションに関して、(1) 故障による危険な結果を予測し、(2) 障害とその結果を監視し、および、(3) 損害を引き起こす障害の可能性を減らし、適切な対策を行う目的で、安全策を開発し実装するために必要な、すべての技術を保持していることを表明するものとします。お客様は、TI製品を含むアプリケーションを使用または配布する前に、それらのアプリケーション、およびアプリケーションに使用されているTI製品の機能性を完全にテストすることに合意するものとします。TIは、特定のTIリソース用に発行されたドキュメントで明示的に記載されているもの以外のテストを実行していません。

お客様は、個別のTIリソースにつき、当該TIリソースに記載されているTI製品を含むアプリケーションの開発に関連する目的でのみ、使用、コピー、変更することが許可されています。明示的または黙示的を問わず、禁反言の法理その他どのような理由でも、他のTIの知的所有権に対するその他のライセンスは付与されません。また、TIまたは他のいかなる第三者のテクノロジーまたは知的所有権についても、いかなるライセンスも付与されるものではありません。付与されないものには、TI製品またはサービスが使用される組み合わせ、機械、プロセスに関連する特許権、著作権、回路配置利用権、その他の知的所有権が含まれますが、これらに限られません。第三者の製品やサービスに関する、またはそれらを参照する情報は、そのような製品またはサービスを利用するライセンスを構成するものではなく、それらに対する保証または推奨を意味するものでもありません。TIリソースを使用するため、第三者の特許または他の知的所有権に基づく第三者からのライセンス、あるいはTIの特許または他の知的所有権に基づくTIからのライセンスが必要な場合があります。

TIのリソースは、それに含まれるあらゆる欠陥も含めて、「現状のまま」提供されます。TIは、TIリソースまたはその仕様に関して、明示的か暗黙的にかかわらず、他のいかなる保証または表明も行いません。これには、正確性または完全性、権原、続発性の障害に関する保証、および商品性、特定目的への適合性、第三者の知的所有権の非侵害に対する黙示的保証が含まれますが、これらに限られません。

TIは、いかなる苦情に対しても、お客様への弁済または補償を行う義務はなく、行わないものとします。これには、任意の製品の組み合わせに関連する、またはそれらに基づく侵害の請求も含まれますが、これらに限られず、またその事実についてTIリソースまたは他の場所に記載されているか否かを問わないものとします。いかなる場合も、TIリソースまたはその使用に関連して、またはそれらにより発生した、実際の、直接的、特別、付随的、間接的、懲罰的、偶発的、または、結果的な損害について、そのような損害の可能性についてTIが知らされていたかどうかにかかわらず、TIは責任を負わないものとします。

お客様は、この注意事項の条件および条項に従わなかったために発生した、いかなる損害、コスト、損失、責任からも、TIおよびその代表者を完全に免責するものとします。

この注意事項はTIリソースに適用されます。特定の種類の資料、TI製品、およびサービスの使用および購入については、追加条項が適用されます。これには、半導体製品(<http://www.ti.com/sc/docs/stdterms.htm>)、評価モジュール、およびサンプル(<http://www.ti.com/sc/docs/sampterm.htm>)についてのTIの標準条項が含まれますが、これらに限られません。