

TPS563210A Step-Down Converter Evaluation Module User's Guide



ABSTRACT

This user's guide contains information for the TPS563210A as well as support documentation for the TPS563210AEVM-663 evaluation module. Included are the performance specifications, schematic, and the bill of materials of the TPS563210AEVM-663.

Table of Contents

| | |
|--|----|
| 1 Introduction | 3 |
| 2 Performance Specification Summary | 4 |
| 3 Modifications | 5 |
| 3.1 Output Voltage Setpoint..... | 5 |
| 4 Test Setup and Results | 6 |
| 4.1 Input/Output Connections..... | 6 |
| 4.2 Start-Up Procedure..... | 6 |
| 4.3 Efficiency..... | 7 |
| 4.4 Load Regulation..... | 8 |
| 4.5 Line Regulation..... | 9 |
| 4.6 Load Transient Response..... | 9 |
| 4.7 Output Voltage Ripple..... | 10 |
| 4.8 Input Voltage Ripple..... | 11 |
| 4.9 Start-Up..... | 12 |
| 4.10 Shut-Down..... | 13 |
| 5 Board Layout | 14 |
| 5.1 Layout..... | 14 |
| 6 Schematic, Bill of Materials, and Reference | 16 |
| 6.1 Schematic..... | 16 |
| 6.2 Bill of Materials..... | 17 |
| 6.3 Reference..... | 18 |
| 7 Revision History | 18 |

List of Figures

| | |
|--|----|
| Figure 4-1. TPS563210AEVM-663 Efficiency..... | 7 |
| Figure 4-2. TPS563210AEVM-663 Light Load Efficiency..... | 7 |
| Figure 4-3. TPS563210AEVM-663 Load Regulation, 5 V Input..... | 8 |
| Figure 4-4. TPS563210AEVM-663 Load Regulation, 12 V Input..... | 8 |
| Figure 4-5. TPS563210AEVM-663 Line Regulation..... | 9 |
| Figure 4-6. TPS563210AEVM-663 Load Transient Response, 25% to 75% Load Step..... | 9 |
| Figure 4-7. TPS563210AEVM-663 Output Voltage Ripple, $I_{OUT} = 3$ A..... | 10 |
| Figure 4-8. TPS563210AEVM-663 Output Voltage Ripple, $I_{OUT} = 300$ mA..... | 10 |
| Figure 4-9. TPS563210AEVM-663 Output Voltage Ripple, $I_{OUT} = 0$ mA..... | 11 |
| Figure 4-10. TPS563210AEVM-663 Input Voltage Ripple, $I_{OUT} = 3$ A..... | 11 |
| Figure 4-11. TPS563210AEVM-663 Start-Up Relative to V_{IN} | 12 |
| Figure 4-12. TPS563210AEVM-663 Start-Up Relative to EN..... | 12 |
| Figure 4-13. TPS563210AEVM-663 Shut-Down Relative to V_{IN} | 13 |
| Figure 4-14. TPS563210AEVM-663 Shut-Down Relative to EN..... | 13 |
| Figure 5-1. Top Assembly..... | 14 |
| Figure 5-2. Top Layer..... | 15 |
| Figure 5-3. Bottom Layer..... | 15 |
| Figure 6-1. TPS563210AEVM-663 Schematic Diagram..... | 16 |

List of Tables

| | |
|--|----|
| Table 1-1. Input Voltage and Output Current Summary..... | 3 |
| Table 2-1. TPS563210AEVM-663 Performance Specifications Summary..... | 4 |
| Table 3-1. Output Voltages..... | 5 |
| Table 4-1. Connection and Test Points..... | 6 |
| Table 6-1. Bill of Materials..... | 17 |

Trademarks

D-CAP2™ is a trademark of Texas Instruments.

All trademarks are the property of their respective owners.

1 Introduction

The TPS563210A is a single, adaptive on-time, D-CAP2™ mode, synchronous buck converter requiring a very low external component count. The D-CAP2 control circuit is optimized for low-ESR output capacitors such as POSCAP, SP-CAP, or ceramic types and features fast transient response with no external compensation. The slow start time is externally programmable and there is a dedicated Power Good (PG) pin to aid in voltage monitoring and sequencing. The switching frequency is internally set at a nominal 650 kHz and enters Advanced Eco-mode in light load conditions. The high-side and low-side switching MOSFETs are incorporated inside the TPS563210A package along with the gate-drive circuitry. The low drain-to-source on resistance of the MOSFETs allows the TPS563210A to achieve high efficiencies and helps keep the junction temperature low at high output currents. The TPS563210A dc/dc synchronous converter is designed to provide up to a 3-A output from an input voltage source of 4.5 V to 17 V. The output voltage range is from 0.8 V to 6.5 V. Rated input voltage and output current ranges for the evaluation module are given in [Table 1-1](#).

The TPS563210AEVM-663 evaluation module (EVM) is a single, synchronous buck converter providing 1.05 V at 3 A from 4.5-V to 17-V input. This user's guide describes the TPS563210AEVM-663 performance.

Table 1-1. Input Voltage and Output Current Summary

| EVM | Input Voltage Range | Output Current Range |
|-------------------|---|----------------------|
| TPS563210AEVM-663 | $V_{IN} = 4.5 \text{ V to } 17 \text{ V}$ | 0 A to 3 A |

2 Performance Specification Summary

A summary of the TPS563210AEVM-663 performance specifications is provided in [Table 2-1](#). Specifications are given for an input voltage of $V_{IN} = 12\text{ V}$ and an output voltage of 1.05 V , unless otherwise noted. The ambient temperature is 25°C for all measurement, unless otherwise noted.

Table 2-1. TPS563210AEVM-663 Performance Specifications Summary

| Specifications | | Test Conditions | Min | Typ | Max | Unit |
|----------------------------------|-----------------------|--|-----|------|-----|------------------|
| Input voltage range (V_{IN}) | | | 4.5 | 12 | 17 | V |
| CH1 | Output voltage | | | 1.05 | | V |
| | Operating frequency | $V_{IN} = 12\text{ V}, I_O = 3\text{ A}$ | | 650 | | kHz |
| | Output current range | | 0 | | 3 | A |
| | Over current limit | $V_{IN} = 12\text{ V}, L_O = 1.5\text{ }\mu\text{H}$ | | | | A |
| | Output ripple voltage | $V_{IN} = 12\text{ V}, I_O = 3\text{ A}$ | | 20 | | mV _{PP} |

3 Modifications

These evaluation modules are designed to provide access to the features of the TPS563210A. Some modifications can be made to this module.

3.1 Output Voltage Setpoint

To change the output voltage of the EVMs, it is necessary to change the value of resistor R1. Changing the value of R1 can change the output voltage above 0.765 V. The value of R1 for a specific output voltage can be calculated using [Equation 1](#).

$$R1 = \frac{R2 \times (V_{OUT} - 0.765 \text{ V})}{0.765 \text{ V}} \quad (1)$$

[Table 3-1](#) lists the R1 values for some common output voltages. Note that the values given in [Table 3-1](#) are standard values and not the exact value calculated using [Table 3-1](#).

Table 3-1. Output Voltages

| Output Voltage (V) | R1 (kΩ) | R2 (kΩ) | L1 (μH) | | | C5 + C6 + C7 (μF) |
|-----------------------|------------|------------|------------|-----|-----|----------------------|
| | | | Min | Typ | Max | |
| 1.0 | 3.09 | 10.0 | 1.5 | 2.2 | 4.7 | 20 - 68 |
| 1.05 | 3.74 | 10.0 | 1.5 | 2.2 | 4.7 | 20 - 68 |
| 1.2 | 5.76 | 10.0 | 1.5 | 2.2 | 4.7 | 20 - 68 |
| 1.5 | 9.53 | 10.0 | 1.5 | 2.2 | 4.7 | 20 - 68 |
| 1.8 | 13.7 | 10.0 | 1.5 | 2.2 | 4.7 | 20 - 68 |
| 2.5 | 22.6 | 10.0 | 2.2 | 3.3 | 4.7 | 20 - 68 |
| 3.3 | 33.2 | 10.0 | 2.2 | 3.3 | 4.7 | 20 - 68 |
| 5.0 | 54.9 | 10.0 | 3.3 | 4.7 | 4.7 | 20 - 68 |
| 6.5 | 75.0 | 10.0 | 3.3 | 4.7 | 4.7 | 20 - 68 |

4 Test Setup and Results

This section describes how to properly connect, set up, and use the TPS563210AEVM-663. The section also includes test results typical for the evaluation modules and efficiency, output load regulation, output line regulation, load transient response, output voltage ripple, input voltage ripple, start-up, and switching frequency.

4.1 Input/Output Connections

The TPS563210AEVM-663 is provided with input/output connectors and test points as shown in [Table 4-1](#). A power supply capable of supplying 3 A must be connected to J1 through a pair of 20-AWG wires. The load must be connected to J2 through a pair of 20-AWG wires. The maximum load current capability is 3 A. Wire lengths must be minimized to reduce losses in the wires. Test point TP1 provides a place to monitor the V_{IN} input voltages with TP2 providing a convenient ground reference. TP7 is used to monitor the output voltage with TP8 as the ground reference.

Table 4-1. Connection and Test Points

| Reference Designator | Function |
|----------------------|---|
| J1 | V_{IN} (see Table 1-1 for V_{IN} range) |
| J2 | V_{OUT} , 1.05 V at 3-A maximum |
| JP1 | EN control. Shunt EN to GND to disable, shunt EN to V_{IN} to enable. |
| TP1 | V_{IN} positive monitor point |
| TP2 | GND monitor test point |
| TP3 | EN test point |
| TP4 | Switch node test point |
| TP5 | Test point for loop response measurements |
| TP6 | V_{OUT} positive monitor point |
| TP7 | GND monitor test point |

4.2 Start-Up Procedure

1. Ensure that the jumper at JP1 (Enable control) pins 1 and 2 are covered to shunt EN to GND, disabling the output.
2. Apply appropriate V_{IN} voltage to VIN (J1-2) and GND (J1-1). See [Table 1-1](#) for V_{IN} voltage range.
3. Move the jumper at JP1 (Enable control) from pins 1 and 2 (EN and GND), to pins 2 and 3 (EN and V_{IN}) enabling the output.

4.3 Efficiency

Figure 4-1 shows the efficiency for the TPS563210AEVM-663 at an ambient temperature of 25°C.

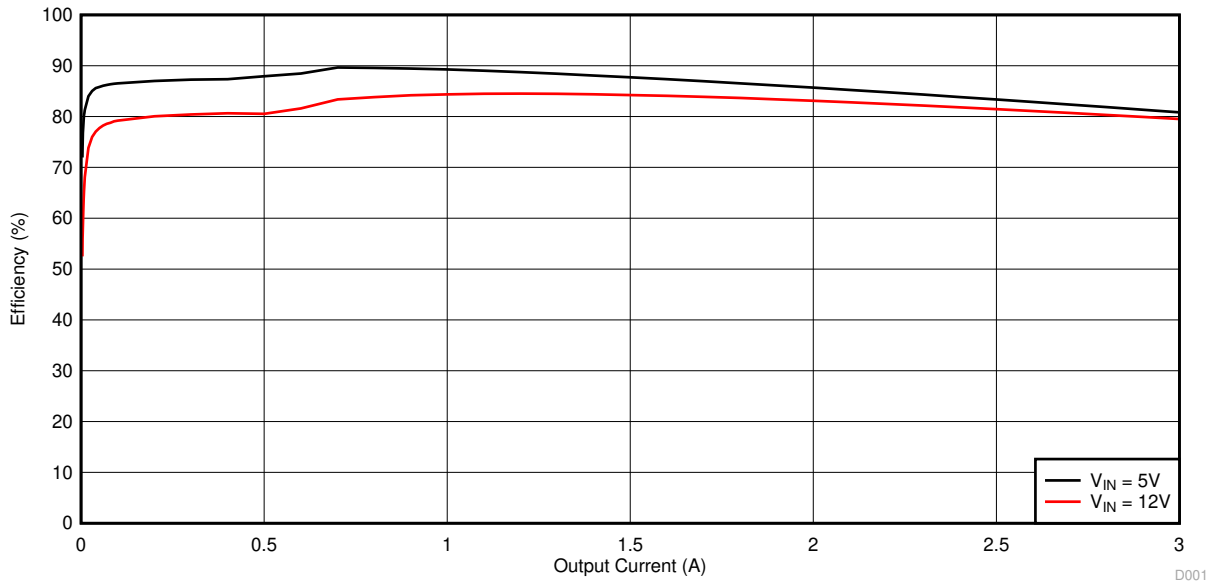


Figure 4-1. TPS563210AEVM-663 Efficiency

Figure 4-2 shows the efficiency at light loads for the TPS563210AEVM-663 at an ambient temperature of 25°C.

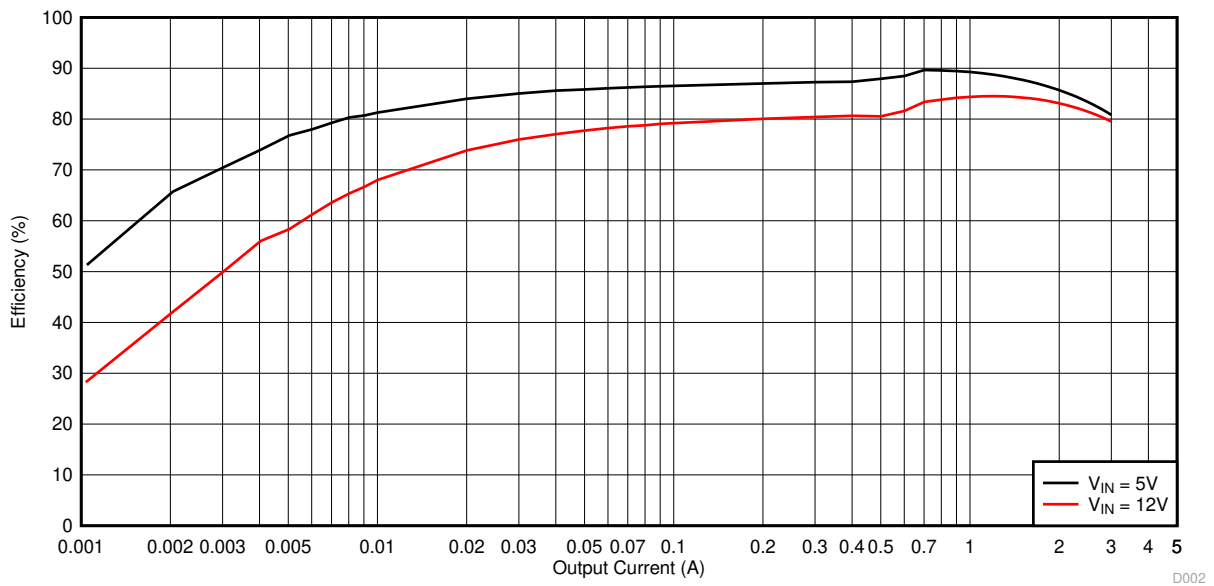


Figure 4-2. TPS563210AEVM-663 Light Load Efficiency

4.4 Load Regulation

The load regulation for the TPS563210AEVM-663 is shown in [Figure 4-3](#) and [Figure 4-4](#).

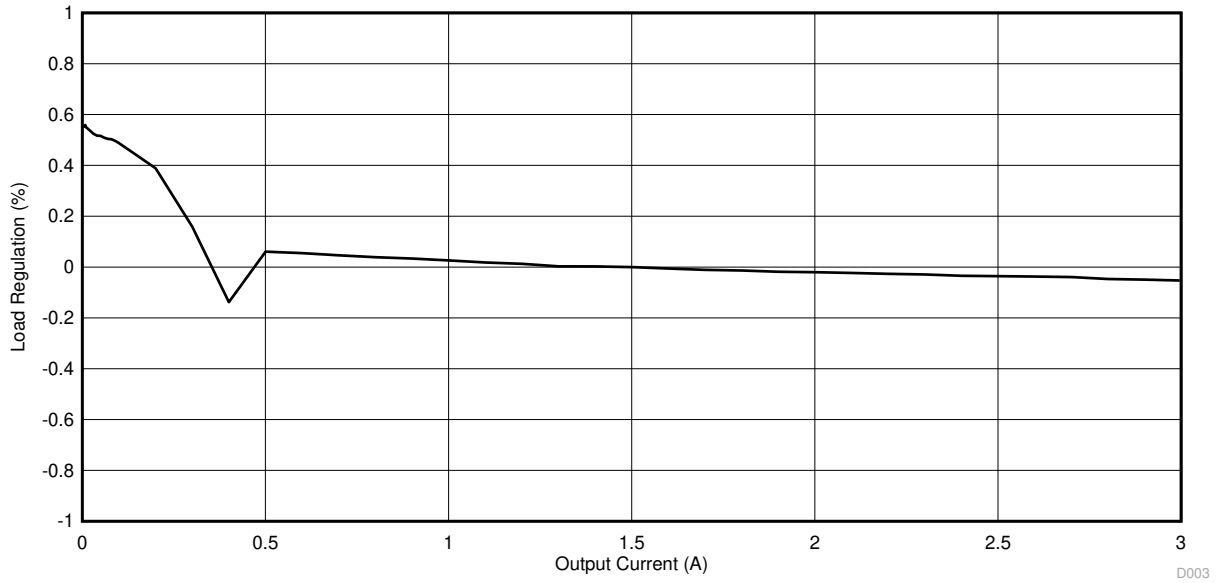


Figure 4-3. TPS563210AEVM-663 Load Regulation, 5 V Input

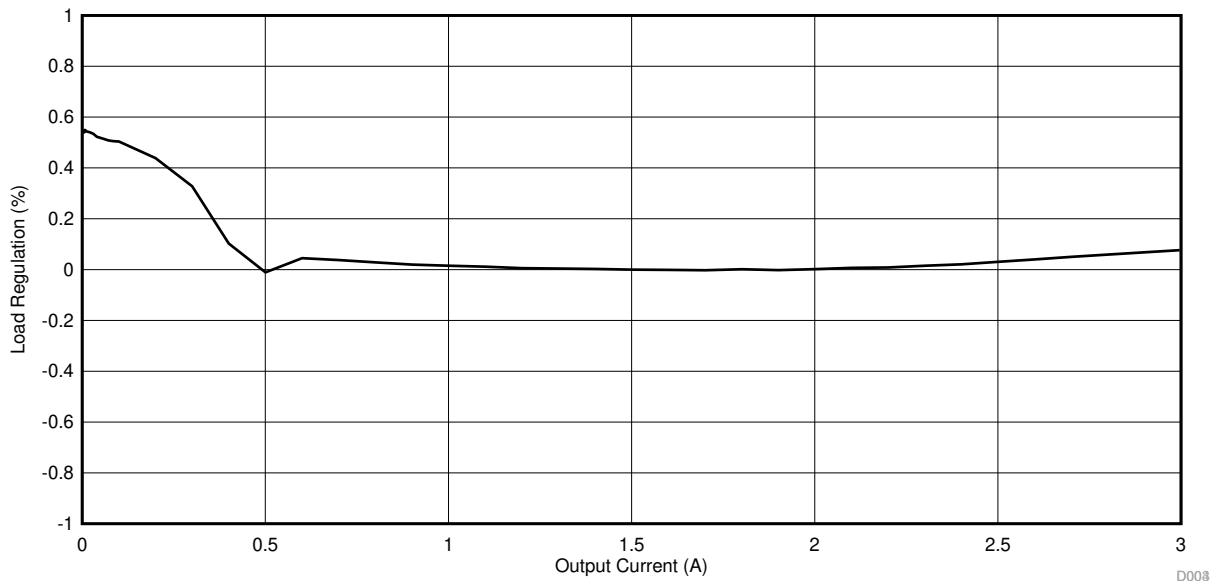


Figure 4-4. TPS563210AEVM-663 Load Regulation, 12 V Input

4.5 Line Regulation

The line regulation for the TPS563210AEVM-663 is shown in Figure 4-5.

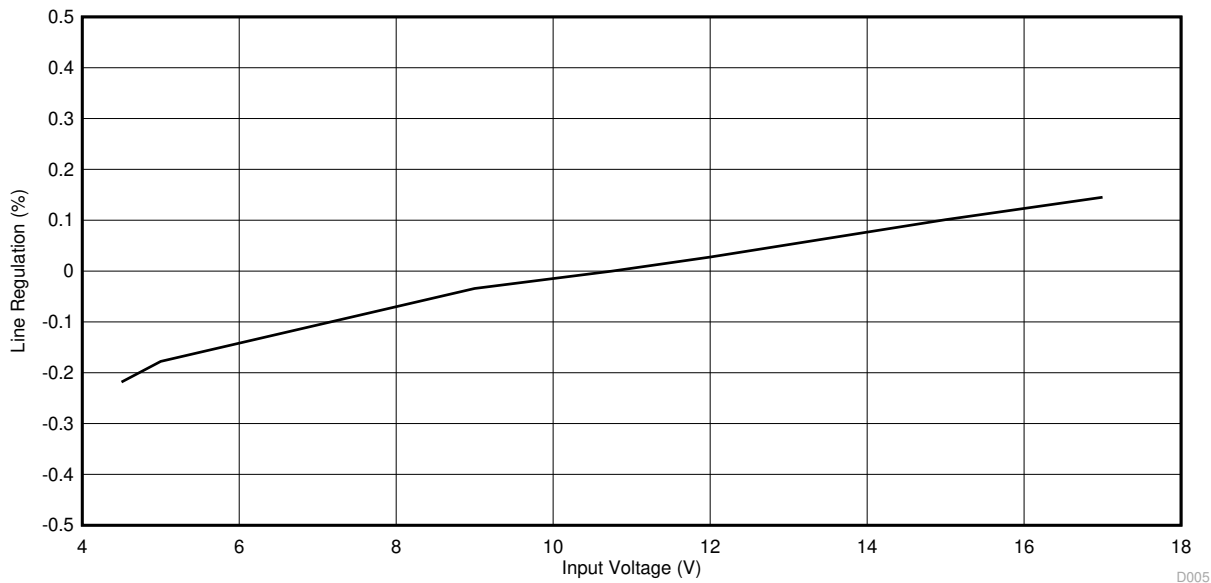


Figure 4-5. TPS563210AEVM-663 Line Regulation

4.6 Load Transient Response

The TPS563210AEVM-663 response to load transient is shown in Figure 4-6. The current steps and slew rates are indicated in the figures. Total peak-to-peak voltage variation is as shown.

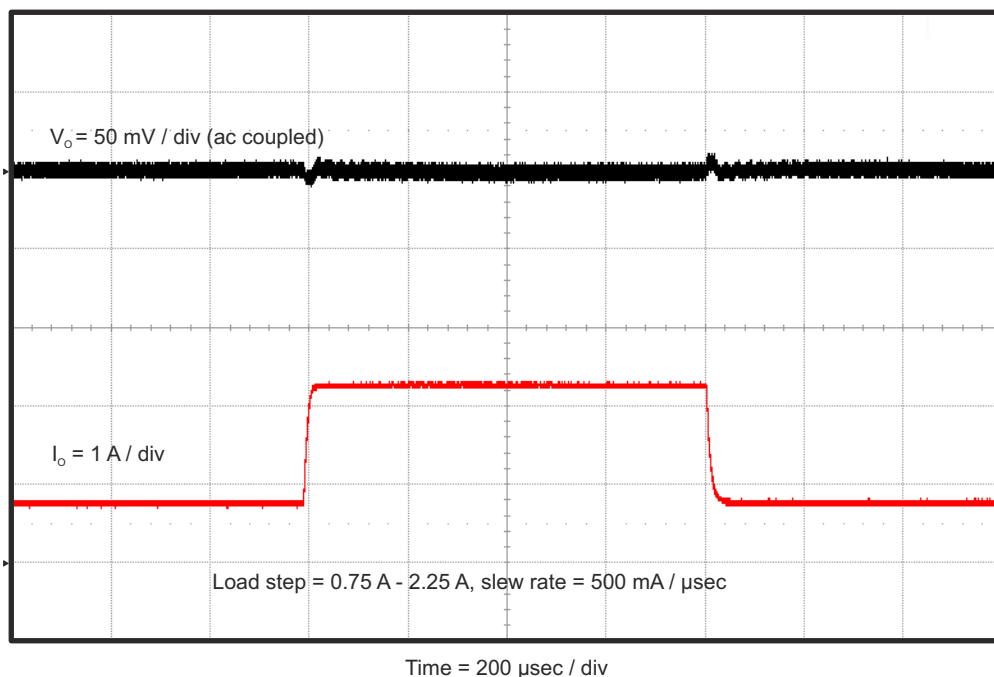


Figure 4-6. TPS563210AEVM-663 Load Transient Response, 25% to 75% Load Step

4.7 Output Voltage Ripple

The TPS563210AEVM-663 output voltage ripple is shown in Figure 4-7, Figure 4-8, and Figure 4-9. The output currents are as indicated.

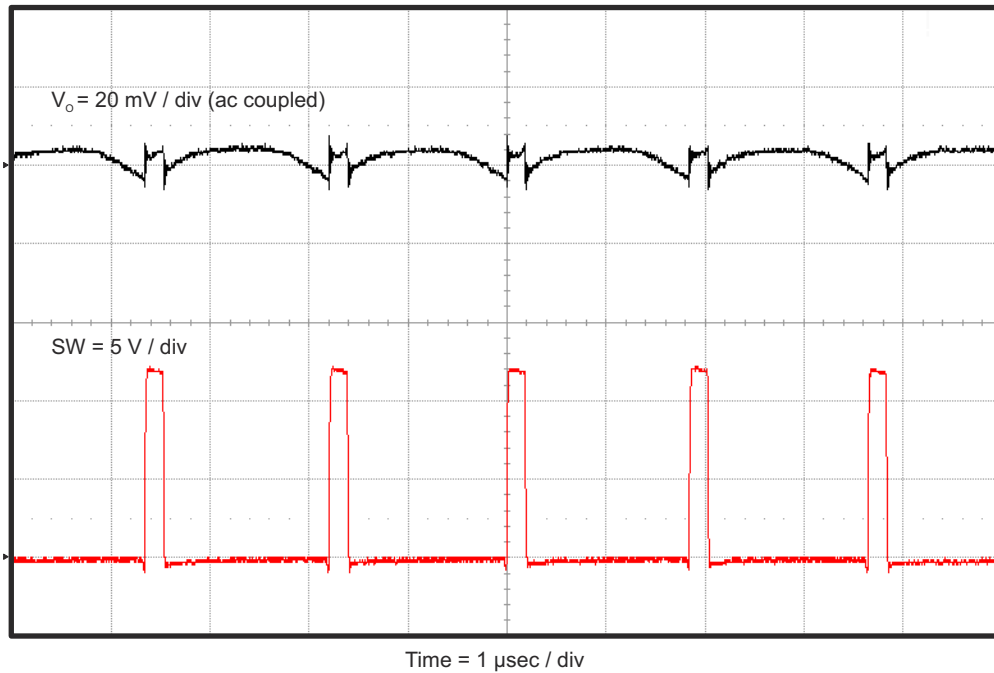


Figure 4-7. TPS563210AEVM-663 Output Voltage Ripple, $I_{OUT} = 3 \text{ A}$

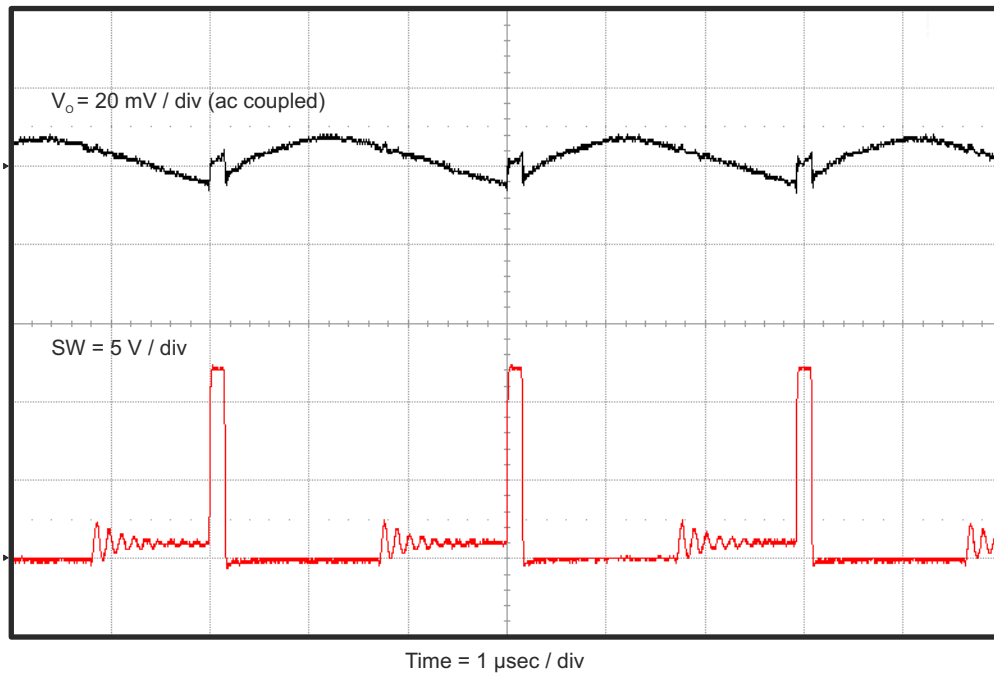


Figure 4-8. TPS563210AEVM-663 Output Voltage Ripple, $I_{OUT} = 300 \text{ mA}$

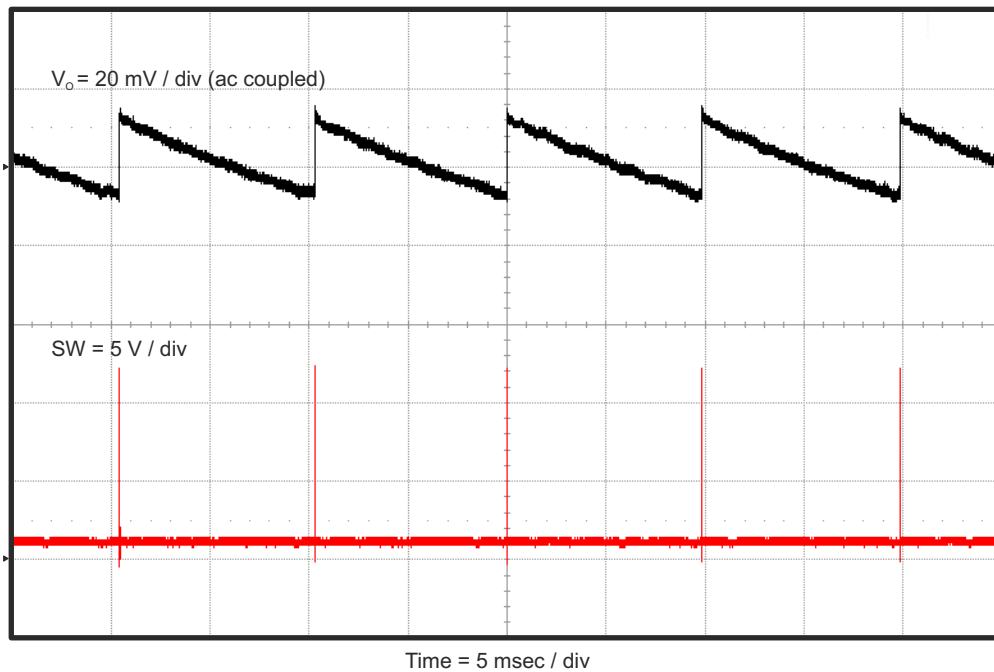


Figure 4-9. TPS563210AEVM-663 Output Voltage Ripple, $I_{OUT} = 0 \text{ mA}$

4.8 Input Voltage Ripple

The TPS563210AEVM-663 input voltage ripple is shown in [Figure 4-10](#). The output current is as indicated.

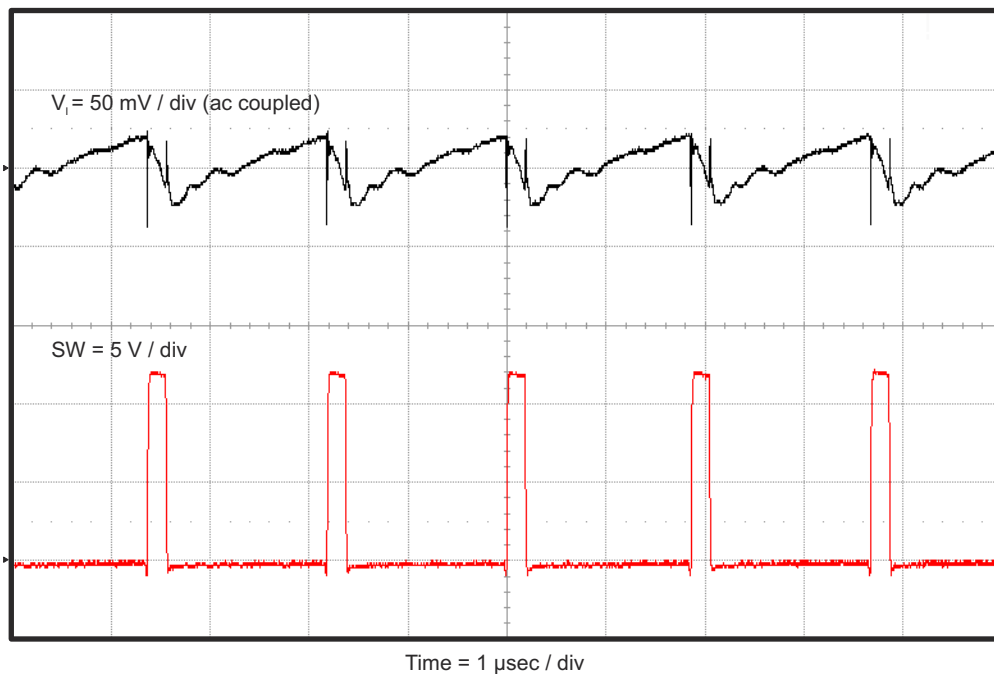


Figure 4-10. TPS563210AEVM-663 Input Voltage Ripple, $I_{OUT} = 3 \text{ A}$

4.9 Start-Up

The TPS563210AEVM-663 start-up waveform relative to V_{IN} is shown in Figure 4-11. Load = 1 Ω resistive.

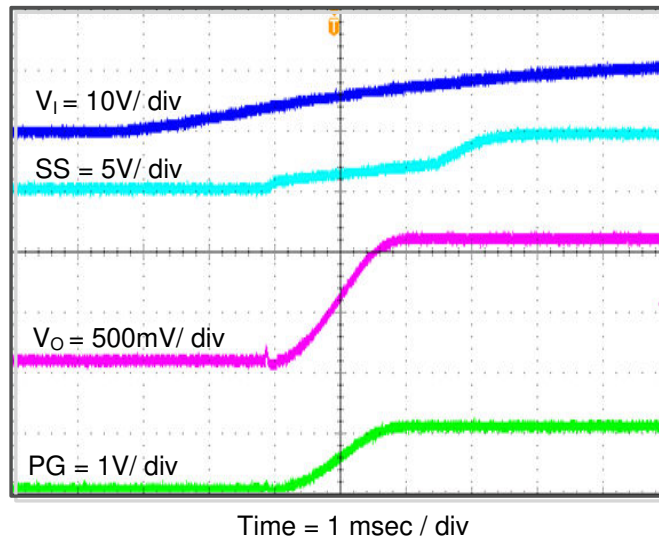


Figure 4-11. TPS563210AEVM-663 Start-Up Relative to V_{IN}

The TPS563210AEVM-663 start-up waveform relative to enable (EN) is shown in Figure 4-12. Load = 1 Ω resistive.

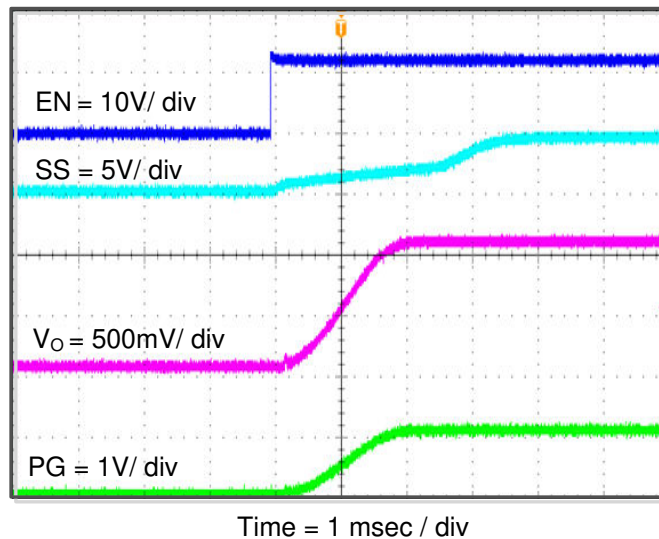


Figure 4-12. TPS563210AEVM-663 Start-Up Relative to EN

4.10 Shut-Down

The TPS563210AEVM-663 shut-down waveform relative to V_{IN} is shown in Figure 4-13. Load = 1 Ω resistive.

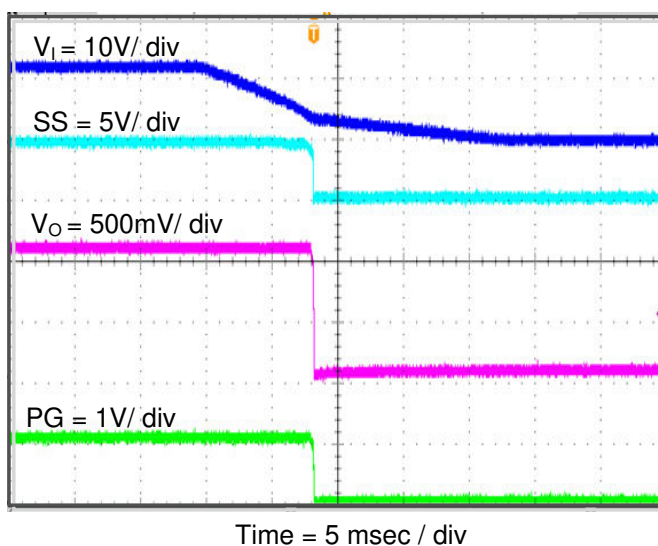


Figure 4-13. TPS563210AEVM-663 Shut-Down Relative to V_{IN}

The TPS563210AEVM-663 shut-down waveform relative to EN is shown in Figure 4-14. Load = 1 Ω resistive.

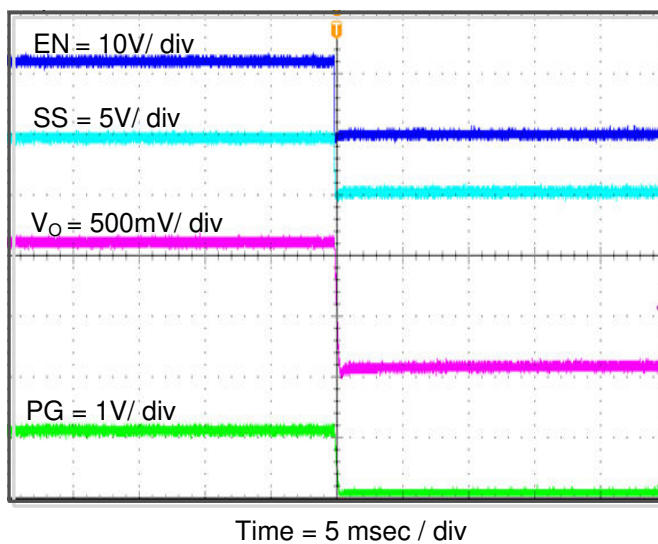


Figure 4-14. TPS563210AEVM-663 Shut-Down Relative to EN

5 Board Layout

This section provides a description of the TPS563210AEVM-663 , board layout, and layer illustrations.

5.1 Layout

The board layout for the TPS563210AEVM-663 is shown in [Figure 5-1](#), [Figure 5-2](#), and [Figure 5-3](#). The top layer contains the main power traces for VIN, VOUT, and ground. Also on the top layer are connections for the pins of the TPS563210A and a large area filled with ground. Most of the signal traces are also located on the top side. The input decoupling capacitors, C1, C2, and C3 are located as close to the IC as possible. The input and output connectors, test points, and all of the components are located on the top side. The bottom layer is a ground plane along with the switching node copper fill, signal ground copper fill and the feed back trace from the point of regulation to the top of the resistor divider network.

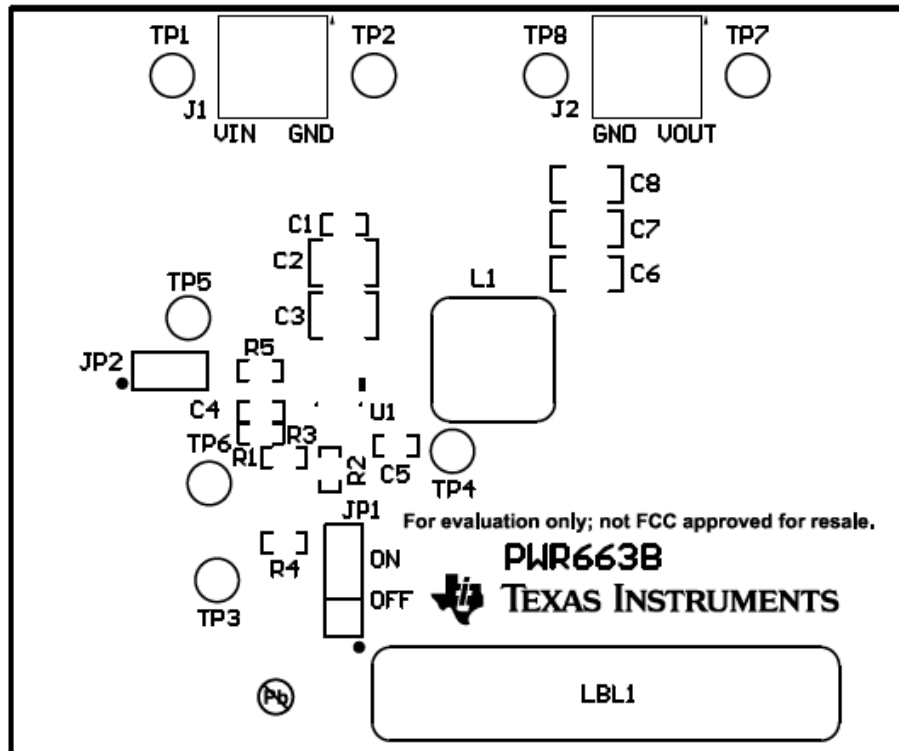


Figure 5-1. Top Assembly

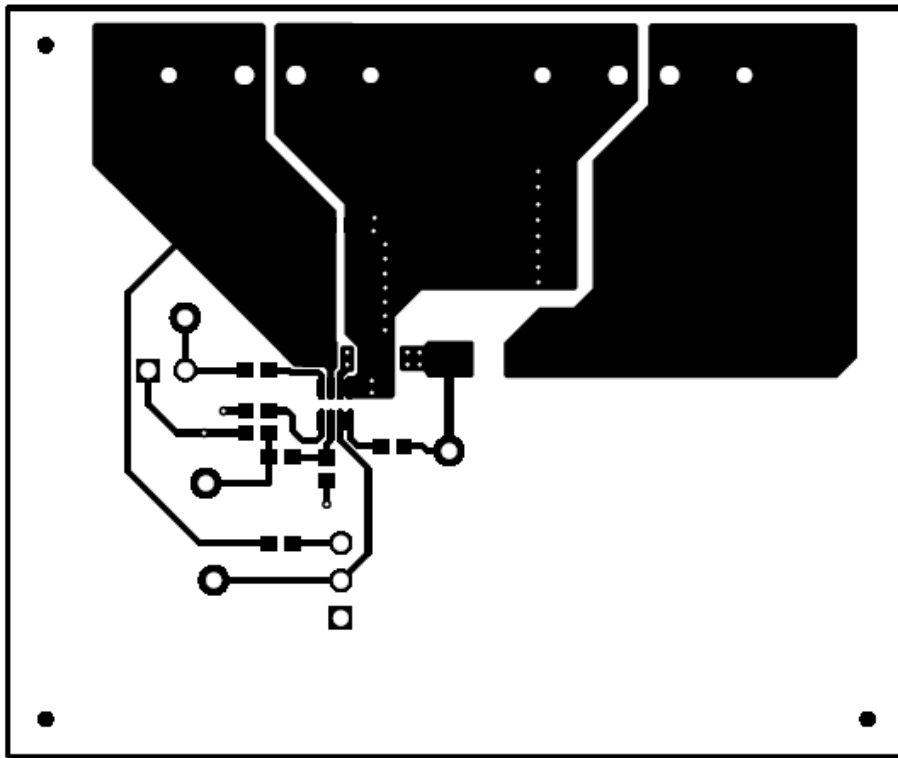


Figure 5-2. Top Layer

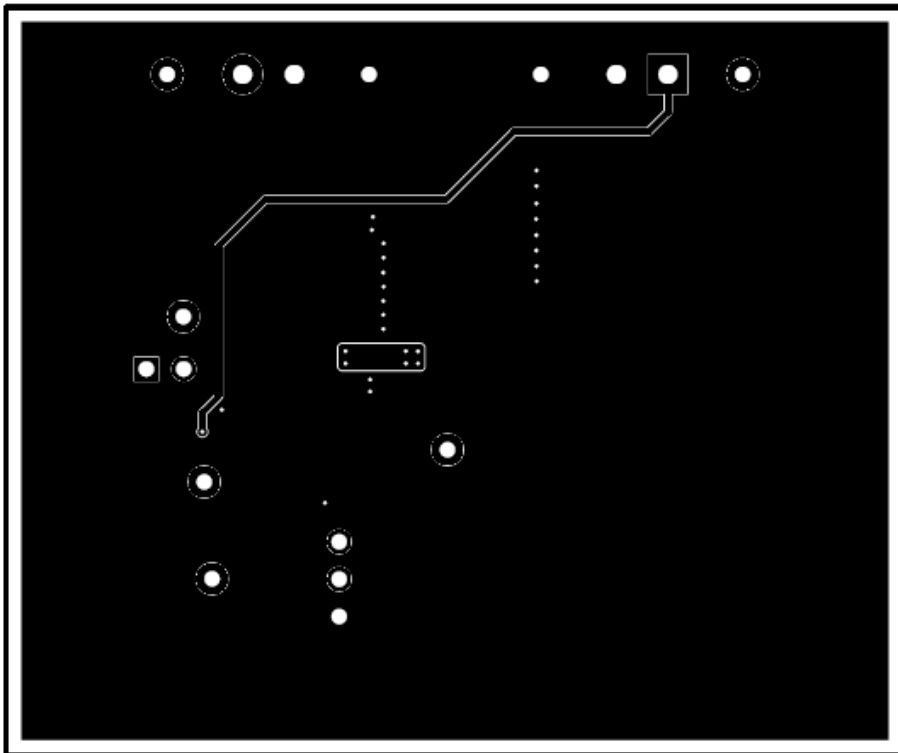
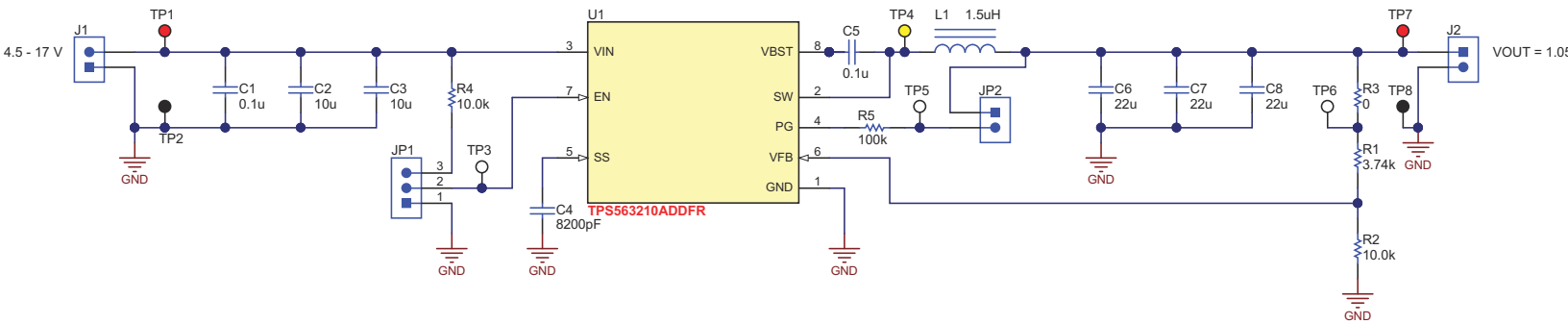


Figure 5-3. Bottom Layer

6 Schematic, Bill of Materials, and Reference

6.1 Schematic

Figure 6-1 is the schematic for the TPS563210AEVM-663 .



Copyright © 2016, Texas Instruments Incorporated

Figure 6-1. TPS563210AEVM-663 Schematic Diagram

6.2 Bill of Materials

Table 6-1 lists the BOM for the EVM.

Table 6-1. Bill of Materials

| Designator | Qty | Value | Description | Package Reference | Part Number | Manufacturer | Alternate Part Number | Alternate Manufacturer |
|---|-----|--------|---|----------------------------|--------------------|-----------------------------|-----------------------|------------------------|
| !PCB1 | 1 | | Printed Circuit Board | | PWR663 | Any | - | - |
| C1, C5 | 2 | 0.1uF | CAP, CERM, 0.1uF, 25V, +/-10%, X5R, 0603 | 0603 | GRM188R61E104KA01D | Murata | | |
| C2, C3 | 2 | 10uF | CAP, CERM, 10uF, 25V, +/-10%, X5R, 1210 | 1210 | GRM32DR61E106KA12L | Murata | | |
| C4 | 1 | 8200pF | CAP, CERM, 8200pF, 25V, +/-10%, X7R, 0603 | 0603 | GRM188R71E822KA01D | Murata | | |
| C6, C7, C8 | 3 | 22uF | CAP, CERM, 22uF, 10V, +/-10%, X7R, 1206 | 1206 | GRM31CR71A226KE15L | Murata | | |
| J1, J2 | 2 | | Terminal Block, 6A, 3.5mm Pitch, 2-Pos, TH | 7.0x8.2x6.5mm | ED555/2DS | On-Shore Technology | | |
| JP1 | 1 | | Header, 100mil, 3x1, Tin, TH | Header, 3 PIN, 100mil, Tin | PEC03SAAN | Sullins Connector Solutions | | |
| JP2 | 1 | | Header, 100mil, 2x1, Tin, TH | Header, 2 PIN, 100mil, Tin | PEC02SAAN | Sullins Connector Solutions | | |
| L1 | 1 | 1.5uH | Inductor, Shielded Drum Core, Superflux, 1.5uH, 11A, 0.0078 ohm, SMD | WE-HC4 | 744311150 | Würth Elektronik eiSos | | |
| LBL1 | 1 | | Thermal Transfer Printable Labels, 1.250" W x 0.250" H - 10,000 per roll | PCB Label 1.25"H x 0.250"W | THT-13-457-10 | Brady | | |
| R1 | 1 | 3.74k | RES, 3.74k ohm, 1%, 0.1W, 0603 | 0603 | CRCW06033K74FKEA | Vishay-Dale | | |
| R2, R4 | 2 | 10.0k | RES, 10.0k ohm, 1%, 0.1W, 0603 | 0603 | CRCW060310K0FKEA | Vishay-Dale | | |
| R3 | 1 | 0 | RES, 0 ohm, 5%, 0.1W, 0603 | 0603 | ERJ-3GEY0R00V | Panasonic | | |
| R5 | 1 | 100k | RES, 100k ohm, 1%, 0.1W, 0603 | 0603 | CRCW0603100KFKEA | Vishay-Dale | | |
| SH-JP1, SH-JP2 | 2 | 1x2 | Shunt, 100mil, Gold plated, Black | Shunt | 969102-0000-DA | 3M | SNT-100-BK-G | Samtec |
| TP1, TP7 | 2 | Red | Test Point, Miniature, Red, TH | Red Miniature Testpoint | 5000 | Keystone | | |
| TP2, TP8 | 2 | Black | Test Point, Miniature, Black, TH | Black Miniature Testpoint | 5001 | Keystone | | |
| TP3, TP5, TP6 | 3 | White | Test Point, Miniature, White, TH | White Miniature Testpoint | 5002 | Keystone | | |
| TP4 | 1 | Yellow | Test Point, Miniature, Yellow, TH | Yellow Miniature Testpoint | 5004 | Keystone | | |
| U1 | 1 | | 4.5-V to 17-V Input, 2-A, 3-A Synchronous Step-Down Voltage Regulator, DDF0008A | DDF0008A | TPS563210ADDFR | Texas Instruments | TPS563210ADDFT | Texas Instruments |
| FID1, FID2, FID3 | 0 | | Fiducial mark. There is nothing to buy or mount. | Fiducial | N/A | N/A | | |
| Notes: Unless otherwise noted in the Alternate PartNumber and/or Alternate Manufacturer columns, all parts may be substituted with equivalents. | | | | | | | | |

6.3 Reference

1. *TPS56x210 4.5 V to 17 V Input, 2-A/3-A Synchronous Step-Down Voltage Regulator in SOT-23* data sheet ([SLVSDP9](#))

7 Revision History

NOTE: Page numbers for previous revisions may differ from page numbers in the current version.

| Changes from Revision * (October 2014) to Revision A (July 2021) | Page |
|--|-------------|
| • Updated the numbering format for tables, figures, and cross-references throughout the document. | 3 |
| • Updated user's guide title..... | 3 |

IMPORTANT NOTICE AND DISCLAIMER

TI PROVIDES TECHNICAL AND RELIABILITY DATA (INCLUDING DATA SHEETS), DESIGN RESOURCES (INCLUDING REFERENCE DESIGNS), APPLICATION OR OTHER DESIGN ADVICE, WEB TOOLS, SAFETY INFORMATION, AND OTHER RESOURCES "AS IS" AND WITH ALL FAULTS, AND DISCLAIMS ALL WARRANTIES, EXPRESS AND IMPLIED, INCLUDING WITHOUT LIMITATION ANY IMPLIED WARRANTIES OF MERCHANTABILITY, FITNESS FOR A PARTICULAR PURPOSE OR NON-INFRINGEMENT OF THIRD PARTY INTELLECTUAL PROPERTY RIGHTS.

These resources are intended for skilled developers designing with TI products. You are solely responsible for (1) selecting the appropriate TI products for your application, (2) designing, validating and testing your application, and (3) ensuring your application meets applicable standards, and any other safety, security, regulatory or other requirements.

These resources are subject to change without notice. TI grants you permission to use these resources only for development of an application that uses the TI products described in the resource. Other reproduction and display of these resources is prohibited. No license is granted to any other TI intellectual property right or to any third party intellectual property right. TI disclaims responsibility for, and you will fully indemnify TI and its representatives against, any claims, damages, costs, losses, and liabilities arising out of your use of these resources.

TI's products are provided subject to [TI's Terms of Sale](#) or other applicable terms available either on ti.com or provided in conjunction with such TI products. TI's provision of these resources does not expand or otherwise alter TI's applicable warranties or warranty disclaimers for TI products.

TI objects to and rejects any additional or different terms you may have proposed.

Mailing Address: Texas Instruments, Post Office Box 655303, Dallas, Texas 75265
Copyright © 2022, Texas Instruments Incorporated