

DRV8899-Q1 EVM GUI User's Guide

This document is provided with the DRV8899-Q1 customer evaluation module (EVM) as a supplement to the [DRV8899-Q1 Automotive Stepper Motor Driver datasheet](#). This document only describes the installation and usage of the DRV8899-Q1 EVM GUI. For additional details on hardware connections refer to the [DRV8899-Q1 EVM User's Guide](#).

Contents

1	Overview	2
2	Hardware and Software Setup	2
3	GUI Application	2
3.1	Installation	2
3.2	Getting Started with DRV8899-Q1EVM GUI	2
3.3	Use the DRV8899-Q1EVM GUI	2

List of Figures

1	DRV8899-Q1 EVM GUI (Home Page)	3
2	Figure 2. DRV8899-Q1 EVM GUI (Device Connection pane)	3
3	Serial port configuration.....	4
4	DRV8899-Q1 EVM GUI (Stepper Motor Control page).....	4
5	Controls available for Speed Mode.....	5
6	Controls for Step Mode	6
7	Stop conditions.....	7
8	DRV8899-Q1 EVM GUI (Decay mode)	8
9	DRV8899-Q1 EVM GUI (Registers Page).....	9
10	DRV8899-Q1 EVM GUI (Menu bar – Help Option)	10

Trademarks

MSP430 is a trademark of Texas Instruments.
 Windows is a registered trademark of Microsoft Corporation.
 All other trademarks are the property of their respective owners.

1 Overview

The DRV8899-Q1 customer EVM is a platform to support prototyping and evaluation for the DRV8899-Q1, a medium-voltage dual H-bridge driver for stepper-driving applications. The DRV8899-Q1 drives a single bipolar stepper with microstep settings ranging from full-stepping to 1/256 resolution with internally-regulated microstep levels. It provides a variety of programmable decay settings.

The EVM uses an MSP430™ microcontroller and a USB interface chip to manage communication from the GUI software application installed on a PC computer with Windows®. The GUI sends serial commands to the MSP430 to control the device signals, monitor faults, read and write SPI registers, and drive a stepper motor by issuing the step commands at the desired rate. This document describes the software and tools used to evaluate DRV8899-Q1 device for stepper motor driving on the DRV8899-Q1 EVM.

2 Hardware and Software Setup

The hardware (HW) and software (SW) tools that follow are required for the evaluation of DRV8899-Q1:

- DRV8899-Q1 EVM
- Stepper motor
- Voltage supply from 4.5 V to 45 V

This document only describes the installation and usage of the DRV8899-Q1 EVM GUI. For additional details on hardware connections refer to the [DRV8899-Q1 EVM User's Guide](#).

3 GUI Application

3.1 Installation

Installation (For Desktop Version Only)

- Download the installable DRV8899-Q1_x.y.z_installer_win.zip file (x.y.z is the GUI revision number).
- Extract the zip file.
- Double click on the installer to install the GUI Application. During the first installation, the installer prompts for installation of Cloud Agent. Install it.

3.2 Getting Started with DRV8899-Q1EVM GUI

The DRV8899-Q1 EVM GUI and DRV8899-Q1 EVM allows the user to configure various settings required for stepper motor driving. The DRV8899-Q1 EVM GUI lets the user adjust the motor speed, control the direction, control the step movement, configure various device settings, and monitor the device status.

Perform the following steps to begin using the GUI:

- Connect the stepper motor to the EVM.
- Plug in the micro-USB cable to the PC.
- Enable the motor power supply. For additional details on hardware connections refer to the [DRV8899-Q1 EVM User's Guide](#).

Click on DRV8899-Q1 EVM GUI shortcut either on the desktop or from the Start menu to run the GUI application.

3.3 Use the DRV8899-Q1EVM GUI

- The application opens with launch page shown in [Figure 1](#).

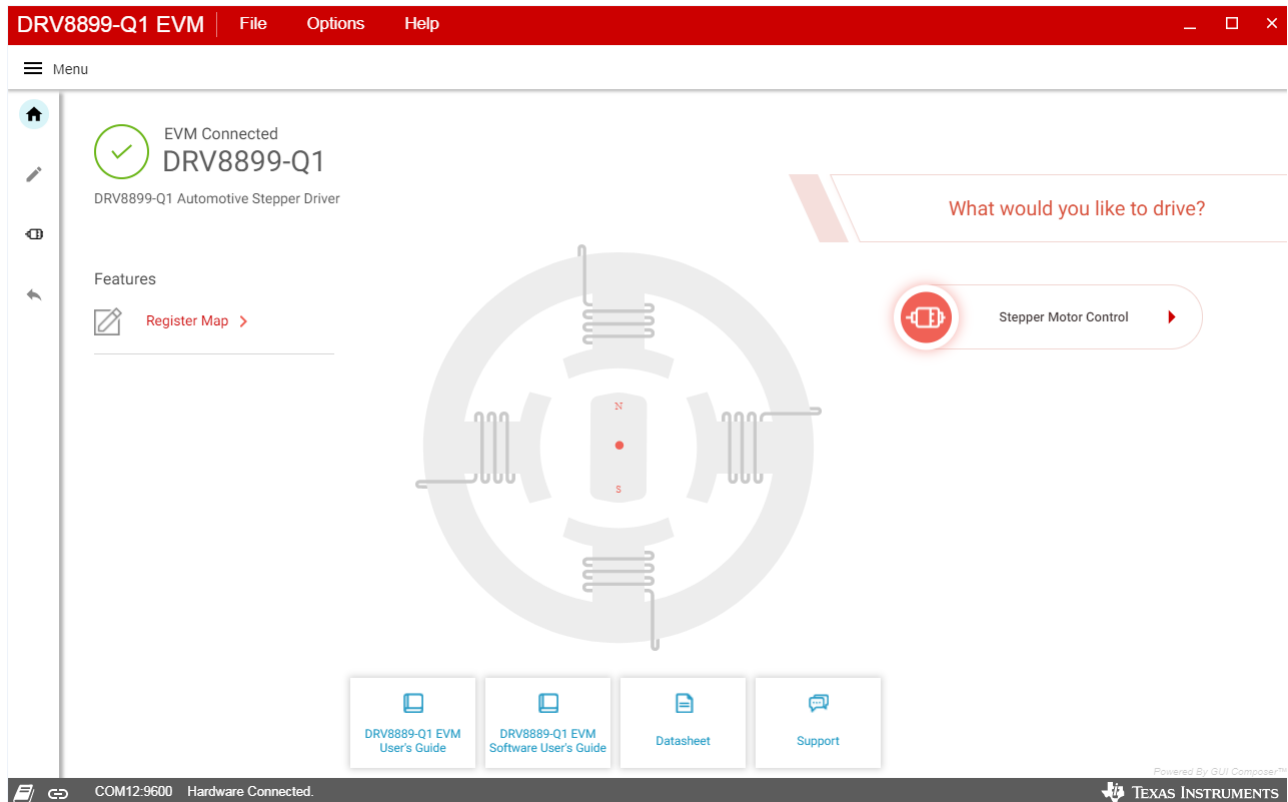


Figure 1. DRV8899-Q1 EVM GUI (Home Page)

- The application will try to establish communication with the device connected. A message showing 'Connected to Cloud Agent. Connecting to target...' will be displayed in the hardware connection status pane at the bottom of the screen. If the connection is successful, a 'COMxx:9600 Connected to Target' message appears as shown in [Figure 2](#) below.



Figure 2. Figure 2. DRV8899-Q1 EVM GUI (Device Connection pane)

- If the GUI fails to connect to the EVM, the hardware connection status pane will show the message 'Hardware Not Connected.'
- If the GUI is opened without connecting the EVM, the hardware connection status pane will show 'Error: no serial ports found.'
- If there are more than one DRV8899-Q1 EVM boards connected, the first matching device will be connected automatically. In order to switch to another EVM,
 - Click Options -> Serial Port. A serial port configuration popup is displayed as shown below in [Figure 3](#).
 - Choose the appropriate port and baud rate.
 - Click OK.

Serial Port Configuration

Ports:

Baud Rates:

OK CANCEL

Figure 3. Serial port configuration

- Once the correct device is connected, the home page will show a message ‘Device Connected’ with a green checkmark as shown in [Figure 1](#).
- Click on the ‘Stepper Motor’ button to open the stepper control page.

3.3.1 Stepper Control Page

The Stepper Control page (shown in [Figure 4](#)) includes various controls to sleep/wake the driver, control the stepper motor, and configure various parameters such as slew rate, torque, full scale current, and so forth. Hovering over the (?) icon to the right of a control displays a brief description about the control.

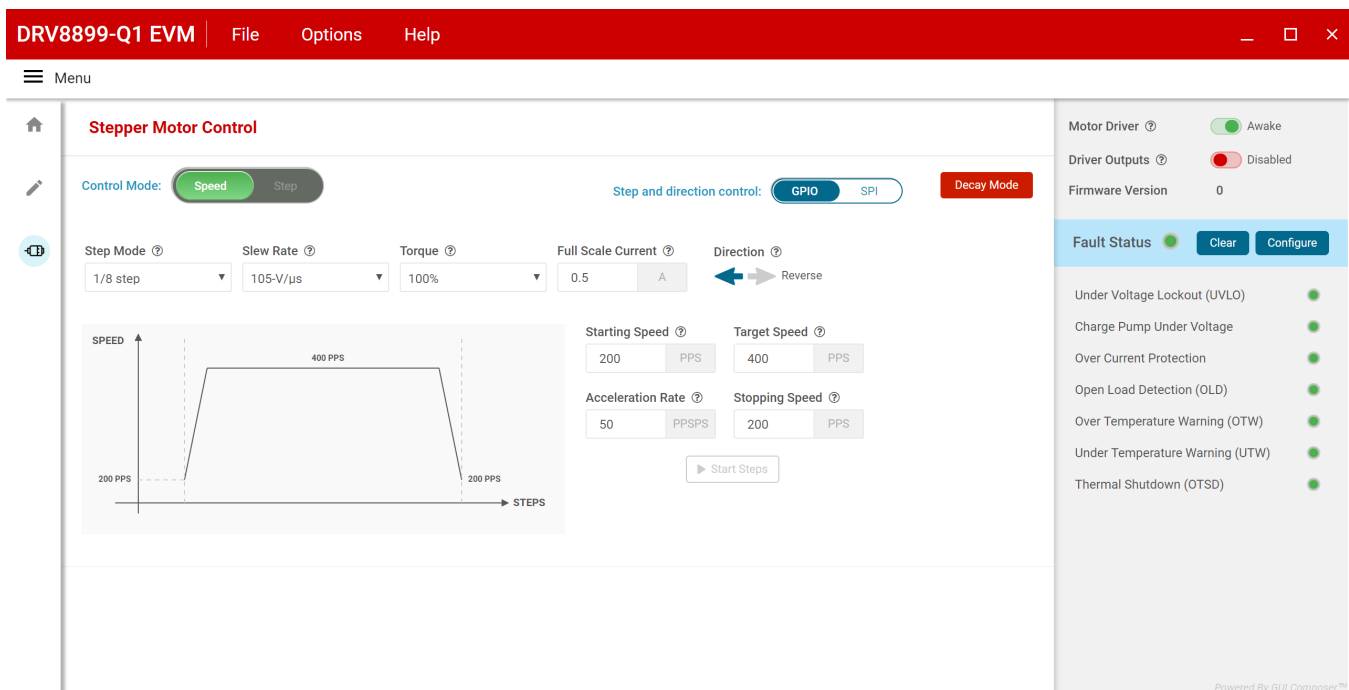


Figure 4. DRV8899-Q1 EVM GUI (Stepper Motor Control page)

3.3.1.1 Stepper Control Modes

The GUI allows the user to control the stepper motion profile in two modes – Speed Mode and Step Mode. To toggle between the modes, use the toggle button at the top of the screen.

3.3.1.1.1 Speed Mode

Speed Mode allows the user to spin the stepper motor continuously at a desired speed. The user configures the starting speed, stopping speed, acceleration rate, and target speed. Stepper controls are enabled only when 'Motor Driver' control is enabled for example, DRVOFF pin is set to low. The 'Start Steps' button is enabled only when 'Driver Outputs' control is enabled for example, DRVOFF pin is set to low. When the 'Start Steps' button is clicked, the motor begins spinning at the starting speed and accelerates to the target speed according to the configured acceleration rate. The acceleration profile in the microcontroller firmware accepts the starting-speed and target-speed PPS values and calculates the appropriate PWM clock period to create the stepping signal on the STEP pin. When the 'Start steps' button is clicked, the PWM timer generates steps at a rate specified by the 'Starting Speed' PPS parameter. When 'Stop Steps' is clicked, the motor starts decelerating at the 'Acceleration Rate' configured to reach the stopping speed and eventually stop. The configuration is visualized by the embedded graph shown on the GUI screen (Figure 5).

When accelerating or decelerating, the PPS signal is adjusted every 32 ms based on the integer value of PPSPS / 32 ms. Acceleration rates must be between 1 and 65,535 PPSPS. The step rate increases by the calculated value until the target speed is reached.

The starting speed must be less than or equal to the target speed. If the starting speed and target speed are equal, the EVM firmware will not perform an acceleration routine. The stopping speed must also be less than or equal to the target speed. The target speed is limited to a range between 1 and 65,535 PPS.

The 'Start Steps' command computes how frequently automatic speed updates are issued and a second timer is used to change the speed according to the programmed acceleration rate profile. Once clicked, the motor will begin spinning according to the parameters set in the GUI.

When the target speed PPS value is reached, the acceleration profile ends, and the motor continues running at the target speed until the 'Stop Steps' button is clicked. When the stepper is commanded to stop, the controller performs the same actions as it did while accelerating, but in reverse order, to decelerate until the stopping speed PPS value is reached. At this point, the motor fully stops.

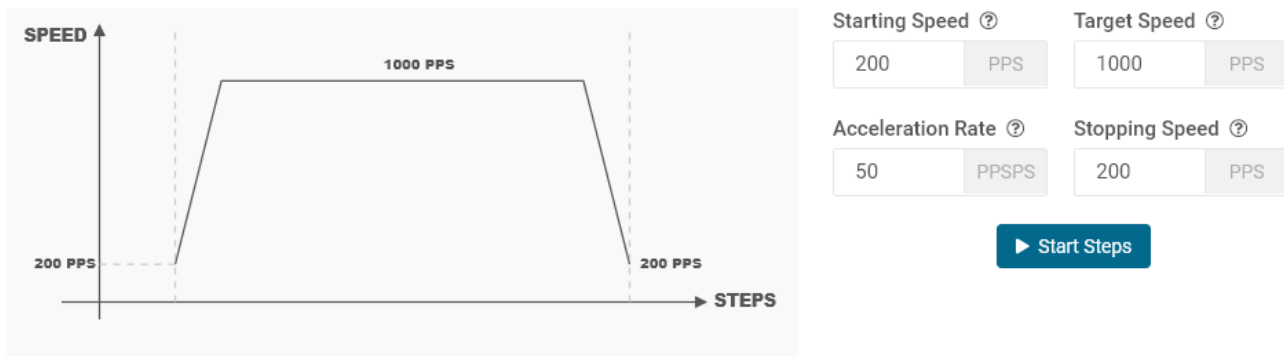


Figure 5. Controls available for Speed Mode

3.3.1.1.2 Step Mode

Step Mode allows the user to move the stepper motor a configured number of steps. Stepper controls are enabled only when the 'Motor Driver' control is enabled for example, DRV0FF pin is set to low. When the 'Start Steps' button is clicked, the motor starts spinning at the starting speed and accelerates at the rate configured. When the number of steps is reached, the motor stops.

The acceleration and deceleration profiles work similarly as before, except when the deceleration routine starts and when the motor stops are a function of the 'Steps to Stop' and deceleration rate parameters. The configuration can be visualized in the graph embedded in the GUI. If the "Reciprocate" button is enabled, the stepper will travel the set number of steps, then reverse direction. It will do this continuously until 'Stop Steps' is clicked. [Figure 6](#) shows the controls available in Step Mode

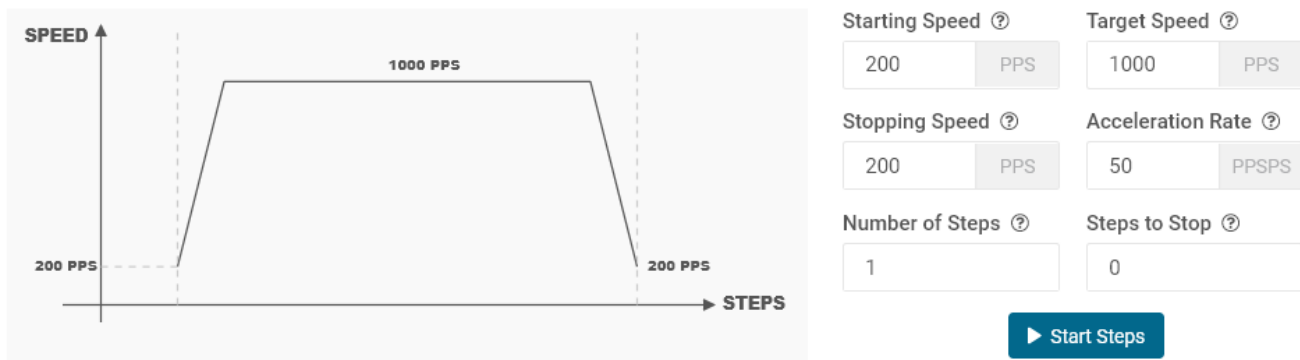


Figure 6. Controls for Step Mode

The parameters from 'Speed Mode' are reused as well, and they operate the same as described in [Section 3.3.1.1.1](#). Two new parameters have been added to properly control the limited number of steps actuation. These parameters are described as follows:

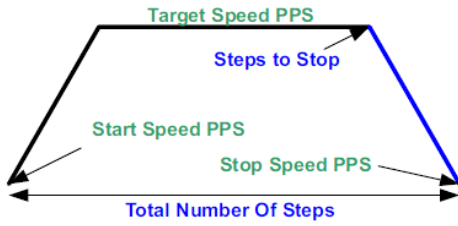
Number of Steps — This parameter is the number of steps that the controller will issue.

Steps to Stop — The controller is continuously monitoring the step being issued and when the current step is equal to the 'Steps to Stop' parameter, a deceleration profile is issued. If the value of the 'Steps to Stop' parameter is larger than the number of steps, then the motor stops abruptly and without undergoing a deceleration profile.

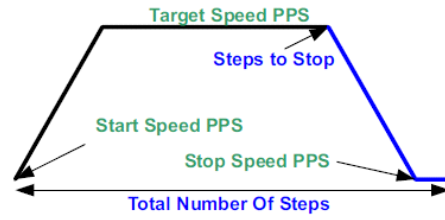
When a deceleration profile is issued, the controller decreases the speed until reaching the 'Stopping Speed' value. If the 'Number of Steps' parameter is met before the deceleration profile is complete, then the motor stops at the current speed. If the stopping speed is met before all the number of steps is issued, then the motor rotates at the stopping speed value until all the steps are executed.

Ideally, the system should resemble the case in which the controller executes all the commanded steps at a speed as close as possible to the stop speed. In the event this is not possible because of the particular parameters that were selected, stopping the motor at a speed very close to the 'Stopping Speed' parameter is often good enough to ensure good motion quality and application performance.

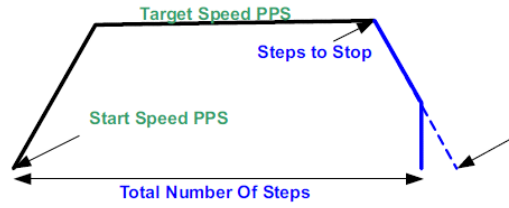
[Figure 7](#) shows the three conditions possible when stopping and the action taken.



1. Motor reaches stop speed at the stop speed.



2. Motor reaches stop speed before the stop speed is reached.



3. Motor runs out of steps before reaching stop speed.

Figure 7. Stop conditions

3.3.2 Decay Mode

Decay refers to how the driving currents recirculate in H-bridge FETs during the off time. Using the GUI, the user configure the decay mode. To configure,

- Click the Decay Mode button at the top center-right of the screen. A popup appears as shown below in [Figure 8](#).

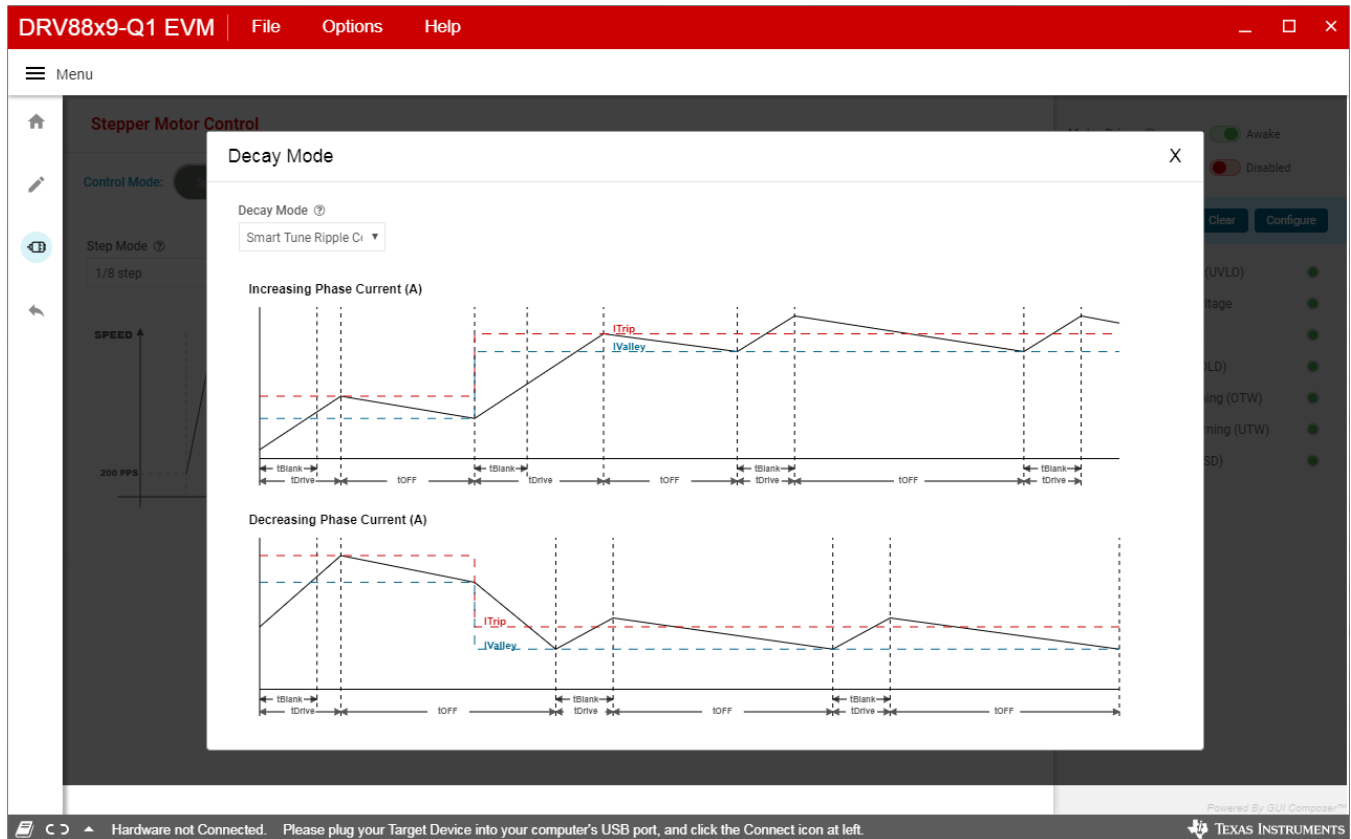


Figure 8. DRV8899-Q1 EVM GUI (Decay mode)

- Decay mode and appropriate TOFF values can be configured in the popup. The configurations can be visualized in the graph shown. For information about the different decay modes, refer to the [DRV8899-Q1 Automotive Stepper Motor Driver datasheet](#).

3.3.3 Fault Monitoring

The fault monitor section at the right side of the screen allows the user to configure monitor the various device faults. The LED staying green indicates 'No Fault'. When the LED turns red, it indicates that a fault has occurred. The user can also configure Fault reporting options by clicking the 'Configure' button.

3.3.4 Register Map

- Enabling the Motor Driver enables the Register page.
- The page can be opened by clicking 'Pencil' icon from the side-bar menu
- This page displays all the registers and their fields present on the DRV8899-Q1 device.
- The page allows reading and writing any register, field, or bit.
- To read a particular register, click on the register and click 'Read Register' button.
- To read all the registers, click 'Read All Registers' button
- To update the register values:
 - Edit the 'Value' field directly to update a register's hex value.

- Change the field value from the field view at the right of the screen.
- Double click on any of the register bit to flip the bit (from 0 to 1 or vice versa).
- By default, the write mode is Immediate which writes values to the registers immediately upon change.
- Write mode can be changed to 'Deferred' which will write queue all changes and update the device registers only when 'Write Register' or 'Write All Registers' is clicked.
- Click on the question mark icon on any register or field to get in-place data sheet help.

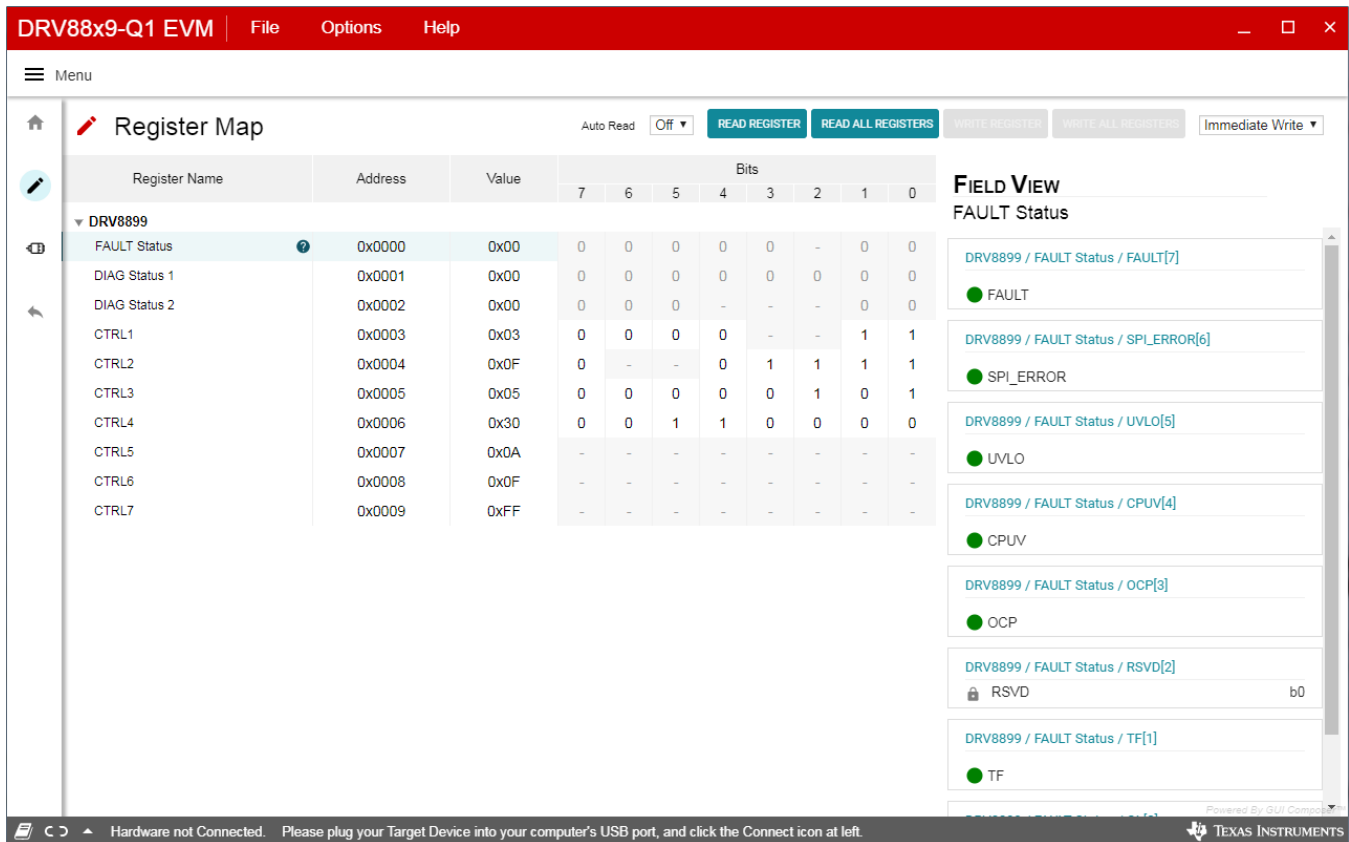


Figure 9. DRV8899-Q1 EVM GUI (Registers Page)

3.3.5 Using Register Map

1. Configure desired motion profile in the GUI in Speed Mode. The default values will be acceptable for immediate evaluation.
2. Configure device and motion profile settings as desired. The default values should be acceptable for immediate evaluation. If motor torque is too high while evaluating, change the 'Full-Scale Current' setting or 'Torque' setting to reduce it.
3. Click 'Start Steps' to begin spinning the motor.
4. Go to the Register Map page, and click 'CLR_FLT' in CTRL4 to clear any existing faults. Click 'READ ALL REGISTERS' to refresh the register map.

3.3.6 Use the Side-Bar Menu

Use the side-bar menu in the left pane to navigate to the different pages at any time. Click on the hamburger button in the top-left corner of the GUI to expand the side-bar menu. The following pages that are displayed in the side-bar menu:

- Home
- Registers

- Stepper Motor Control

3.3.7 Menu bar Options

The following menus are available in the menu bar displayed at the top of the GUI as shown in [Figure 10](#).

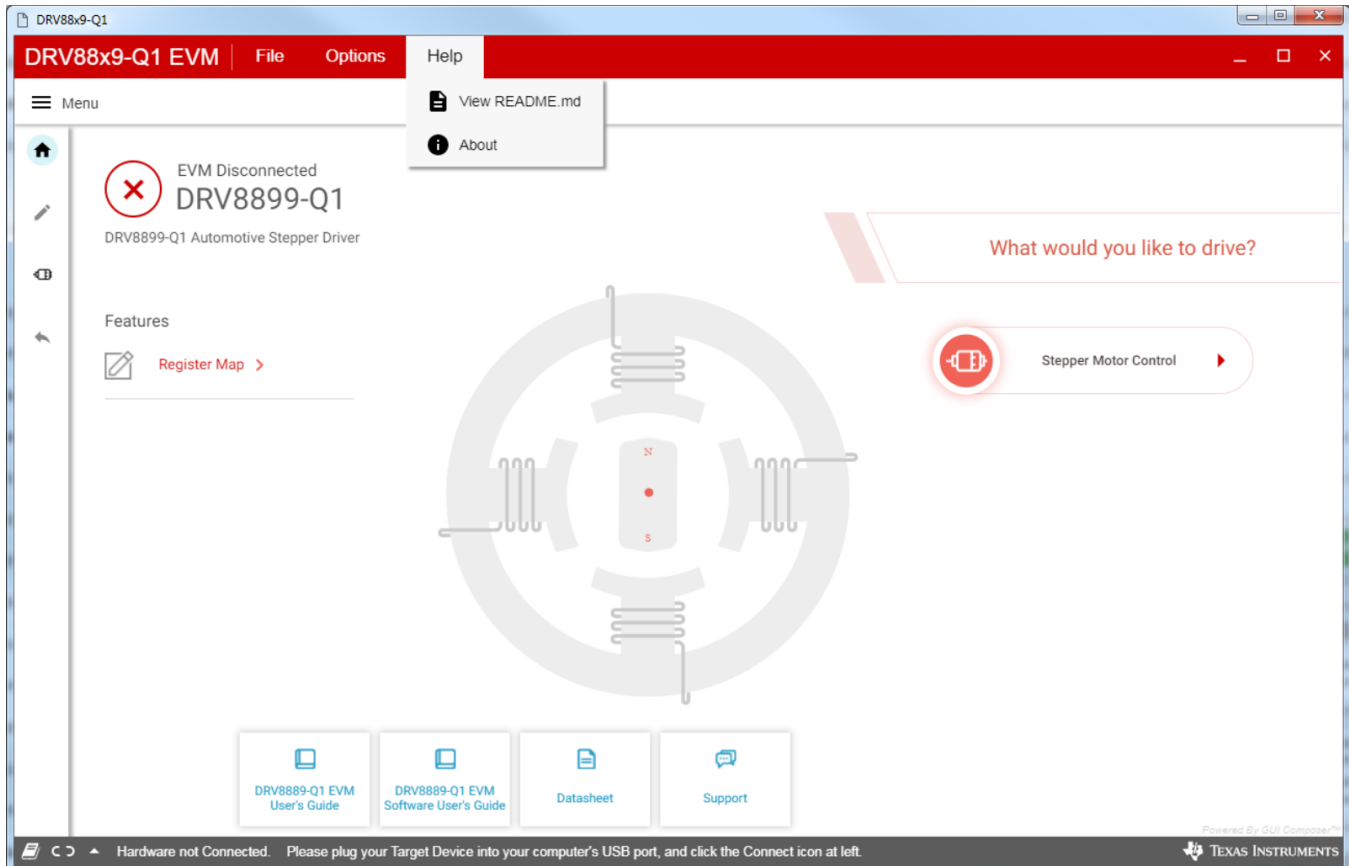


Figure 10. DRV8899-Q1 EVM GUI (Menu bar – Help Option)

3.3.7.1 File Menu

The File Menu has the following options:

- **Program Device** - The user can load the firmware (.out) file onto the device by clicking this option. For the firmware load to work, MSP430 FET needs to be plugged into the J2 connector on the EVM board.
- **Load/Save Registers** – The user can save (and load) a particular configuration of the registers. This saves time when the user need to reconfigure the registers after power cycle.

3.3.7.2 Options Menu

This menu provides the option to configure the serial port communication settings.

3.3.7.3 Help Menu

The Help Menu contains options to view Readme File and About Section. The about section displays the installed software information including the application version.

IMPORTANT NOTICE AND DISCLAIMER

TI PROVIDES TECHNICAL AND RELIABILITY DATA (INCLUDING DATA SHEETS), DESIGN RESOURCES (INCLUDING REFERENCE DESIGNS), APPLICATION OR OTHER DESIGN ADVICE, WEB TOOLS, SAFETY INFORMATION, AND OTHER RESOURCES "AS IS" AND WITH ALL FAULTS, AND DISCLAIMS ALL WARRANTIES, EXPRESS AND IMPLIED, INCLUDING WITHOUT LIMITATION ANY IMPLIED WARRANTIES OF MERCHANTABILITY, FITNESS FOR A PARTICULAR PURPOSE OR NON-INFRINGEMENT OF THIRD PARTY INTELLECTUAL PROPERTY RIGHTS.

These resources are intended for skilled developers designing with TI products. You are solely responsible for (1) selecting the appropriate TI products for your application, (2) designing, validating and testing your application, and (3) ensuring your application meets applicable standards, and any other safety, security, regulatory or other requirements.

These resources are subject to change without notice. TI grants you permission to use these resources only for development of an application that uses the TI products described in the resource. Other reproduction and display of these resources is prohibited. No license is granted to any other TI intellectual property right or to any third party intellectual property right. TI disclaims responsibility for, and you will fully indemnify TI and its representatives against, any claims, damages, costs, losses, and liabilities arising out of your use of these resources.

TI's products are provided subject to [TI's Terms of Sale](#) or other applicable terms available either on ti.com or provided in conjunction with such TI products. TI's provision of these resources does not expand or otherwise alter TI's applicable warranties or warranty disclaimers for TI products.

TI objects to and rejects any additional or different terms you may have proposed.

Mailing Address: Texas Instruments, Post Office Box 655303, Dallas, Texas 75265
Copyright © 2022, Texas Instruments Incorporated