

*EVM User's Guide: DRV81008-Q1EVM, DRV81602-Q1EVM,  
DRV81242-Q1EVM, DRV81080-Q1EVM, DRV81004-Q1EVM,  
DRV81620-Q1EVM*

## **DRV81xxx-Q1 Evaluation Module**



### **Description**

The DRV81xxx-Q1 evaluation module allows for easy evaluation of the DRV81xxx-Q1 family of devices. The EVM has been programmed and configured to work out of the box and begin driving loads right away. DRV81xxx-Q1 family of devices have multiple devices low-side and high-side switch with integrated protection and diagnostics.

### **Get Started**

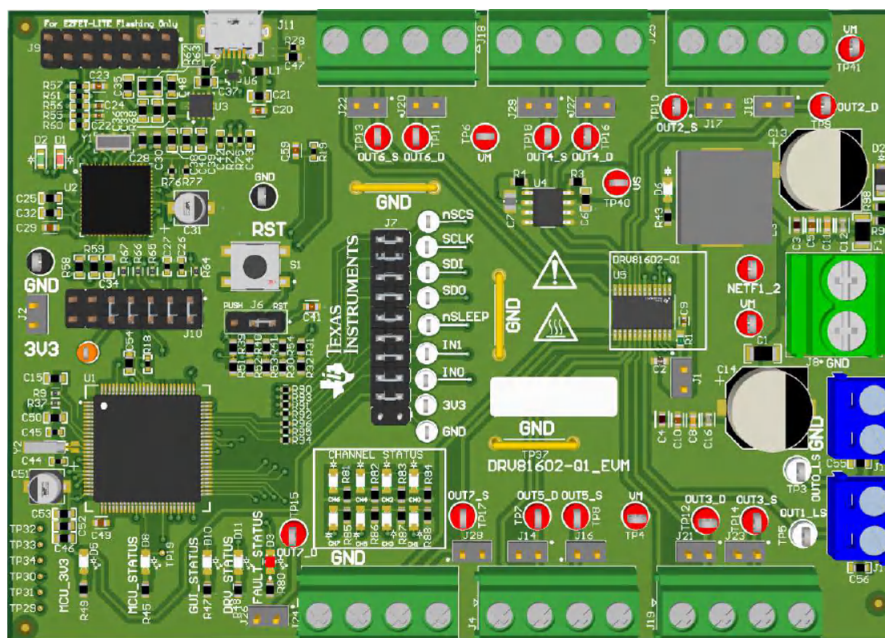
1. Order the EVM from the tools page on ti.com.
2. Use the web based GUI: <https://dev.ti.com/gallery/view/MotorDriversBSM/DRV81xxx/ver/0.2.1/>
3. Connect the EVM with USB cable provided and external power supply.
4. Launch the GUI and select the appropriate device variant on the home page.

### **Features**

- Main signal header with removable shunts to disconnect main signals going to DRV81xxx-Q1 device from MCU
- GUI software to control the EVM and DRV

### **Applications**

- [Automotive body control module](#)
- [HVAC control](#)
- [Automotive lighting](#)
- [HEV-EV battery management system](#)



**DRV81602-Q1 EVM**

# 1 Evaluation Module Overview

## 1.1 Introduction

The DRV81xxx-Q1 devices has low-side and high-side drivers with integrated protection and diagnostics to control relays, LEDs, lamps and motors in automotive and industrial applications. This document is designed to be used as a start-up guide and to supplement the DRV81xxx-Q1 evaluation modules. This user's guide covers EVM hardware setup instructions, GUI installation and usgae instructions.

## 1.2 Kit Contents

The contents of the EVM kit is mentioned in [Table 1-1](#).

**Table 1-1. Kit Contents**

| Item                               | Quantity |
|------------------------------------|----------|
| DRV81xxx-Q1                        | 1        |
| 3ft White USB-A to Micro-USB Cable | 1        |

## 1.3 Specification

The DRV81xxx-Q1 EVM connects to a local computer USB port through a USB-A to Micro-USB cable. A 3.3V LDO generates a 3.3V rail on the EVM from the USB 5V supply which powers the microcontroller. The J8 terminal can be used to provide the supply voltage (VM) of the device. Another 3.3V LDO powered from Vm generates the VDD required by the device in the EVM. Certain EVMs require jumper configurations to connect the device to the corresponding power rail. Be sure to verify jumper configurations before operation.

## 1.4 Device Information

DRV81xxx-Q1 family of devices has low-side and high-side drivers. The table shows the number of low-side, high-side and configurable channels in the DRV81xxx-Q1 family of devices.

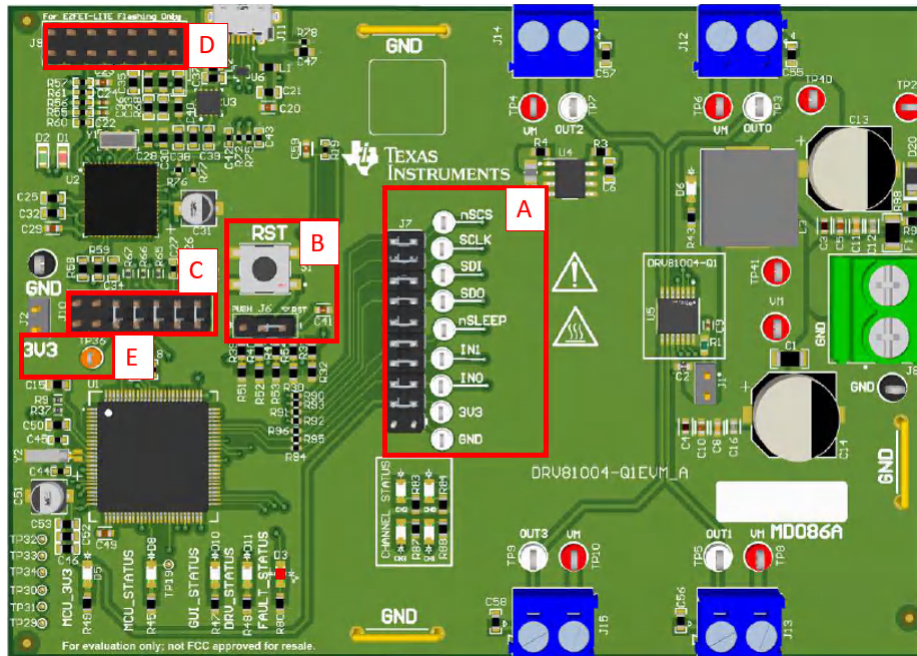
**Table 1-2. DRV81xxx-Q1 Device Configuration**

| Device      | Number of Low Side Channels | Number of High Side Channels | Number of Configurable Channels |
|-------------|-----------------------------|------------------------------|---------------------------------|
| DRV81004-Q1 | 4                           | 0                            | 0                               |
| DRV81008-Q1 | 8                           | 0                            | 0                               |
| DRV81602-Q1 | 2                           | 0                            | 6                               |
| DRV81242-Q1 | 2                           | 4                            | 2                               |
| DRV81620-Q1 | 0                           | 2                            | 6                               |
| DRV81080-Q1 | 0                           | 8                            | 0                               |

## 2 Hardware

### 2.1 Header Information

This section describes the headers and test points for each variant of the DRV81xxx-Q1 family of devices.



**Figure 2-1. DRV81004-Q1EVM Headers and Test Point Information**

| Component Label | Description  |
|-----------------|--|
| A               | <p>Main signal header:</p> <ul style="list-style-type: none"> <li>nSCS: Serial chip select.</li> <li>SCLK: Serial clock input.</li> <li>SDI: Serial data in.</li> <li>SDO: Serial data out.</li> <li>nSLEEP: Sleep mode input.</li> <li>IN1: Control input IN1.</li> <li>IN0: Control input IN0.</li> <li>3V3: 3.3V from LDO.</li> <li>GND: GND test point.</li> </ul> |
| B               | <p>Reset/PUSH button can have two functions based on the location of the SHUNT in J6 (below RST button):</p> <ul style="list-style-type: none"> <li>RST (SHUNT in position 1): pressing the button resets the MCU.</li> <li>PUSH (SHUNT in position 3): pressing the button does a user defined action. Currently not implemented in firmware.</li> </ul>              |
| C               | JTAG connector between MSP430F5338 and MSP430F5528.  |
| D               | Connector for programming MSP430F5528 used in the eZ-FET lite debugger circuit. Only used one time by PCB manufacturer to programmed eZ-FET lite debugger MCU.   |
| E               | 3V3 LDO connector.   |

#### Note

All of the DRV81xxx-Q1EVMs have the same layout structure for A, B, C, D, and E as seen above.



The DRV81008-Q1 has eight low-side switch outputs. Loads must be connected across blue output terminals OUT0-OUT7 accordingly.

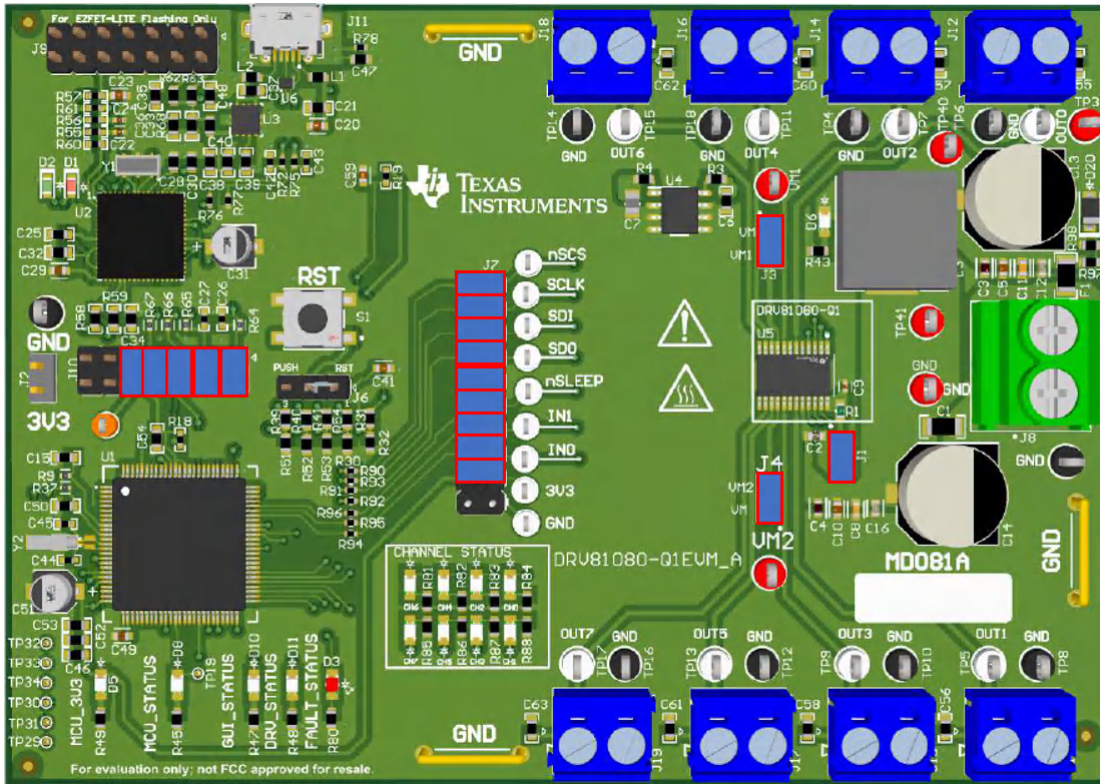


Figure 2-4. DRV81080-Q1 Jumper Configuration

The DRV81080-Q1 has eight high-side switch outputs. Loads must be connected across blue output terminals OUT0-OUT7 accordingly.

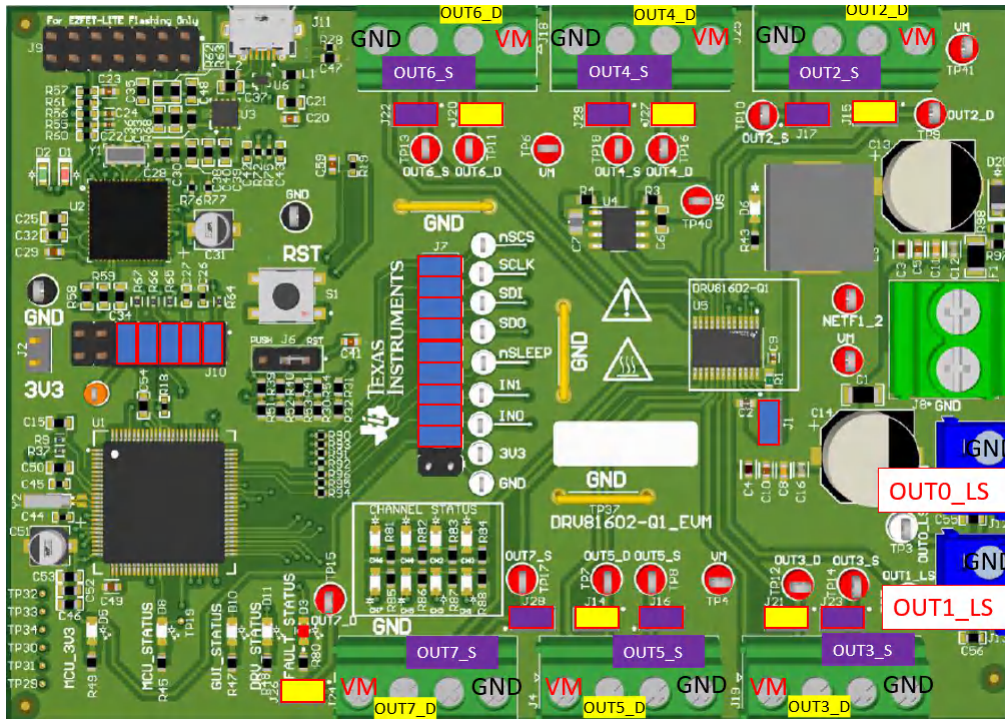
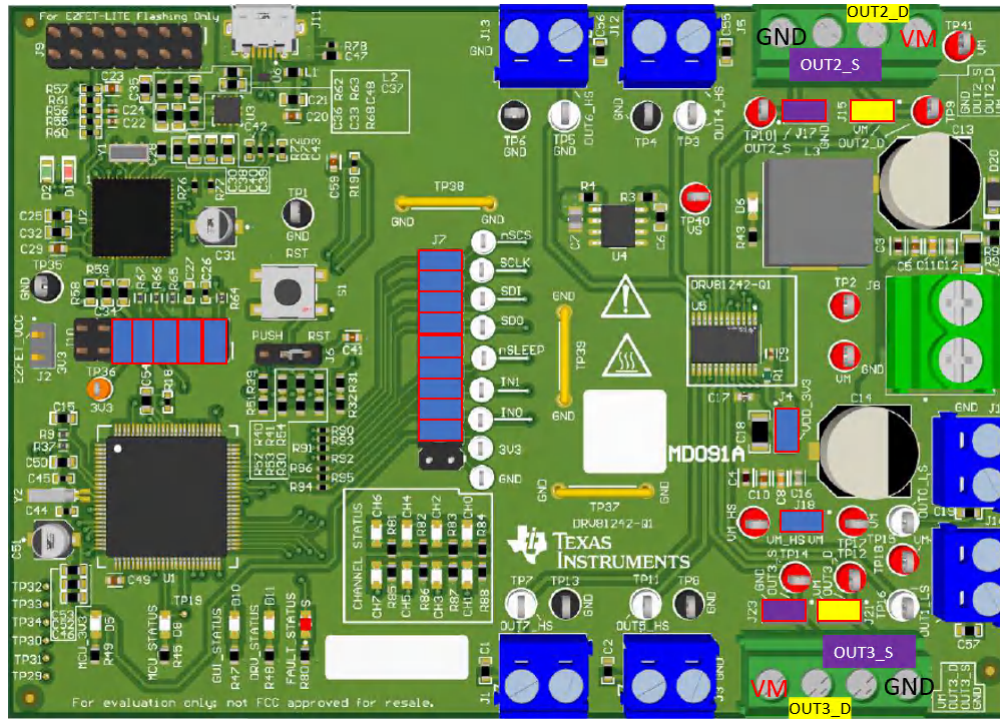


Figure 2-5. DRV81602-Q1 Jumper Configuration

The DRV81602-Q1 has six configurable outputs that can be used as a high-side switch or a low-side switch. If an output is being used as a high-side switch then the *yellow* jumpers need to be populated and the load connected from OUTx\_S to GND. If driving low-side loads, then the purple jumpers need to be populated and the corresponding load connected from OUTx\_S to VM. If an output is being used as a low-side switch then the *purple* jumpers need to be populated and the load connected from OUTx\_D to VM.



**Figure 2-6. DRV81242-Q1 Jumper Configuration**

The DRV81242-Q1 has two configurable outputs that can be used as a high-side switch or a low-side switch. If an output is being used as a high-side switch then the *yellow* jumpers need to be populated and the load connected from OUTx\_S to GND. If driving low-side loads the purple jumpers need to be populated and the corresponding load connected from OUTx\_S to VM. If an output is being used as a low-side switch then the *purple* jumpers need to be populated and the load connected from OUTx\_D to VM.

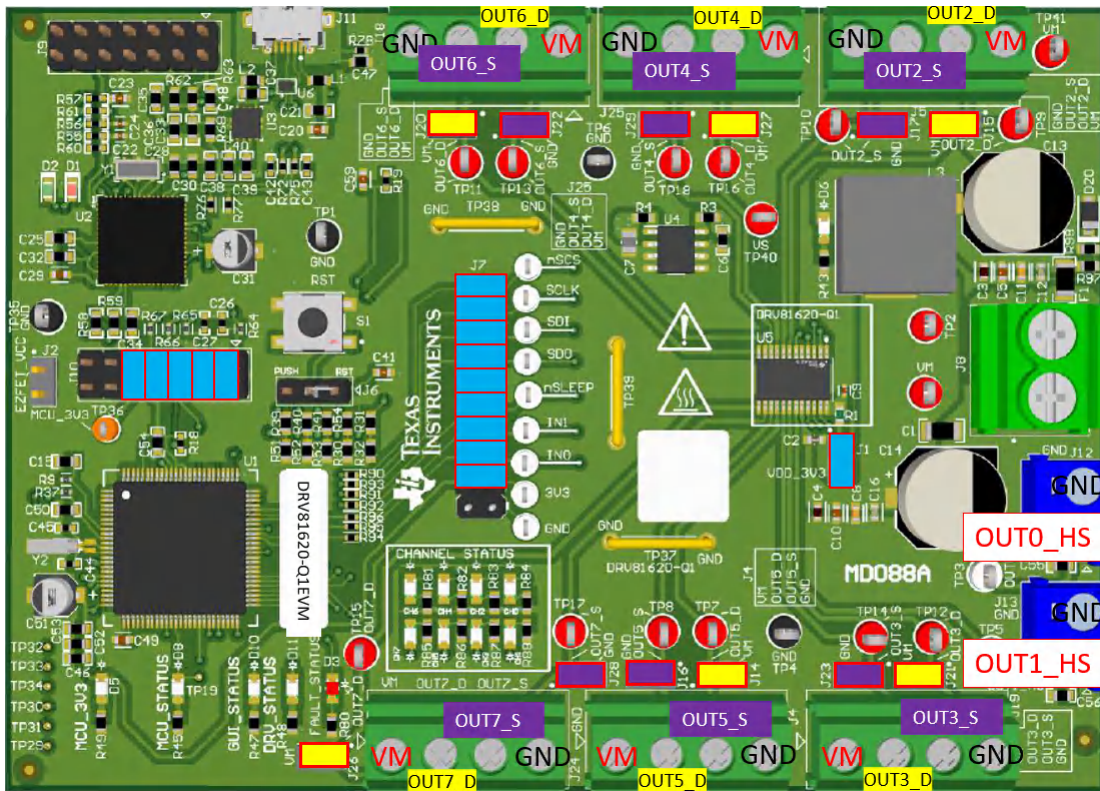


Figure 2-7. DRV81620-Q1 Jumper Configuration

The DRV81620-Q1 has six configurable outputs that can be used as a high-side switch or a low-side switch. If an output is being used as a high-side switch then the *yellow* jumpers need to be populated and the load connected from OUTx\_S to GND. If driving low-side loads the *purple* jumpers need to be populated and the corresponding load connected from OUTx\_S to VM. If an output is being used as a low-side switch then the *purple* jumpers need to be populated and the load connected from OUTx\_D to VM.

All EVMs require a VDD power supply for digital logic. Some of the configurable and high-side switch drivers require a jumper placement for additional power supply. See the table below for a description the device and jumper requirements.

Table 2-1. Power Jumper Configurations

| Device   | Jumpers | Description          |
|----------|---------|----------------------|
| DRV81004 | J1      | Connects 3.3V to VDD |
| DRV81008 | J1      | Connects 3.3V to VDD |
| DRV81080 | J1      | Connects 3.3V to VDD |
|          | J3      | Connects VM to VM1   |
| DRV81602 | J4      | Connects VM to VM2   |
|          | J1      | Connects 3.3V to VDD |
| DRV81242 | J1      | Connects 3.3V to VDD |
|          | J18     | Connects VM to VM_HS |
| DRV81620 | J1      | Connects 3.3V to VDD |

### 2.3 Hardware Setup

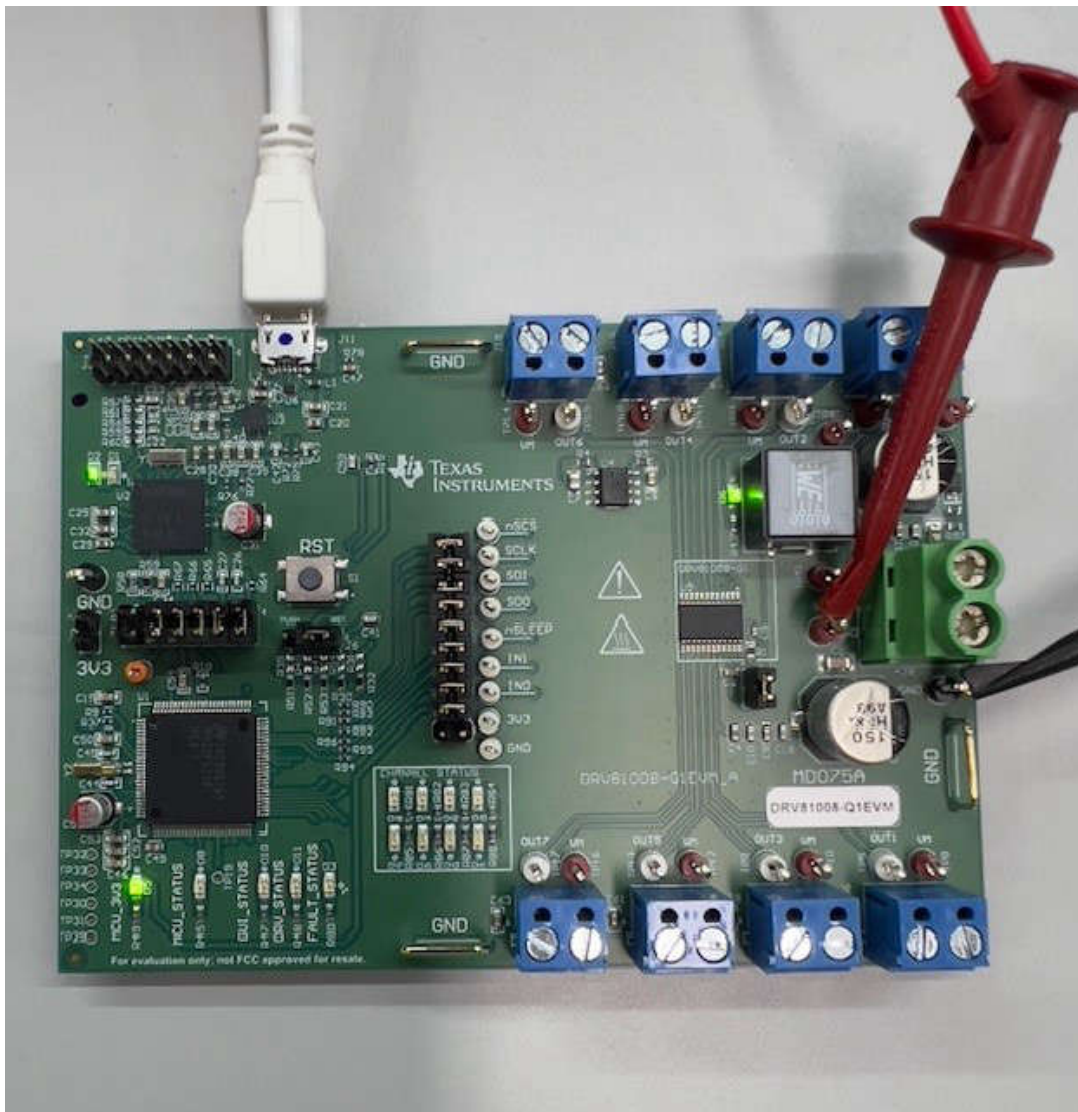
The EVM hardware is designed and kitted to simplify setup and begin spinning motors. The EVM comes with the jumpers placed at the appropriate location in the headers. The location of the jumpers, also called shunts, are shown in [Section 2.2](#).

**Note**

Before using the EVM, check that the shunt location matches the location shown in [Section 2.2](#).

Before connecting the EVM to the GUI software, follow these steps:

1. Connect EVM to PC via USB connector. D2 (EZFET), D5 (3.3V), must be solid ON.
2. Connect power supply (less than 40V) to power connector. Make sure terminals are connected correctly to avoid damage due to reverse battery connection.
3. Turn ON power supply D6 is solid ON.
4. Connect motor to the appropriate output connector.
5. Set up is now complete (see [Figure 2-8](#)).



**Figure 2-8. DRV81008-Q1EVM Hardware Setup**



### 3 Software

#### 3.1 Software Setup

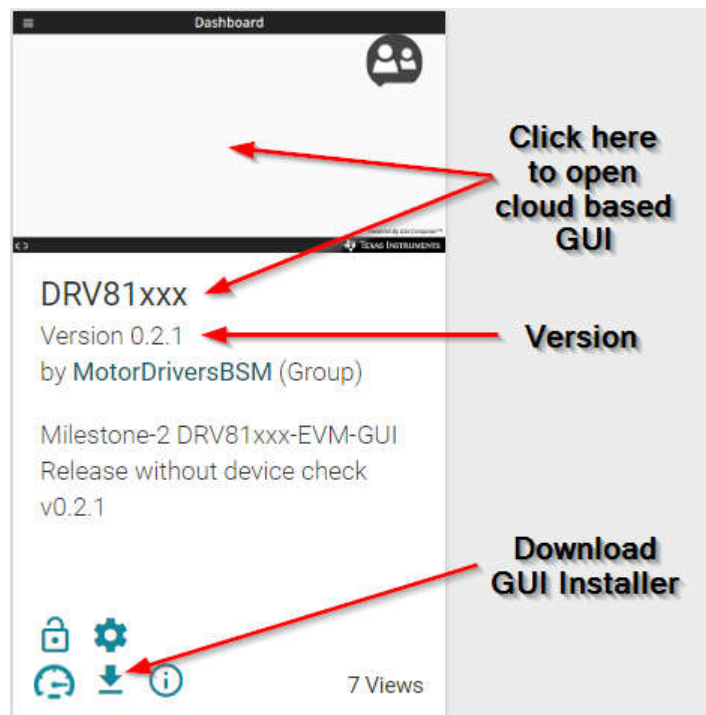
1. Install the TI MSP430 USB driver from [MSP430 FET Drivers](#).
  - a. Click on the first driver download link, [ti\\_msp430driver\\_setup\\_1.0.1.1-windows.zip | Windows Installer](#).
  - b. Please log in with myTI credentials when prompted and provide the requested information. The approval to access the download is automatic and immediate as long as the U.S. Government export approval requirements are complied with.
  - c. Click on the download button to download the installer to your PC.
  - d. Double-click on the downloaded zip file and run the installer by double-clicking on the .exe file. Complete the installation to install the required USB drivers to use the EVM on the PC.
    - i. Follow proper safety precautions working with sensitive electronics as well as high voltage and high current hardware.
    - ii. Power sequencing: The USB cable must be plugged in first between the EVM and the computer. Then turn on the power supply to the EVM. Powering the EVM external bench supply before connecting the USB cable can cause the USB device to not start up properly and result with driver error.
    - iii. Set up the bench supply to <=40V with current limit set to appropriate requirements of the motor.

#### 3.2 Web GUI Access or Local GUI Installation

The EVM is controlled via a GUI application and can be used via a chrome-based browser or installed locally to a PC. The web-based GUI can be found at this link: [GUI download](#).

To use the Web GUI (recommended), follow these steps:

1. Open the latest version of the GUI at this link: [DRV81xxx-EVM-GUI](#)
  - a. Alternatively, log into <https://dev.ti.com/gallery/> and search for *DRV81xxx* sorting by *Recently updated*.
  - b. Click on the title or blank space of the first search result to open the Web-Based GUI.



**Figure 3-1. TI GUI Composer Gallery Results for Launching or Downloading Local Installer**

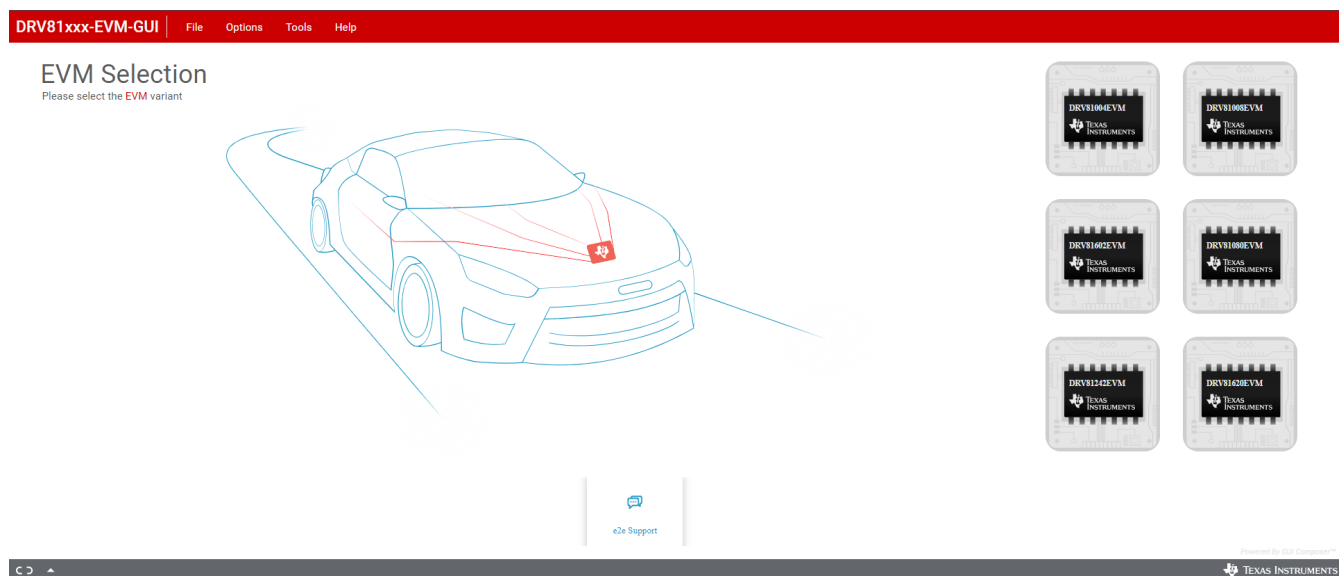
To install the GUI locally follow these steps:

1. Log in to <https://dev.ti.com/gallery/> using myTI log in credentials. Note that the GUI composer log in searches for a very specific username match including case input at the time of sign up.
2. Open the latest version of the GUI at this link: [DRV81xxx-EVM-GUI](#)
  - a. Alternatively, log into <https://dev.ti.com/gallery/> and search for *DRV81xxx* sorting by *Recently updated*.
3. Hover the mouse over the *Download* icon and select the installer for the relevant operating system from the top list. Refer back to the previous section for a visual depiction of the gallery page.
4. Extract the ZIP folder with the installer and run the installer. The installer contents is self-explanatory and look slightly different for each OS.
5. Click *Next* and then agree to the terms and conditions on the following page.
6. Keep the application and runtime directory to the default locations. Click *Next* to install GUI.
7. Select *Download from Web* to download the GUI Composer Runtime if prompted, then click *Next*.
  - a. If a network firewall prevents Runtime download from the web, then the Runtime installer can be downloaded at this link: [Runtime installer](#).
8. Check the box to create a desktop shortcut and click *Finish* to complete installation. GUI is now installed.
9. GUI is now installed.

### 3.3 Connecting EVM to GUI

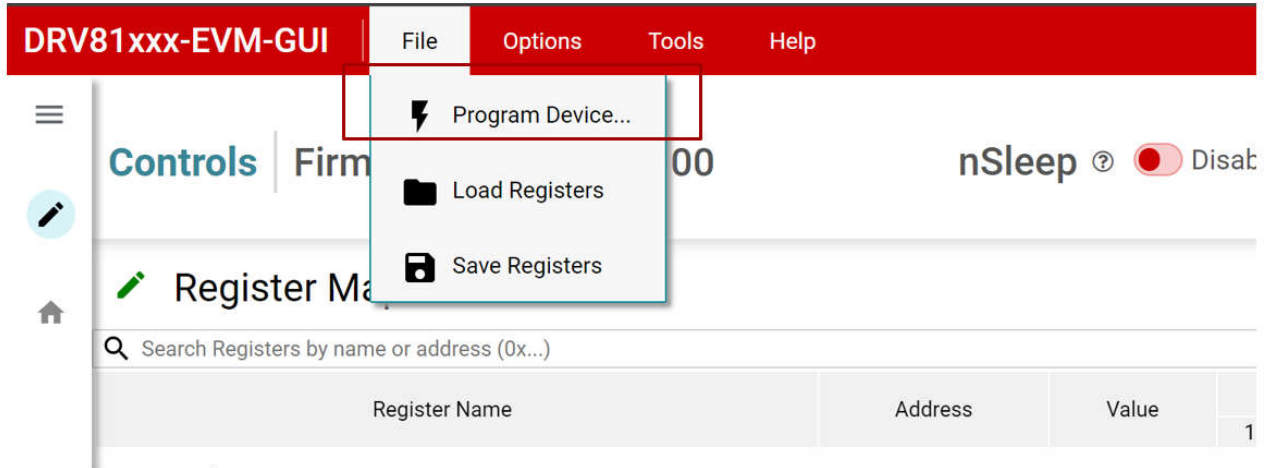
Now, that the EVM hardware setup and GUI installation is complete, the EVM can now be connected to the GUI. The following steps outline how to connect the EVM to GUI:

- With the EVM connected to the PC, open the GUI. The home page or landing page of the GUI is shown in [Figure 3-2](#).



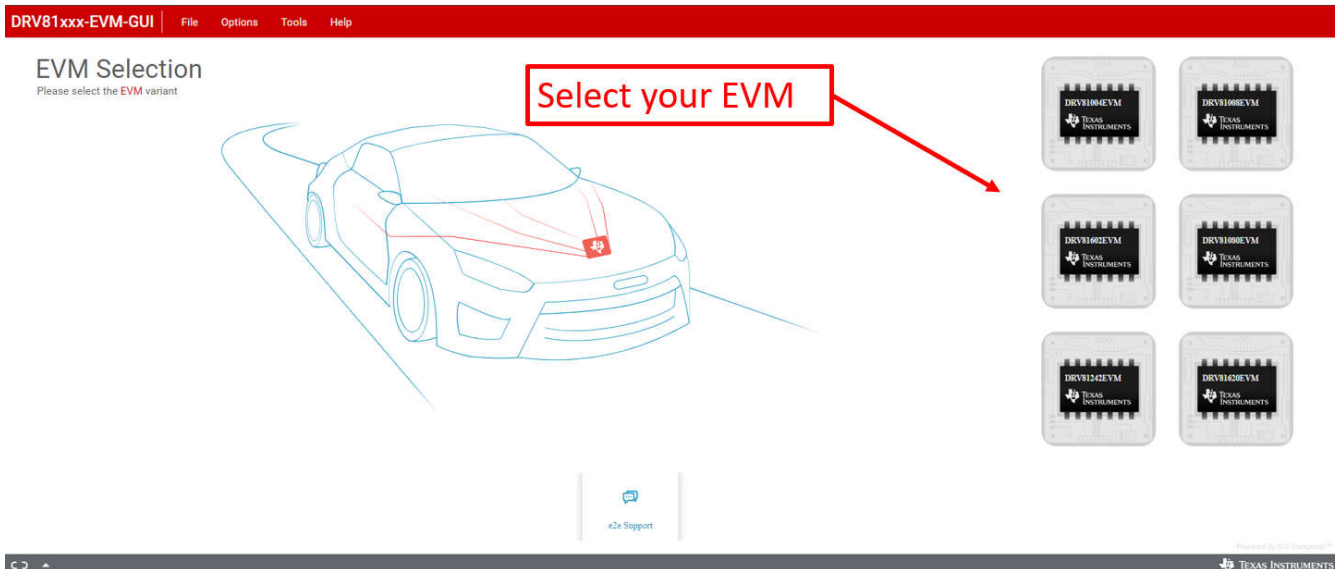
**Figure 3-2. GUI Landing Page**

- Program EVM with latest software by clicking on *File* -> *Program Device* (See )[Figure 3-3](#). This needs to be done the first time the user sets up the EVM, as a software update can have been released since the EVM was initially programmed.



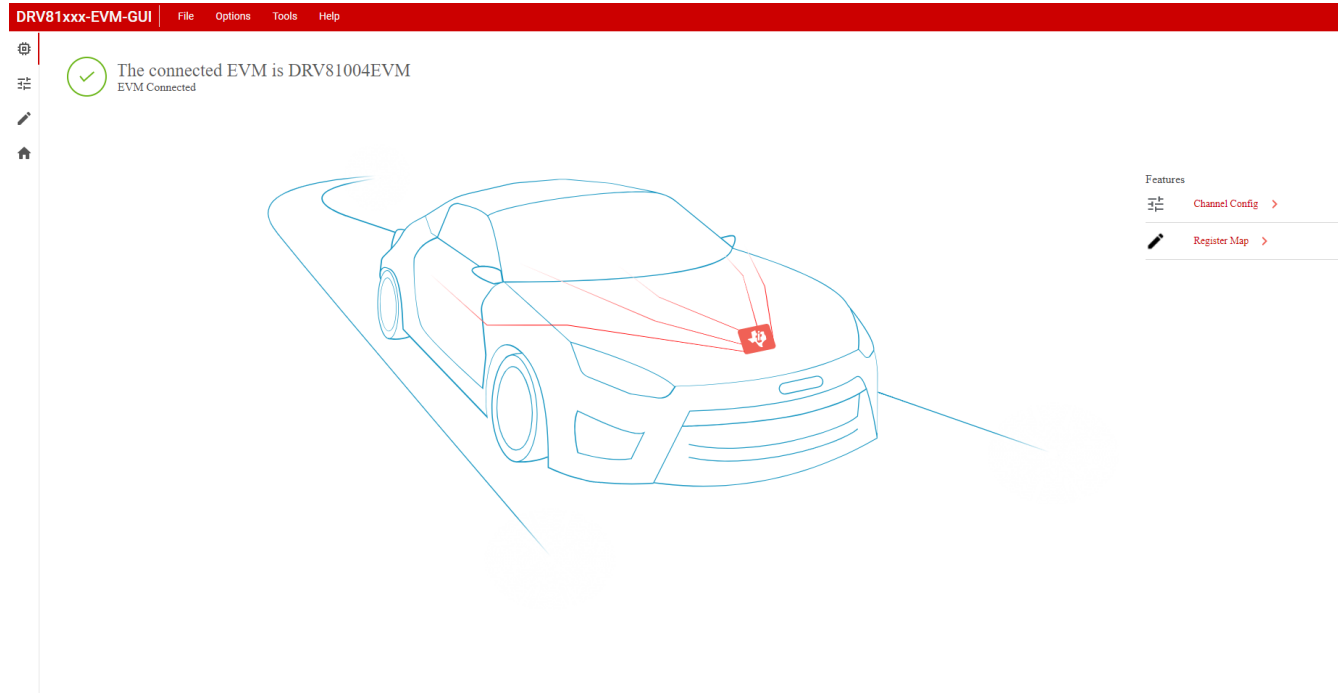
**Figure 3-3. Program Device**

- Select the appropriate GUI variant from the six options for the EVM (see [Figure 3-4](#)).



**Figure 3-4. EVM Selection**

- The GUI attempts to connect with EVM. The GUI displays the following once successfully connected. If there is no successful connection, then double check the correct steps are followed in [Section 2.3](#).



**Figure 3-5. Successful GUI Connection**

- Once successfully connected, click on *Quick Start* to open the Channel Config. page under Features section to open the main control page.
- The GUI setup is now complete. The following section provides an overview of the GUI and how to use the GUI to control EVM.

### 3.4 GUI Overview

These following sections provides an overview for each of the GUI variants from the DRV81xxx-Q1 family of devices. The GUI variant is selected in the GUI home page.

### 3.4.1 Low-Side Drivers: DRV81004-Q1 and DRV81008-Q1

The DRV81004-Q1 and DRV81008-Q1 are multi-channel low-side drivers with integrated protection and diagnostic functions. The following images and table can be used as a guide to configure the motor driver through the GUI to control relays and LEDs in automotive and industrial applications.

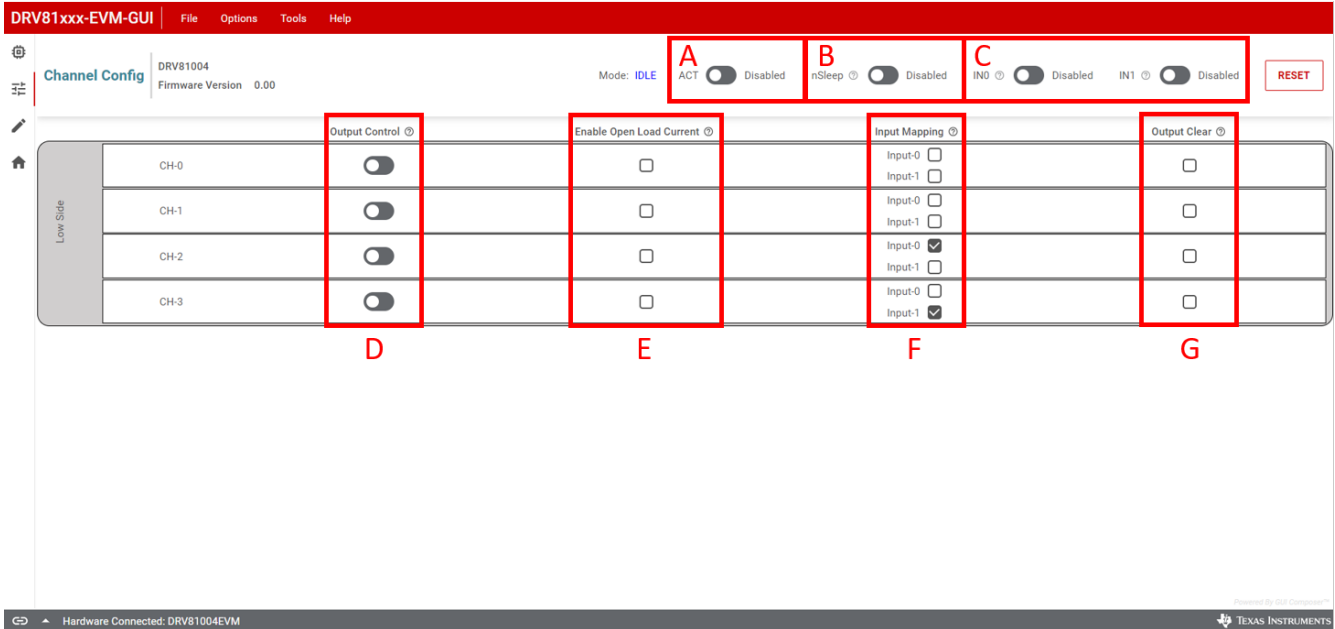


Figure 3-6. DRV81004-Q1 GUI Channel Configuration Page

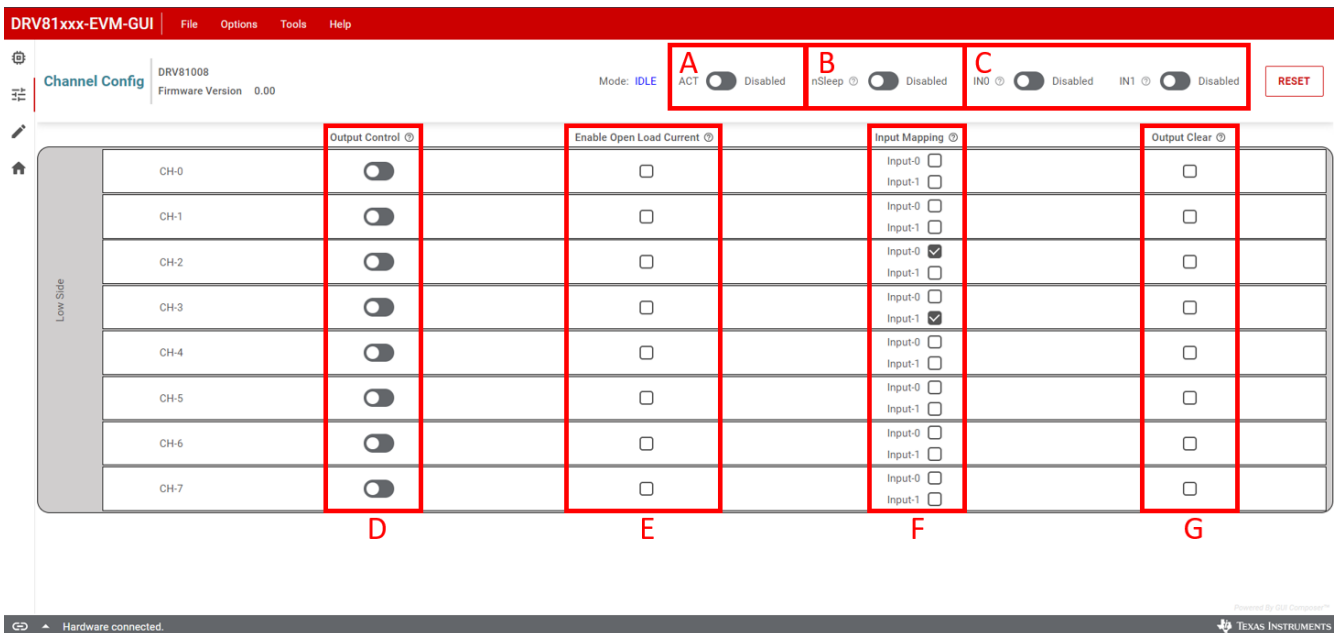


Figure 3-7. DRV81008-Q1 GUI Channel Configuration Page

**Table 3-1. DRV81004-Q1 and DRV81008-Q1**

| Component | Description  |
|-----------|--|
| A         | Active Mode <ul style="list-style-type: none"> <li>• Disabled (default): device in Idle Mode.</li> <li>• Enabled: device in Active Mode.</li> </ul>  |
| B         | nSLEEP <ul style="list-style-type: none"> <li>• Disabled (default): low-current sleep mode.</li> <li>• Enabled: activates Idle mode.</li> </ul>  |
| C         | Input Pins (IN0 and IN1) <ul style="list-style-type: none"> <li>• Disabled: the input pin is set to logic low.</li> <li>• Enabled: the input pin is set to logic high.</li> </ul>  |
| D         | Output Control <ul style="list-style-type: none"> <li>• Disabled (default): output x is OFF.</li> <li>• Enabled: output is ON.</li> </ul>  |
| E         | Enable Open Load Current <ul style="list-style-type: none"> <li>• Disabled (default): IOL current source not enabled.</li> <li>• Enabled: IOL current source enabled.</li> </ul>   |
| F         | Input Mapping <ul style="list-style-type: none"> <li>• Disabled (default): Output x is not connected to the input pin.</li> <li>• Enabled: Output x is connected to the input pin.</li> </ul> <hr style="width: 50%; margin: 10px auto;"/> <p style="text-align: center;"><b>Note</b></p> <p style="text-align: center;">By default, IN0 is connected to CH-2 and IN1 is connected to CH-3.</p> <hr style="width: 50%; margin: 10px auto;"/> |
| G         | Output Clear <ul style="list-style-type: none"> <li>• Disabled (default): normal operation.</li> <li>• Enabled: clear the error latch for the selected output.</li> </ul>  |

### 3.4.2 High-Side Driver: DRV81080-Q1

The DRV81080-Q1 is a eight channel high-side driver with integrated protection and diagnostics. The following image and table can be used as a guide to configure the motor driver through the GUI to control relays, LEDs, Lamps and motors in automotive and industrial applications.

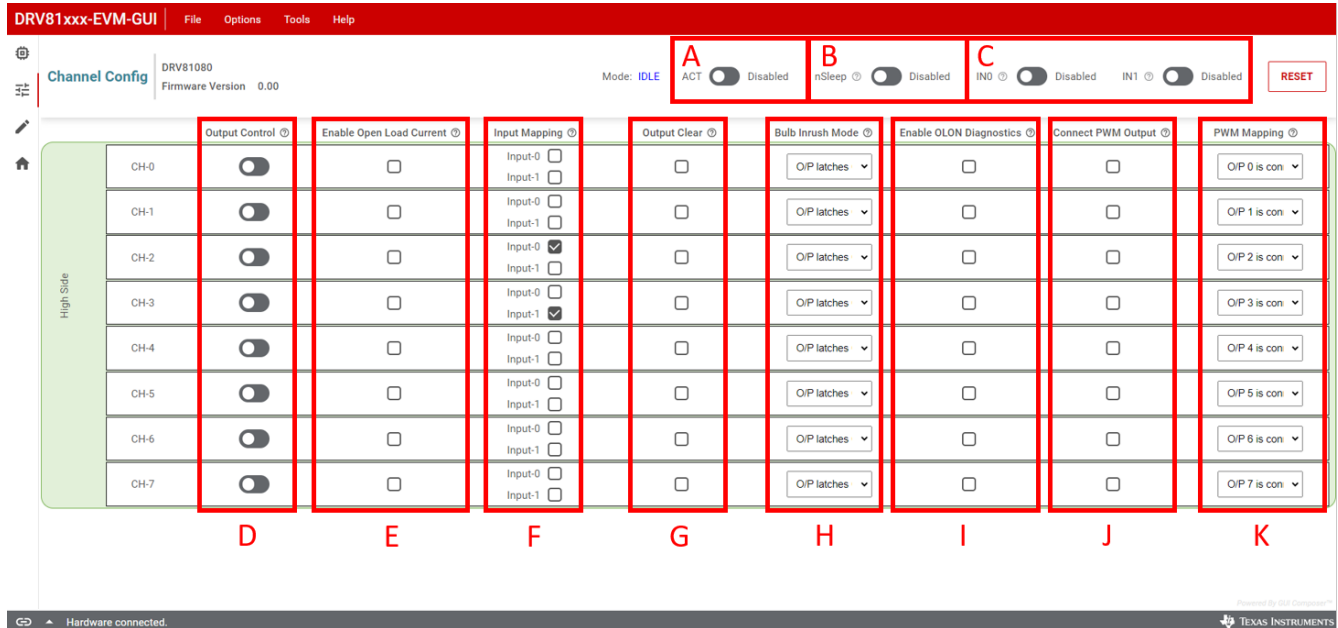


Figure 3-8. DRV81080-Q1 GUI Channel Configuration Page

Table 3-2. DRV81080-Q1

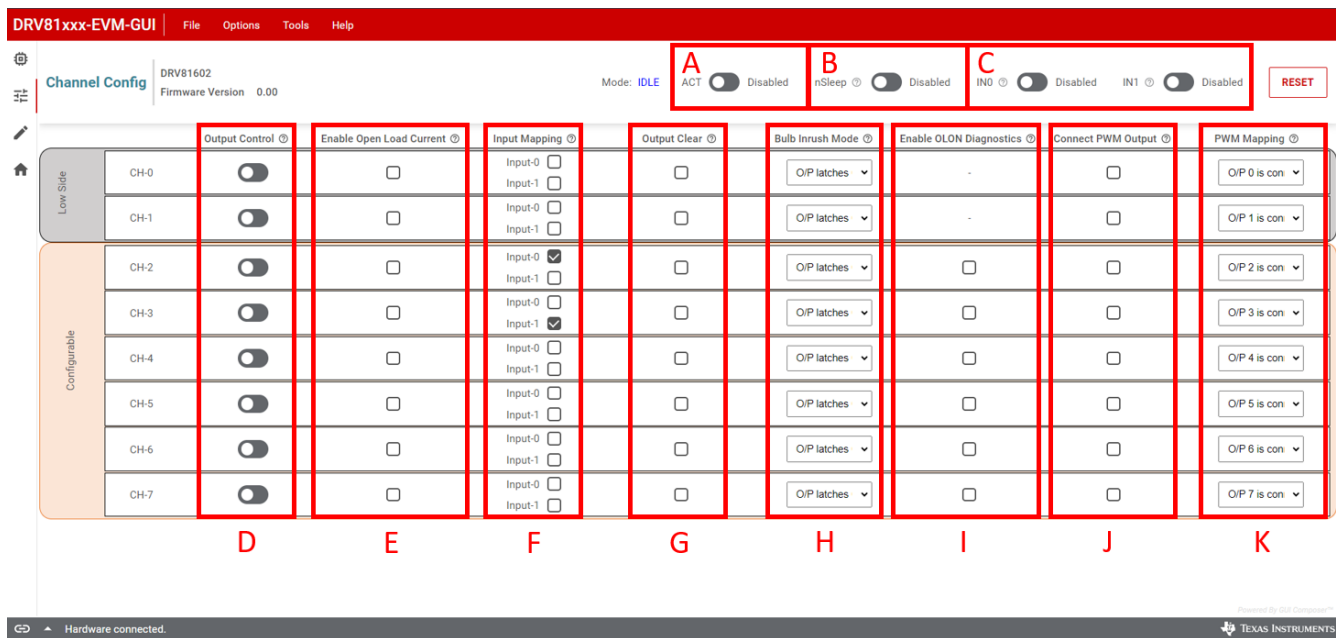
| Component | Description  |
|-----------|--|
| A         | <p>Active Mode</p> <ul style="list-style-type: none"> <li>Disabled (default): device in Idle Mode.</li> <li>Enabled: device in Active Mode.</li> </ul>   |
| B         | <p>nSLEEP</p> <ul style="list-style-type: none"> <li>Disabled (default): low-current sleep mode.</li> <li>Enabled: activates Idle mode.</li> </ul>   |
| C         | <p>Input Pins (IN0 and IN1)</p> <ul style="list-style-type: none"> <li>Disabled: the input pin is set to logic low.</li> <li>Enabled: the input pin is set to logic high.</li> </ul>   |
| D         | <p>Output Control</p> <ul style="list-style-type: none"> <li>Disabled (default): output x is OFF.</li> <li>Enabled: output is ON.</li> </ul>   |
| E         | <p>Enable Open Load Current</p> <ul style="list-style-type: none"> <li>Disabled (default): IOL current source not enabled.</li> <li>Enabled: IOL current source enabled.</li> </ul>  |
| F         | <p>Input Mapping</p> <ul style="list-style-type: none"> <li>Disabled (default): output x is not connected to the input pin..</li> <li>Enabled: output x is connected to the input pin.</li> </ul> <p style="text-align: center;"><b>Note</b></p> <p>By default, IN0 is connected to CH-2 and IN1 is connected to CH-3.</p> |

**Table 3-2. DRV81080-Q1 (continued)**

| Component | Description   |
|-----------|---|
| G         | Output Clear <ul style="list-style-type: none"> <li>Disabled (default): normal operation.</li> <li>Enabled: clear the error latch for the selected output.</li> </ul>                             |
| H         | Bulb Inrush Mode <ul style="list-style-type: none"> <li>Disabled (default): output latches OFF in case of errors.</li> <li>Enabled: output restarts automatically in case of errors.</li> </ul>   |
| I         | Enable OLON Diagnostics <ul style="list-style-type: none"> <li>Disabled (default): normal operation or diagnosis performed on channel OFF.</li> <li>Enabled: open load at ON detected.</li> </ul> |
| J         | Connect PWM Output <ul style="list-style-type: none"> <li>Disabled (default): PWM generator not connected to output.</li> <li>Enabled: PWM generator connected to output.</li> </ul>              |
| K         | PWM Mapping <ul style="list-style-type: none"> <li>0: Output connected to PWM generator 0.</li> <li>1: Output connected to PWM generator 1.</li> </ul>  |

**3.4.3 Configurable HS/LS: DRV81602-Q1, DRV81242-Q1, and DRV81620-Q1**

The DRV81602-Q1, DRV81242-Q1, and DRV81620-Q1 are configurable high-side and low-side drivers with integrated protection and diagnostics. The configurable driver GUIs are set up in the same configuration and offers many of the same features and functionalities as the DRV81080-Q1 high-side driver. Minor differences include exclusion of Enabling OLON Diagnostics for dedicated low-side drivers in certain variants.



**Figure 3-9. DRV81602-Q1 GUI Channel Configuration Page**



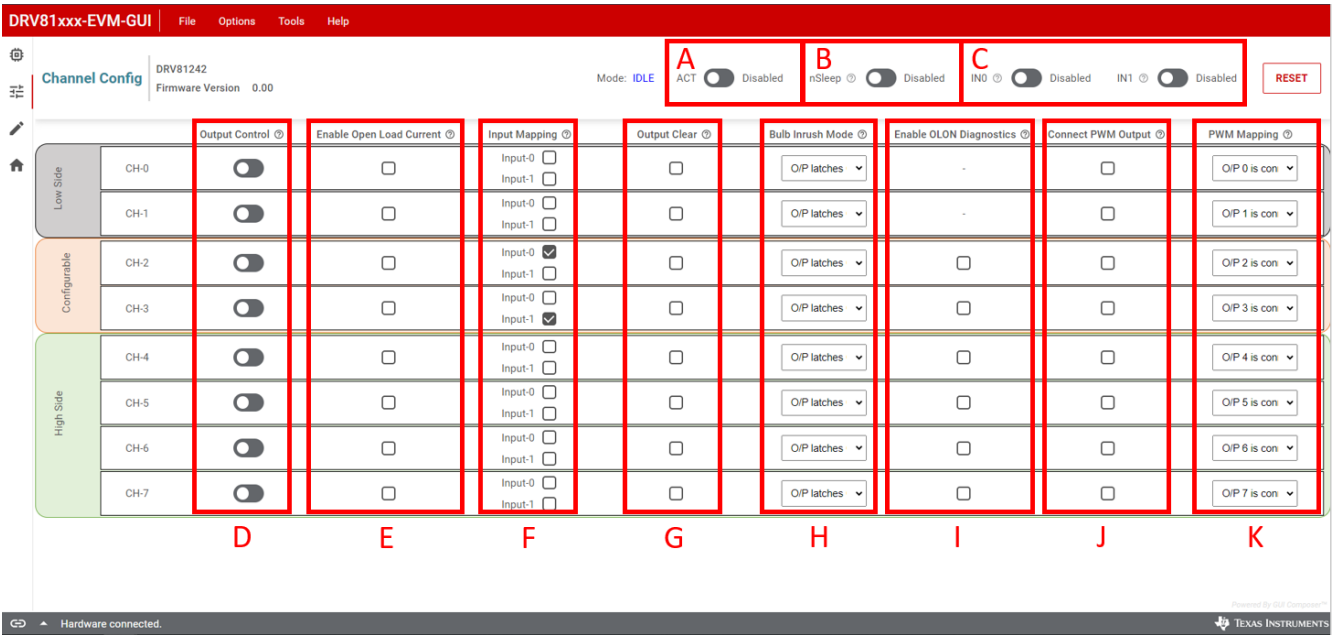


Figure 3-10. DRV81242-Q1 GUI Channel Configuration Page

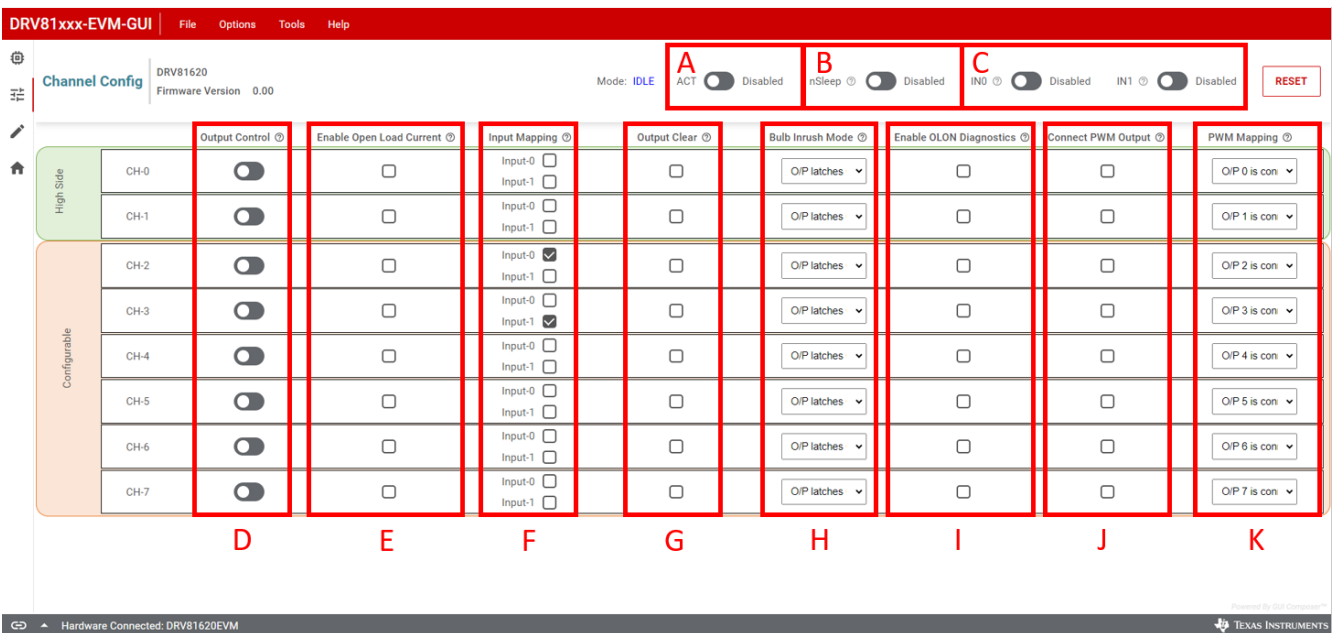


Figure 3-11. DRV81620-Q1 GUI Channel Configuration Page

**Table 3-3. DRV81602-Q1, DRV81242-Q1, and DRV81620-Q1**

| Component | Description   |
|-----------|---|
| A         | Active Mode <ul style="list-style-type: none"> <li>Disabled (default): device in Idle Mode.</li> <li>Enabled: device in Active Mode.</li> </ul>   |
| B         | nSLEEP <ul style="list-style-type: none"> <li>Disabled (default): low-current sleep mode.</li> <li>Enabled: activates Idle mode.</li> </ul>   |
| C         | Input Pins (IN0 and IN1) <ul style="list-style-type: none"> <li>Disabled: the input pin is set to logic low.</li> <li>Enabled: the input pin is set to logic high.</li> </ul>   |
| D         | Output Control <ul style="list-style-type: none"> <li>Disabled (default): Output x is OFF.</li> <li>Enabled: Output is ON.</li> </ul>   |
| E         | Enable Open Load Current <ul style="list-style-type: none"> <li>Disabled (default): IOL current source not enabled.</li> <li>Enabled: IOL current source enabled.</li> </ul>  |
| F         | Input Mapping <ul style="list-style-type: none"> <li>Disabled (default): output x is not connected to the input pin..</li> <li>Enabled: output x is connected to the input pin.</li> </ul> <hr/> <p style="text-align: center;"><b>Note</b></p> <p style="text-align: center;">By default, IN0 is connected to CH-2 and IN1 is connected to CH-3.</p> <hr/> |
| G         | Output Clear <ul style="list-style-type: none"> <li>Disabled (default): normal operation.</li> <li>Enabled: clear the error latch for the selected output.</li> </ul>   |
| H         | Bulb Inrush Mode <ul style="list-style-type: none"> <li>Disabled (default): Output latches OFF in case of errors.</li> <li>Enabled: output restarts automatically in case of errors.</li> </ul>   |
| I         | Enable OLON Diagnostics <ul style="list-style-type: none"> <li>Disabled (default): normal operation or diagnosis performed on channel OFF.</li> <li>Enabled: open load at ON detected.</li> </ul>   |
| J         | Connect PWM Output <ul style="list-style-type: none"> <li>Disabled (default): PWM generator not connected to output.</li> <li>Enabled: PWM generator connected to output.</li> </ul>  |
| K         | PWM Mapping <ul style="list-style-type: none"> <li>0: output connected to PWM generator 0.</li> <li>1: output connected to PWM generator 1.</li> </ul>  |

## 4 Hardware Design Files

The schematics, bill of materials (BOM), PCB layout, and 3D model STEP file for each EVM can be downloaded on the respective product folder page under the Design Files section.

- <https://www.ti.com/tool/DRV81004EVM#design-files>
- <https://www.ti.com/tool/DRV81008EVM#design-files>
- <https://www.ti.com/tool/DRV81602EVM#design-files>
- <https://www.ti.com/tool/DRV81080EVM#design-files>
- <https://www.ti.com/tool/DRV81242EVM#design-files>
- <https://www.ti.com/tool/DRV81620EVM#design-files>

### 4.1 Schematics

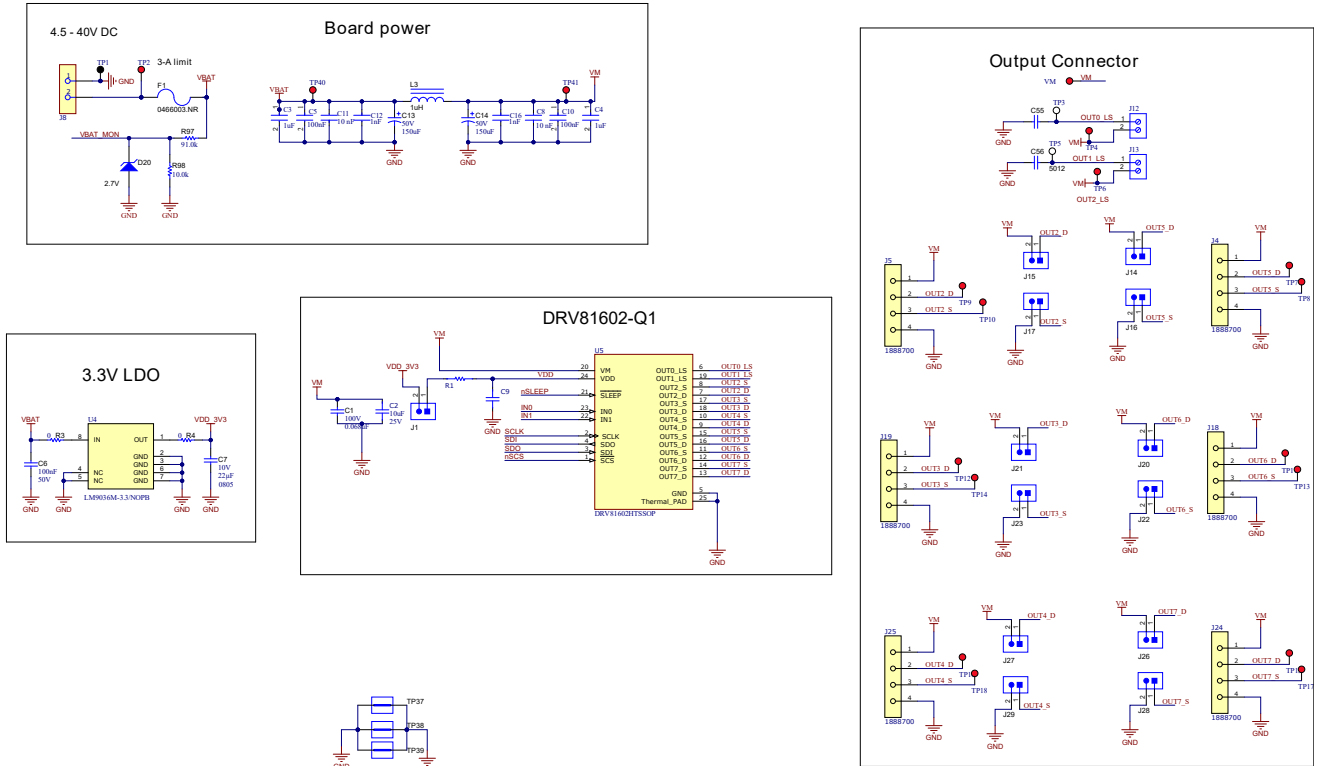


Figure 4-1. Motor Driver DRV81602-Q1, LDO, and Output Connectors

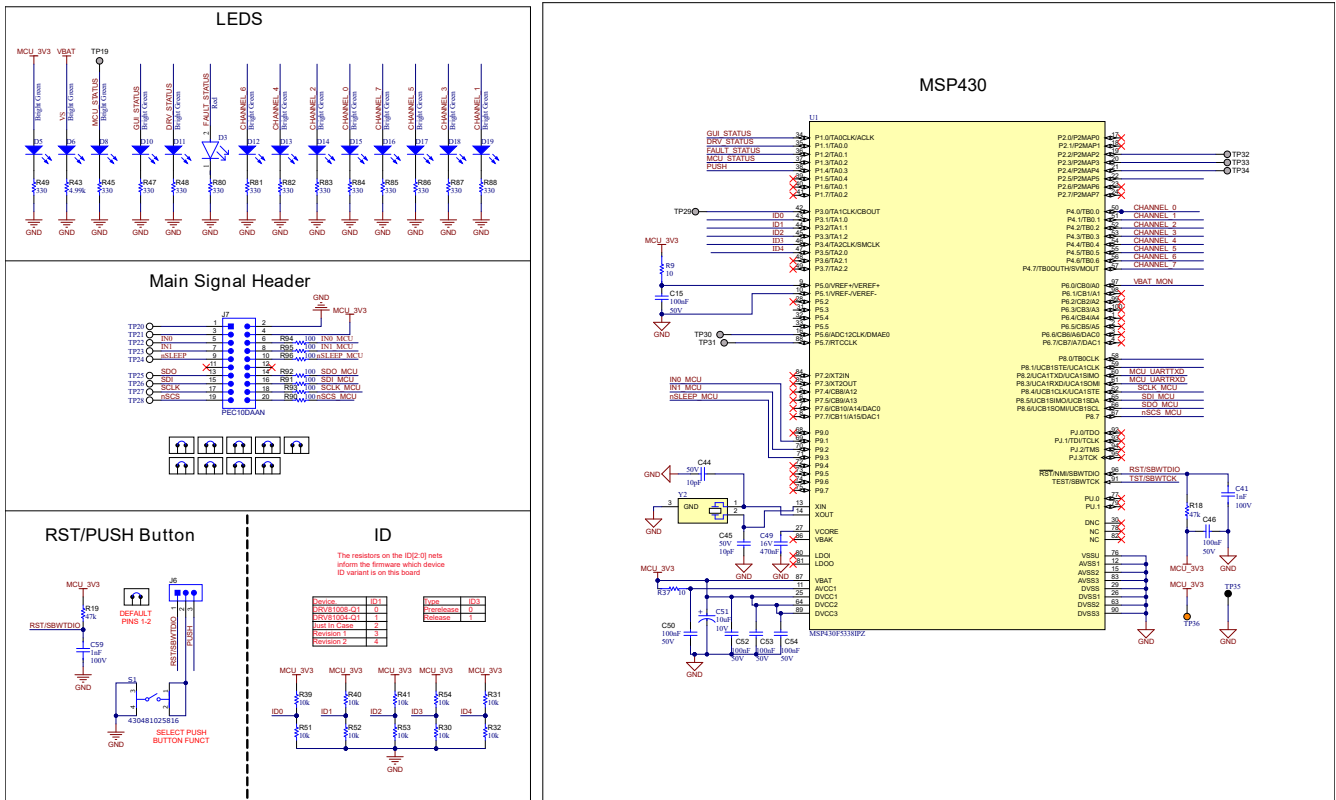


Figure 4-2. MSP430, ID Resistors, and LEDs

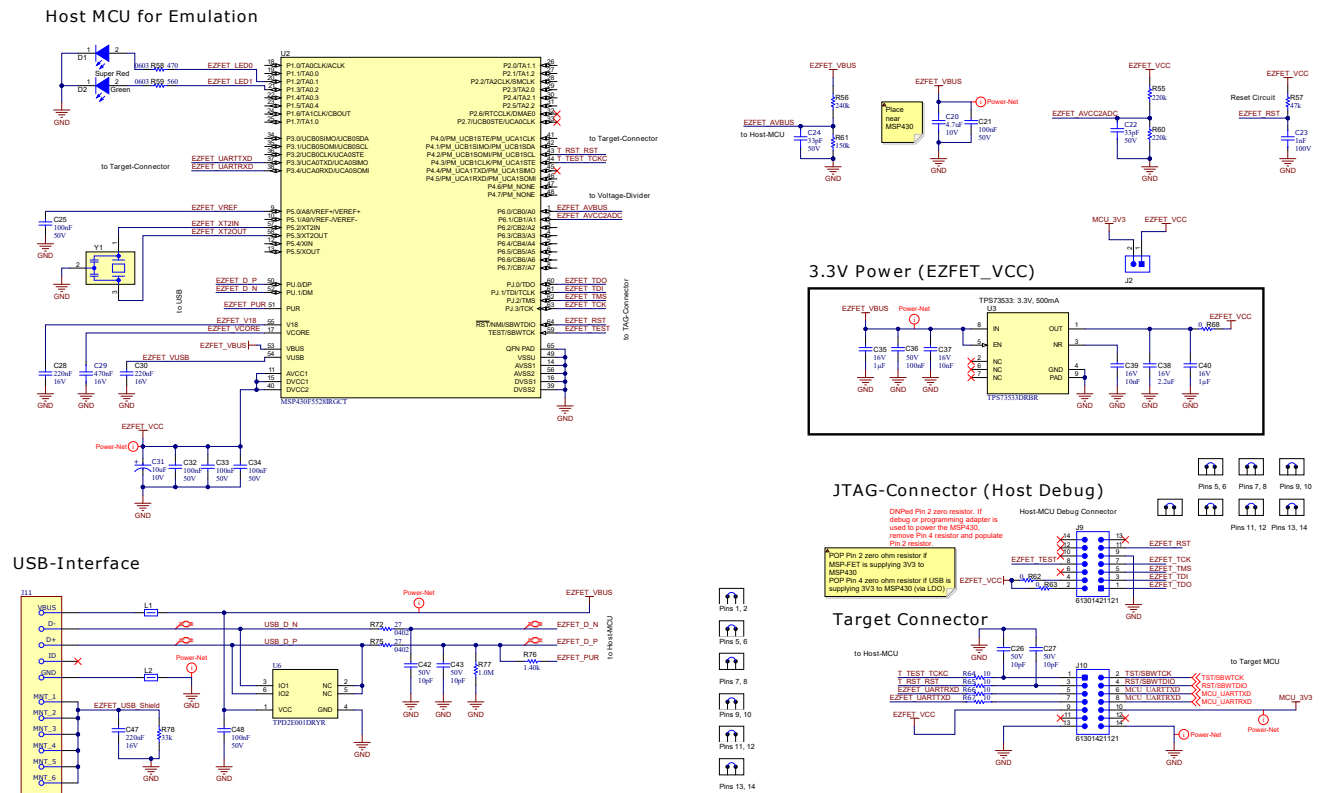


Figure 4-3. EZFET and USB

## 4.2 PCB Layouts

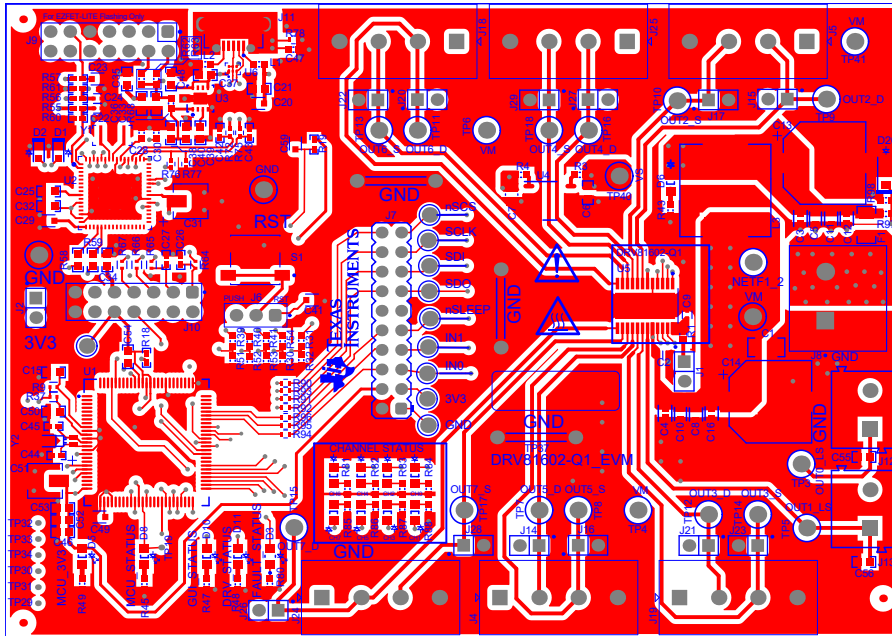


Figure 4-4. Top Layer

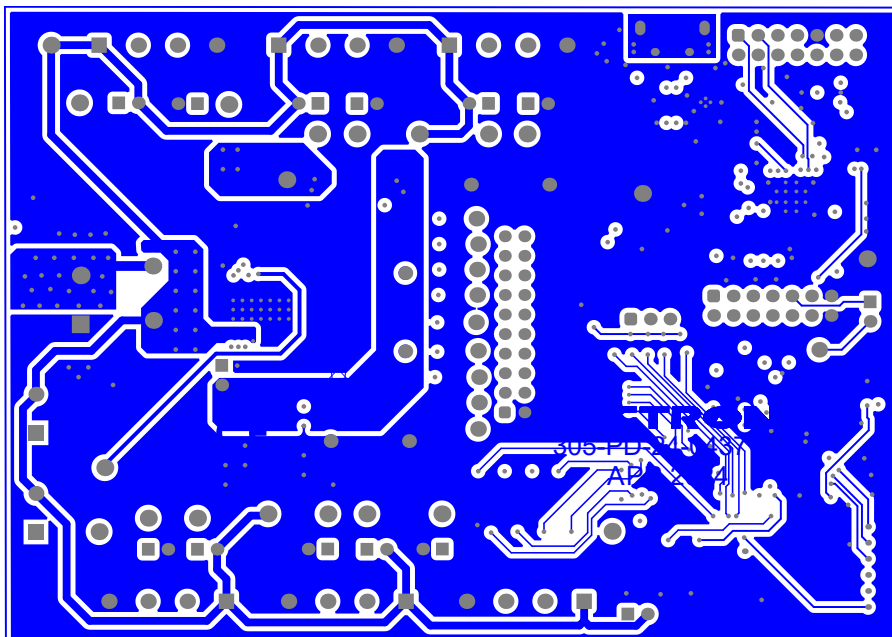


Figure 4-5. Bottom Layer

### 4.3 Bill of Materials (BOM)

**Table 4-1. Bill of Materials (DRV81602-Q1EVM)**

| Designator  | Quantity | Value    | Description   | Footprint                      | Part Number        | Manufacturer       |
|---|----------|----------|---|--------------------------------|--------------------|--------------------|
| C1  | 1        | 0.068uF  | CAP, CERM, 0.068uF, 100V, +/- 10%, X7R, 1206                  | 1206                           | 12061C683KAT2A     | AVX                |
| C2  | 1        | 10µF     | 10µF ±20% 25V Ceramic Capacitor X5R 0603 (1608 Metric)        | FP-ZRB18AR61E106ME01L_0603-MFG | ZRB18AR61E106ME01L | Murata Electronics |
| C3, C4  | 2        |          | Ceramic Capacitor General Use 1uF ±10% 50V X7R 0603           | FP-0603-L_1_6_0_15-W_0_8-IPC_C | UMK107AB7105KA-T   | Taiyo Yuden        |
| C5, C10   | 2        | 100nF    | CAP CER 0.1UF 50V X7R 0603                                    | FP-885012206095-MFG            | 885012206095       | Würth Elektronik   |
| C6, C15, C21, C25, C32, C33, C34, C36, C46, C48, C50, C52, C53, C54 | 14       | 0.1uF    | CAP, CERM, 0.1uF, 50V, +/- 10%, X7R, 0603                     | 0603                           | 885012206095       | Würth Elektronik   |
| C7  | 1        | 22uF     | CAP, CERM, 22µF, 10V,+/- 20%, X5R, 0805                       | 0805_150                       | 885012107011       | Würth Elektronik   |
| C8, C11   | 2        | 10nF     | CAP CER 10000PF 50V X7R 0603                                  | FP-CC0603-DA-MFG               | CC0603KPX7R9BB103  | YAGEO              |
| C9  | 1        | 100nF    | 0.1µF ±10% 10V Ceramic Capacitor X7R 0402 (1005 Metric)       | FP-885012205018_0402-MFG       | 885012205018       | Würth Electronics  |
| C12, C16  | 2        | 1,000 pF | CAP CER 1000PF 50V X7R 0603                                   | FP-C0603C-CF-MFG               | C0603C102J5RACAUTO | KEMET              |
| C13, C14  | 2        | 150uF    | CAP, AL, 150uF, 50V, +/- 20%, 0.18 ohm, AEC-Q200 Grade 2, SMD | SM_RADIAL_G                    | EEE-FK1H151P       | Panasonic          |
| C20   | 1        | 4.7µF    | 4.7µF ±20% 10V Ceramic Capacitor X5R 0603 (1608 Metric)       | FP-885012106012_0603-MFG       | 885012106012       | Würth Electronics  |
| C22, C24  | 2        | 33pF     | 33pF ±5% 50V Ceramic Capacitor C0G, NP0 0402 (1005 Metric)    | FP-885012005058_0402-MFG       | 885012005058       | Würth Electronics  |
| C23, C41, C59   | 3        | 1nF      | 1000pF ±5% 100V Ceramic Capacitor C0G, NP0 0603 (1608 Metric) | FP-885012006085_0603-MFG       | 885012006085       | Würth Electronics  |
| C26, C27, C42, C43, C44, C45  | 6        | 10pF     | CAP, CERM, 10pF, 50V, +/- 5%, C0G/NP0, 0402                   | 0402                           | 885012005055       | Würth Elektronik   |
| C28, C30, C47   | 3        | 0.22uF   | CAP, CERM, 0.22uF, 16V, +/- 10%, X7R, 0603                    | 0603L                          | 885012206048       | Würth Elektronik   |
| C29, C49  | 2        | 470nF    | 0.47µF ±10% 16V Ceramic Capacitor X7R 0603 (1608 Metric)      | FP-885012206050_0603-MFG       | 885012206050       | Würth Electronics  |

**Table 4-1. Bill of Materials (DRV81602-Q1EVM) (continued)**

| Designator  | Quantity | Value     | Description  | Footprint                                      | Part Number     | Manufacturer                   |
|---|----------|-----------|--|--|-----------------|--------------------------------|
| C31, C51  | 2        | 10µF      | Alum. Polymer Cap 10µF 10V 5.5mmV-Chip<br>WCAP-PSLP Series Lifetime 2000h +105°C                 | FP-875105240001_SMT_CAP<br>_4MM3_4MM3-MFG      | 875105240001    | Würth Electronics              |
| C35, C40  | 2        | 1uF       | CAP, CERM, 1uF, 16V, +/- 10%, X7R, 0603  | 0603   | 885012206052    | Würth Elektronik               |
| C37, C39  | 2        | 0.01uF    | CAP, CERM, 0.01uF, 16V, +/- 10%, X7R, 0603   | 0603   | 885012206040    | Würth Elektronik               |
| C38   | 1        | 2.2uF     | CAP, CERM, 2.2uF, 16V, +/- 20%, X5R, 0603  | 0603   | 885012106018    | Würth Elektronik               |
| C55, C56  | 2        | 0.01uF    | CAP, CERM, 0.01µF, 100V,+/- 10%, X7R, 0603   | 0603   | 885012206114    | Würth Elektronik               |
| D1  | 1        | Super Red | LED, Super Red, SMD  | WL-SMCW_RED                                    | 150060SS75000   | Würth Elektronik               |
| D2  | 1        | Green     | LED, Green, SMD  | WL-SMCW_GREEN                                  | 150060VS75000   | Würth Elektronik               |
| D5, D6, D8, D10,<br>D11, D12, D13, D14,<br>D15, D16, D17, D18,<br>D19       | 13       |           | SMD mono-color Chip LED, WL-SMCW, Bright<br>Green  | 0805_A   | 150080VS75000   | Wuerth Elektronik              |
| D20   | 1        | 2.7V      | Diode, Zener, 2.7V, 500 mW, SOD-123  | SOD-123  | MMSZ4682-E3-08  | Vishay-Semiconductor           |
| F1  | 1        |           | Fuse, 3A, 32VAC/VDC, SMD   | 1206   | 0466003.NR      | Littelfuse                     |
| FID1, FID2, FID3  | 0        |           | Fiducial mark. There is nothing to buy or<br>mount.  | Fiducial10-20                                  | N/A             | N/A                            |
| H1, H2, H3, H4  | 4        |           | Bumpon, Hemisphere, 0.44 X 0.20, Clear   | Bumpon_SJ5003Transparent                       | SJ-5303 (CLEAR) | 3M                             |
| J1, J2, J14, J15, J16,<br>J17, J20, J21, J22,<br>J23, J26, J27, J28,<br>J29 | 14       |           | Header, 100mil, 2x1, Gold, TH  | Samtec_HTSW-102-07-G-S                         | HTSW-102-07-G-S | Samtec                         |
| J4, J5, J18, J19, J24,<br>J25   | 6        |           | Conn; Term Blk; PCB; Screw; 4; 5.08mm;<br>Front; 24-14 AWG; 16A; 250V; Solder                    | FP-1888700_HDR4-MFG                            | 1888700         | Phoenix Contact                |
| J6  | 1        |           | Header, 2.54mm, 3x1, Gold, TH  | WURTH_61300311121                              | 61300311121     | Würth Elektronik               |
| J7  | 1        |           | Header, 2.54mm, 10x2, Tin, TH  | SULLINS_PEC10DAAN                              | PEC10DAAN       | Sullins Connector<br>Solutions |
| J8  | 1        |           | 2 Position Wire to Board Terminal Block<br>Horizontal with Board 0.250" (6.35mm)<br>Through Hole | FP-691250610002_CONN_TE<br>RM_BLOCK2-MFG       | 691250610002    | Würth Electronics              |
| J9, J10   | 2        |           | Header, 2.54mm, 7x2, Gold, TH  | Würth_61301421121                              | 61301421121     | Würth Elektronik               |
| J11   | 1        |           | Conn Micro USB 2.0 Type AB RCP 5 POS<br>0.65mm Solder RA SMD 5 Terminal 1 Port T/R               | FP-629105150921_CONN_PT<br>H_USB_8MM0_5MM6-MFG | 629105150921    | Würth Electronics              |

**Table 4-1. Bill of Materials (DRV81602-Q1EVM) (continued)**

| Designator   | Quantity | Value   | Description   | Footprint                  | Part Number       | Manufacturer      |
|--|----------|---------|---|----------------------------|-------------------|-------------------|
| J12, J13   | 2        |         | Series 101 - 5.00mm Horizontal Entry Modular with Pressure Clamp WR-TBL, 2 pin  | 691101710002               | 691101710002      | Würth Elektronik  |
| L1, L2   | 2        | 140 ohm | Ferrite Bead, 140 ohm at 100MHz, 0.55A, 0603  | 0603L                      | 742792621         | Würth Elektronik  |
| L3   | 1        | 1uH     | Inductor, Shielded Drum Core, Ferrite, 1uH, 24A, 0.0012 ohm, SMD  | WE-HCC_1210                | 7443320100        | Würth Elektronik  |
| LBL1   | 1        |         | Thermal Transfer Printable Labels, 0.650" W x 0.200" H - 10,000 per roll  | Label_650x200              | THT-14-423-10     | Brady             |
| LBL2   | 0        |         | Harsh Environment Multi-Purpose Polyester Labels for 3" Core Printers - 0.375" x 0.375", White                                  | Label_375x375              | THT-14-423-10     | Brady             |
| R1   | 1        | 100     | 100 Ohms ±5% 0.2W, 1/5W Chip Resistor 0603 (1608 Metric) Automotive AEC-Q200, Moisture Resistant, Pulse Withstanding Thick Film | FP-SG73S1JTDD101J_0603-MFG | SG73S1JTDD101J    | KOA Speer         |
| R3, R4, R45, R47, R48, R49, R62, R63, R68, R80, R81, R82, R83, R84, R85, R86, R87, R88 | 18       | 0, 330  | RES, 0, 5%, 0.1 W, AEC-Q200 Grade 0, 0603, RES, 330, 5%, 0.1 W, AEC-Q200 Grade 0, 0603  | 0603L                      | CRCW06030000Z0EA  | Vishay-Dale       |
| R9, R37, R64, R65, R66, R67  | 6        | 10      | Thick Film Resistors 0402 10Ω ±1% 0.125W  | FP-560050310009_0402-MFG   | 560050310009      | Würth Electronics |
| R18, R19, R57  | 3        | 47k     | RES, 47 k, 5%, 0.063 W, AEC-Q200 Grade 0, 0402  | 0402                       | CRCW040247K0JNED  | Vishay-Dale       |
| R30, R31, R32, R39, R40, R41, R51, R52, R53, R54                                       | 10       | 10k     | RES, 10 k, 5%, 0.1 W, 0603  | 0603L                      | RC0603JR-0710KL   | Yageo             |
| R43  | 1        | 4.99k   | RES, 4.99 k, 1%, 0.1 W, 0603  | 0603L                      | CRCW06034K99FKEAC | Vishay-Dale       |
| R55, R60   | 2        | 220k    | RES, 220 k, 1%, 0.0625 W, 0402  | 0402                       | RC0402FR-07220KL  | Yageo America     |
| R56  | 1        | 240k    | RES, 240 k, 1%, 0.063 W, AEC-Q200 Grade 0, 0402   | 0402                       | CRCW0402240KFKED  | Vishay-Dale       |
| R58  | 1        | 470     | RES, 470, 5%, 0.1 W, 0603   | 0603                       | RC0603JR-07470RL  | Yageo             |
| R59  | 1        | 560     | RES, 560, 5%, 0.1 W, 0603   | 0603                       | RC0603JR-07560RL  | Yageo             |



**Table 4-1. Bill of Materials (DRV81602-Q1EVM) (continued)**

| Designator  | Quantity | Value  | Description                                       | Footprint                            | Part Number      | Manufacturer         |
|---|----------|--------|---|--------------------------------------|------------------|----------------------|
| R61   | 1        | 150k   | RES, 150 k, 1%, 0.063 W, AEC-Q200 Grade 0, 0402   | 0402                                 | CRCW0402150KFKED | Vishay-Dale          |
| R72, R75  | 2        | 27     | RES, 27, 5%, 0.063 W, AEC-Q200 Grade 0, 0402      | 0402L                                | CRCW040227R0JNED | Vishay-Dale          |
| R76   | 1        | 1.40k  | RES, 1.40 k, 1%, 0.063 W, AEC-Q200 Grade 0, 0402  | 0402L                                | CRCW04021K40FKED | Vishay-Dale          |
| R77   | 1        | 1.0Meg | RES, 1.0M, 5%, 0.063W, AEC-Q200 Grade 0, 0402     | 0402L                                | CRCW04021M00JNED | Vishay-Dale          |
| R78   | 1        | 33k    | RES, 33 k, 5%, 0.063 W, AEC-Q200 Grade 0, 0402    | 0402S                                | CRCW040233K0JNED | Vishay-Dale          |
| R90, R91, R92, R93, R94, R95, R96   | 7        | 100    | RES, 100, 1%, 0.063 W, 0402                       | 0402S                                | RC0402FR-07100RL | Yageo America        |
| R97   | 1        | 91.0k  | RES, 91.0 k, 0.1%, 0.1 W, 0603                    | 0603L                                | RG1608P-913-B-T5 | Susumu Co Ltd        |
| R98   | 1        | 10.0k  | RES, 10.0 k, 0.1%, 0.1 W, 0603                    | 0603L                                | RG1608P-103-B-T5 | Susumu Co Ltd        |
| D3  | 1        |        | LED RED CLEAR 0805 SMD                            | FP-150080SS75000-MFG                 | 150080SS75000    |                      |
| S1  | 1        |        | Tactile Switch SPST-NO Top Actuated Surface Mount | FP-430481025816_SMT_SW_6MM2_6MM2-MFG | 430481025816     | Würth Electronics    |
| SH-J1, SH-J6, SH-J7, SH-J8, SH-J9, SH-J10, SH-J11, SH-J12, SH-J19, SH-J22, SH-J23, SH-J24, SH-J25, SH-J26, SH-J27, SH-J28, SH-J29, SH-J31, SH-J32, SH-J33, SH-J34, SH-J35, SH-J36 | 23       |        | Shunt, 2.54mm, Gold, Black                        | Würth_60900213421                    | 60900213421      | Würth Elektronik     |
| TP1, TP35   | 2        |        | Test Point, Multipurpose, Black, TH               | Keystone5011                         | 5011             | Keystone Electronics |

**Table 4-1. Bill of Materials (DRV81602-Q1EVM) (continued)**

| Designator  | Quantity | Value | Description   | Footprint       | Part Number                           | Manufacturer                      |
|---|----------|-------|---|-----------------|---------------------------------------|-----------------------------------|
| TP2, TP4, TP6, TP7,<br>TP8, TP9, TP10,<br>TP11, TP12, TP13,<br>TP14, TP15, TP16,<br>TP17, TP18, TP40,<br>TP41, VM | 18       |       | Test Point, Multipurpose, Red, TH   | Keystone5010    | 5010                                  | Keystone Electronics,<br>Keystone |
| TP3, TP5  | 2        |       | Test Point, Multipurpose, White, TH   | Keystone5012    | 5012                                  | Keystone Electronics              |
| TP20, TP21, TP22,<br>TP23, TP24, TP25,<br>TP26, TP27, TP28  | 9        |       | Test Point, Miniature, White, TH  | Keystone5002    | 5002                                  | Keystone Electronics              |
| TP36  | 1        |       | Test Point, Miniature, Orange, TH   | Keystone5003    | 5003                                  | Keystone Electronics              |
| TP37, TP38, TP39  | 3        |       | 1mm Uninsulated Shorting Plug, 10.16mm<br>spacing, TH   | Harwin_D3082-05 | D3082-05                              | Harwin                            |
| U1  | 1        |       | 20MHz Mixed Signal Microcontroller with 256<br>KB Flash, 18432 B SRAM and 74 GPIOs, -40<br>to 85 degC, 100-pin QFP (PZ), Green (RoHS &<br>no Sb/Br) | PZT0100A_N      | MSP430F5338IPZ                        | Texas Instruments                 |
| U2  | 1        |       | 16-Bit Ultra-Low-Power Microcontroller, 128KB<br>Flash, 8KB RAM, USB, 12Bit ADC, 2 USCIs,<br>32Bit HW MPY, RGC0064B (VQFN-64)                       | RGC0064B        | MSP430F5528IRGCT                      | Texas Instruments                 |
| U3  | 1        |       | 500mA, Adjustable, Low Quiescent Current,<br>Low-Noise, High-PSRR, Single-Output LDO<br>Regulator, DRB0008A (VSON-8)                                | DRB0008A        | TPS73533DRBR                          | Texas Instruments                 |
| U4  | 1        |       | Ultra-Low Quiescent Current Voltage<br>Regulator, 8-pin Narrow SOIC, Pb-Free  | D0008A_N        | LM9036M-3.3/NOPB                      | Texas Instruments                 |
| U5  | 1        |       | 8-channel Configurable Low-side and High-<br>side Driver for Automotive Relay, Lighting and<br>Motor Control  | PWP0024T-MFG    | DRV81602HTSSOP                        | Texas Instruments                 |
| U6  | 1        |       | Low-Capacitance 2-Channel +/-15kV ESD<br>Protection Array for High-Speed Data<br>Interfaces, DRY0006A (USON-6)                                      | DRY0006A        | TPD2E001DRYR                          | Texas Instruments                 |
| Y1  | 1        |       | Oscillator, 4MHz, 700ppm, 39pF, SMD   | MuRata_CSTNR    | CSTNR4M00GH5L000R0                    | MuRata                            |
| Y2  | 1        |       | Crystal, 32.768kHz, 12.5pF, SMD   | XTAL_MS3V-T1R   | MS3V-T1R 32.768KHZ<br>+/-20PPM 12.5PF | Micro Crystal AG                  |

## 5 Additional Information

### 5.1 Known Hardware or Software Issues

If the EVM does not connect to the GUI, then read through this FAQ: [\[FAQ\] Why won't my Motor Driver EVM connect to the GUI?](#)

On Rev A of the EVMs, the 10uF VM capacitor (C2 on DRV81602-Q1) is only rated for 25V, though the motor drivers are rated for 40V. Applying more than 24V to the EVM is likely to cause this capacitor to rapidly disassemble. This capacitor can be removed from the EVM without affecting the functionality of the device.

On Rev A of the EVMs, the input fuse F1 is rated for 32V. If >32V is applied this fuse can blow even under nominal current conditions. Connect VM to a VM test point after the fuse to bypass this fuse.

### 5.2 Trademarks

All trademarks are the property of their respective owners.

## STANDARD TERMS FOR EVALUATION MODULES

1. *Delivery:* TI delivers TI evaluation boards, kits, or modules, including any accompanying demonstration software, components, and/or documentation which may be provided together or separately (collectively, an "EVM" or "EVMs") to the User ("User") in accordance with the terms set forth herein. User's acceptance of the EVM is expressly subject to the following terms.
  - 1.1 EVMs are intended solely for product or software developers for use in a research and development setting to facilitate feasibility evaluation, experimentation, or scientific analysis of TI semiconductors products. EVMs have no direct function and are not finished products. EVMs shall not be directly or indirectly assembled as a part or subassembly in any finished product. For clarification, any software or software tools provided with the EVM ("Software") shall not be subject to the terms and conditions set forth herein but rather shall be subject to the applicable terms that accompany such Software
  - 1.2 EVMs are not intended for consumer or household use. EVMs may not be sold, sublicensed, leased, rented, loaned, assigned, or otherwise distributed for commercial purposes by Users, in whole or in part, or used in any finished product or production system.
2. *Limited Warranty and Related Remedies/Disclaimers:*
  - 2.1 These terms do not apply to Software. The warranty, if any, for Software is covered in the applicable Software License Agreement.
  - 2.2 TI warrants that the TI EVM will conform to TI's published specifications for ninety (90) days after the date TI delivers such EVM to User. Notwithstanding the foregoing, TI shall not be liable for a nonconforming EVM if (a) the nonconformity was caused by neglect, misuse or mistreatment by an entity other than TI, including improper installation or testing, or for any EVMs that have been altered or modified in any way by an entity other than TI, (b) the nonconformity resulted from User's design, specifications or instructions for such EVMs or improper system design, or (c) User has not paid on time. Testing and other quality control techniques are used to the extent TI deems necessary. TI does not test all parameters of each EVM. User's claims against TI under this Section 2 are void if User fails to notify TI of any apparent defects in the EVMs within ten (10) business days after delivery, or of any hidden defects with ten (10) business days after the defect has been detected.
  - 2.3 TI's sole liability shall be at its option to repair or replace EVMs that fail to conform to the warranty set forth above, or credit User's account for such EVM. TI's liability under this warranty shall be limited to EVMs that are returned during the warranty period to the address designated by TI and that are determined by TI not to conform to such warranty. If TI elects to repair or replace such EVM, TI shall have a reasonable time to repair such EVM or provide replacements. Repaired EVMs shall be warranted for the remainder of the original warranty period. Replaced EVMs shall be warranted for a new full ninety (90) day warranty period.

### **WARNING**

**Evaluation Kits are intended solely for use by technically qualified, professional electronics experts who are familiar with the dangers and application risks associated with handling electrical mechanical components, systems, and subsystems.**

**User shall operate the Evaluation Kit within TI's recommended guidelines and any applicable legal or environmental requirements as well as reasonable and customary safeguards. Failure to set up and/or operate the Evaluation Kit within TI's recommended guidelines may result in personal injury or death or property damage. Proper set up entails following TI's instructions for electrical ratings of interface circuits such as input, output and electrical loads.**

**NOTE:**

**EXPOSURE TO ELECTROSTATIC DISCHARGE (ESD) MAY CAUSE DEGRADATION OR FAILURE OF THE EVALUATION KIT; TI RECOMMENDS STORAGE OF THE EVALUATION KIT IN A PROTECTIVE ESD BAG.**

### 3 Regulatory Notices:

#### 3.1 United States

##### 3.1.1 Notice applicable to EVMs not FCC-Approved:

**FCC NOTICE:** This kit is designed to allow product developers to evaluate electronic components, circuitry, or software associated with the kit to determine whether to incorporate such items in a finished product and software developers to write software applications for use with the end product. This kit is not a finished product and when assembled may not be resold or otherwise marketed unless all required FCC equipment authorizations are first obtained. Operation is subject to the condition that this product not cause harmful interference to licensed radio stations and that this product accept harmful interference. Unless the assembled kit is designed to operate under part 15, part 18 or part 95 of this chapter, the operator of the kit must operate under the authority of an FCC license holder or must secure an experimental authorization under part 5 of this chapter.

##### 3.1.2 For EVMs annotated as FCC – FEDERAL COMMUNICATIONS COMMISSION Part 15 Compliant:

#### **CAUTION**

This device complies with part 15 of the FCC Rules. Operation is subject to the following two conditions: (1) This device may not cause harmful interference, and (2) this device must accept any interference received, including interference that may cause undesired operation.

Changes or modifications not expressly approved by the party responsible for compliance could void the user's authority to operate the equipment.

#### **FCC Interference Statement for Class A EVM devices**

*NOTE: This equipment has been tested and found to comply with the limits for a Class A digital device, pursuant to part 15 of the FCC Rules. These limits are designed to provide reasonable protection against harmful interference when the equipment is operated in a commercial environment. This equipment generates, uses, and can radiate radio frequency energy and, if not installed and used in accordance with the instruction manual, may cause harmful interference to radio communications. Operation of this equipment in a residential area is likely to cause harmful interference in which case the user will be required to correct the interference at his own expense.*

#### **FCC Interference Statement for Class B EVM devices**

*NOTE: This equipment has been tested and found to comply with the limits for a Class B digital device, pursuant to part 15 of the FCC Rules. These limits are designed to provide reasonable protection against harmful interference in a residential installation. This equipment generates, uses and can radiate radio frequency energy and, if not installed and used in accordance with the instructions, may cause harmful interference to radio communications. However, there is no guarantee that interference will not occur in a particular installation. If this equipment does cause harmful interference to radio or television reception, which can be determined by turning the equipment off and on, the user is encouraged to try to correct the interference by one or more of the following measures:*

- Reorient or relocate the receiving antenna.
- Increase the separation between the equipment and receiver.
- Connect the equipment into an outlet on a circuit different from that to which the receiver is connected.
- Consult the dealer or an experienced radio/TV technician for help.

#### 3.2 Canada

##### 3.2.1 For EVMs issued with an Industry Canada Certificate of Conformance to RSS-210 or RSS-247

#### **Concerning EVMs Including Radio Transmitters:**

This device complies with Industry Canada license-exempt RSSs. Operation is subject to the following two conditions:

(1) this device may not cause interference, and (2) this device must accept any interference, including interference that may cause undesired operation of the device.

#### **Concernant les EVMs avec appareils radio:**

Le présent appareil est conforme aux CNR d'Industrie Canada applicables aux appareils radio exempts de licence. L'exploitation est autorisée aux deux conditions suivantes: (1) l'appareil ne doit pas produire de brouillage, et (2) l'utilisateur de l'appareil doit accepter tout brouillage radioélectrique subi, même si le brouillage est susceptible d'en compromettre le fonctionnement.

#### **Concerning EVMs Including Detachable Antennas:**

Under Industry Canada regulations, this radio transmitter may only operate using an antenna of a type and maximum (or lesser) gain approved for the transmitter by Industry Canada. To reduce potential radio interference to other users, the antenna type and its gain should be so chosen that the equivalent isotropically radiated power (e.i.r.p.) is not more than that necessary for successful communication. This radio transmitter has been approved by Industry Canada to operate with the antenna types listed in the user guide with the maximum permissible gain and required antenna impedance for each antenna type indicated. Antenna types not included in this list, having a gain greater than the maximum gain indicated for that type, are strictly prohibited for use with this device.

### Concernant les EVMs avec antennes détachables

Conformément à la réglementation d'Industrie Canada, le présent émetteur radio peut fonctionner avec une antenne d'un type et d'un gain maximal (ou inférieur) approuvé pour l'émetteur par Industrie Canada. Dans le but de réduire les risques de brouillage radioélectrique à l'intention des autres utilisateurs, il faut choisir le type d'antenne et son gain de sorte que la puissance isotrope rayonnée équivalente (p.i.r.e.) ne dépasse pas l'intensité nécessaire à l'établissement d'une communication satisfaisante. Le présent émetteur radio a été approuvé par Industrie Canada pour fonctionner avec les types d'antenne énumérés dans le manuel d'usage et ayant un gain admissible maximal et l'impédance requise pour chaque type d'antenne. Les types d'antenne non inclus dans cette liste, ou dont le gain est supérieur au gain maximal indiqué, sont strictement interdits pour l'exploitation de l'émetteur.

#### 3.3 Japan

3.3.1 *Notice for EVMs delivered in Japan:* Please see [http://www.tij.co.jp/lstds/ti\\_ja/general/eStore/notice\\_01.page](http://www.tij.co.jp/lstds/ti_ja/general/eStore/notice_01.page) 日本国内に輸入される評価用キット、ボードについては、次のところをご覧ください。

<https://www.ti.com/ja-jp/legal/notice-for-evaluation-kits-delivered-in-japan.html>

3.3.2 *Notice for Users of EVMs Considered "Radio Frequency Products" in Japan:* EVMs entering Japan may not be certified by TI as conforming to Technical Regulations of Radio Law of Japan.

If User uses EVMs in Japan, not certified to Technical Regulations of Radio Law of Japan, User is required to follow the instructions set forth by Radio Law of Japan, which includes, but is not limited to, the instructions below with respect to EVMs (which for the avoidance of doubt are stated strictly for convenience and should be verified by User):

1. Use EVMs in a shielded room or any other test facility as defined in the notification #173 issued by Ministry of Internal Affairs and Communications on March 28, 2006, based on Sub-section 1.1 of Article 6 of the Ministry's Rule for Enforcement of Radio Law of Japan,
2. Use EVMs only after User obtains the license of Test Radio Station as provided in Radio Law of Japan with respect to EVMs, or
3. Use of EVMs only after User obtains the Technical Regulations Conformity Certification as provided in Radio Law of Japan with respect to EVMs. Also, do not transfer EVMs, unless User gives the same notice above to the transferee. Please note that if User does not follow the instructions above, User will be subject to penalties of Radio Law of Japan.

【無線電波を送信する製品の開発キットをお使いになる際の注意事項】 開発キットの中には技術基準適合証明を受けていないものがあります。技術適合証明を受けていないものご使用に際しては、電波法遵守のため、以下のいずれかの措置を取っていただく必要がありますのでご注意ください。

1. 電波法施行規則第6条第1項第1号に基づく平成18年3月28日総務省告示第173号で定められた電波暗室等の試験設備でご使用いただく。
2. 実験局の免許を取得後ご使用いただく。
3. 技術基準適合証明を取得後ご使用いただく。

なお、本製品は、上記の「ご使用にあたっての注意」を譲渡先、移転先に通知しない限り、譲渡、移転できないものとします。

上記を遵守頂けない場合は、電波法の罰則が適用される可能性があることをご留意ください。日本テキサス・イ

ンスツルメンツ株式会社

東京都新宿区西新宿 6 丁目 2 4 番 1 号

西新宿三井ビル

3.3.3 *Notice for EVMs for Power Line Communication:* Please see [http://www.tij.co.jp/lstds/ti\\_ja/general/eStore/notice\\_02.page](http://www.tij.co.jp/lstds/ti_ja/general/eStore/notice_02.page)

電力線搬送波通信についての開発キットをお使いになる際の注意事項については、次のところをご覧ください。 <https://www.ti.com/ja-jp/legal/notice-for-evaluation-kits-for-power-line-communication.html>

#### 3.4 European Union

3.4.1 *For EVMs subject to EU Directive 2014/30/EU (Electromagnetic Compatibility Directive):*

This is a class A product intended for use in environments other than domestic environments that are connected to a low-voltage power-supply network that supplies buildings used for domestic purposes. In a domestic environment this product may cause radio interference in which case the user may be required to take adequate measures.

- 
- 4 *EVM Use Restrictions and Warnings:*
    - 4.1 EVMS ARE NOT FOR USE IN FUNCTIONAL SAFETY AND/OR SAFETY CRITICAL EVALUATIONS, INCLUDING BUT NOT LIMITED TO EVALUATIONS OF LIFE SUPPORT APPLICATIONS.
    - 4.2 User must read and apply the user guide and other available documentation provided by TI regarding the EVM prior to handling or using the EVM, including without limitation any warning or restriction notices. The notices contain important safety information related to, for example, temperatures and voltages.
    - 4.3 *Safety-Related Warnings and Restrictions:*
      - 4.3.1 User shall operate the EVM within TI's recommended specifications and environmental considerations stated in the user guide, other available documentation provided by TI, and any other applicable requirements and employ reasonable and customary safeguards. Exceeding the specified performance ratings and specifications (including but not limited to input and output voltage, current, power, and environmental ranges) for the EVM may cause personal injury or death, or property damage. If there are questions concerning performance ratings and specifications, User should contact a TI field representative prior to connecting interface electronics including input power and intended loads. Any loads applied outside of the specified output range may also result in unintended and/or inaccurate operation and/or possible permanent damage to the EVM and/or interface electronics. Please consult the EVM user guide prior to connecting any load to the EVM output. If there is uncertainty as to the load specification, please contact a TI field representative. During normal operation, even with the inputs and outputs kept within the specified allowable ranges, some circuit components may have elevated case temperatures. These components include but are not limited to linear regulators, switching transistors, pass transistors, current sense resistors, and heat sinks, which can be identified using the information in the associated documentation. When working with the EVM, please be aware that the EVM may become very warm.
      - 4.3.2 EVMs are intended solely for use by technically qualified, professional electronics experts who are familiar with the dangers and application risks associated with handling electrical mechanical components, systems, and subsystems. User assumes all responsibility and liability for proper and safe handling and use of the EVM by User or its employees, affiliates, contractors or designees. User assumes all responsibility and liability to ensure that any interfaces (electronic and/or mechanical) between the EVM and any human body are designed with suitable isolation and means to safely limit accessible leakage currents to minimize the risk of electrical shock hazard. User assumes all responsibility and liability for any improper or unsafe handling or use of the EVM by User or its employees, affiliates, contractors or designees.
    - 4.4 User assumes all responsibility and liability to determine whether the EVM is subject to any applicable international, federal, state, or local laws and regulations related to User's handling and use of the EVM and, if applicable, User assumes all responsibility and liability for compliance in all respects with such laws and regulations. User assumes all responsibility and liability for proper disposal and recycling of the EVM consistent with all applicable international, federal, state, and local requirements.
  5. *Accuracy of Information:* To the extent TI provides information on the availability and function of EVMs, TI attempts to be as accurate as possible. However, TI does not warrant the accuracy of EVM descriptions, EVM availability or other information on its websites as accurate, complete, reliable, current, or error-free.
  6. *Disclaimers:*
    - 6.1 EXCEPT AS SET FORTH ABOVE, EVMS AND ANY MATERIALS PROVIDED WITH THE EVM (INCLUDING, BUT NOT LIMITED TO, REFERENCE DESIGNS AND THE DESIGN OF THE EVM ITSELF) ARE PROVIDED "AS IS" AND "WITH ALL FAULTS." TI DISCLAIMS ALL OTHER WARRANTIES, EXPRESS OR IMPLIED, REGARDING SUCH ITEMS, INCLUDING BUT NOT LIMITED TO ANY EPIDEMIC FAILURE WARRANTY OR IMPLIED WARRANTIES OF MERCHANTABILITY OR FITNESS FOR A PARTICULAR PURPOSE OR NON-INFRINGEMENT OF ANY THIRD PARTY PATENTS, COPYRIGHTS, TRADE SECRETS OR OTHER INTELLECTUAL PROPERTY RIGHTS.
    - 6.2 EXCEPT FOR THE LIMITED RIGHT TO USE THE EVM SET FORTH HEREIN, NOTHING IN THESE TERMS SHALL BE CONSTRUED AS GRANTING OR CONFERRING ANY RIGHTS BY LICENSE, PATENT, OR ANY OTHER INDUSTRIAL OR INTELLECTUAL PROPERTY RIGHT OF TI, ITS SUPPLIERS/LICENSORS OR ANY OTHER THIRD PARTY, TO USE THE EVM IN ANY FINISHED END-USER OR READY-TO-USE FINAL PRODUCT, OR FOR ANY INVENTION, DISCOVERY OR IMPROVEMENT, REGARDLESS OF WHEN MADE, CONCEIVED OR ACQUIRED.
  7. *USER'S INDEMNITY OBLIGATIONS AND REPRESENTATIONS.* USER WILL DEFEND, INDEMNIFY AND HOLD TI, ITS LICENSORS AND THEIR REPRESENTATIVES HARMLESS FROM AND AGAINST ANY AND ALL CLAIMS, DAMAGES, LOSSES, EXPENSES, COSTS AND LIABILITIES (COLLECTIVELY, "CLAIMS") ARISING OUT OF OR IN CONNECTION WITH ANY HANDLING OR USE OF THE EVM THAT IS NOT IN ACCORDANCE WITH THESE TERMS. THIS OBLIGATION SHALL APPLY WHETHER CLAIMS ARISE UNDER STATUTE, REGULATION, OR THE LAW OF TORT, CONTRACT OR ANY OTHER LEGAL THEORY, AND EVEN IF THE EVM FAILS TO PERFORM AS DESCRIBED OR EXPECTED.
-

8. *Limitations on Damages and Liability:*

8.1 *General Limitations.* IN NO EVENT SHALL TI BE LIABLE FOR ANY SPECIAL, COLLATERAL, INDIRECT, PUNITIVE, INCIDENTAL, CONSEQUENTIAL, OR EXEMPLARY DAMAGES IN CONNECTION WITH OR ARISING OUT OF THESE TERMS OR THE USE OF THE EVMS , REGARDLESS OF WHETHER TI HAS BEEN ADVISED OF THE POSSIBILITY OF SUCH DAMAGES. EXCLUDED DAMAGES INCLUDE, BUT ARE NOT LIMITED TO, COST OF REMOVAL OR REINSTALLATION, ANCILLARY COSTS TO THE PROCUREMENT OF SUBSTITUTE GOODS OR SERVICES, RETESTING, OUTSIDE COMPUTER TIME, LABOR COSTS, LOSS OF GOODWILL, LOSS OF PROFITS, LOSS OF SAVINGS, LOSS OF USE, LOSS OF DATA, OR BUSINESS INTERRUPTION. NO CLAIM, SUIT OR ACTION SHALL BE BROUGHT AGAINST TI MORE THAN TWELVE (12) MONTHS AFTER THE EVENT THAT GAVE RISE TO THE CAUSE OF ACTION HAS OCCURRED.

8.2 *Specific Limitations.* IN NO EVENT SHALL TI'S AGGREGATE LIABILITY FROM ANY USE OF AN EVM PROVIDED HEREUNDER, INCLUDING FROM ANY WARRANTY, INDEMNITY OR OTHER OBLIGATION ARISING OUT OF OR IN CONNECTION WITH THESE TERMS, , EXCEED THE TOTAL AMOUNT PAID TO TI BY USER FOR THE PARTICULAR EVM(S) AT ISSUE DURING THE PRIOR TWELVE (12) MONTHS WITH RESPECT TO WHICH LOSSES OR DAMAGES ARE CLAIMED. THE EXISTENCE OF MORE THAN ONE CLAIM SHALL NOT ENLARGE OR EXTEND THIS LIMIT.

9. *Return Policy.* Except as otherwise provided, TI does not offer any refunds, returns, or exchanges. Furthermore, no return of EVM(s) will be accepted if the package has been opened and no return of the EVM(s) will be accepted if they are damaged or otherwise not in a resalable condition. If User feels it has been incorrectly charged for the EVM(s) it ordered or that delivery violates the applicable order, User should contact TI. All refunds will be made in full within thirty (30) working days from the return of the components(s), excluding any postage or packaging costs.

10. *Governing Law:* These terms and conditions shall be governed by and interpreted in accordance with the laws of the State of Texas, without reference to conflict-of-laws principles. User agrees that non-exclusive jurisdiction for any dispute arising out of or relating to these terms and conditions lies within courts located in the State of Texas and consents to venue in Dallas County, Texas. Notwithstanding the foregoing, any judgment may be enforced in any United States or foreign court, and TI may seek injunctive relief in any United States or foreign court.

Mailing Address: Texas Instruments, Post Office Box 655303, Dallas, Texas 75265  
Copyright © 2023, Texas Instruments Incorporated



## IMPORTANT NOTICE AND DISCLAIMER

TI PROVIDES TECHNICAL AND RELIABILITY DATA (INCLUDING DATA SHEETS), DESIGN RESOURCES (INCLUDING REFERENCE DESIGNS), APPLICATION OR OTHER DESIGN ADVICE, WEB TOOLS, SAFETY INFORMATION, AND OTHER RESOURCES "AS IS" AND WITH ALL FAULTS, AND DISCLAIMS ALL WARRANTIES, EXPRESS AND IMPLIED, INCLUDING WITHOUT LIMITATION ANY IMPLIED WARRANTIES OF MERCHANTABILITY, FITNESS FOR A PARTICULAR PURPOSE OR NON-INFRINGEMENT OF THIRD PARTY INTELLECTUAL PROPERTY RIGHTS.

These resources are intended for skilled developers designing with TI products. You are solely responsible for (1) selecting the appropriate TI products for your application, (2) designing, validating and testing your application, and (3) ensuring your application meets applicable standards, and any other safety, security, regulatory or other requirements.

These resources are subject to change without notice. TI grants you permission to use these resources only for development of an application that uses the TI products described in the resource. Other reproduction and display of these resources is prohibited. No license is granted to any other TI intellectual property right or to any third party intellectual property right. TI disclaims responsibility for, and you will fully indemnify TI and its representatives against, any claims, damages, costs, losses, and liabilities arising out of your use of these resources.

TI's products are provided subject to [TI's Terms of Sale](#) or other applicable terms available either on [ti.com](https://www.ti.com) or provided in conjunction with such TI products. TI's provision of these resources does not expand or otherwise alter TI's applicable warranties or warranty disclaimers for TI products.

TI objects to and rejects any additional or different terms you may have proposed.

Mailing Address: Texas Instruments, Post Office Box 655303, Dallas, Texas 75265  
Copyright © 2024, Texas Instruments Incorporated