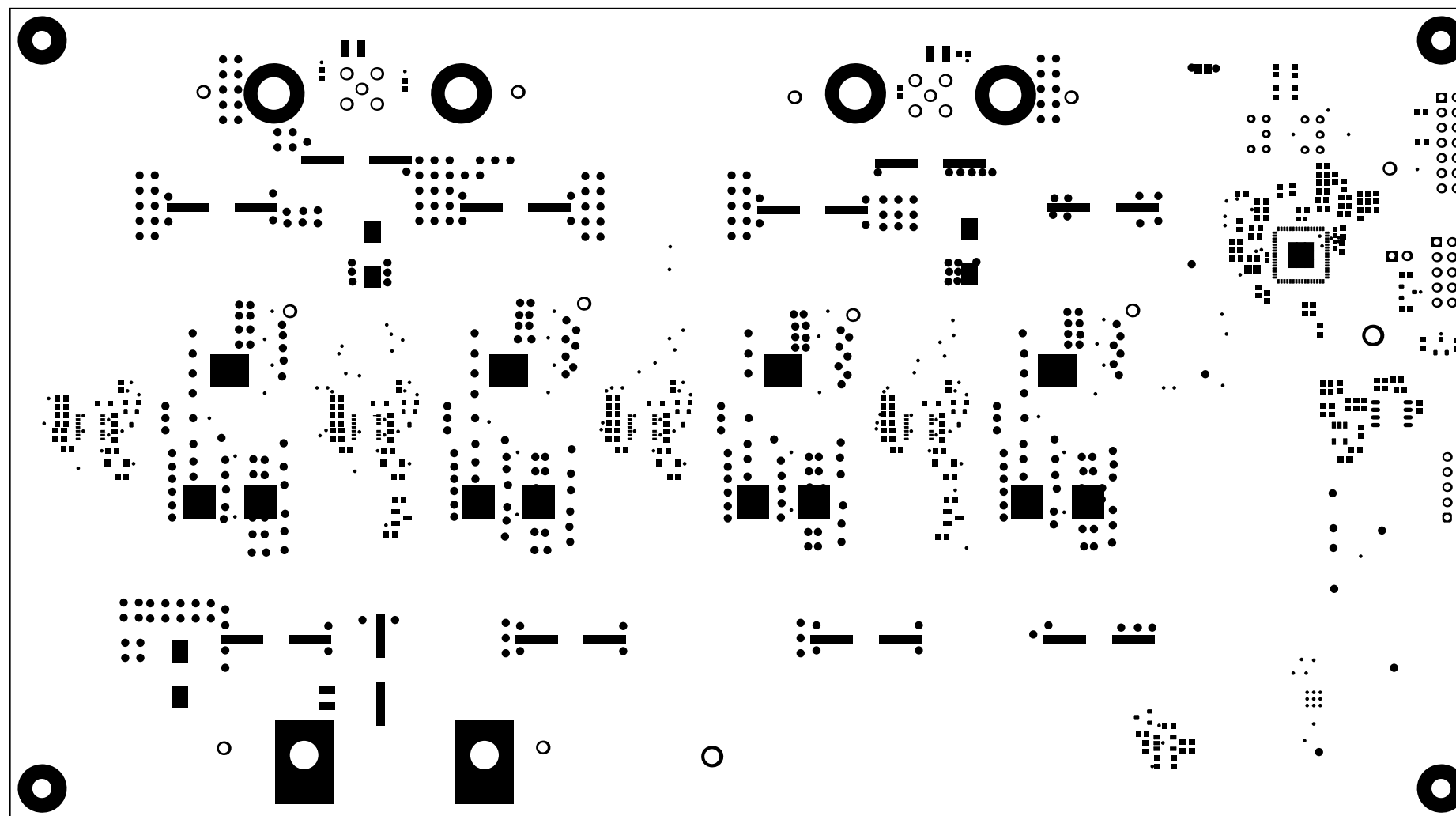
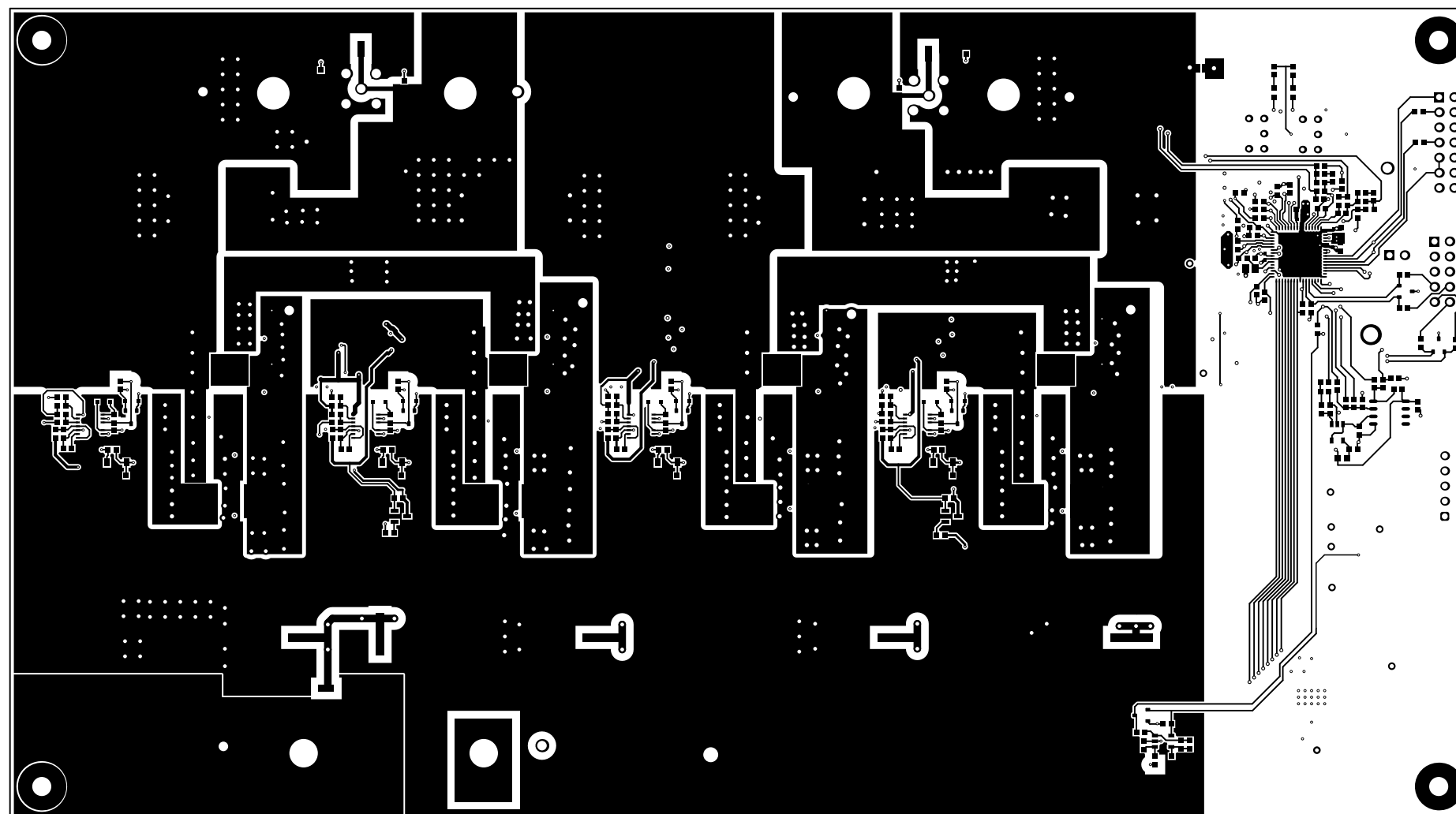


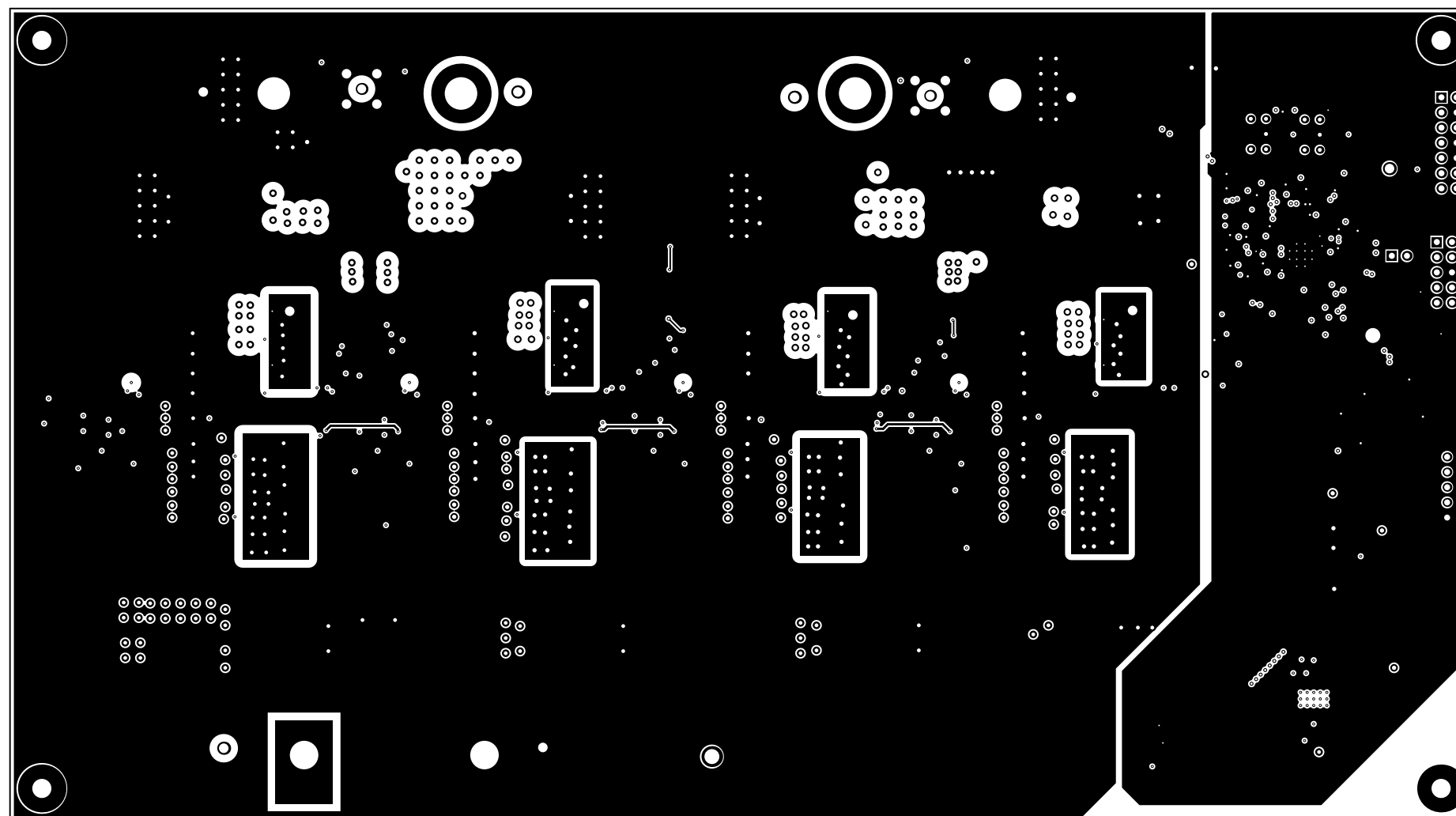
ALL ARTWORK VIEWED FROM TOP SIDE	BOARD #: PMP20587	REV: D	SUN REV: Not In VersionControl
LAYER NAME = Top Overlay	TID #: PMP20587		
PLOT NAME = Top Overlay	GENERATED : 7/1/2020 1:19:55 AM		TEXAS INSTRUMENTS



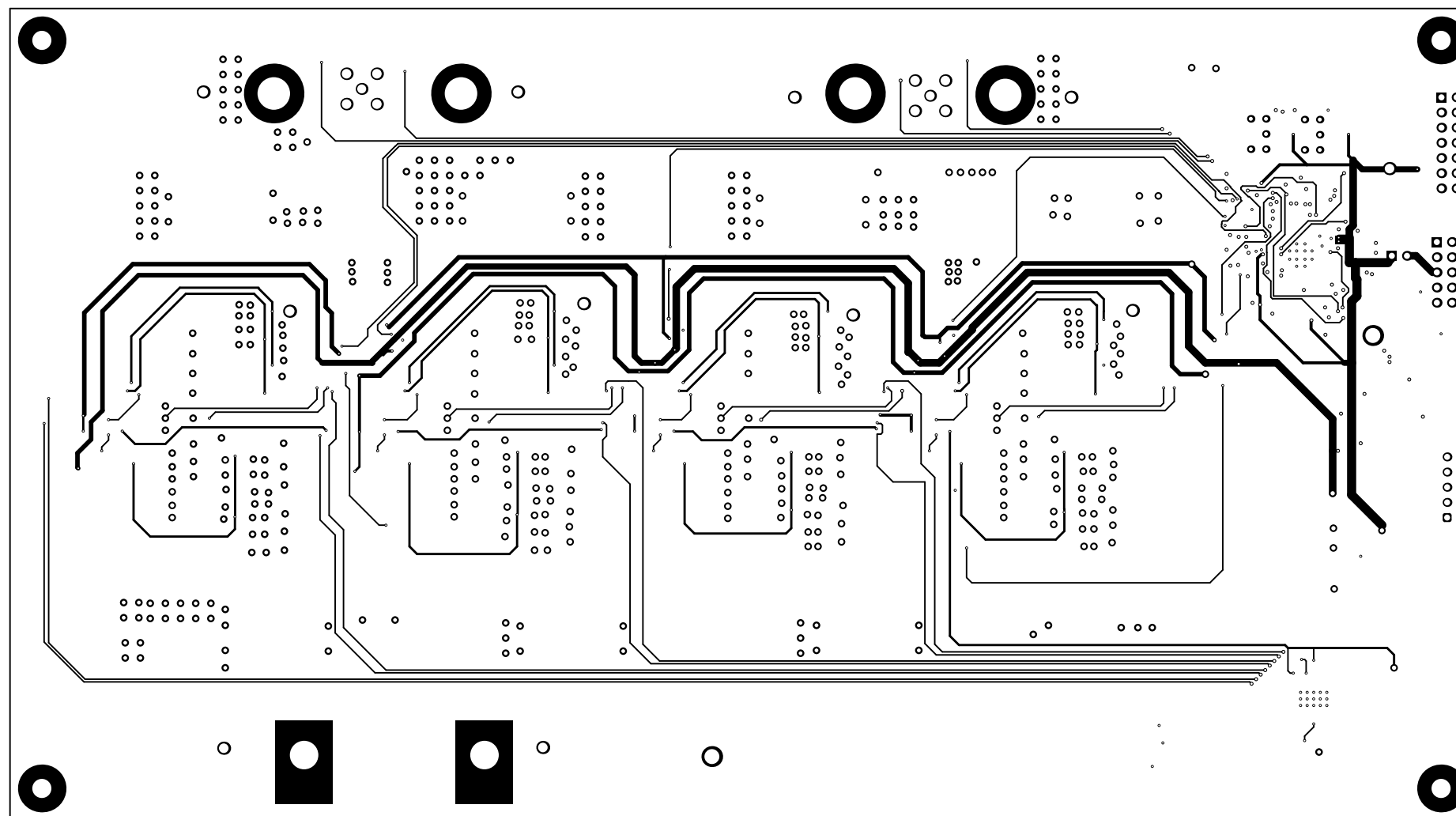
ALL ARTWORK VIEWED FROM TOP SIDE	BOARD #: PMP20587	REV: D	SUN REV: Not In VersionControl
LAYER NAME = Top Solder	TID #: PMP20587		
PLOT NAME = Top Solder Mask	GENERATED : 7/1/2020	1:19:55 AM	TEXAS INSTRUMENTS



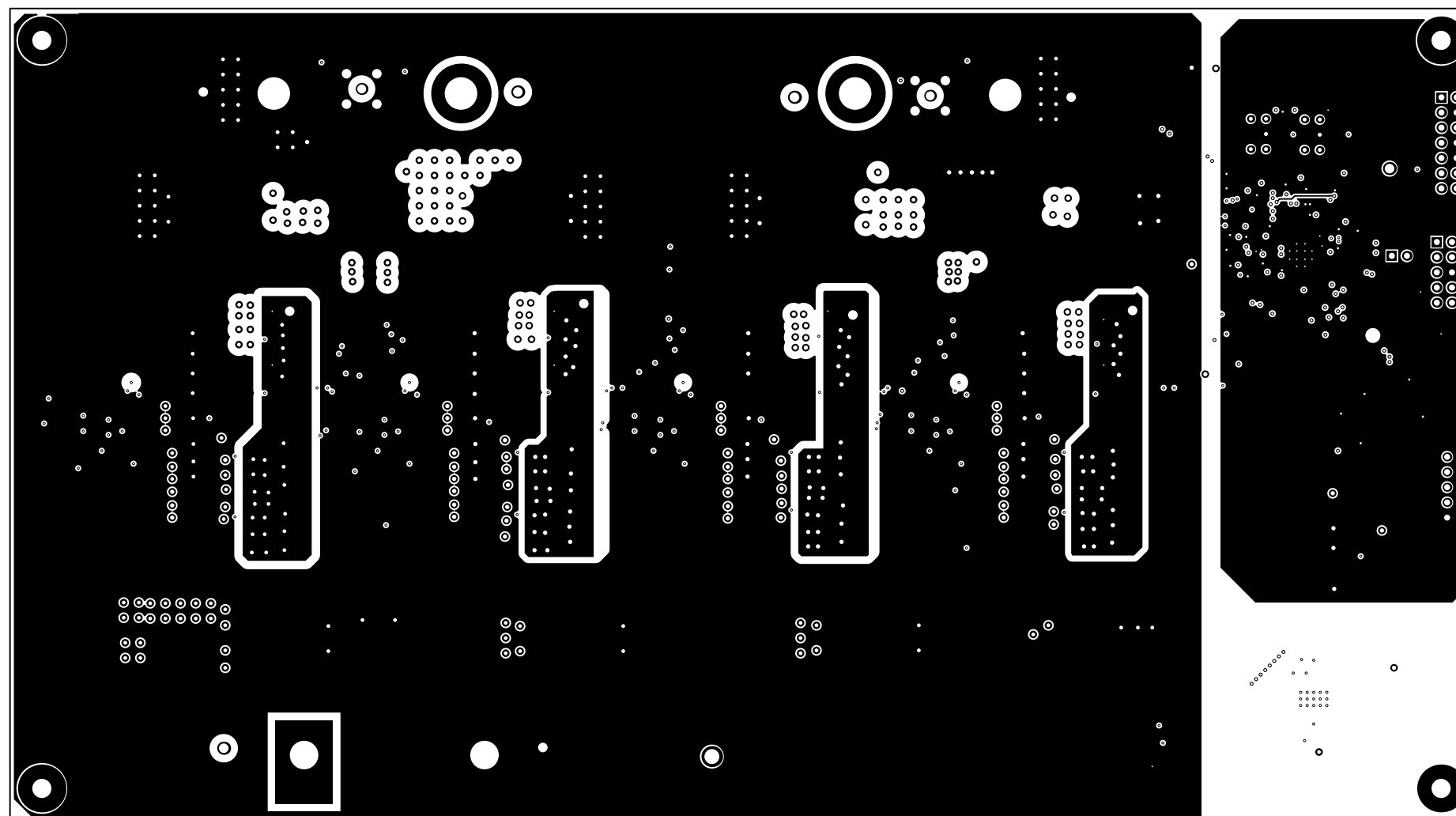
ALL ARTWORK VIEWED FROM TOP SIDE	BOARD #: PMP20587	REV: D	SUN REV: Not In VersionControl
LAYER NAME = Top Layer	TID #: PMP20587		
PLOT NAME = Top Layer	GENERATED : 7/1/2020	1:19:55 AM	TEXAS INSTRUMENTS



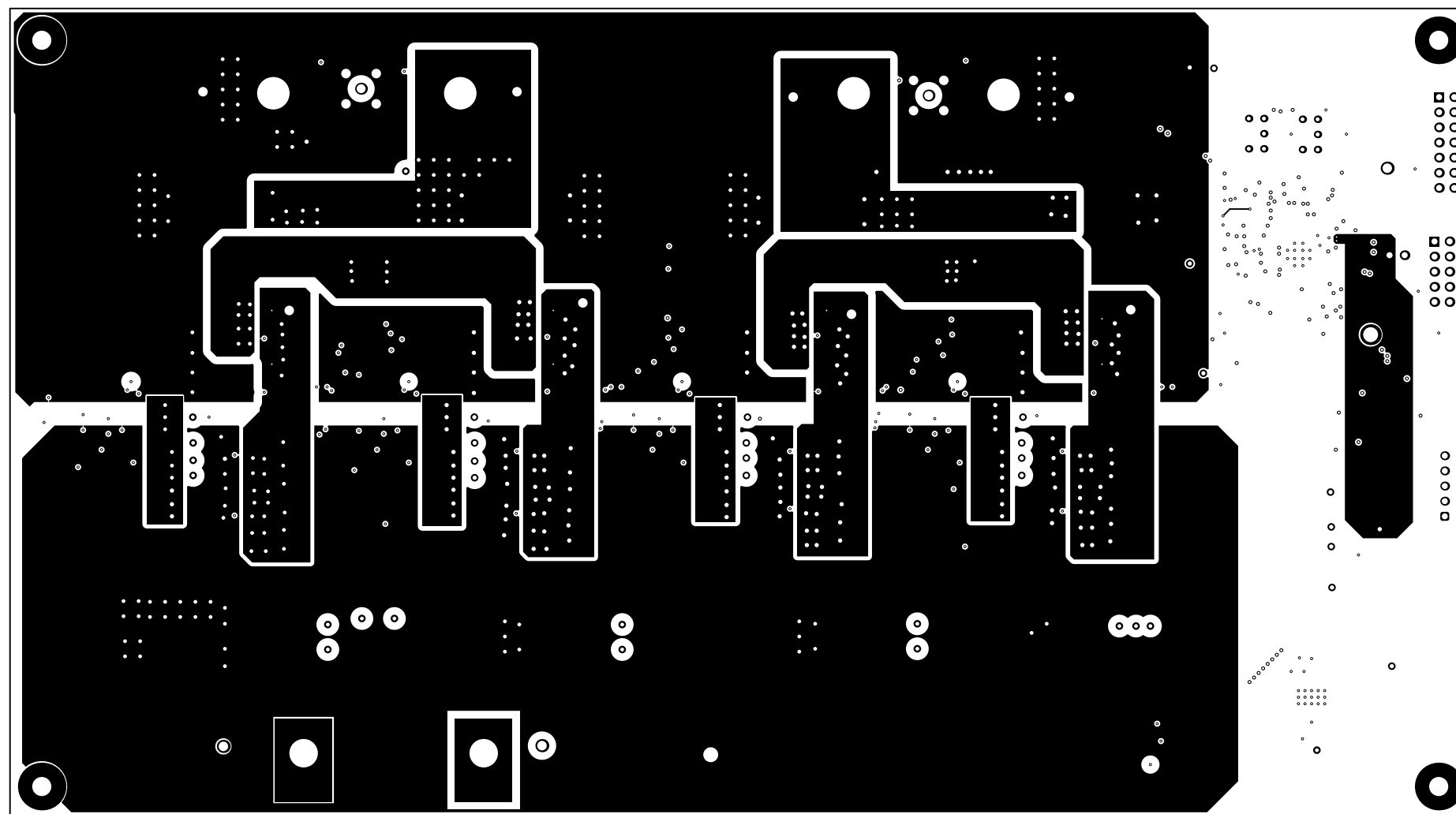
ALL ARTWORK VIEWED FROM TOP SIDE	BOARD #: PMP20587	REV: D	SUN REV: Not In VersionControl
LAYER NAME =	TID #: PMP20587		
PLOT NAME = Signal Layer 1	GENERATED : 7/1/2020	1:19:56 AM	TEXAS INSTRUMENTS



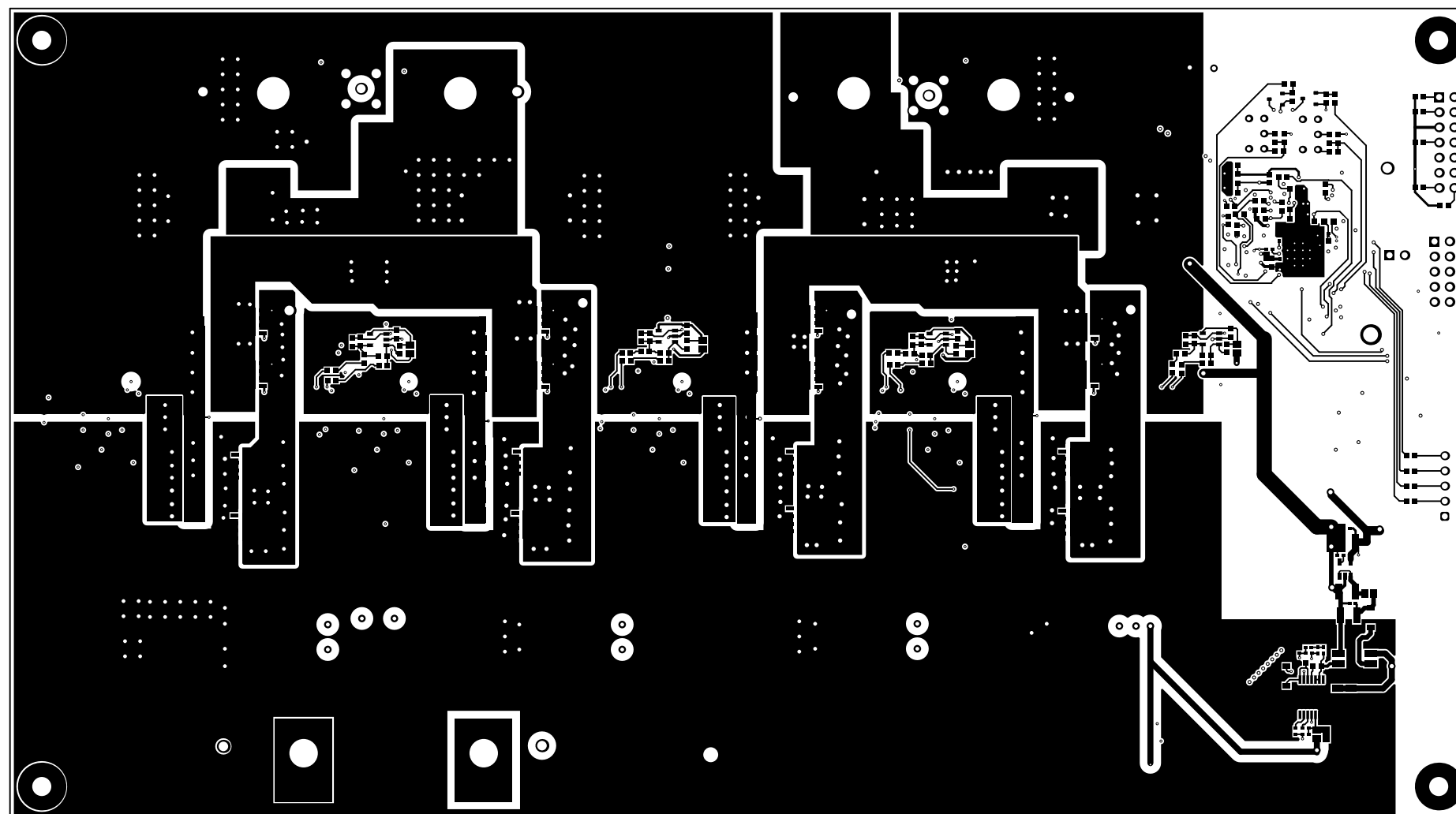
ALL ARTWORK VIEWED FROM TOP SIDE	BOARD #: PMP20587	REV: D	SUN REV: Not In VersionControl
LAYER NAME =	TID #: PMP20587		
PLOT NAME = Signal Layer 2	GENERATED : 7/1/2020	1:19:56 AM	TEXAS INSTRUMENTS



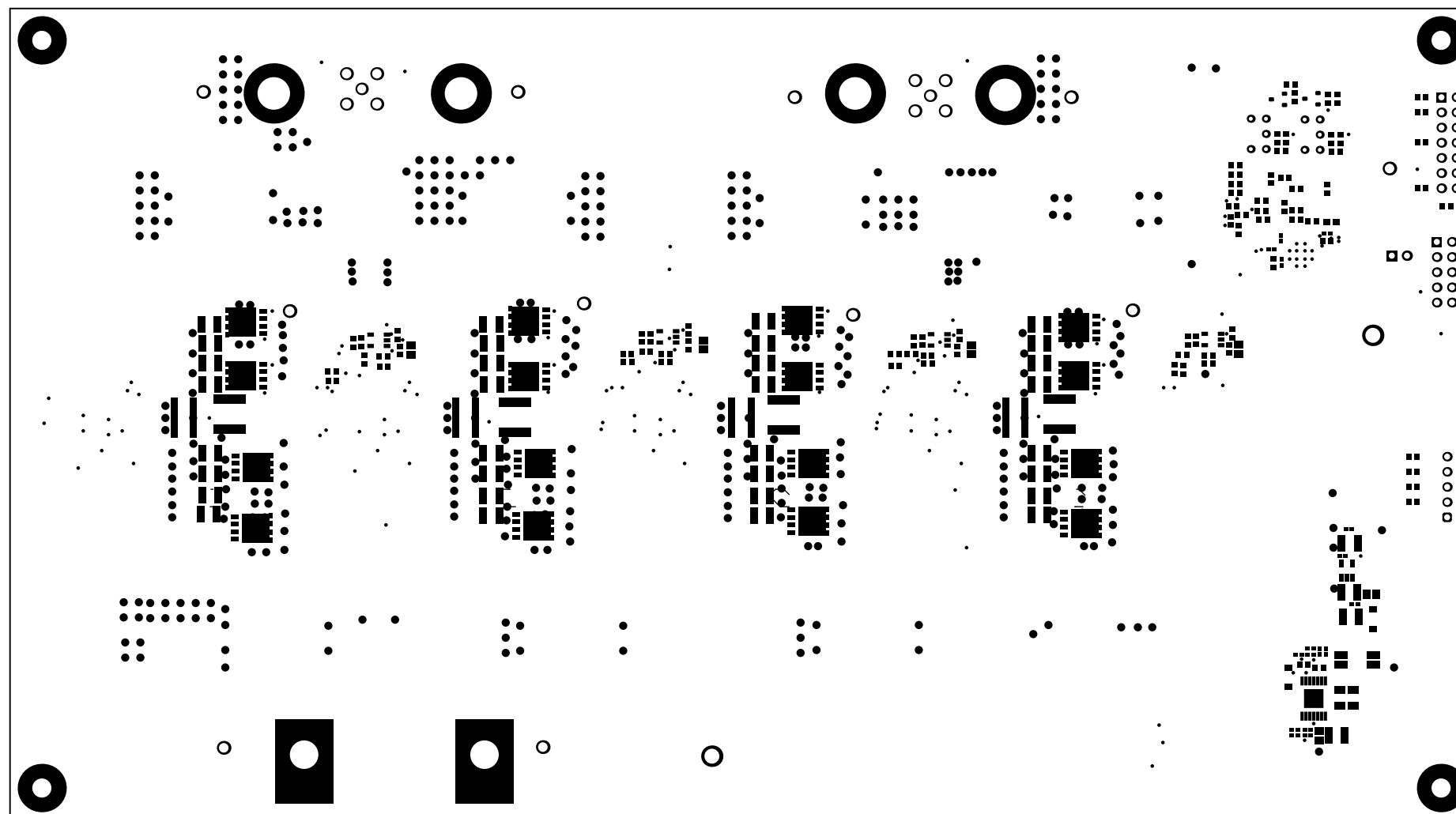
ALL ARTWORK VIEWED FROM TOP SIDE	BOARD #: PMP20587	REV: D	SUN REV: Not In VersionControl
LAYER NAME =	TID #: PMP20587		
PLOT NAME = Signal Layer 3	GENERATED : 7/1/2020	1:19:56 AM	TEXAS INSTRUMENTS



ALL ARTWORK VIEWED FROM TOP SIDE	BOARD #: PMP20587	REV: D	SUN REV: Not In VersionControl
LAYER NAME =	TID #: PMP20587		
PLOT NAME = Signal Layer 4	GENERATED : 7/1/2020	1:19:56 AM	TEXAS INSTRUMENTS

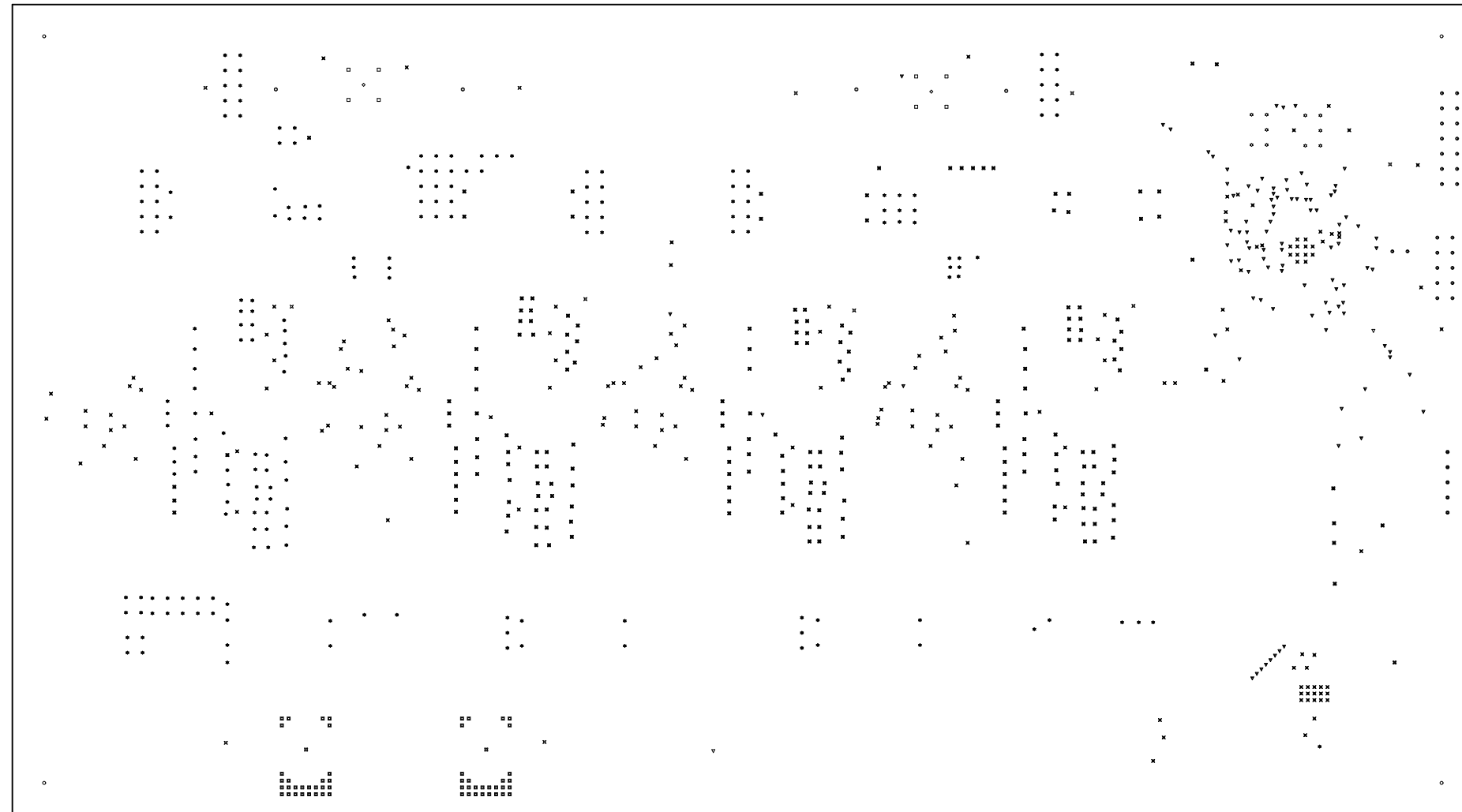


ALL ARTWORK VIEWED FROM TOP SIDE	BOARD #: PMP20587	REV: D	SUN REV: Not In VersionControl
LAYER NAME = Bottom Layer	TID #: PMP20587		
PLOT NAME = Bottom Layer	GENERATED : 7/1/2020	1:19:56 AM	TEXAS INSTRUMENTS

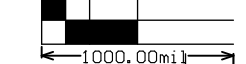
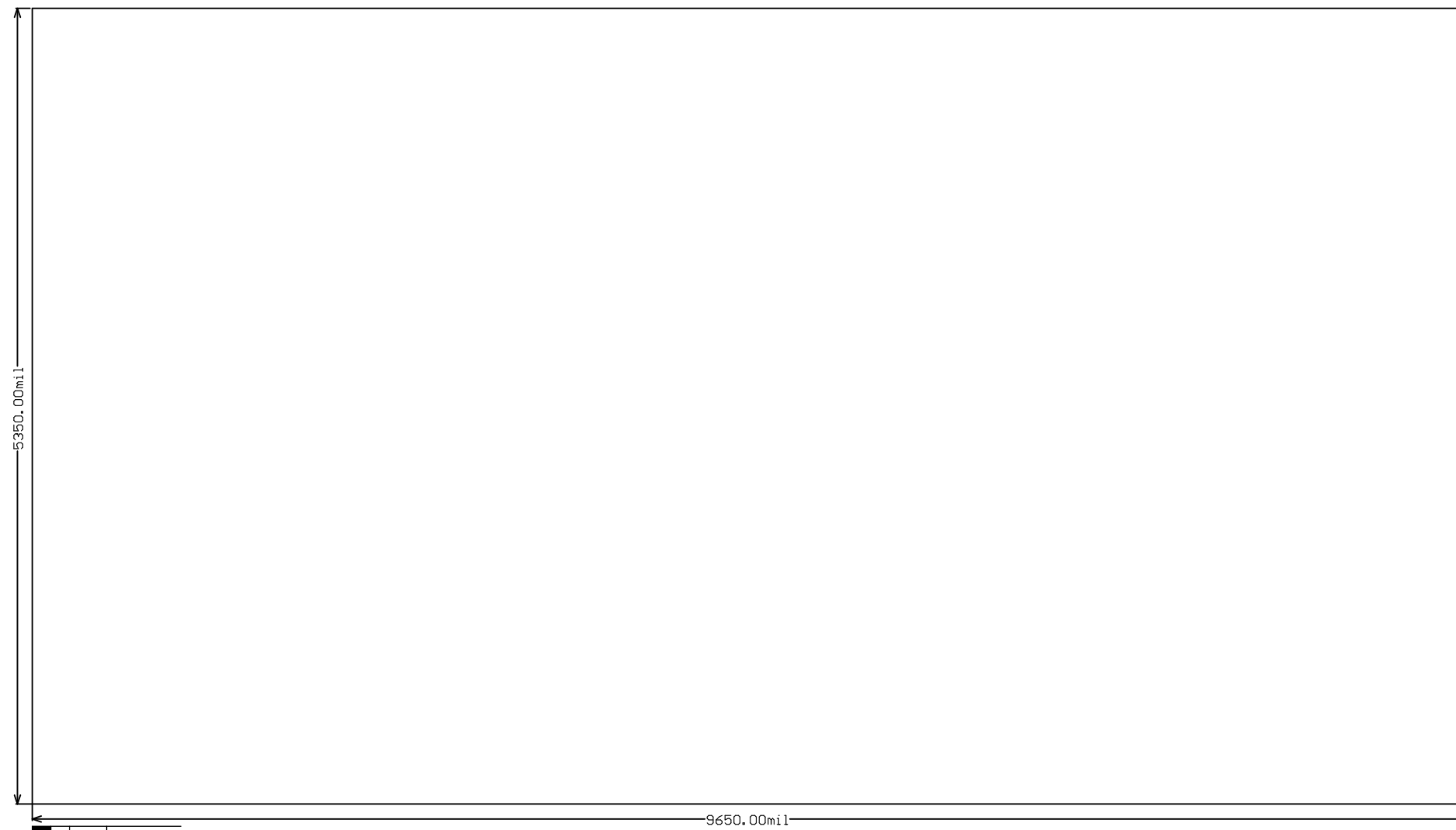


ALL ARTWORK VIEWED FROM TOP SIDE	BOARD #: PMP20587	REV: D	SUN REV: Not In VersionControl
LAYER NAME = Bottom Solder	TID #: PMP20587		
PLOT NAME = Bottom Solder Mask	GENERATED : 7/1/2020	1:19:56 AM	TEXAS INSTRUMENTS

Symbol	Count	Hole Size	Plated	Hole Type	Drill Layer Pair	Via/Pad	Pad Shape	Template	Description	Hole Tolerance (+)	Hole Tolerance (-)
◇	2	59.06mil (1.500mm)	PTH	Round	Top Layer - Bottom Layer	Pad	Rounded	c200h150			
▽	2	98.43mil (2.500mm)	PTH	Round	Top Layer - Bottom Layer	Pad	Rounded	c350h250			
⊠	2	188.00mil (4.775mm)	PTH	Round	Top Layer - Bottom Layer	Pad	Rectangle	r1397_965h478o-114_0p1880_1448			
○	4	125.98mil (3.200mm)	PTH	Round	Top Layer - Bottom Layer	Pad	Rounded	c800h320			
⊙	4	214.57mil (5.450mm)	PTH	Round	Top Layer - Bottom Layer	Pad	Rounded	c1000h545			
⊕	5	39.37mil (1.000mm)	PTH	Round	Top Layer - Bottom Layer	Pad	<Mixed>	<Mixed>			
□	8	62.99mil (1.600mm)	PTH	Round	Top Layer - Bottom Layer	Pad	Rounded	c210h160			
☆	10	26.00mil (0.660mm)	PTH	Round	Top Layer - Bottom Layer	Pad	Rounded	c127h66			
⊗	11	63.00mil (1.600mm)	PTH	Round	Top Layer - Bottom Layer	Pad	Rounded	c221h160			
◎	26	40.00mil (1.016mm)	PTH	Round	Top Layer - Bottom Layer	Pad	<Mixed>	<Mixed>			
▣	56	16.00mil (0.406mm)	PTH	Round	Top Layer - Bottom Layer	Via	Rounded	v81h41			
▽	98	14.50mil (0.368mm)	PTH	Round	Top Layer - Bottom Layer	Via	Rounded	<Mixed>			
✕	172	10.00mil (0.254mm)	PTH	Round	Top Layer - Bottom Layer	Via	Rounded	<Mixed>			
★	205	25.00mil (0.635mm)	PTH	Round	Top Layer - Bottom Layer	Via	Rounded	v127h64			
⊗	210	28.00mil (0.711mm)	PTH	Round	Top Layer - Bottom Layer	Via	Rounded	v127h71			
	815 Total										



ALL ARTWORK VIEWED FROM TOP SIDE	BOARD #: PMP20587	REV: D	SUN REV: Not In VersionControl
LAYER NAME = Drill Drawing	TID #: PMP20587		
PLOT NAME = Drill Drawing	GENERATED : 7/1/2020 1:19:57 AM		TEXAS INSTRUMENTS



ALL ARTWORK VIEWED FROM TOP SIDE	BOARD #: PMP20587	REV: D	SUN REV: Not In VersionControl
LAYER NAME = M2 Board Dimensions	TID #: PMP20587		
PLOT NAME = Board Dimensions	GENERATED : 7/1/2020	1:20:02 AM	TEXAS INSTRUMENTS

IMPORTANT NOTICE AND DISCLAIMER

TI PROVIDES TECHNICAL AND RELIABILITY DATA (INCLUDING DATASHEETS), DESIGN RESOURCES (INCLUDING REFERENCE DESIGNS), APPLICATION OR OTHER DESIGN ADVICE, WEB TOOLS, SAFETY INFORMATION, AND OTHER RESOURCES "AS IS" AND WITH ALL FAULTS, AND DISCLAIMS ALL WARRANTIES, EXPRESS AND IMPLIED, INCLUDING WITHOUT LIMITATION ANY IMPLIED WARRANTIES OF MERCHANTABILITY, FITNESS FOR A PARTICULAR PURPOSE OR NON-INFRINGEMENT OF THIRD PARTY INTELLECTUAL PROPERTY RIGHTS.

These resources are intended for skilled developers designing with TI products. You are solely responsible for (1) selecting the appropriate TI products for your application, (2) designing, validating and testing your application, and (3) ensuring your application meets applicable standards, and any other safety, security, or other requirements. These resources are subject to change without notice. TI grants you permission to use these resources only for development of an application that uses the TI products described in the resource. Other reproduction and display of these resources is prohibited. No license is granted to any other TI intellectual property right or to any third party intellectual property right. TI disclaims responsibility for, and you will fully indemnify TI and its representatives against, any claims, damages, costs, losses, and liabilities arising out of your use of these resources.

TI's products are provided subject to TI's Terms of Sale (www.ti.com/legal/termsofsale.html) or other applicable terms available either on ti.com or provided in conjunction with such TI products. TI's provision of these resources does not expand or otherwise alter TI's applicable warranties or warranty disclaimers for TI products.

Mailing Address: Texas Instruments, Post Office Box 655303, Dallas, Texas 75265
Copyright © 2020, Texas Instruments Incorporated