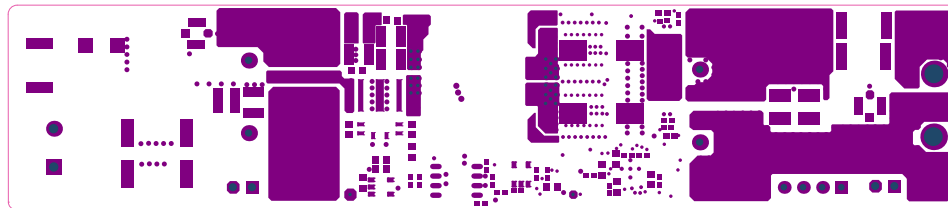
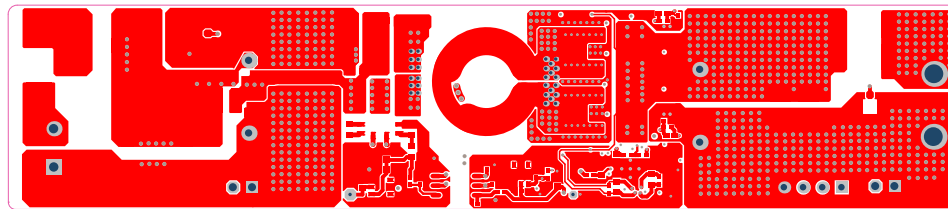


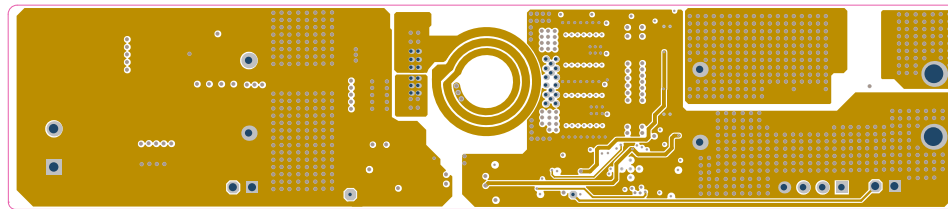
ALL ARTWORK VIEWED FROM TOP SIDE	BOARD #: PMP4497	REV: A	SUN REV: Not In VersionControl
LAYER NAME = Top Overlay	TID #: PMP4497		
PLOT NAME = Top Overlay	GENERATED : 2016/6/13 17:27:59	TEXAS INSTRUMENTS	



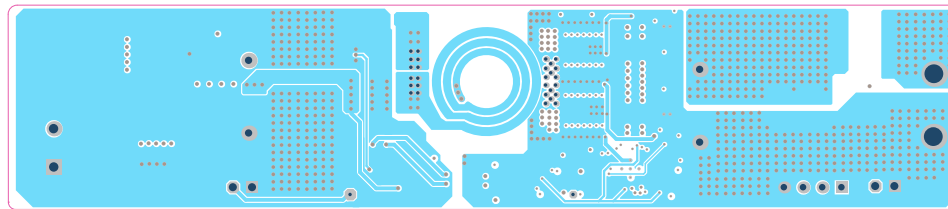
ALL ARTWORK VIEWED FROM TOP SIDE	BOARD #: PMP4497	REV: A	SUN REV: Not In VersionControl
LAYER NAME = Top Solder	TID #: PMP4497		
PLOT NAME = Top Solder Mask	GENERATED : 2016/6/13 17:28:01	TEXAS INSTRUMENTS	



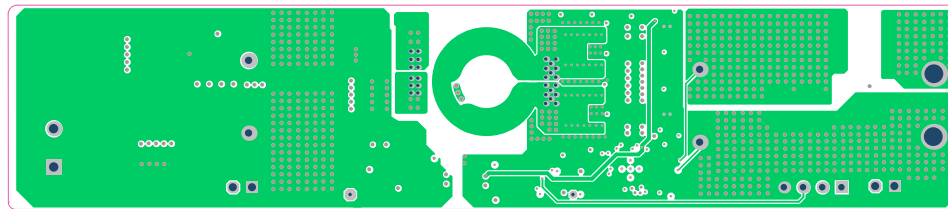
ALL ARTWORK VIEWED FROM TOP SIDE	BOARD #: PMP4497	REV: A	SUN REV: Not In VersionControl
LAYER NAME = Top Layer	TID #: PMP4497		
PLOT NAME = Top Layer	GENERATED : 2016/6/13 17:28:02	TEXAS INSTRUMENTS	



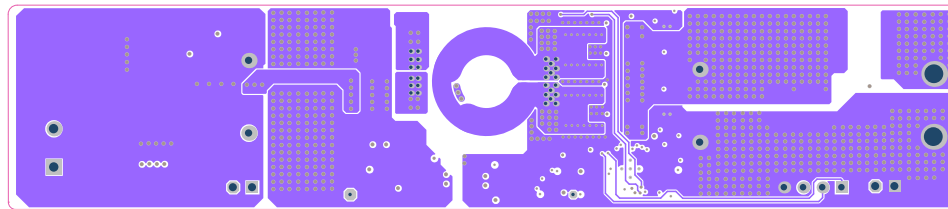
ALL ARTWORK VIEWED FROM TOP SIDE	BOARD #: PMP4497	REV: A	SUN REV: Not In VersionControl
LAYER NAME =	TID #: PMP4497		
PLOT NAME = Signal Layer 1	GENERATED : 2016/6/13 17:28:04	TEXAS INSTRUMENTS	



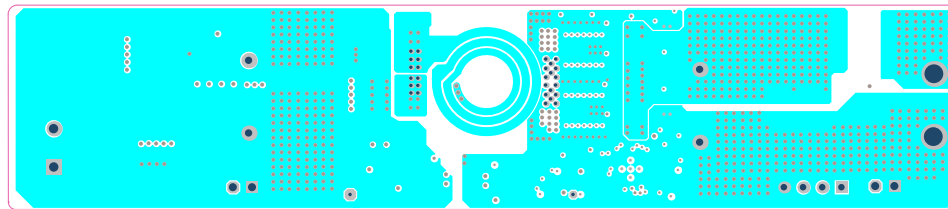
ALL ARTWORK VIEWED FROM TOP SIDE	BOARD #: PMP4497	REV: A	SUN REV: Not In VersionControl
LAYER NAME =	TID #: PMP4497		
PLOT NAME = Signal Layer 2	GENERATED : 2016/6/13 17:28:06	TEXAS INSTRUMENTS	



ALL ARTWORK VIEWED FROM TOP SIDE	BOARD #: PMP4497	REV: A	SUN REV: Not In VersionControl
LAYER NAME =	TID #: PMP4497		
PLOT NAME = Signal Layer 3	GENERATED : 2016/6/13 17:28:08	TEXAS INSTRUMENTS	

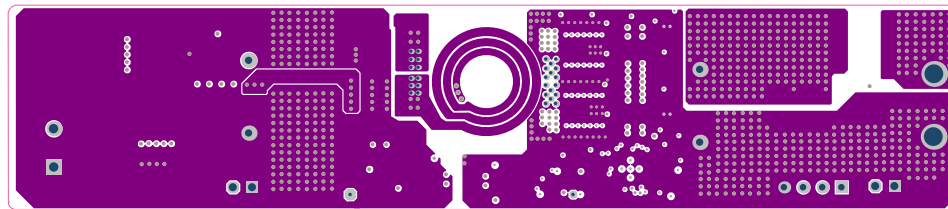


ALL ARTWORK VIEWED FROM TOP SIDE	BOARD #: PMP4497	REV: A	SUN REV: Not In VersionControl
LAYER NAME =	TID #: PMP4497		
PLOT NAME = Signal Layer 4	GENERATED : 2016/6/13 17:28:10	TEXAS INSTRUMENTS	

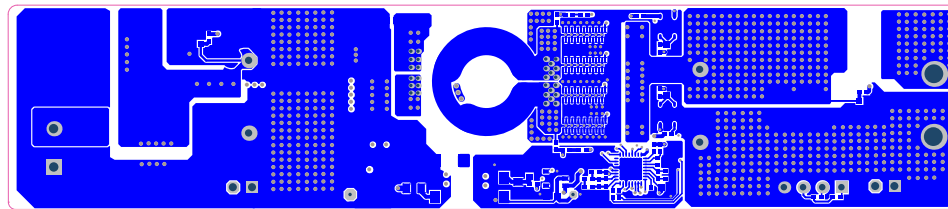


ALL ARTWORK VIEWED FROM TOP SIDE	BOARD #: PMP4497	REV: A	SUN REV: Not In VersionControl
LAYER NAME =	TID #: PMP4497		
PLOT NAME = Signal Layer 5	GENERATED : 2016/6/13 17:28:12		TEXAS INSTRUMENTS

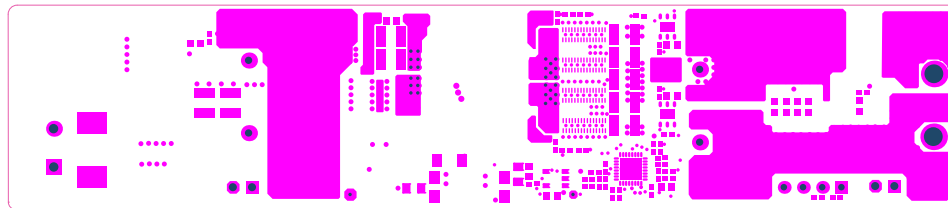




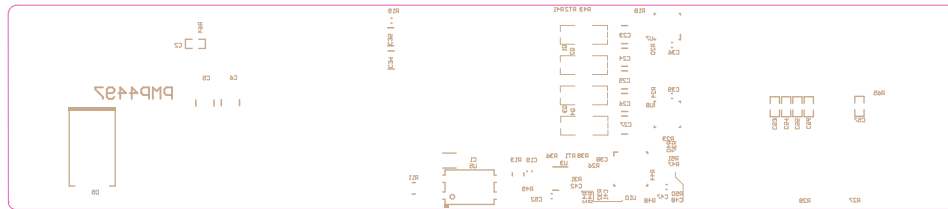
ALL ARTWORK VIEWED FROM TOP SIDE	BOARD #: PMP4497	REV: A	SUN REV: Not In VersionControl
LAYER NAME =	TID #: PMP4497		
PLOT NAME = Signal Layer 6	GENERATED : 2016/6/13 17:28:14		TEXAS INSTRUMENTS



ALL ARTWORK VIEWED FROM TOP SIDE	BOARD #: PMP4497	REV: A	SUN REV: Not In VersionControl
LAYER NAME = Bottom Layer	TID #: PMP4497		
PLOT NAME = Bottom Layer	GENERATED : 2016/6/13 17:28:16		TEXAS INSTRUMENTS

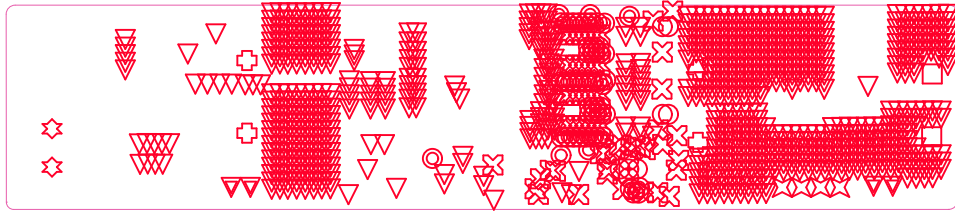


ALL ARTWORK VIEWED FROM TOP SIDE	BOARD #: PMP4497	REV: A	SUN REV: Not In VersionControl
LAYER NAME = Bottom Solder	TID #: PMP4497		
PLOT NAME = Bottom Solder Mask	GENERATED : 2016/6/13 17:28:18	TEXAS INSTRUMENTS	



ALL ARTWORK VIEWED FROM TOP SIDE	BOARD #: PMP4497	REV: A	SUN REV: Not In VersionControl
LAYER NAME = Bottom Overlay	TID #: PMP4497		
PLOT NAME = Bottom Overlay	GENERATED : 2016/6/13 17:28:21	TEXAS INSTRUMENTS	

Layer	Color	Plot Style	Plot	Plot Style
0	Black	Standard	Plot	Standard
1	Blue	Standard	Plot	Standard
2	Green	Standard	Plot	Standard
3	Red	Standard	Plot	Standard
4	Cyan	Standard	Plot	Standard
5	Magenta	Standard	Plot	Standard
6	Yellow	Standard	Plot	Standard
7	Black	Standard	Plot	Standard
8	Black	Standard	Plot	Standard
9	Black	Standard	Plot	Standard
10	Black	Standard	Plot	Standard
11	Black	Standard	Plot	Standard
12	Black	Standard	Plot	Standard
13	Black	Standard	Plot	Standard
14	Black	Standard	Plot	Standard
15	Black	Standard	Plot	Standard
16	Black	Standard	Plot	Standard
17	Black	Standard	Plot	Standard
18	Black	Standard	Plot	Standard
19	Black	Standard	Plot	Standard
20	Black	Standard	Plot	Standard
21	Black	Standard	Plot	Standard
22	Black	Standard	Plot	Standard
23	Black	Standard	Plot	Standard
24	Black	Standard	Plot	Standard
25	Black	Standard	Plot	Standard
26	Black	Standard	Plot	Standard
27	Black	Standard	Plot	Standard
28	Black	Standard	Plot	Standard
29	Black	Standard	Plot	Standard
30	Black	Standard	Plot	Standard
31	Black	Standard	Plot	Standard
32	Black	Standard	Plot	Standard
33	Black	Standard	Plot	Standard
34	Black	Standard	Plot	Standard
35	Black	Standard	Plot	Standard
36	Black	Standard	Plot	Standard
37	Black	Standard	Plot	Standard
38	Black	Standard	Plot	Standard
39	Black	Standard	Plot	Standard
40	Black	Standard	Plot	Standard
41	Black	Standard	Plot	Standard
42	Black	Standard	Plot	Standard
43	Black	Standard	Plot	Standard
44	Black	Standard	Plot	Standard
45	Black	Standard	Plot	Standard
46	Black	Standard	Plot	Standard
47	Black	Standard	Plot	Standard
48	Black	Standard	Plot	Standard
49	Black	Standard	Plot	Standard
50	Black	Standard	Plot	Standard
51	Black	Standard	Plot	Standard
52	Black	Standard	Plot	Standard
53	Black	Standard	Plot	Standard
54	Black	Standard	Plot	Standard
55	Black	Standard	Plot	Standard
56	Black	Standard	Plot	Standard
57	Black	Standard	Plot	Standard
58	Black	Standard	Plot	Standard
59	Black	Standard	Plot	Standard
60	Black	Standard	Plot	Standard
61	Black	Standard	Plot	Standard
62	Black	Standard	Plot	Standard
63	Black	Standard	Plot	Standard
64	Black	Standard	Plot	Standard
65	Black	Standard	Plot	Standard
66	Black	Standard	Plot	Standard
67	Black	Standard	Plot	Standard
68	Black	Standard	Plot	Standard
69	Black	Standard	Plot	Standard
70	Black	Standard	Plot	Standard
71	Black	Standard	Plot	Standard
72	Black	Standard	Plot	Standard
73	Black	Standard	Plot	Standard
74	Black	Standard	Plot	Standard
75	Black	Standard	Plot	Standard
76	Black	Standard	Plot	Standard
77	Black	Standard	Plot	Standard
78	Black	Standard	Plot	Standard
79	Black	Standard	Plot	Standard
80	Black	Standard	Plot	Standard
81	Black	Standard	Plot	Standard
82	Black	Standard	Plot	Standard
83	Black	Standard	Plot	Standard
84	Black	Standard	Plot	Standard
85	Black	Standard	Plot	Standard
86	Black	Standard	Plot	Standard
87	Black	Standard	Plot	Standard
88	Black	Standard	Plot	Standard
89	Black	Standard	Plot	Standard
90	Black	Standard	Plot	Standard
91	Black	Standard	Plot	Standard
92	Black	Standard	Plot	Standard
93	Black	Standard	Plot	Standard
94	Black	Standard	Plot	Standard
95	Black	Standard	Plot	Standard
96	Black	Standard	Plot	Standard
97	Black	Standard	Plot	Standard
98	Black	Standard	Plot	Standard
99	Black	Standard	Plot	Standard



ALL ARTWORK VIEWED FROM TOP SIDE	BOARD #: PMP4497	REV: A	SUN REV: Not In VersionControl
LAYER NAME = Drill Drawing	TID #: PMP4497		
PLOT NAME = Drill Drawing	GENERATED : 2016/6/13 17:28:23		TEXAS INSTRUMENTS



ALL ARTWORK VIEWED FROM TOP SIDE	BOARD #: PMP4497	REV: A	SUN REV: Not In VersionControl
LAYER NAME = Mechanical 2	TID #: PMP4497		
PLOT NAME = Board Dimensions	GENERATED : 2016/6/13 17:28:26	TEXAS INSTRUMENTS	

## IMPORTANT NOTICE FOR TI REFERENCE DESIGNS

Texas Instruments Incorporated ("TI") reference designs are solely intended to assist designers ("Designer(s)") who are developing systems that incorporate TI products. TI has not conducted any testing other than that specifically described in the published documentation for a particular reference design.

TI's provision of reference designs and any other technical, applications or design advice, quality characterization, reliability data or other information or services does not expand or otherwise alter TI's applicable published warranties or warranty disclaimers for TI products, and no additional obligations or liabilities arise from TI providing such reference designs or other items.

TI reserves the right to make corrections, enhancements, improvements and other changes to its reference designs and other items.

Designer understands and agrees that Designer remains responsible for using its independent analysis, evaluation and judgment in designing Designer's systems and products, and has full and exclusive responsibility to assure the safety of its products and compliance of its products (and of all TI products used in or for such Designer's products) with all applicable regulations, laws and other applicable requirements. Designer represents that, with respect to its applications, it has all the necessary expertise to create and implement safeguards that (1) anticipate dangerous consequences of failures, (2) monitor failures and their consequences, and (3) lessen the likelihood of failures that might cause harm and take appropriate actions. Designer agrees that prior to using or distributing any systems that include TI products, Designer will thoroughly test such systems and the functionality of such TI products as used in such systems. Designer may not use any TI products in life-critical medical equipment unless authorized officers of the parties have executed a special contract specifically governing such use. Life-critical medical equipment is medical equipment where failure of such equipment would cause serious bodily injury or death (e.g., life support, pacemakers, defibrillators, heart pumps, neurostimulators, and implantables). Such equipment includes, without limitation, all medical devices identified by the U.S. Food and Drug Administration as Class III devices and equivalent classifications outside the U.S.

Designers are authorized to use, copy and modify any individual TI reference design only in connection with the development of end products that include the TI product(s) identified in that reference design. HOWEVER, NO OTHER LICENSE, EXPRESS OR IMPLIED, BY ESTOPPEL OR OTHERWISE TO ANY OTHER TI INTELLECTUAL PROPERTY RIGHT, AND NO LICENSE TO ANY TECHNOLOGY OR INTELLECTUAL PROPERTY RIGHT OF TI OR ANY THIRD PARTY IS GRANTED HEREIN, including but not limited to any patent right, copyright, mask work right, or other intellectual property right relating to any combination, machine, or process in which TI products or services are used. Information published by TI regarding third-party products or services does not constitute a license to use such products or services, or a warranty or endorsement thereof. Use of the reference design or other items described above may require a license from a third party under the patents or other intellectual property of the third party, or a license from TI under the patents or other intellectual property of TI.

TI REFERENCE DESIGNS AND OTHER ITEMS DESCRIBED ABOVE ARE PROVIDED "AS IS" AND WITH ALL FAULTS. TI DISCLAIMS ALL OTHER WARRANTIES OR REPRESENTATIONS, EXPRESS OR IMPLIED, REGARDING THE REFERENCE DESIGNS OR USE OF THE REFERENCE DESIGNS, INCLUDING BUT NOT LIMITED TO ACCURACY OR COMPLETENESS, TITLE, ANY EPIDEMIC FAILURE WARRANTY AND ANY IMPLIED WARRANTIES OF MERCHANTABILITY, FITNESS FOR A PARTICULAR PURPOSE, AND NON-INFRINGEMENT OF ANY THIRD PARTY INTELLECTUAL PROPERTY RIGHTS.

TI SHALL NOT BE LIABLE FOR AND SHALL NOT DEFEND OR INDEMNIFY DESIGNERS AGAINST ANY CLAIM, INCLUDING BUT NOT LIMITED TO ANY INFRINGEMENT CLAIM THAT RELATES TO OR IS BASED ON ANY COMBINATION OF PRODUCTS AS DESCRIBED IN A TI REFERENCE DESIGN OR OTHERWISE. IN NO EVENT SHALL TI BE LIABLE FOR ANY ACTUAL, DIRECT, SPECIAL, COLLATERAL, INDIRECT, PUNITIVE, INCIDENTAL, CONSEQUENTIAL OR EXEMPLARY DAMAGES IN CONNECTION WITH OR ARISING OUT OF THE REFERENCE DESIGNS OR USE OF THE REFERENCE DESIGNS, AND REGARDLESS OF WHETHER TI HAS BEEN ADVISED OF THE POSSIBILITY OF SUCH DAMAGES.

TI's standard terms of sale for semiconductor products (<http://www.ti.com/sc/docs/stdterms.htm>) apply to the sale of packaged integrated circuit products. Additional terms may apply to the use or sale of other types of TI products and services.

Designer will fully indemnify TI and its representatives against any damages, costs, losses, and/or liabilities arising out of Designer's non-compliance with the terms and provisions of this Notice.

Mailing Address: Texas Instruments, Post Office Box 655303, Dallas, Texas 75265  
Copyright © 2016, Texas Instruments Incorporated