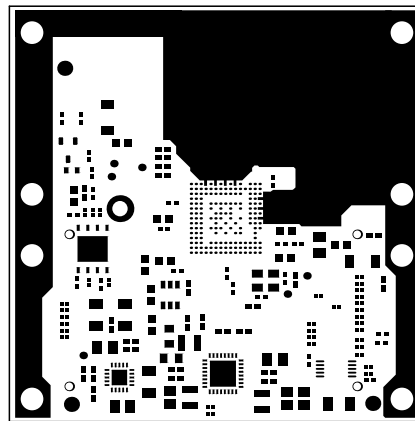
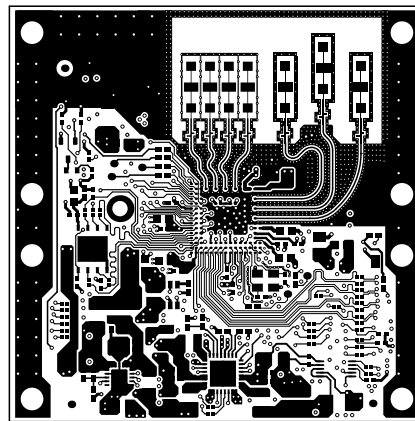


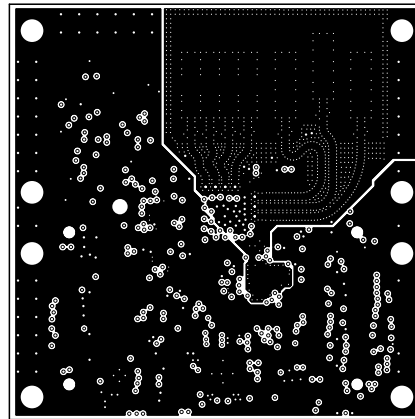
ALL ARTWORK VIEWED FROM TOP SIDE	BOARD #: PROC073	REV: A	SUN REV: Not In VersionControl
LAYER NAME = Top Overlay	TID #: N/A		
PLOT NAME = Top Overlay	GENERATED : 8/28/2018 2:54:28 PM	TEXAS INSTRUMENTS	



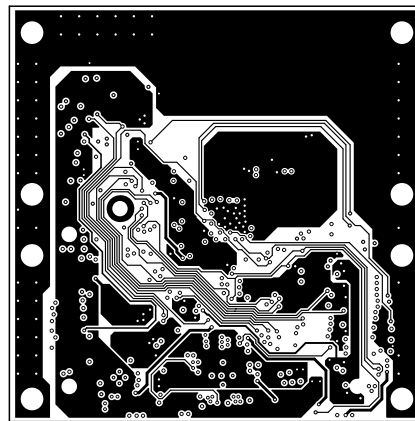
ALL ARTWORK VIEWED FROM TOP SIDE	BOARD #: PROC073	REV: A	SUN REV: Not In VersionControl
LAYER NAME = Top Solder	TID #: N/A		
PLOT NAME = Top Solder Mask	GENERATED : 8/28/2018 2:54:30 PM	TEXAS INSTRUMENTS	



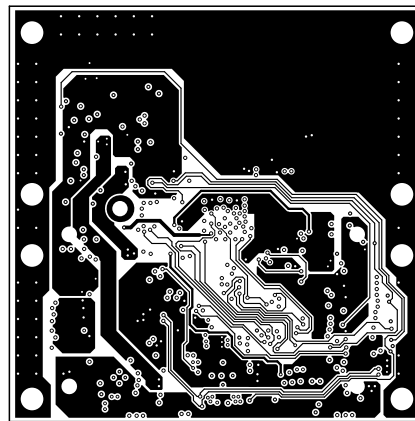
ALL ARTWORK VIEWED FROM TOP SIDE	BOARD #: PROC073	REV: A	SUN REV: Not In VersionControl
LAYER NAME = Top Layer	TID #: N/A		
PLOT NAME = Top Layer	GENERATED : 8/28/2018 2:54:31 PM	TEXAS INSTRUMENTS	



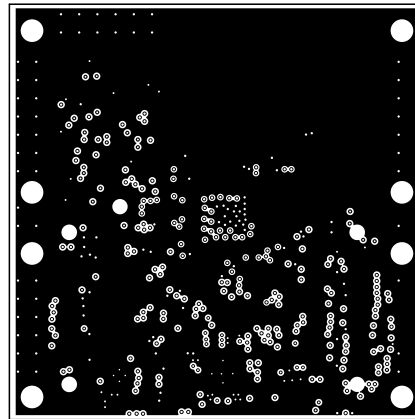
ALL ARTWORK VIEWED FROM TOP SIDE	BOARD #: PROC073	REV: A	SUN REV: Not In VersionControl
LAYER NAME = Layer 2 - GND1	TID #: N/A		
PLOT NAME = Signal Layer 1	GENERATED : 8/28/2018 2:54:32 PM	TEXAS INSTRUMENTS	



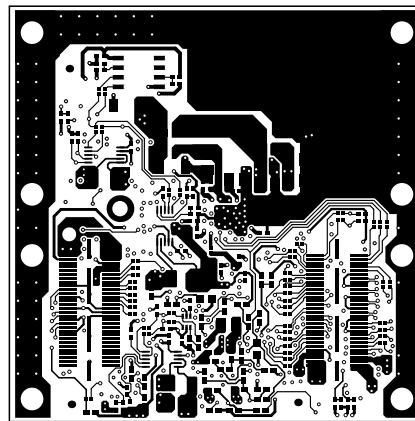
ALL ARTWORK VIEWED FROM TOP SIDE	BOARD #: PROC073	REV: A	SUN REV: Not In VersionControl
LAYER NAME = Layer 3 - Sig1	TID #: N/A		
PLOT NAME = Signal Layer 2	GENERATED : 8/28/2018 2:54:34 PM	TEXAS INSTRUMENTS	



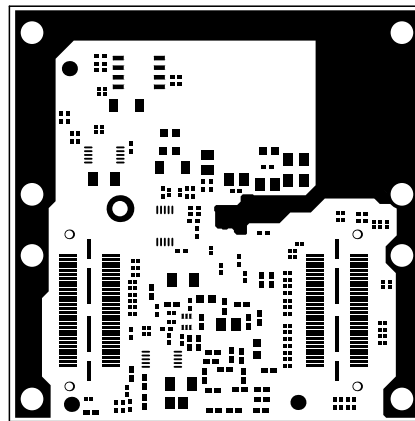
ALL ARTWORK VIEWED FROM TOP SIDE	BOARD #: PROC073	REV: A	SUN REV: Not In VersionControl
LAYER NAME = Layer 4 - Sig2	TID #: N/A		
PLOT NAME = Signal Layer 3	GENERATED : 8/28/2018 2:54:35 PM	TEXAS INSTRUMENTS	



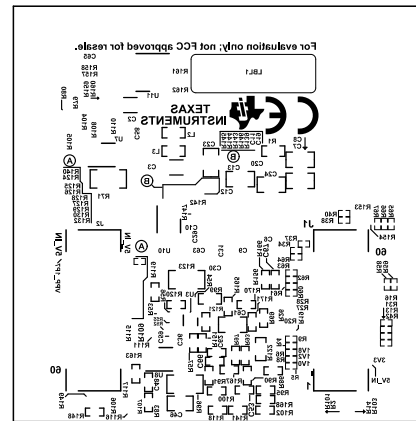
ALL ARTWORK VIEWED FROM TOP SIDE	BOARD #: PROC073	REV: A	SUN REV: Not In VersionControl
LAYER NAME = Layer 5 - GND2	TID #: N/A		
PLOT NAME = Signal Layer 4	GENERATED : 8/28/2018 2:54:37 PM	TEXAS INSTRUMENTS	



ALL ARTWORK VIEWED FROM TOP SIDE	BOARD #: PROC073	REV: A	SUN REV: Not In VersionControl
LAYER NAME = Bottom Layer	TID #: N/A		
PLOT NAME = Bottom Layer	GENERATED : 8/28/2018 2:54:38 PM	TEXAS INSTRUMENTS	



ALL ARTWORK VIEWED FROM TOP SIDE	BOARD #: PROC073	REV: A	SUN REV: Not In VersionControl
LAYER NAME = Bottom Solder	TID #: N/A		
PLOT NAME = Bottom Solder Mask	GENERATED : 8/28/2018 2:54:40 PM	TEXAS INSTRUMENTS	



ALL ARTWORK VIEWED FROM TOP SIDE	BOARD #: PROC073	REV: A	SUN REV: Not In VersionControl
LAYER NAME = Bottom Overlay	TID #: N/A		
PLOT NAME = Bottom Overlay	GENERATED : 8/28/2018 2:54:41 PM	TEXAS INSTRUMENTS	

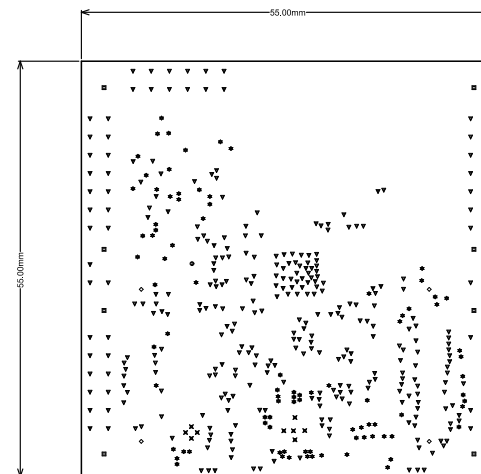
Drill Table: Top Layer to Bottom Layer

Symbol	Hit Count	Finished Hole Size	Plated	Hole Type	Physical Length	Rout Path Length	Drill Layer Pair
✕	9	7.87mil (0.200mm)	PTH	Round	-	-	Top Layer - Bottom Layer
✳	89	10.00mil (0.254mm)	PTH	Round	-	-	Top Layer - Bottom Layer
▼	340	12.20mil (0.310mm)	PTH	Round	-	-	Top Layer - Bottom Layer
◇	4	40.16mil (1.020mm)	NPTH	Round	-	-	Top Layer - Bottom Layer
●	1	80.00mil (2.032mm)	PTH	Round	-	-	Top Layer - Bottom Layer
■	8	118.11mil (3.000mm)	PTH	Round	-	-	Top Layer - Bottom Layer
	451 Total						

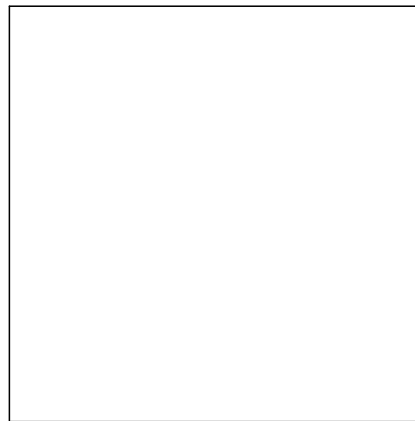
FOR PTH +/- 3MIL
 FOR NPTH +/- 2MIL
 FOR 7.874MIL DRILL +/-7.874MIL
 FOR 10MIL DRILL +/-10MIL
 FOR 12.2MIL DRILL +/-12.2MIL

Drill Table: Layer 1 To Layer 2

FOR 5.9MIL DRILL +/-5.9MIL



ALL ARTWORK VIEWED FROM TOP SIDE	BOARD #: PROC073	REV: A	SUN REV: Not In VersionControl
LAYER NAME = Drill Drawing	TID #: N/A		
PLOT NAME = Drill Drawing	GENERATED : 8/28/2018 2:54:43 PM	TEXAS INSTRUMENTS	



1000.00mil

ALL ARTWORK VIEWED FROM TOP SIDE	BOARD #: PROC073	REV: A	SUN REV: Not In VersionControl
LAYER NAME = MI Board Outline	TID #: N/A		
PLOT NAME = Board Dimensions	GENERATED : 8/28/2018 2:54:53 PM	TEXAS INSTRUMENTS	

IMPORTANT NOTICE AND DISCLAIMER

TI PROVIDES TECHNICAL AND RELIABILITY DATA (INCLUDING DATASHEETS), DESIGN RESOURCES (INCLUDING REFERENCE DESIGNS), APPLICATION OR OTHER DESIGN ADVICE, WEB TOOLS, SAFETY INFORMATION, AND OTHER RESOURCES "AS IS" AND WITH ALL FAULTS, AND DISCLAIMS ALL WARRANTIES, EXPRESS AND IMPLIED, INCLUDING WITHOUT LIMITATION ANY IMPLIED WARRANTIES OF MERCHANTABILITY, FITNESS FOR A PARTICULAR PURPOSE OR NON-INFRINGEMENT OF THIRD PARTY INTELLECTUAL PROPERTY RIGHTS.

These resources are intended for skilled developers designing with TI products. You are solely responsible for (1) selecting the appropriate TI products for your application, (2) designing, validating and testing your application, and (3) ensuring your application meets applicable standards, and any other safety, security, or other requirements. These resources are subject to change without notice. TI grants you permission to use these resources only for development of an application that uses the TI products described in the resource. Other reproduction and display of these resources is prohibited. No license is granted to any other TI intellectual property right or to any third party intellectual property right. TI disclaims responsibility for, and you will fully indemnify TI and its representatives against, any claims, damages, costs, losses, and liabilities arising out of your use of these resources.

TI's products are provided subject to TI's Terms of Sale (www.ti.com/legal/termsofsale.html) or other applicable terms available either on ti.com or provided in conjunction with such TI products. TI's provision of these resources does not expand or otherwise alter TI's applicable warranties or warranty disclaimers for TI products.

Mailing Address: Texas Instruments, Post Office Box 655303, Dallas, Texas 75265
Copyright © 2018, Texas Instruments Incorporated