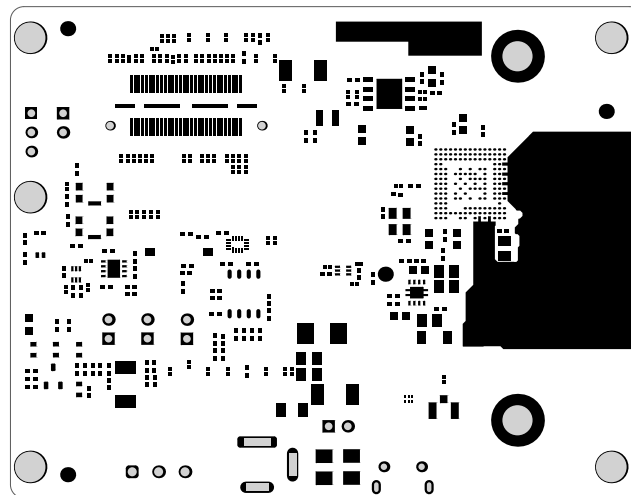
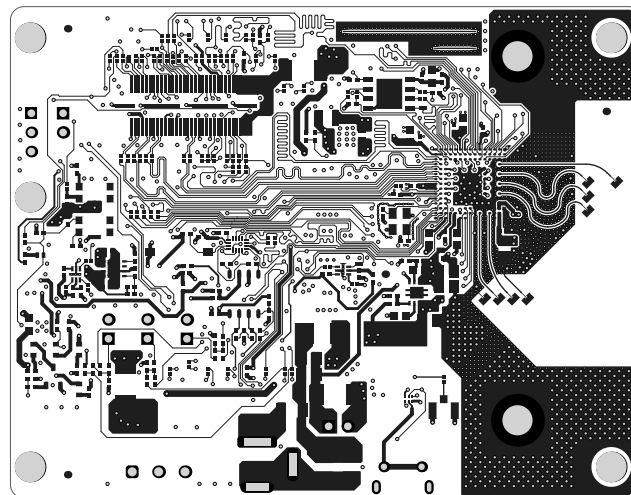


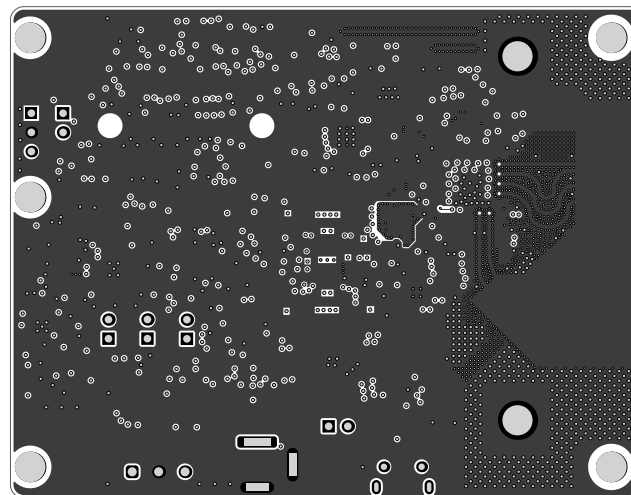
ALL ARTWORK VIEWED FROM TOP SIDE	BOARD #: PROC049	REV: B	SUN REV: Not In VersionControl
LAYER NAME = SILKSCREEN TOP	TID #: N/A		
PLOT NAME =Top Overlay	GENERATED : 4/11/2018	10:13:38 AM	TEXAS INSTRUMENTS



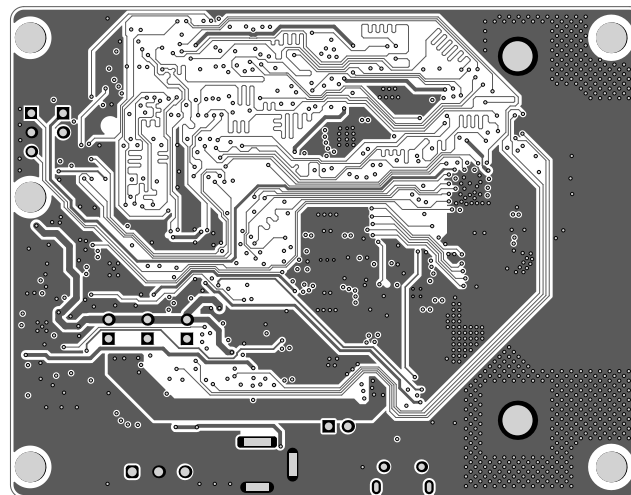
ALL ARTWORK VIEWED FROM TOP SIDE	BOARD #: PROC049	REV: B	SUN REV: Not In VersionControl
LAYER NAME = SOLDERMASK TOP	TID #: N/A		
PLOT NAME =Top Solder Mask	GENERATED : 4/11/2018 10:13:38 AM	TEXAS INSTRUMENTS	



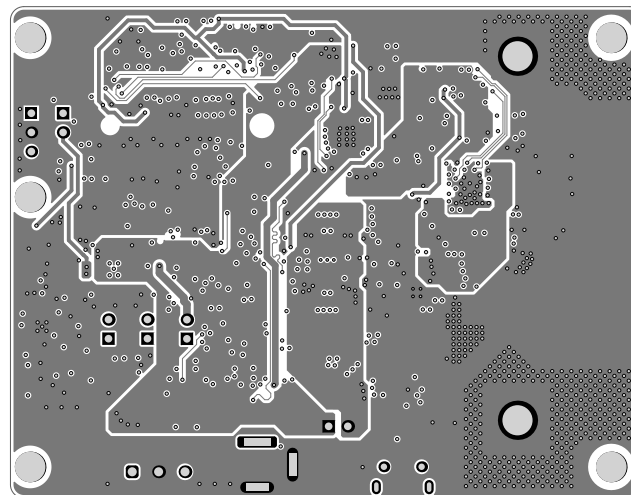
ALL ARTWORK VIEWED FROM TOP SIDE	BOARD #: PROC049	REV: B	SUN REV: Not In VersionControl
LAYER NAME = TOP	TID #: N/A		
PLOT NAME =Top Layer	GENERATED : 4/11/2018	10:13:38 AM	TEXAS INSTRUMENTS



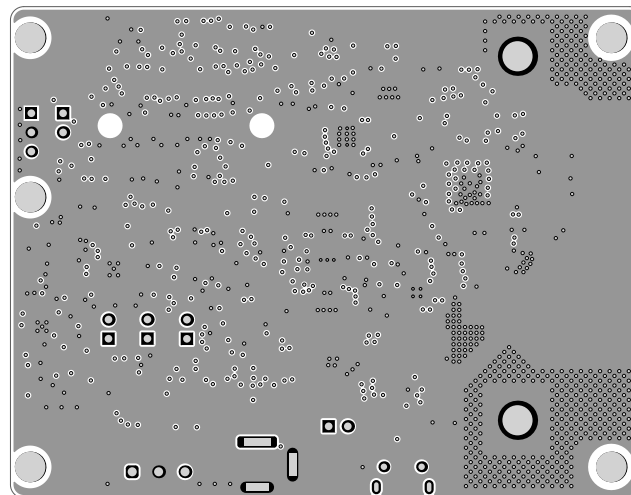
ALL ARTWORK VIEWED FROM TOP SIDE	BOARD #: PROC049	REV: B	SUN REV: Not In VersionControl
LAYER NAME = LAYER-2 GND1	TID #: N/A		
PLOT NAME =Signal Layer 1	GENERATED : 4/11/2018	10:13:38 AM	TEXAS INSTRUMENTS



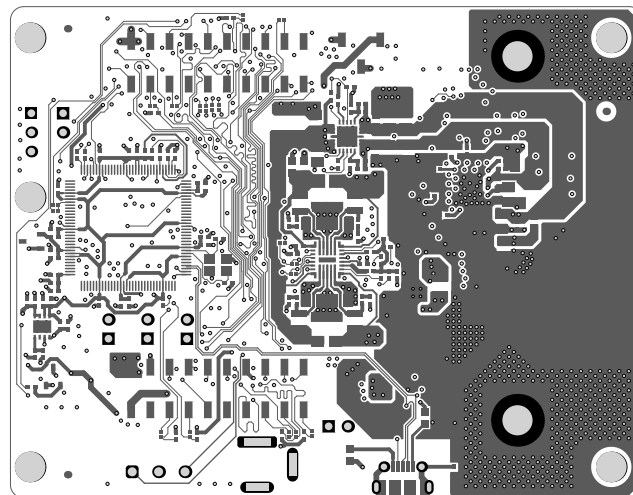
ALL ARTWORK VIEWED FROM TOP SIDE	BOARD #: PROC049	REV: B	SUN REV: Not In VersionControl
LAYER NAME =LAYER-3 GND/SIGNAL	TID #: N/A		
PLOT NAME =Signal Layer 2	GENERATED : 4/11/2018	10:13:38 AM	TEXAS INSTRUMENTS



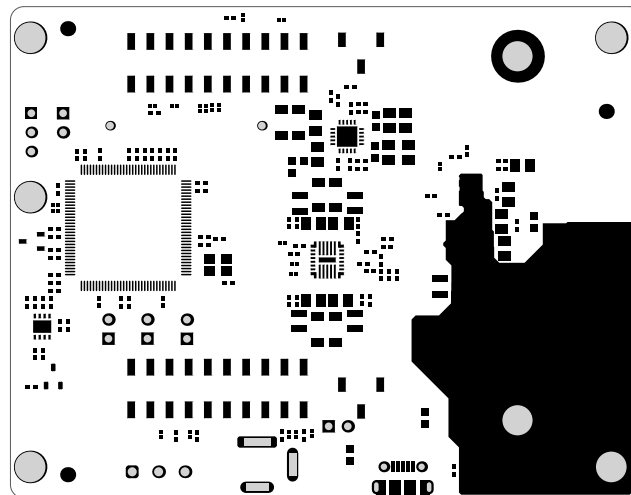
ALL ARTWORK VIEWED FROM TOP SIDE	BOARD #: PROC049	REV: B	SUN REV: Not In VersionControl
LAYER NAME = LAYER-4 GND/SIGNAL	TID #: N/A		
PLOT NAME =Signal Layer 3	GENERATED : 4/11/2018 10:13:38 AM	TEXAS INSTRUMENTS	



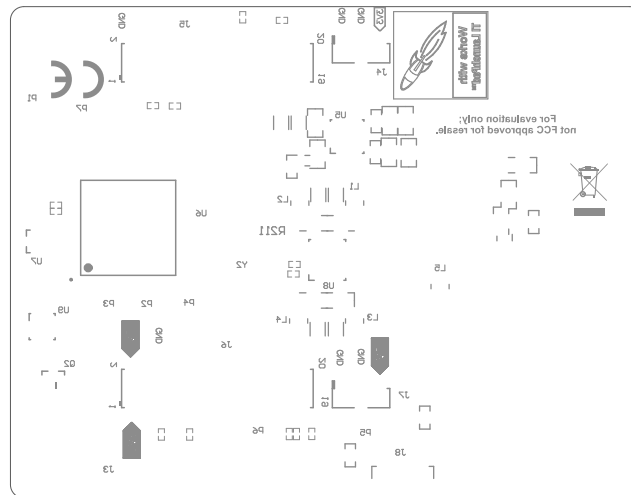
ALL ARTWORK VIEWED FROM TOP SIDE	BOARD #: PROC049	REV: B	SUN REV: Not In VersionControl
LAYER NAME = LAYER-5 GND2	TID #: N/A		
PLOT NAME =Signal Layer 4	GENERATED : 4/11/2018 10:13:38 AM	TEXAS INSTRUMENTS	



ALL ARTWORK VIEWED FROM TOP SIDE	BOARD #: PROC049	REV: B	SUN REV: Not In VersionControl
LAYER NAME = BOTTOM	TID #: N/A		
PLOT NAME =Bottom Layer	GENERATED : 4/11/2018 10:13:38 AM	TEXAS INSTRUMENTS	



ALL ARTWORK VIEWED FROM TOP SIDE	BOARD #: PROC049	REV: B	SUN REV: Not In VersionControl
LAYER NAME = SOLDERMASK BOTTOM	TID #: N/A		
PLOT NAME =Bottom Solder Mask	GENERATED : 4/11/2018	10:13:39 AM	TEXAS INSTRUMENTS



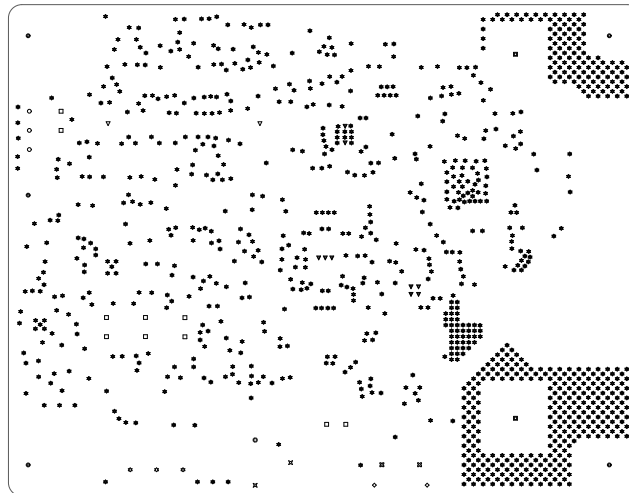
ALL ARTWORK VIEWED FROM TOP SIDE	BOARD #: PROC049	REV: B	SUN REV: Not In VersionControl
LAYER NAME = SILKSCREEN BOTTOM	TID #: N/A		
PLOT NAME =Bottom Overlay	GENERATED : 4/11/2018	10:13:39 AM	TEXAS INSTRUMENTS

Symbol	Count	Hole Size	Hole Length	Plated	Drill Layer Pair
▽	9	7.87mil (0.200mm)	-	PTH	TOP - BOTTOM
✱	1037	12.20mil (0.310mm)	-	PTH	TOP - BOTTOM
◇	2	23.62mil (0.600mm)	51.18mil (1.300mm)	PTH	TOP - BOTTOM
⊗	2	33.47mil (0.850mm)	-	PTH	TOP - BOTTOM
⊗	2	39.37mil (1.000mm)	118.11mil (3.000mm)	PTH	TOP - BOTTOM
⊗	1	39.37mil (1.000mm)	137.80mil (3.500mm)	PTH	TOP - BOTTOM
□	10	40.00mil (1.016mm)	-	PTH	TOP - BOTTOM
▽	2	40.16mil (1.020mm)	-	NPTH	TOP - BOTTOM
○	3	40.16mil (1.020mm)	-	PTH	TOP - BOTTOM
✱	3	47.24mil (1.200mm)	-	PTH	TOP - BOTTOM
■	2	157.48mil (4.000mm)	-	PTH	TOP - BOTTOM
●	5	160.00mil (4.064mm)	-	NPTH	TOP - BOTTOM

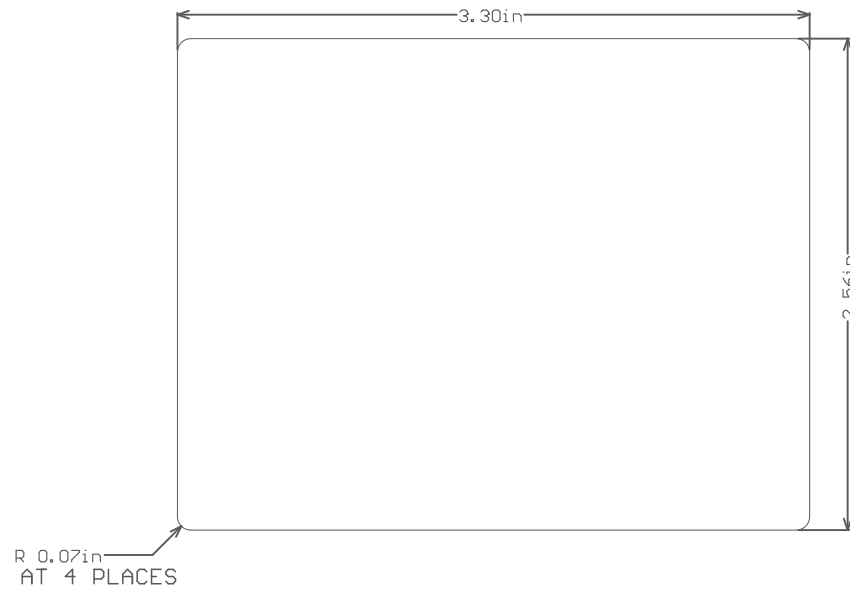
Slot definitions : Routed Path Length = Calculated from tool start centre position to tool end centre position.
Hole Length = Routed Path Length - Tool Size = Slot length as defined in the PCB layout

FOR 7.87MIL DRILL +0/-7.87MIL
FOR 12.20 MIL DRILL +0/-12.20MIL
FOR PTH +/-3MIL
FOR NPTH +/-2MIL

FOR 5.90 MIL DRILL +0/-5.90MIL



ALL ARTWORK VIEWED FROM TOP SIDE	BOARD #: PROC049	REV: B	SUN REV: Not In VersionControl
LAYER NAME = FAB_DWG	TID #: N/A		
PLOT NAME =Drill Drawing	GENERATED : 4/11/2018	10:13:39 AM	TEXAS INSTRUMENTS



ALL ARTWORK VIEWED FROM TOP SIDE	BOARD #: PROC049	REV: B	SUN REV: Not In VersionControl
LAYER NAME =	TID #: N/A		
PLOT NAME =Board Dimensions	GENERATED : 4/11/2018	10:13:45 AM	TEXAS INSTRUMENTS

IMPORTANT NOTICE AND DISCLAIMER

TI PROVIDES TECHNICAL AND RELIABILITY DATA (INCLUDING DATASHEETS), DESIGN RESOURCES (INCLUDING REFERENCE DESIGNS), APPLICATION OR OTHER DESIGN ADVICE, WEB TOOLS, SAFETY INFORMATION, AND OTHER RESOURCES "AS IS" AND WITH ALL FAULTS, AND DISCLAIMS ALL WARRANTIES, EXPRESS AND IMPLIED, INCLUDING WITHOUT LIMITATION ANY IMPLIED WARRANTIES OF MERCHANTABILITY, FITNESS FOR A PARTICULAR PURPOSE OR NON-INFRINGEMENT OF THIRD PARTY INTELLECTUAL PROPERTY RIGHTS.

These resources are intended for skilled developers designing with TI products. You are solely responsible for (1) selecting the appropriate TI products for your application, (2) designing, validating and testing your application, and (3) ensuring your application meets applicable standards, and any other safety, security, or other requirements. These resources are subject to change without notice. TI grants you permission to use these resources only for development of an application that uses the TI products described in the resource. Other reproduction and display of these resources is prohibited. No license is granted to any other TI intellectual property right or to any third party intellectual property right. TI disclaims responsibility for, and you will fully indemnify TI and its representatives against, any claims, damages, costs, losses, and liabilities arising out of your use of these resources.

TI's products are provided subject to TI's Terms of Sale (www.ti.com/legal/termsofsale.html) or other applicable terms available either on ti.com or provided in conjunction with such TI products. TI's provision of these resources does not expand or otherwise alter TI's applicable warranties or warranty disclaimers for TI products.

Mailing Address: Texas Instruments, Post Office Box 655303, Dallas, Texas 75265
Copyright © 2018, Texas Instruments Incorporated