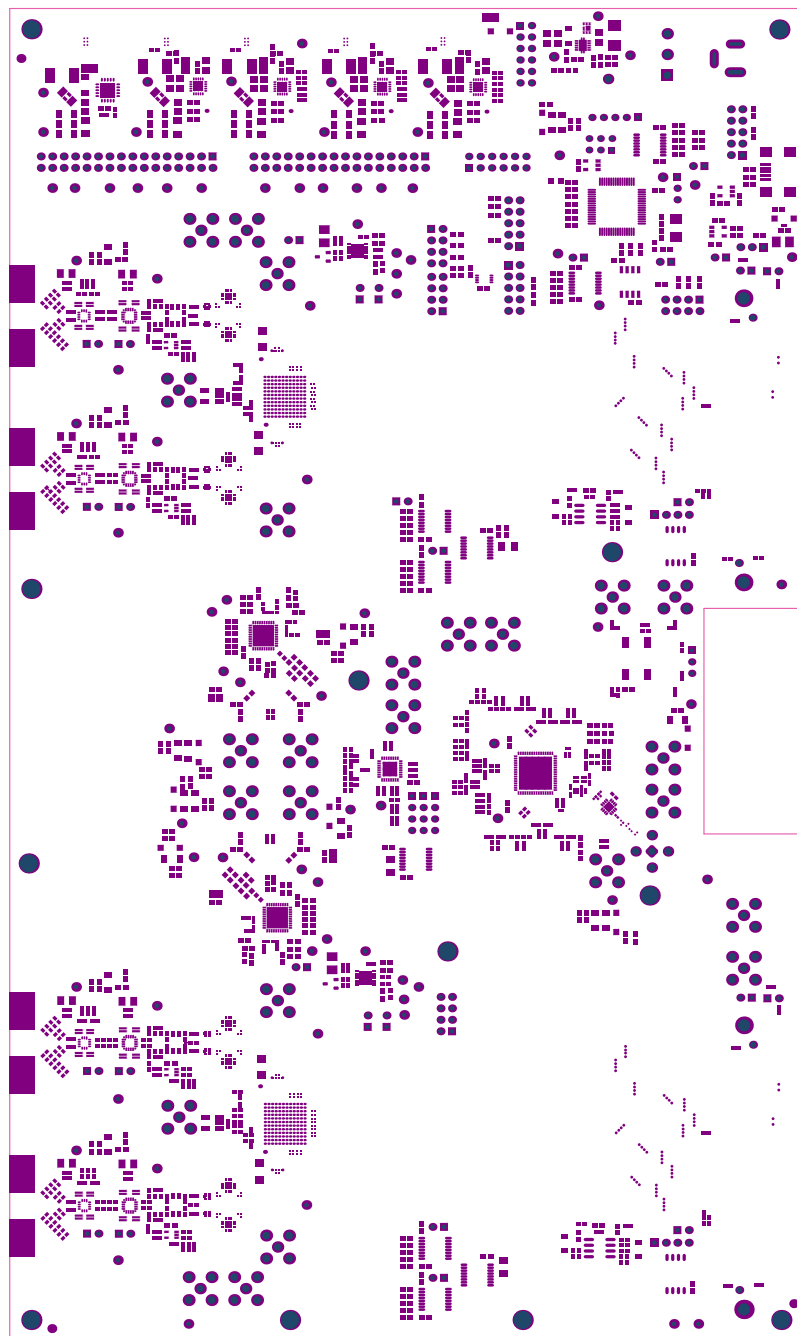
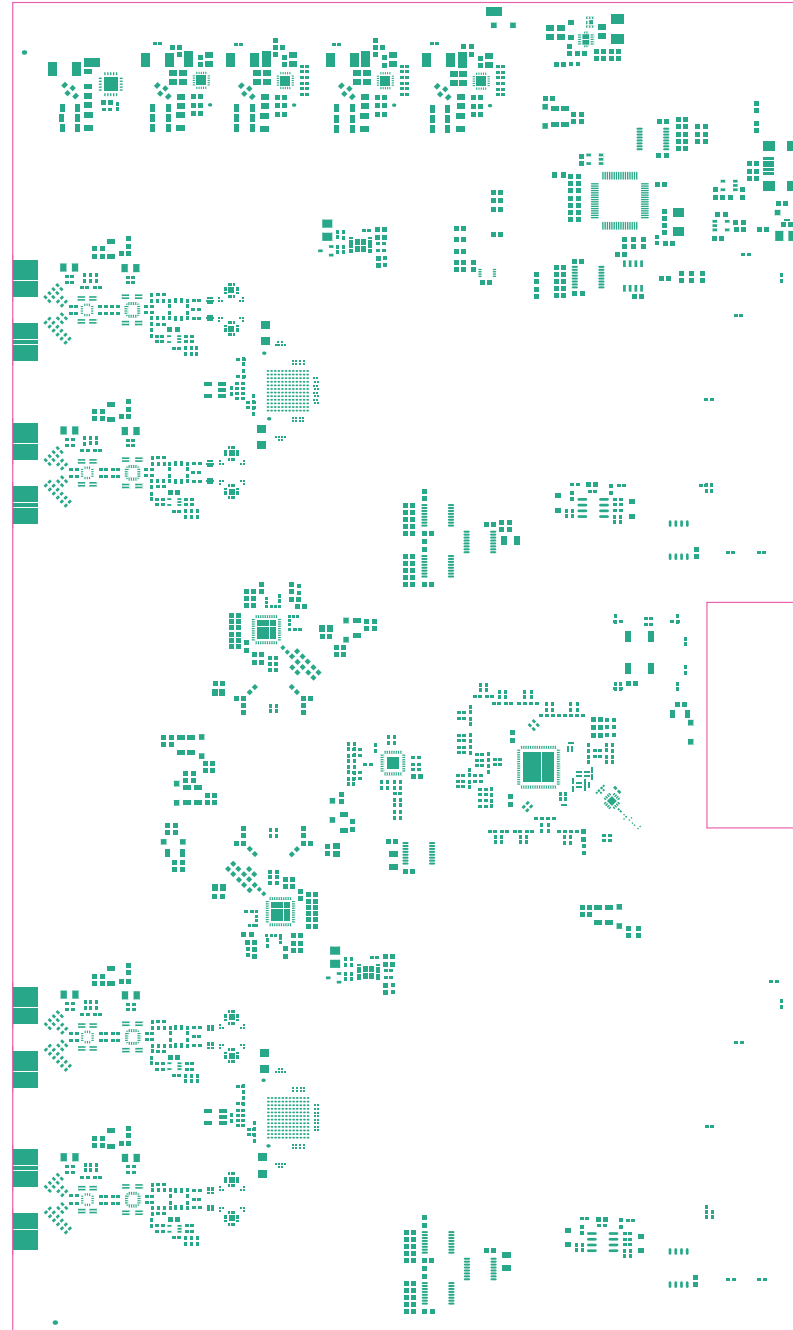


ALL ARTWORK VIEWED FROM TOP SIDE	BOARD #: TIDA-01022	REV: e3	SUN REV:
LAYER NAME = TOP OVERLAY	TID #: 010128		
PLOT NAME = Top Overlay	GENERATED : 5/15/2019 9:36:48 PM	TEXAS INSTRUMENTS	

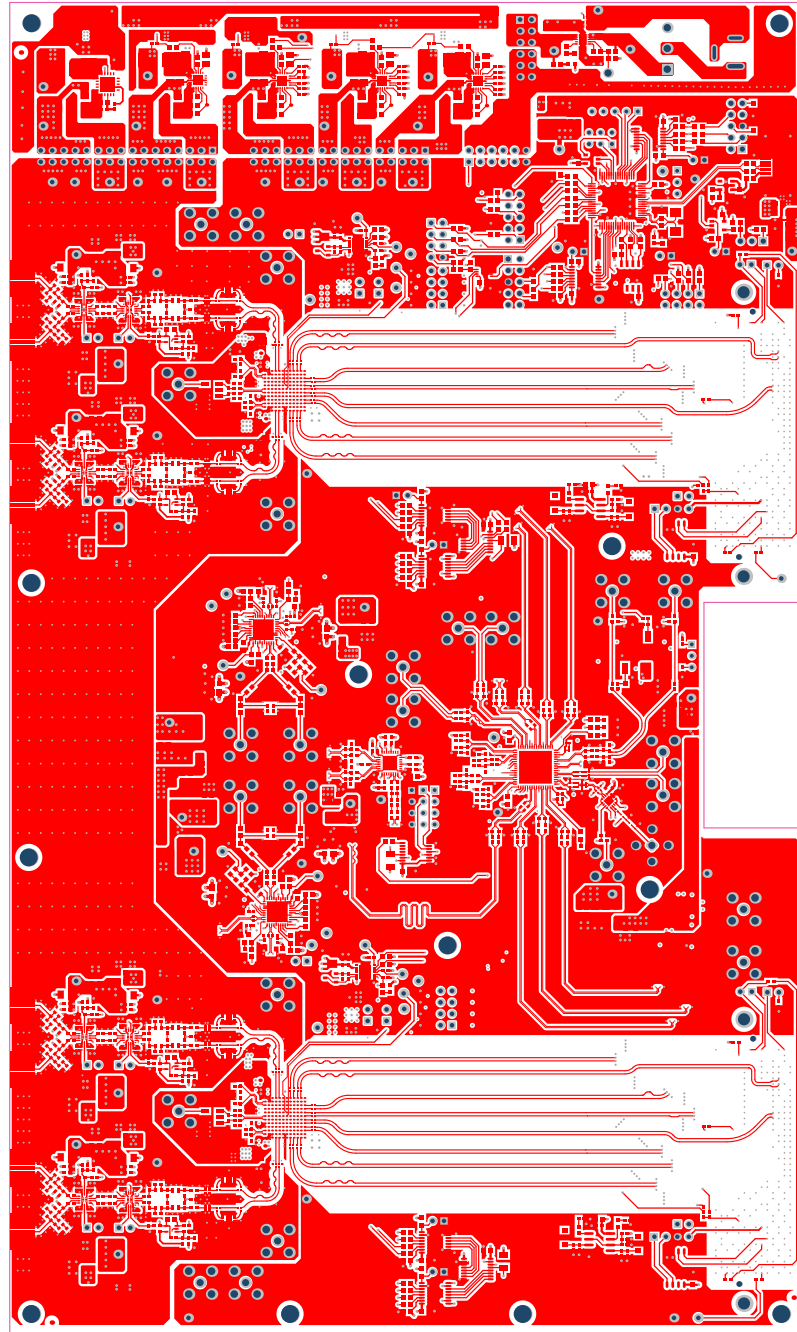


ALL ARTWORK VIEWED FROM TOP SIDE	BOARD #: TIDA-010128	REV: 03	SUN REV:
LAYER NAME = TOP SOLDER	TID #: 010128		
PLOT NAME = Top Solder Mask	GENERATED : 5/15/2019 9:36:50 PM		TEXAS INSTRUMENTS

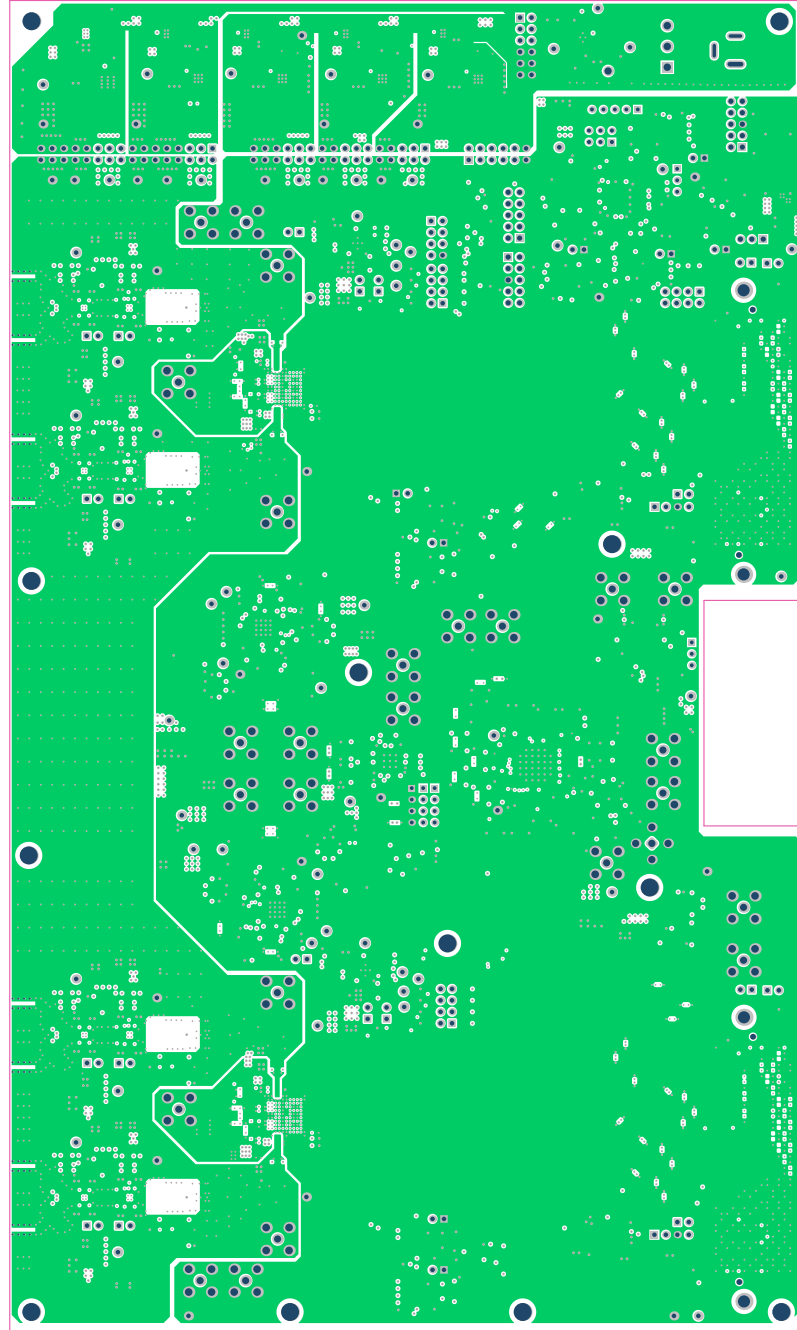


Subs on TIDA-01022 PCB

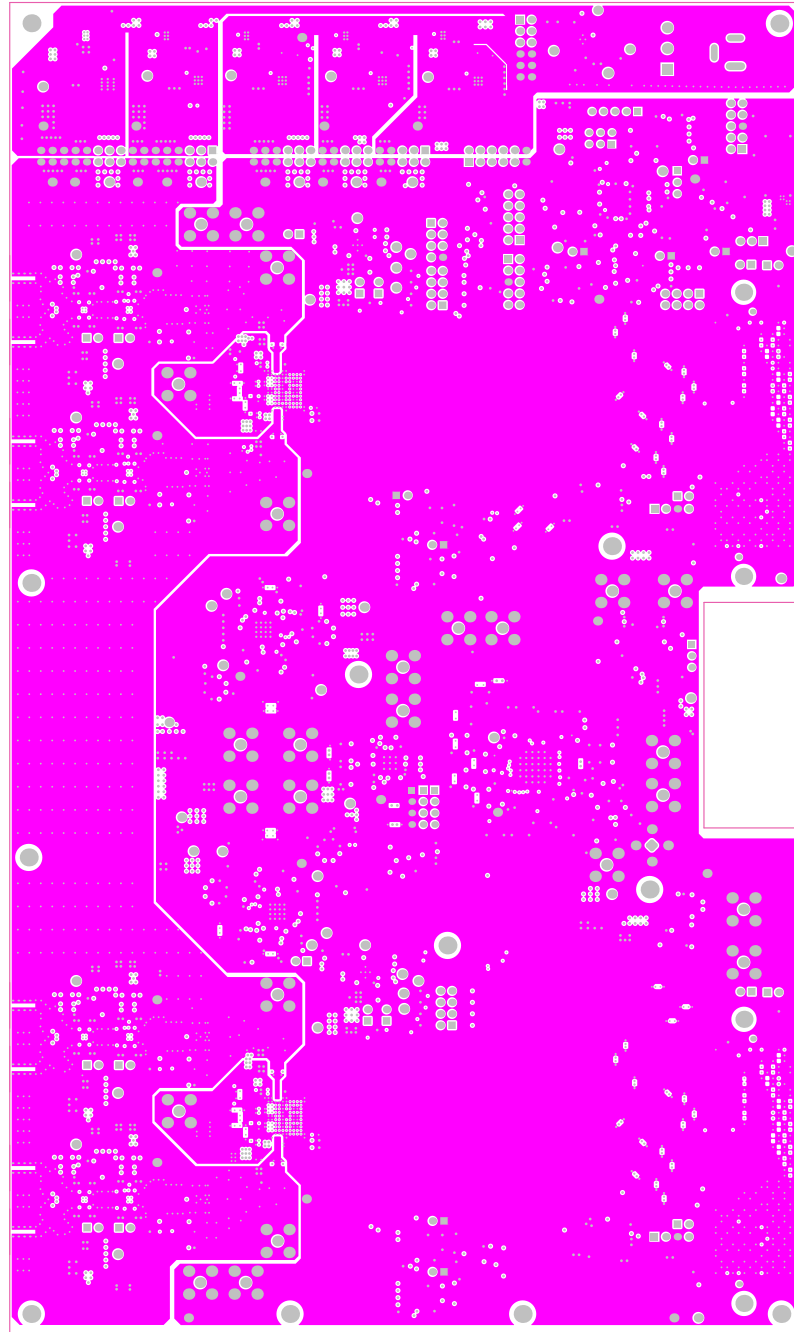
ALL ARTWORK VIEWED FROM TOP SIDE	BOARD #: TIDA-010128	REV: 03	SUN REV:
LAYER NAME = TOP PASTE	TID #: 010128		
PLOT NAME = TOP PASTE	GENERATED : 5/15/2019 9:36:51 PM		TEXAS INSTRUMENTS



ALL ARTWORK VIEWED FROM TOP SIDE	BOARD #: TIDA-010128	REV: c3	SUN REV:
LAYER NAME = L1_TOP LAYER	TID #: 010128		
PLOT NAME = L1_Top Layer	GENERATED : 5/15/2019 9:36:52 PM		TEXAS INSTRUMENTS

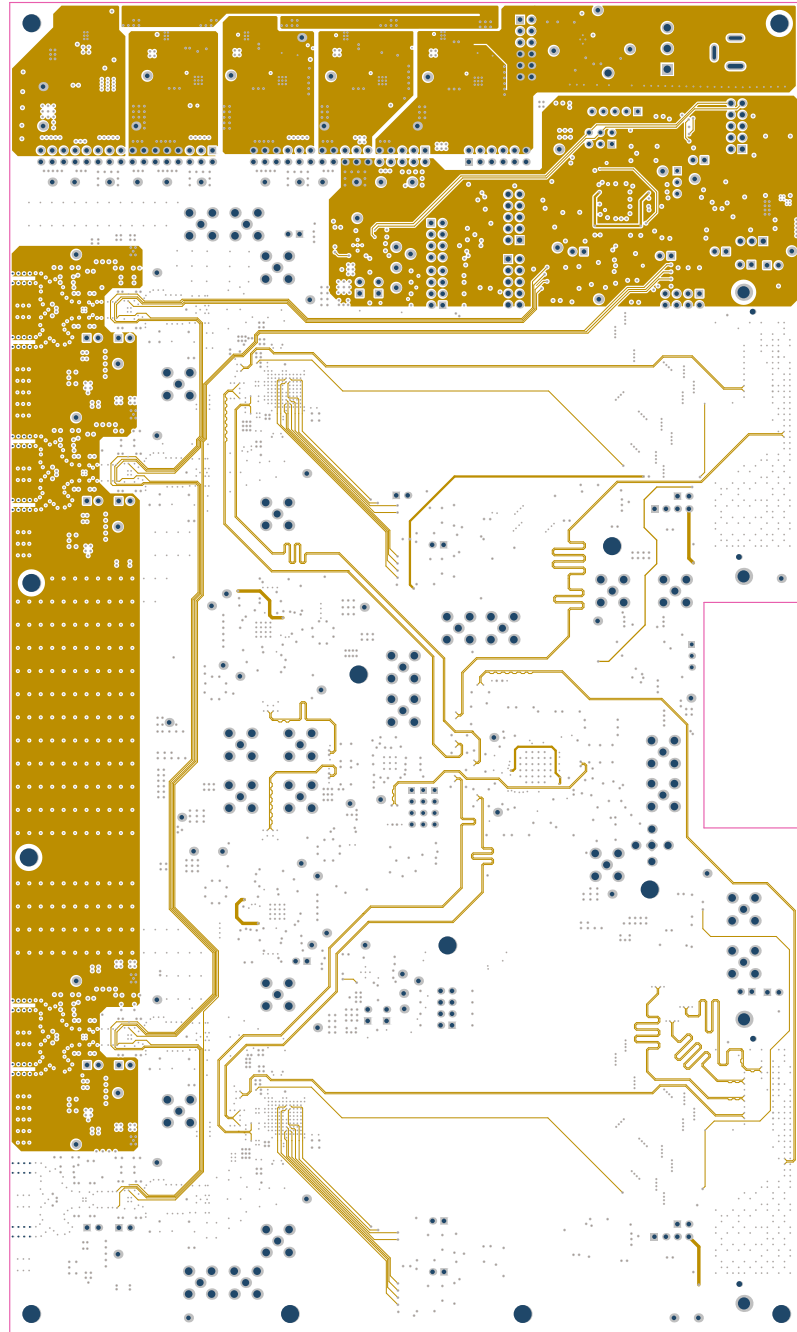


ALL ARTWORK VIEWED FROM TOP SIDE	BOARD #: TIDA-010128	REV: 03	SUN REV:
LAYER NAME = L2_GND	TID #: 010128		
PLOT NAME = L2_GND	GENERATED : 5/15/2019 9:36:54 PM	TEXAS INSTRUMENTS	

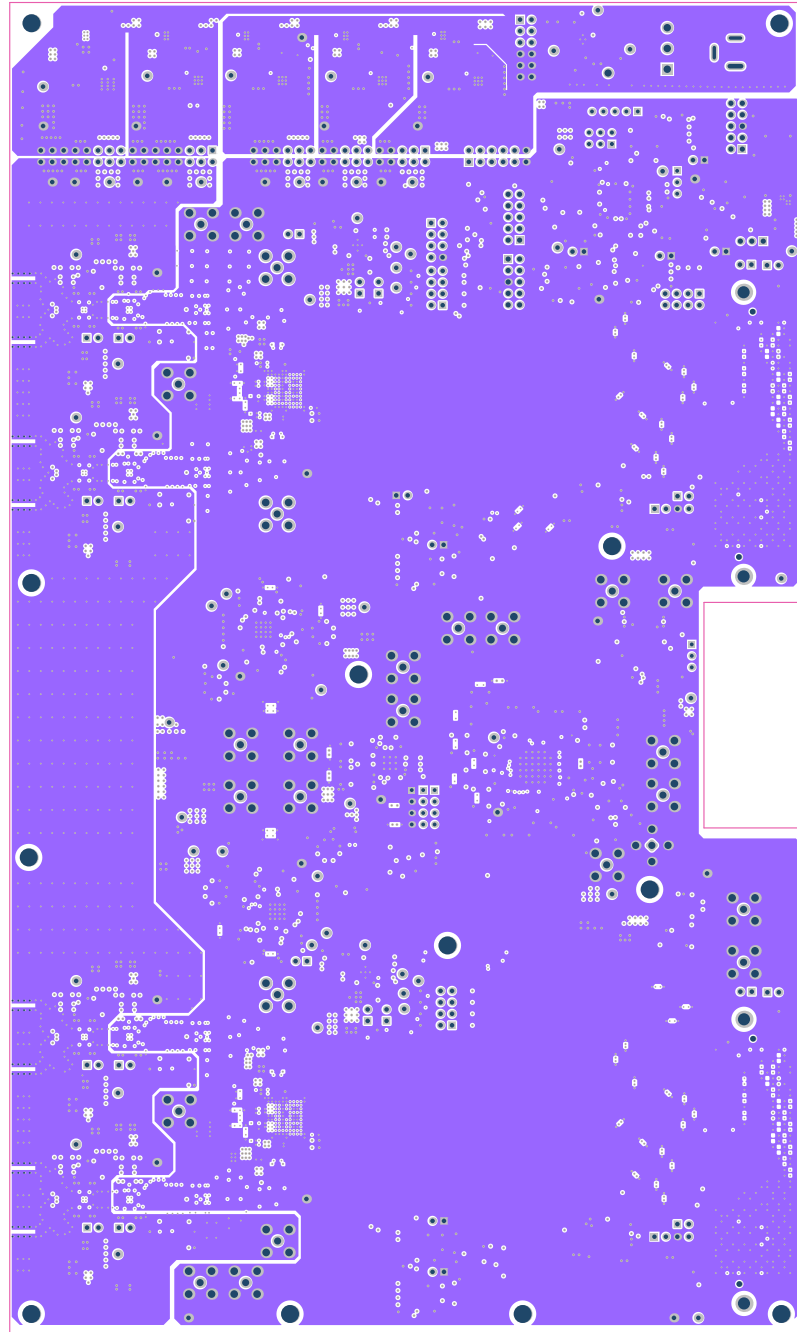


Build on TIDA-01022 PCB

ALL ARTWORK VIEWED FROM TOP SIDE	BOARD #: TIDA-01028	REV: 03	SUN REV:
LAYER NAME = L3_GND	TID #: 01028		
PLOT NAME = L3_GND	GENERATED : 5/15/2019 9:36:55 PM	TEXAS INSTRUMENTS	

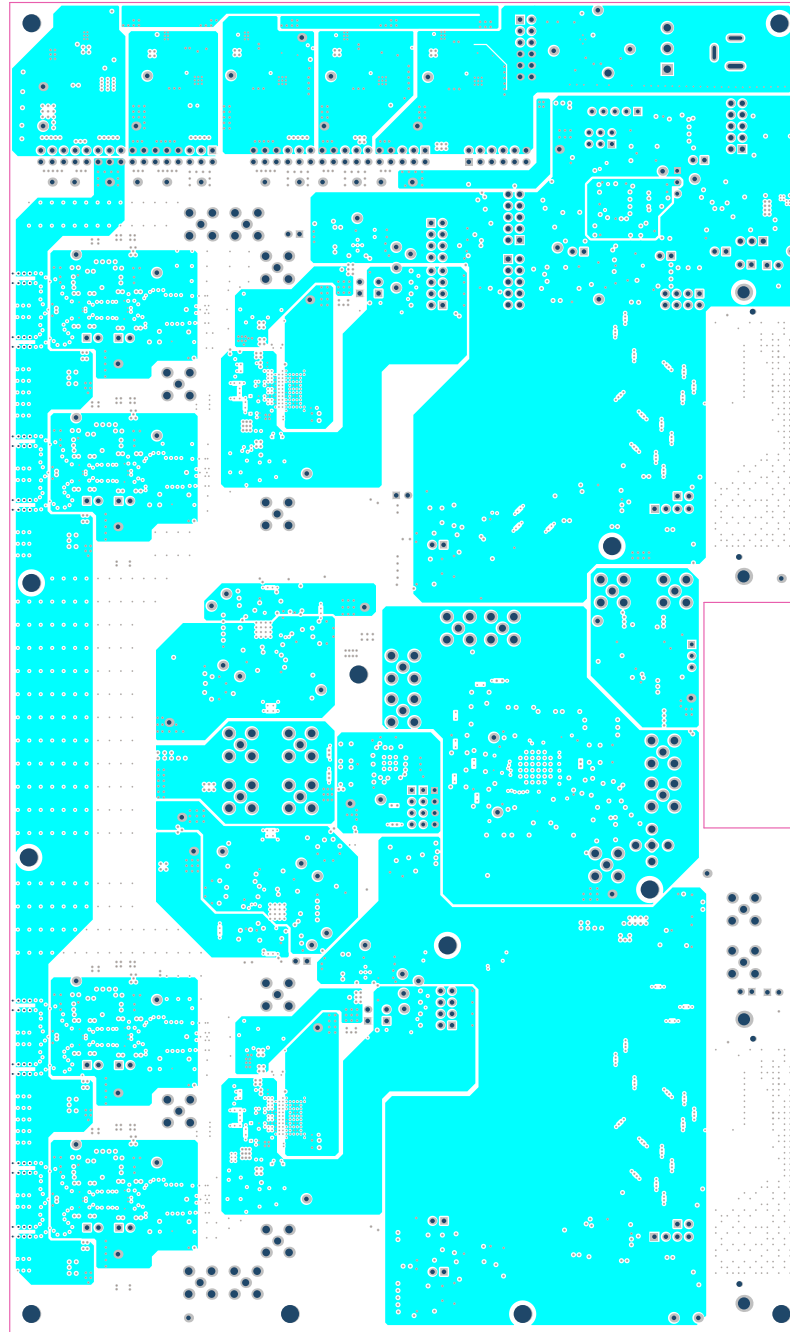


ALL ARTWORK VIEWED FROM TOP SIDE	BOARD #: TIDA-010128	REV: c3	SUN REV:
LAYER NAME = L4_Signal Layer 1	TID #: 010128		
PLOT NAME = L4_Signal Layer 1	GENERATED : 5/15/2019 9:36:56 PM	TEXAS INSTRUMENTS	

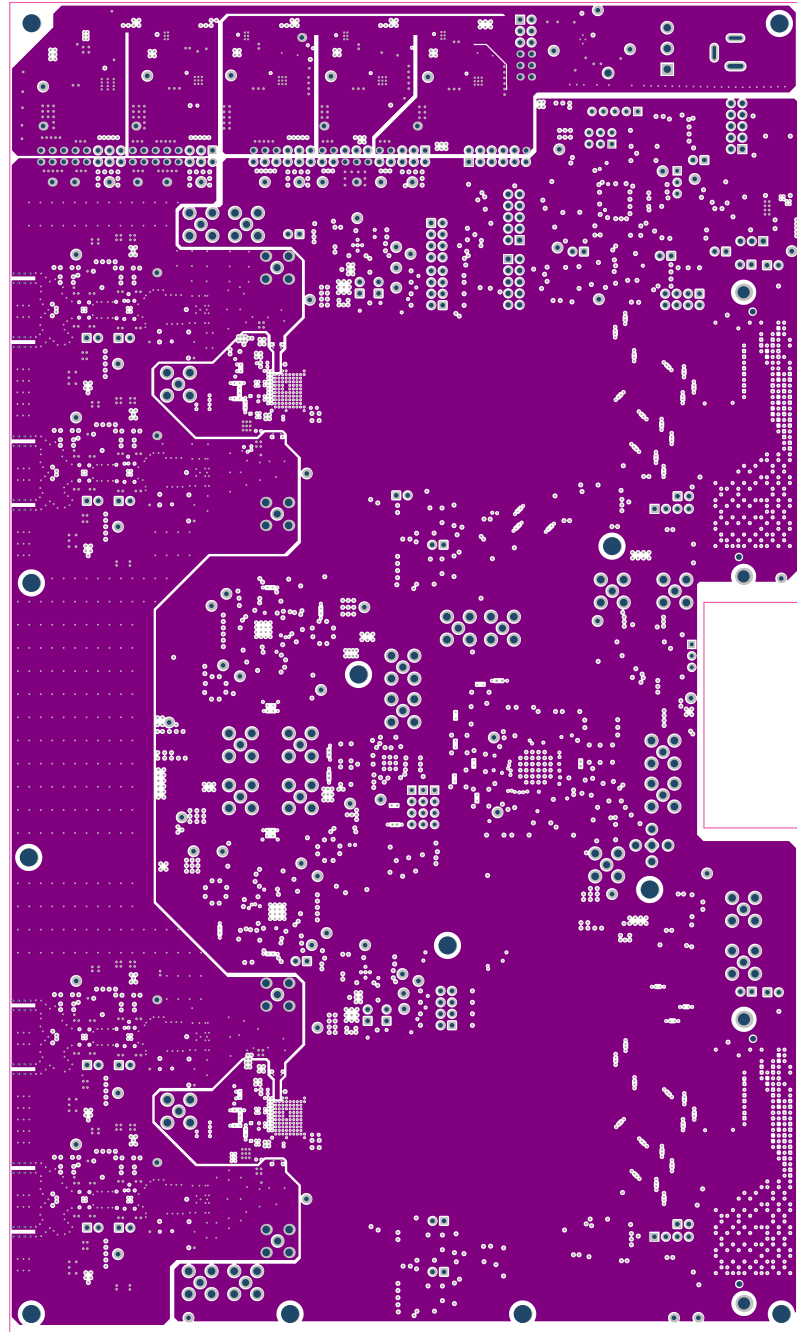


ALL ARTWORK VIEWED FROM TOP SIDE	BOARD #: TIDA-010128	REV: 03	SUN REV:
LAYER NAME = L5_GND	TID #: 010128		
PLOT NAME = L5_GND	GENERATED : 5/15/2019 9:36:57 PM		TEXAS INSTRUMENTS

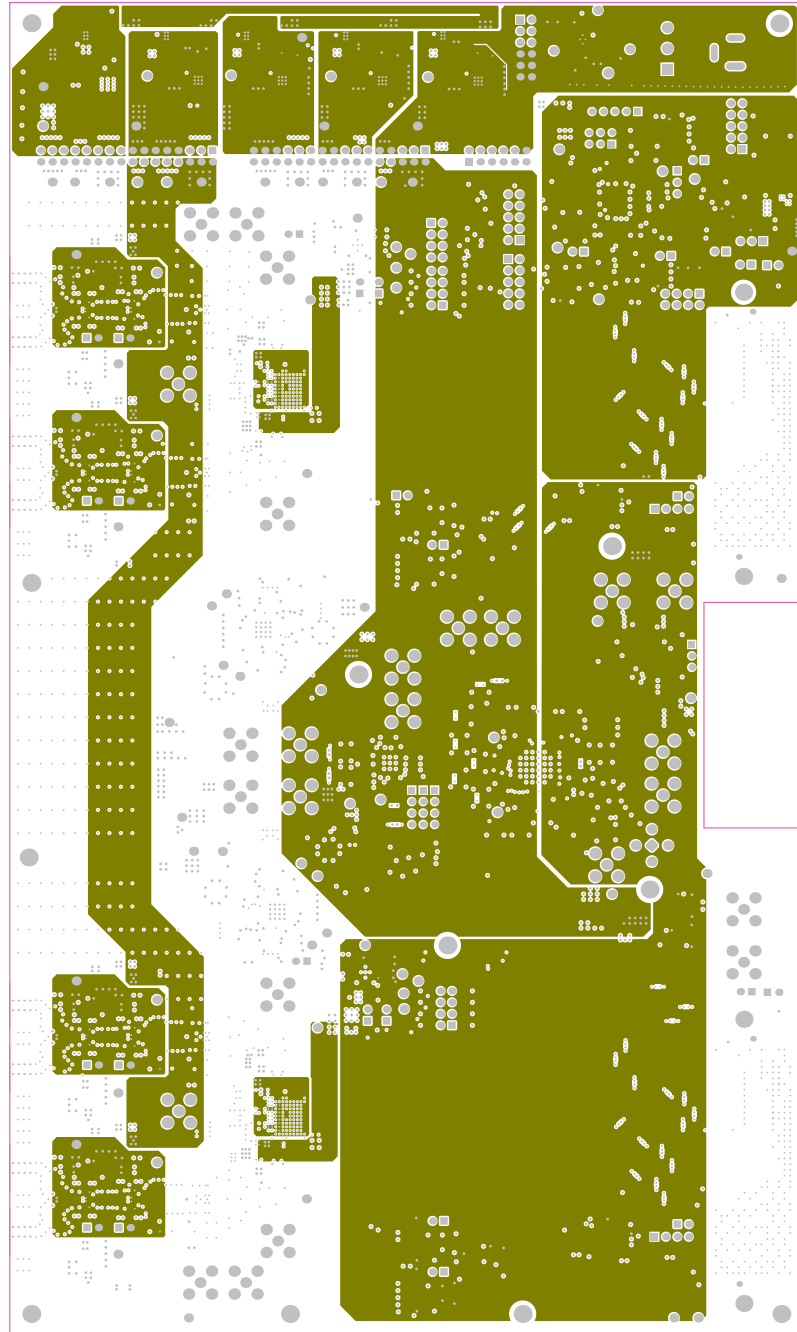




ALL ARTWORK VIEWED FROM TOP SIDE	BOARD #: TIDA-010128	REV: 03	SUN REV:
LAYER NAME = L6_PWR	TID #: 010128		
PLOT NAME = L6_PWR	GENERATED : 5/15/2019 9:36:58 PM	TEXAS INSTRUMENTS	

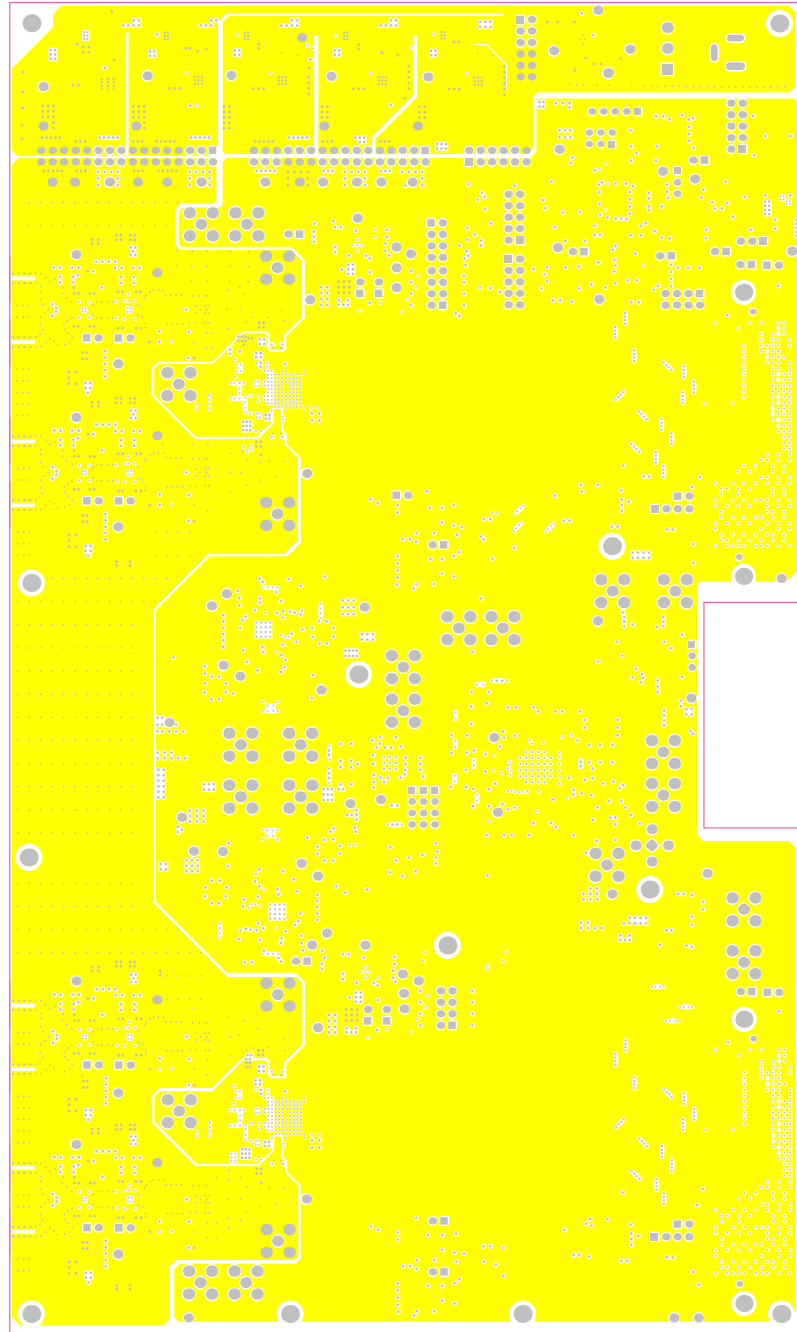


ALL ARTWORK VIEWED FROM TOP SIDE	BOARD #: TIDA-010128	REV: 03	SUN REV:
LAYER NAME = L7_GND/PLR	TID #: 010128		
PLOT NAME = L7_GND	GENERATED : 5/15/2019 9:36:59 PM		TEXAS INSTRUMENTS



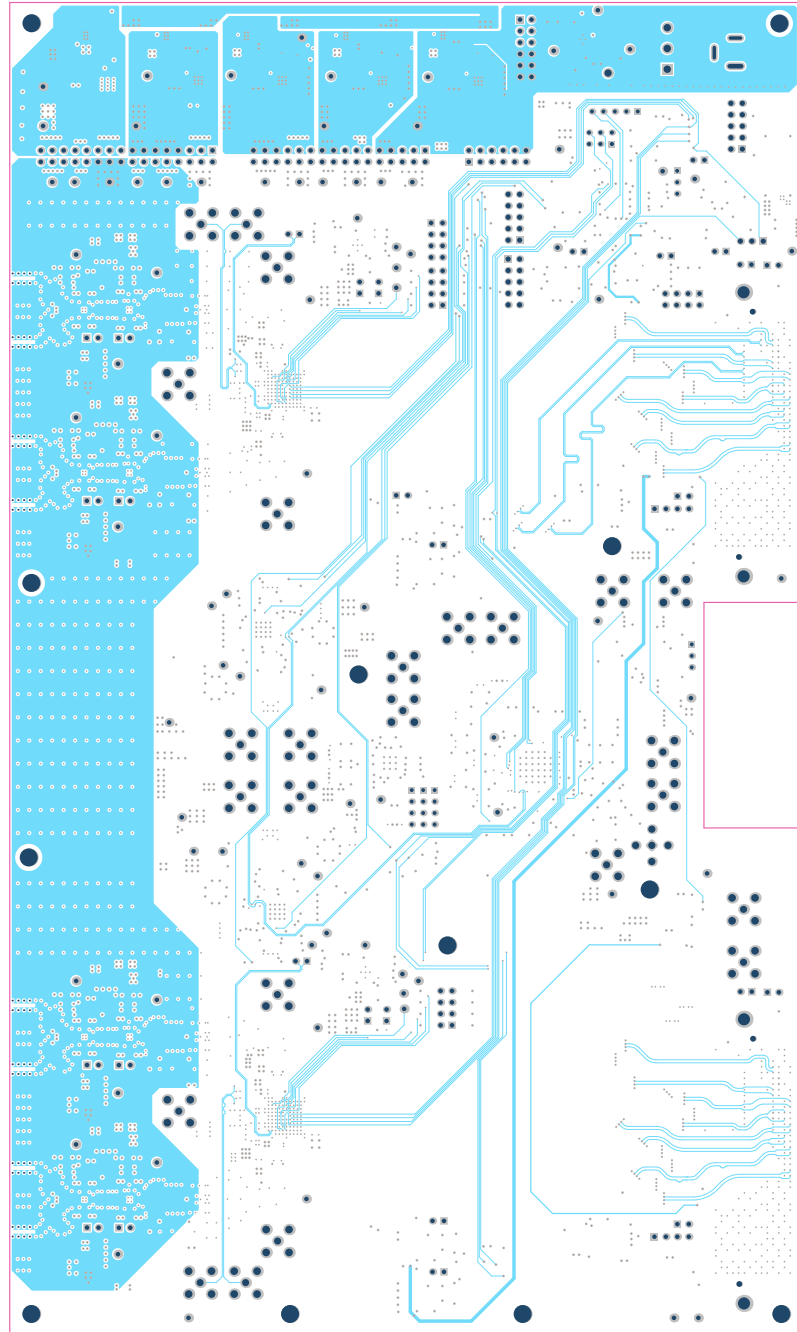
Subs on TIDA-01022 PCB

ALL ARTWORK VIEWED FROM TOP SIDE	BOARD #: TIDA-010128	REV: 03	SUN REV:
LAYER NAME = L8_PWR	TID #: 010128		
PLOT NAME = L8_PWR	GENERATED : 5/15/2019 9:37:00 PM	TEXAS INSTRUMENTS	

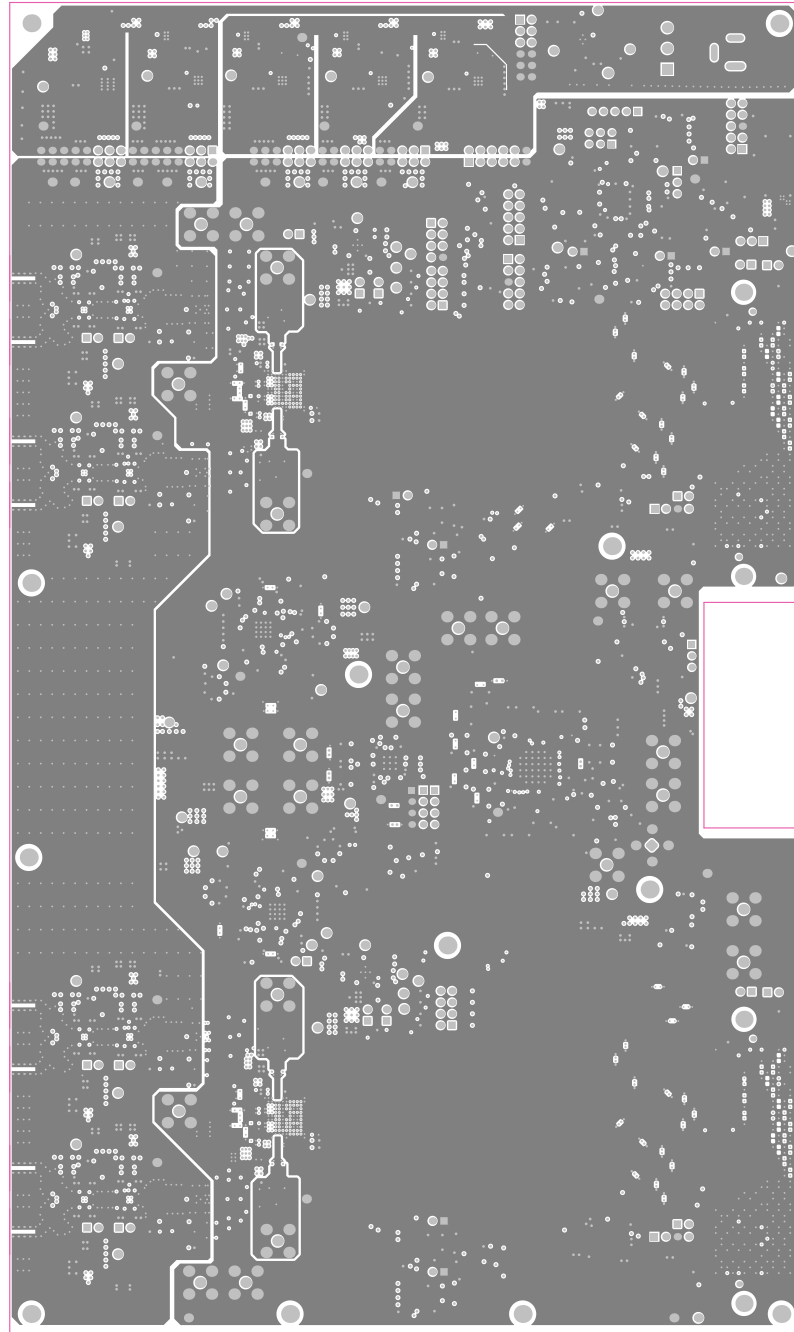


Subs on TIDA-01022 PCB

ALL ARTWORK VIEWED FROM TOP SIDE	BOARD #: TIDA-010128	REV: 03	SUN REV:
LAYER NAME = LS_GND/PWR	TID #: 010128		
PLOT NAME = LS_GND	GENERATED : 5/15/2019 9:37:02 PM	TEXAS INSTRUMENTS	

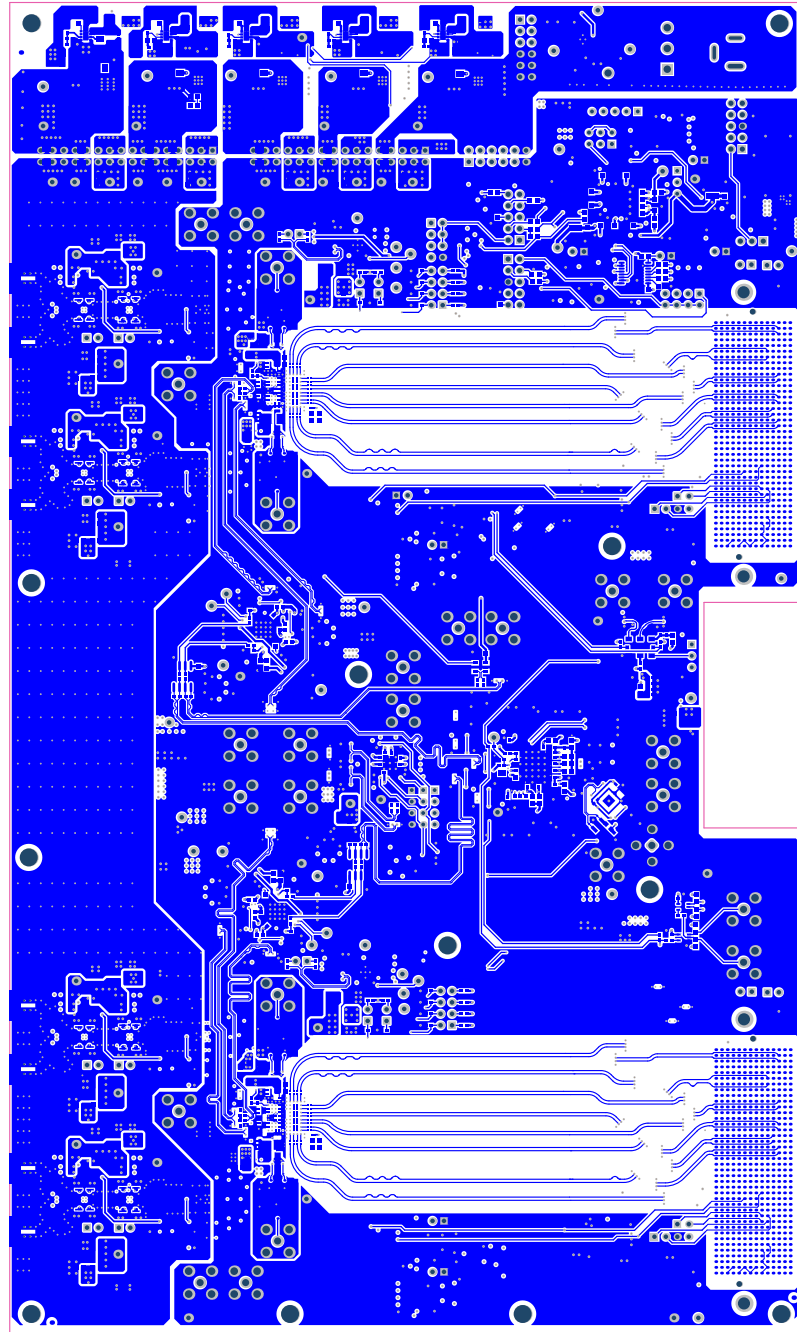


ALL ARTWORK VIEWED FROM TOP SIDE	BOARD #: TIDA-010128	REV: 03	SUN REV:
LAYER NAME = L10_Signal_Layer_2	TID #: 010128		
PLOT NAME = L10_Signal_Layer_2	GENERATED : 5/15/2019 9:37:03 PM	TEXAS INSTRUMENTS	

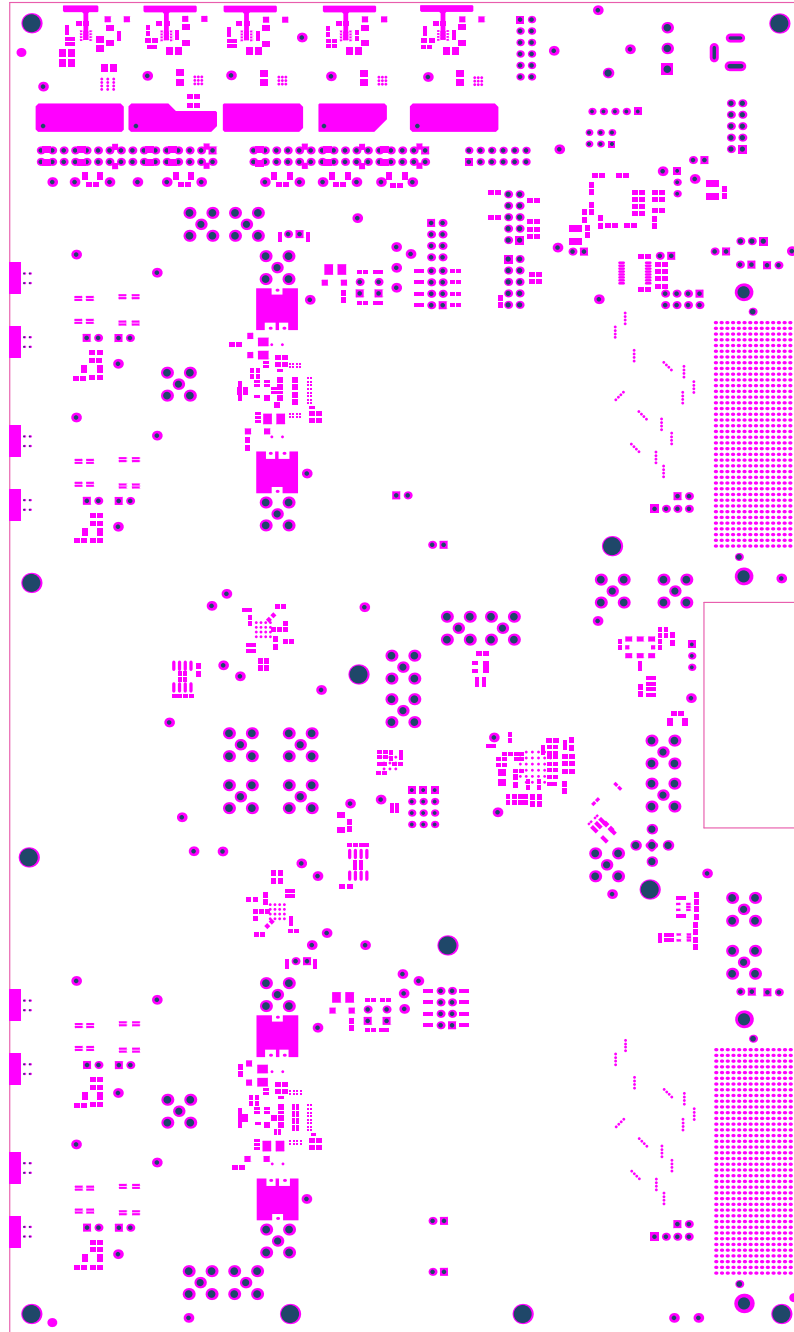


Subs on TIDA-01022 PCB

ALL ARTWORK VIEWED FROM TOP SIDE	BOARD #: TIDA-010128	REV: 03	SUN REV:
LAYER NAME = L11_GND	TID #: 010128		
PLOT NAME = L11_GND	GENERATED : 5/15/2019 9:37:04 PM		TEXAS INSTRUMENTS

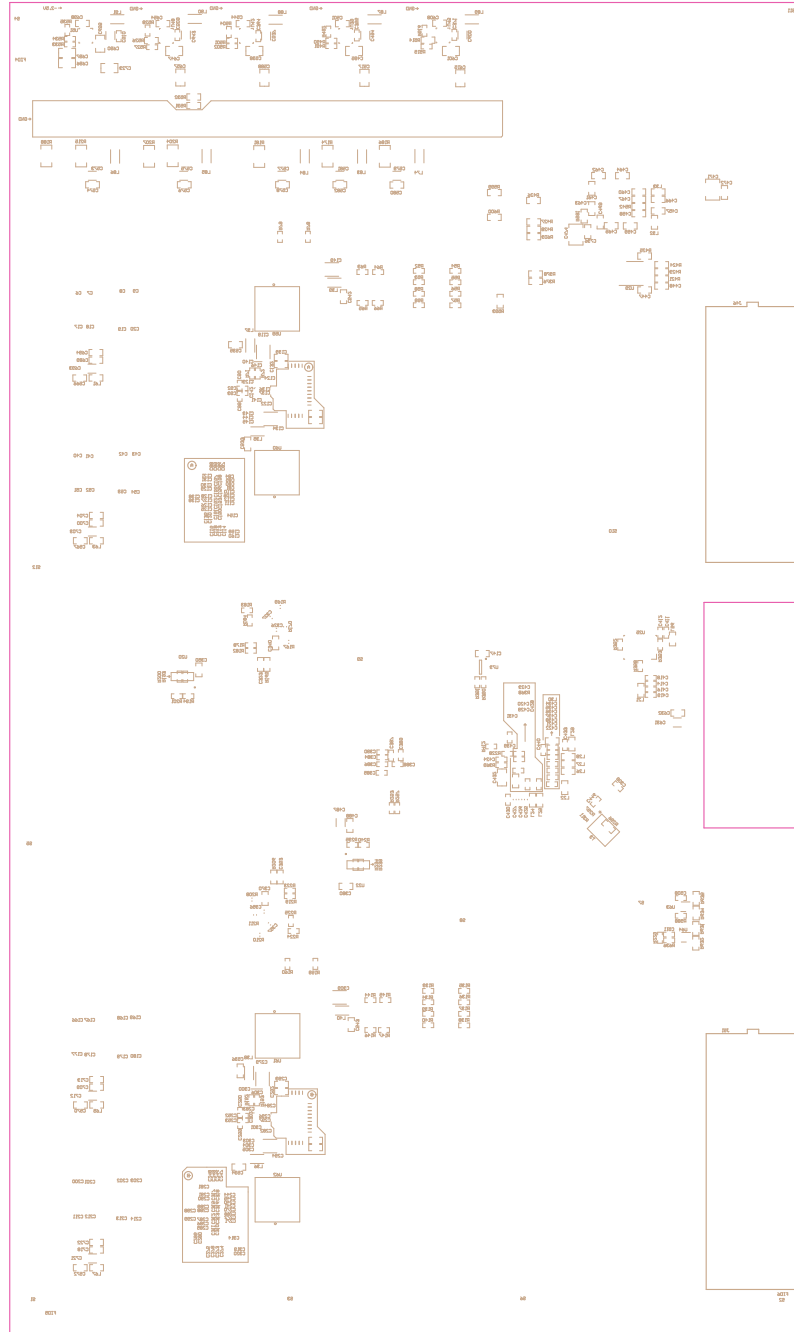


ALL ARTWORK VIEWED FROM TOP SIDE	BOARD #: TIDA-010128	REV: c3	SUN REV:
LAYER NAME = L12_Bottom Layer	TID #: 010128		
PLOT NAME = L12_Bottom Layer	GENERATED : 5/15/2019 9:37:05 PM		TEXAS INSTRUMENTS



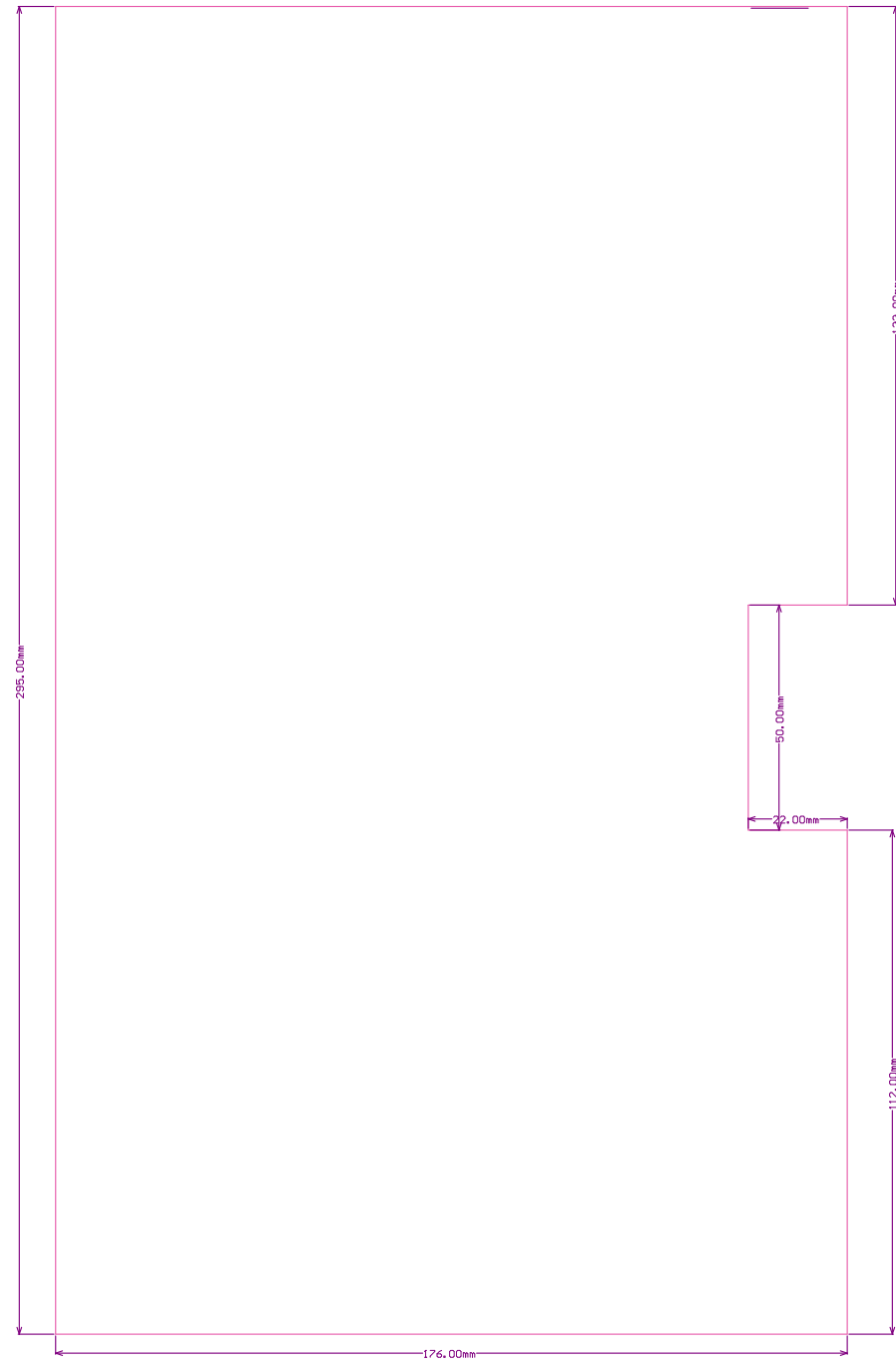
ALL ARTWORK VIEWED FROM TOP SIDE	BOARD #: TIDA-010128	REV: 03	SUN REV:
LAYER NAME = BOTTOM SOLDER	TID #: 010128		
PLOT NAME = Bottom Solder Mask	GENERATED : 5/15/2019 9:37:07 PM	TEXAS INSTRUMENTS	





ALL ARTWORK VIEWED FROM TOP SIDE	BOARD #: TIDA-010128	REV: 03	SUN REV:
LAYER NAME = BOTTOM OVERLAY	TID #: 010128		
PLOT NAME = Bottom Overlay	GENERATED : 5/15/2019 9:37:08 PM	TEXAS INSTRUMENTS	





ALL ARTWORK VIEWED FROM TOP SIDE	BOARD #: TIDA-010128	REV: 03	SUN REV:
LAYER NAME =	TID #: 010128		
PLOT NAME = Board Dimensions	GENERATED : 5/15/2019 9:37:18 PM	TEXAS INSTRUMENTS	

## IMPORTANT NOTICE AND DISCLAIMER

TI PROVIDES TECHNICAL AND RELIABILITY DATA (INCLUDING DATASHEETS), DESIGN RESOURCES (INCLUDING REFERENCE DESIGNS), APPLICATION OR OTHER DESIGN ADVICE, WEB TOOLS, SAFETY INFORMATION, AND OTHER RESOURCES "AS IS" AND WITH ALL FAULTS, AND DISCLAIMS ALL WARRANTIES, EXPRESS AND IMPLIED, INCLUDING WITHOUT LIMITATION ANY IMPLIED WARRANTIES OF MERCHANTABILITY, FITNESS FOR A PARTICULAR PURPOSE OR NON-INFRINGEMENT OF THIRD PARTY INTELLECTUAL PROPERTY RIGHTS.

These resources are intended for skilled developers designing with TI products. You are solely responsible for (1) selecting the appropriate TI products for your application, (2) designing, validating and testing your application, and (3) ensuring your application meets applicable standards, and any other safety, security, or other requirements. These resources are subject to change without notice. TI grants you permission to use these resources only for development of an application that uses the TI products described in the resource. Other reproduction and display of these resources is prohibited. No license is granted to any other TI intellectual property right or to any third party intellectual property right. TI disclaims responsibility for, and you will fully indemnify TI and its representatives against, any claims, damages, costs, losses, and liabilities arising out of your use of these resources.

TI's products are provided subject to TI's Terms of Sale ([www.ti.com/legal/termsofsale.html](http://www.ti.com/legal/termsofsale.html)) or other applicable terms available either on [ti.com](http://ti.com) or provided in conjunction with such TI products. TI's provision of these resources does not expand or otherwise alter TI's applicable warranties or warranty disclaimers for TI products.

Mailing Address: Texas Instruments, Post Office Box 655303, Dallas, Texas 75265  
Copyright © 2019, Texas Instruments Incorporated