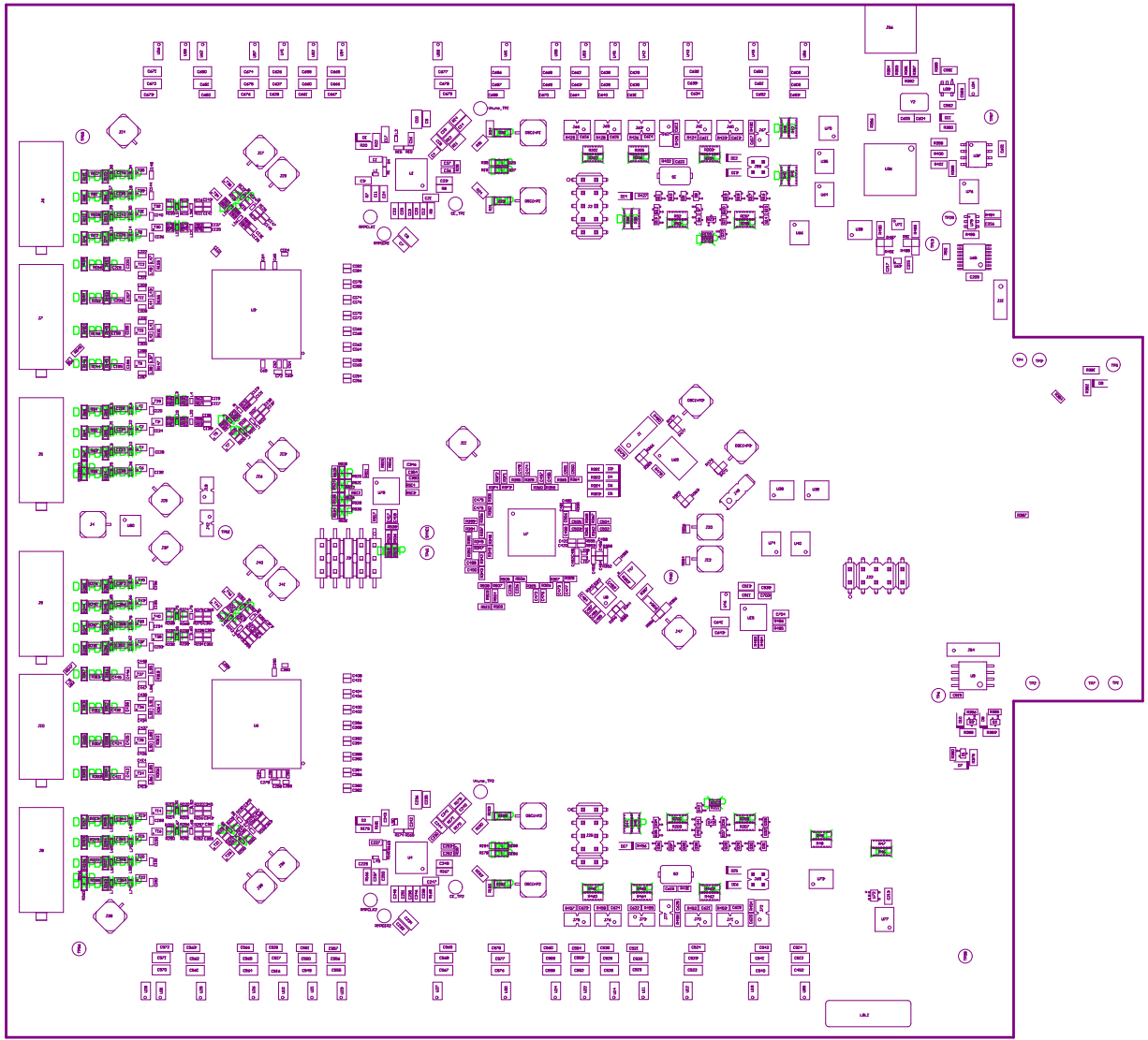
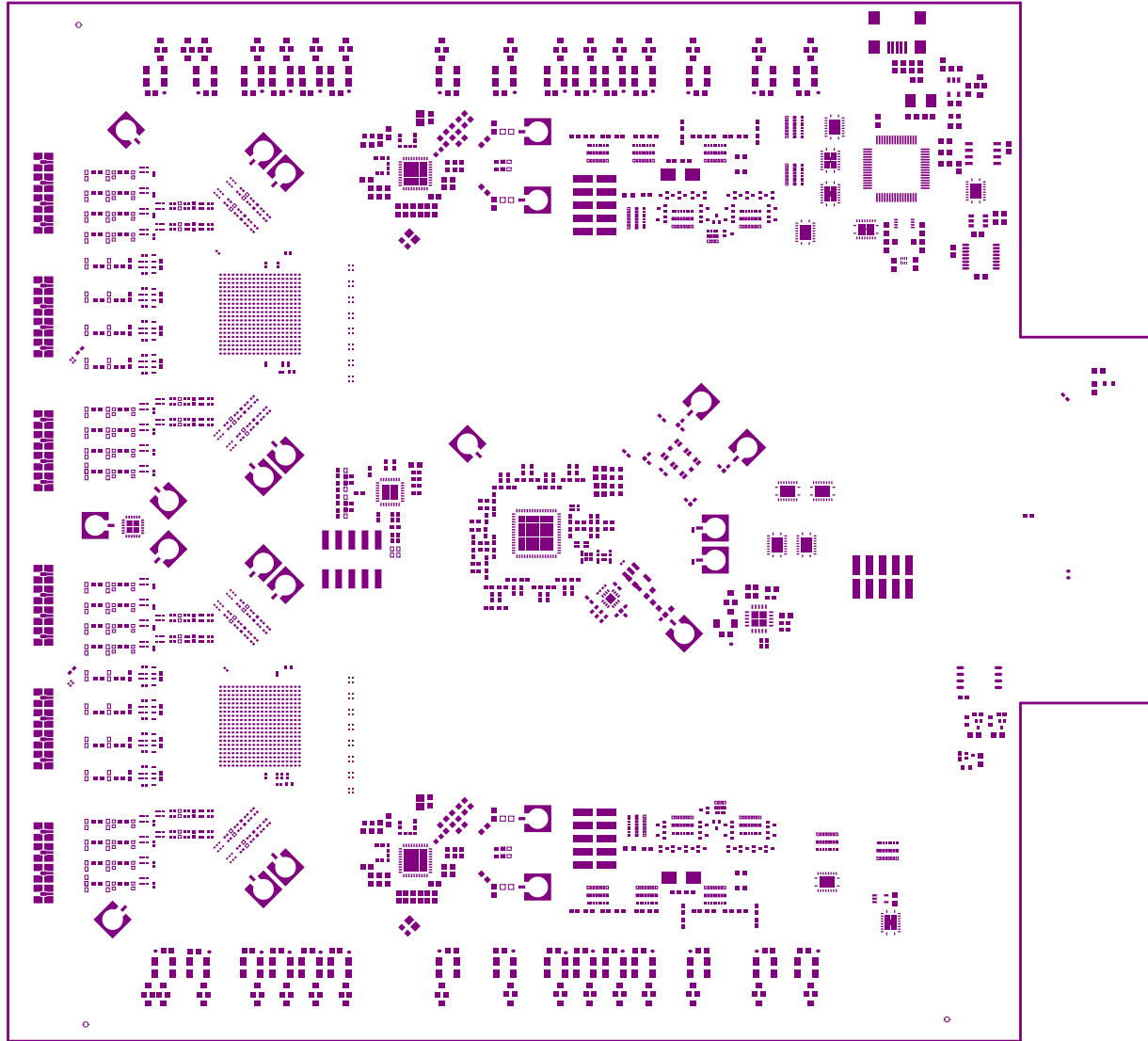


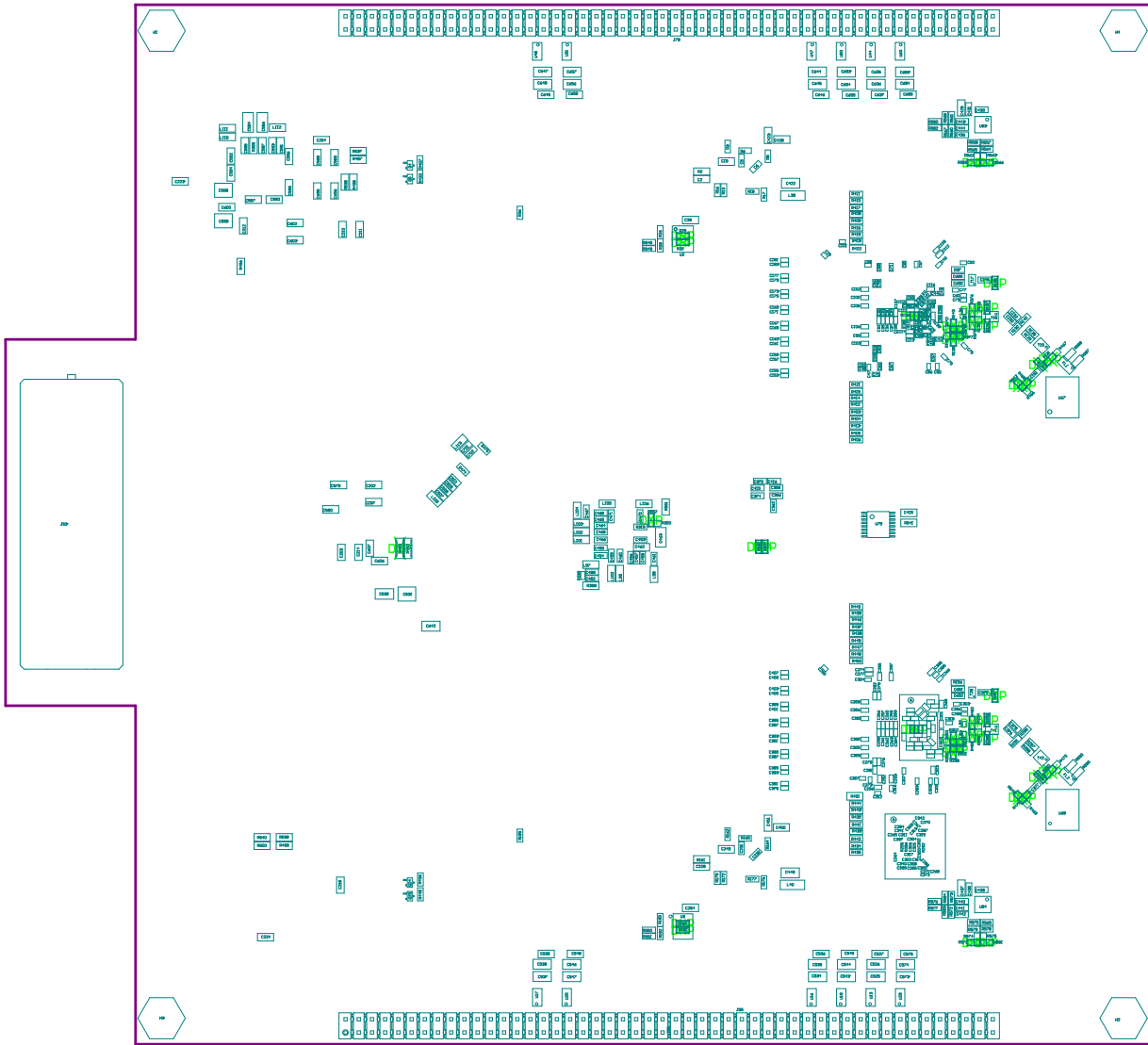
- 202  Model shown in different view than this view. You must be in 3D form. You must be per the Layout Table in the top assembly.
- 203  This assembly, here will show in the Public and associated views
- 204  This assembly, here will show in the Public and associated views
- 205  This assembly, here will show in the Public and associated views



OPPOSITE VIEWED TOP WOULD NOT BE RELEVANT.  
 MODEL'S VIEWERS

FILE VIEWED FROM TOP VIEW	NAME #	ITEM NUMBER	REV.	DATE
USER NAME -	M5 Assembly Top		REV #	0000
PLT NAME -	Top Assembly Drawing	DATEPLOT -	6/29/2025	2:24:26 PM
		SCALE DIMENSIONS		



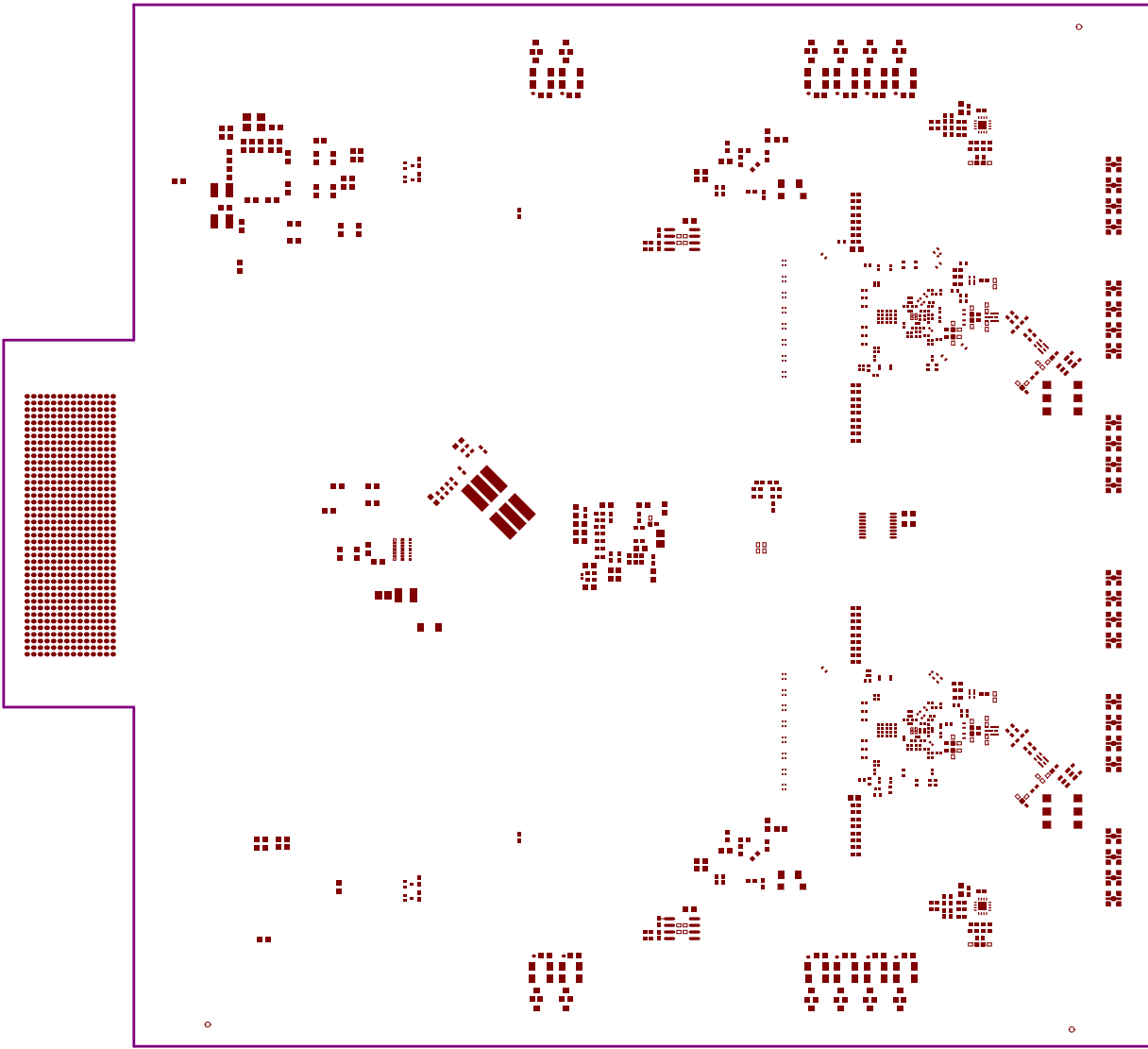


OPPOSITE VIEWED TOP WOULD NOT BE APPLICABLE.

REVISIONS - COMMENTS

REV

FOR ISSUES FROM PREVIOUS EDITION	ISSUE NO.	1004-0000	REV. 02	REV. DATE
LAST DATE -	M6 Assembly Bottom		ISSUE NO.	0000
PLANT NAME -	REVISED BY -	6/20/2005	DESIGNED BY -	SCALE DIMENSIONS



## IMPORTANT NOTICE AND DISCLAIMER

TI PROVIDES TECHNICAL AND RELIABILITY DATA (INCLUDING DATASHEETS), DESIGN RESOURCES (INCLUDING REFERENCE DESIGNS), APPLICATION OR OTHER DESIGN ADVICE, WEB TOOLS, SAFETY INFORMATION, AND OTHER RESOURCES "AS IS" AND WITH ALL FAULTS, AND DISCLAIMS ALL WARRANTIES, EXPRESS AND IMPLIED, INCLUDING WITHOUT LIMITATION ANY IMPLIED WARRANTIES OF MERCHANTABILITY, FITNESS FOR A PARTICULAR PURPOSE OR NON-INFRINGEMENT OF THIRD PARTY INTELLECTUAL PROPERTY RIGHTS.

These resources are intended for skilled developers designing with TI products. You are solely responsible for (1) selecting the appropriate TI products for your application, (2) designing, validating and testing your application, and (3) ensuring your application meets applicable standards, and any other safety, security, or other requirements. These resources are subject to change without notice. TI grants you permission to use these resources only for development of an application that uses the TI products described in the resource. Other reproduction and display of these resources is prohibited. No license is granted to any other TI intellectual property right or to any third party intellectual property right. TI disclaims responsibility for, and you will fully indemnify TI and its representatives against, any claims, damages, costs, losses, and liabilities arising out of your use of these resources.

TI's products are provided subject to TI's Terms of Sale ([www.ti.com/legal/termsofsale.html](http://www.ti.com/legal/termsofsale.html)) or other applicable terms available either on [ti.com](http://ti.com) or provided in conjunction with such TI products. TI's provision of these resources does not expand or otherwise alter TI's applicable warranties or warranty disclaimers for TI products.

Mailing Address: Texas Instruments, Post Office Box 655303, Dallas, Texas 75265  
Copyright © 2019, Texas Instruments Incorporated