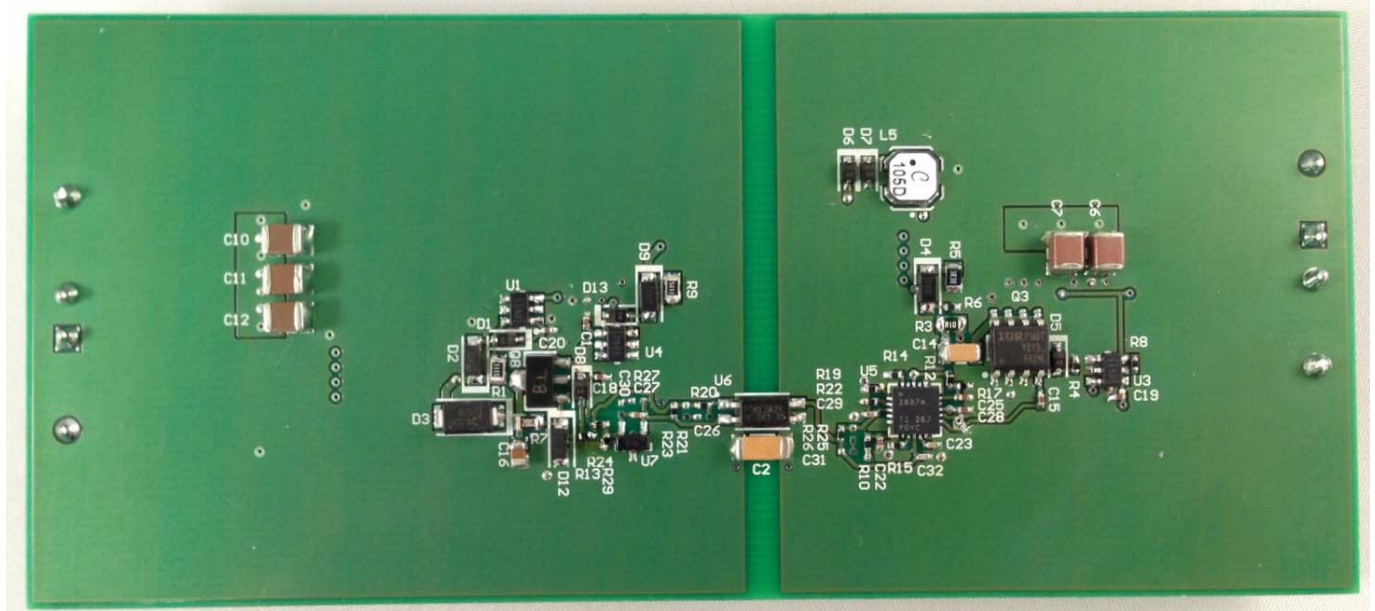
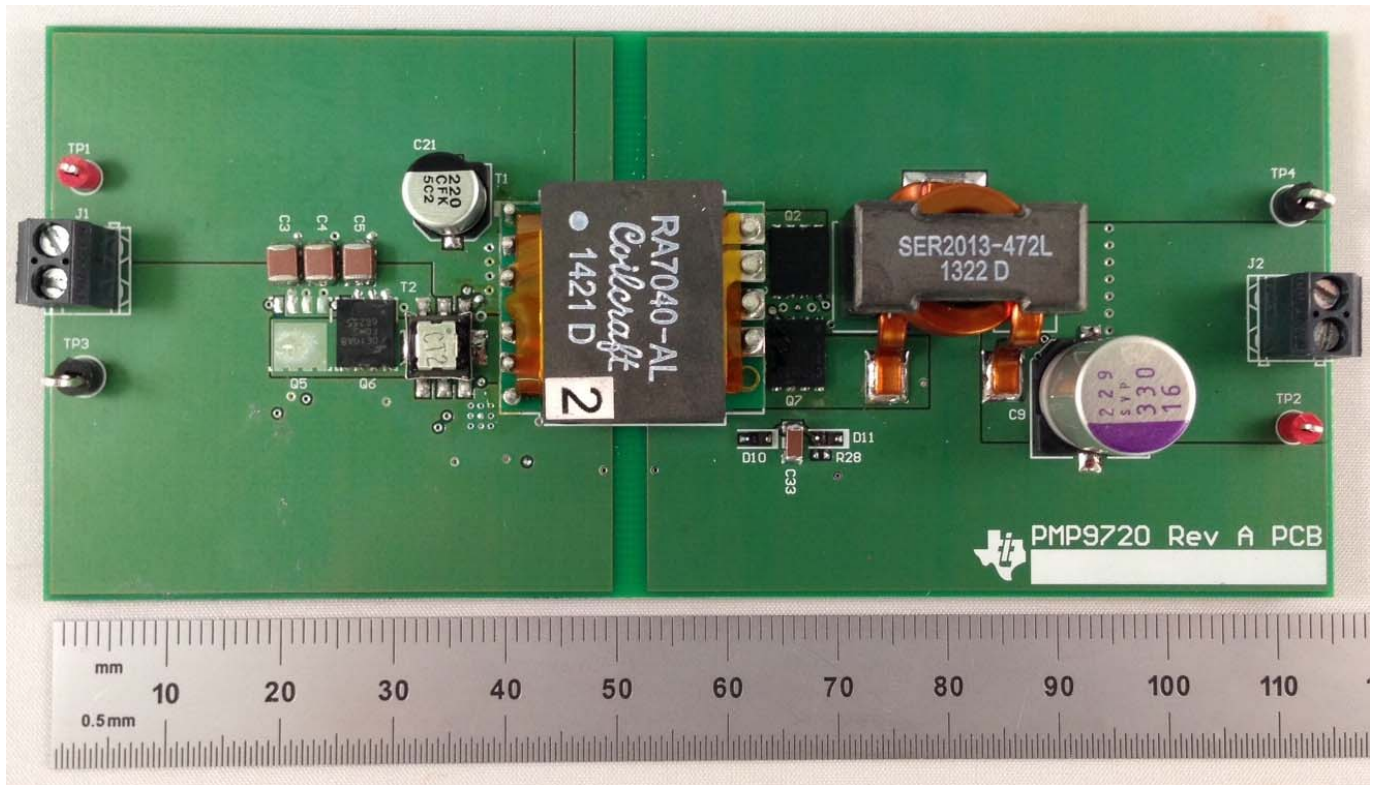
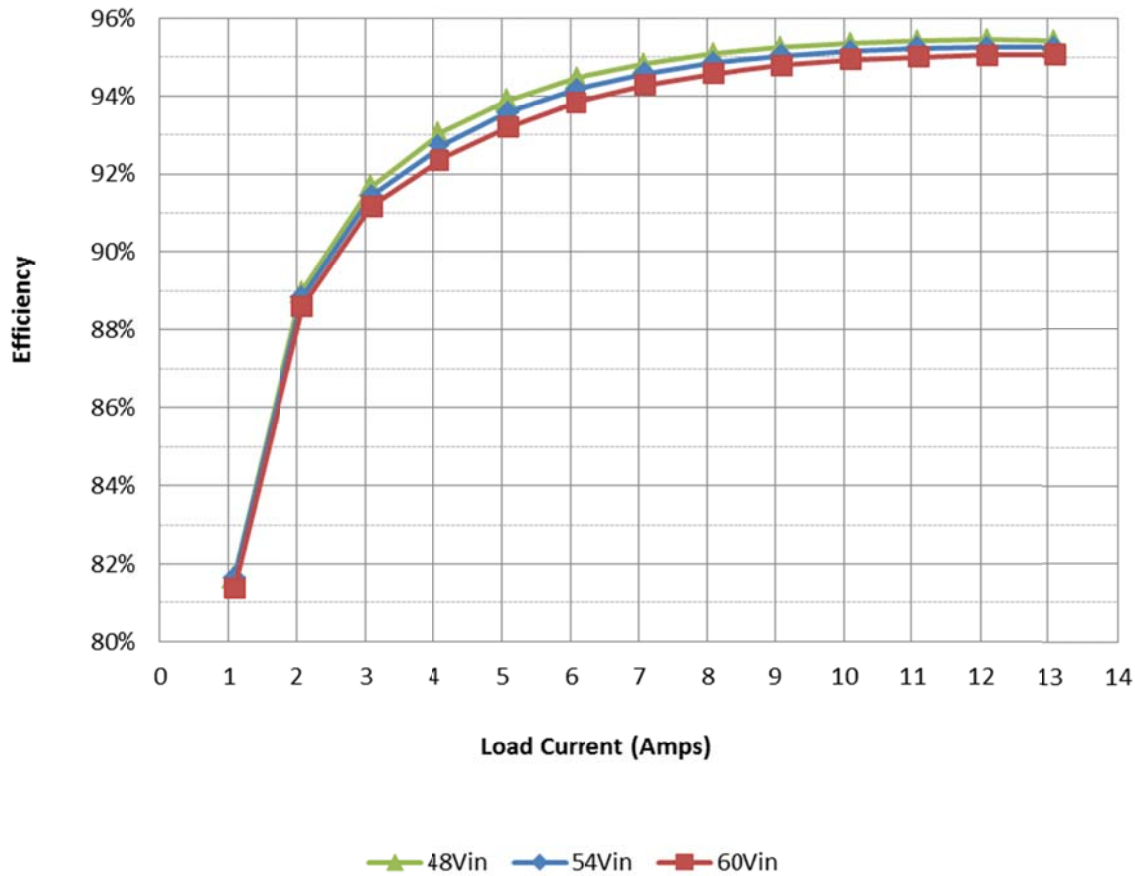


## 1 Photos



## 2 Efficiency



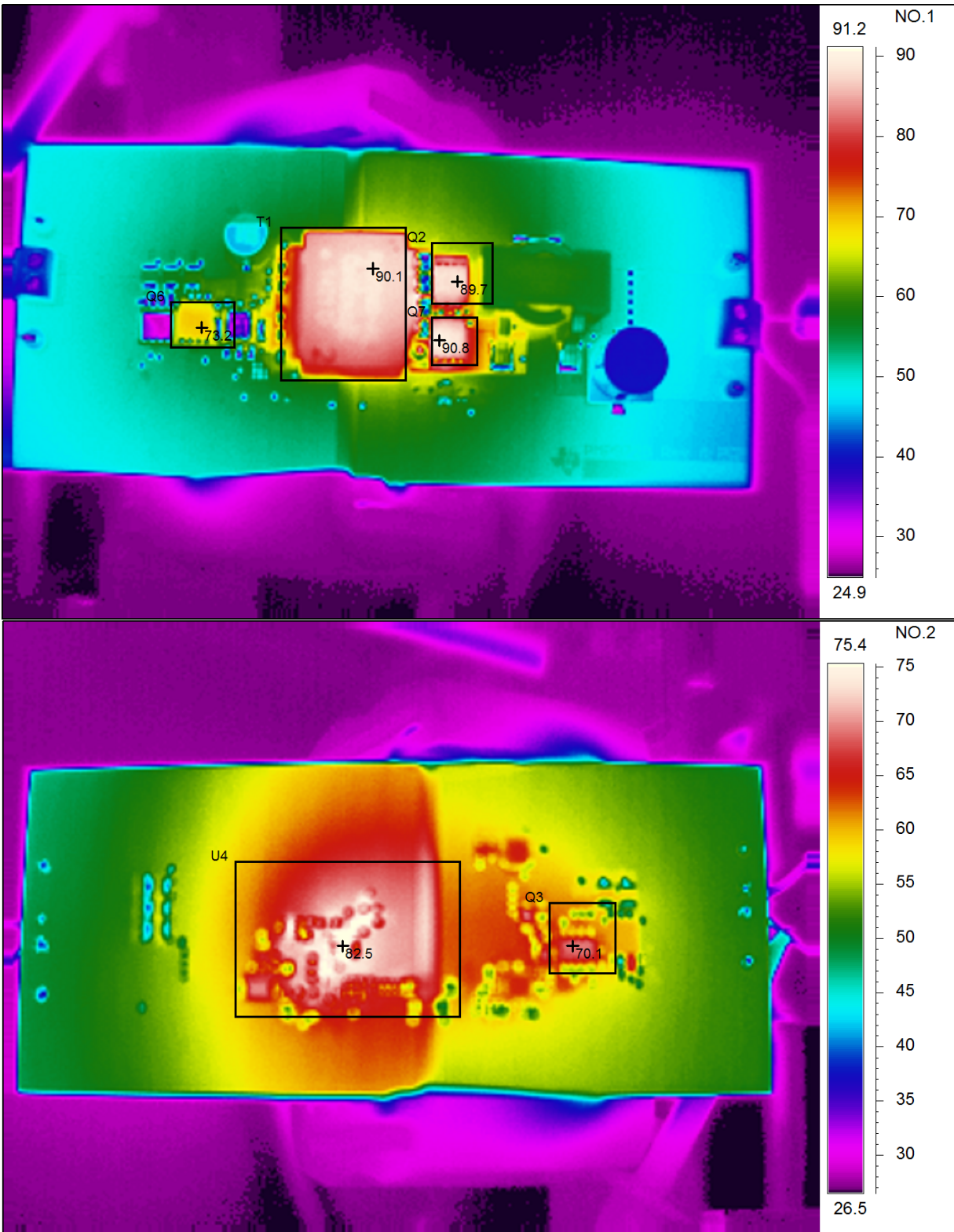
lout	Vout	Vin	lin	Pout	Losses	Efficiency
0.001	12.07	48.0	0.059	0.01	2.823	0.3%
1.074	12.06	48.0	0.331	12.96	2.914	81.6%
2.076	12.06	48.0	0.586	25.04	3.105	89.0%
3.078	12.06	48.0	0.844	37.13	3.369	91.7%
4.079	12.06	48.0	1.102	49.20	3.687	93.0%
5.08	12.06	48.0	1.360	61.29	3.993	93.9%
6.08	12.06	48.0	1.618	73.35	4.309	94.5%
7.09	12.06	48.0	1.878	85.45	4.667	94.8%
8.09	12.06	48.0	2.137	97.54	5.039	95.1%
9.09	12.06	48.0	2.398	109.61	5.473	95.2%
10.09	12.06	48.0	2.659	121.68	5.936	95.3%
11.09	12.06	48.0	2.920	133.73	6.432	95.4%
12.09	12.06	48.0	3.183	145.79	6.973	95.4%
13.09	12.06	48.0	3.448	157.87	7.603	95.4%

Iout	Vout	Vin	Iin	Pout	Losses	Efficiency
0.001	12.07	54.0	0.052	0.01	2.825	0.3%
1.080	12.07	54.0	0.296	13.04	2.935	81.6%
2.082	12.07	54.0	0.524	25.12	3.158	88.8%
3.084	12.07	54.0	0.754	37.21	3.485	91.4%
4.084	12.07	54.0	0.984	49.28	3.877	92.7%
5.09	12.06	54.0	1.215	61.38	4.218	93.6%
6.09	12.06	54.0	1.444	73.43	4.547	94.2%
7.09	12.06	54.0	1.675	85.53	4.904	94.6%
8.09	12.06	54.0	1.906	97.61	5.303	94.8%
9.09	12.06	54.0	2.138	109.69	5.730	95.0%
10.10	12.06	54.0	2.370	121.76	6.202	95.2%
11.10	12.06	54.0	2.602	133.81	6.706	95.2%
12.10	12.06	54.0	2.836	145.88	7.277	95.2%
13.10	12.06	54.0	3.071	157.95	7.882	95.2%

Iout	Vout	Vin	Iin	Pout	Losses	Efficiency
0.001	12.07	60.0	0.048	0.01	2.886	0.3%
1.084	12.07	60.0	0.268	13.09	2.997	81.4%
2.085	12.07	60.0	0.473	25.17	3.235	88.6%
3.088	12.07	60.0	0.681	37.26	3.612	91.2%
4.088	12.07	60.0	0.890	49.33	4.087	92.4%
5.09	12.07	60.0	1.099	61.43	4.484	93.2%
6.09	12.07	60.0	1.305	73.49	4.829	93.8%
7.09	12.07	60.0	1.513	85.59	5.204	94.3%
8.10	12.06	60.0	1.721	97.68	5.604	94.6%
9.10	12.06	60.0	1.930	109.77	6.034	94.8%
10.10	12.06	60.0	2.139	121.85	6.501	94.9%
11.100	12.06	60.0	2.349	133.89	7.047	95.0%
12.101	12.06	60.0	2.559	145.96	7.598	95.1%
13.103	12.06	60.0	2.771	158.03	8.197	95.1%

### 3 Thermal

The thermal images below show the circuit board with a 54V input and 13A load. The ambient temperature was 25C with no forced air flow.

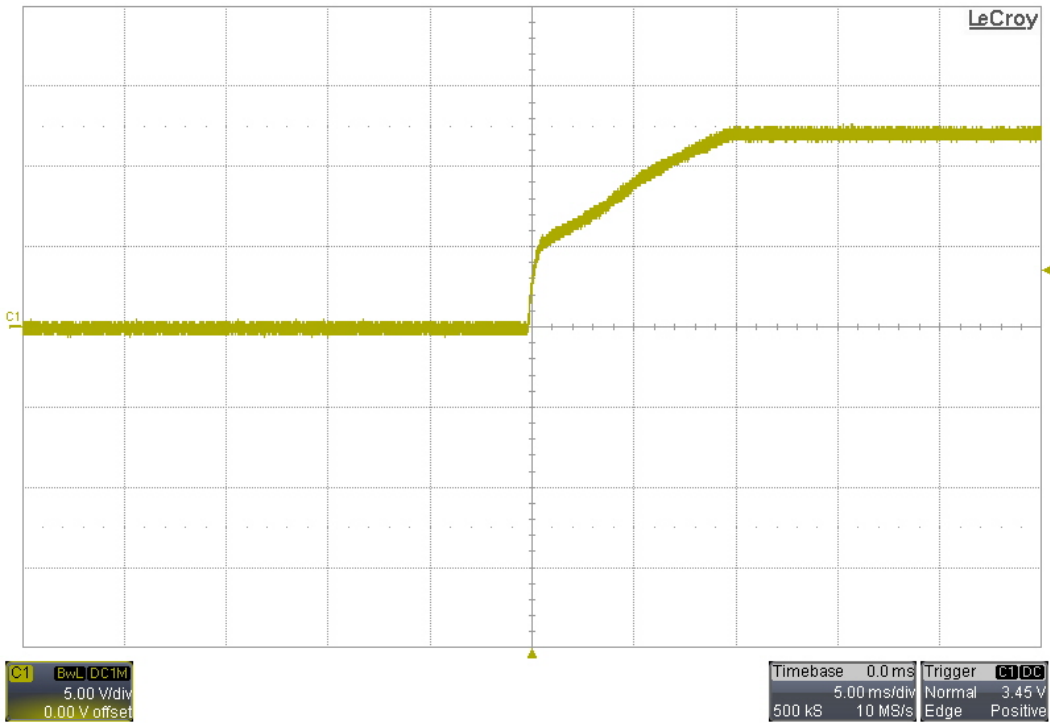


Area analysis	Value
T1Max	90.1°C
Q2Max	89.7°C
Q7Max	90.8°C
Q6 Max	73.2°C

Area analysis	Value
U4Max	82.5°C
Q3 Max	70.1°C

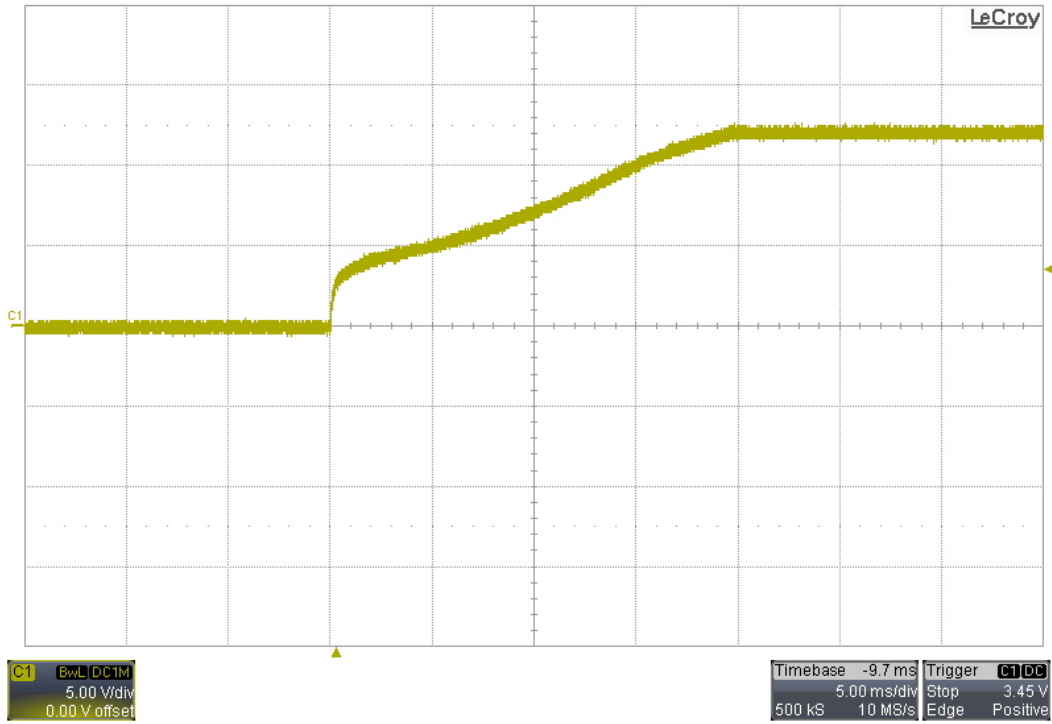
## 4 Startup

### 4.1 54V Input, No Load



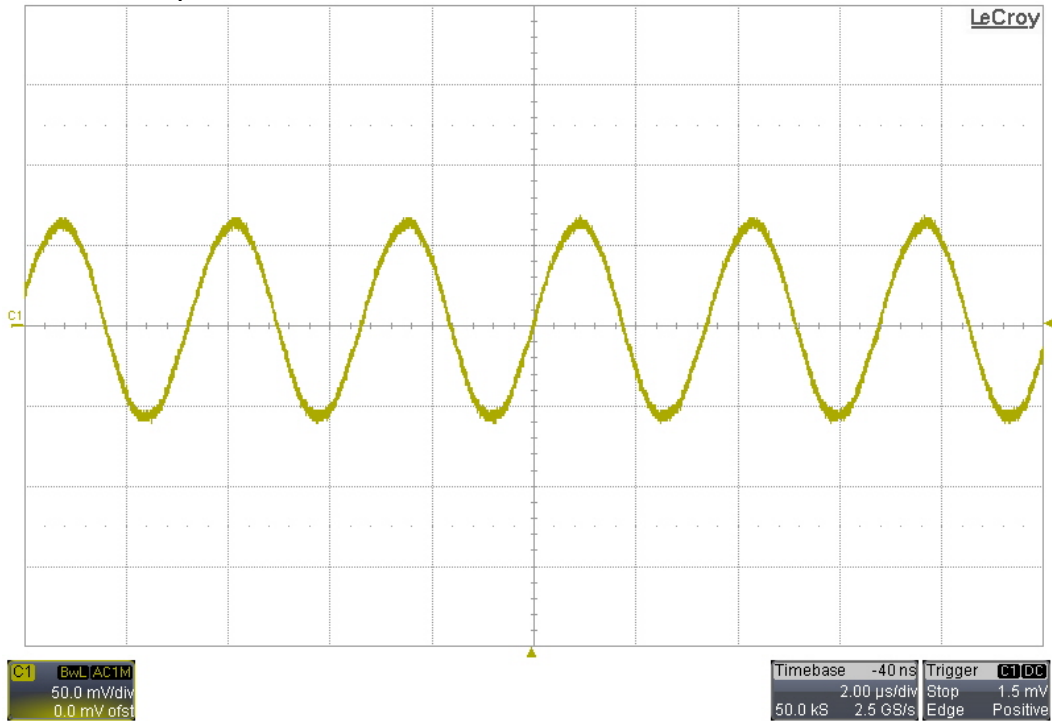


## 4.2 54V Input, 1Ω Load

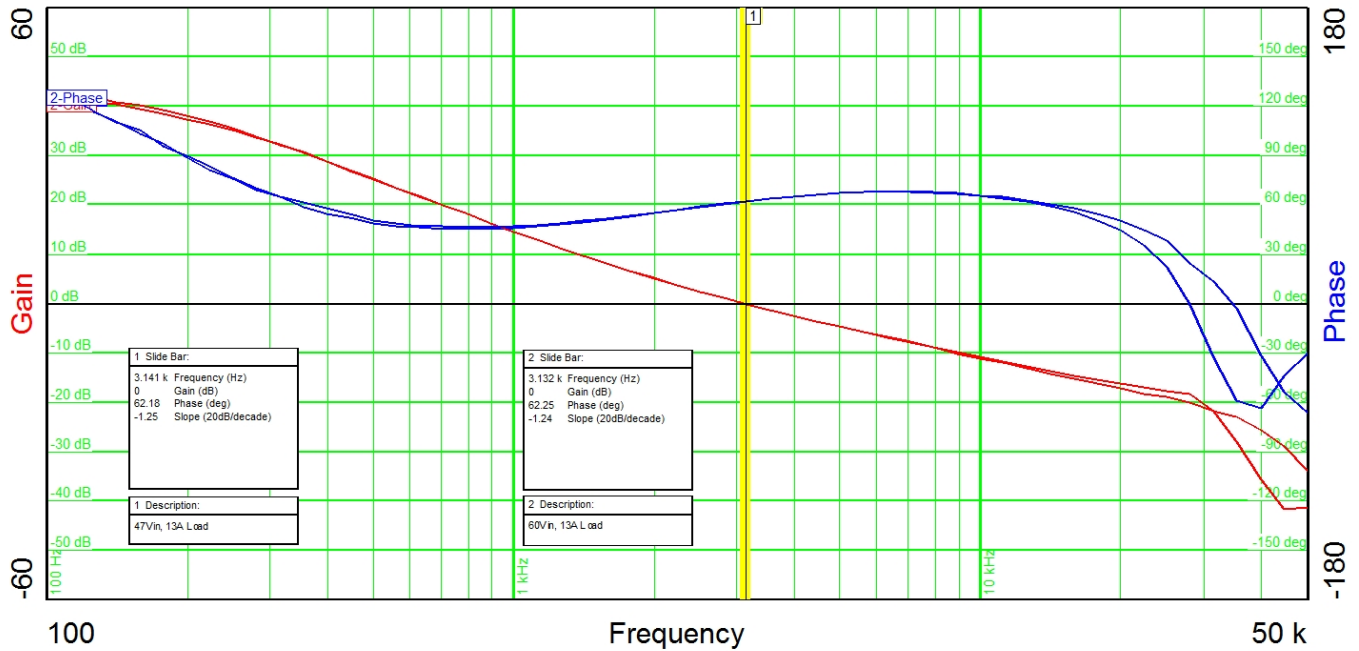


## 5 Output Ripple Voltage

The input was 54V and the output was loaded with 13A.

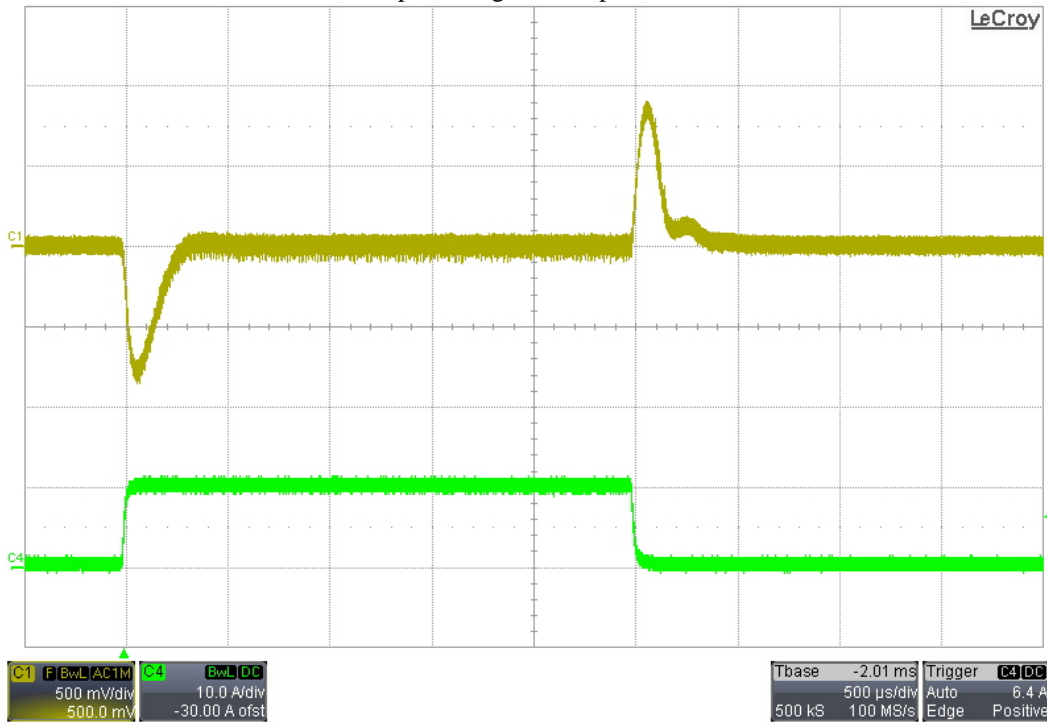


## 6 Frequency Response



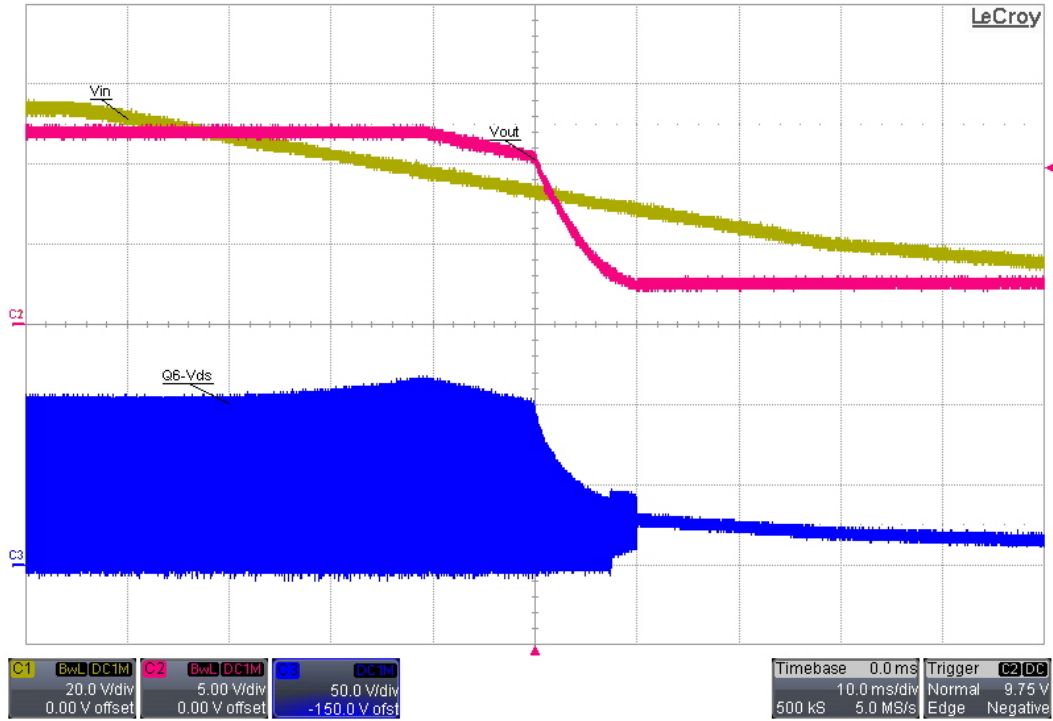
## 7 Load Transients

The input was set to 54V. Channel 1 shows the output voltage, ac coupled. Channel 4 shows the load current.



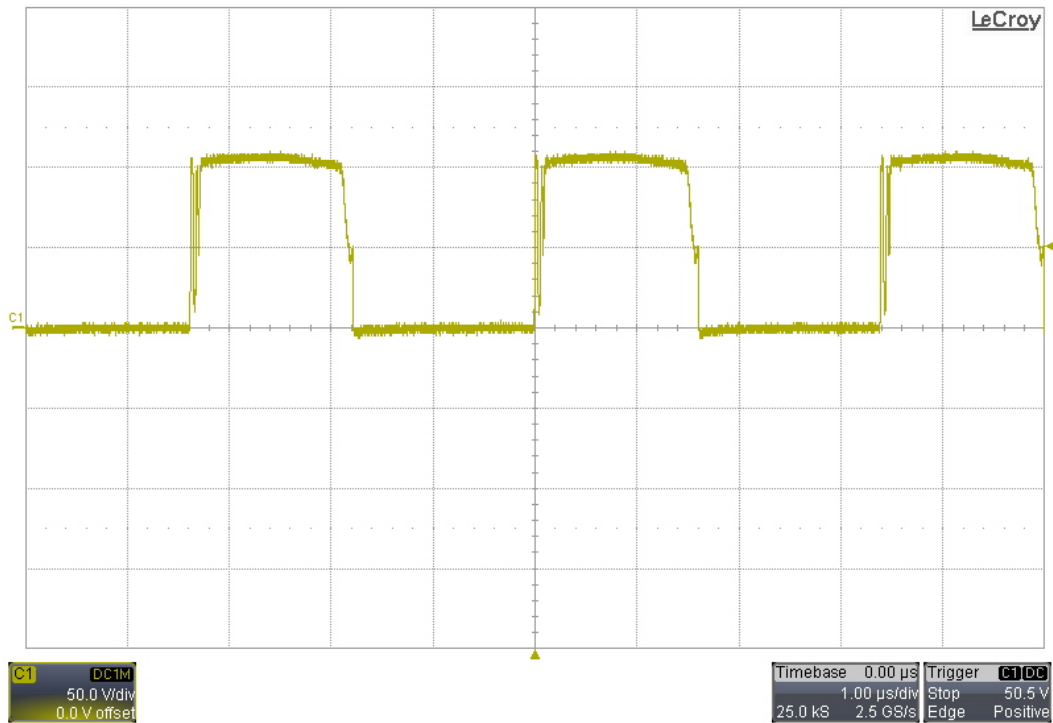
## 8 Shutdown

The output was unloaded.



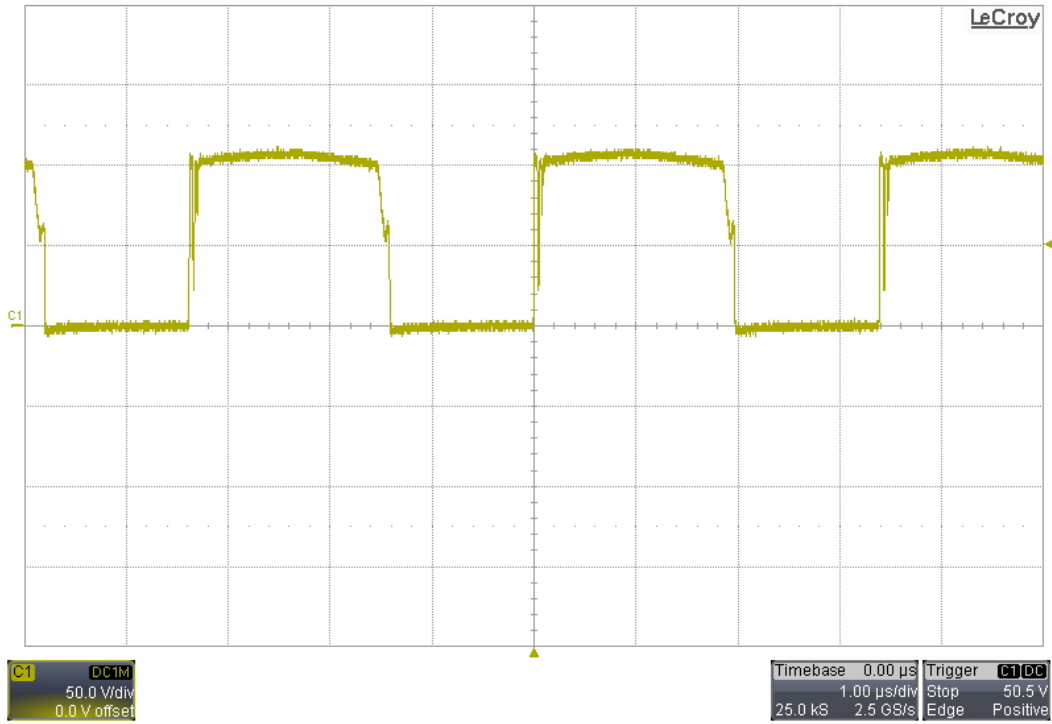
## 9 Switching Waveforms

### 9.1 Primary FET Vds (Q6) – 48Vin, 13A Load

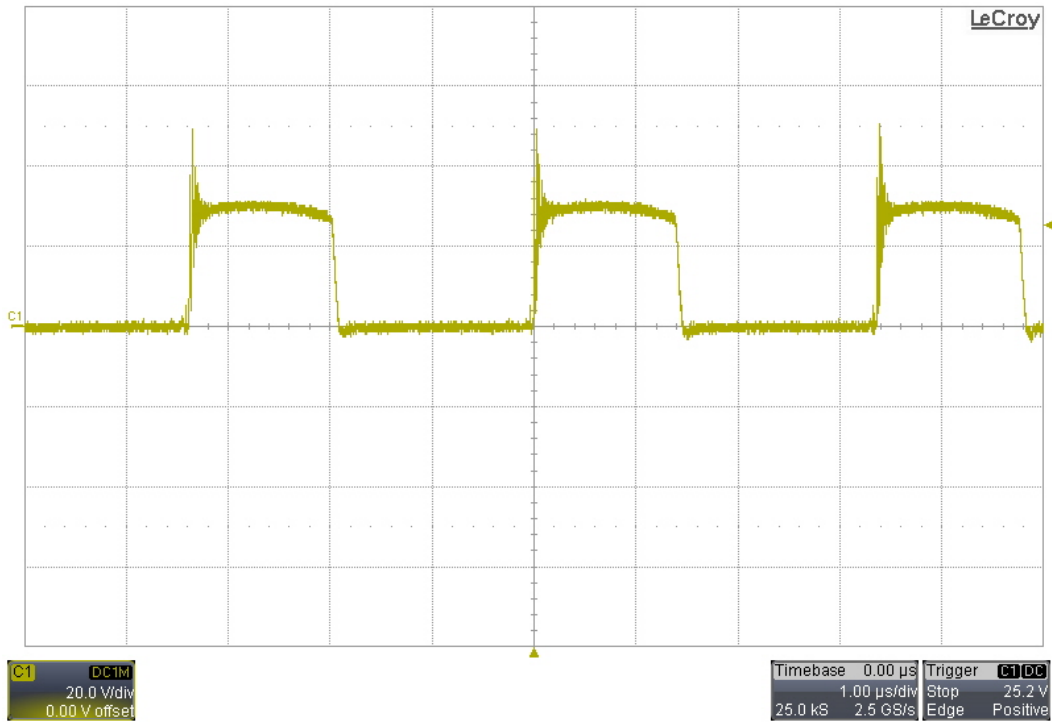




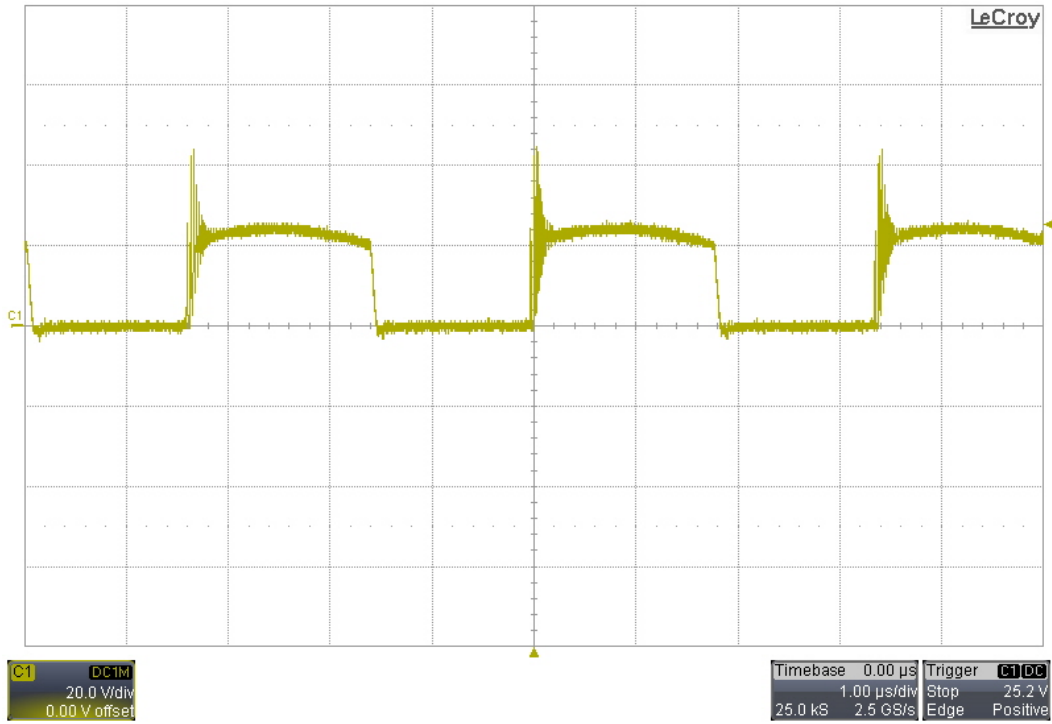
## 9.2 Primary FET Vds (Q6) – 60V<sub>in</sub>, 13A Load



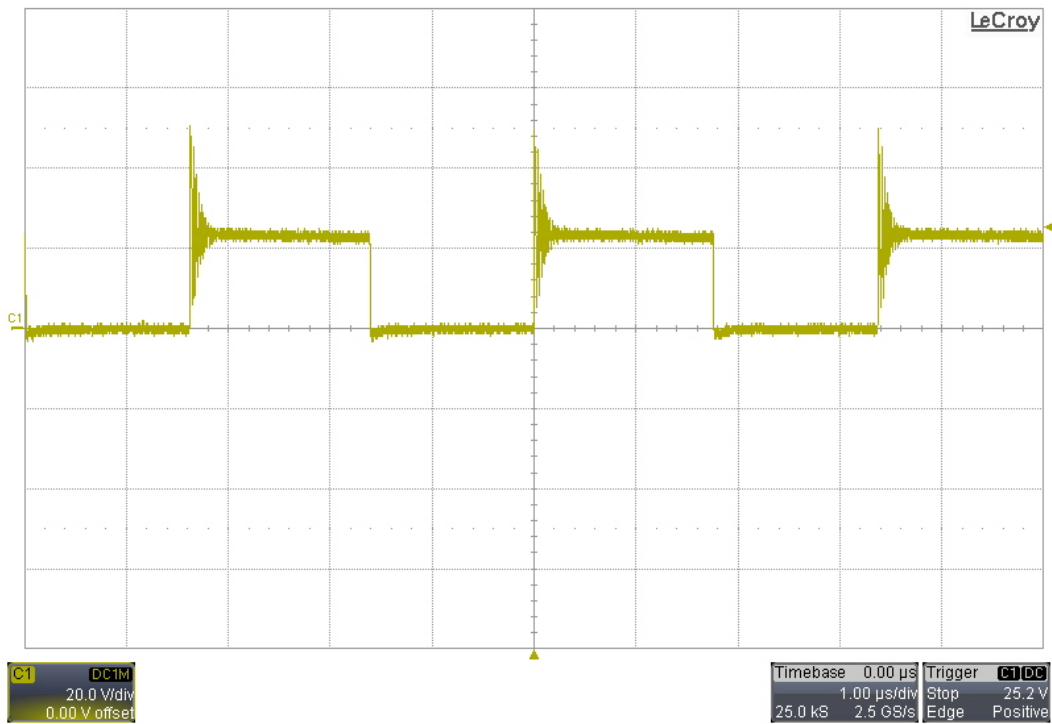
## 9.3 Sync FET Vds (Q2) – 48V<sub>in</sub>, 13A Load



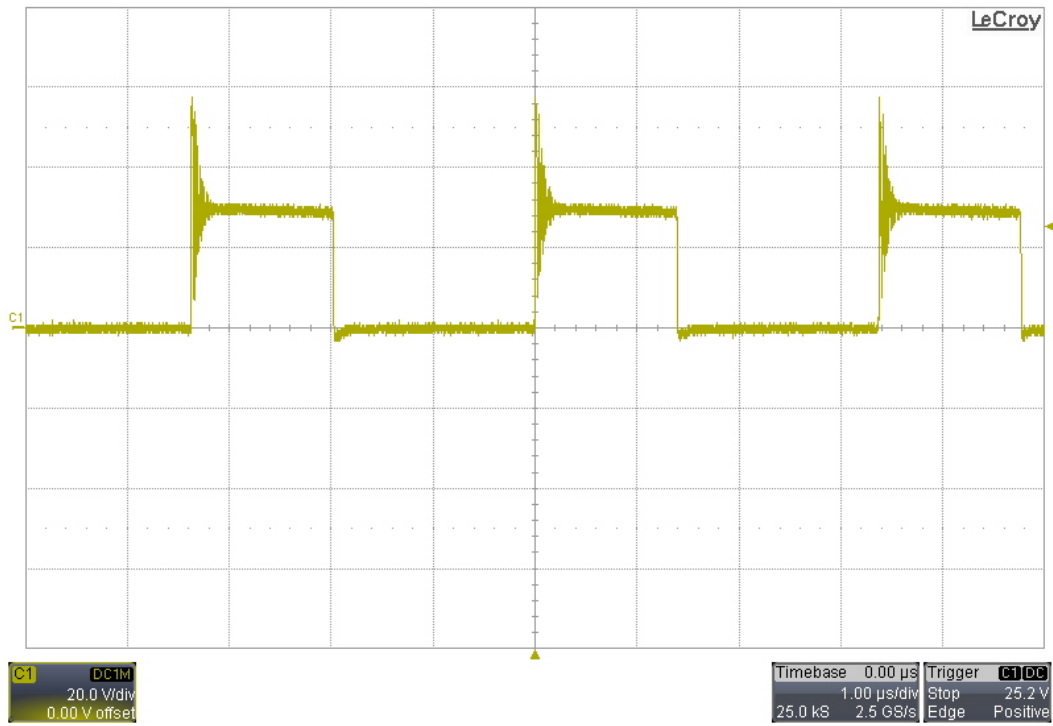
## 9.4 Sync FET Vds (Q2) – 60Vin, 13A Load



## 9.5 Sync FETs Vds (Q7) – 48Vin, 13A Load



## 9.6 Sync FET Vds (Q7) – 60Vin, 13A Load



## IMPORTANT NOTICE AND DISCLAIMER

TI PROVIDES TECHNICAL AND RELIABILITY DATA (INCLUDING DATASHEETS), DESIGN RESOURCES (INCLUDING REFERENCE DESIGNS), APPLICATION OR OTHER DESIGN ADVICE, WEB TOOLS, SAFETY INFORMATION, AND OTHER RESOURCES "AS IS" AND WITH ALL FAULTS, AND DISCLAIMS ALL WARRANTIES, EXPRESS AND IMPLIED, INCLUDING WITHOUT LIMITATION ANY IMPLIED WARRANTIES OF MERCHANTABILITY, FITNESS FOR A PARTICULAR PURPOSE OR NON-INFRINGEMENT OF THIRD PARTY INTELLECTUAL PROPERTY RIGHTS.

These resources are intended for skilled developers designing with TI products. You are solely responsible for (1) selecting the appropriate TI products for your application, (2) designing, validating and testing your application, and (3) ensuring your application meets applicable standards, and any other safety, security, or other requirements. These resources are subject to change without notice. TI grants you permission to use these resources only for development of an application that uses the TI products described in the resource. Other reproduction and display of these resources is prohibited. No license is granted to any other TI intellectual property right or to any third party intellectual property right. TI disclaims responsibility for, and you will fully indemnify TI and its representatives against, any claims, damages, costs, losses, and liabilities arising out of your use of these resources.

TI's products are provided subject to TI's Terms of Sale (<https://www.ti.com/legal/termsofsale.html>) or other applicable terms available either on [ti.com](https://www.ti.com) or provided in conjunction with such TI products. TI's provision of these resources does not expand or otherwise alter TI's applicable warranties or warranty disclaimers for TI products.

Mailing Address: Texas Instruments, Post Office Box 655303, Dallas, Texas 75265  
Copyright © 2021, Texas Instruments Incorporated