

**Test Data
For PMP10712
08/011/2015**



Table of Contents

1. Design Specifications	3
2. Circuit Description	3
3. PMP10712 Board Photos	4
4. Thermal Data	5
5. Test results	6
5.1 Efficiency Chart	6
5.2 Efficiency Data	7
6. Test results	8
6.1 Startup	8
6.2 Output Voltage Ripple and Switch Node Voltage	12

1. Design Specifications

Vin Minimum	3.3 V- Full Load
Vin Maximum	5.5V
Vin Nominal	3.6V
Vout	120V
Iout	10mA
Switching Frequency(SMPS)	130 KHz
Isolation	2KVAC

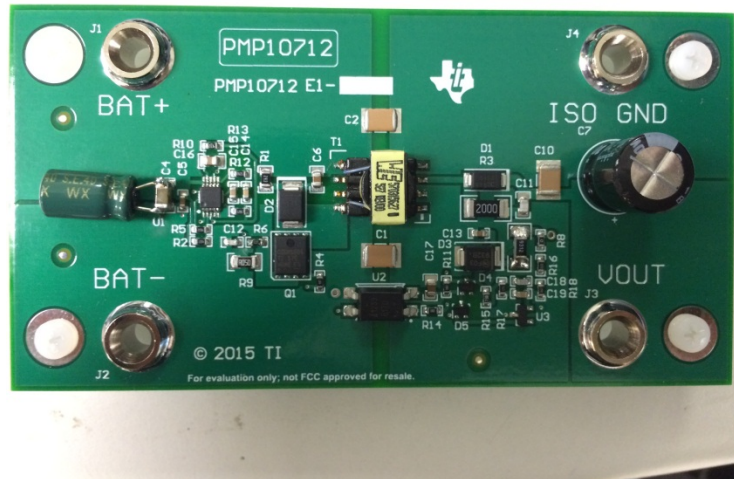
2. Circuit Description

PMP10712 is a 1.2W isolated flyback design that supports very low Vin of 3.3V-6V and is capable of delivering 10mA at 120V output. The design uses LM3481 Boost controller IC which works on current mode operation and can be synchronized to any frequency between 100KHz to 1 MHz.

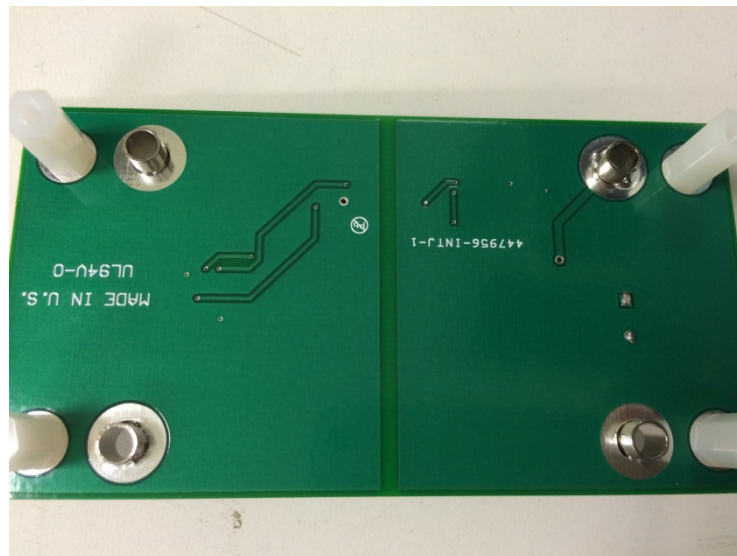
This design was built on a 2 layer board and is a simple, low-BOM-count, and low-cost design providing an isolated output.

3. PMP10712 Board Photos

Board Dimensions: 2125 mil * 4055 mil

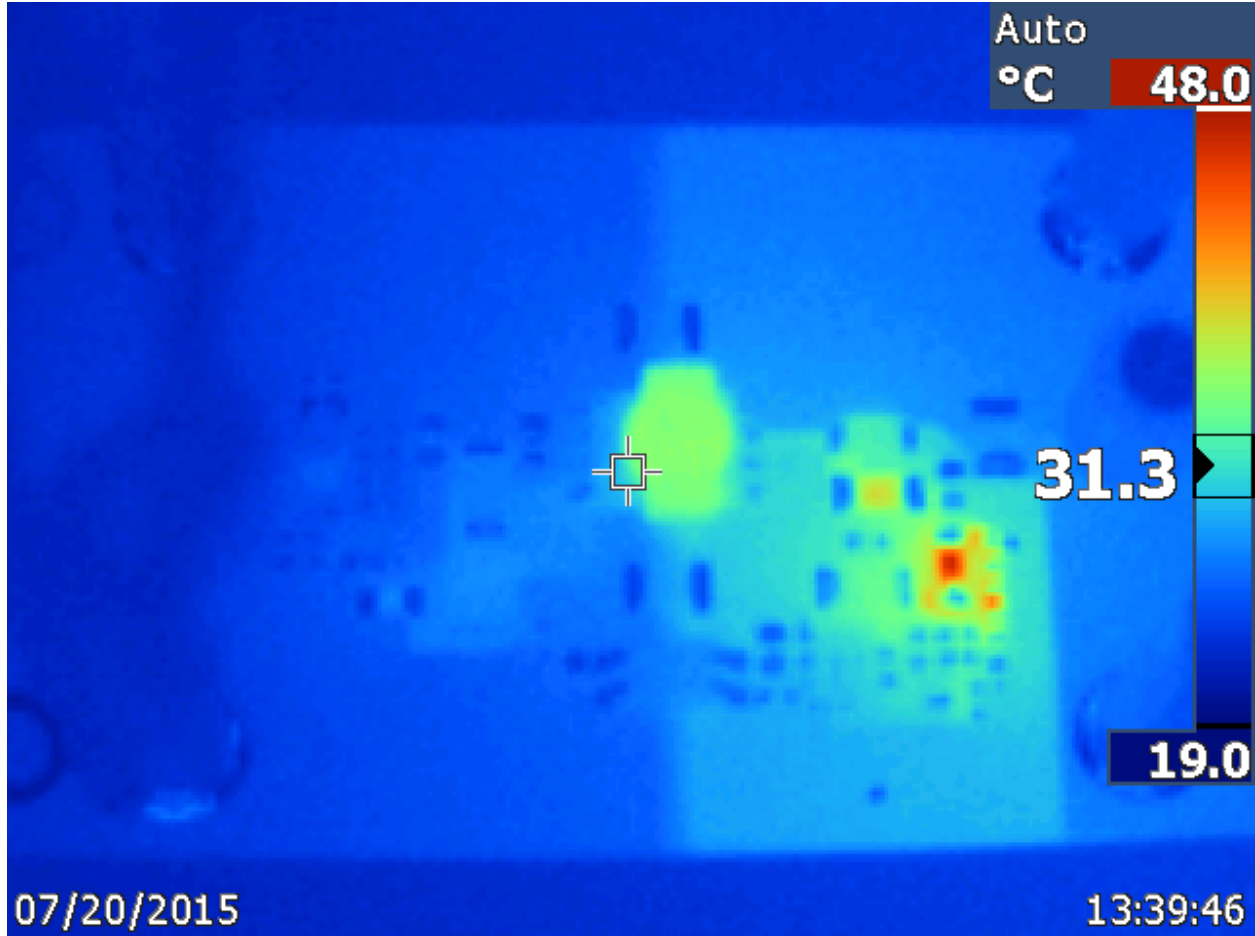


Board Photo (Top)



Board Photo (Bottom)

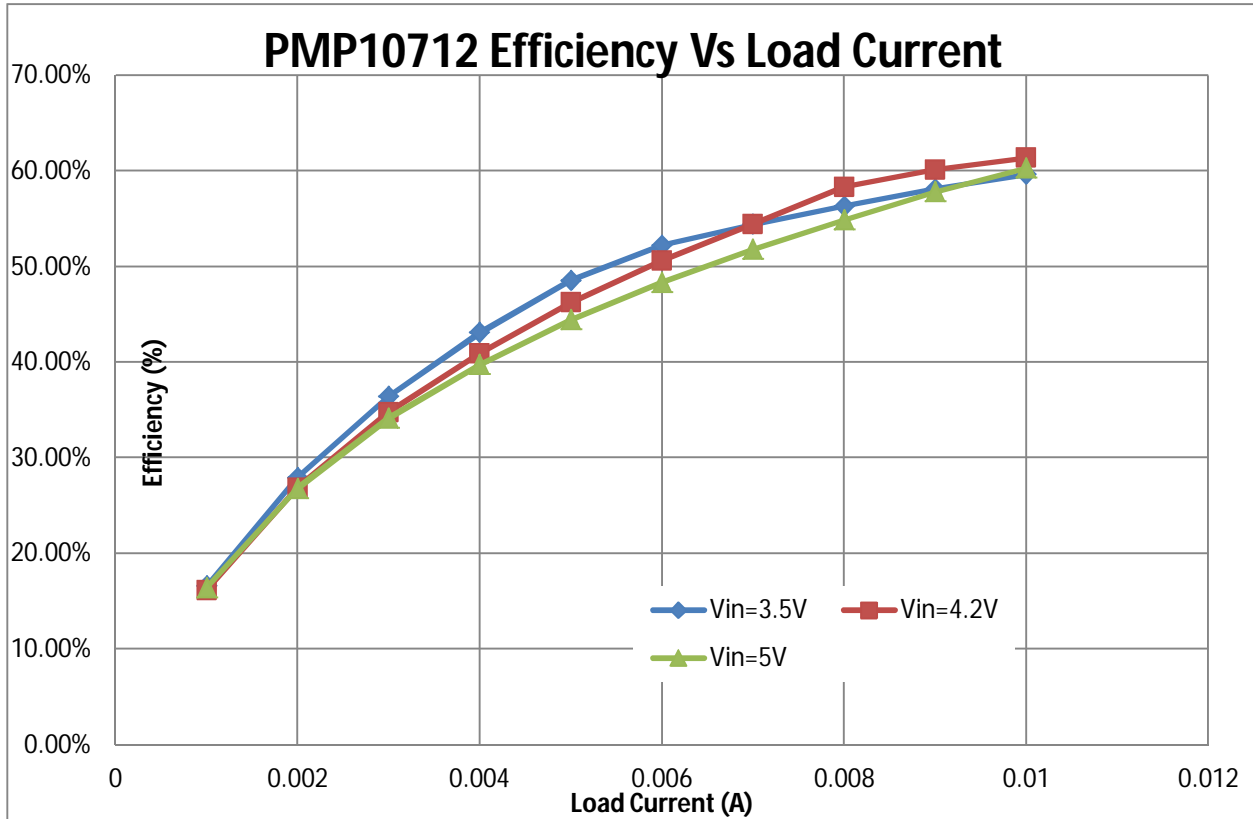
4. Thermal Data



IR thermal image taken at steady state with 3.5 Vin and 120V@10mA output

5. Test results

5.1 Efficiency Chart



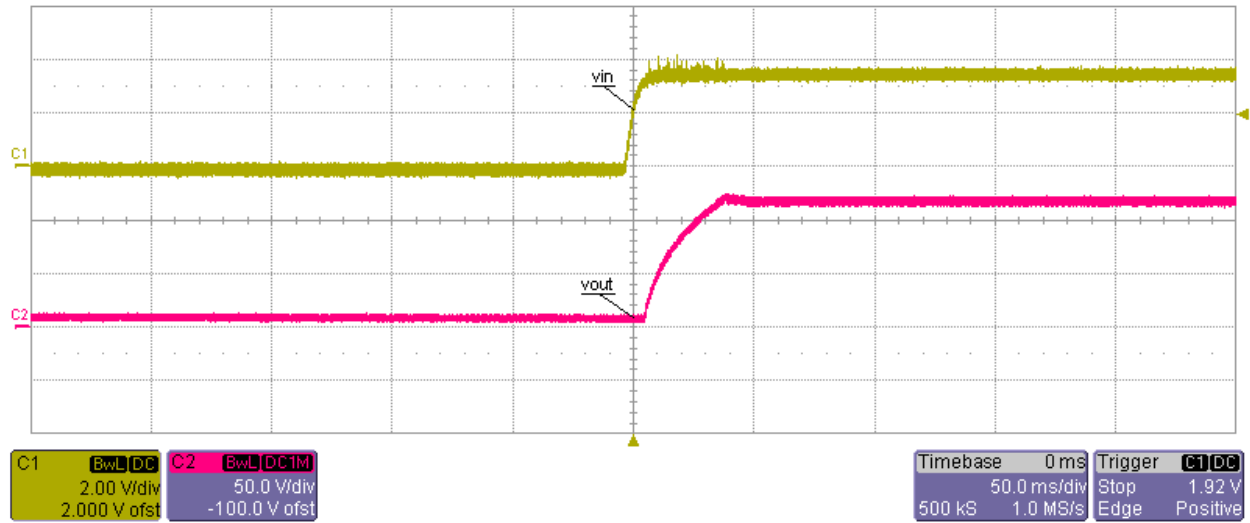
5.2 Efficiency Data

Vin (V)	Iin (A)	Vout (V)	Iout (A)	Pin (W)	Pout (W)	Efficiency (%)
3.5	0.202	117.3	0.001	0.707	0.1173	16.59%
3.5	0.24	117.3	0.002	0.84	0.2346	27.93%
3.5	0.276	117.3	0.003	0.966	0.3519	36.43%
3.5	0.311	117.3	0.004	1.0885	0.4692	43.11%
3.5	0.345	117.3	0.005	1.2075	0.5865	48.57%
3.5	0.385	117.3	0.006	1.3475	0.7038	52.23%
3.5	0.431	117.3	0.007	1.5085	0.8211	54.43%
3.5	0.476	117.3	0.008	1.666	0.9384	56.33%
3.5	0.519	117.3	0.009	1.8165	1.0557	58.12%
3.5	0.562	117.3	0.01	1.967	1.173	59.63%
Vin (V)	Iin (A)	Vout (V)	Iout (A)	Pin (W)	Pout (W)	Efficiency (%)
4.2	0.173	117.3	0.001	0.7266	0.1173	16.14%
4.2	0.208	117.3	0.002	0.8736	0.2346	26.85%
4.2	0.241	117.3	0.003	1.0122	0.3519	34.77%
4.2	0.273	117.3	0.004	1.1466	0.4692	40.92%
4.2	0.302	117.3	0.005	1.2684	0.5865	46.24%
4.2	0.331	117.3	0.006	1.3902	0.7038	50.63%
4.2	0.359	117.3	0.007	1.5078	0.8211	54.46%
4.2	0.383	117.3	0.008	1.6086	0.9384	58.34%
4.2	0.418	117.3	0.009	1.7556	1.0557	60.13%
4.2	0.455	117.3	0.01	1.911	1.173	61.38%

Vin (V)	Iin (A)	Vout (V)	Iout (A)	Pin (W)	Pout (W)	Efficiency (%)
5	0.143	117.3	0.001	0.715	0.1173	16.41%
5	0.175	117.3	0.002	0.875	0.2346	26.81%
5	0.206	117.3	0.003	1.03	0.3519	34.17%
5	0.236	117.3	0.004	1.18	0.4692	39.76%
5	0.264	117.3	0.005	1.32	0.5865	44.43%
5	0.291	117.3	0.006	1.455	0.7038	48.37%
5	0.317	117.3	0.007	1.585	0.8211	51.80%
5	0.342	117.3	0.008	1.71	0.9384	54.88%
5	0.365	117.3	0.009	1.825	1.0557	57.85%
5	0.389	117.3	0.01	1.945	1.173	60.31%

6. Test results

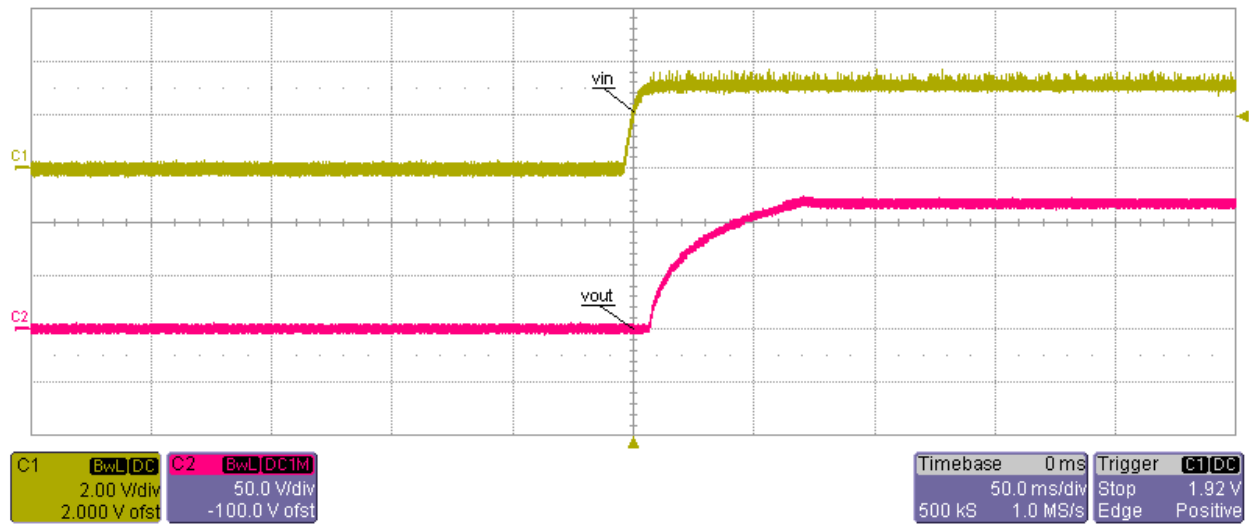
6.1 Startup



Startup into No Load at 3.5 Vin

C1- Vin

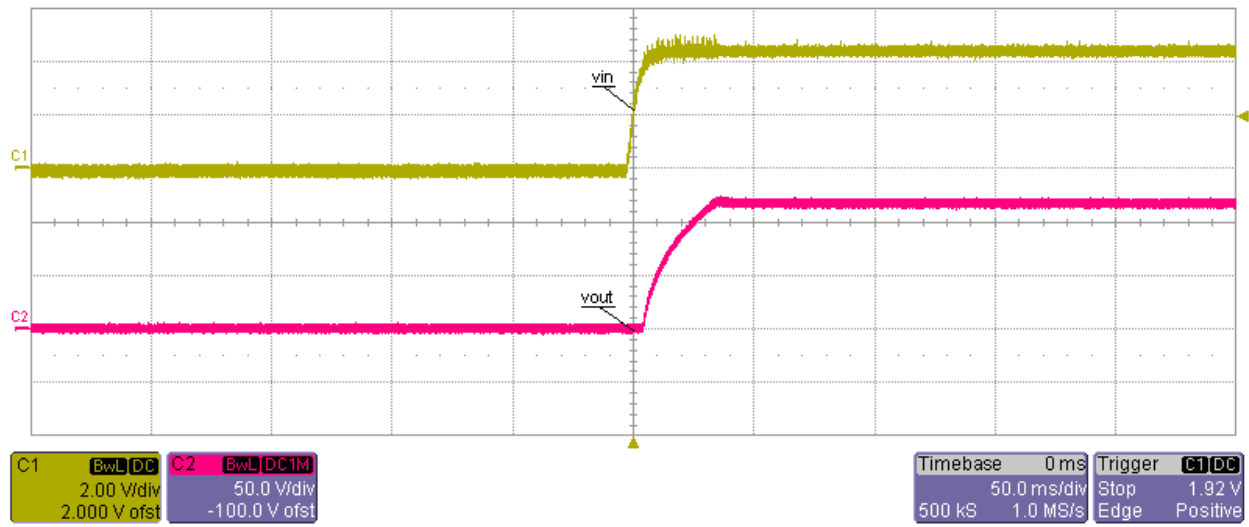
C2-Vout



Startup into Full Load(10mA) at 3.5 Vin

C1- Vin

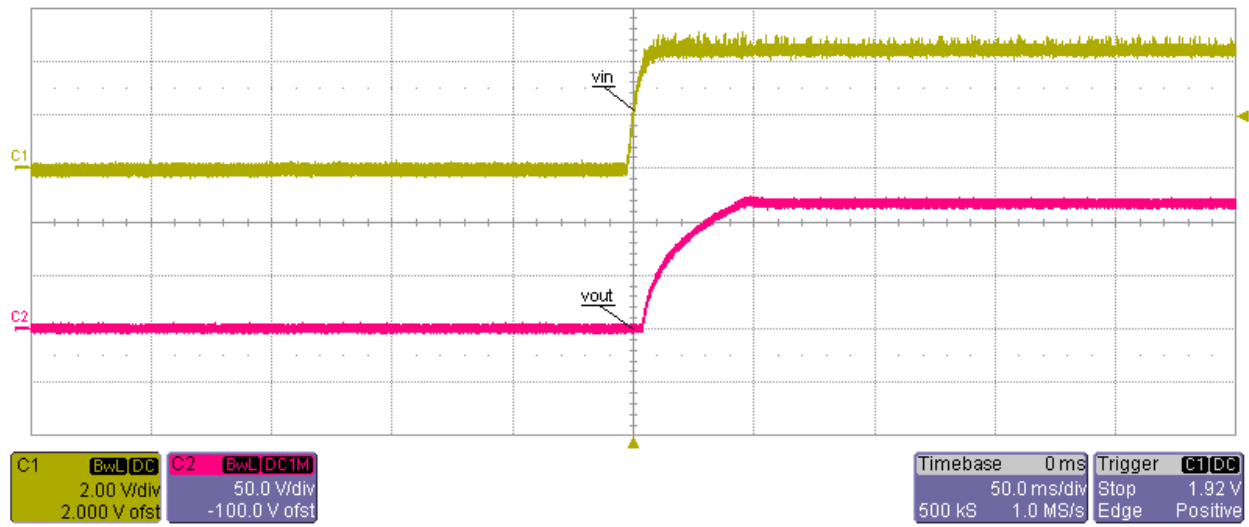
C2-Vout



Startup into No Load at 5 Vin

C1- Vin

C2-Vout

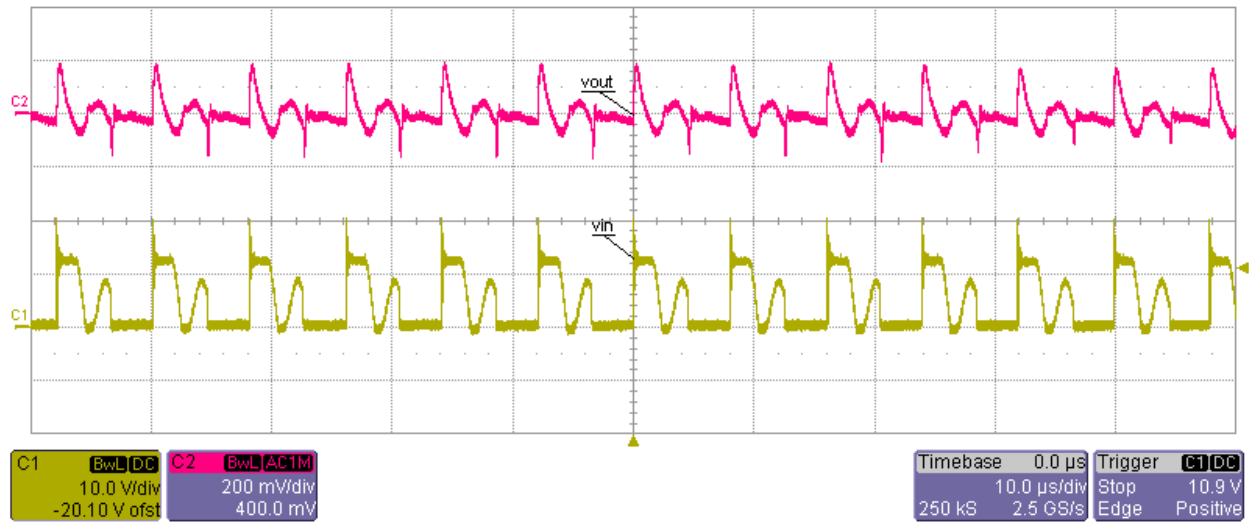


Startup into Full Load(10mA) at 5 Vin

C1- Vin

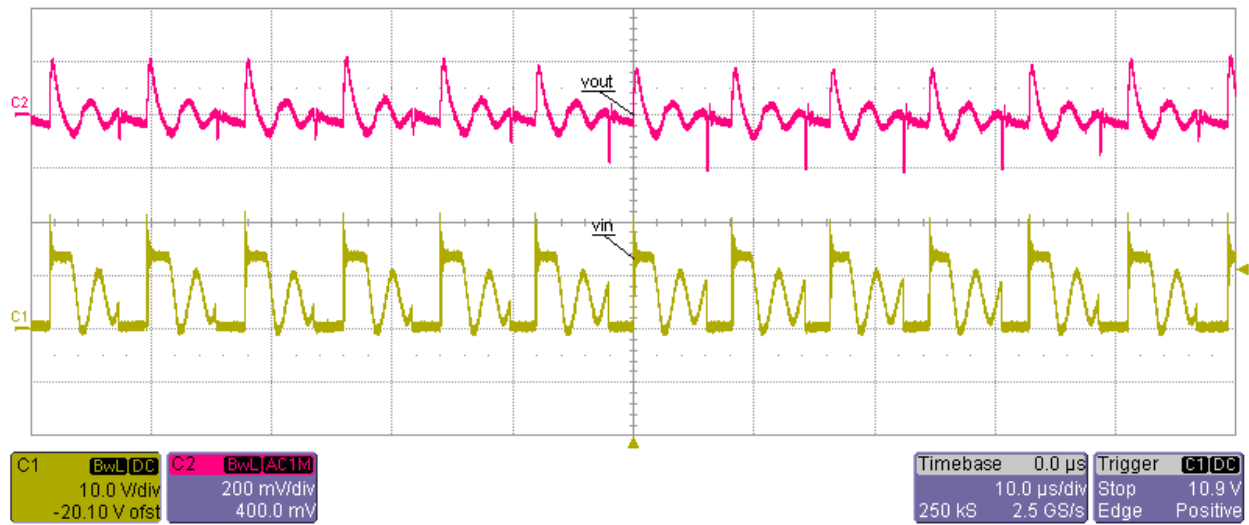
C2-Vout

6.2 Output Voltage Ripple and Switch Node Voltage



Ch1 - Switch Node Voltage

Ch2-Output Voltage Ripple at 3.5Vin @ 10mA output



Ch1 - Switch Node Voltage

Ch2-Output Voltage Ripple at 5Vin @ 10mA output

IMPORTANT NOTICE AND DISCLAIMER

TI PROVIDES TECHNICAL AND RELIABILITY DATA (INCLUDING DATASHEETS), DESIGN RESOURCES (INCLUDING REFERENCE DESIGNS), APPLICATION OR OTHER DESIGN ADVICE, WEB TOOLS, SAFETY INFORMATION, AND OTHER RESOURCES "AS IS" AND WITH ALL FAULTS, AND DISCLAIMS ALL WARRANTIES, EXPRESS AND IMPLIED, INCLUDING WITHOUT LIMITATION ANY IMPLIED WARRANTIES OF MERCHANTABILITY, FITNESS FOR A PARTICULAR PURPOSE OR NON-INFRINGEMENT OF THIRD PARTY INTELLECTUAL PROPERTY RIGHTS.

These resources are intended for skilled developers designing with TI products. You are solely responsible for (1) selecting the appropriate TI products for your application, (2) designing, validating and testing your application, and (3) ensuring your application meets applicable standards, and any other safety, security, or other requirements. These resources are subject to change without notice. TI grants you permission to use these resources only for development of an application that uses the TI products described in the resource. Other reproduction and display of these resources is prohibited. No license is granted to any other TI intellectual property right or to any third party intellectual property right. TI disclaims responsibility for, and you will fully indemnify TI and its representatives against, any claims, damages, costs, losses, and liabilities arising out of your use of these resources.

TI's products are provided subject to TI's Terms of Sale (<https://www.ti.com/legal/termsofsale.html>) or other applicable terms available either on [ti.com](https://www.ti.com) or provided in conjunction with such TI products. TI's provision of these resources does not expand or otherwise alter TI's applicable warranties or warranty disclaimers for TI products.

Mailing Address: Texas Instruments, Post Office Box 655303, Dallas, Texas 75265
Copyright © 2021, Texas Instruments Incorporated