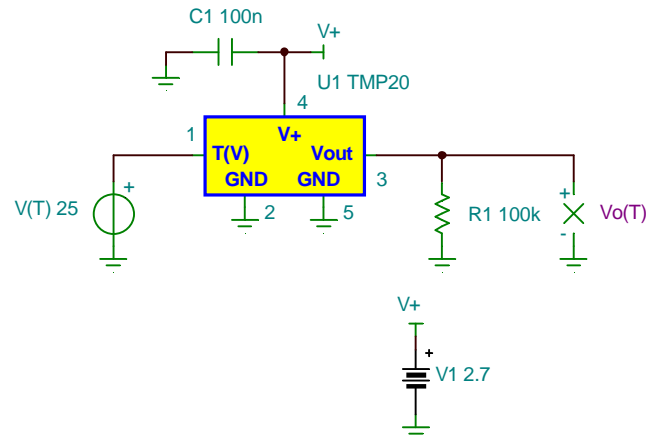


TMP20 TINA-TI Reference Design

V(T) is an input voltage equivalent to temperature such that $1V = 1^{\circ}C$. For example $-55V = -55^{\circ}C$, and $25V = +25^{\circ}C$. V(T) can be a low frequency AC source applied to simulate a particular temperature cycle. Be aware that the thermal time constants are built into the model and that limits the response time.



Examples of TINA-TI TMP20 circuit simulations. The circuit configuration has been adjusted as required for the particular simulation.

