

A

B

C

D

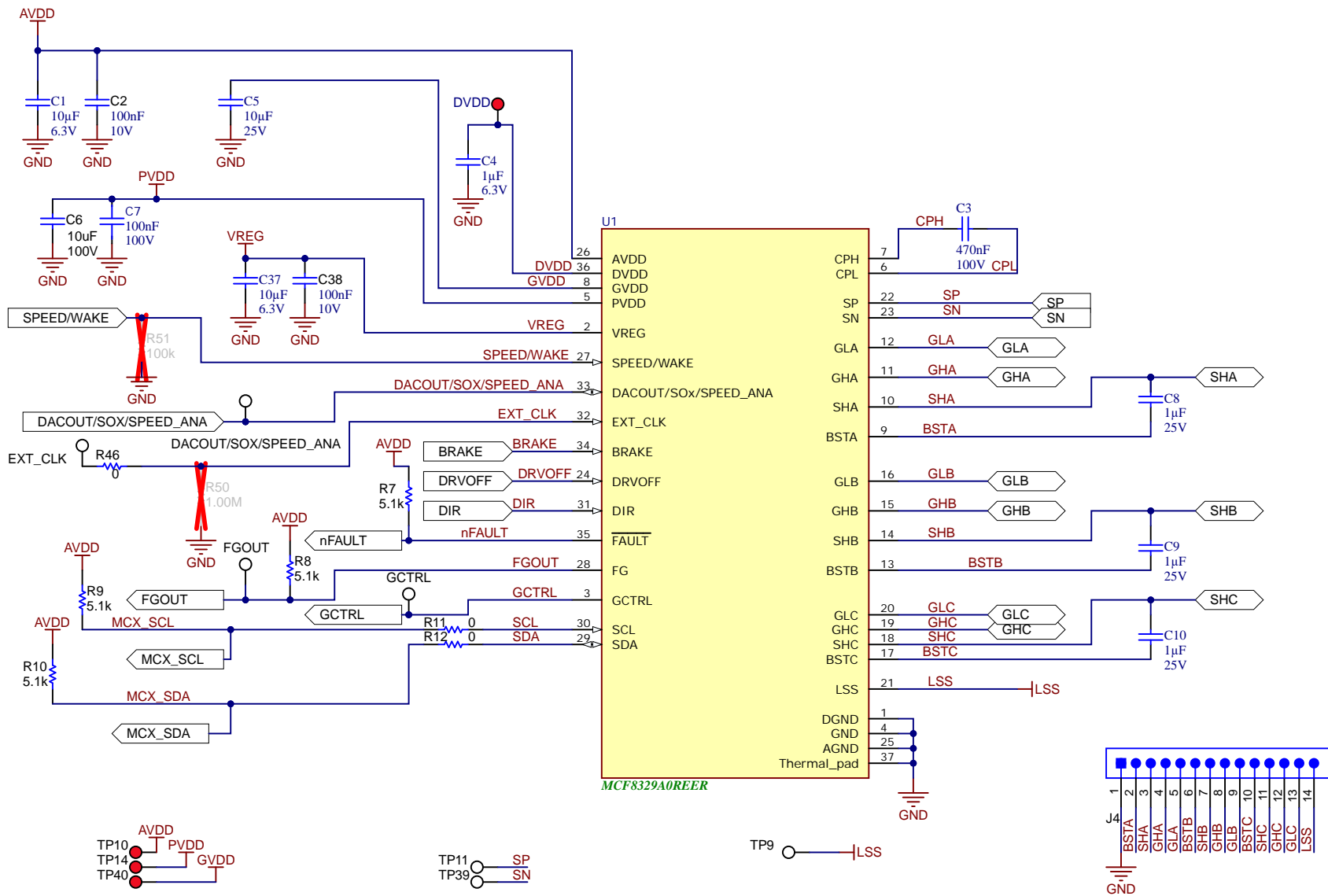
A

B

C

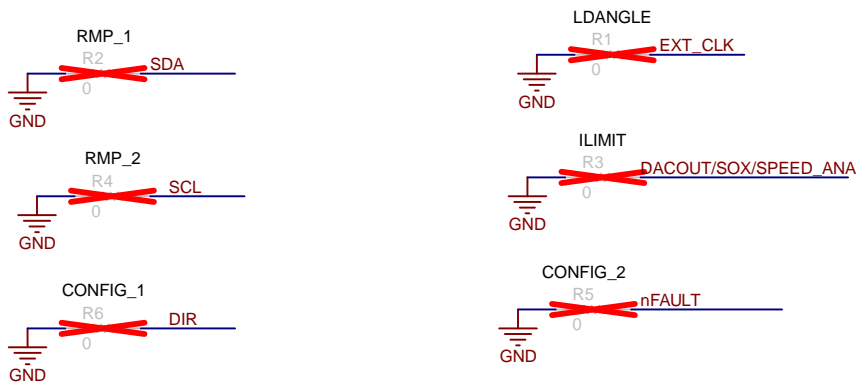
D

MCx8329A

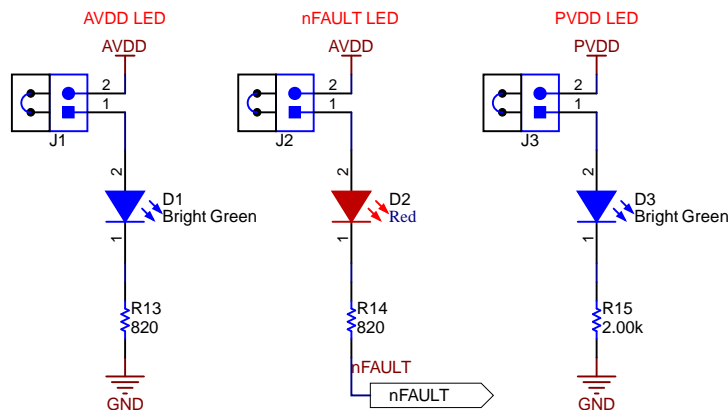


MCT8329A Hardware Variant

Hardware Variant Resistors (MCT8329A hardware variant only)

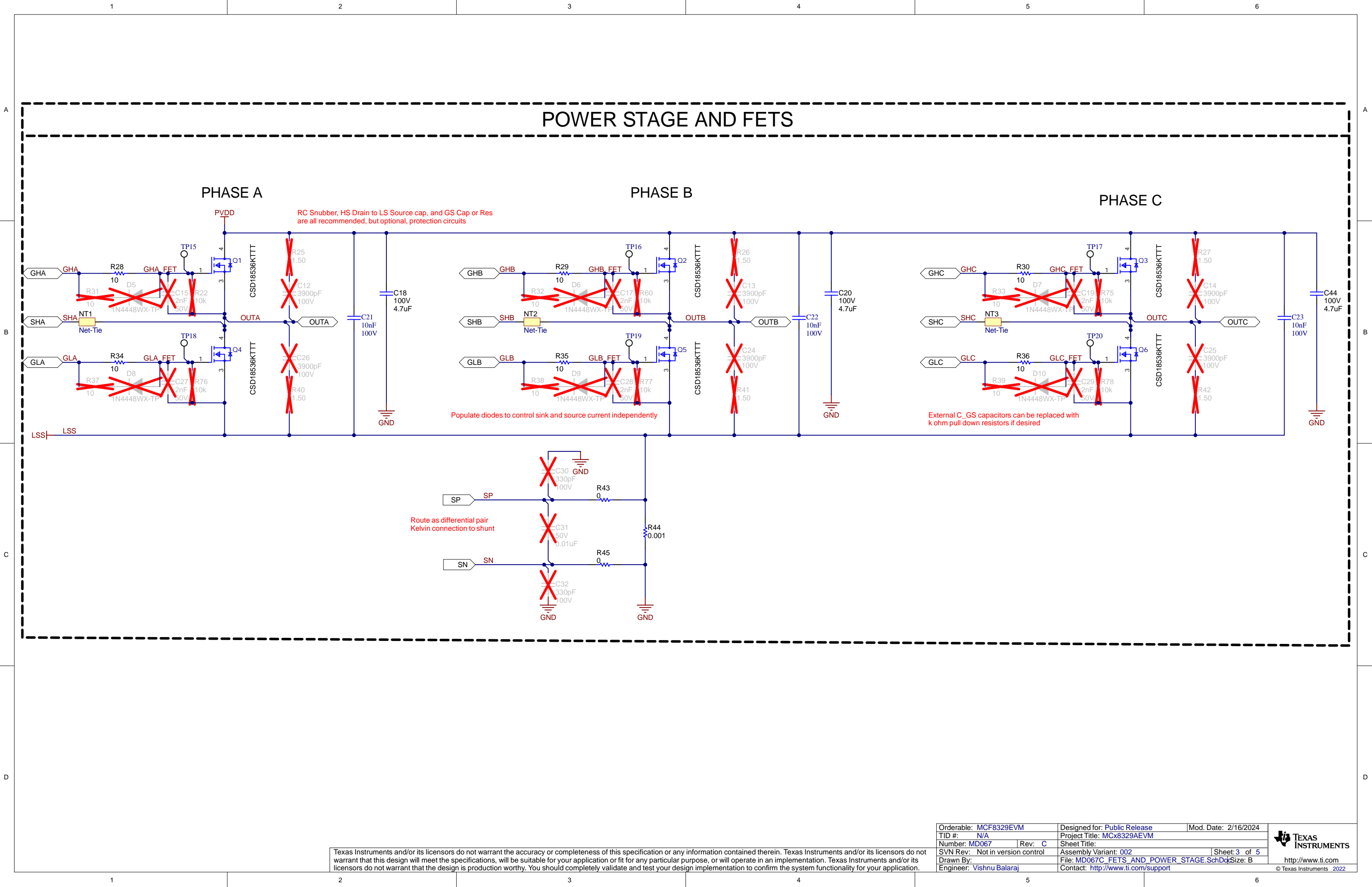


STATUS LEDs



Texas Instruments and/or its licensors do not warrant the accuracy or completeness of this specification or any information contained therein. Texas Instruments and/or its licensors do not warrant that this design will meet the specifications, will be suitable for your application or fit for any particular purpose, or will operate in an implementation. Texas Instruments and/or its licensors do not warrant that the design is production worthy. You should completely validate and test your design implementation to confirm the system functionality for your application.

Orderable: MCF8329EVM	Designed for: Public Release	Mod. Date: 2/16/2024
TID #: N/A	Project Title: MCx8329AEVM	
Number: MD067	Rev: C	Sheet Title:
SVN Rev: Not in version control	Assembly Variant: 002	Sheet: 2 of 5
Drawn By:	File: MD067C_DRIVER.SchDoc	Size: B
Engineer: Vishnu Balaraj	Contact: http://www.ti.com/support	



POWER STAGE AND FETS

PHASE A

PHASE B

PHASE C

RC Snubber, HS Drain to LS Source cap, and GS Cap or Res are all recommended, but optional, protection circuits

Populate diodes to control sink and source current independently

External C_{GS} capacitors can be replaced with k ohm pull down resistors if desired

Route as differential pair
Kelvin connection to shunt

