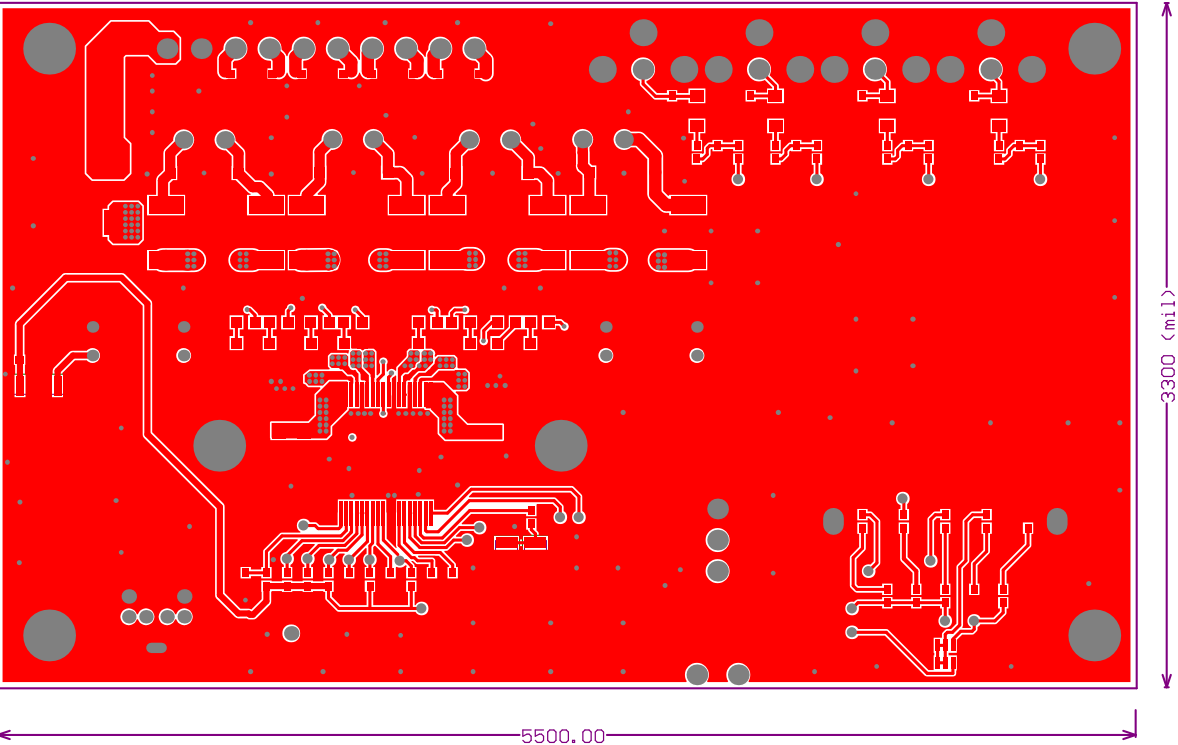


Title		
TAS5414BDKD EVB Schematic		
Size	Number	Revision
B		
Date:	3/14/2012	Sheet of
File:	C:\Documents and Settings\Sheet1.SchDoc	Drawn By:



Fab Notes

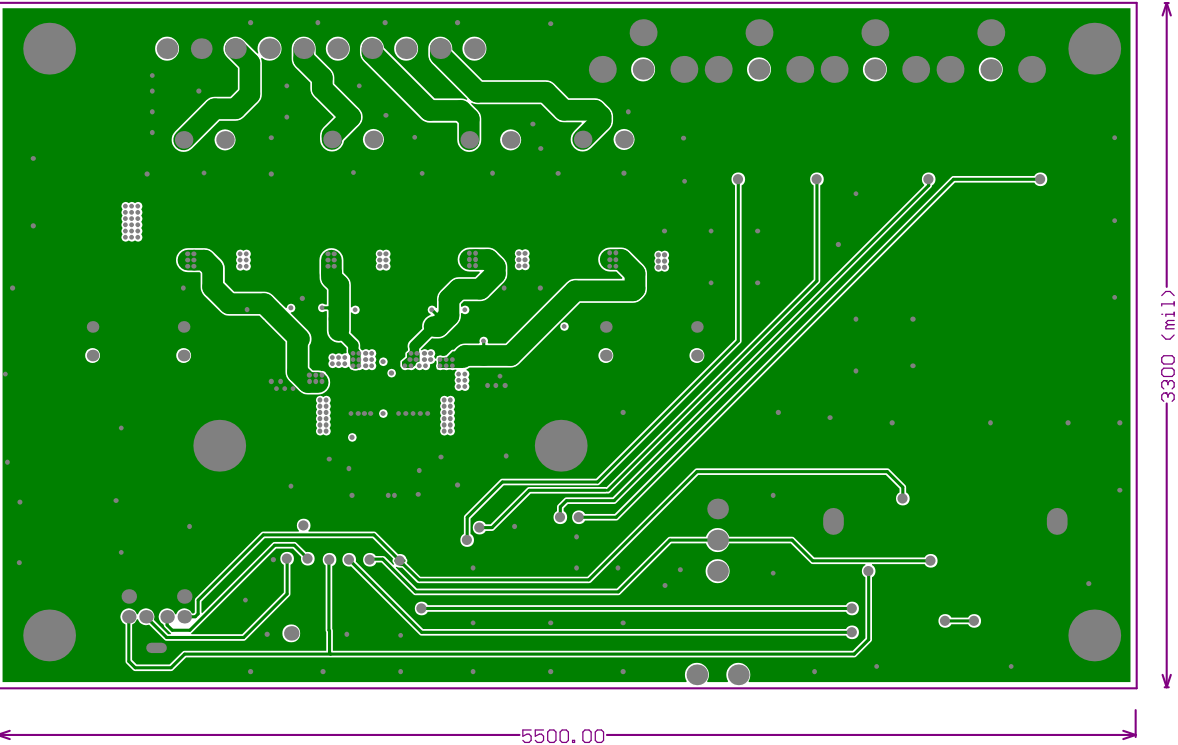
- 1. All plated through holes to be chemically cleaned
- 2. End item to meet or exceed IPC-A-600
- 3. Material: FR-370HR
- 4. Finished Thickness = 0.063 in. +/-0.005
- 5. All copper weight = 1oz
- 6. Position Accuracy = +/- 0.0015
- 7. Apply Blue Enthone soldermask to both sides of board  
separate artwork for bottom and top
- 8. Apply White LPI silkscreen to top side of board
- 9. Warpage = +/- 0.005 per linear inch max.
- 10. SMOBC
- 11. All holes are plated unless otherwise stated

Unless otherwise specified, Dimensions are in inches

Tolerances:   Corners = 0.075 R Max  
                  Angles = +/- 5 degrees

Hole Diameters:   <=0.080 +/-0.003  
                          >0.080 = +/- 0.004

Dimensional limits apply after plating and coating



Fab Notes

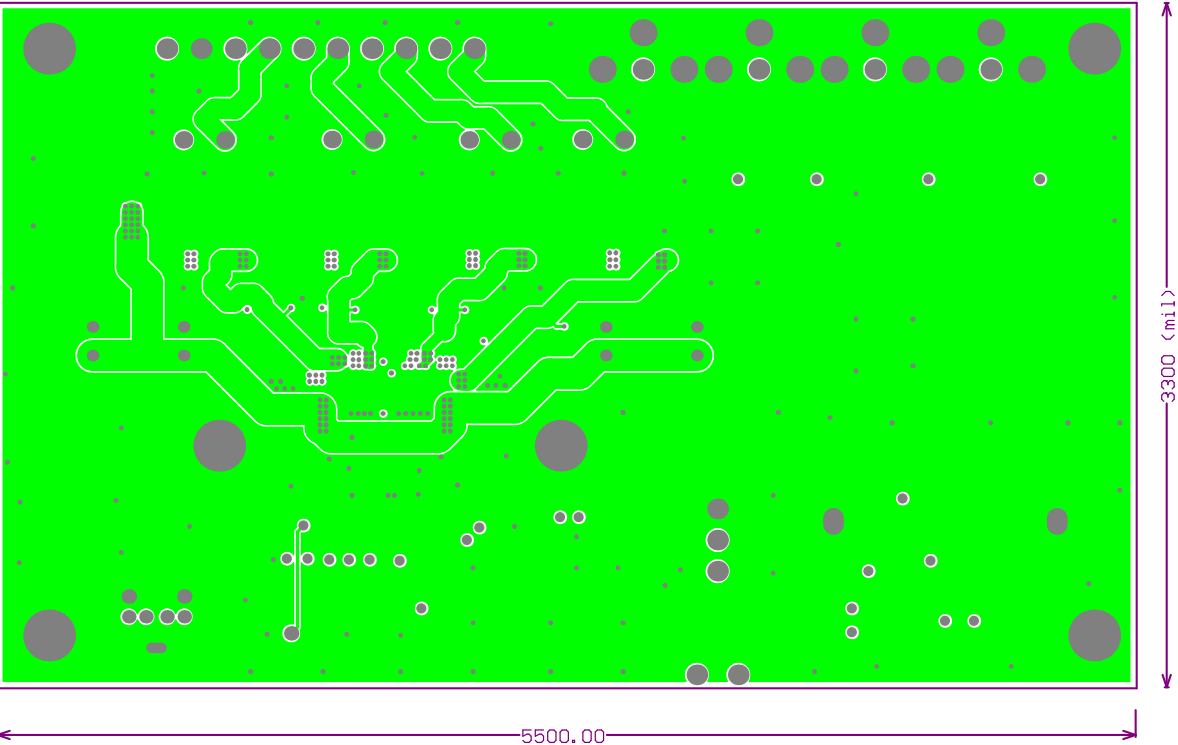
- 1. All plated through holes to be chemically cleaned
- 2. End item to meet or exceed IPC-A-600
- 3. Material: FR-370HR
- 4. Finished Thickness = 0.063 in. +/-0.005
- 5. All copper weight = 1oz
- 6. Position Accuracy = +/- 0.0015
- 7. Apply Blue Enthone soldermask to both sides of board  
separate artwork for bottom and top
- 8. Apply White LPI silkscreen to top side of board
- 9. Warpage = +/- 0.005 per linear inch max.
- 10. SMOBC
- 11. All holes are plated unless otherwise stated

Unless otherwise specified, Dimensions are in inches

Tolerances:   Corners = 0.075 R Max  
                  Angles = +/- 5 degrees

Hole Diameters:   <=0.080 +/-0.003  
                          >0.080 = +/- 0.004

Dimensional limits apply after plating and coating



Fab Notes

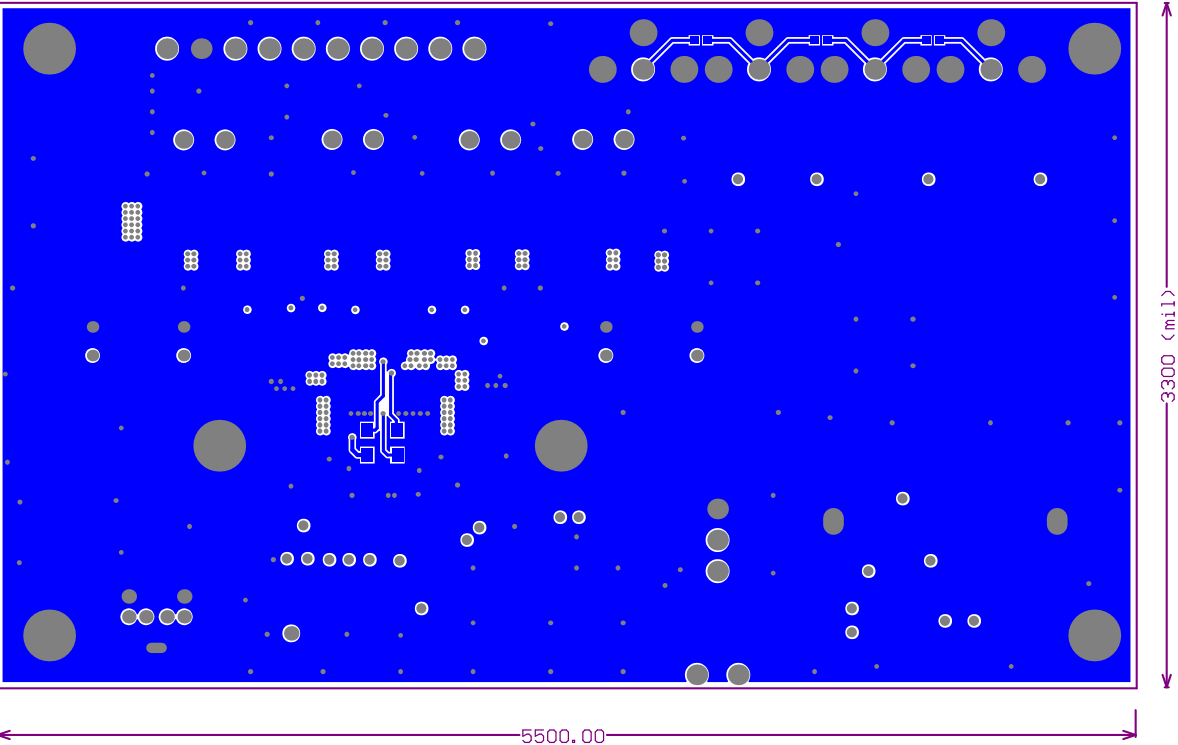
- 1. All plated through holes to be chemically cleaned
- 2. End item to meet or exceed IPC-A-600
- 3. Material: FR-370HR
- 4. Finished Thickness = 0.063 in. +/-0.005
- 5. All copper weight = 1oz
- 6. Position Accuracy = +/- 0.0015
- 7. Apply Blue Enthone soldermask to both sides of board  
separate artwork for bottom and top
- 8. Apply White LPI silkscreen to top side of board
- 9. Warpage = +/- 0.005 per linear inch max.
- 10. SMOBC
- 11. All holes are plated unless otherwise stated

Unless otherwise specified, Dimensions are in inches

Tolerances:   Corners = 0.075 R Max  
                  Angles = +/- 5 degrees

Hole Diameters:   <=0.080 +/-0.003  
                          >0.080 = +/- 0.004

Dimensional limits apply after plating and coating



Fab Notes

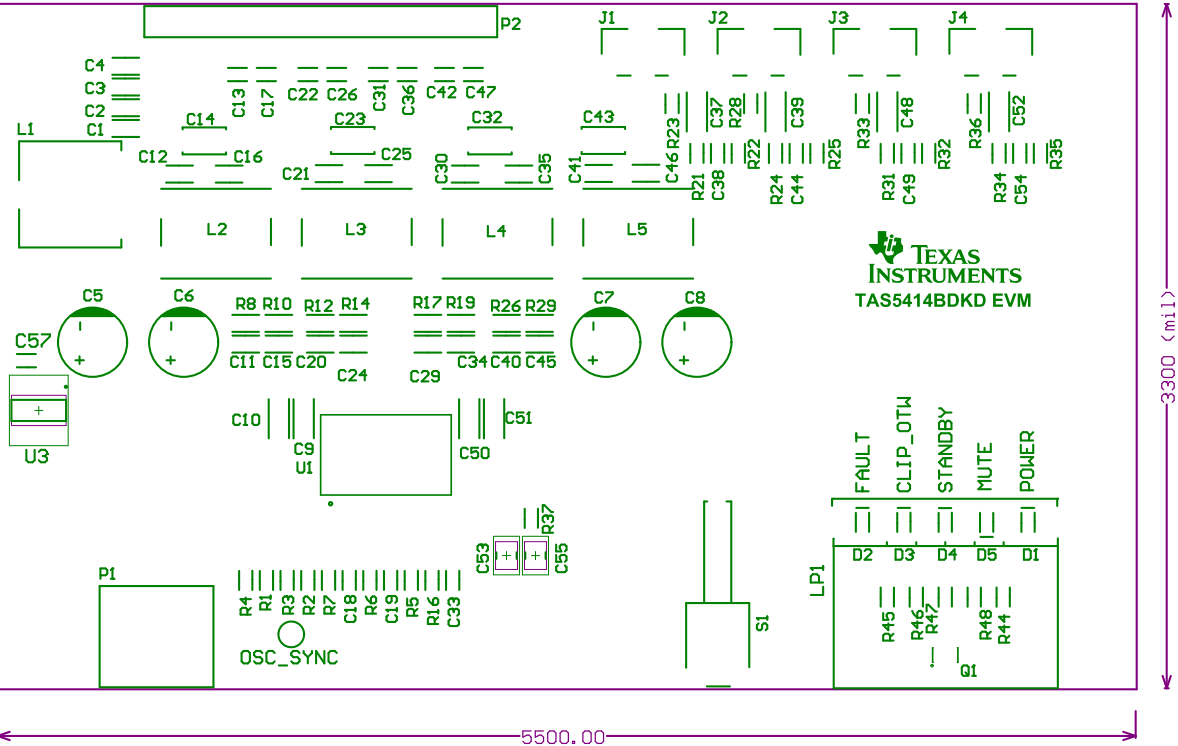
- 1. All plated through holes to be chemically cleaned
- 2. End item to meet or exceed IPC-A-600
- 3. Material: FR-370HR
- 4. Finished Thickness = 0.063 in. +/-0.005
- 5. All copper weight = 1oz
- 6. Position Accuracy = +/- 0.0015
- 7. Apply Blue Enthone soldermask to both sides of board  
separate artwork for bottom and top
- 8. Apply White LPI silkscreen to top side of board
- 9. Warpage = +/- 0.005 per linear inch max.
- 10. SMOBC
- 11. All holes are plated unless otherwise stated

Unless otherwise specified, Dimensions are in inches

Tolerances:   Corners = 0.075 R Max  
                  Angles = +/- 5 degrees

Hole Diameters:   <=0.080 +/-0.003  
                          >0.080 = +/- 0.004

Dimensional limits apply after plating and coating



## Fab Notes

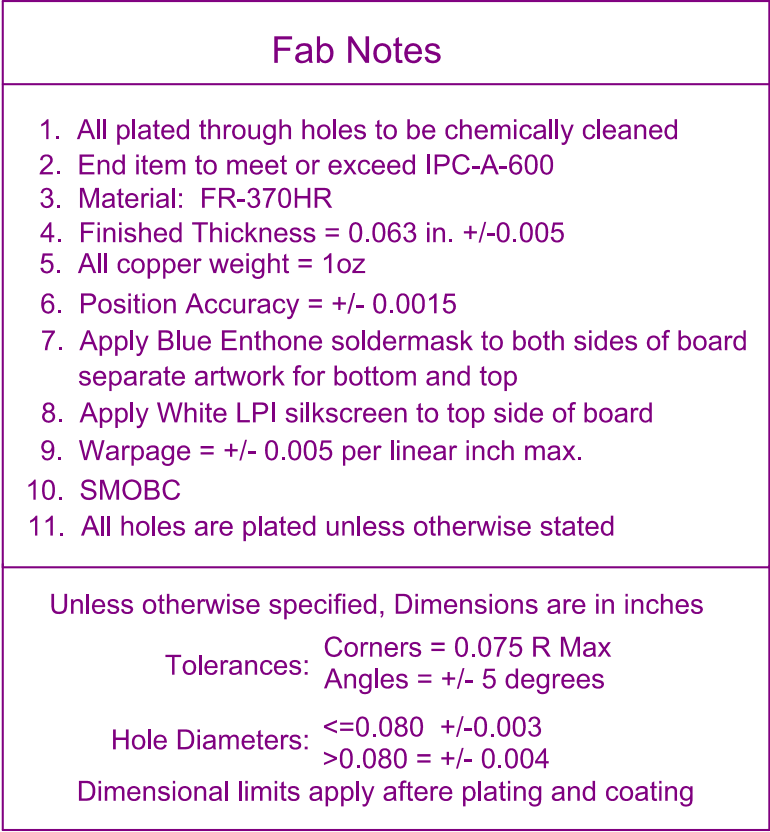
1. All plated through holes to be chemically cleaned
2. End item to meet or exceed IPC-A-600
3. Material: FR-370HR
4. Finished Thickness = 0.063 in. +/-0.005
5. All copper weight = 1oz
6. Position Accuracy = +/- 0.0015
7. Apply Blue Enthone soldermask to both sides of board  
separate artwork for bottom and top
8. Apply White LPI silkscreen to top side of board
9. Warpage = +/- 0.005 per linear inch max.
10. SMOBC
11. All holes are plated unless otherwise stated

Unless otherwise specified, Dimensions are in inches

Tolerances: Corners = 0.075 R Max  
Angles = +/- 5 degrees

Hole Diameters: <=0.080 +/-0.003  
>0.080 = +/- 0.004

Dimensional limits apply after plating and coating





Fab Notes

- 1. All plated through holes to be chemically cleaned
- 2. End item to meet or exceed IPC-A-600
- 3. Material: FR-370HR
- 4. Finished Thickness = 0.063 in. +/-0.005
- 5. All copper weight = 1oz
- 6. Position Accuracy = +/- 0.0015
- 7. Apply Blue Enthone soldermask to both sides of board  
separate artwork for bottom and top
- 8. Apply White LPI silkscreen to top side of board
- 9. Warpage = +/- 0.005 per linear inch max.
- 10. SMOBC
- 11. All holes are plated unless otherwise stated

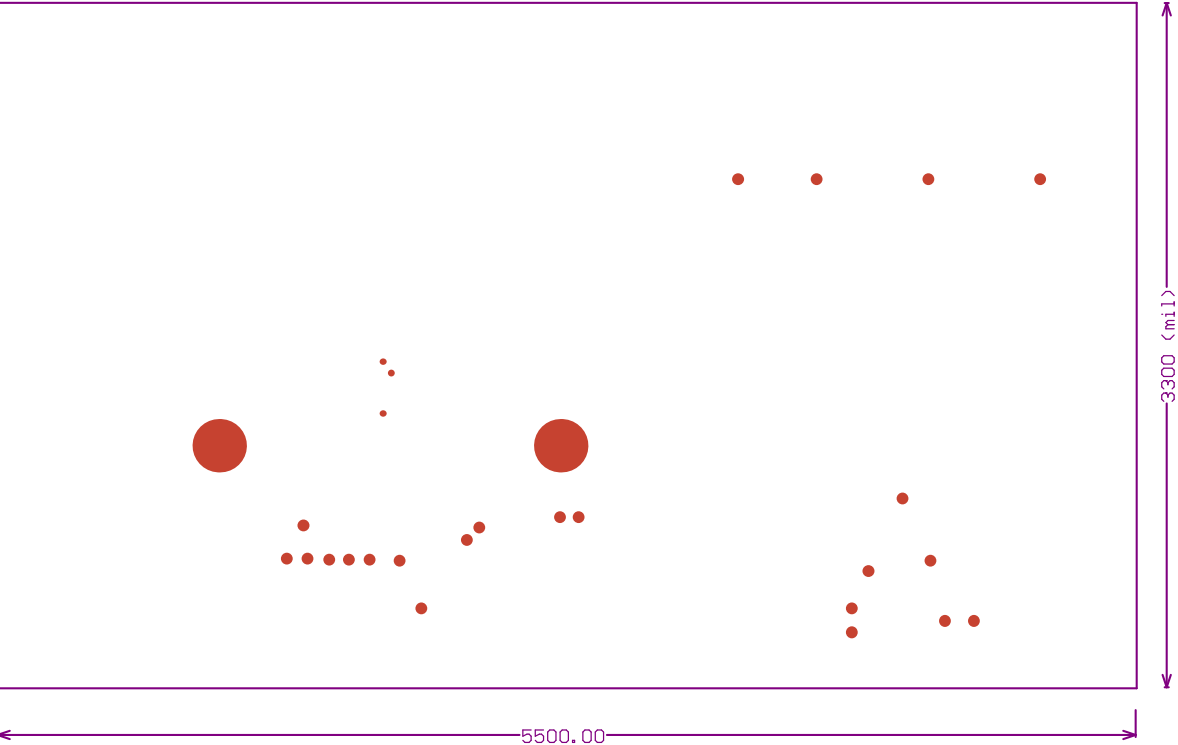
Unless otherwise specified, Dimensions are in inches

Tolerances:   Corners = 0.075 R Max  
                  Angles = +/- 5 degrees

Hole Diameters:   <=0.080 +/-0.003  
                          >0.080 = +/- 0.004

Dimensional limits apply after plating and coating





Fab Notes

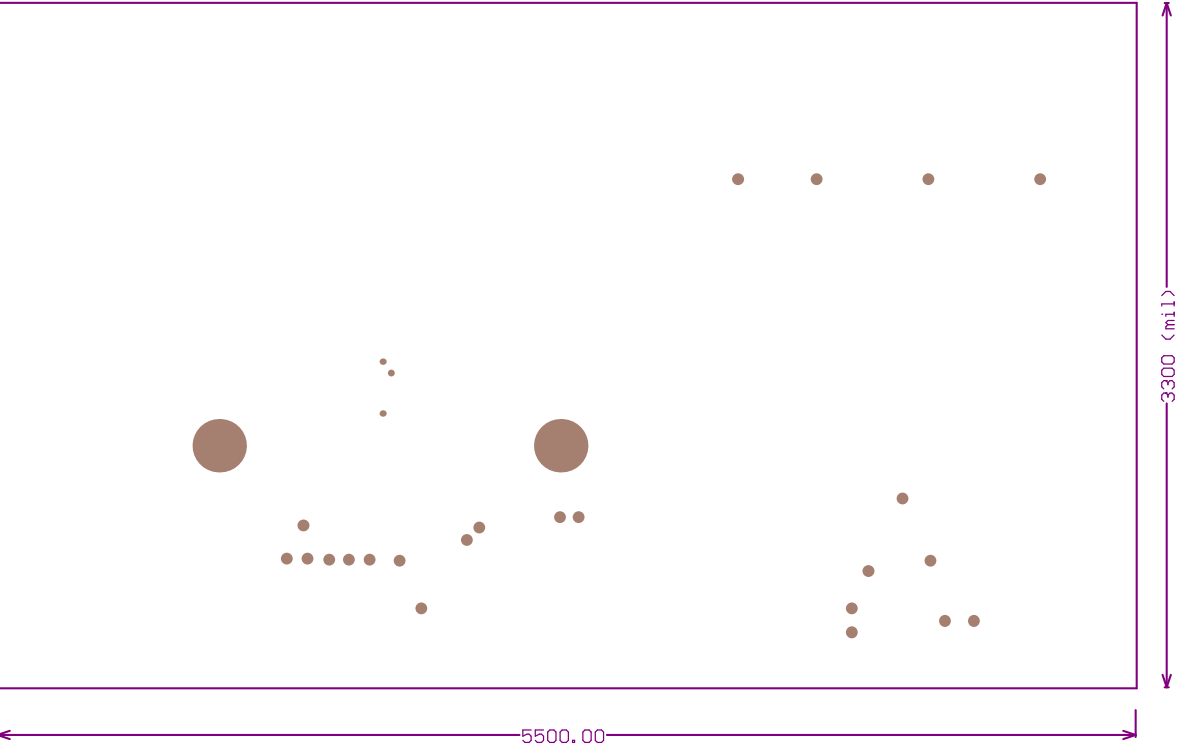
- 1. All plated through holes to be chemically cleaned
- 2. End item to meet or exceed IPC-A-600
- 3. Material: FR-370HR
- 4. Finished Thickness = 0.063 in. +/-0.005
- 5. All copper weight = 1oz
- 6. Position Accuracy = +/- 0.0015
- 7. Apply Blue Enthone soldermask to both sides of board  
separate artwork for bottom and top
- 8. Apply White LPI silkscreen to top side of board
- 9. Warpage = +/- 0.005 per linear inch max.
- 10. SMOBC
- 11. All holes are plated unless otherwise stated

Unless otherwise specified, Dimensions are in inches

Tolerances:   Corners = 0.075 R Max  
                  Angles = +/- 5 degrees

Hole Diameters:   <=0.080   +/-0.003  
                          >0.080   = +/- 0.004

Dimensional limits apply after plating and coating



Fab Notes

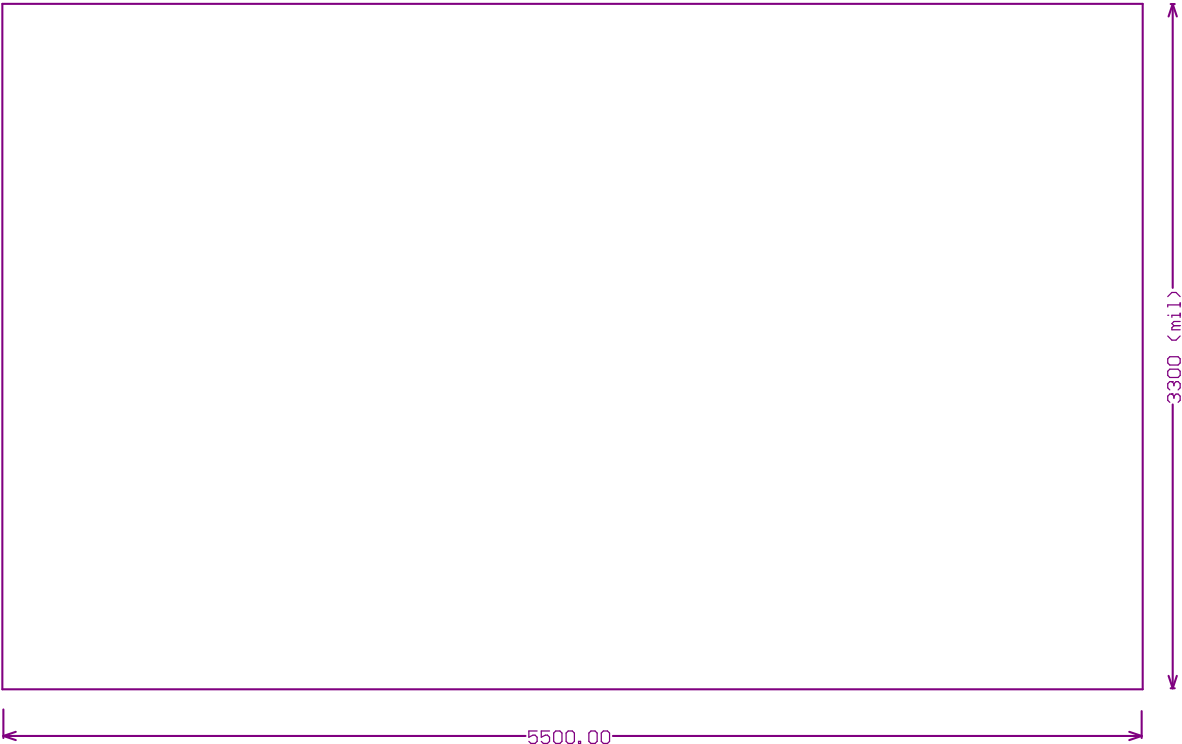
- 1. All plated through holes to be chemically cleaned
- 2. End item to meet or exceed IPC-A-600
- 3. Material: FR-370HR
- 4. Finished Thickness = 0.063 in. +/-0.005
- 5. All copper weight = 1oz
- 6. Position Accuracy = +/- 0.0015
- 7. Apply Blue Enthone soldermask to both sides of board  
separate artwork for bottom and top
- 8. Apply White LPI silkscreen to top side of board
- 9. Warpage = +/- 0.005 per linear inch max.
- 10. SMOBC
- 11. All holes are plated unless otherwise stated

Unless otherwise specified, Dimensions are in inches

Tolerances:   Corners = 0.075 R Max  
                  Angles = +/- 5 degrees

Hole Diameters:   <=0.080   +/-0.003  
                          >0.080   = +/- 0.004

Dimensional limits apply after plating and coating



Fab Notes

- 1. All plated through holes to be chemically cleaned
- 2. End item to meet or exceed IPC-A-600
- 3. Material: FR-370HR
- 4. Finished Thickness = 0.063 in. +/-0.005
- 5. All copper weight = 1oz
- 6. Position Accuracy = +/- 0.0015
- 7. Apply Blue Enthone soldermask to both sides of board  
separate artwork for bottom and top
- 8. Apply White LPI silkscreen to top side of board
- 9. Warpage = +/- 0.005 per linear inch max.
- 10. SMOBC
- 11. All holes are plated unless otherwise stated

Unless otherwise specified, Dimensions are in inches

Tolerances:   Corners = 0.075 R Max  
                  Angles = +/- 5 degrees

Hole Diameters:   <=0.080 +/-0.003  
                          >0.080 = +/- 0.004

Dimensional limits apply after plating and coating



Fab Notes

- 1. All plated through holes to be chemically cleaned
- 2. End item to meet or exceed IPC-A-600
- 3. Material: FR-370HR
- 4. Finished Thickness = 0.063 in. +/-0.005
- 5. All copper weight = 1oz
- 6. Position Accuracy = +/- 0.0015
- 7. Apply Blue Enthone soldermask to both sides of board  
separate artwork for bottom and top
- 8. Apply White LPI silkscreen to top side of board
- 9. Warpage = +/- 0.005 per linear inch max.
- 10. SMOBC
- 11. All holes are plated unless otherwise stated

Unless otherwise specified, Dimensions are in inches

Tolerances:   Corners = 0.075 R Max  
                  Angles = +/- 5 degrees

Hole Diameters:   <=0.080 +/-0.003  
                          >0.080 = +/- 0.004

Dimensional limits apply aftere plating and coating



Fab Notes

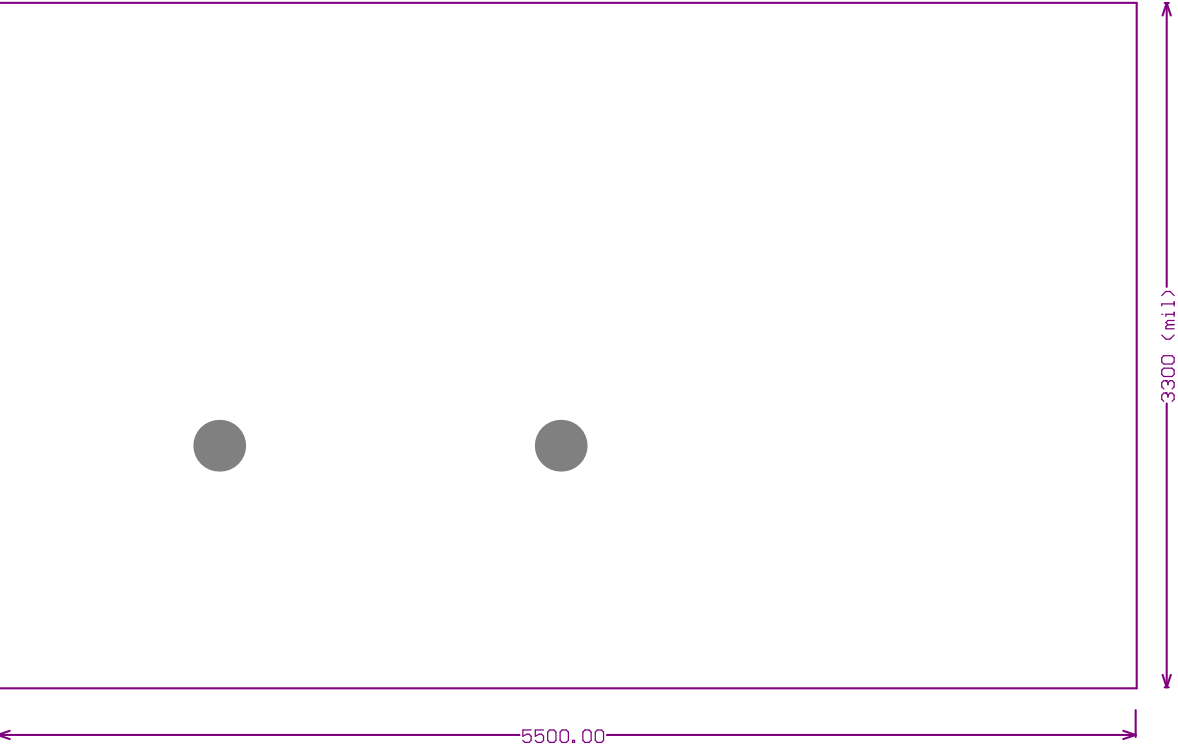
- 1. All plated through holes to be chemically cleaned
- 2. End item to meet or exceed IPC-A-600
- 3. Material: FR-370HR
- 4. Finished Thickness = 0.063 in. +/-0.005
- 5. All copper weight = 1oz
- 6. Position Accuracy = +/- 0.0015
- 7. Apply Blue Enthone soldermask to both sides of board  
separate artwork for bottom and top
- 8. Apply White LPI silkscreen to top side of board
- 9. Warpage = +/- 0.005 per linear inch max.
- 10. SMOBC
- 11. All holes are plated unless otherwise stated

Unless otherwise specified, Dimensions are in inches

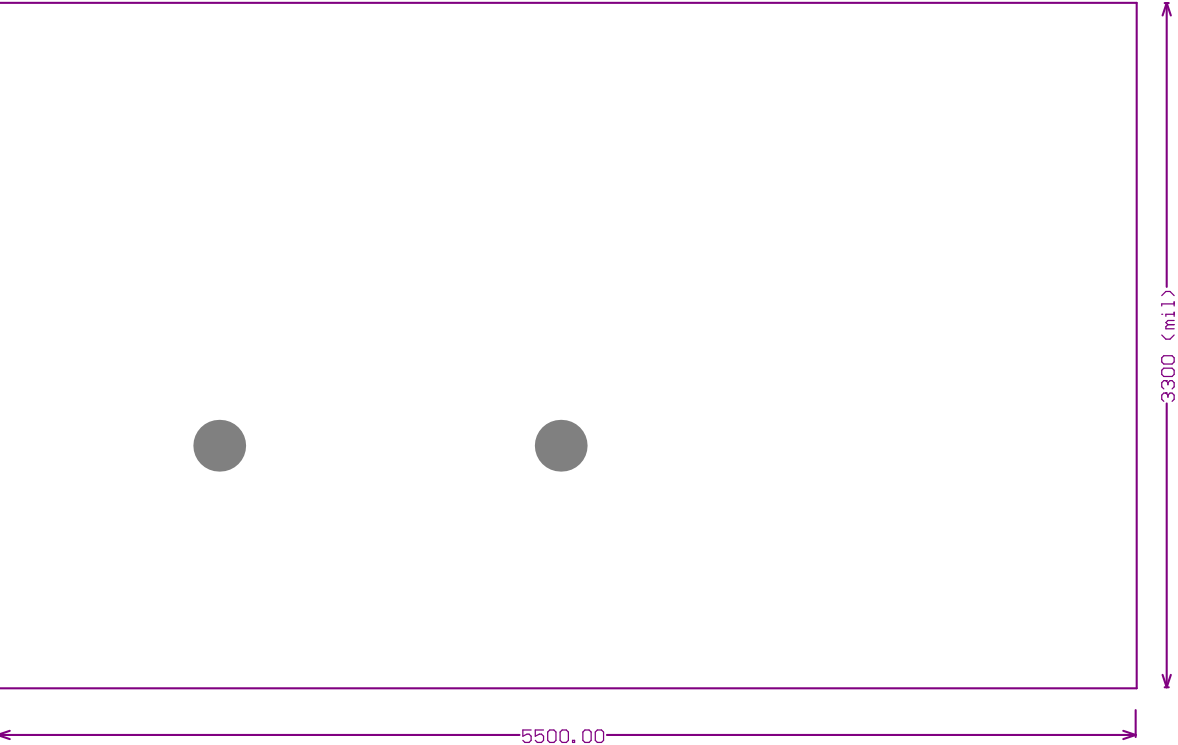
Tolerances:   Corners = 0.075 R Max  
                  Angles = +/- 5 degrees

Hole Diameters:   <=0.080   +/-0.003  
                          >0.080   = +/- 0.004

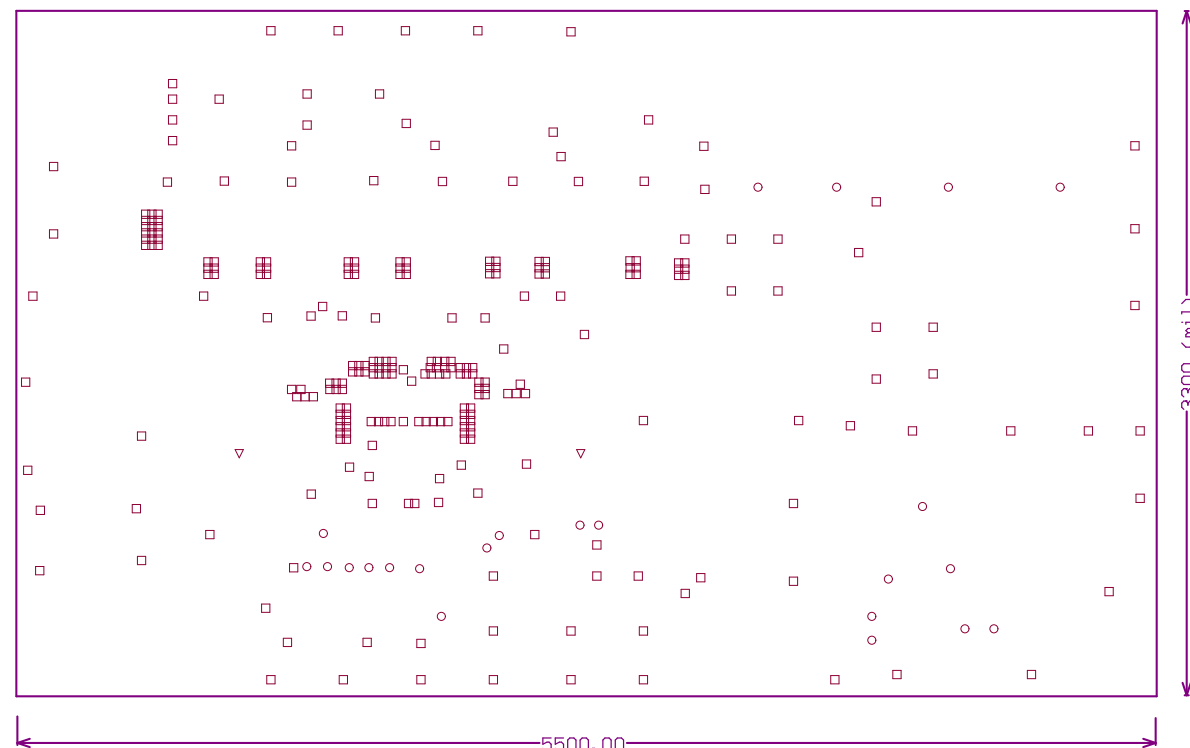
Dimensional limits apply aftere plating and coating



Fab Notes
<div>1. All plated through holes to be chemically cleaned</div> <div>2. End item to meet or exceed IPC-A-600</div> <div>3. Material: FR-370HR</div> <div>4. Finished Thickness = 0.063 in. +/-0.005</div> <div>5. All copper weight = 1oz</div> <div>6. Position Accuracy = +/- 0.0015</div> <div>7. Apply Blue Enthone soldermask to both sides of board separate artwork for bottom and top</div> <div>8. Apply White LPI silkscreen to top side of board</div> <div>9. Warpage = +/- 0.005 per linear inch max.</div> <div>10. SMOBC</div> <div>11. All holes are plated unless otherwise stated</div>
<div>Unless otherwise specified, Dimensions are in inches</div> <div>Tolerances:   Corners = 0.075 R Max                   Angles = +/- 5 degrees</div> <div>Hole Diameters:   &lt;=0.080   +/-0.003                           &gt;0.080   = +/- 0.004</div> <div>Dimensional limits apply aftere plating and coating</div>



Fab Notes
<div>1. All plated through holes to be chemically cleaned</div> <div>2. End item to meet or exceed IPC-A-600</div> <div>3. Material: FR-370HR</div> <div>4. Finished Thickness = 0.063 in. +/-0.005</div> <div>5. All copper weight = 1oz</div> <div>6. Position Accuracy = +/- 0.0015</div> <div>7. Apply Blue Enthone soldermask to both sides of board separate artwork for bottom and top</div> <div>8. Apply White LPI silkscreen to top side of board</div> <div>9. Warpage = +/- 0.005 per linear inch max.</div> <div>10. SMOBC</div> <div>11. All holes are plated unless otherwise stated</div>
<div>Unless otherwise specified, Dimensions are in inches</div> <div>Tolerances:   Corners = 0.075 R Max                   Angles = +/- 5 degrees</div> <div>Hole Diameters:   &lt;=0.080   +/-0.003                           &gt;0.080   = +/- 0.004</div> <div>Dimensional limits apply aftere plating and coating</div>



## Fab Notes

1. All plated through holes to be chemically cleaned
2. End item to meet or exceed IPC-A-600
3. Material: FR-370HR
4. Finished Thickness = 0.063 in. +/-0.005
5. All copper weight = 1oz
6. Position Accuracy = +/- 0.0015
7. Apply Blue Enthone soldermask to both sides of board  
separate artwork for bottom and top
8. Apply White LPI silkscreen to top side of board
9. Warpage = +/- 0.005 per linear inch max.
10. SMOBC
11. All holes are plated unless otherwise stated

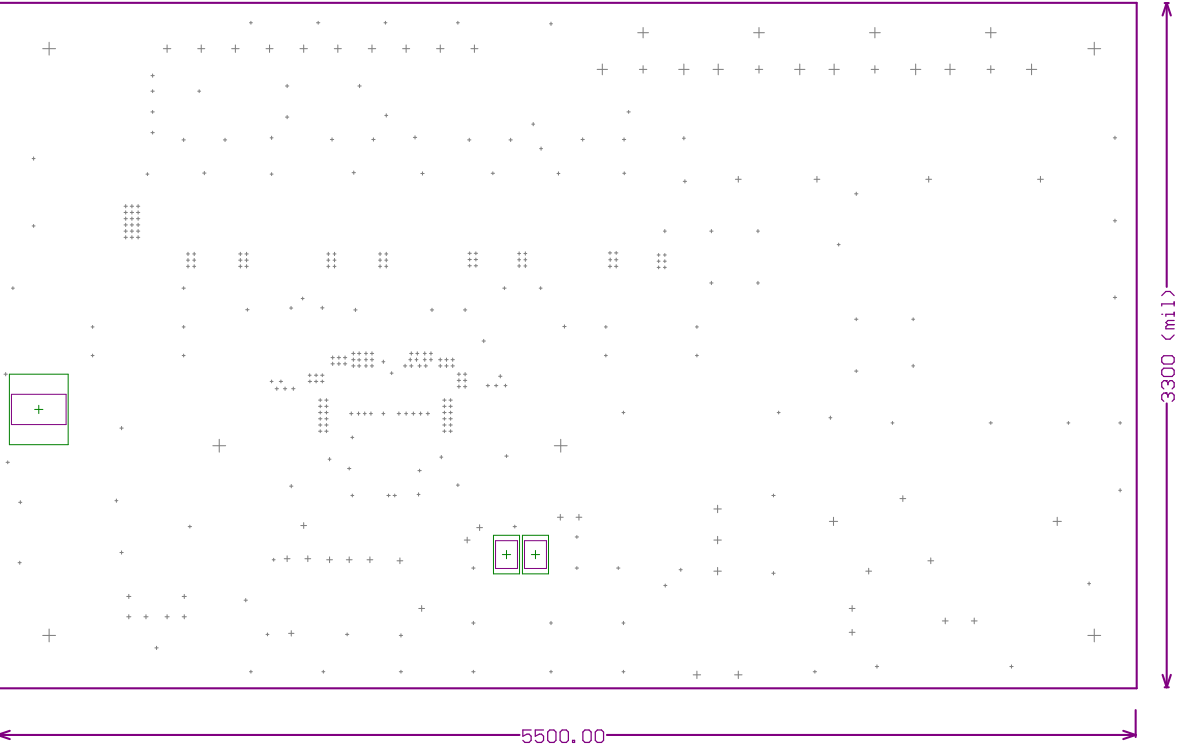
Unless otherwise specified, Dimensions are in inches

Tolerances: Corners = 0.075 R Max  
Angles = +/- 5 degrees

Hole Diameters: <=0.080 +/-0.003  
>0.080 = +/- 0.004

Dimensional limits apply after plating and coating





### Fab Notes

1. All plated through holes to be chemically cleaned
2. End item to meet or exceed IPC-A-600
3. Material: FR-370HR
4. Finished Thickness = 0.063 in. +/-0.005
5. All copper weight = 1oz
6. Position Accuracy = +/- 0.0015
7. Apply Blue Enthone soldermask to both sides of board  
separate artwork for bottom and top
8. Apply White LPI silkscreen to top side of board
9. Warpage = +/- 0.005 per linear inch max.
10. SMOBC
11. All holes are plated unless otherwise stated

Unless otherwise specified, Dimensions are in inches

Tolerances: Corners = 0.075 R Max  
Angles = +/- 5 degrees

Hole Diameters: <=0.080 +/-0.003  
>0.080 = +/- 0.004

Dimensional limits apply after plating and coating