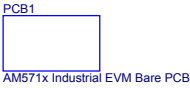


ARM MPU AM571X Industrial EVM  
ABC Package

- See the Hardware User Guide for board details
- See the Errata Document for design Issues
- See the PCB Build Specification for PCB Details




<Variant Name>

Catalog Processors

Texas Instruments, Inc.

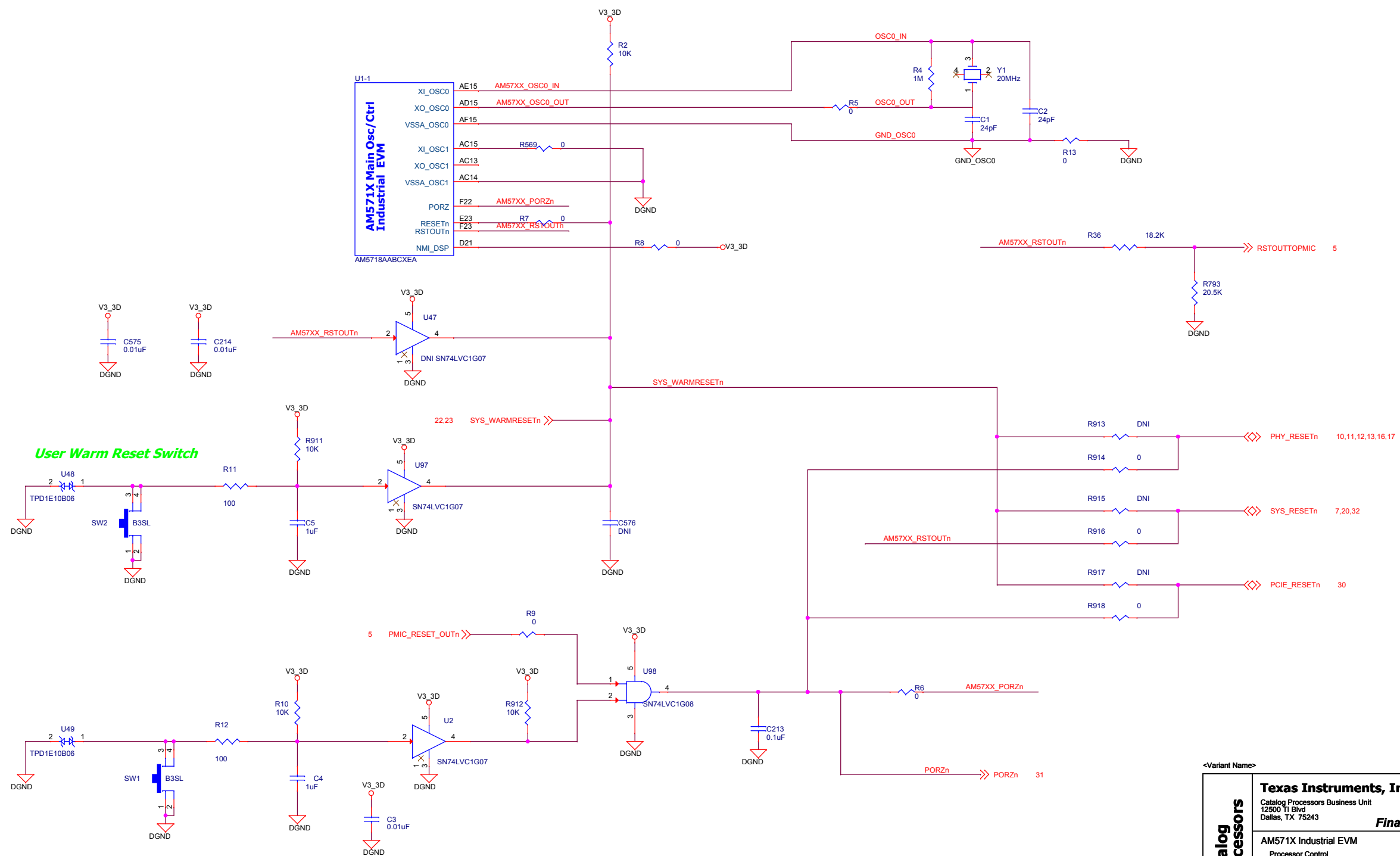
Catalog Processors Business Unit  
12500 TI Blvd  
Dallas, TX 75243

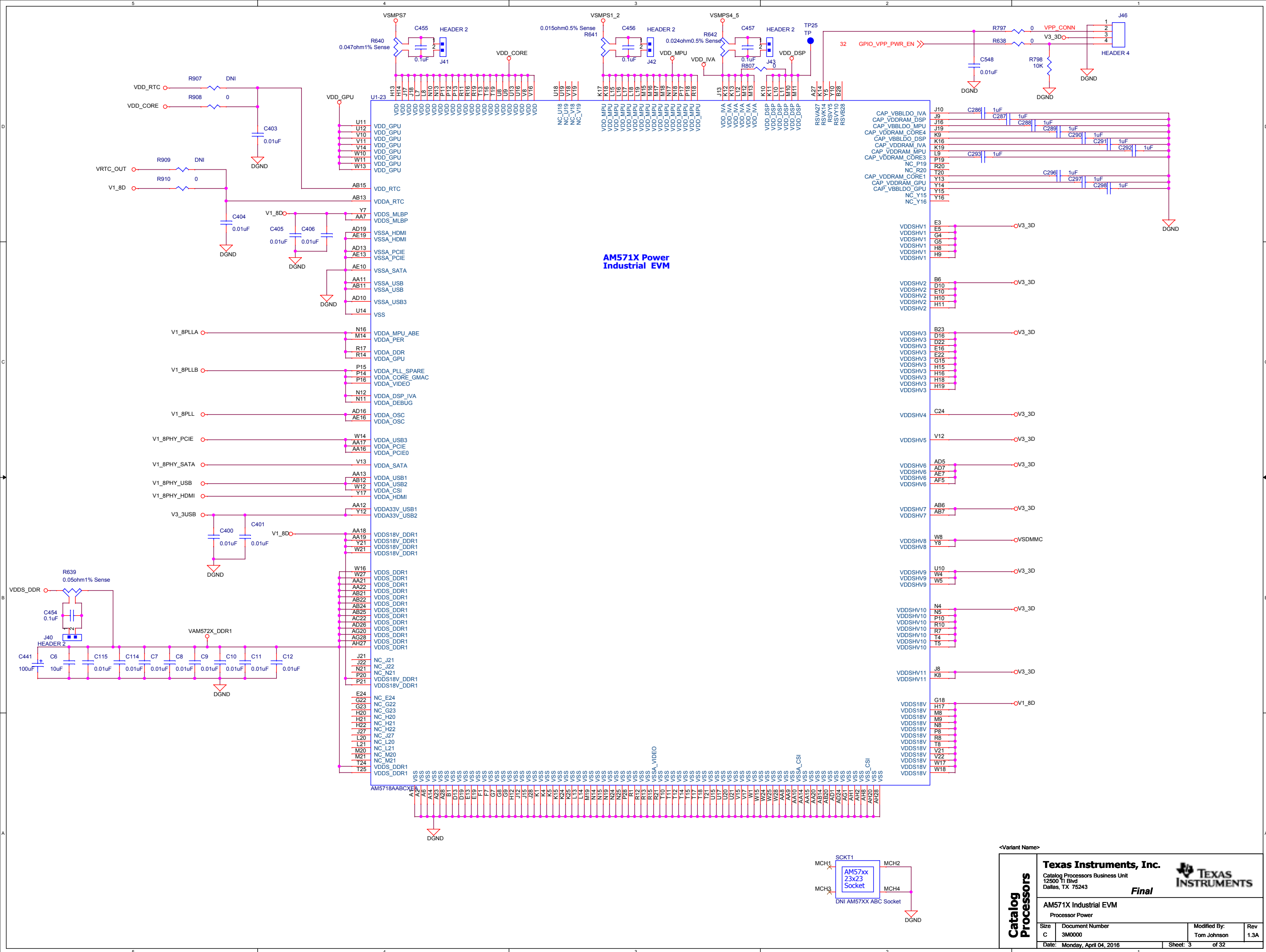


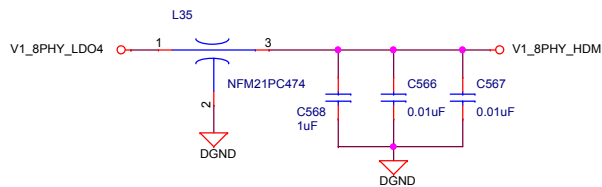
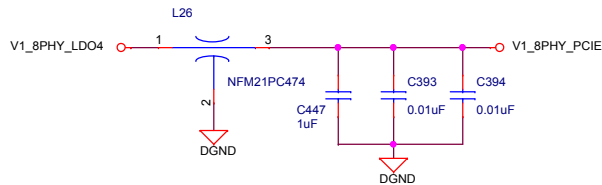
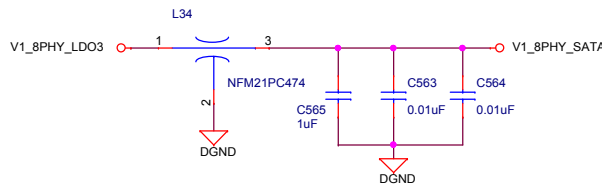
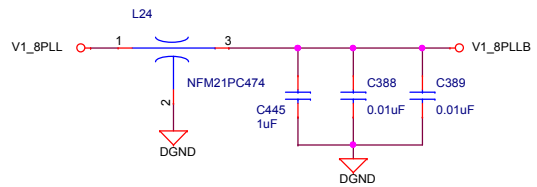
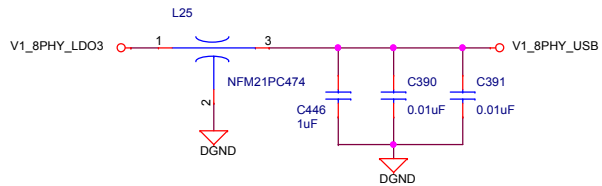
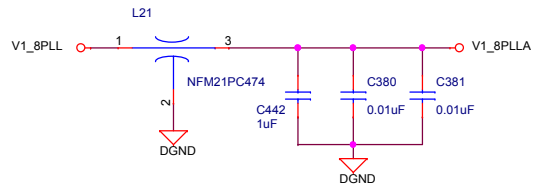
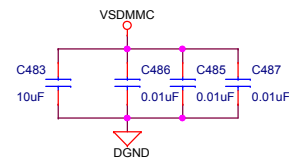
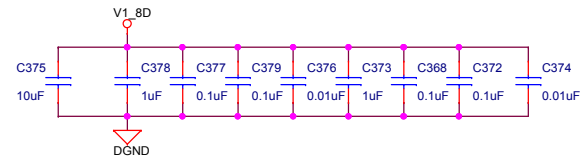
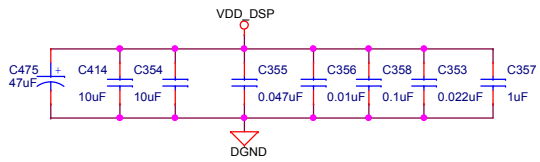
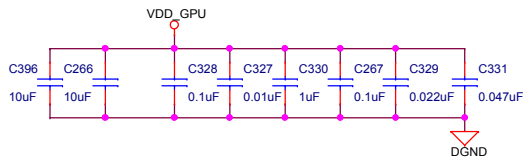
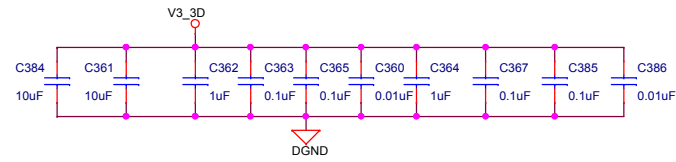
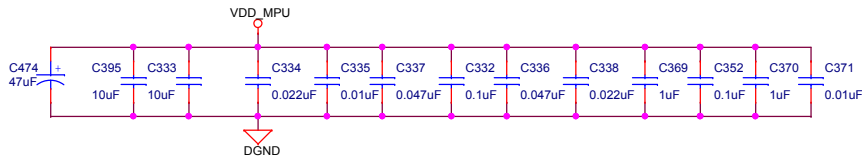
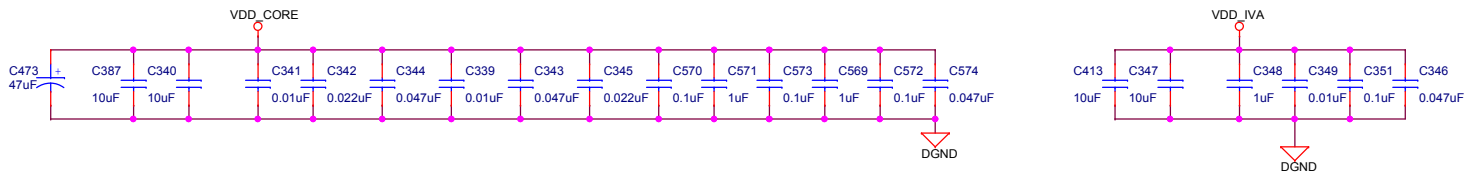
AM571X Industrial EVM

Title Page

Size	Document Number	Modified By:	Rev
C	3M0000	Tom Johnson	1.3A
Date: Monday, April 04, 2016		Sheet: 1 of 32	

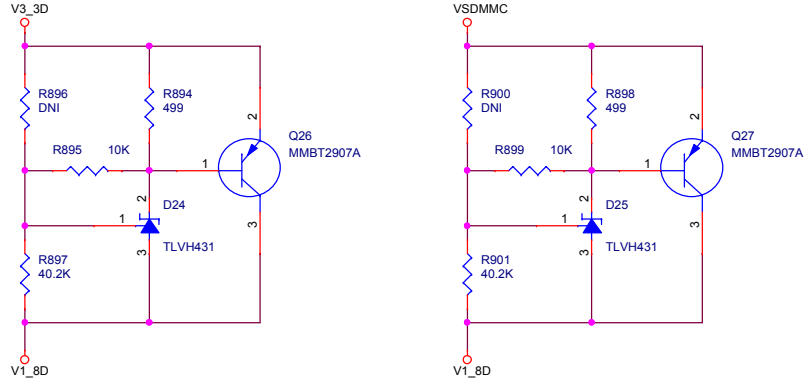
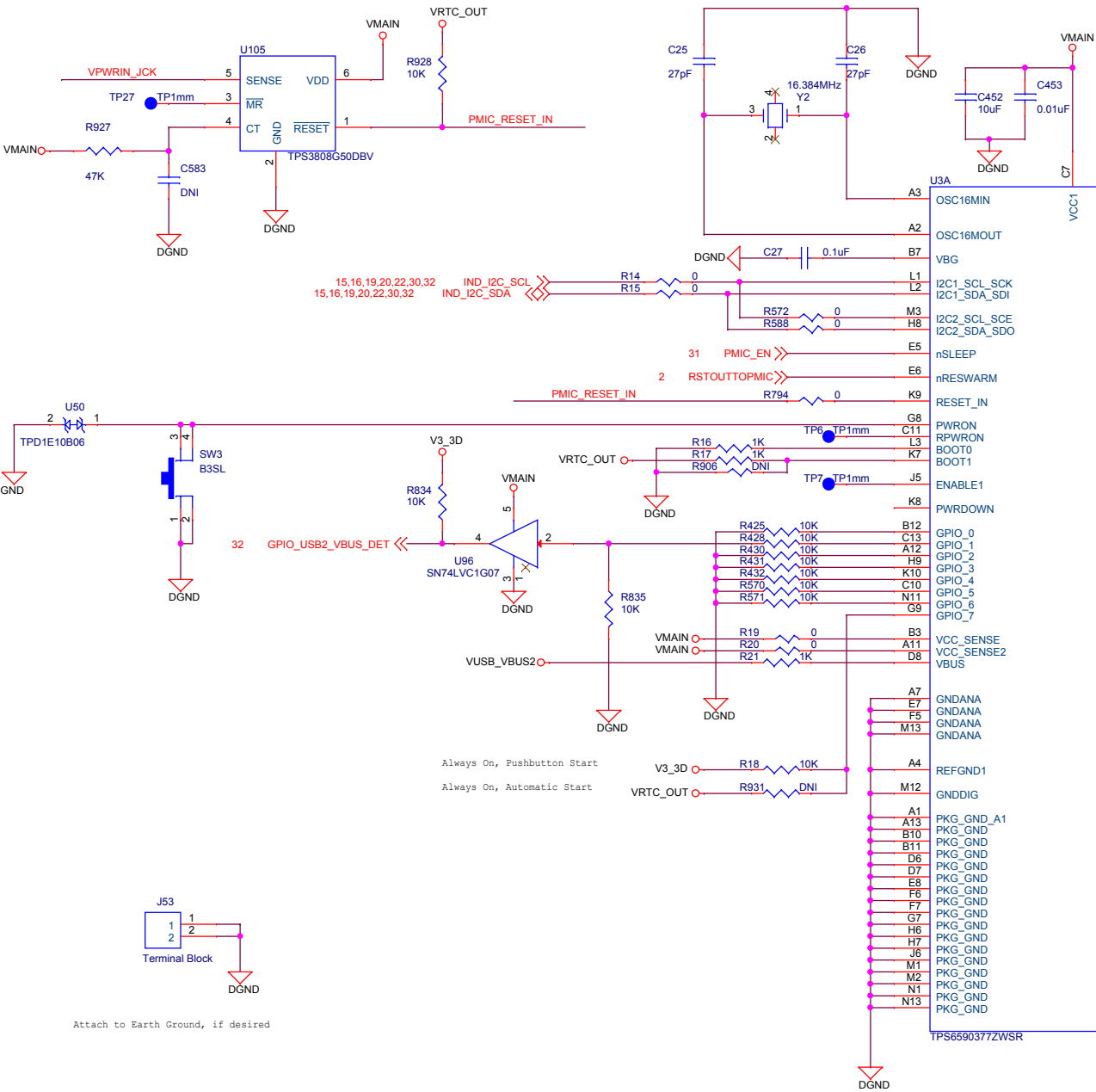
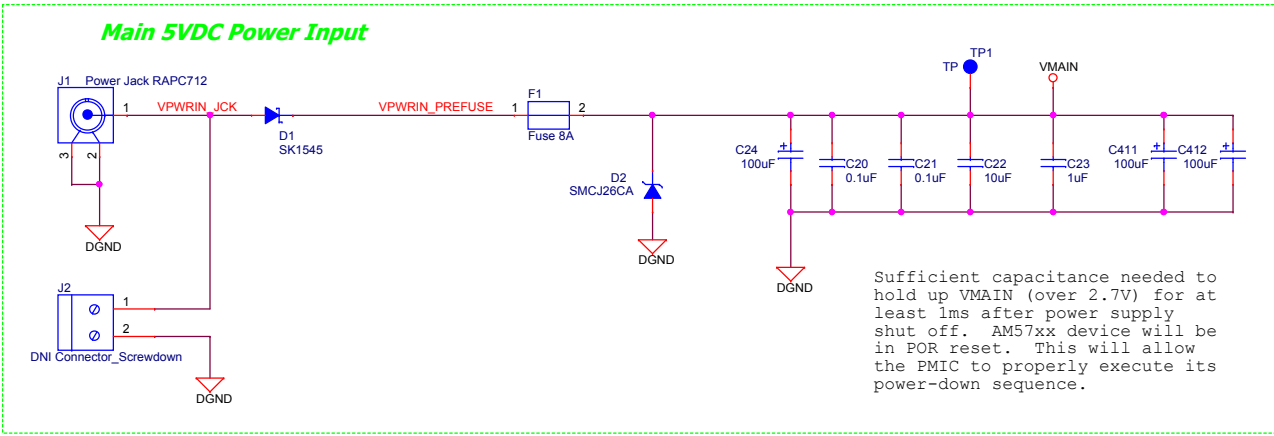




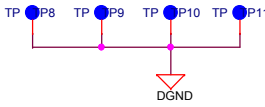
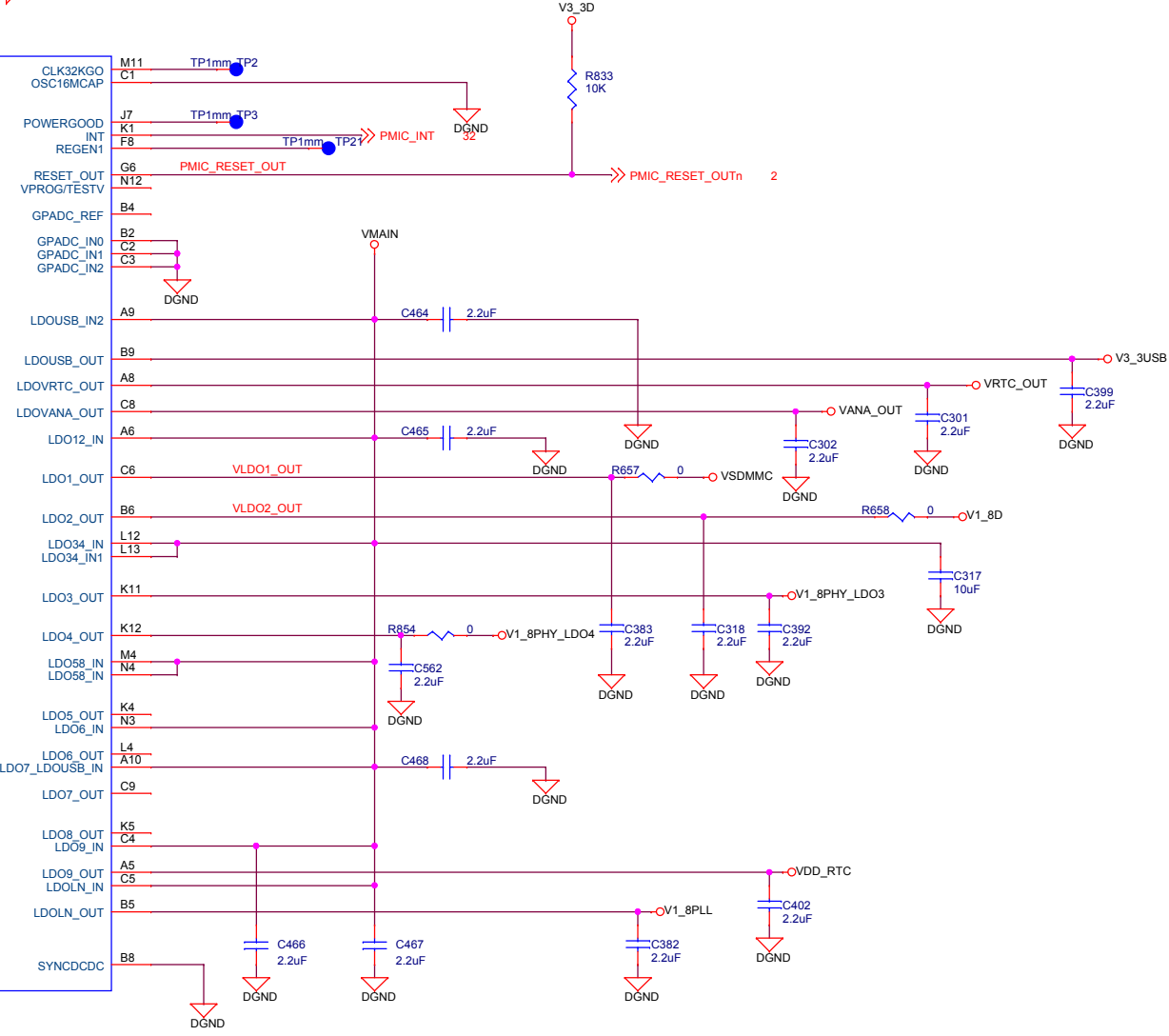


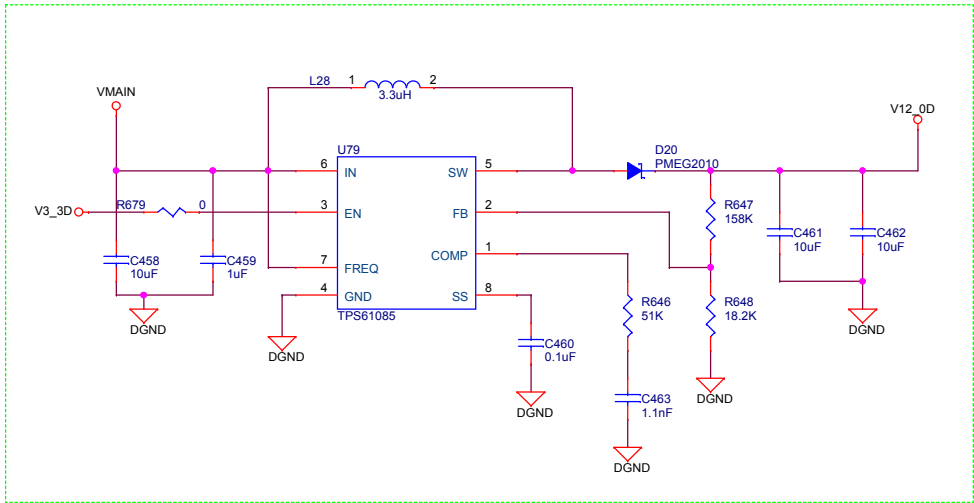
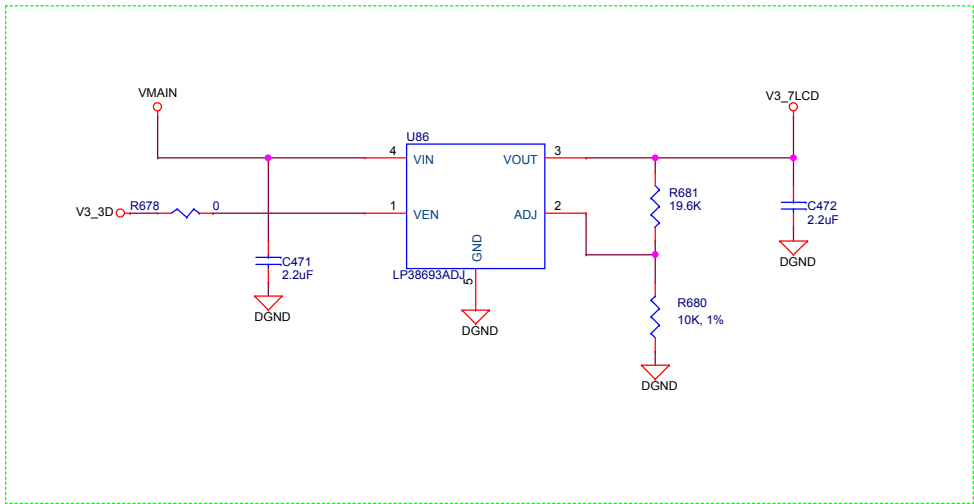
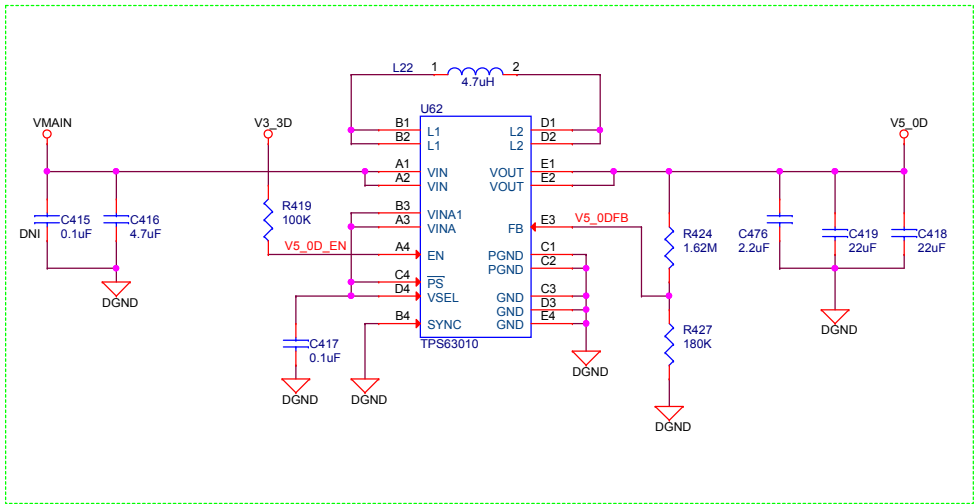
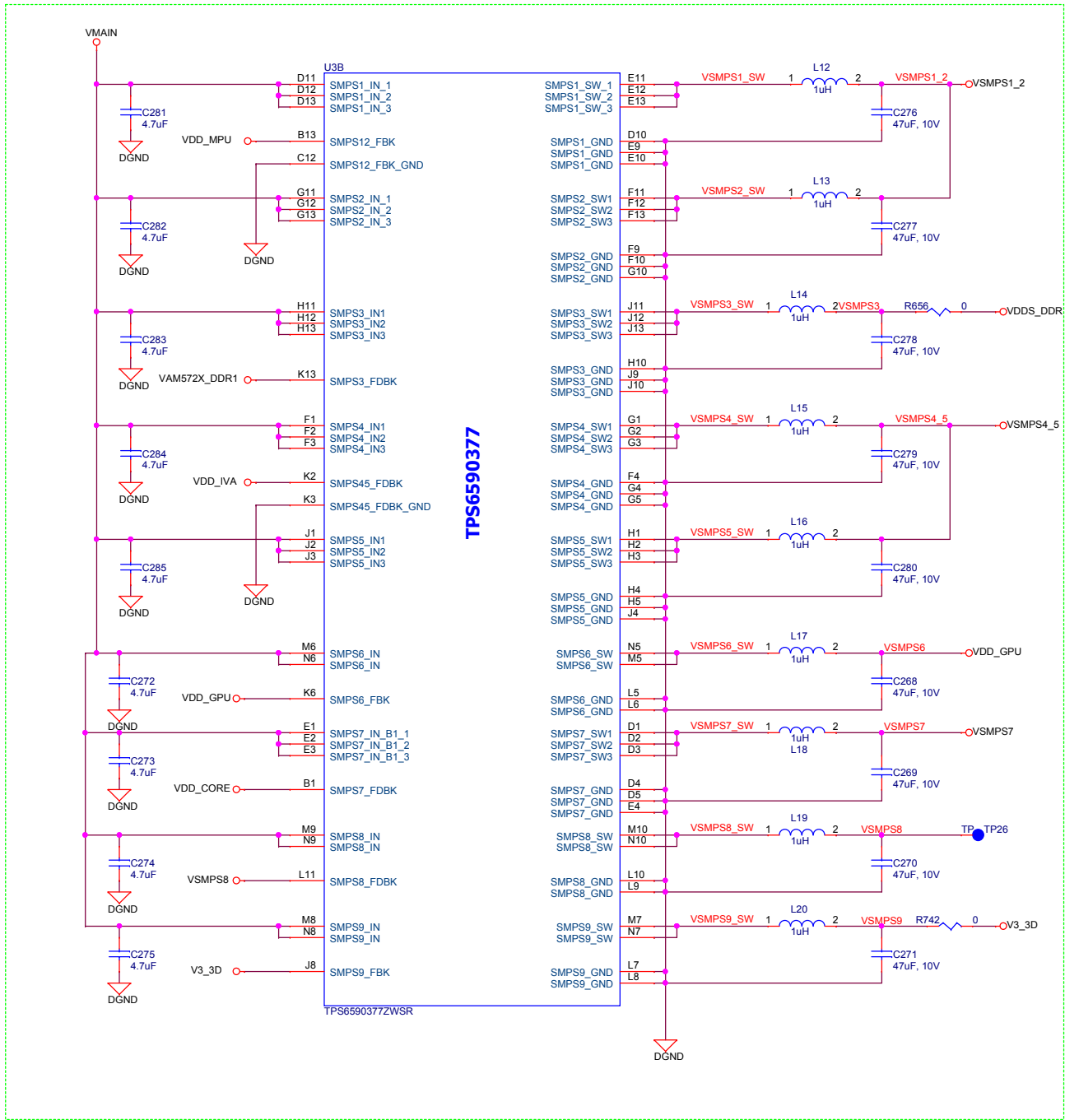
<Variant Name>

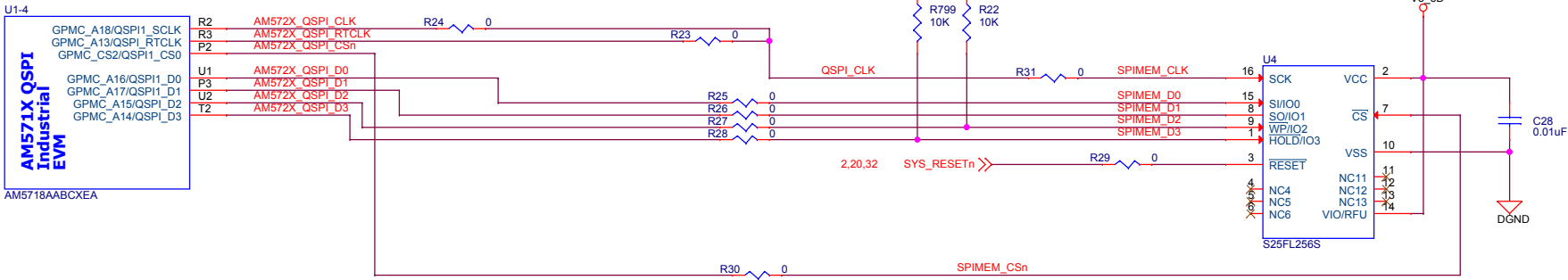
Catalog Processors	<b>Texas Instruments, Inc.</b>		
	Catalog Processors Business Unit 12500 TI Blvd Dallas, TX 75243		
	<b>Final</b>		
	AM571X Industrial EVM Processor Power		
	Size C	Document Number 3M0000	Modified By: Tom Johnson
Date: Monday, April 04, 2016		Sheet: 4	Rev 1.3A
		of 32	



It has been later determined that the clamp circuit on VSDMMC is not sufficient. Therefore, it is no longer required. The power-down sequence defined in the Data Manual must be met.

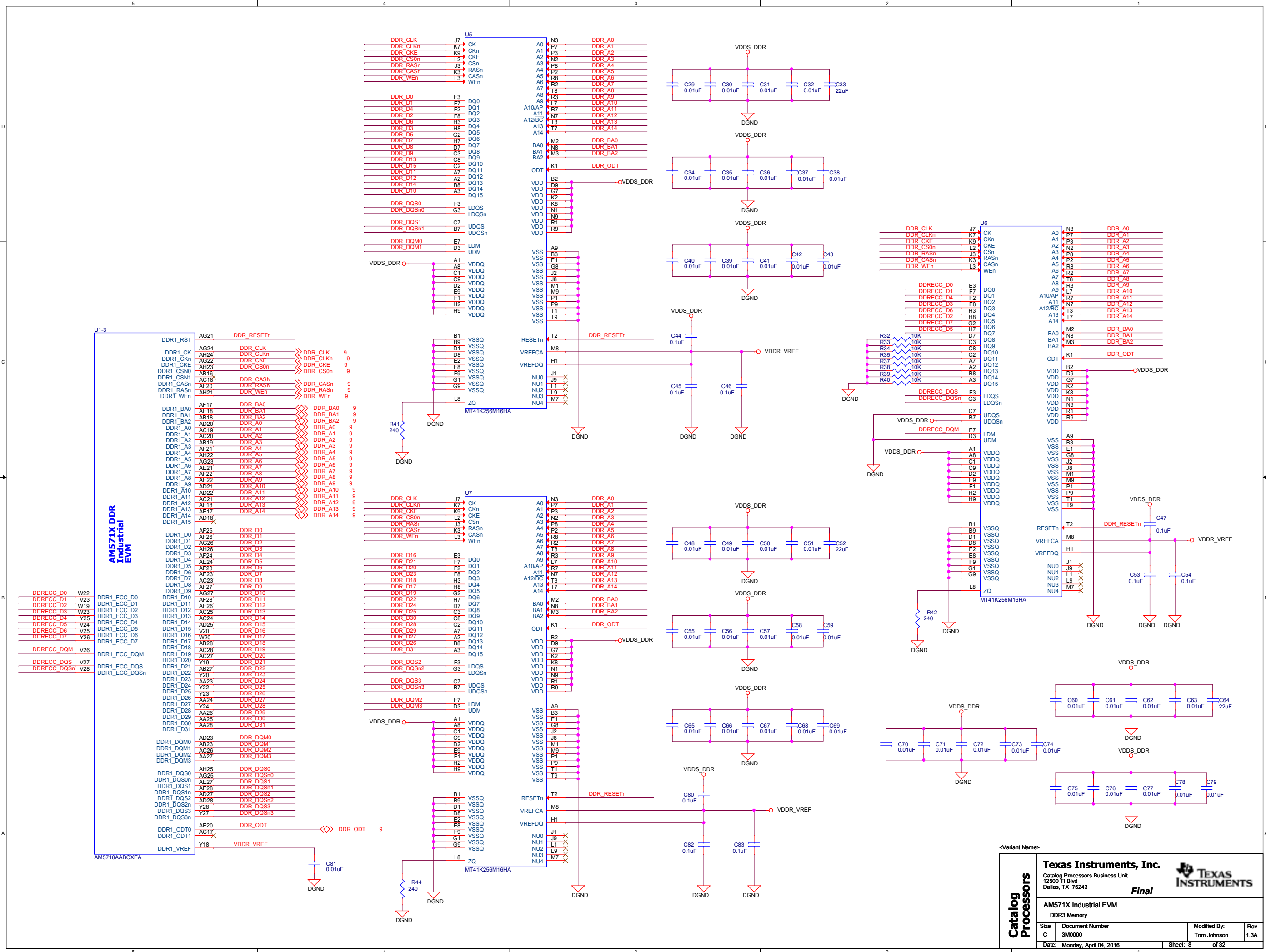




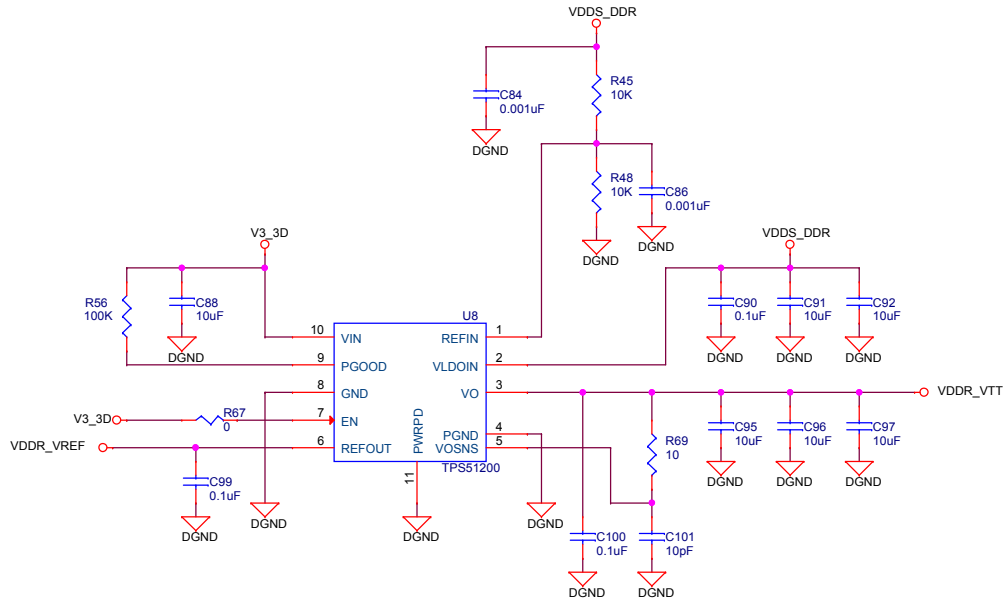
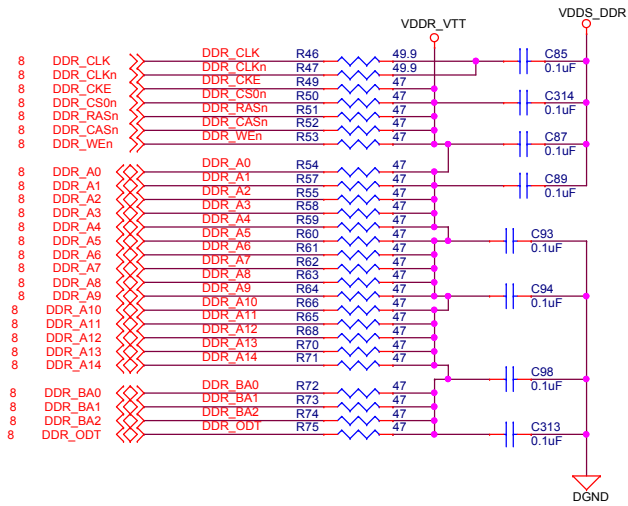


<Variant Name>

Catalog Processors	<b>Texas Instruments, Inc.</b>			
	Catalog Processors Business Unit 12500 TI Blvd Dallas, TX 75243			
	<b>Final</b>			
	AM571X Industrial EVM QSPI NOR Flash Memory			
	Size C	Document Number 3M0000	Modified By: Tom Johnson	Rev 1.3A
Date: Monday, April 04, 2016		Sheet: 7	of 32	

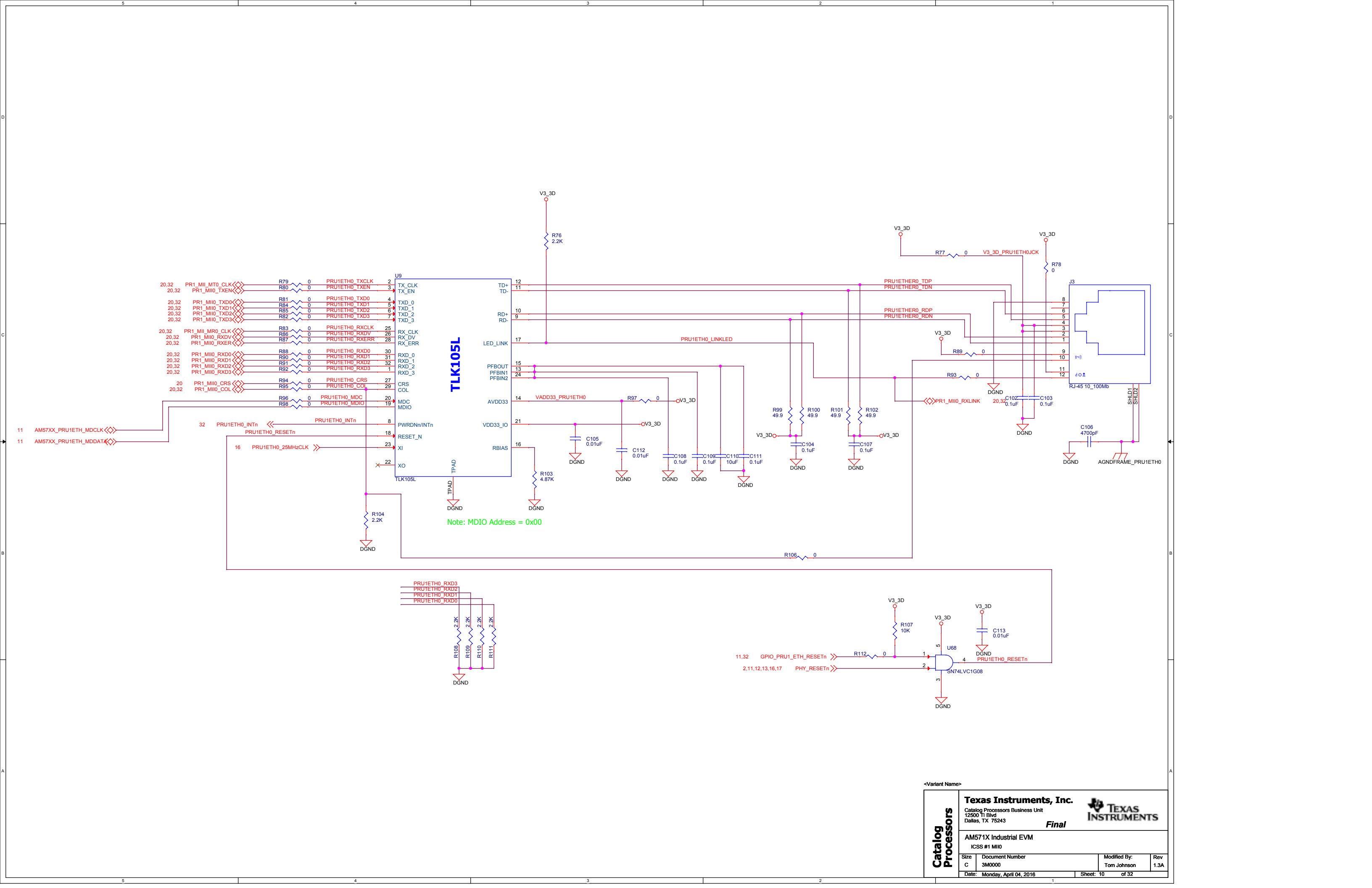


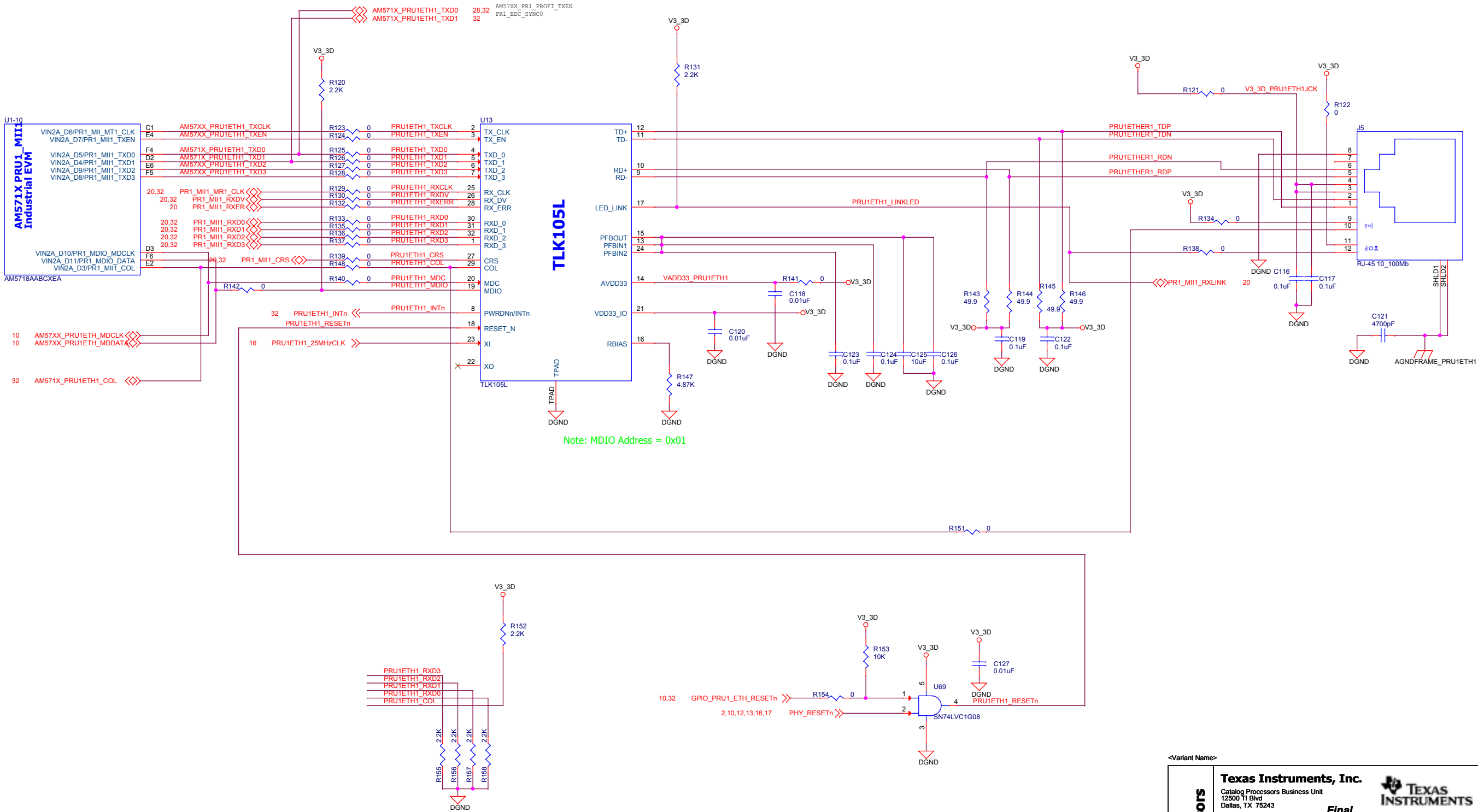


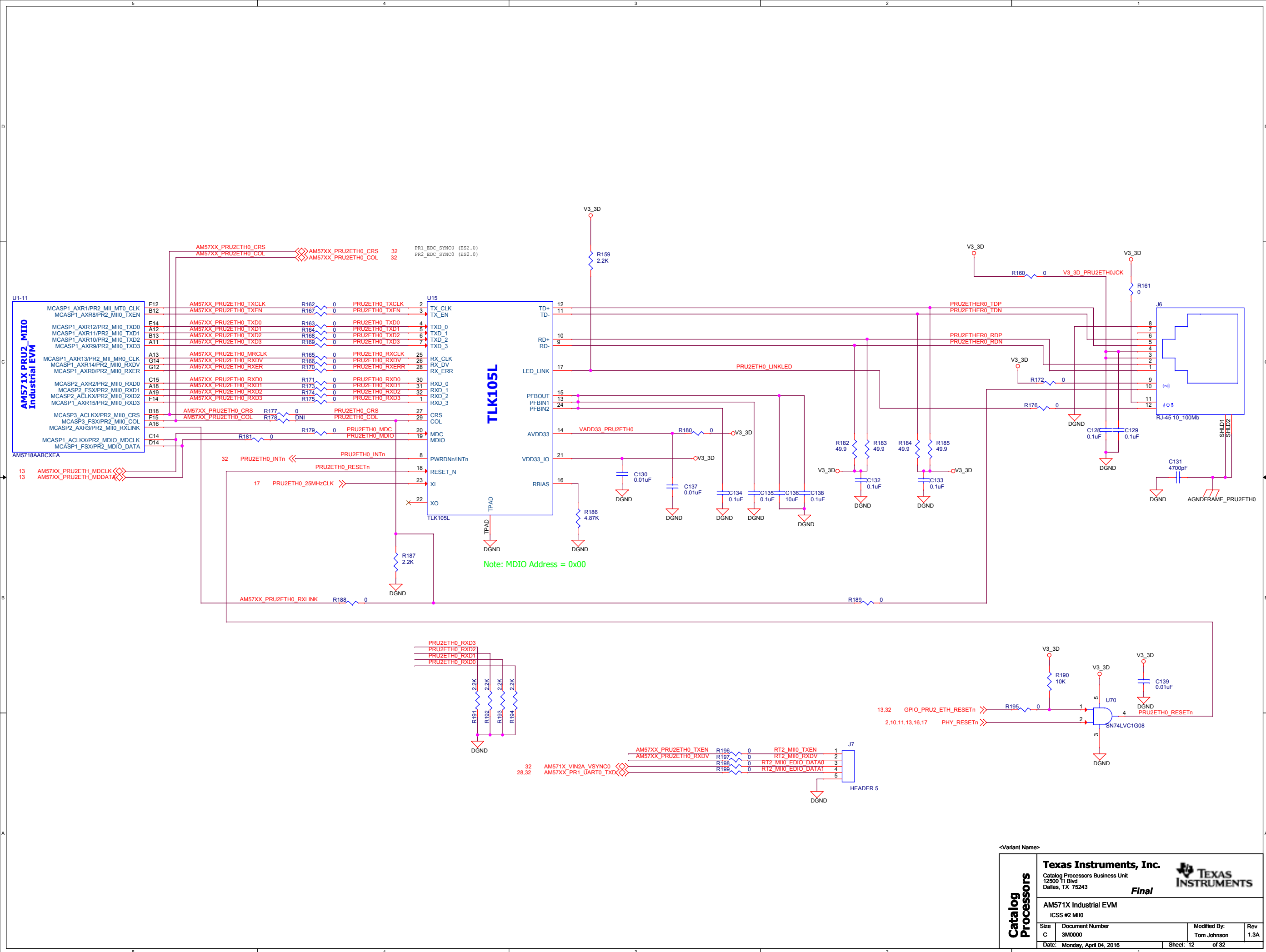


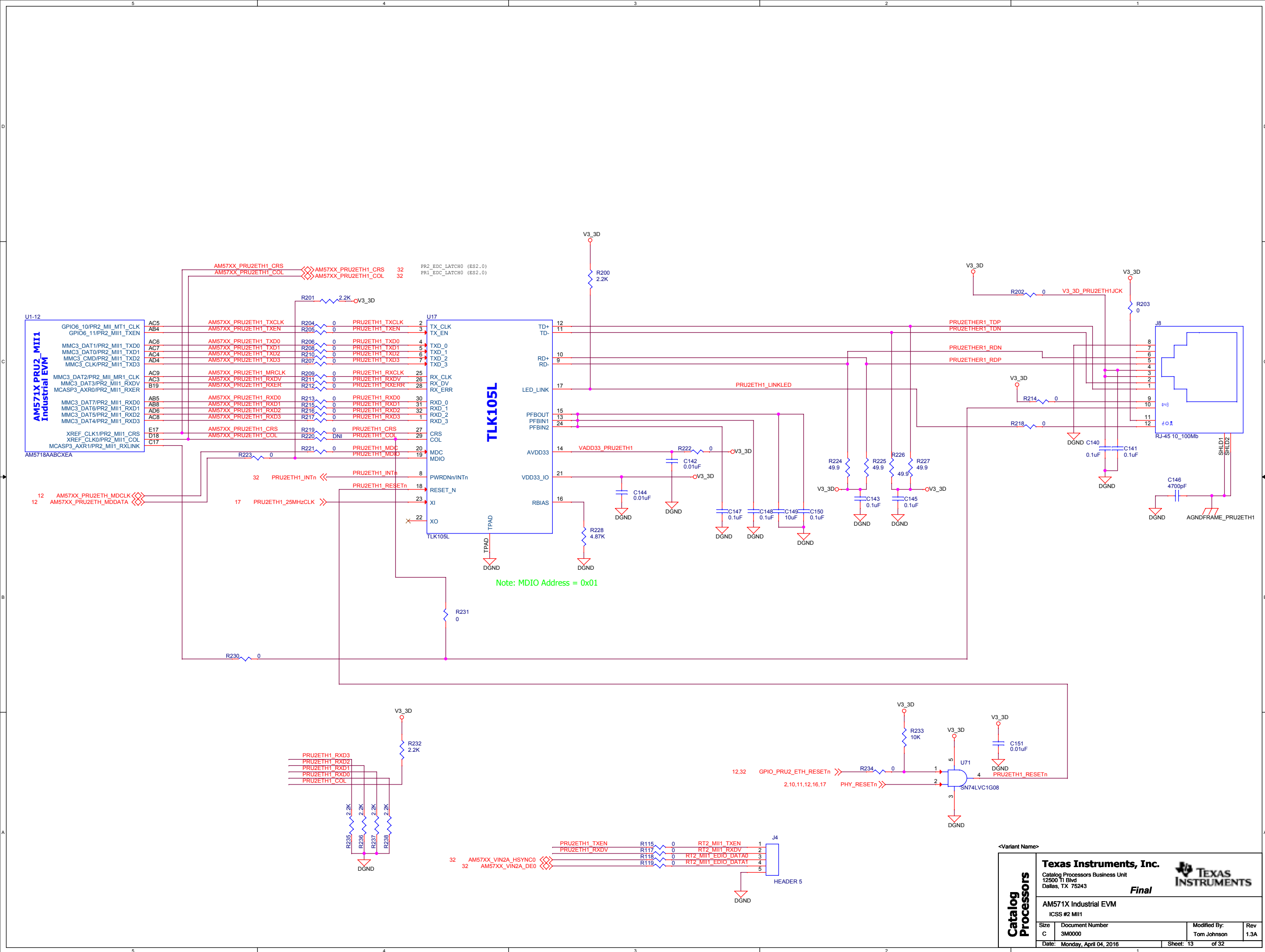
<Variant Name>

Catalog Processors	<b>Texas Instruments, Inc.</b>		
	Catalog Processors Business Unit 12500 TI Blvd Dallas, TX 75243		
	<b>Final</b>		
	AM571X Industrial EVM DDR3 VTT Termination		
	Size C	Document Number 3M0000	Modified By: Tom Johnson
Date: Monday, April 04, 2016		Sheet: 9 of 32	Rev 1.3A

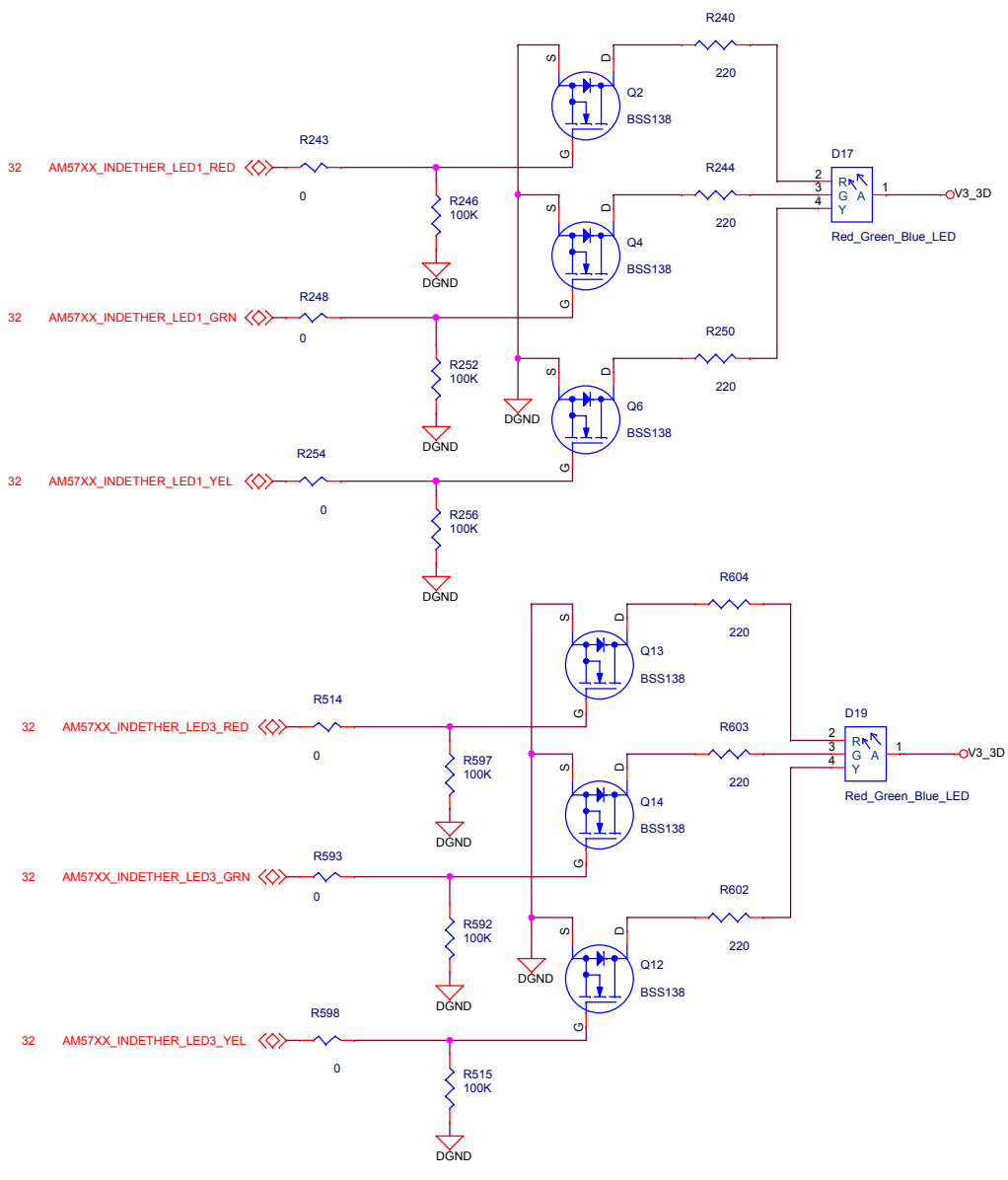
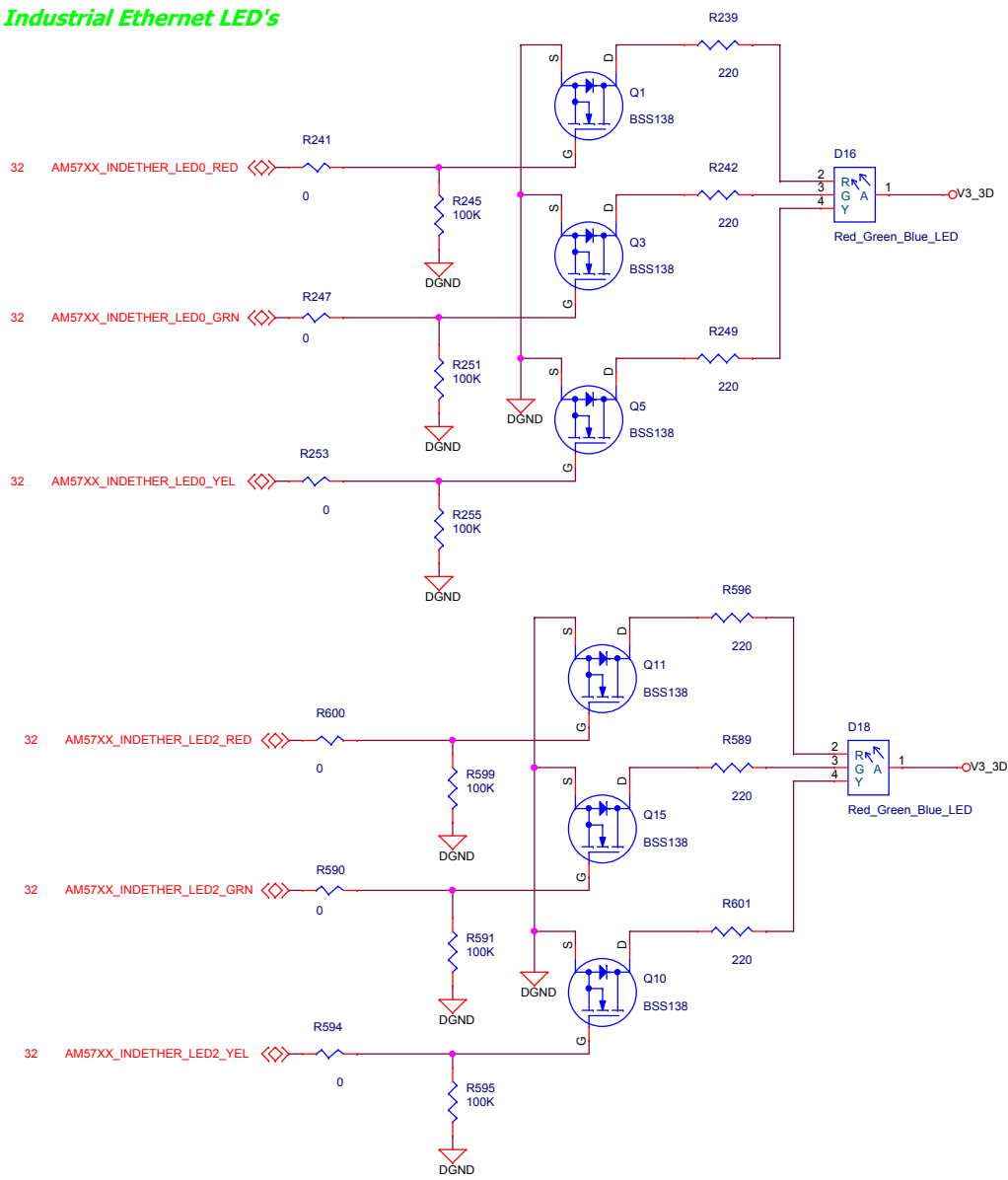




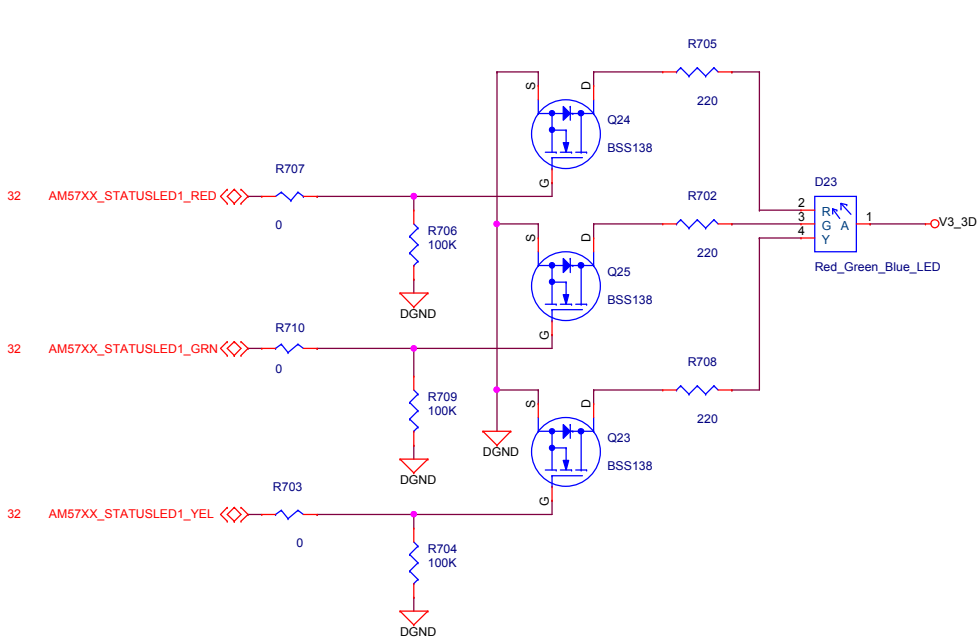
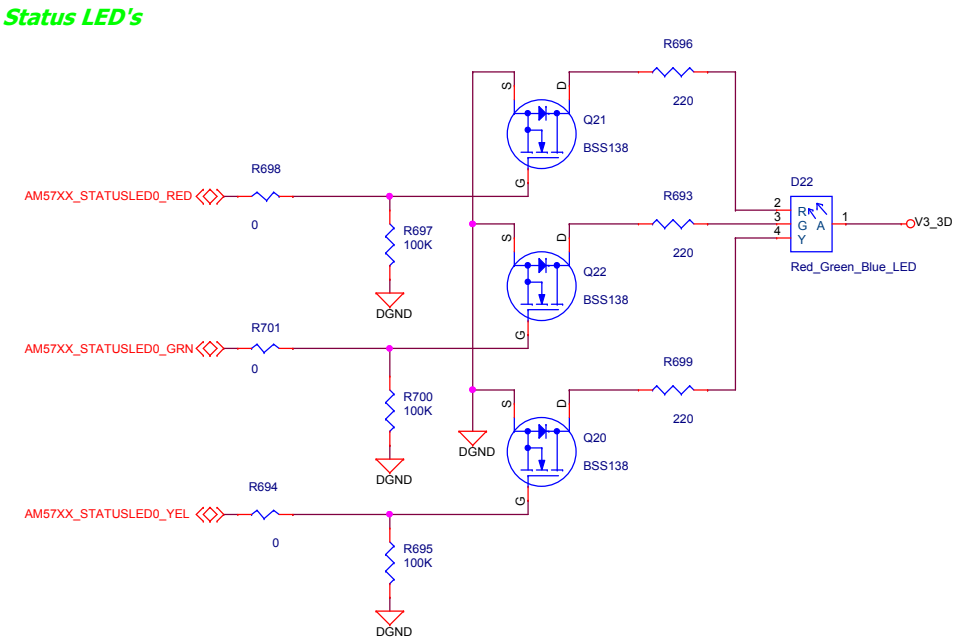




Industrial Ethernet LED's



Status LED's



<Variant Name>

Catalog Processors	Texas Instruments, Inc.		
	Catalog Processors Business Unit 12500 TI Blvd Dallas, TX 75243		
	Final		
	AM571X Industrial EVM Industrial Ethernet LED's/Status LED's		
Size	Document Number	Modified By:	Rev
C	3M0000	Tom Johnson	1.3A
Date:	Monday, April 04, 2016	Sheet: 14	of 32

U1-22

**AM571X Camera #1**  
**Industrial EVM**

AM5718AABCXEA

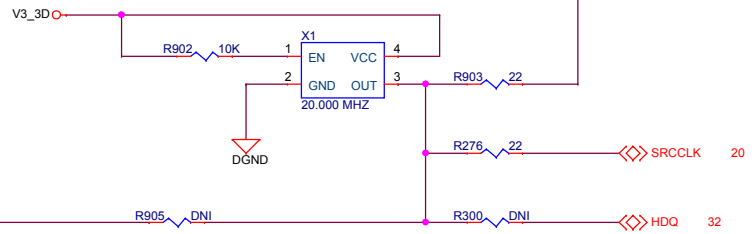
- GPMC\_A10/VIN1B\_CLK1
- GPMC\_A9/VIN1B\_VSYNC1
- GPMC\_A8/VIN1B\_HSYNC1
- GPMC\_A11/VIN1B\_DE1
- GPMC\_A12/VIN1B\_FLD1
- GPMC\_A0/VIN1B\_D0
- GPMC\_A1/VIN1B\_D1
- GPMC\_A2/VIN1B\_D2
- GPMC\_A3/VIN1B\_D3
- GPMC\_A4/VIN1B\_D4
- GPMC\_A5/VIN1B\_D5
- GPMC\_A6/VIN1B\_D6
- GPMC\_A7/VIN1B\_D7
- XREF\_CLK3/CLKOUT3

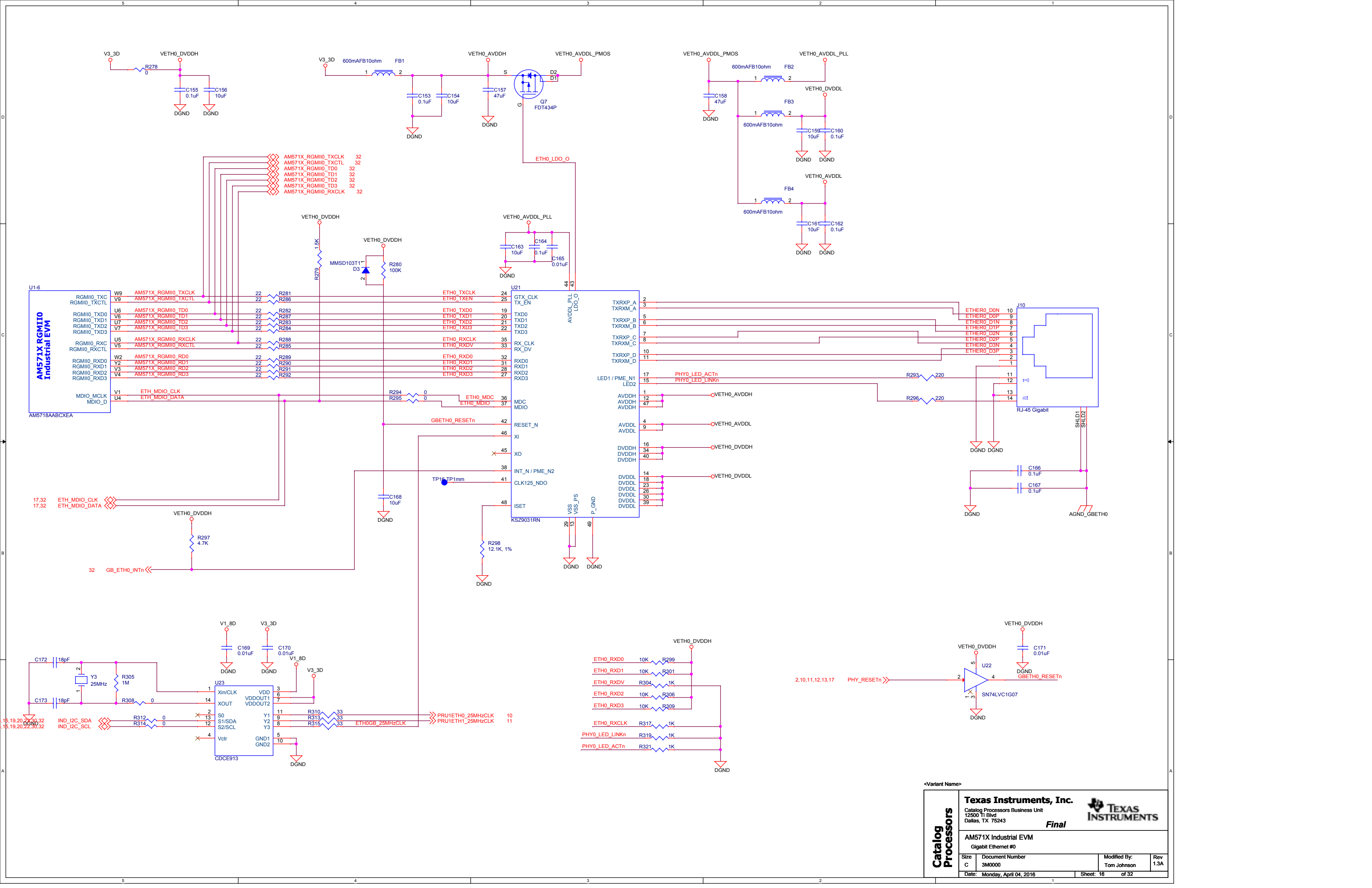
- N9 AM57XX\_VIN1B\_PCLK
- R4 AM57XX\_VIN1B\_VSYNC
- N7 AM57XX\_VIN1B\_HSYNC
- P9 AM57XX\_VIN1B\_DE
- P4 AM57XX\_VIN1B\_FLD
- R6 AM57XX\_VIN1B\_DATA0
- T9 AM57XX\_VIN1B\_DATA1
- T6 AM57XX\_VIN1B\_DATA2
- T7 AM57XX\_VIN1B\_DATA3
- P6 AM57XX\_VIN1B\_DATA4
- R9 AM57XX\_VIN1B\_DATA5
- R5 AM57XX\_VIN1B\_DATA6
- P5 AM57XX\_VIN1B\_DATA7
- C23 AM57XX\_CLKOUT3

- AM57XX\_VIN1B\_DATA0 R260 0
- AM57XX\_VIN1B\_DATA1 R261 0
- AM57XX\_VIN1B\_DATA2 R263 0
- AM57XX\_VIN1B\_PCLK R265 0
- AM57XX\_VIN1B\_DATA3 R267 0
- AM57XX\_VIN1B\_DATA4 R269 0
- AM57XX\_VIN1B\_DATA5 R271 0
- AM57XX\_VIN1B\_DATA5 R273 0

- CAM1\_DATA0
- CAM1\_DATA1
- CAM1\_DATA2
- CAM1\_PCLK
- CAM1\_DATA3
- CAM1\_DATA4
- CAM1\_DATA5
- CAM1\_WEN

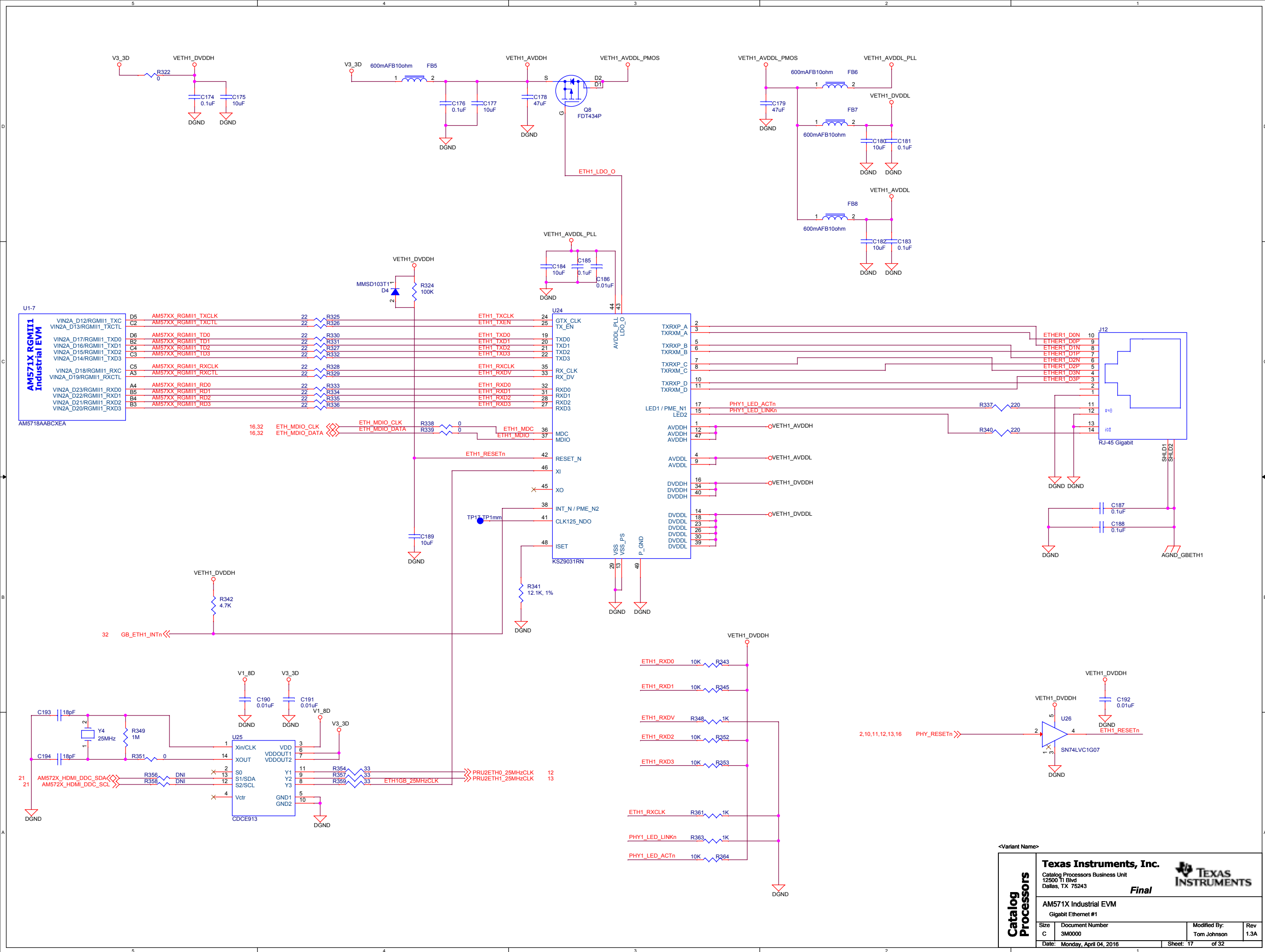
- CAM1\_VSYNC R257 0
- CAM1\_HSYNC R258 0
- CAM1\_DATA6 R262 0
- CAM1\_DATA7 R264 0
- AM57XX\_VIN1B\_DATA6
- AM57XX\_VIN1B\_DATA7
- CAM1\_GIO0
- CAM1\_GIO1
- CAM1\_FIELD R274 0
- R275 0
- R277 0
- CAM\_ENn 32
- IND\_I2C\_SCL 5,16,19,20,22,30,32
- IND\_I2C\_SDA 5,16,19,20,22,30,32

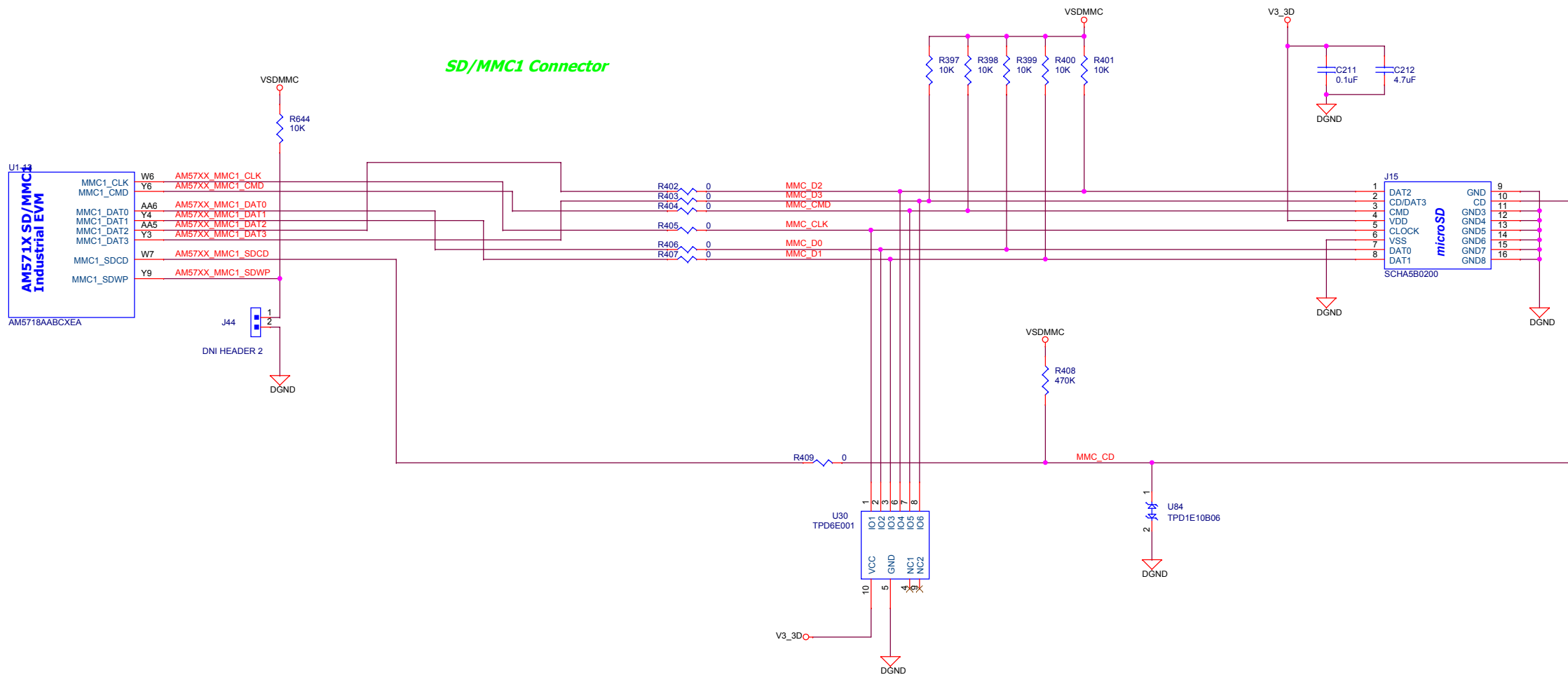


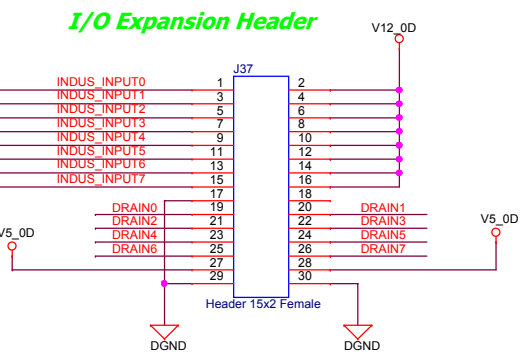
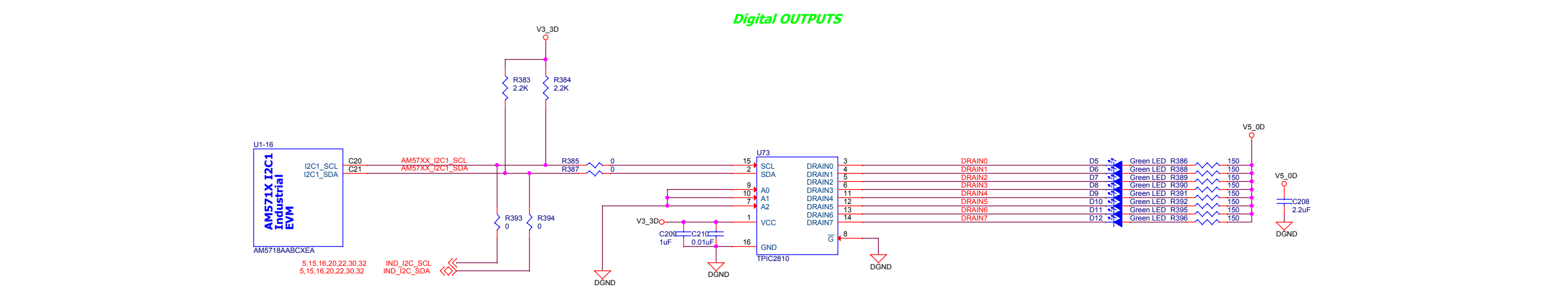
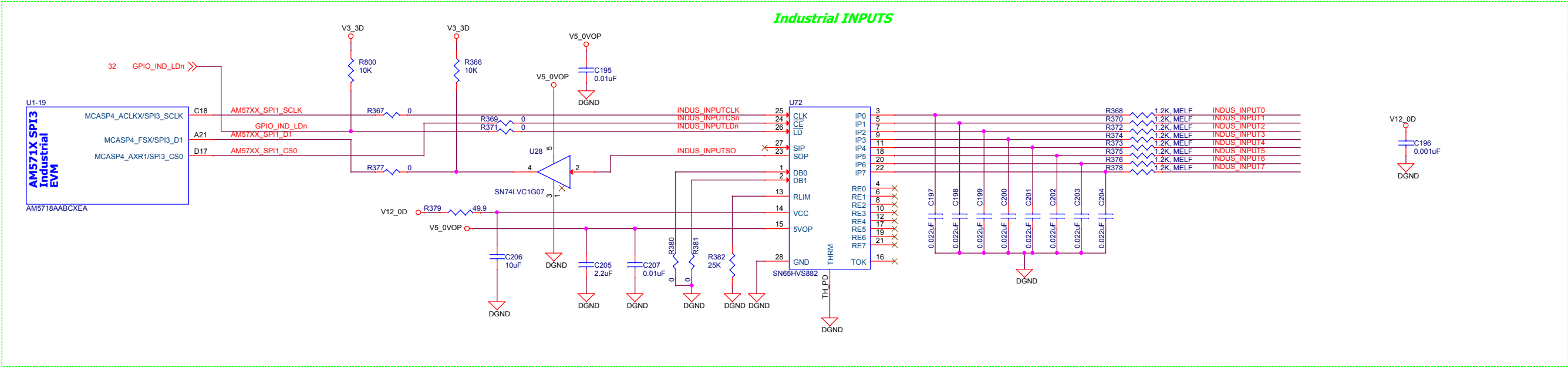


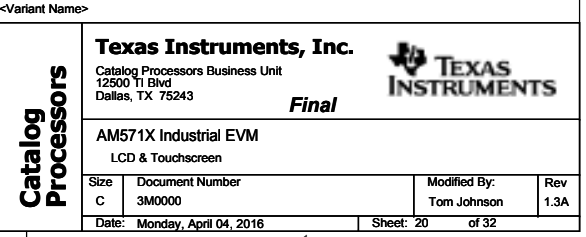
<Variant Name>

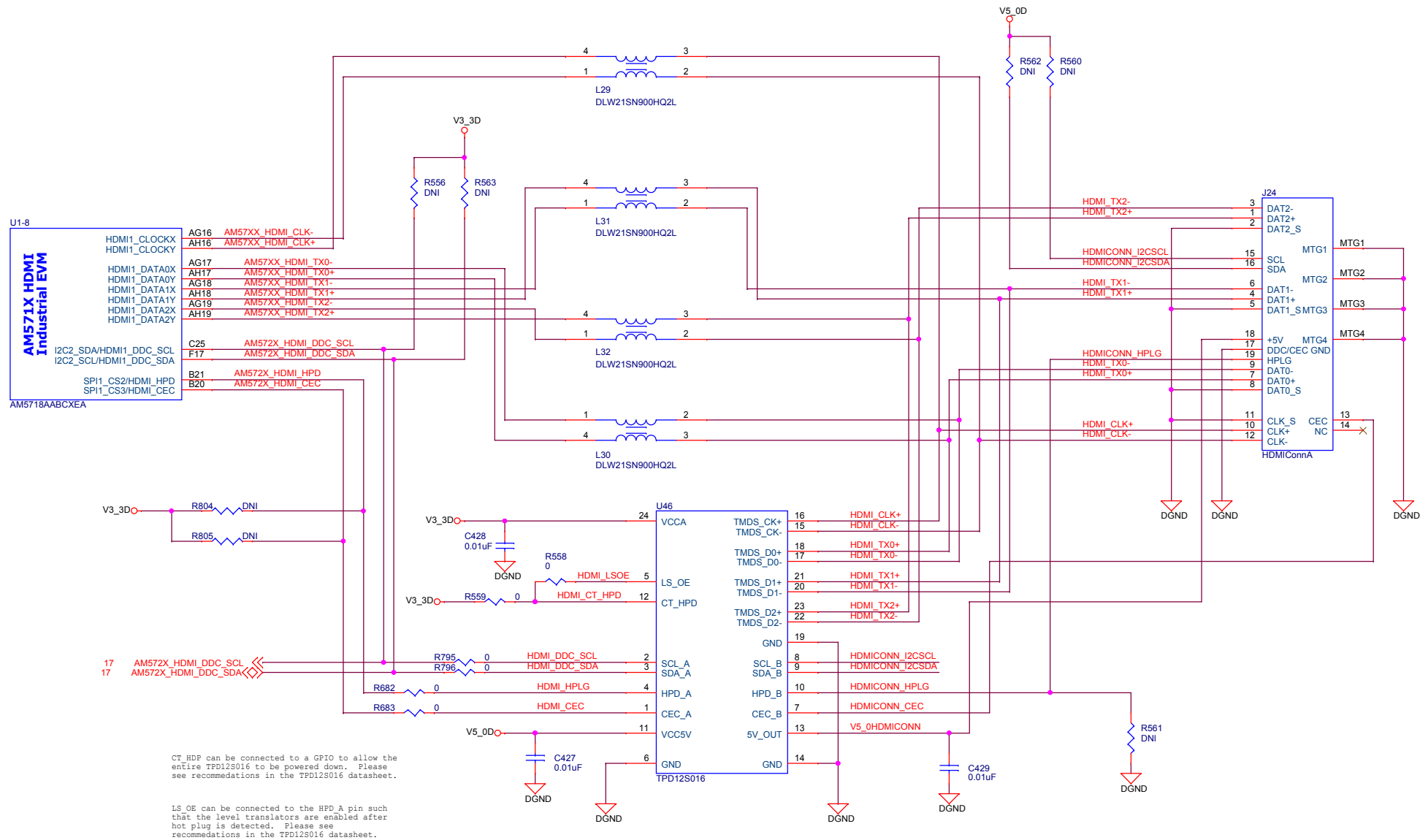












<Variant Name>

Catalog Processors	<b>Texas Instruments, Inc.</b>			
	Catalog Processors Business Unit 12500 TI Blvd Dallas, TX 75243			
	<b>Final</b>			
	AM571X Industrial EVM			
	HDMI			
Size	Document Number	Modified By:	Rev	
C	3M0000	Tom Johnson	1.3A	
Date:	Monday, April 04, 2016	Sheet: 21	of 32	

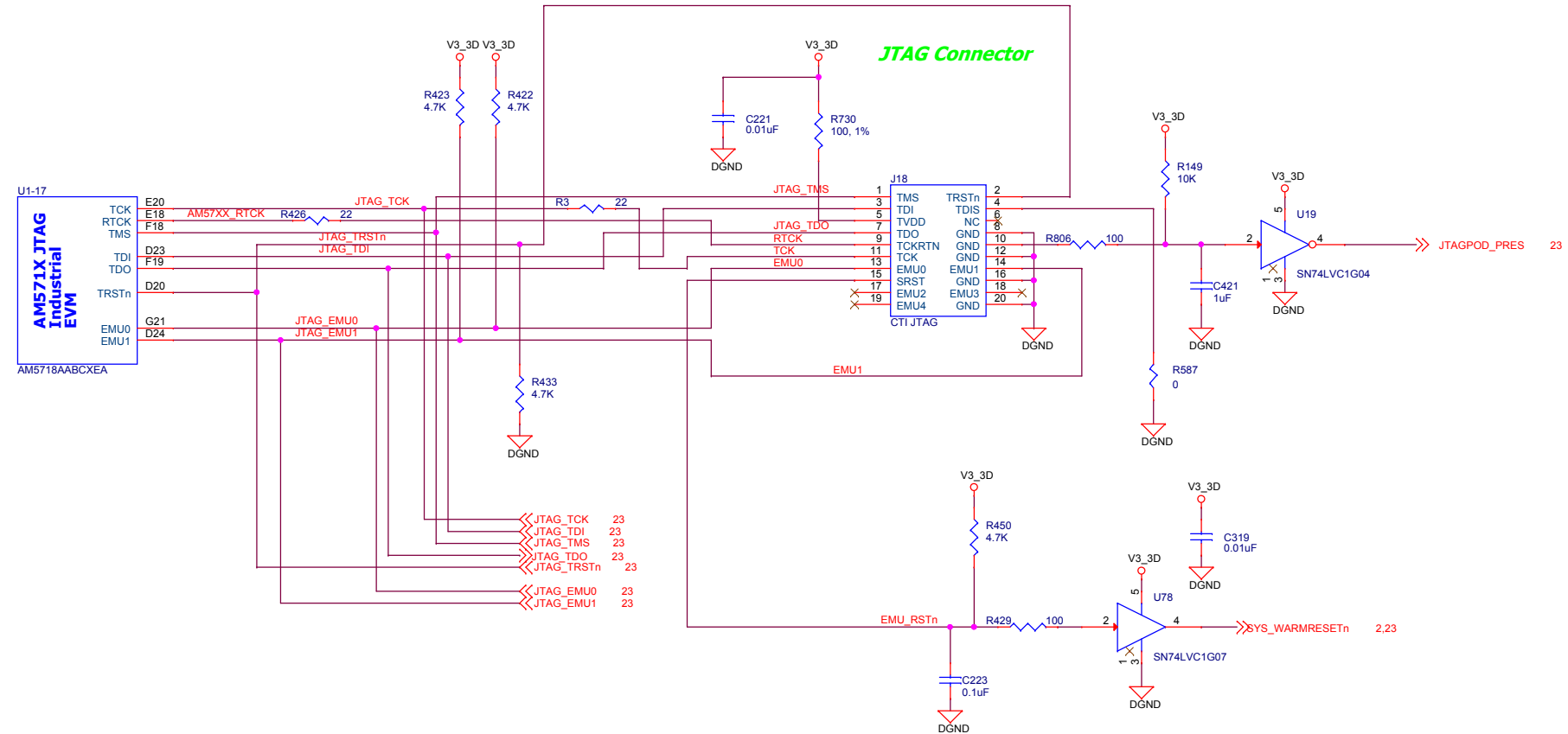
**ID Memory**

9,20,30,32 IND\_I2C\_SCL  
20,30,32 IND\_I2C\_SDA

U33  
SCL VCC 8  
SDA 5  
VSS 4  
A0 1  
A1 2  
A2 3  
WP 7  
CAT24C256W

V3\_3D  
C220 0.01uF  
R421 DNI  
V3\_3D

DGND DGND




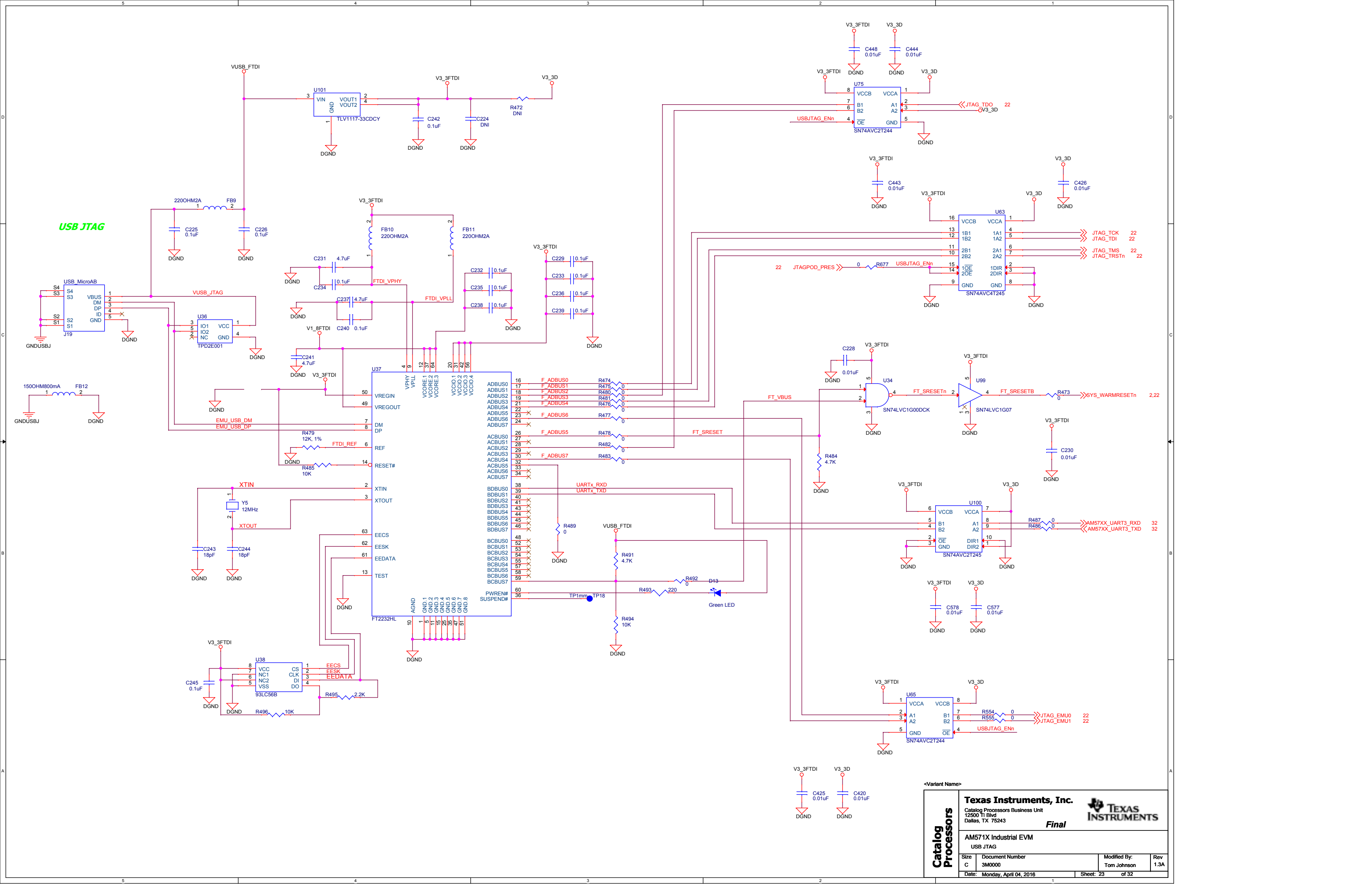
**Boot Configuration**

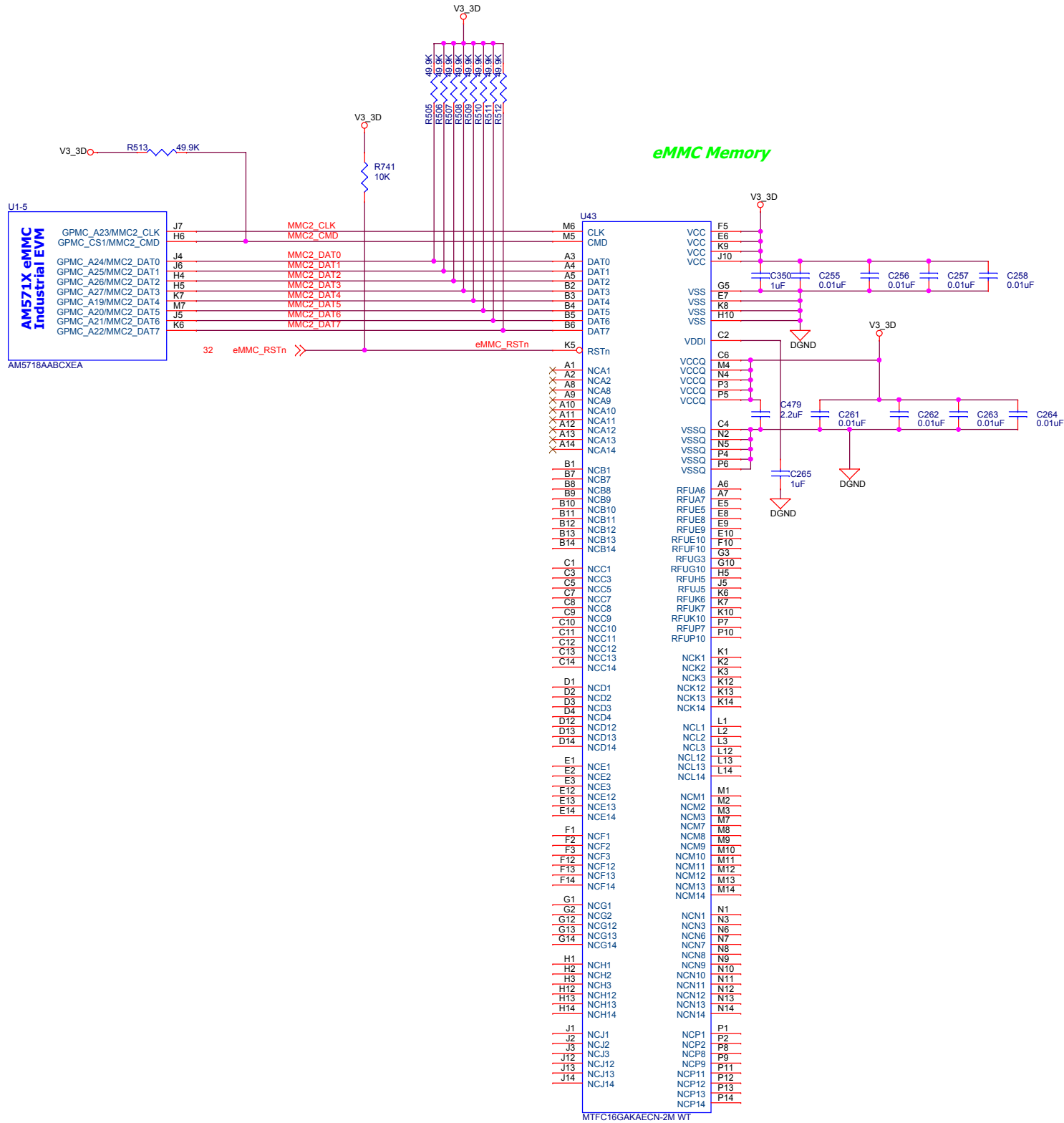
32 AM57XX\_GPMC\_AD[15..0] ↔ AM57XX\_GPMC\_AD[15..0]

Pin	Signal	Pin	Signal
AM57XX_GPMC_AD0	SYSBOOT0	AM57XX_GPMC_AD1	SYSBOOT1
AM57XX_GPMC_AD2	SYSBOOT2	AM57XX_GPMC_AD3	SYSBOOT3
AM57XX_GPMC_AD4	SYSBOOT4	AM57XX_GPMC_AD5	SYSBOOT5
AM57XX_GPMC_AD6	SYSBOOT6	AM57XX_GPMC_AD7	SYSBOOT7
AM57XX_GPMC_AD8	SYSBOOT8	AM57XX_GPMC_AD9	SYSBOOT9
AM57XX_GPMC_AD10	SYSBOOT10	AM57XX_GPMC_AD11	SYSBOOT11
AM57XX_GPMC_AD12	SYSBOOT12	AM57XX_GPMC_AD13	SYSBOOT13
AM57XX_GPMC_AD14	SYSBOOT14	AM57XX_GPMC_AD15	SYSBOOT15

Figure 10 illustrates the boot configuration for the AM57XX GPMC. The left diagram shows a single boot configuration where the 16-bit address bus AM57XX\_GPMC\_AD[15..0] is connected to a list of 16 SYSBOOT pins (SYSBOOT0 to SYSBOOT15). The middle and right diagrams show dual boot configurations. The middle diagram shows a dual boot configuration with V3\_3D and DGND connections, mapping 16 pins to 16 SYSBOOT pins. The right diagram shows a similar dual boot configuration with V3\_3D and DGND connections, mapping 16 pins to 16 SYSBOOT pins.

<Variant Name>					
<b>Catalog Processors</b>	<b>Texas Instruments, Inc.</b> Catalyst Processors Business Unit 12500 TI Blvd Dallas, TX 75243				
				<b>Final</b>	
	AM571X Industrial EVM				
	Debug/Configuration				
	Size C	Document Number 3M0000		Modified By: Tom Johnson	Rev 1.3A
Date:	Monday, April 04, 2016		Sheet: 22	of 32	





<Variant Name>

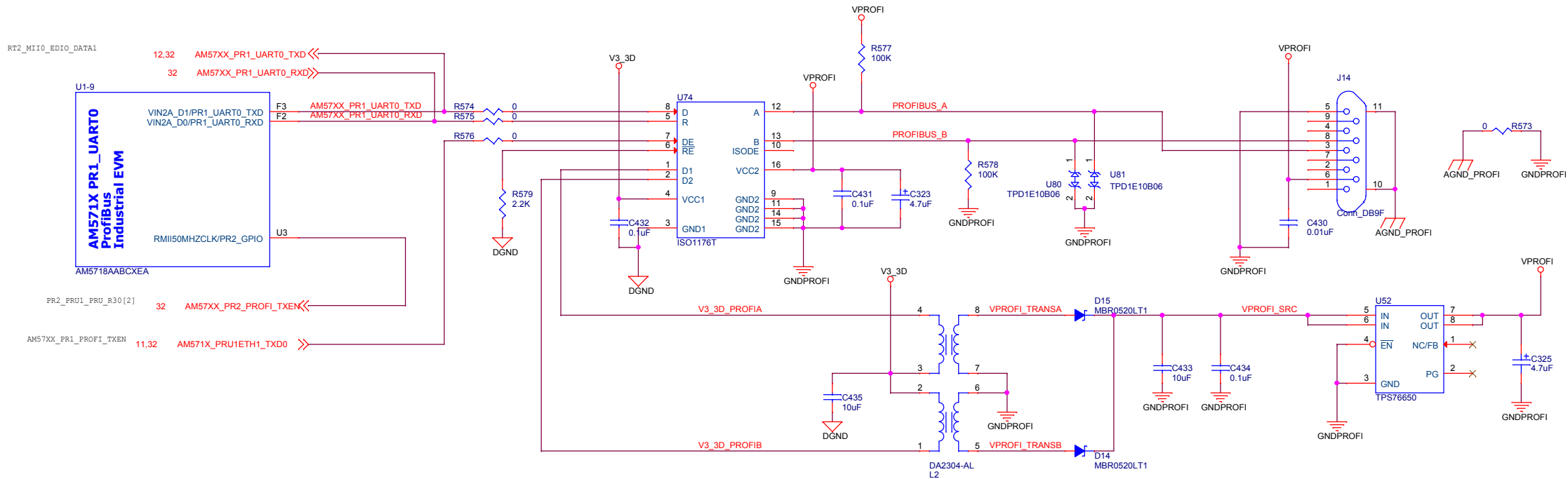
Catalog Processors	<b>Texas Instruments, Inc.</b> Catalog Processors Business Unit 12500 TI Blvd Dallas, TX 75243 <b>Final</b>		
	AM571X Industrial EVM eMMC Memory		
	Size	Document Number	Modified By:
	C	3M0000	Tom Johnson
	Date:	Monday, April 04, 2016	Sheet: 24 of 32

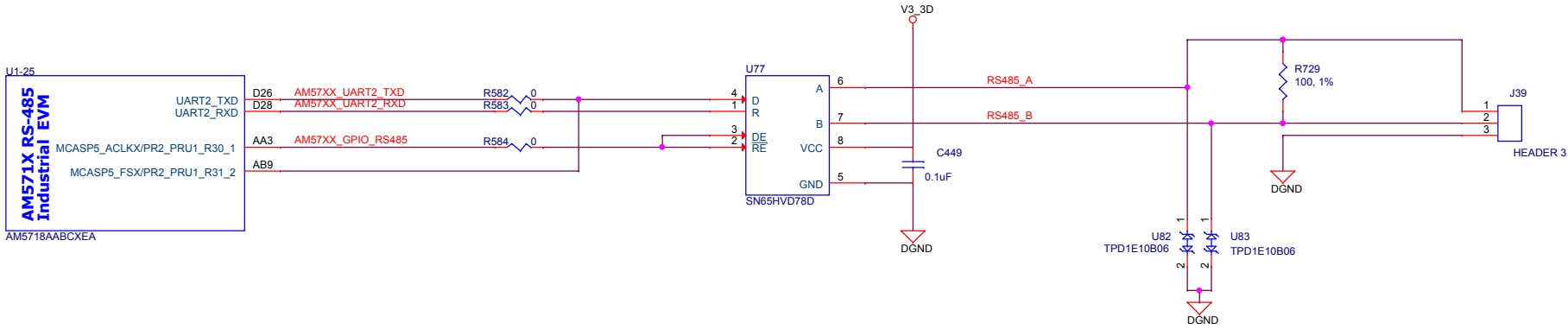




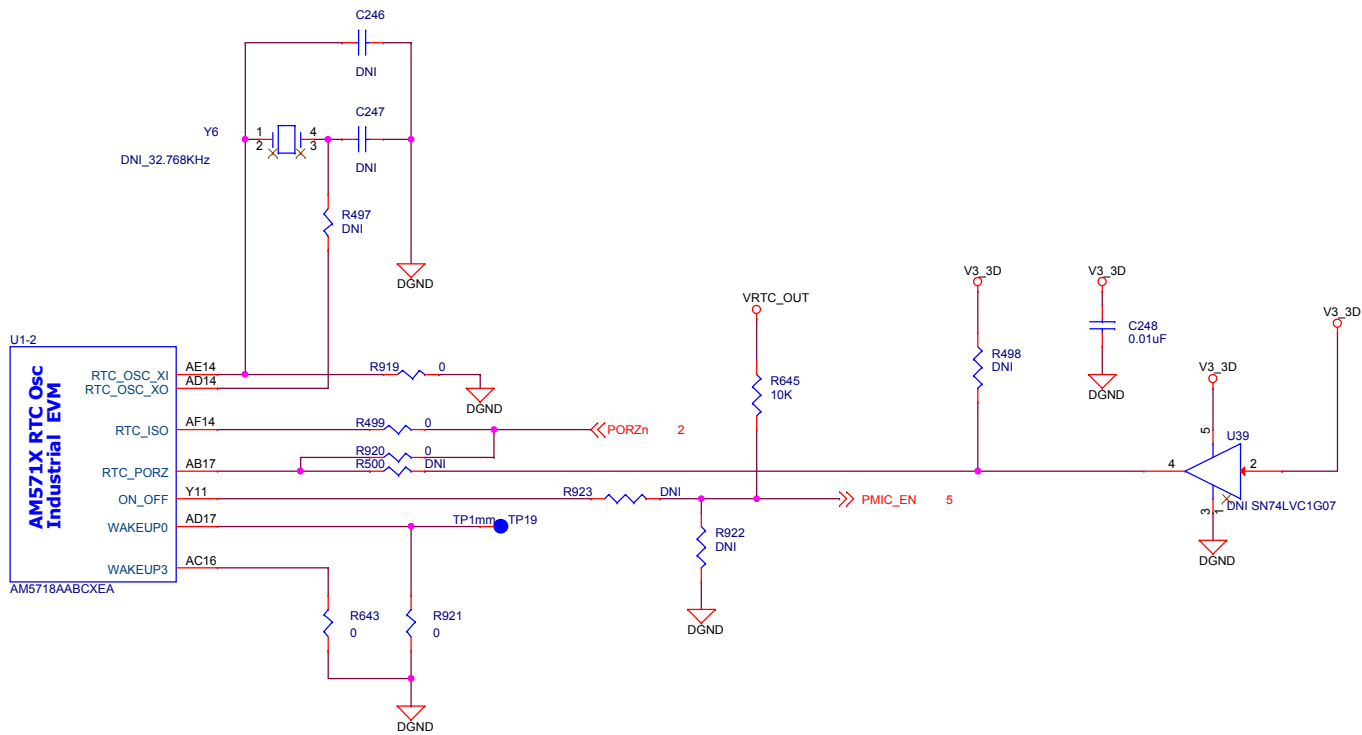












<Variant Name>

Catalog Processors	<b>Texas Instruments, Inc.</b>			
	Catalog Processors Business Unit 12500 TI Blvd Dallas, TX 75243			
	<b>Final</b>			
	AM571X Industrial EVM RTC			
	Size C	Document Number 3M0000	Modified By: Tom Johnson	Rev 1.3A
Date: Monday, April 04, 2016		Sheet: 31	of 32	

