

## AWR1642BOOST

PROC011

## REVISIONS

SEE SHEET 2

# TABLE OF CONTENTS

[illegible]

ASSEMBLY NOTES:

ASSEMBLIES MUST BE CLEAN AND FREE FROM FLUX AND ALL CONTAMINANTS. USE OF NO CLEAN FLUX IS NOT ACCEPTABLE

ASSEMBLIES MUST COMPLY WITH WORKMANSHIP STANDARDS IPC-A-610 CLASS 2, UNLESS OTHERWISE SPECIFIED

COMPONENTS MARKED "DNI = TRUE" WILL NOT BE ASSEMBLED



**TEXAS INSTRUMENTS**

SEMICONDUCTOR OPERATIONS  
10/08/2016

CODE IDENTITY  
NUMBER

01295

SIZE

B

DRAWING NO.
-------------

AWR1642BOOST

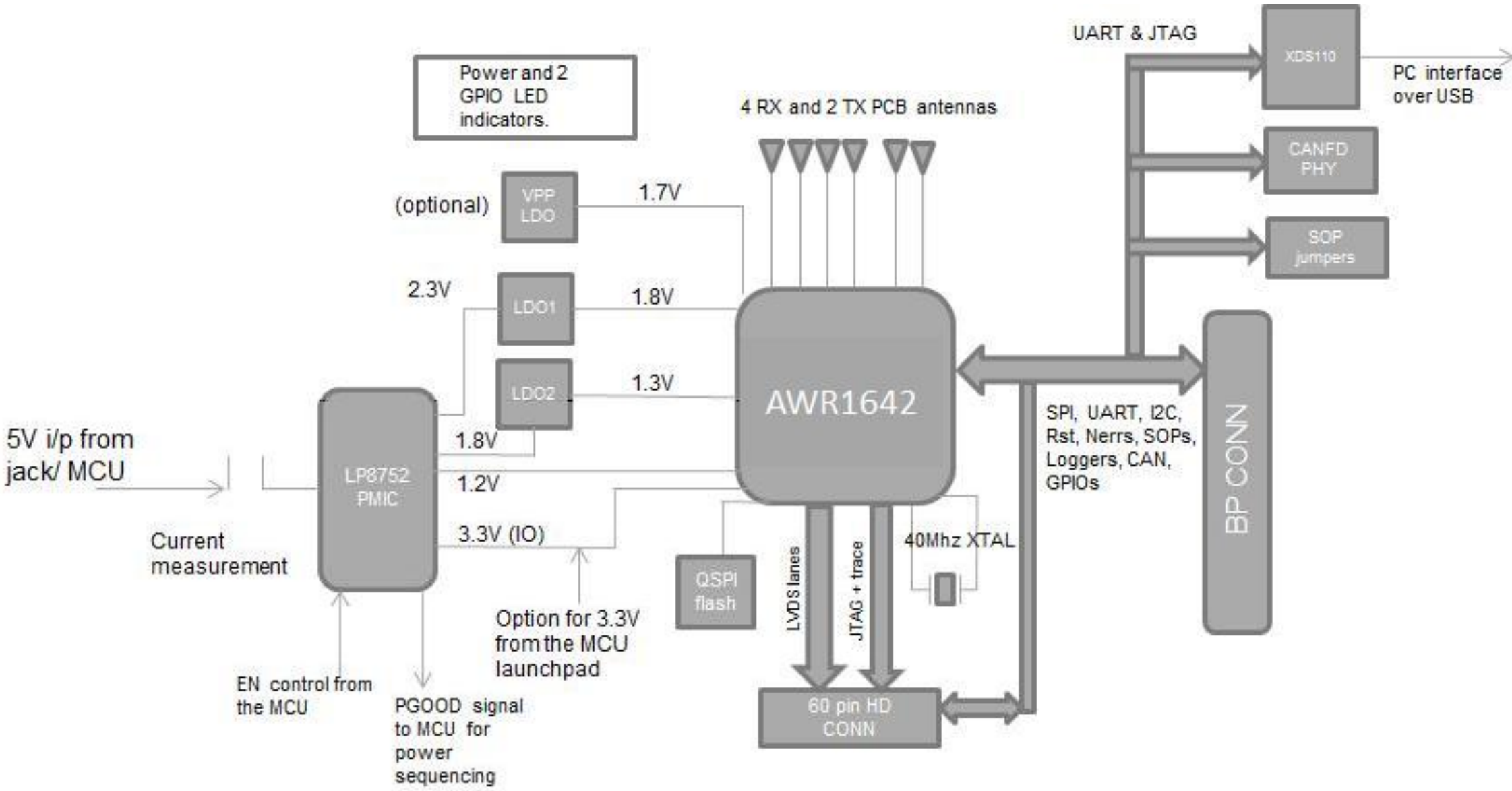
REV


A

## Contents

SHEET 1 OF 19

BLOCK DIAGRAM

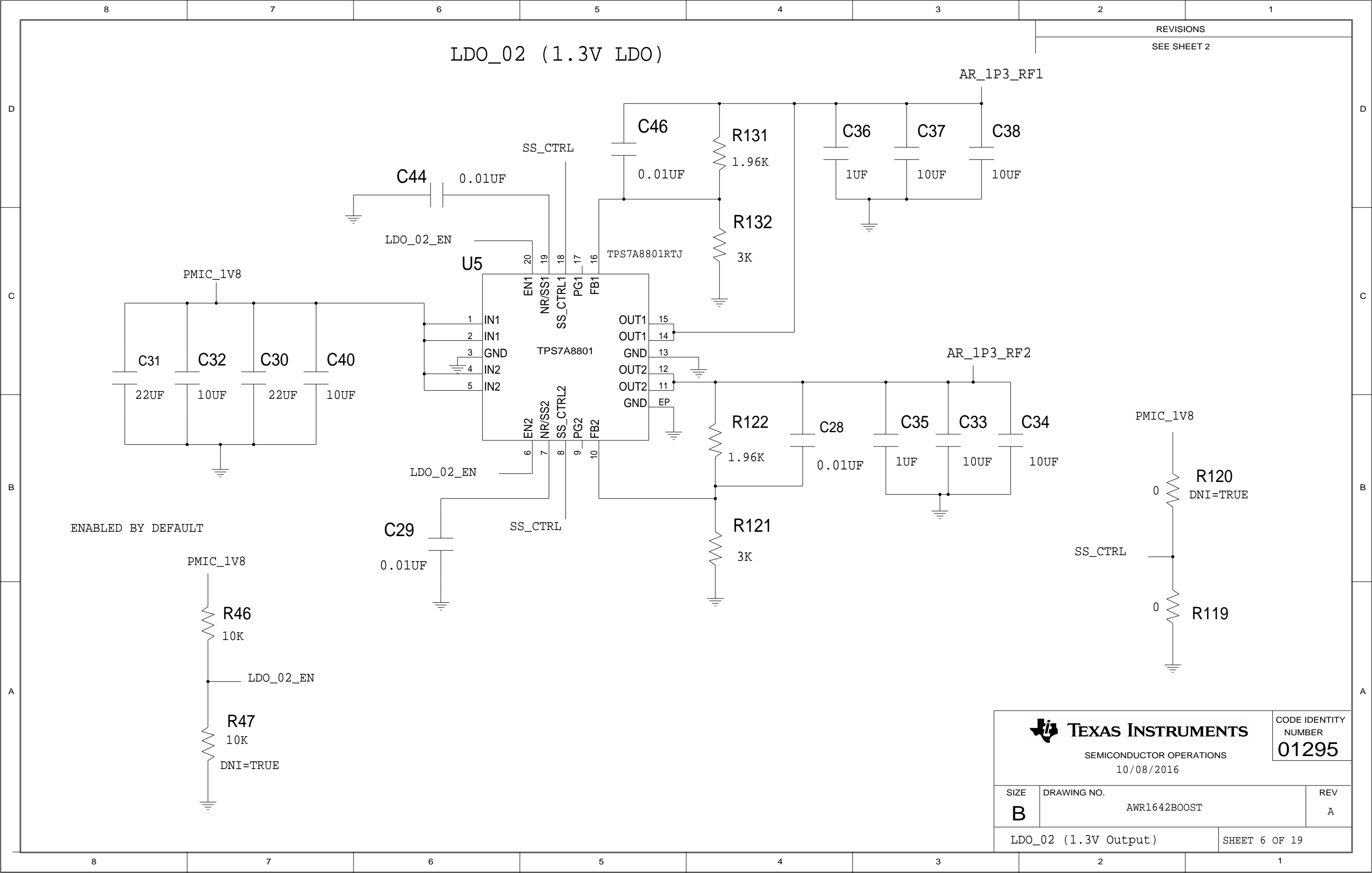


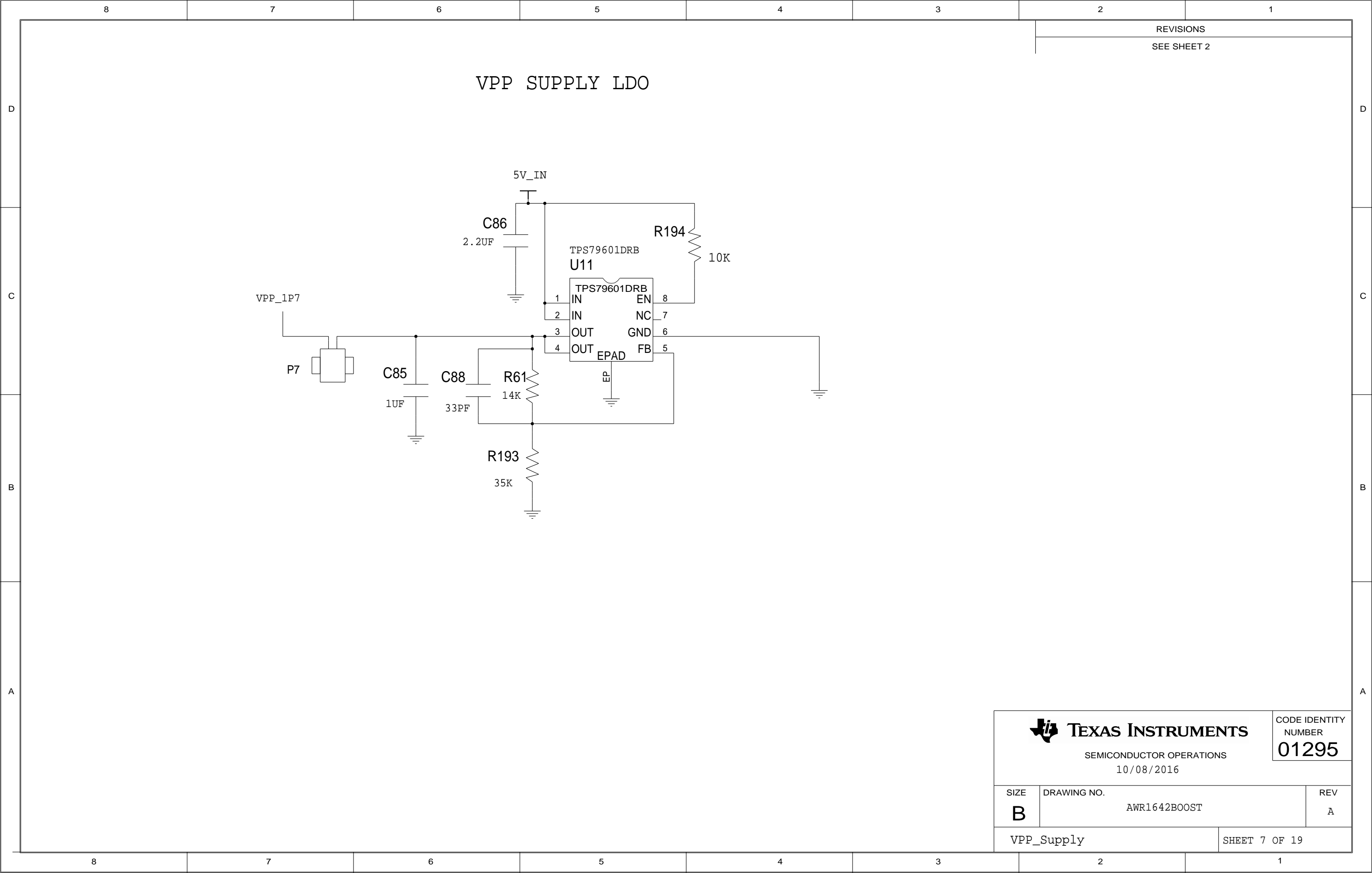
 <b>TEXAS INSTRUMENTS</b> SEMICONDUCTOR OPERATIONS 10/08/2016	CODE IDENTITY NUMBER <b>01295</b>
SIZE <b>B</b>	DRAWING NO. AWR1642BOOST
REV A	
Block diagram	
SHEET 2 OF 19	












 **TEXAS INSTRUMENTS**

SEMICONDUCTOR OPERATIONS  
10/08/2016

CODE IDENTITY  
NUMBER  
**01295**

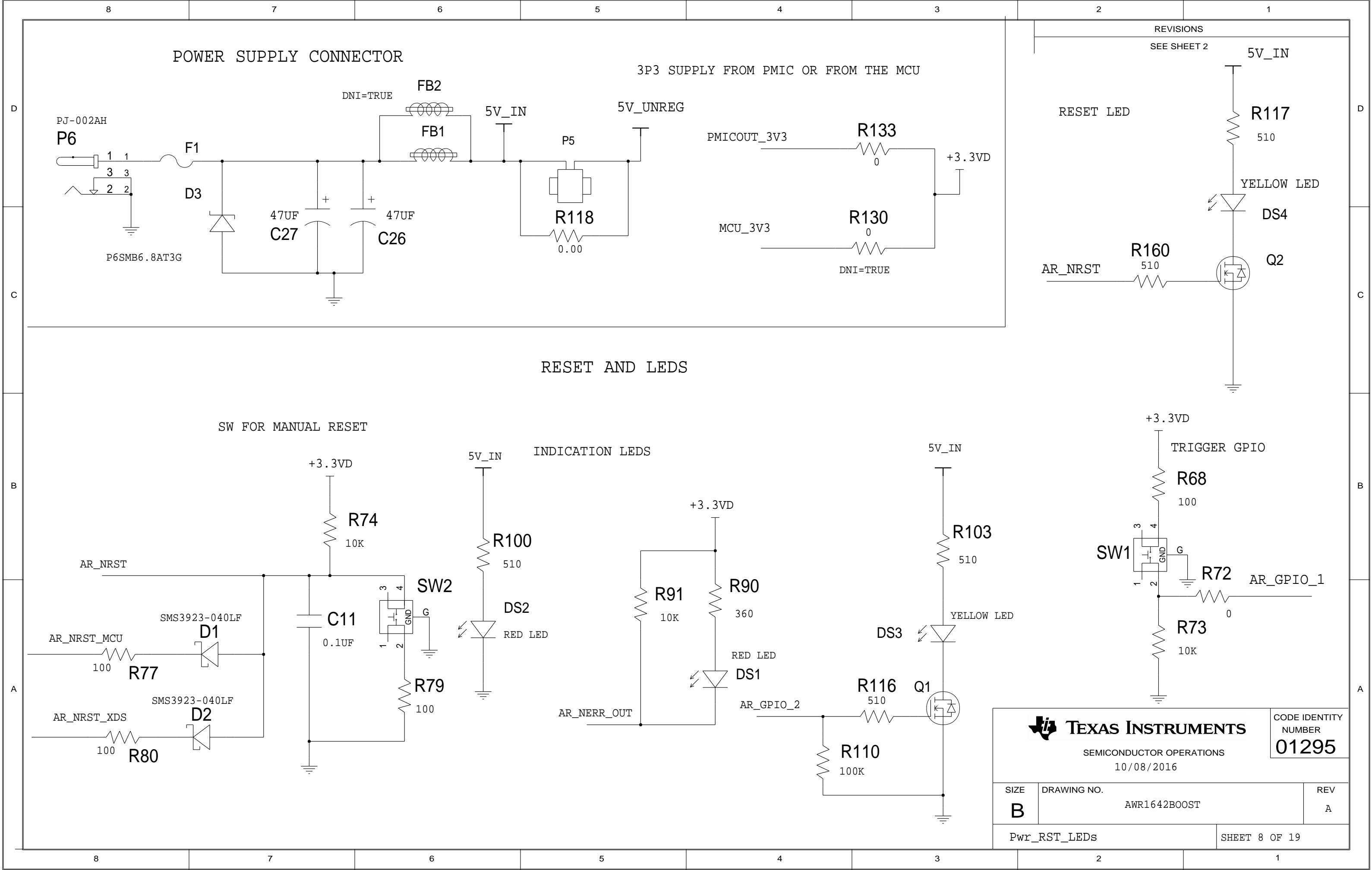
SIZE  
**B**

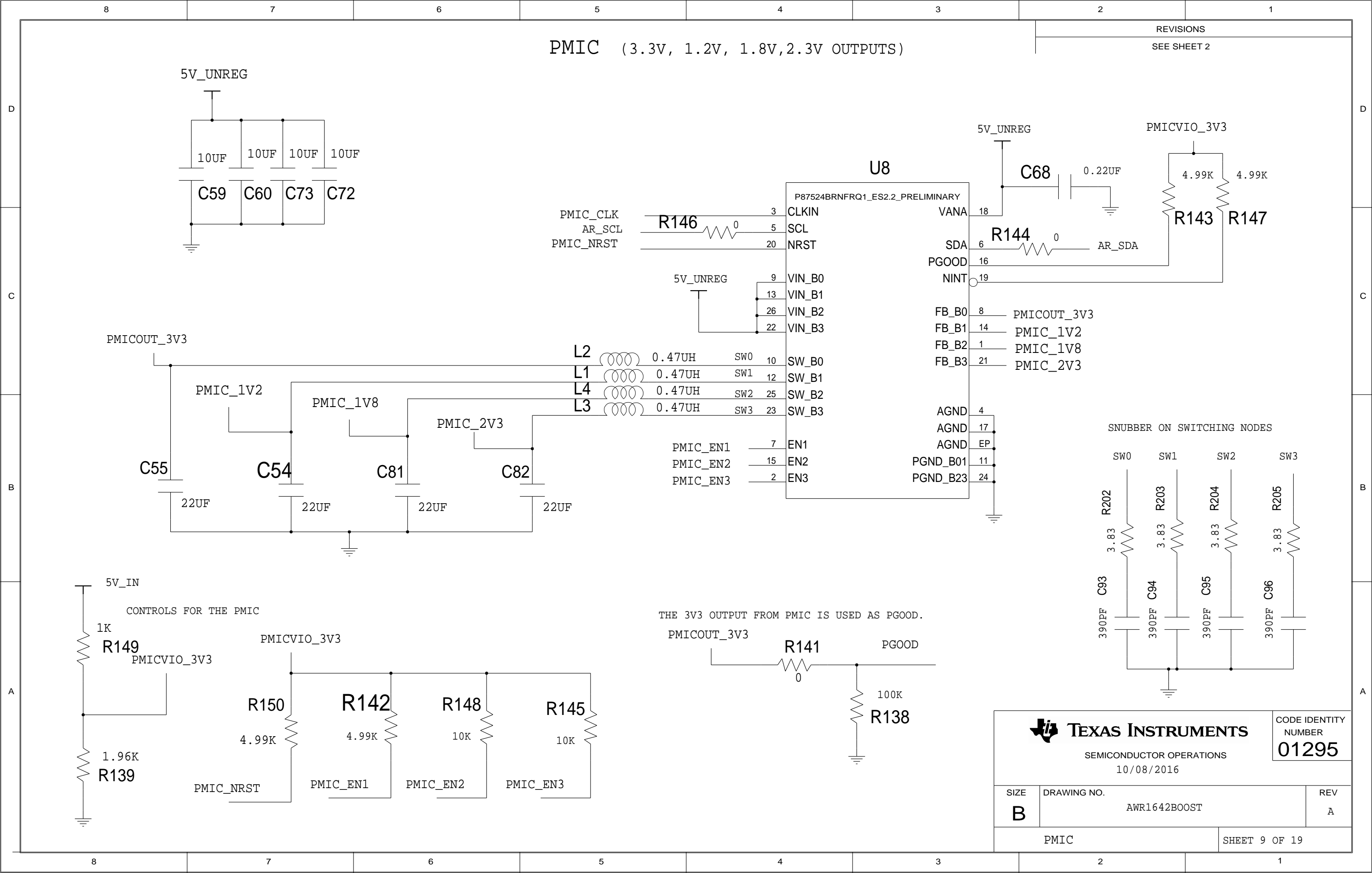
DRAWING NO.  
AWR1642BOOST

REV  
A

VPP\_Supply

SHEET 7 OF 19

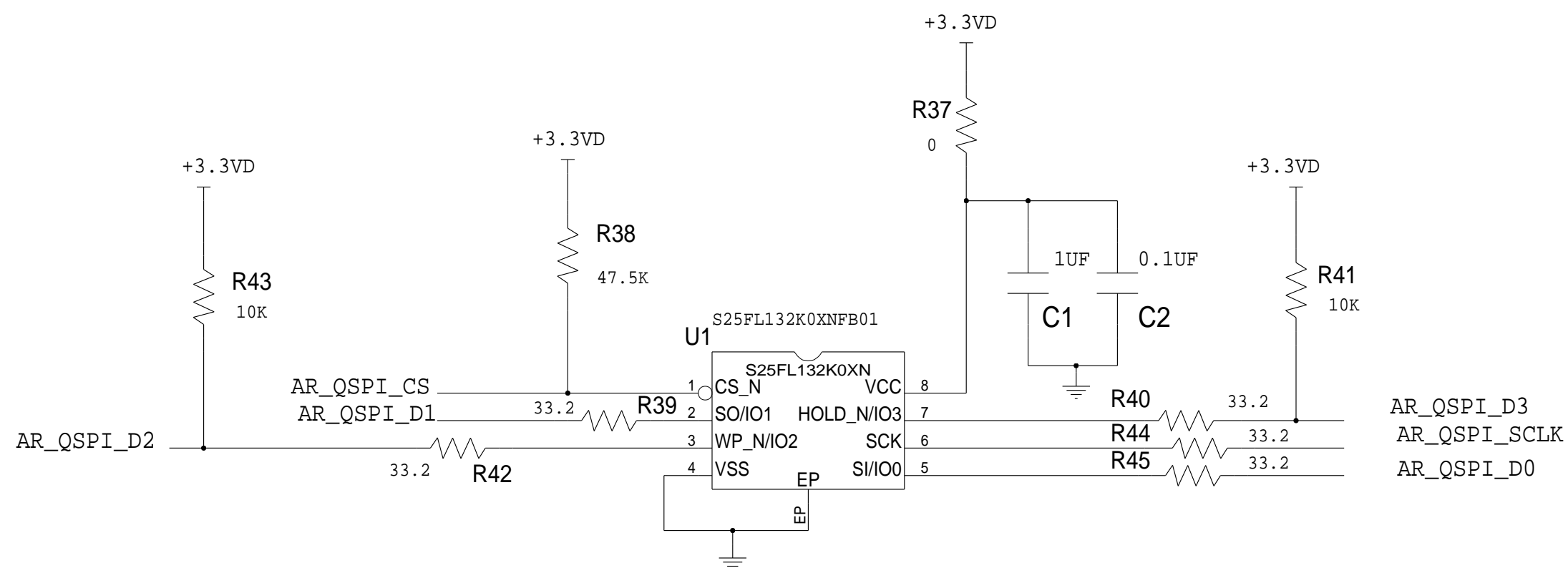




## REVISIONS

SEE SHEET 2

## QSPI FLASH



**TEXAS INSTRUMENTS**

SEMICONDUCTOR OPERATIONS  
10/08/2016

CODE IDENTITY NUMBER	
-------------------------	--

01295

SIZE

**B**

DRAWING NO.
-------------

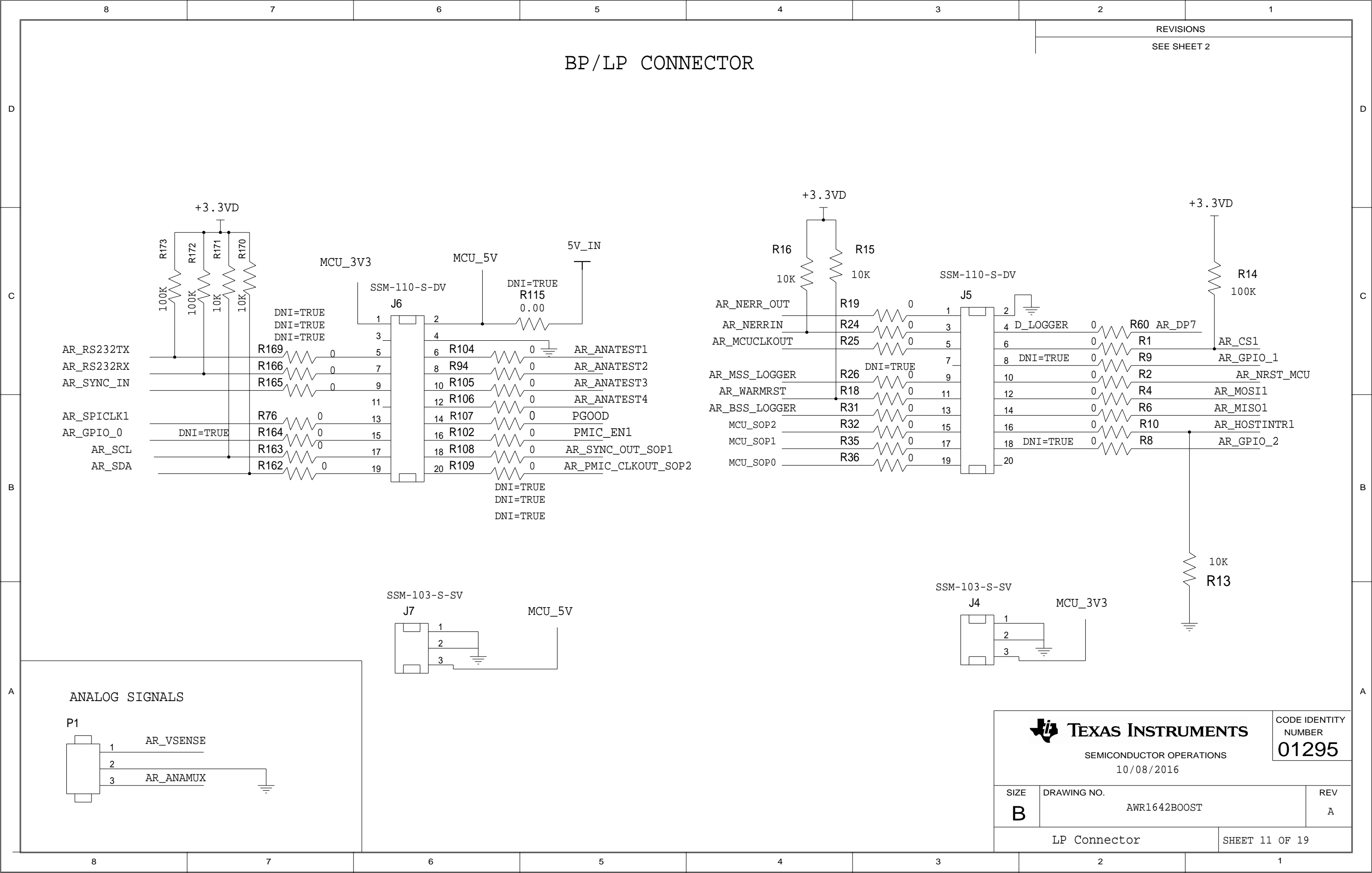
AWR1642BOOST

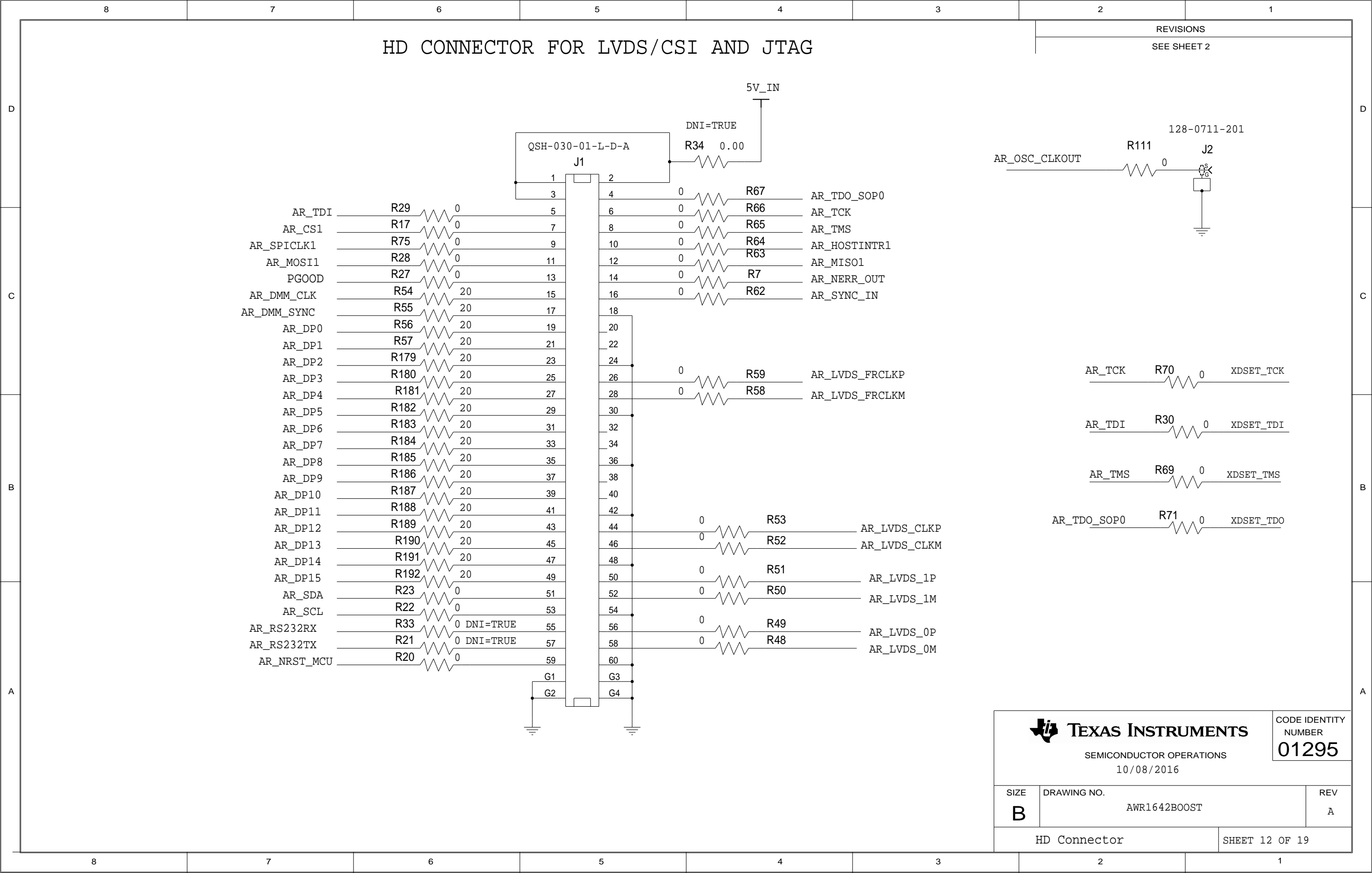
REV

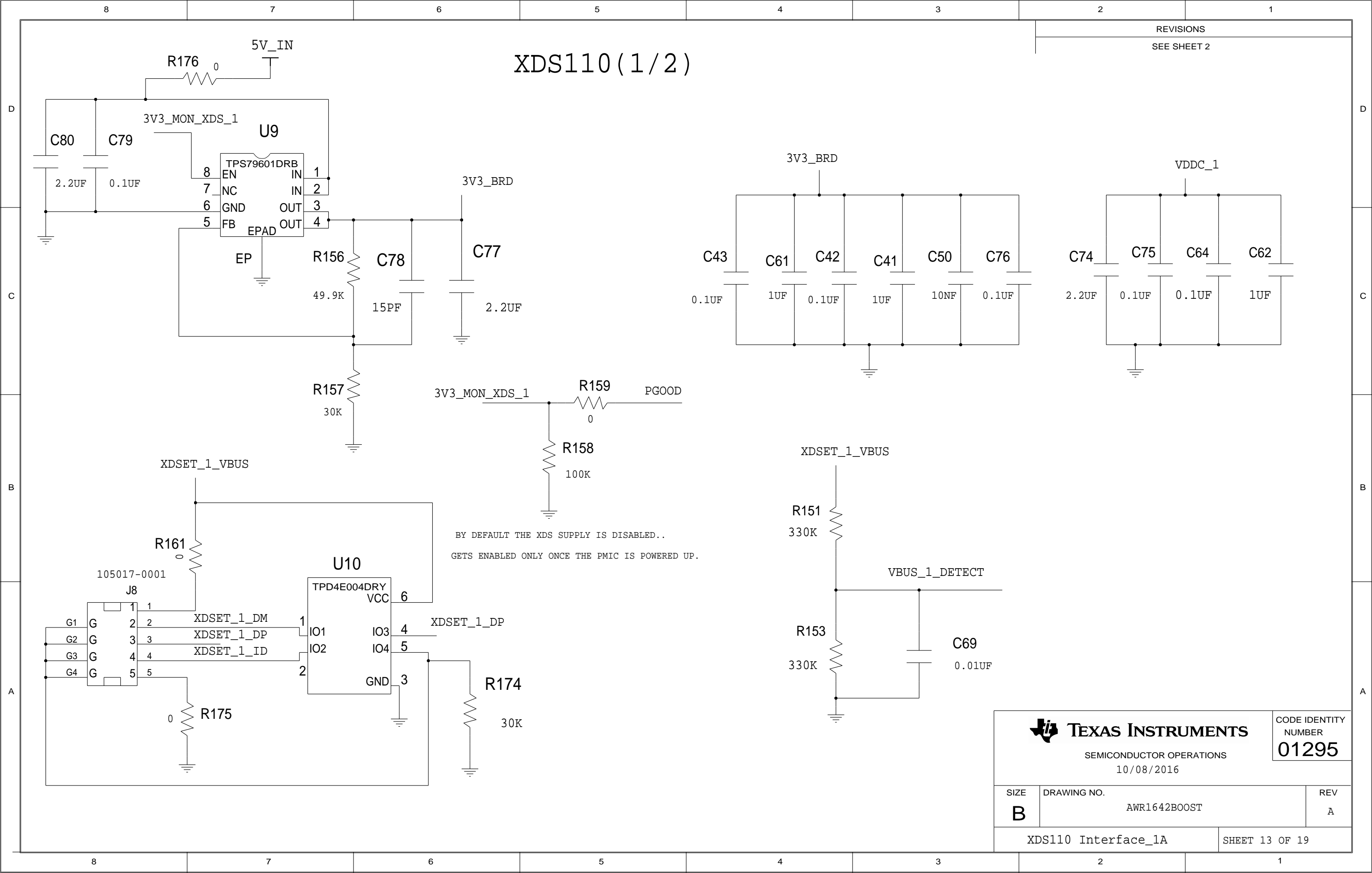
A

QSPI flash section

SHEET 10 OF 19



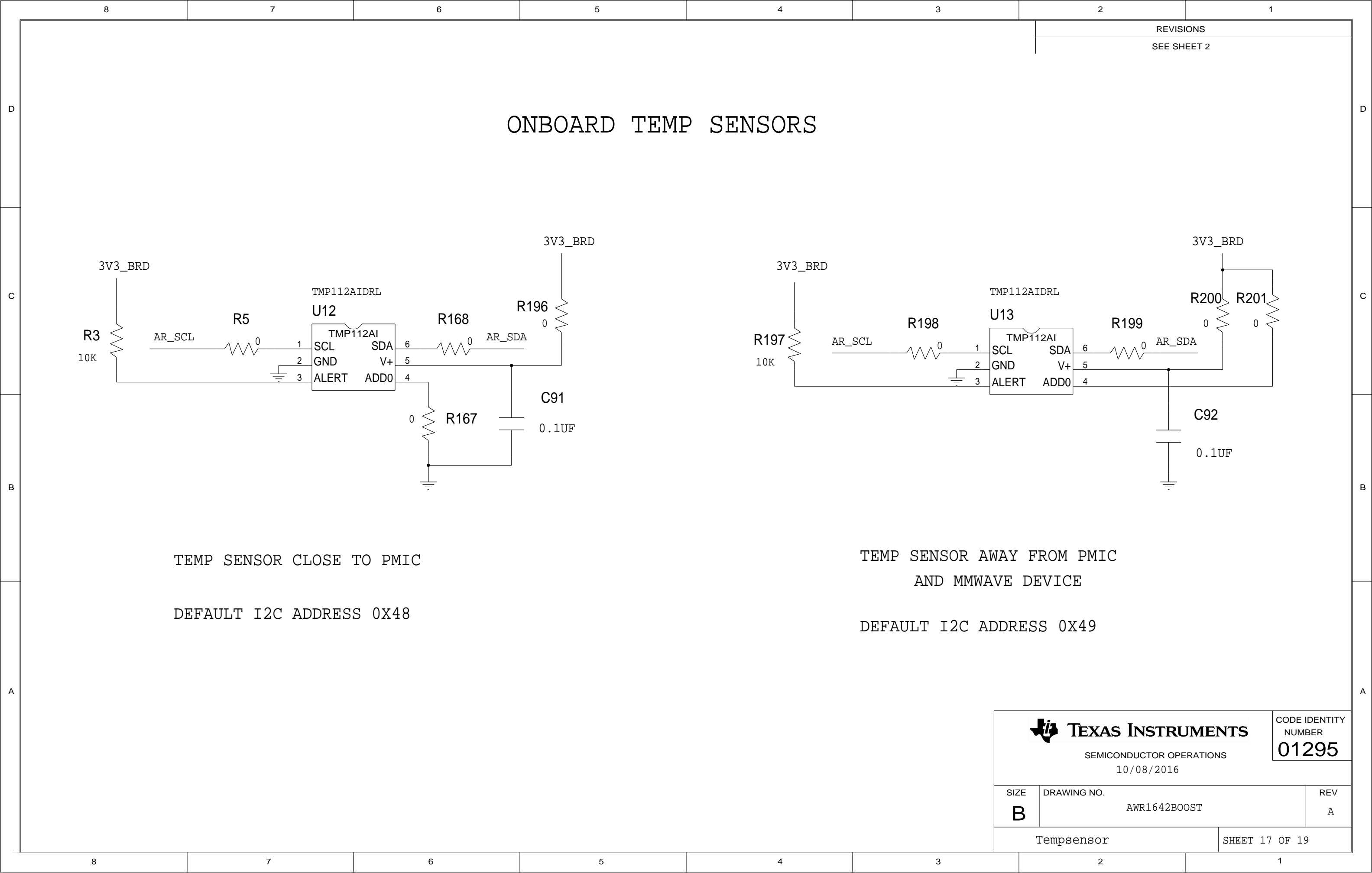












8		7		6		5		4		3		2		1	
												REVISIONS			
												SEE SHEET 2			
REVISION HISTORY															
CHANGES IN REV A															
1) ADDED ZENER DIODE ON 5V INPUT TO PROTECT FROM HIGH VOLTAGES.															
2) ONBOARD TEMPERATURE SENSORS.															
3) FERRITE BEAD ON 5V SUPPLY.															

8	7	6	5	4	3	2	1
						REVISIONS	
						SEE SHEET 2	
<div><div></div>FD1</div>		<div><div></div>FD4</div>					
<div><div></div>FD2</div>		<div><div></div>FD5</div>					
<div><div></div>FD3</div>		<div><div></div>FD6</div>					
PCB LOGO		PCB LOGO		PCB LOGO		PCB LOGO	
TEXAS INSTRUMENTS		ESD SENSITIVE		FCC DISCLAIMER		LAUNCHPAD COMPATIBLE	
PCB LOGO		PCB LOGO		PCB LOGO		PCB LOGO	
TEXAS INSTRUMENTS		ESD SENSITIVE		FCC DISCLAIMER		LAUNCHPAD COMPATIBLE	
PCB LABELS : THESE LABELS NEED TO BE PUT ON THE ASSEMBLED PCB							
1) TOP SIDE OF THE PCB ->		AWR1642BOOST REV A					
2) BOTTOM SIDE OF THE PCB ->		AWR1642BOOST REV A					
ASSEMBLY NOTES: ASSEMBLIES MUST BE CLEAN AND FREE FROM FLUX AND ALL CONTAMINANTS. USE OF NO CLEAN FLUX IS NOT ACCEPTABLE ASSEMBLIES MUST COMPLY WITH WORKMANSHIP STANDARDS IPC-A-610 CLASS 2, UNLESS OTHERWISE SPECIFIED COMPONENTS MARKED "DNI = TRUE" WILL NOT BE ASSEMBLED							
<div><div><div><div><div></div><div>TEXAS INSTRUMENTS</div><div>SEMICONDUCTOR OPERATIONS</div><div>10/08/2016</div></div><div><div>CODE IDENTITY NUMBER</div><div>01295</div></div></div><div><div>SIZE</div><div>B</div></div><div><div>DRAWING NO.</div><div>AWR1642BOOST</div></div><div><div>REV</div><div>A</div></div></div><div><div>Hardware</div><div>SHEET 19 OF 19</div></div></div>							
8	7	6	5	4	3	2	1