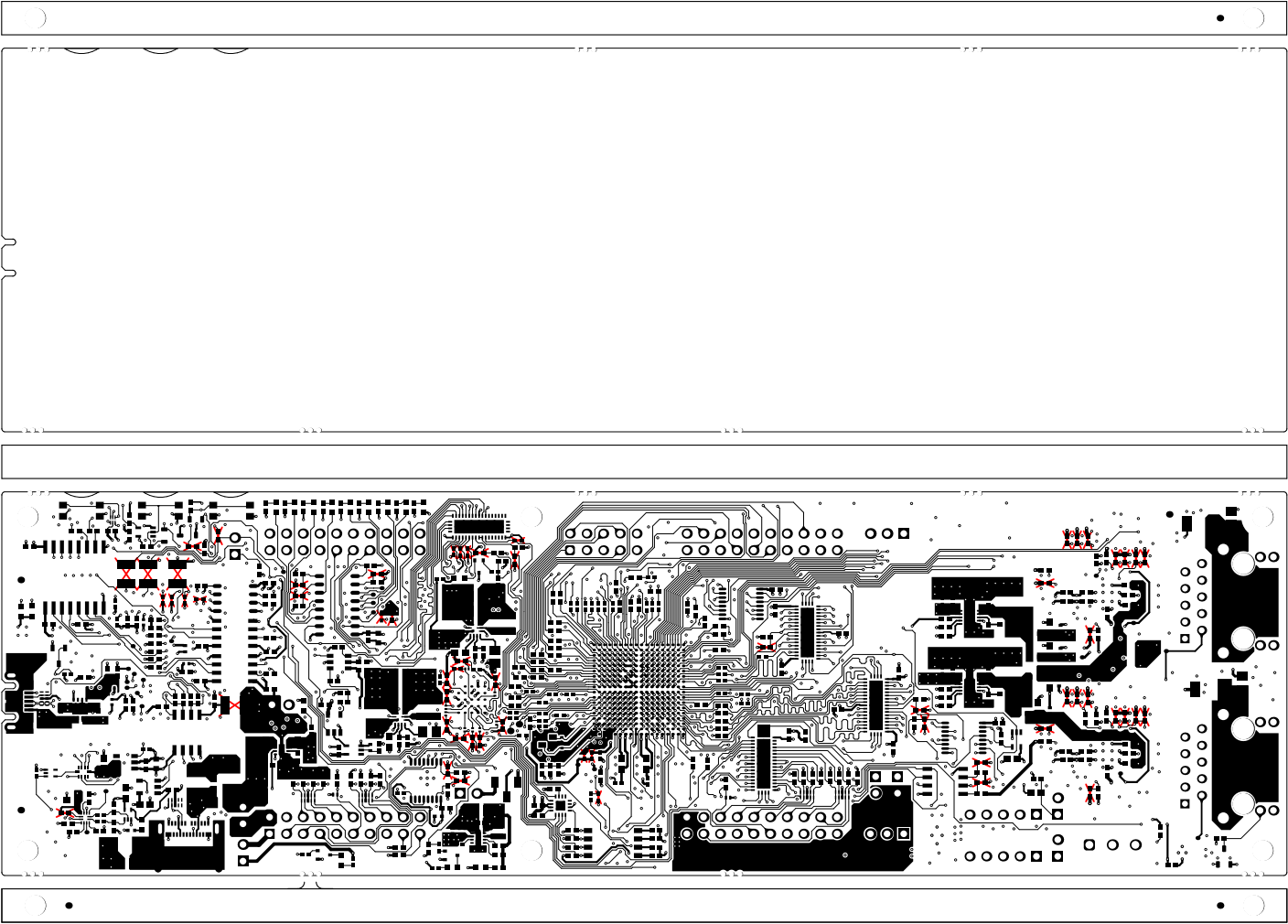
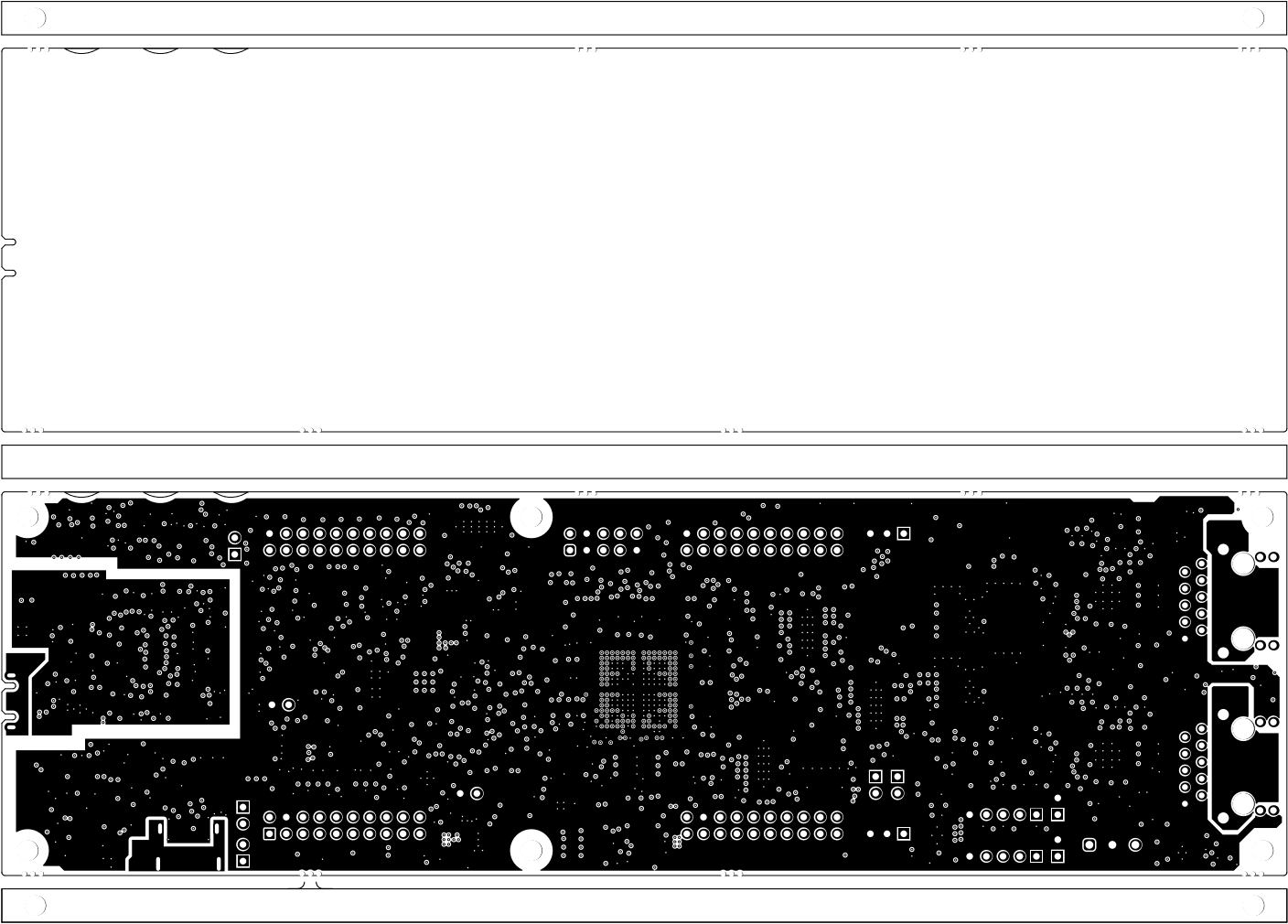


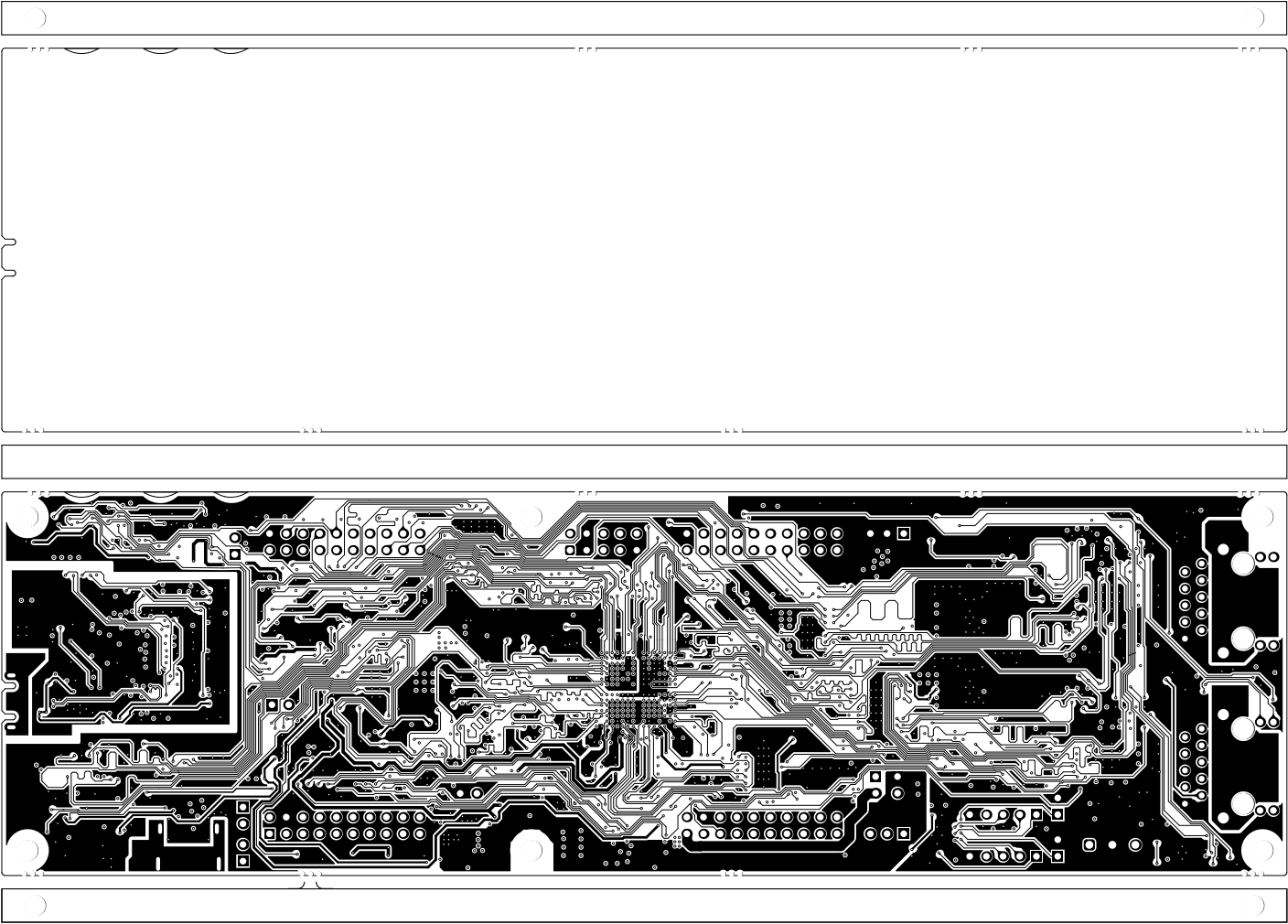
ALL ARTWORK VIEWED FROM TOP SIDE	BOARD #: PROC171	REV: E2	SUN REV: 67 [Locally Modified]
LAYER NAME = Top Solder	TID #: N/A		
PLOT NAME = Top Solder Mask	GENERATED : 12/27/2023 12:42:51 PM		TEXAS INSTRUMENTS



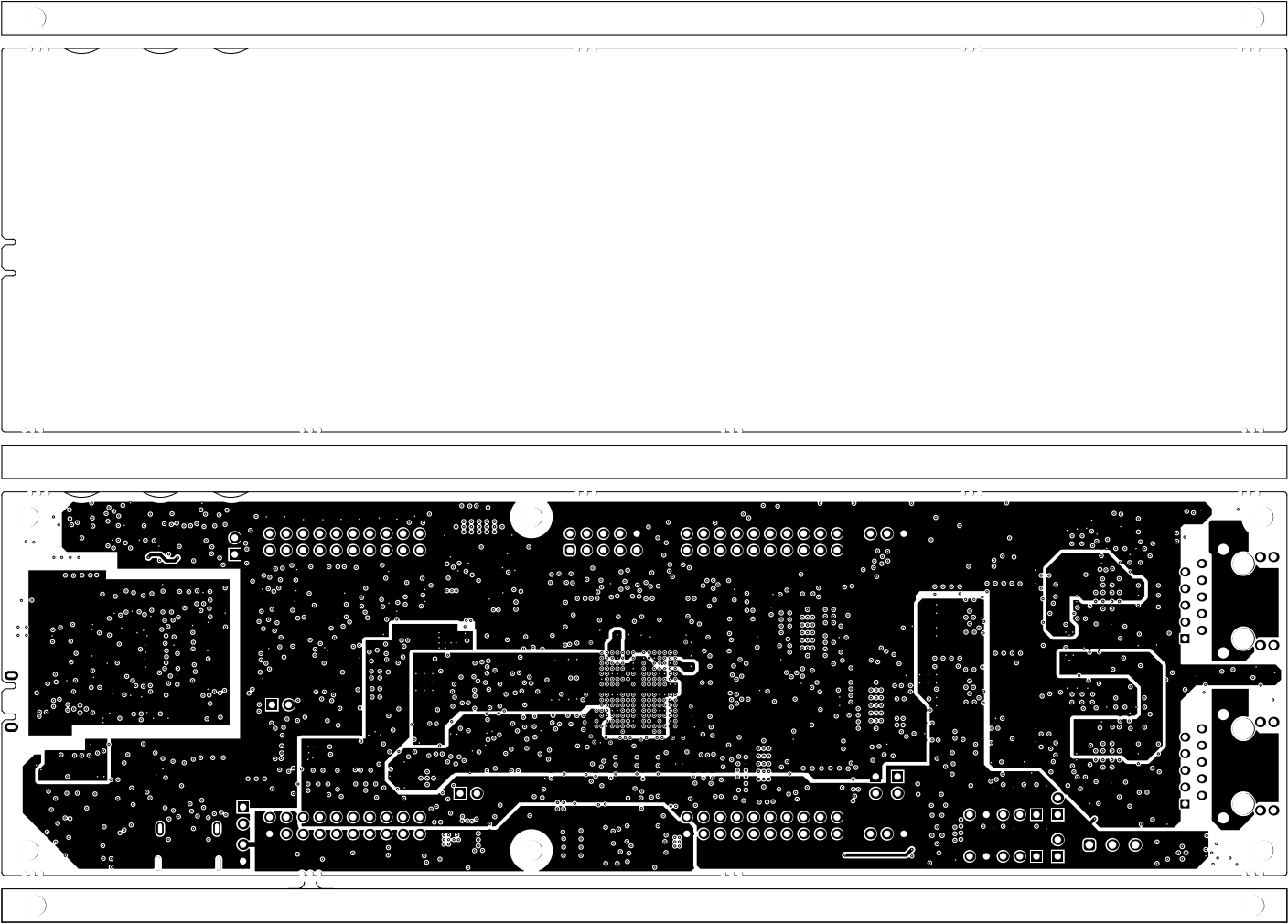
ALL ARTWORK VIEWED FROM TOP SIDE	BOARD #: PROC171	REV: E2	SUN REV: 67 [Locally Modified]
LAYER NAME = Top Layer	TID #: N/A		
PLOT NAME = Top Layer	GENERATED : 12/27/2023 12:42:51 PM		TEXAS INSTRUMENTS



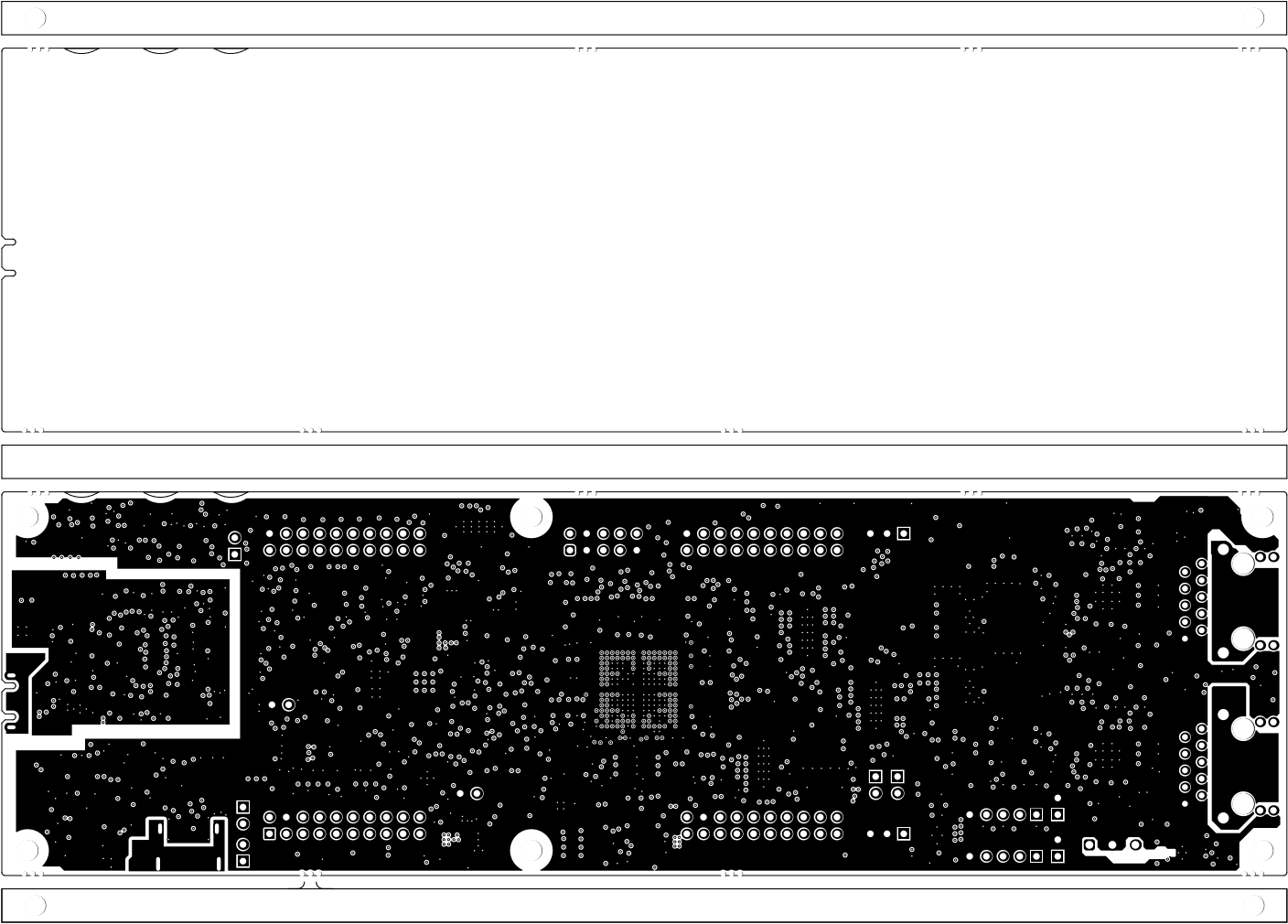
ALL ARTWORK VIEWED FROM TOP SIDE	BOARD #: PROC171	REV: E2	SUN REV: 67 [Locally Modified]
LAYER NAME = GND 1	TID #: N/A		
PLOT NAME = Signal Layer 1	GENERATED : 12/27/2023 12:42:52 PM		TEXAS INSTRUMENTS



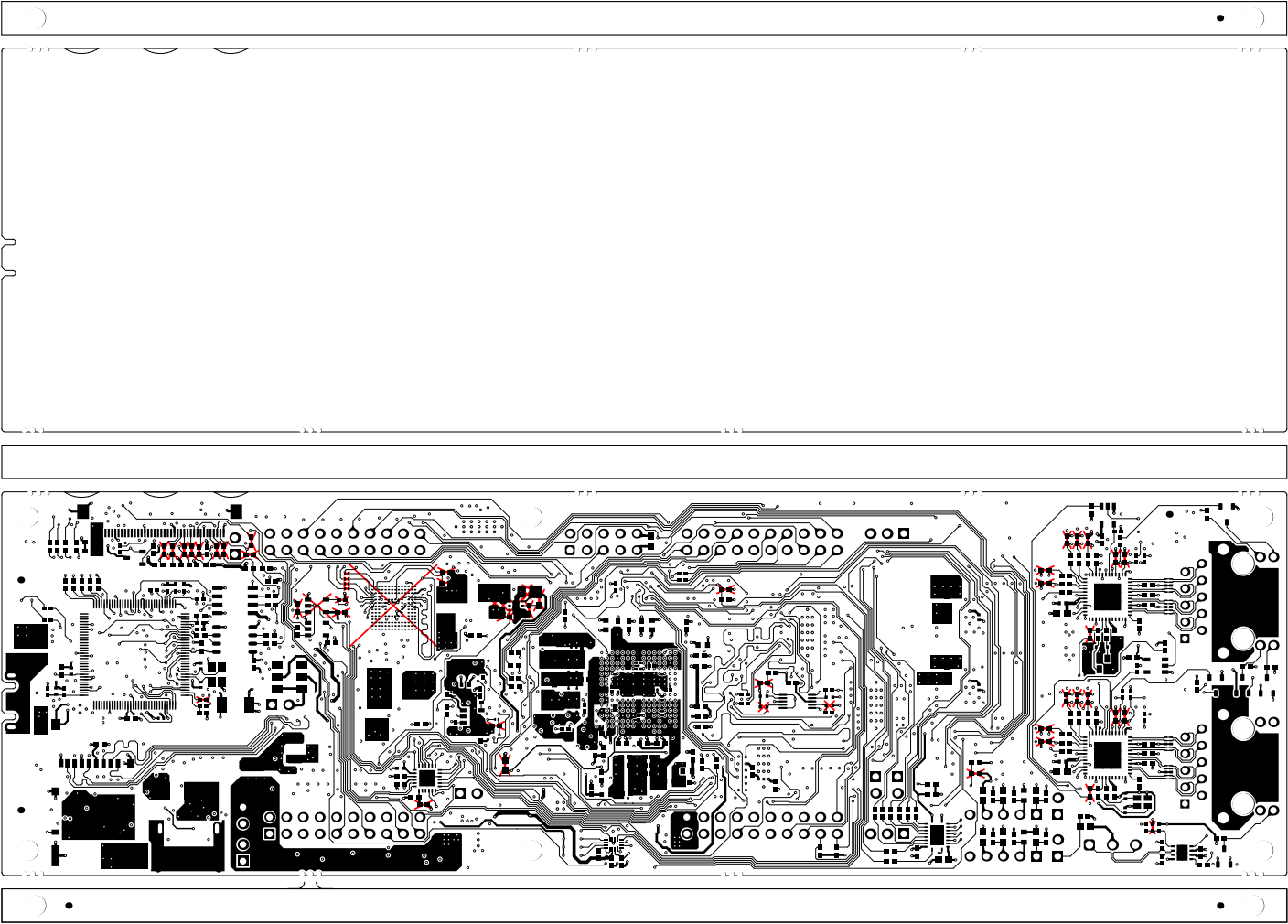
ALL ARTWORK VIEWED FROM TOP SIDE	BOARD #: PROC171	REV: E2	SUN REV: 67 [Locally Modified]
LAYER NAME = SIG 1	TID #: N/A		
PLOT NAME = Signal Layer 2	GENERATED : 12/27/2023 12:42:52 PM	TEXAS INSTRUMENTS	



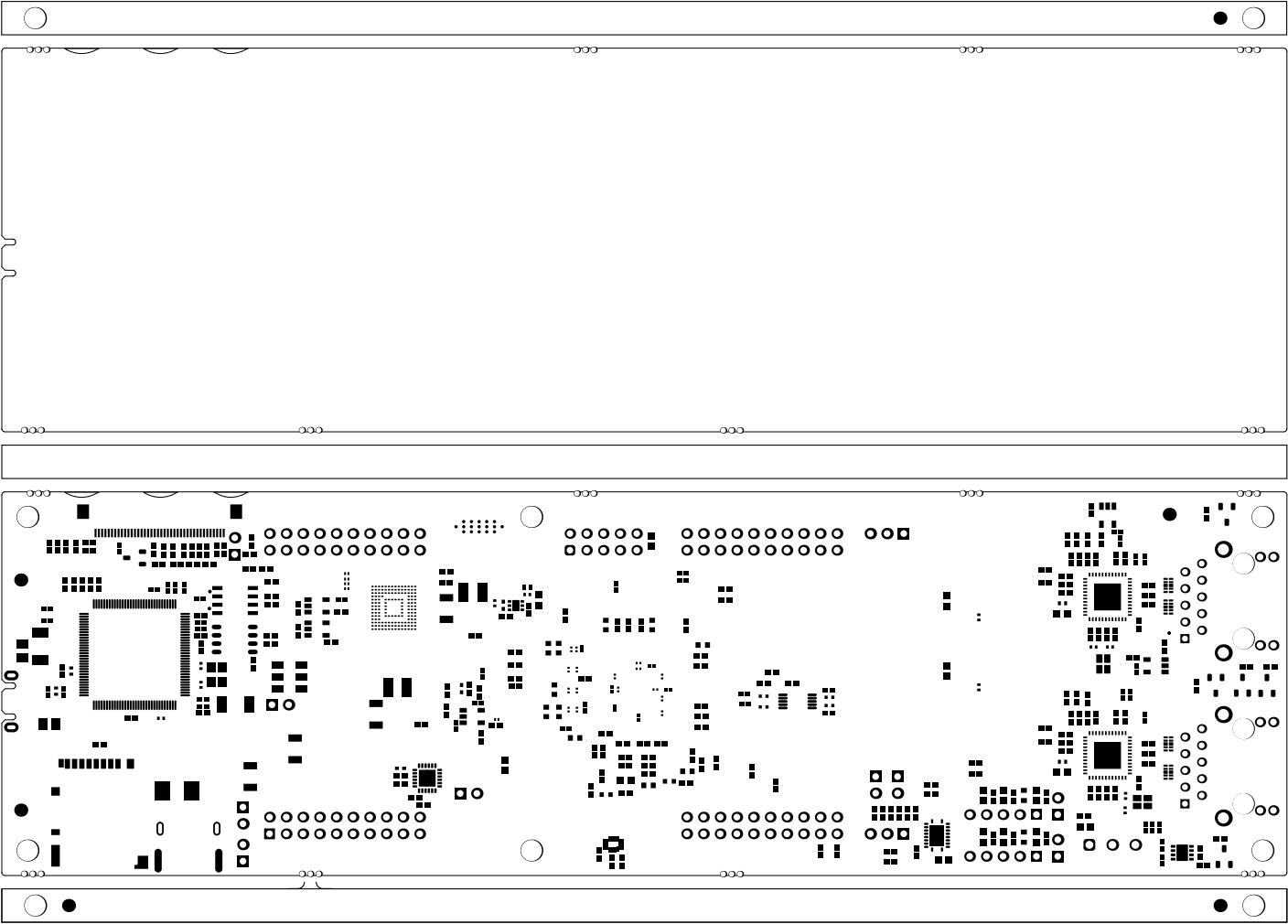
ALL ARTWORK VIEWED FROM TOP SIDE	BOARD #: PROC171	REV: E2	SUN REV: 67 [Locally Modified]
LAYER NAME = SIG 2	TID #: N/A		
PLOT NAME = Signal Layer 3	GENERATED : 12/27/2023 12:42:52 PM	TEXAS INSTRUMENTS	



ALL ARTWORK VIEWED FROM TOP SIDE	BOARD #: PROC171	REV: E2	SUN REV: 67 [Locally Modified]
LAYER NAME = GND 2	TID #: N/A		
PLOT NAME = Signal Layer 4	GENERATED : 12/27/2023 12:42:52 PM		TEXAS INSTRUMENTS

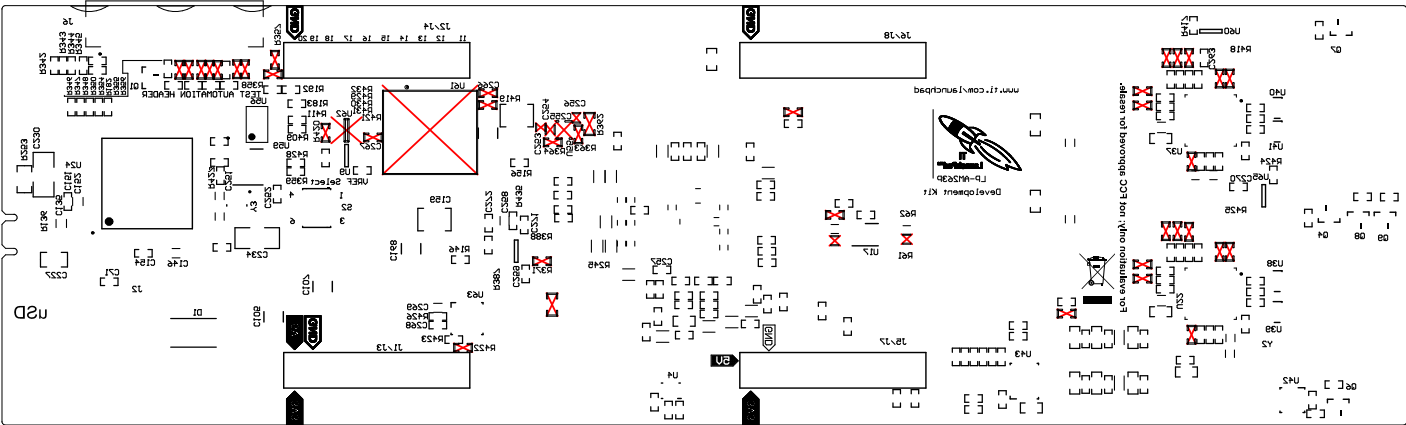


ALL ARTWORK VIEWED FROM TOP SIDE	BOARD #: PROC171	REV: E2	SUN REV: 67 [Locally Modified]
LAYER NAME = Bottom Layer	TID #: N/A		
PLOT NAME = Bottom Layer	GENERATED : 12/27/2023 12:42:52 PM	TEXAS INSTRUMENTS	



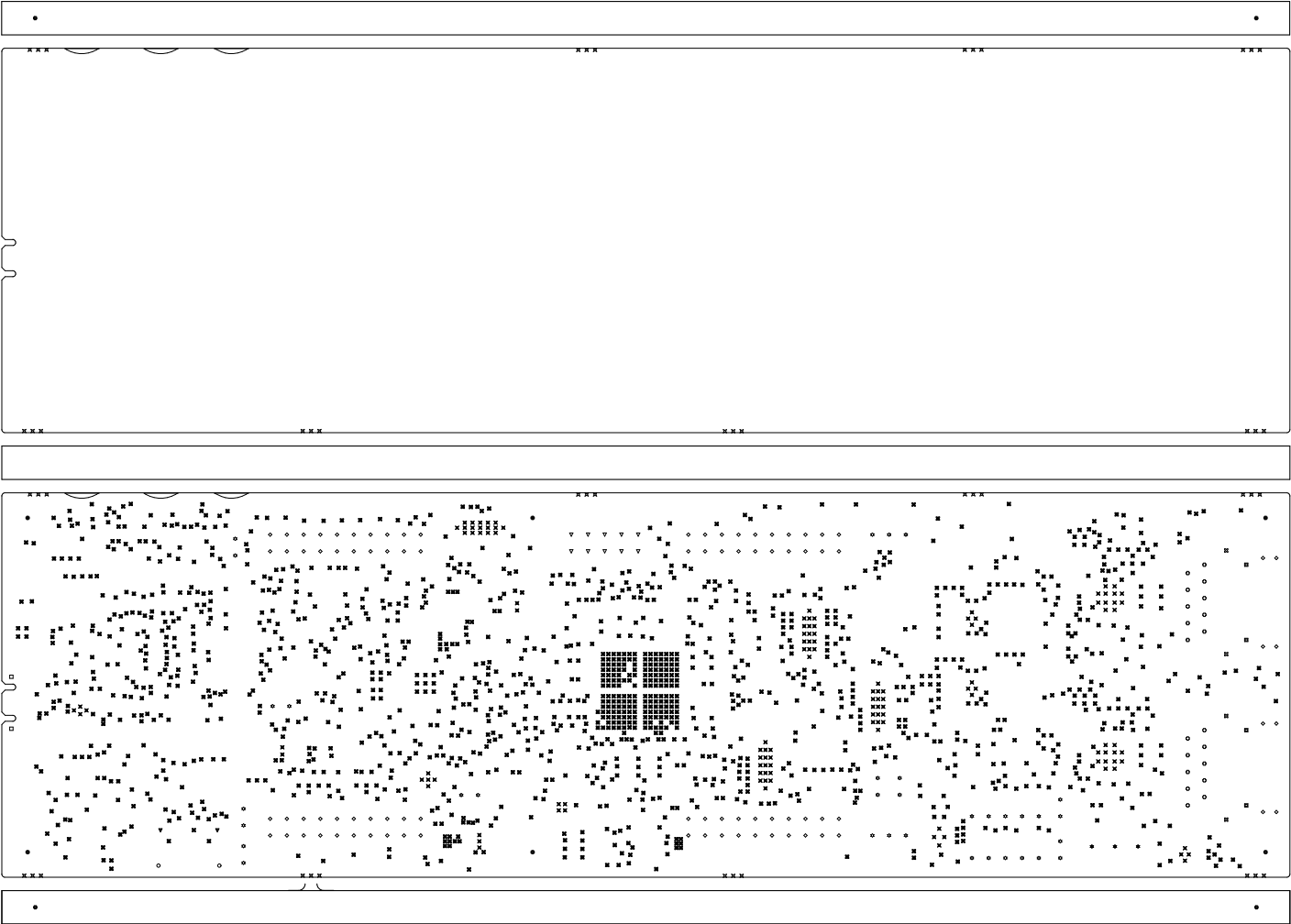
ALL ARTWORK VIEWED FROM TOP SIDE	BOARD #: PROC171	REV: E2	SUN REV: 67 [Locally Modified]
LAYER NAME = Bottom Solder	TID #: N/A		
PLOT NAME = Bottom Solder Mask	GENERATED : 12/27/2023 12:42:52 PM		TEXAS INSTRUMENTS

ALL ARTWORK VIEWED FROM TOP SIDE	BOARD #: PROC171	REV: E2	SUN REV: 67 [Locally Modified]
LAYER NAME = Bottom Overlay	TID #: N/A		
PLOT NAME = Bottom Overlay	GENERATED : 12/27/2023 12:42:53 PM	TEXAS INSTRUMENTS	



Symbol	Count	Hole Size	Plated	Hole Type	Drill Layer Pair	Hole Tolerance (+)	Hole Tolerance (-)
X	128	7.67mil (0.200mm)	PTH	Round	Top Layer - Bottom Layer	3.00mil (0.076mm)	3.00mil (0.076mm)
M	1895	8.00mil (0.203mm)	PTH	Round	Top Layer - Bottom Layer	3.00mil (0.076mm)	3.00mil (0.076mm)
□	2	23.62mil (0.600mm)	PTH	Slot	Top Layer - Bottom Layer	3.00mil (0.076mm)	3.00mil (0.076mm)
X	48	32.00mil (0.813mm)	NPTH	Round	Top Layer - Bottom Layer	3.00mil (0.076mm)	3.00mil (0.076mm)
○	20	35.43mil (0.900mm)	PTH	Round	Top Layer - Bottom Layer	3.00mil (0.076mm)	3.00mil (0.076mm)
▽	10	39.37mil (1.000mm)	PTH	Round	Top Layer - Bottom Layer	3.00mil (0.076mm)	3.00mil (0.076mm)
☆	34	40.00mil (1.016mm)	PTH	Round	Top Layer - Bottom Layer	3.00mil (0.076mm)	3.00mil (0.076mm)
◇	88	40.16mil (1.020mm)	PTH	Round	Top Layer - Bottom Layer	3.00mil (0.076mm)	3.00mil (0.076mm)
*	3	47.24mil (1.200mm)	PTH	Round	Top Layer - Bottom Layer	3.00mil (0.076mm)	3.00mil (0.076mm)
▼	2	62.99mil (1.600mm)	PTH	Slot	Top Layer - Bottom Layer	3.00mil (0.076mm)	3.00mil (0.076mm)
M	4	66.93mil (1.700mm)	PTH	Round	Top Layer - Bottom Layer	3.00mil (0.076mm)	3.00mil (0.076mm)
○	2	82.68mil (2.100mm)	PTH	Slot	Top Layer - Bottom Layer	3.00mil (0.076mm)	3.00mil (0.076mm)
⊗	10	126.00mil (3.200mm)	NPTH	Round	Top Layer - Bottom Layer	3.00mil (0.076mm)	3.00mil (0.076mm)
■	4	127.95mil (3.250mm)	NPTH	Round	Top Layer - Bottom Layer	3.00mil (0.076mm)	3.00mil (0.076mm)
1890 Total							

Slot definitions : Routed Path Length = Calculated from tool start centre position to tool end centre position.
Hole Length = Routed Path Length + Tool Size + Slot length as defined in the PCB layout



ALL ARTWORK VIEWED FROM TOP SIDE	BOARD #: PROC171	REV: E2	SUN REV: 67 [Locally Modified]
LAYER NAME = Drill Drawing	TID #: N/A		
PLOT NAME = Drill Drawing	GENERATED : 12/27/2023 12:42:53 PM	TEXAS INSTRUMENTS	



ALL ARTWORK VIEWED FROM TOP SIDE	BOARD #: PROC171	REV: E2	SUN REV: 67 [Locally Modified]
LAYER NAME = M2 Board Dimensions	TID #: N/A		
PLOT NAME = Board Dimensions	GENERATED : 12/27/2023 12:43:09 PM		TEXAS INSTRUMENTS