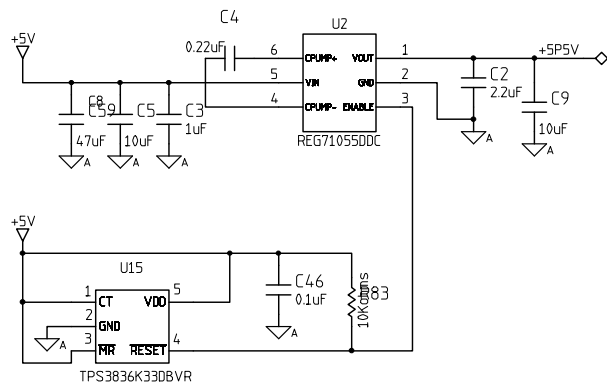
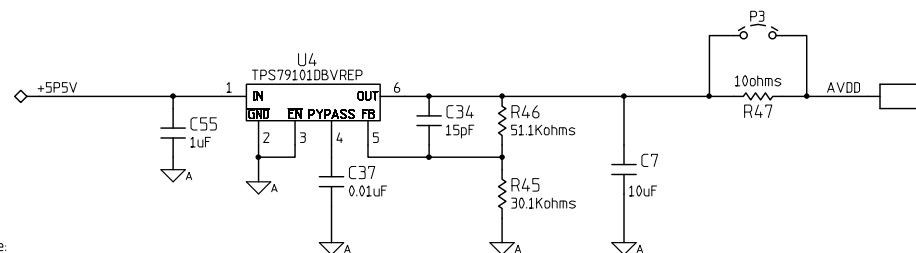


TIPD168

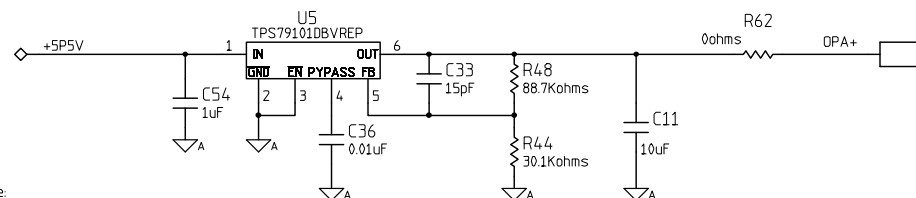


+5.5V CHARGE PUMP



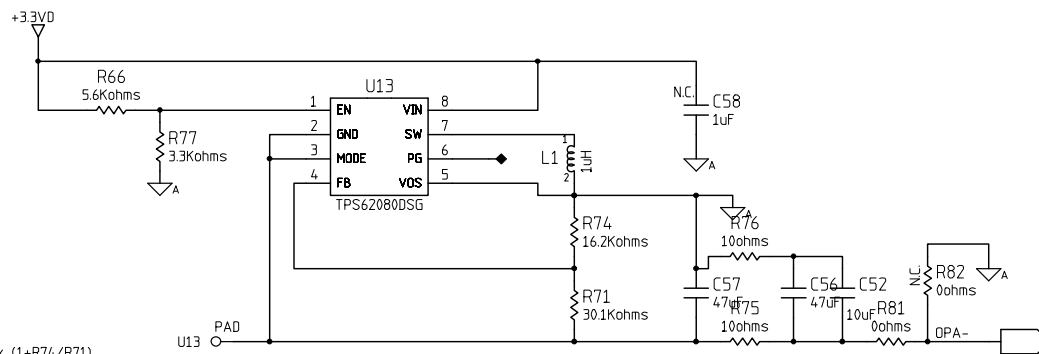
Note:
 $AVDD = 1.2246 \times (1 + R46/R45)$
 $= 3.3V$ (default)

AVDD SUPPLY



Note:
 $OPA+ = 1.2246 \times (1 + R48/R44)$
 $= 4.8V$ (default)

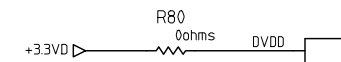
OPA+ SUPPLY



Note:
 $OPA- = -0.45V \times (1 + R74/R71)$
 $= -0.7V$ (default)

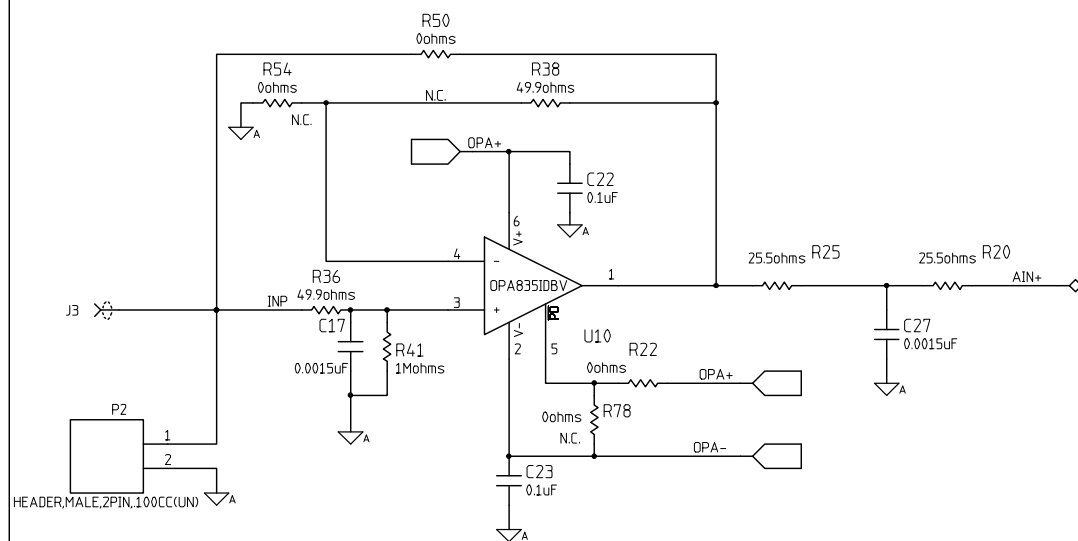
In order to connect OPA- to GND,
 disassemble R81 and assemble R82

OPA- SUPPLY



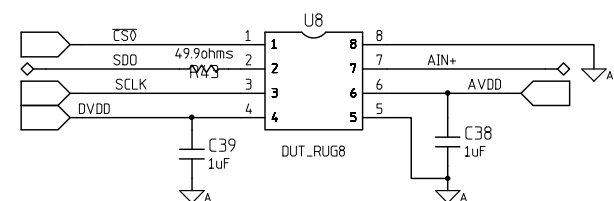
DVDD CONNECTION

TIPD168

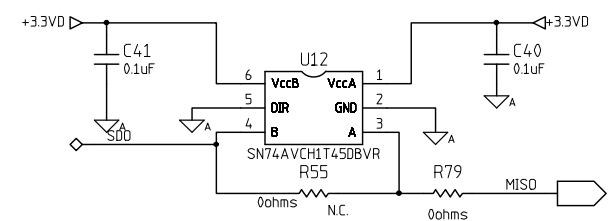


Note:
In order to disable the OPA835 assemble R78
and dissamble R22

INPUT DRIVER



ADS704x ADC



SDO BUFFER

TIPD168