

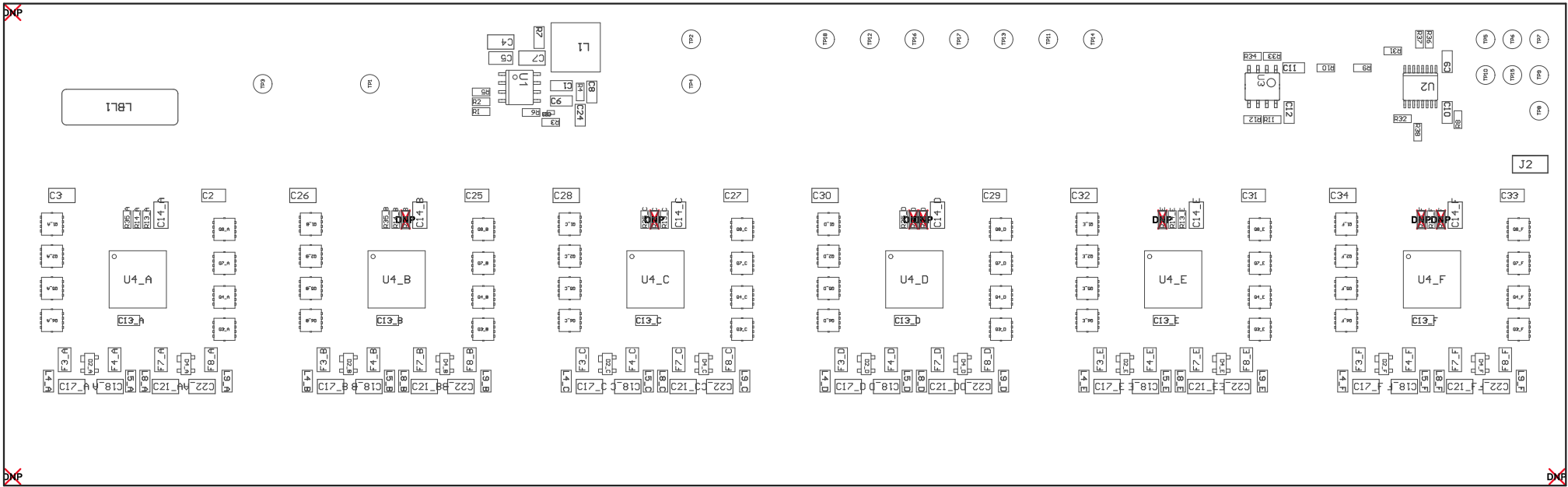
ZZ1 ■Install label in silkscreened box after final wash. Text shall be 8 pt font. Text shall be per the Label Table in the PDF schematic.

ZZ2 ■These assemblies are ESD sensitive, ESD precautions shall be observed.

ZZ3 ■These assemblies must be clean and free from flux and all contaminants. Use of no clean flux is not acceptable.

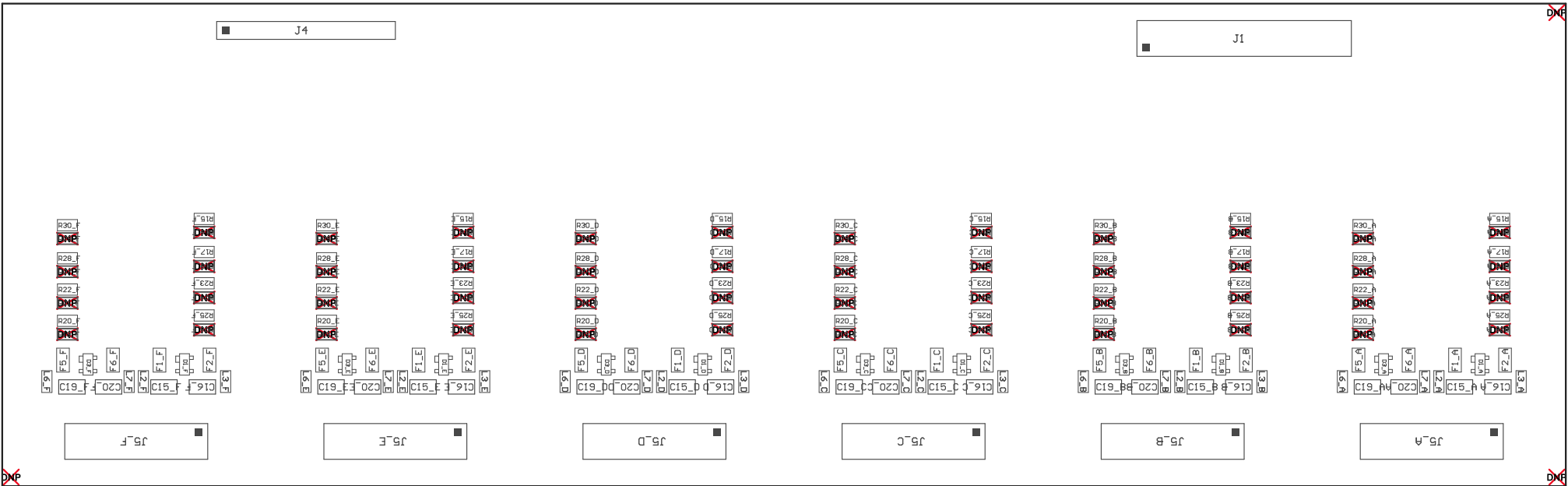
ZZ4 ■These assemblies must comply with workmanship standards IPC-A-610 Class 2, unless otherwise specified.

ZZ5 ■DO NOT TRIM CONNECTOR PINS on J5



COMPONENTS MARKED 'DNP' SHOULD NOT BE POPULATED.
ASSEMBLY VARIANT: 002

PCB VIEWED FROM TOP SIDE	BOARD #: PSIL083	REV: A	SUN REV: Not In VersionControl
	TID #: N/A		
PLOT NAME = Top Assembly Drawing	GENERATED : 5/17/2019 3:51:49 PM	TEXAS INSTRUMENTS	



COMPONENTS MARKED 'DNP' SHOULD NOT BE POPULATED.
ASSEMBLY VARIANT: 002

PCB VIEWED FROM BOTTOM SIDE	BOARD #: PSIL083	REV: A	SUN REV: Not In VersionControl
	TID #: N/A		
PLOT NAME = Bottom Assembly Drawing	GENERATED : 5/17/2019 3:51:53 PM	TEXAS INSTRUMENTS	