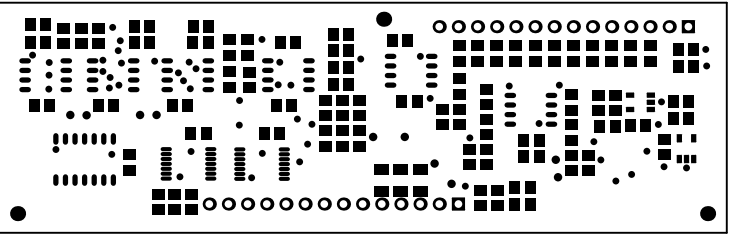
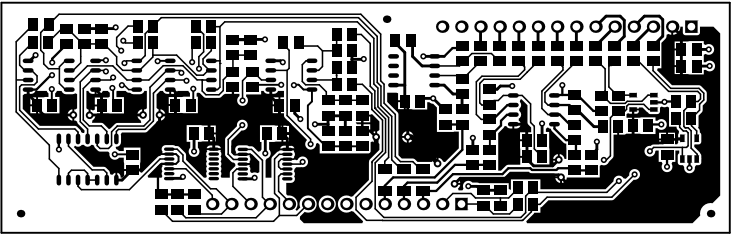


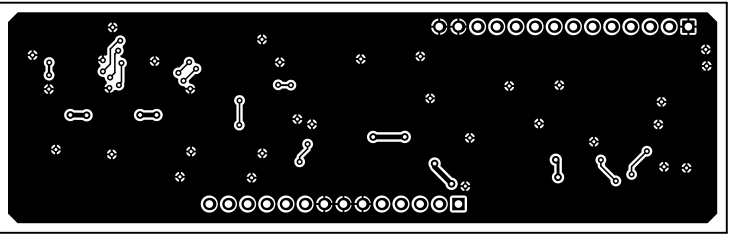
ALL ARTWORK VIEWED FROM TOP SIDE	BOARD #: EVT_007	REV: E2	SUN REV: Not In VersionControl
LAYER NAME = Top Overlay	TID #: N/A		
PLOT NAME = Top Overlay	GENERATED : 3/8/2021	1:43:16 PM	TEXAS INSTRUMENTS



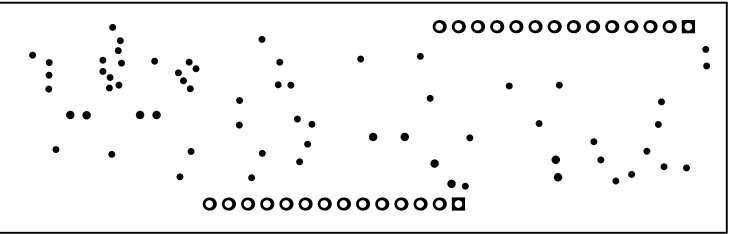
ALL ARTWORK VIEWED FROM TOP SIDE	BOARD #: EVT_007	REV: E2	SUN REV: Not In VersionControl
LAYER NAME = Top Solder	TID #: N/A		
PLOT NAME = Top Solder Mask	GENERATED : 3/8/2021	1:43:17 PM	TEXAS INSTRUMENTS



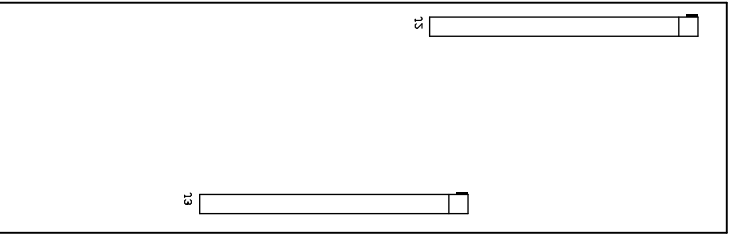
ALL ARTWORK VIEWED FROM TOP SIDE	BOARD #: EVT_007	REV: E2	SUN REV: Not In VersionControl
LAYER NAME = Top Layer	TID #: N/A		
PLOT NAME = Top Layer	GENERATED : 3/8/2021	1:43:19 PM	TEXAS INSTRUMENTS



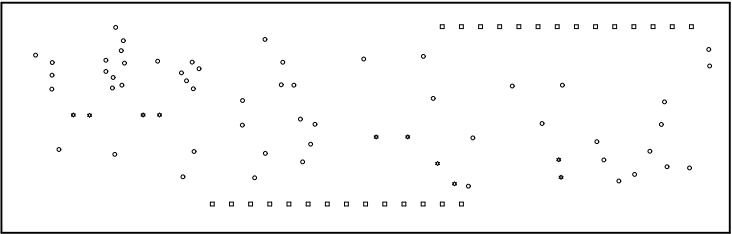
ALL ARTWORK VIEWED FROM TOP SIDE	BOARD #: EVT_007	REV: E2	SUN REV: Not In VersionControl
LAYER NAME = Bottom Layer	TID #: N/A		
PLOT NAME = Bottom Layer	GENERATED : 3/8/2021	1:43:20 PM	TEXAS INSTRUMENTS



ALL ARTWORK VIEWED FROM TOP SIDE	BOARD #: EVT_007	REV: E2	SUN REV: Not In VersionControl
LAYER NAME = Bottom Solder	TID #: N/A		
PLOT NAME = Bottom Solder Mask	GENERATED : 3/8/2021	1:43:22 PM	TEXAS INSTRUMENTS

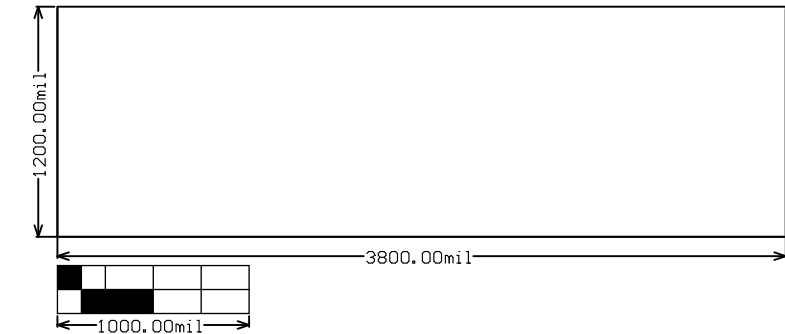


ALL ARTWORK VIEWED FROM TOP SIDE	BOARD #: EVT_007	REV: E2	SUN REV: Not In VersionControl
LAYER NAME = Bottom Overlay	TID #: N/A		
PLOT NAME = Bottom Overlay	GENERATED : 3/8/2021	1:43:23 PM	TEXAS INSTRUMENTS



Symbol	Quantity	Finished Hole Size	Plated	Hole Type	Drill Layer Pair	Hole Tolerance
○	54	16.00mil (0.406mm)	PTH	Round	Top Layer - Bottom Layer	
⚙	10	20.00mil (0.508mm)	PTH	Round	Top Layer - Bottom Layer	
□	28	40.00mil (1.016mm)	PTH	Round	Top Layer - Bottom Layer	
	92 Total					

ALL ARTWORK VIEWED FROM TOP SIDE	BOARD #: EVT_007	REV: E2	SUN REV: Not In VersionControl
LAYER NAME = Drill Drawing	TID #: N/A		
PLOT NAME = Drill Drawing	GENERATED : 3/8/2021	1:43:24 PM	TEXAS INSTRUMENTS



ALL ARTWORK VIEWED FROM TOP SIDE	BOARD #: EVT_007	REV: E2	SUN REV: Not In VersionControl
LAYER NAME = M2 Board Dimensions	TID #: N/A		
PLOT NAME = Board Dimensions	GENERATED : 3/8/2021 1:43:26 PM	TEXAS INSTRUMENTS	