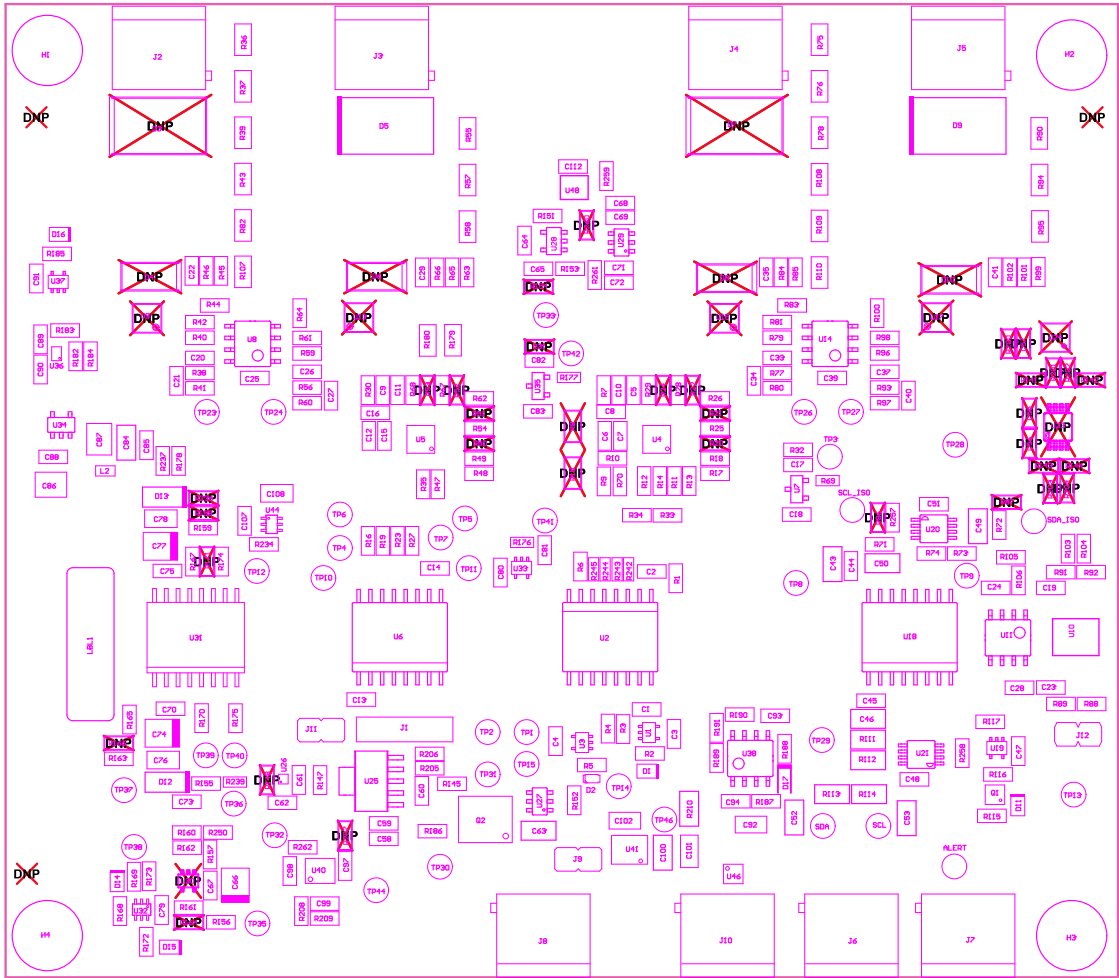


- 221 ■ Install label in silkscreened box after final wash. Text shall be 8 pt font. Text shall be per the Label Table in the PDF schematic.
- 222 ■ These assemblies are ESD sensitive, ESD precautions shall be observed.
- 223 ■ These assemblies must be clean and free from flux and all contaminants. Use of no clean flux is not acceptable.
- 224 ■ These assemblies must comply with workmanship standards IPC-A-610 Class 2, unless otherwise specified.





COMPONENTS MARKED 'DNP' SHOULD NOT BE POPULATED.

ASSEMBLY VARIANT: 001

PCB VIEWED FROM BOTTOM SIDE	BOMID #:	TIDA-00420_B1M_A06P128	REV:	E2	SUN REV:	Not In VersionControl
H6 Assembly Bottom	TID #:	00420				
PLOT NAME: "Bottom Assembly Drawing"	GENERATED:	3/8/2021	4:07:58 PM	TEXAS INSTRUMENTS		