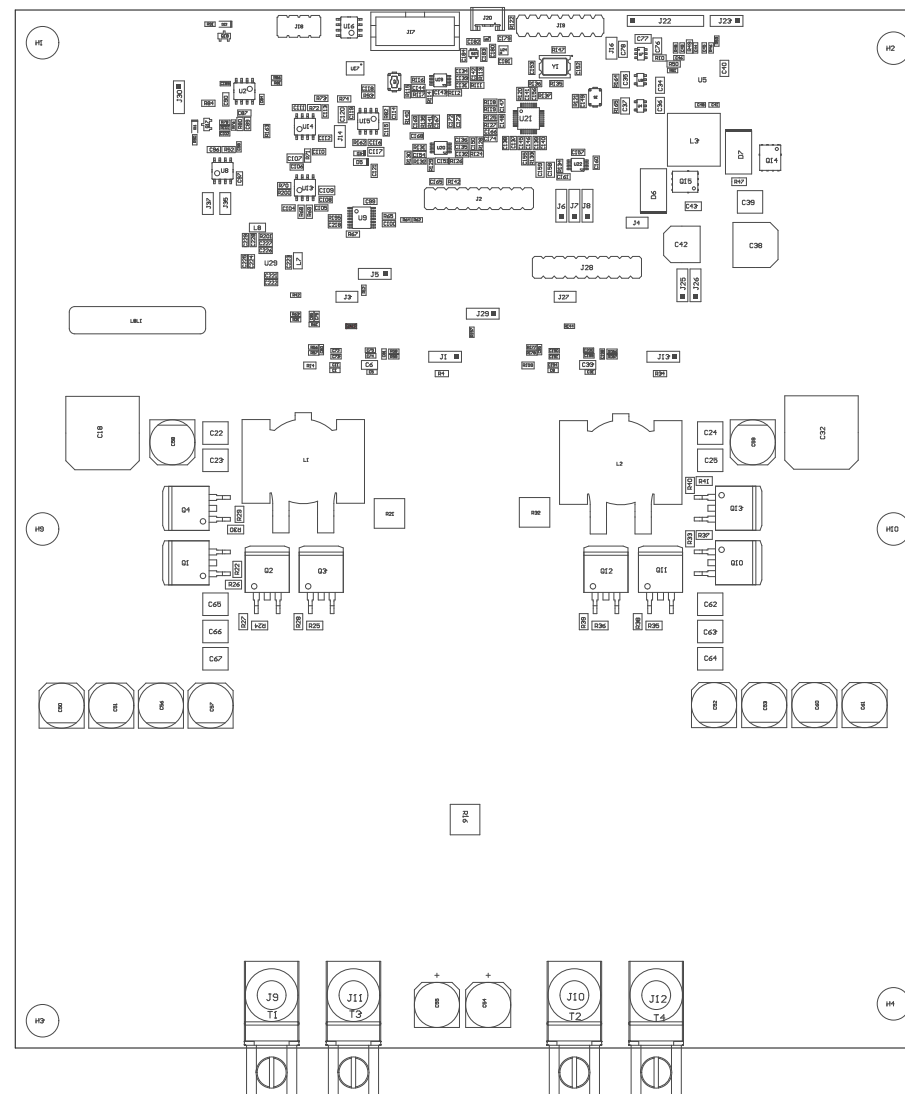


222 ■ Install label in unobscured box after final wash. Text shall be 8 pt font. Text shall be per the Label Table in the PDF schematic.

222 ■ These assemblies are CSD sensitive. CSD precautions shall be observed.

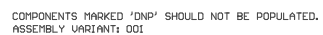
222 ■ These assemblies must be clean and free from flux and all contaminants. Use of no clean flux is not acceptable.

222 ■ These assemblies must comply with cleanliness standards IPC-A-610 Class 2, unless otherwise specified.



COMPONENTS MARKED 'DNP' SHOULD NOT BE POPULATED.  
ASSEMBLY VARIANT: 001

PCB VIEWED FROM TOP SIDE	BOARD #: TIDA-01041	REV: A SUN REV:	Not In VersionControl
PLOT NAME = Top Assembly Drawing	GENERATED : 3/11/2019 8:38:33 AM	TEXAS INSTRUMENTS	



PLOT NAME = Bottom Assembly Drawing

GENERATED : 3/11/2019 8:38:34 AM

TEXAS INSTRUMENTS