

## DC TO 4-Gbps DUAL 1:2 MULTIPLEXER/REPEATER/EQUALIZER

### FEATURES

- Receiver Equalization and Selectable Driver Preemphasis to Counteract High-Frequency Transmission Line Losses
- Integration of Two-Serial Port
- Selectable Loopback
- Typical Power Consumption 650 mW
- 30-ps Deterministic Jitter
- On-Chip 100- $\Omega$  Receiver and Driver Differential Termination Resistors Eliminate External Components and Reflection from Stubs
- 3.3-V Nominal Power Supply

- 48-Terminal QFN (Quad Flatpack) 7 mm  $\times$  7 mm  $\times$  1 mm, 0.5-mm Terminal Pitch
- Temperature Range: -40°C to 85°C

### APPLICATIONS

- Bidirectional Link Replicator
- Signal Conditioner
- XAUI 802.3ae Protocol Backplane Redundancy
- Host Adapter (Applications With Internal and External Connection to SERDES)
- Signaling Rates DC to 4 Gbps Including XAUI, GbE, FC, HDTV

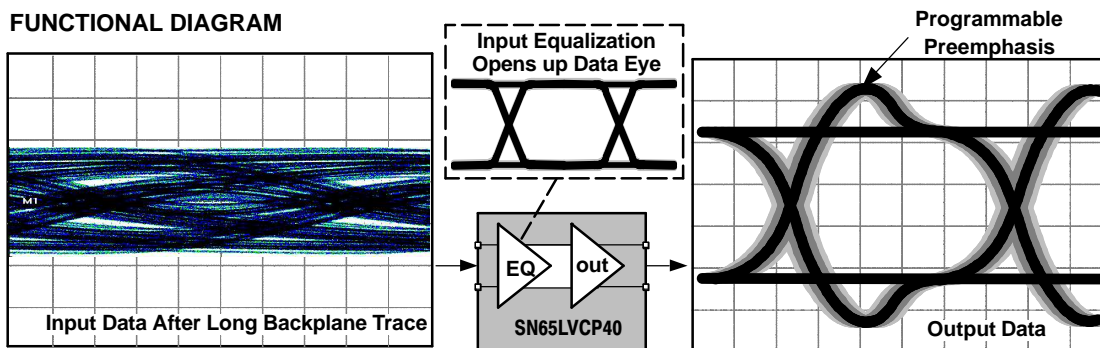
### DESCRIPTION

The SN65LVCP40 is a signal conditioner and data multiplexer optimized for backplanes. Input equalization and programmable output preemphasis support data rates up to 4 Gbps. Common applications are redundancy switching, signal buffering, or performance improvements on legacy backplane hardware.

The SN65LVCP40 combines a pair of 1:2 buffers with a pair of 2:1 multiplexers (mux). Selectable switch-side loopback supports system testing. System interconnects and serial backplane applications of up to 4 Gbps are supported. Each of the two independent channels consists of a transmitter with a fan-out of two, and a receiver with a 2:1 input multiplexer.

The drivers provide four selectable levels of preemphasis to compensate for transmission line losses. The receivers incorporate receive equalization and compensates for input transmission line loss. This minimizes deterministic jitter in the link. The equalization is optimized to compensate for a FR-4 backplane trace with 5-dB, high-frequency loss between 375 MHz and 1.875 GHz. This corresponds to a 24-inch long FR-4 trace with 6-mil trace width.

This device operates from a single 3.3-V supply. The device has integrated 100- $\Omega$  line termination and provides self-biasing. The input tolerates most differential signaling levels such as LVDS, LVPECL or CML. The output impedance matches 100- $\Omega$  line impedance. The inputs and outputs may be ac coupled for best interconnectivity with other devices such as SERDES I/O or additional XAUI multiplexer buffer. With ac coupling, jitter is the lowest.



Please be aware that an important notice concerning availability, standard warranty, and use in critical applications of Texas Instruments semiconductor products and disclaimers thereto appears at the end of this data sheet.



These devices have limited built-in ESD protection. The leads should be shorted together or the device placed in conductive foam during storage or handling to prevent electrostatic damage to the MOS gates.

## DESCRIPTION (CONTINUED)

The SN65LVCP40 is packaged in a 7 mm × 7 mm × 1 mm QFN (quad flatpack no-lead) lead-free package, and is characterized for operation from -40°C to 85°C.

### AVAILABLE OPTIONS

| T <sub>A</sub> | DESCRIPTION        | PACKAGED DEVICE <sup>(1)</sup> |
|----------------|--------------------|--------------------------------|
|                |                    | RGZ (48 pin)                   |
| -40°C to 85°C  | Serial multiplexer | SN65LVCP40                     |

(1) The package is available taped and reeled. Add an R suffix to device types (e.g., SN65LVCP40RGZR).

## ABSOLUTE MAXIMUM RATINGS

over operating free-air temperature range (unless otherwise noted)<sup>(1)</sup>

|                 |                                     |                             | UNIT                                      |
|-----------------|-------------------------------------|-----------------------------|---|
| V <sub>CC</sub> | Supply voltage range <sup>(2)</sup> |                             | -0.5 V to 6 V                             |
| Voltage range   |                                     | Control inputs, all outputs | -0.5 V to (V <sub>CC</sub> + 0.5 V)       |
|                 |                                     | Receiver inputs             | -0.5 V to 4 V                             |
| ESD             | Human Body Model <sup>(3)</sup>     | All pins                    | 4 kV                                      |
|                 | Charged-Device Model <sup>(4)</sup> | All pins                    | 500 V                                     |
| T <sub>J</sub>  | Maximum junction temperature        |                             | See Package Thermal Characteristics Table |

- (1) Stresses beyond those listed under absolute maximum ratings may cause permanent damage to the device. These are stress ratings only and functional operation of the device at these or any other conditions beyond those indicated under recommended operating conditions is not implied. Exposure to absolute-maximum-rated conditions for extended periods may affect device reliability.
- (2) All voltage values, except differential I/O bus voltages, are with respect to network ground terminal.
- (3) Tested in accordance with JEDEC Standard 22, Test Method A114-A.
- (4) Tested in accordance with JEDEC Standard 22, Test Method C101.

## PACKAGE THERMAL CHARACTERISTICS

| PACKAGE THERMAL CHARACTERISTICS <sup>(1)</sup> |  | NOM  | UNIT |
|--|--|------|------|
| θ <sub>JA</sub> (junction-to-ambient)          | 4-layer JEDEC Board (JESD51-7) using eight GND-vias Ø-0.2 on the center pad as shown in the section: <i>Recommended pcb footprint</i> with boundary and environment conditions of JEDEC Board (JESD51-2) | 33   | °C/W |
| θ <sub>JB</sub> (junction-to-board)            |  | 20   | °C/W |
| θ <sub>JC</sub> (junction-to-case)             |  | 23.6 | °C/W |
| PSI-jt (junction-to-top pseudo)                |  | 0.6  | °C/W |
| PSI-jb (junction-to-board pseudo)              |  | 19.4 | °C/W |
| θ <sub>JP</sub> (junction-to-pad)              |  | 5.4  | °C/W |

(1) See application note [SPRA953](http://www-s.ti.com/sc/psheets/spra953/spra953.pdf) for a detailed explanation of thermal parameters (<http://www-s.ti.com/sc/psheets/spra953/spra953.pdf>).

**RECOMMENDED OPERATING CONDITIONS**

|                             |   | MIN   | NOM | MAX                   | UNIT                                       |      |
|-----------------------------|---|---|-----|-----------------------|--|------|
| dR                          | Operating data rate   |   |     | 4                     | Gbps                                       |      |
| V <sub>CC</sub>             | Supply voltage  | 3.135   | 3.3 | 3.465                 | V  |      |
| V <sub>CC(N)</sub>          | Supply voltage noise amplitude                                  | 10 Hz to 2 GHz  |     | 20                    | mV   |      |
| T <sub>J</sub>              | Junction temperature  |   |     | 125                   | °C   |      |
| T <sub>A</sub>              | Operating free-air temperature <sup>(1)</sup>                   | -40   |     | 85                    | °C   |      |
| <b>DIFFERENTIAL INPUTS</b>  |   |   |     |                       |  |      |
| V <sub>ID</sub>             | Receiver peak-to-peak differential input voltage <sup>(2)</sup> | dR <sub>(in)</sub> ≤ 1.25 Gbps                                |     | 100                   | 1750                                       | mVpp |
|                             |   | 1.25 Gbps < dR <sub>(in)</sub> ≤ 3.125 Gbps                   |     | 100                   | 1560                                       | mVpp |
|                             |   | dR <sub>(in)</sub> > 3.125 Gbps                               |     | 100                   | 1000                                       | mVpp |
| V <sub>ICM</sub>            | Receiver common-mode input voltage                              | Note: for best jitter performance ac coupling is recommended. |     | 1.5                   | 1.6 V <sub>CC</sub> - $\frac{ V_{ID} }{2}$ | V    |
| <b>CONTROL INPUTS</b>       |   |   |     |                       |  |      |
| V <sub>IH</sub>             | High-level input voltage  | 2   |     | V <sub>CC</sub> + 0.3 | V  |      |
| V <sub>IL</sub>             | Low-level input voltage   | -0.3  |     | 0.8                   | V  |      |
| <b>DIFFERENTIAL OUTPUTS</b> |   |   |     |                       |  |      |
| R <sub>L</sub>              | Differential load resistance                                    | 80  | 100 | 120                   | Ω  |      |

(1) Maximum free-air temperature operation is allowed as long as the device maximum junction temperature is not exceeded.

(2) Differential input voltage V<sub>ID</sub> is defined as |IN+ – IN–|.

**ELECTRICAL CHARACTERISTICS**

over operating free-air temperature range (unless otherwise noted)

| PARAMETER                   | TEST CONDITIONS  | MIN  | TYP <sup>(1)</sup> | MAX  | UNIT |
|-----------------------------|--|--|--------------------|------|------|
| <b>DIFFERENTIAL INPUTS</b>  |  |  |                    |      |      |
| V <sub>IT+</sub>            | Positive going differential input high threshold                       |  |                    | 50   | mV   |
| V <sub>IT–</sub>            | Negative going differential input low threshold                        | -50  |                    |      | mV   |
| A <sub>(EQ)</sub>           | Equalizer gain   | From 375 MHz to 1.875 GHz  |                    | 5    | dB   |
| R <sub>T(D)</sub>           | Termination resistance, differential                                   | 80   | 100                | 120  | Ω    |
| V <sub>BB</sub>             | Open-circuit Input voltage (input self-bias voltage)                   | AC-coupled inputs  |                    | 1.6  | V    |
| R <sub>(BBDC)</sub>         | Biasing network dc impedance   |  | 30                 |      | kΩ   |
| R <sub>(BBAC)</sub>         | Biasing network ac impedance   | 375 MHz  |                    | 42   | Ω    |
|                             |  | 1.875 GHz  |                    | 8.4  |      |
| <b>DIFFERENTIAL OUTPUTS</b> |  |  |                    |      |      |
| V <sub>OH</sub>             | High-level output voltage  | R <sub>L</sub> = 100 Ω±1%,<br>PRES_1 = PRES_0=0;<br>PREL_1 = PREL_0=0; 4 Gbps alternating<br>1010-pattern;<br>Figure 1 |                    | 650  | mVpp |
| V <sub>OL</sub>             | Low-level output voltage   |  |                    | -650 | mVpp |
| V <sub>ODB(PP)</sub>        | Output differential voltage without preemphasis <sup>(2)</sup>         | 1000   | 1300               | 1500 | mVpp |
| V <sub>OCM</sub>            | Output common mode voltage   |  | 1.65               |      | V    |
| ΔV <sub>OC(SS)</sub>        | Change in steady-state common-mode output voltage between logic states | See Figure 6   |                    | 1    | mV   |

(1) All typical values are at T<sub>A</sub> = 25°C and V<sub>CC</sub> = 3.3 V supply unless otherwise noted. They are for reference purposes and are not production tested.

(2) Differential output voltage V<sub>(ODB)</sub> is defined as |OUT+ – OUT–|.

**ELECTRICAL CHARACTERISTICS (continued)**

over operating free-air temperature range (unless otherwise noted)

| PARAMETER                |   | TEST CONDITIONS   |   | MIN | TYP <sup>(1)</sup> | MAX | UNIT       |
|--------------------------|---|---|---|-----|--------------------|-----|------------|
| $V_{(PE)}$               | Output preemphasis voltage ratio,<br>$\frac{V_{ODB(PP)}}{V_{ODPE(PP)}}$ | $R_L = 100 \Omega \pm 1\%$ ;<br>$x = L$ or $S$ ;<br>See <a href="#">Figure 1</a>  | PRE <sub>x_1</sub> :PRE <sub>x_0</sub> = 00 |     | 0                  |     | dB         |
|                          |   |   | PRE <sub>x_1</sub> :PRE <sub>x_0</sub> = 01 |     | 3                  |     |            |
|                          |   |   | PRE <sub>x_1</sub> :PRE <sub>x_0</sub> = 10 |     | 6                  |     |            |
|                          |   |   | PRE <sub>x_1</sub> :PRE <sub>x_0</sub> = 11 |     | 9                  |     |            |
| $t_{(PRE)}$              | Preemphasis duration measurement  | Output preemphasis is set to 9 dB during test<br>PRE <sub>x_x</sub> = 1;<br>Measured with a 100-MHz clock signal;<br>$R_L = 100 \Omega, \pm 1\%$ , See <a href="#">Figure 2</a> |   |     | 175                |     | ps         |
| $r_o$                    | Output resistance   | Differential on-chip termination between OUT+ and OUT–  |   |     | 100                |     | $\Omega$   |
| <b>CONTROL INPUTS</b>    |   |   |   |     |                    |     |            |
| $I_{IH}$                 | High-level Input current  | $V_{IN} = V_{CC}$   |   |     |                    | 5   | $\mu A$    |
| $I_{IL}$                 | Low-level Input current   | $V_{IN} = GND$  |   |     | 90                 | 125 | $\mu A$    |
| $R_{(PU)}$               | Pullup resistance   |   |   |     | 35                 |     | k $\Omega$ |
| <b>POWER CONSUMPTION</b> |   |   |   |     |                    |     |            |
| $P_D$                    | Device power dissipation  | All outputs terminated 100 $\Omega$   |   |     | 650                | 880 | mW         |
| $I_{CC}$                 | Device current consumption  | All outputs terminated 100 $\Omega$   | PRBS 2 <sup>7</sup> -1 pattern at 4 Gbps    |     |                    | 254 | mA         |

**SWITCHING CHARACTERISTICS**

over operating free-air temperature range (unless otherwise noted)

| PARAMETER                   |  | TEST CONDITIONS  |  | MIN | TYP <sup>(1)</sup> | MAX | UNIT   |
|-----------------------------|--|--|--|-----|--------------------|-----|--------|
| <b>MULTIPLEXER</b>          |  |  |  |     |                    |     |        |
| $t_{(SM)}$                  | Multiplexer switch time                          | Multiplexer or loopback control to valid output  |  |     | 3                  | 6   | ns     |
| <b>DIFFERENTIAL OUTPUTS</b> |  |  |  |     |                    |     |        |
| $t_{PLH}$                   | Low-to-high propagation delay                    | Propagation delay input to output<br>See <a href="#">Figure 4</a>  |  |     | 0.5                | 1   | ns     |
| $t_{PHL}$                   | High-to-low propagation delay                    |  |  |     | 0.5                | 1   | ns     |
| $t_r$                       | Rise time  | 20% to 80% of $V_{O(DB)}$ ; Test Pattern: 100-MHz clock signal;<br>See <a href="#">Figure 3</a> and <a href="#">Figure 7</a> |  |     | 80                 |     | ps     |
| $t_f$                       | Fall time  |  |  |     | 80                 |     | ps     |
| $t_{sk(p)}$                 | Pulse skew, $ t_{PHL} - t_{PLH} $ <sup>(2)</sup> |  |  |     |                    | 20  | ps     |
| $t_{sk(o)}$                 | Output skew <sup>(3)</sup>                       | All outputs terminated with 100 $\Omega$   |  |     | 25                 | 200 | ps     |
| $t_{sk(pp)}$                | Part-to-part skew <sup>(4)</sup>                 |  |  |     |                    | 500 | ps     |
| RJ                          | Device random jitter, rms                        | See <a href="#">Figure 7</a> for test circuit.<br>BERT setting 10 <sup>-15</sup><br>Alternating 10-pattern.                  |  |     | 0.8                | 2   | ps-rms |

(1) All typical values are at 25°C and with 3.3 V supply unless otherwise noted.

(2)  $t_{sk(p)}$  is the magnitude of the time difference between the  $t_{PLH}$  and  $t_{PHL}$  of any output of a single device.(3)  $t_{sk(o)}$  is the magnitude of the time difference between the  $t_{PLH}$  and  $t_{PHL}$  of any two outputs of a single device.(4)  $t_{sk(pp)}$  is the magnitude of the difference in propagation delay times between any specified terminals of two devices when both devices operate with the same supply voltages, at the same temperature, and have identical packages and test circuits.

## SWITCHING CHARACTERISTICS (continued)

over operating free-air temperature range (unless otherwise noted)

| PARAMETER |  | TEST CONDITIONS   |                               | MIN | TYP <sup>(1)</sup> | MAX | UNIT |
|-----------|--|---|-------------------------------|-----|--------------------|-----|------|
| DJ        | Intrinsic deterministic device jitter <sup>(5)(6)</sup> , peak-to-peak | 0 dB preemphasis (PRE <sub>x</sub> = 0); See Figure 7 for the test circuit. | PRBS 2 <sup>7-1</sup> pattern |     |                    | 30  | ps   |
|           | Absolute deterministic output jitter <sup>(7)</sup> , peak-to-peak     | 0 dB preemphasis (PRE <sub>x</sub> = 0); See Figure 7 for the test circuit. | PRBS 2 <sup>7-1</sup> pattern |     | 7                  |     | ps   |
|           |  |   |                               |     | 20                 |     | ps   |

- (5) Intrinsic deterministic device jitter is a measurement of the deterministic jitter contribution from the device. It is derived by the equation  $(DJ_{(OUT)} - DJ_{(IN)})$ , where  $DJ_{(OUT)}$  is the total peak-to-peak deterministic jitter measured at the output of the device in pspp.  $DJ_{(IN)}$  is the peak-to-peak deterministic jitter of the pattern generator driving the device.
- (6) The SN65LVCP40 built-in passive input equalizer compensates for ISI. For a 20-inch FR4 transmission line with 8-mil trace width, the LVCP40 typically reduces jitter by 60 ps from the device input to the device output.
- (7) Absolute deterministic output jitter reflects the deterministic jitter measured at the SN65LVCP40 output. The value is a real measured value with a Bit error tester as described in Figure 7. The absolute DJ reflects the sum of all deterministic jitter components accumulated over the link:  $DJ_{(absolute)} = DJ_{(signal\ generator)} + DJ_{(transmission\ line)} + DJ_{(intrinsic(LVCP40))}$ .

## PIN ASSIGNMENTS

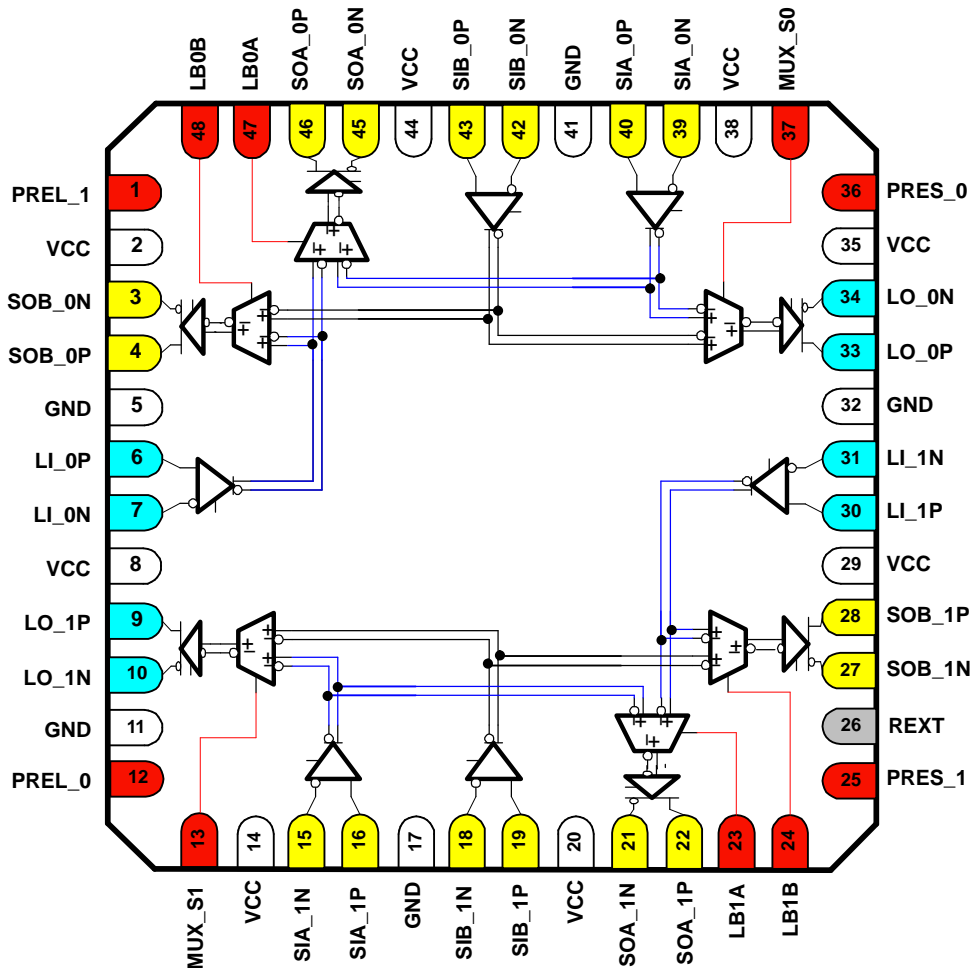
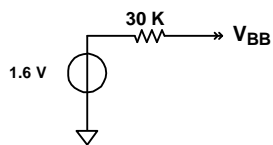
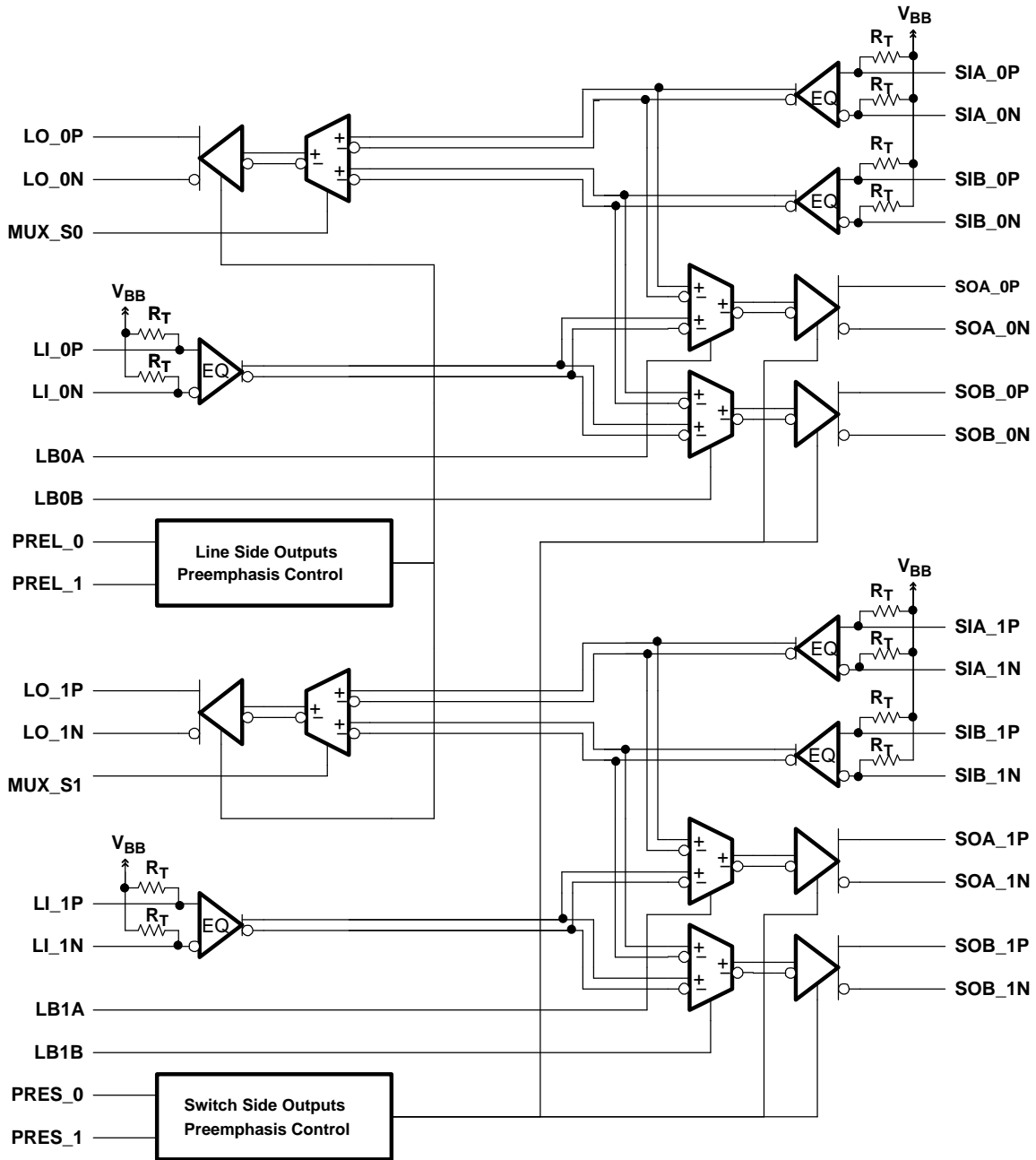


Table 1. Signal Descriptions

| SIGNAL                            | PIN(S)                                | TYPE                           | SIGNAL TYPE         | DESCRIPTION  |
|-----------------------------------|---------------------------------------|--------------------------------|---------------------|--|
| <b>LINE SIDE HIGH-SPEED I/O</b>   |                                       |                                |                     |  |
| LI_0P<br>LI_0N                    | 6<br>7                                | I (w/ 50-Ω termination to VBB) | PECL/CML compatible | Differential input, port_0 line side   |
| LI_1P<br>LI_1N                    | 30<br>31                              | I (w/ 50-Ω termination to VBB) | PECL/CML compatible | Differential input, port_1 line side   |
| LO_0P<br>LO_0N                    | 33<br>34                              | O                              | VML <sup>(1)</sup>  | Differential output, port_0 line side  |
| LO_1P<br>LO_1N                    | 9<br>10                               | O                              | VML <sup>(1)</sup>  | Differential output, port_1 line side  |
| <b>SWITCH SIDE HIGH-SPEED I/O</b> |                                       |                                |                     |  |
| SIA_0P<br>SIA_0N                  | 40<br>39                              | I (w/ 50-Ω termination to VBB) | CML/PECL compatible | Differential input, mux_0 switch_A_side  |
| SIB_0P<br>SIB_0N                  | 43<br>42                              | I (w/ 50-Ω termination to VBB) | CML/PECL compatible | Differential input, mux_0 switch_B_side  |
| SIA_1P<br>SIA_1N                  | 16<br>15                              | I (w/ 50-Ω termination to VBB) | CML/PECL compatible | Differential input, mux_1 switch_A_side  |
| SIB_1P<br>SIB_1N                  | 19<br>18                              | I (w/ 50-Ω termination to VBB) | CML/PECL compatible | Differential input, mux_1 switch_B_side  |
| SOA_0P<br>SOA_0N                  | 46<br>45                              | O                              | VML <sup>(1)</sup>  | Differential output, mux_0 switch_A_side   |
| SOB_0P<br>SOB_0N                  | 4<br>3                                | O                              | VML <sup>(1)</sup>  | Differential output, mux_0 switch_B_side   |
| SOA_1P<br>SOA_1N                  | 22<br>21                              | O                              | VML <sup>(1)</sup>  | Differential output, mux_1 switch_A_side   |
| SOB_1P<br>SOB_1N                  | 28<br>27                              | O                              | VML <sup>(1)</sup>  | Differential output, mux_1 switch_B_side   |
| <b>CONTROL SIGNALS</b>            |                                       |                                |                     |  |
| PREL_0<br>PREL_1                  | 12<br>1                               | I (w/ 35-kΩ pullup)            | LVTTTL              | Output preemphasis control, line side port_0 and port_1. Has internal pull-up. See <b>Preemphasis Controls PREL_0, PREL_1, PRES_0 and PRES</b> for function definition.  |
| PRES_0<br>PRES_1                  | 36<br>25                              | I (w/ 35-kΩ pullup)            | LVTTTL              | Output preemphasis control, switch side port_0 and port_1. See <b>Preemphasis Controls PREL_0, PREL_1, PRES_0 and PRES</b> for function definition.  |
| LB0A<br>LB0B                      | 47<br>48                              | I (w/ 35-kΩ pullup)            | LVTTTL              | Loopback control for mux_0 switch side. See <b>Loopback Controls LB0A, LB0B, LB1A and LB1B</b> for function definition.  |
| LB1A<br>LB1B                      | 23<br>24                              | I (w/ 35-kΩ pullup)            | LVTTTL              | Loopback control for mux_1 switch side. See <b>Loopback Controls LB0A, LB0B, LB1A and LB1B</b> for function definition.  |
| MUX_S0<br>MUX_S1                  | 37<br>13                              | I (w/ 35-kΩ pullup)            | LVTTTL              | Port A and B multiplex control of mux_0 and mux_1. See <b>Multiplex Controls MUX_S0 and MUX_S1</b> for function definition.  |
| REXT                              | 26                                    |                                | N/A                 | No connect. This pin is unused and can be left open or tied to GND with any resistor.  |
| <b>POWER SUPPLY</b>               |                                       |                                |                     |  |
| VCC                               | 2, 8, 14,<br>20, 29,<br>35, 38,<br>44 | PWR                            |                     | Power supply 3.3 V ±5%   |
| GND                               | 5, 11, 17,<br>32, 41                  | PWR                            |                     | Power supply return  |
| GND<br>Center Pad                 |                                       | PWR                            |                     | The ground center pad is the metal contact at the bottom of the 48-pin package. It must be connected to the GND plane. At least 4 vias are recommended to minimize inductance and provide a solid ground. See the package drawing for the via placement. |

- (1) VML stands for Voltage Mode logic; VML provides a differential output impedance of 100-Ω. VML offers the benefits of CML and consumes less power.

**FUNCTIONAL BLOCK DIAGRAM**



- Note:**
- V<sub>BB</sub>:** Receiver input internal biasing voltage (allows ac coupling)
  - EQ:** Input Equalizer (compensates for frequency dependent transmission line loss of backplanes)
  - R<sub>T</sub>:** Internal 50-Ohm receiver termination (100-Ohm differential)
- Preemphasis:** Output precompensation for transmission line losses

## FUNCTIONAL DEFINITIONS

Table 2. Multiplex Controls MUX\_S0 and MUX\_S1

| MUX_Sn <sup>(1)</sup> | MUX FUNCTION         |
|-----------------------|----------------------|
| 0                     | MUX_n select input B |
| 1                     | MUX_n select input A |

(1) n = 0 or 1

Table 3. Loopback Controls LB0A, LB0B, LB1A and LB1B

| LBnx <sup>(1)</sup> | LOOPBACK FUNCTION   |
|---------------------|---|
| 0                   | Enable loopback of S <sub>lx</sub> input to S <sub>Ox</sub> output  |
| 1                   | Disable loopback of S <sub>lx</sub> input to S <sub>Ox</sub> output |

(1) n = 0 or 1, x = A or B

Table 4. Multiplexer and Loopback Controls

| INPUTS / OUTPUTS | SOA_0    | SOB_0    | SOA_1    | SOB_1    | LO_0       | LO_1       |
|------------------|----------|----------|----------|----------|------------|------------|
| SIA_0            | LB0A = 0 | x        | x        | x        | MUX_S0 = 1 | x          |
| SIB_0            | x        | LB0B = 0 | x        | x        | MUX_S0 = 0 | x          |
| SIA_1            | x        | x        | LB1A = 0 | x        | x          | MUX_S1 = 1 |
| SIB_1            | x        | x        | x        | LB1B = 0 | x          | MUX_S1 = 0 |
| LI_0             | LB0A = 1 | LB0B = 1 | x        | x        | x          | x          |
| LI_1             | x        | x        | LB1A = 1 | LB1B = 1 | x          | x          |

Table 5. Preemphasis Controls PREL\_0, PREL\_1, PRES\_0, and PRES\_1

| PREx_1 <sup>(1)</sup> | PREx_0 <sup>(1)</sup> | OUTPUT<br>PREEMPHASIS<br>LEVEL IN dB | OUTPUT LEVEL IN mVpp |               | TYPICAL FR4<br>TRACE LENGTH |
|-----------------------|-----------------------|--------------------------------------|----------------------|---------------|-----------------------------|
|                       |                       |                                      | DEEMPHASIZED         | PREEMPHASIZED |                             |
| 0                     | 0                     | 0 dB                                 | 1200                 | 1200          | 10 inches of FR4 trace      |
| 0                     | 1                     | 3 dB                                 | 850                  | 1200          | 20 inches of FR4 trace      |
| 1                     | 0                     | 6 dB                                 | 600                  | 1200          | 30 inches of FR4 trace      |
| 1                     | 1                     | 9 dB                                 | 425                  | 1200          | 40 inches of FR4 trace      |

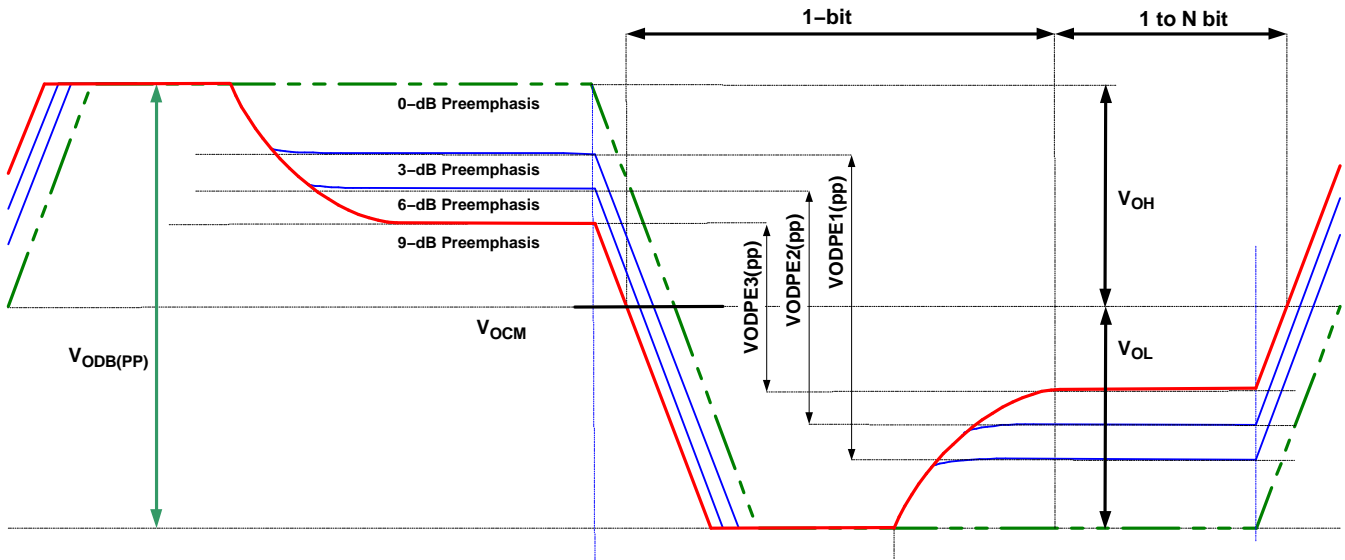
(1) x = L or S

Preemphasis is the primary signal conditioning mechanism. See [Figure 1](#) and [Figure 2](#) for further definition.

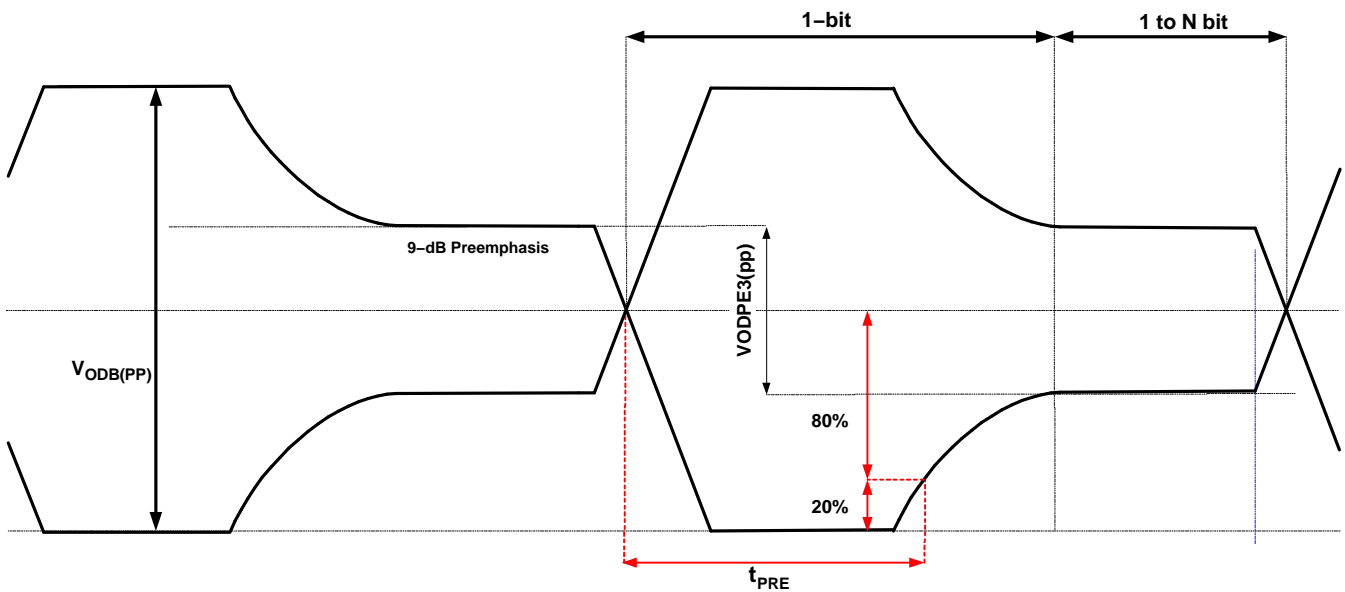
Equalization is secondary signal conditioning mechanism. The input stage provides 5-dB of fixed equalization gain from 375 MHz to 1.875 GHz (optimized for 3.75-Gbps 8B10B coded data).



**PARAMETER MEASUREMENT INFORMATION**



**Figure 1. Preemphasis and Output Voltage Waveforms and Definitions**



**Figure 2.  $t_{PRE}$  Preemphasis Duration Measurement**

PARAMETER MEASUREMENT INFORMATION (continued)

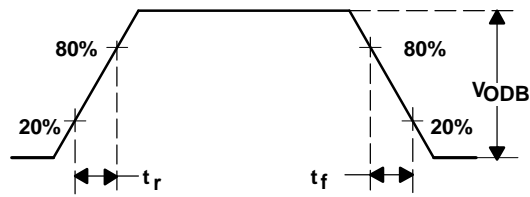


Figure 3. Driver Output Transition Time

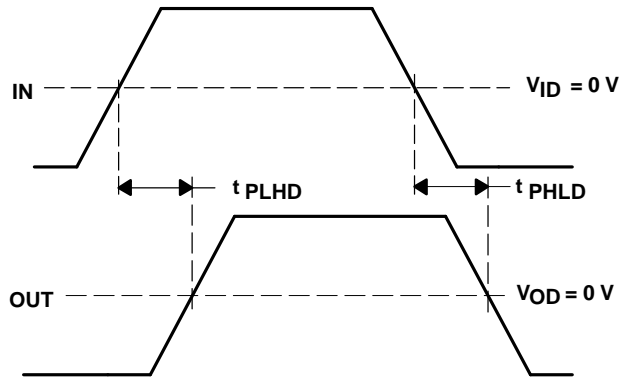


Figure 4. Propagation Delay Input to Output

CIRCUIT DIAGRAMS

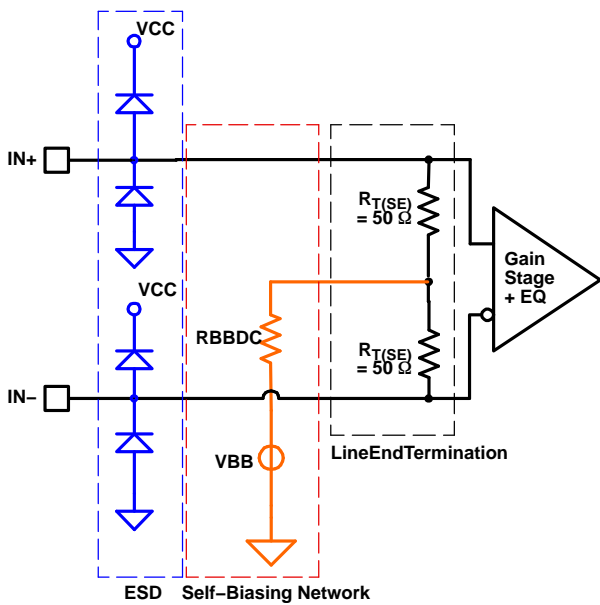


Figure 5. Equivalent Input Circuit Design

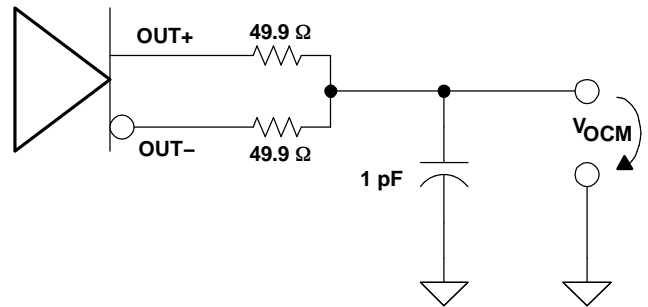
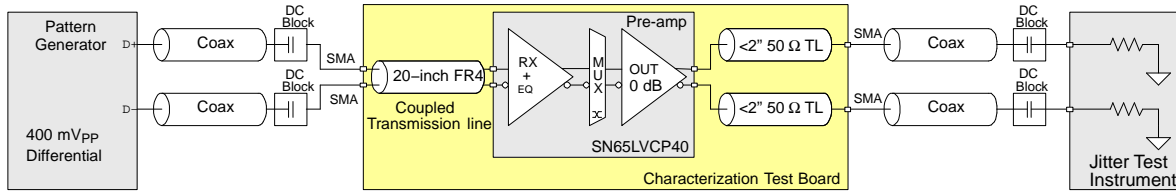


Figure 6. Common-Mode Output Voltage Test Circuit

## JITTER TEST CIRCUIT

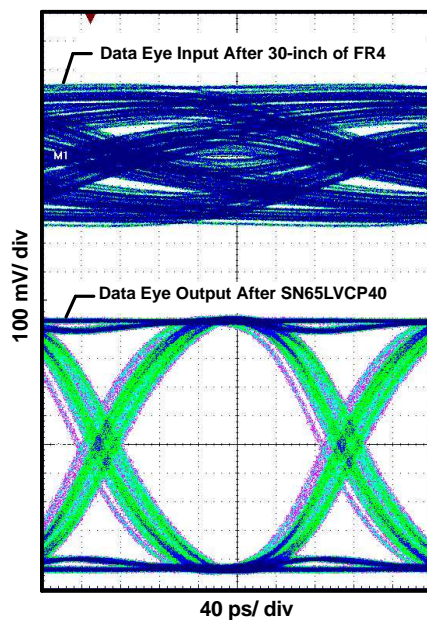


NOTE: For the Jitter Test, the preemphasis level of the output is set to 0 dB (PREx\_x=0)

**Figure 7. AC Test Circuit – Jitter and Output Rise Time Test Circuit**

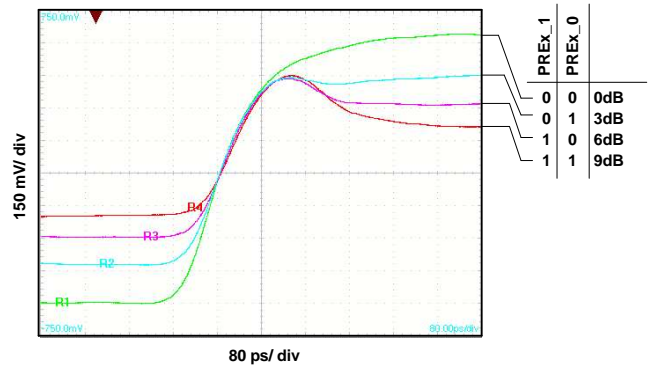
The SN65LVCP40 input equalizer provides 5-dB frequency gain to compensate for frequency loss of a shorter backplane transmission line. For characterization purposes, a 24-inch FR-4 coupled transmission line is used in place of the backplane trace. The 24-inch trace provides roughly 5 dB of attenuation between 375 MHz and 1.875 GHz, representing closely the characteristics of a short backplane trace. The loss tangent of the FR4 in the test board is 0.018 with an effective  $\epsilon(r)$  of 3.1.

## TYPICAL DEVICE BEHAVIOR



NOTE: 30 Inch Input Trace, dR = 4 Gbps;  $2^{7-1}$  PRBS

**Figure 8. Data Input and Output Pattern**



**Figure 9. Preemphasis Signal Shape**

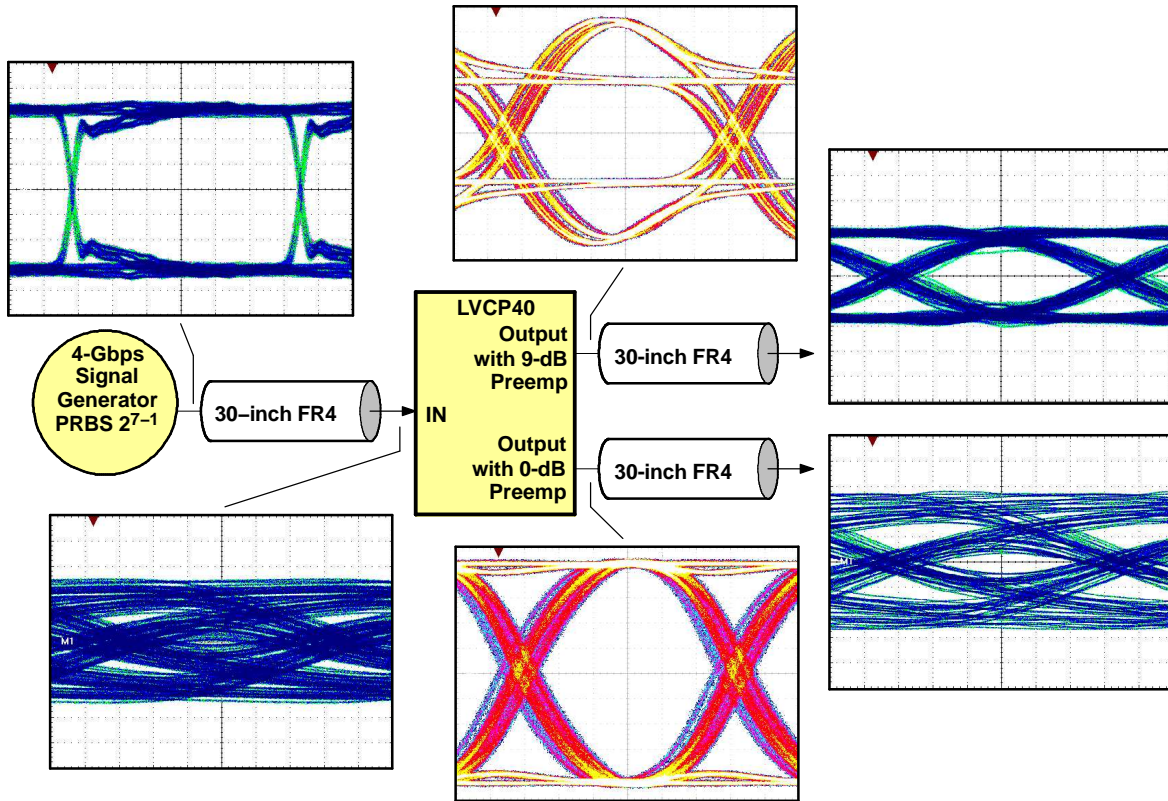


Figure 10. Data Output Pattern

TYPICAL CHARACTERISTICS

DETERMINISTIC OUTPUT JITTER  
VS  
DATA RATE

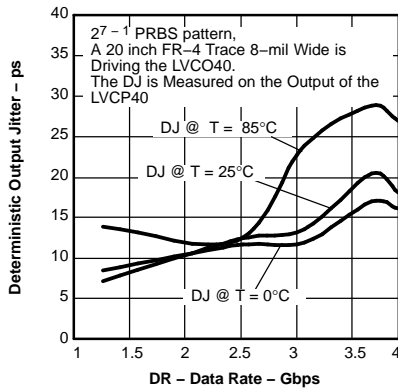


Figure 11.

DETERMINISTIC OUTPUT JITTER  
VS  
DIFFERENTIAL INPUT AMPLITUDE

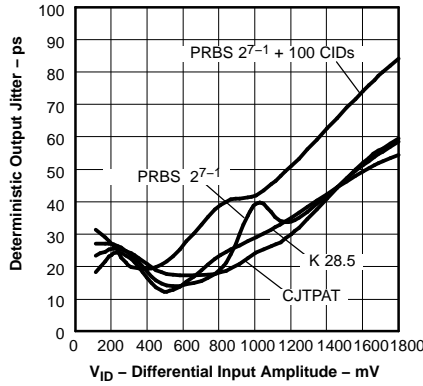


Figure 12.

DETERMINISTIC OUTPUT JITTER  
VS  
DIFFERENTIAL INPUT AMPLITUDE

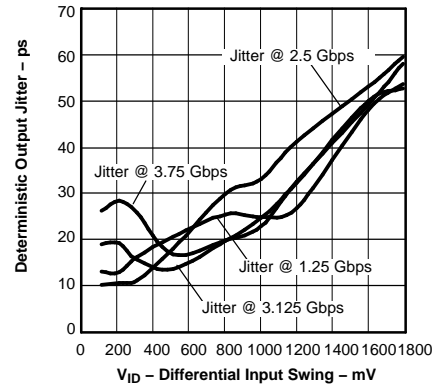


Figure 13.

DETERMINISTIC OUTPUT JITTER  
VS  
INPUT TRACE LENGTH

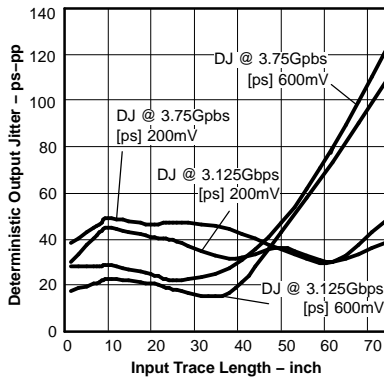


Figure 14.

RANDOM OUTPUT JITTER  
VS  
DATA RATE

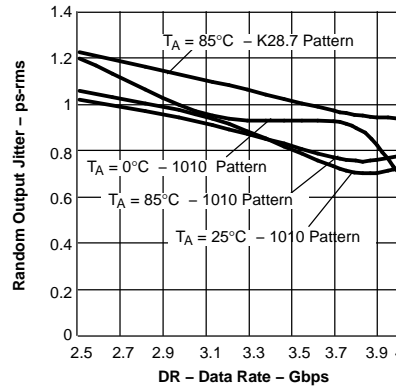


Figure 15.

RANDOM OUTPUT JITTER  
VS  
DIFFERENTIAL INPUT SWING

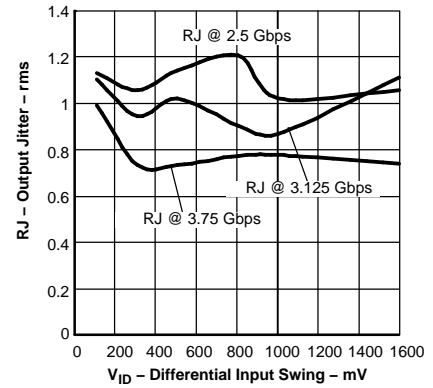


Figure 16.

RANDOM OUTPUT JITTER  
VS  
INPUT TRACE LENGTH

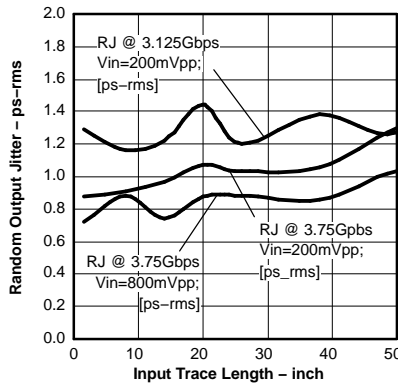


Figure 17.

TOTAL OUTPUT JITTER  
VS  
POWER SUPPLY NOISE

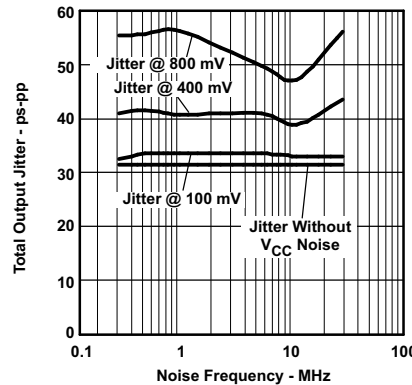


Figure 18.

DJ/RJ OUTPUT JITTER  
VS  
COMMON-MODE INPUT VOLTAGE

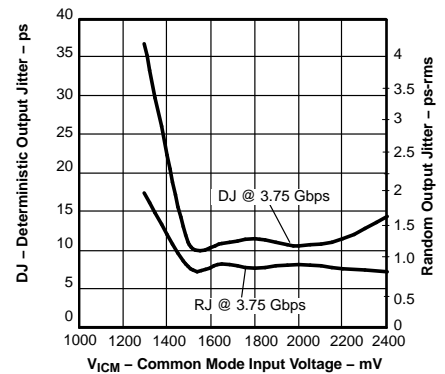


Figure 19.

TYPICAL CHARACTERISTICS (continued)

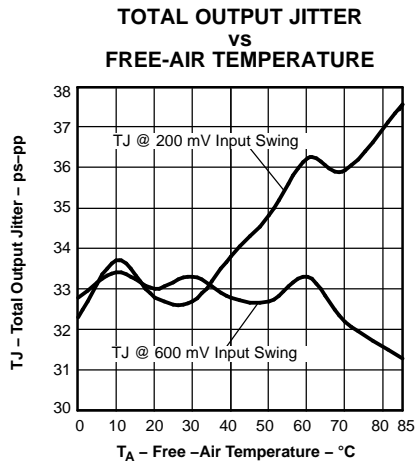


Figure 20.

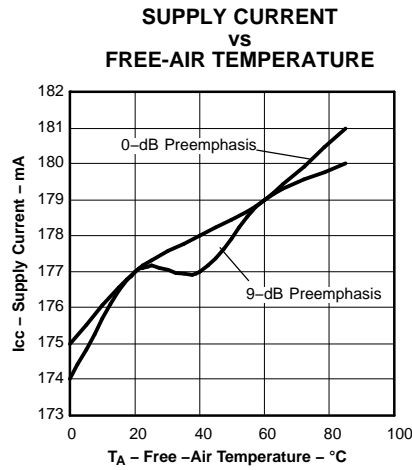


Figure 21.

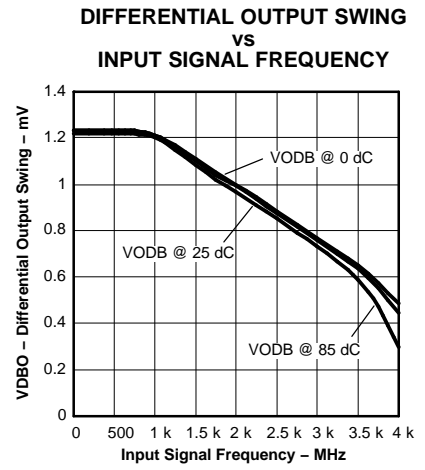


Figure 22.

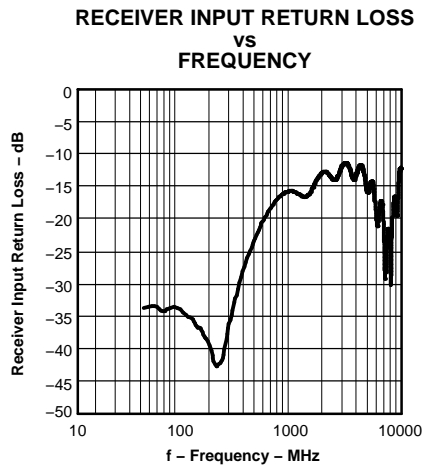


Figure 23.

## APPLICATION INFORMATION

### BANDWIDTH REQUIREMENTS

Error free transmission of data over a transmission line has specific bandwidth demands. It is helpful to analyze the frequency spectrum of the transmit data first. For an 8B10B coded data stream at 3.75 Gbps of random data, the highest bit transition density occurs with a 1010 pattern (1.875 GHz). The least transition density in 8B10B allows for five consecutive ones or zeros. Hence, the lowest frequency of interest is  $1.875 \text{ GHz}/5 = 375 \text{ MHz}$ . Real data signals consist of higher frequency components than sine waves due to the fast rise time. The faster the rise time, the more bandwidth becomes required. For 80-ps rise time, the highest important frequency component is at least  $0.6/(\pi \times 80 \text{ ps}) = 2.4 \text{ GHz}$ . Figure 24 shows the Fourier transformation of the 375-MHz and 1.875-GHz trapezoidal signal.

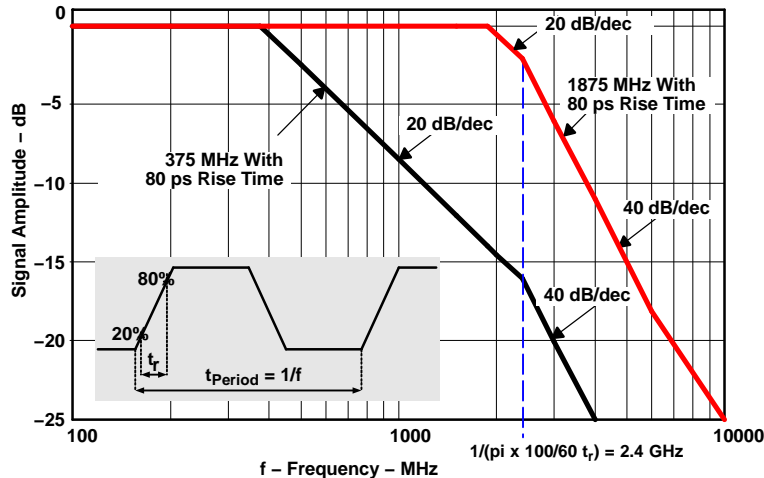


Figure 24. Approximate Frequency Spectrum of the Transmit Output Signal With 80 ps Rise Time

The spectrum analysis of the data signal suggests building a backplane with little frequency attenuation up to 2 GHz. Practically, this is achievable only with expensive, specialized PCB material. To support material like FR4, a compensation technique is necessary to compensate for backplane imperfections.

### EXPLANATION OF EQUALIZATION

Backplane designs differ widely in size, layer stack-up, and connector placement. In addition, the performance is impacted by trace architecture (trace width, coupling method) and isolation from adjacent signals. Common to most commercial backplanes is the use of FR4 as board material and its related high-frequency signal attenuation. Within a backplane, the shortest to longest trace lengths differ substantially – often ranging from 8 inches up to 40 inches. Increased loss is associated with longer signal traces. In addition, the backplane connector often contributes a good amount of signal attenuation. As a result, the frequency signal attenuation for a 300-MHz signal might range from 1 dB to 4 dB while the corresponding attenuation for a 2-GHz signal might span 6 dB to 24 dB. This frequency dependent loss causes distortion jitter on the transmitted signal. Each LVCP40 receiver input incorporates an equalizer and compensates for such frequency loss. The SN65LVCP40 equalizer provides 5 dB of frequency gain between 375 MHz and 1.875 GHz, compensating roughly for 20 inches of FR4 material with 8-mil trace width. Distortion jitter improvement is substantial, often providing more than 30-ps jitter reduction. The 5-dB compensation is sufficient for most short backplane traces. For longer trace lengths, it is recommended to enable transmit preemphasis in addition.

### SETTING THE PREEMPHASIS LEVEL

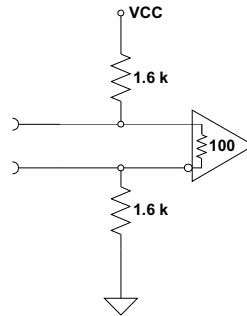
The receive equalization compensates for ISI. This reduces jitter and opens the data eye. In order to find the best preemphasis setting for each link, calibration of every link is recommended. Assuming each link consists of a transmitter (with adjustable pre-emphasis such as LVCP40) and the LVCP40 receiver, the following steps are necessary:

1. Set the transmitter and receiver to 0-dB preemphasis; record the data eye on the LVCP40 receiver output.
2. Increase the transmitter preemphasis until the data eye on the LVCP40 receiver output looks the cleanest.

## APPLICATION INFORMATION (continued)

### RECEIVER FAIL-SAFE RESPONSE

If the input is removed from a powered receiver of the 'LVCP40, there are no internal fail-safe provisions to prevent noise from switching the output. [Figure 25](#) shows one remedy using 1.6 k $\Omega$  resistors to pull up on one input to the SN65LVCP40 supply, and pull down the other input to its ground. Assuming the differential noise in the system is less than 25 mV, this maintains a valid output with no input. If the noise is greater than 25 mV, lower fail-safe resistance is required.



**Figure 25. Fail-Safe Bias Resistors**

If the driver is another SN65LVCP40, attenuation from the driver to receiver must be less than 250 mV or 6 dB. This value comes from the minimum output of 500 mV into 100  $\Omega$  less the minimum recommended input voltage of 100 mV, 25 mV for noise, and 125 mV for the maximum fail-safe bias.

The fail-safe bias also introduces additional *eye-pattern* jitter depending upon the input voltage transition time, but is designed to be less than 10% of the unit interval.

The only other options are to have a hardware interlock that removed power to the receiver, or switched in a fail-safe bias, or rely on error detection to ignore random inputs.



## GENERIC PACKAGE VIEW

**RGZ 48**

**VQFN - 1 mm max height**

7 x 7, 0.5 mm pitch

PLASTIC QUADFLAT PACK- NO LEAD



Images above are just a representation of the package family, actual package may vary.  
Refer to the product data sheet for package details.

4224671/A

## IMPORTANT NOTICE AND DISCLAIMER

TI PROVIDES TECHNICAL AND RELIABILITY DATA (INCLUDING DATA SHEETS), DESIGN RESOURCES (INCLUDING REFERENCE DESIGNS), APPLICATION OR OTHER DESIGN ADVICE, WEB TOOLS, SAFETY INFORMATION, AND OTHER RESOURCES "AS IS" AND WITH ALL FAULTS, AND DISCLAIMS ALL WARRANTIES, EXPRESS AND IMPLIED, INCLUDING WITHOUT LIMITATION ANY IMPLIED WARRANTIES OF MERCHANTABILITY, FITNESS FOR A PARTICULAR PURPOSE OR NON-INFRINGEMENT OF THIRD PARTY INTELLECTUAL PROPERTY RIGHTS.

These resources are intended for skilled developers designing with TI products. You are solely responsible for (1) selecting the appropriate TI products for your application, (2) designing, validating and testing your application, and (3) ensuring your application meets applicable standards, and any other safety, security, regulatory or other requirements.

These resources are subject to change without notice. TI grants you permission to use these resources only for development of an application that uses the TI products described in the resource. Other reproduction and display of these resources is prohibited. No license is granted to any other TI intellectual property right or to any third party intellectual property right. TI disclaims responsibility for, and you will fully indemnify TI and its representatives against, any claims, damages, costs, losses, and liabilities arising out of your use of these resources.

TI's products are provided subject to [TI's Terms of Sale](#) or other applicable terms available either on [ti.com](https://www.ti.com) or provided in conjunction with such TI products. TI's provision of these resources does not expand or otherwise alter TI's applicable warranties or warranty disclaimers for TI products.

TI objects to and rejects any additional or different terms you may have proposed.

Mailing Address: Texas Instruments, Post Office Box 655303, Dallas, Texas 75265  
Copyright © 2024, Texas Instruments Incorporated