

DS16EV51-AEVKC HDMI-RJ45 Extender Demo Kit for CAT5 Cables

General Description

The DS16EV51-AEVKC CAT5 Cable Extender Demo Kit provides a complete HDMI system extension solution with cost effective CAT5 cables, using National's DS16EV5110A - a Video Equalizer.

The kit consists of a driver adapter board and a receiver equalizer board. The driver board has one HDMI female receptacle connector and two RJ45 jacks. It is a passive board without power supply. It serves as an adapter between HDMI and CAT5 interfaces. The receiver equalizer board has two RJ45 jacks and one HDMI female receptacle connector with other components, including a DS16EV5110A device.

All the TMDS signals are connected through first RJ45 jack between two boards. The DDC signals, Hot Plug, 5V Power and 5V Ground are directly connected between the HDMI connectors to the second RJ45 jack on both boards, making this demo kit HDCP compliant.

A 3.3V VCC 1-pin header (J4) and a GND 1-pin header (J5) are used for the power supply for the receiver equalizer board.

Alternately, an AC/DC power adapter (>300mA) can be used for the receiver equalizer board to provide 5V DC voltage for easy portability. A 1.8mm DC Power Jack is used to connect the AC/DC Power Adapter. National's LP3964, a 3.3V, 800mA, Fast, Ultra Low Dropout Linear Regulator, converts the 5V power supply voltage to a 3.3V power supply voltage that powers the DS16EV5110A and other active components on the receiver board.

Features

- **Compatible with DTV Resolutions 480i, 480p, 720i, 720p, 1080i, 1080p, and 1080p with 12 bit deep color depth.**
- **Compatible with Computer Resolutions of VGA, SVGA, XGA, SXGA, UXGA**
- **Supports TMDS HDMI or DVI Single Link**
- **Adjustable rotary switch for easy custom EQ boost level setting to reach maximum length of TMDS Interface with Twisted Pair , HDMI, or DVI Cables**
- **Single 3.3V Supply**
- **Ultra Portable with AC/DC Power Adapter (not included in the kit)**
- **500 mW Typical Power Consumption**
- **>6kV ESD Rating**
- **-40 to 85C Industrial Temperature Range**
- **The DS16EV51-AEVKC demo kit extends TMDS with the UTP (Unshielded Twist Pairs) CAT5 or CAT6 cable as follows:**

	Resolution	Pixel bandwidth (MPixel/s) 60Hz LCD with 20% blanking	Per channel bandwidth (Gb/s) 60Hz LCD with 20% blanking	UTP CAT5/6 Length
SDTV (480p)	704 x 480	25	0.25	> 80 m
HDTV (720p)	1280 x 720	66.4	0.664	> 55 m
HDTV (1080i)	1920 x1080	75	0.75	> 50 m
HDTV (1080p)	1920 x1080	150	1.5	> 25 m
HDTV (1080p) 12 bit Deep Color Depth	1920 x1080	225	2.25	> 20 m

Applications

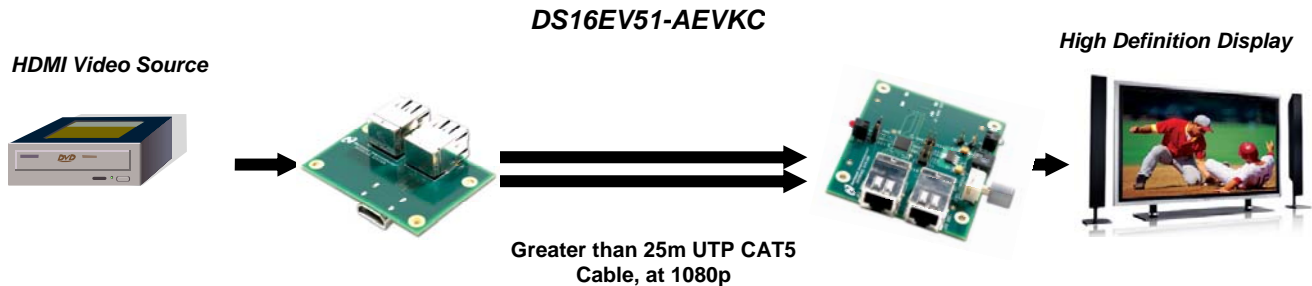
High Definition Displays and Televisions
High Definition Front- Projectors
LCD Computer Monitors
Cable Extender

Ordering Information

PART: DS16EV5110ASQ

Demo Board for CAT5 Cables: DS16EV51-AEVKC

Typical Applications



Bill of Materials

Passive Driver Board

DESIGNATION	QTY	DESCRIPTION
JR1, JR2	2	RJ45 Jack
J1	1	HDMI Receptacle Female

Equalizer Receiver Board

DESIGNATION	QTY	DESCRIPTION
C2, C4, C8, C10	4	0.01uF ±10% Ceramic Capacitor 0402
C1, C3, C7, C9, C11	5	0.1uF ±10% Ceramic Capacitor 0402
C5	1	33uF ±10% Tantalum Capacitor 3528
C6	1	68uF ±10% Tantalum Capacitor 3528
D1	1	LED Green
D2	1	LED Red
JR1, JR2	2	RJ45 Jack
R1, R2	2	453 ohm ±5% Resistor 0402
R7	1	10K ohm ±5% Resistor 0402
J2	1	HDMI Receptacle Female
J3	1	DC Power Jack 1.8 mm
J4, J5	2	1 pin header (J4: VDD=3.3V, J5:GND)
J7, J8, J10, J11	4	1X2 pin header
J9	1	1X4 pin header
U1	1	National DS16EV5110A
U2	1	National LP3965 – 3.3V -1500mA
U3	1	94HBB08RAT Rotary Dip Switch

Quick Start Guide:

1. Attach HDMI cable from the source to the drive board.
2. Attach HDMI cable from the sink to the receiver board.
3. Connect 3.3V DC power to J4 and ground to J5 from the power supply on the receiver board.
Or, plug the AC/DC power adapter to the DC power Jack
AC/DC power adapter requirement: Output DC 4V~6V, Output current > 800mA
4. Attach two CAT5 cables between the driver board and the receiver board with JR1 to JR1, and JR2 to JR2.
5. Turn on the source (DVD/Computer) and the sink (Monitor/HDTV).

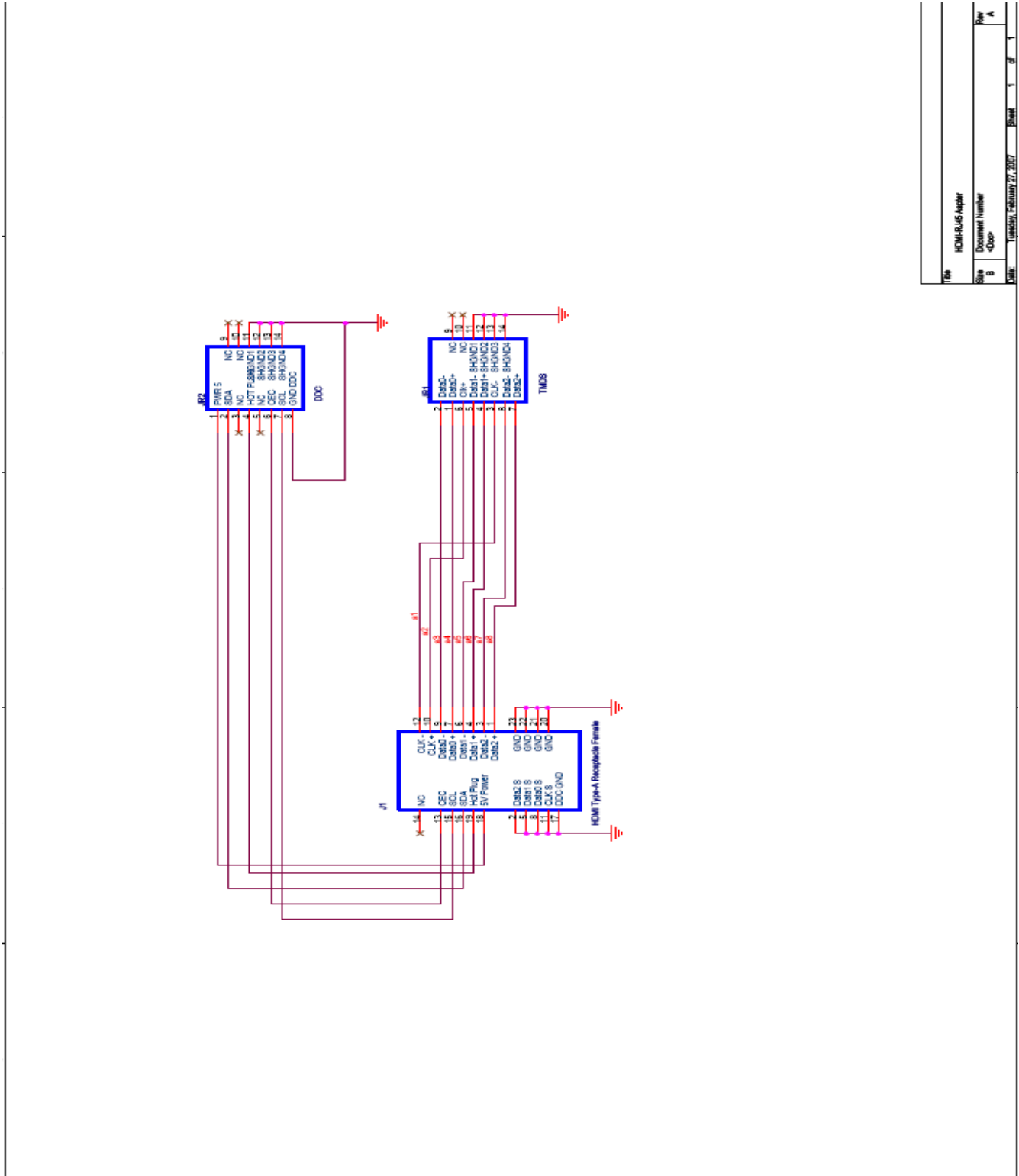
Adjustment and Control Description on Receiver Board

Component	Name	Function
D1	PWR	The LED turns on when 5V DC applies
D2	SD	The LED turns on when the DS16EV5110A does not detect input signal
J3	5V DC	Optional DC Power Jack for 1.5 mm Adaptor Plug
J4	3.3V	3.3V VCC power supply
J5	GND	GND
J7	FEB	Optional SMBus Control. See Datasheet.
J8	CS	Optional SMBus Control. See Datasheet
J10, J11	SDA, SDC	Optional SMBus access. See Datasheet
J9	Loop Back Control	Connect "LED" and "SD" to enable D2 function. Connect "SD" and "EN" to enable look back control function. When the clock signal is not detected, the DS16EV5110A sets to power down mode.
U3	Rotary Switch	Turn the switch to control the EQ boost setting. "0" on the switch refers to the boost setting of "0X00", "7" on the switch refers to the boost setting of "0X07". See datasheet for detail Boost setting information.

Board Design Consideration

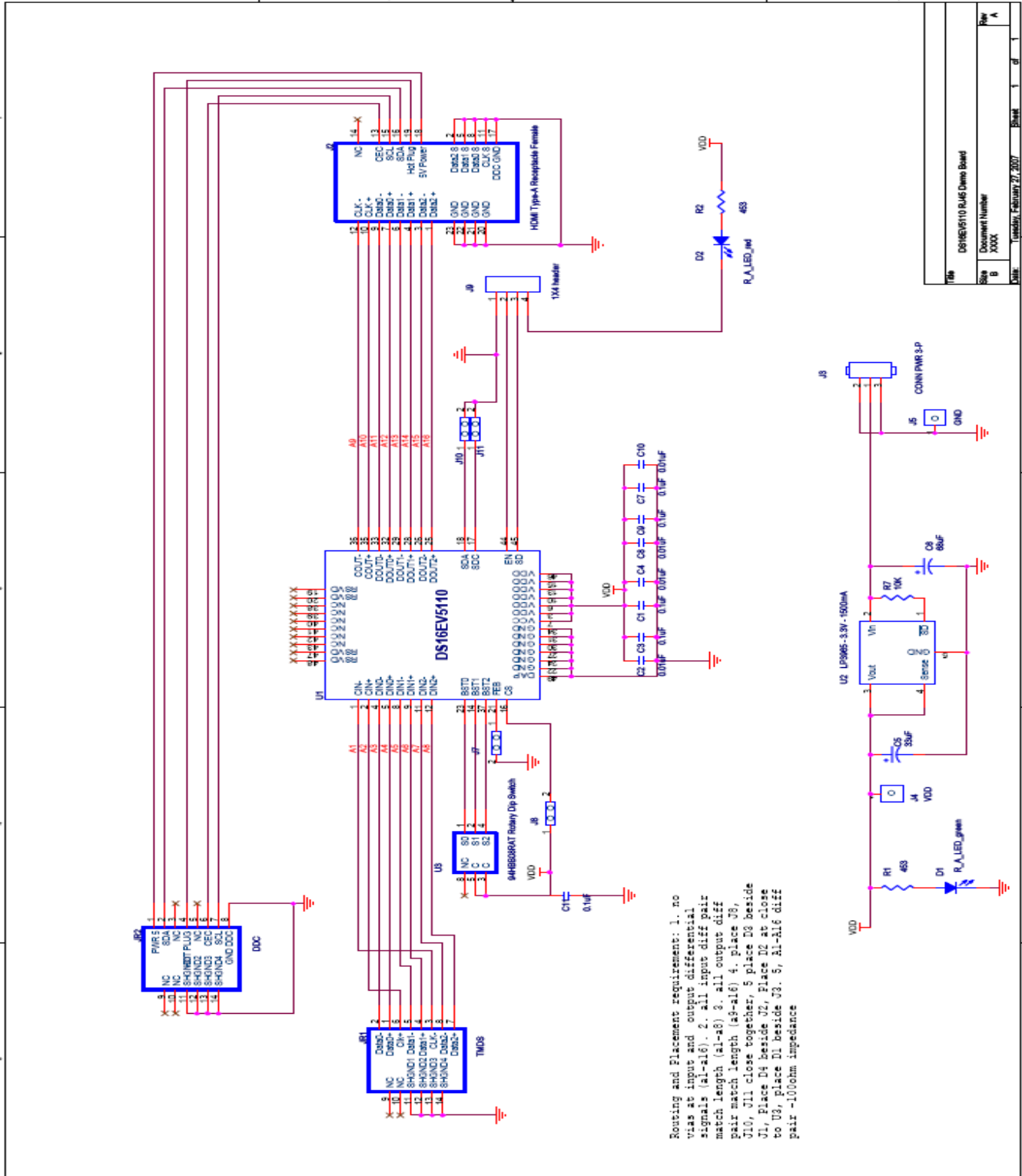
- Using One RJ45 Jack for all TMDS signals in order to minimize the inter pair skew.
- Using another RJ45 Jack for all rest of control pins, plus at least one ground connection between two boards to set the common ground.
- Use pin 3 and pin 6 on the RJ45 Jack for the TMDS clock path.

Schematics (Driver Adapter Board)



Title	HDMI-DVI Adapter
Size	Document Number
Rev	4000
Rev	A
Date	Tuesday, February 27, 2007
Sheet	1 of 1

Schematics (Receiver Equalizer Board)

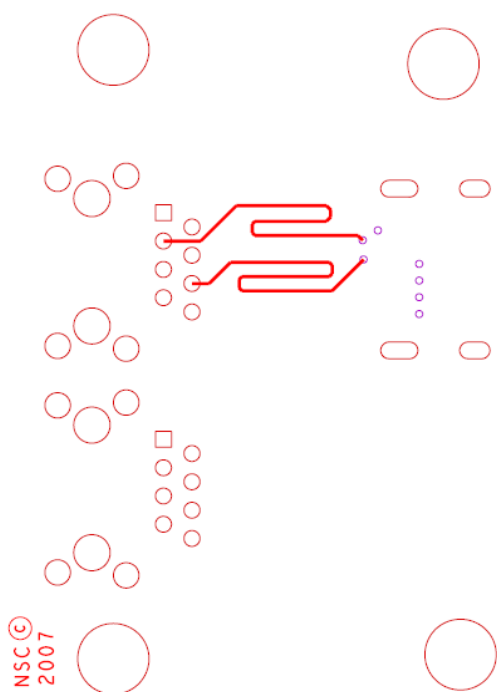


File	DS16EV510 Rev A Demo Board
Sheet	1 of 1
Document Number	XXXX
Date	Monday, February 27, 2007

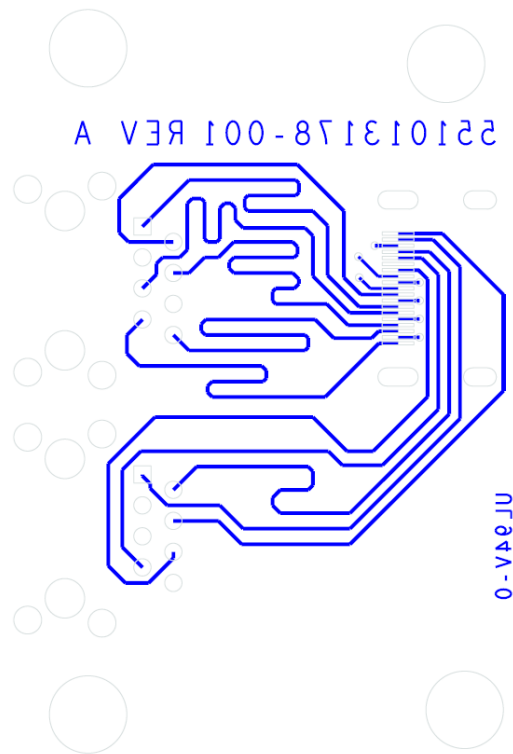
Layout Considerations

- Keep the clock and data transmission lines as short as possible with controlled 50 ohm single-ended impedance with matched lengths for any TMDS signals connected to RJ45 Jack.
- Use differentially coupled traces with 100 ohm impedance for DS16EV5110A TMDS outputs.
- Avoid using vias on the data transmission lines on the input side of the DS16EV5110A.
- Place power supply decoupling capacitors close to the VCC pins.

Layout (Driver Adapter Board)

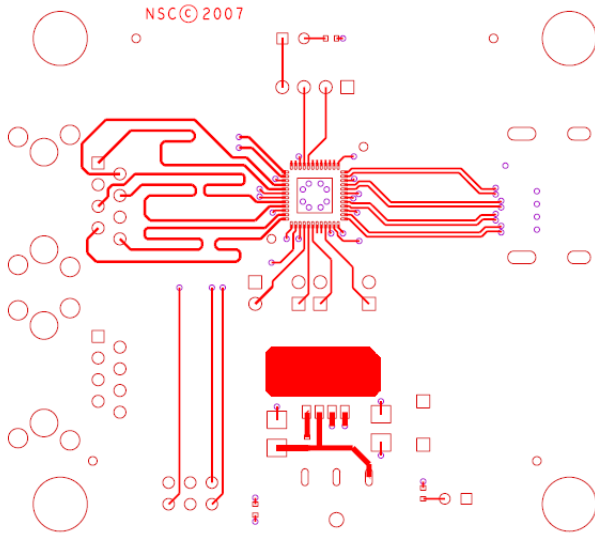


Top View

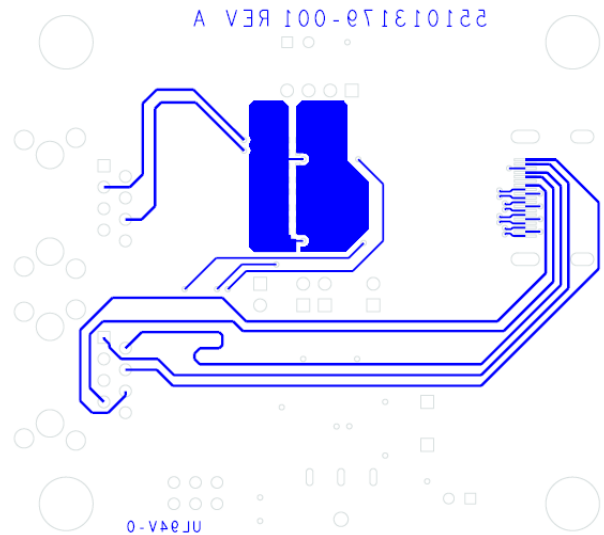


Bottom View

Layout (Receiver Equalizer Board)



Top View



Bottom View

IMPORTANT NOTICE

Texas Instruments Incorporated and its subsidiaries (TI) reserve the right to make corrections, modifications, enhancements, improvements, and other changes to its products and services at any time and to discontinue any product or service without notice. Customers should obtain the latest relevant information before placing orders and should verify that such information is current and complete. All products are sold subject to TI's terms and conditions of sale supplied at the time of order acknowledgment.

TI warrants performance of its hardware products to the specifications applicable at the time of sale in accordance with TI's standard warranty. Testing and other quality control techniques are used to the extent TI deems necessary to support this warranty. Except where mandated by government requirements, testing of all parameters of each product is not necessarily performed.

TI assumes no liability for applications assistance or customer product design. Customers are responsible for their products and applications using TI components. To minimize the risks associated with customer products and applications, customers should provide adequate design and operating safeguards.

TI does not warrant or represent that any license, either express or implied, is granted under any TI patent right, copyright, mask work right, or other TI intellectual property right relating to any combination, machine, or process in which TI products or services are used. Information published by TI regarding third-party products or services does not constitute a license from TI to use such products or services or a warranty or endorsement thereof. Use of such information may require a license from a third party under the patents or other intellectual property of the third party, or a license from TI under the patents or other intellectual property of TI.

Reproduction of TI information in TI data books or data sheets is permissible only if reproduction is without alteration and is accompanied by all associated warranties, conditions, limitations, and notices. Reproduction of this information with alteration is an unfair and deceptive business practice. TI is not responsible or liable for such altered documentation. Information of third parties may be subject to additional restrictions.

Resale of TI products or services with statements different from or beyond the parameters stated by TI for that product or service voids all express and any implied warranties for the associated TI product or service and is an unfair and deceptive business practice. TI is not responsible or liable for any such statements.

TI products are not authorized for use in safety-critical applications (such as life support) where a failure of the TI product would reasonably be expected to cause severe personal injury or death, unless officers of the parties have executed an agreement specifically governing such use. Buyers represent that they have all necessary expertise in the safety and regulatory ramifications of their applications, and acknowledge and agree that they are solely responsible for all legal, regulatory and safety-related requirements concerning their products and any use of TI products in such safety-critical applications, notwithstanding any applications-related information or support that may be provided by TI. Further, Buyers must fully indemnify TI and its representatives against any damages arising out of the use of TI products in such safety-critical applications.

TI products are neither designed nor intended for use in military/aerospace applications or environments unless the TI products are specifically designated by TI as military-grade or "enhanced plastic." Only products designated by TI as military-grade meet military specifications. Buyers acknowledge and agree that any such use of TI products which TI has not designated as military-grade is solely at the Buyer's risk, and that they are solely responsible for compliance with all legal and regulatory requirements in connection with such use.

TI products are neither designed nor intended for use in automotive applications or environments unless the specific TI products are designated by TI as compliant with ISO/TS 16949 requirements. Buyers acknowledge and agree that, if they use any non-designated products in automotive applications, TI will not be responsible for any failure to meet such requirements.

Following are URLs where you can obtain information on other Texas Instruments products and application solutions:

Products

Audio	www.ti.com/audio
Amplifiers	amplifier.ti.com
Data Converters	dataconverter.ti.com
DLP® Products	www.dlp.com
DSP	dsp.ti.com
Clocks and Timers	www.ti.com/clocks
Interface	interface.ti.com
Logic	logic.ti.com
Power Mgmt	power.ti.com
Microcontrollers	microcontroller.ti.com
RFID	www.ti-rfid.com
OMAP Mobile Processors	www.ti.com/omap
Wireless Connectivity	www.ti.com/wirelessconnectivity

Applications

Automotive and Transportation	www.ti.com/automotive
Communications and Telecom	www.ti.com/communications
Computers and Peripherals	www.ti.com/computers
Consumer Electronics	www.ti.com/consumer-apps
Energy and Lighting	www.ti.com/energy
Industrial	www.ti.com/industrial
Medical	www.ti.com/medical
Security	www.ti.com/security
Space, Avionics and Defense	www.ti.com/space-avionics-defense
Video and Imaging	www.ti.com/video

TI E2E Community Home Page

e2e.ti.com

Mailing Address: Texas Instruments, Post Office Box 655303, Dallas, Texas 75265
Copyright © 2012, Texas Instruments Incorporated