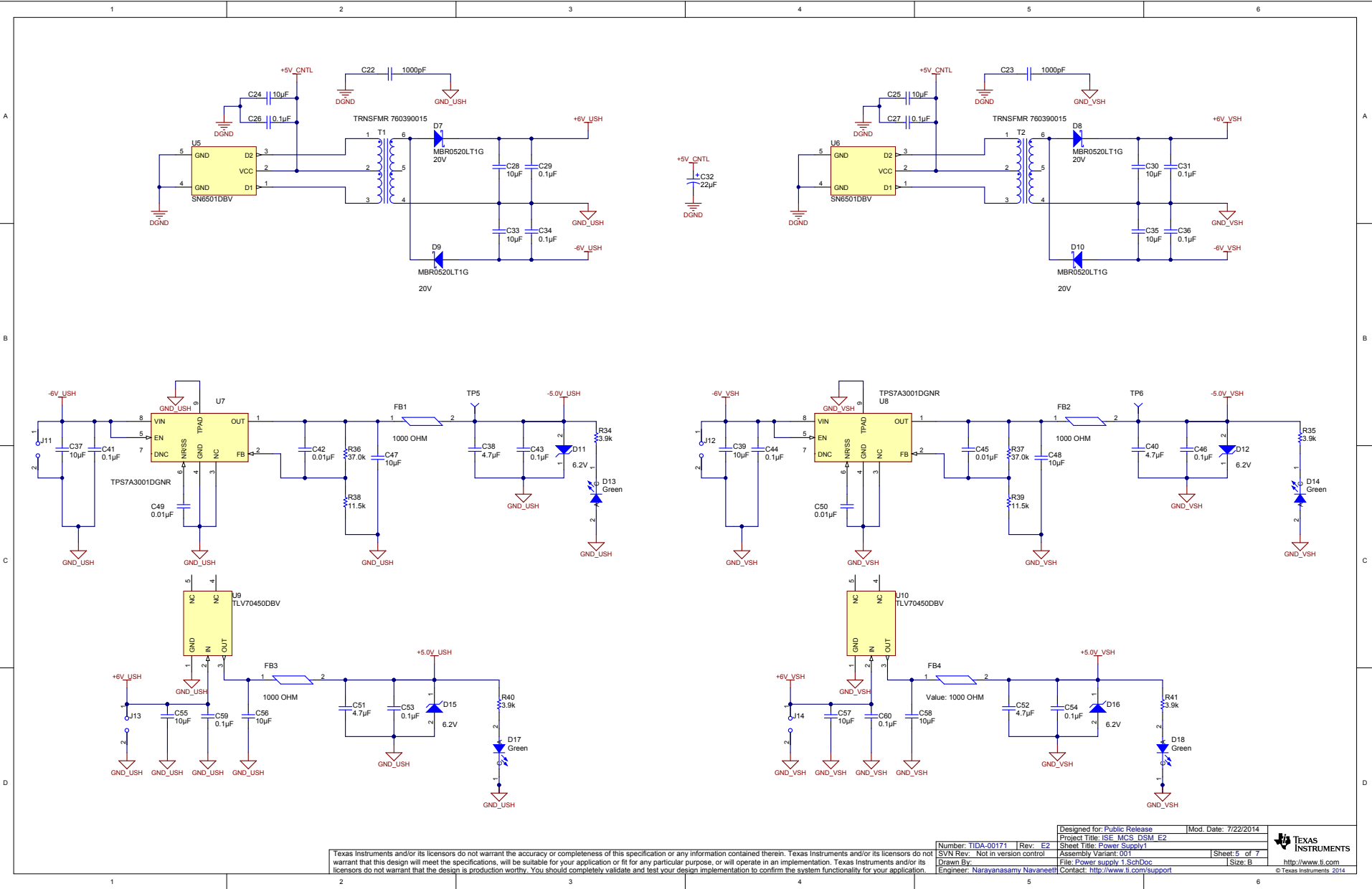
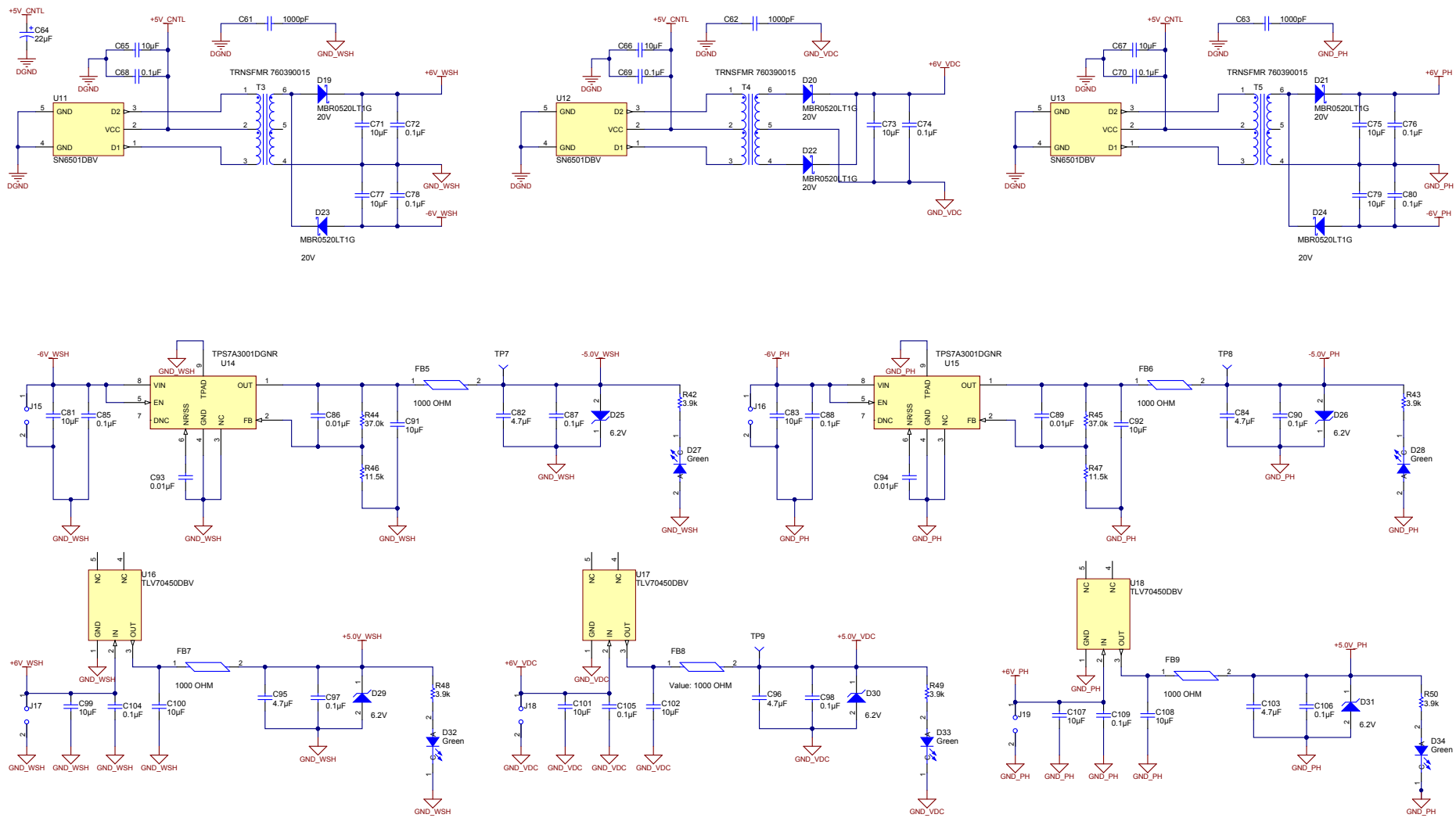


Dashed line represent alternate connection options









PCB Number: TIDA-00171  
PCB Rev: E2

PCB  
LOGO

Label Table	
Variant	Label Text
001	ChangeMe!
002	ChangeMe!


PCB Label

ZZ1  
Label Assembly Note

ZZ2  
Assembly Note

ZZ3  
Assembly NoteZZ4  
Assembly Note

Texas Instruments and/or its licensors do not warrant the accuracy or completeness of this specification or any information contained therein. Texas Instruments and/or its licensors do not warrant that this design will meet the specifications, will be suitable for your application or fit for any particular purpose, or will operate in an implementation. Texas Instruments and/or its licensors do not warrant that the design is production worthy. You should completely validate and test your design implementation to confirm the system functionality for your application.

Designed for: <a href="#">Public Release</a>		Mod. Date: 7/22/2014	
Project Title: <a href="#">ISE MCS DSM E2</a>		 <b>TEXAS INSTRUMENTS</b>	
Sheet Title: <a href="#">Hardware - Miscellaneous</a>			
Assembly Variant: 001			
SVN Rev: Not in version control		Sheet: 7 of 7	
Drawn By: <a href="#">File: Hardware.SchDoc</a>		Size: B	<a href="http://www.ti.com">http://www.ti.com</a>
Engineer: <a href="#">Narayanasamy Navaneeth</a>		Contact: <a href="http://www.ti.com/support">http://www.ti.com/support</a>	© Texas Instruments 2014