

SN74AXCH8T245 8-Bit Dual-Supply Bus Transceiver with Configurable Voltage Translation, Tri-State Outputs, and Bus-Hold Circuitry

1 Features

- Qualified Fully Configurable Dual-Rail Design Allows Each Port to Operate With a Power Supply Range From 0.65 V to 3.6 V
- Operating Temperature From -40°C to $+125^{\circ}\text{C}$
- Bus-hold on Data Inputs Eliminates the Need for External Pullup or Pulldown Resistors
- Multiple Direction Control Pins to Allow Simultaneous Up and Down Translation
- Up to 380 Mbps support when translating from 1.8 V to 3.3 V
- V_{CC} Isolation Feature to Effectively Isolate Both Buses in a Power-Down Scenario
- Partial Power-Down Mode to Limit Backflow Current in a Power-Down Scenario
- Compatible With SN74AVCH8T245 and 74AVCH8T245 Level Shifters
- Latch-Up Performance Exceeds 100 mA Per JESD 78, Class II
- ESD Protection Exceeds JESD 22
 - 8000-V Human-Body Model
 - 1000-V Charged-Device Model

2 Applications

- Enterprise and Communications
- Wireless Infrastructure
- Building Automation
- Data Center Switches
- Enterprise-Solid State Drive
- Rack Server
- EPOS

3 Description

The SN74AXCH8T245 device is an 8-bit non-inverting bus transceiver that resolves voltage level mismatch between devices operating at the latest voltage nodes (0.7 V, 0.8 V, and 0.9 V) and devices operating at industry standard voltage nodes (1.8 V, 2.5 V, 3.3 V) and vice versa.

The device operates by using two independent power-supply rails (V_{CCA} and V_{CCB}). Data pins A1 through A8 are designed to track V_{CCA} , which accepts any supply voltage from 0.65 V to 3.6 V. Data pins B1 through B8 are designed to track V_{CCB} , which accepts any supply voltage from 0.65 V to 3.6 V. Additionally the SN74AXCH8T245 is compatible with a single-supply system.

The SN74AXCH8T245 device is designed for asynchronous communication between data buses. The device transmits data from the A bus to the B bus or from the B bus to the A bus, depending on the logic level of the direction-control inputs (DIR1 and DIR2). The output-enable (\overline{OE}) input is used to disable the outputs so the buses are effectively isolated.

The SN74AXCH8T245 device is designed so the control pins (DIR and \overline{OE}) are referenced to V_{CCA} .

Active bus-hold circuitry holds unused or undriven inputs at a valid logic state. Use of pull-up or pull-down resistors with the bus-hold circuitry is not recommended. If a supply is present for V_{CCA} or V_{CCB} , the bus-hold circuitry always remains active on all A and B ports respectively, independent of the direction control or output enable.

This device is fully specified for partial-power-down applications using I_{off} . The I_{off} circuitry disables the outputs when the device is powered down. This inhibits current backflow into the device which prevents damage to the device.

The V_{CC} isolation feature ensures that if either V_{CC} input supply is below 100 mV, all level shifter outputs are disabled and placed into a high-impedance state. To ensure the high-impedance state of the level shifter I/Os during power up or power down, \overline{OE} should be tied to V_{CCA} through a pull-up resistor; the minimum value of the resistor is determined by the current-sinking capability of the driver.

Device Information⁽¹⁾

PART NUMBER	PACKAGE	BODY SIZE (NOM)
SN74AXCH8T245PW	TSSOP (24)	7.80 mm x 4.40 mm
SN74AXCH8T245RHL	VQFN (24)	5.50 mm x 3.50 mm

(1) For all available packages, see the orderable addendum at the end of the data sheet.

Typical Application Schematic

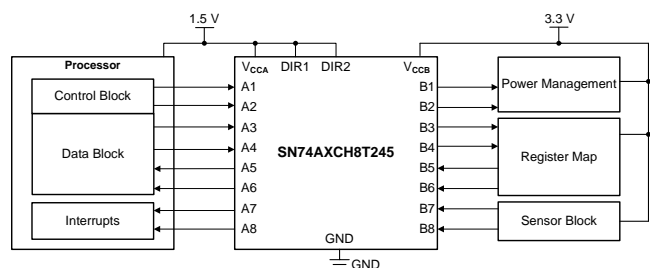


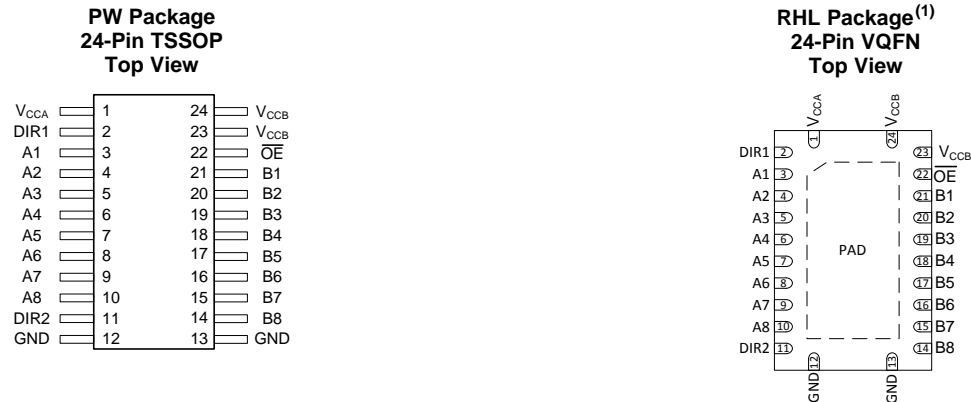
Table of Contents

1	Features	1	8	Detailed Description	20
2	Applications	1	8.1	Overview	20
3	Description	1	8.2	Functional Block Diagram	20
4	Revision History	2	8.3	Feature Description	21
5	Pin Configuration and Functions	3	8.4	Device Functional Modes	21
6	Specifications	4	9	Application and Implementation	22
6.1	Absolute Maximum Ratings	4	9.1	Application Information	22
6.2	ESD Ratings	4	9.2	Typical Application	22
6.3	Recommended Operating Conditions	5	10	Power Supply Recommendations	24
6.4	Thermal Information	5	11	Layout	24
6.5	Electrical Characteristics	6	11.1	Layout Guidelines	24
6.6	Switching Characteristics, $V_{CCA} = 0.7\text{ V}$	8	11.2	Layout Example	24
6.7	Switching Characteristics, $V_{CCA} = 0.8\text{ V}$	9	12	Device and Documentation Support	25
6.8	Switching Characteristics, $V_{CCA} = 0.9\text{ V}$	10	12.1	Documentation Support	25
6.9	Switching Characteristics, $V_{CCA} = 1.2\text{ V}$	11	12.2	Receiving Notification of Documentation Updates	25
6.10	Switching Characteristics, $V_{CCA} = 1.5\text{ V}$	12	12.3	Community Resources	25
6.11	Switching Characteristics, $V_{CCA} = 1.8\text{ V}$	13	12.4	Trademarks	25
6.12	Switching Characteristics, $V_{CCA} = 2.5\text{ V}$	14	12.5	Electrostatic Discharge Caution	25
6.13	Switching Characteristics, $V_{CCA} = 3.3\text{ V}$	15	12.6	Glossary	25
6.14	Operating Characteristics: $T_A = 25^\circ\text{C}$	16	13	Mechanical, Packaging, and Orderable Information	26
7	Parameter Measurement Information	18			

4 Revision History

Changes from Original (August 2018) to Revision A	Page
• Added RHL package to Device Information table	1
• Added RHL package pinout	3
• Added RHL package to Thermal Information table	5

5 Pin Configuration and Functions



(1) PAD - may be grounded (recommended) or left floating.

Pin Functions

PIN		I/O	DESCRIPTION
NAME	PW, RHL		
A1	3	I/O	Input/output A1. Referenced to V_{CCA} .
A2	4	I/O	Input/output A2. Referenced to V_{CCA} .
A3	5	I/O	Input/output A3. Referenced to V_{CCA} .
A4	6	I/O	Input/output A4. Referenced to V_{CCA} .
A5	7	I/O	Input/output A5. Referenced to V_{CCA} .
A6	8	I/O	Input/output A6. Referenced to V_{CCA} .
A7	9	I/O	Input/output A7. Referenced to V_{CCA} .
A8	10	I/O	Input/output A8. Referenced to V_{CCA} .
B1	21	I/O	Input/output B1. Referenced to V_{CCB} .
B2	20	I/O	Input/output B2. Referenced to V_{CCB} .
B3	19	I/O	Input/output B3. Referenced to V_{CCB} .
B4	18	I/O	Input/output B4. Referenced to V_{CCB} .
B5	17	I/O	Input/output B5. Referenced to V_{CCB} .
B6	16	I/O	Input/output B6. Referenced to V_{CCB} .
B7	15	I/O	Input/output B7. Referenced to V_{CCB} .
B8	14	I/O	Input/output B8. Referenced to V_{CCB} .
DIR1	2	I	Direction-control signal. Referenced to V_{CCA} .
DIR2	11	I	Direction-control signal. Referenced to V_{CCA} . See Multiple Direction Control Pins for additional details. Tie to GND to maintain backwards compatibility with the SN74AVCH8T245 device.
GND	12	—	Ground
	13	—	Ground
\overline{OE}	22	I	Output Enable. Pull to GND to enable all outputs. Pull to V_{CCA} to place all outputs in high-impedance mode. Referenced to V_{CCA} .
V_{CCA}	1	—	A-port supply voltage. $0.65\text{ V} \leq V_{CCA} \leq 3.6\text{ V}$
V_{CCB}	23	—	B-port supply voltage. $0.65\text{ V} \leq V_{CCB} \leq 3.6\text{ V}$
	24	—	B-port supply voltage. $0.65\text{ V} \leq V_{CCB} \leq 3.6\text{ V}$

6 Specifications

6.1 Absolute Maximum Ratings

 over operating free-air temperature range (unless otherwise noted)⁽¹⁾

		MIN	MAX	UNIT
Supply voltage, V_{CCA}		-0.5	4.2	V
Supply voltage, V_{CCB}		-0.5	4.2	V
Input voltage, V_I ⁽²⁾	I/O ports (A port)	-0.5	4.2	V
	I/O ports (B port)	-0.5	4.2	
	Control inputs	-0.5	4.2	
Voltage applied to any output in the high-impedance or power-off state, V_O ⁽²⁾	A port	-0.5	4.2	V
	B port	-0.5	4.2	
Voltage applied to any output in the high or low state, V_O ^{(2) (3)}	A port	-0.5	$V_{CCA} + 0.2$	V
	B port	-0.5	$V_{CCB} + 0.2$	
Input clamp current, I_{IK}	$V_I < 0$	-50		mA
Output clamp current, I_{OK}	$V_O < 0$	-50		mA
Continuous output current, I_O		-50	50	mA
Continuous current through V_{CCA} , V_{CCB} , or GND		-100	100	mA
Junction Temperature, T_J			150	°C
Storage temperature, T_{stg}		-65	150	°C

- (1) Stresses beyond those listed under *Absolute Maximum Ratings* may cause permanent damage to the device. These are stress ratings only, which do not imply functional operation of the device at these or any other conditions beyond those indicated under *Recommended Operating Conditions*. Exposure to absolute-maximum-rated conditions for extended periods may affect device reliability.
- (2) The input voltage and output negative-voltage ratings may be exceeded if the input and output current ratings are observed.
- (3) The output positive-voltage rating may be exceeded up to 4.2 V maximum if the output current rating is observed.

6.2 ESD Ratings

		VALUE	UNIT
$V_{(ESD)}$ Electrostatic discharge	Human-body model (HBM), per ANSI/ESDA/JEDEC JS-001 ⁽¹⁾	±8000	V
	Charged-device model (CDM), per JEDEC specification JESD22-C101 ⁽²⁾	±1000	

- (1) JEDEC document JEP155 states that 500-V HBM allows safe manufacturing with a standard ESD control process.
- (2) JEDEC document JEP157 states that 250-V CDM allows safe manufacturing with a standard ESD control process.

6.3 Recommended Operating Conditions

over operating free-air temperature range (unless otherwise noted) ⁽¹⁾⁽²⁾⁽³⁾

		MIN	MAX	UNIT	
V _{CCA}	Supply voltage	0.65	3.6	V	
V _{CCB}	Supply voltage	0.65	3.6	V	
V _{IH}	High-level input voltage	Data inputs	V _{CCI} = 0.65 V - 0.75 V	V _{CCI} × 0.70	V
			V _{CCI} = 0.76 V - 1 V	V _{CCI} × 0.70	
			V _{CCI} = 1.1 V - 1.95 V	V _{CCI} × 0.65	
			V _{CCI} = 2.3 V - 2.7 V	1.6	
			V _{CCI} = 3 V - 3.6 V	2	
	Control inputs (DIR, \overline{OE}) Referenced to V _{CCA}	V _{CCA} = 0.65 V - 0.75 V	V _{CCA} × 0.70		
		V _{CCA} = 0.76 V - 1 V	V _{CCA} × 0.70		
		V _{CCA} = 1.1 V - 1.95 V	V _{CCA} × 0.65		
		V _{CCA} = 2.3 V - 2.7 V	1.6		
		V _{CCA} = 3 V - 3.6 V	2		
V _{IL}	Low-level input voltage	Data inputs	V _{CCI} = 0.65 V - 0.75 V	V _{CCI} × 0.30	V
			V _{CCI} = 0.76 V - 1 V	V _{CCI} × 0.30	
			V _{CCI} = 1.1 V - 1.95 V	V _{CCI} × 0.35	
			V _{CCI} = 2.3 V - 2.7 V	0.7	
			V _{CCI} = 3 V - 3.6 V	0.8	
	Control inputs (DIR, \overline{OE}) Referenced to V _{CCA}	V _{CCA} = 0.65 V - 0.75 V	V _{CCA} × 0.30		
		V _{CCA} = 0.76 V - 1 V	V _{CCA} × 0.30		
		V _{CCA} = 1.1 V - 1.95 V	V _{CCA} × 0.35		
		V _{CCA} = 2.3 V - 2.7 V	0.7		
		V _{CCA} = 3 V - 3.6 V	0.8		
V _I	Input voltage ⁽³⁾	0	3.6	V	
V _O	Output voltage	Active state	0	V _{CCO} ⁽²⁾	V
		Tri-state	0	3.6	
$\Delta t/\Delta v$	Input transition rise or fall rate		10	ns/V	
T _A	Operating free-air temperature	-40	125	°C	

(1) V_{CCI} is the V_{CC} associated with the input port.

(2) V_{CCO} is the V_{CC} associated with the output port.

(3) All unused data inputs of the device must be held at V_{CCI} or GND to ensure proper device operation. See the [Implications of Slow or Floating CMOS Inputs](#) application report.

6.4 Thermal Information

THERMAL METRIC ⁽¹⁾	SN74AXCH8T245		UNIT	
	PW (TSSOP)	RHL (VQFN)		
	24 PINS	24 PINS		
R _{θJA}	Junction-to-ambient thermal resistance	101.7	35	°C/W
R _{θJC(top)}	Junction-to-case (top) thermal resistance	45.4	39.9	°C/W
R _{θJB}	Junction-to-board thermal resistance	56.9	13.8	°C/W
ψ _{JT}	Junction-to-top characterization parameter	7.0	0.3	°C/W
ψ _{JB}	Junction-to-board characterization parameter	56.4	13.8	°C/W
R _{θJC(bot)}	Junction-to-case (bottom) thermal resistance	N/A	1.4	°C/W

(1) For more information about traditional and new thermal metrics, see the [Semiconductor and IC Package Thermal Metrics](#) application report.

6.5 Electrical Characteristics

 Over recommended operating free-air temperature range (unless otherwise noted)⁽¹⁾

PARAMETER	TEST CONDITIONS		V _{CCA}	V _{CCB}	–40°C to 85°C			–40°C to 125°C			UNIT
					MIN	TYP ⁽²⁾	MAX	MIN	TYP ⁽²⁾	MAX	
V _{OH} High-level output voltage	V _I = V _{IH}	I _{OH} = –100 μA	0.7 V - 3.6 V	0.7 V - 3.6 V	V _{CCO} – 0.1			V _{CCO} – 0.1			V
		I _{OH} = –50 μA	0.65 V	0.65 V	0.55			0.55			
		I _{OH} = –200 μA	0.76 V	0.76 V	0.58			0.58			
		I _{OH} = –500 μA	0.85 V	0.85 V	0.65			0.65			
		I _{OH} = –3 mA	1.1 V	1.1 V	0.85			0.85			
		I _{OH} = –6 mA	1.4 V	1.4 V	1.05			1.05			
		I _{OH} = –8 mA	1.65 V	1.65 V	1.2			1.2			
		I _{OH} = –9 mA	2.3 V	2.3 V	1.75			1.75			
V _{OL} Low-level output voltage	V _I = V _{IL}	I _{OL} = 100 μA	0.7 V - 3.6 V	0.7 V - 3.6 V							V
		I _{OL} = 50 μA	0.65 V	0.65 V							
		I _{OL} = 200 μA	0.76 V	0.76 V							
		I _{OL} = 500 μA	0.85 V	0.85 V							
		I _{OL} = 3 mA	1.1 V	1.1 V							
		I _{OL} = 6 mA	1.4 V	1.4 V							
		I _{OL} = 8 mA	1.65 V	1.65 V							
		I _{OL} = 9 mA	2.3 V	2.3 V							
I _{BHL} Bus-hold low sustaining current ⁽³⁾	V _I = 0.20 V		0.65 V	0.65 V	4			4			μA
		V _I = 0.23 V	0.76 V	0.76 V	8			7			
		V _I = 0.26 V	0.85 V	0.85 V	10			10			
		V _I = 0.39 V	1.1 V	1.1 V	20			20			
		V _I = 0.49 V	1.4 V	1.4 V	40			30			
		V _I = 0.58 V	1.65 V	1.65 V	55			45			
		V _I = 0.7 V	2.3 V	2.3 V	90			80			
		V _I = 0.8 V	3 V	3 V	145			135			
I _{BHH} Bus-hold high sustaining current ⁽⁴⁾	V _I = 0.45 V		0.65 V	0.65 V	–4			–4			μA
		V _I = 0.53 V	0.76 V	0.76 V	–8			–7			
		V _I = 0.59 V	0.85 V	0.85 V	–10			–10			
		V _I = 0.71 V	1.1 V	1.1 V	–20			–20			
		V _I = 0.91 V	1.4 V	1.4 V	–40			–30			
		V _I = 1.07 V	1.65 V	1.65 V	–55			–45			
		V _I = 1.6 V	2.3 V	2.3 V	–90			–80			
		V _I = 2.0 V	3 V	3 V	–145			–135			
I _{BHLO} Bus-hold low overdrive current ⁽⁵⁾	V _I = 0 to V _{CC}		0.75 V	0.75 V	40			40			μA
			0.84 V	0.84 V	50			50			
			0.95 V	0.95 V	65			65			
			1.3 V	1.3 V	105			105			
			1.6 V	1.6 V	150			150			
			1.95 V	1.95 V	205			205			
			2.7 V	2.7 V	335			335			
			3.6V	3.6V	480			480			

(1) V_{CCO} is the V_{CC} associated with the output port.

(2) All typical values are for T_A = 25°C.

(3) The bus-hold circuit can sink at least the minimum low sustaining current at V_{IL}(MAX). I_{BHL} should be measured after lowering V_I to GND and then raising it to V_{IL}(MAX).

(4) The bus-hold circuit can source at least the minimum high sustaining current at V_{IH}(MIN). I_{BHH} should be measured after raising V_I to V_{CC} and then lowering it to V_{IH}(MIN).

(5) An external driver must source at least I_{BHLO} to switch this node from low to high.

Electrical Characteristics (continued)

Over recommended operating free-air temperature range (unless otherwise noted)⁽¹⁾

PARAMETER	TEST CONDITIONS	V _{CCA}	V _{CCB}	–40°C to 85°C			–40°C to 125°C			UNIT
				MIN	TYP ⁽²⁾	MAX	MIN	TYP ⁽²⁾	MAX	
I _{BHHO}	Bus-hold high overdrive current ⁽⁶⁾ V _I = 0 to V _{CC}	0.75 V	0.75 V	–40			–40			μA
		0.84 V	0.84 V	–50			–50			
		0.95 V	0.95 V	–65			–65			
		1.3 V	1.3 V	–105			–105			
		1.6 V	1.6 V	–150			–150			
		1.95 V	1.95 V	–205			–205			
		2.7 V	2.7 V	–335			–335			
		3.6V	3.6V	–480			–480			
I _I	Input leakage current Control Inputs (DIR, \overline{OE}): V _I = V _{CCA} or GND	0.65 V - 3.6 V	0.65 V - 3.6 V	–0.5		0.5	–1		1	μA
I _{off}	A Port: V _I or V _O = 0 V - 3.6 V	0 V	0 V - 3.6 V	–8		8	–12		12	μA
	B Port: V _I or V _O = 0 V - 3.6 V	0 V - 3.6 V	0 V	–8		8	–12		12	
I _{OZ}	A Port: V _O = V _{CCO} or GND, V _I = V _{CCI} or GND, \overline{OE} = V _{IH}	3.6 V	3.6 V	–8		8	–12		12	μA
	B Port: V _O = V _{CCO} or GND, V _I = V _{CCI} or GND, \overline{OE} = V _{IH}	3.6 V	3.6 V	–8		8	–12		12	
I _{CCA}	V _{CCA} supply current V _I = V _{CCI} or GND, I _O = 0 mA	0.65 V - 3.6 V	0.65 V - 3.6 V			20			42	μA
		0 V	3.6 V	–2			–12			
		3.6 V	0 V			13			27	
I _{CCB}	V _{CCB} supply current V _I = V _{CCI} or GND, I _O = 0 mA	0.65 V - 3.6 V	0.65 V - 3.6 V			20			40	μA
		0 V	3.6 V			13			27	
		3.6 V	0 V	–2			–12			
I _{CCA} + I _{CCB}	Combined supply current V _I = V _{CCI} or GND, I _O = 0 mA	0.65 V - 3.6 V	0.65 V - 3.6 V			30			60	μA
C _i	Input capacitance Control Inputs (DIR, \overline{OE}): V _I = 3.3 V or GND	3.3 V	3.3 V		4.5			4.5		pF
C _{io}	Data I/O capacitance Ports A and B: \overline{OE} = V _{CCA} , V _O = 1.65V DC + 1 MHz -16 dBm sine wave	3.3 V	3.3 V		7.3			7.3		pF

(6) An external driver must sink at least I_{BHHO} to switch this node from high to low.

6.6 Switching Characteristics, $V_{CCA} = 0.7\text{ V}$

See [Figure 1](#) and [Figure 2](#) for test circuit and loading conditions. See [Figure 3](#) and [Figure 4](#) for measurement waveforms.

PARAMETER		TEST CONDITION	B-PORT SUPPLY VOLTAGE (V_{CCB})								UNIT		
			0.7 V ± 0.05 V		0.8 V ± 0.04 V		0.9 V ± 0.045 V		1.2 V ± 0.1 V				
			MIN	MAX	MIN	MAX	MIN	MAX	MIN	MAX			
t_{pd}	Propagation delay	A input to B output	–40°C to 85°C		0.5	178	0.5	115	0.5	83	0.5	49	ns
			–40°C to 125°C		0.5	178	0.5	115	0.5	83	0.5	49	
	B input to A output	–40°C to 85°C		0.5	178	0.5	159	0.5	132	0.5	94		
		–40°C to 125°C		0.5	178	0.5	159	0.5	132	0.5	94		
t_{dis}	Disable time	\overline{OE} input to A output	–40°C to 85°C		0.5	194	0.5	194	0.5	194	0.5	194	ns
			–40°C to 125°C		0.5	194	0.5	194	0.5	194	0.5	194	
	\overline{OE} input to B output	–40°C to 85°C		0.5	216	0.5	179	0.5	158	0.5	78		
		–40°C to 125°C		0.5	216	0.5	179	0.5	158	0.5	78		
t_{en}	Enable time	\overline{OE} input to A output	–40°C to 85°C		0.5	240	0.5	240	0.5	240	0.5	240	ns
			–40°C to 125°C		0.5	240	0.5	240	0.5	240	0.5	240	
	\overline{OE} input to B output	–40°C to 85°C		0.5	292	0.5	180	0.5	125	0.5	76		
		–40°C to 125°C		0.5	292	0.5	180	0.5	125	0.5	76		

PARAMETER		TEST CONDITION	B-PORT SUPPLY VOLTAGE (V_{CCB})								UNIT		
			1.5 V ± 0.1 V		1.8 V ± 0.15 V		2.5 V ± 0.2 V		3.3 V ± 0.3 V				
			MIN	MAX	MIN	MAX	MIN	MAX	MIN	MAX			
t_{pd}	Propagation delay	A input to B output	–40°C to 85°C		0.5	47	0.5	50	0.5	62	0.5	151	ns
			–40°C to 125°C		0.5	47	0.5	50	0.5	62	0.5	151	
	B input to A output	–40°C to 85°C		0.5	89	0.5	88	0.5	87	0.5	86		
		–40°C to 125°C		0.5	89	0.5	88	0.5	87	0.5	86		
t_{dis}	Disable time	\overline{OE} input to A output	–40°C to 85°C		0.5	194	0.5	194	0.5	194	0.5	194	ns
			–40°C to 125°C		0.5	194	0.5	194	0.5	194	0.5	194	
	\overline{OE} input to B output	–40°C to 85°C		0.5	70	0.5	69	0.5	67	0.5	101		
		–40°C to 125°C		0.5	70	0.5	69	0.5	67	0.5	101		
t_{en}	Enable time	\overline{OE} input to A output	–40°C to 85°C		0.5	240	0.5	240	0.5	240	0.5	240	ns
			–40°C to 125°C		0.5	240	0.5	240	0.5	240	0.5	240	
	\overline{OE} input to B output	–40°C to 85°C		0.5	69	0.5	69	0.5	84	0.5	552		
		–40°C to 125°C		0.5	69	0.5	69	0.5	84	0.5	552		

6.7 Switching Characteristics, $V_{CCA} = 0.8\text{ V}$

See [Figure 1](#) and [Figure 2](#) for test circuit and loading conditions. See [Figure 3](#) and [Figure 4](#) for measurement waveforms.

PARAMETER		TEST CONDITION	B-PORT SUPPLY VOLTAGE (V_{CCB})								UNIT		
			0.7 V \pm 0.05 V		0.8 V \pm 0.04 V		0.9 V \pm 0.045 V		1.2 V \pm 0.1 V				
			MIN	MAX	MIN	MAX	MIN	MAX	MIN	MAX			
t_{pd}	Propagation delay	A input to B output	–40°C to 85°C		0.5	159	0.5	96	0.5	64	0.5	33	ns
			–40°C to 125°C		0.5	159	0.5	96	0.5	64	0.5	33	
	B input to A output	–40°C to 85°C		0.5	117	0.5	97	0.5	79	0.5	54		
		–40°C to 125°C		0.5	117	0.5	97	0.5	79	0.5	54		
t_{dis}	Disable time	\overline{OE} input to A output	–40°C to 85°C		0.5	154	0.5	154	0.5	154	0.5	154	ns
			–40°C to 125°C		0.5	154	0.5	154	0.5	154	0.5	154	
	\overline{OE} input to B output	–40°C to 85°C		0.5	202	0.5	165	0.5	144	0.5	65		
		–40°C to 125°C		0.5	202	0.5	165	0.5	144	0.5	65		
t_{en}	Enable time	\overline{OE} input to A output	–40°C to 85°C		0.5	137	0.5	137	0.5	137	0.5	137	ns
			–40°C to 125°C		0.5	137	0.5	137	0.5	137	0.5	137	
	\overline{OE} input to B output	–40°C to 85°C		0.5	270	0.5	160	0.5	104	0.5	55		
		–40°C to 125°C		0.5	270	0.5	160	0.5	104	0.5	55		

PARAMETER		TEST CONDITION	B-PORT SUPPLY VOLTAGE (V_{CCB})								UNIT		
			1.5 V \pm 0.1 V		1.8 V \pm 0.15 V		2.5 V \pm 0.2 V		3.3 V \pm 0.3 V				
			MIN	MAX	MIN	MAX	MIN	MAX	MIN	MAX			
t_{pd}	Propagation delay	A input to B output	–40°C to 85°C		0.5	27	0.5	26	0.5	26	0.5	35	ns
			–40°C to 125°C		0.5	27	0.5	26	0.5	26	0.5	35	
	B input to A output	–40°C to 85°C		0.5	44	0.5	43	0.5	42	0.5	41		
		–40°C to 125°C		0.5	44	0.5	43	0.5	42	0.5	41		
t_{dis}	Disable time	\overline{OE} input to A output	–40°C to 85°C		0.5	154	0.5	154	0.5	154	0.5	154	ns
			–40°C to 125°C		0.5	154	0.5	154	0.5	154	0.5	154	
	\overline{OE} input to B output	–40°C to 85°C		0.5	57	0.5	55	0.5	50	0.5	52		
		–40°C to 125°C		0.5	57	0.5	55	0.5	50	0.5	52		
t_{en}	Enable time	\overline{OE} input to A output	–40°C to 85°C		0.5	137	0.5	137	0.5	137	0.5	137	ns
			–40°C to 125°C		0.5	137	0.5	137	0.5	137	0.5	137	
	\overline{OE} input to B output	–40°C to 85°C		0.5	46	0.5	44	0.5	46	0.5	59		
		–40°C to 125°C		0.5	46	0.5	44	0.5	46	0.5	59		

6.8 Switching Characteristics, $V_{CCA} = 0.9\text{ V}$

See [Figure 1](#) and [Figure 2](#) for test circuit and loading conditions. See [Figure 3](#) and [Figure 4](#) for measurement waveforms.

PARAMETER		TEST CONDITION	B-PORT SUPPLY VOLTAGE (V_{CCB})								UNIT	
			0.7 V \pm 0.05 V		0.8 V \pm 0.04 V		0.9 V \pm 0.045 V		1.2 V \pm 0.1 V			
			MIN	MAX	MIN	MAX	MIN	MAX	MIN	MAX		
t_{pd}	Propagation delay	A input to output	-40°C to 85°C	0.5	133	0.5	79	0.5	53	0.5	23	ns
			-40°C to 125°C	0.5	133	0.5	79	0.5	53	0.5	23	
	B input to A output	-40°C to 85°C	0.5	84	0.5	64	0.5	53	0.5	41		
		-40°C to 125°C	0.5	84	0.5	64	0.5	53	0.5	41		
t_{dis}	Disable time	\overline{OE} input to A output	-40°C to 85°C	0.5	130	0.5	130	0.5	130	0.5	130	ns
			-40°C to 125°C	0.5	130	0.5	130	0.5	130	0.5	130	
	\overline{OE} input to B output	-40°C to 85°C	0.5	193	0.5	157	0.5	137	0.5	57		
		-40°C to 125°C	0.5	193	0.5	157	0.5	137	0.5	57		
t_{en}	Enable time	\overline{OE} input to A output	-40°C to 85°C	0.5	128	0.5	128	0.5	128	0.5	128	ns
			-40°C to 125°C	0.5	128	0.5	128	0.5	128	0.5	128	
	\overline{OE} input to B output	-40°C to 85°C	0.5	257	0.5	149	0.5	94	0.5	45		
		-40°C to 125°C	0.5	257	0.5	149	0.5	94	0.5	45		

PARAMETER		TEST CONDITION	B-PORT SUPPLY VOLTAGE (V_{CCB})								UNIT	
			1.5 V \pm 0.1 V		1.8 V \pm 0.15 V		2.5 V \pm 0.2 V		3.3 V \pm 0.3 V			
			MIN	MAX	MIN	MAX	MIN	MAX	MIN	MAX		
t_{pd}	Propagation delay	A input to B output	-40°C to 85°C	0.5	18	0.5	16	0.5	15	0.5	18	ns
			-40°C to 125°C	0.5	18	0.5	16	0.5	15	0.5	18	
	B input to A output	-40°C to 85°C	0.5	29	0.5	25	0.5	23	0.5	22		
		-40°C to 125°C	0.5	29	0.5	25	0.5	23	0.5	22		
t_{dis}	Disable time	\overline{OE} input to A output	-40°C to 85°C	0.5	130	0.5	130	0.5	130	0.5	130	ns
			-40°C to 125°C	0.5	130	0.5	130	0.5	130	0.5	130	
	\overline{OE} input to B output	-40°C to 85°C	0.5	50	0.5	48	0.5	42	0.5	43		
		-40°C to 125°C	0.5	50	0.5	48	0.5	42	0.5	43		
t_{en}	Enable time	\overline{OE} input to A output	-40°C to 85°C	0.5	128	0.5	128	0.5	128	0.5	128	ns
			-40°C to 125°C	0.5	128	0.5	128	0.5	128	0.5	128	
	\overline{OE} input to B output	-40°C to 85°C	0.5	37	0.5	34	0.5	32	0.5	36		
		-40°C to 125°C	0.5	37	0.5	34	0.5	32	0.5	36		

6.9 Switching Characteristics, $V_{CCA} = 1.2\text{ V}$

See [Figure 1](#) and [Figure 2](#) for test circuit and loading conditions. See [Figure 3](#) and [Figure 4](#) for measurement waveforms.

PARAMETER		TEST CONDITION	B-PORT SUPPLY VOLTAGE (V_{CCB})								UNIT		
			0.7 V \pm 0.05 V		0.8 V \pm 0.04 V		0.9 V \pm 0.045 V		1.2 V \pm 0.1 V				
			MIN	MAX	MIN	MAX	MIN	MAX	MIN	MAX			
t_{pd}	Propagation delay	A input to B output	–40°C to 85°C		0.5	95	0.5	54	0.5	40	0.5	15	ns
			–40°C to 125°C		0.5	95	0.5	54	0.5	40	0.5	15	
	B input to A output	–40°C to 85°C		0.5	49	0.5	33	0.5	23	0.5	15		
		–40°C to 125°C		0.5	49	0.5	33	0.5	23	0.5	15		
t_{dis}	Disable time	\overline{OE} input to A output	–40°C to 85°C		0.5	47	0.5	47	0.5	47	0.5	47	ns
			–40°C to 125°C		0.5	47	0.5	47	0.5	47	0.5	47	
	\overline{OE} input to B output	–40°C to 85°C		0.5	181	0.5	147	0.5	127	0.5	49		
		–40°C to 125°C		0.5	181	0.5	147	0.5	127	0.5	49		
t_{en}	Enable time	\overline{OE} input to A output	–40°C to 85°C		0.5	40	0.5	40	0.5	40	0.5	40	ns
			–40°C to 125°C		0.5	40	0.5	40	0.5	40	0.5	40	
	\overline{OE} input to B output	–40°C to 85°C		0.5	221	0.5	132	0.5	81	0.5	34		
		–40°C to 125°C		0.5	221	0.5	132	0.5	81	0.5	34		

PARAMETER		TEST CONDITION	B-PORT SUPPLY VOLTAGE (V_{CCB})								UNIT		
			1.5 V \pm 0.1 V		1.8 V \pm 0.15 V		2.5 V \pm 0.2 V		3.3 V \pm 0.3 V				
			MIN	MAX	MIN	MAX	MIN	MAX	MIN	MAX			
t_{pd}	Propagation delay	A input to B output	–40°C to 85°C		0.5	11	0.5	9	0.5	8	0.5	8	ns
			–40°C to 125°C		0.5	11	0.5	9	0.5	8	0.5	8	
	B input to A output	–40°C to 85°C		0.5	12	0.5	10	0.5	8	0.5	8		
		–40°C to 125°C		0.5	12	0.5	10	0.5	8	0.5	8		
t_{dis}	Disable time	\overline{OE} input to A output	–40°C to 85°C		0.5	47	0.5	47	0.5	47	0.5	47	ns
			–40°C to 125°C		0.5	47	0.5	47	0.5	47	0.5	47	
	\overline{OE} input to B output	–40°C to 85°C		0.5	42	0.5	40	0.5	34	0.5	34		
		–40°C to 125°C		0.5	42	0.5	40	0.5	34	0.5	34		
t_{en}	Enable time	\overline{OE} input to A output	–40°C to 85°C		0.5	39	0.5	40	0.5	40	0.5	40	ns
			–40°C to 125°C		0.5	39	0.5	40	0.5	40	0.5	40	
	\overline{OE} input to B output	–40°C to 85°C		0.5	25	0.5	22	0.5	20	0.5	19		
		–40°C to 125°C		0.5	25	0.5	22	0.5	20	0.5	19		

6.10 Switching Characteristics, $V_{CCA} = 1.5\text{ V}$

See [Figure 1](#) and [Figure 2](#) for test circuit and loading conditions. See [Figure 3](#) and [Figure 4](#) for measurement waveforms.

PARAMETER		TEST CONDITION	B-PORT SUPPLY VOLTAGE (V_{CCB})								UNIT		
			0.7 V ± 0.05 V		0.8 V ± 0.04 V		0.9 V ± 0.045 V		1.2 V ± 0.1 V				
			MIN	MAX	MIN	MAX	MIN	MAX	MIN	MAX			
t_{pd}	Propagation delay	A input to B output	–40°C to 85°C		0.5	90	0.5	44	0.5	29	0.5	12	ns
			–40°C to 125°C		0.5	90	0.5	44	0.5	29	0.5	12	
	B input to A output	–40°C to 85°C		0.5	47	0.5	27	0.5	18	0.5	11		
		–40°C to 125°C		0.5	47	0.5	27	0.5	18	0.5	11		
t_{dis}	Disable time	\overline{OE} input to A output	–40°C to 85°C		0.5	37	0.5	37	0.5	37	0.5	37	ns
			–40°C to 125°C		0.5	37	0.5	37	0.5	37	0.5	37	
	\overline{OE} input to B output	–40°C to 85°C		0.5	176	0.5	142	0.5	122	0.5	44		
		–40°C to 125°C		0.5	176	0.5	142	0.5	122	0.5	44		
t_{en}	Enable time	\overline{OE} input to A output	–40°C to 85°C		0.5	25	0.5	25	0.5	25	0.5	25	ns
			–40°C to 125°C		0.5	25	0.5	25	0.5	25	0.5	25	
	\overline{OE} input to B output	–40°C to 85°C		0.5	214	0.5	114	0.5	71	0.5	29		
		–40°C to 125°C		0.5	214	0.5	114	0.5	71	0.5	29		

PARAMETER		TEST CONDITION	B-PORT SUPPLY VOLTAGE (V_{CCB})								UNIT		
			1.5 V ± 0.1 V		1.8 V ± 0.15 V		2.5 V ± 0.2 V		3.3 V ± 0.3 V				
			MIN	MAX	MIN	MAX	MIN	MAX	MIN	MAX			
t_{pd}	Propagation delay	A input to B output	–40°C to 85°C		0.5	9	0.5	8	0.5	6	0.5	6	ns
			–40°C to 125°C		0.5	9	0.5	8	0.5	6	0.5	6	
	B input to A output	–40°C to 85°C		0.5	9	0.5	8	0.5	6	0.5	5		
		–40°C to 125°C		0.5	9	0.5	8	0.5	6	0.5	5		
t_{dis}	Disable time	\overline{OE} input to A output	–40°C to 85°C		0.5	37	0.5	37	0.5	37	0.5	37	ns
			–40°C to 125°C		0.5	37	0.5	37	0.5	37	0.5	37	
	\overline{OE} input to B output	–40°C to 85°C		0.5	38	0.5	37	0.5	31	0.5	31		
		–40°C to 125°C		0.5	38	0.5	37	0.5	31	0.5	31		
t_{en}	Enable time	\overline{OE} input to A output	–40°C to 85°C		0.5	25	0.5	25	0.5	25	0.5	25	ns
			–40°C to 125°C		0.5	25	0.5	25	0.5	25	0.5	25	
	\overline{OE} input to B output	–40°C to 85°C		0.5	21	0.5	18	0.5	15	0.5	13		
		–40°C to 125°C		0.5	21	0.5	18	0.5	15	0.5	13		

6.11 Switching Characteristics, $V_{CCA} = 1.8\text{ V}$

See [Figure 1](#) and [Figure 2](#) for test circuit and loading conditions. See [Figure 3](#) and [Figure 4](#) for measurement waveforms.

PARAMETER		TEST CONDITION	B-PORT SUPPLY VOLTAGE (V_{CCB})								UNIT		
			0.7 V \pm 0.05 V		0.8 V \pm 0.04 V		0.9 V \pm 0.045 V		1.2 V \pm 0.1 V				
			MIN	MAX	MIN	MAX	MIN	MAX	MIN	MAX			
t_{pd}	Propagation delay	A input to B output	–40°C to 85°C		0.5	88	0.5	43	0.5	25	0.5	10	ns
			–40°C to 125°C		0.5	88	0.5	43	0.5	25	0.5	10	
	B input to A output	–40°C to 85°C		0.5	50	0.5	26	0.5	16	0.5	9		
		–40°C to 125°C		0.5	50	0.5	26	0.5	16	0.5	9		
t_{dis}	Disable time	\overline{OE} input to A output	–40°C to 85°C		0.5	35	0.5	35	0.5	35	0.5	35	ns
			–40°C to 125°C		0.5	35	0.5	35	0.5	35	0.5	35	
	\overline{OE} input to B output	–40°C to 85°C		0.5	174	0.5	139	0.5	119	0.5	42		
		–40°C to 125°C		0.5	174	0.5	139	0.5	119	0.5	42		
t_{en}	Enable time	\overline{OE} input to A output	–40°C to 85°C		0.5	20	0.5	20	0.5	20	0.5	20	ns
			–40°C to 125°C		0.5	20	0.5	20	0.5	20	0.5	20	
	\overline{OE} input to B output	–40°C to 85°C		0.5	213	0.5	111	0.5	67	0.5	27		
		–40°C to 125°C		0.5	213	0.5	111	0.5	67	0.5	27		

PARAMETER		TEST CONDITION	B-PORT SUPPLY VOLTAGE (V_{CCB})								UNIT		
			1.5 V \pm 0.1 V		1.8 V \pm 0.15 V		2.5 V \pm 0.2 V		3.3 V \pm 0.3 V				
			MIN	MAX	MIN	MAX	MIN	MAX	MIN	MAX			
t_{pd}	Propagation delay	A input to B output	–40°C to 85°C		0.5	8	0.5	7	0.5	6	0.5	5	ns
			–40°C to 125°C		0.5	8	0.5	7	0.5	6	0.5	5	
	B input to A output	–40°C to 85°C		0.5	7	0.5	6	0.5	5	0.5	4		
		–40°C to 125°C		0.5	7	0.5	7	0.5	5	0.5	4		
t_{dis}	Disable time	\overline{OE} input to A output	–40°C to 85°C		0.5	35	0.5	35	0.5	35	0.5	35	ns
			–40°C to 125°C		0.5	35	0.5	35	0.5	35	0.5	35	
	\overline{OE} input to B output	–40°C to 85°C		0.5	36	0.5	35	0.5	30	0.5	29		
		–40°C to 125°C		0.5	36	0.5	35	0.5	30	0.5	29		
t_{en}	Enable time	\overline{OE} input to A output	–40°C to 85°C		0.5	20	0.5	20	0.5	20	0.5	20	ns
			–40°C to 125°C		0.5	20	0.5	20	0.5	20	0.5	20	
	\overline{OE} input to B output	–40°C to 85°C		0.5	19	0.5	16	0.5	13	0.5	11		
		–40°C to 125°C		0.5	19	0.5	16	0.5	13	0.5	11		

6.12 Switching Characteristics, $V_{CCA} = 2.5\text{ V}$

See [Figure 1](#) and [Figure 2](#) for test circuit and loading conditions. See [Figure 3](#) and [Figure 4](#) for measurement waveforms.

PARAMETER		TEST CONDITION	B-PORT SUPPLY VOLTAGE (V_{CCB})								UNIT		
			0.7 V ± 0.05 V		0.8 V ± 0.04 V		0.9 V ± 0.045 V		1.2 V ± 0.1 V				
			MIN	MAX	MIN	MAX	MIN	MAX	MIN	MAX			
t_{pd}	Propagation delay	A input to B output	–40°C to 85°C		0.5	87	0.5	42	0.5	23	0.5	8	ns
			–40°C to 125°C		0.5	87	0.5	42	0.5	23	0.5	8	
	B input to A output	–40°C to 85°C		0.5	62	0.5	26	0.5	15	0.5	8		
		–40°C to 125°C		0.5	62	0.5	26	0.5	15	0.5	8		
t_{dis}	Disable time	\overline{OE} input to A output	–40°C to 85°C		0.5	28	0.5	28	0.5	28	0.5	28	ns
			–40°C to 125°C		0.5	28	0.5	28	0.5	28	0.5	28	
	\overline{OE} input to B output	–40°C to 85°C		0.5	173	0.5	137	0.5	117	0.5	40		
		–40°C to 125°C		0.5	173	0.5	137	0.5	117	0.5	40		
t_{en}	Enable time	\overline{OE} input to A output	–40°C to 85°C		0.5	13	0.5	13	0.5	13	0.5	13	ns
			–40°C to 125°C		0.5	13	0.5	13	0.5	13	0.5	13	
	\overline{OE} input to B output	–40°C to 85°C		0.5	211	0.5	107	0.5	63	0.5	24		
		–40°C to 125°C		0.5	211	0.5	107	0.5	63	0.5	24		

PARAMETER		TEST CONDITION	B-PORT SUPPLY VOLTAGE (V_{CCB})								UNIT		
			1.5 V ± 0.1 V		1.8 V ± 0.15 V		2.5 V ± 0.2 V		3.3 V ± 0.3 V				
			MIN	MAX	MIN	MAX	MIN	MAX	MIN	MAX			
t_{pd}	Propagation delay	A input to B output	–40°C to 85°C		0.5	6	0.5	6	0.5	5	0.5	5	ns
			–40°C to 125°C		0.5	6	0.5	6	0.5	5	0.5	5	
	B input to A output	–40°C to 85°C		0.5	6	0.5	6	0.5	5	0.5	4		
		–40°C to 125°C		0.5	6	0.5	6	0.5	5	0.5	4		
t_{dis}	Disable time	\overline{OE} input to A output	–40°C to 85°C		0.5	28	0.5	28	0.5	28	0.5	28	ns
			–40°C to 125°C		0.5	28	0.5	28	0.5	28	0.5	28	
	\overline{OE} input to B output	–40°C to 85°C		0.5	34	0.5	33	0.5	28	0.5	28		
		–40°C to 125°C		0.5	34	0.5	33	0.5	28	0.5	28		
t_{en}	Enable time	\overline{OE} input to A output	–40°C to 85°C		0.5	13	0.5	13	0.5	13	0.5	13	ns
			–40°C to 125°C		0.5	13	0.5	13	0.5	13	0.5	13	
	\overline{OE} input to B output	–40°C to 85°C		0.5	16	0.5	14	0.5	10	0.5	9		
		–40°C to 125°C		0.5	16	0.5	14	0.5	10	0.5	9		

6.13 Switching Characteristics, $V_{CCA} = 3.3\text{ V}$

See [Figure 1](#) and [Figure 2](#) for test circuit and loading conditions. See [Figure 3](#) and [Figure 4](#) for measurement waveforms.

PARAMETER		TEST CONDITION	B-PORT SUPPLY VOLTAGE (V_{CCB})								UNIT		
			0.7 V \pm 0.05 V		0.8 V \pm 0.04 V		0.9 V \pm 0.045 V		1.2 V \pm 0.1 V				
			MIN	MAX	MIN	MAX	MIN	MAX	MIN	MAX			
t_{pd}	Propagation delay	A input to B output	–40°C to 85°C		0.5	87	0.5	41	0.5	22	0.5	8	ns
			–40°C to 125°C		0.5	87	0.5	41	0.5	22	0.5	8	
	B input to A output	–40°C to 85°C		0.5	151	0.5	36	0.5	18	0.5	8		
		–40°C to 125°C		0.5	151	0.5	36	0.5	18	0.5	8		
t_{dis}	Disable time	\overline{OE} input to A output	–40°C to 85°C		0.5	27	0.5	27	0.5	27	0.5	27	ns
			–40°C to 125°C		0.5	27	0.5	27	0.5	27	0.5	27	
	\overline{OE} input to B output	–40°C to 85°C		0.5	172	0.5	136	0.5	116	0.5	39		
		–40°C to 125°C		0.5	172	0.5	136	0.5	116	0.5	39		
t_{en}	Enable time	\overline{OE} input to A output	–40°C to 85°C		0.5	11	0.5	11	0.5	11	0.5	11	ns
			–40°C to 125°C		0.5	11	0.5	11	0.5	11	0.5	11	
	\overline{OE} input to B output	–40°C to 85°C		0.5	210	0.5	106	0.5	62	0.5	23		
		–40°C to 125°C		0.5	210	0.5	106	0.5	62	0.5	23		

PARAMETER		TEST CONDITION	B-PORT SUPPLY VOLTAGE (V_{CCB})								UNIT		
			1.5 V \pm 0.1 V		1.8 V \pm 0.15 V		2.5 V \pm 0.2 V		3.3 V \pm 0.3 V				
			MIN	MAX	MIN	MAX	MIN	MAX	MIN	MAX			
t_{pd}	Propagation delay	A input to B output	–40°C to 85°C		0.5	5	0.5	5	0.5	4	0.5	4	ns
			–40°C to 125°C		0.5	5	0.5	5	0.5	4	0.5	4	
	B input to A output	–40°C to 85°C		0.5	6	0.5	5	0.5	5	0.5	4		
		–40°C to 125°C		0.5	6	0.5	5	0.5	5	0.5	4		
t_{dis}	Disable time	\overline{OE} input to A output	–40°C to 85°C		0.5	27	0.5	27	0.5	27	0.5	27	ns
			–40°C to 125°C		0.5	27	0.5	27	0.5	27	0.5	27	
	\overline{OE} input to B output	–40°C to 85°C		0.5	33	0.5	32	0.5	27	0.5	27		
		–40°C to 125°C		0.5	33	0.5	32	0.5	27	0.5	27		
t_{en}	Enable time	\overline{OE} input to A output	–40°C to 85°C		0.5	11	0.5	11	0.5	11	0.5	11	ns
			–40°C to 125°C		0.5	11	0.5	11	0.5	11	0.5	11	
	\overline{OE} input to B output	–40°C to 85°C		0.5	15	0.5	13	0.5	10	0.5	8		
		–40°C to 125°C		0.5	15	0.5	13	0.5	10	0.5	8		

6.14 Operating Characteristics: $T_A = 25^\circ\text{C}$

PARAMETER	TEST CONDITIONS	MIN	TYP	MAX	UNIT
C_{pdA} Power dissipation capacitance per transceiver (A to B: outputs enabled)	$C_L = 0$, $R_L = \text{Open}$ $f = 1 \text{ MHz}$, $t_r = t_f = 1 \text{ ns}$	$V_{CCA} = V_{CCB} = 0.7 \text{ V}$		3.0	pF
		$V_{CCA} = V_{CCB} = 0.8 \text{ V}$		3.0	
		$V_{CCA} = V_{CCB} = 0.9 \text{ V}$		3.0	
		$V_{CCA} = V_{CCB} = 1.2 \text{ V}$		3.1	
		$V_{CCA} = V_{CCB} = 1.5 \text{ V}$		3.0	
		$V_{CCA} = V_{CCB} = 1.8 \text{ V}$		3.2	
		$V_{CCA} = V_{CCB} = 2.5 \text{ V}$		3.7	
		$V_{CCA} = V_{CCB} = 3.3 \text{ V}$		4.4	
C_{pdA} Power dissipation capacitance per transceiver (A to B: outputs disabled)	$C_L = 0$, $R_L = \text{Open}$ $f = 1 \text{ MHz}$, $t_r = t_f = 1 \text{ ns}$	$V_{CCA} = V_{CCB} = 0.7 \text{ V}$		2.5	pF
		$V_{CCA} = V_{CCB} = 0.8 \text{ V}$		2.5	
		$V_{CCA} = V_{CCB} = 0.9 \text{ V}$		2.6	
		$V_{CCA} = V_{CCB} = 1.2 \text{ V}$		2.6	
		$V_{CCA} = V_{CCB} = 1.5 \text{ V}$		2.6	
		$V_{CCA} = V_{CCB} = 1.8 \text{ V}$		2.7	
		$V_{CCA} = V_{CCB} = 2.5 \text{ V}$		3.2	
		$V_{CCA} = V_{CCB} = 3.3 \text{ V}$		3.9	
C_{pdA} Power dissipation capacitance per transceiver (B to A: outputs enabled)	$C_L = 0$, $R_L = \text{Open}$ $f = 1 \text{ MHz}$, $t_r = t_f = 1 \text{ ns}$	$V_{CCA} = V_{CCB} = 0.7 \text{ V}$		12.6	pF
		$V_{CCA} = V_{CCB} = 0.8 \text{ V}$		12.3	
		$V_{CCA} = V_{CCB} = 0.9 \text{ V}$		12.4	
		$V_{CCA} = V_{CCB} = 1.2 \text{ V}$		12.4	
		$V_{CCA} = V_{CCB} = 1.5 \text{ V}$		12.7	
		$V_{CCA} = V_{CCB} = 1.8 \text{ V}$		13.6	
		$V_{CCA} = V_{CCB} = 2.5 \text{ V}$		17.4	
		$V_{CCA} = V_{CCB} = 3.3 \text{ V}$		20.9	
C_{pdA} Power dissipation capacitance per transceiver (B to A: outputs disabled)	$C_L = 0$, $R_L = \text{Open}$ $f = 1 \text{ MHz}$, $t_r = t_f = 1 \text{ ns}$	$V_{CCA} = V_{CCB} = 0.7 \text{ V}$		1.2	pF
		$V_{CCA} = V_{CCB} = 0.8 \text{ V}$		1.1	
		$V_{CCA} = V_{CCB} = 0.9 \text{ V}$		1.1	
		$V_{CCA} = V_{CCB} = 1.2 \text{ V}$		1.0	
		$V_{CCA} = V_{CCB} = 1.5 \text{ V}$		1.0	
		$V_{CCA} = V_{CCB} = 1.8 \text{ V}$		0.9	
		$V_{CCA} = V_{CCB} = 2.5 \text{ V}$		0.9	
		$V_{CCA} = V_{CCB} = 3.3 \text{ V}$		0.9	

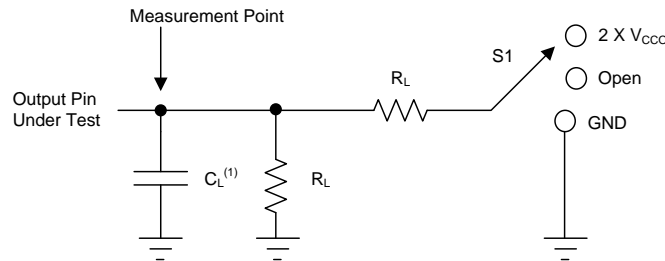
Operating Characteristics: $T_A = 25^\circ\text{C}$ (continued)

PARAMETER	TEST CONDITIONS	MIN	TYP	MAX	UNIT
C_{pdB} Power dissipation capacitance per transceiver (A to B: outputs enabled)	$C_L = 0$, $R_L = \text{Open}$ $f = 1 \text{ MHz}$, $t_r = t_f = 1 \text{ ns}$	$V_{CCA} = V_{CCB} = 0.7 \text{ V}$		12.6	pF
		$V_{CCA} = V_{CCB} = 0.8 \text{ V}$		12.4	
		$V_{CCA} = V_{CCB} = 0.9 \text{ V}$		12.4	
		$V_{CCA} = V_{CCB} = 1.2 \text{ V}$		12.4	
		$V_{CCA} = V_{CCB} = 1.5 \text{ V}$		12.6	
		$V_{CCA} = V_{CCB} = 1.8 \text{ V}$		13.6	
		$V_{CCA} = V_{CCB} = 2.5 \text{ V}$		17.2	
		$V_{CCA} = V_{CCB} = 3.3 \text{ V}$		20.8	
C_{pdB} Power dissipation capacitance per transceiver (A to B: outputs disabled)	$C_L = 0$, $R_L = \text{Open}$ $f = 1 \text{ MHz}$, $t_r = t_f = 1 \text{ ns}$	$V_{CCA} = V_{CCB} = 0.7 \text{ V}$		1.4	pF
		$V_{CCA} = V_{CCB} = 0.8 \text{ V}$		1.3	
		$V_{CCA} = V_{CCB} = 0.9 \text{ V}$		1.3	
		$V_{CCA} = V_{CCB} = 1.2 \text{ V}$		1.2	
		$V_{CCA} = V_{CCB} = 1.5 \text{ V}$		1.1	
		$V_{CCA} = V_{CCB} = 1.8 \text{ V}$		1.1	
		$V_{CCA} = V_{CCB} = 2.5 \text{ V}$		1.1	
		$V_{CCA} = V_{CCB} = 3.3 \text{ V}$		1.0	
C_{pdB} Power dissipation capacitance per transceiver (B to A: outputs enabled)	$C_L = 0$, $R_L = \text{Open}$ $f = 1 \text{ MHz}$, $t_r = t_f = 1 \text{ ns}$	$V_{CCA} = V_{CCB} = 0.7 \text{ V}$		3.3	pF
		$V_{CCA} = V_{CCB} = 0.8 \text{ V}$		3.3	
		$V_{CCA} = V_{CCB} = 0.9 \text{ V}$		3.3	
		$V_{CCA} = V_{CCB} = 1.2 \text{ V}$		3.2	
		$V_{CCA} = V_{CCB} = 1.5 \text{ V}$		3.2	
		$V_{CCA} = V_{CCB} = 1.8 \text{ V}$		3.3	
		$V_{CCA} = V_{CCB} = 2.5 \text{ V}$		3.6	
		$V_{CCA} = V_{CCB} = 3.3 \text{ V}$		4.4	
C_{pdB} Power dissipation capacitance per transceiver (B to A: outputs disabled)	$C_L = 0$, $R_L = \text{Open}$ $f = 1 \text{ MHz}$, $t_r = t_f = 1 \text{ ns}$	$V_{CCA} = V_{CCB} = 0.7 \text{ V}$		2.8	pF
		$V_{CCA} = V_{CCB} = 0.8 \text{ V}$		2.8	
		$V_{CCA} = V_{CCB} = 0.9 \text{ V}$		2.8	
		$V_{CCA} = V_{CCB} = 1.2 \text{ V}$		2.8	
		$V_{CCA} = V_{CCB} = 1.5 \text{ V}$		2.7	
		$V_{CCA} = V_{CCB} = 1.8 \text{ V}$		2.8	
		$V_{CCA} = V_{CCB} = 2.5 \text{ V}$		3.1	
		$V_{CCA} = V_{CCB} = 3.3 \text{ V}$		3.9	

7 Parameter Measurement Information

Unless otherwise noted, all input pulses are supplied by generators having the following characteristics:

- $f = 1$ MHz
- $Z_0 = 50 \Omega$
- $dv / dt \leq 1$ ns/V



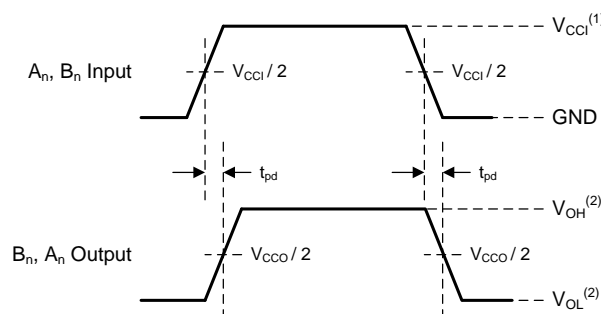
- (1) C_L includes probe and jig capacitance.

Figure 1. Load Circuit

Parameter	V_{CC0}	R_L	C_L	S1	V_{TP}
t_{pd}	1.1 V - 3.6 V	2 k Ω	15 pF	Open	N/A
	0.65 V - 0.95 V	20 k Ω	15 pF	Open	N/A
$t_{en}^{(1)}, t_{dis}^{(1)}$	3 V - 3.6 V	2 k Ω	15 pF	2 X V_{CC0}	0.3 V
	1.65 V - 2.7 V	2 k Ω	15 pF	2 X V_{CC0}	0.15 V
	1.1 V - 1.6 V	2 k Ω	15 pF	2 X V_{CC0}	0.1 V
	0.65 V - 0.95 V	20 k Ω	15 pF	2 X V_{CC0}	0.1 V
$t_{en}^{(2)}, t_{dis}^{(2)}$	3 V - 3.6 V	2 k Ω	15 pF	GND	0.3 V
	1.65 V - 2.7 V	2 k Ω	15 pF	GND	0.15 V
	1.1 V - 1.6 V	2 k Ω	15 pF	GND	0.1 V
	0.65 V - 0.95 V	20 k Ω	15 pF	GND	0.1 V

- (1) Output waveform on the conditions that input is driven to a valid Logic Low.
 (2) Output waveform on the condition that input is driven to a valid Logic High.

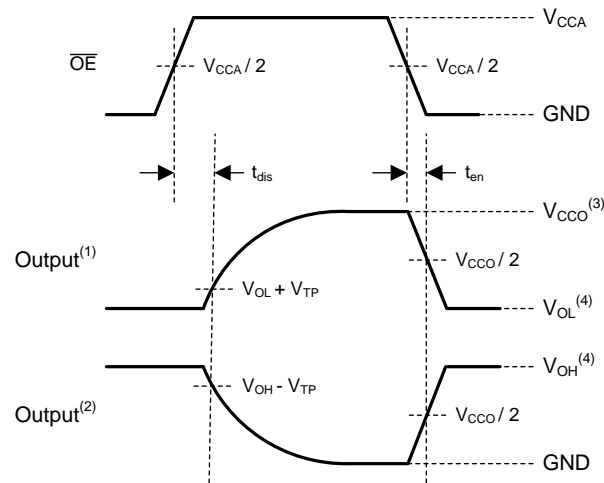
Figure 2. Load Circuit Conditions



- (1) V_{CC1} is the supply pin associated with the input port.
 (2) V_{OH} and V_{OL} are typical output voltage levels with specified R_L , C_L , and S_1 .

Figure 3. Propagation Delay

Parameter Measurement Information (continued)



- (1) Output waveform on the condition that input is driven to a valid Logic Low.
- (2) Output waveform on the condition that input is driven to a valid Logic High.
- (3) V_{CCO} is the supply pin associated with the output port.
- (4) V_{OH} and V_{OL} are typical output voltage levels with specified R_L , C_L , and S_1 .

Figure 4. Enable Time And Disable Time

8 Detailed Description

8.1 Overview

The SN74AXCH8T245 device is an 8-bit, dual-supply non-inverting transceiver with bidirectional voltage level translation. The I/O pins labeled with A and the control pins (DIR1, DIR2, and \overline{OE}) are supported by V_{CCA} , and the I/O pins labeled with B are supported by V_{CCB} . Both the A port and the B port are able to accept I/O voltages ranging from 0.65 V to 3.6 V.

8.2 Functional Block Diagram

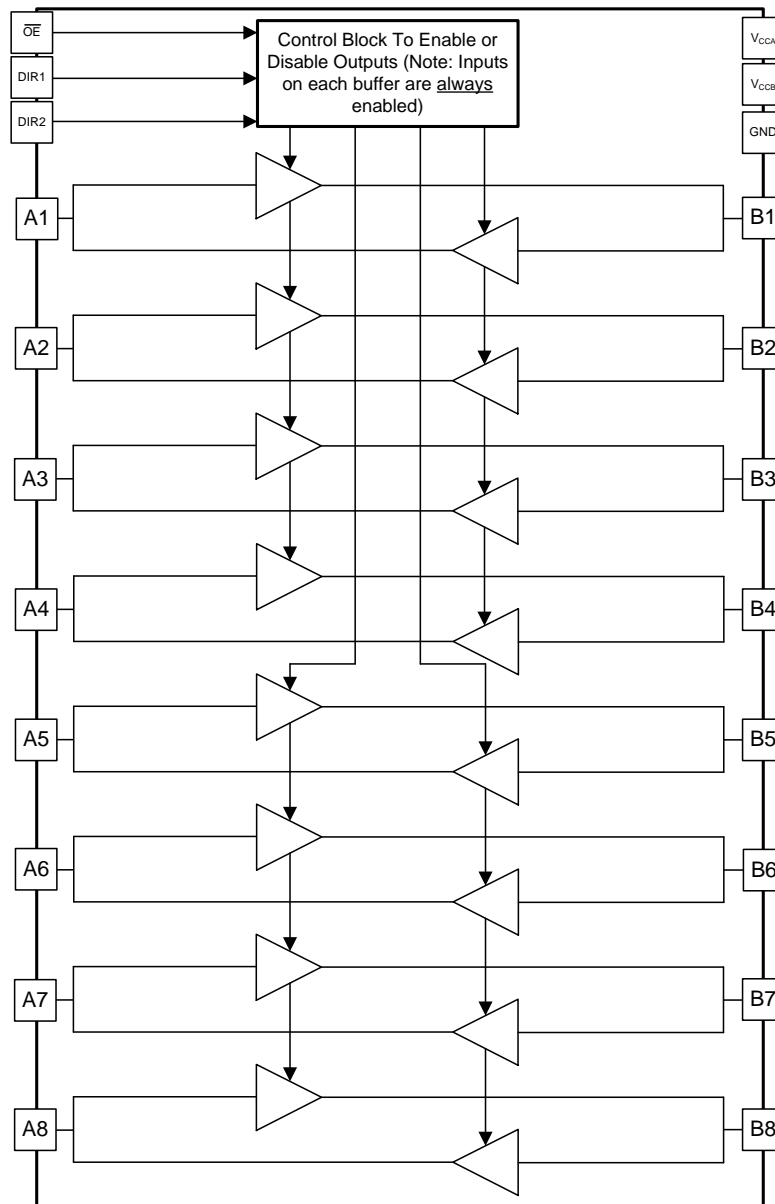


Figure 5. Functional Block Diagram

8.3 Feature Description

8.3.1 Up-Translation and Down-Translation From 0.65 V to 3.6 V

Both supply pins are configurable over the full 0.65 V to 3.6 V voltage range, which makes the device suitable for translating between any of the low voltage nodes (0.7 V, 0.8 V, 0.9 V, 1.2 V, 1.8 V, 2.5 V, and 3.3 V).

8.3.2 Multiple Direction Control Pins

Two control pins are used to configure the 8 data I/Os. I/O channels 1 through 4 are grouped together and I/O channels 5 through 8 are banked together. The benefit of this is to permit simultaneous up-translation and down-translation within one device. This eliminates the need for multiple devices, where each device can only provide up-translation or down-translation sequentially. Simultaneous up and down translation is supported when both V_{CCA} and V_{CCB} are at least 1.40 V.

8.3.3 Bus-Hold Circuitry

Active bus-hold circuitry holds unused or undriven data inputs at a valid logic state, which helps with board space savings and reduced component costs. Use of pull-up or pull-down resistors with the bus-hold circuitry is not recommended. See the Bus-Hold Circuit application note for more details. ([SCLA015](#)).

Note that the bus-hold circuitry always remains active when the corresponding supply is present (i.e. B port bus-hold circuits are active when V_{CCB} is present, and A port bus-hold circuits are active when V_{CCA} is present). The bus hold circuitry is also active even when the device is in a partial power down state or when the output enable pin is used to place all outputs into high impedance.

8.3.4 I_{off} Supports Partial-Power-Down Mode Operation

This feature is to limit the leakage current of an I/O pin being driven to a voltage as large as 3.6 V while having its corresponding power supply rail powered down. This is represented by the I_{off} parameter in the [Electrical Characteristics](#) table.

8.4 Device Functional Modes

All control inputs are referenced to V_{CCA} and must be driven to a valid Logic High or Logic Low (that is, not floating) to assure proper device operation and to prevent excessive power consumption. [Table 1](#) summarizes the possible modes of device operation based on the configuration of the control inputs.

Table 1. Function Table⁽¹⁾

CONTROL INPUTS			Signal Direction	
\overline{OE}	DIR1	DIR2	Bits 1:4	Bits 5:8
H	X	X	Disabled (Hi-Z)	
L	L	L	B to A	
L	L	H	B to A	A to B
L	H	L	A to B	
L	H	H	A to B	B to A

(1) Input circuits of the data I/Os are always active and must be driven to a valid logic level.

9 Application and Implementation

NOTE

Information in the following applications sections is not part of the TI component specification, and TI does not warrant its accuracy or completeness. TI's customers are responsible for determining suitability of components for their purposes. Customers should validate and test their design implementation to confirm system functionality.

9.1 Application Information

The SN74AXCH8T245 device can be used in level-translation applications for interfacing devices or systems operating at different voltage nodes. [Figure 6](#) depicts an application in which the SN74AXCH8T245 device is up-translating a 0.7 V input to a 3.3 V output to interface between a system controller and a peripheral device.

9.2 Typical Application

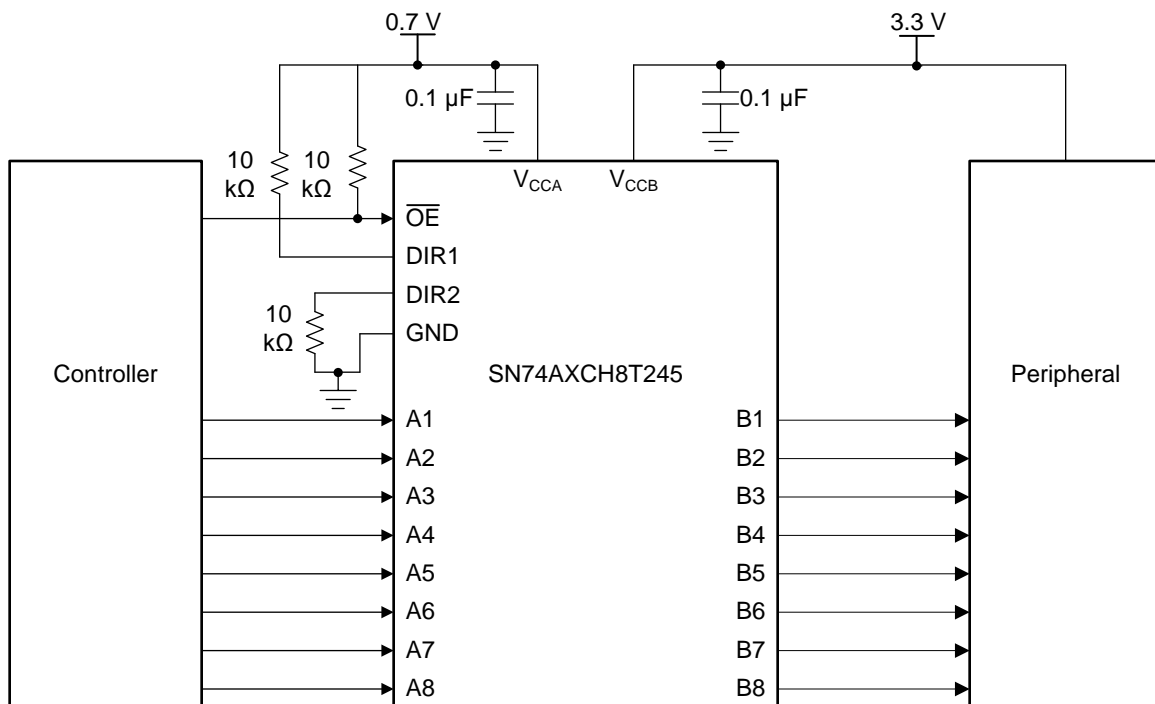


Figure 6. Typical Application Schematic

Typical Application (continued)

9.2.1 Design Requirements

For this design example, use the parameters listed in [Table 2](#).

Table 2. Design Parameters

DESIGN PARAMETERS	EXAMPLE VALUE
Input voltage range	0.65 V to 3.6 V
Output voltage range	0.65 V to 3.6 V

9.2.2 Detailed Design Procedure

To begin the design process, determine the following:

- Input voltage range
 - Use the supply voltage of the device that is driving the SN74AXCH8T245 device to determine the input voltage range. For a valid logic high the value must exceed the V_{IH} of the input port. For a valid logic low the value must be less than the V_{IL} of the input port.
- Output voltage range
 - Use the supply voltage of the device that the SN74AXCH8T245 device is driving to determine the output voltage range.

9.2.3 Application Curve

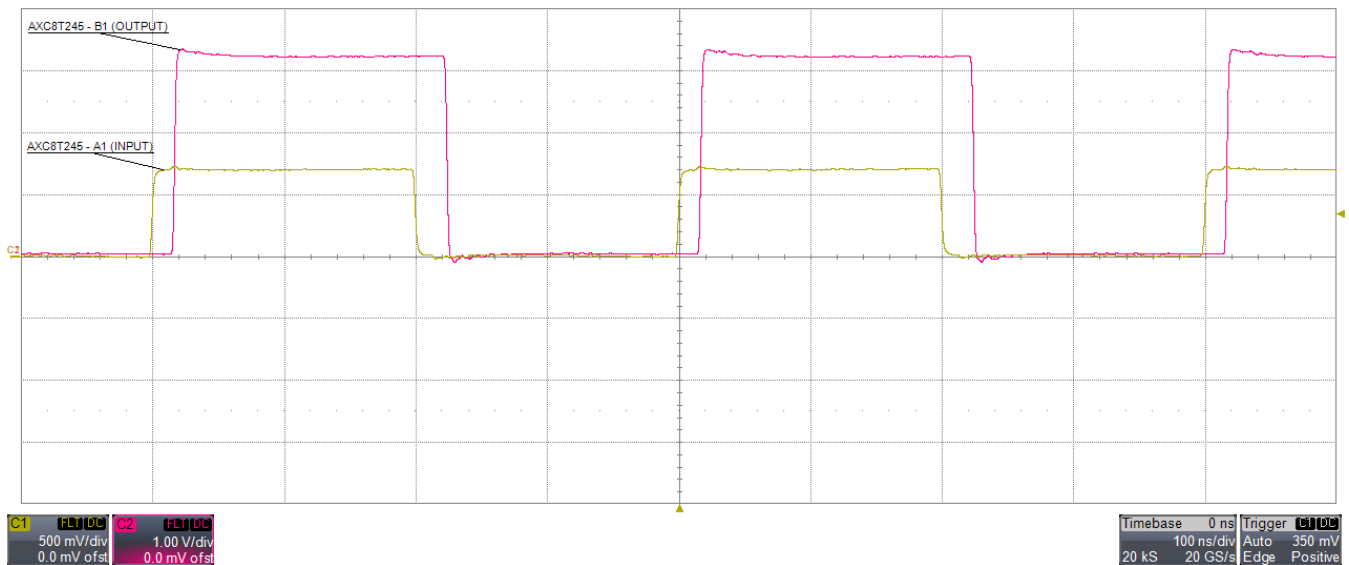


Figure 7. Translation Up (0.7 V to 3.3 V) at 2.5 MHz

10 Power Supply Recommendations

Always apply a ground reference to the GND pins first. However, there are no additional requirements for power supply sequencing.

This device was designed with various power supply sequencing methods in mind to help prevent unintended triggering of downstream devices. For more information regarding the power up glitch performance of the AXC family of level translators, see the [Power Sequencing for AXC Family of Devices](#) application report.

11 Layout

11.1 Layout Guidelines

To assure reliability of the device, follow common printed-circuit board layout guidelines.

- Use bypass capacitors on power supplies.
- Use short trace lengths to avoid excessive loading.
- Place pads on the signal paths for loading capacitors or pullup resistors to help adjust rise and fall times of signals depending on the system requirements.

11.2 Layout Example

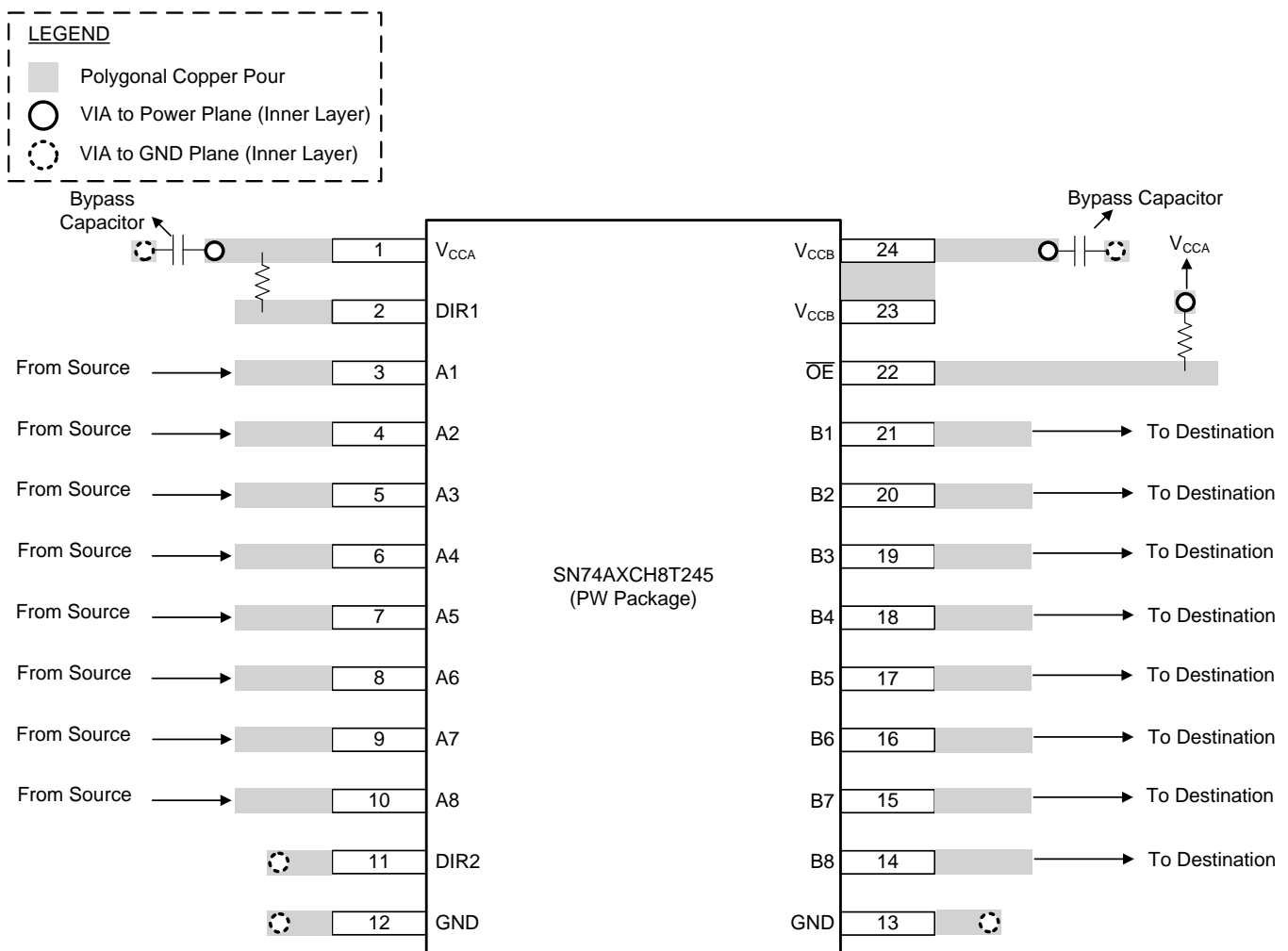


Figure 8. SN74AXCH8T245 Device Layout Example

12 Device and Documentation Support

12.1 Documentation Support

12.1.1 Related Documentation

For related documentation see the following:

- Texas Instruments, [Implications of Slow or Floating CMOS Inputs](#) application report
- Texas Instruments, [Power Sequencing for AXC Family of Devices](#) application report

12.2 Receiving Notification of Documentation Updates

To receive notification of documentation updates, navigate to the device product folder on ti.com. In the upper right corner, click on *Alert me* to register and receive a weekly digest of any product information that has changed. For change details, review the revision history included in any revised document.

12.3 Community Resources

The following links connect to TI community resources. Linked contents are provided "AS IS" by the respective contributors. They do not constitute TI specifications and do not necessarily reflect TI's views; see TI's [Terms of Use](#).

TI E2E™ Online Community *TI's Engineer-to-Engineer (E2E) Community*. Created to foster collaboration among engineers. At e2e.ti.com, you can ask questions, share knowledge, explore ideas and help solve problems with fellow engineers.

Design Support *TI's Design Support* Quickly find helpful E2E forums along with design support tools and contact information for technical support.

12.4 Trademarks

E2E is a trademark of Texas Instruments.

12.5 Electrostatic Discharge Caution



This integrated circuit can be damaged by ESD. Texas Instruments recommends that all integrated circuits be handled with appropriate precautions. Failure to observe proper handling and installation procedures can cause damage.

ESD damage can range from subtle performance degradation to complete device failure. Precision integrated circuits may be more susceptible to damage because very small parametric changes could cause the device not to meet its published specifications.

12.6 Glossary

[SLYZ022](#) — *TI Glossary*.

This glossary lists and explains terms, acronyms, and definitions.

13 Mechanical, Packaging, and Orderable Information

The following pages include mechanical, packaging, and orderable information. This information is the most current data available for the designated devices. This data is subject to change without notice and revision of this document. For browser-based versions of this data sheet, refer to the left-hand navigation.

PACKAGING INFORMATION

Orderable Device	Status (1)	Package Type	Package Drawing	Pins	Package Qty	Eco Plan (2)	Lead finish/ Ball material (6)	MSL Peak Temp (3)	Op Temp (°C)	Device Marking (4/5)	Samples
SN74AXCH8T245PWR	ACTIVE	TSSOP	PW	24	2000	RoHS & Green	NIPDAU	Level-1-260C-UNLIM	-40 to 125	AH8T245	Samples
SN74AXCH8T245RHLR	ACTIVE	VQFN	RHL	24	3000	RoHS & Green	NIPDAU	Level-1-260C-UNLIM	-40 to 125	AH8T245	Samples

(1) The marketing status values are defined as follows:

ACTIVE: Product device recommended for new designs.

LIFEBUY: TI has announced that the device will be discontinued, and a lifetime-buy period is in effect.

NRND: Not recommended for new designs. Device is in production to support existing customers, but TI does not recommend using this part in a new design.

PREVIEW: Device has been announced but is not in production. Samples may or may not be available.

OBsolete: TI has discontinued the production of the device.

(2) **RoHS:** TI defines "RoHS" to mean semiconductor products that are compliant with the current EU RoHS requirements for all 10 RoHS substances, including the requirement that RoHS substance do not exceed 0.1% by weight in homogeneous materials. Where designed to be soldered at high temperatures, "RoHS" products are suitable for use in specified lead-free processes. TI may reference these types of products as "Pb-Free".

RoHS Exempt: TI defines "RoHS Exempt" to mean products that contain lead but are compliant with EU RoHS pursuant to a specific EU RoHS exemption.

Green: TI defines "Green" to mean the content of Chlorine (Cl) and Bromine (Br) based flame retardants meet JS709B low halogen requirements of <=1000ppm threshold. Antimony trioxide based flame retardants must also meet the <=1000ppm threshold requirement.

(3) MSL, Peak Temp. - The Moisture Sensitivity Level rating according to the JEDEC industry standard classifications, and peak solder temperature.

(4) There may be additional marking, which relates to the logo, the lot trace code information, or the environmental category on the device.

(5) Multiple Device Markings will be inside parentheses. Only one Device Marking contained in parentheses and separated by a "~" will appear on a device. If a line is indented then it is a continuation of the previous line and the two combined represent the entire Device Marking for that device.

(6) Lead finish/Ball material - Orderable Devices may have multiple material finish options. Finish options are separated by a vertical ruled line. Lead finish/Ball material values may wrap to two lines if the finish value exceeds the maximum column width.

Important Information and Disclaimer:The information provided on this page represents TI's knowledge and belief as of the date that it is provided. TI bases its knowledge and belief on information provided by third parties, and makes no representation or warranty as to the accuracy of such information. Efforts are underway to better integrate information from third parties. TI has taken and continues to take reasonable steps to provide representative and accurate information but may not have conducted destructive testing or chemical analysis on incoming materials and chemicals. TI and TI suppliers consider certain information to be proprietary, and thus CAS numbers and other limited information may not be available for release.

In no event shall TI's liability arising out of such information exceed the total purchase price of the TI part(s) at issue in this document sold by TI to Customer on an annual basis.

TAPE AND REEL INFORMATION

QUADRANT ASSIGNMENTS FOR PIN 1 ORIENTATION IN TAPE


*All dimensions are nominal

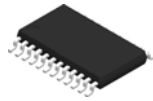
Device	Package Type	Package Drawing	Pins	SPQ	Reel Diameter (mm)	Reel Width W1 (mm)	A0 (mm)	B0 (mm)	K0 (mm)	P1 (mm)	W (mm)	Pin1 Quadrant
SN74AXCH8T245PWR	TSSOP	PW	24	2000	330.0	16.4	6.95	8.3	1.6	8.0	16.0	Q1
SN74AXCH8T245RHLR	VQFN	RHL	24	3000	330.0	12.4	3.8	5.8	1.2	8.0	12.0	Q1

TAPE AND REEL BOX DIMENSIONS


*All dimensions are nominal

Device	Package Type	Package Drawing	Pins	SPQ	Length (mm)	Width (mm)	Height (mm)
SN74AXCH8T245PWR	TSSOP	PW	24	2000	356.0	356.0	35.0
SN74AXCH8T245RHLR	VQFN	RHL	24	3000	367.0	367.0	35.0

PW0024A



PACKAGE OUTLINE

TSSOP - 1.2 mm max height

SMALL OUTLINE PACKAGE



4220208/A 02/2017

NOTES:

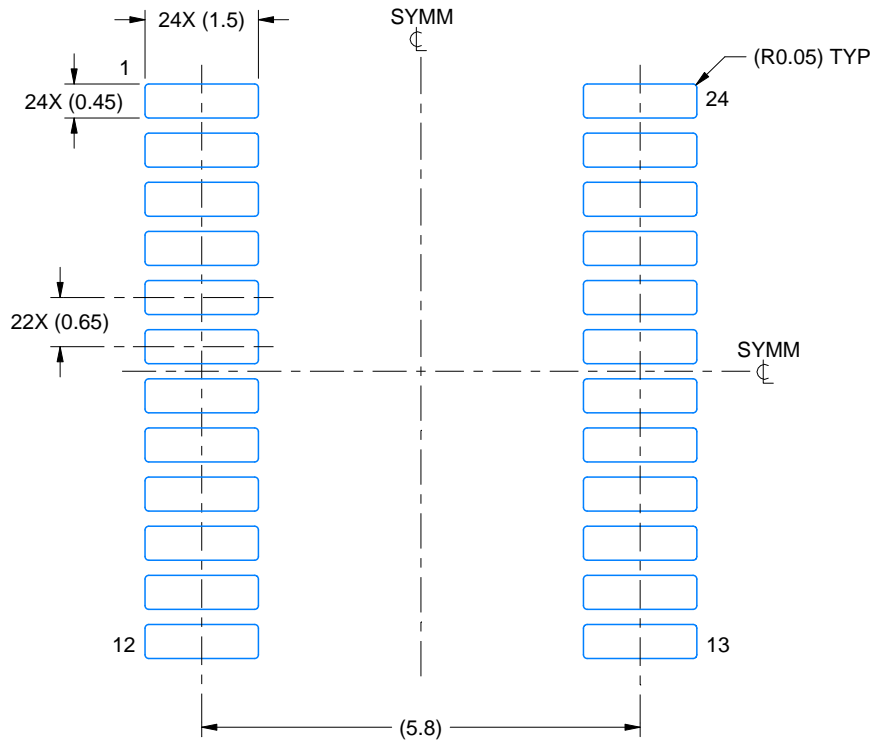
1. All linear dimensions are in millimeters. Any dimensions in parenthesis are for reference only. Dimensioning and tolerancing per ASME Y14.5M.
2. This drawing is subject to change without notice.
3. This dimension does not include mold flash, protrusions, or gate burrs. Mold flash, protrusions, or gate burrs shall not exceed 0.15 mm per side.
4. This dimension does not include interlead flash. Interlead flash shall not exceed 0.25 mm per side.
5. Reference JEDEC registration MO-153.

EXAMPLE BOARD LAYOUT

PW0024A

TSSOP - 1.2 mm max height

SMALL OUTLINE PACKAGE



LAND PATTERN EXAMPLE
EXPOSED METAL SHOWN
SCALE: 10X



SOLDER MASK DETAILS

4220208/A 02/2017

NOTES: (continued)

6. Publication IPC-7351 may have alternate designs.
7. Solder mask tolerances between and around signal pads can vary based on board fabrication site.

EXAMPLE STENCIL DESIGN

PW0024A

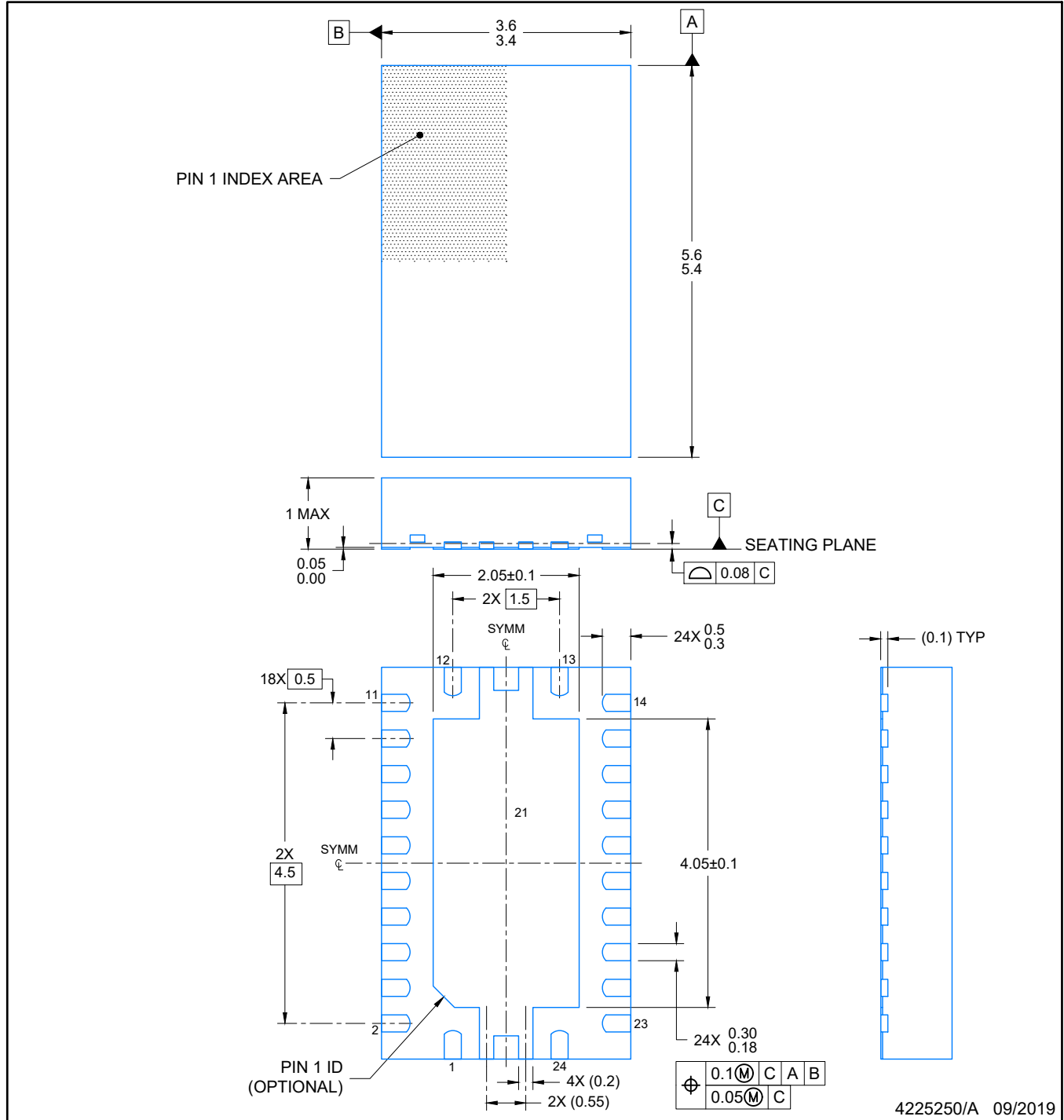
TSSOP - 1.2 mm max height

SMALL OUTLINE PACKAGE



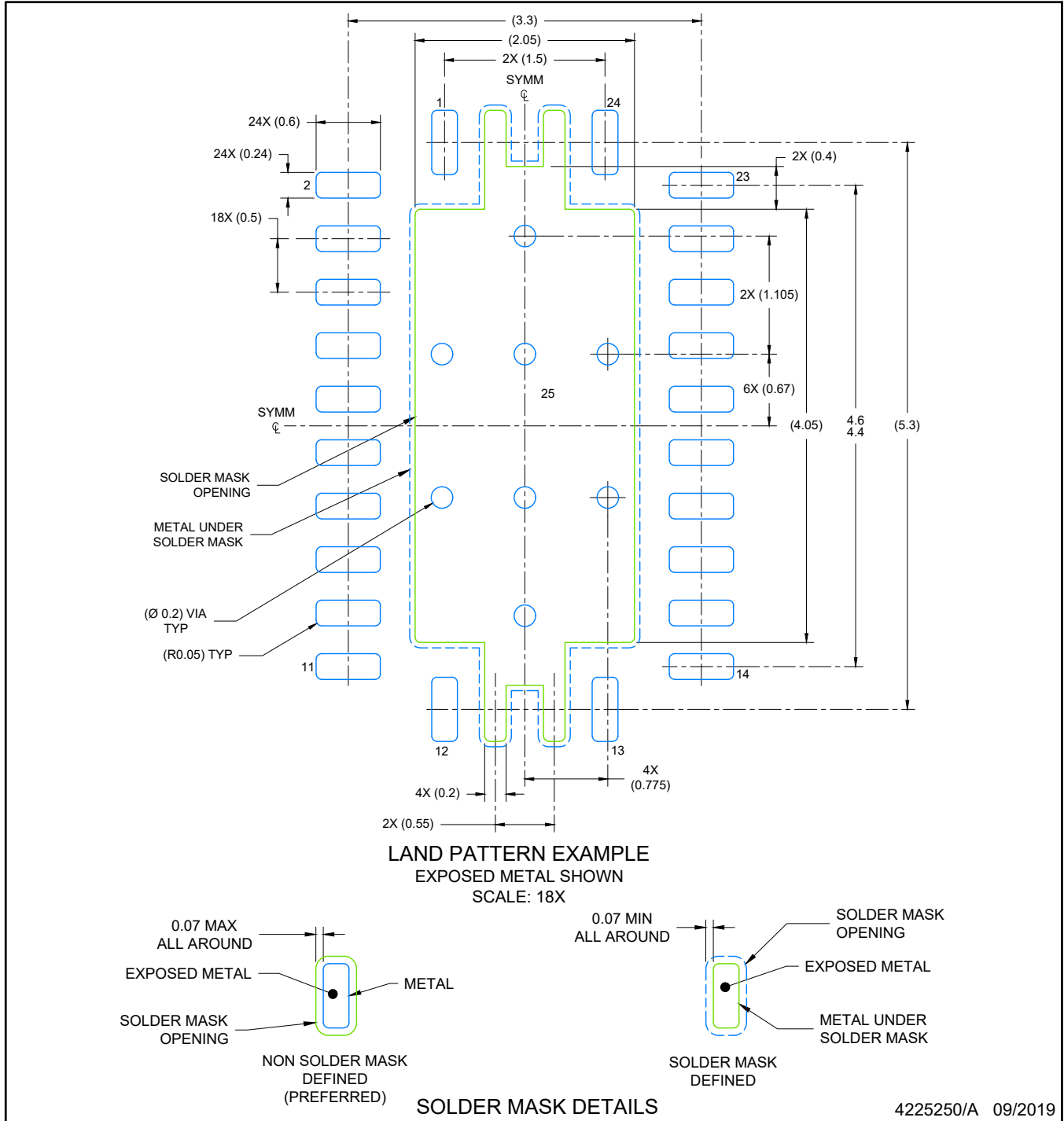
NOTES: (continued)

8. Laser cutting apertures with trapezoidal walls and rounded corners may offer better paste release. IPC-7525 may have alternate design recommendations.
9. Board assembly site may have different recommendations for stencil design.



NOTES:

1. All linear dimensions are in millimeters. Any dimensions in parenthesis are for reference only. Dimensioning and tolerancing per ASME Y14.5M.
2. This drawing is subject to change without notice.
3. The package thermal pad must be soldered to the printed circuit board for optimal thermal and mechanical performance.



NOTES: (continued)

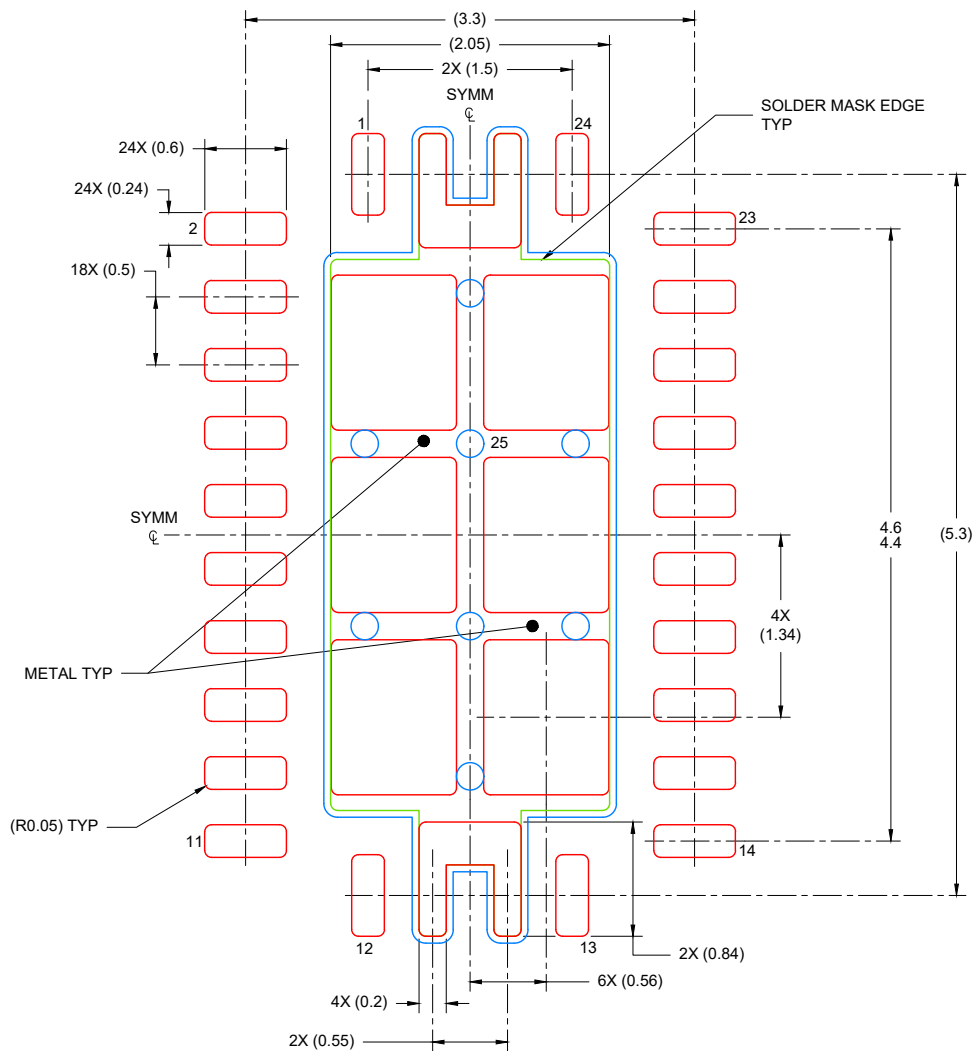
4. This package is designed to be soldered to a thermal pad on the board. For more information, see Texas Instruments literature number SLUA271 (www.ti.com/lit/sluea271).
5. Vias are optional depending on application, refer to device data sheet. If any vias are implemented, refer to their locations shown on this view. It is recommended that vias under paste be filled, plugged or tented.

EXAMPLE STENCIL DESIGN

RHL0024A

VQFN - 1 mm max height

PLASTIC QUAD FLATPACK- NO LEAD



SOLDER PASTE EXAMPLE
 BASED ON 0.125 mm THICK STENCIL

EXPOSED PAD
 80% PRINTED COVERAGE BY AREA
 SCALE: 18X

4225250/A 09/2019

NOTES: (continued)

6. Laser cutting apertures with trapezoidal walls and rounded corners may offer better paste release. IPC-7525 may have alternate design recommendations.

IMPORTANT NOTICE AND DISCLAIMER

TI PROVIDES TECHNICAL AND RELIABILITY DATA (INCLUDING DATA SHEETS), DESIGN RESOURCES (INCLUDING REFERENCE DESIGNS), APPLICATION OR OTHER DESIGN ADVICE, WEB TOOLS, SAFETY INFORMATION, AND OTHER RESOURCES "AS IS" AND WITH ALL FAULTS, AND DISCLAIMS ALL WARRANTIES, EXPRESS AND IMPLIED, INCLUDING WITHOUT LIMITATION ANY IMPLIED WARRANTIES OF MERCHANTABILITY, FITNESS FOR A PARTICULAR PURPOSE OR NON-INFRINGEMENT OF THIRD PARTY INTELLECTUAL PROPERTY RIGHTS.

These resources are intended for skilled developers designing with TI products. You are solely responsible for (1) selecting the appropriate TI products for your application, (2) designing, validating and testing your application, and (3) ensuring your application meets applicable standards, and any other safety, security, regulatory or other requirements.

These resources are subject to change without notice. TI grants you permission to use these resources only for development of an application that uses the TI products described in the resource. Other reproduction and display of these resources is prohibited. No license is granted to any other TI intellectual property right or to any third party intellectual property right. TI disclaims responsibility for, and you will fully indemnify TI and its representatives against, any claims, damages, costs, losses, and liabilities arising out of your use of these resources.

TI's products are provided subject to [TI's Terms of Sale](#) or other applicable terms available either on ti.com or provided in conjunction with such TI products. TI's provision of these resources does not expand or otherwise alter TI's applicable warranties or warranty disclaimers for TI products.

TI objects to and rejects any additional or different terms you may have proposed.

Mailing Address: Texas Instruments, Post Office Box 655303, Dallas, Texas 75265
Copyright © 2022, Texas Instruments Incorporated