

# TPS53313 Step-Down Converter Evaluation Module User's Guide



## Table of Contents

|  |    |
|--|----|
| <b>1 Introduction</b> .....  | 3  |
| <b>2 Description</b> .....   | 3  |
| 2.1 Typical Applications.....  | 3  |
| 2.2 Features.....  | 3  |
| <b>3 Electrical Performance Specifications</b> .....                               | 3  |
| <b>4 Schematic</b> .....   | 4  |
| <b>5 Test Setup</b> .....  | 5  |
| 5.1 Test Equipment.....  | 5  |
| 5.2 Recommended Test Setup.....  | 6  |
| <b>6 Configurations</b> .....  | 7  |
| 6.1 Mode and Soft-Start Time Selection.....  | 7  |
| 6.2 Overcurrent Protection (OCP) Selection.....                                    | 7  |
| 6.3 Enable Selection.....  | 7  |
| 6.4 Switching Frequency Selection or External Clock Input for Synchronization..... | 7  |
| <b>7 Test Procedure</b> .....  | 8  |
| 7.1 Line/Load Regulation and Efficiency Measurement Procedure.....                 | 8  |
| 7.2 Control Loop Gain and Phase Measurement Procedure.....                         | 8  |
| 7.3 List of Test Points.....   | 8  |
| 7.4 Equipment Shutdown.....  | 8  |
| <b>8 Performance Data and Typical Characteristic Curves</b> .....                  | 9  |
| 8.1 Efficiency.....  | 9  |
| 8.2 Load Regulation.....   | 9  |
| 8.3 Line Regulation.....   | 10 |
| 8.4 Output Transient.....  | 11 |
| 8.5 Output Ripple.....   | 12 |
| 8.6 Switching Node.....  | 13 |
| 8.7 Start Up.....  | 14 |
| 8.8 Shut Down.....   | 15 |
| 8.9 Over-Current Protection.....   | 15 |
| 8.10 Synchronization.....  | 16 |
| 8.11 Bode Plot.....  | 16 |
| 8.12 Thermal Image.....  | 17 |
| <b>9 EVM Assembly Drawing and PCB Layout</b> .....                                 | 18 |
| <b>10 List of Materials</b> .....  | 21 |
| <b>11 Revision History</b> .....   | 22 |

## List of Figures

|  |    |
|--|----|
| Figure 4-1. TPS53313EVM-078 Schematic.....   | 4  |
| Figure 5-1. Tip and Barrel Measurement for VOUT Ripple.....  | 5  |
| Figure 5-2. TPS53313EVM-078 Recommended Test Set Up.....   | 6  |
| Figure 8-1. Efficiency.....  | 9  |
| Figure 8-2. Load Regulation.....   | 9  |
| Figure 8-3. Line Regulation.....   | 10 |
| Figure 8-4. Output Load 0-A to 3-A Transient Under FCCM Mode (12-V VIN, 1.2-V VOUT, $f_{SW} = 600$ kHz)..... | 11 |
| Figure 8-5. Output Load 0-A to 3-A Transient Under Skip Mode (12-V VIN, 1.2-V VOUT, $f_{SW} = 600$ kHz)..... | 11 |
| Figure 8-6. Output Ripple at No Load (12-V VIN, 1.2-V VOUT, 0-A, Skip Mode, $f_{SW} = 600$ kHz).....         | 12 |
| Figure 8-7. Output Ripple at Full Load (12-V VIN, 1.2-V VOUT, 6-A, Skip Mode, $f_{SW} = 600$ kHz).....       | 12 |
| Figure 8-8. Switching Node at No Load (12-V VIN, 1.0-V VOUT, 0-A, Skip Mode, $f_{SW} = 600$ kHz).....        | 13 |
| Figure 8-9. Switching Node at Full Load (12-V VIN, 1.2-V VOUT, 6-A, Skip Mode, $f_{SW} = 600$ kHz).....      | 13 |

|   |    |
|---|----|
| Figure 8-10. Start-Up Waveform (12-V VIN, 1.2-V VOUT, 6-A IOUT, 1-ms SS).....   | 14 |
| Figure 8-11. Pre-bias Start-Up Waveform (12-V VIN, 1.2-V VOUT, 0-A IOUT, 1-ms SS).....  | 14 |
| Figure 8-12. Shut-Down Waveform (12-V VIN, 1.2-V VOUT, 0-A IOUT).....   | 15 |
| Figure 8-13. Over-Current Protection Waveform ( 12-V VIN, 1.2-V VOUT, IOUT increases from 6 A to 7.8 A).....                            | 15 |
| Figure 8-14. Synchronization Waveform (12-V VIN, 1.2-V VOUT, 0-A IOUT, free-running frequency = 600 kHz, SYNC frequency = 750 kHz)..... | 16 |
| Figure 8-15. Loop Gain (12-V VIN, 1.2-V VOUT, 6-A IOUT, Skip Mode, $f_{SW} = 600$ kHz).....   | 16 |
| Figure 8-16. Thermal Image (12-V VIN, 1.2-V VOUT, 6-A IOUT, FCCM Mode, $f_{SW} = 600$ kHz).....   | 17 |
| Figure 8-17. Thermal Image (12-V VIN, 1.2-V VOUT, 6-A IOUT, FCCM Mode, $f_{SW} = 1.00$ MHz).....  | 17 |
| Figure 9-1. TPS53313EVM-078 Top Layer Assembly Drawing (top view).....  | 18 |
| Figure 9-2. TPS53313EVM-078 Bottom Assembly Drawing (bottom view).....  | 18 |
| Figure 9-3. TPS53313EVM-078 Top Copper (top view).....  | 19 |
| Figure 9-4. TPS53313EVM-078 Layer 2 (top view).....   | 19 |
| Figure 9-5. TPS53313EVM-078 Layer 3 (top view).....   | 20 |
| Figure 9-6. TPS53313EVM-078 Bottom Layer (top view).....  | 20 |

### List of Tables

|   |    |
|---|----|
| Table 3-1. TPS53313EVM-078 Electrical Performance Specifications <sup>(1)</sup> ..... | 3  |
| Table 6-1. MODE Selection.....  | 7  |
| Table 6-2. OCP Selection.....   | 7  |
| Table 6-3. Switching Frequency Selection.....   | 7  |
| Table 7-1. Test Point Functions.....  | 8  |
| Table 10-1. TPS53313EVM-078 List of Materials.....                                    | 21 |

## 1 Introduction

The TPS53313EVM-078 evaluation module (EVM) is a step-down regulator featuring the TPS53313. The TPS53313 is a fully integrated step-down regulator employing voltage mode control.

## 2 Description

The TPS53313EVM-078 is designed to use a 12-V voltage rail to produce a regulated 1.2-V output with up to 6-A load current. The TPS53313EVM-078 is designed to demonstrate the TPS53313 in a typical Point-Of-Load (POL) application while providing a number of test points to evaluate the performance of the TPS53313.

### 2.1 Typical Applications

- POL applications for 5-V or 12-V step-down rails

### 2.2 Features

The TPS53313EVM-078 features include:

- Continuous 6-A output current capability
- Support all MLCC output capacitors
- Voltage mode control
- Selectable light-load operation modes (forced continuous conduction mode (FCCM) and skip mode)
- Selectable switching frequency settings (600 kHz and 1.00 MHz)
- Support synchronization to external clock
- Selectable overcurrent threshold
- Soft-stop output discharge during disable
- Overcurrent, overvoltage, undervoltage, and overtemperature protections
- Power-good indication
- Pre-bias output voltage start-up
- Convenient test points for probing critical waveforms

## 3 Electrical Performance Specifications

**Table 3-1. TPS53313EVM-078 Electrical Performance Specifications<sup>(1)</sup>**

| PARAMETER                      | TEST CONDITIONS   | MIN | TYP      | MAX | UNITS            |
|--------------------------------|---|-----|----------|-----|------------------|
| <b>Input Characteristic</b>    |   |     |          |     |                  |
| Voltage range                  | VIN   | 8.0 | 12       | 14  | V                |
| Maximum input current          | VIN = 12 V  |     | 0.8      |     | A                |
| No load input current          | VIN = 12 V, IOUT = 0 A, f <sub>SW</sub> = 600 kHz under skip mode |     | 8.0      |     | mA               |
| <b>Output Characteristics</b>  |   |     |          |     |                  |
| Output voltage                 |   |     | 1.2      |     | V                |
| Output voltage regulation      | Setpoint accuracy, (VIN = 8.0 V – 14 V, IOUT = 0 A – 6 A)         | -1% |          | 1%  |                  |
|                                | Line regulation, (VIN = 8.0 V – 14 V, IOUT = 6 A)                 |     | 0.1%     |     |                  |
|                                | Load regulation, (VIN = 12 V, IOUT = 0 A – 6 A)                   |     | 0.2%     |     |                  |
| Output voltage ripple          | VIN = 12 V, IOUT = 6 A  |     | 10       |     | mV <sub>PP</sub> |
| Output load current            |   | 0   |          | 6.0 | A                |
| Over current limit (peak)      | VIN = 12 V  |     | 9        |     |                  |
| <b>Systems Characteristics</b> |   |     |          |     |                  |
| Switching frequency            |   |     | 600/1000 |     | kHz              |
| Peak efficiency                | VIN = 12 V, IOUT = 3.0 A, f <sub>SW</sub> = 600 kHz               |     | 85.5%    |     |                  |
| Full load efficiency           | VIN = 12 V, IOUT = 6.0 A, f <sub>SW</sub> = 600 kHz               |     | 82.4%    |     |                  |
| Operating temperature          |   |     | 25       |     | °C               |

(1) Jumpers set to default locations, See section 6 of this user's guide

### 4 Schematic

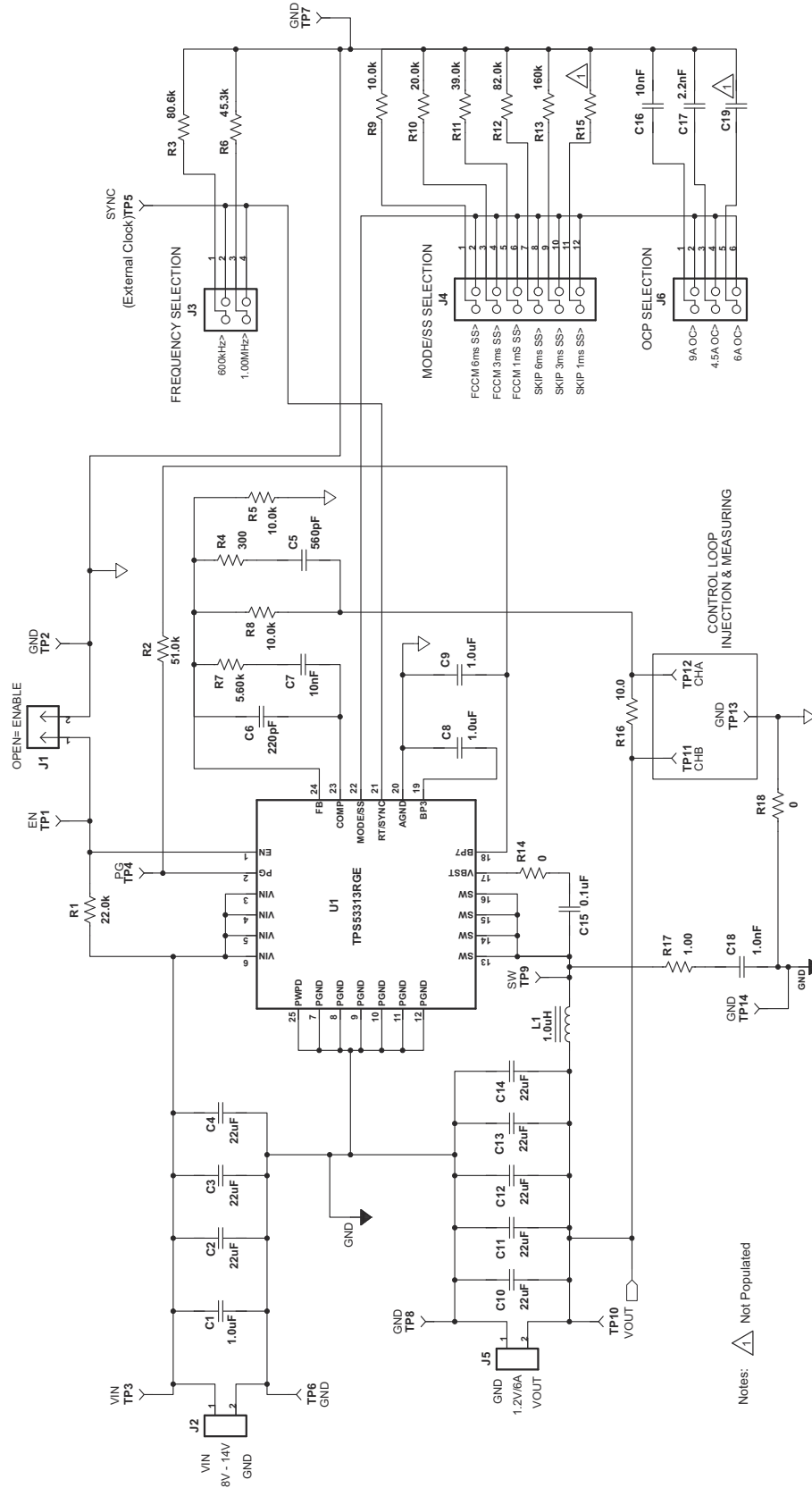



Figure 4-1. TPS53313EVM-078 Schematic

Notes:  Not Populated

## 5 Test Setup

### 5.1 Test Equipment

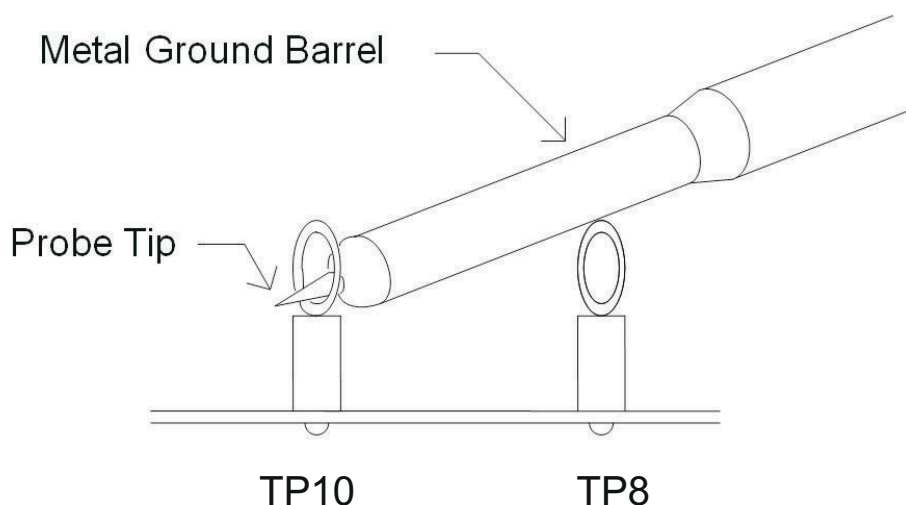
**Voltage Source (VIN):** The input voltage source, (VIN), should be a 0-V to 15-V variable DC source capable of supplying 2 A<sub>DC</sub>. Connect VIN to J2 as shown in [Figure 5-2](#).

**Multimeters:**

- **V1:** VIN at TP3 (VIN) and TP6 (GND), 0-V to 15-V voltmeter
- **V2:** VOUT at TP10 (VOUT) and TP8 (GND)
- **A1:** VIN input current, 0-A<sub>DC</sub> to 2-A<sub>DC</sub> Ammeter

**Output Load:** The output load should be an electronic constant resistance mode load capable of 0 A<sub>DC</sub> to 6 A<sub>DC</sub> at 1.2 V.

**Oscilloscope:** A digital or analog oscilloscope can be used to measure the output ripple. The oscilloscope should be set for 1-M $\Omega$  impedance, 20-MHz bandwidth, AC coupling, 1- $\mu$ s/div. horizontal resolution, 20-mV/div. vertical resolution. Test points TP10 and TP8 can be used to measure the output ripple voltage by placing the oscilloscope probe tip through TP10 and holding the ground barrel on TP8 as shown in [Figure 5-1](#). Using a leaded ground connection may induce additional noise due to the large ground loop.



**Figure 5-1. Tip and Barrel Measurement for VOUT Ripple**

**Fan:** Some of the components in this EVM may approach temperatures of 80°C during operation. A small fan capable of 200 LFM to 400 LFM is recommended to reduce component temperatures while the EVM is operating. The EVM should not be probed while the fan is not running.

**Recommended Wire Gauge:**

- **VIN to J2:** The recommended wire size is 1x AWG #16 per input connection, with the total length of wire less than 4 feet (2 feet input, 2 feet return).
- **J5 to LOAD:** The minimum recommended wire size is 1x AWG #16, with the total length of wire less than 4 feet (2 feet output, 2 feet return).

## 5.2 Recommended Test Setup

Figure 5-2 is the recommended test set up to evaluate the TPS53313EVM-078. Working at an ESD workstation, make sure that any wrist straps, bootstraps or mats are connected referencing the user to earth ground before power is applied to the EVM.

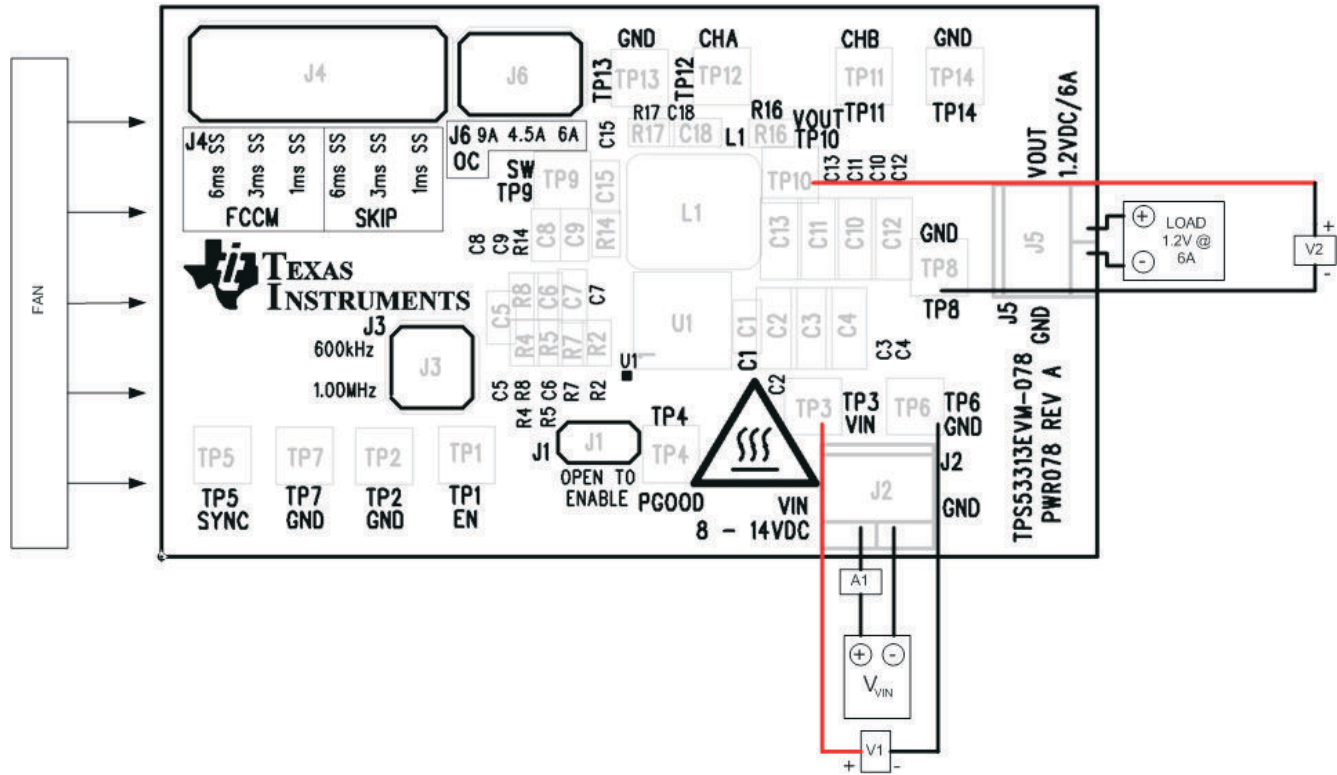


Figure 5-2. TPS53313EVM-078 Recommended Test Set Up

### 5.2.1 Input Connections

- Prior to connecting the DC input source (VIN), it is advisable to limit the source current from VIN to 2 A maximum. Make sure VIN is initially set to 0 V and connected to J2 as shown in Figure 5-2.
- Connect a current meter A1 between VIN and J2 to measure the input current.
- Connect a voltmeter V1 at TP3 (VIN) and TP6 (GND) to measure the input voltage.

### 5.2.2 Output Connections

- Connect Load to J5 and set load to constant resistance mode to sink 0 A<sub>DC</sub> before VIN is applied.
- Connect a voltmeter V2 at TP10 (VOUT) and TP8 (GND) to measure the output voltage.

### 5.2.3 Other Connections

- Place a fan as shown in Figure 5-2 and turn on, making sure air is flowing across the EVM.

## 6 Configurations

All Jumper selections should be made prior to applying power to the EVM. User can configure this EVM per following configurations.

### 6.1 Mode and Soft-Start Time Selection

The operation mode and soft-start time can be set by J4.

#### 6.1.1 Default Setting: Skip Mode, 6-ms SS

**Table 6-1. MODE Selection**

| MODE RESISTANCES | OPERATION MODE | SOFT-START TIME |
|------------------|----------------|-----------------|
| 10.0 kΩ          | FCCM           | 6 ms            |
| 20.0 kΩ          | FCCM           | 3 ms            |
| 39.0 kΩ          | FCCM           | 1 ms            |
| 82.0 kΩ          | Skip           | 6 ms            |
| 160 kΩ           | Skip           | 3 ms            |
| Open             | Skip           | 1 ms            |

### 6.2 Overcurrent Protection (OCP) Selection

The OCP threshold can be set by J6.

#### 6.2.1 Default Setting: 9-A OCP

**Table 6-2. OCP Selection**

| OCP SETTING CAPACITANCE | OVERCURRENT LIMIT |
|-------------------------|-------------------|
| 10 nF                   | 9 A               |
| 2.2 nF                  | 4.5 A             |
| Open                    | 6 A               |

### 6.3 Enable Selection

The converter can be enabled and disabled by J1.

#### 6.3.1 Default Setting: Short to Disable the Converter

### 6.4 Switching Frequency Selection or External Clock Input for Synchronization

The switching frequency can be set by J3. If the external clock is used for synchronization, the external clock should be connected to TP5 (SYNC) and TP7 (GND).

#### 6.4.1 Default setting: 600 kHz

**Table 6-3. Switching Frequency Selection**

| SWITCHING FREQUENCY SETTING RESISTANCES | SWITCHING FREQUENCY |
|---|---------------------|
| 80.6 kΩ                                 | 600 kHz             |
| 45.3 kΩ                                 | 1.00 MHz            |

## 7 Test Procedure

### 7.1 Line/Load Regulation and Efficiency Measurement Procedure

1. Set up EVM as described in [Section 5](#) and [Figure 5-2](#).
2. Ensure Load is set to constant resistance mode and to sink 0 A<sub>DC</sub>.
3. Ensure all jumpers set per [Section 6](#).
4. Increase VIN from 0 V to 12 V. Using V1 to measure VIN voltage.
5. Open jumper J1 to enable the controller.
6. Use V2 to measure VOUT voltage, A1 to measure VIN current.
7. Vary load from 0 A<sub>DC</sub> to 6 A<sub>DC</sub>, VOUT should remain in load regulation.
8. Vary VIN from 8.0 V to 14 V, VOUT should remain in line regulation.
9. Short jumper J1 to disable the controller.
10. Decrease load to 0 A.
11. Decrease VIN to 0 V.

### 7.2 Control Loop Gain and Phase Measurement Procedure

TPS53313EVM-078 contains a 10-Ω series resistor in the feedback loop for loop response analysis.

1. Set up EVM as described in [Section 5](#) and [Figure 5-2](#).
2. Connect isolation transformer to test points marked TP12 and TP11.
3. Connect input signal amplitude measurement probe (channel A) to TP12. Connect output signal amplitude measurement probe (channel B) to TP11.
4. Connect ground lead of channel A and channel B to TP13.
5. Inject around 10-mV or less signal through the isolation transformer.
6. Sweep the frequency from 500 Hz to 500 kHz with 10-Hz or lower post filter. The control loop gain and phase margin can be measured.
7. Disconnect isolation transformer from bode plot test points before making other measurements (Signal injection into feedback may interfere with accuracy of other measurements).

### 7.3 List of Test Points

**Table 7-1. Test Point Functions**

| TEST POINTS | NAME | DESCRIPTION                                 |
|-------------|------|---|
| TP1         | EN   | Enable pin                                  |
| TP2         | GND  | GND   |
| TP3         | VIN  | Input voltage                               |
| TP4         | PG   | Power good output                           |
| TP5         | SYNC | Input of external clock for synchronization |
| TP6         | GND  | GND   |
| TP7         | GND  | GND   |
| TP8         | GND  | GND   |
| TP9         | SW   | Switching node                              |
| TP10        | VOUT | Output voltage                              |
| TP11        | CHB  | Input B for loop injection                  |
| TP12        | CHA  | Input A for loop injection                  |
| TP13        | GND  | GND   |
| TP14        | GND  | GND   |

### 7.4 Equipment Shutdown

1. Shut down VIN
2. Shut down Load
3. Shut down FAN



## 8 Performance Data and Typical Characteristic Curves

Figure 8-1 through Figure 8-17 present typical performance curves for TPS53313EVM-078.

### 8.1 Efficiency

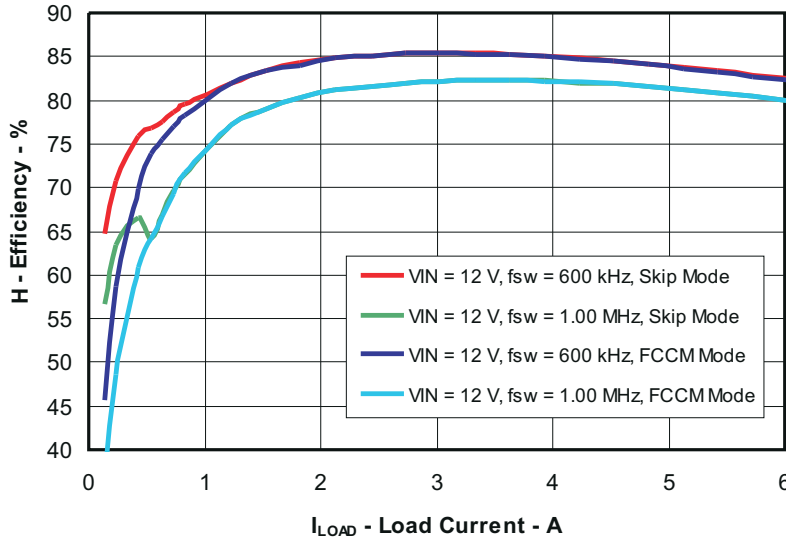


Figure 8-1. Efficiency

### 8.2 Load Regulation

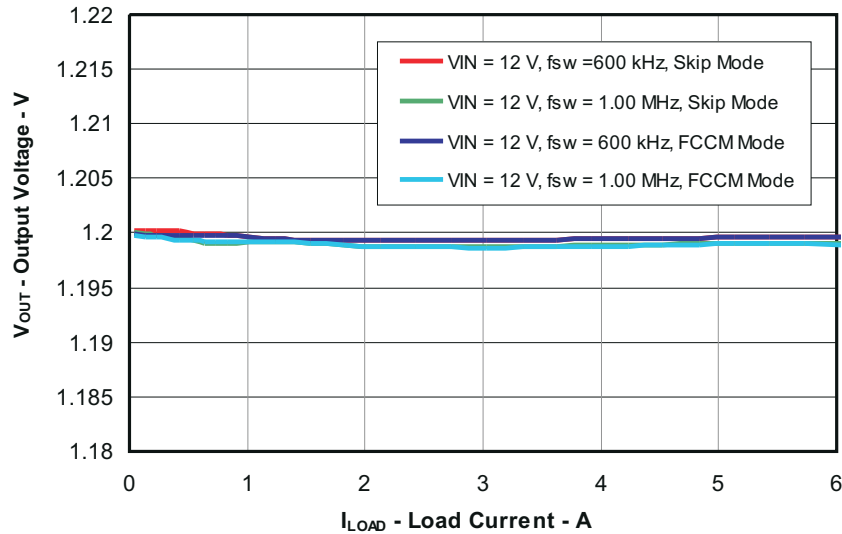


Figure 8-2. Load Regulation

### 8.3 Line Regulation

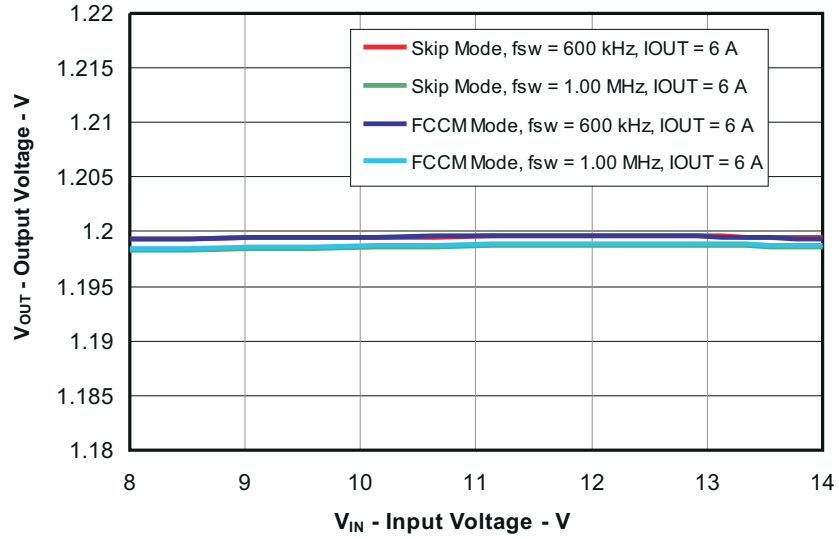


Figure 8-3. Line Regulation

### 8.4 Output Transient

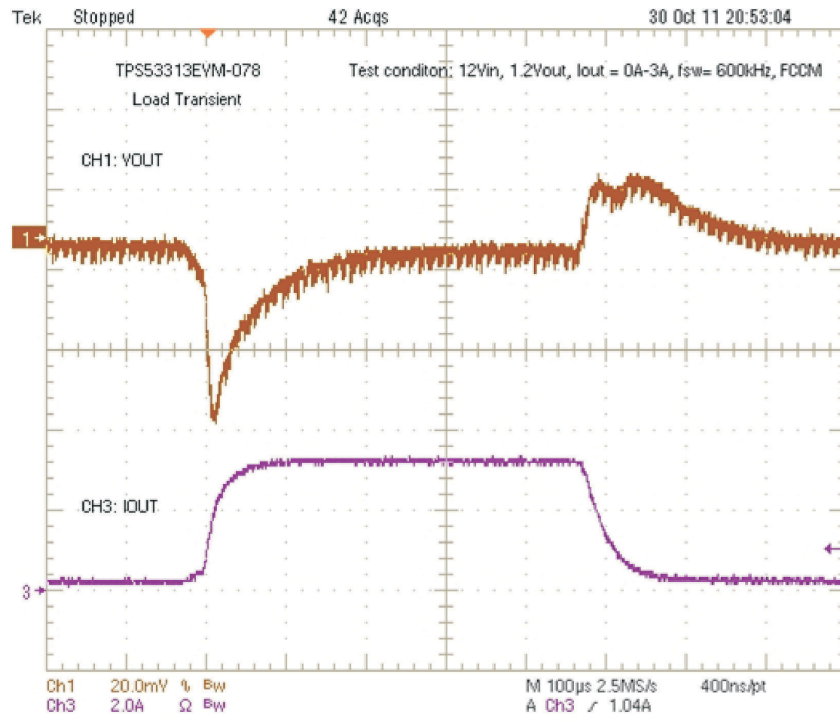


Figure 8-4. Output Load 0-A to 3-A Transient Under FCCM Mode (12-V VIN, 1.2-V VOUT,  $f_{SW} = 600$  kHz)

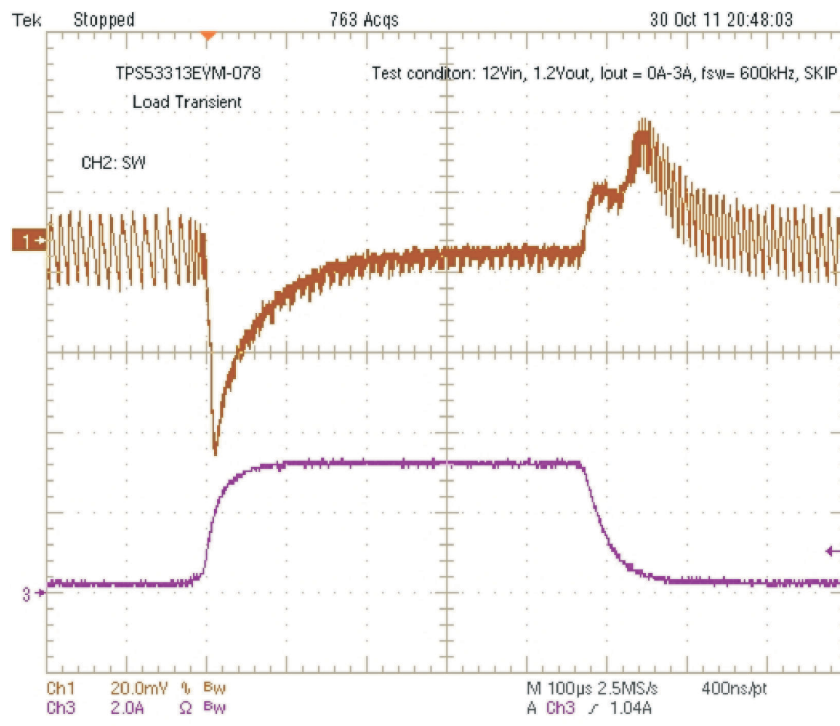


Figure 8-5. Output Load 0-A to 3-A Transient Under Skip Mode (12-V VIN, 1.2-V VOUT,  $f_{SW} = 600$  kHz)

## 8.5 Output Ripple

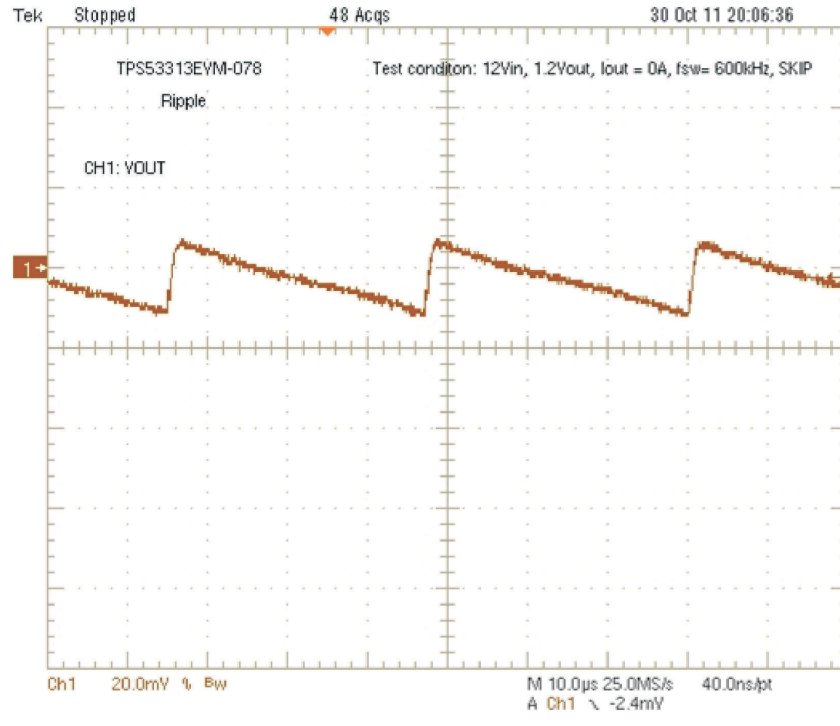


Figure 8-6. Output Ripple at No Load (12-V VIN, 1.2-V VOUT, 0-A, Skip Mode,  $f_{sw} = 600$  kHz)

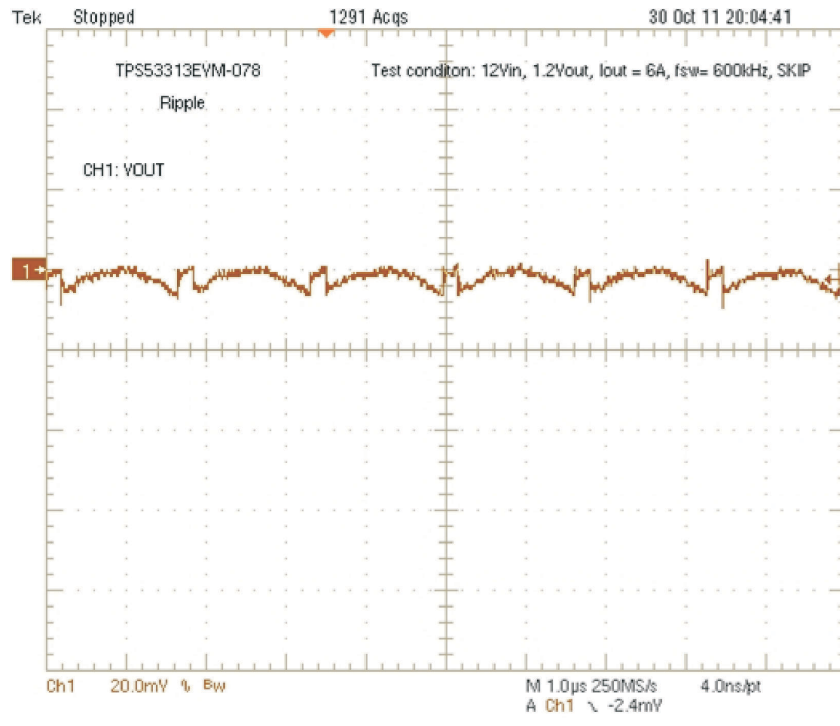


Figure 8-7. Output Ripple at Full Load (12-V VIN, 1.2-V VOUT, 6-A, Skip Mode,  $f_{sw} = 600$  kHz)

## 8.6 Switching Node

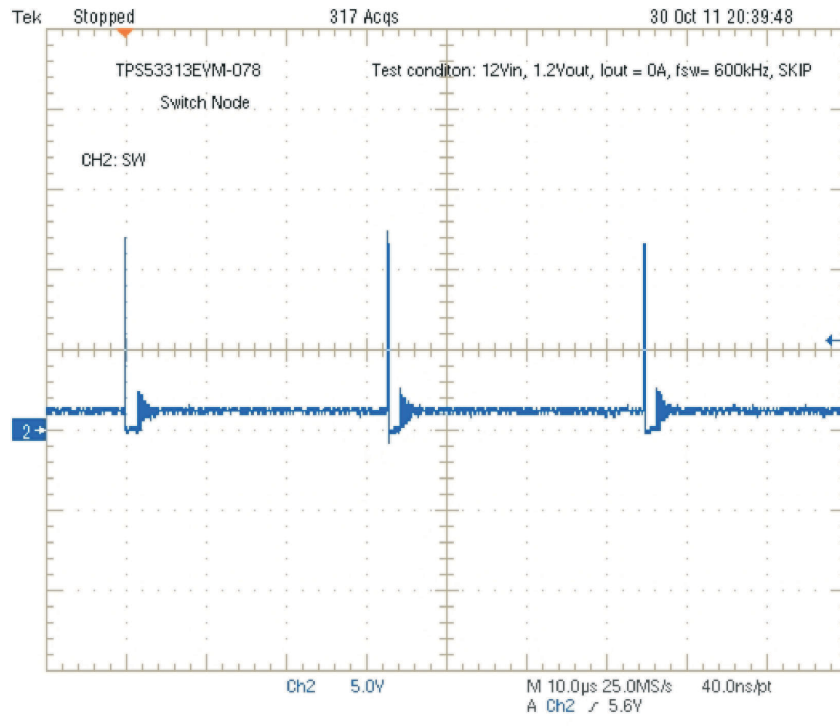


Figure 8-8. Switching Node at No Load (12-V VIN, 1.0-V VOUT, 0-A, Skip Mode,  $f_{sw} = 600$  kHz)

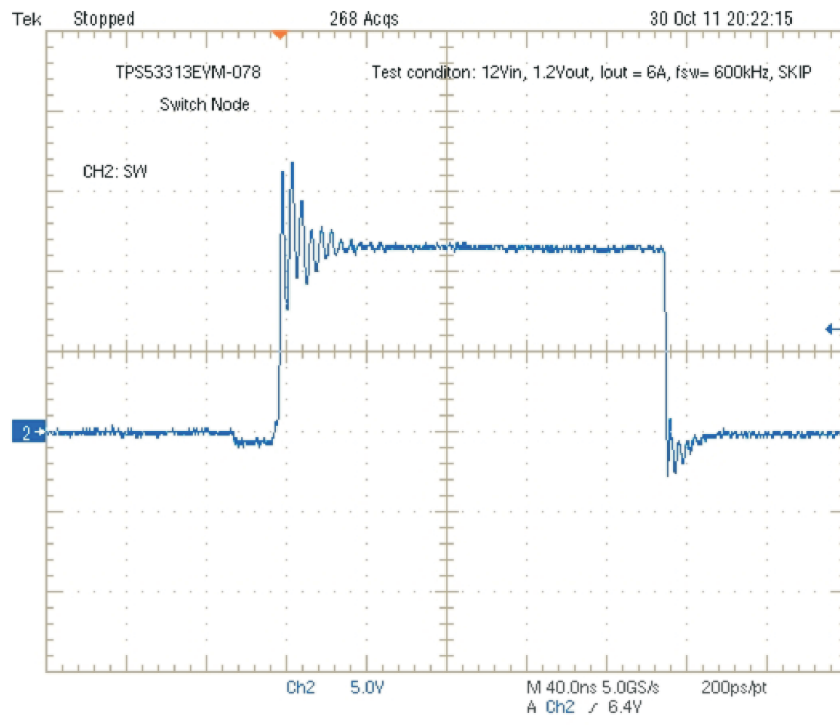
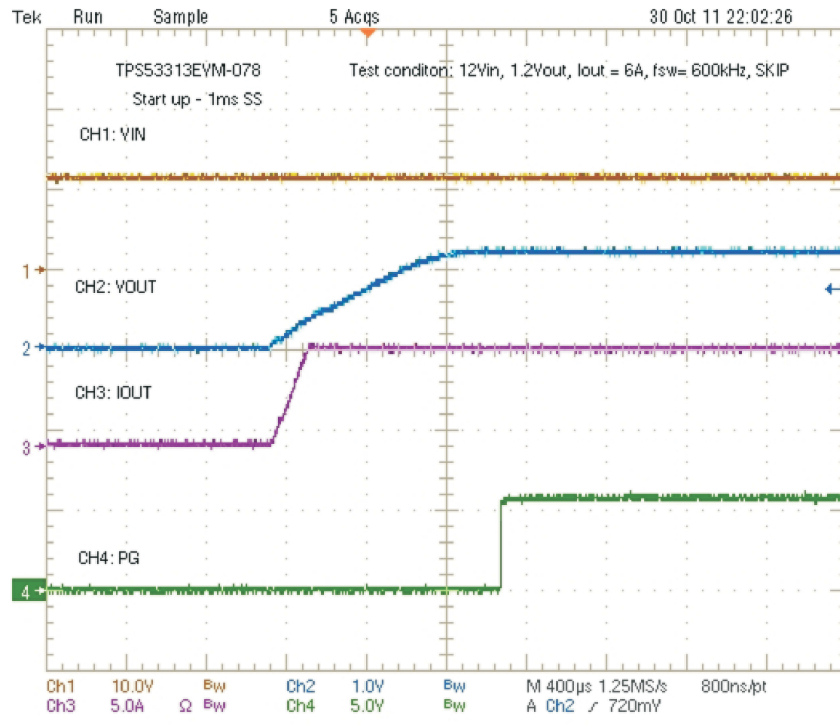
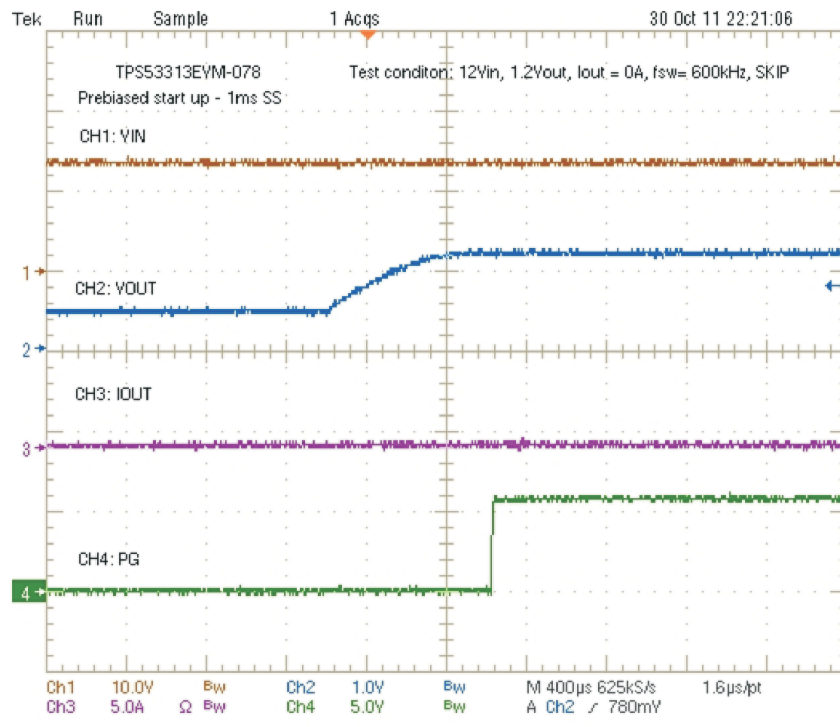


Figure 8-9. Switching Node at Full Load (12-V VIN, 1.2-V VOUT, 6-A, Skip Mode,  $f_{sw} = 600$  kHz)

### 8.7 Start Up



**Figure 8-10. Start-Up Waveform (12-V VIN, 1.2-V VOUT, 6-A IOU, 1-ms SS)**



**Figure 8-11. Pre-bias Start-Up Waveform (12-V VIN, 1.2-V VOUT, 0-A IOU, 1-ms SS)**

### 8.8 Shut Down

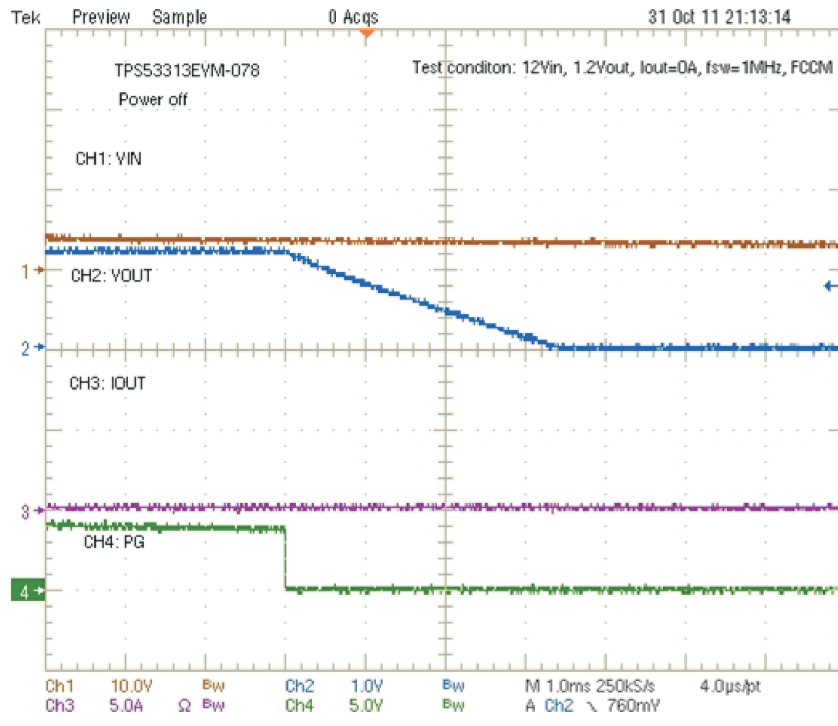


Figure 8-12. Shut-Down Waveform (12-V VIN, 1.2-V VOUT, 0-A IOUT)

### 8.9 Over-Current Protection

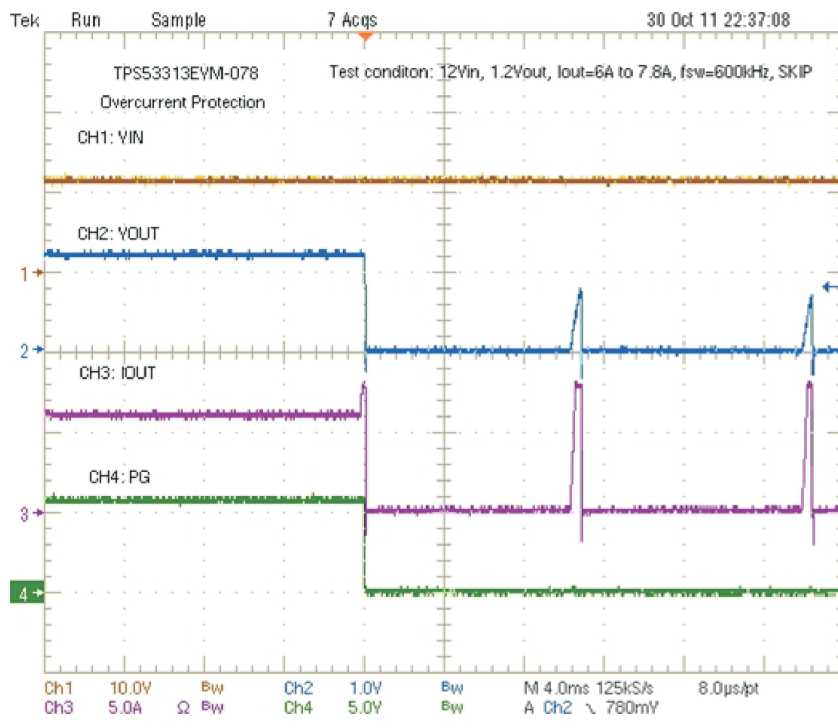


Figure 8-13. Over-Current Protection Waveform ( 12-V VIN, 1.2-V VOUT, IOUT increases from 6 A to 7.8 A)

### 8.10 Synchronization

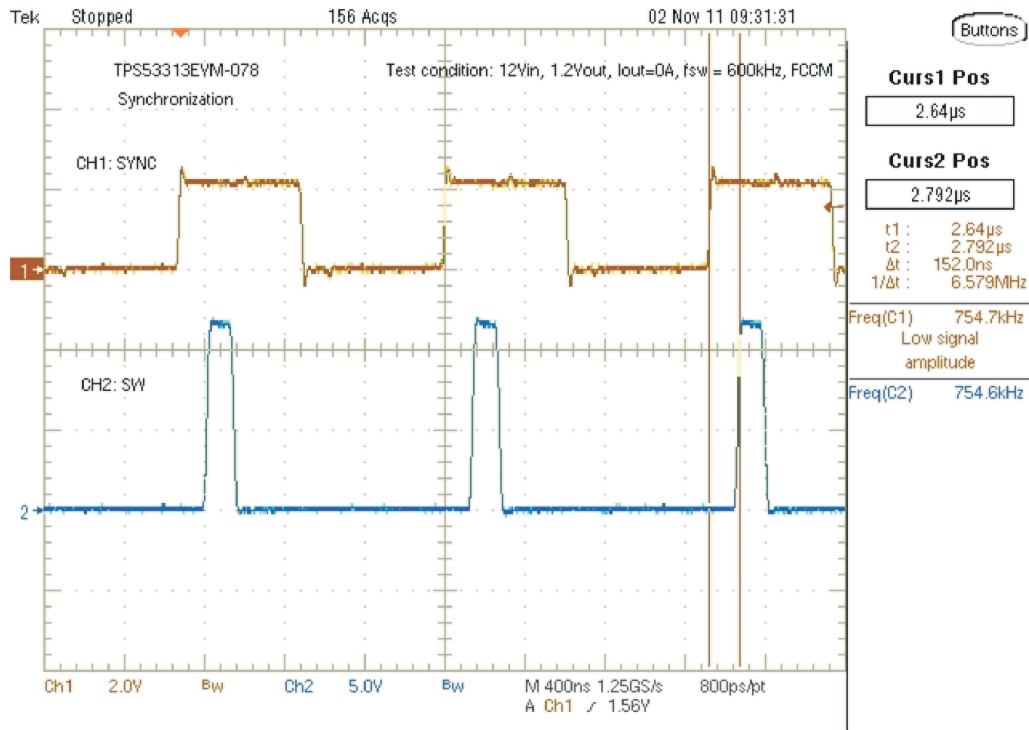


Figure 8-14. Synchronization Waveform (12-V VIN, 1.2-V VOUT, 0-A IOUT, free-running frequency = 600 kHz, SYNC frequency = 750 kHz)

### 8.11 Bode Plot

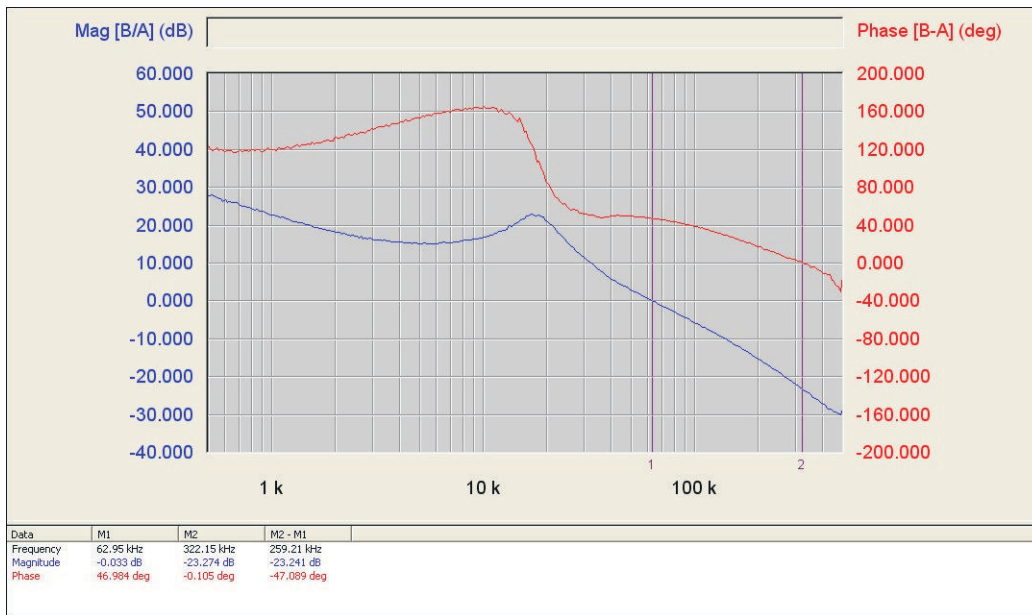


Figure 8-15. Loop Gain (12-V VIN, 1.2-V VOUT, 6-A IOUT, Skip Mode, f<sub>sw</sub> = 600 kHz)



## 8.12 Thermal Image

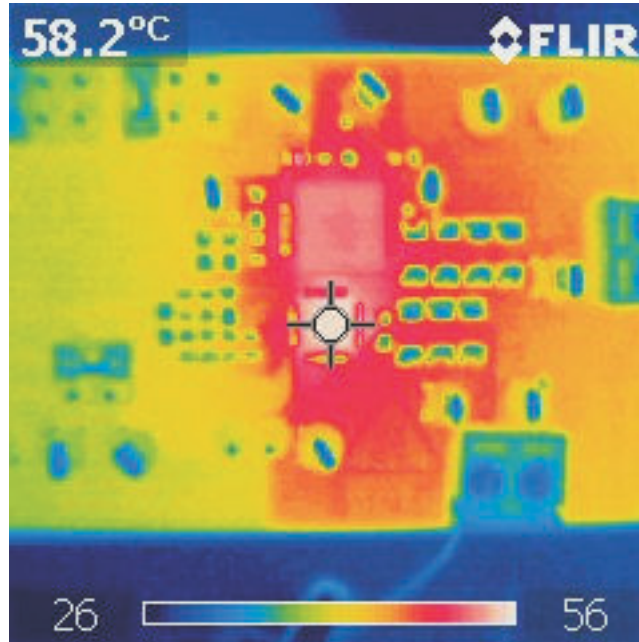


Figure 8-16. Thermal Image (12-V VIN, 1.2-V VOUT, 6-A IOUT, FCCM Mode,  $f_{sw} = 600$  kHz)

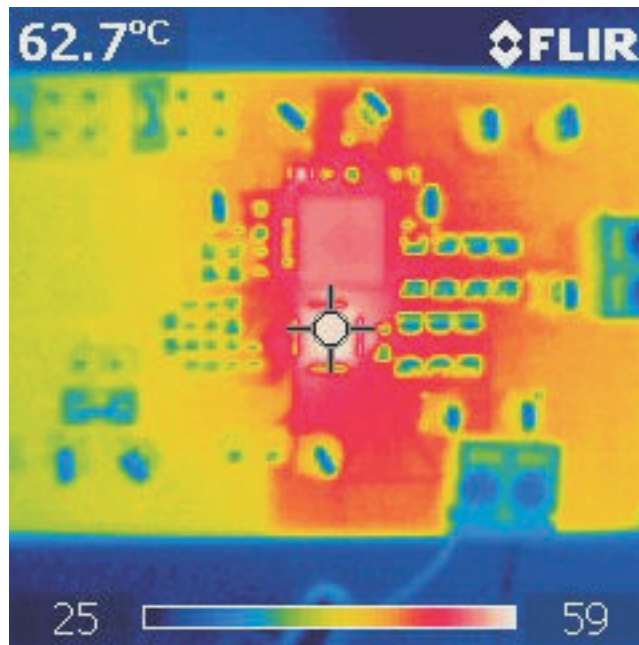


Figure 8-17. Thermal Image (12-V VIN, 1.2-V VOUT, 6-A IOUT, FCCM Mode,  $f_{sw} = 1.00$  MHz)

## 9 EVM Assembly Drawing and PCB Layout

The following figures (Figure 9-1 through Figure 9-6) show the design of the TPS53313EVM-078 printed circuit board. The EVM has been designed using 4 Layers, 2-oz copper circuit board.

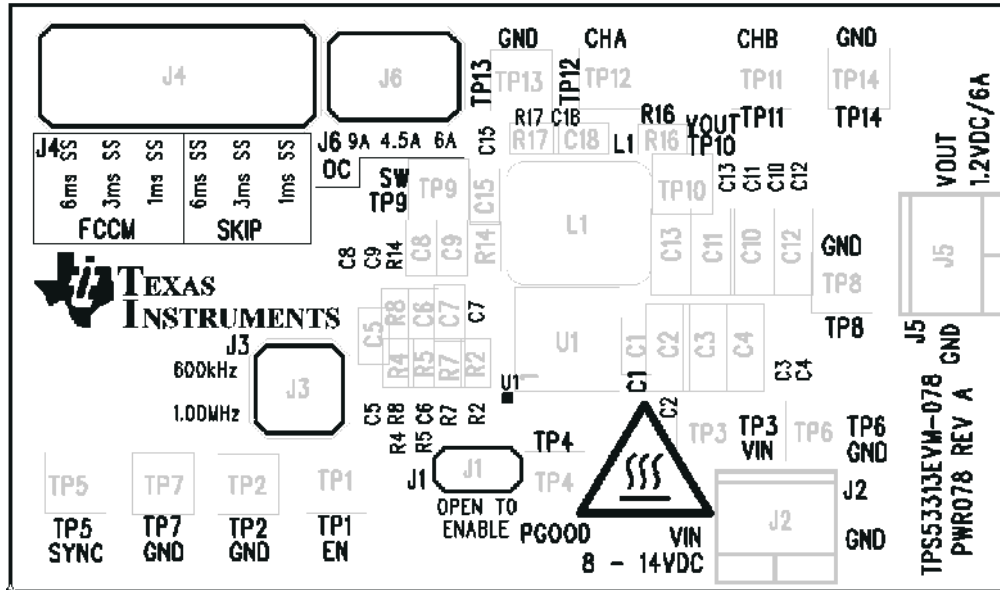


Figure 9-1. TPS53313EVM-078 Top Layer Assembly Drawing (top view)

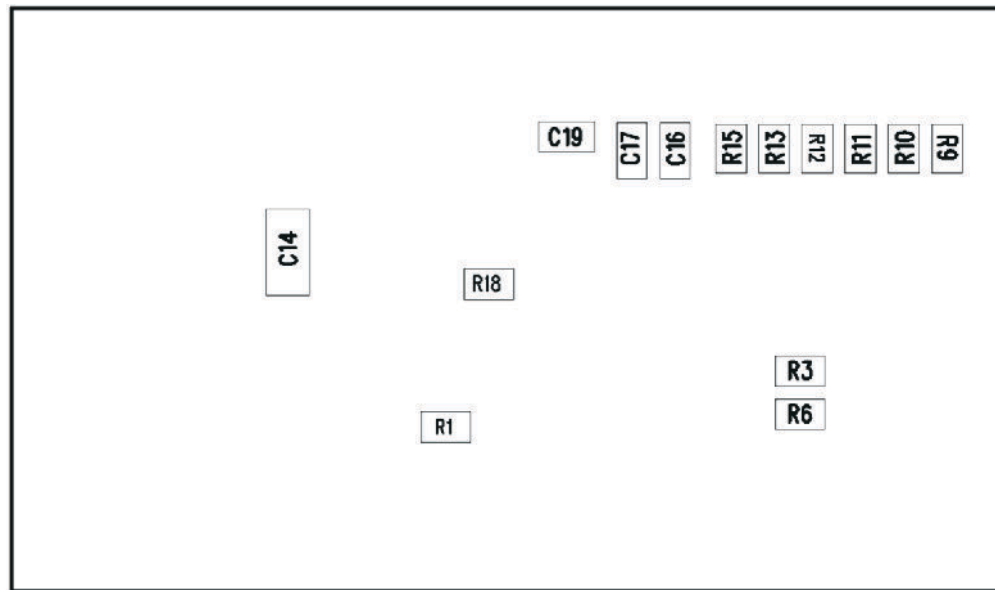


Figure 9-2. TPS53313EVM-078 Bottom Assembly Drawing (bottom view)

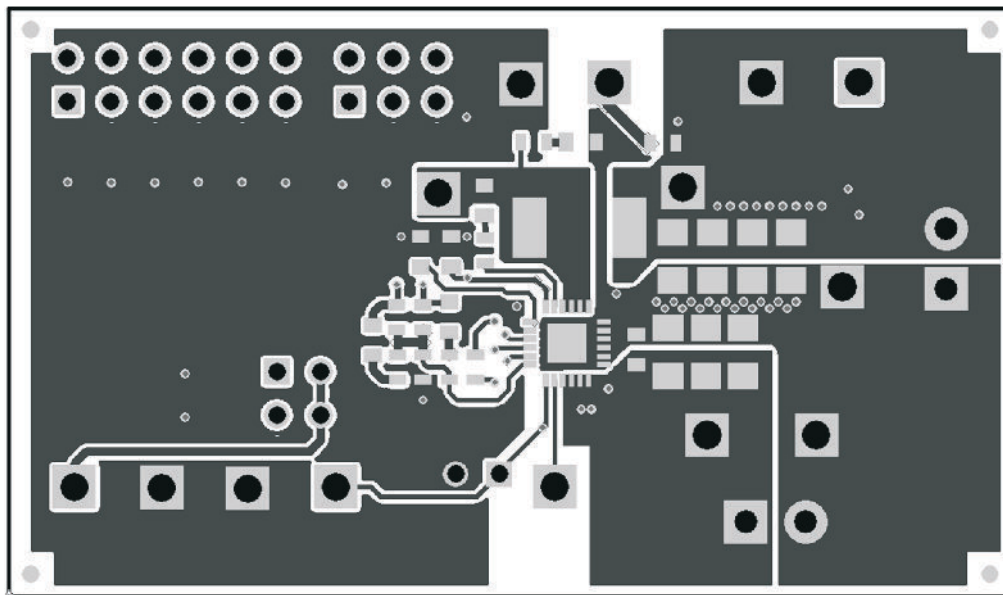


Figure 9-3. TPS53313EVM-078 Top Copper (top view)

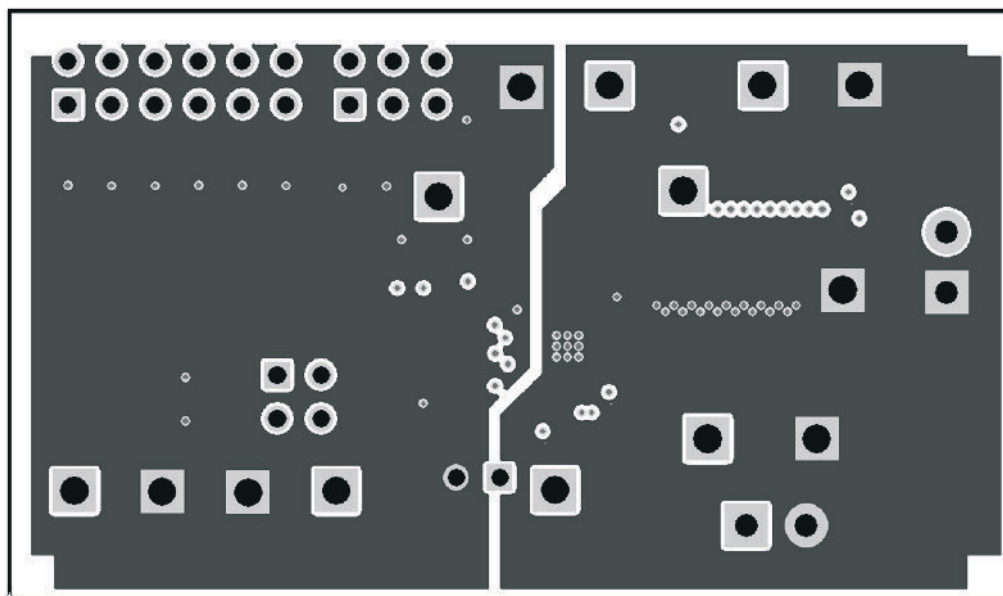


Figure 9-4. TPS53313EVM-078 Layer 2 (top view)

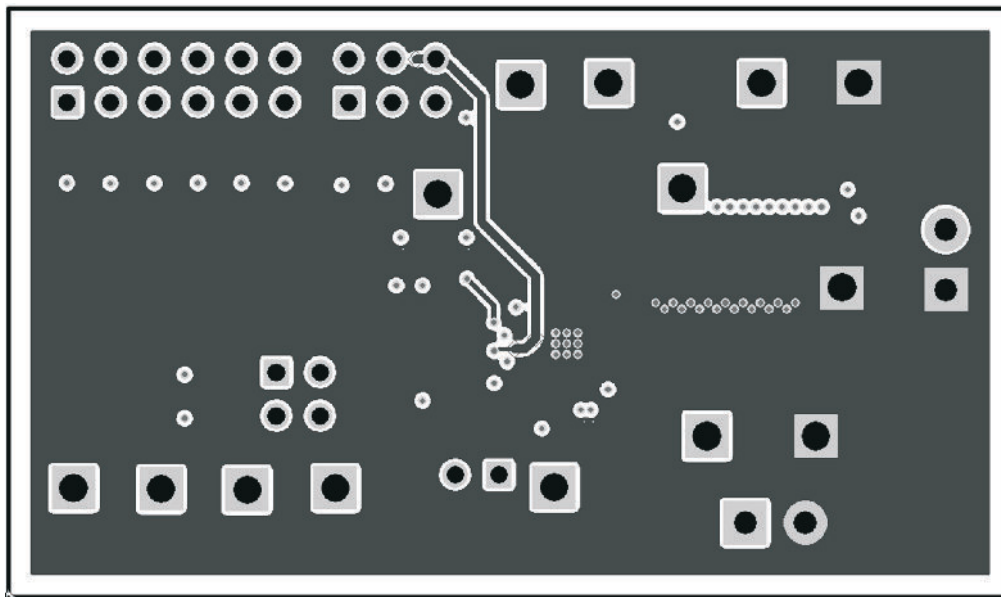


Figure 9-5. TPS53313EVM-078 Layer 3 (top view)

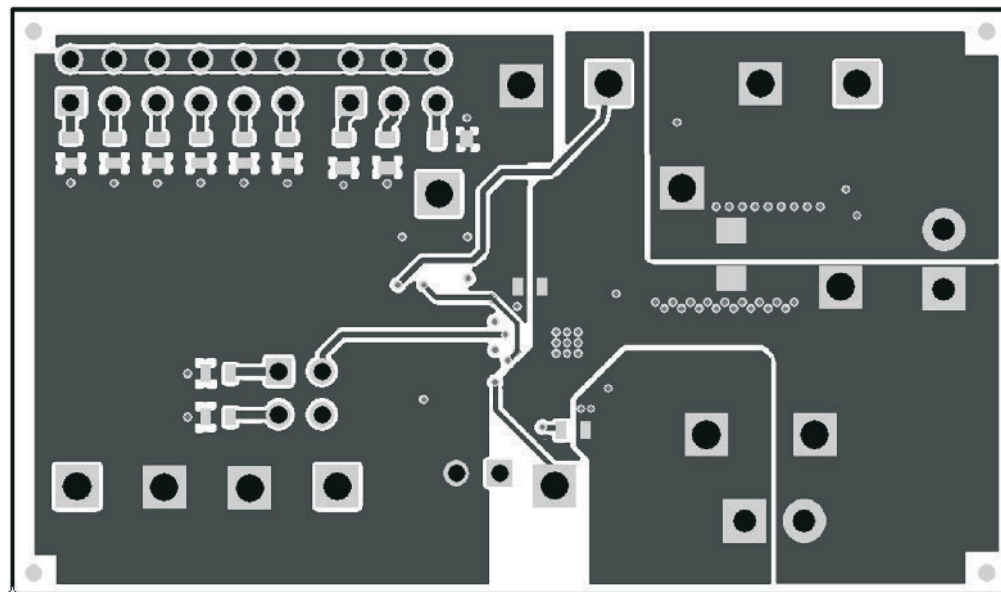


Figure 9-6. TPS53313EVM-078 Bottom Layer (top view)

## 10 List of Materials

The EVM components list according to the schematic shown in [Figure 4-1](#)

**Table 10-1. TPS53313EVM-078 List of Materials**

| QTY | REF DES                             | DESCRIPTION   | PART NUMBER     | MFR        |
|-----|-------------------------------------|---|-----------------|------------|
| 3   | C1, C8, C9                          | Capacitor, ceramic, 16 V, X7R, 10%, 1.0 $\mu$ F, 0603                 | Std             | Std        |
| 8   | C2, C3, C4, C10, C11, C12, C13, C14 | Capacitor, ceramic, 25 V, X5R, 10%, 22 $\mu$ F, 1206                  | Std             | Std        |
| 1   | C5                                  | Capacitor, ceramic, 16 V, X7R, 10%, 560 pF, 0603                      | Std             | Std        |
| 1   | C6                                  | Capacitor, ceramic, 16 V, X7R, 10%, 220 pF, 0603                      | Std             | Std        |
| 2   | C7, C16                             | Capacitor, ceramic, 16 V, X7R, 10%, 10 nF, 0603                       | Std             | Std        |
| 1   | C15                                 | Capacitor, ceramic, 50 V, X7R, 10%, 0.1 $\mu$ F, 0603                 | Std             | Std        |
| 1   | C17                                 | Capacitor, ceramic, 16 V, X7R, 10%, 2.2 nF, 0603                      | Std             | Std        |
| 1   | C18                                 | Capacitor, ceramic, low inductance, 50 V, X7R, 10%, 1.0 nF, 0603      | Std             | Std        |
| 0   | C19                                 | Capacitor, ceramic, 16 V, X7R, 10%, 0603                              | Std             | Std        |
| 1   | J1                                  | Header, male 2 pin, 100-mil spacing, 0.100 inch x 2 inch              | PEC02SAAN       | Sullins    |
| 2   | J2, J5                              | Terminal block, 2-pin, 6-A, 3.5mm, 0.27 inch x 0.25 inch              | ED555/2DS       | OST        |
| 1   | J3                                  | Header, 2 x 2 pin, 100-mil spacing, 0.20 inch x 0.20 inch             | PEC02DAAN       | Sullins    |
| 1   | J4                                  | Header, male 2 x 6 pin, 100-mil spacing, 0.100 inch x 2 inch x 6 inch | PEC06DAAN       | Sullins    |
| 1   | J6                                  | Header, male 2 x 3 pin, 100-mil spacing, 0.20 inch x 0.30 inch        | PEC03DAAN       | Sullins    |
| 1   | L1                                  | Inductor, 1.0 $\mu$ H, 5.6 m $\Omega$ , $\pm$ 20%, 6.6 mm x 7 mm      | PCMC065T-1R0 MN | Cyntec Co. |
| 1   | R1                                  | Resistor, chip, 1/16 W, 1%, 22.0 k $\Omega$ , 0603                    | Std             | Std        |
| 1   | R2                                  | Resistor, chip, 1/16 W, 1%, 51.0 k $\Omega$ , 0603                    | Std             | Std        |
| 1   | R3                                  | Resistor, chip, 1/16 W, 1%, 80.6 k $\Omega$ , 0603                    | Std             | Std        |
| 1   | R4                                  | Resistor, chip, 1/16 W, 1%, 300 $\Omega$ , 0603                       | Std             | Std        |
| 3   | R5, R8, R9                          | Resistor, chip, 1/16 W, 1%, 10.0 k $\Omega$ , 0603                    | Std             | Std        |
| 1   | R6                                  | Resistor, chip, 1/16 W, 1%, 45.3 k $\Omega$ , 0603                    | Std             | Std        |
| 1   | R7                                  | Resistor, chip, 1/16 W, 1%, 5.60 k $\Omega$ , 0603                    | Std             | Std        |
| 1   | R10                                 | Resistor, chip, 1/16 W, 1%, 20.0 k $\Omega$ , 0603                    | Std             | Std        |

**Table 10-1. TPS53313EVM-078 List of Materials (continued)**

| QTY | REF DES                        | DESCRIPTION   | PART NUMBER | MFR      |
|-----|--------------------------------|---|-------------|----------|
| 1   | R11                            | Resistor, chip, 1/16 W, 1%, 39.0 k $\Omega$ , 0603      | Std         | Std      |
| 1   | R12                            | Resistor, chip, 1/16 W, 1%, 82.0 k $\Omega$ , 0603      | Std         | Std      |
| 1   | R13                            | Resistor, chip, 1/16 W, 1%, 160 k $\Omega$ , 0603       | Std         | Std      |
| 2   | R14, R18                       | Resistor, chip, 1/16 W, 1%, 0 $\Omega$ , 0603           | Std         | Std      |
| 0   | R15                            | Resistor, chip, 1/16 W, 1%, 0603                        | Std         | Std      |
| 1   | R16                            | Resistor, chip, 1/16 W, 1%, 10.0 $\Omega$ , 0603        | Std         | Std      |
| 1   | R17                            | Resistor, chip, 1/8 W, 1%, 1.00 $\Omega$ , 0603         | Std         | Std      |
| 4   | TP1, TP4, TP11, TP12           | Test point, white, thru hole, 0.125 inch x 0.125 inch   | 5012        | Keystone |
| 6   | TP2, TP6, TP7, TP8, TP13, TP14 | Test point, black, thru hole, 0.125 inch x 0.125 inch   | 5011        | Keystone |
| 4   | TP3, TP5, TP9, TP10            | Test point, red, thru hole, 0.125 inch x 0.125 inch     | 5010        | Keystone |
| 1   | U1                             | 6A Step-down Regulator with Integrated Switcher, QFN-24 | TPS53313RGE | TI       |
| 4   | --                             | Shunt, 100 mil, black, 0.100 inch                       | 929950-00   | 3M       |
| 1   | --                             | PCB, 2.3 inch x 1.35 inch x 0.062 inch                  | PWR078      | Any      |

## 11 Revision History

NOTE: Page numbers for previous revisions may differ from page numbers in the current version.

### Changes from Revision \* (December 2011) to Revision A (December 2021)

**Page**

- Updated the numbering format for tables, figures, and cross-references throughout the document. ....3
- Updated the user's guide title..... 3

## IMPORTANT NOTICE AND DISCLAIMER

TI PROVIDES TECHNICAL AND RELIABILITY DATA (INCLUDING DATA SHEETS), DESIGN RESOURCES (INCLUDING REFERENCE DESIGNS), APPLICATION OR OTHER DESIGN ADVICE, WEB TOOLS, SAFETY INFORMATION, AND OTHER RESOURCES "AS IS" AND WITH ALL FAULTS, AND DISCLAIMS ALL WARRANTIES, EXPRESS AND IMPLIED, INCLUDING WITHOUT LIMITATION ANY IMPLIED WARRANTIES OF MERCHANTABILITY, FITNESS FOR A PARTICULAR PURPOSE OR NON-INFRINGEMENT OF THIRD PARTY INTELLECTUAL PROPERTY RIGHTS.

These resources are intended for skilled developers designing with TI products. You are solely responsible for (1) selecting the appropriate TI products for your application, (2) designing, validating and testing your application, and (3) ensuring your application meets applicable standards, and any other safety, security, regulatory or other requirements.

These resources are subject to change without notice. TI grants you permission to use these resources only for development of an application that uses the TI products described in the resource. Other reproduction and display of these resources is prohibited. No license is granted to any other TI intellectual property right or to any third party intellectual property right. TI disclaims responsibility for, and you will fully indemnify TI and its representatives against, any claims, damages, costs, losses, and liabilities arising out of your use of these resources.

TI's products are provided subject to [TI's Terms of Sale](#) or other applicable terms available either on [ti.com](http://ti.com) or provided in conjunction with such TI products. TI's provision of these resources does not expand or otherwise alter TI's applicable warranties or warranty disclaimers for TI products.

TI objects to and rejects any additional or different terms you may have proposed.

Mailing Address: Texas Instruments, Post Office Box 655303, Dallas, Texas 75265  
Copyright © 2022, Texas Instruments Incorporated