

Streamlining Semiconductor Procurement With Instant Access E-Commerce



Speed time to market with self-service purchasing features

Elena Colglazier
Director, Customer Interface Platform



Every electronics company wants availability and assurance of supply from semiconductor manufacturers. Purchasing managers at both large and small companies work to streamline operations and improve the workflow of their procurement systems with one goal in mind: to get the analog and embedded processing semiconductors they need so that designers can speed time to market for their designs.

Purchasers want better transparency from their suppliers, especially complete visibility into the inventory of available products. Texas Instruments (TI) continues to invest in advanced ordering, tracking and shipping capabilities to make the purchasing experience as convenient as possible. We provide a real-time view of immediately available inventory on TI.com, self-service tools with instant access to order management, and a feature-rich myTI dashboard to navigate through the onboarding and purchasing process. Our suite of APIs enables direct connections of procurement systems to TI, giving you transparency and confidence in your supply chain.

Streamlining the purchasing experience

Transformation is long overdue in semiconductor procurement. While large companies like automakers may have advanced purchasing capabilities, companies in other industries struggle to make their existing procurement systems more sophisticated, leading to frustration, delays and potential order errors. For many organizations, the handoff from engineering requirements to procurement is manual.

Some companies still use email when purchasing from suppliers. Others must re-key every order, invoice or request for the material requirements planning documents they submit to a supplier, which introduces the potential for error and wastes valuable time.

These common practices have made semiconductor procurement more complex, costly and less reliable than it should be.

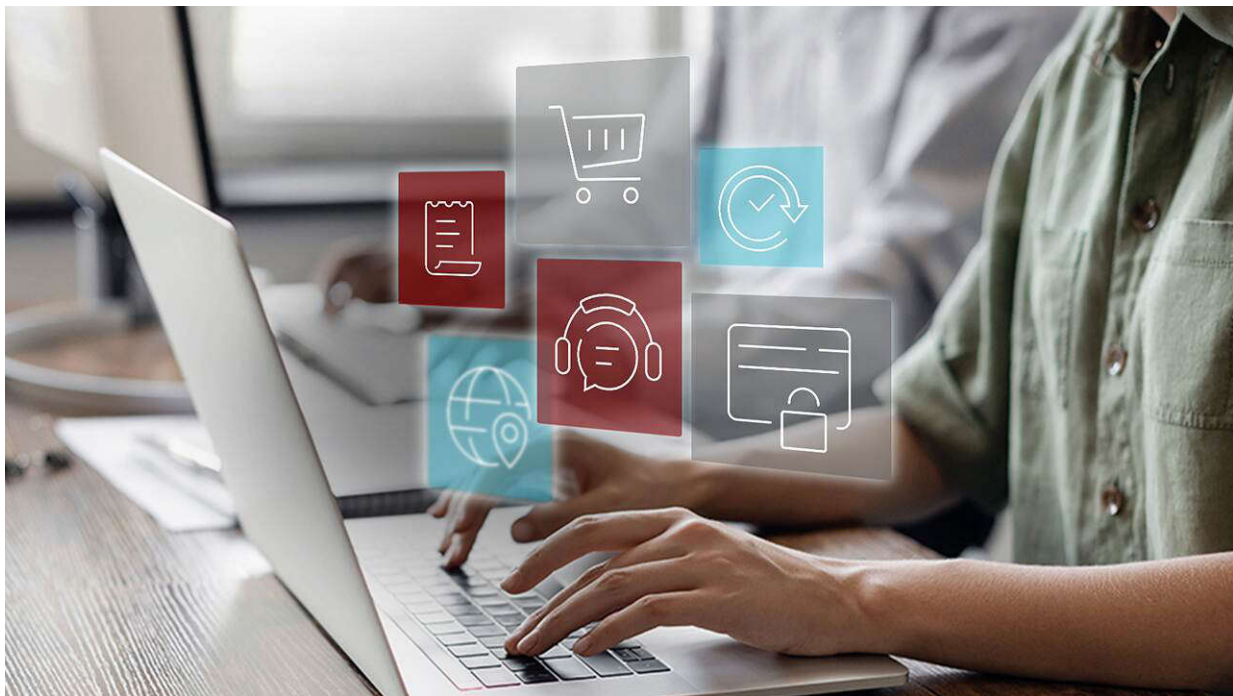


Figure 1. Self-service e-commerce capabilities help you make faster and smarter purchasing decisions.

Over the last decade, TI has invested in self-service capabilities on TI.com to make it more convenient to purchase our products, automating the order management experience to make it easier to find the right qualified products for designs. We want engineers to have seamless access to our large and diverse product portfolios.

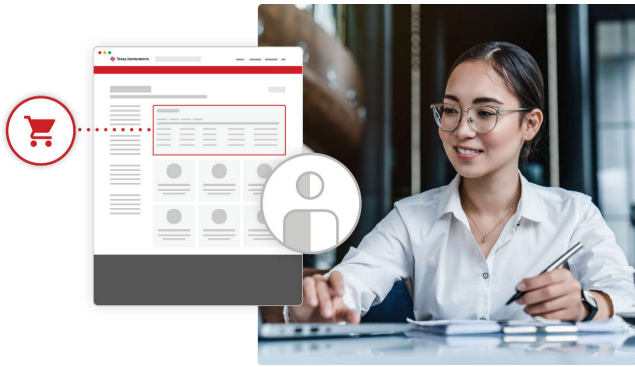


Figure 2. The myTI dashboard and myTI company account simplify the order management experience.

As a semiconductor manufacturer, it is important to us that you have the ability to make fast and efficient procurement decisions. Unprecedented insights into availability, detailed product information such as material attribute and quality documentation, and comprehensive order management make it possible to gain faster access to inventory and thus get to market faster. The enhancements we've made give you better control over your buying process, resulting in an improved supply chain.

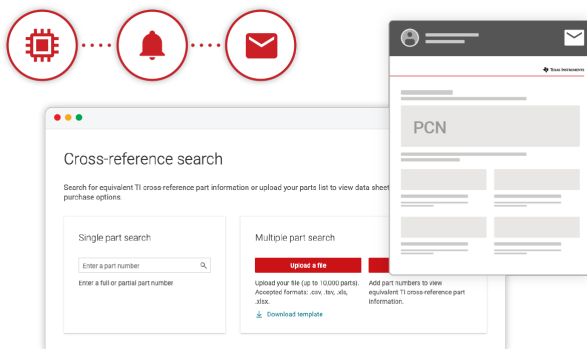


Figure 3. From APIs to checkout profiles, TI helps automate the checkout process.

Self-service purchasing features available from TI:

- **myTI dashboard** – The myTI dashboard is a portal that simplifies the order management experience by giving purchasing managers access to administrative order information, including current and past orders, invoices and other purchasing documents, shipment tracking, line-of-credit insights, and everything in between. There are task widgets to help you navigate the onboarding and purchasing journey that take the guesswork out of finding information or what the next steps are.

The material attribute data tool in the dashboard gives purchasers and engineers direct visibility into material attribution data such as country of origin, lead times, TI.com inventory and more.

- **myTI company account** – Our new company account feature gives a company's procurement team and any employee with an email address on its web domain the ability to collaborate through a shared account. A **myTI company account** gives teams greater flexibility across their organization to do business with TI faster and easier than before. Company accounts make it possible to replicate company hierarchical structures or organize by product line, end customer or region.

An account administrator can quickly add users, manage permissions and account control, and open new company accounts. Administrators can also delegate purchasing and create reusable checkout profiles, as well as keep track of all purchasing information in a consolidated order history and invoicing dashboard. A myTI company account is the only way to access TI's suite of APIs and organize a company's users under one account.

- **Checkout profiles** – Purchasing managers can create customizable profiles for a fast, hassle-free checkout experience. During the checkout process, the profiles automatically populate all pre-saved shipping and payment information, including tax exemption

certificates, end-use certificates, freight options, addresses and customs-clearance information.

- **TI APIs** – Our extensive [suites of APIs](#) help you automate your entire sourcing and ordering experience, from initial part selection through inventory monitoring, pricing, purchase and product delivery. Business-critical information is populated directly into your procurement system, giving you direct, convenient access to product and order information. Our suites of APIs comprise comprehensive [TI store APIs](#), which include inventory, order and shipping APIs; product information APIs; and a range of backlog APIs for select users.
- **API integration** – We have simplified the process of integrating TI APIs by providing case study examples, documentation and a step-by-step connection guide available on TI's [API developer portal](#).
- **Backlog status and document reprints** – Real-time inventory backlog information is available with a myTI company account, including important ordering-related documents such as tracking details and commercial and financial invoices. You can use [backlog APIs](#) to manage your product backlog orders and retrieve all of your ordering and backlog information directly from your own procurement system.

Conclusion

Semiconductor availability and assurance of supply continue to be top of mind at electronics companies, and those factors remain a priority at TI. Sourcing directly with TI provides seamless access to the company's entire product portfolio of analog and embedded processing products to speed time to market. Our self-service capabilities help you fulfill your purchase needs in minutes versus days or weeks.

Whether sourcing directly from TI.com or through TI APIs, access and visibility to real-time data can help you make faster and smarter purchasing decisions. Our myTI dashboard, myTI company account and other capabilities such as checkout profiles give you the flexibility and control to better manage orders.

Important Notice: The products and services of Texas Instruments Incorporated and its subsidiaries described herein are sold subject to TI's standard terms and conditions of sale. Customers are advised to obtain the most current and complete information about TI products and services before placing orders. TI assumes no liability for applications assistance, customer's applications or product designs, software performance, or infringement of patents. The publication of information regarding any other company's products or services does not constitute TI's approval, warranty or endorsement thereof.

All trademarks are the property of their respective owners.

IMPORTANT NOTICE AND DISCLAIMER

TI PROVIDES TECHNICAL AND RELIABILITY DATA (INCLUDING DATA SHEETS), DESIGN RESOURCES (INCLUDING REFERENCE DESIGNS), APPLICATION OR OTHER DESIGN ADVICE, WEB TOOLS, SAFETY INFORMATION, AND OTHER RESOURCES "AS IS" AND WITH ALL FAULTS, AND DISCLAIMS ALL WARRANTIES, EXPRESS AND IMPLIED, INCLUDING WITHOUT LIMITATION ANY IMPLIED WARRANTIES OF MERCHANTABILITY, FITNESS FOR A PARTICULAR PURPOSE OR NON-INFRINGEMENT OF THIRD PARTY INTELLECTUAL PROPERTY RIGHTS.

These resources are intended for skilled developers designing with TI products. You are solely responsible for (1) selecting the appropriate TI products for your application, (2) designing, validating and testing your application, and (3) ensuring your application meets applicable standards, and any other safety, security, regulatory or other requirements.

These resources are subject to change without notice. TI grants you permission to use these resources only for development of an application that uses the TI products described in the resource. Other reproduction and display of these resources is prohibited. No license is granted to any other TI intellectual property right or to any third party intellectual property right. TI disclaims responsibility for, and you will fully indemnify TI and its representatives against, any claims, damages, costs, losses, and liabilities arising out of your use of these resources.

TI's products are provided subject to [TI's Terms of Sale](#) or other applicable terms available either on [ti.com](https://www.ti.com) or provided in conjunction with such TI products. TI's provision of these resources does not expand or otherwise alter TI's applicable warranties or warranty disclaimers for TI products.

TI objects to and rejects any additional or different terms you may have proposed.

Mailing Address: Texas Instruments, Post Office Box 655303, Dallas, Texas 75265
Copyright © 2024, Texas Instruments Incorporated