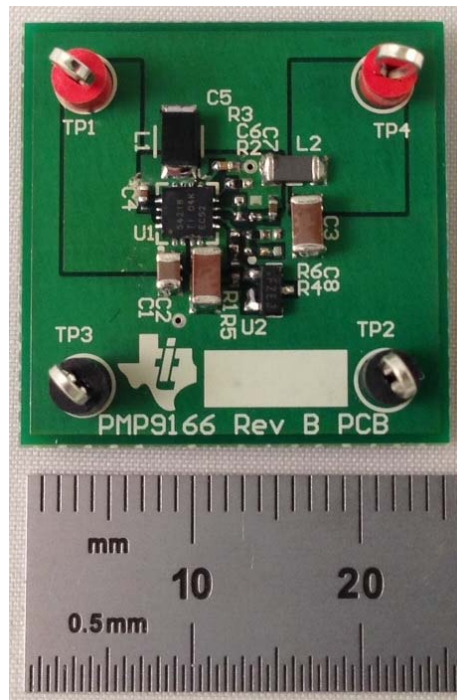


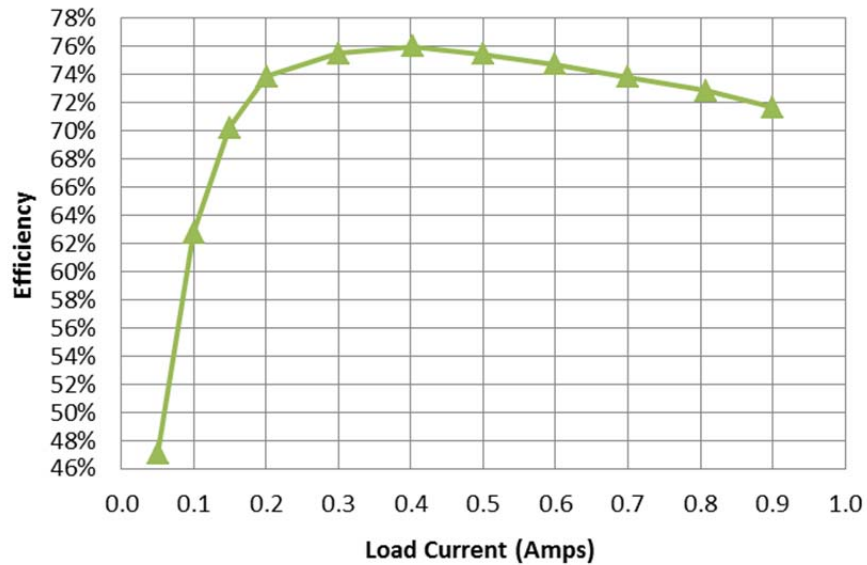
## 1 Photo

The photograph below shows the PMP9166 Rev B demo board.



## 2 Efficiency

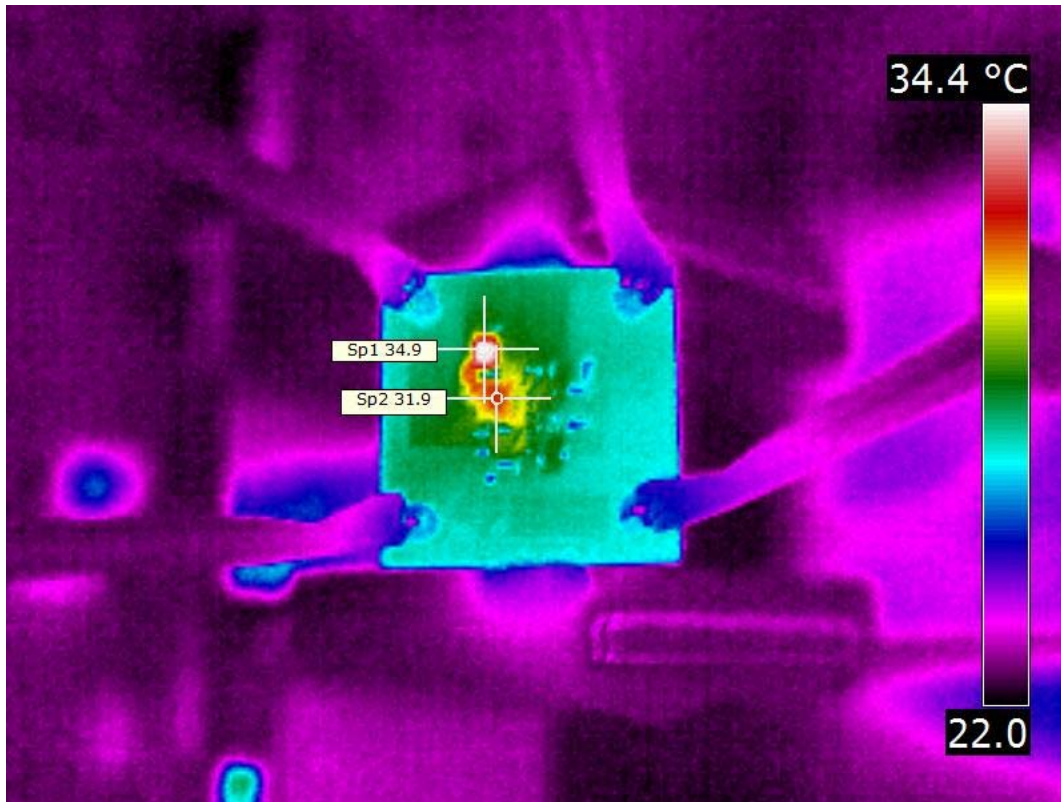
The efficiency data is shown in the table and graph below.



Iout	Vout	Vin	Iin	Pout	Losses	Efficiency
0.000	-0.499	3.311	0.008	0.00	0.026	0.1%
0.050	-0.498	3.308	0.016	0.02	0.028	47.0%
0.100	-0.498	3.306	0.024	0.05	0.030	62.8%
0.149	-0.498	3.303	0.032	0.07	0.031	70.2%
0.201	-0.497	3.300	0.041	0.10	0.035	73.8%
0.300	-0.497	3.293	0.060	0.15	0.048	75.5%
0.402	-0.496	3.321	0.079	0.20	0.063	76.0%
0.500	-0.495	3.314	0.099	0.25	0.081	75.4%
0.600	-0.494	3.307	0.120	0.30	0.100	74.7%
0.700	-0.494	3.299	0.142	0.35	0.123	73.8%
0.807	-0.493	3.291	0.166	0.40	0.148	72.8%
0.899	-0.492	3.283	0.188	0.44	0.175	71.7%

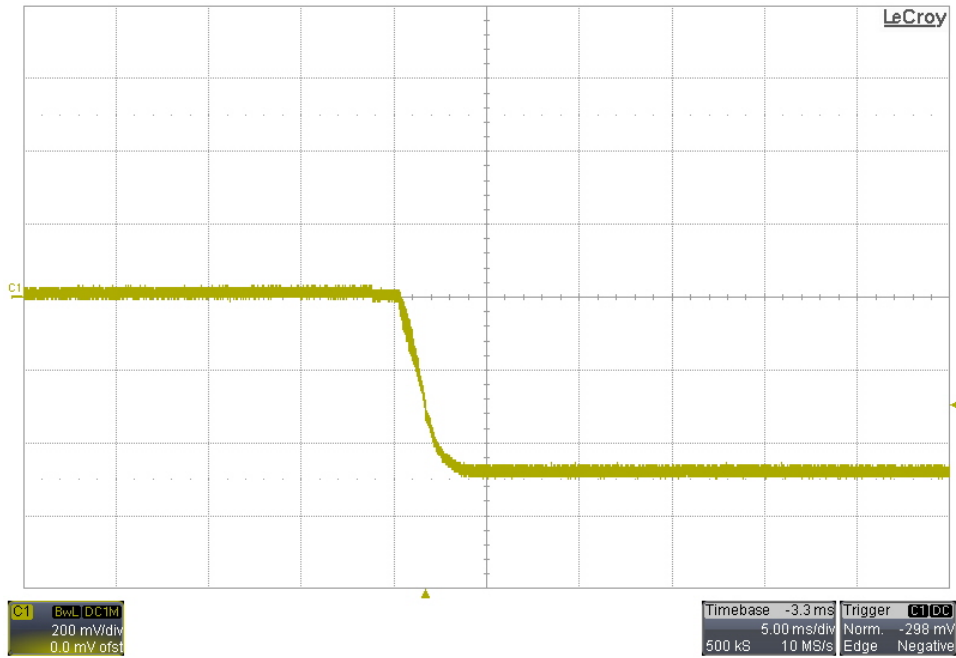
### 3 Thermal Image

The ambient temperature was 25C with no forced air flow. The output was loaded with 0.9A.

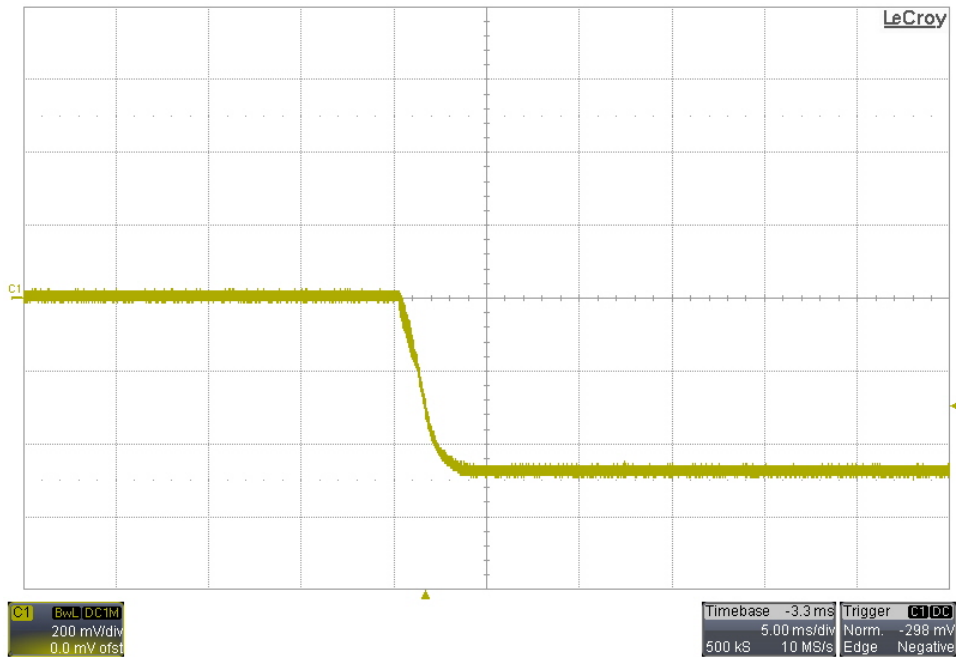


## 4 Startup

### 4.1 No Load

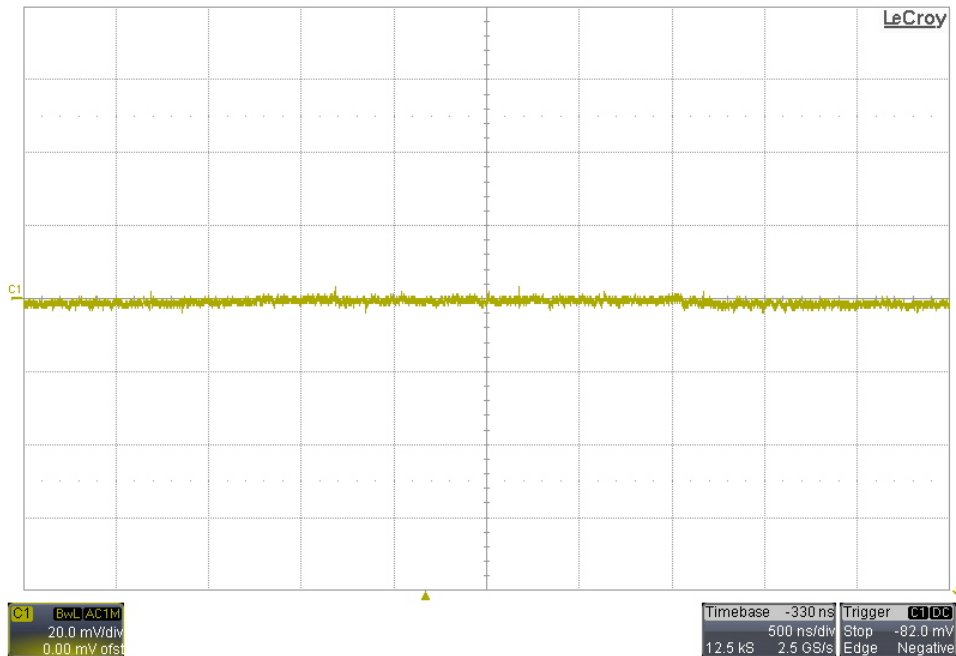


### 4.2 1Ω Load



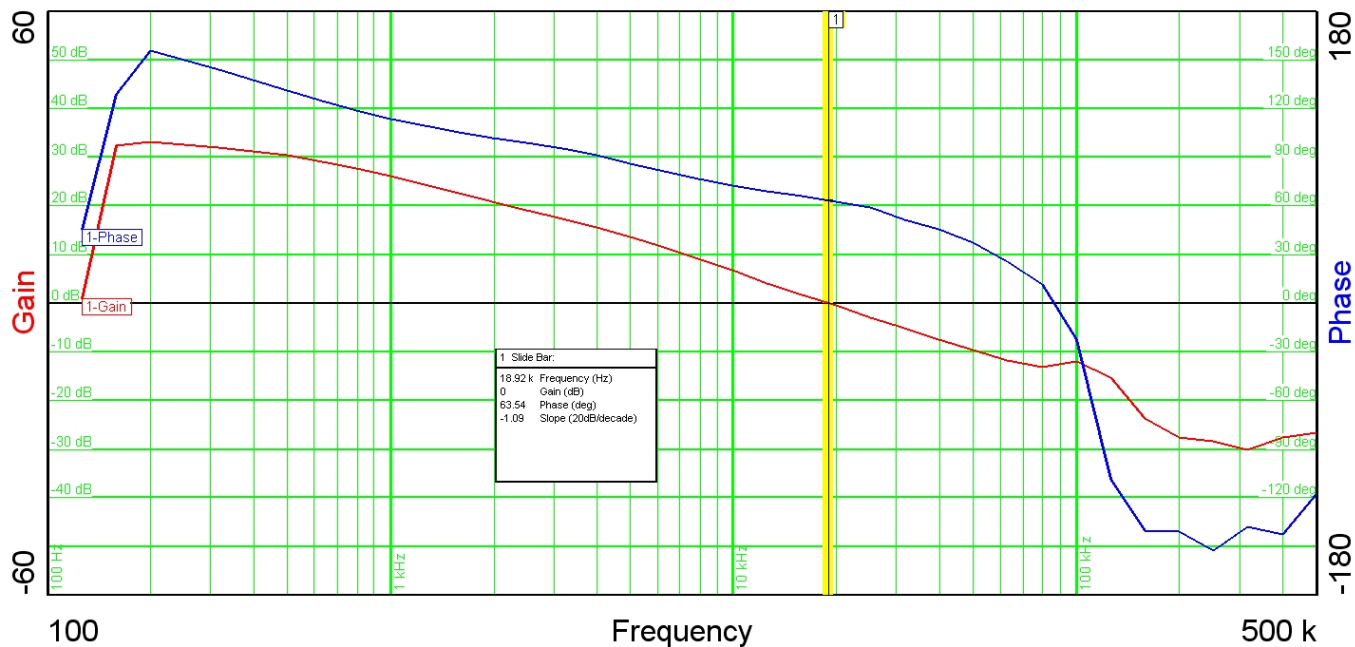
## 5 Output Ripple Voltage

The output was loaded with 0.9A.



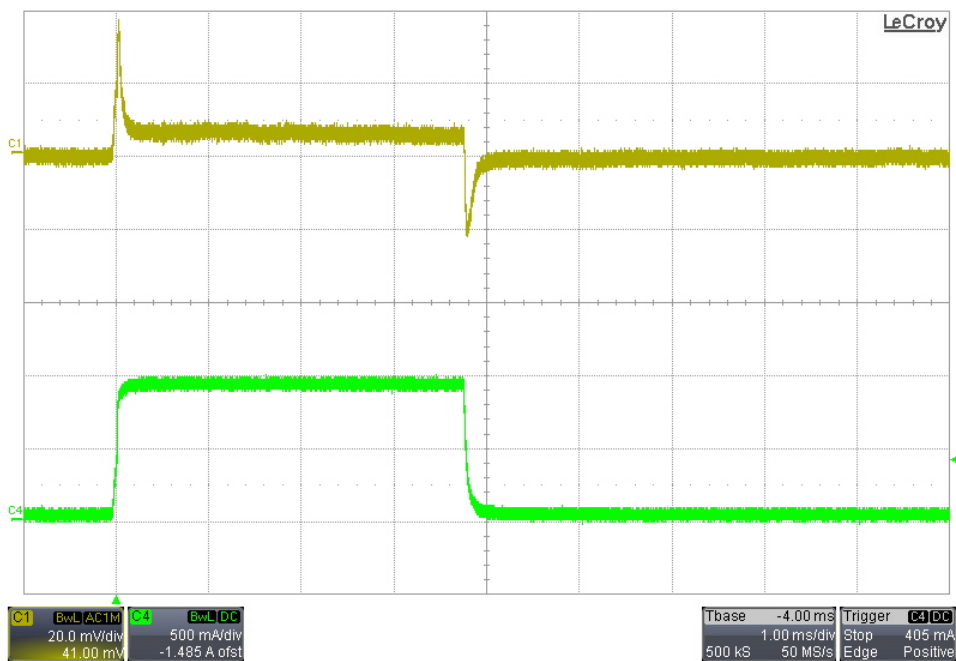
## 6 Frequency Response

The output was loaded with 0.9A.



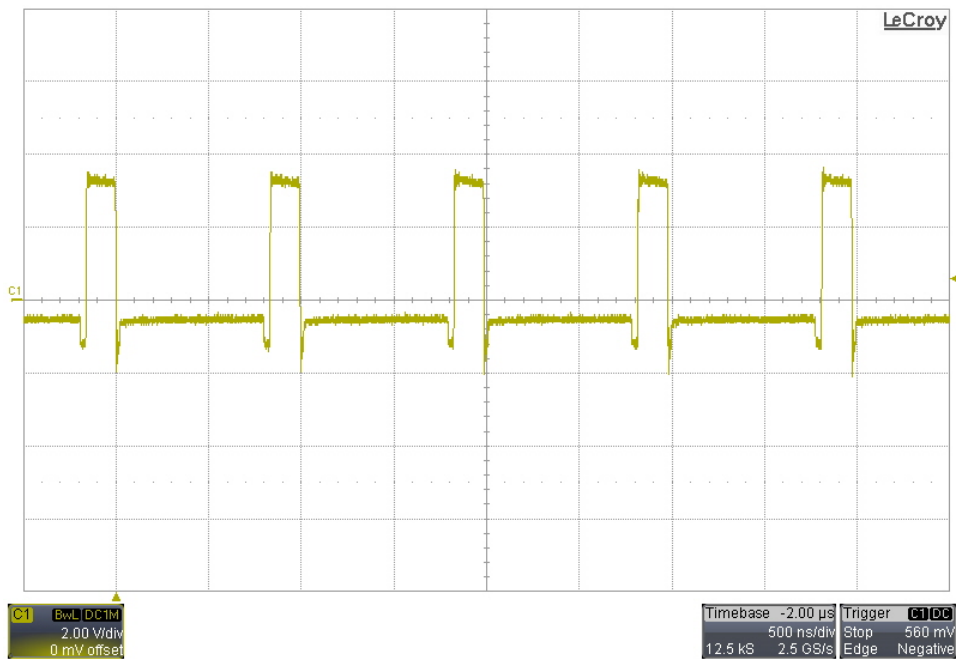
## 7 Load Transients

The response to a load step from 0A to 0.9A is shown in the image below. Channel 1: Vout (ac coupled); Channel 4: Iout



## 8 Switching Waveform – PH pin of U1

The output was loaded with 0.9A.



## IMPORTANT NOTICE AND DISCLAIMER

TI PROVIDES TECHNICAL AND RELIABILITY DATA (INCLUDING DATASHEETS), DESIGN RESOURCES (INCLUDING REFERENCE DESIGNS), APPLICATION OR OTHER DESIGN ADVICE, WEB TOOLS, SAFETY INFORMATION, AND OTHER RESOURCES "AS IS" AND WITH ALL FAULTS, AND DISCLAIMS ALL WARRANTIES, EXPRESS AND IMPLIED, INCLUDING WITHOUT LIMITATION ANY IMPLIED WARRANTIES OF MERCHANTABILITY, FITNESS FOR A PARTICULAR PURPOSE OR NON-INFRINGEMENT OF THIRD PARTY INTELLECTUAL PROPERTY RIGHTS.

These resources are intended for skilled developers designing with TI products. You are solely responsible for (1) selecting the appropriate TI products for your application, (2) designing, validating and testing your application, and (3) ensuring your application meets applicable standards, and any other safety, security, or other requirements. These resources are subject to change without notice. TI grants you permission to use these resources only for development of an application that uses the TI products described in the resource. Other reproduction and display of these resources is prohibited. No license is granted to any other TI intellectual property right or to any third party intellectual property right. TI disclaims responsibility for, and you will fully indemnify TI and its representatives against, any claims, damages, costs, losses, and liabilities arising out of your use of these resources.

TI's products are provided subject to TI's Terms of Sale (<https://www.ti.com/legal/termsofsale.html>) or other applicable terms available either on [ti.com](https://www.ti.com) or provided in conjunction with such TI products. TI's provision of these resources does not expand or otherwise alter TI's applicable warranties or warranty disclaimers for TI products.

Mailing Address: Texas Instruments, Post Office Box 655303, Dallas, Texas 75265  
Copyright © 2021, Texas Instruments Incorporated