

AN-1751 4A LM20k Reference Designs

ABSTRACT

This application note discusses the design options using the high performance 4A synchronous buck converters, LM20124, LM20134, and LM20144.

Contents

1	Introduction	2
2	Solution Optimized for Efficiency	2
	2.1 Inductor Selection	2
	2.2 Output Capacitor Selection	2
	2.3 Compensation Selection	3
3	Optimizing a Solution for Size	4
	3.1 Inductor Selection	4
	3.2 Output Capacitor Selection	5
	3.3 Compensation Selection	5
4	Solution Optimized for Transient Response	6
	4.1 Inductor Selection	7
	4.2 Output Capacitor Selection	7
	4.3 Compensation Selection	7

List of Figures

1	3.3V Output Solution Optimized for Efficiency	3
2	Efficiency vs I_{OUT}	4
3	Output Voltage Ripple	4
4	Transient Response	4
5	1.2V Output Solution Optimized for Size	5
6	Efficiency vs I_{OUT}	6
7	Output Voltage Ripple	6
8	Transient Response	6
9	1.2V Output Solution Optimized for Load Transients	7
10	Efficiency vs I_{OUT}	8
11	Output Voltage Ripple	8
12	Transient Response	8

List of Tables

1	High Efficiency Bill of Materials ($V_{IN} = 5V$, $V_{OUT} = 3.3V$, $I_{OUT(MAX)} = 4A$, $f_{SW} = 620\text{ kHz}$).....	3
2	Bill of Materials (Small solution size, $V_{IN} = 5V$, $V_{OUT} = 1.2V$, $I_{OUT(MAX)} = 4A$)	5
3	Transient Response Bill of Materials ($V_{IN} = 5V$, $V_{OUT} = 3.3V$, $I_{OUT(MAX)} = 4A$, $f_{SW} = 1.5\text{ MHz}$)	7

1 Introduction

The LM20124, LM20134, and LM20144 are a full-featured family of high performance 4A synchronous buck converters. These devices are tailored to operate over an input voltage range of 2.95V to 5.5V and each can be optimized to meet many different performance requirements. The LM20124 operates at a fixed frequency and only requires 11 components to generate a solution. The LM20144 is similar to the LM20124 except the frequency of the device can be varied from 460 kHz to 1.5 MHz with an external resistor. This gives the power supply designer the flexibility to trade-off inductor size and efficiency. The LM20134 features a synchronization input pin that synchronizes the internal oscillator to an external signal to keep the switching regulators operating with the same phase which is critical in many noise sensitive designs.

The reference designs discussed will show how the 4A devices can be optimized for size, efficiency and transient response. The trade-offs made for each design will be discussed for the various 4A devices. Test results for including efficiency, output voltage ripple, and transient response will be shown for each design.

2 Solution Optimized for Efficiency

The LM20144 was selected for a high-efficiency design because the operating frequency can be adjusted to minimize switching losses. A low switching frequency will minimize the switching losses; however, this will also require a solution with a higher value inductance with a higher DC series resistance (DCR). Since the LM20k family of devices feature very low switching losses a switching frequency of 620 kHz was selected. This choice of operating frequency balances the inductance DCR losses with the switching frequency losses to give a small, highly efficient solution. This design can also work with the LM20133 synchronizing to 620 kHz.

2.1 Inductor Selection

As per the data sheet recommendations, the inductor value should initially be chosen to give a peak-to-peak ripple current equal to roughly 30% of the maximum output current. The peak-to-peak inductor ripple current can be calculated by the equation:

$$\Delta I_{P-P} = \frac{(V_{IN} - V_{OUT}) \times D}{L \times f_{SW}} \quad (1)$$

Rearranging the above equation and solving for the inductance reveals that for this application ($V_{IN} = 5V$, $V_{OUT} = 3.3V$, $D = V_{IN}/V_{OUT} = .66$, $f_{SW} = 620$ kHz, and $I_{OUT} = 4A$) the nominal inductance value is roughly 1.51 μH . Once an inductance value is calculated, an actual inductor needs to be selected based on a tradeoff between physical size, efficiency, and current carrying capability. The purpose of this design is to maximize the efficiency therefore, the choice of small value inductors with lower series resistance (DCR) can be examined provided the output current plus one-half the peak to peak ripple current does not exceed the device current limit. Examining several inductor vendors a TDK SPM6530T-1R5M100 inductor was selected. This 1.5 μH inductor results in a peak-to-peak ripple current of 1.2A when the converter is operating from 5V and 3.3V. For a design targeting high efficiency the TDK SPM6530T-1R5M100 inductor offers a good balance between efficiency (9.7 m Ω DCR), size, and saturation current rating (10A I_{SAT} rating).

2.2 Output Capacitor Selection

The value of the output capacitor in a buck regulator influences the voltage ripple that will be present on the output voltage, as well as the large signal output voltage response to a load transient. Given the peak-to-peak inductor current ripple (which can be calculated using equation 1) the output voltage ripple can be approximated by the equation:

$$\Delta V_{OUT} = \Delta I_{P-P} \times \left[R_{ESR} + \frac{1}{8 \times f_{SW} \times C_{OUT}} \right] \quad (2)$$

The variable R_{ESR} above refers to the ESR of the output capacitor. As can be seen in the above equation, the ripple voltage on the output can be divided into two parts, one of which is attributed to the AC ripple current flowing through the ESR of the output capacitor and another due to the AC ripple current actually charging and discharging the output capacitor. The output capacitor also has an effect on the amount of droop that is seen on the output voltage in response to a load transient event.

For this design a TDK 100 μF ceramic capacitor is selected for the output capacitor to provide good transient and DC performance in a relatively small package. From the technical specifications of this capacitor, the ESR at the 1.5 MHz switching frequency is roughly 2 m Ω , and the effective in-circuit capacitance is approximately 45 μF (reduced from 100 μF due to the 3.3V DC bias). With these values, the peak-to-peak voltage ripple on the output when operating from a 5V input can be calculated to be 8 mV.

2.3 Compensation Selection

The compensation network was selected using the excel design tool (available online) to give a crossover frequency of 50 kHz. For this target crossover frequency, operating conditions, and filter components the excel calculator suggested a value of C_{C1} of 2.2 nF and a value of R_{C1} of 9.09 k Ω .

The final schematic for a 5V or 3.3V to 1.2V conversion is shown in [Figure 1](#).

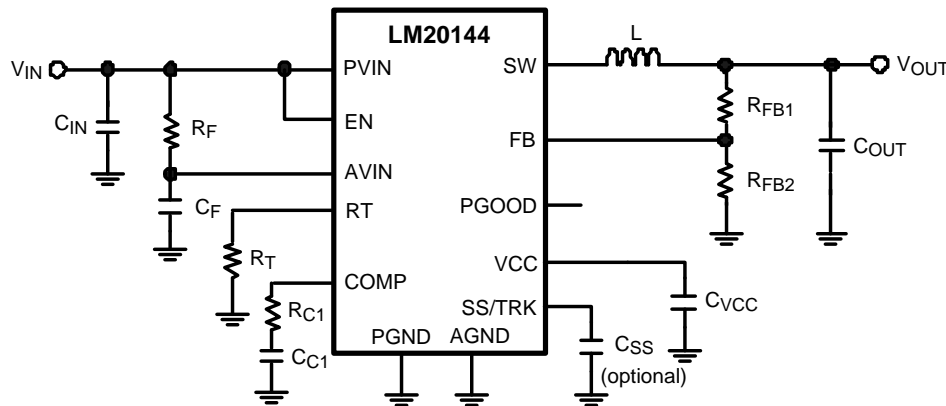
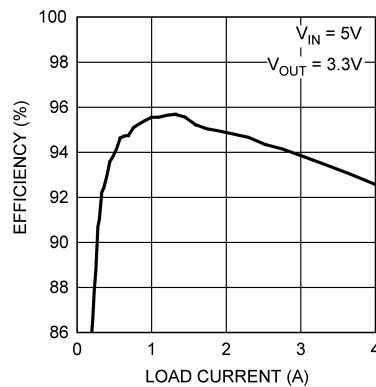
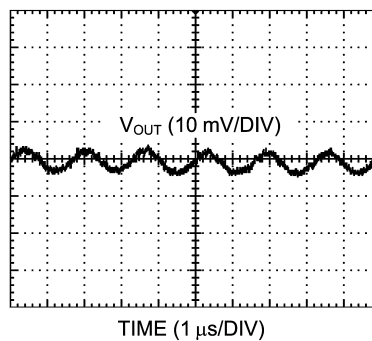
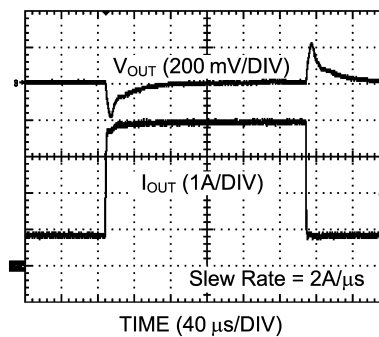


Figure 1. 3.3V Output Solution Optimized for Efficiency

Table 1. High Efficiency Bill of Materials ($V_{IN} = 5\text{V}$, $V_{OUT} = 3.3\text{V}$, $I_{OUT(MAX)} = 4\text{A}$, $f_{SW} = 620\text{ kHz}$)

Designator	Description	Part Number	Manufacturer	Qty
U1	Synchronous Buck Regulator	LM20144	Texas Instruments	1
C_{IN}	47 μF , 1206, X5R, 6.3V	C3216JB0J476M	TDK	1
C_{OUT}	100 μF , 1210, X5R, 6.3V	C3225X5R0J107M	TDK	1
L	1.5 μH , 9.7 m Ω	SPM6530T-1R5M100	TDK	1
R_F	1 Ω , 0603	CRCW06031R0J-e3	Vishay-Dale	1
C_F	1 μF , 0603, X7R, 10V	GRM188R71A105KA01	Murata	1
C_{VCC}	1 μF , 0603, X7R, 10V	GRM188R71A105KA01	Murata	1
R_{C1}	9.09k Ω , 0603	CRCW06039091F	Vishay-Dale	1
C_{C1}	2.2nF, 0603, X7R, 25V	VJ0603Y222KXA	Vishay-Vitramon	1
C_{SS}	33nF, 0603, X7R, 25V	VJ0603Y333KXXA	Vishay-Vitramon	1
R_{FB1}	30.9k Ω , 0603	CRCW06033092F	Vishay-Dale	1
R_{FB2}	10k Ω , 0603	CRCW06031002F-e3	Vishay-Dale	1
R_T	196k Ω , 0603	CRCW06031963F-e3	Vishay-Dale	1


Figure 2. Efficiency vs I_{OUT}

Figure 3. Output Voltage Ripple

Figure 4. Transient Response

3 Optimizing a Solution for Size

For the smallest possible solution size the fixed frequency LM20124 device was selected since the 1MHz free running oscillator minimizes both the component count and inductor size. To minimize the solution size careful attention needs to be paid to the selection of the external components such as the inductor, input, and output capacitors.

3.1 Inductor Selection

The inductor should be sized for approximately 30% ripple current. For $V_{IN} = 5V$, $V_{OUT} = 1.2V$, $f_{SW} = 1MHz$, and $I_{OUT} = 4A$, the ideal inductance value can be calculated from equation 1 to be $0.76 \mu H$. Once an inductance value is calculated, an actual inductor needs to be selected based on a trade-off between physical size, efficiency, and current carrying capability. Since the purpose of this design is minimize the size, it is possible to select inductor values smaller than $0.76 \mu H$, as long as the output current plus one-

half the peak to peak ripple current does not exceed the device current limit. After examining several inductor vendors, a Vishay IHLP1616BZER1R0M11 inductor was selected. This 1 μ H inductor results in a peak-to-peak ripple current of 1.66A and 909 mA when the converter is operating from 5V and 3.3V respectively. For a design where size is critical, the Vishay IHLP1616BZER1R0M11 inductor offers a small size in addition to low DC losses (24 m Ω DCR), and saturation current rating (5A I_{SAT} rating).

3.2 Output Capacitor Selection

A TDK 47 μ F ceramic capacitor is selected for the output capacitor to provide good transient and DC performance in a relatively small package. From the technical specifications of this capacitor, the ESR at the 1.5 MHz switching frequency is roughly 3 m Ω , and the effective in-circuit capacitance is approximately 28 μ F (reduced from 47 μ F due to the 1.2V DC bias). With these values, the peak-to-peak voltage ripple on the output when operating from a 5V input can be calculated to be 10 mV.

3.3 Compensation Selection

The compensation network was selected using the excel design tool (available online) to give a crossover frequency of 65 kHz. For this target crossover frequency, operating conditions, and filter components the excel design tool suggested a value of C_{C1} of 1.8 nF and a value of R_{C1} of 3.92 k Ω .

The final schematic for a 5V or 3.3V to 1.2V conversion is shown in [Figure 1](#).

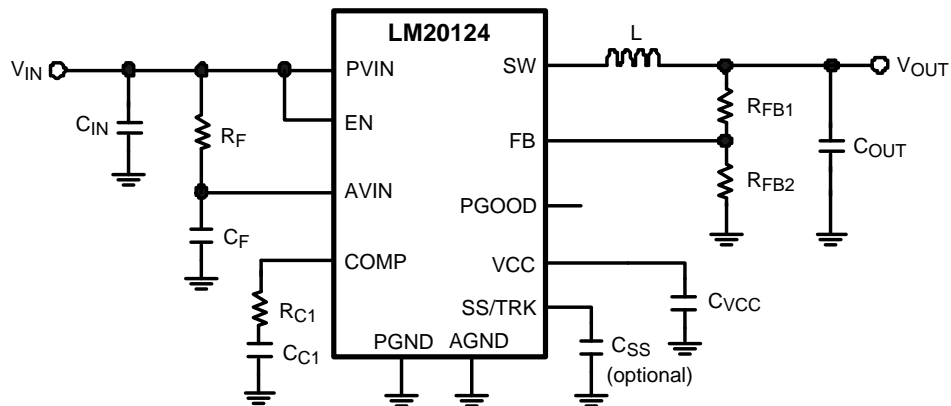


Figure 5. 1.2V Output Solution Optimized for Size

Table 2. Bill of Materials (Small solution size, $V_{IN} = 5V$, $V_{OUT} = 1.2V$, $I_{OUT(MAX)} = 4A$)

Designator	Description	Part Number	Manufacturer	Qty
U1	Synchronous Buck Regulator	LM20124	Texas Instruments	1
C_{IN}	47 μ F, 1206, X5R, 6.3V	C3216JB0J476M	TDK	1
C_{OUT}	47 μ F, 1206, X5R, 6.3V	C3216JB0J476M	TDK	1
L	1 μ H, 24m Ω	IHLP1616BZER1R0M11	Vishay	1
R_F	1 Ω , 0402	CRCW04021R0J-e3	Vishay-Dale	1
C_F	1 μ F, 0402, X7R, 10V	GRM155R61A105KE15	Murata	1
C_{VCC}	1 μ F, 0402, X7R, 10V	GRM155R61A105KE15	Murata	1
R_{C1}	3.92k Ω , 0402	CRCW04023922F-e3	Vishay-Dale	1
C_{C1}	1.8nF, 0402, X7R, 25V	VJ0402Y182KXXA	Vishay	1
C_{SS}	33nF, 0402, X7R, 25V	VJ0402G333KXJA	Vishay-Vitramon	1
R_{FB1}	4.99k Ω , 0402	CRCW04024992F-e3	Vishay-Dale	1
R_{FB2}	10k Ω , 0402	CRCW04021002F-e3	Vishay-Dale	1

The calculated component PCB area for this design is 65 mm². The efficiency vs. I_{OUT} , output voltage ripple, and transient response are shown below for this solution.

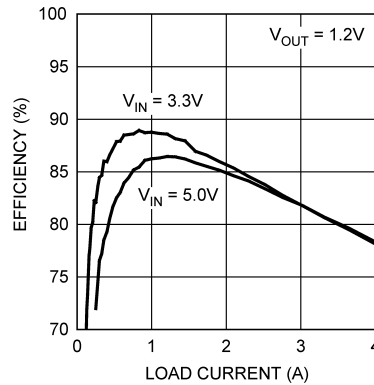


Figure 6. Efficiency vs I_{OUT}

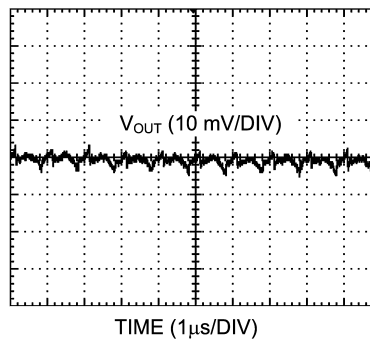


Figure 7. Output Voltage Ripple

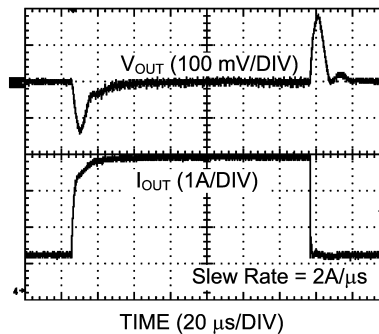


Figure 8. Transient Response

4 Solution Optimized for Transient Response

To optimize the transient response the switching frequency should be as high as possible. A high switching frequency allows the crossover frequency to be maximized and the inductor size to be minimized. A small inductor also permits the inductor current to quickly ramp during a load step change.

4.1 Inductor Selection

The inductor should be sized for approximately 30% ripple current. For $V_{IN} = 5V$, $V_{OUT} = 1.2V$, $f_{SW} = 1.5$ MHz, and $I_{OUT} = 4A$, the ideal inductance value can be calculated from equation 1 to be $0.51 \mu H$. Once an inductance value is calculated, an actual inductor needs to be selected based on a trade-off between physical size, efficiency, and current carrying capability. Since the purpose of this design is minimize the size, it is possible to select inductor values smaller than $0.51 \mu H$, as long as the output current plus one-half the peak to peak ripple current does not exceed the device current limit. After examining several inductor vendors, a TDK SPM6530T-R47M170 inductor was selected. This $0.47 \mu H$ inductor results in a peak-to-peak ripple current of 1.3A and 1.08A when the converter is operating from 5V and 3.3V respectively. For a design where size is critical, the TDK SPM6530T-R47M170 inductor offers small size with relatively low DC losses ($3.3 m\Omega$ DCR), and saturation current rating ($17A I_{SAT}$ rating).

4.2 Output Capacitor Selection

A Sanyo $470 \mu F$ POSCAP capacitor with $10 m\Omega$ of series resistance (ESR) is selected for the output capacitor to provide good transient and DC performance in a relatively small package. If desired the output voltage ripple can be further reduced by placing a $47 \mu F$ ceramic capacitor in parallel with the Sanyo POSCAP.

4.3 Compensation Selection

The compensation network was selected using the excel design tool (available online) to give a crossover frequency of 105 kHz. For this target crossover frequency, operating conditions, and filter components a value for C_{C1} of $0.47 nF$ and a value for R_{C1} of $40 k\Omega$ were selected. Since the output capacitor value and ESR are large an additional capacitor C_{C2} is recommended. For this design C_{C2} is $100 pF$.

The final schematic for a 5V to 1.2V or 3.3V to 1.2V conversion is shown in [Figure 1](#).

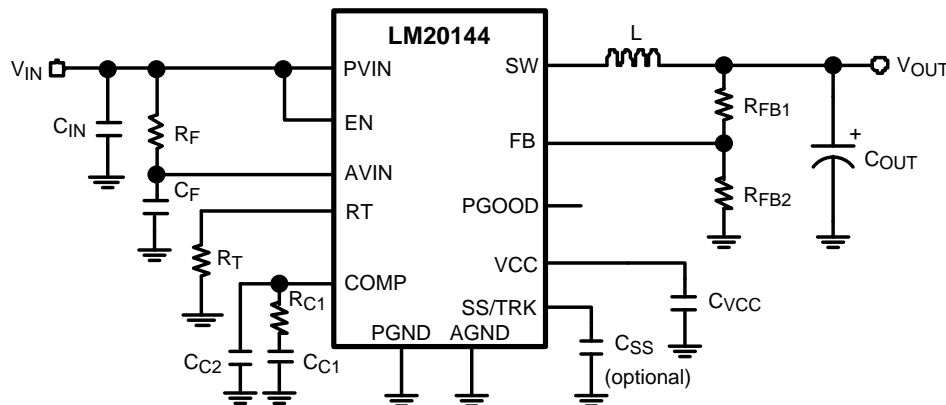


Figure 9. 1.2V Output Solution Optimized for Load Transients

Table 3. Transient Response Bill of Materials ($V_{IN} = 5V$, $V_{OUT} = 3.3V$, $I_{OUT(MAX)} = 4A$, $f_{SW} = 1.5$ MHz)

Designator	Description	Part Number	Manufacturer	Qty
U1	Synchronous Buck Regulator	LM20144	Texas Instruments	1
C_{IN}	$47 \mu F$, 1206, X5R, 6.3V	C3216JB0J476M	TDK	1
C_{OUT}	$470 \mu F$, D4D, POSCAP, 6.3V	6TPD470M	Sanyo	1
L	$0.47 \mu H$, $3.3 m\Omega$	SPM6530T-R47M170	TDK	1
R_F	1Ω , 0603	CRCW06031R0J-e3	Vishay-Dale	1
C_F	$1 \mu F$, 0603, X7R, 10V	GRM188R71A105KA01	Murata	1
C_{VCC}	$1 \mu F$, 0603, X7R, 10V	GRM188R71A105KA01	Murata	1
R_{C1}	$40.0 k\Omega$, 0603	CRCW06034002F-e3	Vishay-Dale	1
C_{C1}	$0.47 nF$, 0603, X7R, 25V	GRM188R71H471KA01	Murata	1
C_{C2}	$100 pF$, 0603, 50V, COG	GRM1885C1H101JA01	Murata	1

Table 3. Transient Response Bill of Materials ($V_{IN} = 5V$, $V_{OUT} = 3.3V$, $I_{OUT(MAX)} = 4A$, $f_{SW} = 1.5$ MHz) (continued)

Designator	Description	Part Number	Manufacturer	Qty
C _{SS}	33nF,0603,X7R,25V	VJ0603Y333KXXA	Vishay-Vitramon	1
R _{FB1}	4.99kΩ,0603	CRCW06034992F-e3	Vishay-Dale	1
R _{FB2}	10kΩ, 0603	CRCW06031002F-e3	Vishay-Dale	1
R _T	48.7kΩ, 0603	CRCW06034872F-e3	Vishay-Dale	1

The calculated component PCB area for this design is 129 mm². The efficiency vs. I_{OUT}, output voltage ripple, and transient response are shown below for this solution.

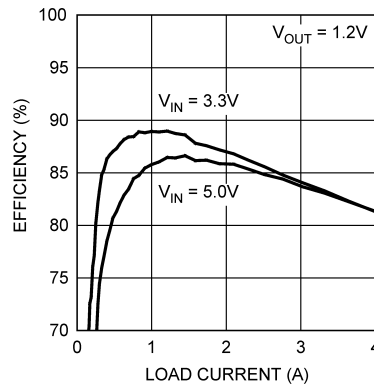


Figure 10. Efficiency vs I_{OUT}

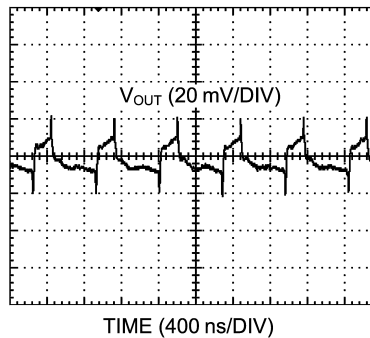


Figure 11. Output Voltage Ripple

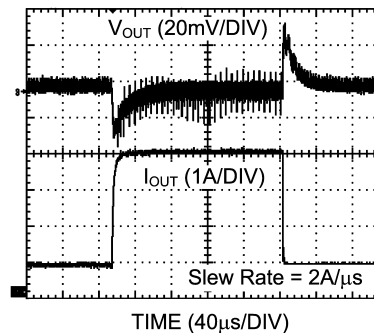


Figure 12. Transient Response

IMPORTANT NOTICE

Texas Instruments Incorporated and its subsidiaries (TI) reserve the right to make corrections, enhancements, improvements and other changes to its semiconductor products and services per JESD46, latest issue, and to discontinue any product or service per JESD48, latest issue. Buyers should obtain the latest relevant information before placing orders and should verify that such information is current and complete. All semiconductor products (also referred to herein as "components") are sold subject to TI's terms and conditions of sale supplied at the time of order acknowledgment.

TI warrants performance of its components to the specifications applicable at the time of sale, in accordance with the warranty in TI's terms and conditions of sale of semiconductor products. Testing and other quality control techniques are used to the extent TI deems necessary to support this warranty. Except where mandated by applicable law, testing of all parameters of each component is not necessarily performed.

TI assumes no liability for applications assistance or the design of Buyers' products. Buyers are responsible for their products and applications using TI components. To minimize the risks associated with Buyers' products and applications, Buyers should provide adequate design and operating safeguards.

TI does not warrant or represent that any license, either express or implied, is granted under any patent right, copyright, mask work right, or other intellectual property right relating to any combination, machine, or process in which TI components or services are used. Information published by TI regarding third-party products or services does not constitute a license to use such products or services or a warranty or endorsement thereof. Use of such information may require a license from a third party under the patents or other intellectual property of the third party, or a license from TI under the patents or other intellectual property of TI.

Reproduction of significant portions of TI information in TI data books or data sheets is permissible only if reproduction is without alteration and is accompanied by all associated warranties, conditions, limitations, and notices. TI is not responsible or liable for such altered documentation. Information of third parties may be subject to additional restrictions.

Resale of TI components or services with statements different from or beyond the parameters stated by TI for that component or service voids all express and any implied warranties for the associated TI component or service and is an unfair and deceptive business practice. TI is not responsible or liable for any such statements.

Buyer acknowledges and agrees that it is solely responsible for compliance with all legal, regulatory and safety-related requirements concerning its products, and any use of TI components in its applications, notwithstanding any applications-related information or support that may be provided by TI. Buyer represents and agrees that it has all the necessary expertise to create and implement safeguards which anticipate dangerous consequences of failures, monitor failures and their consequences, lessen the likelihood of failures that might cause harm and take appropriate remedial actions. Buyer will fully indemnify TI and its representatives against any damages arising out of the use of any TI components in safety-critical applications.

In some cases, TI components may be promoted specifically to facilitate safety-related applications. With such components, TI's goal is to help enable customers to design and create their own end-product solutions that meet applicable functional safety standards and requirements. Nonetheless, such components are subject to these terms.

No TI components are authorized for use in FDA Class III (or similar life-critical medical equipment) unless authorized officers of the parties have executed a special agreement specifically governing such use.

Only those TI components which TI has specifically designated as military grade or "enhanced plastic" are designed and intended for use in military/aerospace applications or environments. Buyer acknowledges and agrees that any military or aerospace use of TI components which have **not** been so designated is solely at the Buyer's risk, and that Buyer is solely responsible for compliance with all legal and regulatory requirements in connection with such use.

TI has specifically designated certain components as meeting ISO/TS16949 requirements, mainly for automotive use. In any case of use of non-designated products, TI will not be responsible for any failure to meet ISO/TS16949.

Products

Audio	www.ti.com/audio
Amplifiers	amplifier.ti.com
Data Converters	dataconverter.ti.com
DLP® Products	www.dlp.com
DSP	dsp.ti.com
Clocks and Timers	www.ti.com/clocks
Interface	interface.ti.com
Logic	logic.ti.com
Power Mgmt	power.ti.com
Microcontrollers	microcontroller.ti.com
RFID	www.ti-rfid.com
OMAP Applications Processors	www.ti.com/omap
Wireless Connectivity	www.ti.com/wirelessconnectivity

Applications

Automotive and Transportation	www.ti.com/automotive
Communications and Telecom	www.ti.com/communications
Computers and Peripherals	www.ti.com/computers
Consumer Electronics	www.ti.com/consumer-apps
Energy and Lighting	www.ti.com/energy
Industrial	www.ti.com/industrial
Medical	www.ti.com/medical
Security	www.ti.com/security
Space, Avionics and Defense	www.ti.com/space-avionics-defense
Video and Imaging	www.ti.com/video

TI E2E Community

e2e.ti.com